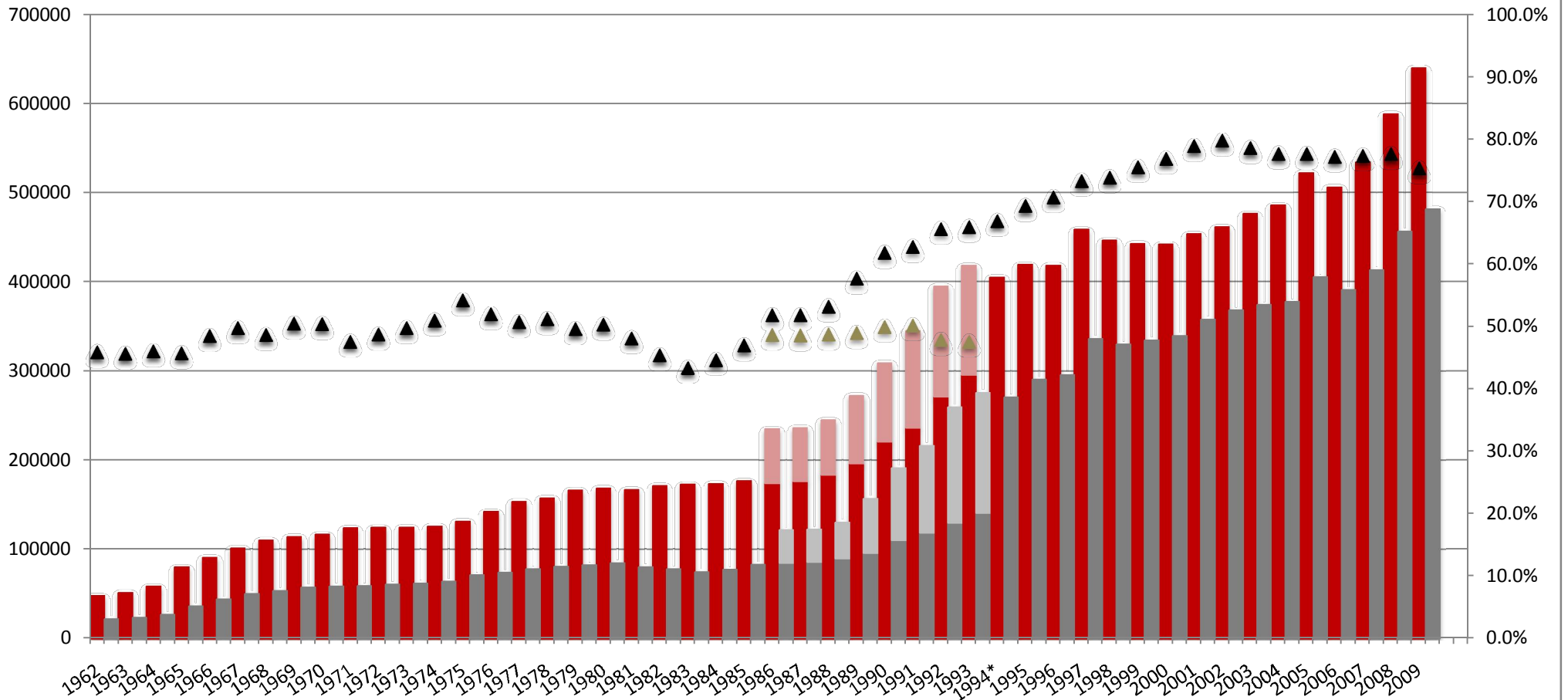


## Full-time undergraduates (all domiciles) 1962-2009 applicants and accepts through UCCA, PCAS and UCAS



\*UCCA and PCAS merged in 1994 to form UCAS

■ Applicants   
 ■ PCAS Applicants   
 ■ Accepts   
 ■ PCAS Accepts   
 ▲ Acceptance rate excl. PCAS   
 ▲ Acceptance rate