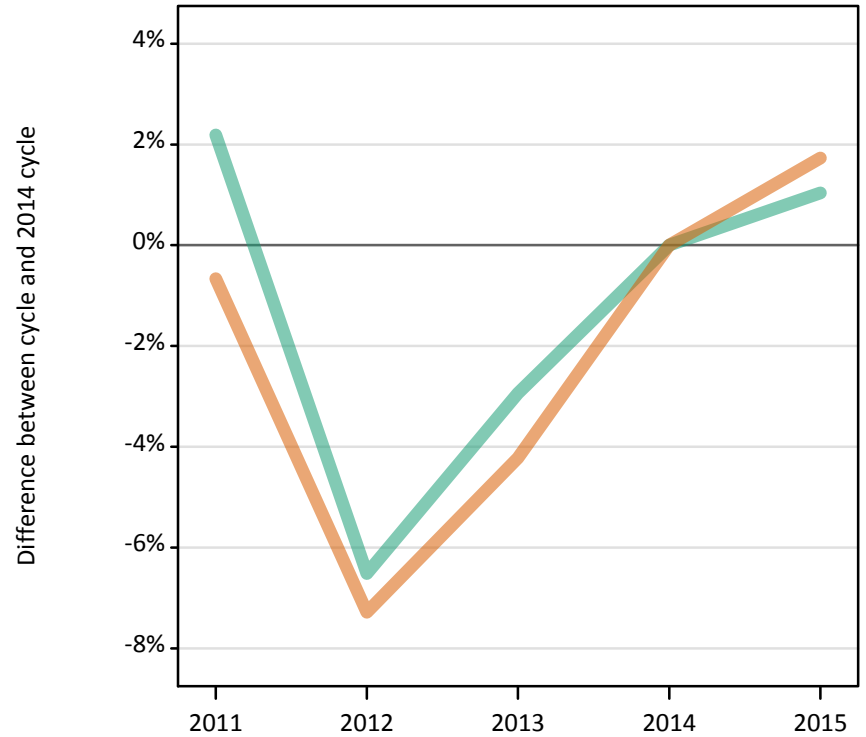


Applicants by sex and age at the 15 January deadline (No Scot. X1)

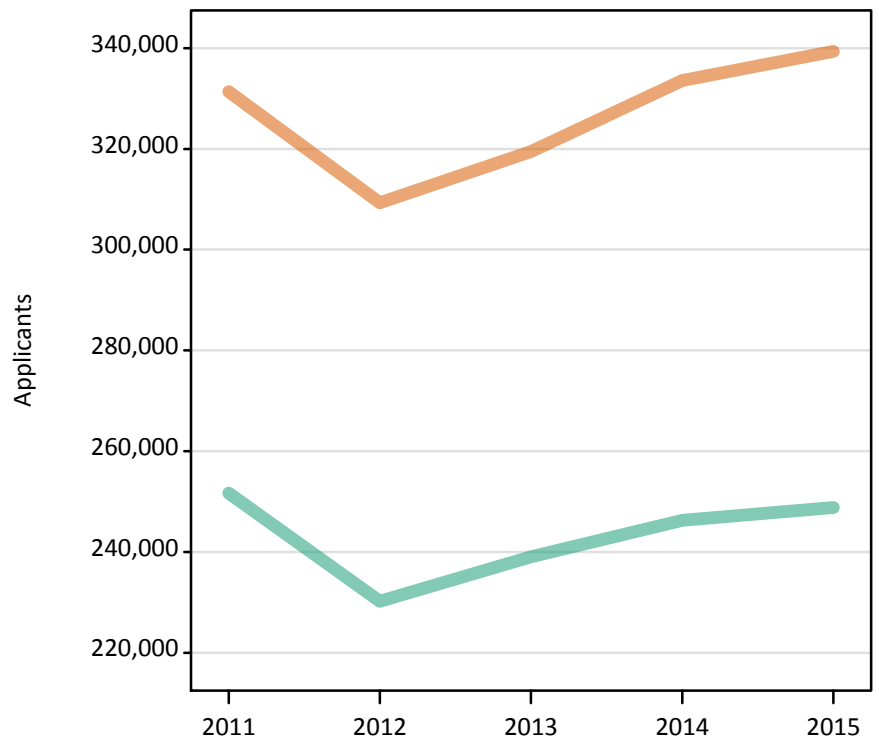
DX.2.1 Applicants by sex : All domiciles Difference between cycle and 2014 cycle

Men
Women



DX.2.2 Applicants by sex : All domiciles

Men
Women



DX.2.3 Applicants by age and sex : All domiciles

Age group and sex of applicant		2011	2012	2013	2014	2015
Under 18	Women	4,460	4,490	4,760	5,470	5,610
	Men	3,100	3,300	3,630	3,970	4,240
18	Women	160,540	157,280	159,960	165,260	174,390
	Men	127,440	122,670	125,190	129,300	133,010
19	Women	65,830	56,550	62,430	65,010	65,890
	Men	55,490	46,990	52,080	52,990	53,960
20-24	Women	58,210	52,830	54,740	57,970	55,450
	Men	46,070	40,230	41,470	42,730	41,140
25-29	Women	17,320	15,540	15,960	16,780	16,260
	Men	9,210	7,840	8,110	8,230	7,850
30-34	Women	9,850	9,080	8,950	9,310	8,840
	Men	4,470	3,870	3,670	3,750	3,490
35 and over	Women	15,160	13,500	12,710	13,790	12,930
	Men	5,890	5,330	4,900	5,310	5,160
All ages	Women	331,370	309,280	319,500	333,580	339,360
	Men	251,670	230,230	239,040	246,280	248,830

DX.2.4 Applicants by age and sex : All domiciles

Difference between cycle and 2014 cycle

Age group and sex of applicant		2011	2012	2013	2014	2015
Under 18	Women	-18%	-18%	-13%	0%	3%
	Men	-22%	-17%	-8%	0%	7%
18	Women	-3%	-5%	-3%	0%	6%
	Men	-1%	-5%	-3%	0%	3%
19	Women	1%	-13%	-4%	0%	1%
	Men	5%	-11%	-2%	0%	2%
20-24	Women	0%	-9%	-6%	0%	-4%
	Men	8%	-6%	-3%	0%	-4%
25-29	Women	3%	-7%	-5%	0%	-3%
	Men	12%	-5%	-1%	0%	-5%
30-34	Women	6%	-2%	-4%	0%	-5%
	Men	19%	3%	-2%	0%	-7%
35 and over	Women	10%	-2%	-8%	0%	-6%
	Men	11%	0%	-8%	0%	-3%
All ages	Women	-1%	-7%	-4%	0%	2%
	Men	2%	-7%	-3%	0%	1%

DX.2.5 Applicants by sex : UK

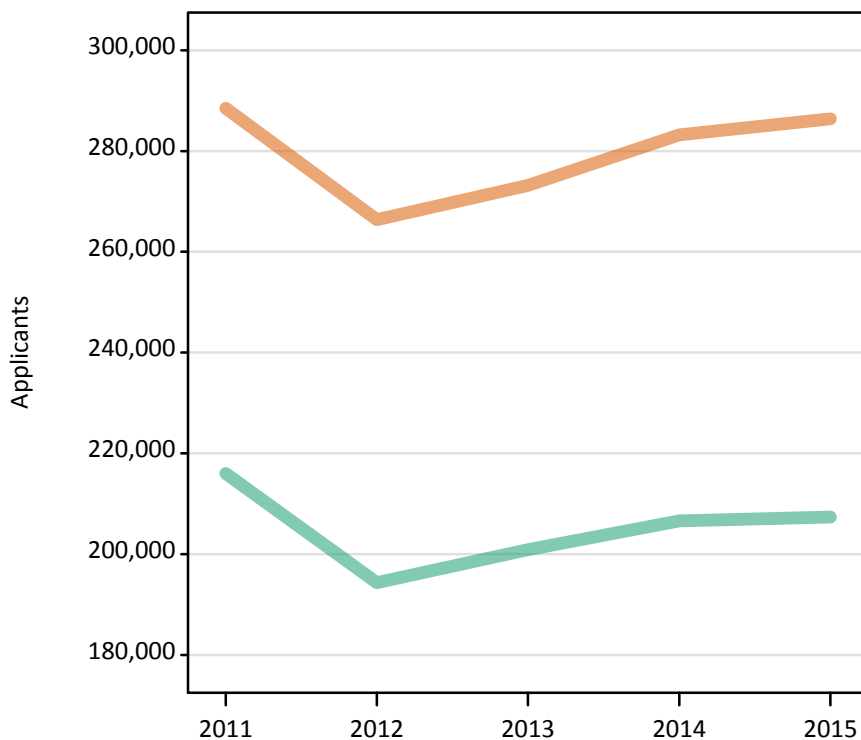
Difference between cycle and 2014 cycle

Men
Women



DX.2.6 Applicants by sex : UK

Men
Women



DX.2.7 Applicants by age and sex : UK

Age group and sex of applicant		2011	2012	2013	2014	2015
Under 18	Women	1,220	990	870	910	950
	Men	820	700	650	640	700
18	Women	145,690	141,750	142,590	146,330	153,670
	Men	116,300	110,590	111,970	115,030	117,370
19	Women	53,440	44,140	49,200	50,680	50,980
	Men	45,200	36,990	41,570	42,270	42,700
20-24	Women	47,800	43,050	44,530	47,100	44,560
	Men	36,130	30,770	31,740	32,950	31,680
25-29	Women	15,980	14,440	14,820	15,640	15,030
	Men	7,860	6,700	6,980	7,200	6,820
30-34	Women	9,490	8,750	8,650	9,010	8,540
	Men	4,070	3,520	3,330	3,430	3,180
35 and over	Women	14,910	13,250	12,500	13,530	12,660
	Men	5,630	5,070	4,650	5,080	4,950
All ages	Women	288,520	266,370	273,160	283,190	286,390
	Men	216,020	194,330	200,890	206,600	207,390

DX.2.8 Applicants by age and sex : UK

Difference between cycle and 2014 cycle

Age group and sex of applicant		2011	2012	2013	2014	2015
Under 18	Women	33%	8%	-5%	0%	4%
	Men	27%	8%	1%	0%	8%
18	Women	-0%	-3%	-3%	0%	5%
	Men	1%	-4%	-3%	0%	2%
19	Women	5%	-13%	-3%	0%	1%
	Men	7%	-13%	-2%	0%	1%
20-24	Women	1%	-9%	-5%	0%	-5%
	Men	10%	-7%	-4%	0%	-4%
25-29	Women	2%	-8%	-5%	0%	-4%
	Men	9%	-7%	-3%	0%	-5%
30-34	Women	5%	-3%	-4%	0%	-5%
	Men	19%	2%	-3%	0%	-7%
35 and over	Women	10%	-2%	-8%	0%	-6%
	Men	11%	-0%	-8%	0%	-3%
All ages	Women	2%	-6%	-4%	0%	1%
	Men	5%	-6%	-3%	0%	0%

DX.2.9 Applicants by sex : England

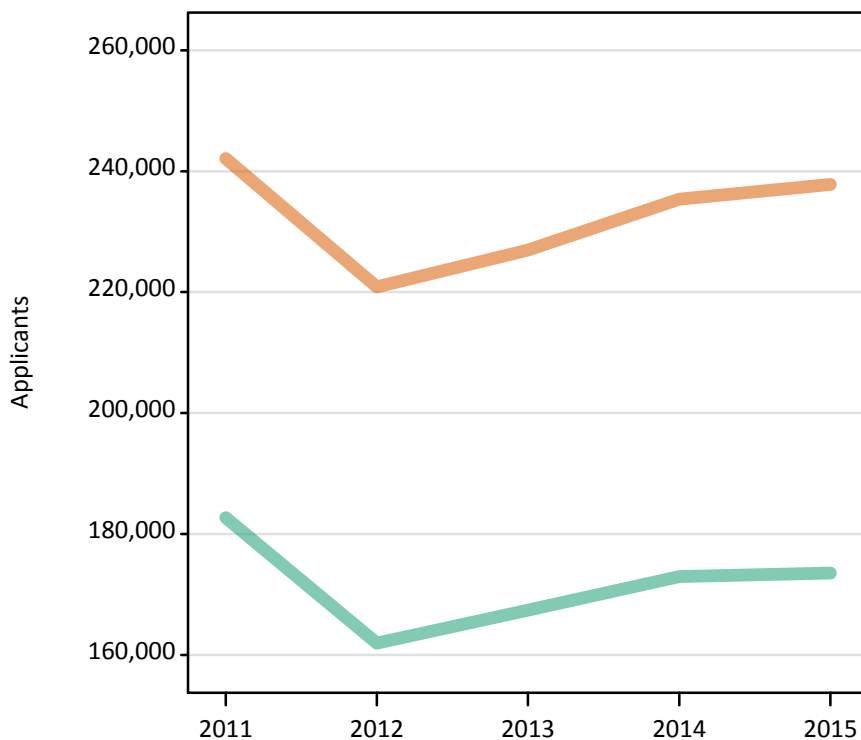
Difference between cycle and 2014 cycle

Men
Women



DX.2.10 Applicants by sex : England

Men
Women



DX.2.11 Applicants by age and sex : England

Age group and sex of applicant		2011	2012	2013	2014	2015
Under 18	Women	640	480	440	490	470
	Men	440	370	360	380	430
18	Women	121,800	117,840	119,000	122,250	128,660
	Men	98,030	92,950	94,190	97,170	99,400
19	Women	46,690	37,610	42,490	43,830	44,110
	Men	40,050	32,000	36,470	37,070	37,360
20-24	Women	39,050	34,500	35,310	37,440	35,120
	Men	29,860	24,380	24,610	25,920	24,690
25-29	Women	13,150	11,770	11,960	12,490	11,940
	Men	6,150	5,190	5,340	5,510	5,150
30-34	Women	8,000	7,370	7,170	7,420	6,870
	Men	3,350	2,790	2,600	2,700	2,460
35 and over	Women	12,790	11,330	10,580	11,440	10,610
	Men	4,800	4,270	3,830	4,210	4,060
All ages	Women	242,120	220,890	226,950	235,350	237,790
	Men	182,680	161,950	167,380	172,950	173,560

DX.2.12 Applicants by age and sex : England

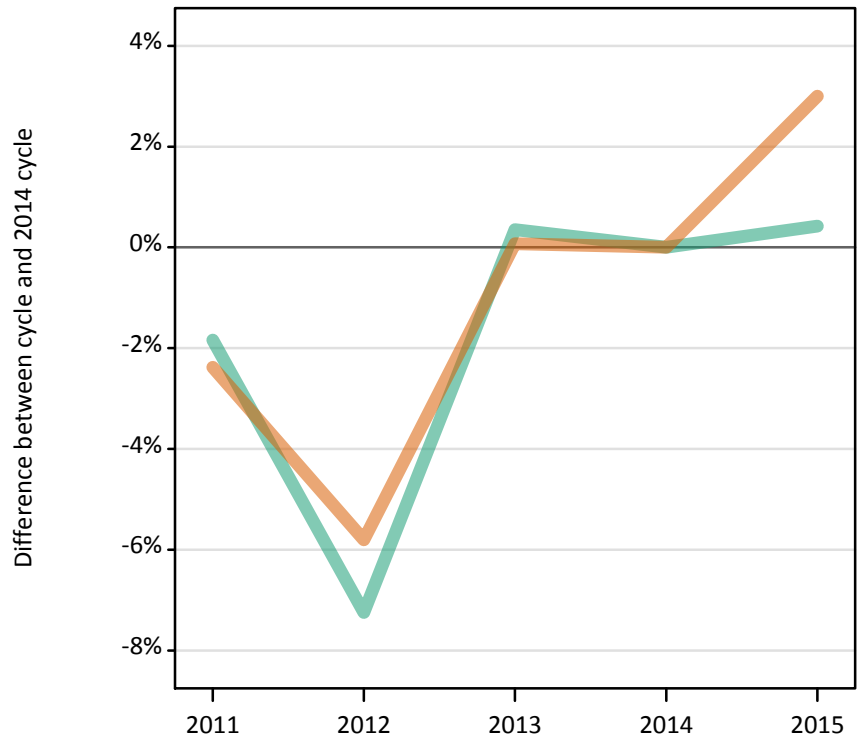
Difference between cycle and 2014 cycle

Age group and sex of applicant		2011	2012	2013	2014	2015
Under 18	Women	33%	-2%	-9%	0%	-3%
	Men	16%	-2%	-5%	0%	14%
18	Women	-0%	-4%	-3%	0%	5%
	Men	1%	-4%	-3%	0%	2%
19	Women	7%	-14%	-3%	0%	1%
	Men	8%	-14%	-2%	0%	1%
20-24	Women	4%	-8%	-6%	0%	-6%
	Men	15%	-6%	-5%	0%	-5%
25-29	Women	5%	-6%	-4%	0%	-4%
	Men	12%	-6%	-3%	0%	-6%
30-34	Women	8%	-1%	-3%	0%	-7%
	Men	24%	3%	-4%	0%	-9%
35 and over	Women	12%	-1%	-8%	0%	-7%
	Men	14%	1%	-9%	0%	-4%
All ages	Women	3%	-6%	-4%	0%	1%
	Men	6%	-6%	-3%	0%	0%

DX.2.13 Applicants by sex : Northern Ireland

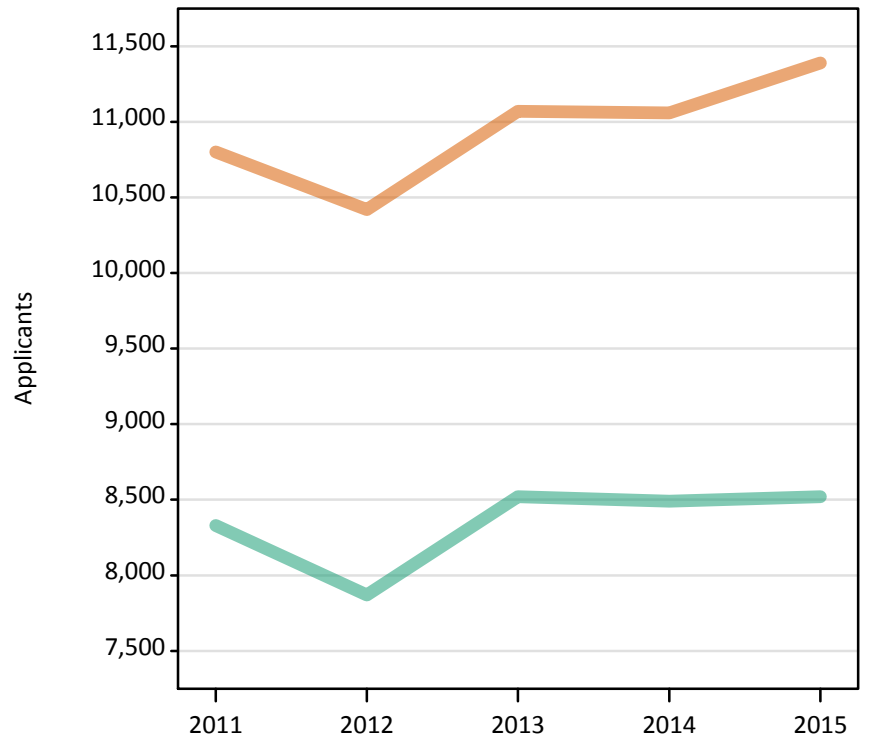
Difference between cycle and 2014 cycle

Men
Women



DX.2.14 Applicants by sex : Northern Ireland

Men
Women



DX.2.15 Applicants by age and sex : Northern Ireland

Age group and sex of applicant		2011	2012	2013	2014	2015
Under 18	Women	30	30	20	20	20
	Men	20	20	20	10	10
18	Women	6,710	6,680	6,520	6,380	6,820
	Men	5,180	4,970	5,150	5,070	5,110
19	Women	1,610	1,420	1,610	1,620	1,610
	Men	1,290	1,130	1,260	1,340	1,390
20-24	Women	1,610	1,550	1,860	1,950	1,870
	Men	1,360	1,340	1,620	1,620	1,520
25-29	Women	440	380	530	550	520
	Men	290	230	280	240	260
30-34	Women	170	160	250	250	260
	Men	90	90	100	100	120
35 and over	Women	240	190	290	290	290
	Men	100	100	110	110	110
All ages	Women	10,800	10,420	11,070	11,060	11,390
	Men	8,330	7,870	8,520	8,490	8,520

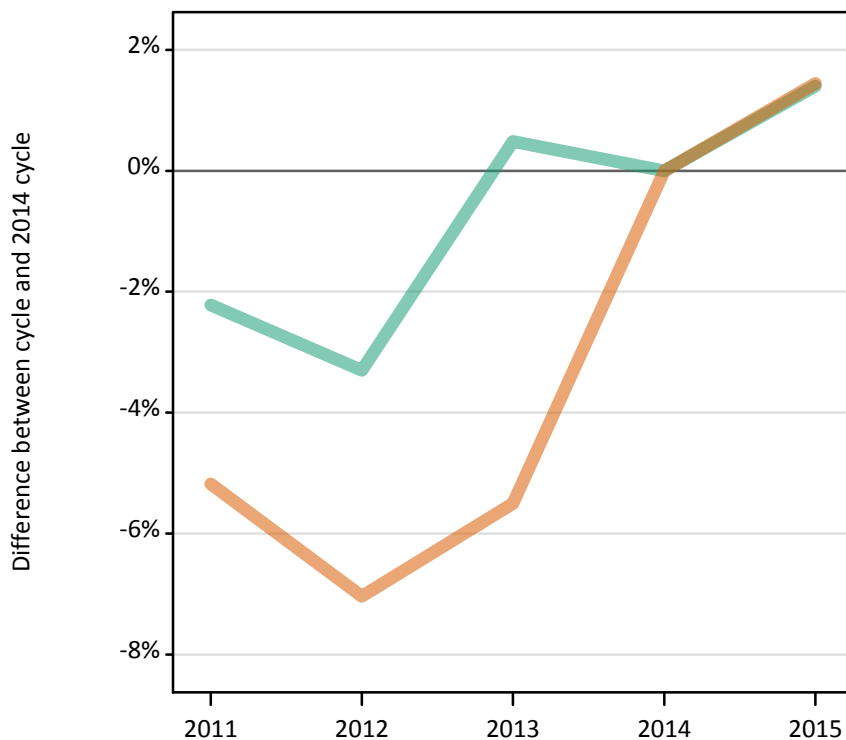
DX.2.16 Applicants by age and sex : Northern Ireland

Difference between cycle and 2014 cycle

Age group and sex of applicant		2011	2012	2013	2014	2015
Under 18	Women	47%	100%	6%	0%	35%
	Men	130%	60%	60%	0%	20%
18	Women	5%	5%	2%	0%	7%
	Men	2%	-2%	2%	0%	1%
19	Women	-0%	-12%	-1%	0%	-0%
	Men	-4%	-16%	-6%	0%	4%
20-24	Women	-17%	-20%	-5%	0%	-4%
	Men	-16%	-18%	-0%	0%	-6%
25-29	Women	-21%	-32%	-4%	0%	-6%
	Men	20%	-5%	14%	0%	5%
30-34	Women	-34%	-36%	-2%	0%	3%
	Men	-4%	-1%	1%	0%	29%
35 and over	Women	-18%	-34%	-1%	0%	-1%
	Men	-8%	-9%	-3%	0%	1%
All ages	Women	-2%	-6%	0%	0%	3%
	Men	-2%	-7%	0%	0%	0%

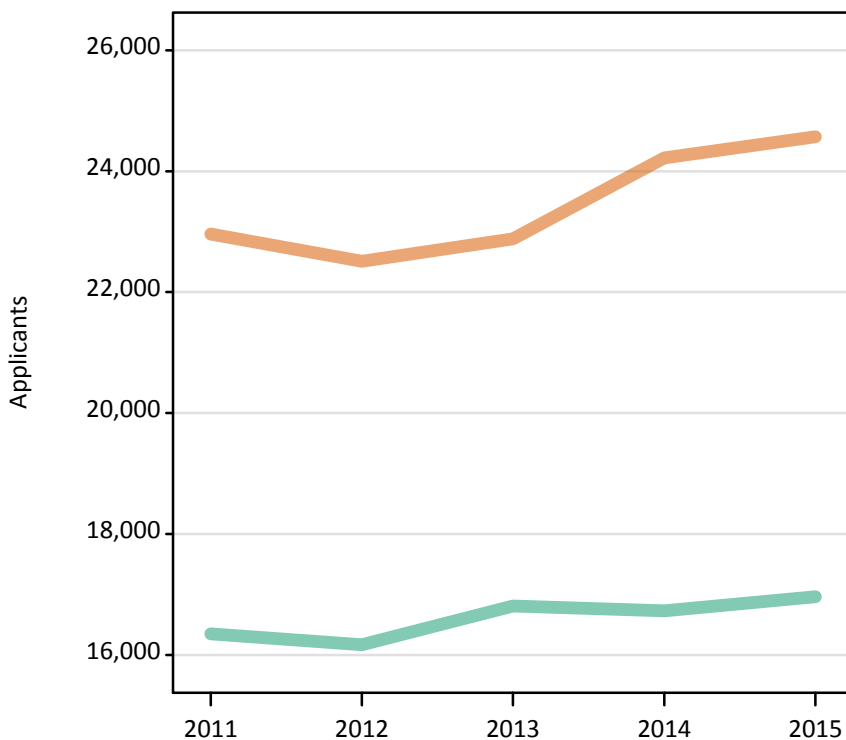
DX.2.17 Applicants by sex : Scotland
Difference between cycle and 2014 cycle

Men
Women



DX.2.18 Applicants by sex : Scotland

Men
Women



DX.2.19 Applicants by age and sex : Scotland

Age group and sex of applicant		2011	2012	2013	2014	2015
Under 18	Women	520	460	380	400	440
	Men	340	300	270	250	250
18	Women	10,690	10,720	10,750	11,230	11,350
	Men	8,210	7,970	8,040	7,980	8,040
19	Women	3,000	3,020	3,010	3,040	3,150
	Men	2,160	2,220	2,200	2,200	2,280
20-24	Women	5,020	4,900	5,310	5,630	5,580
	Men	3,550	3,670	4,190	4,080	4,170
25-29	Women	1,570	1,520	1,530	1,750	1,800
	Men	1,080	990	1,050	1,130	1,110
30-34	Women	890	770	810	900	1,000
	Men	490	480	510	510	490
35 and over	Women	1,260	1,120	1,090	1,270	1,250
	Men	530	550	550	580	620
All ages	Women	22,960	22,510	22,880	24,220	24,570
	Men	16,350	16,170	16,810	16,730	16,960

DX.2.20 Applicants by age and sex : Scotland

Difference between cycle and 2014 cycle

Age group and sex of applicant		2011	2012	2013	2014	2015
Under 18	Women	32%	17%	-4%	0%	11%
	Men	39%	21%	9%	0%	3%
18	Women	-5%	-5%	-4%	0%	1%
	Men	3%	-0%	1%	0%	1%
19	Women	-1%	-1%	-1%	0%	4%
	Men	-2%	1%	0%	0%	3%
20-24	Women	-11%	-13%	-6%	0%	-1%
	Men	-13%	-10%	3%	0%	2%
25-29	Women	-10%	-13%	-13%	0%	3%
	Men	-4%	-12%	-7%	0%	-2%
30-34	Women	-1%	-14%	-11%	0%	11%
	Men	-4%	-5%	0%	0%	-4%
35 and over	Women	-0%	-12%	-14%	0%	-1%
	Men	-9%	-6%	-6%	0%	6%
All ages	Women	-5%	-7%	-6%	0%	1%
	Men	-2%	-3%	0%	0%	1%

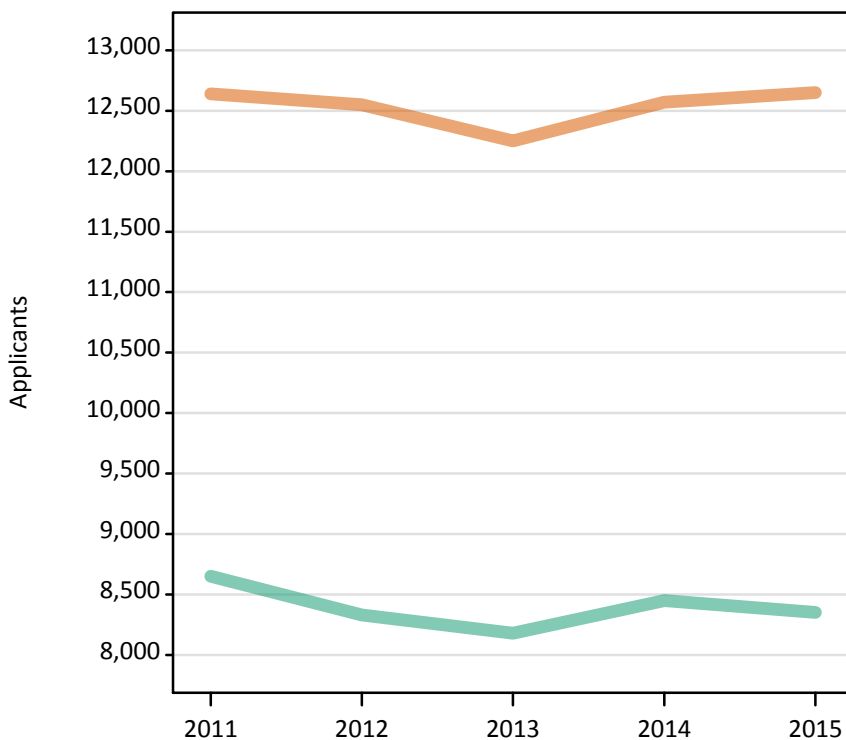
DX.2.21 Applicants by sex : Wales
Difference between cycle and 2014 cycle

Men
Women



DX.2.22 Applicants by sex : Wales

Men
Women



DX.2.23 Applicants by age and sex : Wales

Age group and sex of applicant		2011	2012	2013	2014	2015
Under 18	Women	30	10	20	20	20
	Men	20	20	10	10	0
18	Women	6,490	6,510	6,320	6,470	6,840
	Men	4,880	4,700	4,590	4,820	4,810
19	Women	2,150	2,100	2,100	2,180	2,110
	Men	1,700	1,650	1,640	1,670	1,680
20-24	Women	2,120	2,100	2,050	2,080	1,990
	Men	1,370	1,390	1,330	1,330	1,290
25-29	Women	820	770	810	850	780
	Men	340	280	310	320	310
30-34	Women	430	450	420	440	410
	Men	140	150	130	130	110
35 and over	Women	610	600	540	530	510
	Men	200	150	170	170	160
All ages	Women	12,640	12,550	12,250	12,570	12,650
	Men	8,650	8,330	8,180	8,450	8,350

DX.2.24 Applicants by age and sex : Wales

Difference between cycle and 2014 cycle

Age group and sex of applicant		2011	2012	2013	2014	2015
Under 18	Women	93%	-27%	60%	0%	20%
	Men	33%	25%	0%	0%	-83%
18	Women	0%	1%	-2%	0%	6%
	Men	1%	-2%	-5%	0%	-0%
19	Women	-2%	-4%	-4%	0%	-4%
	Men	2%	-1%	-1%	0%	1%
20-24	Women	2%	1%	-2%	0%	-4%
	Men	3%	4%	-0%	0%	-3%
25-29	Women	-3%	-9%	-4%	0%	-8%
	Men	5%	-11%	-2%	0%	-4%
30-34	Women	-3%	1%	-5%	0%	-8%
	Men	13%	18%	0%	0%	-16%
35 and over	Women	16%	14%	2%	0%	-4%
	Men	16%	-12%	-3%	0%	-10%
All ages	Women	1%	-0%	-2%	0%	1%
	Men	2%	-1%	-3%	0%	-1%

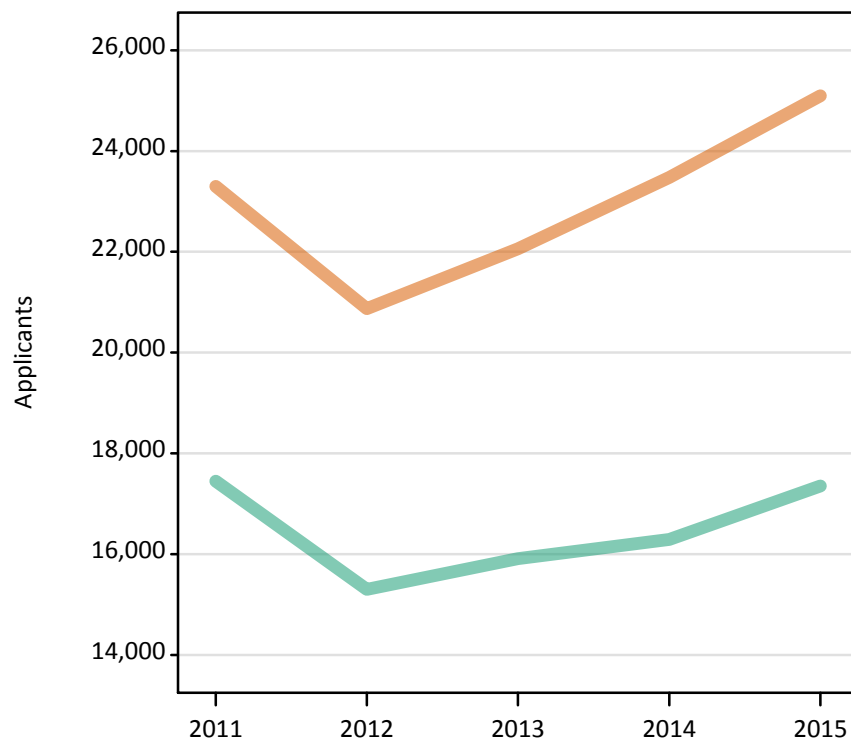
DX.2.25 Applicants by sex : EU (excluding UK)
Difference between cycle and 2014 cycle

Men
Women



DX.2.26 Applicants by sex : EU (excluding UK)

Men
Women



DX.2.27 Applicants by age and sex : EU (excluding UK)

Age group and sex of applicant		2011	2012	2013	2014	2015
Under 18	Women	1,780	1,740	1,800	2,040	2,270
	Men	1,060	1,000	1,140	1,190	1,430
18	Women	7,770	7,370	7,810	8,400	9,340
	Men	4,990	5,000	5,180	5,570	6,230
19	Women	6,950	6,290	6,720	7,180	7,590
	Men	5,470	4,690	4,950	4,870	5,240
20-24	Women	5,790	4,650	4,930	5,050	5,100
	Men	4,990	3,930	3,960	4,050	3,820
25-29	Women	730	550	590	570	560
	Men	640	450	440	410	450
30-34	Women	170	160	140	130	130
	Men	170	140	140	100	110
35 and over	Women	110	110	90	120	120
	Men	120	100	120	90	80
All ages	Women	23,300	20,870	22,060	23,480	25,100
	Men	17,450	15,300	15,910	16,290	17,350

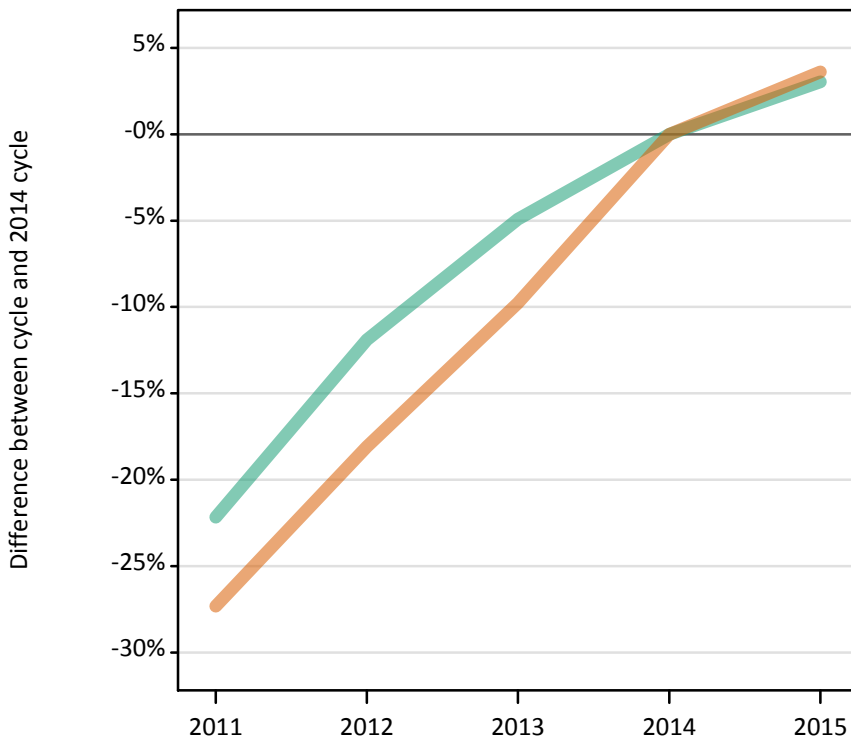
DX.2.28 Applicants by age and sex : EU (excluding UK)

Difference between cycle and 2014 cycle

Age group and sex of applicant		2011	2012	2013	2014	2015
Under 18	Women	-13%	-14%	-12%	0%	11%
	Men	-11%	-16%	-5%	0%	20%
18	Women	-8%	-12%	-7%	0%	11%
	Men	-10%	-10%	-7%	0%	12%
19	Women	-3%	-12%	-6%	0%	6%
	Men	12%	-4%	2%	0%	8%
20-24	Women	15%	-8%	-2%	0%	1%
	Men	23%	-3%	-2%	0%	-6%
25-29	Women	28%	-3%	3%	0%	-2%
	Men	57%	10%	7%	0%	9%
30-34	Women	37%	22%	6%	0%	4%
	Men	65%	34%	31%	0%	1%
35 and over	Women	-14%	-8%	-25%	0%	-7%
	Men	22%	11%	24%	0%	-18%
All ages	Women	-1%	-11%	-6%	0%	7%
	Men	7%	-6%	-2%	0%	7%

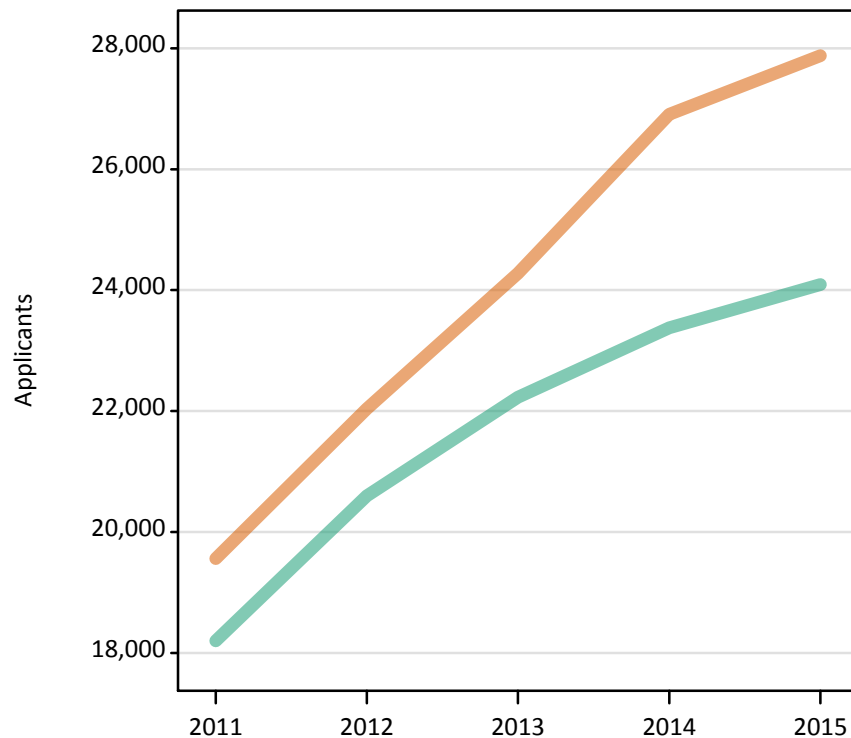
DX.2.29 Applicants by sex : Not EU
Difference between cycle and 2014 cycle

Men
Women



DX.2.30 Applicants by sex : Not EU

Men
Women



DX.2.31 Applicants by age and sex : Not EU

Age group and sex of applicant		2011	2012	2013	2014	2015
Under 18	Women	1,460	1,760	2,090	2,520	2,390
	Men	1,220	1,600	1,840	2,130	2,110
18	Women	7,090	8,160	9,560	10,530	11,380
	Men	6,150	7,090	8,040	8,690	9,420
19	Women	5,430	6,130	6,510	7,160	7,320
	Men	4,820	5,320	5,550	5,860	6,010
20-24	Women	4,620	5,130	5,280	5,830	5,790
	Men	4,940	5,530	5,780	5,730	5,640
25-29	Women	620	550	550	570	670
	Men	710	700	690	620	580
30-34	Women	190	180	170	170	170
	Men	230	210	200	210	200
35 and over	Women	150	130	120	130	150
	Men	150	160	130	140	130
All ages	Women	19,560	22,040	24,280	26,910	27,880
	Men	18,200	20,600	22,230	23,380	24,090

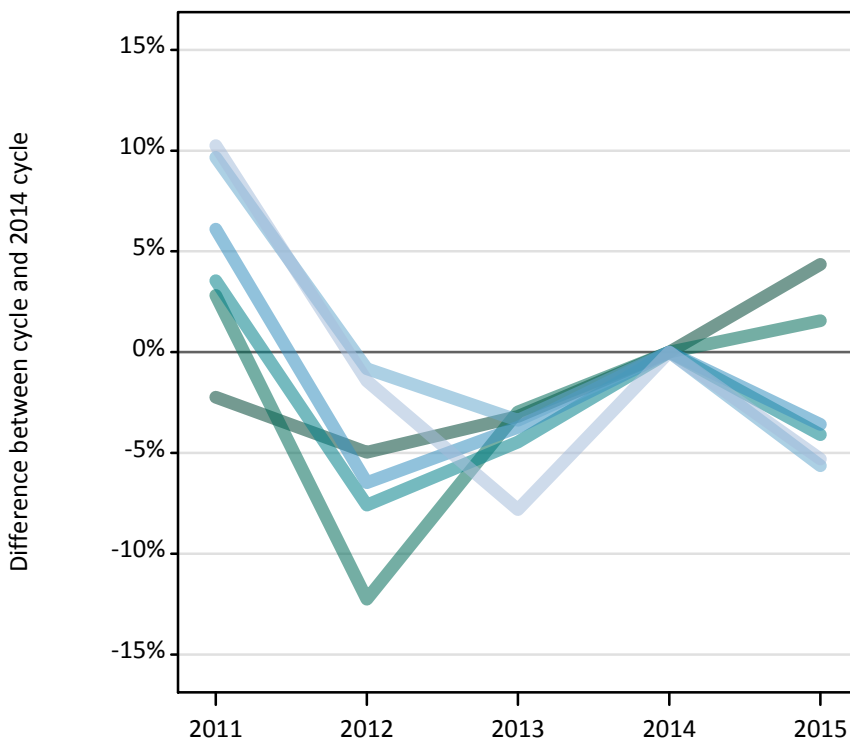
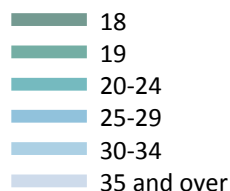
DX.2.32 Applicants by age and sex : Not EU

Difference between cycle and 2014 cycle

Age group and sex of applicant		2011	2012	2013	2014	2015
Under 18	Women	-42%	-30%	-17%	0%	-5%
	Men	-43%	-25%	-14%	0%	-1%
18	Women	-33%	-23%	-9%	0%	8%
	Men	-29%	-18%	-7%	0%	8%
19	Women	-24%	-14%	-9%	0%	2%
	Men	-18%	-9%	-5%	0%	3%
20-24	Women	-21%	-12%	-9%	0%	-1%
	Men	-14%	-3%	1%	0%	-2%
25-29	Women	8%	-4%	-4%	0%	17%
	Men	14%	12%	12%	0%	-6%
30-34	Women	14%	7%	-1%	0%	0%
	Men	6%	-1%	-6%	0%	-5%
35 and over	Women	12%	2%	-10%	0%	17%
	Men	3%	9%	-10%	0%	-7%
All ages	Women	-27%	-18%	-10%	0%	4%
	Men	-22%	-12%	-5%	0%	3%

DX.2.33 Applicants by domicile and age : All domiciles

Difference between cycle and 2014 cycle



DX.2.34 Applicants by domicile and age : All domiciles

Domicile and age group		2011	2012	2013	2014	2015
All domiciles	Under 18	7,560	7,790	8,390	9,430	9,850
	18	287,970	279,950	285,150	294,560	307,400
	19	121,320	103,540	114,500	118,000	119,850
	20-24	104,280	93,060	96,210	100,700	96,580
	25-29	26,530	23,380	24,070	25,000	24,110
	30-34	14,320	12,950	12,620	13,060	12,320
	35 and over	21,060	18,830	17,610	19,100	18,090

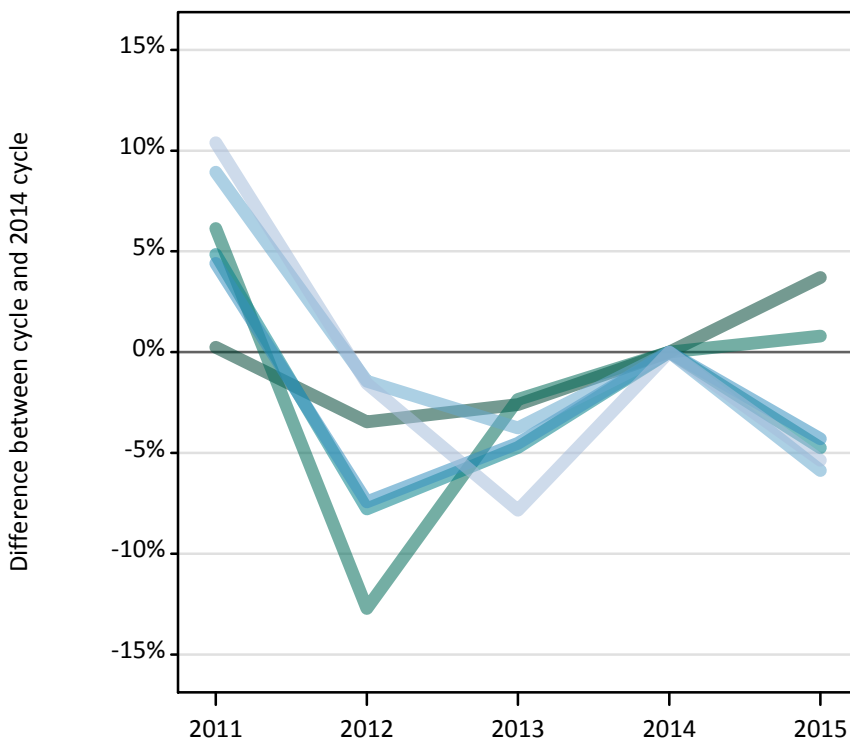
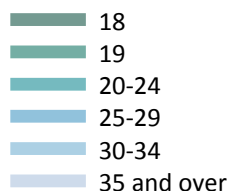
DX.2.35 Applicants by domicile and age : All domiciles

Difference between cycle and 2014 cycle

Domicile and age group		2011	2012	2013	2014	2015
All domiciles	Under 18	-20%	-17%	-11%	0%	4%
	18	-2%	-5%	-3%	0%	4%
	19	3%	-12%	-3%	0%	2%
	20-24	4%	-8%	-4%	0%	-4%
	25-29	6%	-6%	-4%	0%	-4%
	30-34	10%	-1%	-3%	0%	-6%
	35 and over	10%	-1%	-8%	0%	-5%

DX.2.36 Applicants by domicile and age : UK

Difference between cycle and 2014 cycle



DX.2.37 Applicants by domicile and age : UK

Domicile and age group		2011	2012	2013	2014	2015
UK	Under 18	2,040	1,680	1,520	1,560	1,650
	18	261,990	252,340	254,570	261,370	271,040
	19	98,650	81,130	90,770	92,950	93,690
	20-24	83,930	73,820	76,260	80,040	76,240
	25-29	23,840	21,140	21,800	22,830	21,850
	30-34	13,560	12,270	11,980	12,450	11,720
	35 and over	20,540	18,320	17,150	18,610	17,610

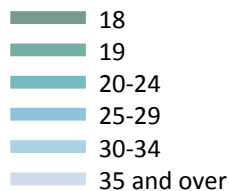
DX.2.38 Applicants by domicile and age : UK

Difference between cycle and 2014 cycle

Domicile and age group		2011	2012	2013	2014	2015
UK	Under 18	31%	8%	-3%	0%	6%
	18	0%	-3%	-3%	0%	4%
	19	6%	-13%	-2%	0%	1%
	20-24	5%	-8%	-5%	0%	-5%
	25-29	4%	-7%	-5%	0%	-4%
	30-34	9%	-1%	-4%	0%	-6%
	35 and over	10%	-2%	-8%	0%	-5%

DX.2.39 Applicants by domicile and age : England

Difference between cycle and 2014 cycle



DX.2.40 Applicants by domicile and age : England

Domicile and age group		2011	2012	2013	2014	2015
England	Under 18	1,080	850	800	860	900
	18	219,830	210,790	213,190	219,420	228,060
	19	86,740	69,600	78,950	80,900	81,480
	20-24	68,910	58,880	59,910	63,350	59,810
	25-29	19,300	16,960	17,300	17,990	17,090
	30-34	11,350	10,160	9,770	10,120	9,330
	35 and over	17,590	15,600	14,410	15,660	14,680

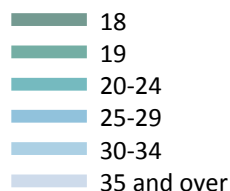
DX.2.41 Applicants by domicile and age : England

Difference between cycle and 2014 cycle

Domicile and age group		2011	2012	2013	2014	2015
England	Under 18	25%	-2%	-7%	0%	4%
	18	0%	-4%	-3%	0%	4%
	19	7%	-14%	-2%	0%	1%
	20-24	9%	-7%	-5%	0%	-6%
	25-29	7%	-6%	-4%	0%	-5%
	30-34	12%	0%	-3%	0%	-8%
	35 and over	12%	-0%	-8%	0%	-6%

DX.2.42 Applicants by domicile and age : Northern Ireland

Difference between cycle and 2014 cycle



DX.2.43 Applicants by domicile and age : Northern Ireland

Domicile and age group		2011	2012	2013	2014	2015
Northern Ireland	Under 18	50	50	30	30	40
	18	11,890	11,650	11,670	11,450	11,940
	19	2,900	2,550	2,870	2,950	3,000
	20-24	2,970	2,890	3,480	3,570	3,390
	25-29	730	610	800	800	780
	30-34	260	260	350	350	380
	35 and over	340	290	390	400	400

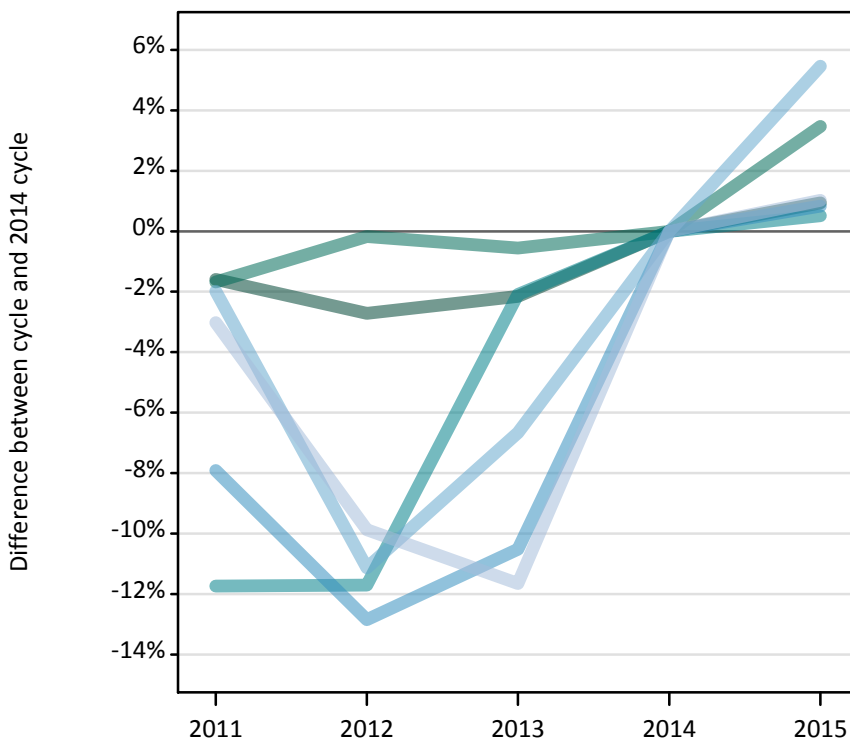
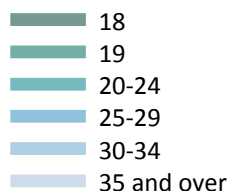
DX.2.44 Applicants by domicile and age : Northern Ireland

Difference between cycle and 2014 cycle

Domicile and age group		2011	2012	2013	2014	2015
Northern Ireland	Under 18	78%	85%	26%	0%	30%
	18	4%	2%	2%	0%	4%
	19	-2%	-14%	-3%	0%	2%
	20-24	-17%	-19%	-3%	0%	-5%
	25-29	-8%	-23%	1%	0%	-2%
	30-34	-26%	-26%	-1%	0%	10%
	35 and over	-15%	-27%	-2%	0%	-1%

DX.2.45 Applicants by domicile and age : Scotland

Difference between cycle and 2014 cycle



DX.2.46 Applicants by domicile and age : Scotland

Domicile and age group		2011	2012	2013	2014	2015
Scotland	Under 18	860	760	650	640	690
	18	18,900	18,690	18,800	19,210	19,390
	19	5,160	5,240	5,220	5,250	5,430
	20-24	8,560	8,570	9,500	9,700	9,750
	25-29	2,650	2,510	2,580	2,880	2,900
	30-34	1,380	1,250	1,320	1,410	1,490
	35 and over	1,800	1,670	1,640	1,850	1,870

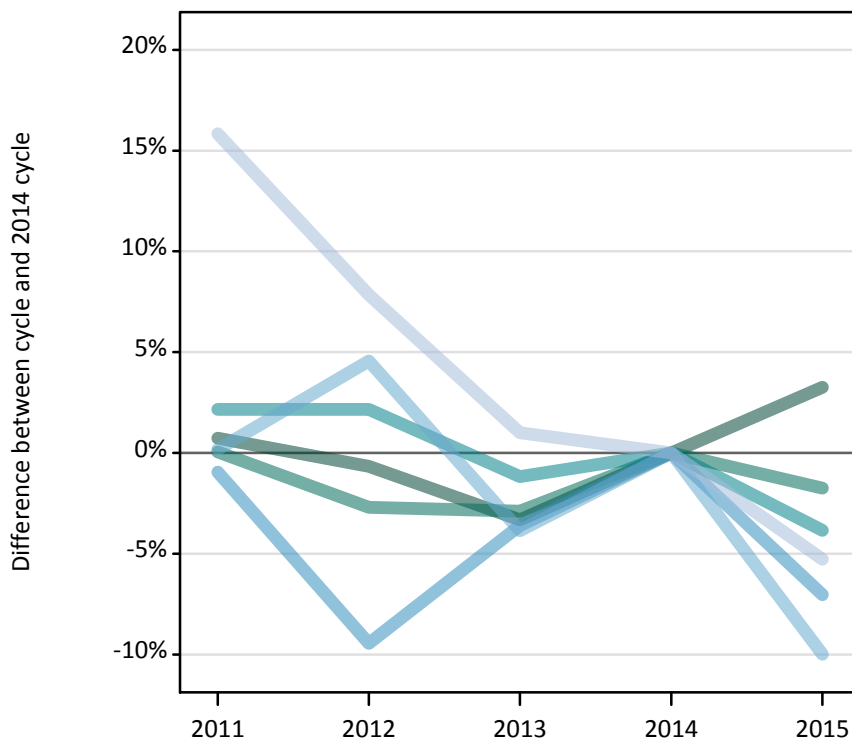
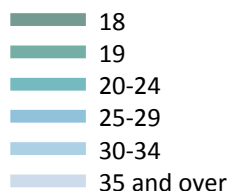
DX.2.47 Applicants by domicile and age : Scotland

Difference between cycle and 2014 cycle

Domicile and age group		2011	2012	2013	2014	2015
Scotland	Under 18	34%	19%	1%	0%	8%
	18	-2%	-3%	-2%	0%	1%
	19	-2%	-0%	-1%	0%	3%
	20-24	-12%	-12%	-2%	0%	1%
	25-29	-8%	-13%	-11%	0%	1%
	30-34	-2%	-11%	-7%	0%	5%
	35 and over	-3%	-10%	-12%	0%	1%

DX.2.48 Applicants by domicile and age : Wales

Difference between cycle and 2014 cycle



DX.2.49 Applicants by domicile and age : Wales

Domicile and age group		2011	2012	2013	2014	2015
Wales	Under 18	50	30	40	30	20
	18	11,370	11,210	10,910	11,280	11,650
	19	3,850	3,740	3,740	3,850	3,780
	20-24	3,490	3,490	3,380	3,420	3,280
	25-29	1,150	1,060	1,120	1,170	1,080
	30-34	570	600	550	570	510
	35 and over	810	760	710	700	660

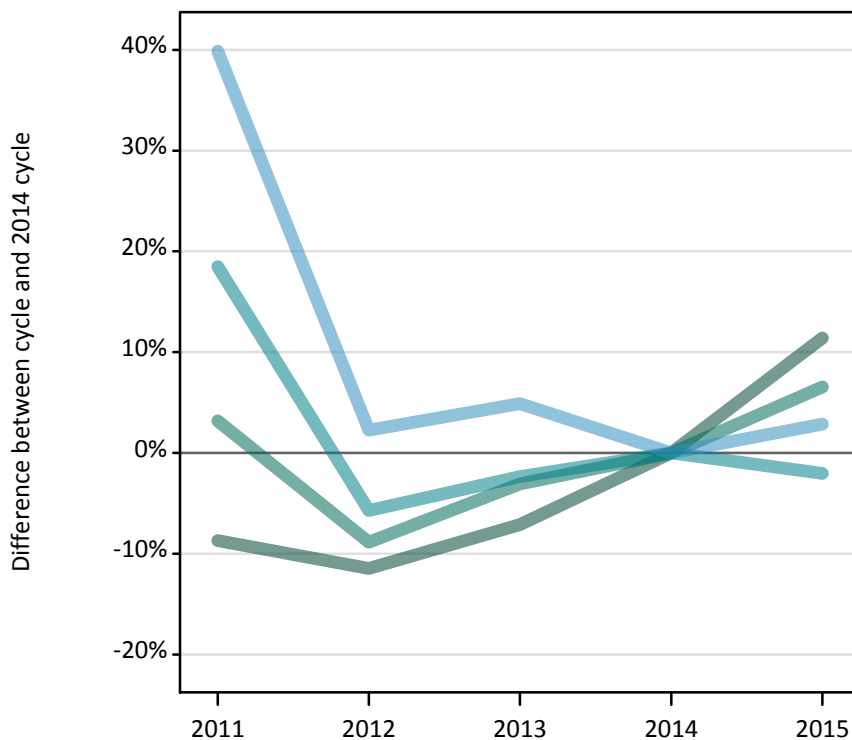
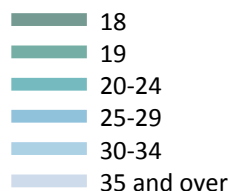
DX.2.50 Applicants by domicile and age : Wales

Difference between cycle and 2014 cycle

Domicile and age group		2011	2012	2013	2014	2015
Wales	Under 18	67%	-4%	33%	0%	-26%
	18	1%	-1%	-3%	0%	3%
	19	0%	-3%	-3%	0%	-2%
	20-24	2%	2%	-1%	0%	-4%
	25-29	-1%	-9%	-4%	0%	-7%
	30-34	0%	5%	-4%	0%	-10%
	35 and over	16%	8%	1%	0%	-5%

DX.2.51 Applicants by domicile and age : EU (excluding UK)

Difference between cycle and 2014 cycle



DX.2.52 Applicants by domicile and age : EU (excluding UK)

Domicile and age group		2011	2012	2013	2014	2015
EU (excluding UK)	Under 18	2,840	2,740	2,930	3,230	3,700
	18	12,760	12,370	12,980	13,970	15,570
	19	12,420	10,970	11,670	12,040	12,830
	20-24	10,790	8,580	8,890	9,100	8,920
	25-29	1,370	1,000	1,030	980	1,010
	30-34	350	290	270	230	240
	35 and over	220	220	210	220	190

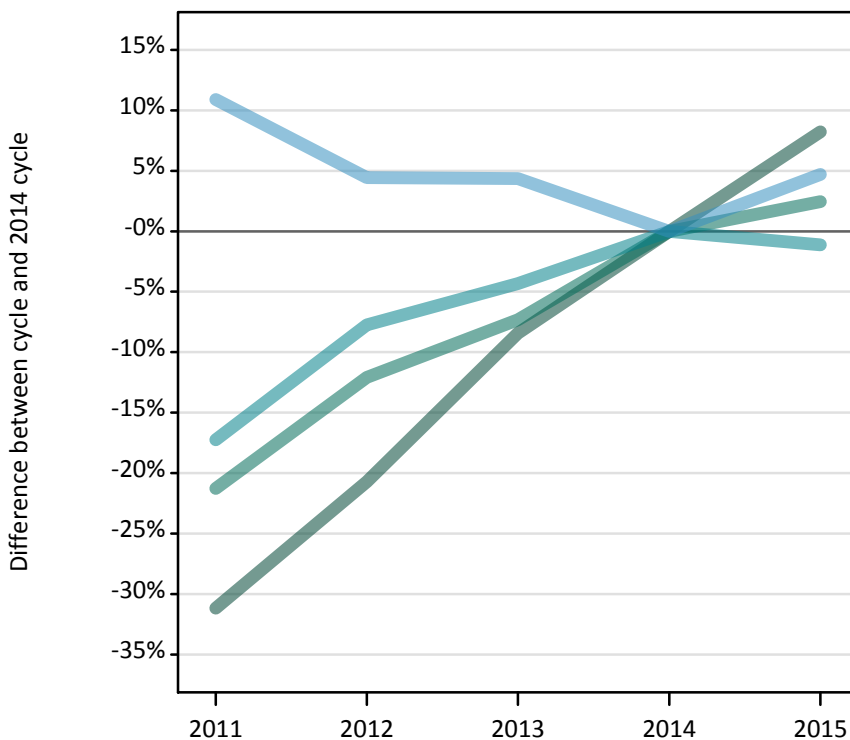
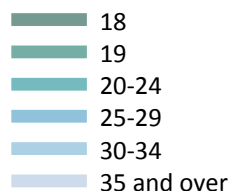
DX.2.53 Applicants by domicile and age : EU (excluding UK)

Difference between cycle and 2014 cycle

Domicile and age group		2011	2012	2013	2014	2015
EU (excluding UK)	Under 18	-12%	-15%	-9%	0%	15%
	18	-9%	-11%	-7%	0%	11%
	19	3%	-9%	-3%	0%	7%
	20-24	19%	-6%	-2%	0%	-2%
	25-29	40%	2%	5%	0%	3%
	30-34	50%	27%	17%	0%	3%
	35 and over	2%	0%	-4%	0%	-12%

DX.2.54 Applicants by domicile and age : Not EU

Difference between cycle and 2014 cycle



DX.2.55 Applicants by domicile and age : Not EU

Domicile and age group		2011	2012	2013	2014	2015
Not EU	Under 18	2,680	3,370	3,930	4,650	4,500
	18	13,230	15,240	17,600	19,220	20,800
	19	10,250	11,440	12,060	13,020	13,340
	20-24	9,560	10,660	11,060	11,560	11,430
	25-29	1,320	1,250	1,250	1,190	1,250
	30-34	420	390	370	380	370
	35 and over	290	290	250	270	290

DX.2.56 Applicants by domicile and age : Not EU

Difference between cycle and 2014 cycle

Domicile and age group		2011	2012	2013	2014	2015
Not EU	Under 18	-42%	-28%	-15%	0%	-3%
	18	-31%	-21%	-8%	0%	8%
	19	-21%	-12%	-7%	0%	2%
	20-24	-17%	-8%	-4%	0%	-1%
	25-29	11%	4%	4%	0%	5%
	30-34	9%	2%	-4%	0%	-3%
	35 and over	7%	5%	-10%	0%	4%

DX.2.57 Technical notes and definitions

These additional tables have been produced to help comparisons through time, particularly when considering Scottish domiciled applicants and Scottish providers.

In 2015, around 125 courses relating to teacher training that historically would only have been available through UCAS Teacher Training, and therefore not previously counted in the scope of this statistical release, were brought into the undergraduate UCAS scheme. These courses are all offered by providers based in Scotland and are in the JACS3 detailed subject reporting grouping of 'X1'. The large majority of applications to these courses are from applicants living in Scotland.

These additional tables exclude any applications made by applicants to subject group 'X1' at Scottish providers and provide a better 'like for like' comparison particularly when considering Scottish domiciled applicants and Scottish providers. The primary deadline applicant statistics which include all applications to Scottish providers are available upon the UCAS website.

Applicants have been able to submit applications for all 2015 courses since early September.

Applicants who submit their applications to UCAS by the January deadline are considered as 'on time' applicants for the large majority of courses offered through UCAS.

Counts of the number of applicants reported have been rounded to the nearest 10 applicants, this may result in instances where totals do not equal the sum of the components. Proportional changes have been rounded to the nearest whole percentage point.

Age

This statistical release uses country-specific age definitions which align with the cut off points for school/college cohorts within the different administrations of the UK. For England and Wales ages are defined on the 31 August, for Northern Ireland on the 1 July and for Scotland on the 28 February the following year. Defining ages in this way matches the assignment of children to school cohorts. For applicants outside of the UK the cohort cut off for England and Wales has been used.

Applicant

A person who has made an application in the UCAS system during the cycle reported, this includes those who submit applications for deferred entry.

Application

An application to a course at an institution made by an applicant. Applicants may make up to five applications.

Country of institution

The UK country of the institution applied to.

Domicile

Declared area of permanent residence. The Channel Islands and the Isle of Man have been assigned as 'Not EU'.

First time applicant

An applicant that did not apply to the UCAS scheme in the previous cycle.

Reapplicant

An applicant that applied to the UCAS scheme in the previous cycle.

Subject group

The JACS3 classification used to classify courses into subject groups.

Tariff group of institution

Institutions are grouped as higher, medium or lower tariff based on their average levels of attainment of their accepted applicants (summarised through UCAS Tariff points) in recent cycles. Each group of institutions accounted for around a third of all UK 18 year old acceptances in recent cycles.