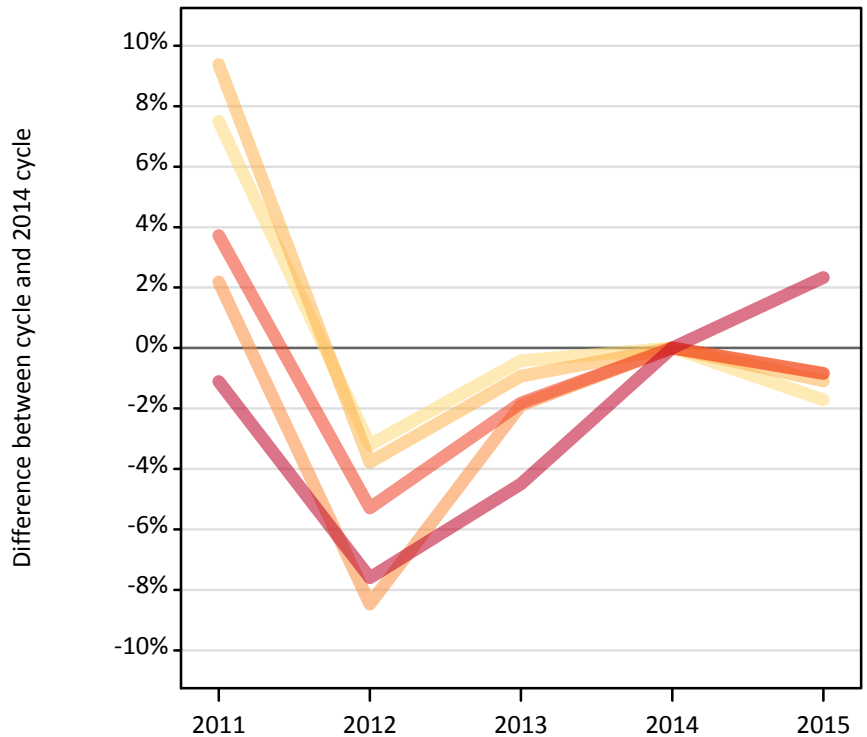
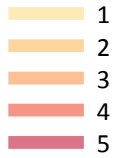


Applicants by number of applications at the 15 January deadline (No Scot. X1)

DX.4.1 Applicants by domicile and number of applications made : All domiciles

Difference between cycle and 2014 cycle



DX.4.2 Applicants by domicile and number of applications made : All domiciles

Domicile and number of applications made by applicant		2011	2012	2013	2014	2015
All domiciles	1	45,390	40,870	42,040	42,220	41,490
	2	23,780	20,920	21,540	21,740	21,500
	3	31,450	28,170	30,200	30,780	30,530
	4	57,300	52,320	54,240	55,240	54,780
	5	425,120	397,230	410,520	429,870	439,900
	All	583,030	539,500	558,530	579,860	588,200

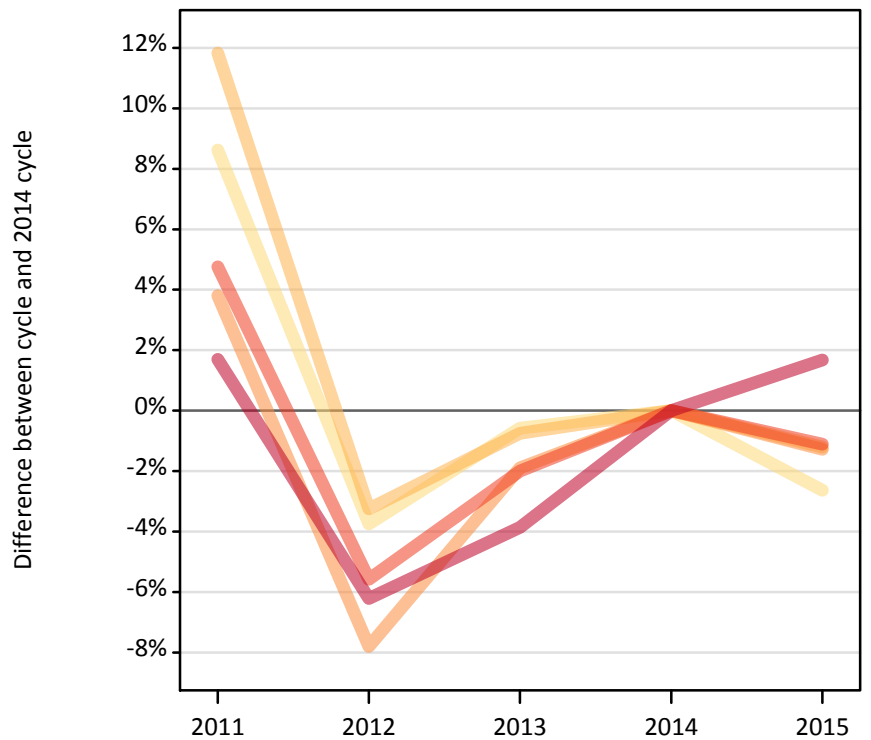
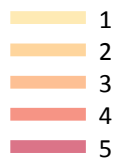
DX.4.3 Applicants by domicile and number of applications made : All domiciles

Difference between cycle and 2014 cycle

Domicile and number of applications made by applicant		2011	2012	2013	2014	2015
All domiciles	1	8%	-3%	-0%	0%	-2%
	2	9%	-4%	-1%	0%	-1%
	3	2%	-8%	-2%	0%	-1%
	4	4%	-5%	-2%	0%	-1%
	5	-1%	-8%	-5%	0%	2%
	All	1%	-7%	-4%	0%	1%

DX.4.4 Applicants by domicile and number of applications made : UK

Difference between cycle and 2014 cycle



DX.4.5 Applicants by domicile and number of applications made : UK

Domicile and number of applications made by applicant		2011	2012	2013	2014	2015
UK	1	38,900	34,470	35,600	35,810	34,870
	2	21,060	18,220	18,690	18,830	18,610
	3	27,670	24,580	26,150	26,660	26,320
	4	50,190	45,240	46,950	47,910	47,380
	5	366,710	338,180	346,650	360,580	366,610
	All	504,530	460,690	474,050	489,800	493,780

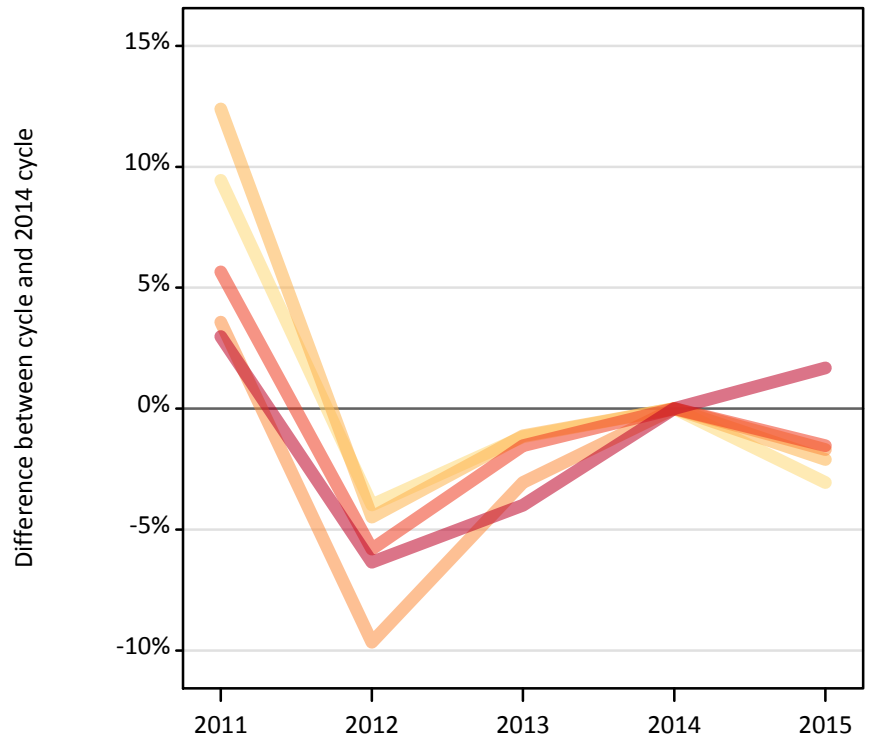
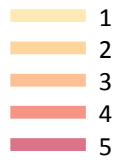
DX.4.6 Applicants by domicile and number of applications made : UK

Difference between cycle and 2014 cycle

Domicile and number of applications made by applicant		2011	2012	2013	2014	2015
UK	1	9%	-4%	-1%	0%	-3%
	2	12%	-3%	-1%	0%	-1%
	3	4%	-8%	-2%	0%	-1%
	4	5%	-6%	-2%	0%	-1%
	5	2%	-6%	-4%	0%	2%
	All	3%	-6%	-3%	0%	1%

DX.4.7 Applicants by domicile and number of applications made : England

Difference between cycle and 2014 cycle



DX.4.8 Applicants by domicile and number of applications made : England

Domicile and number of applications made by applicant		2011	2012	2013	2014	2015
England	1	31,180	27,360	28,160	28,490	27,620
	2	15,890	13,500	13,980	14,140	13,840
	3	21,310	18,590	19,940	20,570	20,220
	4	40,690	36,270	37,920	38,510	37,920
	5	315,740	287,120	294,340	306,590	311,740
	All	424,800	382,840	394,330	408,300	411,340

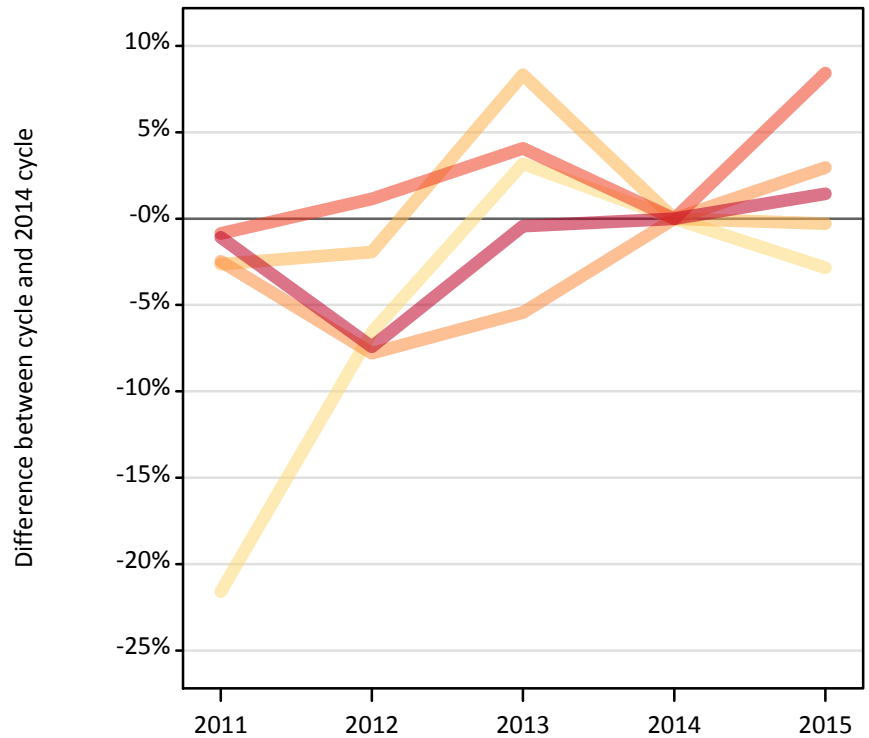
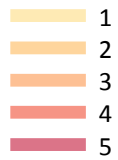
DX.4.9 Applicants by domicile and number of applications made : England

Difference between cycle and 2014 cycle

Domicile and number of applications made by applicant		2011	2012	2013	2014	2015
England	1	9%	-4%	-1%	0%	-3%
	2	12%	-4%	-1%	0%	-2%
	3	4%	-10%	-3%	0%	-2%
	4	6%	-6%	-2%	0%	-2%
	5	3%	-6%	-4%	0%	2%
	All	4%	-6%	-3%	0%	1%

DX.4.10 Applicants by domicile and number of applications made : Northern Ireland

Difference between cycle and 2014 cycle



DX.4.11 Applicants by domicile and number of applications made : Northern Ireland

Domicile and number of applications made by applicant		2011	2012	2013	2014	2015
Northern Ireland	1	720	850	940	910	890
	2	700	710	780	720	720
	3	990	930	960	1,010	1,040
	4	1,730	1,770	1,820	1,750	1,890
	5	14,990	14,030	15,090	15,160	15,380
	All	19,130	18,290	19,590	19,550	19,920

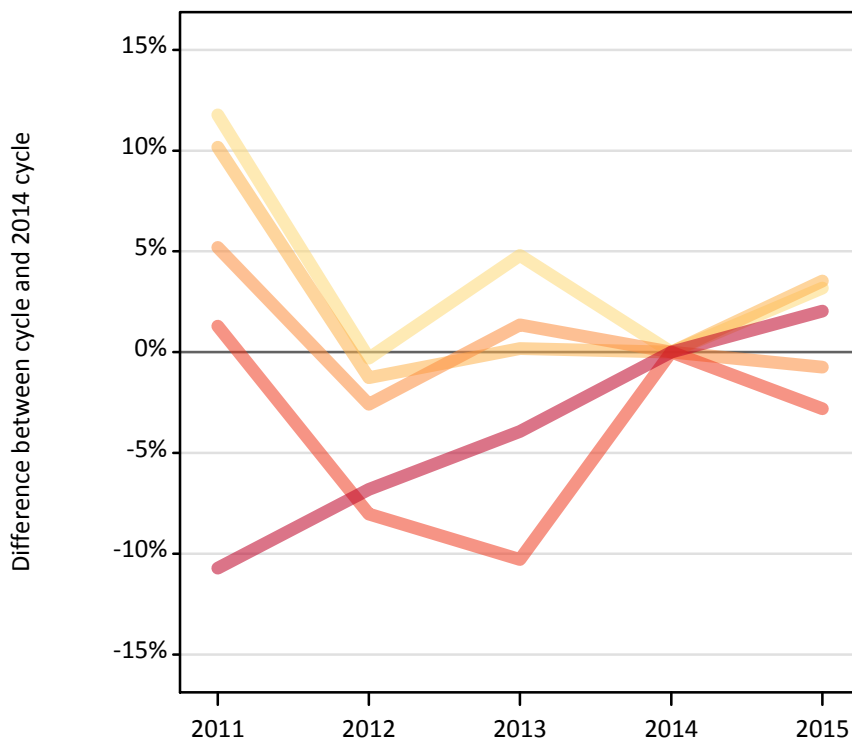
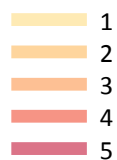
DX.4.12 Applicants by domicile and number of applications made : Northern Ireland

Difference between cycle and 2014 cycle

Domicile and number of applications made by applicant		2011	2012	2013	2014	2015
Northern Ireland	1	-22%	-7%	3%	0%	-3%
	2	-3%	-2%	8%	0%	-0%
	3	-2%	-8%	-5%	0%	3%
	4	-1%	1%	4%	0%	8%
	5	-1%	-7%	-0%	0%	1%
	All	-2%	-6%	0%	0%	2%

DX.4.13 Applicants by domicile and number of applications made : Scotland

Difference between cycle and 2014 cycle



DX.4.14 Applicants by domicile and number of applications made : Scotland

Domicile and number of applications made by applicant		2011	2012	2013	2014	2015
Scotland	1	4,930	4,400	4,620	4,410	4,550
	2	3,150	2,830	2,870	2,860	2,960
	3	3,670	3,400	3,530	3,490	3,460
	4	5,210	4,730	4,610	5,140	5,000
	5	22,360	23,340	24,060	25,040	25,550
	All	39,320	38,680	39,690	40,940	41,520

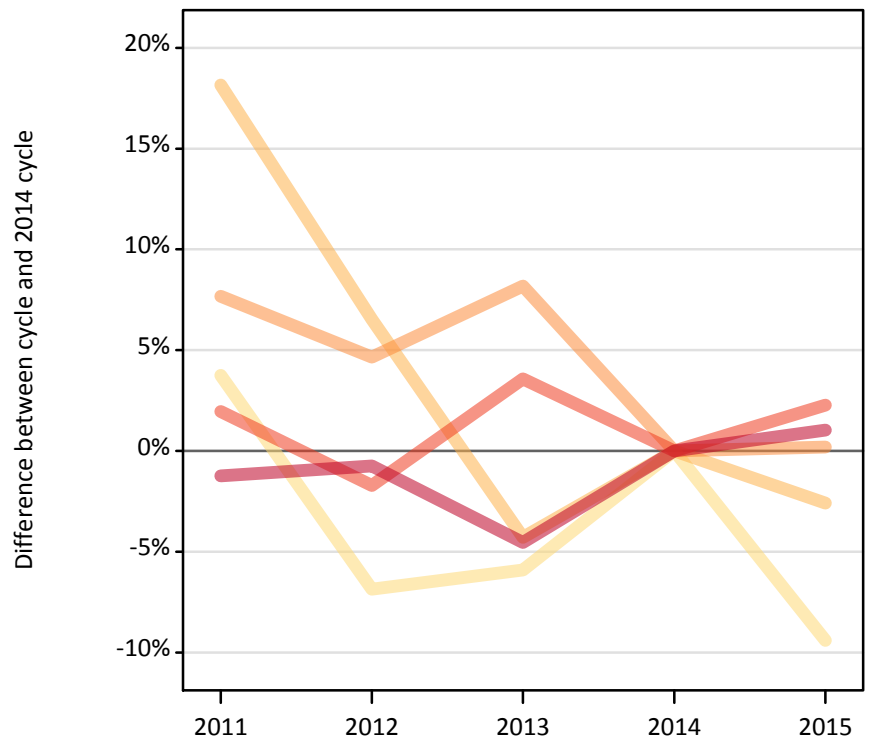
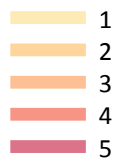
DX.4.15 Applicants by domicile and number of applications made : Scotland

Difference between cycle and 2014 cycle

Domicile and number of applications made by applicant		2011	2012	2013	2014	2015
Scotland	1	12%	-0%	5%	0%	3%
	2	10%	-1%	0%	0%	4%
	3	5%	-3%	1%	0%	-1%
	4	1%	-8%	-10%	0%	-3%
	5	-11%	-7%	-4%	0%	2%
	All	-4%	-6%	-3%	0%	1%

DX.4.16 Applicants by domicile and number of applications made : Wales

Difference between cycle and 2014 cycle



DX.4.17 Applicants by domicile and number of applications made : Wales

Domicile and number of applications made by applicant		2011	2012	2013	2014	2015
Wales	1	2,070	1,860	1,880	2,000	1,810
	2	1,320	1,190	1,070	1,120	1,090
	3	1,710	1,660	1,720	1,590	1,590
	4	2,560	2,470	2,600	2,510	2,570
	5	13,620	13,690	13,170	13,790	13,940
	All	21,290	20,880	20,440	21,010	21,000

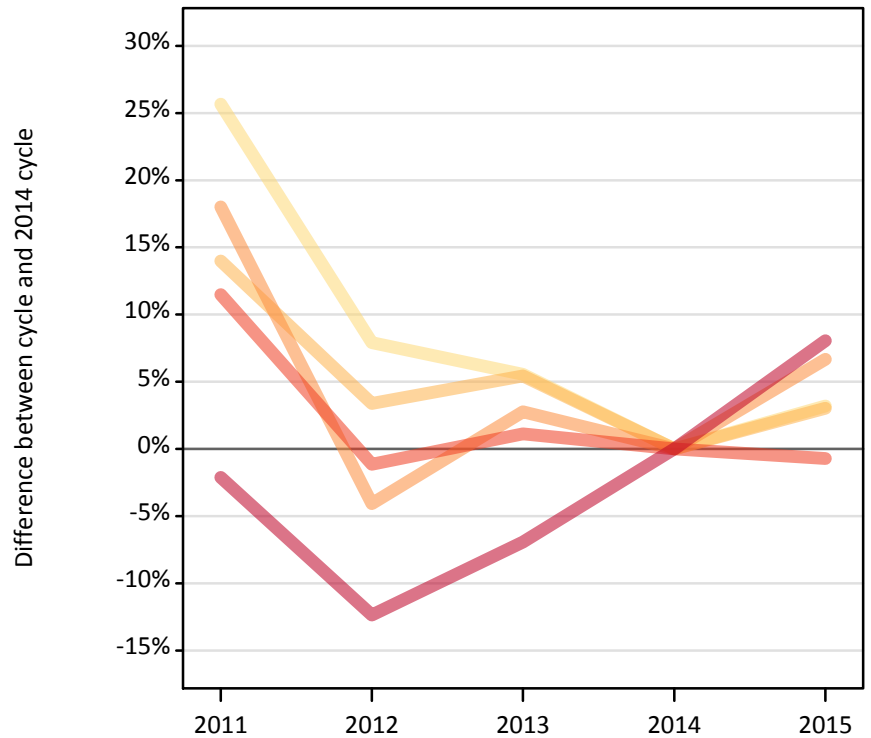
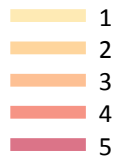
DX.4.18 Applicants by domicile and number of applications made : Wales

Difference between cycle and 2014 cycle

Domicile and number of applications made by applicant		2011	2012	2013	2014	2015
Wales	1	4%	-7%	-6%	0%	-9%
	2	18%	7%	-4%	0%	-3%
	3	8%	5%	8%	0%	0%
	4	2%	-2%	4%	0%	2%
	5	-1%	-1%	-5%	0%	1%
	All	1%	-1%	-3%	0%	-0%

DX.4.19 Applicants by domicile and number of applications made : EU (excluding UK)

Difference between cycle and 2014 cycle



DX.4.20 Applicants by domicile and number of applications made : EU (excluding UK)

Domicile and number of applications made by applicant		2011	2012	2013	2014	2015
EU (excluding UK)	1	3,690	3,170	3,100	2,930	3,030
	2	1,550	1,410	1,430	1,360	1,400
	3	1,970	1,600	1,710	1,670	1,780
	4	3,710	3,290	3,360	3,320	3,300
	5	29,840	26,720	28,380	30,490	32,940
	All	40,750	36,170	37,980	39,770	42,440

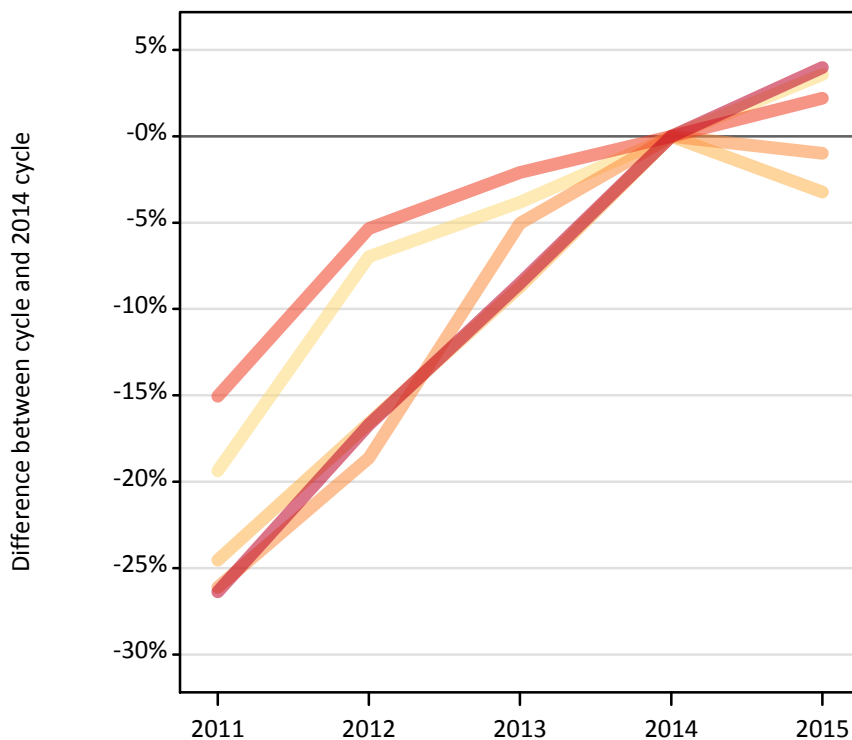
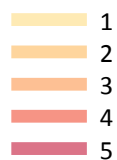
DX.4.21 Applicants by domicile and number of applications made : EU (excluding UK)

Difference between cycle and 2014 cycle

Domicile and number of applications made by applicant		2011	2012	2013	2014	2015
EU (excluding UK)	1	26%	8%	6%	0%	3%
	2	14%	3%	5%	0%	3%
	3	18%	-4%	3%	0%	7%
	4	11%	-1%	1%	0%	-1%
	5	-2%	-12%	-7%	0%	8%
	All	2%	-9%	-5%	0%	7%

DX.4.22 Applicants by domicile and number of applications made : Not EU

Difference between cycle and 2014 cycle



DX.4.23 Applicants by domicile and number of applications made : Not EU

Domicile and number of applications made by applicant		2011	2012	2013	2014	2015
Not EU	1	2,800	3,230	3,340	3,480	3,600
	2	1,170	1,290	1,410	1,550	1,500
	3	1,810	2,000	2,330	2,450	2,430
	4	3,400	3,790	3,920	4,010	4,090
	5	28,570	32,320	35,500	38,810	40,350
	All	37,760	42,640	46,510	50,290	51,970

DX.4.24 Applicants by domicile and number of applications made : Not EU

Difference between cycle and 2014 cycle

Domicile and number of applications made by applicant		2011	2012	2013	2014	2015
Not EU	1	-19%	-7%	-4%	0%	4%
	2	-25%	-17%	-9%	0%	-3%
	3	-26%	-19%	-5%	0%	-1%
	4	-15%	-5%	-2%	0%	2%
	5	-26%	-17%	-9%	0%	4%
	All	-25%	-15%	-8%	0%	3%

DX.4.25 Technical notes and definitions

These additional tables have been produced to help comparisons through time, particularly when considering Scottish domiciled applicants and Scottish providers.

In 2015, around 125 courses relating to teacher training that historically would only have been available through UCAS Teacher Training, and therefore not previously counted in the scope of this statistical release, were brought into the undergraduate UCAS scheme. These courses are all offered by providers based in Scotland and are in the JACS3 detailed subject reporting grouping of 'X1'. The large majority of applications to these courses are from applicants living in Scotland.

These additional tables exclude any applications made by applicants to subject group 'X1' at Scottish providers and provide a better 'like for like' comparison particularly when considering Scottish domiciled applicants and Scottish providers. The primary deadline applicant statistics which include all applications to Scottish providers are available upon the UCAS website.

Applicants have been able to submit applications for all 2015 courses since early September.

Applicants who submit their applications to UCAS by the January deadline are considered as 'on time' applicants for the large majority of courses offered through UCAS.

Counts of the number of applicants reported have been rounded to the nearest 10 applicants, this may result in instances where totals do not equal the sum of the components. Proportional changes have been rounded to the nearest whole percentage point.

Age

This statistical release uses country-specific age definitions which align with the cut off points for school/college cohorts within the different administrations of the UK. For England and Wales ages are defined on the 31 August, for Northern Ireland on the 1 July and for Scotland on the 28 February the following year. Defining ages in this way matches the assignment of children to school cohorts. For applicants outside of the UK the cohort cut off for England and Wales has been used.

Applicant

A person who has made an application in the UCAS system during the cycle reported, this includes those who submit applications for deferred entry.

Application

An application to a course at an institution made by an applicant. Applicants may make up to five applications.

Country of institution

The UK country of the institution applied to.

Domicile

Declared area of permanent residence. The Channel Islands and the Isle of Man have been assigned as 'Not EU'.

First time applicant

An applicant that did not apply to the UCAS scheme in the previous cycle.

Reapplicant

An applicant that applied to the UCAS scheme in the previous cycle.

Subject group

The JACS3 classification used to classify courses into subject groups.

Tariff group of institution

Institutions are grouped as higher, medium or lower tariff based on their average levels of attainment of their accepted applicants (summarised through UCAS Tariff points) in recent cycles. Each group of institutions accounted for around a third of all UK 18 year old acceptances in recent cycles.