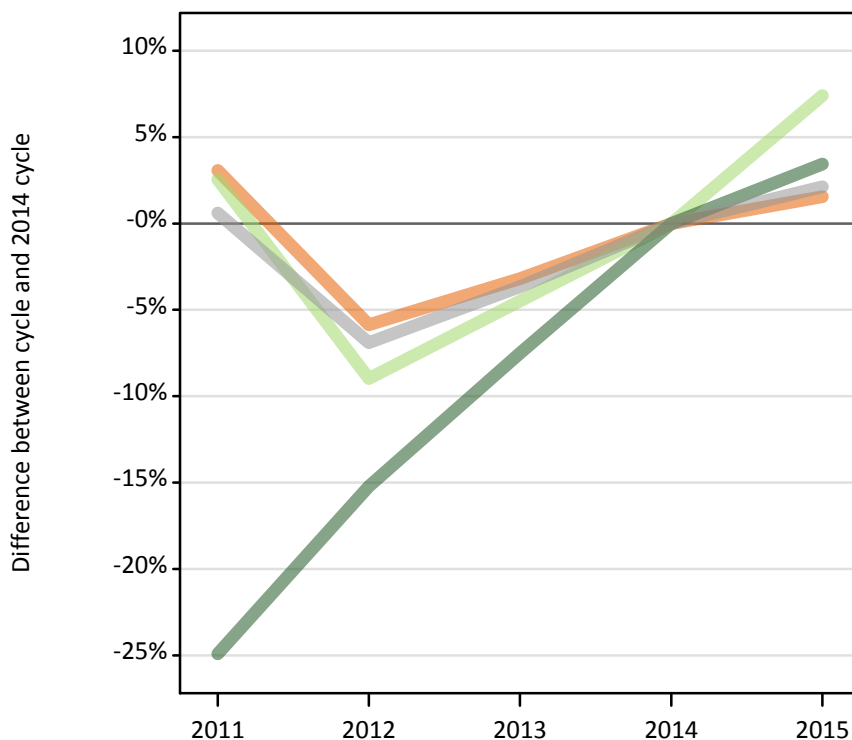


Applicants by domicile at the 15 January deadline

D.1.1 Applicants by domicile group

Difference between cycle and 2014 cycle



D.1.2 Applicants by domicile group

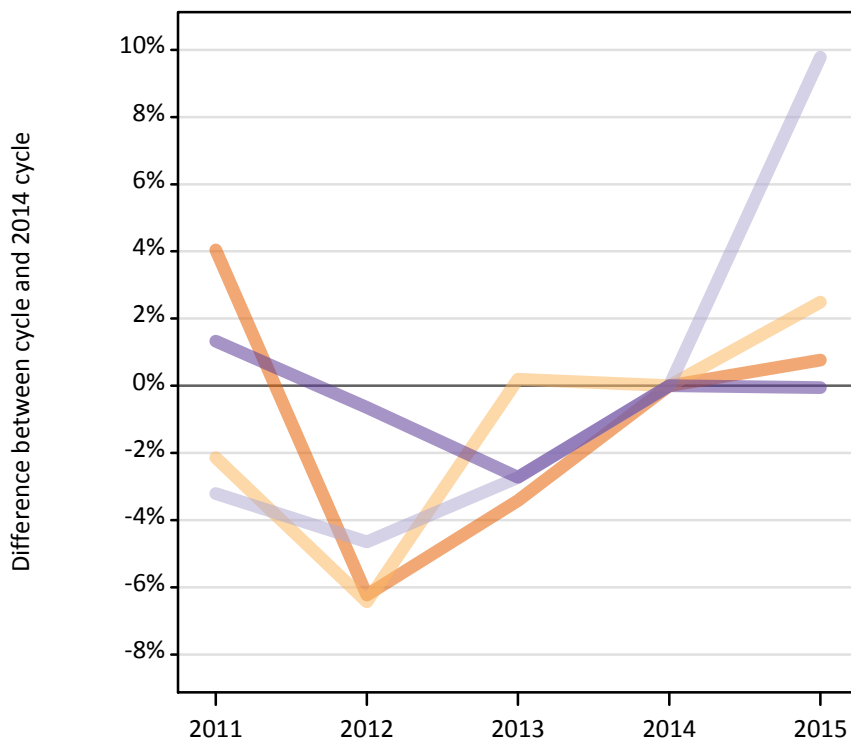
Domicile group of applicant	2011	2012	2013	2014	2015
UK	504,980	461,180	474,310	489,940	497,550
EU (excluding UK)	40,790	36,210	37,990	39,780	42,720
Not EU	37,760	42,640	46,510	50,290	52,020
All domiciles	583,530	540,020	558,820	580,000	592,290

D.1.3 Applicants by domicile group

Difference between cycle and 2014 cycle

Domicile group of applicant	2011	2012	2013	2014	2015
UK	3%	-6%	-3%	0%	2%
EU (excluding UK)	3%	-9%	-4%	0%	7%
Not EU	-25%	-15%	-8%	0%	3%
All domiciles	1%	-7%	-4%	0%	2%

D.1.4 Applicants by UK country of domicile Difference between cycle and 2014 cycle



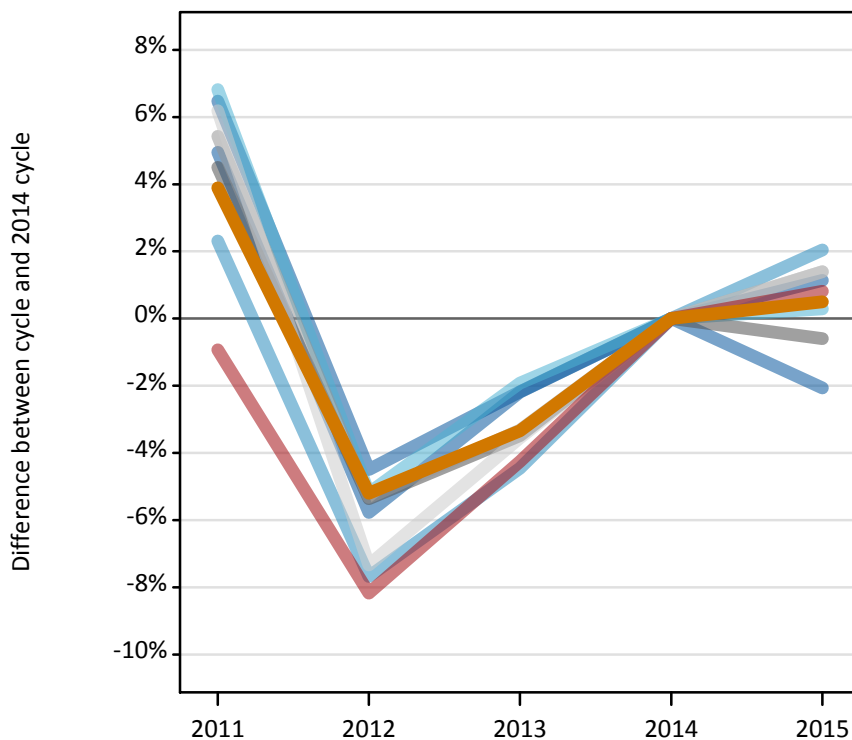
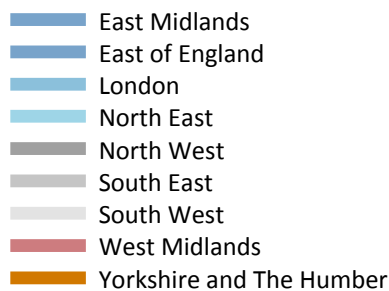
D.1.5 Applicants by UK country of domicile

Domicile group of applicant	2011	2012	2013	2014	2015
England	424,800	382,840	394,330	408,300	411,420
Northern Ireland	19,130	18,290	19,590	19,550	20,040
Scotland	39,760	39,170	39,950	41,080	45,100
Wales	21,290	20,880	20,440	21,010	21,000
UK	504,980	461,180	474,310	489,940	497,550

D.1.6 Applicants by UK country of domicile Difference between cycle and 2014 cycle

Domicile group of applicant	2011	2012	2013	2014	2015
England	4%	-6%	-3%	0%	1%
Northern Ireland	-2%	-6%	0%	0%	2%
Scotland	-3%	-5%	-3%	0%	10%
Wales	1%	-1%	-3%	0%	-0%
UK	3%	-6%	-3%	0%	2%

D.1.7 Applicants by English region of domicile Difference between cycle and 2014 cycle



D.1.8 Applicants by English region of domicile

English region	2011	2012	2013	2014	2015
North East	19,030	16,890	17,470	17,810	17,860
Yorkshire and The Humber	38,920	35,510	36,210	37,460	37,650
North West	57,840	52,380	53,420	55,350	55,010
East Midlands	33,470	30,020	30,750	31,430	30,780
West Midlands	43,270	40,110	41,820	43,680	44,040
East of England	43,650	39,190	40,680	41,590	42,070
London	80,470	72,620	75,150	78,660	80,270
South East	68,820	61,800	63,110	65,280	66,190
South West	39,340	34,320	35,730	37,040	37,560

D.1.9 Applicants by English region of domicile Difference between cycle and 2014 cycle

English region	2011	2012	2013	2014	2015
North East	7%	-5%	-2%	0%	0%
Yorkshire and The Humber	4%	-5%	-3%	0%	0%
North West	5%	-5%	-3%	0%	-1%
East Midlands	6%	-4%	-2%	0%	-2%
West Midlands	-1%	-8%	-4%	0%	1%
East of England	5%	-6%	-2%	0%	1%
London	2%	-8%	-4%	0%	2%
South East	5%	-5%	-3%	0%	1%
South West	6%	-7%	-4%	0%	1%

D.1.10 Applicants by declared country of domicile

Selected countries

Declared country of domicile	2011	2012	2013	2014	2015
Angola	40	40	50	50	110
Australia	320	400	450	480	510
Austria	490	500	520	540	570
Azerbaijan	110	140	150	190	180
Bahrain	210	240	280	280	250
Bangladesh	240	250	210	210	210
Belgium	900	790	860	920	990
Bermuda	200	170	150	170	150
Botswana	30	40	60	90	130
Brazil	110	150	160	190	230
Brunei	460	460	550	650	380
Bulgaria	2,230	2,140	2,440	2,160	2,130
Canada	1,510	1,670	1,700	1,690	1,750
Cayman Islands	90	90	80	110	80
China	5,240	6,280	6,900	7,170	8,010
Croatia	30	30	60	120	190
Cyprus (European Union)	3,460	2,840	2,850	2,810	2,780
Czech Republic	420	400	410	520	680
Denmark	380	360	400	390	410
Egypt	170	240	380	470	540
Estonia	560	480	550	440	450
Finland	790	660	720	800	900
France	3,480	3,180	3,380	3,850	4,340
Germany	3,490	2,940	2,750	2,740	2,910
Ghana	140	150	140	190	170
Gibraltar	290	270	290	270	270
Greece	2,050	1,860	1,990	1,970	1,970
Guernsey	300	290	280	290	310
Hong Kong	3,640	5,000	5,050	5,460	5,260
Hungary	360	520	720	730	790
India	1,870	2,190	2,610	2,870	3,020
Indonesia	210	250	350	380	480
Iran	260	270	180	170	150
Ireland	6,710	5,430	5,450	5,230	5,170
Isle of Man	540	490	470	480	450
Israel	80	90	110	90	110
Italy	2,070	2,230	2,730	3,440	4,120
Japan	320	350	400	440	390
Jersey	570	540	510	480	490
Jordan	280	280	330	330	330
Kazakhstan	280	250	280	270	270
Kenya	470	490	500	510	510
Korea (South)	1,060	1,030	1,110	1,050	1,160
Kuwait	200	240	240	290	330

Declared country of domicile	2011	2012	2013	2014	2015
Latvia	890	640	480	460	450
Lebanon	110	140	160	180	210
Lithuania	2,940	2,160	1,860	1,680	1,520
Luxembourg	360	360	400	440	420
Macao	90	130	120	150	220
Malaysia	2,270	2,590	3,230	4,080	4,210
Malta	120	80	100	90	90
Mauritius	320	330	250	340	280
Mexico	90	100	110	110	130
Morocco	140	170	220	270	290
Netherlands	720	650	680	710	770
New Zealand	120	120	140	160	160
Nigeria	1,030	960	1,060	1,120	1,060
Norway	810	840	990	960	990
Oman	120	110	140	160	210
Pakistan	1,440	1,370	1,370	1,350	1,390
Philippines	80	80	100	100	130
Poland	1,740	1,630	1,880	2,160	2,400
Portugal	590	550	680	710	900
Qatar	150	180	270	230	270
Romania	2,250	2,210	2,110	2,340	2,930
Russia	560	630	820	1,000	1,130
Saudi Arabia	490	530	560	580	600
Serbia	60	80	120	100	90
Singapore	2,790	3,240	3,460	3,730	3,560
Slovakia	410	420	400	530	520
Slovenia	100	90	120	140	150
South Africa	170	190	220	250	310
Spain	1,430	1,380	1,770	2,140	2,520
Sri Lanka	310	260	250	240	190
Sweden	1,490	1,360	1,360	1,370	1,300
Switzerland	810	870	1,010	1,030	1,150
Taiwan	230	240	230	270	300
Tanzania	110	100	110	140	120
Thailand	520	580	550	630	650
Trinidad and Tobago	140	140	150	140	180
Turkey	320	380	450	490	510
Ukraine	160	180	250	270	230
United Arab Emirates	640	740	830	1,000	1,150
United States of America	2,150	2,370	2,710	2,930	3,080
Vietnam	470	530	520	460	370
Zimbabwe	190	230	220	240	260

D.1.11 Applicants by declared country of domicile

Selected countries, difference between cycle and 2014 cycle

Declared country of domicile	2011	2012	2013	2014	2015
Angola	-29%	-24%	-4%	0%	118%
Australia	-35%	-18%	-6%	0%	5%
Austria	-10%	-7%	-4%	0%	5%
Azerbaijan	-41%	-26%	-25%	0%	-9%
Bahrain	-24%	-13%	-1%	0%	-12%
Bangladesh	12%	18%	-2%	0%	-0%
Belgium	-2%	-14%	-6%	0%	8%
Bermuda	18%	-1%	-8%	0%	-8%
Botswana	-67%	-52%	-38%	0%	49%
Brazil	-41%	-23%	-14%	0%	20%
Brunei	-30%	-29%	-16%	0%	-43%
Bulgaria	3%	-1%	13%	0%	-1%
Canada	-11%	-1%	0%	0%	4%
Cayman Islands	-14%	-17%	-21%	0%	-20%
China	-27%	-12%	-4%	0%	12%
Croatia	-72%	-73%	-52%	0%	54%
Cyprus (European Union)	23%	1%	1%	0%	-1%
Czech Republic	-20%	-23%	-20%	0%	32%
Denmark	-1%	-7%	3%	0%	6%
Egypt	-64%	-50%	-19%	0%	14%
Estonia	28%	8%	24%	0%	1%
Finland	-2%	-18%	-10%	0%	12%
France	-9%	-17%	-12%	0%	13%
Germany	27%	8%	1%	0%	6%
Ghana	-24%	-21%	-27%	0%	-10%
Gibraltar	7%	-2%	7%	0%	-0%
Greece	4%	-6%	1%	0%	0%
Guernsey	2%	-1%	-2%	0%	6%
Hong Kong	-33%	-8%	-8%	0%	-4%
Hungary	-50%	-29%	-2%	0%	8%
India	-35%	-24%	-9%	0%	5%
Indonesia	-46%	-35%	-8%	0%	26%
Iran	51%	57%	2%	0%	-15%
Ireland	28%	4%	4%	0%	-1%
Isle of Man	11%	3%	-2%	0%	-7%
Israel	-14%	-1%	30%	0%	19%
Italy	-40%	-35%	-21%	0%	20%
Japan	-28%	-20%	-9%	0%	-12%
Jersey	20%	13%	7%	0%	3%
Jordan	-14%	-15%	-2%	0%	-2%
Kazakhstan	5%	-5%	5%	0%	-1%
Kenya	-7%	-3%	-1%	0%	1%
Korea (South)	0%	-2%	5%	0%	10%
Kuwait	-31%	-18%	-18%	0%	14%

Declared country of domicile	2011	2012	2013	2014	2015
Latvia	95%	40%	5%	0%	-1%
Lebanon	-39%	-22%	-13%	0%	15%
Lithuania	75%	29%	11%	0%	-9%
Luxembourg	-19%	-20%	-9%	0%	-5%
Macao	-41%	-18%	-22%	0%	42%
Malaysia	-44%	-36%	-21%	0%	3%
Malta	36%	-2%	12%	0%	4%
Mauritius	-8%	-6%	-27%	0%	-18%
Mexico	-21%	-14%	1%	0%	16%
Morocco	-47%	-38%	-20%	0%	9%
Netherlands	1%	-8%	-5%	0%	9%
New Zealand	-23%	-22%	-14%	0%	4%
Nigeria	-8%	-15%	-5%	0%	-6%
Norway	-15%	-12%	3%	0%	3%
Oman	-28%	-30%	-12%	0%	28%
Pakistan	6%	2%	1%	0%	3%
Philippines	-16%	-23%	0%	0%	29%
Poland	-20%	-25%	-13%	0%	11%
Portugal	-17%	-23%	-4%	0%	26%
Qatar	-34%	-20%	18%	0%	18%
Romania	-4%	-6%	-10%	0%	25%
Russia	-44%	-37%	-19%	0%	13%
Saudi Arabia	-16%	-9%	-3%	0%	3%
Serbia	-40%	-21%	18%	0%	-11%
Singapore	-25%	-13%	-7%	0%	-4%
Slovakia	-22%	-20%	-23%	0%	-1%
Slovenia	-32%	-34%	-19%	0%	8%
South Africa	-34%	-24%	-11%	0%	23%
Spain	-33%	-35%	-17%	0%	18%
Sri Lanka	29%	7%	2%	0%	-22%
Sweden	9%	-1%	-1%	0%	-5%
Switzerland	-21%	-15%	-2%	0%	11%
Taiwan	-13%	-11%	-15%	0%	13%
Tanzania	-22%	-29%	-18%	0%	-15%
Thailand	-18%	-8%	-13%	0%	4%
Trinidad and Tobago	0%	-4%	3%	0%	28%
Turkey	-35%	-21%	-8%	0%	5%
Ukraine	-42%	-32%	-5%	0%	-13%
United Arab Emirates	-36%	-26%	-17%	0%	15%
United States of America	-27%	-19%	-7%	0%	5%
Vietnam	4%	16%	15%	0%	-19%
Zimbabwe	-20%	-4%	-11%	0%	7%

D.1.12 Technical notes and definitions

Applicants have been able to submit applications for all 2015 courses since early September.

Applicants who submit their applications to UCAS by the January deadline are considered as 'on time' applicants for the large majority of courses offered through UCAS.

In 2015, around 125 courses relating to teacher training that historically would only have been available through UCAS Teacher Training, and therefore not previously counted in the scope of this statistical release, were brought into the undergraduate UCAS scheme. These courses are all offered by providers based in Scotland and are in the JACS3 detailed subject reporting grouping of 'X1'. The large majority of applications to these courses are from applicants living in Scotland.

To help comparisons through time, additional tables are available on the UCAS website that exclude any applications made by applicants to subject group 'X1' at Scottish providers. These tables provide a better 'like for like' comparison particularly when considering Scottish domiciled applicants and Scottish providers.

Counts of the number of applicants reported have been rounded to the nearest 10 applicants, this may result in instances where totals do not equal the sum of the components. Proportional changes have been rounded to the nearest whole percentage point.

Age

This statistical release uses country-specific age definitions which align with the cut off points for school/college cohorts within the different administrations of the UK. For England and Wales ages are defined on the 31 August, for Northern Ireland on the 1 July and for Scotland on the 28 February the following year. Defining ages in this way matches the assignment of children to school cohorts. For applicants outside of the UK the cohort cut off for England and Wales has been used.

Applicant

A person who has made an application in the UCAS system during the cycle reported, this includes those who submit applications for deferred entry.

Application

An application to a course at an institution made by an applicant. Applicants may make up to five applications.

Country of institution

The UK country of the institution applied to.

Domicile

Declared area of permanent residence. The Channel Islands and the Isle of Man have been assigned as 'Not EU'.

First time applicant

An applicant that did not apply to the UCAS scheme in the previous cycle.

Reapplicant

An applicant that applied to the UCAS scheme in the previous cycle.

Subject group

The JACS3 classification used to classify courses into subject groups.

Tariff group of institution

Institutions are grouped as higher, medium or lower tariff based on their average levels of attainment of their accepted applicants (summarised through UCAS Tariff points) in recent cycles. Each group of institutions accounted for around a third of all UK 18 year old acceptances in recent cycles.