

## Applicants by sex and age at the 15 January deadline

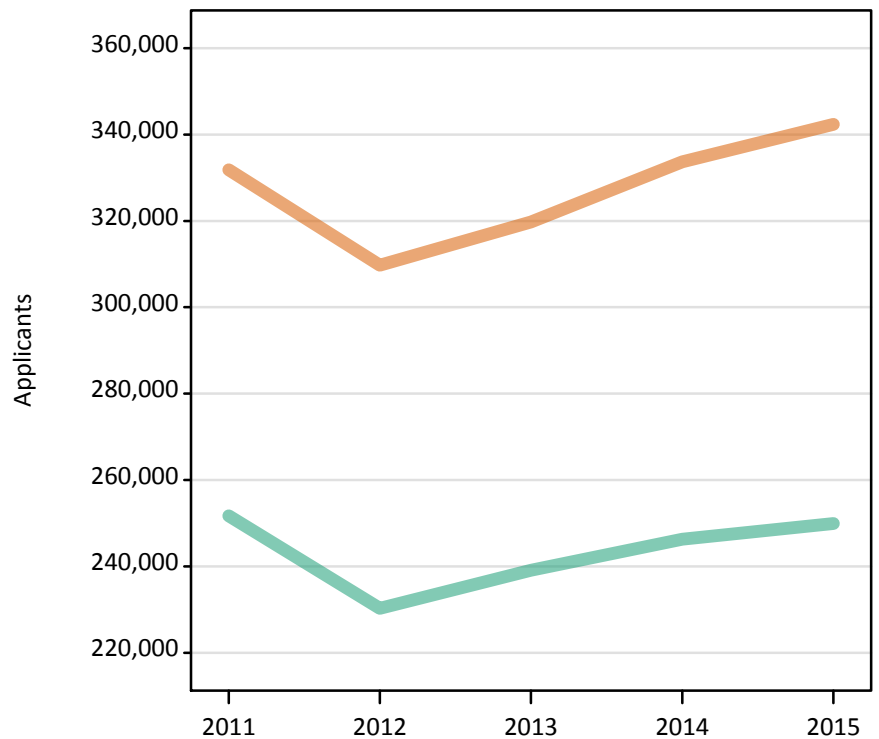
### D.2.1 Applicants by sex : All domiciles Difference between cycle and 2014 cycle

Men  
Women



### D.2.2 Applicants by sex : All domiciles

Men  
Women



### D.2.3 Applicants by age and sex : All domiciles

Age group and sex of applicant		2011	2012	2013	2014	2015
Under 18	Women	4,480	4,510	4,760	5,470	5,610
	Men	3,100	3,300	3,630	3,970	4,240
18	Women	160,790	157,520	160,080	165,310	174,440
	Men	127,470	122,710	125,210	129,310	133,020
19	Women	65,890	56,650	62,460	65,030	65,910
	Men	55,500	47,000	52,080	53,000	53,960
20-24	Women	58,280	52,890	54,790	58,010	56,720
	Men	46,080	40,250	41,480	42,740	41,530
25-29	Women	17,330	15,560	15,970	16,790	17,140
	Men	9,220	7,850	8,110	8,230	8,230
30-34	Women	9,860	9,090	8,950	9,310	9,120
	Men	4,470	3,870	3,670	3,750	3,630
35 and over	Women	15,170	13,510	12,720	13,790	13,400
	Men	5,900	5,330	4,900	5,310	5,330
All ages	Women	331,800	309,720	319,740	333,700	342,350
	Men	251,730	230,300	239,080	246,300	249,940

### D.2.4 Applicants by age and sex : All domiciles

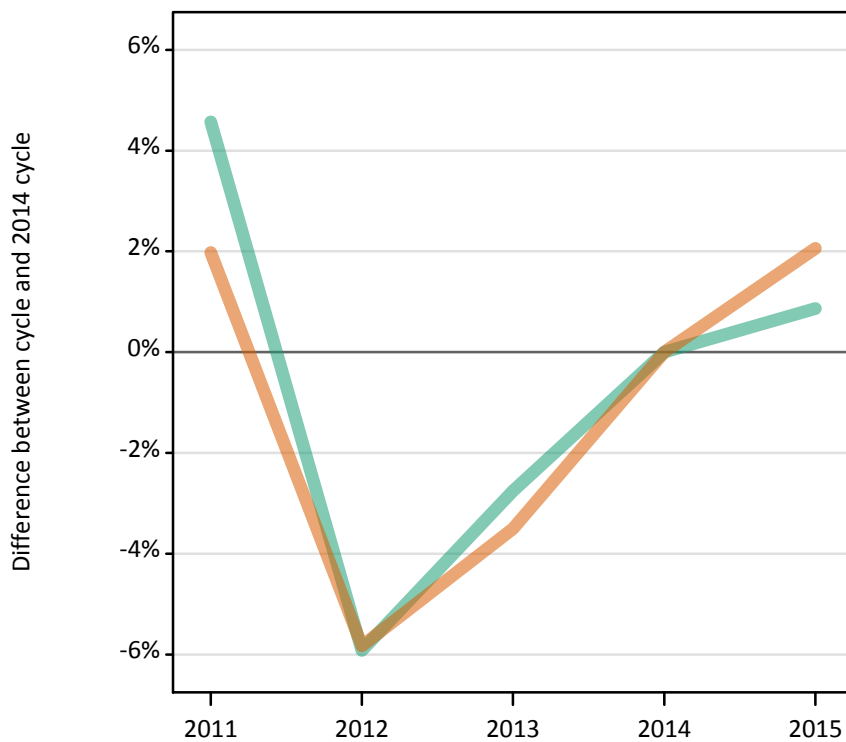
Difference between cycle and 2014 cycle

Age group and sex of applicant		2011	2012	2013	2014	2015
Under 18	Women	-18%	-18%	-13%	0%	3%
	Men	-22%	-17%	-9%	0%	7%
18	Women	-3%	-5%	-3%	0%	6%
	Men	-1%	-5%	-3%	0%	3%
19	Women	1%	-13%	-4%	0%	1%
	Men	5%	-11%	-2%	0%	2%
20-24	Women	0%	-9%	-6%	0%	-2%
	Men	8%	-6%	-3%	0%	-3%
25-29	Women	3%	-7%	-5%	0%	2%
	Men	12%	-5%	-1%	0%	-0%
30-34	Women	6%	-2%	-4%	0%	-2%
	Men	19%	3%	-2%	0%	-3%
35 and over	Women	10%	-2%	-8%	0%	-3%
	Men	11%	0%	-8%	0%	0%
All ages	Women	-1%	-7%	-4%	0%	3%
	Men	2%	-6%	-3%	0%	1%

### D.2.5 Applicants by sex : UK

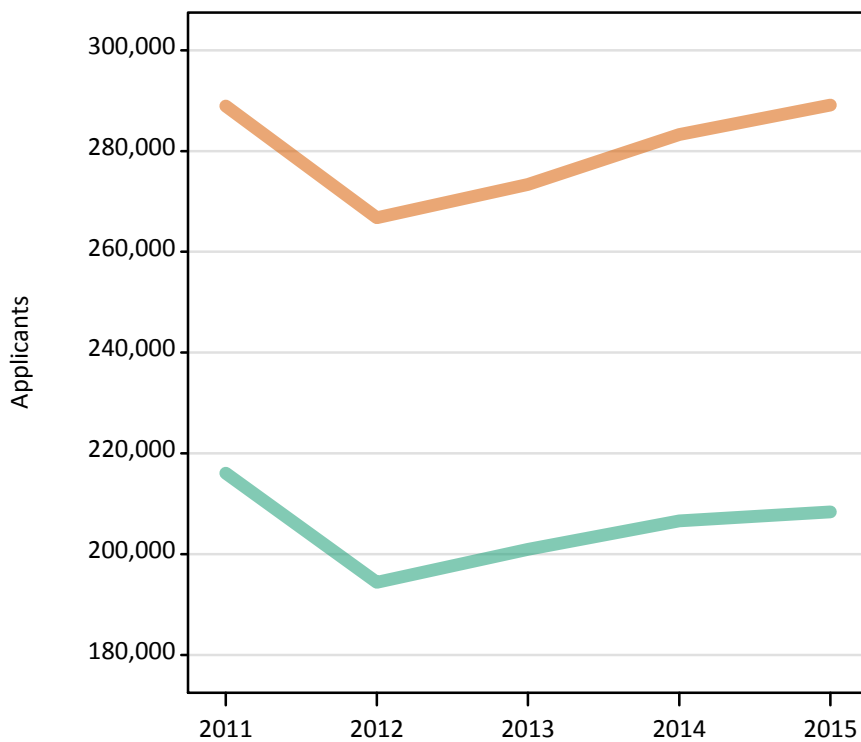
Difference between cycle and 2014 cycle

Men  
Women



### D.2.6 Applicants by sex : UK

Men  
Women



## D.2.7 Applicants by age and sex : UK

Age group and sex of applicant		2011	2012	2013	2014	2015
Under 18	Women	1,230	1,000	870	920	950
	Men	820	700	650	650	700
18	Women	145,910	141,980	142,710	146,380	153,720
	Men	116,330	110,620	111,990	115,040	117,370
19	Women	53,500	44,230	49,230	50,700	51,000
	Men	45,210	37,000	41,580	42,280	42,710
20-24	Women	47,870	43,110	44,580	47,130	45,710
	Men	36,140	30,790	31,750	32,960	32,040
25-29	Women	15,980	14,460	14,830	15,650	15,840
	Men	7,870	6,700	6,980	7,200	7,170
30-34	Women	9,500	8,750	8,650	9,020	8,810
	Men	4,070	3,520	3,330	3,430	3,320
35 and over	Women	14,920	13,260	12,500	13,540	13,120
	Men	5,630	5,070	4,650	5,080	5,120
All ages	Women	288,910	266,790	273,380	283,310	289,140
	Men	216,070	194,390	200,930	206,630	208,410

## D.2.8 Applicants by age and sex : UK

Difference between cycle and 2014 cycle

Age group and sex of applicant		2011	2012	2013	2014	2015
Under 18	Women	34%	9%	-5%	0%	4%
	Men	27%	8%	1%	0%	8%
18	Women	-0%	-3%	-3%	0%	5%
	Men	1%	-4%	-3%	0%	2%
19	Women	6%	-13%	-3%	0%	1%
	Men	7%	-12%	-2%	0%	1%
20-24	Women	2%	-9%	-5%	0%	-3%
	Men	10%	-7%	-4%	0%	-3%
25-29	Women	2%	-8%	-5%	0%	1%
	Men	9%	-7%	-3%	0%	-0%
30-34	Women	5%	-3%	-4%	0%	-2%
	Men	19%	2%	-3%	0%	-3%
35 and over	Women	10%	-2%	-8%	0%	-3%
	Men	11%	-0%	-8%	0%	1%
All ages	Women	2%	-6%	-4%	0%	2%
	Men	5%	-6%	-3%	0%	1%

### D.2.9 Applicants by sex : England

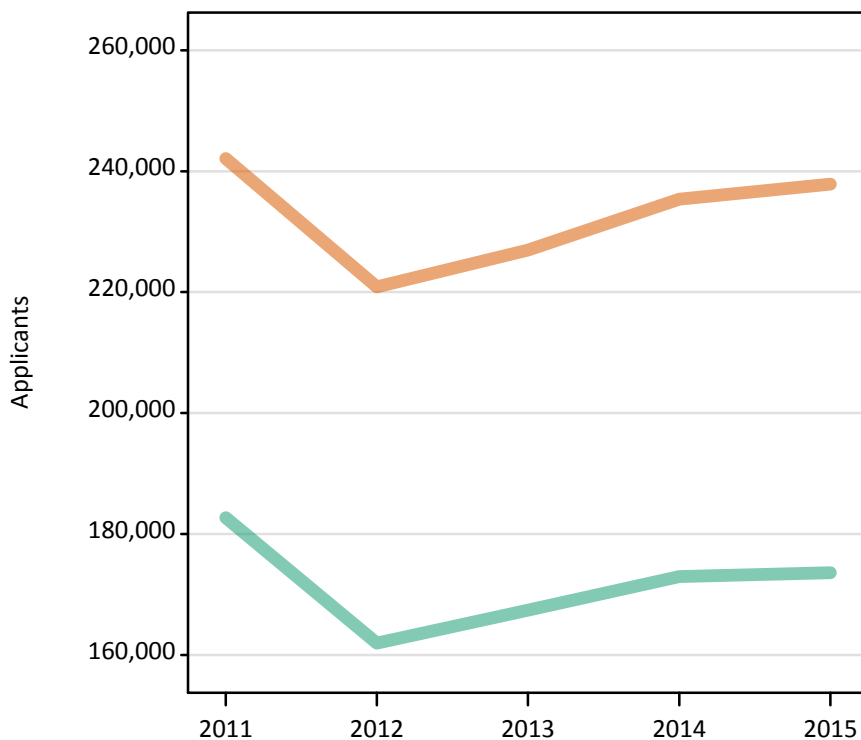
Difference between cycle and 2014 cycle

Men  
Women



### D.2.10 Applicants by sex : England

Men  
Women



### D.2.11 Applicants by age and sex : England

Age group and sex of applicant		2011	2012	2013	2014	2015
Under 18	Women	640	480	440	490	470
	Men	440	370	360	380	430
18	Women	121,800	117,840	119,000	122,250	128,660
	Men	98,030	92,950	94,190	97,170	99,400
19	Women	46,690	37,610	42,490	43,830	44,110
	Men	40,050	32,000	36,470	37,070	37,360
20-24	Women	39,050	34,500	35,310	37,440	35,150
	Men	29,860	24,380	24,610	25,920	24,700
25-29	Women	13,150	11,770	11,960	12,490	11,950
	Men	6,150	5,190	5,340	5,510	5,160
30-34	Women	8,000	7,370	7,170	7,420	6,870
	Men	3,350	2,790	2,600	2,700	2,460
35 and over	Women	12,790	11,330	10,580	11,440	10,620
	Men	4,800	4,270	3,830	4,210	4,070
All ages	Women	242,120	220,890	226,950	235,350	237,840
	Men	182,680	161,950	167,380	172,950	173,580

### D.2.12 Applicants by age and sex : England

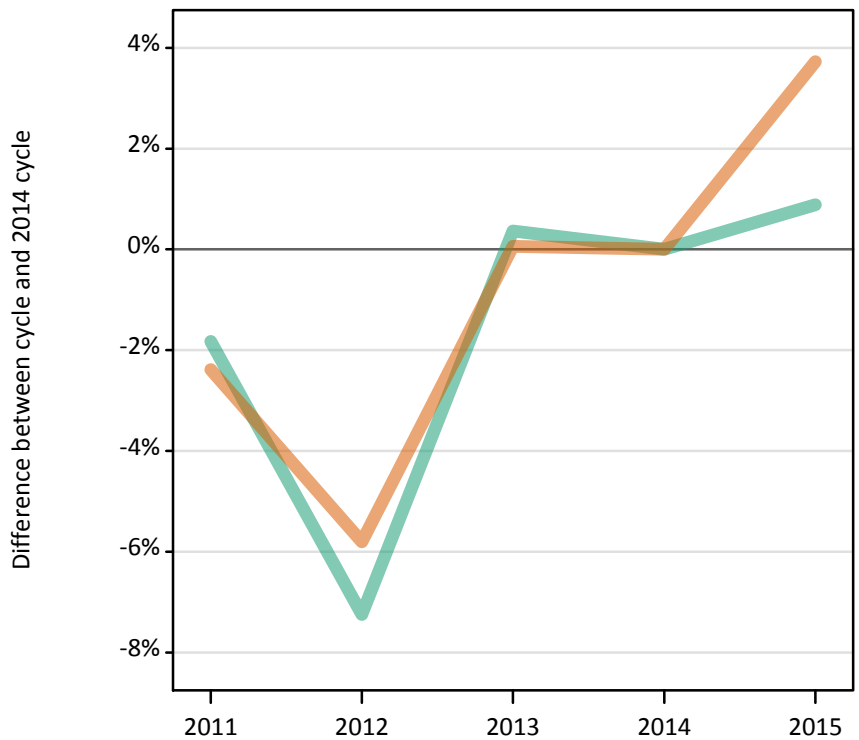
Difference between cycle and 2014 cycle

Age group and sex of applicant		2011	2012	2013	2014	2015
Under 18	Women	33%	-2%	-9%	0%	-3%
	Men	16%	-2%	-5%	0%	14%
18	Women	-0%	-4%	-3%	0%	5%
	Men	1%	-4%	-3%	0%	2%
19	Women	7%	-14%	-3%	0%	1%
	Men	8%	-14%	-2%	0%	1%
20-24	Women	4%	-8%	-6%	0%	-6%
	Men	15%	-6%	-5%	0%	-5%
25-29	Women	5%	-6%	-4%	0%	-4%
	Men	12%	-6%	-3%	0%	-6%
30-34	Women	8%	-1%	-3%	0%	-7%
	Men	24%	3%	-4%	0%	-9%
35 and over	Women	12%	-1%	-8%	0%	-7%
	Men	14%	1%	-9%	0%	-3%
All ages	Women	3%	-6%	-4%	0%	1%
	Men	6%	-6%	-3%	0%	0%

### D.2.13 Applicants by sex : Northern Ireland

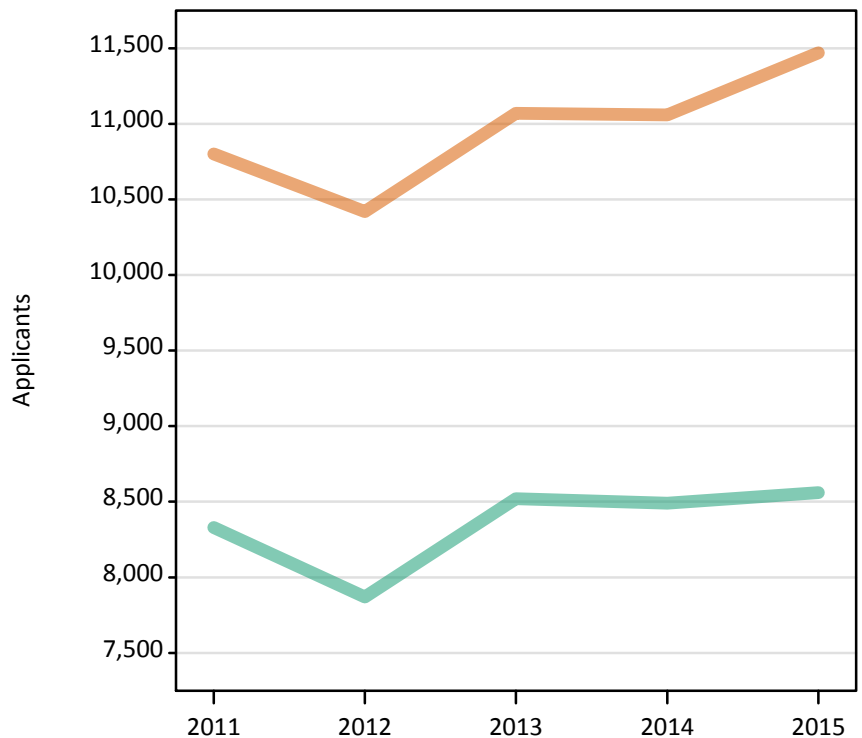
Difference between cycle and 2014 cycle

Men  
Women



### D.2.14 Applicants by sex : Northern Ireland

Men  
Women



### D.2.15 Applicants by age and sex : Northern Ireland

Age group and sex of applicant		2011	2012	2013	2014	2015
Under 18	Women	30	30	20	20	20
	Men	20	20	20	10	10
18	Women	6,710	6,680	6,520	6,390	6,820
	Men	5,180	4,970	5,150	5,070	5,110
19	Women	1,610	1,420	1,610	1,620	1,610
	Men	1,290	1,130	1,260	1,340	1,390
20-24	Women	1,610	1,550	1,860	1,950	1,930
	Men	1,360	1,340	1,620	1,620	1,550
25-29	Women	440	380	530	550	540
	Men	290	230	280	240	270
30-34	Women	170	160	250	250	260
	Men	90	90	100	100	120
35 and over	Women	240	190	290	290	290
	Men	100	100	110	110	110
All ages	Women	10,800	10,420	11,070	11,060	11,470
	Men	8,330	7,870	8,520	8,490	8,560

### D.2.16 Applicants by age and sex : Northern Ireland

Difference between cycle and 2014 cycle

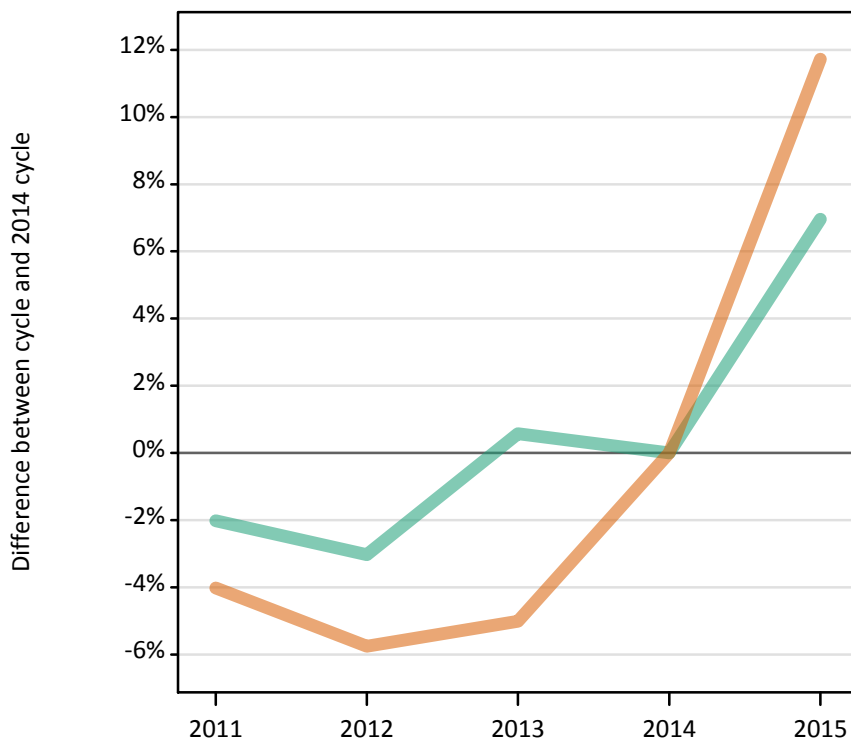
Age group and sex of applicant		2011	2012	2013	2014	2015
Under 18	Women	47%	100%	6%	0%	35%
	Men	130%	60%	60%	0%	20%
18	Women	5%	5%	2%	0%	7%
	Men	2%	-2%	2%	0%	1%
19	Women	-0%	-12%	-1%	0%	-0%
	Men	-4%	-16%	-6%	0%	4%
20-24	Women	-17%	-20%	-5%	0%	-1%
	Men	-16%	-18%	-0%	0%	-5%
25-29	Women	-21%	-32%	-4%	0%	-3%
	Men	20%	-5%	14%	0%	11%
30-34	Women	-34%	-36%	-2%	0%	3%
	Men	-4%	-1%	1%	0%	29%
35 and over	Women	-18%	-34%	-1%	0%	-0%
	Men	-8%	-9%	-3%	0%	3%
All ages	Women	-2%	-6%	0%	0%	4%
	Men	-2%	-7%	0%	0%	1%



### D.2.17 Applicants by sex : Scotland

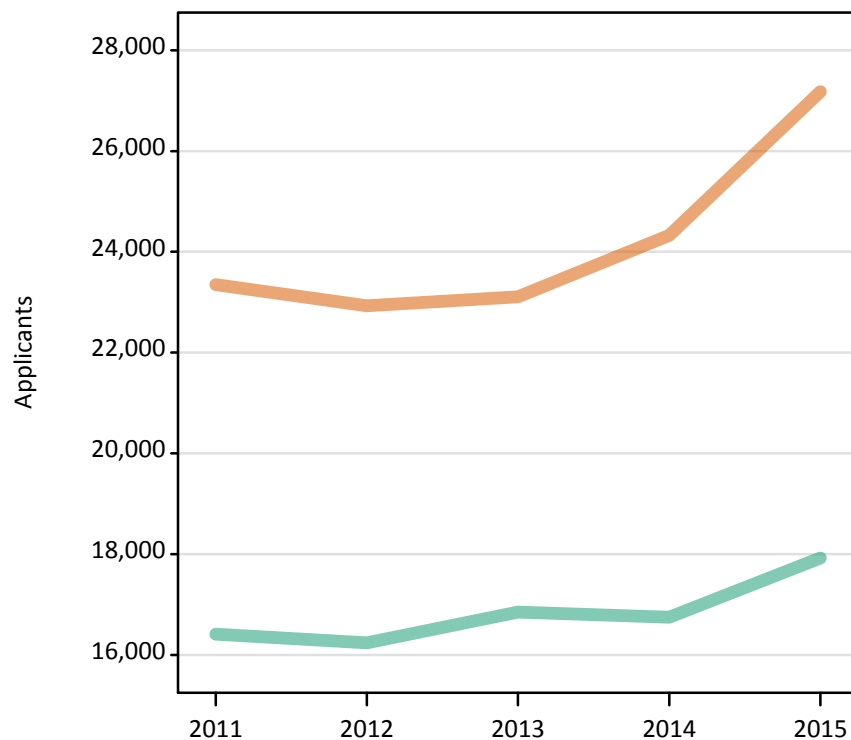
Difference between cycle and 2014 cycle

Men  
Women



### D.2.18 Applicants by sex : Scotland

Men  
Women



### D.2.19 Applicants by age and sex : Scotland

Age group and sex of applicant		2011	2012	2013	2014	2015
Under 18	Women	530	480	390	400	440
	Men	340	300	270	250	250
18	Women	10,920	10,940	10,870	11,270	11,400
	Men	8,240	8,010	8,060	7,990	8,050
19	Women	3,060	3,110	3,040	3,060	3,170
	Men	2,160	2,230	2,210	2,210	2,280
20-24	Women	5,090	4,960	5,370	5,660	6,630
	Men	3,560	3,690	4,200	4,080	4,490
25-29	Women	1,580	1,540	1,540	1,760	2,570
	Men	1,090	1,000	1,050	1,130	1,430
30-34	Women	900	780	810	900	1,270
	Men	490	480	510	510	620
35 and over	Women	1,270	1,130	1,090	1,270	1,700
	Men	540	550	550	590	790
All ages	Women	23,350	22,930	23,110	24,330	27,180
	Men	16,410	16,240	16,850	16,750	17,920

### D.2.20 Applicants by age and sex : Scotland

Difference between cycle and 2014 cycle

Age group and sex of applicant		2011	2012	2013	2014	2015
Under 18	Women	33%	20%	-3%	0%	11%
	Men	39%	21%	9%	0%	3%
18	Women	-3%	-3%	-4%	0%	1%
	Men	3%	0%	1%	0%	1%
19	Women	-0%	1%	-1%	0%	3%
	Men	-2%	1%	0%	0%	3%
20-24	Women	-10%	-12%	-5%	0%	17%
	Men	-13%	-10%	3%	0%	10%
25-29	Women	-10%	-13%	-13%	0%	46%
	Men	-4%	-12%	-7%	0%	27%
30-34	Women	-0%	-14%	-11%	0%	40%
	Men	-4%	-5%	0%	0%	22%
35 and over	Women	0%	-11%	-14%	0%	34%
	Men	-9%	-6%	-6%	0%	34%
All ages	Women	-4%	-6%	-5%	0%	12%
	Men	-2%	-3%	1%	0%	7%

### D.2.21 Applicants by sex : Wales

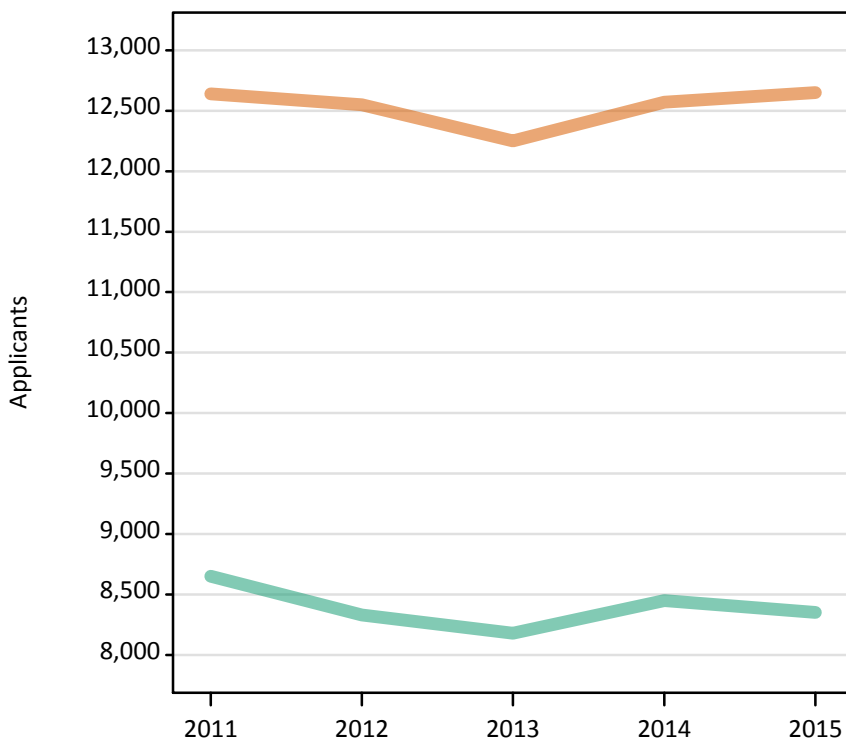
Difference between cycle and 2014 cycle

Men  
Women



### D.2.22 Applicants by sex : Wales

Men  
Women



### D.2.23 Applicants by age and sex : Wales

Age group and sex of applicant		2011	2012	2013	2014	2015
Under 18	Women	30	10	20	20	20
	Men	20	20	10	10	0
18	Women	6,490	6,510	6,320	6,470	6,840
	Men	4,880	4,700	4,590	4,820	4,810
19	Women	2,150	2,100	2,100	2,180	2,110
	Men	1,700	1,650	1,640	1,670	1,680
20-24	Women	2,120	2,100	2,050	2,080	1,990
	Men	1,370	1,390	1,330	1,330	1,290
25-29	Women	820	770	810	850	780
	Men	340	280	310	320	310
30-34	Women	430	450	420	440	410
	Men	140	150	130	130	110
35 and over	Women	610	600	540	530	510
	Men	200	150	170	170	160
All ages	Women	12,640	12,550	12,250	12,570	12,650
	Men	8,650	8,330	8,180	8,450	8,350

### D.2.24 Applicants by age and sex : Wales

Difference between cycle and 2014 cycle

Age group and sex of applicant		2011	2012	2013	2014	2015
Under 18	Women	93%	-27%	60%	0%	20%
	Men	33%	25%	0%	0%	-83%
18	Women	0%	1%	-2%	0%	6%
	Men	1%	-2%	-5%	0%	-0%
19	Women	-2%	-4%	-4%	0%	-4%
	Men	2%	-1%	-1%	0%	1%
20-24	Women	2%	1%	-2%	0%	-4%
	Men	3%	4%	-0%	0%	-3%
25-29	Women	-3%	-9%	-4%	0%	-8%
	Men	5%	-11%	-2%	0%	-4%
30-34	Women	-3%	1%	-5%	0%	-8%
	Men	13%	18%	0%	0%	-16%
35 and over	Women	16%	14%	2%	0%	-4%
	Men	16%	-12%	-3%	0%	-10%
All ages	Women	1%	-0%	-2%	0%	1%
	Men	2%	-1%	-3%	0%	-1%

### D.2.25 Applicants by sex : EU (excluding UK)

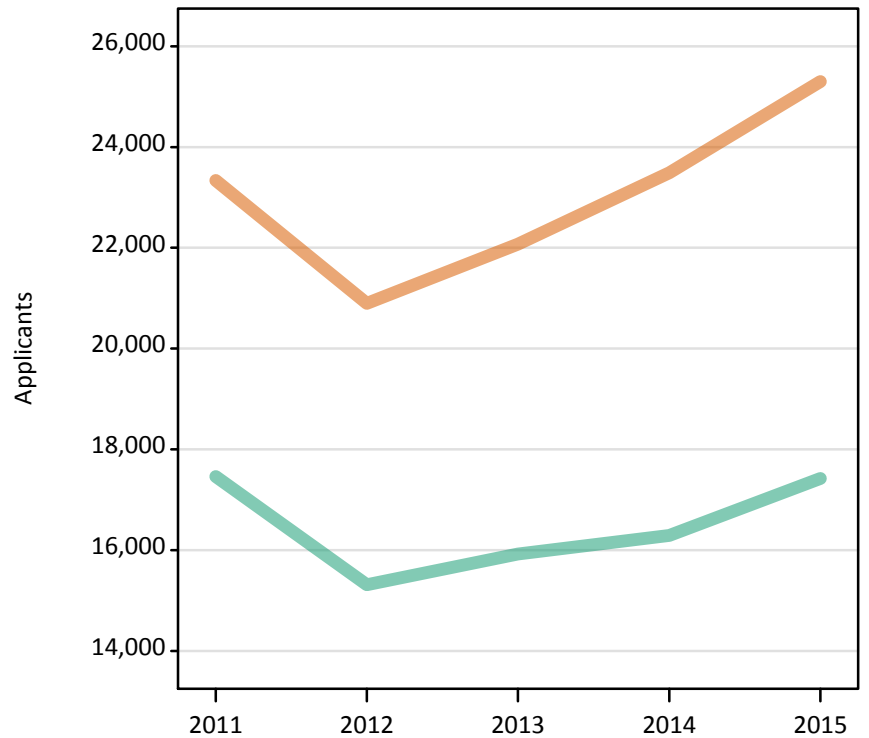
Difference between cycle and 2014 cycle

Men  
Women



### D.2.26 Applicants by sex : EU (excluding UK)

Men  
Women



### D.2.27 Applicants by age and sex : EU (excluding UK)

Age group and sex of applicant		2011	2012	2013	2014	2015
Under 18	Women	1,780	1,740	1,800	2,040	2,270
	Men	1,060	1,000	1,140	1,190	1,430
18	Women	7,790	7,390	7,810	8,400	9,340
	Men	5,000	5,000	5,180	5,580	6,230
19	Women	6,960	6,290	6,720	7,180	7,590
	Men	5,480	4,690	4,950	4,870	5,240
20-24	Women	5,790	4,650	4,930	5,050	5,210
	Men	4,990	3,930	3,960	4,050	3,860
25-29	Women	730	550	590	570	620
	Men	640	450	440	410	470
30-34	Women	170	160	140	130	140
	Men	170	140	140	100	110
35 and over	Women	110	110	90	120	120
	Men	120	100	120	90	80
All ages	Women	23,340	20,900	22,070	23,490	25,300
	Men	17,460	15,310	15,920	16,290	17,420

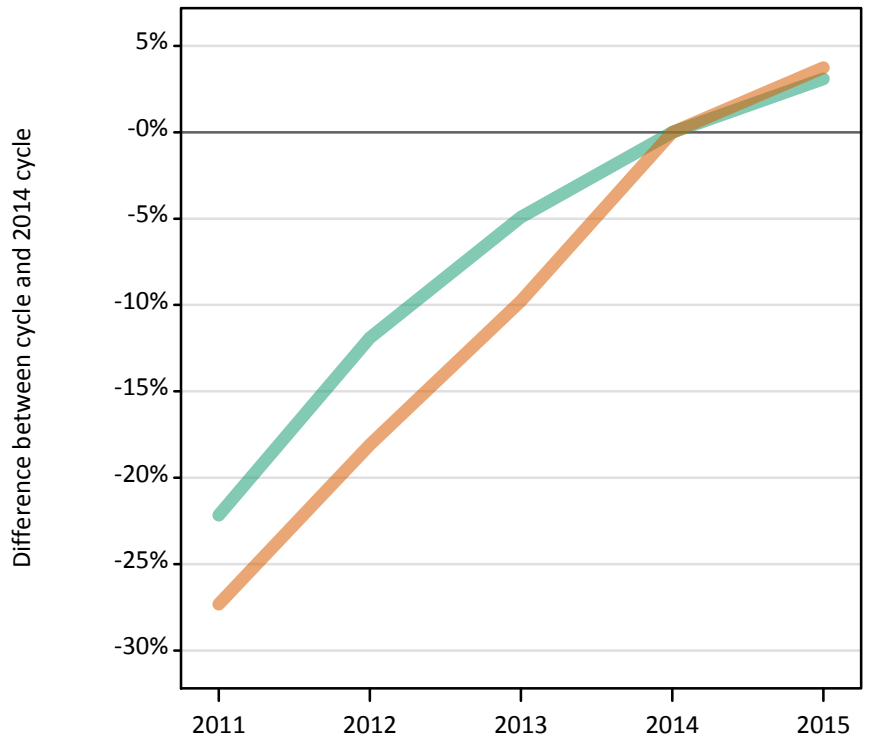
### D.2.28 Applicants by age and sex : EU (excluding UK)

Difference between cycle and 2014 cycle

Age group and sex of applicant		2011	2012	2013	2014	2015
Under 18	Women	-12%	-14%	-12%	0%	11%
	Men	-11%	-16%	-5%	0%	20%
18	Women	-7%	-12%	-7%	0%	11%
	Men	-10%	-10%	-7%	0%	12%
19	Women	-3%	-12%	-6%	0%	6%
	Men	13%	-4%	2%	0%	8%
20-24	Women	15%	-8%	-2%	0%	3%
	Men	23%	-3%	-2%	0%	-5%
25-29	Women	27%	-4%	3%	0%	9%
	Men	57%	10%	7%	0%	15%
30-34	Women	37%	22%	6%	0%	13%
	Men	65%	34%	31%	0%	6%
35 and over	Women	-14%	-8%	-25%	0%	-2%
	Men	22%	11%	26%	0%	-16%
All ages	Women	-1%	-11%	-6%	0%	8%
	Men	7%	-6%	-2%	0%	7%

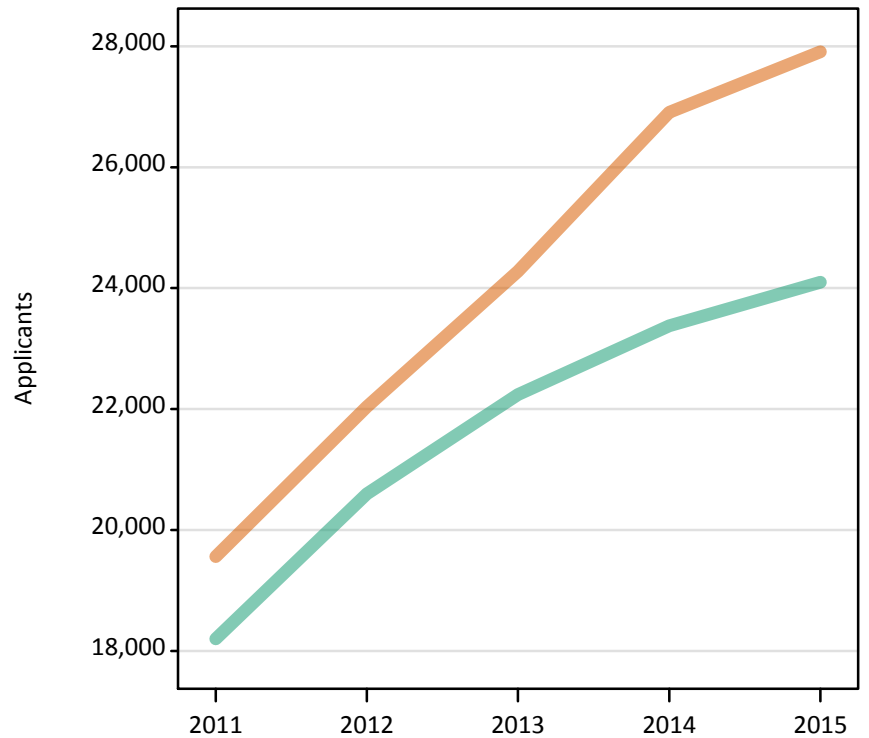
**D.2.29 Applicants by sex : Not EU**  
Difference between cycle and 2014 cycle

Men  
Women



**D.2.30 Applicants by sex : Not EU**

Men  
Women



### D.2.31 Applicants by age and sex : Not EU

Age group and sex of applicant		2011	2012	2013	2014	2015
Under 18	Women	1,460	1,760	2,090	2,520	2,390
	Men	1,220	1,600	1,840	2,130	2,110
18	Women	7,090	8,160	9,560	10,530	11,380
	Men	6,150	7,090	8,040	8,690	9,420
19	Women	5,430	6,130	6,510	7,160	7,320
	Men	4,820	5,320	5,550	5,860	6,010
20-24	Women	4,620	5,130	5,280	5,830	5,800
	Men	4,940	5,530	5,780	5,730	5,640
25-29	Women	620	550	550	570	690
	Men	710	700	690	620	590
30-34	Women	190	180	170	170	170
	Men	230	210	200	210	200
35 and over	Women	150	130	120	130	150
	Men	150	160	130	140	130
All ages	Women	19,560	22,040	24,280	26,910	27,910
	Men	18,200	20,600	22,240	23,380	24,100

### D.2.32 Applicants by age and sex : Not EU

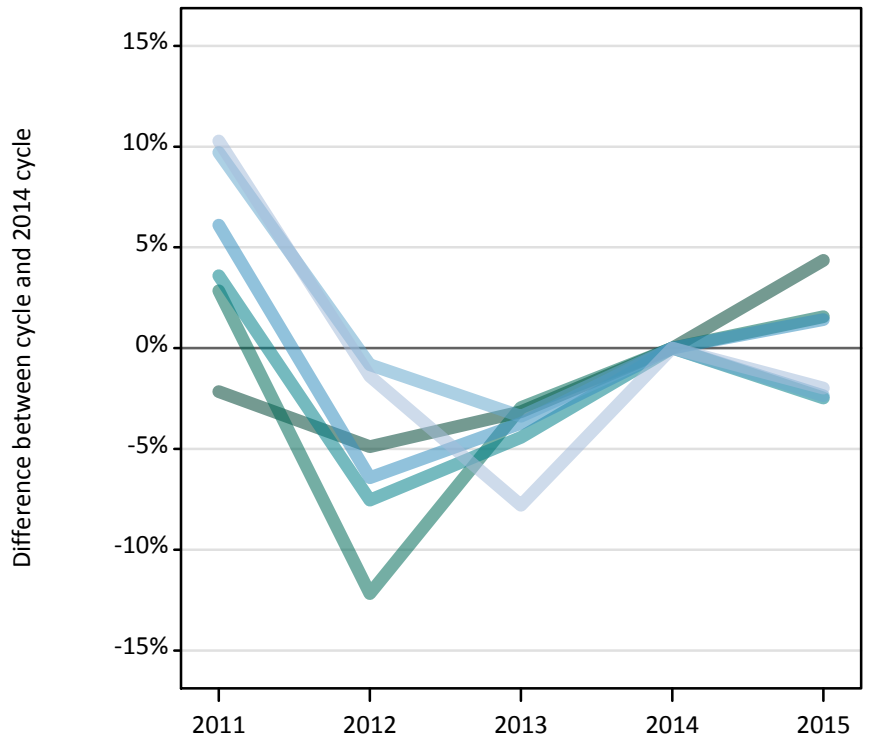
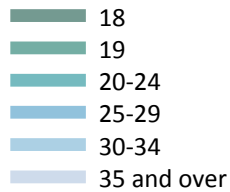
Difference between cycle and 2014 cycle

Age group and sex of applicant		2011	2012	2013	2014	2015
Under 18	Women	-42%	-30%	-17%	0%	-5%
	Men	-43%	-25%	-14%	0%	-1%
18	Women	-33%	-23%	-9%	0%	8%
	Men	-29%	-18%	-7%	0%	8%
19	Women	-24%	-14%	-9%	0%	2%
	Men	-18%	-9%	-5%	0%	3%
20-24	Women	-21%	-12%	-9%	0%	-0%
	Men	-14%	-3%	1%	0%	-2%
25-29	Women	8%	-4%	-4%	0%	20%
	Men	14%	12%	12%	0%	-5%
30-34	Women	14%	7%	-1%	0%	3%
	Men	6%	-1%	-6%	0%	-5%
35 and over	Women	12%	2%	-10%	0%	18%
	Men	3%	9%	-10%	0%	-6%
All ages	Women	-27%	-18%	-10%	0%	4%
	Men	-22%	-12%	-5%	0%	3%



### D.2.33 Applicants by domicile and age : All domiciles

Difference between cycle and 2014 cycle



### D.2.34 Applicants by domicile and age : All domiciles

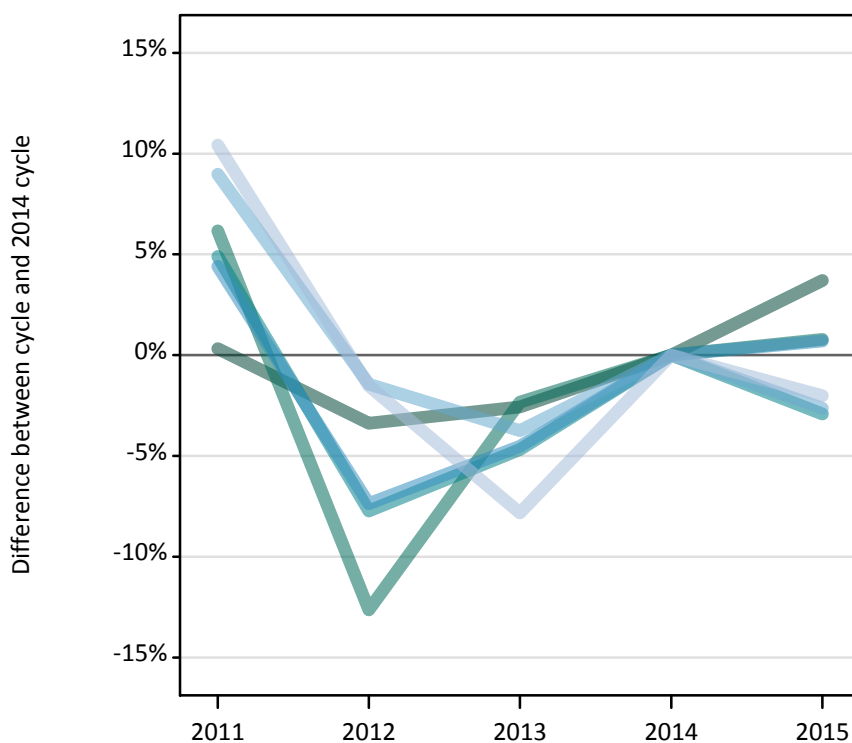
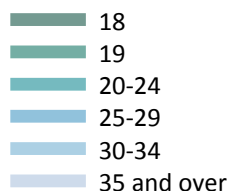
Domicile and age group		2011	2012	2013	2014	2015
All domiciles	Under 18	7,570	7,810	8,390	9,440	9,850
	18	288,260	280,230	285,290	294,610	307,460
	19	121,390	103,650	114,540	118,030	119,870
	20-24	104,360	93,140	96,280	100,740	98,250
	25-29	26,540	23,410	24,080	25,020	25,370
	30-34	14,330	12,960	12,620	13,060	12,750
	35 and over	21,070	18,840	17,610	19,100	18,730

### D.2.35 Applicants by domicile and age : All domiciles

Difference between cycle and 2014 cycle

Domicile and age group		2011	2012	2013	2014	2015
All domiciles	Under 18	-20%	-17%	-11%	0%	4%
	18	-2%	-5%	-3%	0%	4%
	19	3%	-12%	-3%	0%	2%
	20-24	4%	-8%	-4%	0%	-2%
	25-29	6%	-6%	-4%	0%	1%
	30-34	10%	-1%	-3%	0%	-2%
	35 and over	10%	-1%	-8%	0%	-2%

**D.2.36 Applicants by domicile and age : UK**  
Difference between cycle and 2014 cycle



**D.2.37 Applicants by domicile and age : UK**

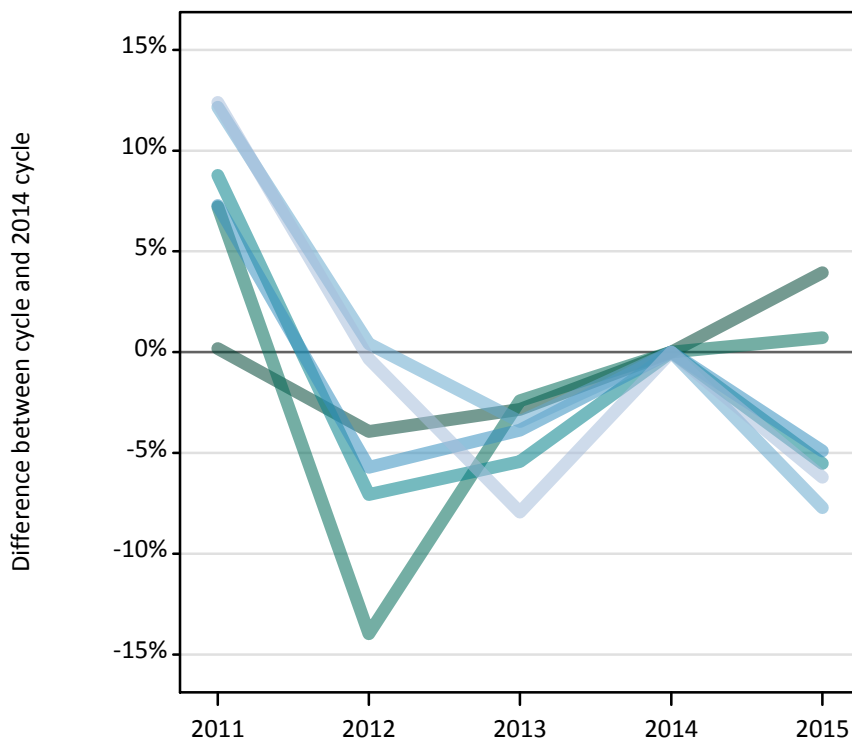
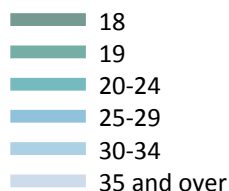
Domicile and age group		2011	2012	2013	2014	2015
UK	Under 18	2,050	1,700	1,530	1,560	1,650
	18	262,250	252,600	254,700	261,420	271,090
	19	98,700	81,220	90,810	92,970	93,700
	20-24	84,010	73,890	76,330	80,080	77,740
	25-29	23,850	21,160	21,810	22,840	23,000
	30-34	13,570	12,270	11,980	12,450	12,120
	35 and over	20,550	18,330	17,160	18,610	18,240

**D.2.38 Applicants by domicile and age : UK**  
Difference between cycle and 2014 cycle

Domicile and age group		2011	2012	2013	2014	2015
UK	Under 18	31%	9%	-2%	0%	6%
	18	0%	-3%	-3%	0%	4%
	19	6%	-13%	-2%	0%	1%
	20-24	5%	-8%	-5%	0%	-3%
	25-29	4%	-7%	-5%	0%	1%
	30-34	9%	-1%	-4%	0%	-3%
	35 and over	10%	-2%	-8%	0%	-2%

### D.2.39 Applicants by domicile and age : England

Difference between cycle and 2014 cycle



### D.2.40 Applicants by domicile and age : England

Domicile and age group		2011	2012	2013	2014	2015
England	Under 18	1,080	850	800	860	900
	18	219,830	210,790	213,190	219,420	228,060
	19	86,740	69,600	78,950	80,900	81,480
	20-24	68,910	58,880	59,910	63,350	59,860
	25-29	19,300	16,960	17,300	17,990	17,110
	30-34	11,350	10,160	9,770	10,120	9,340
	35 and over	17,590	15,600	14,410	15,660	14,680

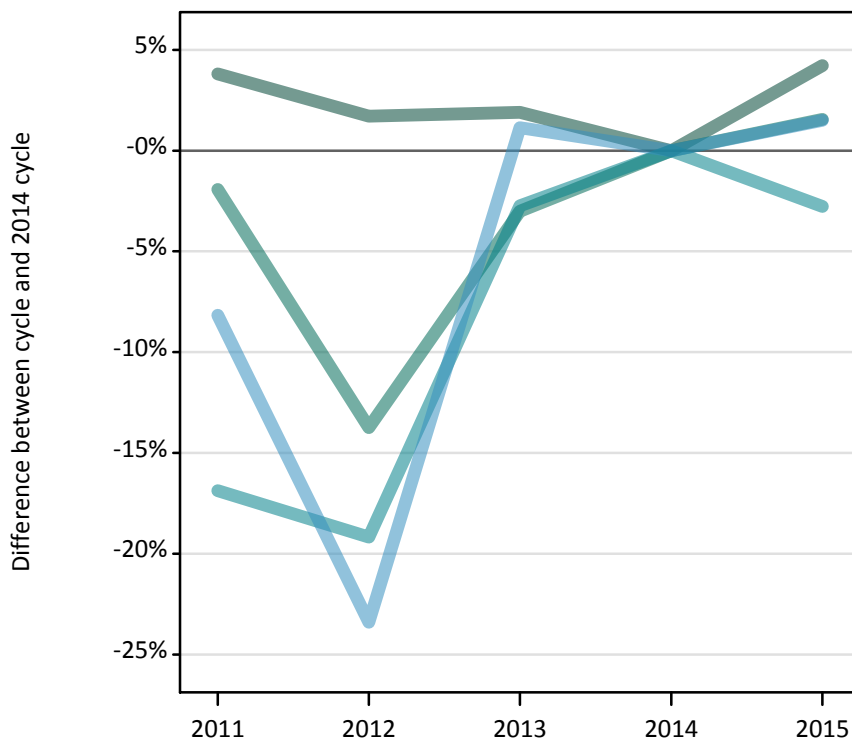
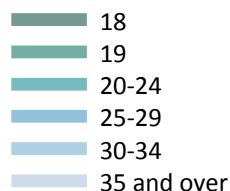
### D.2.41 Applicants by domicile and age : England

Difference between cycle and 2014 cycle

Domicile and age group		2011	2012	2013	2014	2015
England	Under 18	25%	-2%	-7%	0%	4%
	18	0%	-4%	-3%	0%	4%
	19	7%	-14%	-2%	0%	1%
	20-24	9%	-7%	-5%	0%	-6%
	25-29	7%	-6%	-4%	0%	-5%
	30-34	12%	0%	-3%	0%	-8%
	35 and over	12%	-0%	-8%	0%	-6%

### D.2.42 Applicants by domicile and age : Northern Ireland

Difference between cycle and 2014 cycle



### D.2.43 Applicants by domicile and age : Northern Ireland

Domicile and age group		2011	2012	2013	2014	2015
Northern Ireland	Under 18	50	50	30	30	40
	18	11,890	11,650	11,670	11,450	11,940
	19	2,900	2,550	2,870	2,950	3,000
	20-24	2,970	2,890	3,480	3,570	3,470
	25-29	730	610	800	800	810
	30-34	260	260	350	350	380
	35 and over	340	290	390	400	400

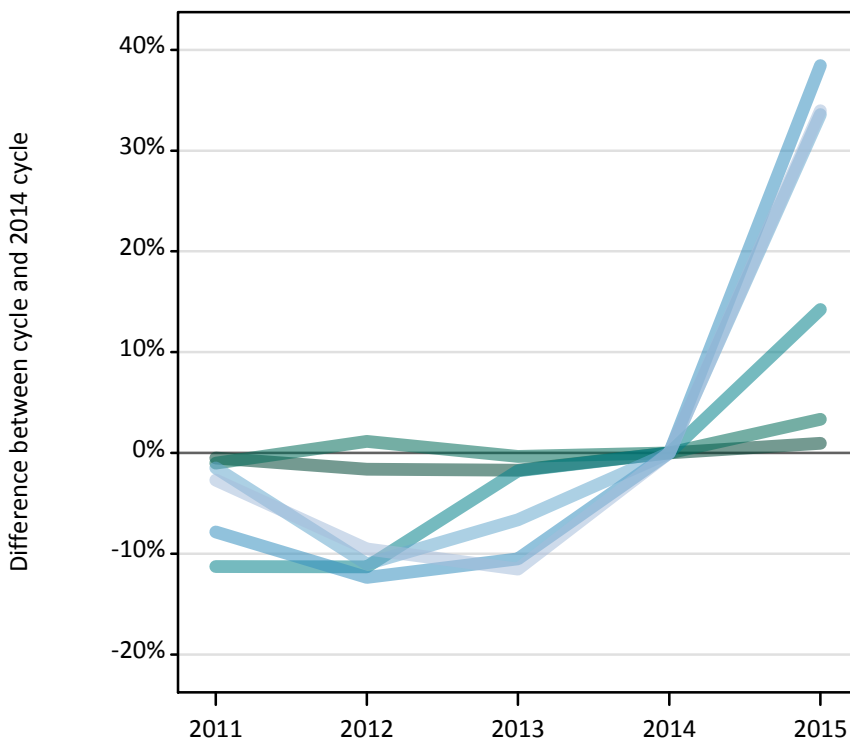
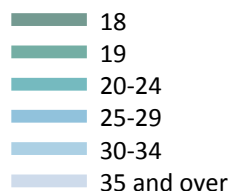
### D.2.44 Applicants by domicile and age : Northern Ireland

Difference between cycle and 2014 cycle

Domicile and age group		2011	2012	2013	2014	2015
Northern Ireland	Under 18	78%	85%	26%	0%	30%
	18	4%	2%	2%	0%	4%
	19	-2%	-14%	-3%	0%	2%
	20-24	-17%	-19%	-3%	0%	-3%
	25-29	-8%	-23%	1%	0%	2%
	30-34	-26%	-26%	-1%	0%	10%
	35 and over	-15%	-27%	-2%	0%	1%

### D.2.45 Applicants by domicile and age : Scotland

Difference between cycle and 2014 cycle



### D.2.46 Applicants by domicile and age : Scotland

Domicile and age group		2011	2012	2013	2014	2015
Scotland	Under 18	870	780	660	650	700
	18	19,160	18,950	18,930	19,260	19,440
	19	5,220	5,330	5,250	5,270	5,450
	20-24	8,640	8,640	9,570	9,740	11,130
	25-29	2,670	2,540	2,590	2,890	4,000
	30-34	1,390	1,260	1,320	1,410	1,890
	35 and over	1,810	1,680	1,640	1,860	2,490

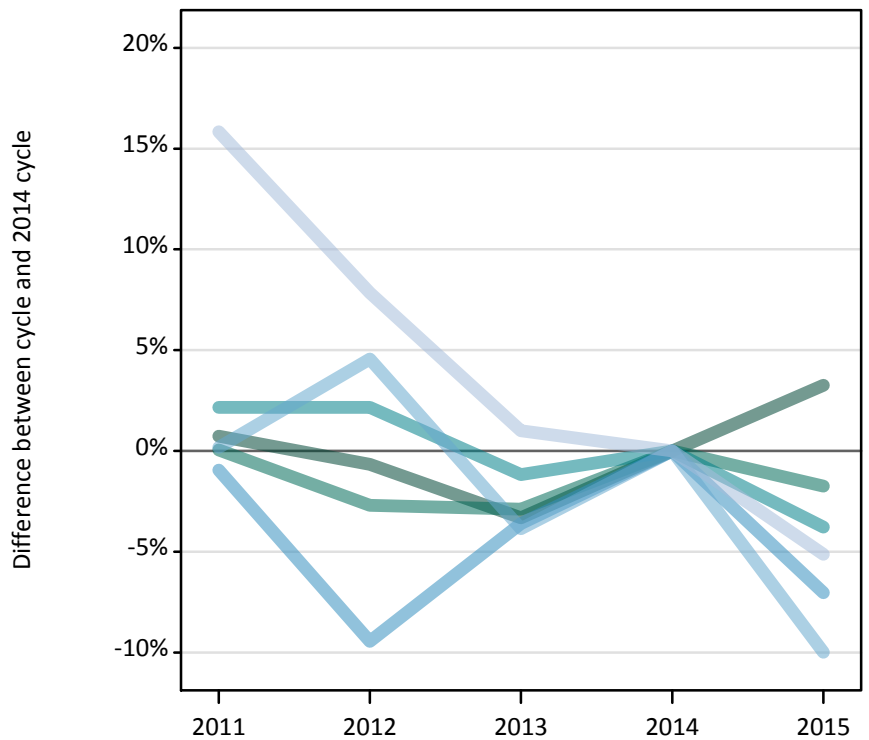
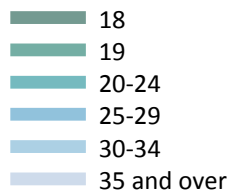
### D.2.47 Applicants by domicile and age : Scotland

Difference between cycle and 2014 cycle

Domicile and age group		2011	2012	2013	2014	2015
Scotland	Under 18	35%	20%	1%	0%	8%
	18	-0%	-2%	-2%	0%	1%
	19	-1%	1%	-0%	0%	3%
	20-24	-11%	-11%	-2%	0%	14%
	25-29	-8%	-12%	-11%	0%	38%
	30-34	-1%	-11%	-7%	0%	34%
	35 and over	-3%	-10%	-12%	0%	34%

### D.2.48 Applicants by domicile and age : Wales

Difference between cycle and 2014 cycle



### D.2.49 Applicants by domicile and age : Wales

Domicile and age group		2011	2012	2013	2014	2015
Wales	Under 18	50	30	40	30	20
	18	11,370	11,210	10,910	11,280	11,650
	19	3,850	3,740	3,740	3,850	3,780
	20-24	3,490	3,490	3,380	3,420	3,290
	25-29	1,150	1,060	1,120	1,170	1,080
	30-34	570	600	550	570	510
	35 and over	810	760	710	700	670

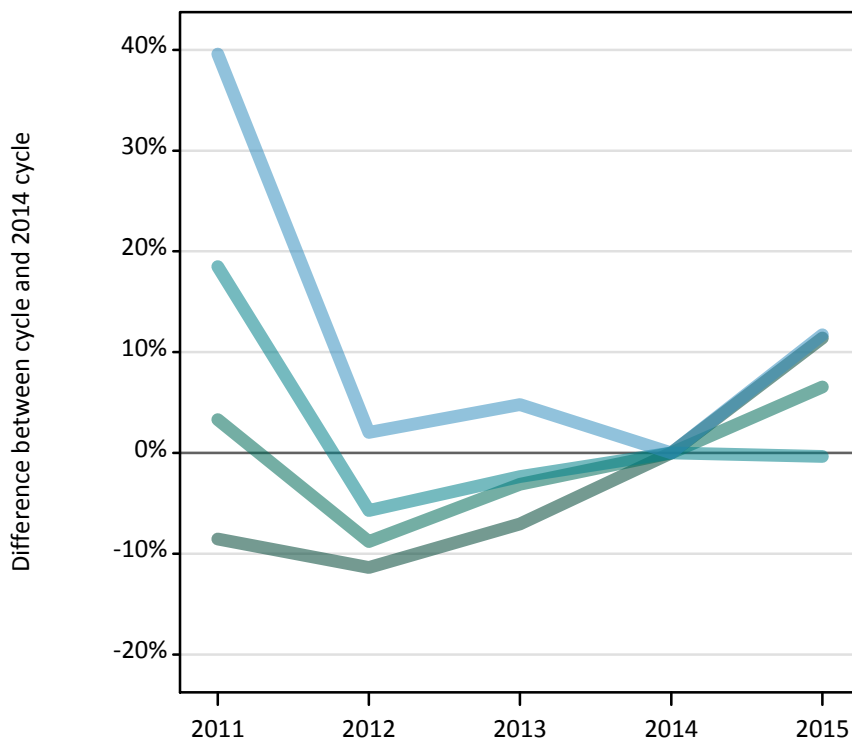
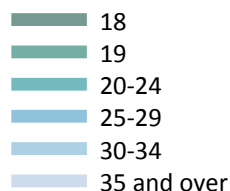
### D.2.50 Applicants by domicile and age : Wales

Difference between cycle and 2014 cycle

Domicile and age group		2011	2012	2013	2014	2015
Wales	Under 18	67%	-4%	33%	0%	-26%
	18	1%	-1%	-3%	0%	3%
	19	0%	-3%	-3%	0%	-2%
	20-24	2%	2%	-1%	0%	-4%
	25-29	-1%	-9%	-4%	0%	-7%
	30-34	0%	5%	-4%	0%	-10%
	35 and over	16%	8%	1%	0%	-5%

### D.2.51 Applicants by domicile and age : EU (excluding UK)

Difference between cycle and 2014 cycle



### D.2.52 Applicants by domicile and age : EU (excluding UK)

Domicile and age group		2011	2012	2013	2014	2015
EU (excluding UK)	Under 18	2,850	2,740	2,930	3,230	3,700
	18	12,780	12,390	12,990	13,980	15,570
	19	12,440	10,980	11,670	12,040	12,830
	20-24	10,790	8,580	8,890	9,100	9,070
	25-29	1,370	1,000	1,030	980	1,100
	30-34	350	290	270	230	250
	35 and over	220	220	210	220	200

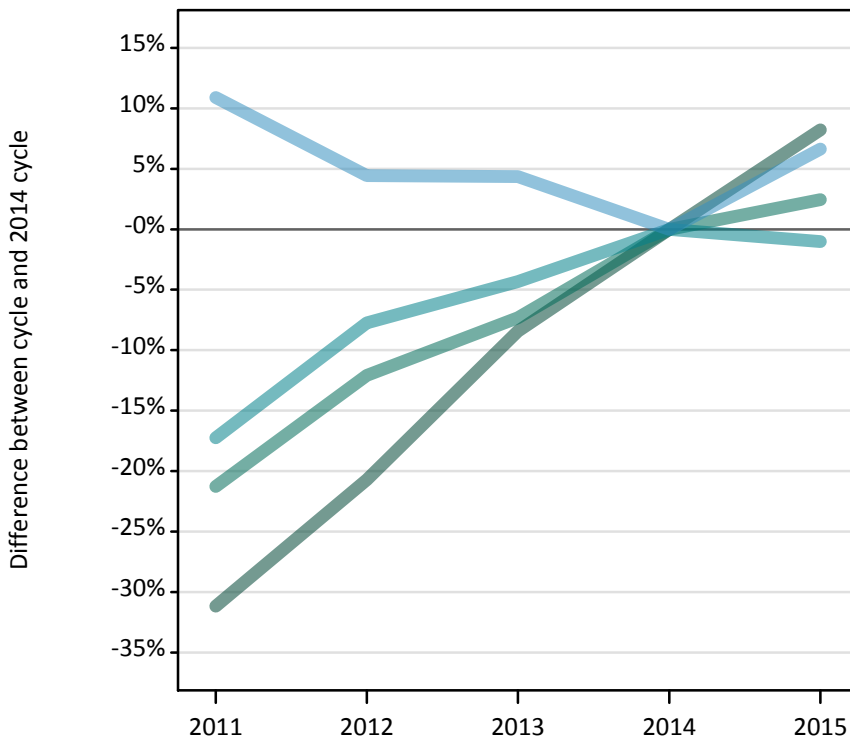
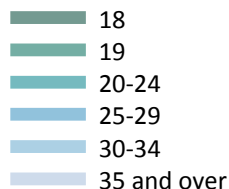
### D.2.53 Applicants by domicile and age : EU (excluding UK)

Difference between cycle and 2014 cycle

Domicile and age group		2011	2012	2013	2014	2015
EU (excluding UK)	Under 18	-12%	-15%	-9%	0%	15%
	18	-9%	-11%	-7%	0%	11%
	19	3%	-9%	-3%	0%	7%
	20-24	18%	-6%	-2%	0%	-0%
	25-29	40%	2%	5%	0%	12%
	30-34	50%	27%	17%	0%	10%
	35 and over	2%	0%	-3%	0%	-8%

### D.2.54 Applicants by domicile and age : Not EU

Difference between cycle and 2014 cycle



### D.2.55 Applicants by domicile and age : Not EU

Domicile and age group		2011	2012	2013	2014	2015
Not EU	Under 18	2,680	3,370	3,930	4,650	4,500
	18	13,230	15,240	17,600	19,220	20,800
	19	10,250	11,440	12,060	13,020	13,340
	20-24	9,560	10,660	11,060	11,560	11,440
	25-29	1,320	1,250	1,250	1,190	1,270
	30-34	420	390	370	380	380
	35 and over	290	290	250	270	290

### D.2.56 Applicants by domicile and age : Not EU

Difference between cycle and 2014 cycle

Domicile and age group		2011	2012	2013	2014	2015
Not EU	Under 18	-42%	-28%	-15%	0%	-3%
	18	-31%	-21%	-8%	0%	8%
	19	-21%	-12%	-7%	0%	2%
	20-24	-17%	-8%	-4%	0%	-1%
	25-29	11%	4%	4%	0%	7%
	30-34	9%	2%	-4%	0%	-1%
	35 and over	7%	5%	-10%	0%	5%



## D.2.57 Technical notes and definitions

Applicants have been able to submit applications for all 2015 courses since early September.

Applicants who submit their applications to UCAS by the January deadline are considered as 'on time' applicants for the large majority of courses offered through UCAS.

In 2015, around 125 courses relating to teacher training that historically would only have been available through UCAS Teacher Training, and therefore not previously counted in the scope of this statistical release, were brought into the undergraduate UCAS scheme. These courses are all offered by providers based in Scotland and are in the JACS3 detailed subject reporting grouping of 'X1'. The large majority of applications to these courses are from applicants living in Scotland.

To help comparisons through time, additional tables are available on the UCAS website that exclude any applications made by applicants to subject group 'X1' at Scottish providers. These tables provide a better 'like for like' comparison particularly when considering Scottish domiciled applicants and Scottish providers.

Counts of the number of applicants reported have been rounded to the nearest 10 applicants, this may result in instances where totals do not equal the sum of the components. Proportional changes have been rounded to the nearest whole percentage point.

### Age

This statistical release uses country-specific age definitions which align with the cut off points for school/college cohorts within the different administrations of the UK. For England and Wales ages are defined on the 31 August, for Northern Ireland on the 1 July and for Scotland on the 28 February the following year. Defining ages in this way matches the assignment of children to school cohorts. For applicants outside of the UK the cohort cut off for England and Wales has been used.

### Applicant

A person who has made an application in the UCAS system during the cycle reported, this includes those who submit applications for deferred entry.

### Application

An application to a course at an institution made by an applicant. Applicants may make up to five applications.

### Country of institution

The UK country of the institution applied to.

### Domicile

Declared area of permanent residence. The Channel Islands and the Isle of Man have been assigned as 'Not EU'.

### First time applicant

An applicant that did not apply to the UCAS scheme in the previous cycle.

### Reapplicant

An applicant that applied to the UCAS scheme in the previous cycle.

### Subject group

The JACS3 classification used to classify courses into subject groups.

### Tariff group of institution

Institutions are grouped as higher, medium or lower tariff based on their average levels of attainment of their accepted applicants (summarised through UCAS Tariff points) in recent cycles. Each group of institutions accounted for around a third of all UK 18 year old acceptances in recent cycles.