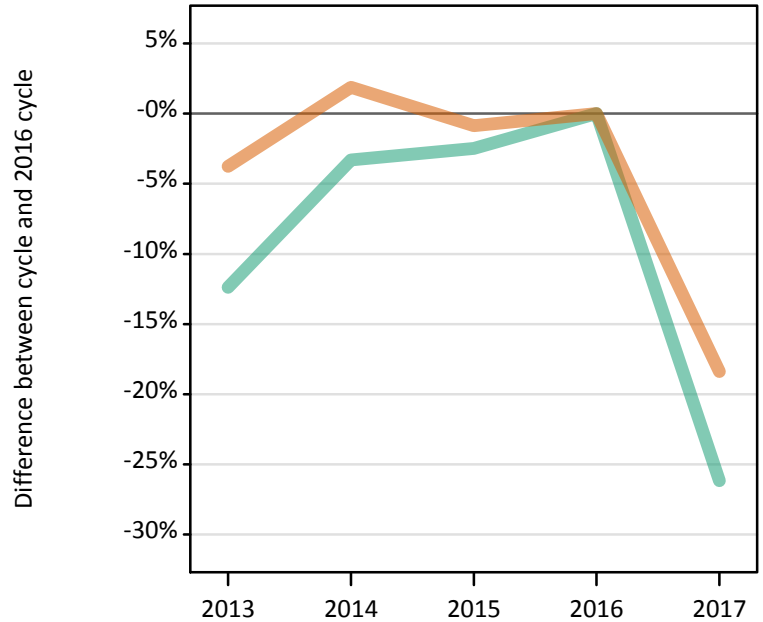


Nursing applicants by sex and age at the 30 June deadline

IB.2.1 Applicants by sex : All domiciles

Difference between cycle and 2016 cycle

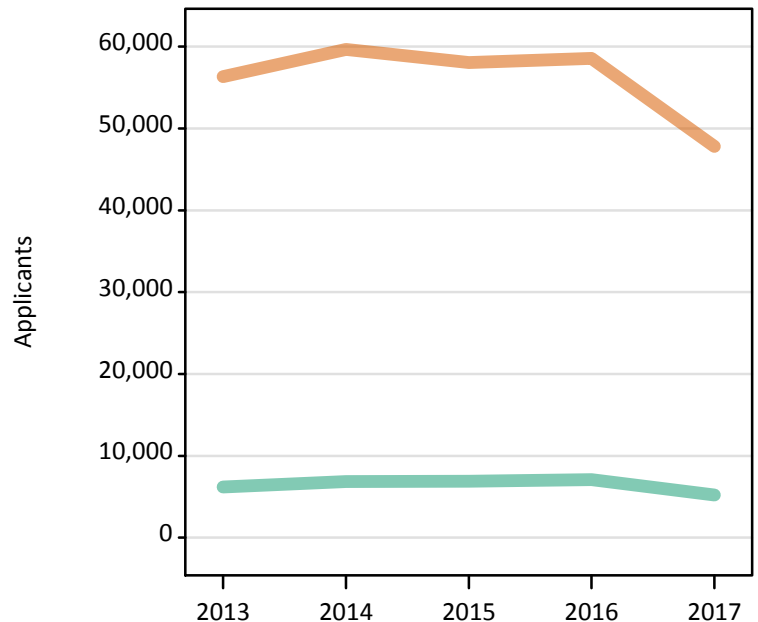
Men
Women



Note: The percentage change is not plotted in the above chart for groups with fewer than 500 applicants in any one cycle.

IB.2.2 Applicants by sex : All domiciles

Men
Women



IB.2.3 Applicants by age and sex : All domiciles

Age group and sex of applicant		2013	2014	2015	2016	2017
Under 18	Women					
	Men					
18	Women	11,770	11,930	12,340	12,090	11,110
	Men	540	580	570	570	500
19	Women	6,810	7,120	6,770	6,910	5,780
	Men	450	480	490	460	380
20-24	Women	15,470	16,570	15,540	14,790	11,910
	Men	1,400	1,560	1,470	1,380	1,020
25-29	Women	8,610	9,320	8,980	9,200	6,860
	Men	1,140	1,170	1,140	1,140	820
30-34	Women	5,580	5,810	5,530	5,860	4,500
	Men	880	910	890	970	620
35 and over	Women	7,970	8,740	8,770	9,570	7,510
	Men	1,780	2,130	2,320	2,550	1,870
All ages	Women	56,350	59,650	58,060	58,550	47,790
	Men	6,190	6,840	6,900	7,070	5,220

IB.2.4 Applicants by age and sex : All domiciles

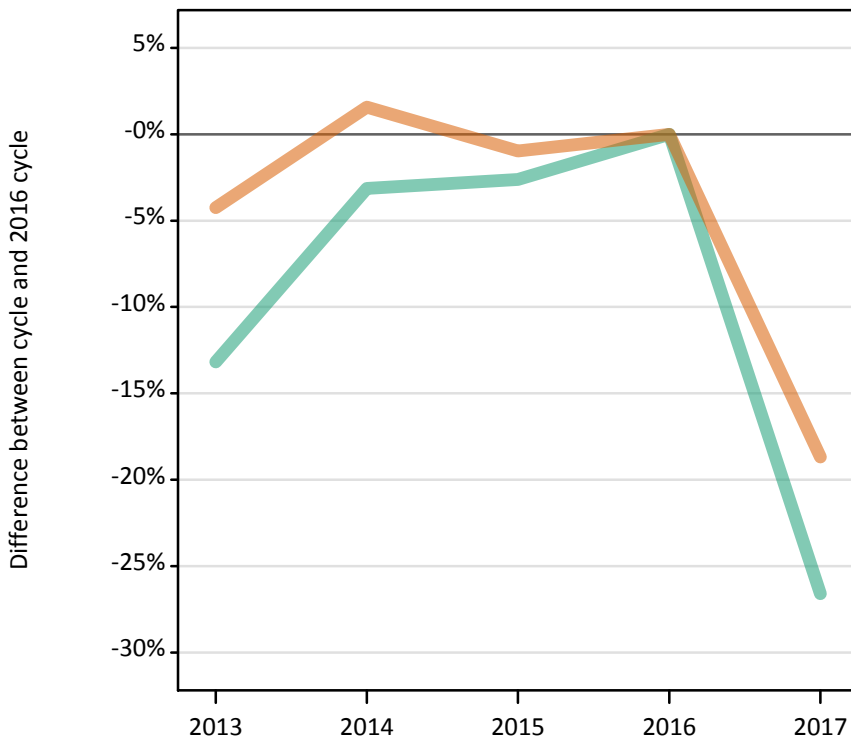
Difference between cycle and 2016 cycle

Age group and sex of applicant		2013	2014	2015	2016	2017
Under 18	Women					
	Men					
18	Women	-3%	-1%	2%	0%	-8%
	Men	-6%	1%	-0%	0%	-12%
19	Women	-1%	3%	-2%	0%	-16%
	Men	-1%	4%	7%	0%	-17%
20-24	Women	5%	12%	5%	0%	-20%
	Men	1%	13%	6%	0%	-26%
25-29	Women	-6%	1%	-2%	0%	-25%
	Men	0%	3%	0%	0%	-28%
30-34	Women	-5%	-1%	-6%	0%	-23%
	Men	-9%	-6%	-8%	0%	-36%
35 and over	Women	-17%	-9%	-8%	0%	-22%
	Men	-30%	-16%	-9%	0%	-27%
All ages	Women	-4%	2%	-1%	0%	-18%
	Men	-12%	-3%	-2%	0%	-26%

IB.2.5 Applicants by sex : UK

Difference between cycle and 2016 cycle

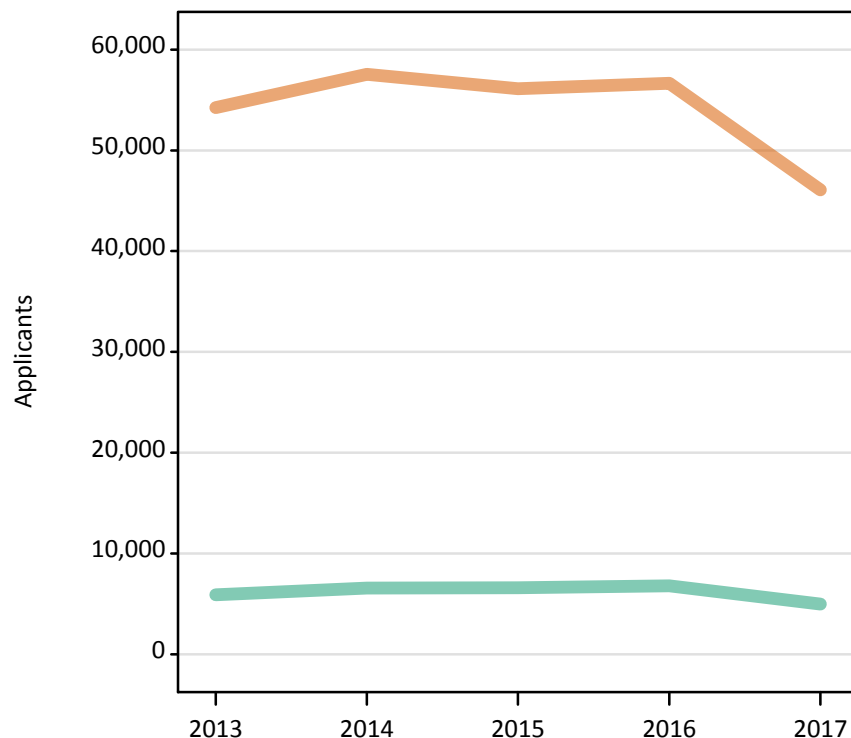
Men
Women



Note: The percentage change is not plotted in the above chart for groups with fewer than 500 applicants in any one cycle.

IB.2.6 Applicants by sex : UK

Men
Women



IB.2.7 Applicants by age and sex : UK

Age group and sex of applicant		2013	2014	2015	2016	2017
Under 18	Women					
	Men					
18	Women	11,300	11,520	11,960	11,670	10,770
	Men	500	550	540	530	470
19	Women	6,390	6,680	6,360	6,500	5,420
	Men	420	440	450	420	350
20-24	Women	14,800	15,890	14,920	14,210	11,350
	Men	1,310	1,480	1,380	1,310	950
25-29	Women	8,350	9,070	8,720	8,990	6,680
	Men	1,080	1,130	1,100	1,100	790
30-34	Women	5,480	5,720	5,440	5,780	4,400
	Men	850	890	860	940	590
35 and over	Women	7,880	8,620	8,660	9,460	7,400
	Men	1,740	2,090	2,270	2,490	1,830
All ages	Women	54,260	57,550	56,110	56,660	46,070
	Men	5,890	6,570	6,610	6,790	4,980

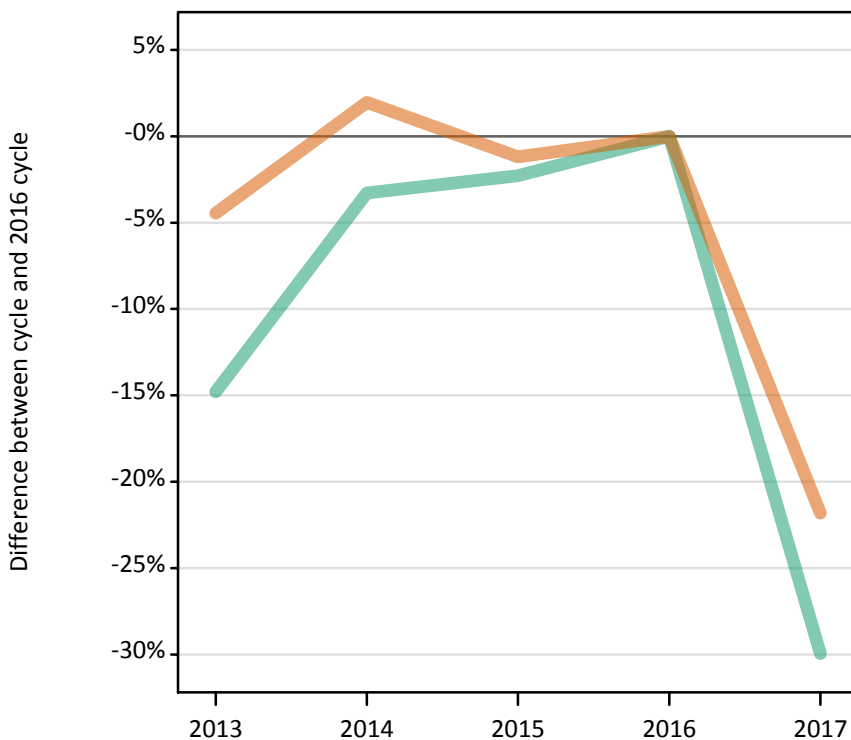
IB.2.8 Applicants by age and sex : UK

Difference between cycle and 2016 cycle

Age group and sex of applicant		2013	2014	2015	2016	2017
Under 18	Women					
	Men					
18	Women	-3%	-1%	2%	0%	-8%
	Men	-6%	3%	2%	0%	-11%
19	Women	-2%	3%	-2%	0%	-17%
	Men	0%	6%	8%	0%	-17%
20-24	Women	4%	12%	5%	0%	-20%
	Men	-0%	13%	6%	0%	-27%
25-29	Women	-7%	1%	-3%	0%	-26%
	Men	-2%	2%	-0%	0%	-28%
30-34	Women	-5%	-1%	-6%	0%	-24%
	Men	-9%	-6%	-8%	0%	-38%
35 and over	Women	-17%	-9%	-8%	0%	-22%
	Men	-30%	-16%	-9%	0%	-26%
All ages	Women	-4%	2%	-1%	0%	-19%
	Men	-13%	-3%	-3%	0%	-27%

IB.2.9 Applicants by sex : England
 Difference between cycle and 2016 cycle

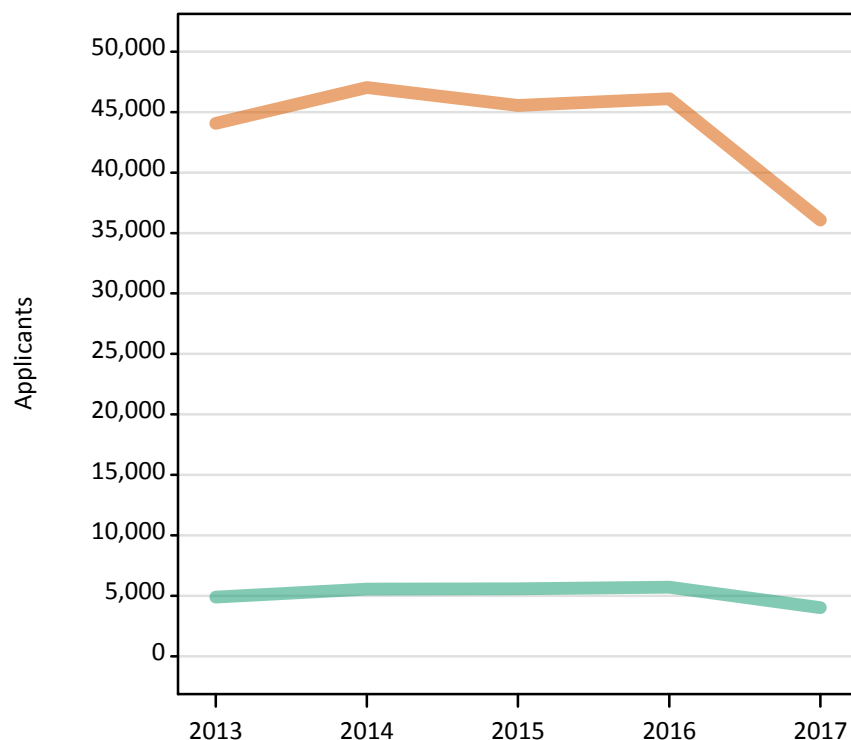
Men
 Women



Note: The percentage change is not plotted in the above chart for groups with fewer than 500 applicants in any one cycle.

IB.2.10 Applicants by sex : England

Men
 Women



IB.2.11 Applicants by age and sex : England

Age group and sex of applicant		2013	2014	2015	2016	2017
Under 18	Women					
	Men					
18	Women	8,680	8,920	9,240	9,080	8,210
	Men	340	390	390	380	330
19	Women	5,170	5,470	5,210	5,270	4,280
	Men	330	350	380	310	270
20-24	Women	11,960	12,970	12,080	11,450	8,870
	Men	1,050	1,200	1,130	1,060	710
25-29	Women	6,840	7,370	7,030	7,330	5,110
	Men	860	930	900	890	590
30-34	Women	4,610	4,800	4,520	4,770	3,400
	Men	730	750	740	800	470
35 and over	Women	6,780	7,470	7,470	8,190	6,170
	Men	1,570	1,910	2,060	2,280	1,640
All ages	Women	44,060	47,020	45,560	46,110	36,060
	Men	4,880	5,540	5,590	5,720	4,010

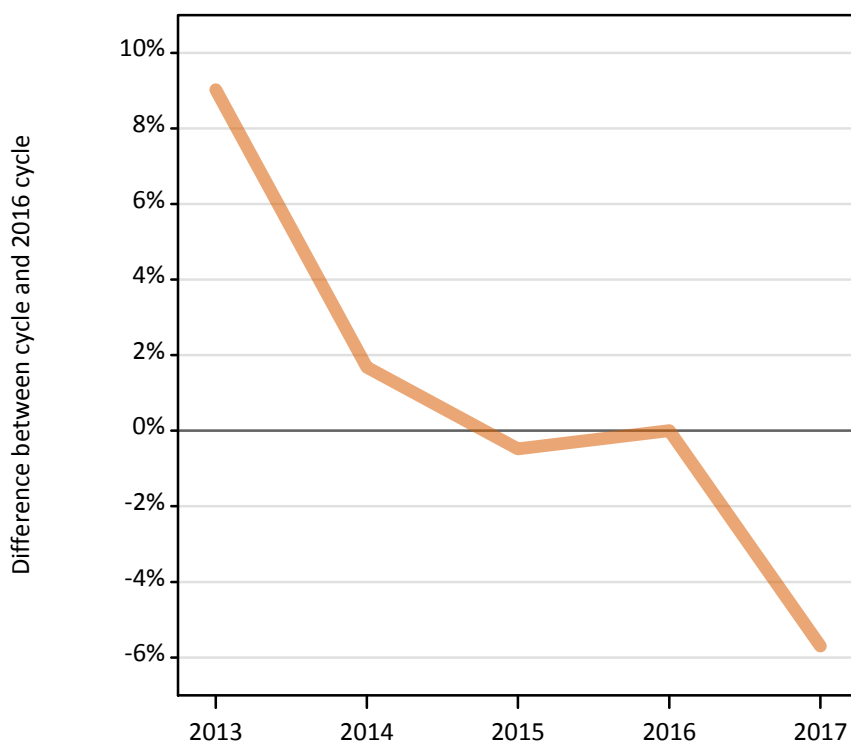
IB.2.12 Applicants by age and sex : England

Difference between cycle and 2016 cycle

Age group and sex of applicant		2013	2014	2015	2016	2017
Under 18	Women					
	Men					
18	Women	-4%	-2%	2%	0%	-10%
	Men	-11%	1%	1%	0%	-15%
19	Women	-2%	4%	-1%	0%	-19%
	Men	4%	12%	23%	0%	-13%
20-24	Women	4%	13%	5%	0%	-23%
	Men	-1%	13%	6%	0%	-33%
25-29	Women	-7%	1%	-4%	0%	-30%
	Men	-3%	4%	1%	0%	-34%
30-34	Women	-3%	1%	-5%	0%	-29%
	Men	-8%	-5%	-7%	0%	-41%
35 and over	Women	-17%	-9%	-9%	0%	-25%
	Men	-31%	-16%	-10%	0%	-28%
All ages	Women	-4%	2%	-1%	0%	-22%
	Men	-15%	-3%	-2%	0%	-30%

IB.2.13 Applicants by sex : Northern Ireland Difference between cycle and 2016 cycle

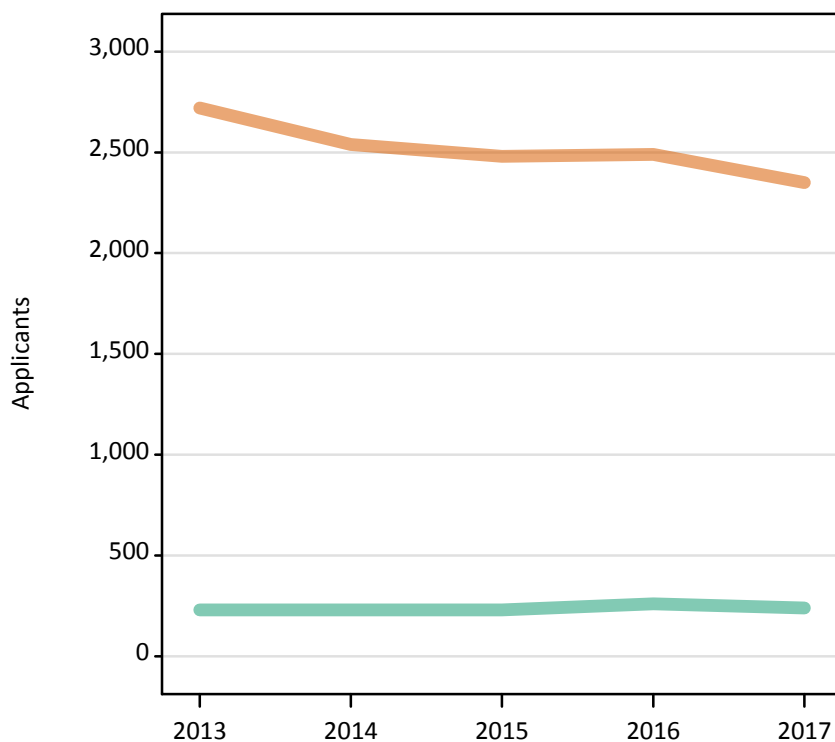
Men
Women



Note: The percentage change is not plotted in the above chart for groups with fewer than 500 applicants in any one cycle.

IB.2.14 Applicants by sex : Northern Ireland

Men
Women



IB.2.15 Applicants by age and sex : Northern Ireland

Age group and sex of applicant		2013	2014	2015	2016	2017
Under 18	Women					
	Men					
18	Women	930	830	850	840	830
	Men	60	60	50	50	70
19	Women	400	370	330	370	360
	Men	30	30	30	40	40
20-24	Women	750	700	680	640	600
	Men	50	70	50	60	60
25-29	Women	300	320	310	300	240
	Men	40	40	40	50	40
30-34	Women	160	170	160	170	150
	Men	20	20	20	20	20
35 and over	Women	170	140	160	170	170
	Men	20	20	30	30	20
All ages	Women	2,720	2,540	2,480	2,490	2,350
	Men	230	230	230	260	240

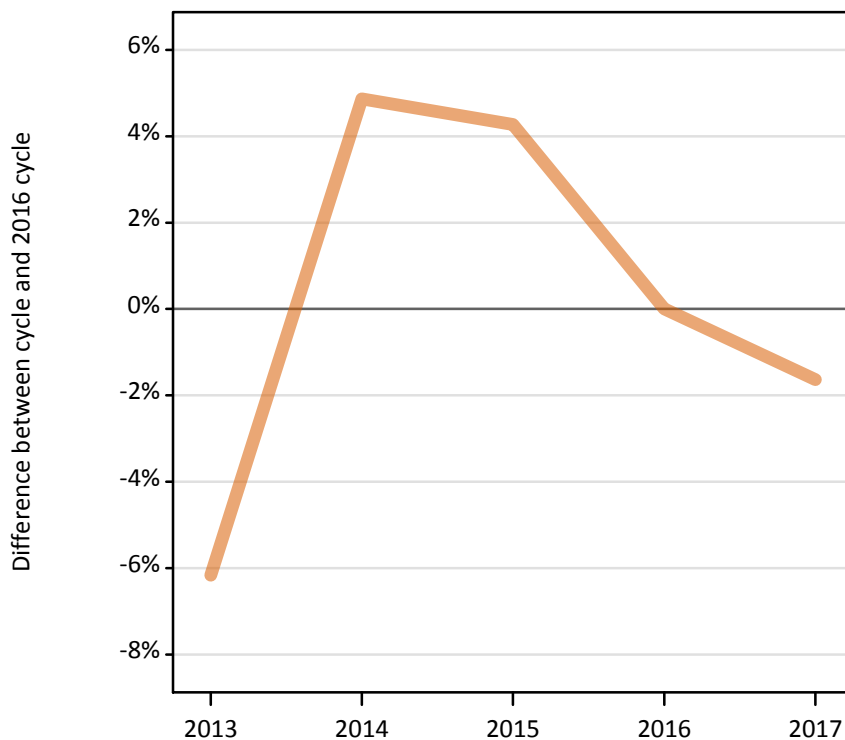
IB.2.16 Applicants by age and sex : Northern Ireland

Difference between cycle and 2016 cycle

Age group and sex of applicant		2013	2014	2015	2016	2017
Under 18	Women					
	Men					
18	Women	11%	-1%	2%	0%	-1%
	Men	20%	18%	6%	0%	33%
19	Women	9%	-0%	-10%	0%	-3%
	Men	-26%	-31%	-24%	0%	-17%
20-24	Women	17%	9%	5%	0%	-7%
	Men	-16%	5%	-16%	0%	-2%
25-29	Women	-1%	7%	1%	0%	-19%
	Men	-4%	-15%	-24%	0%	-24%
30-34	Women	-2%	2%	-5%	0%	-10%
	Men	-13%	-30%	-4%	0%	-9%
35 and over	Women	0%	-17%	-8%	0%	-1%
	Men	-34%	-34%	0%	0%	-47%
All ages	Women	9%	2%	-0%	0%	-6%
	Men	-11%	-10%	-11%	0%	-7%

IB.2.17 Applicants by sex : Scotland
 Difference between cycle and 2016 cycle

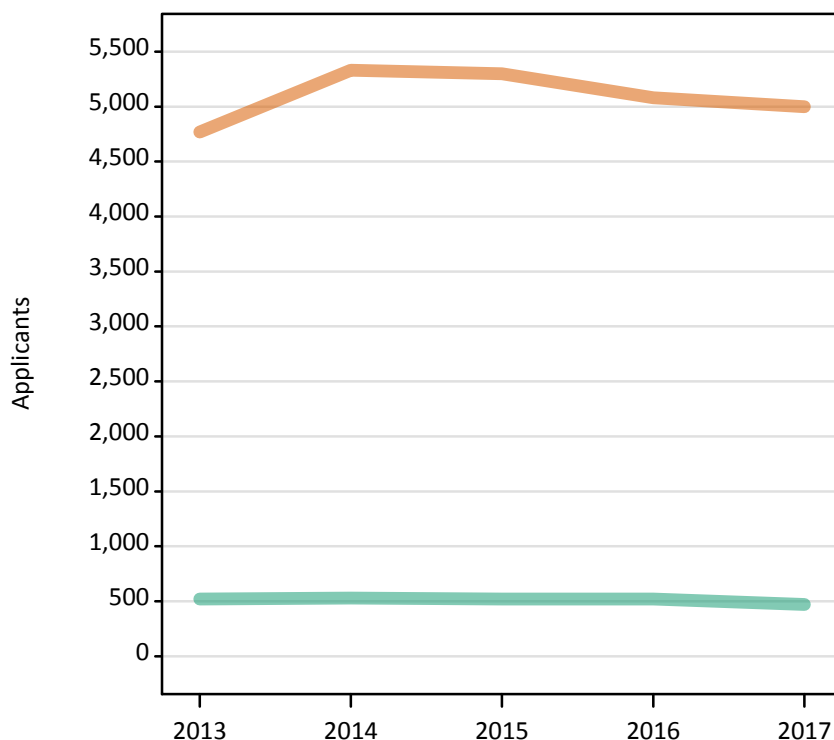
Men
 Women



Note: The percentage change is not plotted in the above chart for groups with fewer than 500 applicants in any one cycle.

IB.2.18 Applicants by sex : Scotland

Men
 Women



IB.2.19 Applicants by age and sex : Scotland

Age group and sex of applicant		2013	2014	2015	2016	2017
Under 18	Women					
	Men					
18	Women	1,110	1,190	1,220	1,100	1,120
	Men	70	70	70	70	40
19	Women	520	550	510	520	460
	Men	50	40	20	40	30
20-24	Women	1,310	1,470	1,360	1,250	1,190
	Men	120	130	130	120	110
25-29	Women	740	880	900	870	860
	Men	110	100	110	100	100
30-34	Women	430	490	540	540	570
	Men	70	70	60	80	70
35 and over	Women	610	700	730	760	760
	Men	110	120	130	110	120
All ages	Women	4,770	5,330	5,300	5,080	5,000
	Men	520	530	520	520	470

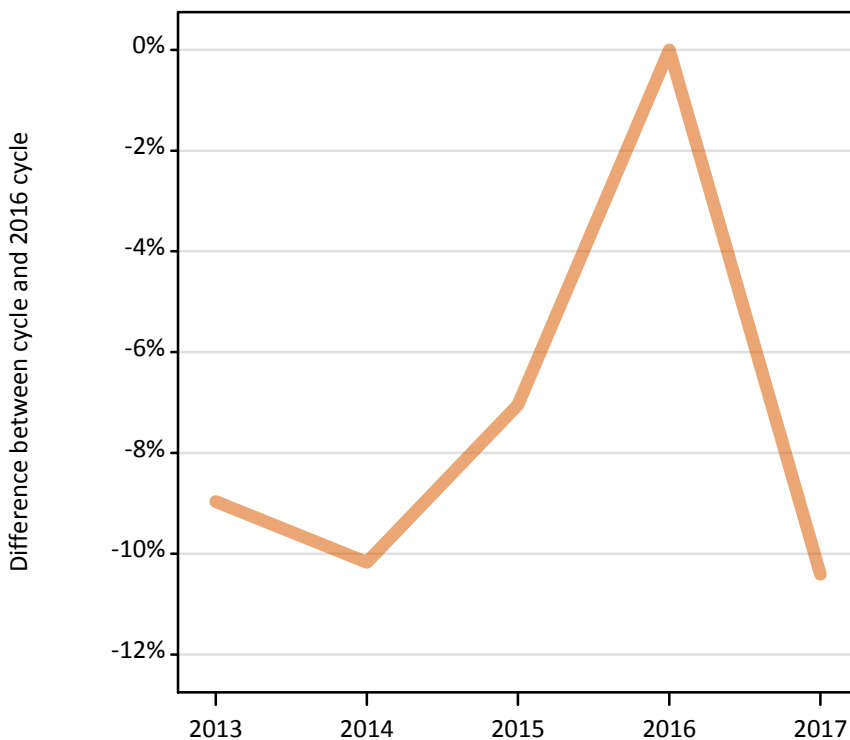
IB.2.20 Applicants by age and sex : Scotland

Difference between cycle and 2016 cycle

Age group and sex of applicant		2013	2014	2015	2016	2017
Under 18	Women					
	Men					
18	Women	1%	8%	11%	0%	2%
	Men	4%	1%	-3%	0%	-40%
19	Women	0%	4%	-2%	0%	-12%
	Men	13%	5%	-43%	0%	-38%
20-24	Women	5%	17%	9%	0%	-5%
	Men	3%	9%	12%	0%	-4%
25-29	Women	-15%	1%	4%	0%	-1%
	Men	4%	-4%	3%	0%	0%
30-34	Women	-20%	-9%	-1%	0%	5%
	Men	-15%	-8%	-23%	0%	-18%
35 and over	Women	-19%	-7%	-4%	0%	0%
	Men	-2%	6%	15%	0%	9%
All ages	Women	-6%	5%	4%	0%	-2%
	Men	1%	2%	-0%	0%	-10%

IB.2.21 Applicants by sex : Wales
 Difference between cycle and 2016 cycle

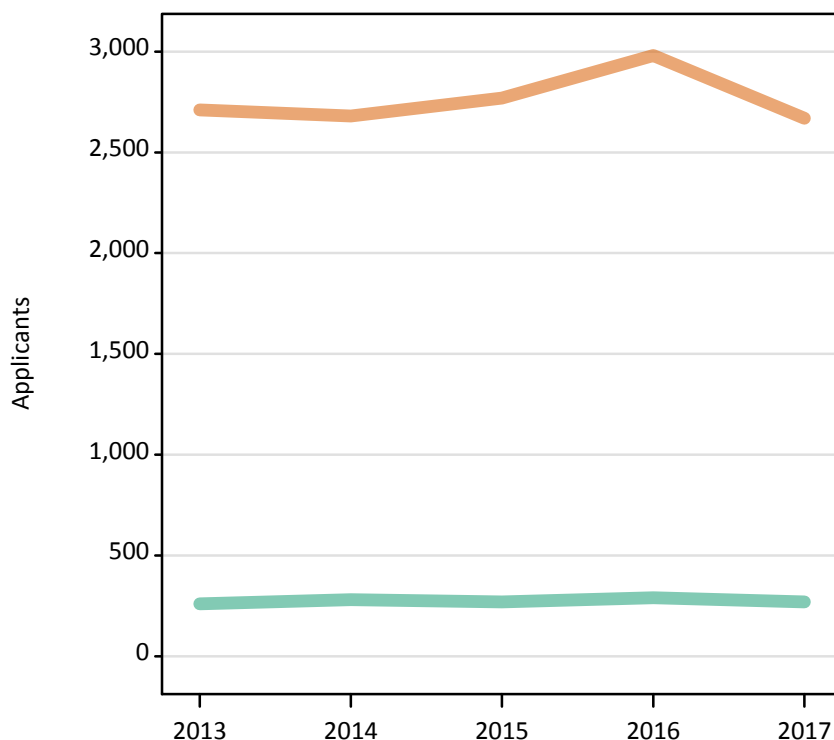
Men
 Women



Note: The percentage change is not plotted in the above chart for groups with fewer than 500 applicants in any one cycle.

IB.2.22 Applicants by sex : Wales

Men
 Women



IB.2.23 Applicants by age and sex : Wales

Age group and sex of applicant		2013	2014	2015	2016	2017
Under 18	Women					
	Men					
18	Women	580	580	650	660	610
	Men	30	30	30	30	40
19	Women	290	300	300	340	320
	Men	20	20	20	30	20
20-24	Women	790	750	800	860	690
	Men	80	80	70	70	70
25-29	Women	470	500	480	480	470
	Men	60	60	60	60	60
30-34	Women	270	250	230	290	290
	Men	30	40	40	40	30
35 and over	Women	310	300	310	350	300
	Men	40	40	50	70	60
All ages	Women	2,710	2,680	2,770	2,980	2,670
	Men	260	280	270	290	270

IB.2.24 Applicants by age and sex : Wales

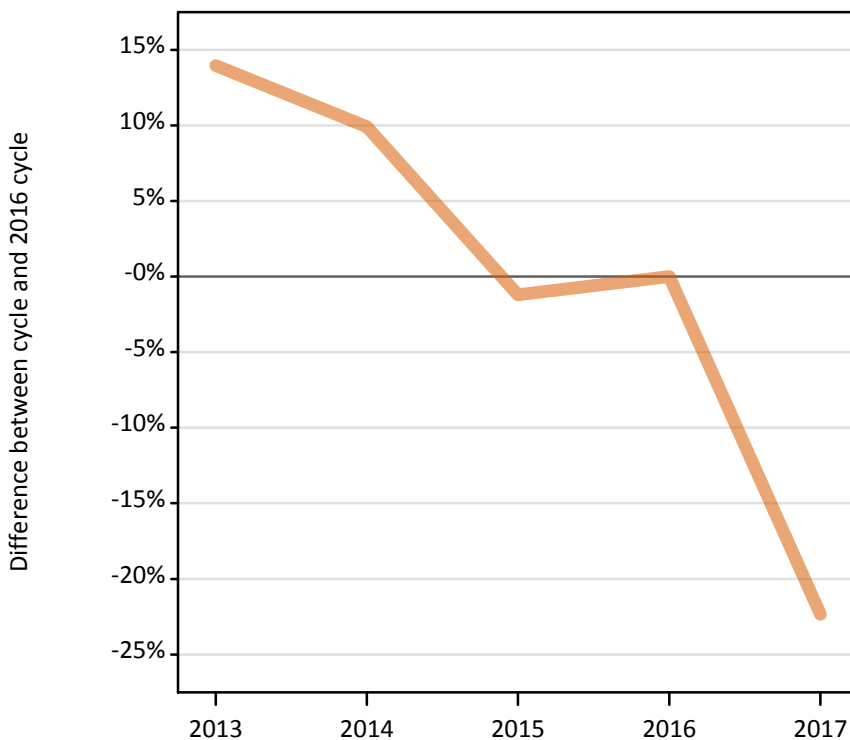
Difference between cycle and 2016 cycle

Age group and sex of applicant		2013	2014	2015	2016	2017
Under 18	Women					
	Men					
18	Women	-12%	-12%	-2%	0%	-7%
	Men	-4%	15%	15%	0%	35%
19	Women	-13%	-12%	-10%	0%	-7%
	Men	-28%	-12%	-40%	0%	-36%
20-24	Women	-8%	-13%	-7%	0%	-20%
	Men	25%	20%	11%	0%	2%
25-29	Women	-4%	2%	-1%	0%	-4%
	Men	5%	-3%	0%	0%	2%
30-34	Women	-6%	-14%	-20%	0%	-3%
	Men	-19%	2%	0%	0%	-29%
35 and over	Women	-10%	-12%	-11%	0%	-13%
	Men	-40%	-35%	-25%	0%	-15%
All ages	Women	-9%	-10%	-7%	0%	-10%
	Men	-8%	-4%	-6%	0%	-7%

IB.2.25 Applicants by sex : EU (excluding UK)

Difference between cycle and 2016 cycle

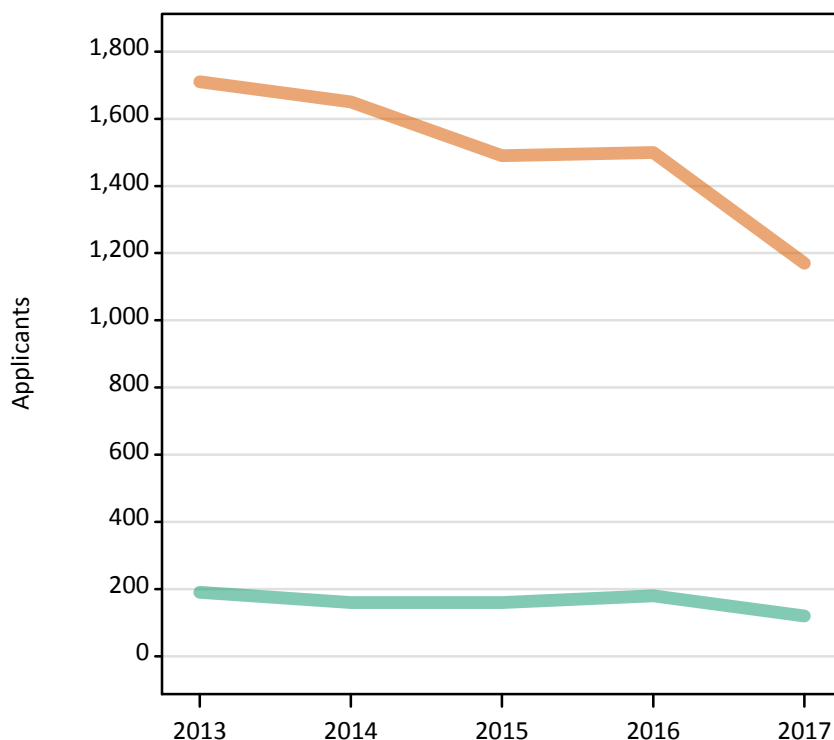
Men
Women



Note: The percentage change is not plotted in the above chart for groups with fewer than 500 applicants in any one cycle.

IB.2.26 Applicants by sex : EU (excluding UK)

Men
Women



IB.2.27 Applicants by age and sex : EU (excluding UK)

Age group and sex of applicant		2013	2014	2015	2016	2017
Under 18	Women					
	Men					
18	Women	400	350	310	360	250
	Men	30	20	20	30	20
19	Women	380	390	360	370	300
	Men	30	30	30	30	20
20-24	Women	550	540	490	470	400
	Men	60	50	50	60	40
25-29	Women	180	180	160	140	80
	Men	30	20	20	20	10
30-34	Women	60	50	40	40	30
	Men	20	10	10	10	10
35 and over	Women	60	70	60	60	50
	Men	30	20	30	30	20
All ages	Women	1,710	1,650	1,490	1,500	1,170
	Men	190	160	160	180	120

IB.2.28 Applicants by age and sex : EU (excluding UK)

Difference between cycle and 2016 cycle

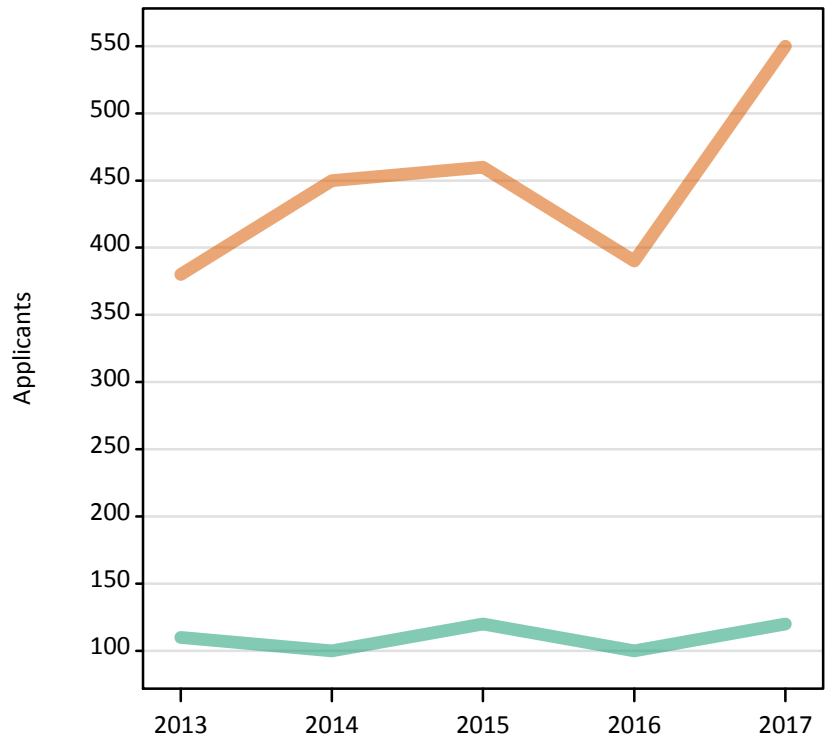
Age group and sex of applicant		2013	2014	2015	2016	2017
Under 18	Women					
	Men					
18	Women	13%	-2%	-13%	0%	-30%
	Men	-10%	-26%	-35%	0%	-32%
19	Women	3%	5%	-4%	0%	-20%
	Men	0%	-3%	0%	0%	-21%
20-24	Women	18%	15%	6%	0%	-14%
	Men	7%	-2%	-13%	0%	-31%
25-29	Women	27%	24%	15%	0%	-41%
	Men	25%	20%	-20%	0%	-50%
30-34	Women	49%	24%	0%	0%	-22%
	Men	25%	-17%	0%	0%	-58%
35 and over	Women	-2%	11%	0%	0%	-26%
	Men	-9%	-44%	-15%	0%	-47%
All ages	Women	14%	10%	-1%	0%	-22%
	Men	4%	-13%	-12%	0%	-35%

IB.2.29 Applicants by sex : Not EU
Difference between cycle and 2016 cycle

[Chart suppressed due to small numbers]

IB.2.30 Applicants by sex : Not EU

Men
Women



IB.2.31 Applicants by age and sex : Not EU

Age group and sex of applicant		2013	2014	2015	2016	2017
Under 18	Women					
	Men					
18	Women	70	60	70	60	90
	Men	10	10	10	10	10
19	Women	40	50	50	40	60
	Men	10	10	10	10	10
20-24	Women	120	150	130	120	150
	Men	30	30	40	20	30
25-29	Women	80	80	100	70	90
	Men	40	20	20	20	20
30-34	Women	40	40	50	40	70
	Men	10	10	20	20	30
35 and over	Women	30	50	50	50	70
	Men	10	20	20	20	20
All ages	Women	380	450	460	390	550
	Men	110	100	120	100	120

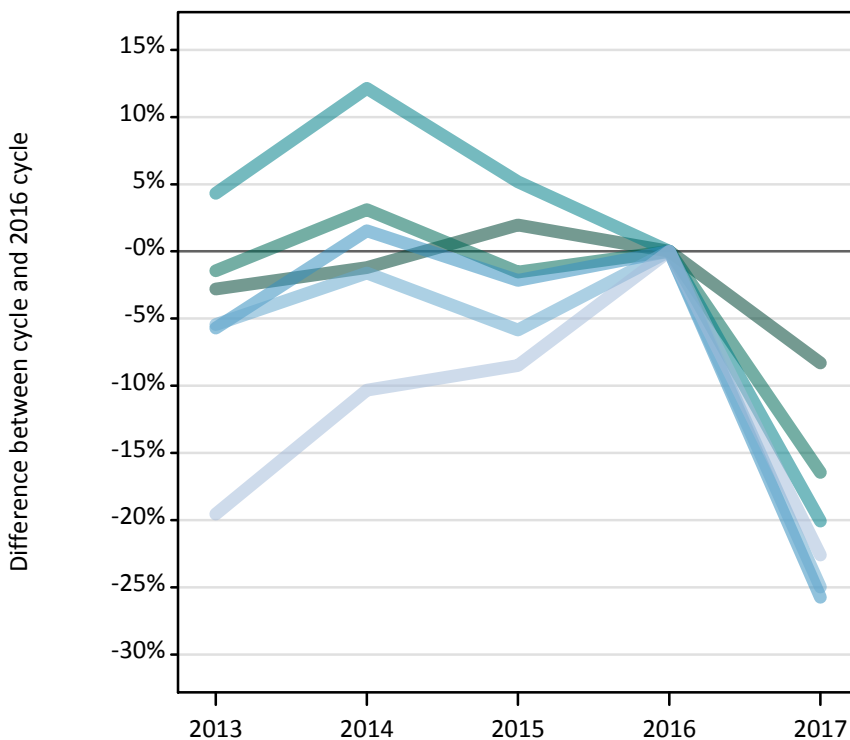
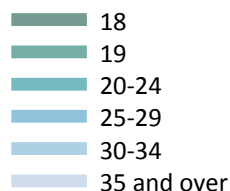
IB.2.32 Applicants by age and sex : Not EU

Difference between cycle and 2016 cycle

Age group and sex of applicant		2013	2014	2015	2016	2017
Under 18	Women					
	Men					
18	Women	18%	7%	29%	0%	57%
	Men	-10%	-20%	0%	0%	10%
19	Women	0%	39%	42%	0%	72%
	Men	-55%	-36%	-18%	0%	-9%
20-24	Women	3%	30%	14%	0%	30%
	Men	62%	48%	81%	0%	43%
25-29	Women	18%	13%	35%	0%	32%
	Men	118%	24%	41%	0%	41%
30-34	Women	-12%	-5%	17%	0%	62%
	Men	-25%	-13%	25%	0%	56%
35 and over	Women	-48%	0%	-11%	0%	28%
	Men	-45%	-23%	-9%	0%	-18%
All ages	Women	-1%	16%	19%	0%	42%
	Men	10%	3%	25%	0%	21%

IB.2.33 Applicants by domicile and age : All domiciles

Difference between cycle and 2016 cycle



Note: The percentage change is not plotted in the above chart for groups with fewer than 500 applicants in any one cycle.

IB.2.34 Applicants by domicile and age : All domiciles

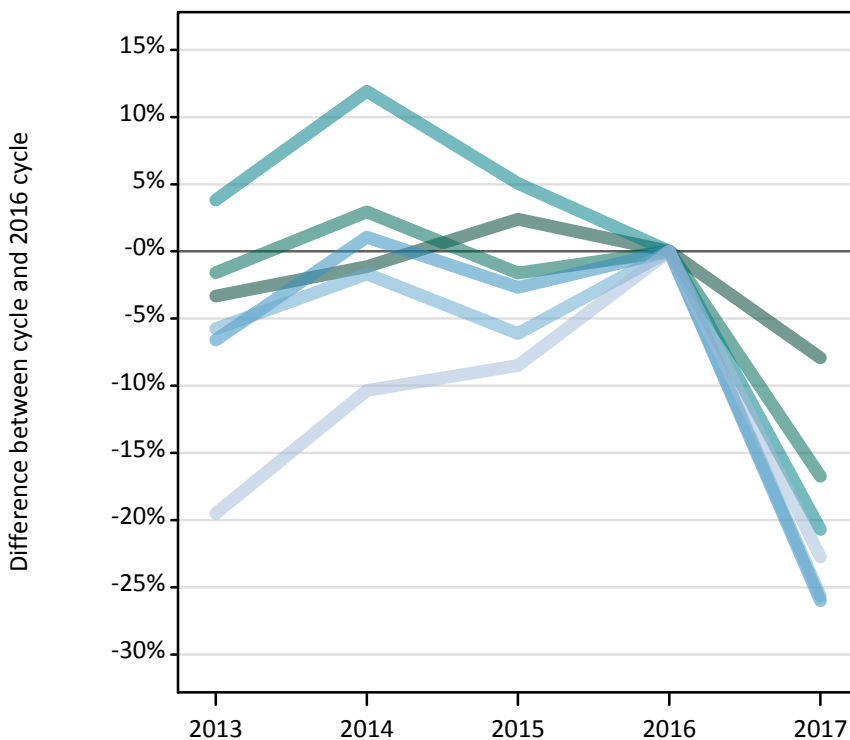
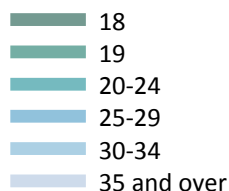
Domicile and age group		2013	2014	2015	2016	2017
All domiciles	Under 18					
	18	12,300	12,510	12,910	12,660	11,610
	19	7,270	7,600	7,260	7,370	6,160
	20-24	16,870	18,140	17,010	16,170	12,930
	25-29	9,750	10,500	10,120	10,340	7,680
	30-34	6,450	6,720	6,430	6,830	5,120
	35 and over	9,750	10,870	11,090	12,120	9,380

IB.2.35 Applicants by domicile and age : All domiciles

Difference between cycle and 2016 cycle

Domicile and age group		2013	2014	2015	2016	2017
All domiciles	Under 18					
	18	-3%	-1%	2%	0%	-8%
	19	-1%	3%	-2%	0%	-16%
	20-24	4%	12%	5%	0%	-20%
	25-29	-6%	2%	-2%	0%	-26%
	30-34	-5%	-2%	-6%	0%	-25%
	35 and over	-20%	-10%	-8%	0%	-23%

IB.2.36 Applicants by domicile and age : UK
Difference between cycle and 2016 cycle



Note: The percentage change is not plotted in the above chart for groups with fewer than 500 applicants in any one cycle.

IB.2.37 Applicants by domicile and age : UK

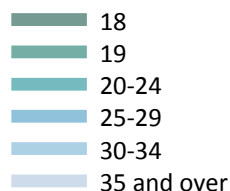
Domicile and age group		2013	2014	2015	2016	2017
UK	Under 18					
	18	11,800	12,070	12,490	12,200	11,240
	19	6,810	7,130	6,810	6,920	5,760
	20-24	16,110	17,360	16,300	15,520	12,310
	25-29	9,420	10,190	9,820	10,090	7,470
	30-34	6,330	6,600	6,300	6,710	4,990
	35 and over	9,620	10,710	10,930	11,940	9,230

IB.2.38 Applicants by domicile and age : UK
Difference between cycle and 2016 cycle

Domicile and age group		2013	2014	2015	2016	2017
UK	Under 18					
	18	-3%	-1%	2%	0%	-8%
	19	-2%	3%	-2%	0%	-17%
	20-24	4%	12%	5%	0%	-21%
	25-29	-7%	1%	-3%	0%	-26%
	30-34	-6%	-2%	-6%	0%	-26%
	35 and over	-19%	-10%	-8%	0%	-23%

IB.2.39 Applicants by domicile and age : England

Difference between cycle and 2016 cycle



Note: The percentage change is not plotted in the above chart for groups with fewer than 500 applicants in any one cycle.

IB.2.40 Applicants by domicile and age : England

Domicile and age group		2013	2014	2015	2016	2017
England	Under 18					
	18	9,020	9,310	9,630	9,470	8,540
	19	5,500	5,820	5,590	5,580	4,550
	20-24	13,010	14,170	13,200	12,510	9,590
	25-29	7,700	8,300	7,930	8,220	5,700
	30-34	5,340	5,550	5,250	5,570	3,870
	35 and over	8,350	9,380	9,530	10,470	7,810

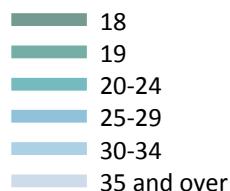
IB.2.41 Applicants by domicile and age : England

Difference between cycle and 2016 cycle

Domicile and age group		2013	2014	2015	2016	2017
England	Under 18					
	18	-5%	-2%	2%	0%	-10%
	19	-2%	4%	0%	0%	-18%
	20-24	4%	13%	6%	0%	-23%
	25-29	-6%	1%	-4%	0%	-31%
	30-34	-4%	0%	-6%	0%	-30%
	35 and over	-20%	-10%	-9%	0%	-25%

IB.2.42 Applicants by domicile and age : Northern Ireland

Difference between cycle and 2016 cycle



Note: The percentage change is not plotted in the above chart for groups with fewer than 500 applicants in any one cycle.

IB.2.43 Applicants by domicile and age : Northern Ireland

Domicile and age group		2013	2014	2015	2016	2017
Northern Ireland	Under 18					
	18	990	890	900	890	890
	19	440	400	370	410	390
	20-24	800	770	730	710	660
	25-29	340	360	340	350	280
	30-34	180	190	180	190	170
	35 and over	190	160	190	200	190

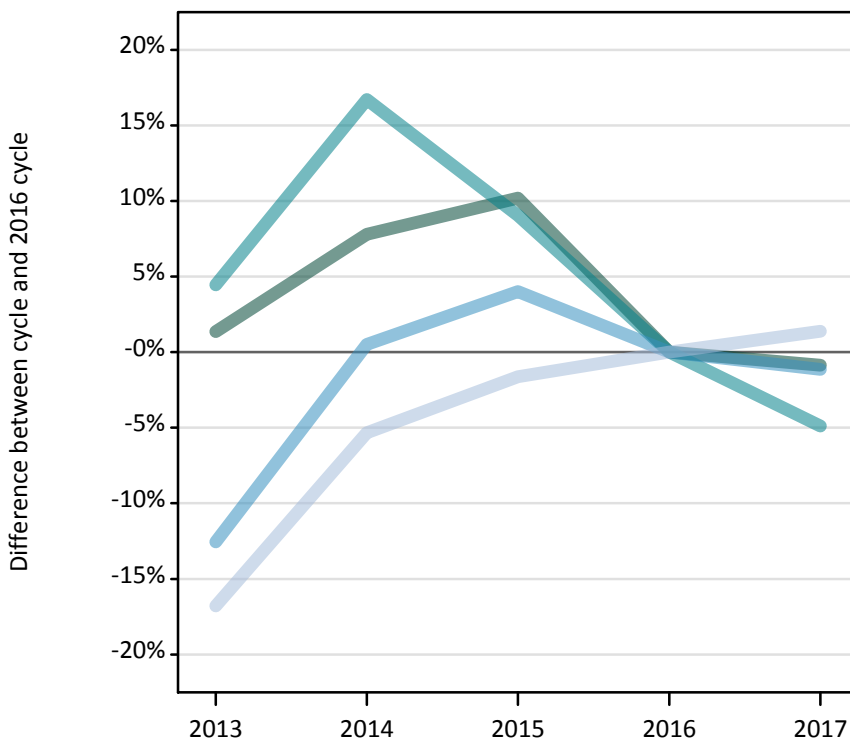
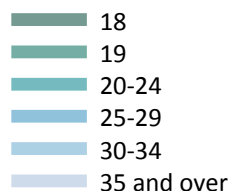
IB.2.44 Applicants by domicile and age : Northern Ireland

Difference between cycle and 2016 cycle

Domicile and age group		2013	2014	2015	2016	2017
Northern Ireland	Under 18					
	18	12%	0%	2%	0%	1%
	19	5%	-3%	-12%	0%	-5%
	20-24	14%	8%	4%	0%	-7%
	25-29	-2%	4%	-2%	0%	-20%
	30-34	-4%	-2%	-5%	0%	-9%
	35 and over	-5%	-19%	-7%	0%	-8%

IB.2.45 Applicants by domicile and age : Scotland

Difference between cycle and 2016 cycle



Note: The percentage change is not plotted in the above chart for groups with fewer than 500 applicants in any one cycle.

IB.2.46 Applicants by domicile and age : Scotland

Domicile and age group		2013	2014	2015	2016	2017
Scotland	Under 18					
	18	1,180	1,260	1,290	1,170	1,160
	19	570	590	530	560	490
	20-24	1,430	1,600	1,490	1,370	1,300
	25-29	850	980	1,010	970	960
	30-34	500	570	600	620	630
	35 and over	720	820	850	860	880

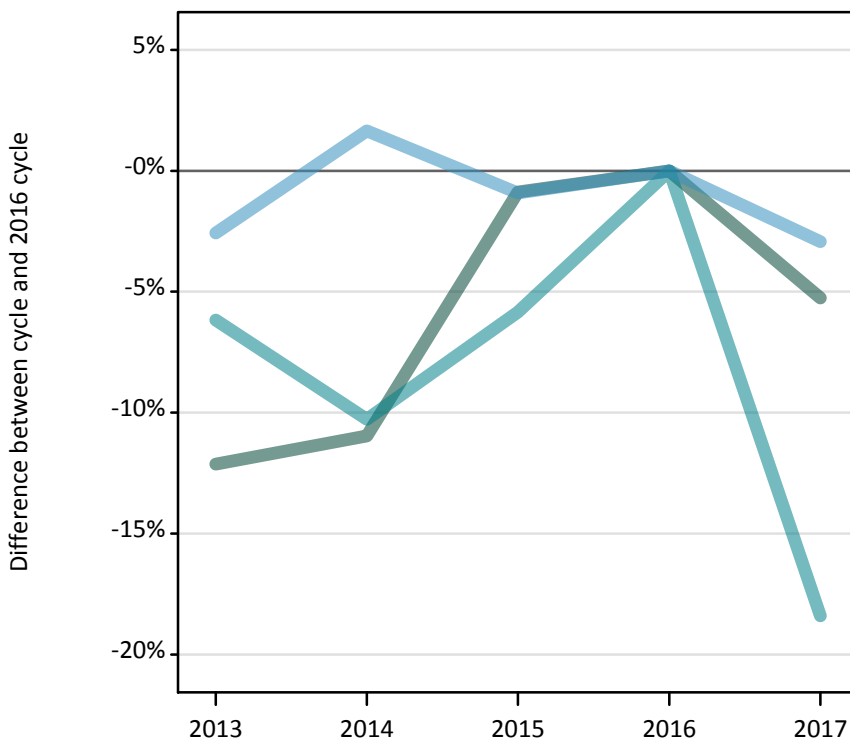
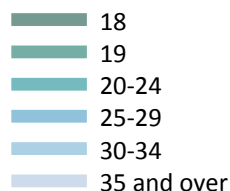
IB.2.47 Applicants by domicile and age : Scotland

Difference between cycle and 2016 cycle

Domicile and age group		2013	2014	2015	2016	2017
Scotland	Under 18					
	18	1%	8%	10%	0%	-1%
	19	1%	4%	-5%	0%	-13%
	20-24	4%	17%	9%	0%	-5%
	25-29	-13%	1%	4%	0%	-1%
	30-34	-20%	-9%	-4%	0%	2%
	35 and over	-17%	-5%	-2%	0%	1%

IB.2.48 Applicants by domicile and age : Wales

Difference between cycle and 2016 cycle



Note: The percentage change is not plotted in the above chart for groups with fewer than 500 applicants in any one cycle.

IB.2.49 Applicants by domicile and age : Wales

Domicile and age group		2013	2014	2015	2016	2017
Wales	Under 18					
	18	600	610	680	680	650
	19	310	320	320	360	330
	20-24	870	830	870	920	750
	25-29	530	550	540	550	530
	30-34	310	300	280	340	320
	35 and over	350	350	360	410	360

IB.2.50 Applicants by domicile and age : Wales

Difference between cycle and 2016 cycle

Domicile and age group		2013	2014	2015	2016	2017
Wales	Under 18					
	18	-12%	-11%	-1%	0%	-5%
	19	-14%	-12%	-12%	0%	-9%
	20-24	-6%	-10%	-6%	0%	-18%
	25-29	-3%	2%	-1%	0%	-3%
	30-34	-8%	-12%	-18%	0%	-6%
	35 and over	-15%	-16%	-13%	0%	-13%

IB.2.51 Applicants by domicile and age : EU (excluding UK)

Difference between cycle and 2016 cycle

[Chart suppressed due to small numbers]

IB.2.52 Applicants by domicile and age : EU (excluding UK)

Domicile and age group		2013	2014	2015	2016	2017
EU (excluding UK)	Under 18					
	18	430	370	330	390	270
	19	410	420	390	400	320
	20-24	610	590	540	520	440
	25-29	210	200	180	160	90
	30-34	80	60	50	50	40
	35 and over	90	90	90	100	60

IB.2.53 Applicants by domicile and age : EU (excluding UK)

Difference between cycle and 2016 cycle

Domicile and age group		2013	2014	2015	2016	2017
EU (excluding UK)	Under 18					
	18	11%	-4%	-15%	0%	-30%
	19	2%	4%	-3%	0%	-20%
	20-24	17%	13%	4%	0%	-16%
	25-29	26%	24%	10%	0%	-42%
	30-34	43%	15%	0%	0%	-30%
	35 and over	-4%	-8%	-5%	0%	-33%

IB.2.54 Applicants by domicile and age : Not EU

Difference between cycle and 2016 cycle

[Chart suppressed due to small numbers]

IB.2.55 Applicants by domicile and age : Not EU

Domicile and age group		2013	2014	2015	2016	2017
Not EU	Under 18					
	18	80	70	80	70	100
	19	40	60	60	50	70
	20-24	150	180	170	140	180
	25-29	120	100	120	90	120
	30-34	50	50	70	60	90
	35 and over	40	70	70	80	90

IB.2.56 Applicants by domicile and age : Not EU

Difference between cycle and 2016 cycle

Domicile and age group		2013	2014	2015	2016	2017
Not EU	Under 18					
	18	14%	3%	24%	0%	50%
	19	-13%	21%	28%	0%	53%
	20-24	12%	33%	24%	0%	32%
	25-29	38%	15%	36%	0%	34%
	30-34	-16%	-7%	19%	0%	60%
	35 and over	-47%	-7%	-11%	0%	14%

IB.2.57 Technical notes and definitions

Applicants have been able to submit applications for all 2017 courses since early September.

People who submit their applications to UCAS by the January deadline are considered 'on time' applicants for the large majority of courses offered through UCAS. Some art and design courses have a later deadline of 24 March. By definition all main scheme applications have been received by the 30 June deadline.

Subject group 'B7' covers courses related to nursing. These additional tables include applicants who made at least one choice to a 'B7' course by the 30 June deadline. The primary deadline applicant statistics, which include applicants to all courses, are available on the UCAS website.

Counts of the number of applicants reported have been rounded to the nearest 10 applicants, this may result in instances where totals do not equal the sum of the components. Proportional changes have been rounded to the nearest whole percentage point.

Applicants under the age of 18 are not shown, to avoid revealing data for any individual.

Age

This statistical release uses country-specific age definitions which align with the cut off points for school/college cohorts within the different administrations of the UK. For England and Wales ages are defined on the 31 August, for Northern Ireland on the 1 July and for Scotland on the 28 February the following year. Defining ages in this way matches the assignment of children to school cohorts. For applicants outside of the UK the cohort cut off for England and Wales has been used.

Applicant

A person who has made an application in the UCAS system during the cycle reported (including applications for deferred entry). Records of prior acceptance (RPAs) are excluded.

Application

An application to a course at a provider made by an applicant in the UCAS main scheme. Applicants may make up to five main scheme applications.

Country of provider

An applicant may be counted once for each provider country they have applied to in the main scheme. If an applicant has applied to providers in multiple countries then the applicant is counted once within each country of provider applied to.

This statistical release excludes a small number of applications to a provider based in the EU.

Domicile

Declared area of permanent residence. The Channel Islands and the Isle of Man have been assigned as 'Not EU'.

First time applicant

An applicant that did not apply to the UCAS scheme in the previous cycle.

Main scheme

The main UCAS application scheme through which up to five providers/courses can be applied to. This opens in September and closes to new applications on 30 June the following year.

Reapplicant

An applicant that applied to the UCAS scheme in the previous cycle.

Subject group

The JACS3 classification used to classify courses into subject groups.

Tariff group of provider

Providers are grouped as higher, medium or lower tariff based on their average levels of attainment of their accepted applicants (summarised through UCAS Tariff points) in recent cycles. Each group of providers accounted for around a third of all UK 18 year old acceptances in recent cycles.