

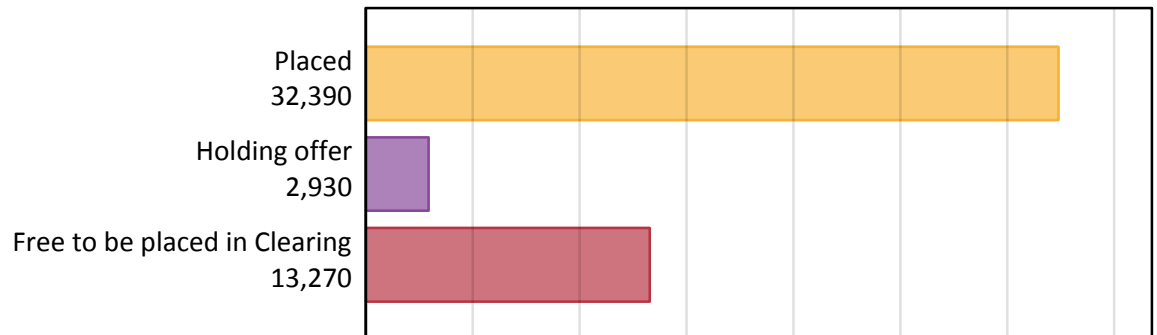
Daily Clearing Analysis: Overview

Analysis at 00:05 on Thursday 17 August 2017 (A level results day)

A.1 Applicants by type and status from Scotland, 2017 cycle

Applicant type	Status	2017
Main scheme	Placed (Clearing)	650
	Placed (Adjustment)	0
	Placed (Firm)	29,560
	Placed (Insurance)	1,380
	Placed (Other)	640
	Holding offer	2,930
	Free to be placed in Clearing	13,270
Direct to Clearing	Placed (Direct to Clearing)	170
	Other (Direct to Clearing)	360
All applicants	Placed	32,390

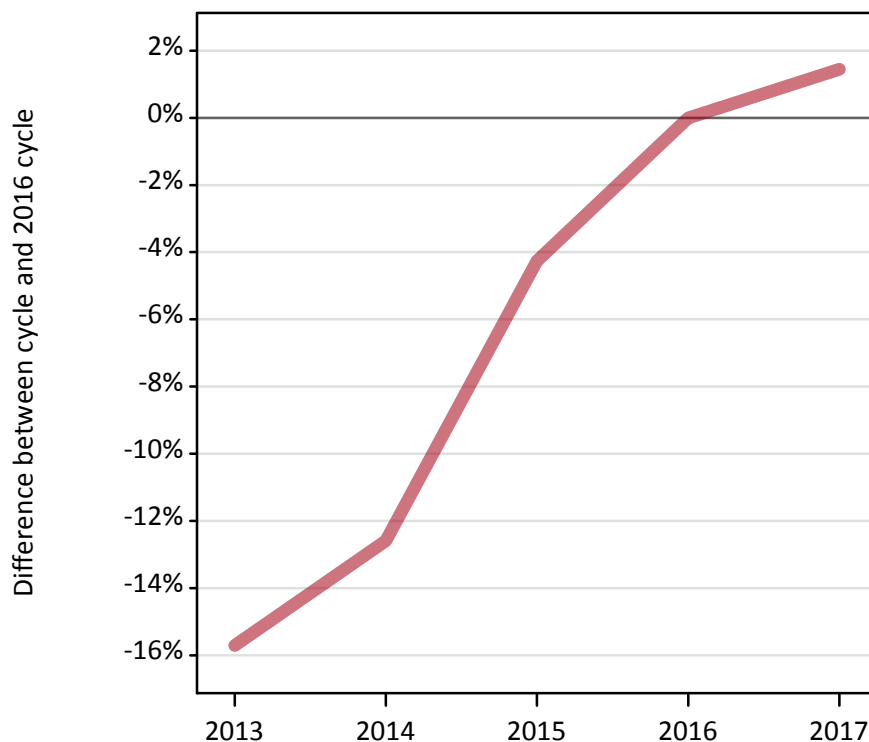
A.2 Summary of applicants who are placed, holding offers or free to be placed in Clearing (Scotland)



A.3 All placed applicants from Scotland: A level results day

All placed applicants: difference between cycle and 2016 cycle

Placed



A.4 All placed applicants from Scotland: A level results day

All placed applicants: applicants at A level results day

Applicant type	Status	2013	2014	2015	2016	2017
All applicants	Placed	26,910	27,910	30,570	31,930	32,390

A.5 All placed applicants from Scotland: A level results day

All placed applicants: difference between cycle and 2016 cycle

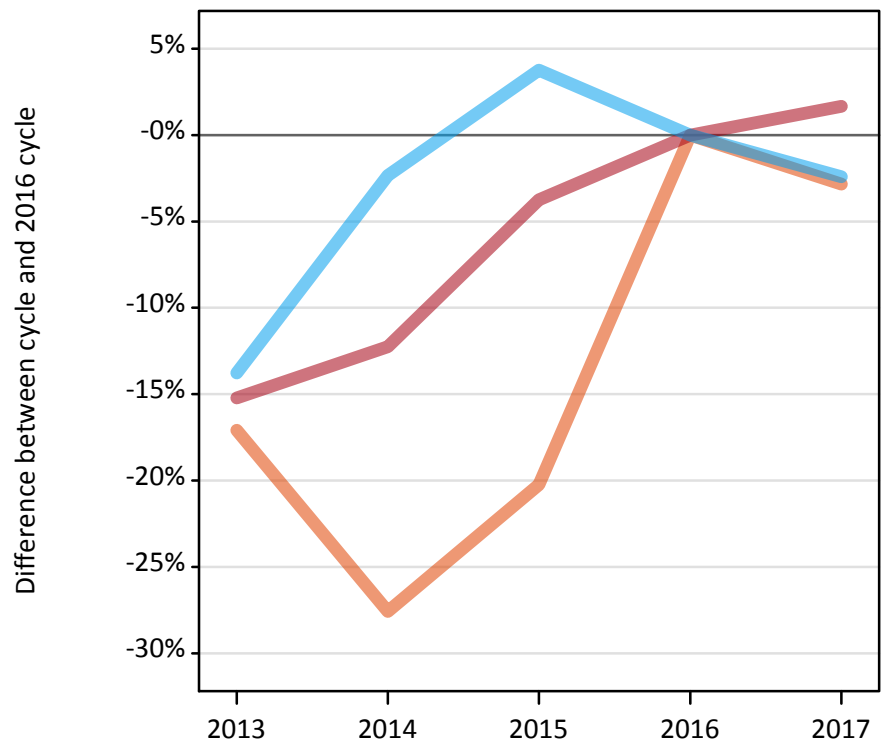
Applicant type	Status	2013	2014	2015	2016	2017
All applicants	Placed	-16%	-13%	-4%	0%	1%

Note: Percentage changes are not plotted for lines with, on average, fewer than 30 applicants per year. As a result, lines for some, or all, of the states may be missing.

A.6 Placed main scheme applicants from Scotland: A level results day

Selected placed routes: difference between cycle and 2016 cycle

- Placed (Clearing)
- Placed (Firm)
- Placed (Insurance)



A.7 Placed main scheme applicants from Scotland: A level results day

All Main scheme placed routes (excluding Adjustment): applicants at A level results day

Applicant type	Status	2013	2014	2015	2016	2017
Main scheme	Placed (Clearing)	550	480	530	670	650
	Placed (Firm)	24,660	25,520	27,990	29,080	29,560
	Placed (Insurance)	1,220	1,380	1,460	1,410	1,380
	Placed (Other)	430	480	510	620	640

A.8 Placed main scheme applicants from Scotland: A level results day

Selected placed routes: difference between cycle and 2016 cycle

Applicant type	Status	2013	2014	2015	2016	2017
Main scheme	Placed (Clearing)	-17%	-28%	-20%	0%	-3%
	Placed (Firm)	-15%	-12%	-4%	0%	2%
	Placed (Insurance)	-14%	-2%	4%	0%	-2%

Note: Percentage changes are not plotted for lines with, on average, fewer than 30 applicants per year. As a result, lines for some, or all, of the states may be missing.

A.9 Main scheme applicants placed through adjustment: A level results day

Placed through adjustment: difference between cycle and 2016 cycle

[Analysis on placed by adjustment available from 18 August 2017]

A.10 Main scheme applicants placed through adjustment: A level results day

Placed through adjustment: applicants at A level results day

[Analysis on placed by adjustment available from 18 August 2017]

A.11 Main scheme applicants placed through adjustment: A level results day

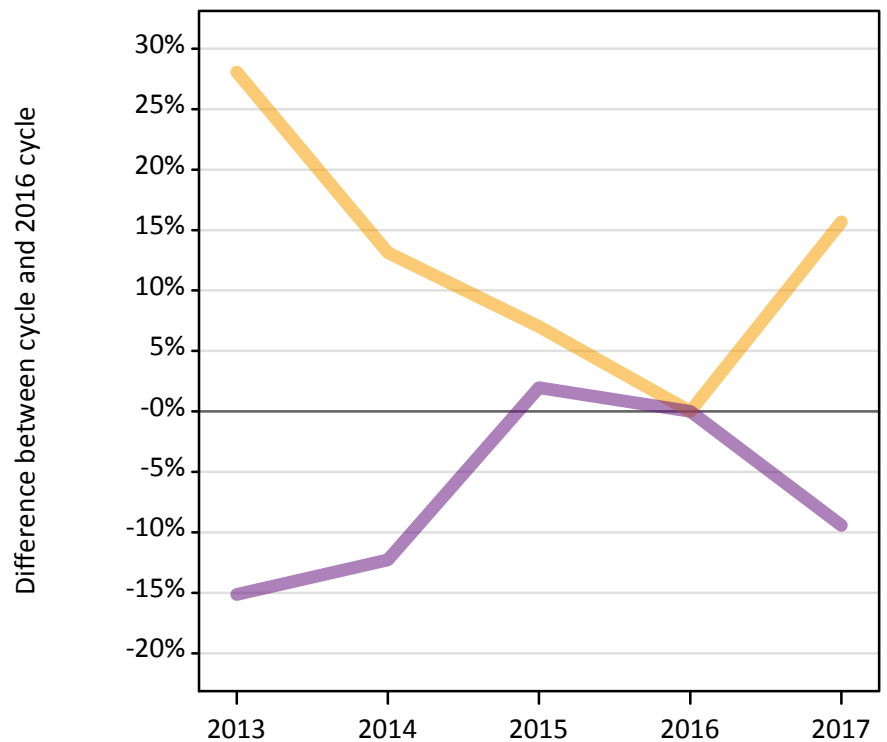
Placed through adjustment: difference between cycle and 2016 cycle

[Analysis on placed by adjustment available from 18 August 2017]

A.12 Main scheme applicants not currently placed from Scotland: A level results day

Applicants in unplaced states: difference between cycle and 2016 cycle

— Holding offer
— Free to be placed in Clearing



A.13 Main scheme applicants not currently placed from Scotland: A level results day

Applicants in unplaced states: applicants at A level results day

Applicant type	Status	2013	2014	2015	2016	2017
Main scheme	Holding offer	3,250	2,870	2,710	2,530	2,930
	Free to be placed in Clearing	12,440	12,850	14,940	14,650	13,270

A.14 Main scheme applicants not currently placed from Scotland: A level results day

Applicants in unplaced states: difference between cycle and 2016 cycle

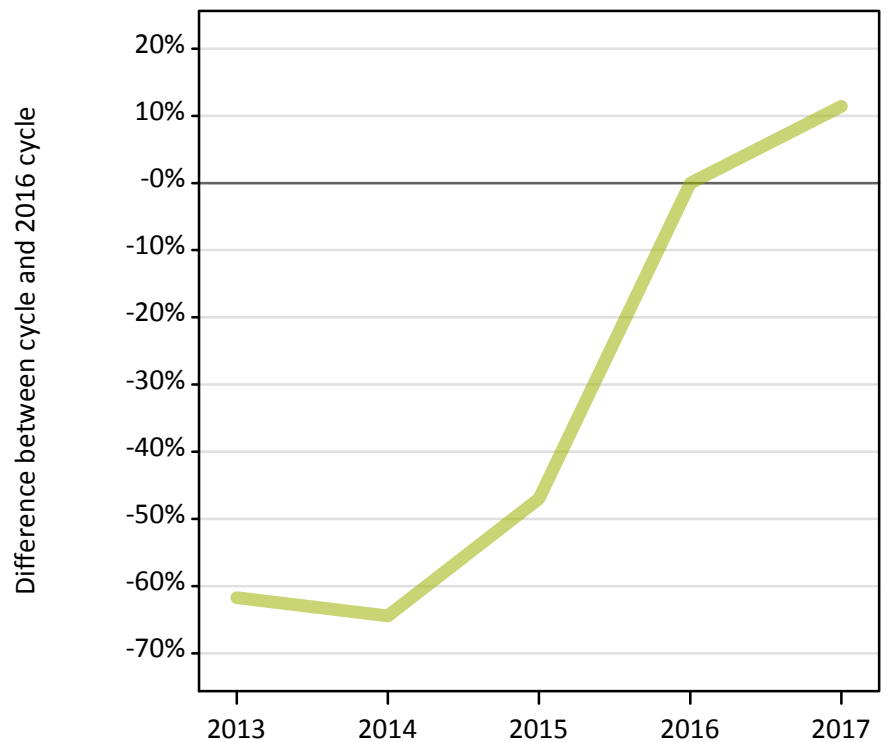
Applicant type	Status	2013	2014	2015	2016	2017
Main scheme	Holding offer	28%	13%	7%	0%	16%
	Free to be placed in Clearing	-15%	-12%	2%	0%	-9%

Note: Percentage changes are not plotted for lines with, on average, fewer than 30 applicants per year. As a result, lines for some, or all, of the states may be missing.

A.15 Direct to Clearing applicants from Scotland: A level results day

Placed (Direct to Clearing): difference between cycle and 2016 cycle

Placed (Direct to Clearing)



A.16 Direct to Clearing applicants from Scotland: A level results day

Direct to Clearing A level results day

Applicant type	Status	2013	2014	2015	2016	2017
Direct to Clearing	Placed (Direct to Clearing)	60	50	80	150	170
	Other (Direct to Clearing)	280	240	340	380	360

A.17 Direct to Clearing applicants from Scotland: A level results day

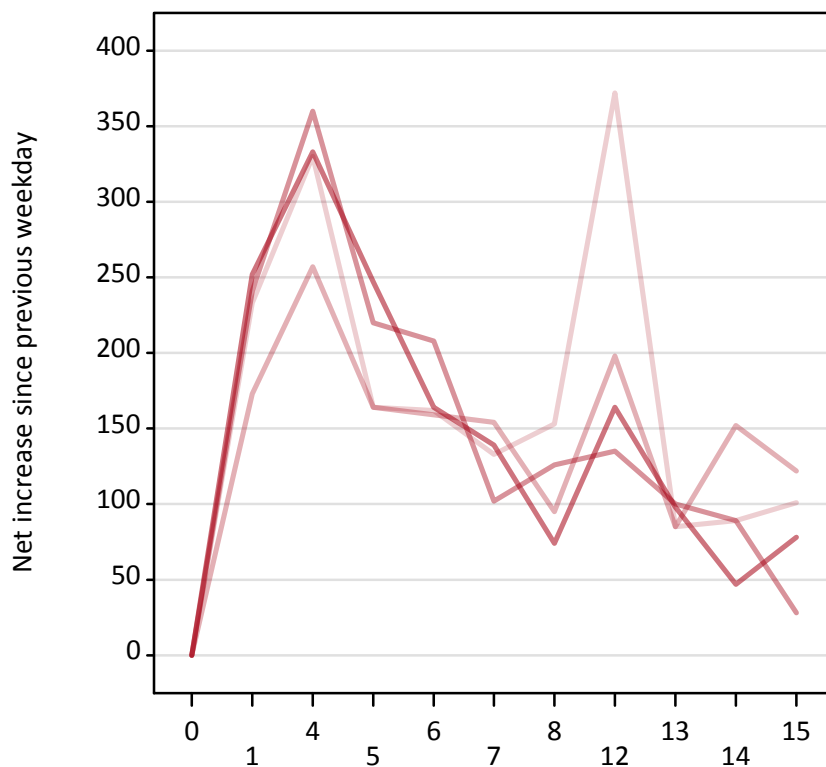
Placed (Direct to Clearing): difference between cycle and 2016 cycle

Applicant type	Status	2013	2014	2015	2016	2017
Direct to Clearing	Placed (Direct to Clearing)	-62%	-64%	-47%	0%	11%

Note: Percentage changes are not plotted for lines with, on average, fewer than 30 applicants per year. As a result, lines for some, or all, of the states may be missing.

A.18 All Placed: Daily net change (from Scotland)

Net increase since previous weekday (2017 cycle up to A level results day)



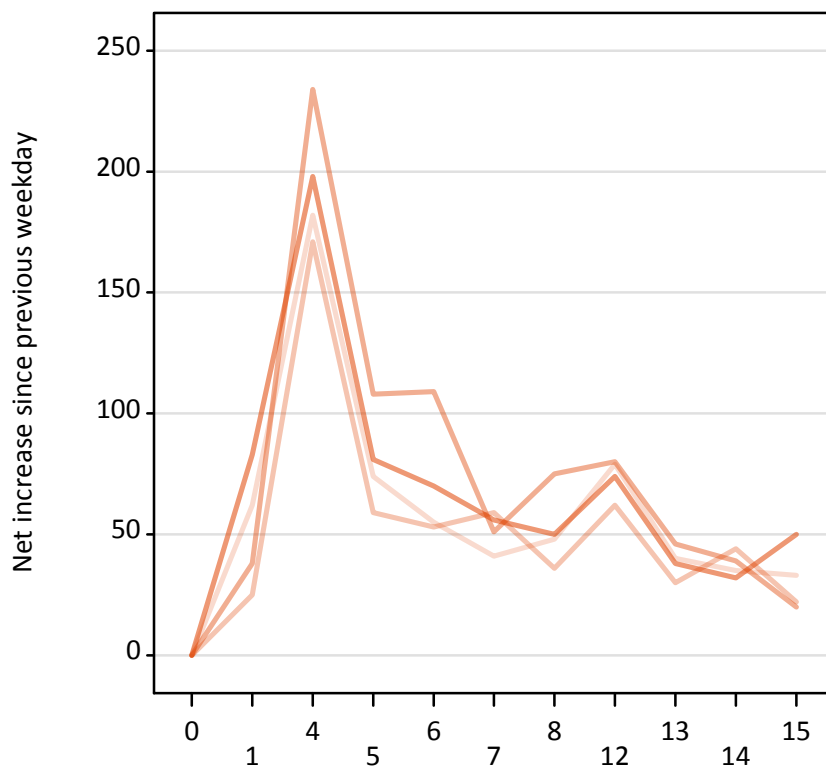
A.19 All Placed: Daily net change (from Scotland)

Net increase since previous weekday (2017 cycle up to A level results day)

Applicant status, days since A level results day		2013	2014	2015	2016	2017
All Placed	0	0	0	0	0	0
	1	230	170	240	250	
	4	330	260	360	330	
	5	160	160	220	250	
	6	160	160	210	160	
	7	130	150	100	140	
	8	150	100	130	70	
	12	370	200	140	160	
	13	90	90	100	100	
	14	90	150	90	50	
	15	100	120	30	80	

A.20 Placed through Clearing only: Daily net change (from Scotland)

Net increase since previous weekday (2017 cycle up to A level results day)



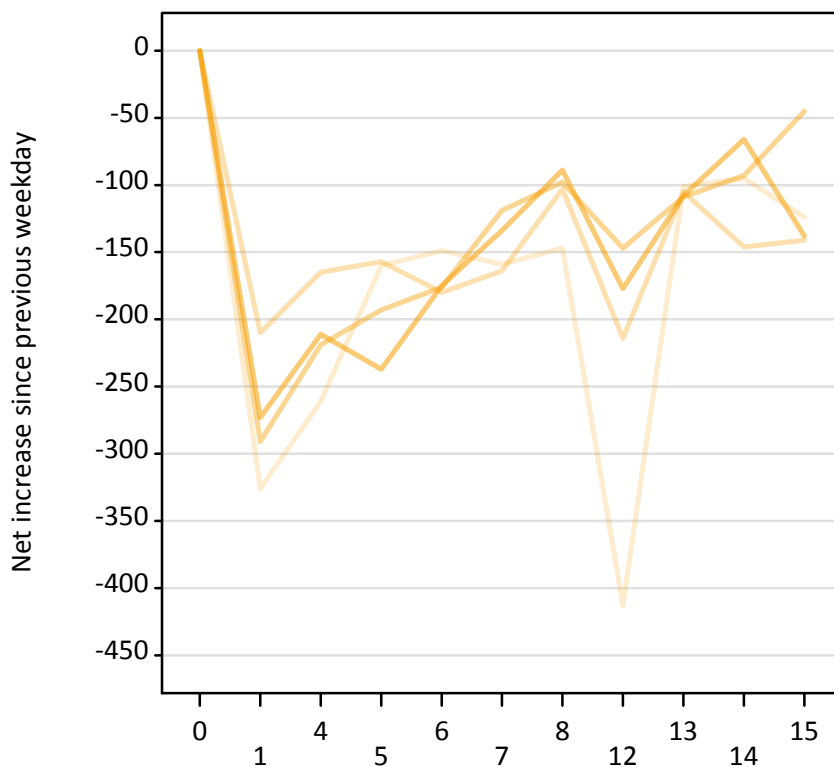
A.21 Placed through Clearing only: Daily net change (from Scotland)

Net increase since previous weekday (2017 cycle up to A level results day)

Applicant status, days since A level results day		2013	2014	2015	2016	2017
Placed through Clearing only	0	0	0	0	0	0
	1	60	30	40	80	
	4	180	170	230	200	
	5	70	60	110	80	
	6	60	50	110	70	
	7	40	60	50	60	
	8	50	40	80	50	
	12	80	60	80	70	
	13	40	30	50	40	
	14	40	40	40	30	
	15	30	20	20	50	

A.22 Holding Offer: Daily net change (from Scotland)

Net increase since previous weekday (2017 cycle up to A level results day)

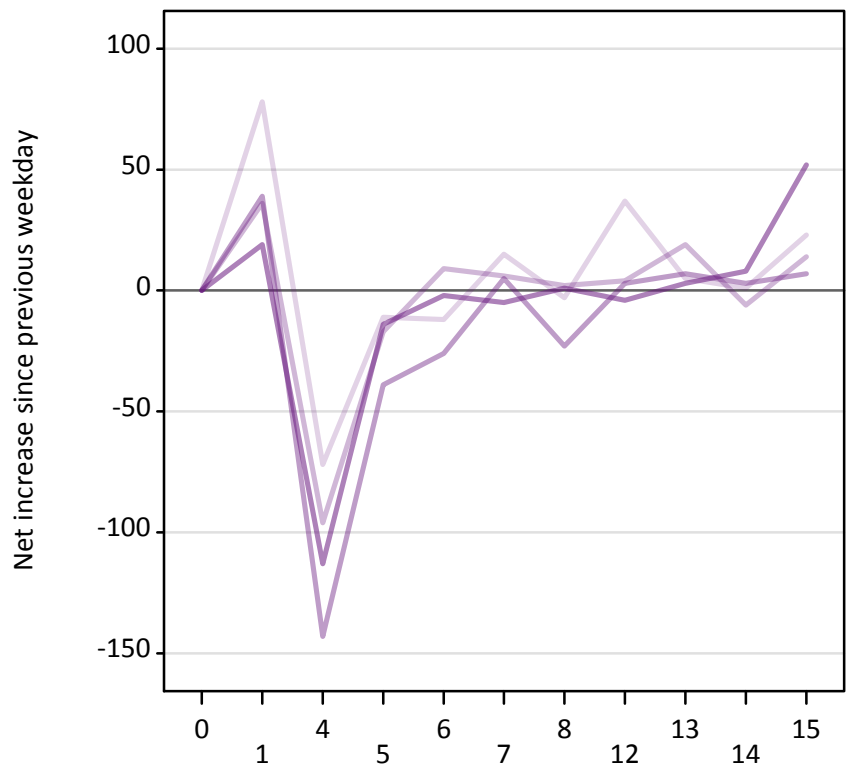


A.23 Holding Offer: Daily net change (from Scotland)

Net increase since previous weekday (2017 cycle up to A level results day)

Applicant status, days since A level results day		2013	2014	2015	2016	2017
Holding Offer	0	0	0	0	0	0
	1	-330	-210	-290	-270	
	4	-260	-170	-220	-210	
	5	-160	-160	-190	-240	
	6	-150	-180	-180	-180	
	7	-160	-160	-120	-130	
	8	-150	-100	-100	-90	
	12	-410	-210	-150	-180	
	13	-100	-110	-110	-110	
	14	-100	-150	-90	-70	
	15	-120	-140	-50	-140	

A.24 Free to be placed in Clearing: Daily net change (from Scotland)
 Net increase since previous weekday (2017 cycle up to A level results day)



A.25 Free to be placed in Clearing: Daily net change (from Scotland)
 Net increase since previous weekday (2017 cycle up to A level results day)

Applicant status, days since A level results day		2013	2014	2015	2016	2017
Free to be placed in Clearing	0	0	0	0	0	0
	1	80	40	40	20	
	4	-70	-100	-140	-110	
	5	-10	-20	-40	-10	
	6	-10	10	-30	0	
	7	20	10	10	-10	
	8	0	0	-20	0	
	12	40	0	0	0	
	13	10	20	10	0	
	14	0	-10	0	10	
	15	20	10	10	50	