

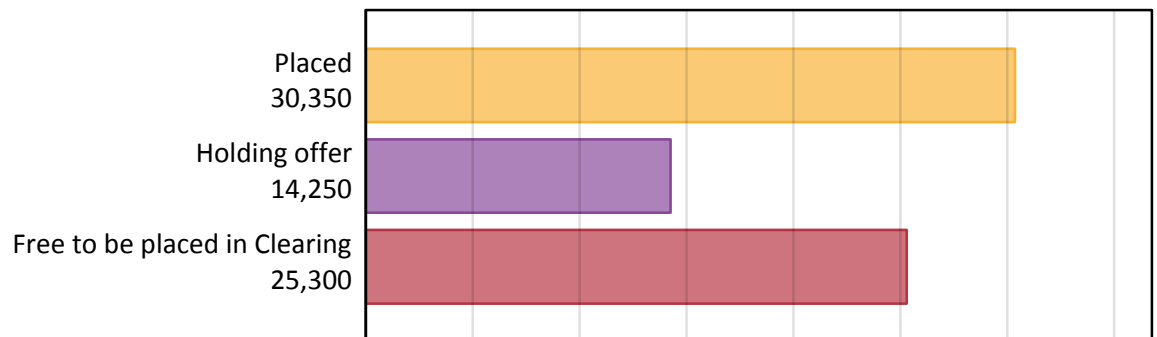
Daily Clearing Analysis: Overview

Analysis at 00:05 on Thursday 17 August 2017 (A level results day)

A.1 Applicants by type and status from outside the EU, 2017 cycle

Applicant type	Status	2017
Main scheme	Placed (Clearing)	870
	Placed (Adjustment)	0
	Placed (Firm)	24,960
	Placed (Insurance)	2,590
	Placed (Other)	1,700
	Holding offer	14,250
	Free to be placed in Clearing	25,300
Direct to Clearing	Placed (Direct to Clearing)	230
	Other (Direct to Clearing)	710
All applicants	Placed	30,350

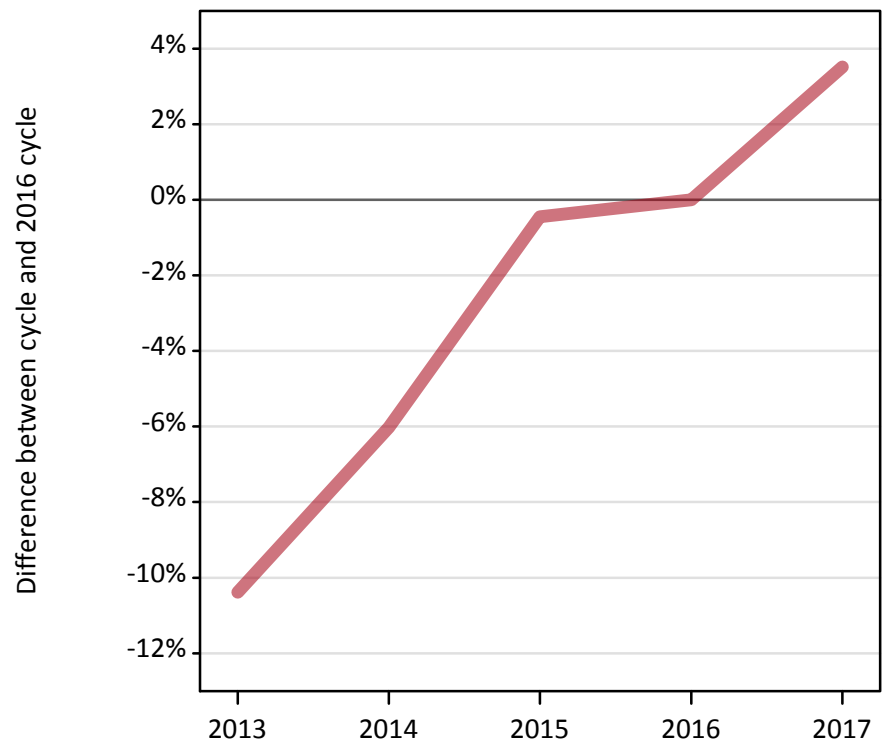
A.2 Summary of applicants who are placed, holding offers or free to be placed in Clearing (outside the EU)



A.3 All placed applicants from outside the EU: A level results day

All placed applicants: difference between cycle and 2016 cycle

Placed



A.4 All placed applicants from outside the EU: A level results day

All placed applicants: applicants at A level results day

Applicant type	Status	2013	2014	2015	2016	2017
All applicants	Placed	26,280	27,560	29,190	29,320	30,350

A.5 All placed applicants from outside the EU: A level results day

All placed applicants: difference between cycle and 2016 cycle

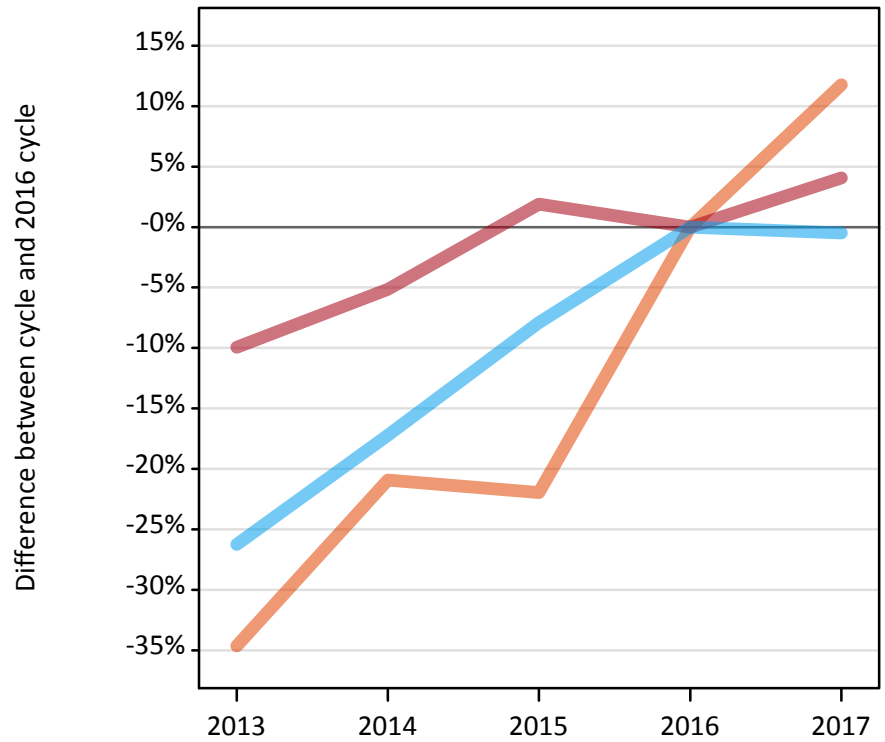
Applicant type	Status	2013	2014	2015	2016	2017
All applicants	Placed	-10%	-6%	-0%	0%	4%

Note: Percentage changes are not plotted for lines with, on average, fewer than 30 applicants per year. As a result, lines for some, or all, of the states may be missing.

A.6 Placed main scheme applicants from outside the EU: A level results day

Selected placed routes: difference between cycle and 2016 cycle

— Placed (Clearing)
— Placed (Firm)
— Placed (Insurance)



A.7 Placed main scheme applicants from outside the EU: A level results day

All Main scheme placed routes (excluding Adjustment): applicants at A level results day

Applicant type	Status	2013	2014	2015	2016	2017
Main scheme	Placed (Clearing)	510	610	600	770	870
	Placed (Firm)	21,600	22,750	24,440	23,980	24,960
	Placed (Insurance)	1,920	2,160	2,400	2,610	2,590
	Placed (Other)	2,070	1,890	1,590	1,700	1,700

A.8 Placed main scheme applicants from outside the EU: A level results day

Selected placed routes: difference between cycle and 2016 cycle

Applicant type	Status	2013	2014	2015	2016	2017
Main scheme	Placed (Clearing)	-35%	-21%	-22%	0%	12%
	Placed (Firm)	-10%	-5%	2%	0%	4%
	Placed (Insurance)	-26%	-17%	-8%	0%	-0%

Note: Percentage changes are not plotted for lines with, on average, fewer than 30 applicants per year. As a result, lines for some, or all, of the states may be missing.

A.9 Main scheme applicants placed through adjustment: A level results day

Placed through adjustment: difference between cycle and 2016 cycle

[Analysis on placed by adjustment available from 18 August 2017]

A.10 Main scheme applicants placed through adjustment: A level results day

Placed through adjustment: applicants at A level results day

[Analysis on placed by adjustment available from 18 August 2017]

A.11 Main scheme applicants placed through adjustment: A level results day

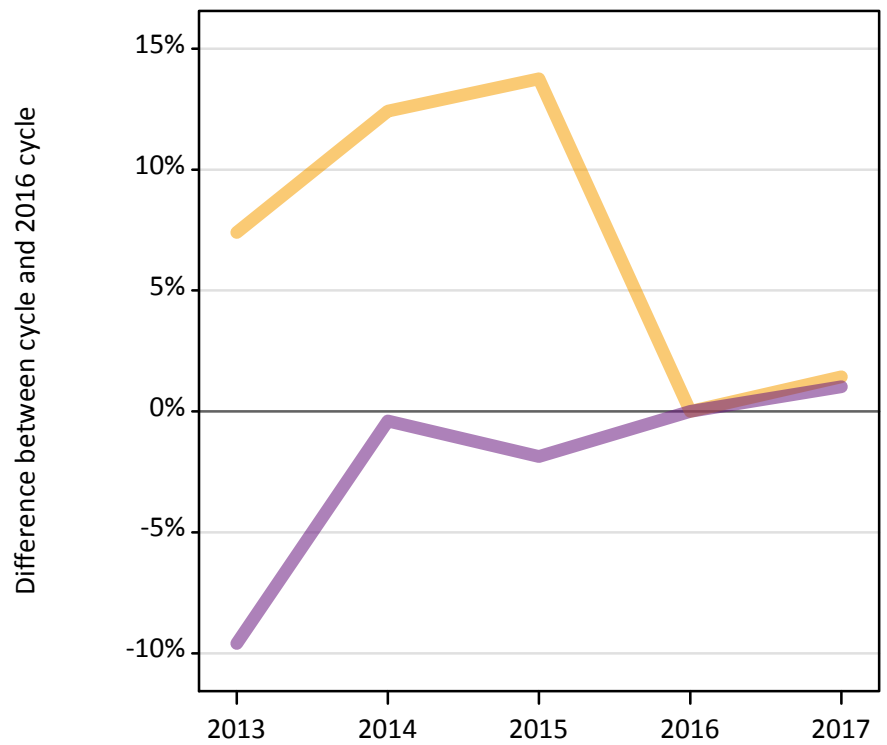
Placed through adjustment: difference between cycle and 2016 cycle

[Analysis on placed by adjustment available from 18 August 2017]

A.12 Main scheme applicants not currently placed from outside the EU: A level results day

Applicants in unplaced states: difference between cycle and 2016 cycle

— Holding offer
— Free to be placed in Clearing



A.13 Main scheme applicants not currently placed from outside the EU: A level results day

Applicants in unplaced states: applicants at A level results day

Applicant type	Status	2013	2014	2015	2016	2017
Main scheme	Holding offer	15,090	15,800	15,990	14,050	14,250
	Free to be placed in Clearing	22,640	24,950	24,580	25,050	25,300

A.14 Main scheme applicants not currently placed from outside the EU: A level results day

Applicants in unplaced states: difference between cycle and 2016 cycle

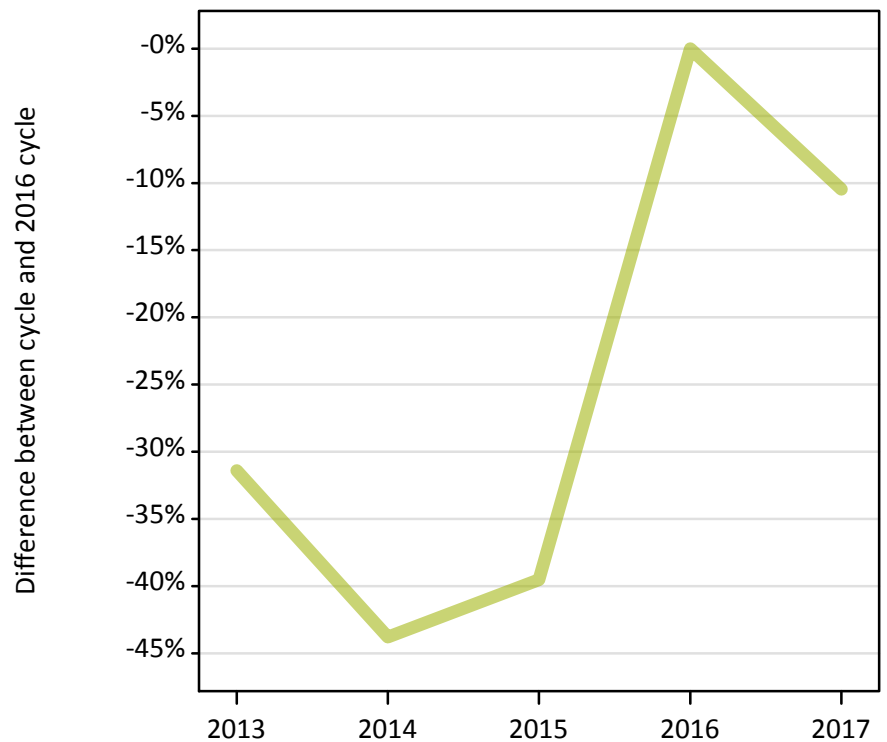
Applicant type	Status	2013	2014	2015	2016	2017
Main scheme	Holding offer	7%	12%	14%	0%	1%
	Free to be placed in Clearing	-10%	-0%	-2%	0%	1%

Note: Percentage changes are not plotted for lines with, on average, fewer than 30 applicants per year. As a result, lines for some, or all, of the states may be missing.

A.15 Direct to Clearing applicants from outside the EU: A level results day

Placed (Direct to Clearing): difference between cycle and 2016 cycle

Placed (Direct to Clearing)



A.16 Direct to Clearing applicants from outside the EU: A level results day

Direct to Clearing A level results day

Applicant type	Status	2013	2014	2015	2016	2017
Direct to Clearing	Placed (Direct to Clearing)	180	150	160	260	230
	Other (Direct to Clearing)	800	640	770	640	710

A.17 Direct to Clearing applicants from outside the EU: A level results day

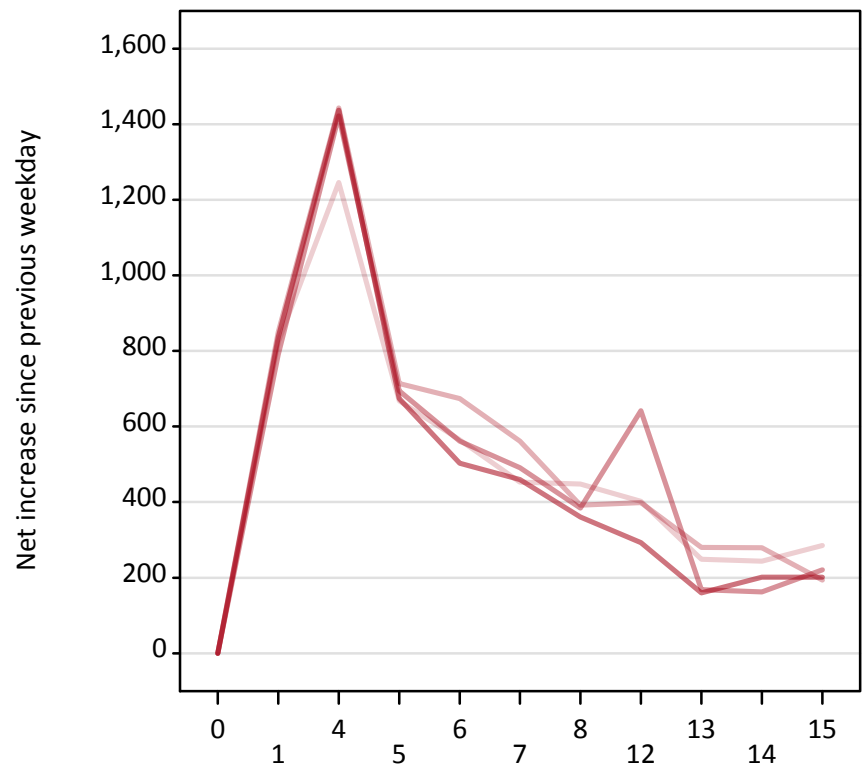
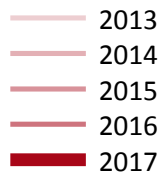
Placed (Direct to Clearing): difference between cycle and 2016 cycle

Applicant type	Status	2013	2014	2015	2016	2017
Direct to Clearing	Placed (Direct to Clearing)	-31%	-44%	-40%	0%	-10%

Note: Percentage changes are not plotted for lines with, on average, fewer than 30 applicants per year. As a result, lines for some, or all, of the states may be missing.

A.18 All Placed: Daily net change (from outside the EU)

Net increase since previous weekday (2017 cycle up to A level results day)



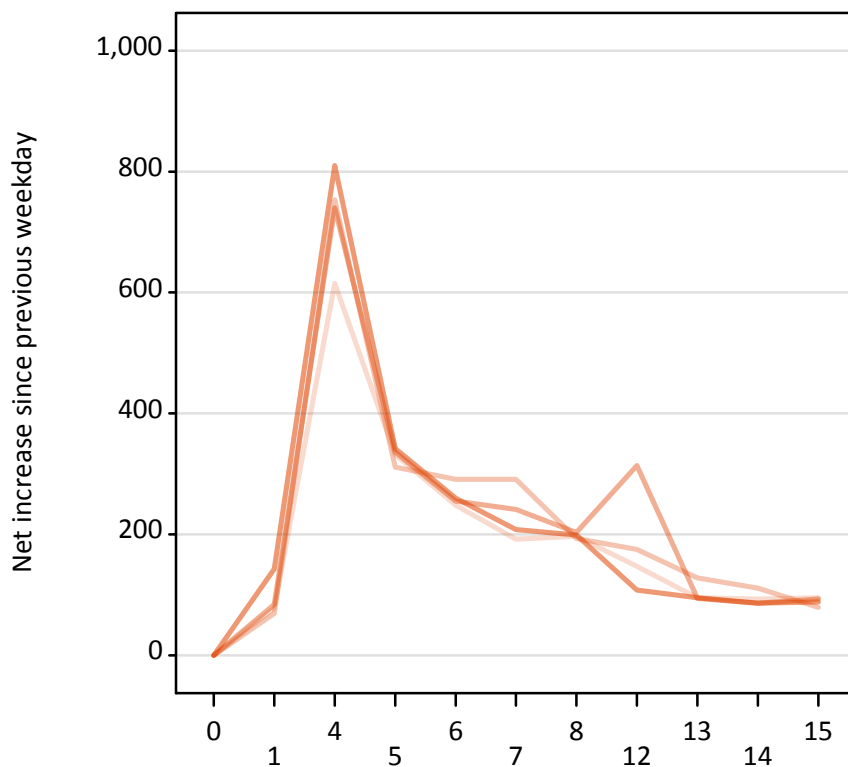
A.19 All Placed: Daily net change (from outside the EU)

Net increase since previous weekday (2017 cycle up to A level results day)

Applicant status, days since A level results day		2013	2014	2015	2016	2017
All Placed	0	0	0	0	0	0
	1	820	850	790	840	
	4	1,250	1,440	1,420	1,440	
	5	670	710	690	670	
	6	570	670	560	500	
	7	450	560	490	460	
	8	450	390	380	360	
	12	400	400	640	290	
	13	250	280	170	160	
	14	240	280	160	200	
	15	290	190	220	200	

A.20 Placed through Clearing only: Daily net change (from outside the EU)

Net increase since previous weekday (2017 cycle up to A level results day)



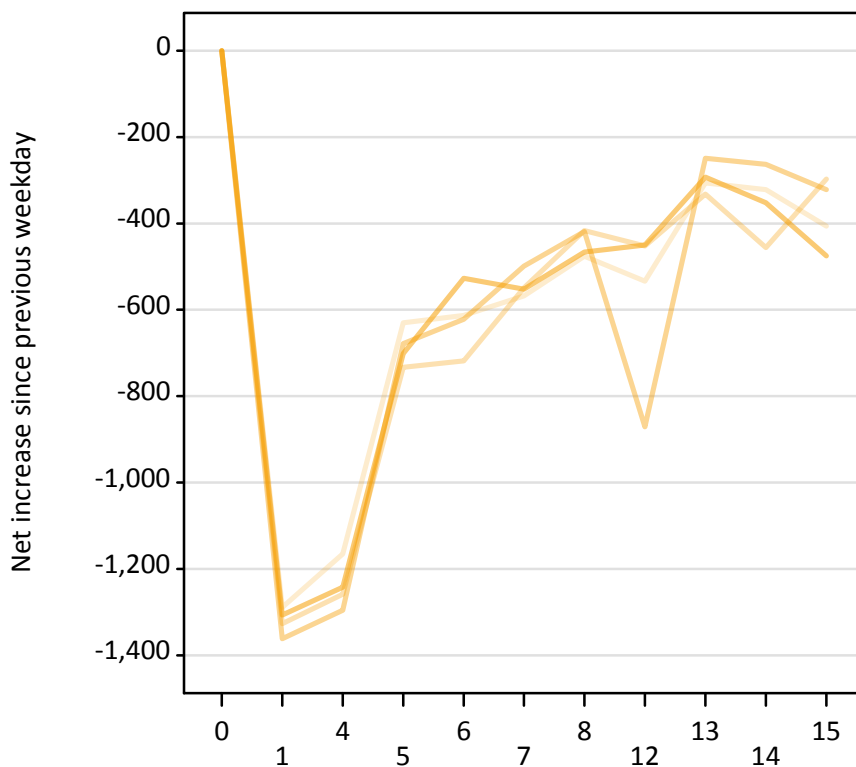
A.21 Placed through Clearing only: Daily net change (from outside the EU)

Net increase since previous weekday (2017 cycle up to A level results day)

Applicant status, days since A level results day		2013	2014	2015	2016	2017
Placed through Clearing only	0	0	0	0	0	0
	1	80	70	80	140	80
	4	620	750	740	810	620
	5	330	310	340	340	330
	6	250	290	260	260	250
	7	190	290	240	210	190
	8	200	190	200	200	200
	12	150	180	310	110	150
	13	100	130	90	100	100
	14	90	110	90	90	90
	15	100	80	90	90	100

A.22 Holding Offer: Daily net change (from outside the EU)

Net increase since previous weekday (2017 cycle up to A level results day)



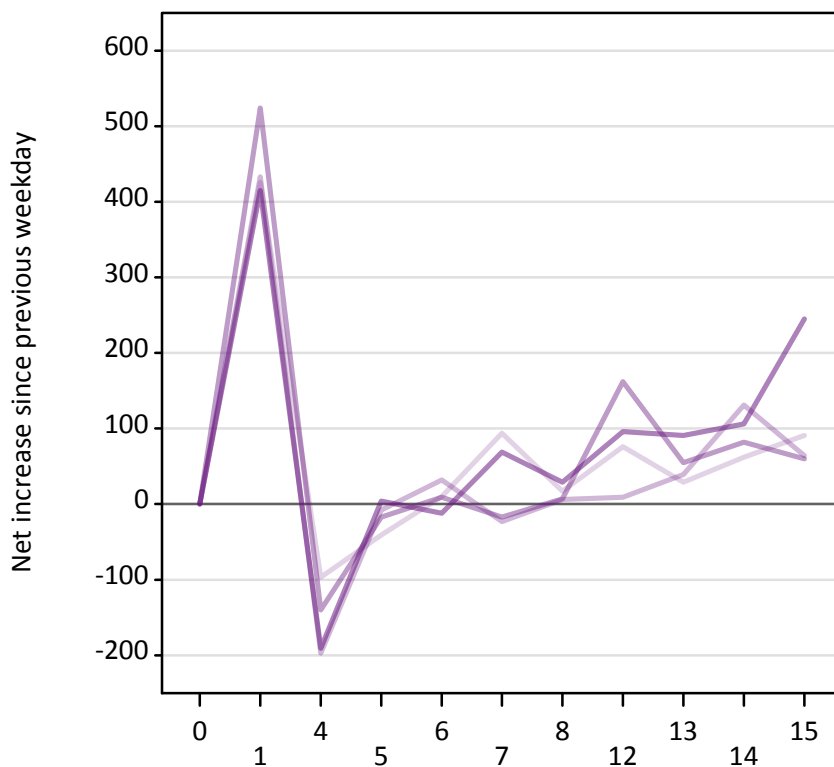
A.23 Holding Offer: Daily net change (from outside the EU)

Net increase since previous weekday (2017 cycle up to A level results day)

Applicant status, days since A level results day		2013	2014	2015	2016	2017
Holding Offer	0	0	0	0	0	0
	1	-1,290	-1,330	-1,360	-1,310	-1,310
	4	-1,170	-1,260	-1,300	-1,240	-1,240
	5	-630	-730	-680	-700	-700
	6	-610	-720	-620	-530	-530
	7	-570	-550	-500	-550	-550
	8	-480	-420	-420	-470	-470
	12	-530	-450	-870	-450	-450
	13	-310	-330	-250	-290	-290
	14	-320	-460	-260	-350	-350
	15	-410	-300	-320	-480	-480

A.24 Free to be placed in Clearing: Daily net change (from outside the EU)

Net increase since previous weekday (2017 cycle up to A level results day)



A.25 Free to be placed in Clearing: Daily net change (from outside the EU)

Net increase since previous weekday (2017 cycle up to A level results day)

Applicant status, days since A level results day		2013	2014	2015	2016	2017
Free to be placed in Clearing	0	0	0	0	0	0
	1	430	430	520	420	
	4	-100	-200	-140	-190	
	5	-40	-10	-20	0	
	6	10	30	10	-10	
	7	90	-20	-20	70	
	8	20	10	10	30	
	12	80	10	160	100	
	13	30	40	60	90	
	14	60	130	80	110	
	15	90	60	60	250	