

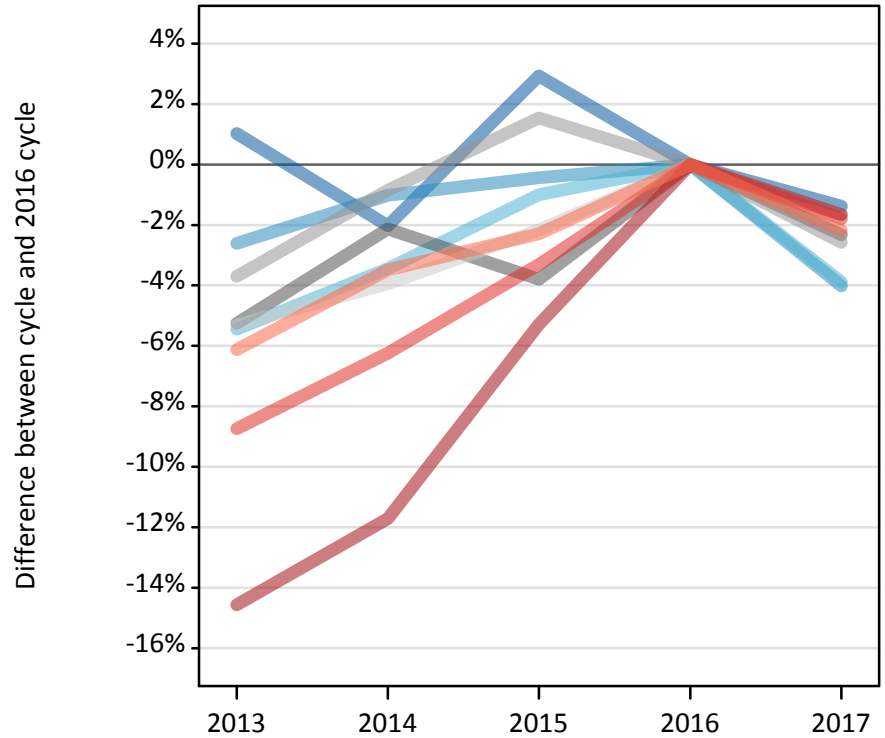
# Daily Clearing Analysis: Region

Analysis at 00:05 on Thursday 17 August 2017 (A level results day)

R.1 Placed applicants by region of domicile: A level results day

Placed applicants: change relative to 2016 cycle totals

- North East
- North West
- Yorkshire and The Humber
- East Midlands
- West Midlands
- East of England
- London
- South East
- South West



R.2 Placed applicants by region of domicile: A level results day

Applicant Status	Domicile	2013	2014	2015	2016	2017
Placed	North East	13,190	12,790	13,440	13,060	12,880
	North West	39,250	39,890	40,130	40,310	38,690
	Yorkshire and The Humber	27,050	27,630	28,320	28,610	27,500
	East Midlands	22,880	23,630	23,230	24,150	23,590
	West Midlands	30,810	31,720	32,480	31,990	31,170
	East of England	30,600	31,040	31,620	32,320	31,780
	London	47,910	49,510	53,110	56,070	55,150
	South East	46,920	48,210	49,710	51,410	50,490
	South West	27,470	28,240	28,590	29,260	28,620
	(England total)	286,070	292,650	300,630	307,170	299,850
	Scotland	26,910	27,910	30,570	31,930	32,390
	Northern Ireland	11,280	11,110	11,260	12,000	11,520
	Wales	15,240	15,980	16,220	16,630	16,110
	UK	339,500	347,650	358,680	367,730	359,860

### R.3 Placed applicants by region of domicile: A level results day

Placed applicants: change relative to 2016 cycle totals

Applicant Status	Domicile	2013	2014	2015	2016	2017
Placed	North East	1%	-2%	3%	0%	-1%
	North West	-3%	-1%	-0%	0%	-4%
	Yorkshire and The Humber	-5%	-3%	-1%	0%	-4%
	East Midlands	-5%	-2%	-4%	0%	-2%
	West Midlands	-4%	-1%	2%	0%	-3%
	East of England	-5%	-4%	-2%	0%	-2%
	London	-15%	-12%	-5%	0%	-2%
	South East	-9%	-6%	-3%	0%	-2%
	South West	-6%	-3%	-2%	0%	-2%
	(England total)	-7%	-5%	-2%	0%	-2%
	Scotland	-16%	-13%	-4%	0%	1%
	Northern Ireland	-6%	-7%	-6%	0%	-4%
	Wales	-8%	-4%	-2%	0%	-3%
	UK	-8%	-5%	-2%	0%	-2%

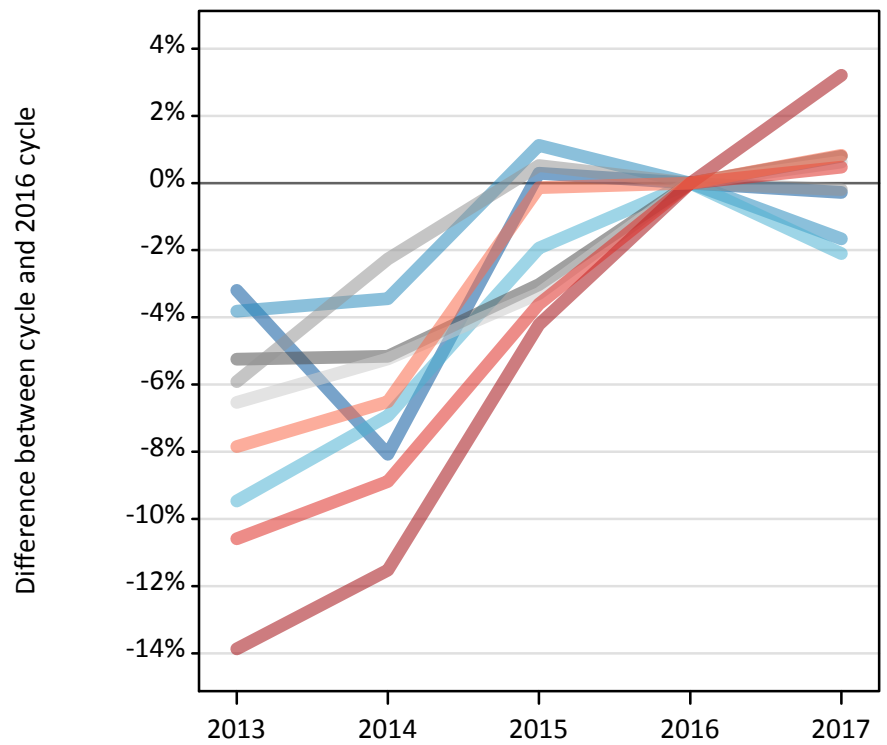
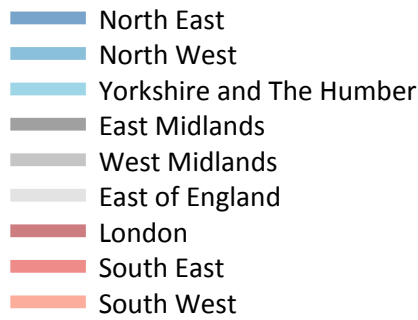
### R.4 Placed applicants by region of domicile: A level results day

Placed applicants: absolute change relative to 2016 cycle totals

Applicant Status	Domicile	2013	2014	2015	2016	2017
Placed	North East	130	-270	380	0	-180
	North West	-1,050	-410	-180	0	-1,620
	Yorkshire and The Humber	-1,560	-990	-290	0	-1,110
	East Midlands	-1,270	-520	-920	0	-560
	West Midlands	-1,180	-270	490	0	-820
	East of England	-1,720	-1,270	-700	0	-530
	London	-8,170	-6,570	-2,970	0	-930
	South East	-4,490	-3,210	-1,700	0	-920
	South West	-1,790	-1,020	-670	0	-640
	(England total)	-21,100	-14,520	-6,540	0	-7,320
	Scotland	-5,010	-4,020	-1,360	0	460
	Northern Ireland	-720	-890	-740	0	-490
	Wales	-1,390	-640	-410	0	-520
	UK	-28,220	-20,070	-9,050	0	-7,860

### R.5 Placed 18 year old applicants by region of domicile: A level results day

Placed 18 year old applicants: change relative to 2016 cycle totals



### R.6 Placed 18 year old applicants by region of domicile: A level results day

Applicant Status	Domicile	2013	2014	2015	2016	2017
Placed	North East	6,910	6,570	7,160	7,140	7,120
	North West	21,840	21,920	22,960	22,710	22,330
	Yorkshire and The Humber	14,910	15,330	16,150	16,470	16,130
	East Midlands	12,900	12,920	13,210	13,620	13,730
	West Midlands	16,690	17,340	17,830	17,740	17,700
	East of England	18,090	18,340	18,710	19,350	19,470
	London	24,660	25,330	27,420	28,630	29,550
	South East	26,810	27,320	28,900	29,980	30,120
	South West	13,880	14,080	15,040	15,060	15,180
	(England total)	156,690	159,140	167,390	170,700	171,330
	Scotland	13,740	14,070	14,130	14,370	14,270
	Northern Ireland	6,930	6,620	6,740	6,960	6,840
	Wales	8,310	8,640	8,980	9,200	8,820
	UK	185,670	188,460	197,240	201,230	201,270

## R.7 Placed 18 year old applicants by region of domicile: A level results day

Placed 18 year old applicants: change relative to 2016 cycle totals

Applicant Status	Domicile	2013	2014	2015	2016	2017
Placed	North East	-3%	-8%	0%	0%	-0%
	North West	-4%	-3%	1%	0%	-2%
	Yorkshire and The Humber	-9%	-7%	-2%	0%	-2%
	East Midlands	-5%	-5%	-3%	0%	1%
	West Midlands	-6%	-2%	1%	0%	-0%
	East of England	-7%	-5%	-3%	0%	1%
	London	-14%	-12%	-4%	0%	3%
	South East	-11%	-9%	-4%	0%	0%
	South West	-8%	-7%	-0%	0%	1%
	(England total)	-8%	-7%	-2%	0%	0%
	Scotland	-4%	-2%	-2%	0%	-1%
	Northern Ireland	-0%	-5%	-3%	0%	-2%
	Wales	-10%	-6%	-2%	0%	-4%
	UK	-8%	-6%	-2%	0%	0%

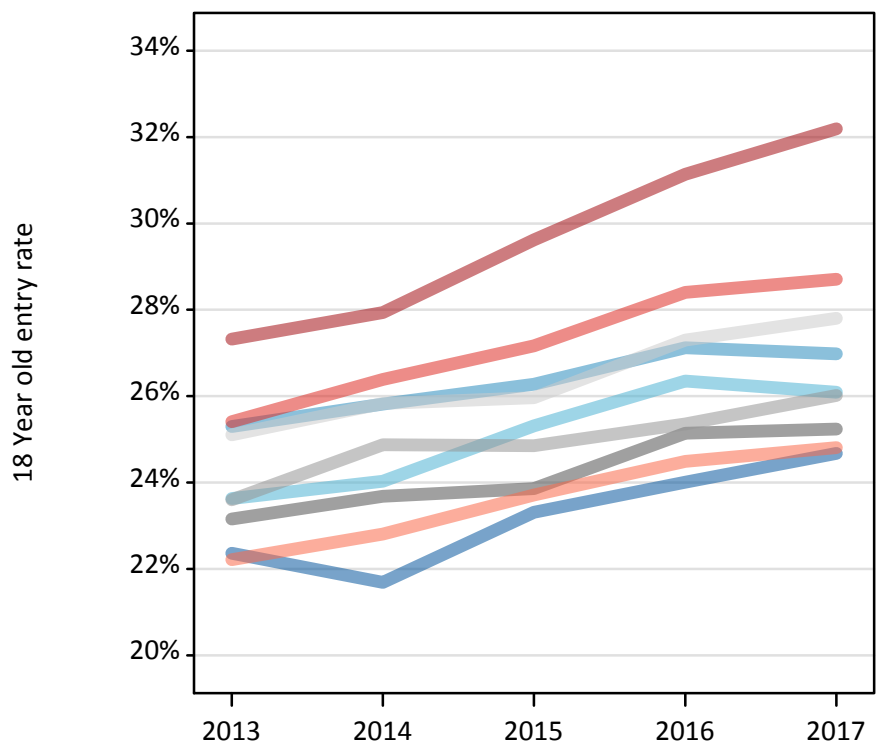
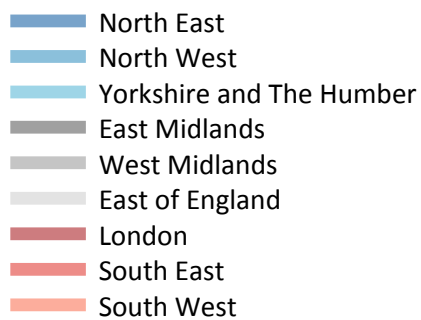
## R.8 Placed 18 year old applicants by region of domicile: A level results day

Placed 18 year old applicants: absolute change relative to 2016 cycle totals

Applicant Status	Domicile	2013	2014	2015	2016	2017
Placed	North East	-230	-580	20	0	-20
	North West	-870	-780	260	0	-380
	Yorkshire and The Humber	-1,560	-1,140	-320	0	-350
	East Midlands	-710	-700	-410	0	110
	West Midlands	-1,050	-400	90	0	-40
	East of England	-1,260	-1,010	-640	0	120
	London	-3,970	-3,300	-1,210	0	920
	South East	-3,180	-2,660	-1,080	0	140
	South West	-1,180	-980	-20	0	120
	(England total)	-14,010	-11,560	-3,310	0	640
	Scotland	-630	-300	-230	0	-100
	Northern Ireland	-30	-340	-230	0	-120
	Wales	-890	-560	-220	0	-380
	UK	-15,560	-12,760	-3,990	0	40

### R.9 Placed 18 year old applicants by region of domicile: A level results day

Placed 18 year old applicants: entry rate



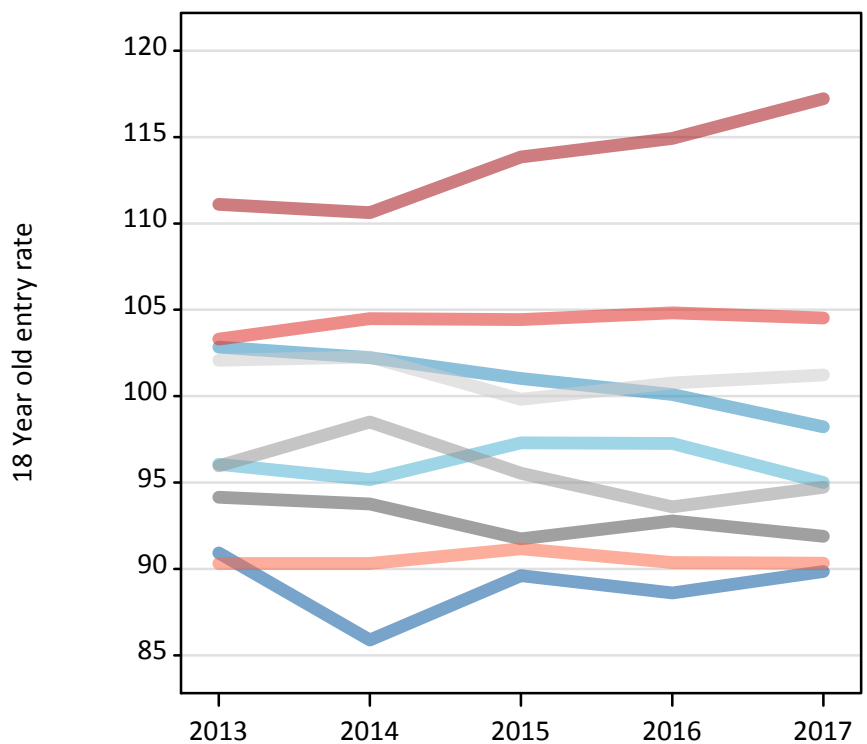
### R.10 Placed 18 year old applicants by region of domicile: A level results day

Placed 18 year old applicants: entry rate

Applicant Status	Domicile	2013	2014	2015	2016	2017
Placed	North East	22.4%	21.7%	23.3%	24.0%	24.7%
	North West	25.3%	25.8%	26.3%	27.1%	27.0%
	Yorkshire and The Humber	23.6%	24.0%	25.3%	26.4%	26.1%
	East Midlands	23.2%	23.7%	23.9%	25.1%	25.2%
	West Midlands	23.6%	24.9%	24.9%	25.4%	26.0%
	East of England	25.1%	25.8%	26.0%	27.3%	27.8%
	London	27.3%	27.9%	29.6%	31.1%	32.2%
	South East	25.4%	26.4%	27.2%	28.4%	28.7%
	South West	22.2%	22.8%	23.7%	24.5%	24.8%
	(England total)	24.6%	25.3%	26.0%	27.1%	27.5%
	Scotland	22.3%	23.0%	23.5%	24.4%	24.9%
	Northern Ireland	28.3%	27.3%	27.1%	28.5%	28.3%
	Wales	22.0%	23.0%	23.8%	25.3%	24.8%
	UK	24.4%	25.0%	25.7%	26.8%	27.2%

### R.11 Placed 18 year old applicants by region of domicile: A level results day

Placed 18 year old applicants: entry rates (indexed to 100 = England)



### R.12 Placed 18 year old applicants by region of domicile: A level results day

Placed 18 year old applicants: entry rate (indexed to 100 = England)

Applicant Status	Domicile	2013	2014	2015	2016	2017
Placed	North East	91	86	90	89	90
	North West	103	102	101	100	98
	Yorkshire and The Humber	96	95	97	97	95
	East Midlands	94	94	92	93	92
	West Midlands	96	98	96	94	95
	East of England	102	102	100	101	101
	London	111	111	114	115	117
	South East	103	104	104	105	105
	South West	90	90	91	90	90
	(England total)	100	100	100	100	100