

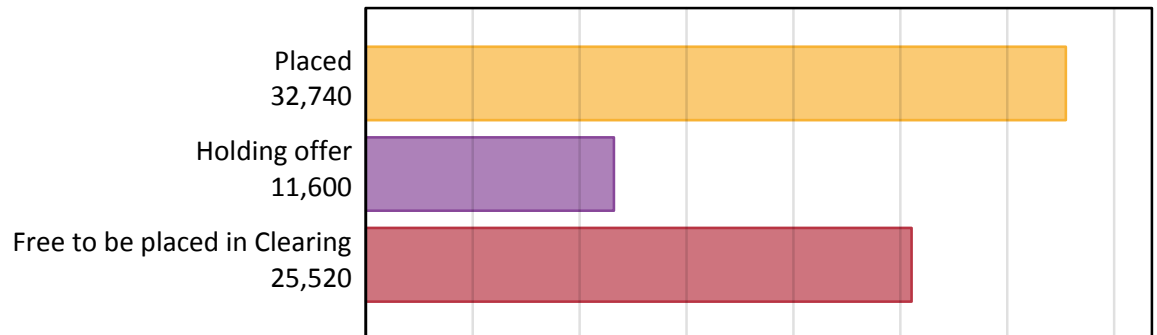
Daily Clearing Analysis: Overview

Analysis at 00:05 on Monday 21 August 2017 (4 days after A level results day)

A.1 Applicants by type and status from outside the EU, 2017 cycle

Applicant type	Status	2017
Main scheme	Placed (Clearing)	1,800
	Placed (Adjustment)	40
	Placed (Firm)	25,730
	Placed (Insurance)	3,080
	Placed (Other)	1,780
	Holding offer	11,600
	Free to be placed in Clearing	25,520
Direct to Clearing	Placed (Direct to Clearing)	310
	Other (Direct to Clearing)	760
All applicants	Placed	32,740

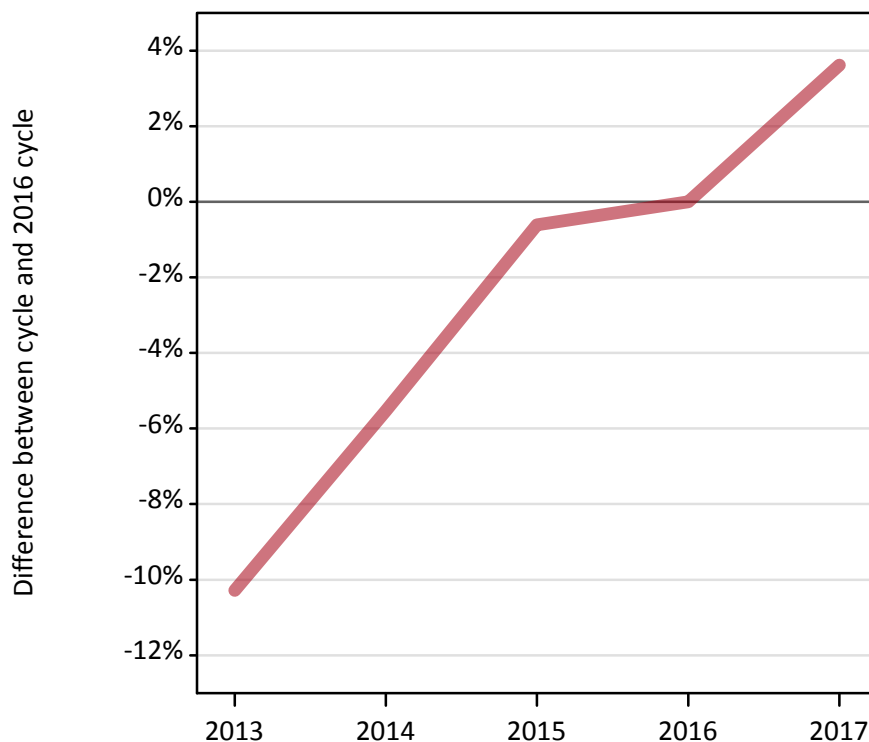
A.2 Summary of applicants who are placed, holding offers or free to be placed in Clearing (outside the EU)



A.3 All placed applicants from outside the EU: 4 days after A level results day

All placed applicants: difference between cycle and 2016 cycle

Placed



A.4 All placed applicants from outside the EU: 4 days after A level results day

All placed applicants: applicants at 4 days after A level results day

Applicant type	Status	2013	2014	2015	2016	2017
All applicants	Placed	28,350	29,850	31,400	31,600	32,740

A.5 All placed applicants from outside the EU: 4 days after A level results day

All placed applicants: difference between cycle and 2016 cycle

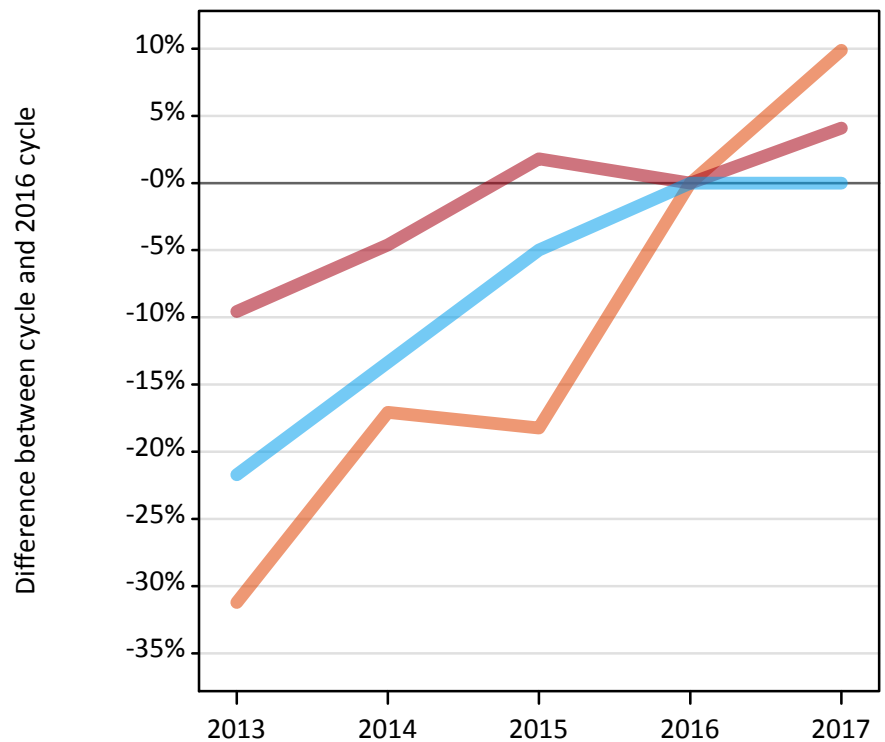
Applicant type	Status	2013	2014	2015	2016	2017
All applicants	Placed	-10%	-6%	-1%	0%	4%

Note: Percentage changes are not plotted for lines with, on average, fewer than 30 applicants per year. As a result, lines for some, or all, of the states may be missing.

A.6 Placed main scheme applicants from outside the EU: 4 days after A level results day

Selected placed routes: difference between cycle and 2016 cycle

- Placed (Clearing)
- Placed (Firm)
- Placed (Insurance)



A.7 Placed main scheme applicants from outside the EU: 4 days after A level results day

All Main scheme placed routes (excluding Adjustment): applicants at 4 days after A level results day

Applicant type	Status	2013	2014	2015	2016	2017
Main scheme	Placed (Clearing)	1,130	1,360	1,340	1,640	1,800
	Placed (Firm)	22,360	23,580	25,170	24,720	25,730
	Placed (Insurance)	2,410	2,670	2,930	3,080	3,080
	Placed (Other)	2,170	1,960	1,680	1,770	1,780

A.8 Placed main scheme applicants from outside the EU: 4 days after A level results day

Selected placed routes: difference between cycle and 2016 cycle

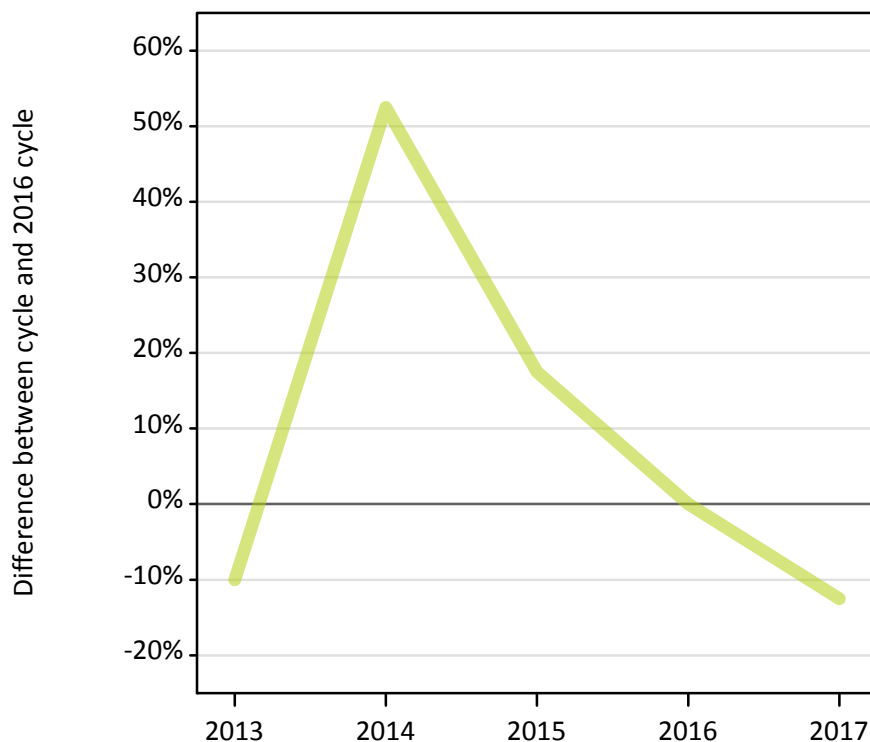
Applicant type	Status	2013	2014	2015	2016	2017
Main scheme	Placed (Clearing)	-31%	-17%	-18%	0%	10%
	Placed (Firm)	-10%	-5%	2%	0%	4%
	Placed (Insurance)	-22%	-13%	-5%	0%	0%

Note: Percentage changes are not plotted for lines with, on average, fewer than 30 applicants per year. As a result, lines for some, or all, of the states may be missing.

A.9 Main scheme applicants placed through adjustment: 4 days after A level results day

Placed through adjustment: difference between cycle and 2016 cycle

Placed (Adjustment)



A.10 Main scheme applicants placed through adjustment: 4 days after A level results day

Placed through adjustment: applicants at 4 days after A level results day

Applicant type	Status	2013	2014	2015	2016	2017
Main scheme	Placed (Adjustment)	40	60	50	40	40

A.11 Main scheme applicants placed through adjustment: 4 days after A level results day

Placed through adjustment: difference between cycle and 2016 cycle

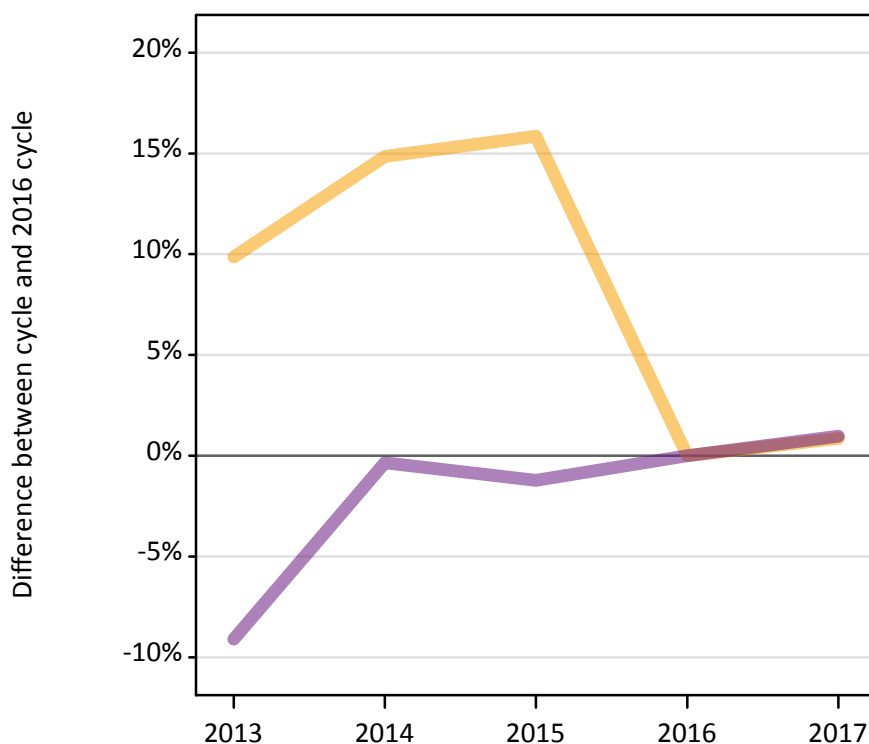
Applicant type	Status	2013	2014	2015	2016	2017
Main scheme	Placed (Adjustment)	-10%	53%	18%	0%	-13%

Note: Percentage changes are not plotted for lines with, on average, fewer than 30 applicants per year. As a result, lines for some, or all, of the states may be missing.

A.12 Main scheme applicants not currently placed from outside the EU: 4 days after A level results day

Applicants in unplaced states: difference between cycle and 2016 cycle

— Holding offer
— Free to be placed in Clearing



A.13 Main scheme applicants not currently placed from outside the EU: 4 days after A level results day

Applicants in unplaced states: applicants at 4 days after A level results day

Applicant type	Status	2013	2014	2015	2016	2017
Main scheme	Holding offer	12,640	13,210	13,330	11,500	11,600
	Free to be placed in Clearing	22,970	25,190	24,960	25,270	25,520

A.14 Main scheme applicants not currently placed from outside the EU: 4 days after A level results day

Applicants in unplaced states: difference between cycle and 2016 cycle

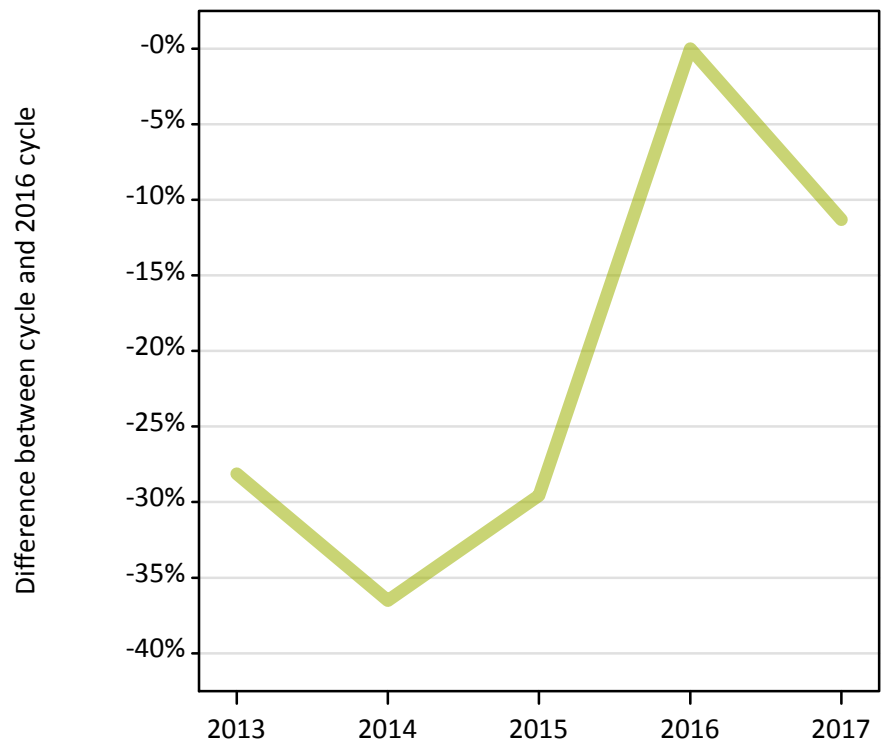
Applicant type	Status	2013	2014	2015	2016	2017
Main scheme	Holding offer	10%	15%	16%	0%	1%
	Free to be placed in Clearing	-9%	-0%	-1%	0%	1%

Note: Percentage changes are not plotted for lines with, on average, fewer than 30 applicants per year. As a result, lines for some, or all, of the states may be missing.

A.15 Direct to Clearing applicants from outside the EU: 4 days after A level results day

Placed (Direct to Clearing): difference between cycle and 2016 cycle

Placed (Direct to Clearing)



A.16 Direct to Clearing applicants from outside the EU: 4 days after A level results day

Direct to Clearing 4 days after A level results day

Applicant type	Status	2013	2014	2015	2016	2017
Direct to Clearing	Placed (Direct to Clearing)	250	220	240	350	310
	Other (Direct to Clearing)	850	680	810	670	760

A.17 Direct to Clearing applicants from outside the EU: 4 days after A level results day

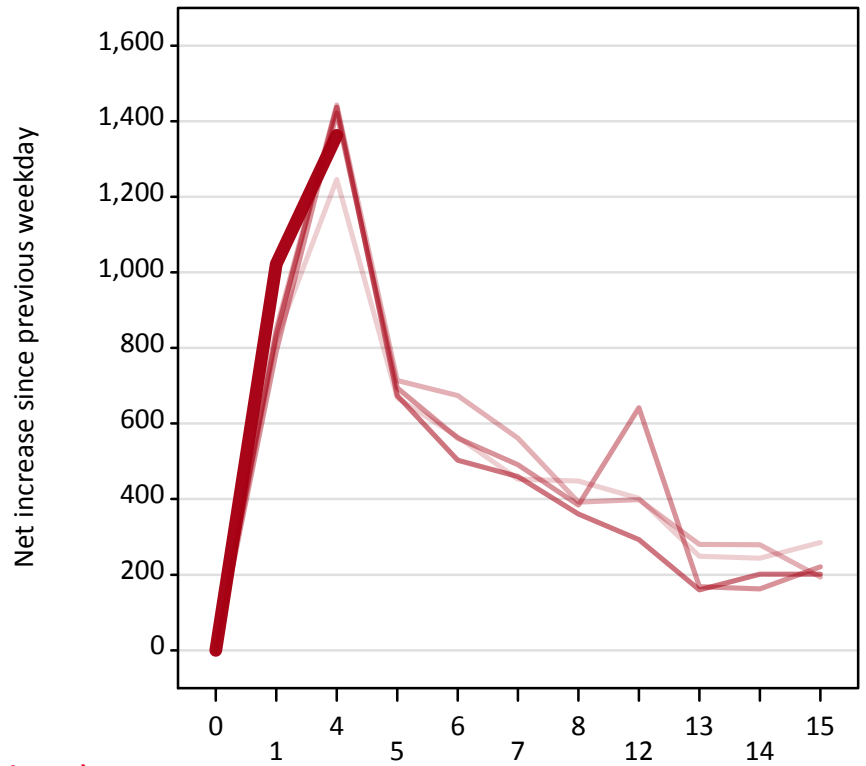
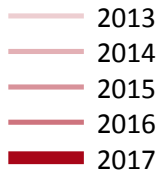
Placed (Direct to Clearing): difference between cycle and 2016 cycle

Applicant type	Status	2013	2014	2015	2016	2017
Direct to Clearing	Placed (Direct to Clearing)	-28%	-37%	-30%	0%	-11%

Note: Percentage changes are not plotted for lines with, on average, fewer than 30 applicants per year. As a result, lines for some, or all, of the states may be missing.

A.18 All Placed: Daily net change (from outside the EU)

Net increase since previous weekday (2017 cycle up to 4 days after A level results day)



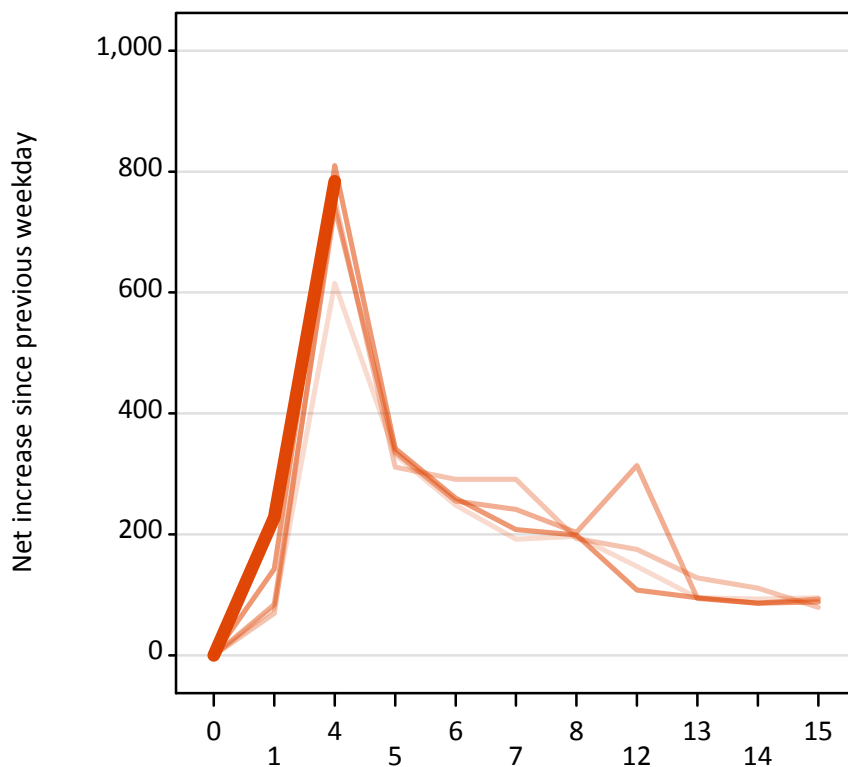
A.19 All Placed: Daily net change (from outside the EU)

Net increase since previous weekday (2017 cycle up to 4 days after A level results day)

Applicant status, days since A level results day		2013	2014	2015	2016	2017
All Placed	0	0	0	0	0	0
	1	820	850	790	840	1,020
	4	1,250	1,440	1,420	1,440	1,360
	5	670	710	690	670	
	6	570	670	560	500	
	7	450	560	490	460	
	8	450	390	380	360	
	12	400	400	640	290	
	13	250	280	170	160	
	14	240	280	160	200	
	15	290	190	220	200	

A.20 Placed through Clearing only: Daily net change (from outside the EU)

Net increase since previous weekday (2017 cycle up to 4 days after A level results day)



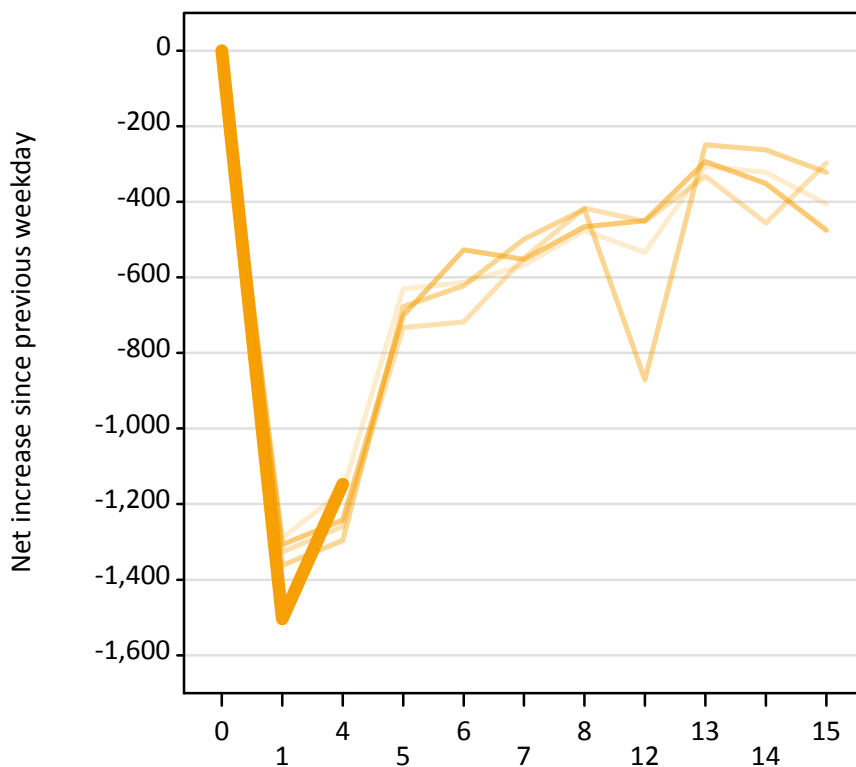
A.21 Placed through Clearing only: Daily net change (from outside the EU)

Net increase since previous weekday (2017 cycle up to 4 days after A level results day)

Applicant status, days since A level results day		2013	2014	2015	2016	2017
Placed through Clearing only	0	0	0	0	0	0
	1	80	70	80	140	230
	4	620	750	740	810	780
	5	330	310	340	340	
	6	250	290	260	260	
	7	190	290	240	210	
	8	200	190	200	200	
	12	150	180	310	110	
	13	100	130	90	100	
	14	90	110	90	90	
	15	100	80	90	90	

A.22 Holding Offer: Daily net change (from outside the EU)

Net increase since previous weekday (2017 cycle up to 4 days after A level results day)



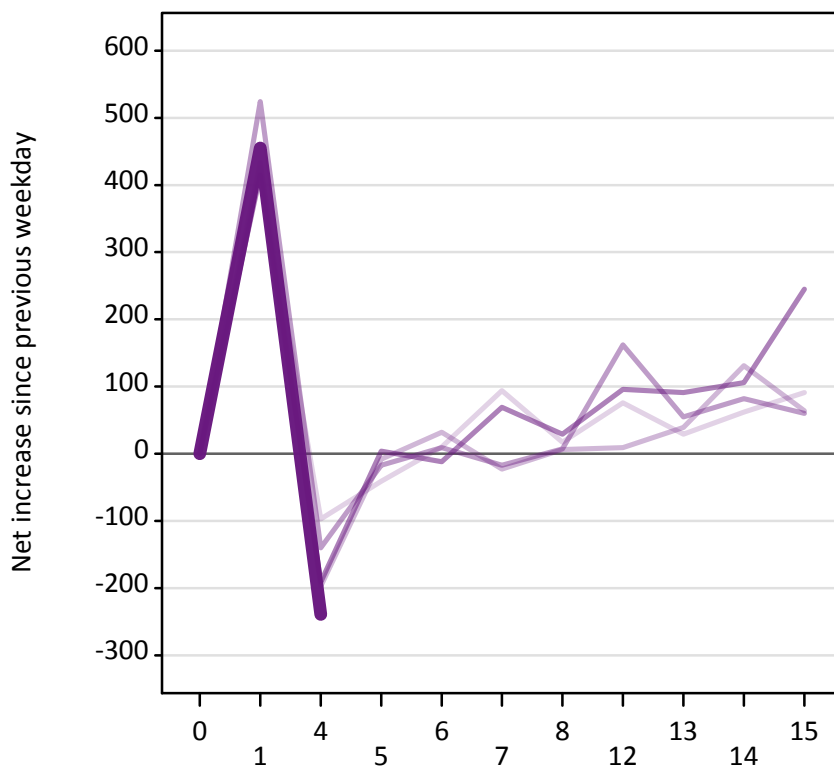
A.23 Holding Offer: Daily net change (from outside the EU)

Net increase since previous weekday (2017 cycle up to 4 days after A level results day)

Applicant status, days since A level results day		2013	2014	2015	2016	2017
Holding Offer	0	0	0	0	0	0
	1	-1,290	-1,330	-1,360	-1,310	-1,500
	4	-1,170	-1,260	-1,300	-1,240	-1,150
	5	-630	-730	-680	-700	
	6	-610	-720	-620	-530	
	7	-570	-550	-500	-550	
	8	-480	-420	-420	-470	
	12	-530	-450	-870	-450	
	13	-310	-330	-250	-290	
	14	-320	-460	-260	-350	
	15	-410	-300	-320	-480	

A.24 Free to be placed in Clearing: Daily net change (from outside the EU)

Net increase since previous weekday (2017 cycle up to 4 days after A level results day)



A.25 Free to be placed in Clearing: Daily net change (from outside the EU)

Net increase since previous weekday (2017 cycle up to 4 days after A level results day)

Applicant status, days since A level results day		2013	2014	2015	2016	2017
Free to be placed in Clearing	0	0	0	0	0	0
	1	430	430	520	420	460
	4	-100	-200	-140	-190	-240
	5	-40	-10	-20	0	-10
	6	10	30	10	-10	10
	7	90	-20	-20	70	60
	8	20	10	10	30	20
	12	80	10	160	100	80
	13	30	40	60	90	40
	14	60	130	80	110	60
	15	90	60	60	250	90