

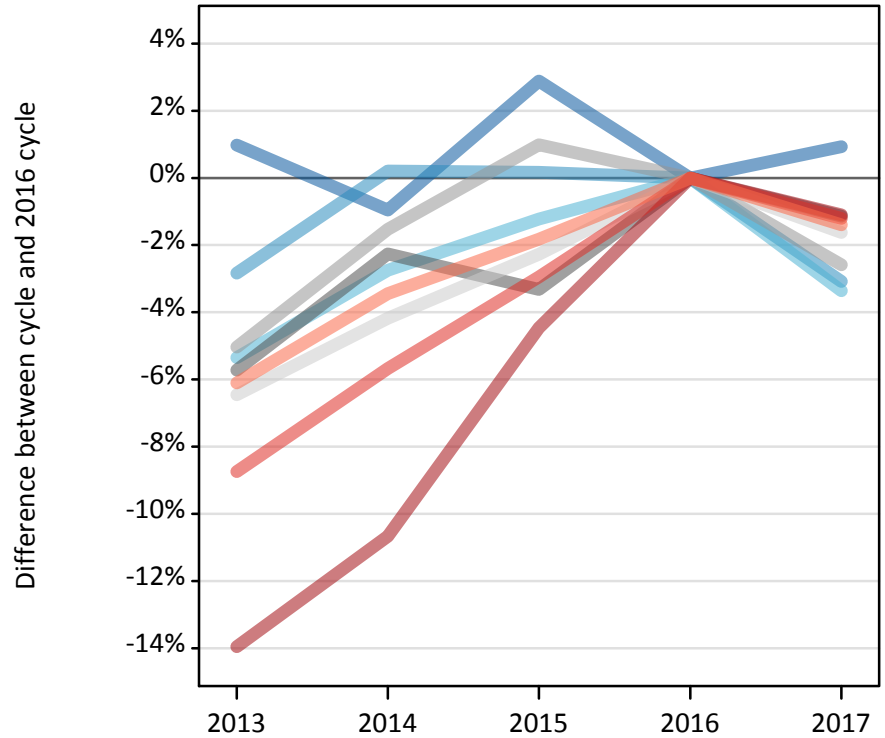
# Daily Clearing Analysis: Region

Analysis at 00:05 on Monday 21 August 2017 (4 days after A level results day)

R.1 Placed applicants by region of domicile: 4 days after A level results day

Placed applicants: change relative to 2016 cycle totals

- North East
- North West
- Yorkshire and The Humber
- East Midlands
- West Midlands
- East of England
- London
- South East
- South West



R.2 Placed applicants by region of domicile: 4 days after A level results day

| Applicant Status | Domicile                 | 2013    | 2014    | 2015    | 2016    | 2017    |
|------------------|--------------------------|---------|---------|---------|---------|---------|
| Placed           | North East               | 14,540  | 14,260  | 14,810  | 14,400  | 14,530  |
|                  | North West               | 43,410  | 44,760  | 44,750  | 44,670  | 43,290  |
|                  | Yorkshire and The Humber | 29,870  | 30,690  | 31,170  | 31,560  | 30,500  |
|                  | East Midlands            | 25,260  | 26,190  | 25,910  | 26,800  | 26,490  |
|                  | West Midlands            | 34,120  | 35,380  | 36,280  | 35,930  | 35,000  |
|                  | East of England          | 33,660  | 34,480  | 35,170  | 35,990  | 35,400  |
|                  | London                   | 56,140  | 58,290  | 62,340  | 65,250  | 64,530  |
|                  | South East               | 51,990  | 53,740  | 55,290  | 56,970  | 56,280  |
|                  | South West               | 30,010  | 30,860  | 31,380  | 31,960  | 31,510  |
|                  | (England total)          | 319,000 | 328,640 | 337,090 | 343,510 | 337,540 |
|                  | Scotland                 | 27,480  | 28,340  | 31,170  | 32,510  | 33,190  |
|                  | Northern Ireland         | 12,630  | 12,610  | 12,420  | 13,270  | 12,870  |
|                  | Wales                    | 16,930  | 17,610  | 18,070  | 18,410  | 17,960  |
|                  | UK                       | 376,040 | 387,200 | 398,750 | 407,700 | 401,560 |

### R.3 Placed applicants by region of domicile: 4 days after A level results day

Placed applicants: change relative to 2016 cycle totals

| Applicant Status | Domicile                 | 2013 | 2014 | 2015 | 2016 | 2017 |
|------------------|--------------------------|------|------|------|------|------|
| Placed           | North East               | 1%   | -1%  | 3%   | 0%   | 1%   |
|                  | North West               | -3%  | 0%   | 0%   | 0%   | -3%  |
|                  | Yorkshire and The Humber | -5%  | -3%  | -1%  | 0%   | -3%  |
|                  | East Midlands            | -6%  | -2%  | -3%  | 0%   | -1%  |
|                  | West Midlands            | -5%  | -2%  | 1%   | 0%   | -3%  |
|                  | East of England          | -6%  | -4%  | -2%  | 0%   | -2%  |
|                  | London                   | -14% | -11% | -4%  | 0%   | -1%  |
|                  | South East               | -9%  | -6%  | -3%  | 0%   | -1%  |
|                  | South West               | -6%  | -3%  | -2%  | 0%   | -1%  |
|                  | (England total)          | -7%  | -4%  | -2%  | 0%   | -2%  |
|                  | Scotland                 | -15% | -13% | -4%  | 0%   | 2%   |
|                  | Northern Ireland         | -5%  | -5%  | -6%  | 0%   | -3%  |
|                  | Wales                    | -8%  | -4%  | -2%  | 0%   | -2%  |
|                  | UK                       | -8%  | -5%  | -2%  | 0%   | -2%  |

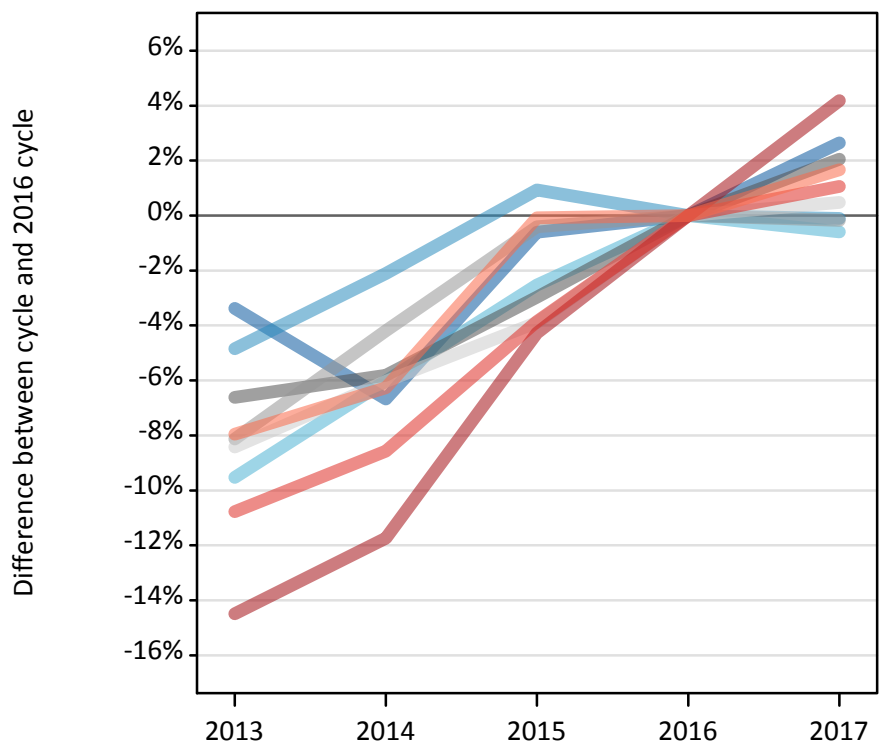
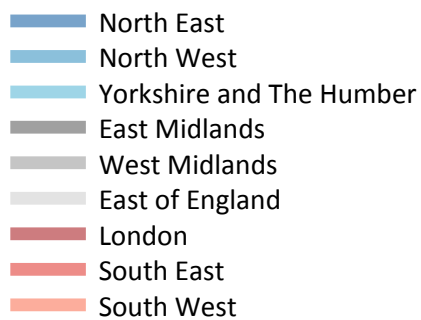
### R.4 Placed applicants by region of domicile: 4 days after A level results day

Placed applicants: absolute change relative to 2016 cycle totals

| Applicant Status | Domicile                 | 2013    | 2014    | 2015   | 2016 | 2017   |
|------------------|--------------------------|---------|---------|--------|------|--------|
| Placed           | North East               | 140     | -140    | 420    | 0    | 130    |
|                  | North West               | -1,270  | 90      | 80     | 0    | -1,380 |
|                  | Yorkshire and The Humber | -1,690  | -870    | -390   | 0    | -1,060 |
|                  | East Midlands            | -1,530  | -610    | -890   | 0    | -310   |
|                  | West Midlands            | -1,810  | -550    | 360    | 0    | -930   |
|                  | East of England          | -2,320  | -1,510  | -820   | 0    | -580   |
|                  | London                   | -9,110  | -6,960  | -2,910 | 0    | -720   |
|                  | South East               | -4,980  | -3,230  | -1,680 | 0    | -690   |
|                  | South West               | -1,950  | -1,100  | -580   | 0    | -450   |
|                  | (England total)          | -24,510 | -14,870 | -6,420 | 0    | -5,970 |
|                  | Scotland                 | -5,040  | -4,180  | -1,340 | 0    | 680    |
|                  | Northern Ireland         | -640    | -660    | -850   | 0    | -400   |
|                  | Wales                    | -1,470  | -800    | -340   | 0    | -450   |
|                  | UK                       | -31,660 | -20,500 | -8,950 | 0    | -6,140 |

### R.5 Placed 18 year old applicants by region of domicile: 4 days after A level results day

Placed 18 year old applicants: change relative to 2016 cycle totals



### R.6 Placed 18 year old applicants by region of domicile: 4 days after A level results day

| Applicant Status | Domicile                 | 2013    | 2014    | 2015    | 2016    | 2017    |
|------------------|--------------------------|---------|---------|---------|---------|---------|
| Placed           | North East               | 7,790   | 7,520   | 8,010   | 8,060   | 8,280   |
|                  | North West               | 24,370  | 25,070  | 25,850  | 25,610  | 25,590  |
|                  | Yorkshire and The Humber | 16,670  | 17,310  | 17,960  | 18,420  | 18,310  |
|                  | East Midlands            | 14,410  | 14,530  | 14,970  | 15,430  | 15,740  |
|                  | West Midlands            | 18,670  | 19,470  | 20,240  | 20,320  | 20,290  |
|                  | East of England          | 20,180  | 20,710  | 21,180  | 22,040  | 22,140  |
|                  | London                   | 29,260  | 30,200  | 32,750  | 34,220  | 35,650  |
|                  | South East               | 30,250  | 31,000  | 32,600  | 33,900  | 34,260  |
|                  | South West               | 15,460  | 15,750  | 16,790  | 16,800  | 17,080  |
|                  | (England total)          | 177,060 | 181,560 | 190,350 | 194,810 | 197,330 |
|                  | Scotland                 | 13,960  | 14,210  | 14,310  | 14,550  | 14,530  |
|                  | Northern Ireland         | 7,880   | 7,670   | 7,590   | 7,860   | 7,780   |
|                  | Wales                    | 9,300   | 9,610   | 10,080  | 10,280  | 9,970   |
|                  | UK                       | 208,210 | 213,040 | 222,320 | 227,500 | 229,610 |

## R.7 Placed 18 year old applicants by region of domicile: 4 days after A level results day

Placed 18 year old applicants: change relative to 2016 cycle totals

| Applicant Status | Domicile                 | 2013 | 2014 | 2015 | 2016 | 2017 |
|------------------|--------------------------|------|------|------|------|------|
| Placed           | North East               | -3%  | -7%  | -1%  | 0%   | 3%   |
|                  | North West               | -5%  | -2%  | 1%   | 0%   | -0%  |
|                  | Yorkshire and The Humber | -10% | -6%  | -3%  | 0%   | -1%  |
|                  | East Midlands            | -7%  | -6%  | -3%  | 0%   | 2%   |
|                  | West Midlands            | -8%  | -4%  | -0%  | 0%   | -0%  |
|                  | East of England          | -8%  | -6%  | -4%  | 0%   | 0%   |
|                  | London                   | -14% | -12% | -4%  | 0%   | 4%   |
|                  | South East               | -11% | -9%  | -4%  | 0%   | 1%   |
|                  | South West               | -8%  | -6%  | -0%  | 0%   | 2%   |
|                  | (England total)          | -9%  | -7%  | -2%  | 0%   | 1%   |
|                  | Scotland                 | -4%  | -2%  | -2%  | 0%   | -0%  |
|                  | Northern Ireland         | 0%   | -2%  | -3%  | 0%   | -1%  |
|                  | Wales                    | -10% | -7%  | -2%  | 0%   | -3%  |
|                  | UK                       | -8%  | -6%  | -2%  | 0%   | 1%   |

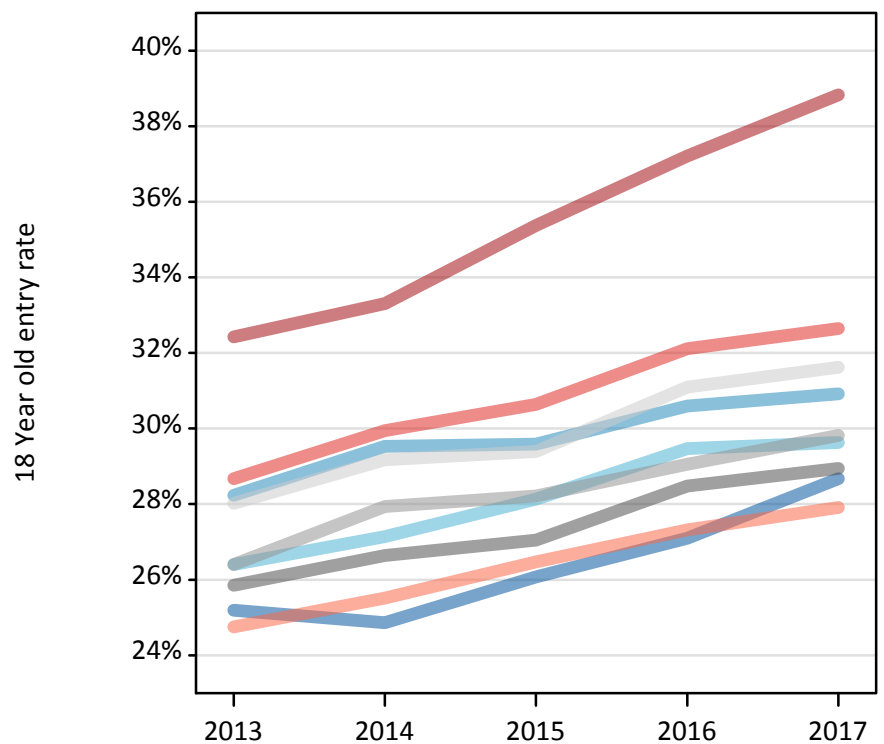
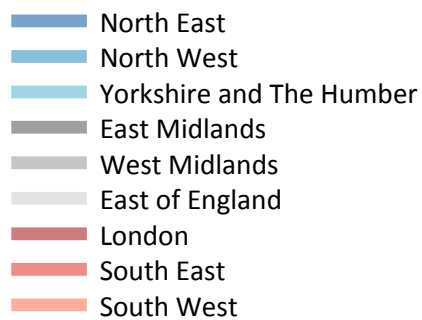
## R.8 Placed 18 year old applicants by region of domicile: 4 days after A level results day

Placed 18 year old applicants: absolute change relative to 2016 cycle totals

| Applicant Status | Domicile                 | 2013    | 2014    | 2015   | 2016 | 2017  |
|------------------|--------------------------|---------|---------|--------|------|-------|
| Placed           | North East               | -270    | -540    | -50    | 0    | 210   |
|                  | North West               | -1,240  | -540    | 240    | 0    | -30   |
|                  | Yorkshire and The Humber | -1,760  | -1,110  | -470   | 0    | -110  |
|                  | East Midlands            | -1,020  | -900    | -460   | 0    | 320   |
|                  | West Midlands            | -1,650  | -850    | -80    | 0    | -40   |
|                  | East of England          | -1,860  | -1,330  | -860   | 0    | 110   |
|                  | London                   | -4,960  | -4,020  | -1,460 | 0    | 1,430 |
|                  | South East               | -3,650  | -2,910  | -1,310 | 0    | 360   |
|                  | South West               | -1,340  | -1,050  | -10    | 0    | 280   |
|                  | (England total)          | -17,740 | -13,240 | -4,460 | 0    | 2,530 |
|                  | Scotland                 | -590    | -340    | -250   | 0    | -20   |
|                  | Northern Ireland         | 20      | -190    | -270   | 0    | -80   |
|                  | Wales                    | -980    | -680    | -210   | 0    | -320  |
|                  | UK                       | -19,290 | -14,460 | -5,180 | 0    | 2,110 |

### R.9 Placed 18 year old applicants by region of domicile: 4 days after A level results day

Placed 18 year old applicants: entry rate



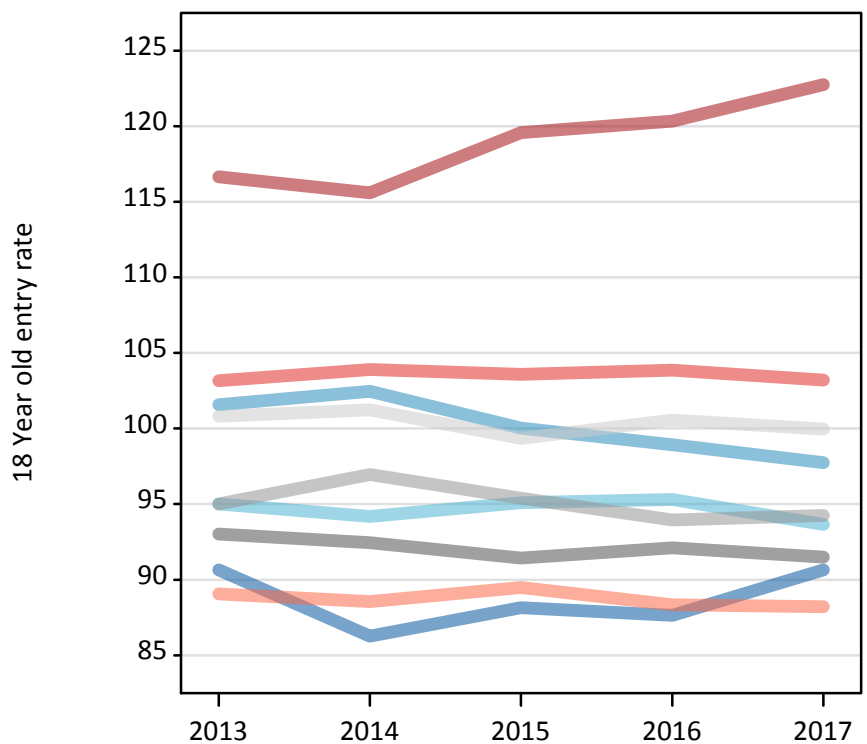
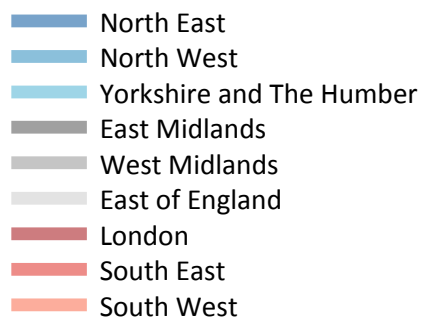
### R.10 Placed 18 year old applicants by region of domicile: 4 days after A level results day

Placed 18 year old applicants: entry rate

| Applicant Status | Domicile                 | 2013  | 2014  | 2015  | 2016  | 2017  |
|------------------|--------------------------|-------|-------|-------|-------|-------|
| Placed           | North East               | 25.2% | 24.9% | 26.1% | 27.1% | 28.7% |
|                  | North West               | 28.2% | 29.5% | 29.6% | 30.6% | 30.9% |
|                  | Yorkshire and The Humber | 26.4% | 27.1% | 28.1% | 29.5% | 29.6% |
|                  | East Midlands            | 25.9% | 26.6% | 27.0% | 28.5% | 28.9% |
|                  | West Midlands            | 26.4% | 27.9% | 28.2% | 29.1% | 29.8% |
|                  | East of England          | 28.0% | 29.2% | 29.4% | 31.1% | 31.6% |
|                  | London                   | 32.4% | 33.3% | 35.4% | 37.2% | 38.8% |
|                  | South East               | 28.7% | 29.9% | 30.6% | 32.1% | 32.6% |
|                  | South West               | 24.8% | 25.5% | 26.5% | 27.3% | 27.9% |
|                  | (England total)          | 27.8% | 28.8% | 29.6% | 30.9% | 31.6% |
|                  | Scotland                 | 22.7% | 23.2% | 23.8% | 24.7% | 25.3% |
|                  | Northern Ireland         | 32.2% | 31.6% | 30.6% | 32.1% | 32.1% |
|                  | Wales                    | 24.6% | 25.6% | 26.7% | 28.3% | 28.1% |
|                  | UK                       | 27.4% | 28.3% | 29.0% | 30.4% | 31.0% |

### R.11 Placed 18 year old applicants by region of domicile: 4 days after A level results day

Placed 18 year old applicants: entry rates (indexed to 100 = England)



### R.12 Placed 18 year old applicants by region of domicile: 4 days after A level results day

Placed 18 year old applicants: entry rate (indexed to 100 = England)

| Applicant Status | Domicile                 | 2013 | 2014 | 2015 | 2016 | 2017 |
|------------------|--------------------------|------|------|------|------|------|
| Placed           | North East               | 91   | 86   | 88   | 88   | 91   |
|                  | North West               | 102  | 102  | 100  | 99   | 98   |
|                  | Yorkshire and The Humber | 95   | 94   | 95   | 95   | 94   |
|                  | East Midlands            | 93   | 92   | 91   | 92   | 92   |
|                  | West Midlands            | 95   | 97   | 95   | 94   | 94   |
|                  | East of England          | 101  | 101  | 99   | 101  | 100  |
|                  | London                   | 117  | 116  | 120  | 120  | 123  |
|                  | South East               | 103  | 104  | 104  | 104  | 103  |
|                  | South West               | 89   | 89   | 89   | 88   | 88   |
|                  | (England total)          | 100  | 100  | 100  | 100  | 100  |