

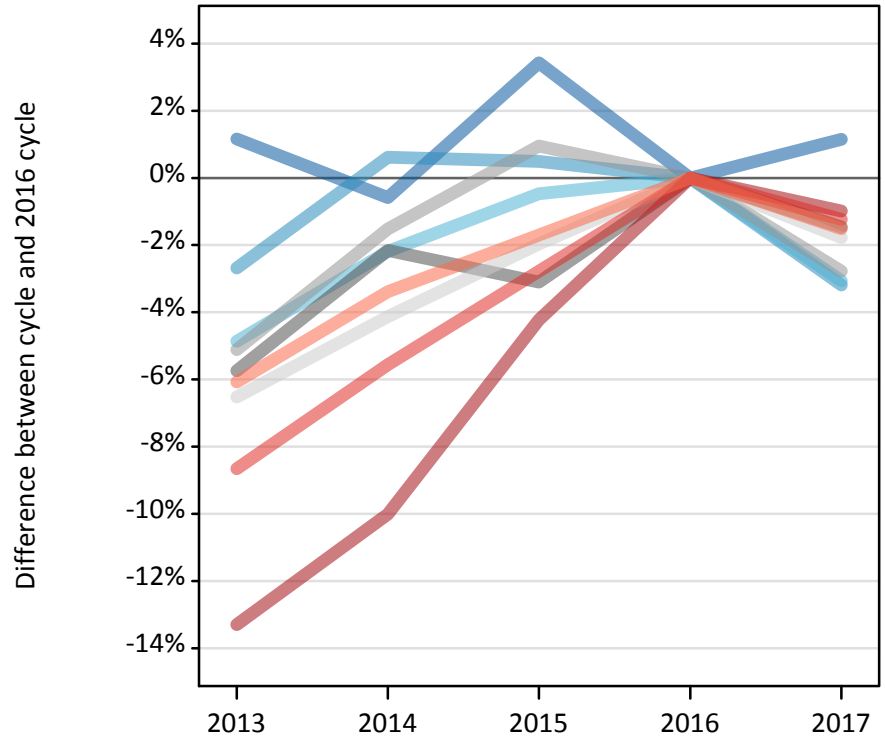
Daily Clearing Analysis: Region

Analysis at 00:05 on Tuesday 22 August 2017 (5 days after A level results day)

R.1 Placed applicants by region of domicile: 5 days after A level results day

Placed applicants: change relative to 2016 cycle totals

- North East
- North West
- Yorkshire and The Humber
- East Midlands
- West Midlands
- East of England
- London
- South East
- South West



R.2 Placed applicants by region of domicile: 5 days after A level results day

Applicant Status	Domicile	2013	2014	2015	2016	2017
Placed	North East	14,740	14,490	15,070	14,570	14,740
	North West	44,080	45,570	45,510	45,290	43,850
	Yorkshire and The Humber	30,390	31,240	31,790	31,940	30,960
	East Midlands	25,620	26,590	26,330	27,180	26,780
	West Midlands	34,700	36,020	36,920	36,570	35,560
	East of England	34,130	35,010	35,800	36,510	35,860
	London	57,940	60,140	64,010	66,830	66,180
	South East	52,740	54,540	56,140	57,740	57,030
	South West	30,400	31,270	31,810	32,370	31,880
	(England total)	324,750	334,870	343,390	349,010	342,840
	Scotland	27,640	28,500	31,390	32,760	33,330
	Northern Ireland	13,000	12,910	12,660	13,480	13,080
	Wales	17,150	17,950	18,320	18,590	18,150
	UK	382,540	394,220	405,760	413,840	407,400

R.3 Placed applicants by region of domicile: 5 days after A level results day

Placed applicants: change relative to 2016 cycle totals

Applicant Status	Domicile	2013	2014	2015	2016	2017
Placed	North East	1%	-1%	3%	0%	1%
	North West	-3%	1%	0%	0%	-3%
	Yorkshire and The Humber	-5%	-2%	-0%	0%	-3%
	East Midlands	-6%	-2%	-3%	0%	-1%
	West Midlands	-5%	-2%	1%	0%	-3%
	East of England	-7%	-4%	-2%	0%	-2%
	London	-13%	-10%	-4%	0%	-1%
	South East	-9%	-6%	-3%	0%	-1%
	South West	-6%	-3%	-2%	0%	-2%
	(England total)	-7%	-4%	-2%	0%	-2%
	Scotland	-16%	-13%	-4%	0%	2%
	Northern Ireland	-4%	-4%	-6%	0%	-3%
	Wales	-8%	-3%	-1%	0%	-2%
	UK	-8%	-5%	-2%	0%	-2%

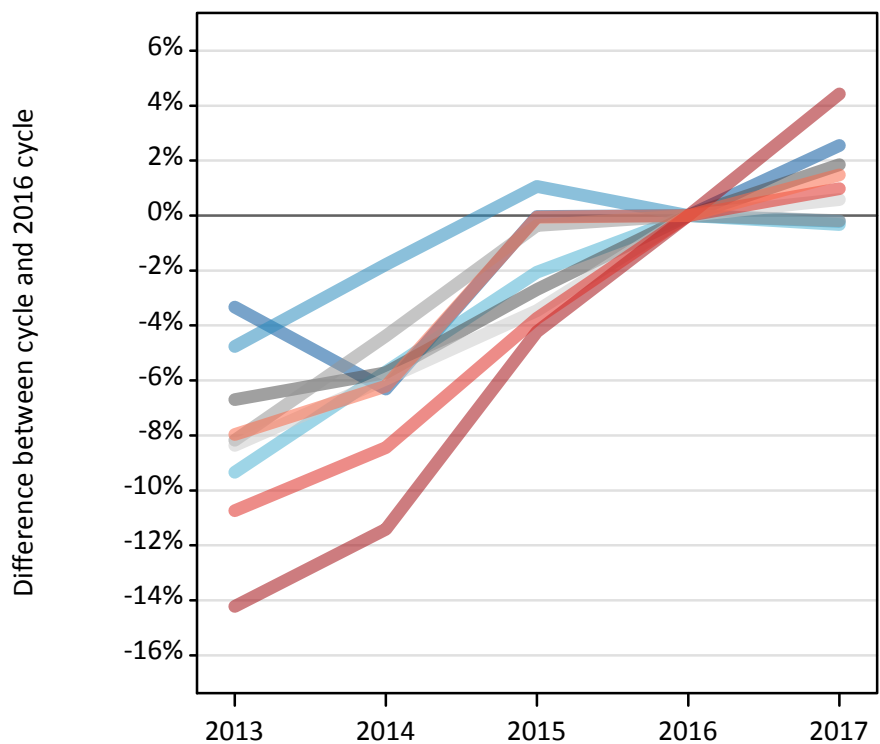
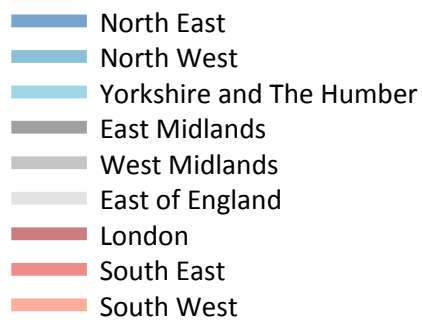
R.4 Placed applicants by region of domicile: 5 days after A level results day

Placed applicants: absolute change relative to 2016 cycle totals

Applicant Status	Domicile	2013	2014	2015	2016	2017
Placed	North East	170	-90	500	0	170
	North West	-1,210	280	220	0	-1,440
	Yorkshire and The Humber	-1,560	-700	-150	0	-980
	East Midlands	-1,560	-590	-840	0	-400
	West Midlands	-1,870	-560	350	0	-1,020
	East of England	-2,380	-1,510	-720	0	-650
	London	-8,890	-6,690	-2,820	0	-660
	South East	-5,000	-3,210	-1,600	0	-710
	South West	-1,970	-1,100	-550	0	-490
	(England total)	-24,260	-14,150	-5,620	0	-6,170
	Scotland	-5,120	-4,260	-1,370	0	570
	Northern Ireland	-480	-570	-820	0	-400
	Wales	-1,440	-640	-270	0	-440
	UK	-31,310	-19,620	-8,080	0	-6,440

R.5 Placed 18 year old applicants by region of domicile: 5 days after A level results day

Placed 18 year old applicants: change relative to 2016 cycle totals



R.6 Placed 18 year old applicants by region of domicile: 5 days after A level results day

Applicant Status	Domicile	2013	2014	2015	2016	2017
Placed	North East	7,890	7,640	8,160	8,160	8,370
	North West	24,700	25,470	26,210	25,930	25,880
	Yorkshire and The Humber	16,890	17,570	18,250	18,630	18,570
	East Midlands	14,580	14,730	15,200	15,620	15,910
	West Midlands	18,950	19,730	20,570	20,640	20,600
	East of England	20,430	20,970	21,520	22,300	22,430
	London	30,020	31,000	33,510	34,990	36,540
	South East	30,640	31,430	33,040	34,330	34,660
	South West	15,630	15,930	16,970	16,980	17,230
	(England total)	179,720	184,470	193,430	197,580	200,190
	Scotland	14,010	14,230	14,340	14,590	14,560
	Northern Ireland	8,140	7,840	7,770	7,990	7,910
	Wales	9,420	9,760	10,200	10,380	10,050
	UK	211,290	216,300	225,730	230,540	232,720

R.7 Placed 18 year old applicants by region of domicile: 5 days after A level results day

Placed 18 year old applicants: change relative to 2016 cycle totals

Applicant Status	Domicile	2013	2014	2015	2016	2017
Placed	North East	-3%	-6%	-0%	0%	3%
	North West	-5%	-2%	1%	0%	-0%
	Yorkshire and The Humber	-9%	-6%	-2%	0%	-0%
	East Midlands	-7%	-6%	-3%	0%	2%
	West Midlands	-8%	-4%	-0%	0%	-0%
	East of England	-8%	-6%	-3%	0%	1%
	London	-14%	-11%	-4%	0%	4%
	South East	-11%	-8%	-4%	0%	1%
	South West	-8%	-6%	-0%	0%	1%
	(England total)	-9%	-7%	-2%	0%	1%
	Scotland	-4%	-2%	-2%	0%	-0%
	Northern Ireland	2%	-2%	-3%	0%	-1%
	Wales	-9%	-6%	-2%	0%	-3%
	UK	-8%	-6%	-2%	0%	1%

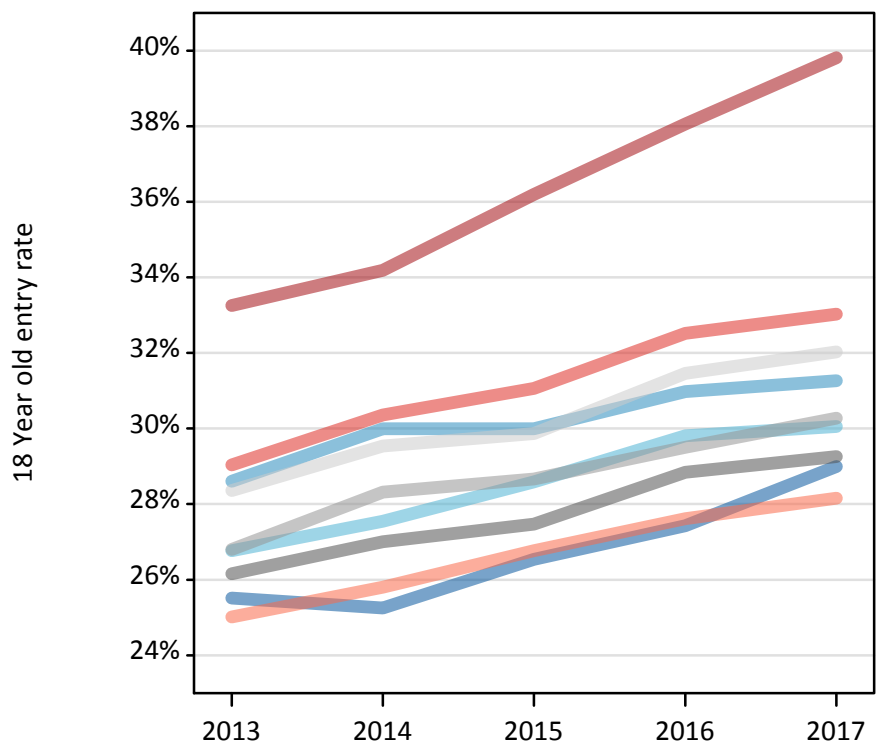
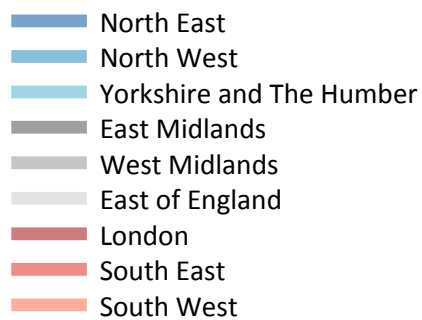
R.8 Placed 18 year old applicants by region of domicile: 5 days after A level results day

Placed 18 year old applicants: absolute change relative to 2016 cycle totals

Applicant Status	Domicile	2013	2014	2015	2016	2017
Placed	North East	-270	-520	0	0	210
	North West	-1,240	-460	280	0	-60
	Yorkshire and The Humber	-1,740	-1,060	-390	0	-60
	East Midlands	-1,050	-890	-420	0	290
	West Midlands	-1,690	-910	-70	0	-40
	East of England	-1,860	-1,330	-770	0	130
	London	-4,980	-4,000	-1,480	0	1,550
	South East	-3,690	-2,900	-1,290	0	340
	South West	-1,350	-1,050	-10	0	250
	(England total)	-17,860	-13,110	-4,150	0	2,610
	Scotland	-580	-350	-250	0	-20
	Northern Ireland	150	-150	-220	0	-80
	Wales	-960	-620	-180	0	-330
	UK	-19,250	-14,230	-4,810	0	2,180

R.9 Placed 18 year old applicants by region of domicile: 5 days after A level results day

Placed 18 year old applicants: entry rate



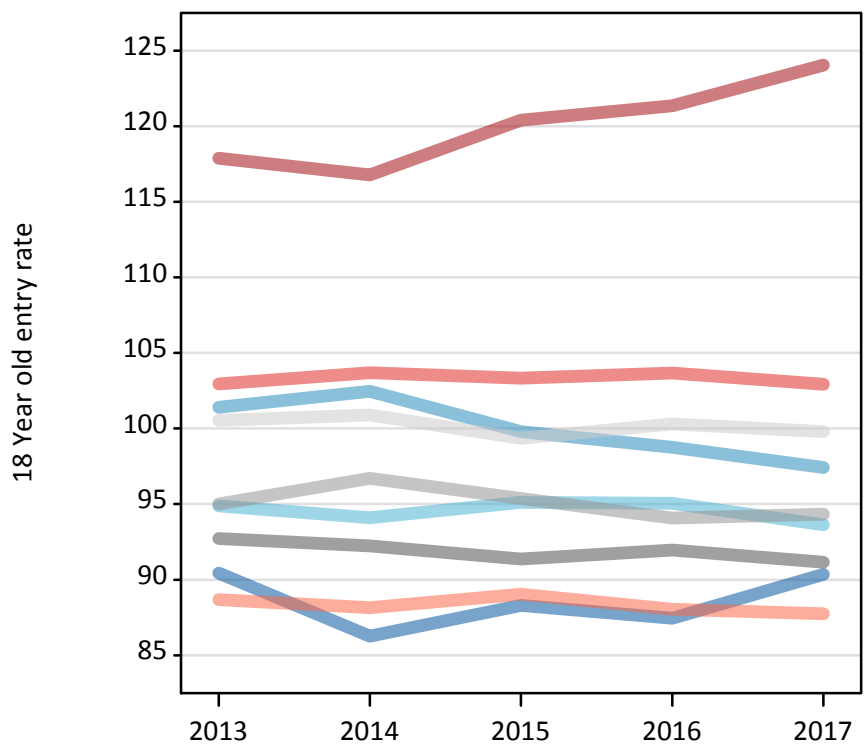
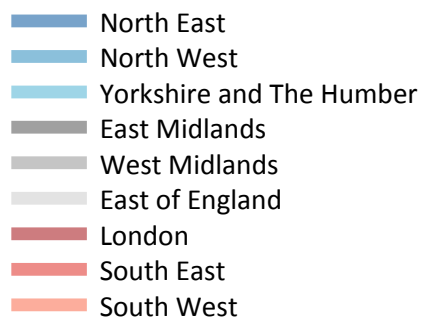
R.10 Placed 18 year old applicants by region of domicile: 5 days after A level results day

Placed 18 year old applicants: entry rate

Applicant Status	Domicile	2013	2014	2015	2016	2017
Placed	North East	25.5%	25.3%	26.5%	27.4%	29.0%
	North West	28.6%	30.0%	30.0%	31.0%	31.3%
	Yorkshire and The Humber	26.8%	27.5%	28.6%	29.8%	30.1%
	East Midlands	26.2%	27.0%	27.5%	28.8%	29.3%
	West Midlands	26.8%	28.3%	28.7%	29.5%	30.3%
	East of England	28.4%	29.5%	29.9%	31.5%	32.0%
	London	33.3%	34.2%	36.2%	38.1%	39.8%
	South East	29.0%	30.4%	31.1%	32.5%	33.0%
	South West	25.0%	25.8%	26.8%	27.6%	28.2%
	(England total)	28.2%	29.3%	30.1%	31.4%	32.1%
	Scotland	22.7%	23.2%	23.8%	24.8%	25.4%
	Northern Ireland	33.2%	32.3%	31.3%	32.7%	32.7%
	Wales	24.9%	26.0%	27.1%	28.6%	28.3%
	UK	27.8%	28.7%	29.5%	30.8%	31.4%

R.11 Placed 18 year old applicants by region of domicile: 5 days after A level results day

Placed 18 year old applicants: entry rates (indexed to 100 = England)



R.12 Placed 18 year old applicants by region of domicile: 5 days after A level results day

Placed 18 year old applicants: entry rate (indexed to 100 = England)

Applicant Status	Domicile	2013	2014	2015	2016	2017
Placed	North East	90	86	88	87	90
	North West	101	102	100	99	97
	Yorkshire and The Humber	95	94	95	95	94
	East Midlands	93	92	91	92	91
	West Midlands	95	97	95	94	94
	East of England	101	101	99	100	100
	London	118	117	120	121	124
	South East	103	104	103	104	103
	South West	89	88	89	88	88
	(England total)	100	100	100	100	100