

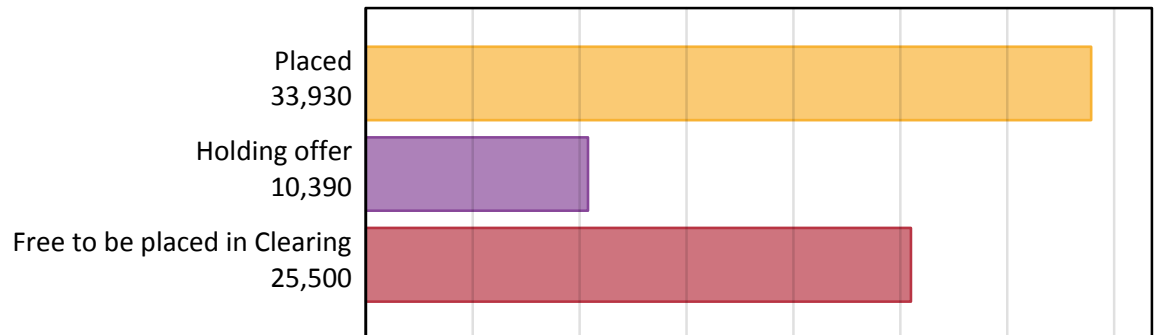
Daily Clearing Analysis: Overview

Analysis at 00:05 on Wednesday 23 August 2017 (6 days after A level results day)

A.1 Applicants by type and status from outside the EU, 2017 cycle

| Applicant type | Status | 2017 |
|--------------------|-------------------------------|--------|
| Main scheme | Placed (Clearing) | 2,320 |
| | Placed (Adjustment) | 50 |
| | Placed (Firm) | 26,040 |
| | Placed (Insurance) | 3,290 |
| | Placed (Other) | 1,860 |
| | Holding offer | 10,390 |
| | Free to be placed in Clearing | 25,500 |
| Direct to Clearing | Placed (Direct to Clearing) | 380 |
| | Other (Direct to Clearing) | 740 |
| All applicants | Placed | 33,930 |

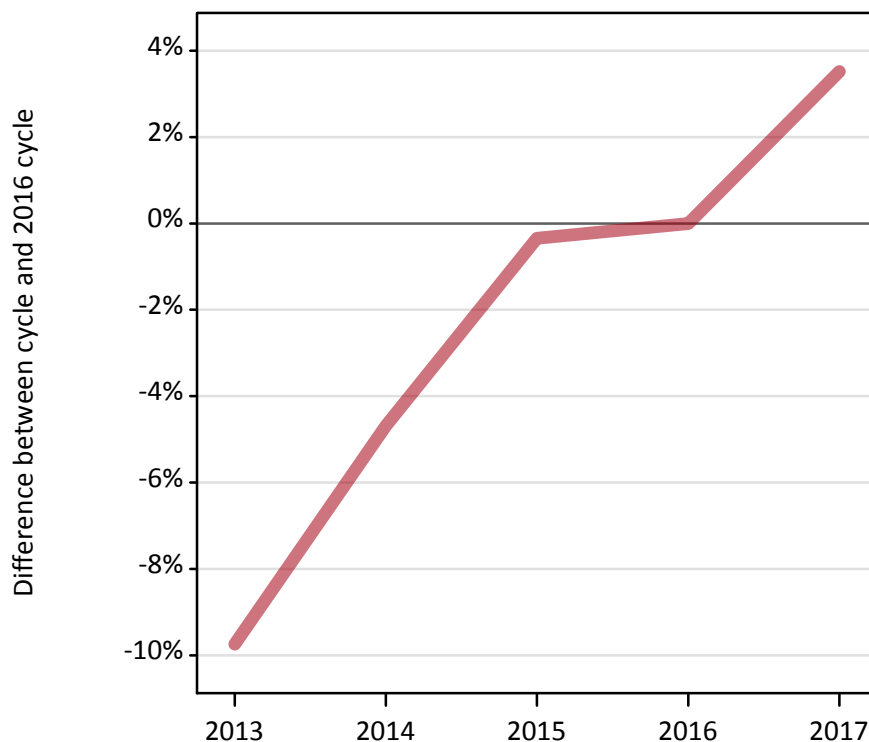
A.2 Summary of applicants who are placed, holding offers or free to be placed in Clearing (outside the EU)



A.3 All placed applicants from outside the EU: 6 days after A level results day

All placed applicants: difference between cycle and 2016 cycle

Placed



A.4 All placed applicants from outside the EU: 6 days after A level results day

All placed applicants: applicants at 6 days after A level results day

| Applicant type | Status | 2013 | 2014 | 2015 | 2016 | 2017 |
|----------------|--------|--------|--------|--------|--------|--------|
| All applicants | Placed | 29,580 | 31,240 | 32,660 | 32,770 | 33,930 |

A.5 All placed applicants from outside the EU: 6 days after A level results day

All placed applicants: difference between cycle and 2016 cycle

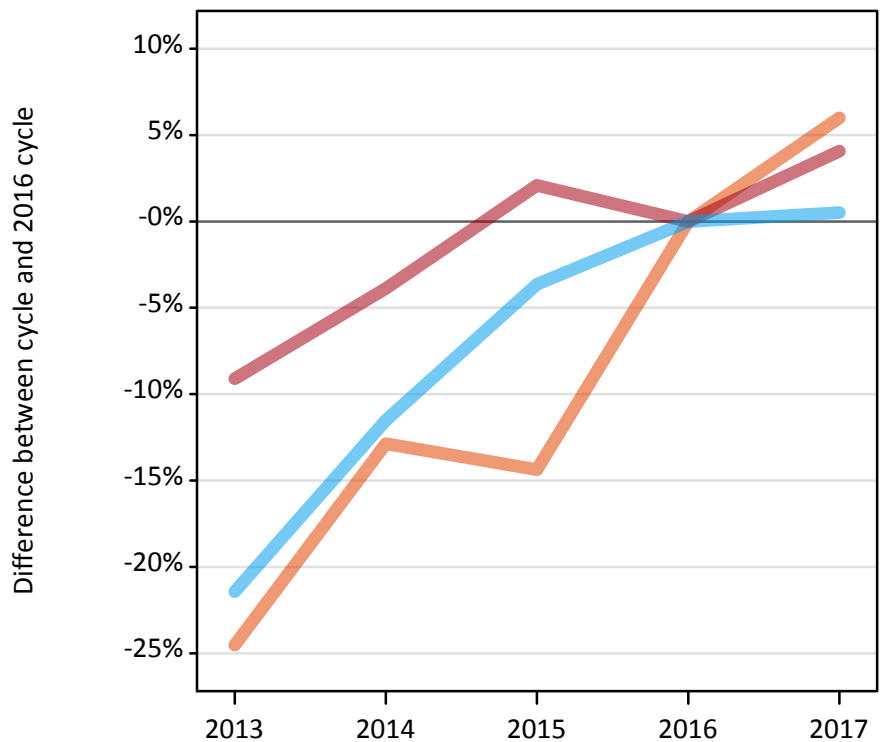
| Applicant type | Status | 2013 | 2014 | 2015 | 2016 | 2017 |
|----------------|--------|------|------|------|------|------|
| All applicants | Placed | -10% | -5% | -0% | 0% | 4% |

Note: Percentage changes are not plotted for lines with, on average, fewer than 30 applicants per year. As a result, lines for some, or all, of the states may be missing.

A.6 Placed main scheme applicants from outside the EU: 6 days after A level results day

Selected placed routes: difference between cycle and 2016 cycle

- Placed (Clearing)
- Placed (Firm)
- Placed (Insurance)



A.7 Placed main scheme applicants from outside the EU: 6 days after A level results day

All Main scheme placed routes (excluding Adjustment): applicants at 6 days after A level results day

| Applicant type | Status | 2013 | 2014 | 2015 | 2016 | 2017 |
|----------------|--------------------|--------|--------|--------|--------|--------|
| Main scheme | Placed (Clearing) | 1,650 | 1,900 | 1,870 | 2,190 | 2,320 |
| | Placed (Firm) | 22,740 | 24,050 | 25,540 | 25,020 | 26,040 |
| | Placed (Insurance) | 2,570 | 2,900 | 3,160 | 3,280 | 3,290 |
| | Placed (Other) | 2,260 | 2,030 | 1,720 | 1,830 | 1,860 |

A.8 Placed main scheme applicants from outside the EU: 6 days after A level results day

Selected placed routes: difference between cycle and 2016 cycle

| Applicant type | Status | 2013 | 2014 | 2015 | 2016 | 2017 |
|----------------|--------------------|------|------|------|------|------|
| Main scheme | Placed (Clearing) | -25% | -13% | -14% | 0% | 6% |
| | Placed (Firm) | -9% | -4% | 2% | 0% | 4% |
| | Placed (Insurance) | -21% | -12% | -4% | 0% | 1% |

Note: Percentage changes are not plotted for lines with, on average, fewer than 30 applicants per year. As a result, lines for some, or all, of the states may be missing.

A.9 Main scheme applicants placed through adjustment: 6 days after A level results day

Placed through adjustment: difference between cycle and 2016 cycle

Placed (Adjustment)



A.10 Main scheme applicants placed through adjustment: 6 days after A level results day

Placed through adjustment: applicants at 6 days after A level results day

| Applicant type | Status | 2013 | 2014 | 2015 | 2016 | 2017 |
|----------------|---------------------|------|------|------|------|------|
| Main scheme | Placed (Adjustment) | 60 | 80 | 70 | 70 | 50 |

A.11 Main scheme applicants placed through adjustment: 6 days after A level results day

Placed through adjustment: difference between cycle and 2016 cycle

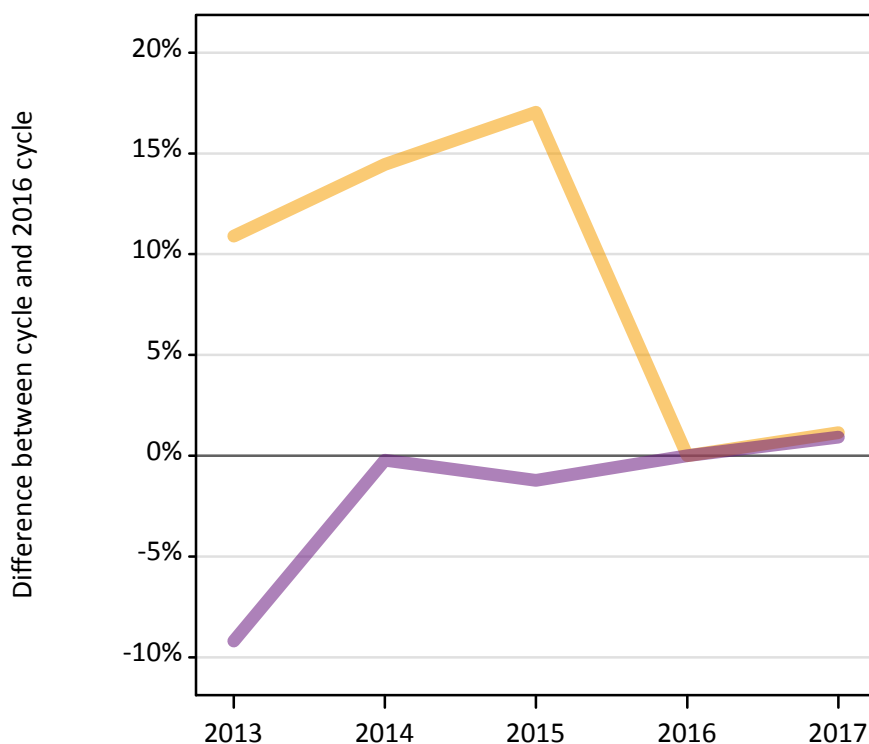
| Applicant type | Status | 2013 | 2014 | 2015 | 2016 | 2017 |
|----------------|---------------------|------|------|------|------|------|
| Main scheme | Placed (Adjustment) | -15% | 29% | 6% | 0% | -28% |

Note: Percentage changes are not plotted for lines with, on average, fewer than 30 applicants per year. As a result, lines for some, or all, of the states may be missing.

A.12 Main scheme applicants not currently placed from outside the EU: 6 days after A level results day

Applicants in unplaced states: difference between cycle and 2016 cycle

— Holding offer
— Free to be placed in Clearing



A.13 Main scheme applicants not currently placed from outside the EU: 6 days after A level results day

Applicants in unplaced states: applicants at 6 days after A level results day

| Applicant type | Status | 2013 | 2014 | 2015 | 2016 | 2017 |
|----------------|-------------------------------|--------|--------|--------|--------|--------|
| Main scheme | Holding offer | 11,400 | 11,760 | 12,030 | 10,280 | 10,390 |
| | Free to be placed in Clearing | 22,940 | 25,210 | 24,960 | 25,260 | 25,500 |

A.14 Main scheme applicants not currently placed from outside the EU: 6 days after A level results day

Applicants in unplaced states: difference between cycle and 2016 cycle

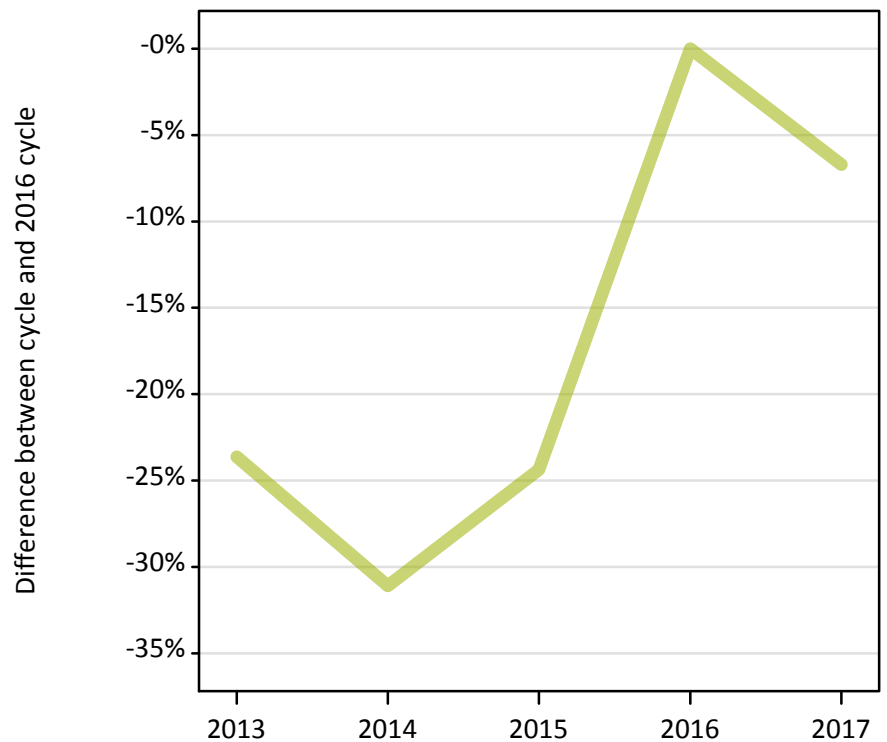
| Applicant type | Status | 2013 | 2014 | 2015 | 2016 | 2017 |
|----------------|-------------------------------|------|------|------|------|------|
| Main scheme | Holding offer | 11% | 14% | 17% | 0% | 1% |
| | Free to be placed in Clearing | -9% | -0% | -1% | 0% | 1% |

Note: Percentage changes are not plotted for lines with, on average, fewer than 30 applicants per year. As a result, lines for some, or all, of the states may be missing.

A.15 Direct to Clearing applicants from outside the EU: 6 days after A level results day

Placed (Direct to Clearing): difference between cycle and 2016 cycle

Placed (Direct to Clearing)



A.16 Direct to Clearing applicants from outside the EU: 6 days after A level results day

Direct to Clearing 6 days after A level results day

| Applicant type | Status | 2013 | 2014 | 2015 | 2016 | 2017 |
|--------------------|-----------------------------|------|------|------|------|------|
| Direct to Clearing | Placed (Direct to Clearing) | 310 | 280 | 300 | 400 | 380 |
| | Other (Direct to Clearing) | 850 | 690 | 810 | 660 | 740 |

A.17 Direct to Clearing applicants from outside the EU: 6 days after A level results day

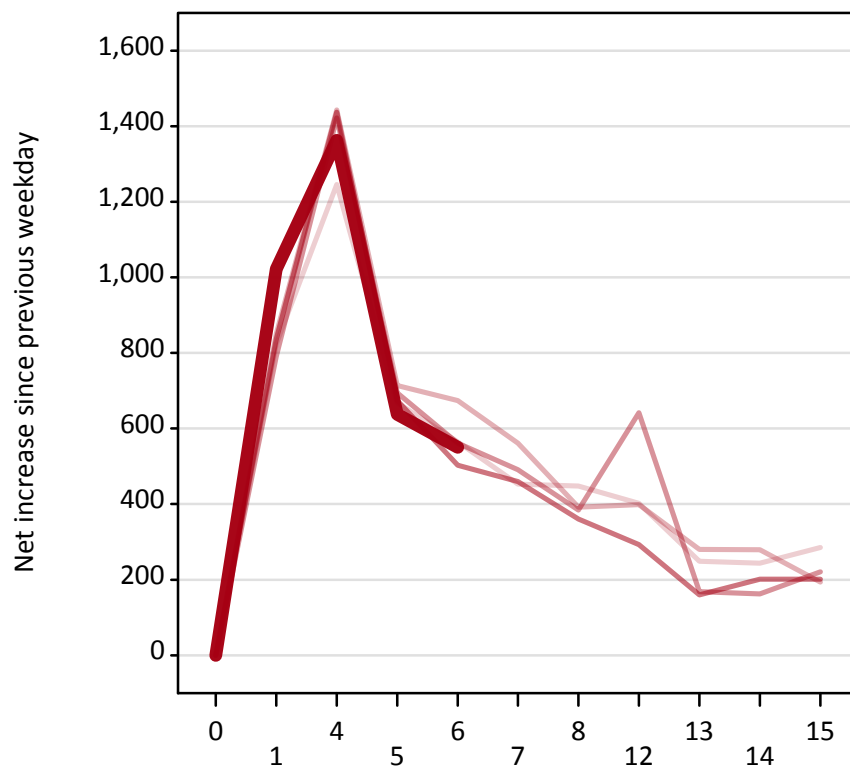
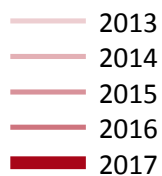
Placed (Direct to Clearing): difference between cycle and 2016 cycle

| Applicant type | Status | 2013 | 2014 | 2015 | 2016 | 2017 |
|--------------------|-----------------------------|------|------|------|------|------|
| Direct to Clearing | Placed (Direct to Clearing) | -24% | -31% | -24% | 0% | -7% |

Note: Percentage changes are not plotted for lines with, on average, fewer than 30 applicants per year. As a result, lines for some, or all, of the states may be missing.

A.18 All Placed: Daily net change (from outside the EU)

Net increase since previous weekday (2017 cycle up to 6 days after A level results day)



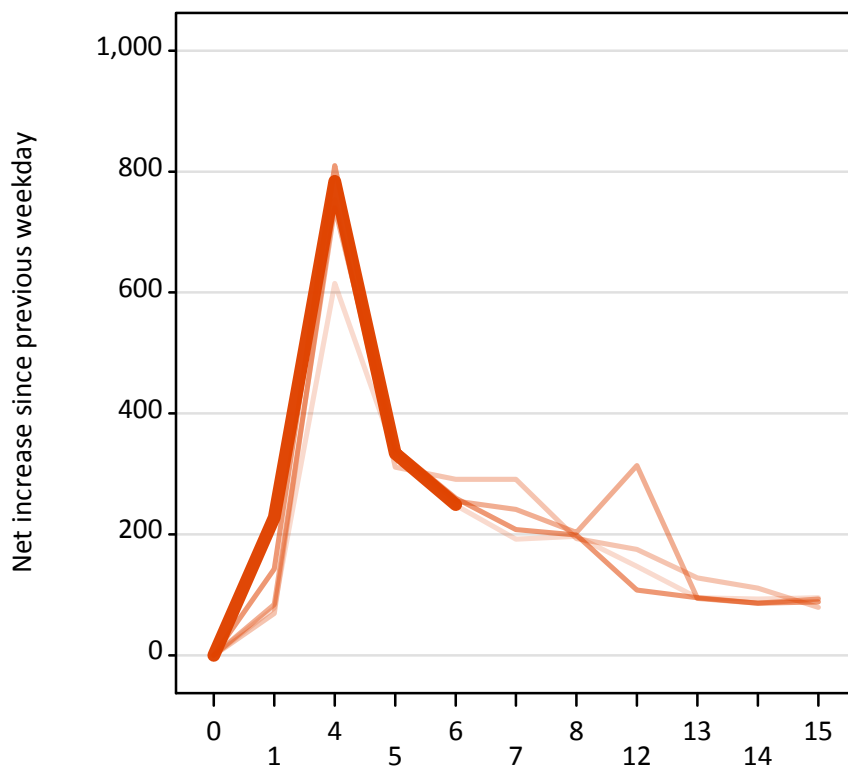
A.19 All Placed: Daily net change (from outside the EU)

Net increase since previous weekday (2017 cycle up to 6 days after A level results day)

| Applicant status, days since A level results day | | 2013 | 2014 | 2015 | 2016 | 2017 |
|--|----|-------|-------|-------|-------|-------|
| All Placed | 0 | 0 | 0 | 0 | 0 | 0 |
| | 1 | 820 | 850 | 790 | 840 | 1,020 |
| | 4 | 1,250 | 1,440 | 1,420 | 1,440 | 1,360 |
| | 5 | 670 | 710 | 690 | 670 | 640 |
| | 6 | 570 | 670 | 560 | 500 | 550 |
| | 7 | 450 | 560 | 490 | 460 | |
| | 8 | 450 | 390 | 380 | 360 | |
| | 12 | 400 | 400 | 640 | 290 | |
| | 13 | 250 | 280 | 170 | 160 | |
| | 14 | 240 | 280 | 160 | 200 | |
| | 15 | 290 | 190 | 220 | 200 | |

A.20 Placed through Clearing only: Daily net change (from outside the EU)

Net increase since previous weekday (2017 cycle up to 6 days after A level results day)



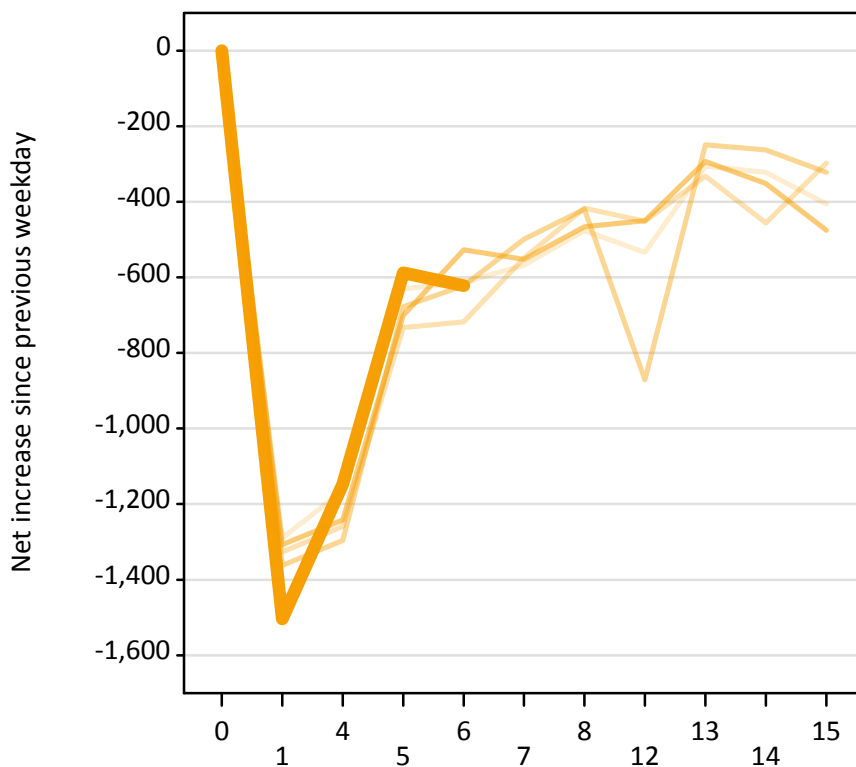
A.21 Placed through Clearing only: Daily net change (from outside the EU)

Net increase since previous weekday (2017 cycle up to 6 days after A level results day)

| Applicant status, days since A level results day | | 2013 | 2014 | 2015 | 2016 | 2017 |
|--|----|------|------|------|------|------|
| Placed through Clearing only | 0 | 0 | 0 | 0 | 0 | 0 |
| | 1 | 80 | 70 | 80 | 140 | 230 |
| | 4 | 620 | 750 | 740 | 810 | 780 |
| | 5 | 330 | 310 | 340 | 340 | 330 |
| | 6 | 250 | 290 | 260 | 260 | 250 |
| | 7 | 190 | 290 | 240 | 210 | |
| | 8 | 200 | 190 | 200 | 200 | |
| | 12 | 150 | 180 | 310 | 110 | |
| | 13 | 100 | 130 | 90 | 100 | |
| | 14 | 90 | 110 | 90 | 90 | |
| | 15 | 100 | 80 | 90 | 90 | |

A.22 Holding Offer: Daily net change (from outside the EU)

Net increase since previous weekday (2017 cycle up to 6 days after A level results day)



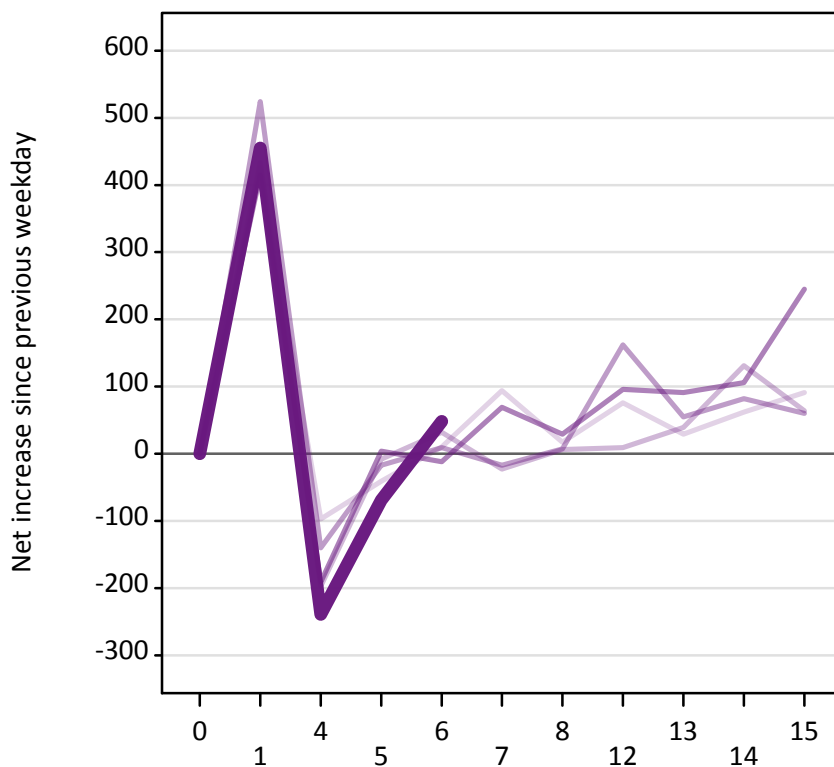
A.23 Holding Offer: Daily net change (from outside the EU)

Net increase since previous weekday (2017 cycle up to 6 days after A level results day)

| Applicant status, days since A level results day | | 2013 | 2014 | 2015 | 2016 | 2017 |
|--|----|--------|--------|--------|--------|--------|
| Holding Offer | 0 | 0 | 0 | 0 | 0 | 0 |
| | 1 | -1,290 | -1,330 | -1,360 | -1,310 | -1,500 |
| | 4 | -1,170 | -1,260 | -1,300 | -1,240 | -1,150 |
| | 5 | -630 | -730 | -680 | -700 | -590 |
| | 6 | -610 | -720 | -620 | -530 | -620 |
| | 7 | -570 | -550 | -500 | -550 | |
| | 8 | -480 | -420 | -420 | -470 | |
| | 12 | -530 | -450 | -870 | -450 | |
| | 13 | -310 | -330 | -250 | -290 | |
| | 14 | -320 | -460 | -260 | -350 | |
| | 15 | -410 | -300 | -320 | -480 | |

A.24 Free to be placed in Clearing: Daily net change (from outside the EU)

Net increase since previous weekday (2017 cycle up to 6 days after A level results day)



A.25 Free to be placed in Clearing: Daily net change (from outside the EU)

Net increase since previous weekday (2017 cycle up to 6 days after A level results day)

| Applicant status, days since A level results day | | 2013 | 2014 | 2015 | 2016 | 2017 |
|--|----|------|------|------|------|------|
| Free to be placed in Clearing | 0 | 0 | 0 | 0 | 0 | 0 |
| | 1 | 430 | 430 | 520 | 420 | 460 |
| | 4 | -100 | -200 | -140 | -190 | -240 |
| | 5 | -40 | -10 | -20 | 0 | -70 |
| | 6 | 10 | 30 | 10 | -10 | 50 |
| | 7 | 90 | -20 | -20 | 70 | |
| | 8 | 20 | 10 | 10 | 30 | |
| | 12 | 80 | 10 | 160 | 100 | |
| | 13 | 30 | 40 | 60 | 90 | |
| | 14 | 60 | 130 | 80 | 110 | |
| | 15 | 90 | 60 | 60 | 250 | |