

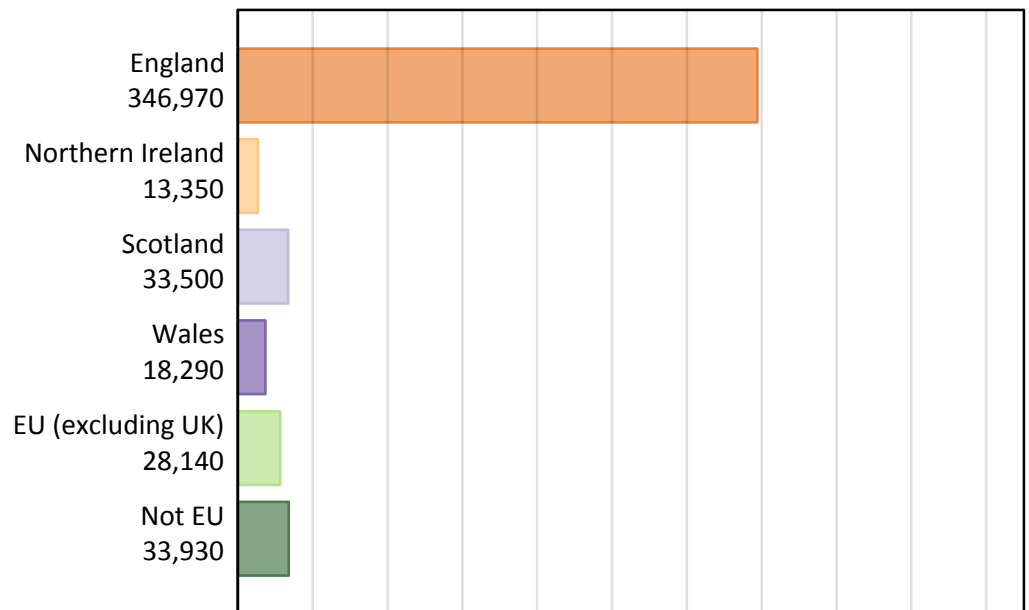
Daily Clearing Analysis: Country

Analysis at 00:05 on Wednesday 23 August 2017 (6 days after A level results day)

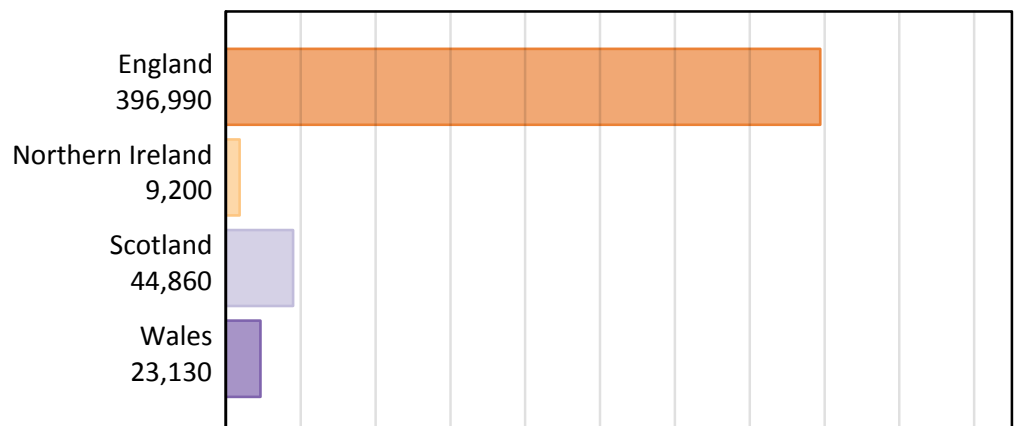
B.1 Placed applicants by country of provider and domicile, 2017 cycle

Domicile of applicant	Country of provider				
	England	Northern Ireland	Scotland	Wales	UK
England	331,480	310	4,970	10,210	346,970
Northern Ireland	3,780	8,300	1,110	170	13,350
Scotland	1,540	30	31,890	50	33,500
Wales	7,850	10	130	10,300	18,290
EU (excluding UK)	22,400	340	4,020	1,380	28,140
Not EU	29,950	200	2,750	1,030	33,930
All	396,990	9,200	44,860	23,130	474,180

B.2 Placed applicants by domicile group

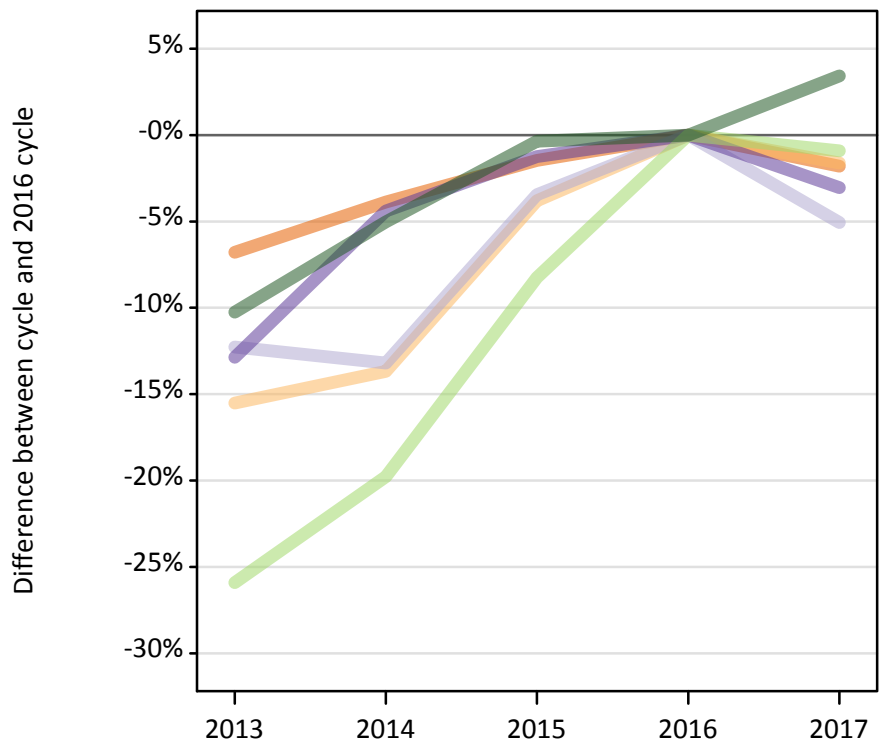


B.3 Placed applicants by country of provider



B.4 Placed applicants at 6 days after A level results day: providers in England

Selected applicant domiciles: difference between cycle and 2016 cycle (at 6 days after A level results day)



B.5 Placed applicants at 6 days after A level results day: providers in England

Placed applicants by domicile (at 6 days after A level results day)

Domicile of applicant	2013	2014	2015	2016	2017
England	314,640	324,420	332,610	337,540	331,480
Northern Ireland	3,240	3,310	3,690	3,840	3,780
Scotland	1,420	1,410	1,570	1,620	1,540
Wales	7,050	7,740	7,990	8,100	7,850
EU (excluding UK)	16,750	18,140	20,740	22,610	22,400
Not EU	25,990	27,500	28,860	28,960	29,950

B.6 Placed applicants at 6 days after A level results day: providers in England

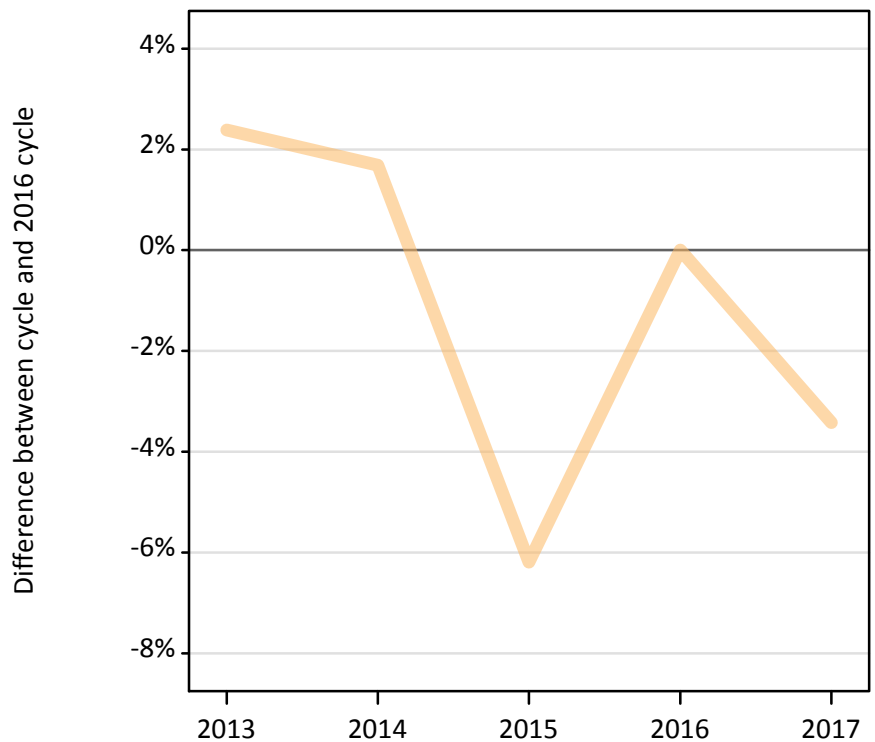
Selected applicant domiciles: difference between cycle and 2016 cycle (at 6 days after A level results day)

Domicile of applicant	2013	2014	2015	2016	2017
England	-7%	-4%	-1%	0%	-2%
Northern Ireland	-16%	-14%	-4%	0%	-2%
Scotland	-12%	-13%	-3%	0%	-5%
Wales	-13%	-4%	-1%	0%	-3%
EU (excluding UK)	-26%	-20%	-8%	0%	-1%
Not EU	-10%	-5%	-0%	0%	3%

B.7 Placed applicants at 6 days after A level results day: providers in Northern Ireland

Selected applicant domiciles: difference between cycle and 2016 cycle (at 6 days after A level results day)

Northern Ireland



B.8 Placed applicants at 6 days after A level results day: providers in Northern Ireland

Placed applicants by domicile (at 6 days after A level results day)

Domicile of applicant	2013	2014	2015	2016	2017
England	240	350	550	290	310
Northern Ireland	8,800	8,740	8,060	8,590	8,300
Scotland	10	20	20	20	30
Wales	0	10	10	10	10
EU (excluding UK)	450	490	410	360	340
Not EU	170	170	150	220	200

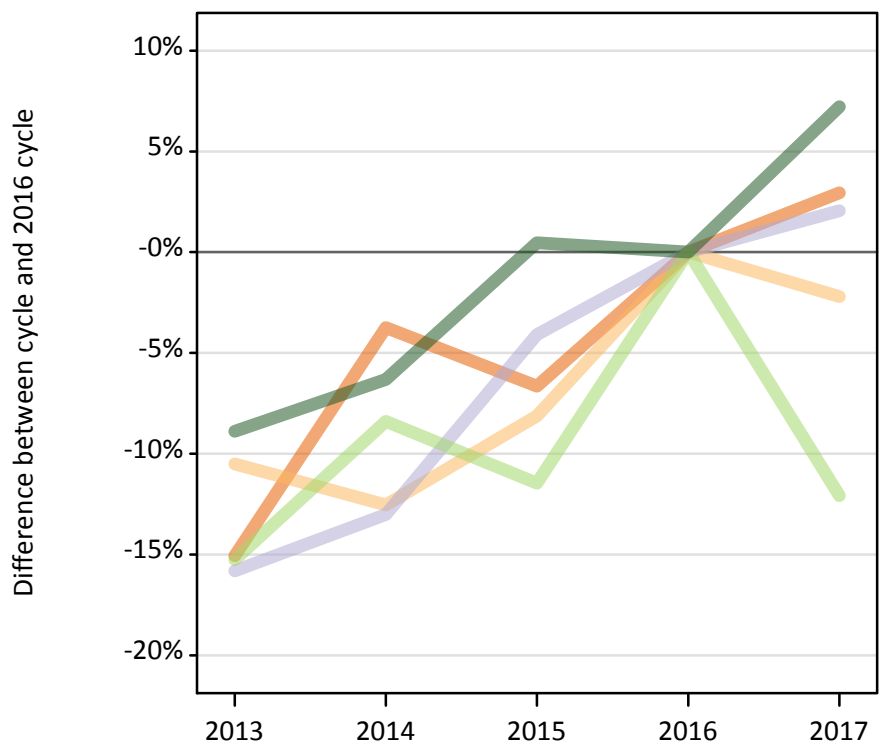
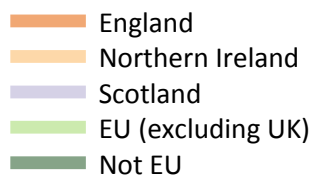
B.9 Placed applicants at 6 days after A level results day: providers in Northern Ireland

Selected applicant domiciles: difference between cycle and 2016 cycle (at 6 days after A level results day)

Domicile of applicant	2013	2014	2015	2016	2017
Northern Ireland	2%	2%	-6%	0%	-3%

B.10 Placed applicants at 6 days after A level results day: providers in Scotland

Selected applicant domiciles: difference between cycle and 2016 cycle (at 6 days after A level results day)



B.11 Placed applicants at 6 days after A level results day: providers in Scotland

Placed applicants by domicile (at 6 days after A level results day)

Domicile of applicant	2013	2014	2015	2016	2017
England	4,100	4,650	4,510	4,830	4,970
Northern Ireland	1,010	990	1,040	1,130	1,110
Scotland	26,310	27,180	29,970	31,250	31,890
Wales	100	100	110	130	130
EU (excluding UK)	3,870	4,190	4,050	4,570	4,020
Not EU	2,340	2,400	2,580	2,570	2,750

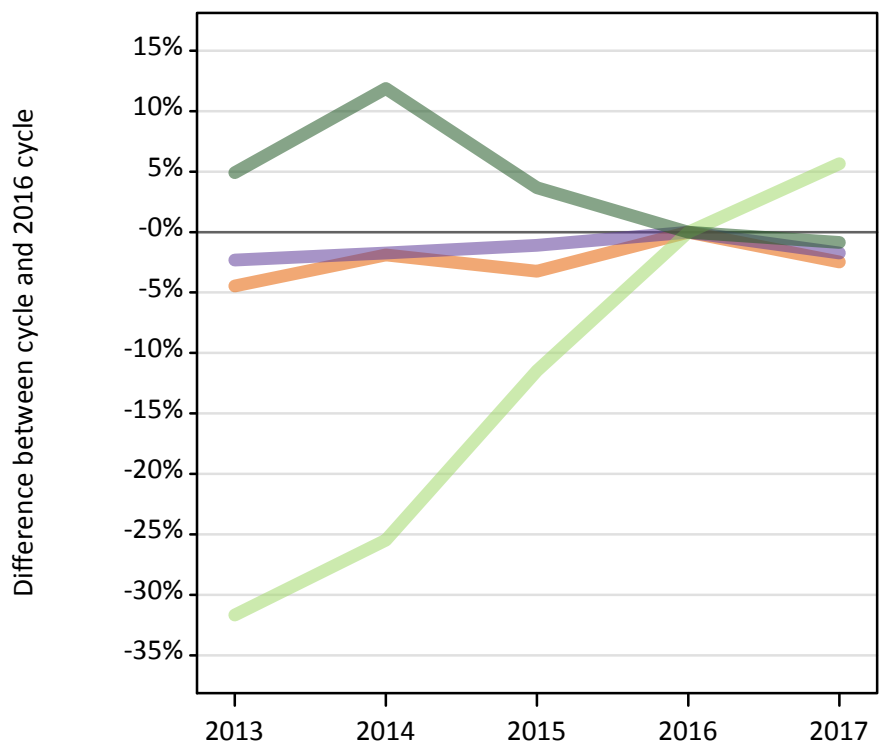
B.12 Placed applicants at 6 days after A level results day: providers in Scotland

Selected applicant domiciles: difference between cycle and 2016 cycle (at 6 days after A level results day)

Domicile of applicant	2013	2014	2015	2016	2017
England	-15%	-4%	-7%	0%	3%
Northern Ireland	-11%	-13%	-8%	0%	-2%
Scotland	-16%	-13%	-4%	0%	2%
EU (excluding UK)	-15%	-8%	-11%	0%	-12%
Not EU	-9%	-6%	0%	0%	7%

B.13 Placed applicants at 6 days after A level results day: providers in Wales

Selected applicant domiciles: difference between cycle and 2016 cycle (at 6 days after A level results day)



B.14 Placed applicants at 6 days after A level results day: providers in Wales

Placed applicants by domicile (at 6 days after A level results day)

Domicile of applicant	2013	2014	2015	2016	2017
England	10,000	10,270	10,130	10,470	10,210
Northern Ireland	160	160	160	170	170
Scotland	60	60	50	40	50
Wales	10,240	10,300	10,370	10,480	10,300
EU (excluding UK)	890	970	1,160	1,310	1,380
Not EU	1,090	1,160	1,070	1,040	1,030

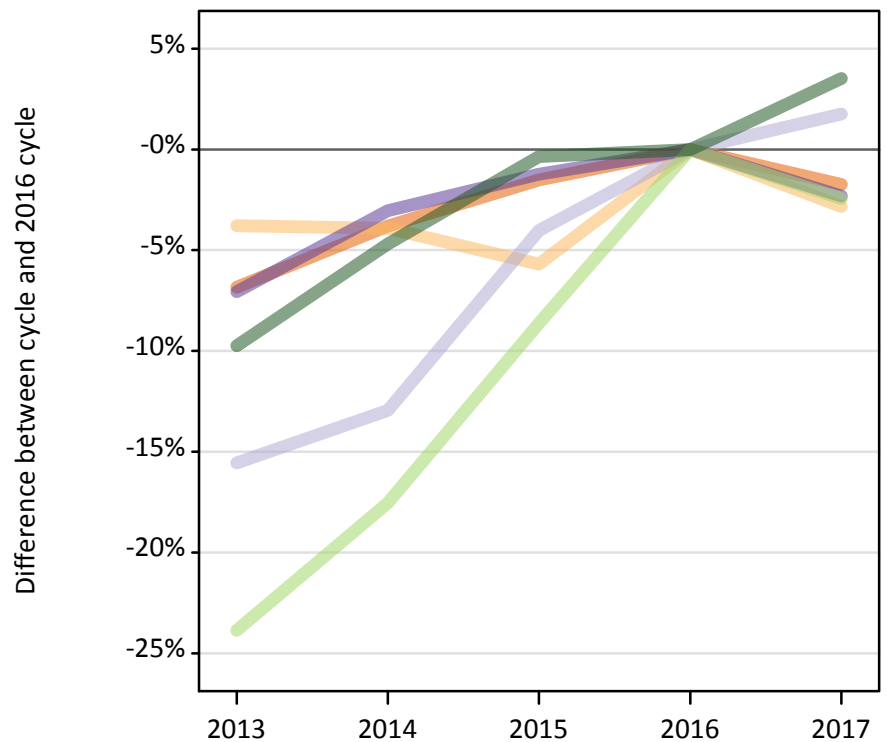
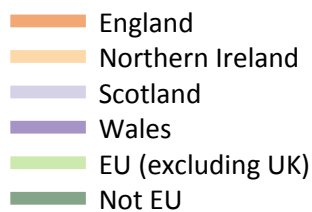
B.15 Placed applicants at 6 days after A level results day: providers in Wales

Selected applicant domiciles: difference between cycle and 2016 cycle (at 6 days after A level results day)

Domicile of applicant	2013	2014	2015	2016	2017
England	-4%	-2%	-3%	0%	-2%
Wales	-2%	-2%	-1%	0%	-2%
EU (excluding UK)	-32%	-25%	-11%	0%	6%
Not EU	5%	12%	4%	0%	-1%

B.16 Placed applicants at 6 days after A level results day: providers in the UK

Selected applicant domiciles: difference between cycle and 2016 cycle (at 6 days after A level results day)



B.17 Placed applicants at 6 days after A level results day: providers in the UK

Placed applicants by domicile (at 6 days after A level results day)

Domicile of applicant	2013	2014	2015	2016	2017
England	328,990	339,690	347,800	353,130	346,970
Northern Ireland	13,210	13,200	12,950	13,730	13,350
Scotland	27,800	28,660	31,600	32,920	33,500
Wales	17,400	18,150	18,490	18,720	18,290
EU (excluding UK)	21,960	23,790	26,360	28,850	28,140
Not EU	29,580	31,240	32,660	32,770	33,930

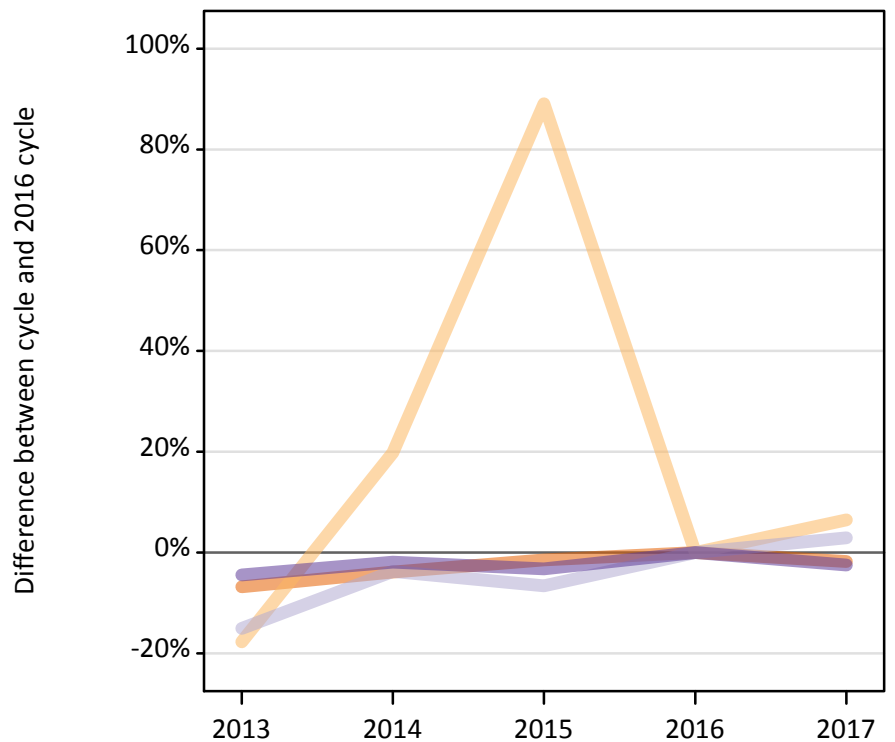
B.18 Placed applicants at 6 days after A level results day: providers in the UK

Selected applicant domiciles: difference between cycle and 2016 cycle (at 6 days after A level results day)

Domicile of applicant	2013	2014	2015	2016	2017
England	-7%	-4%	-2%	0%	-2%
Northern Ireland	-4%	-4%	-6%	0%	-3%
Scotland	-16%	-13%	-4%	0%	2%
Wales	-7%	-3%	-1%	0%	-2%
EU (excluding UK)	-24%	-18%	-9%	0%	-2%
Not EU	-10%	-5%	-0%	0%	4%

B.19 Placed applicants at 6 days after A level results day: domiciled in England

Selected provider countries: difference between cycle and 2016 cycle (at 6 days after A level results day)



B.20 Placed applicants at 6 days after A level results day: domiciled in England

Placed applicants by provider country (at 6 days after A level results day)

Country of provider	2013	2014	2015	2016	2017
England	314,640	324,420	332,610	337,540	331,480
Northern Ireland	240	350	550	290	310
Scotland	4,100	4,650	4,510	4,830	4,970
Wales	10,000	10,270	10,130	10,470	10,210

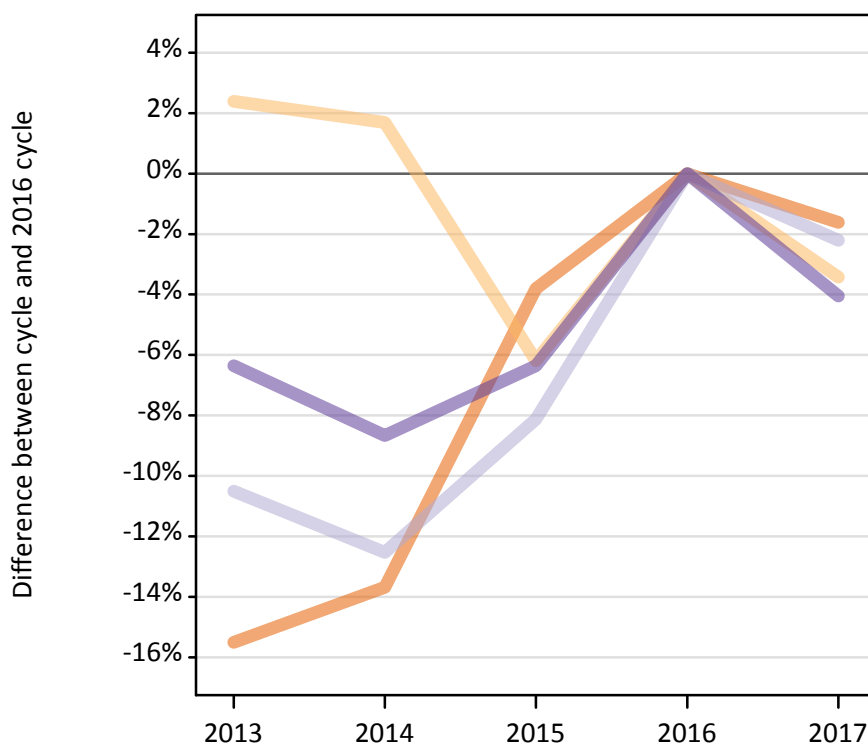
B.21 Placed applicants at 6 days after A level results day: domiciled in England

Selected provider countries: difference between cycle and 2016 cycle (at 6 days after A level results day)

Country of provider	2013	2014	2015	2016	2017
England	-7%	-4%	-1%	0%	-2%
Northern Ireland	-18%	20%	89%	0%	6%
Scotland	-15%	-4%	-7%	0%	3%
Wales	-4%	-2%	-3%	0%	-2%

B.22 Placed applicants at 6 days after A level results day: domiciled in Northern Ireland

Selected provider countries: difference between cycle and 2016 cycle (at 6 days after A level results day)



B.23 Placed applicants at 6 days after A level results day: domiciled in Northern Ireland

Placed applicants by provider country (at 6 days after A level results day)

Country of provider	2013	2014	2015	2016	2017
England	3,240	3,310	3,690	3,840	3,780
Northern Ireland	8,800	8,740	8,060	8,590	8,300
Scotland	1,010	990	1,040	1,130	1,110
Wales	160	160	160	170	170

B.24 Placed applicants at 6 days after A level results day: domiciled in Northern Ireland

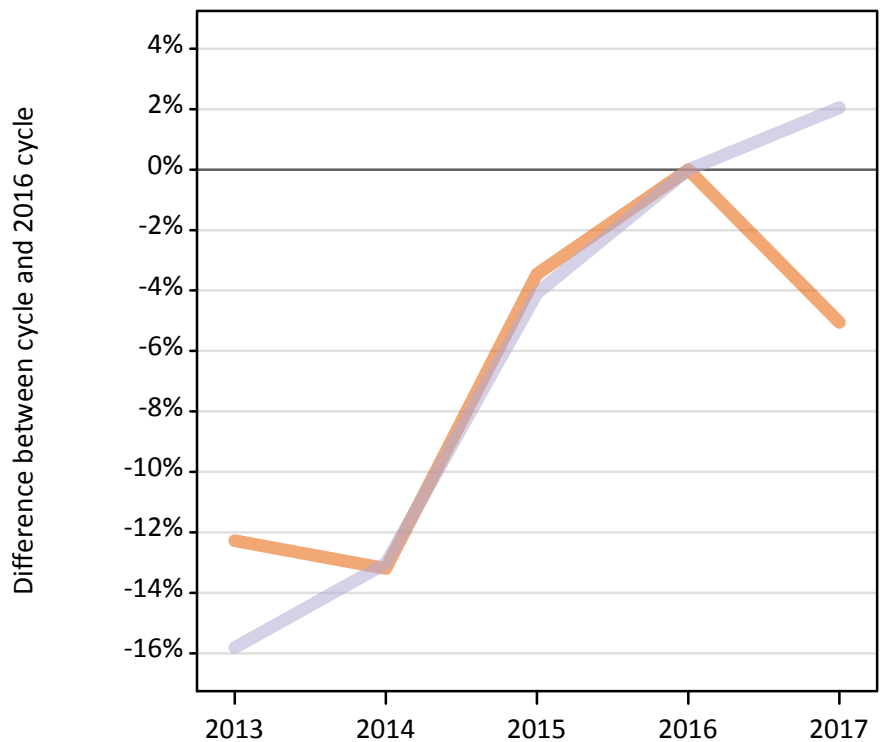
Selected provider countries: difference between cycle and 2016 cycle (at 6 days after A level results day)

Country of provider	2013	2014	2015	2016	2017
England	-16%	-14%	-4%	0%	-2%
Northern Ireland	2%	2%	-6%	0%	-3%
Scotland	-11%	-13%	-8%	0%	-2%
Wales	-6%	-9%	-6%	0%	-4%

B.25 Placed applicants at 6 days after A level results day: domiciled in Scotland

Selected provider countries: difference between cycle and 2016 cycle (at 6 days after A level results day)

England
Scotland



B.26 Placed applicants at 6 days after A level results day: domiciled in Scotland

Placed applicants by provider country (at 6 days after A level results day)

Country of provider	2013	2014	2015	2016	2017
England	1,420	1,410	1,570	1,620	1,540
Northern Ireland	10	20	20	20	30
Scotland	26,310	27,180	29,970	31,250	31,890
Wales	60	60	50	40	50

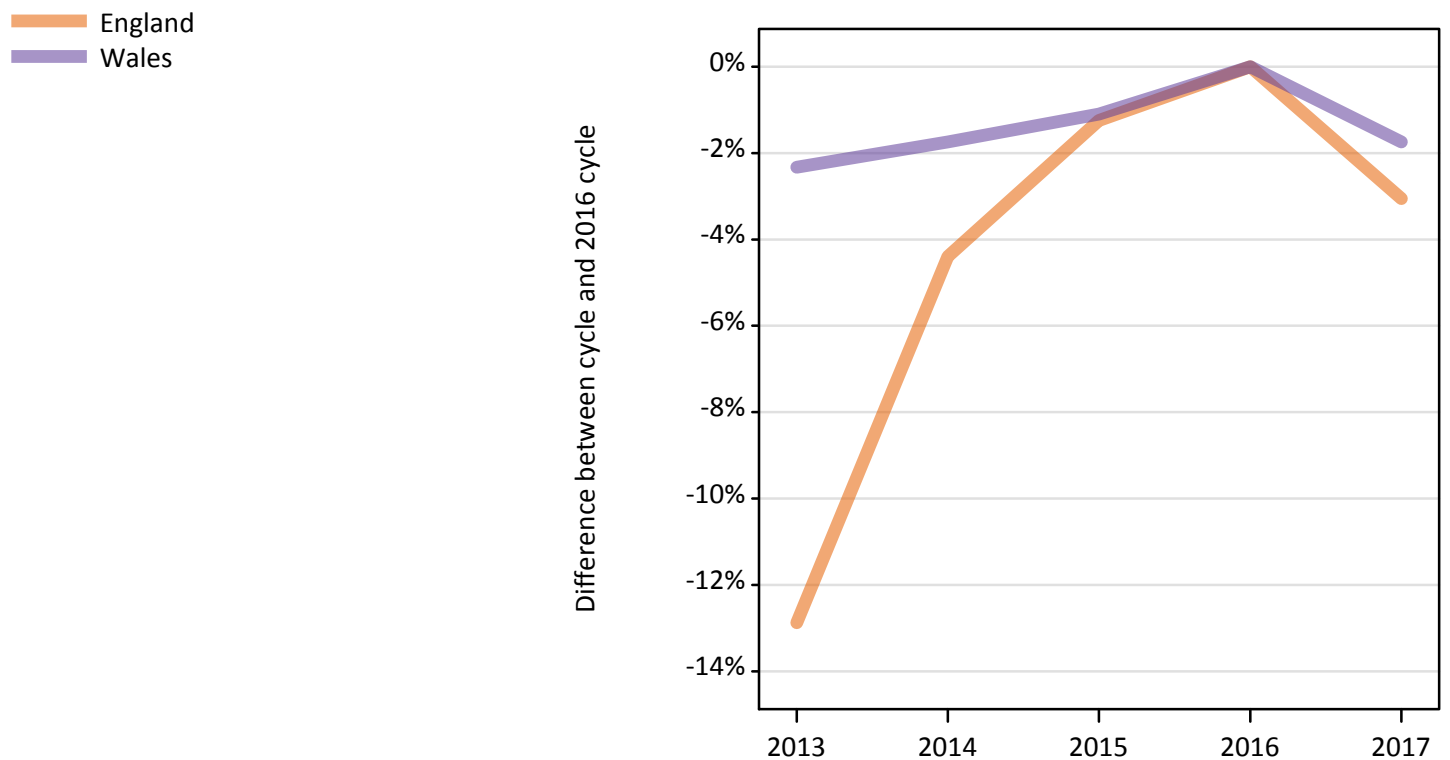
B.27 Placed applicants at 6 days after A level results day: domiciled in Scotland

Selected provider countries: difference between cycle and 2016 cycle (at 6 days after A level results day)

Country of provider	2013	2014	2015	2016	2017
England	-12%	-13%	-3%	0%	-5%
Scotland	-16%	-13%	-4%	0%	2%

B.28 Placed applicants at 6 days after A level results day: domiciled in Wales

Selected provider countries: difference between cycle and 2016 cycle (at 6 days after A level results day)



B.29 Placed applicants at 6 days after A level results day: domiciled in Wales

Placed applicants by provider country (at 6 days after A level results day)

Country of provider	2013	2014	2015	2016	2017
England	7,050	7,740	7,990	8,100	7,850
Northern Ireland	0	10	10	10	10
Scotland	100	100	110	130	130
Wales	10,240	10,300	10,370	10,480	10,300

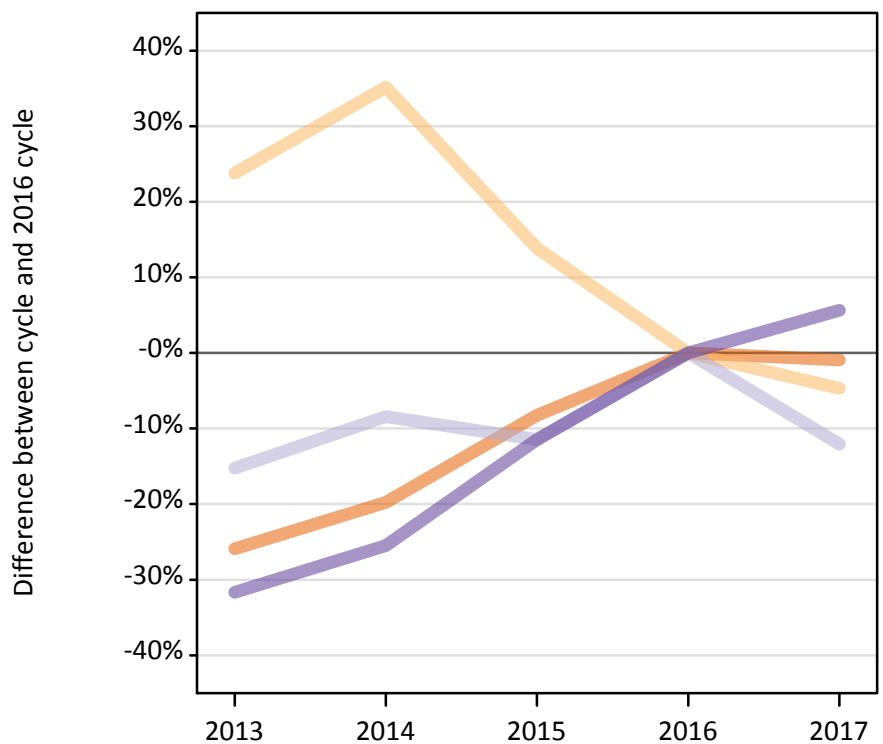
B.30 Placed applicants at 6 days after A level results day: domiciled in Wales

Selected provider countries: difference between cycle and 2016 cycle (at 6 days after A level results day)

Country of provider	2013	2014	2015	2016	2017
England	-13%	-4%	-1%	0%	-3%
Wales	-2%	-2%	-1%	0%	-2%

B.31 Placed applicants at 6 days after A level results day: domiciled in EU (excluding UK)

Selected provider countries: difference between cycle and 2016 cycle (at 6 days after A level results day)



B.32 Placed applicants at 6 days after A level results day: domiciled in EU (excluding UK)

Placed applicants by provider country (at 6 days after A level results day)

Country of provider	2013	2014	2015	2016	2017
England	16,750	18,140	20,740	22,610	22,400
Northern Ireland	450	490	410	360	340
Scotland	3,870	4,190	4,050	4,570	4,020
Wales	890	970	1,160	1,310	1,380

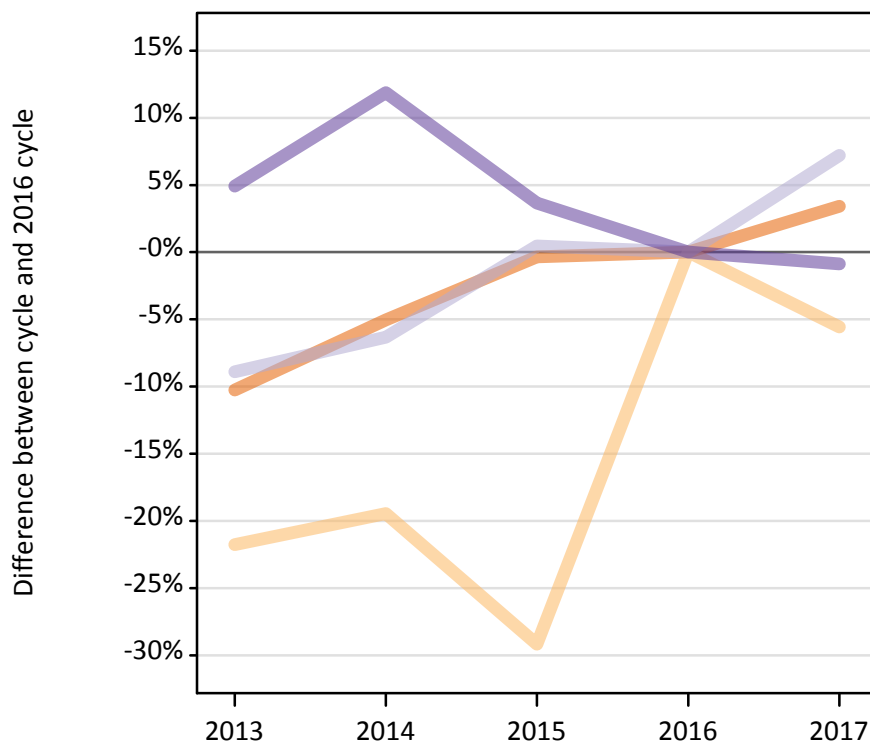
B.33 Placed applicants at 6 days after A level results day: domiciled in EU (excluding UK)

Selected provider countries: difference between cycle and 2016 cycle (at 6 days after A level results day)

Country of provider	2013	2014	2015	2016	2017
England	-26%	-20%	-8%	0%	-1%
Northern Ireland	24%	35%	14%	0%	-5%
Scotland	-15%	-8%	-11%	0%	-12%
Wales	-32%	-25%	-11%	0%	6%

B.34 Placed applicants at 6 days after A level results day: domiciled in Not EU

Selected provider countries: difference between cycle and 2016 cycle (at 6 days after A level results day)



B.35 Placed applicants at 6 days after A level results day: domiciled in Not EU

Placed applicants by provider country (at 6 days after A level results day)

Country of provider	2013	2014	2015	2016	2017
England	25,990	27,500	28,860	28,960	29,950
Northern Ireland	170	170	150	220	200
Scotland	2,340	2,400	2,580	2,570	2,750
Wales	1,090	1,160	1,070	1,040	1,030

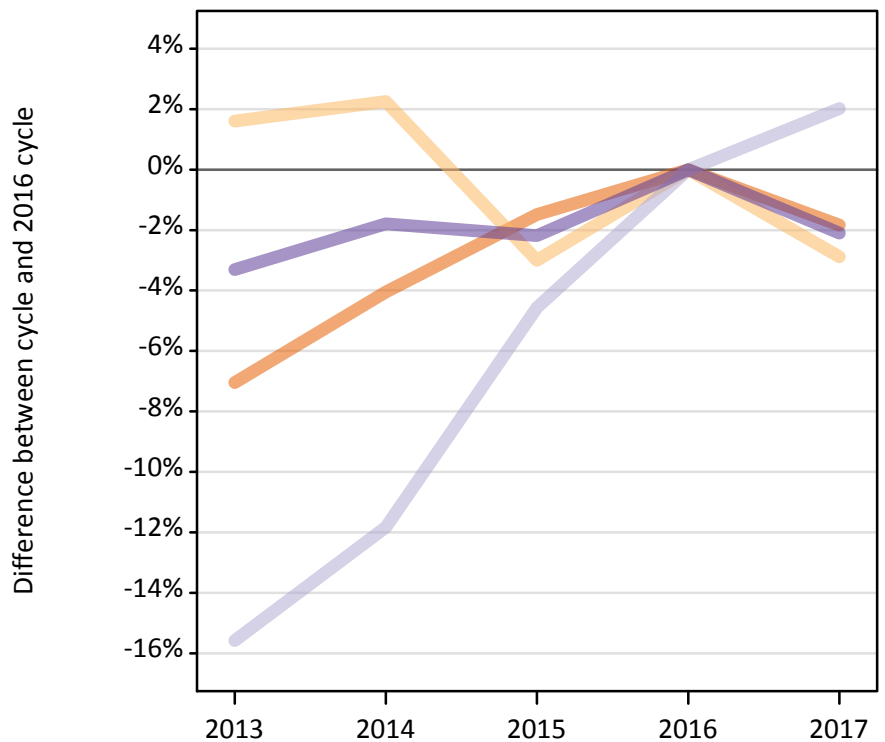
B.36 Placed applicants at 6 days after A level results day: domiciled in Not EU

Selected provider countries: difference between cycle and 2016 cycle (at 6 days after A level results day)

Country of provider	2013	2014	2015	2016	2017
England	-10%	-5%	-0%	0%	3%
Northern Ireland	-22%	-19%	-29%	0%	-6%
Scotland	-9%	-6%	0%	0%	7%
Wales	5%	12%	4%	0%	-1%

B.37 Placed applicants at 6 days after A level results day: domiciled in UK

Selected provider countries: difference between cycle and 2016 cycle (at 6 days after A level results day)



B.38 Placed applicants at 6 days after A level results day: domiciled in UK

Placed applicants by provider country (at 6 days after A level results day)

Country of provider	2013	2014	2015	2016	2017
England	326,360	336,880	345,860	351,090	344,640
Northern Ireland	9,050	9,110	8,640	8,910	8,650
Scotland	31,520	32,920	35,630	37,340	38,090
Wales	20,470	20,790	20,700	21,170	20,720

B.39 Placed applicants at 6 days after A level results day: domiciled in UK

Selected provider countries: difference between cycle and 2016 cycle (at 6 days after A level results day)

Country of provider	2013	2014	2015	2016	2017
England	-7%	-4%	-1%	0%	-2%
Northern Ireland	2%	2%	-3%	0%	-3%
Scotland	-16%	-12%	-5%	0%	2%
Wales	-3%	-2%	-2%	0%	-2%