

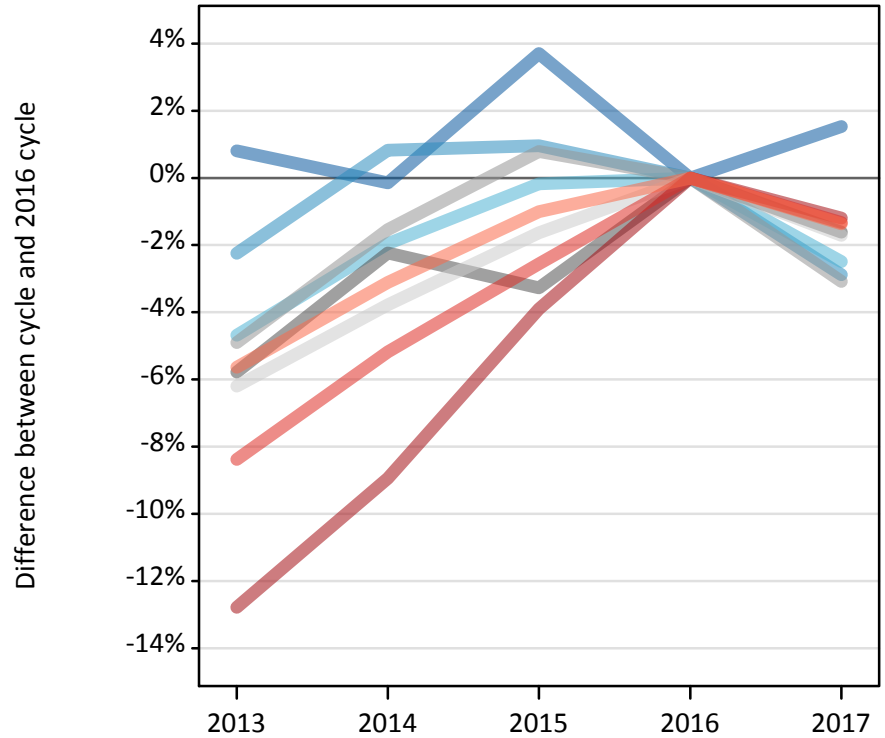
Daily Clearing Analysis: Region

Analysis at 00:05 on Thursday 24 August 2017 (7 days after A level results day)

R.1 Placed applicants by region of domicile: 7 days after A level results day

Placed applicants: change relative to 2016 cycle totals

- North East
- North West
- Yorkshire and The Humber
- East Midlands
- West Midlands
- East of England
- London
- South East
- South West



R.2 Placed applicants by region of domicile: 7 days after A level results day

Applicant Status	Domicile	2013	2014	2015	2016	2017
Placed	North East	14,950	14,810	15,390	14,840	15,060
	North West	45,160	46,580	46,640	46,200	44,870
	Yorkshire and The Humber	30,990	31,880	32,460	32,510	31,700
	East Midlands	26,110	27,090	26,800	27,710	27,260
	West Midlands	35,610	36,870	37,740	37,440	36,290
	East of England	34,820	35,720	36,520	37,130	36,490
	London	60,130	62,780	66,250	68,940	68,120
	South East	53,710	55,580	57,120	58,620	57,840
	South West	30,980	31,810	32,500	32,830	32,380
	(England total)	332,450	343,110	351,400	356,210	350,000
	Scotland	27,940	28,810	31,700	33,060	33,670
	Northern Ireland	13,440	13,470	13,160	14,020	13,590
	Wales	17,550	18,290	18,630	18,840	18,410
	UK	391,380	403,690	414,900	422,130	415,680

R.3 Placed applicants by region of domicile: 7 days after A level results day

Placed applicants: change relative to 2016 cycle totals

Applicant Status	Domicile	2013	2014	2015	2016	2017
Placed	North East	1%	-0%	4%	0%	2%
	North West	-2%	1%	1%	0%	-3%
	Yorkshire and The Humber	-5%	-2%	-0%	0%	-2%
	East Midlands	-6%	-2%	-3%	0%	-2%
	West Midlands	-5%	-2%	1%	0%	-3%
	East of England	-6%	-4%	-2%	0%	-2%
	London	-13%	-9%	-4%	0%	-1%
	South East	-8%	-5%	-3%	0%	-1%
	South West	-6%	-3%	-1%	0%	-1%
	(England total)	-7%	-4%	-1%	0%	-2%
	Scotland	-16%	-13%	-4%	0%	2%
	Northern Ireland	-4%	-4%	-6%	0%	-3%
	Wales	-7%	-3%	-1%	0%	-2%
	UK	-7%	-4%	-2%	0%	-2%

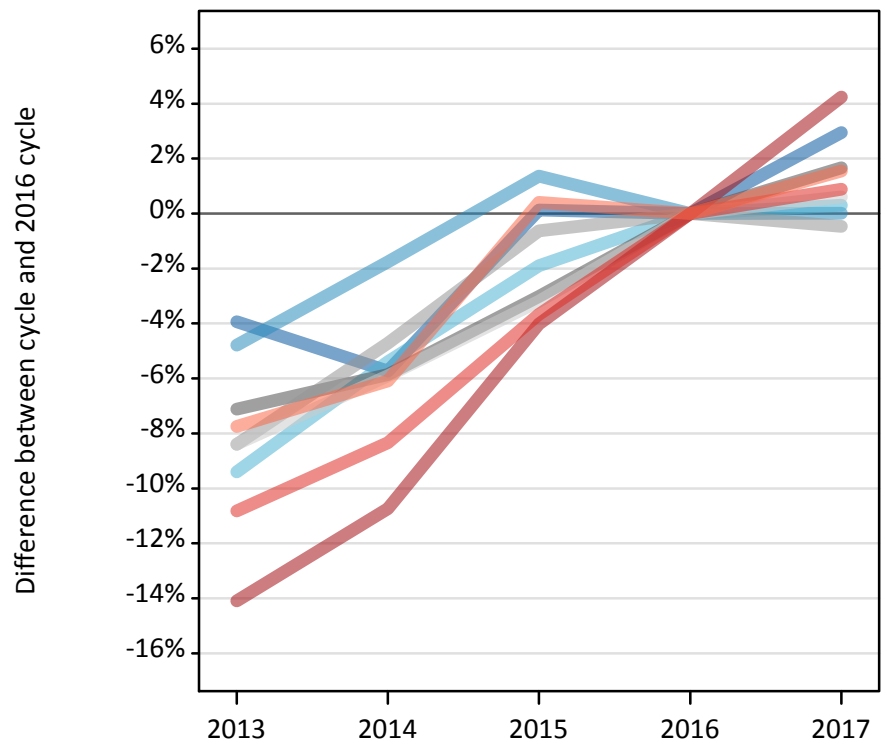
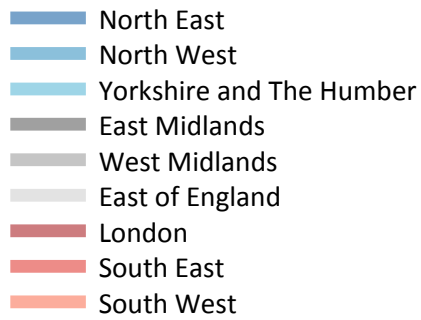
R.4 Placed applicants by region of domicile: 7 days after A level results day

Placed applicants: absolute change relative to 2016 cycle totals

Applicant Status	Domicile	2013	2014	2015	2016	2017
Placed	North East	120	-20	550	0	230
	North West	-1,040	380	440	0	-1,330
	Yorkshire and The Humber	-1,520	-640	-60	0	-810
	East Midlands	-1,600	-620	-910	0	-450
	West Midlands	-1,840	-580	300	0	-1,160
	East of England	-2,300	-1,400	-610	0	-640
	London	-8,820	-6,160	-2,690	0	-830
	South East	-4,910	-3,040	-1,500	0	-780
	South West	-1,850	-1,020	-330	0	-450
	(England total)	-23,760	-13,090	-4,800	0	-6,200
	Scotland	-5,130	-4,250	-1,360	0	610
	Northern Ireland	-580	-550	-850	0	-430
	Wales	-1,290	-550	-210	0	-430
	UK	-30,750	-18,440	-7,230	0	-6,450

R.5 Placed 18 year old applicants by region of domicile: 7 days after A level results day

Placed 18 year old applicants: change relative to 2016 cycle totals



R.6 Placed 18 year old applicants by region of domicile: 7 days after A level results day

Applicant Status	Domicile	2013	2014	2015	2016	2017
Placed	North East	7,960	7,810	8,290	8,280	8,530
	North West	25,100	25,890	26,720	26,360	26,360
	Yorkshire and The Humber	17,090	17,850	18,510	18,860	18,920
	East Midlands	14,740	14,930	15,380	15,860	16,130
	West Midlands	19,260	20,040	20,900	21,030	20,930
	East of England	20,710	21,270	21,880	22,600	22,740
	London	30,770	31,980	34,390	35,830	37,340
	South East	30,990	31,850	33,470	34,750	35,050
	South West	15,810	16,100	17,210	17,140	17,410
	(England total)	182,420	187,710	196,750	200,710	203,410
	Scotland	14,060	14,270	14,380	14,630	14,610
	Northern Ireland	8,370	8,190	8,060	8,320	8,220
	Wales	9,530	9,900	10,330	10,480	10,150
	UK	214,380	220,070	229,520	234,150	236,390

R.7 Placed 18 year old applicants by region of domicile: 7 days after A level results day

Placed 18 year old applicants: change relative to 2016 cycle totals

Applicant Status	Domicile	2013	2014	2015	2016	2017
Placed	North East	-4%	-6%	0%	0%	3%
	North West	-5%	-2%	1%	0%	0%
	Yorkshire and The Humber	-9%	-5%	-2%	0%	0%
	East Midlands	-7%	-6%	-3%	0%	2%
	West Midlands	-8%	-5%	-1%	0%	-0%
	East of England	-8%	-6%	-3%	0%	1%
	London	-14%	-11%	-4%	0%	4%
	South East	-11%	-8%	-4%	0%	1%
	South West	-8%	-6%	0%	0%	2%
	(England total)	-9%	-6%	-2%	0%	1%
	Scotland	-4%	-2%	-2%	0%	-0%
	Northern Ireland	1%	-2%	-3%	0%	-1%
	Wales	-9%	-6%	-1%	0%	-3%
	UK	-8%	-6%	-2%	0%	1%

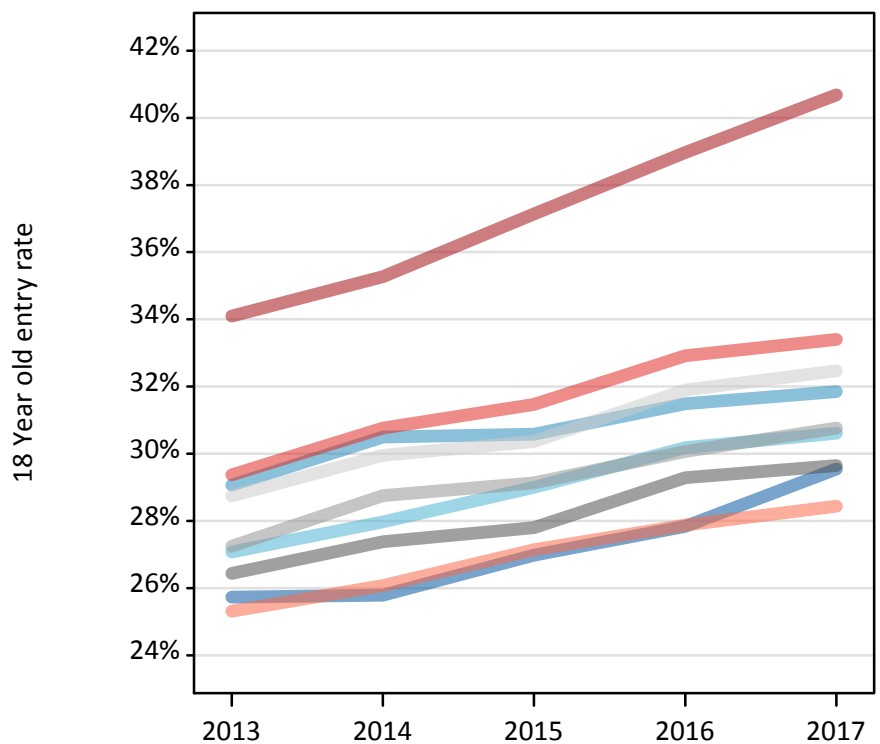
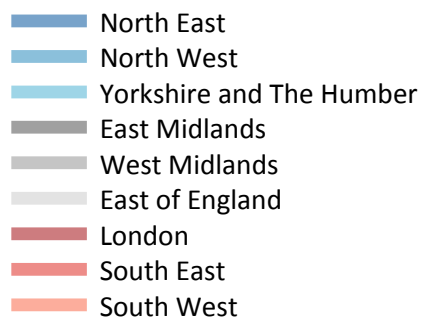
R.8 Placed 18 year old applicants by region of domicile: 7 days after A level results day

Placed 18 year old applicants: absolute change relative to 2016 cycle totals

Applicant Status	Domicile	2013	2014	2015	2016	2017
Placed	North East	-330	-480	10	0	240
	North West	-1,260	-460	360	0	0
	Yorkshire and The Humber	-1,770	-1,020	-360	0	60
	East Midlands	-1,130	-930	-480	0	260
	West Midlands	-1,770	-990	-130	0	-100
	East of England	-1,900	-1,340	-720	0	140
	London	-5,050	-3,850	-1,440	0	1,520
	South East	-3,760	-2,900	-1,270	0	310
	South West	-1,330	-1,050	70	0	270
	(England total)	-18,290	-13,000	-3,960	0	2,700
	Scotland	-570	-360	-260	0	-30
	Northern Ireland	50	-130	-260	0	-100
	Wales	-960	-580	-160	0	-330
	UK	-19,770	-14,080	-4,630	0	2,240

R.9 Placed 18 year old applicants by region of domicile: 7 days after A level results day

Placed 18 year old applicants: entry rate



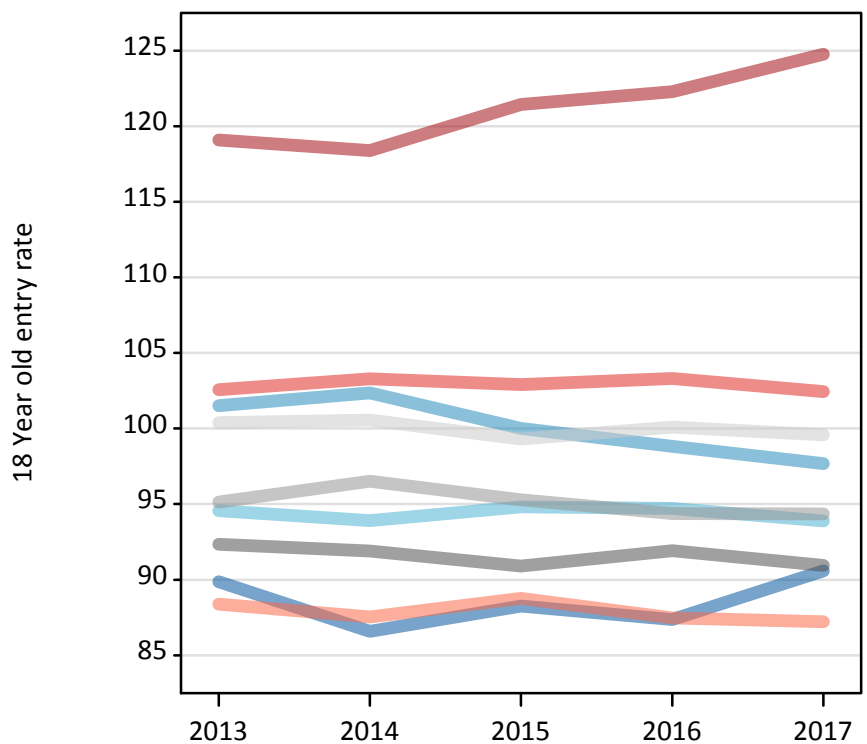
R.10 Placed 18 year old applicants by region of domicile: 7 days after A level results day

Placed 18 year old applicants: entry rate

Applicant Status	Domicile	2013	2014	2015	2016	2017
Placed	North East	25.7%	25.8%	27.0%	27.8%	29.5%
	North West	29.1%	30.5%	30.6%	31.5%	31.8%
	Yorkshire and The Humber	27.1%	28.0%	29.0%	30.2%	30.6%
	East Midlands	26.4%	27.4%	27.8%	29.3%	29.7%
	West Midlands	27.2%	28.8%	29.1%	30.1%	30.8%
	East of England	28.7%	30.0%	30.4%	31.9%	32.5%
	London	34.1%	35.3%	37.1%	39.0%	40.7%
	South East	29.4%	30.8%	31.5%	32.9%	33.4%
	South West	25.3%	26.1%	27.1%	27.9%	28.4%
	(England total)	28.6%	29.8%	30.6%	31.9%	32.6%
	Scotland	22.8%	23.3%	23.9%	24.9%	25.5%
	Northern Ireland	34.2%	33.7%	32.5%	34.0%	34.0%
	Wales	25.2%	26.4%	27.4%	28.9%	28.6%
	UK	28.2%	29.2%	30.0%	31.2%	31.9%

R.11 Placed 18 year old applicants by region of domicile: 7 days after A level results day

Placed 18 year old applicants: entry rates (indexed to 100 = England)



R.12 Placed 18 year old applicants by region of domicile: 7 days after A level results day

Placed 18 year old applicants: entry rate (indexed to 100 = England)

Applicant Status	Domicile	2013	2014	2015	2016	2017
Placed	North East	90	87	88	87	91
	North West	102	102	100	99	98
	Yorkshire and The Humber	95	94	95	95	94
	East Midlands	92	92	91	92	91
	West Midlands	95	97	95	94	94
	East of England	100	101	99	100	100
	London	119	118	121	122	125
	South East	103	103	103	103	102
	South West	88	88	89	87	87
	(England total)	100	100	100	100	100