

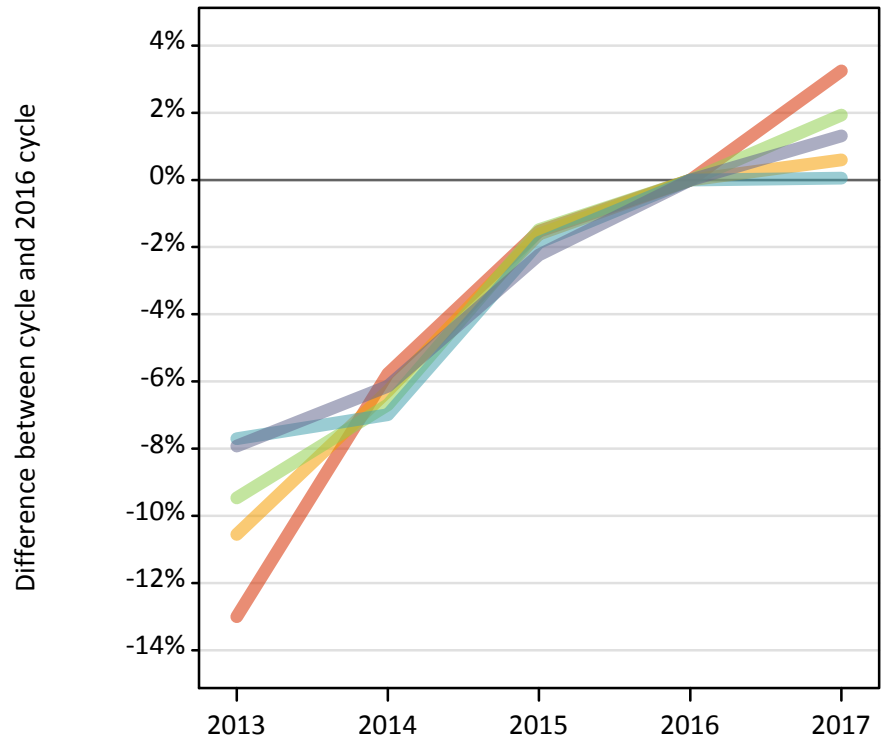
Daily Clearing Analysis: POLAR3

Analysis at 00:05 on Friday 25 August 2017 (8 days after A level results day)

P.1 Placed 18 year old applicants from England by POLAR3 quintile: 8 days after A level results day

Placed 18 year old applicants: change relative to 2016 cycle totals

- Quintile 1
- Quintile 2
- Quintile 3
- Quintile 4
- Quintile 5



P.2 Placed 18 year old applicants from England by POLAR3 quintile: 8 days after A level results day

| Applicant Status | POLAR3 | 2013 | 2014 | 2015 | 2016 | 2017 |
|------------------|------------|--------|--------|--------|--------|--------|
| Placed | Quintile 1 | 19,180 | 20,780 | 21,710 | 22,050 | 22,770 |
| | Quintile 2 | 27,920 | 29,250 | 30,710 | 31,210 | 31,400 |
| | Quintile 3 | 35,950 | 37,050 | 39,130 | 39,710 | 40,480 |
| | Quintile 4 | 43,050 | 43,390 | 45,780 | 46,650 | 46,670 |
| | Quintile 5 | 56,920 | 58,020 | 60,440 | 61,820 | 62,630 |

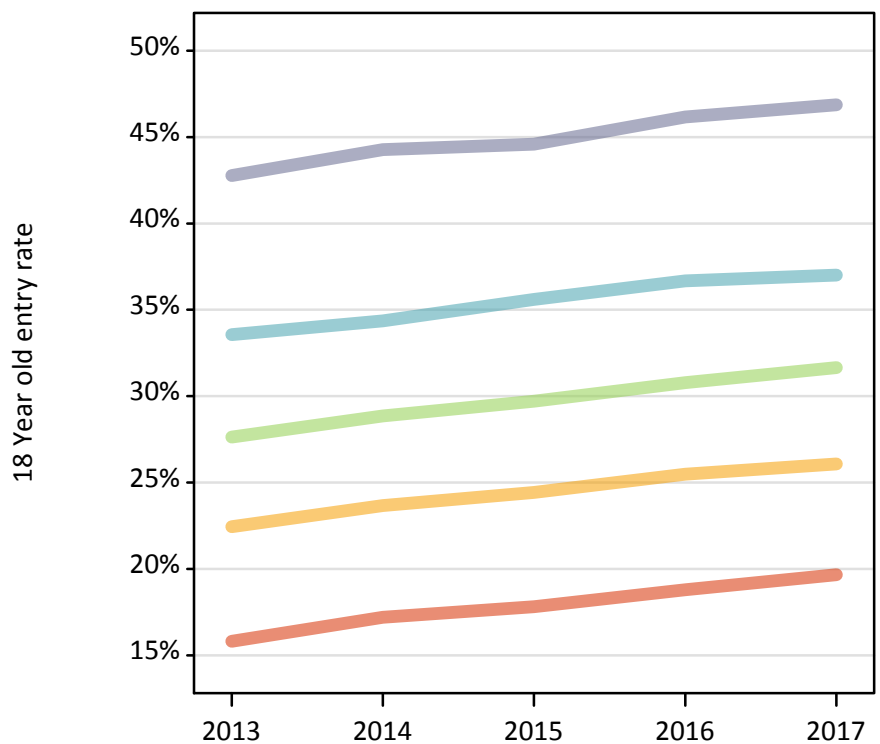
P.3 Placed 18 year old applicants from England by POLAR3 quintile: 8 days after A level results day

Placed 18 year old applicants: change relative to 2016 cycle totals

| Applicant Status | POLAR3 | 2013 | 2014 | 2015 | 2016 | 2017 |
|------------------|------------|------|------|------|------|------|
| Placed | Quintile 1 | -13% | -6% | -2% | 0% | 3% |
| | Quintile 2 | -11% | -6% | -2% | 0% | 1% |
| | Quintile 3 | -9% | -7% | -1% | 0% | 2% |
| | Quintile 4 | -8% | -7% | -2% | 0% | 0% |
| | Quintile 5 | -8% | -6% | -2% | 0% | 1% |

P.4 Placed 18 year old applicants from England by POLAR3 quintile: 8 days after A level results day

Placed 18 year old applicants: entry rate



P.5 Placed 18 year old applicants from England by POLAR3 quintile: 8 days after A level results day

Placed 18 year old applicants: entry rate

| Applicant Status | POLAR3 | 2013 | 2014 | 2015 | 2016 | 2017 |
|------------------|------------|-------|-------|-------|-------|-------|
| Placed | Quintile 1 | 15.8% | 17.2% | 17.8% | 18.8% | 19.7% |
| | Quintile 2 | 22.5% | 23.7% | 24.4% | 25.5% | 26.1% |
| | Quintile 3 | 27.6% | 28.9% | 29.7% | 30.8% | 31.6% |
| | Quintile 4 | 33.6% | 34.4% | 35.6% | 36.7% | 37.0% |
| | Quintile 5 | 42.8% | 44.3% | 44.6% | 46.2% | 46.9% |

P.6 Placed 18 year old applicants from England by POLAR3 quintile: 8 days after A level results day

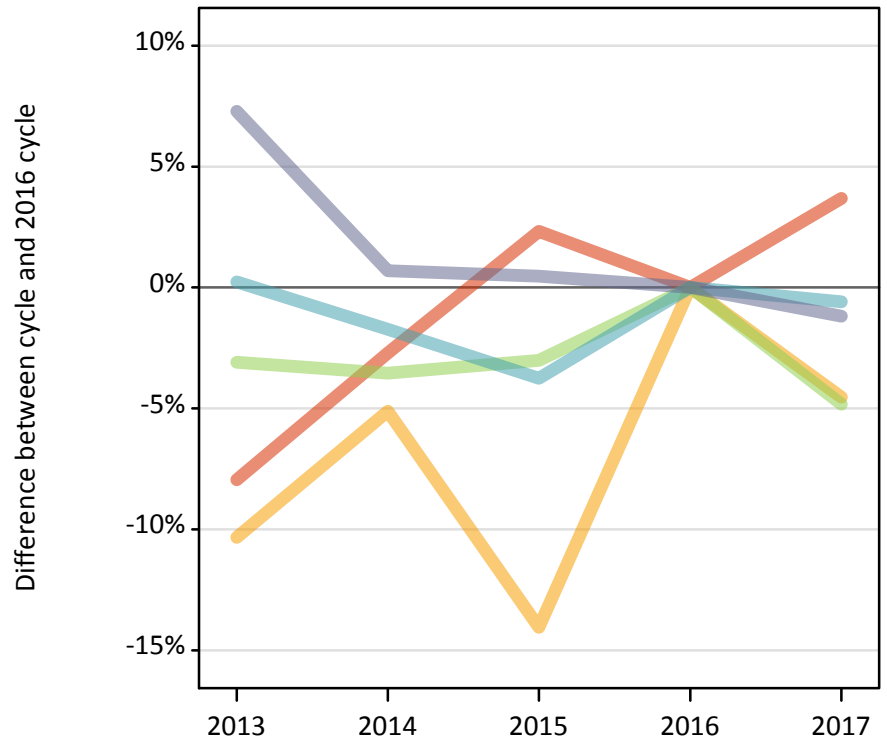
Placed 18 year old applicants: entry rate (indexed to 100 = Quintile 1)

| Applicant Status | POLAR3 | 2013 | 2014 | 2015 | 2016 | 2017 |
|------------------|------------|------|------|------|------|------|
| Placed | Quintile 1 | 100 | 100 | 100 | 100 | 100 |
| | Quintile 2 | 142 | 138 | 137 | 136 | 133 |
| | Quintile 3 | 175 | 168 | 167 | 164 | 161 |
| | Quintile 4 | 212 | 200 | 200 | 195 | 188 |
| | Quintile 5 | 270 | 258 | 250 | 246 | 238 |

P.7 Placed 18 year old applicants from Northern Ireland by POLAR3 quintile: 8 days after A level results day

Placed 18 year old applicants: change relative to 2016 cycle totals

- Quintile 1
- Quintile 2
- Quintile 3
- Quintile 4
- Quintile 5



P.8 Placed 18 year old applicants from Northern Ireland by POLAR3 quintile: 8 days after A level results day

| Applicant Status | POLAR3 | 2013 | 2014 | 2015 | 2016 | 2017 |
|------------------|------------|-------|-------|-------|-------|-------|
| Placed | Quintile 1 | 480 | 500 | 530 | 520 | 540 |
| | Quintile 2 | 770 | 820 | 740 | 860 | 820 |
| | Quintile 3 | 1,290 | 1,280 | 1,290 | 1,330 | 1,260 |
| | Quintile 4 | 2,560 | 2,510 | 2,460 | 2,560 | 2,540 |
| | Quintile 5 | 3,430 | 3,220 | 3,210 | 3,200 | 3,160 |

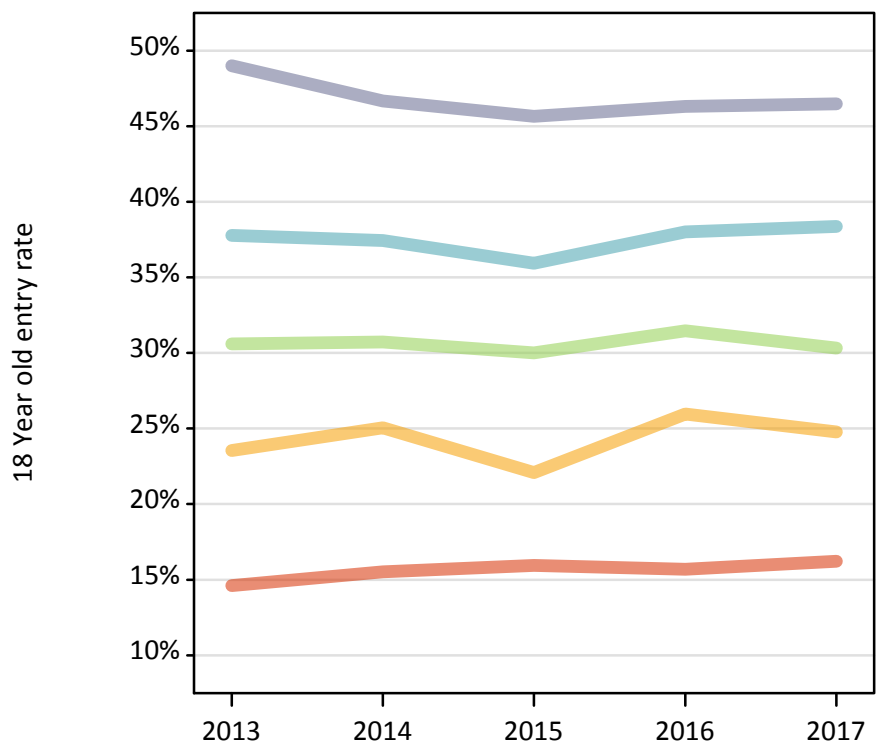
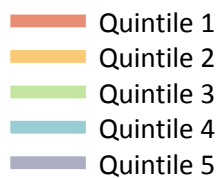
P.9 Placed 18 year old applicants from Northern Ireland by POLAR3 quintile: 8 days after A level results day

Placed 18 year old applicants: change relative to 2016 cycle totals

| Applicant Status | POLAR3 | 2013 | 2014 | 2015 | 2016 | 2017 |
|------------------|------------|------|------|------|------|------|
| Placed | Quintile 1 | -8% | -3% | 2% | 0% | 4% |
| | Quintile 2 | -10% | -5% | -14% | 0% | -5% |
| | Quintile 3 | -3% | -4% | -3% | 0% | -5% |
| | Quintile 4 | 0% | -2% | -4% | 0% | -1% |
| | Quintile 5 | 7% | 1% | 0% | 0% | -1% |

P.10 Placed 18 year old applicants from Northern Ireland by POLAR3 quintile: 8 days after A level results day

Placed 18 year old applicants: entry rate



P.11 Placed 18 year old applicants from Northern Ireland by POLAR3 quintile: 8 days after A level results day

Placed 18 year old applicants: entry rate

| Applicant Status | POLAR3 | 2013 | 2014 | 2015 | 2016 | 2017 |
|------------------|------------|-------|-------|-------|-------|-------|
| Placed | Quintile 1 | 14.6% | 15.5% | 15.9% | 15.7% | 16.2% |
| | Quintile 2 | 23.6% | 25.0% | 22.1% | 26.0% | 24.8% |
| | Quintile 3 | 30.6% | 30.7% | 30.0% | 31.5% | 30.3% |
| | Quintile 4 | 37.8% | 37.4% | 35.9% | 38.0% | 38.4% |
| | Quintile 5 | 49.0% | 46.7% | 45.6% | 46.3% | 46.5% |

P.12 Placed 18 year old applicants from Northern Ireland by POLAR3 quintile: 8 days after A level results day

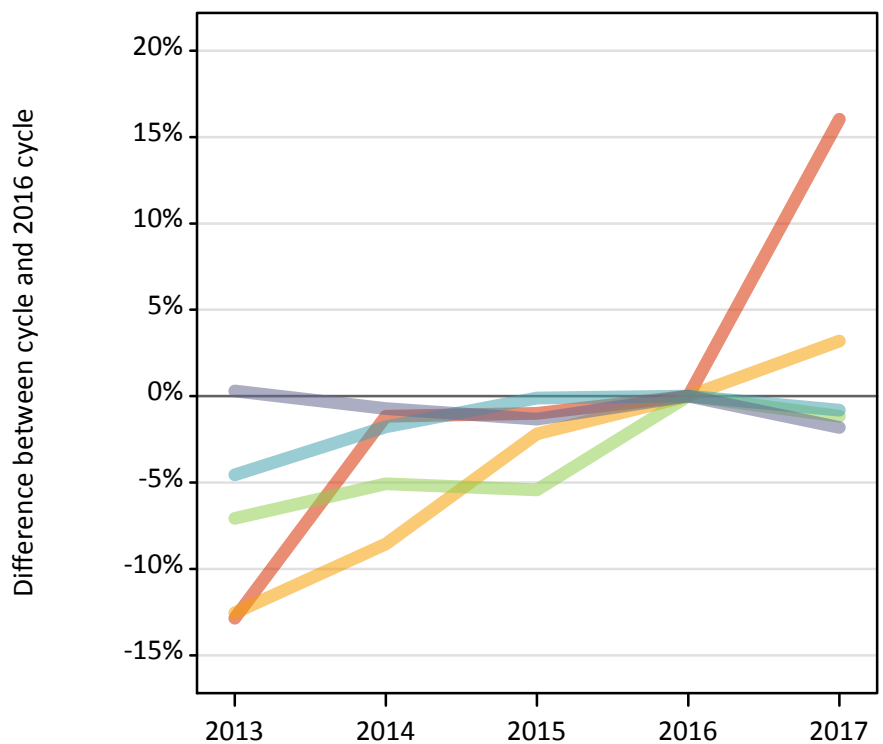
Placed 18 year old applicants: entry rate (indexed to 100 = Quintile 1)

| Applicant Status | POLAR3 | 2013 | 2014 | 2015 | 2016 | 2017 |
|------------------|------------|------|------|------|------|------|
| Placed | Quintile 1 | 100 | 100 | 100 | 100 | 100 |
| | Quintile 2 | 161 | 161 | 139 | 165 | 153 |
| | Quintile 3 | 209 | 198 | 188 | 200 | 187 |
| | Quintile 4 | 259 | 241 | 225 | 242 | 236 |
| | Quintile 5 | 335 | 301 | 286 | 295 | 286 |

P.13 Placed 18 year old applicants from Scotland by POLAR3 quintile: 8 days after A level results day

Placed 18 year old applicants: change relative to 2016 cycle totals

- Quintile 1
- Quintile 2
- Quintile 3
- Quintile 4
- Quintile 5



P.14 Placed 18 year old applicants from Scotland by POLAR3 quintile: 8 days after A level results day

| Applicant Status | POLAR3 | 2013 | 2014 | 2015 | 2016 | 2017 |
|------------------|------------|-------|-------|-------|-------|-------|
| Placed | Quintile 1 | 520 | 590 | 590 | 600 | 700 |
| | Quintile 2 | 1,320 | 1,380 | 1,470 | 1,510 | 1,560 |
| | Quintile 3 | 2,140 | 2,190 | 2,180 | 2,310 | 2,280 |
| | Quintile 4 | 3,280 | 3,370 | 3,430 | 3,430 | 3,400 |
| | Quintile 5 | 6,800 | 6,730 | 6,690 | 6,780 | 6,660 |

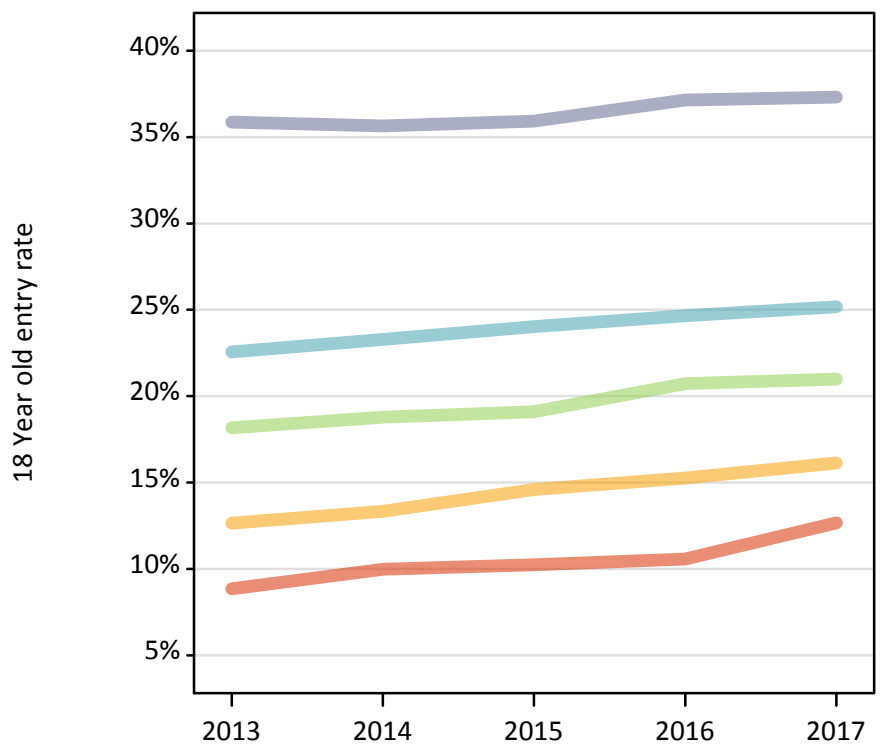
P.15 Placed 18 year old applicants from Scotland by POLAR3 quintile: 8 days after A level results day

Placed 18 year old applicants: change relative to 2016 cycle totals

| Applicant Status | POLAR3 | 2013 | 2014 | 2015 | 2016 | 2017 |
|------------------|------------|------|------|------|------|------|
| Placed | Quintile 1 | -13% | -1% | -1% | 0% | 16% |
| | Quintile 2 | -13% | -9% | -2% | 0% | 3% |
| | Quintile 3 | -7% | -5% | -5% | 0% | -1% |
| | Quintile 4 | -5% | -2% | -0% | 0% | -1% |
| | Quintile 5 | 0% | -1% | -1% | 0% | -2% |

P.16 Placed 18 year old applicants from Scotland by POLAR3 quintile: 8 days after A level results day

Placed 18 year old applicants: entry rate



P.17 Placed 18 year old applicants from Scotland by POLAR3 quintile: 8 days after A level results day

Placed 18 year old applicants: entry rate

| Applicant Status | POLAR3 | 2013 | 2014 | 2015 | 2016 | 2017 |
|------------------|------------|-------|-------|-------|-------|-------|
| Placed | Quintile 1 | 8.8% | 10.0% | 10.2% | 10.6% | 12.7% |
| | Quintile 2 | 12.7% | 13.3% | 14.6% | 15.3% | 16.1% |
| | Quintile 3 | 18.2% | 18.8% | 19.1% | 20.7% | 21.0% |
| | Quintile 4 | 22.6% | 23.3% | 24.0% | 24.6% | 25.2% |
| | Quintile 5 | 35.9% | 35.7% | 35.9% | 37.1% | 37.3% |

P.18 Placed 18 year old applicants from Scotland by POLAR3 quintile: 8 days after A level results day

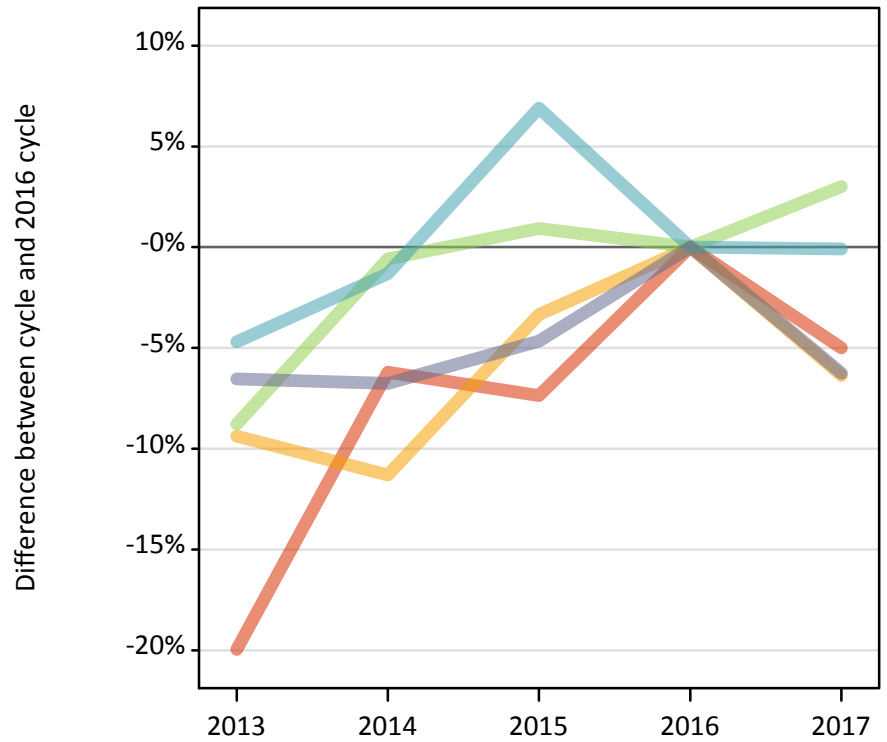
Placed 18 year old applicants: entry rate (indexed to 100 = Quintile 1)

| Applicant Status | POLAR3 | 2013 | 2014 | 2015 | 2016 | 2017 |
|------------------|------------|------|------|------|------|------|
| Placed | Quintile 1 | 100 | 100 | 100 | 100 | 100 |
| | Quintile 2 | 143 | 134 | 143 | 144 | 127 |
| | Quintile 3 | 205 | 188 | 186 | 196 | 166 |
| | Quintile 4 | 255 | 233 | 235 | 233 | 199 |
| | Quintile 5 | 405 | 357 | 351 | 351 | 294 |

P.19 Placed 18 year old applicants from Wales by POLAR3 quintile: 8 days after A level results day

Placed 18 year old applicants: change relative to 2016 cycle totals

- Quintile 1
- Quintile 2
- Quintile 3
- Quintile 4
- Quintile 5



P.20 Placed 18 year old applicants from Wales by POLAR3 quintile: 8 days after A level results day

| Applicant Status | POLAR3 | 2013 | 2014 | 2015 | 2016 | 2017 |
|------------------|------------|-------|-------|-------|-------|-------|
| Placed | Quintile 1 | 1,250 | 1,470 | 1,450 | 1,560 | 1,490 |
| | Quintile 2 | 1,980 | 1,940 | 2,110 | 2,190 | 2,050 |
| | Quintile 3 | 1,580 | 1,720 | 1,750 | 1,730 | 1,780 |
| | Quintile 4 | 2,120 | 2,190 | 2,370 | 2,220 | 2,220 |
| | Quintile 5 | 2,630 | 2,620 | 2,680 | 2,810 | 2,640 |

P.21 Placed 18 year old applicants from Wales by POLAR3 quintile: 8 days after A level results day

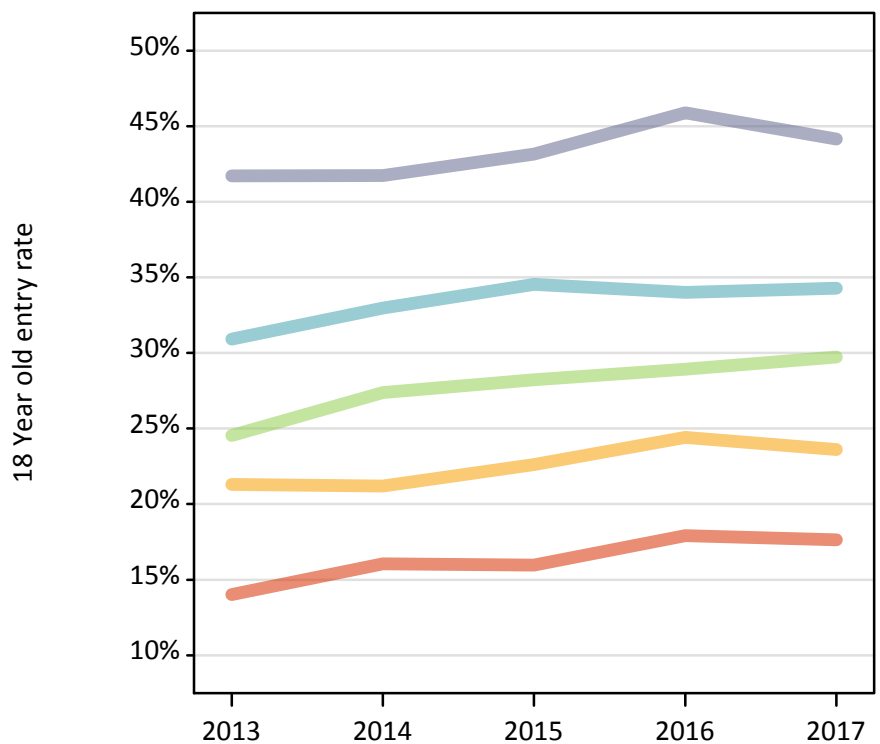
Placed 18 year old applicants: change relative to 2016 cycle totals

| Applicant Status | POLAR3 | 2013 | 2014 | 2015 | 2016 | 2017 |
|------------------|------------|------|------|------|------|------|
| Placed | Quintile 1 | -20% | -6% | -7% | 0% | -5% |
| | Quintile 2 | -9% | -11% | -3% | 0% | -6% |
| | Quintile 3 | -9% | -1% | 1% | 0% | 3% |
| | Quintile 4 | -5% | -1% | 7% | 0% | -0% |
| | Quintile 5 | -7% | -7% | -5% | 0% | -6% |

P.22 Placed 18 year old applicants from Wales by POLAR3 quintile: 8 days after A level results day

Placed 18 year old applicants: entry rate

- Quintile 1
- Quintile 2
- Quintile 3
- Quintile 4
- Quintile 5



P.23 Placed 18 year old applicants from Wales by POLAR3 quintile: 8 days after A level results day

Placed 18 year old applicants: entry rate

| Applicant Status | POLAR3 | 2013 | 2014 | 2015 | 2016 | 2017 |
|------------------|------------|-------|-------|-------|-------|-------|
| Placed | Quintile 1 | 14.0% | 16.0% | 16.0% | 17.9% | 17.6% |
| | Quintile 2 | 21.3% | 21.2% | 22.6% | 24.4% | 23.6% |
| | Quintile 3 | 24.5% | 27.4% | 28.2% | 28.9% | 29.7% |
| | Quintile 4 | 30.9% | 33.0% | 34.5% | 34.0% | 34.3% |
| | Quintile 5 | 41.7% | 41.7% | 43.2% | 45.9% | 44.2% |

P.24 Placed 18 year old applicants from Wales by POLAR3 quintile: 8 days after A level results day

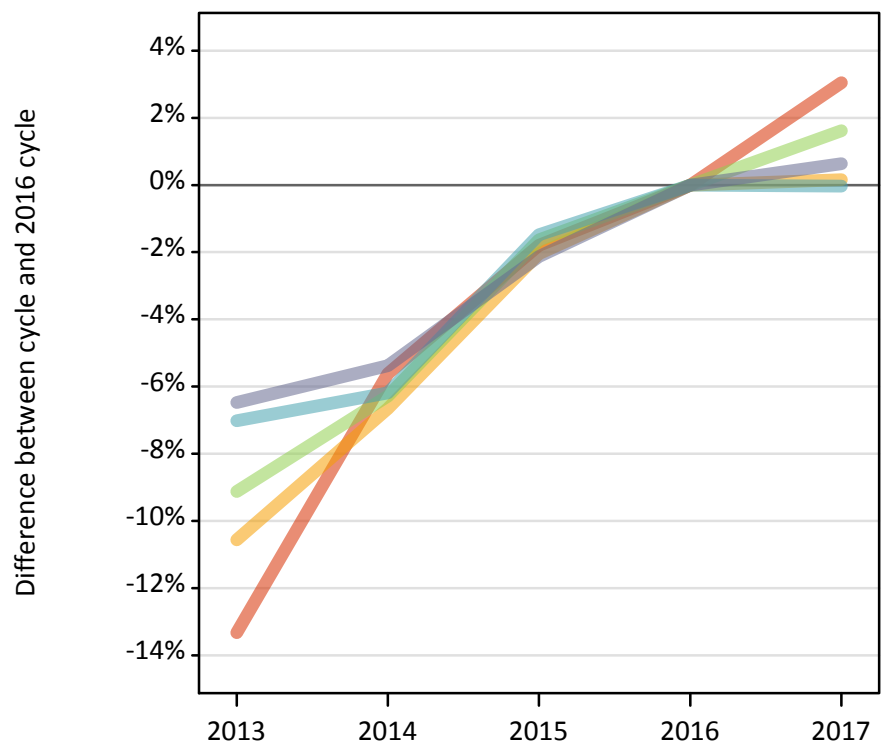
Placed 18 year old applicants: entry rate (indexed to 100 = Quintile 1)

| Applicant Status | POLAR3 | 2013 | 2014 | 2015 | 2016 | 2017 |
|------------------|------------|------|------|------|------|------|
| Placed | Quintile 1 | 100 | 100 | 100 | 100 | 100 |
| | Quintile 2 | 152 | 132 | 142 | 136 | 134 |
| | Quintile 3 | 175 | 171 | 177 | 161 | 169 |
| | Quintile 4 | 221 | 206 | 216 | 190 | 194 |
| | Quintile 5 | 298 | 260 | 270 | 256 | 250 |

P.25 Placed 18 year old applicants from the UK by POLAR3 quintile: 8 days after A level results day

Placed 18 year old applicants: change relative to 2016 cycle totals

- Quintile 1
- Quintile 2
- Quintile 3
- Quintile 4
- Quintile 5



P.26 Placed 18 year old applicants from the UK by POLAR3 quintile: 8 days after A level results day

| Applicant Status | POLAR3 | 2013 | 2014 | 2015 | 2016 | 2017 |
|------------------|------------|--------|--------|--------|--------|--------|
| Placed | Quintile 1 | 21,430 | 23,340 | 24,280 | 24,730 | 25,480 |
| | Quintile 2 | 31,990 | 33,390 | 35,040 | 35,770 | 35,820 |
| | Quintile 3 | 40,960 | 42,240 | 44,340 | 45,080 | 45,800 |
| | Quintile 4 | 51,000 | 51,460 | 54,040 | 54,850 | 54,830 |
| | Quintile 5 | 69,780 | 70,590 | 73,020 | 74,610 | 75,080 |

P.27 Placed 18 year old applicants from the UK by POLAR3 quintile: 8 days after A level results day

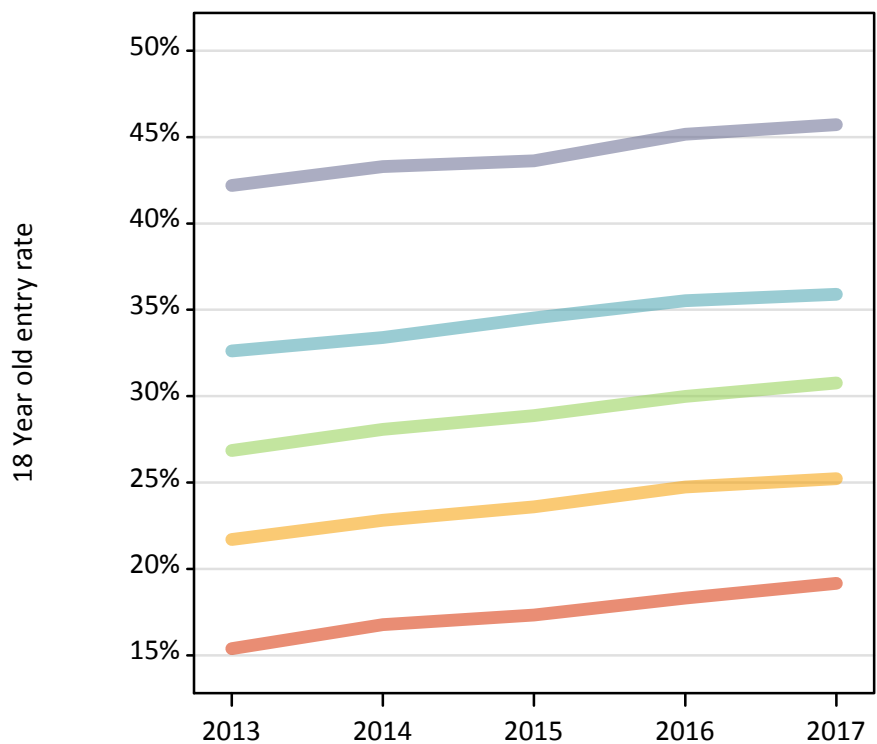
Placed 18 year old applicants: change relative to 2016 cycle totals

| Applicant Status | POLAR3 | 2013 | 2014 | 2015 | 2016 | 2017 |
|------------------|------------|------|------|------|------|------|
| Placed | Quintile 1 | -13% | -6% | -2% | 0% | 3% |
| | Quintile 2 | -11% | -7% | -2% | 0% | 0% |
| | Quintile 3 | -9% | -6% | -2% | 0% | 2% |
| | Quintile 4 | -7% | -6% | -1% | 0% | -0% |
| | Quintile 5 | -6% | -5% | -2% | 0% | 1% |

P.28 Placed 18 year old applicants from the UK by POLAR3 quintile: 8 days after A level results day

Placed 18 year old applicants: entry rate

- Quintile 1
- Quintile 2
- Quintile 3
- Quintile 4
- Quintile 5



P.29 Placed 18 year old applicants from the UK by POLAR3 quintile: 8 days after A level results day

Placed 18 year old applicants: entry rate

| Applicant Status | POLAR3 | 2013 | 2014 | 2015 | 2016 | 2017 |
|------------------|------------|-------|-------|-------|-------|-------|
| Placed | Quintile 1 | 15.4% | 16.8% | 17.3% | 18.3% | 19.2% |
| | Quintile 2 | 21.7% | 22.8% | 23.6% | 24.7% | 25.2% |
| | Quintile 3 | 26.9% | 28.1% | 28.9% | 30.0% | 30.8% |
| | Quintile 4 | 32.6% | 33.4% | 34.5% | 35.5% | 35.9% |
| | Quintile 5 | 42.2% | 43.3% | 43.6% | 45.2% | 45.7% |

P.30 Placed 18 year old applicants from the UK by POLAR3 quintile: 8 days after A level results day

Placed 18 year old applicants: entry rate (indexed to 100 = Quintile 1)

| Applicant Status | POLAR3 | 2013 | 2014 | 2015 | 2016 | 2017 |
|------------------|------------|------|------|------|------|------|
| Placed | Quintile 1 | 100 | 100 | 100 | 100 | 100 |
| | Quintile 2 | 141 | 136 | 136 | 135 | 132 |
| | Quintile 3 | 175 | 167 | 167 | 164 | 161 |
| | Quintile 4 | 212 | 199 | 199 | 194 | 187 |
| | Quintile 5 | 274 | 258 | 252 | 247 | 239 |