

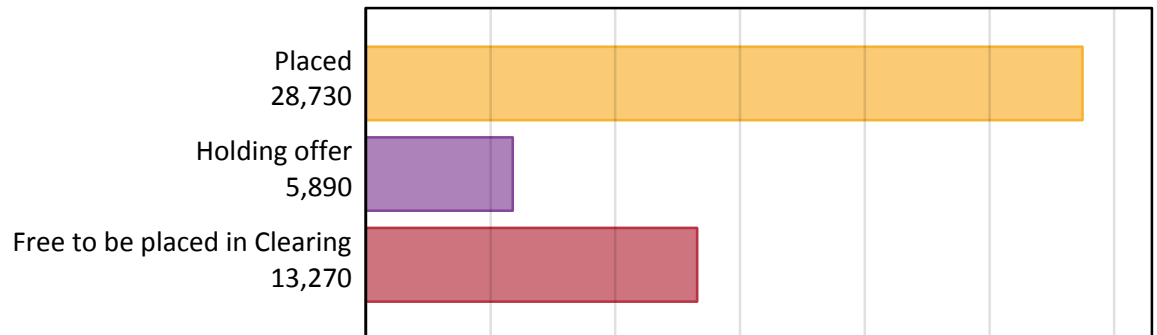
Daily Clearing Analysis: Overview

Analysis at 00:05 on Tuesday 29 August 2017 (12 days after A level results day)

A.1 Applicants by type and status from the EU - excluding UK, 2017 cycle

Applicant type	Status	2017
Main scheme	Placed (Clearing)	1,240
	Placed (Adjustment)	40
	Placed (Firm)	23,850
	Placed (Insurance)	2,090
	Placed (Other)	1,170
	Holding offer	5,890
	Free to be placed in Clearing	13,270
Direct to Clearing	Placed (Direct to Clearing)	340
	Other (Direct to Clearing)	340
All applicants	Placed	28,730

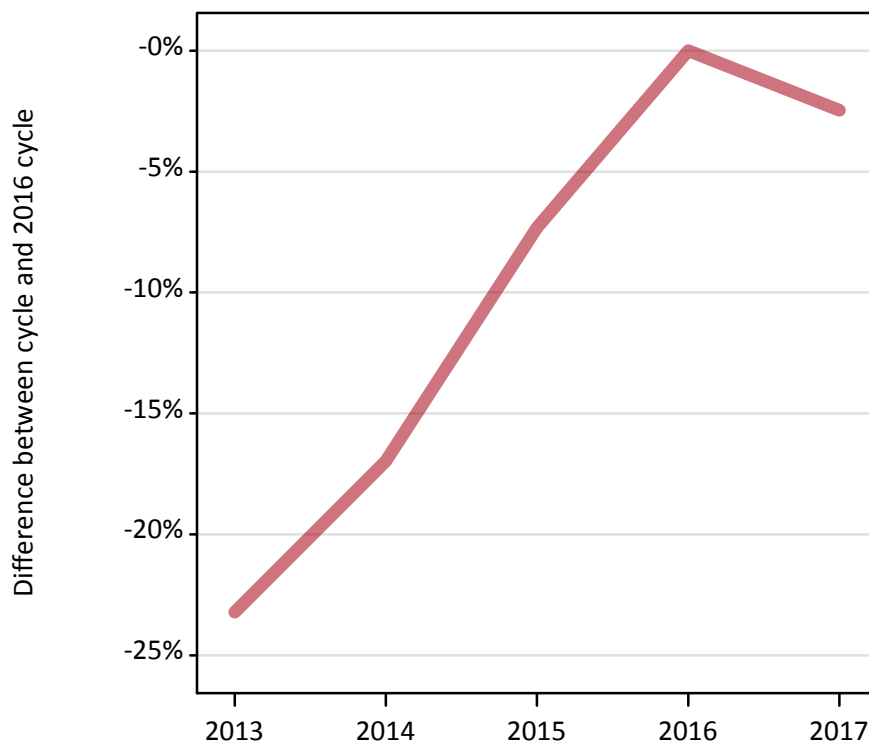
A.2 Summary of applicants who are placed, holding offers or free to be placed in Clearing (the EU - excluding UK)



A.3 All placed applicants from the EU - excluding UK: 12 days after A level results day

All placed applicants: difference between cycle and 2016 cycle

Placed



A.4 All placed applicants from the EU - excluding UK: 12 days after A level results day

All placed applicants: applicants at 12 days after A level results day

Applicant type	Status	2013	2014	2015	2016	2017
All applicants	Placed	22,620	24,460	27,300	29,460	28,730

A.5 All placed applicants from the EU - excluding UK: 12 days after A level results day

All placed applicants: difference between cycle and 2016 cycle

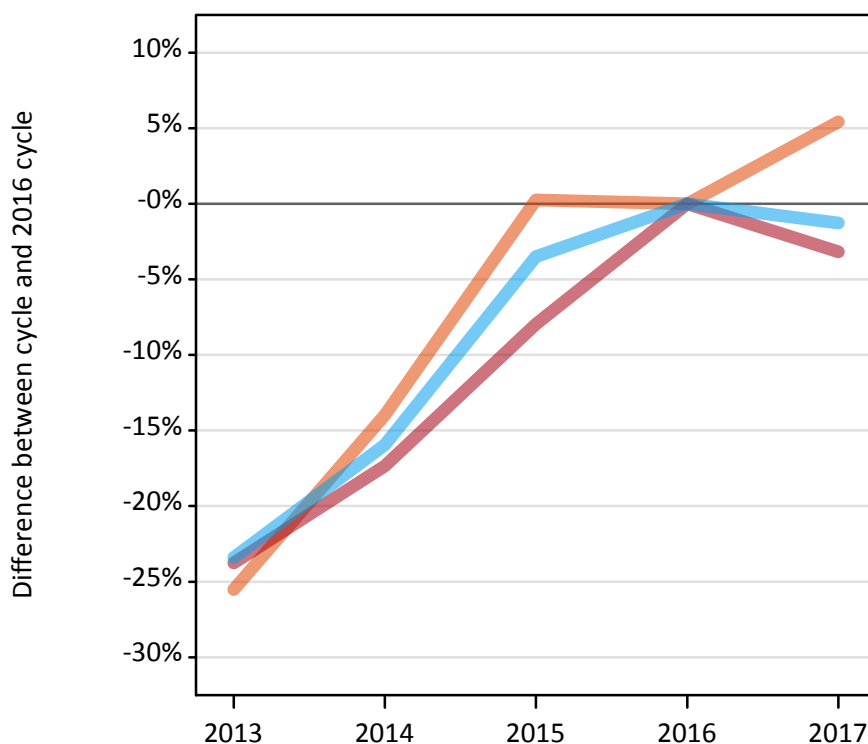
Applicant type	Status	2013	2014	2015	2016	2017
All applicants	Placed	-23%	-17%	-7%	0%	-2%

Note: Percentage changes are not plotted for lines with, on average, fewer than 30 applicants per year. As a result, lines for some, or all, of the states may be missing.

A.6 Placed main scheme applicants from the EU - excluding UK: 12 days after A level results day

Selected placed routes: difference between cycle and 2016 cycle

- Placed (Clearing)
- Placed (Firm)
- Placed (Insurance)



A.7 Placed main scheme applicants from the EU - excluding UK: 12 days after A level results day

All Main scheme placed routes (excluding Adjustment): applicants at 12 days after A level results day

Applicant type	Status	2013	2014	2015	2016	2017
Main scheme	Placed (Clearing)	880	1,020	1,180	1,180	1,240
	Placed (Firm)	18,780	20,370	22,680	24,640	23,850
	Placed (Insurance)	1,620	1,780	2,050	2,120	2,090
	Placed (Other)	1,040	1,020	1,060	1,210	1,170

A.8 Placed main scheme applicants from the EU - excluding UK: 12 days after A level results day

Selected placed routes: difference between cycle and 2016 cycle

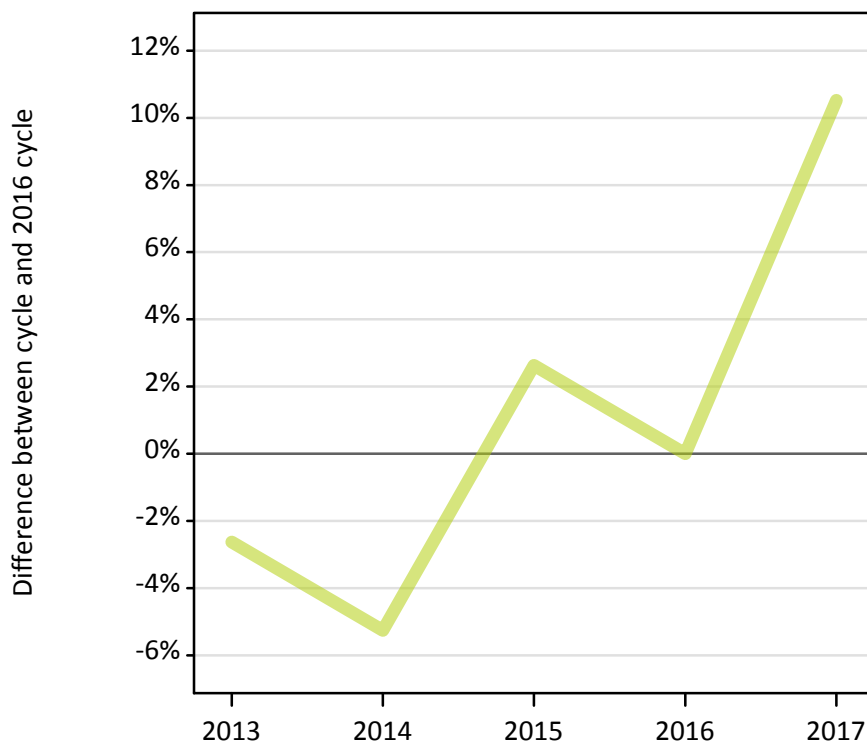
Applicant type	Status	2013	2014	2015	2016	2017
Main scheme	Placed (Clearing)	-26%	-14%	0%	0%	5%
	Placed (Firm)	-24%	-17%	-8%	0%	-3%
	Placed (Insurance)	-23%	-16%	-3%	0%	-1%

Note: Percentage changes are not plotted for lines with, on average, fewer than 30 applicants per year. As a result, lines for some, or all, of the states may be missing.

A.9 Main scheme applicants placed through adjustment: 12 days after A level results day

Placed through adjustment: difference between cycle and 2016 cycle

Placed (Adjustment)



A.10 Main scheme applicants placed through adjustment: 12 days after A level results day

Placed through adjustment: applicants at 12 days after A level results day

Applicant type	Status	2013	2014	2015	2016	2017
Main scheme	Placed (Adjustment)	40	40	40	40	40

A.11 Main scheme applicants placed through adjustment: 12 days after A level results day

Placed through adjustment: difference between cycle and 2016 cycle

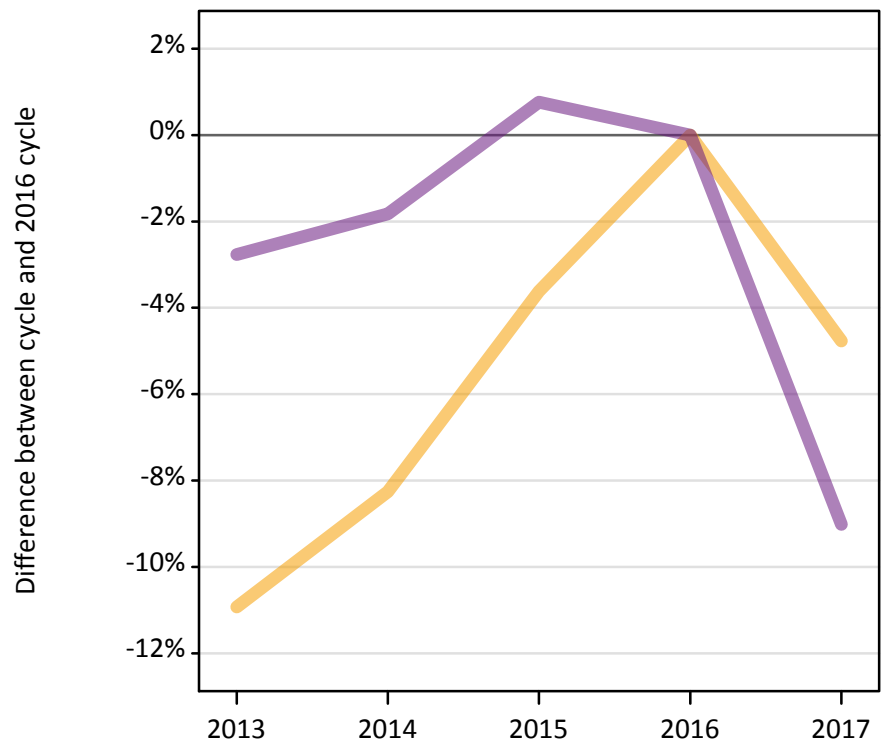
Applicant type	Status	2013	2014	2015	2016	2017
Main scheme	Placed (Adjustment)	-3%	-5%	3%	0%	11%

Note: Percentage changes are not plotted for lines with, on average, fewer than 30 applicants per year. As a result, lines for some, or all, of the states may be missing.

A.12 Main scheme applicants not currently placed from the EU - excluding UK: 12 days after A level results day

Applicants in unplaced states: difference between cycle and 2016 cycle

— Holding offer
— Free to be placed in Clearing



A.13 Main scheme applicants not currently placed from the EU - excluding UK: 12 days after A level results day

Applicants in unplaced states: applicants at 12 days after A level results day

Applicant type	Status	2013	2014	2015	2016	2017
Main scheme	Holding offer	5,510	5,680	5,960	6,190	5,890
	Free to be placed in Clearing	14,190	14,320	14,700	14,590	13,270

A.14 Main scheme applicants not currently placed from the EU - excluding UK: 12 days after A level results day

Applicants in unplaced states: difference between cycle and 2016 cycle

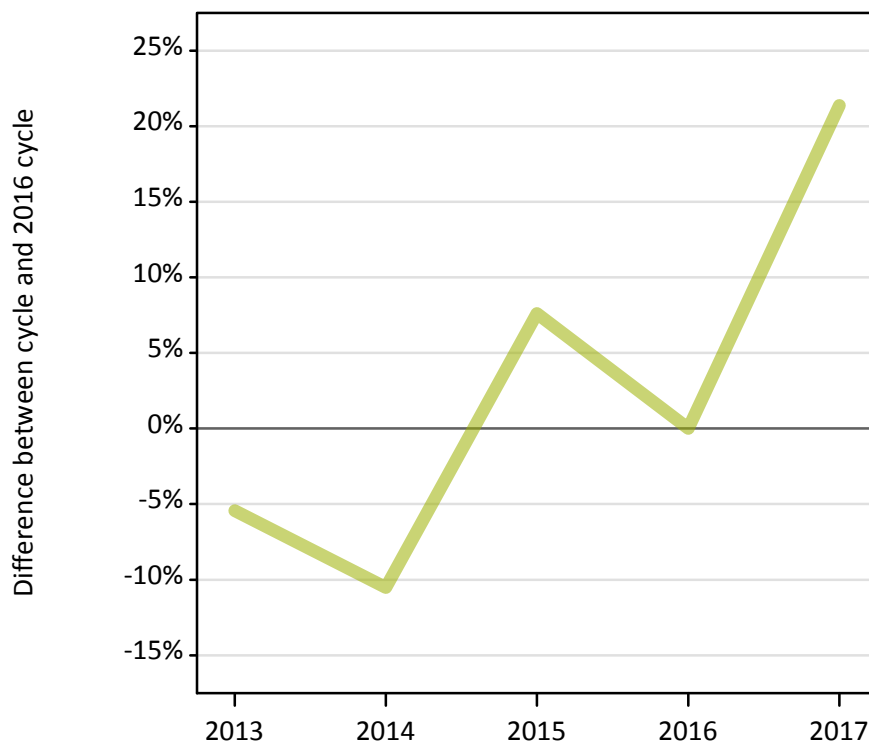
Applicant type	Status	2013	2014	2015	2016	2017
Main scheme	Holding offer	-11%	-8%	-4%	0%	-5%
	Free to be placed in Clearing	-3%	-2%	1%	0%	-9%

Note: Percentage changes are not plotted for lines with, on average, fewer than 30 applicants per year. As a result, lines for some, or all, of the states may be missing.

A.15 Direct to Clearing applicants from the EU - excluding UK: 12 days after A level results day

Placed (Direct to Clearing): difference between cycle and 2016 cycle

Placed (Direct to Clearing)



A.16 Direct to Clearing applicants from the EU - excluding UK: 12 days after A level results day

Direct to Clearing 12 days after A level results day

Applicant type	Status	2013	2014	2015	2016	2017
Direct to Clearing	Placed (Direct to Clearing)	260	250	300	280	340
	Other (Direct to Clearing)	380	370	380	330	340

A.17 Direct to Clearing applicants from the EU - excluding UK: 12 days after A level results day

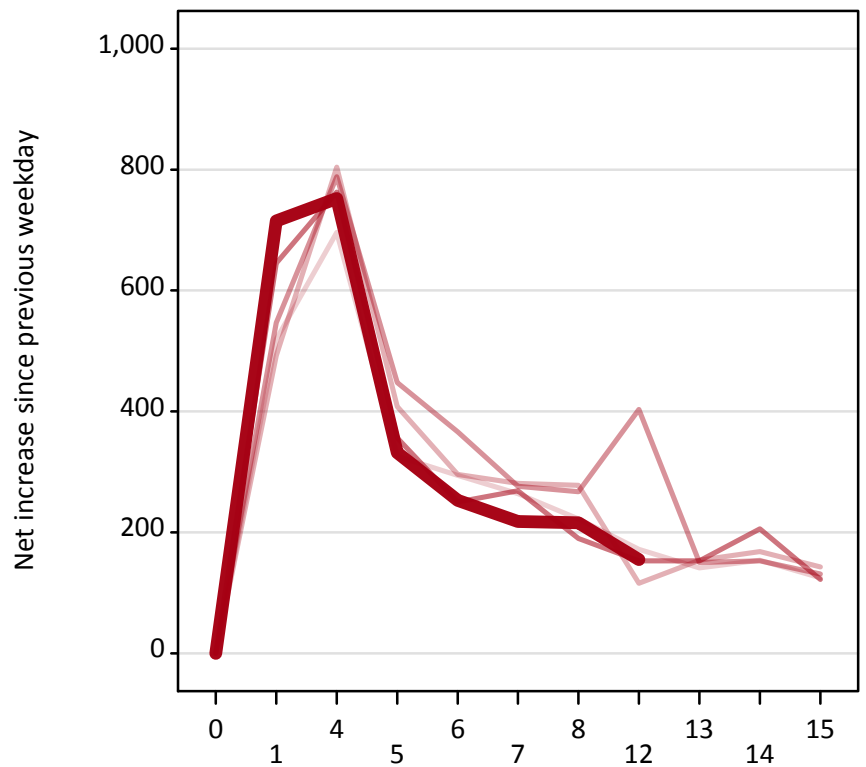
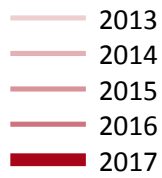
Placed (Direct to Clearing): difference between cycle and 2016 cycle

Applicant type	Status	2013	2014	2015	2016	2017
Direct to Clearing	Placed (Direct to Clearing)	-5%	-11%	8%	0%	21%

Note: Percentage changes are not plotted for lines with, on average, fewer than 30 applicants per year. As a result, lines for some, or all, of the states may be missing.

A.18 All Placed: Daily net change (from the EU - excluding UK)

Net increase since previous weekday (2017 cycle up to 12 days after A level results day)



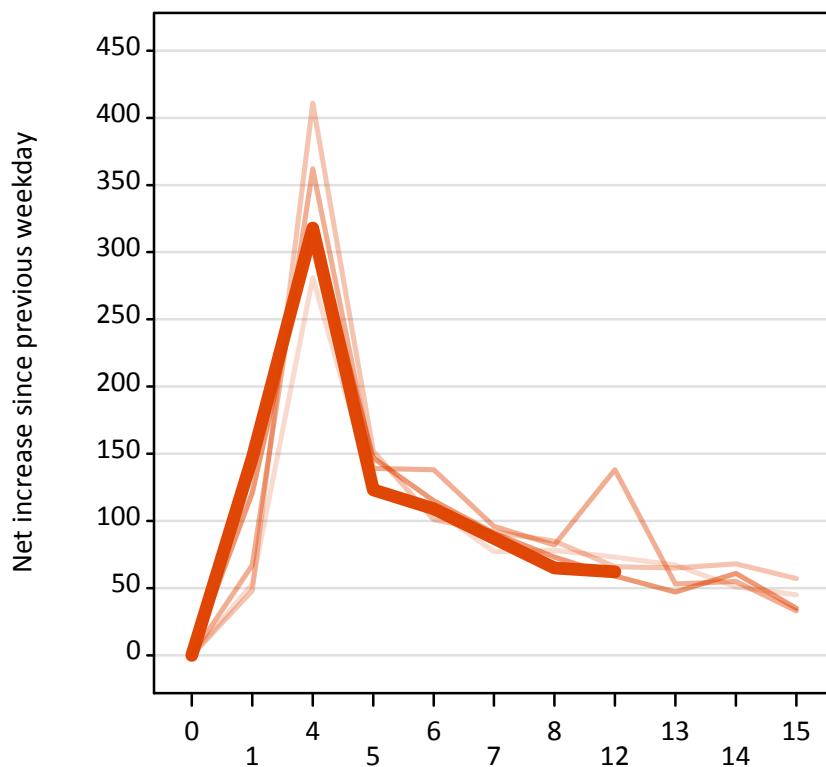
A.19 All Placed: Daily net change (from the EU - excluding UK)

Net increase since previous weekday (2017 cycle up to 12 days after A level results day)

Applicant status, days since A level results day		2013	2014	2015	2016	2017
All Placed	0	0	0	0	0	0
	1	520	490	550	650	720
	4	700	800	790	760	750
	5	330	410	450	360	330
	6	290	300	370	250	250
	7	260	280	280	270	220
	8	220	280	270	190	220
	12	170	120	400	150	160
	13	140	150	150	150	
	14	150	170	150	210	
	15	130	140	130	120	

A.20 Placed through Clearing only: Daily net change (from the EU - excluding UK)

Net increase since previous weekday (2017 cycle up to 12 days after A level results day)



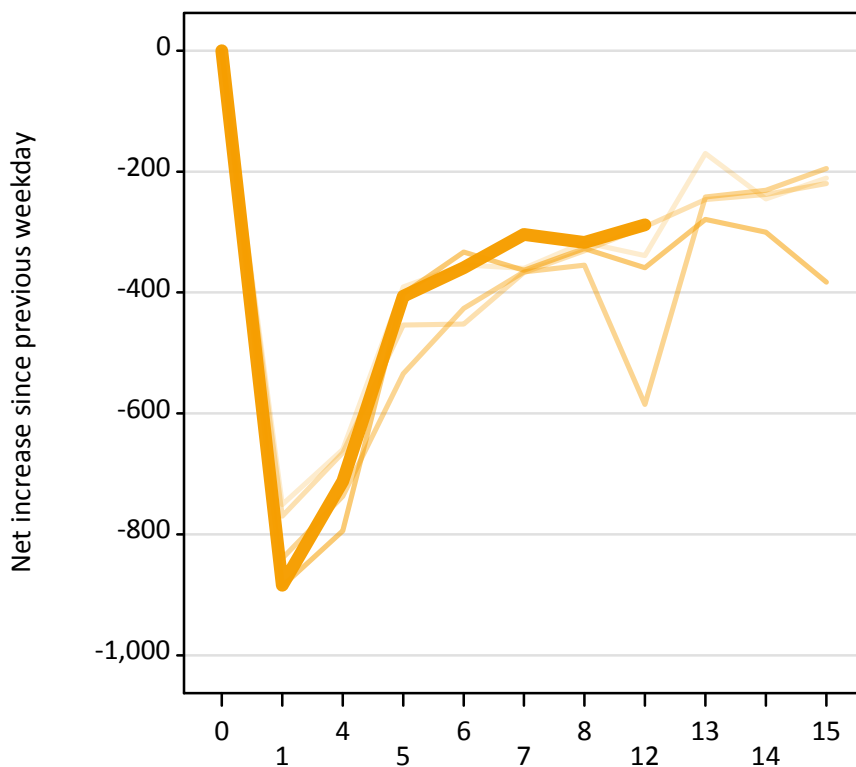
A.21 Placed through Clearing only: Daily net change (from the EU - excluding UK)

Net increase since previous weekday (2017 cycle up to 12 days after A level results day)

Applicant status, days since A level results day		2013	2014	2015	2016	2017
Placed through Clearing only	0	0	0	0	0	0
	1	50	50	70	120	150
	4	280	410	360	320	320
	5	120	150	140	150	120
	6	110	100	140	120	110
	7	80	90	100	90	90
	8	80	90	80	70	70
	12	70	70	140	60	60
	13	70	70	50	50	
	14	50	70	60	60	
	15	50	60	30	40	

A.22 Holding Offer: Daily net change (from the EU - excluding UK)

Net increase since previous weekday (2017 cycle up to 12 days after A level results day)



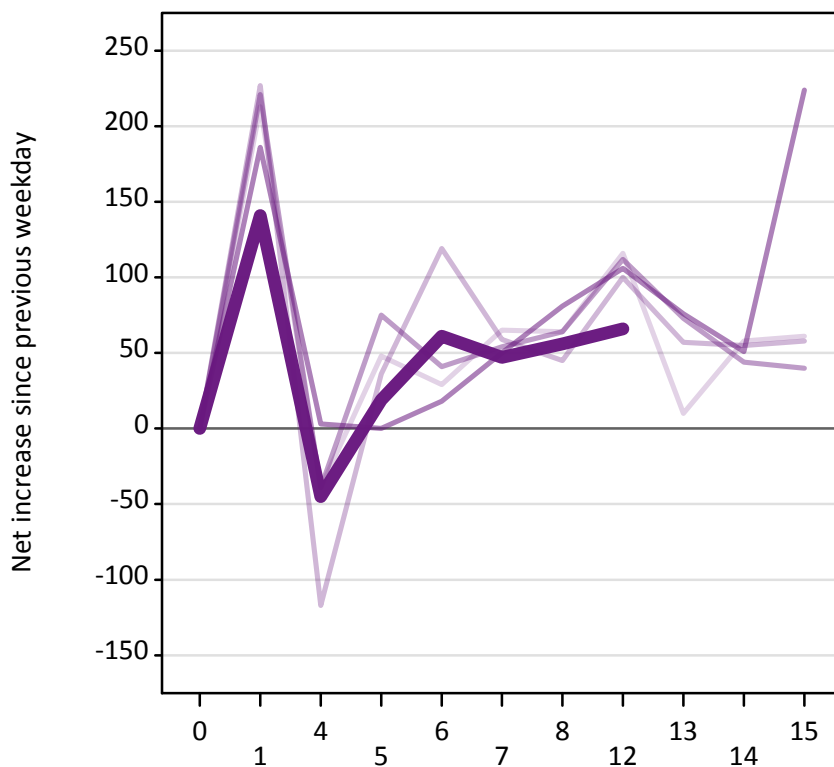
A.23 Holding Offer: Daily net change (from the EU - excluding UK)

Net increase since previous weekday (2017 cycle up to 12 days after A level results day)

Applicant status, days since A level results day		2013	2014	2015	2016	2017
Holding Offer	0	0	0	0	0	0
	1	-750	-770	-840	-890	-880
	4	-660	-670	-740	-790	-710
	5	-390	-450	-530	-400	-410
	6	-350	-450	-430	-330	-360
	7	-360	-370	-370	-360	-300
	8	-320	-330	-360	-330	-320
	12	-340	-290	-590	-360	-290
	13	-170	-250	-240	-280	
	14	-250	-240	-230	-300	
	15	-210	-220	-200	-380	

A.24 Free to be placed in Clearing: Daily net change (from the EU - excluding UK)

Net increase since previous weekday (2017 cycle up to 12 days after A level results day)



A.25 Free to be placed in Clearing: Daily net change (from the EU - excluding UK)

Net increase since previous weekday (2017 cycle up to 12 days after A level results day)

Applicant status, days since A level results day		2013	2014	2015	2016	2017
Free to be placed in Clearing	0	0	0	0	0	0
	1	210	230	220	190	140
	4	-40	-120	-40	0	-50
	5	50	40	80	0	20
	6	30	120	40	20	60
	7	70	60	50	50	50
	8	60	50	60	80	60
	12	120	100	110	110	70
	13	10	60	70	80	
	14	60	60	40	50	
	15	60	60	40	220	