

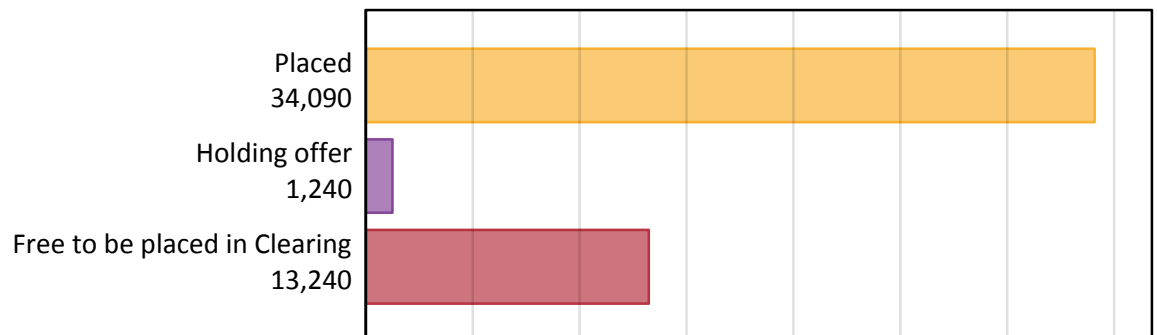
Daily Clearing Analysis: Overview

Analysis at 00:05 on Wednesday 30 August 2017 (13 days after A level results day)

A.1 Applicants by type and status from Scotland, 2017 cycle

Applicant type	Status	2017
Main scheme	Placed (Clearing)	1,220
	Placed (Adjustment)	0
	Placed (Firm)	30,340
	Placed (Insurance)	1,500
	Placed (Other)	700
	Holding offer	1,240
	Free to be placed in Clearing	13,240
Direct to Clearing	Placed (Direct to Clearing)	320
	Other (Direct to Clearing)	330
All applicants	Placed	34,090

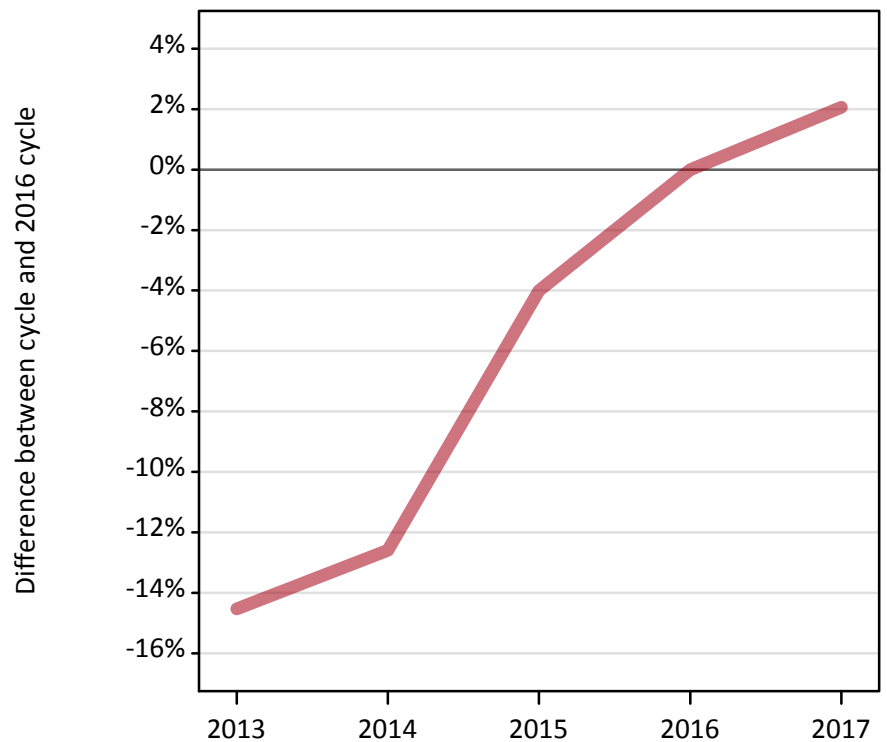
A.2 Summary of applicants who are placed, holding offers or free to be placed in Clearing (Scotland)



A.3 All placed applicants from Scotland: 13 days after A level results day

All placed applicants: difference between cycle and 2016 cycle

Placed



A.4 All placed applicants from Scotland: 13 days after A level results day

All placed applicants: applicants at 13 days after A level results day

Applicant type	Status	2013	2014	2015	2016	2017
All applicants	Placed	28,550	29,190	32,060	33,400	34,090

A.5 All placed applicants from Scotland: 13 days after A level results day

All placed applicants: difference between cycle and 2016 cycle

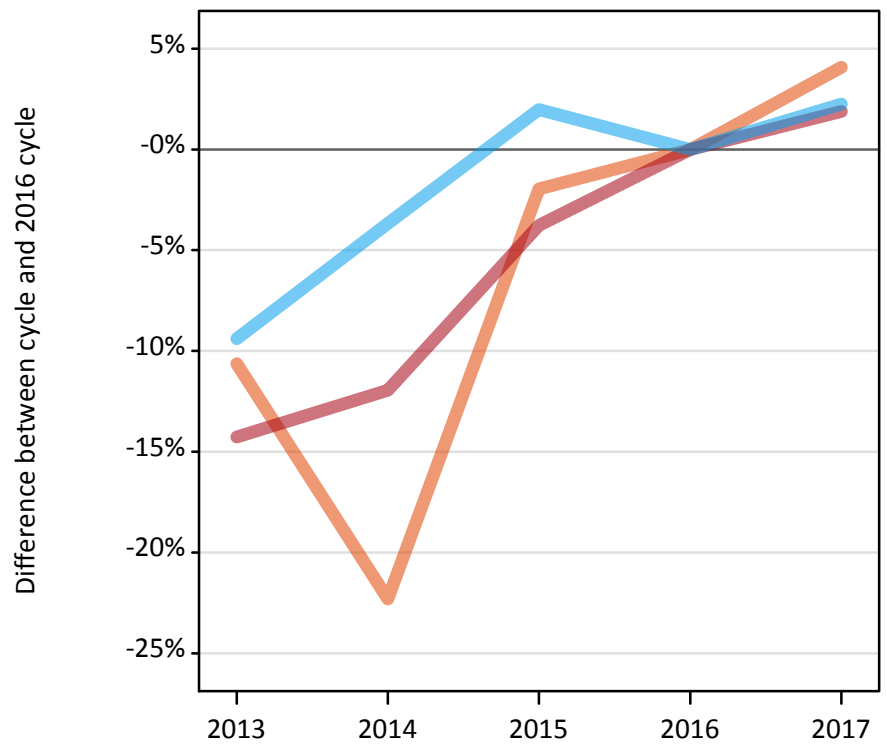
Applicant type	Status	2013	2014	2015	2016	2017
All applicants	Placed	-15%	-13%	-4%	0%	2%

Note: Percentage changes are not plotted for lines with, on average, fewer than 30 applicants per year. As a result, lines for some, or all, of the states may be missing.

A.6 Placed main scheme applicants from Scotland: 13 days after A level results day

Selected placed routes: difference between cycle and 2016 cycle

- Placed (Clearing)
- Placed (Firm)
- Placed (Insurance)



A.7 Placed main scheme applicants from Scotland: 13 days after A level results day

All Main scheme placed routes (excluding Adjustment): applicants at 13 days after A level results day

Applicant type	Status	2013	2014	2015	2016	2017
Main scheme	Placed (Clearing)	1,050	910	1,150	1,180	1,220
	Placed (Firm)	25,530	26,220	28,660	29,780	30,340
	Placed (Insurance)	1,330	1,420	1,500	1,470	1,500
	Placed (Other)	480	510	550	680	700

A.8 Placed main scheme applicants from Scotland: 13 days after A level results day

Selected placed routes: difference between cycle and 2016 cycle

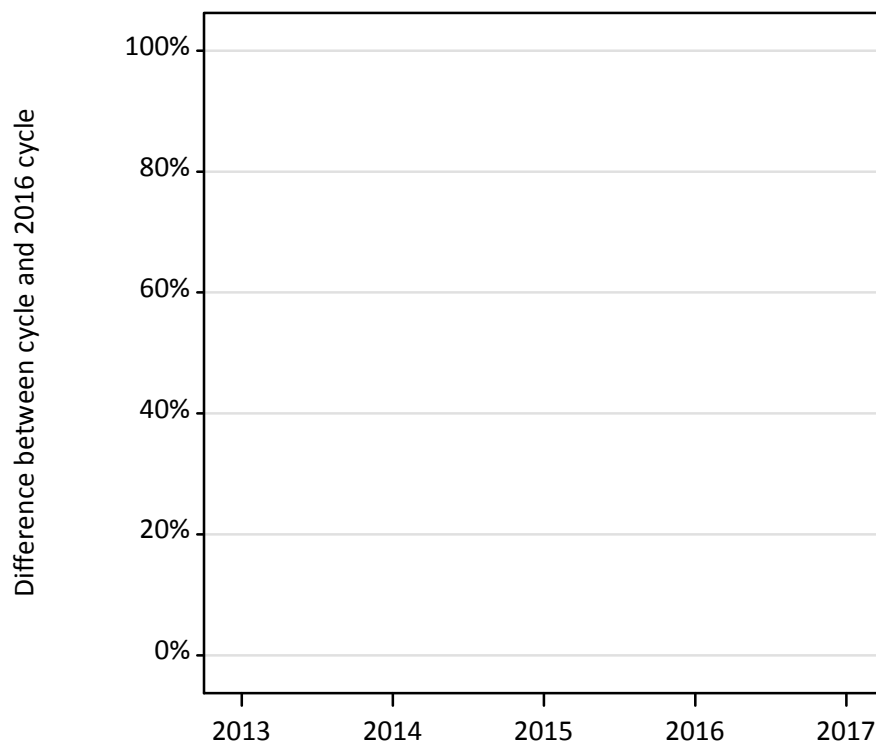
Applicant type	Status	2013	2014	2015	2016	2017
Main scheme	Placed (Clearing)	-11%	-22%	-2%	0%	4%
	Placed (Firm)	-14%	-12%	-4%	0%	2%
	Placed (Insurance)	-9%	-4%	2%	0%	2%

Note: Percentage changes are not plotted for lines with, on average, fewer than 30 applicants per year. As a result, lines for some, or all, of the states may be missing.

A.9 Main scheme applicants placed through adjustment: 13 days after A level results day

Placed through adjustment: difference between cycle and 2016 cycle

Placed (Adjustment)



A.10 Main scheme applicants placed through adjustment: 13 days after A level results day

Placed through adjustment: applicants at 13 days after A level results day

Applicant type	Status	2013	2014	2015	2016	2017
Main scheme	Placed (Adjustment)	10	10	10	10	0

A.11 Main scheme applicants placed through adjustment: 13 days after A level results day

Placed through adjustment: difference between cycle and 2016 cycle

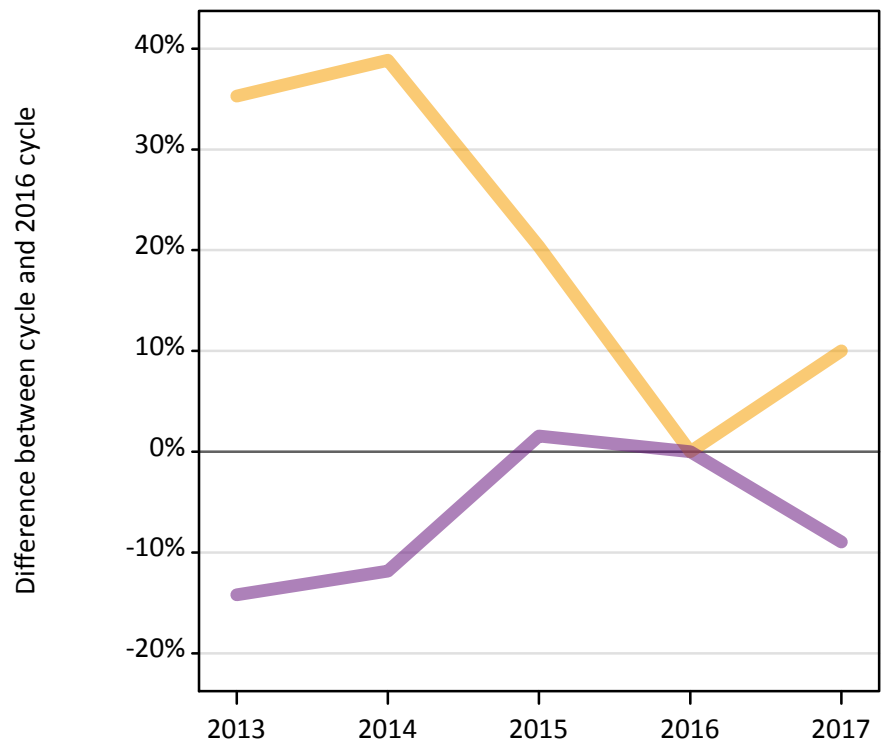
Applicant type	Status	2013	2014	2015	2016	2017
Main scheme	Placed (Adjustment)	22%	22%	-44%	0%	-78%

Note: Percentage changes are not plotted for lines with, on average, fewer than 30 applicants per year. As a result, lines for some, or all, of the states may be missing.

A.12 Main scheme applicants not currently placed from Scotland: 13 days after A level results day

Applicants in unplaced states: difference between cycle and 2016 cycle

— Holding offer
— Free to be placed in Clearing



A.13 Main scheme applicants not currently placed from Scotland: 13 days after A level results day

Applicants in unplaced states: applicants at 13 days after A level results day

Applicant type	Status	2013	2014	2015	2016	2017
Main scheme	Holding offer	1,530	1,570	1,360	1,130	1,240
	Free to be placed in Clearing	12,470	12,820	14,760	14,540	13,240

A.14 Main scheme applicants not currently placed from Scotland: 13 days after A level results day

Applicants in unplaced states: difference between cycle and 2016 cycle

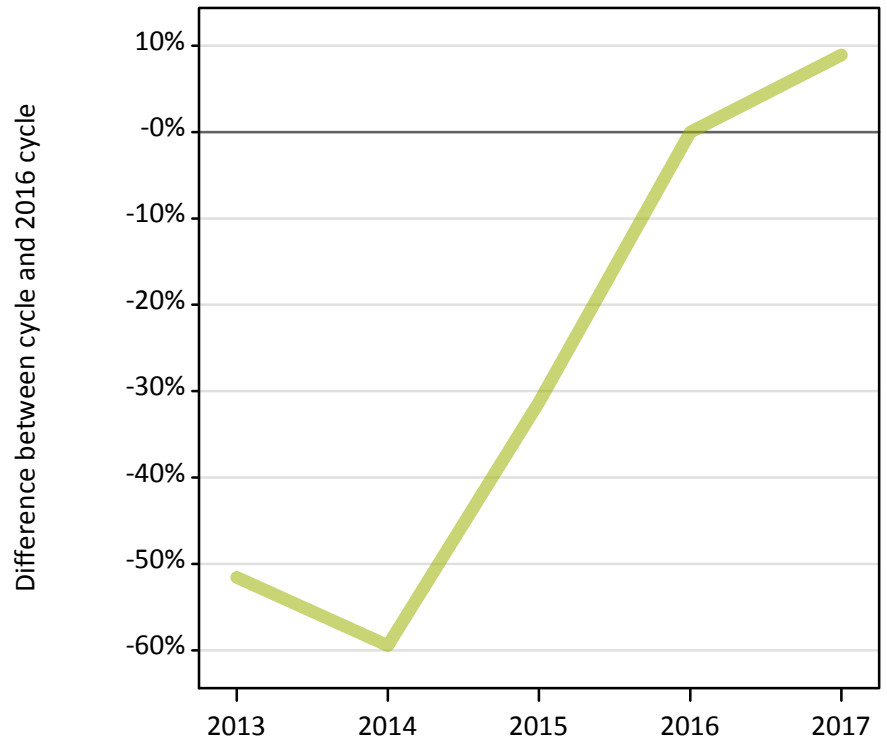
Applicant type	Status	2013	2014	2015	2016	2017
Main scheme	Holding offer	35%	39%	20%	0%	10%
	Free to be placed in Clearing	-14%	-12%	2%	0%	-9%

Note: Percentage changes are not plotted for lines with, on average, fewer than 30 applicants per year. As a result, lines for some, or all, of the states may be missing.

A.15 Direct to Clearing applicants from Scotland: 13 days after A level results day

Placed (Direct to Clearing): difference between cycle and 2016 cycle

Placed (Direct to Clearing)



A.16 Direct to Clearing applicants from Scotland: 13 days after A level results day

Direct to Clearing 13 days after A level results day

Applicant type	Status	2013	2014	2015	2016	2017
Direct to Clearing	Placed (Direct to Clearing)	140	120	200	290	320
	Other (Direct to Clearing)	280	260	360	360	330

A.17 Direct to Clearing applicants from Scotland: 13 days after A level results day

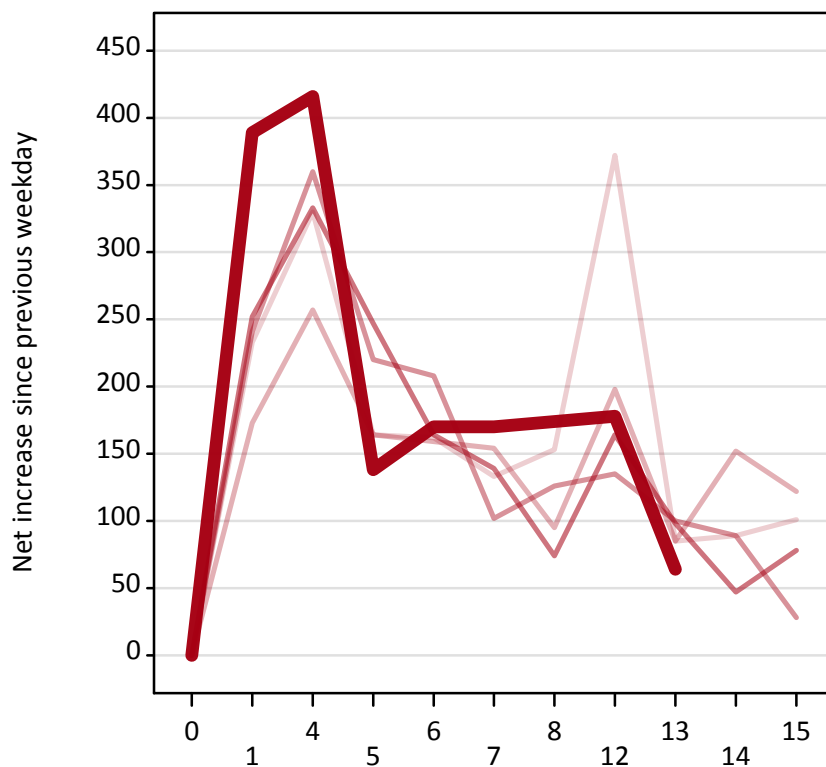
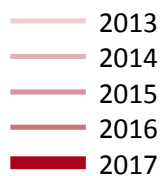
Placed (Direct to Clearing): difference between cycle and 2016 cycle

Applicant type	Status	2013	2014	2015	2016	2017
Direct to Clearing	Placed (Direct to Clearing)	-52%	-59%	-31%	0%	9%

Note: Percentage changes are not plotted for lines with, on average, fewer than 30 applicants per year. As a result, lines for some, or all, of the states may be missing.

A.18 All Placed: Daily net change (from Scotland)

Net increase since previous weekday (2017 cycle up to 13 days after A level results day)



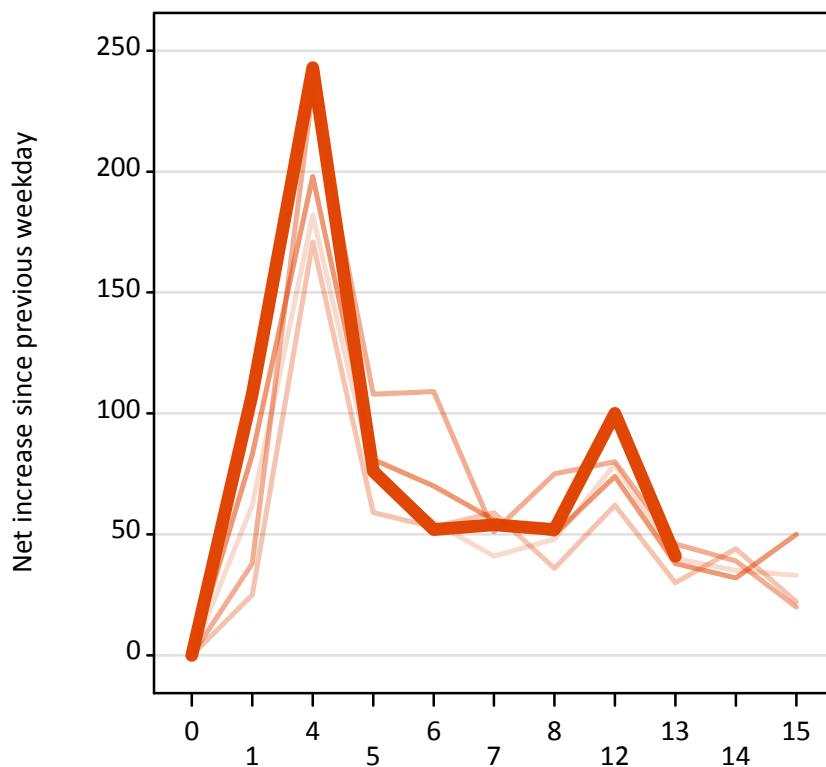
A.19 All Placed: Daily net change (from Scotland)

Net increase since previous weekday (2017 cycle up to 13 days after A level results day)

Applicant status, days since A level results day		2013	2014	2015	2016	2017
All Placed	0	0	0	0	0	0
	1	230	170	240	250	390
	4	330	260	360	330	420
	5	160	160	220	250	140
	6	160	160	210	160	170
	7	130	150	100	140	170
	8	150	100	130	70	170
	12	370	200	140	160	180
	13	90	90	100	100	60
	14	90	150	90	50	
	15	100	120	30	80	

A.20 Placed through Clearing only: Daily net change (from Scotland)

Net increase since previous weekday (2017 cycle up to 13 days after A level results day)



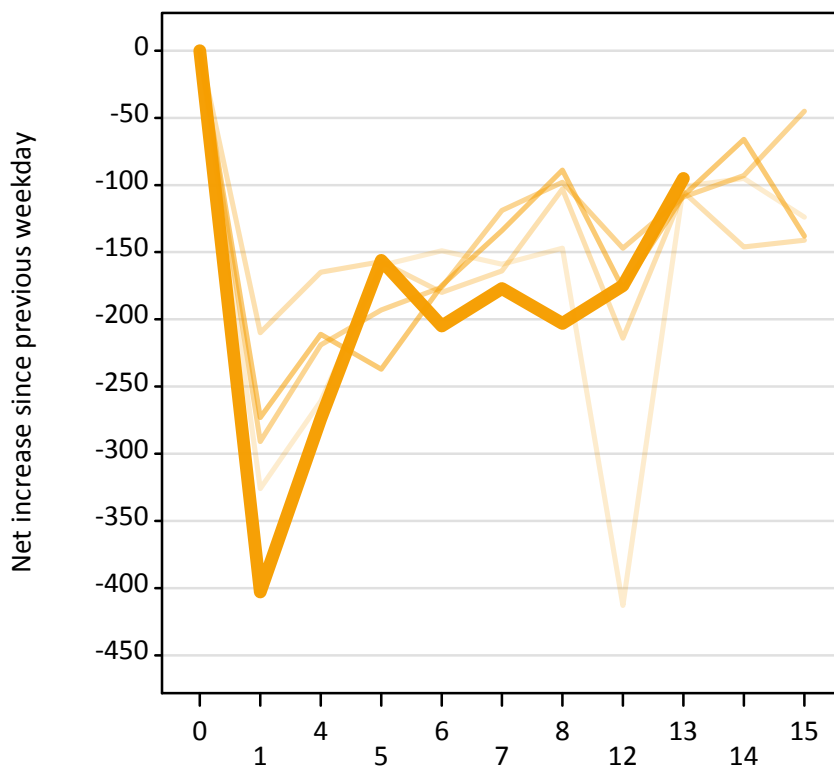
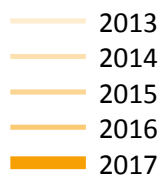
A.21 Placed through Clearing only: Daily net change (from Scotland)

Net increase since previous weekday (2017 cycle up to 13 days after A level results day)

Applicant status, days since A level results day		2013	2014	2015	2016	2017
Placed through Clearing only	0	0	0	0	0	0
	1	60	30	40	80	110
	4	180	170	230	200	240
	5	70	60	110	80	80
	6	60	50	110	70	50
	7	40	60	50	60	50
	8	50	40	80	50	50
	12	80	60	80	70	100
	13	40	30	50	40	40
	14	40	40	40	30	
	15	30	20	20	50	

A.22 Holding Offer: Daily net change (from Scotland)

Net increase since previous weekday (2017 cycle up to 13 days after A level results day)



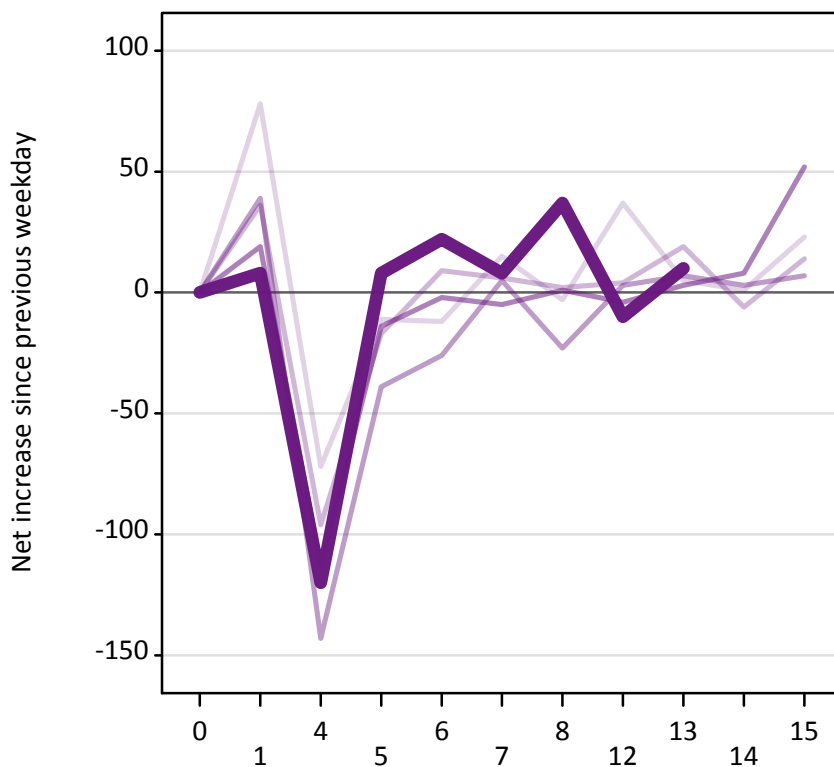
A.23 Holding Offer: Daily net change (from Scotland)

Net increase since previous weekday (2017 cycle up to 13 days after A level results day)

Applicant status, days since A level results day		2013	2014	2015	2016	2017
Holding Offer	0	0	0	0	0	0
	1	-330	-210	-290	-270	-400
	4	-260	-170	-220	-210	-270
	5	-160	-160	-190	-240	-160
	6	-150	-180	-180	-180	-210
	7	-160	-160	-120	-130	-180
	8	-150	-100	-100	-90	-200
	12	-410	-210	-150	-180	-180
	13	-100	-110	-110	-110	-100
	14	-100	-150	-90	-70	
	15	-120	-140	-50	-140	

A.24 Free to be placed in Clearing: Daily net change (from Scotland)

Net increase since previous weekday (2017 cycle up to 13 days after A level results day)



A.25 Free to be placed in Clearing: Daily net change (from Scotland)

Net increase since previous weekday (2017 cycle up to 13 days after A level results day)

Applicant status, days since A level results day		2013	2014	2015	2016	2017
Free to be placed in Clearing	0	0	0	0	0	0
	1	80	40	40	20	10
	4	-70	-100	-140	-110	-120
	5	-10	-20	-40	-10	10
	6	-10	10	-30	0	20
	7	20	10	10	-10	10
	8	0	0	-20	0	40
	12	40	0	0	0	-10
	13	10	20	10	0	10
	14	0	-10	0	10	
	15	20	10	10	50	