

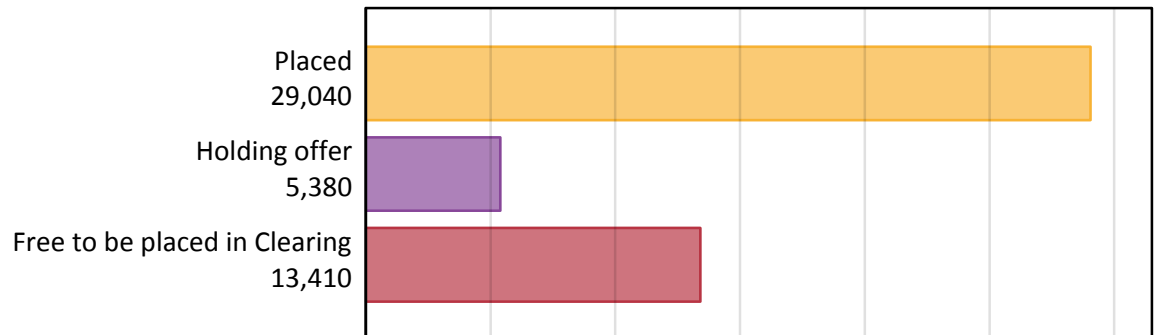
Daily Clearing Analysis: Overview

Analysis at 00:05 on Thursday 31 August 2017 (14 days after A level results day)

A.1 Applicants by type and status from the EU - excluding UK, 2017 cycle

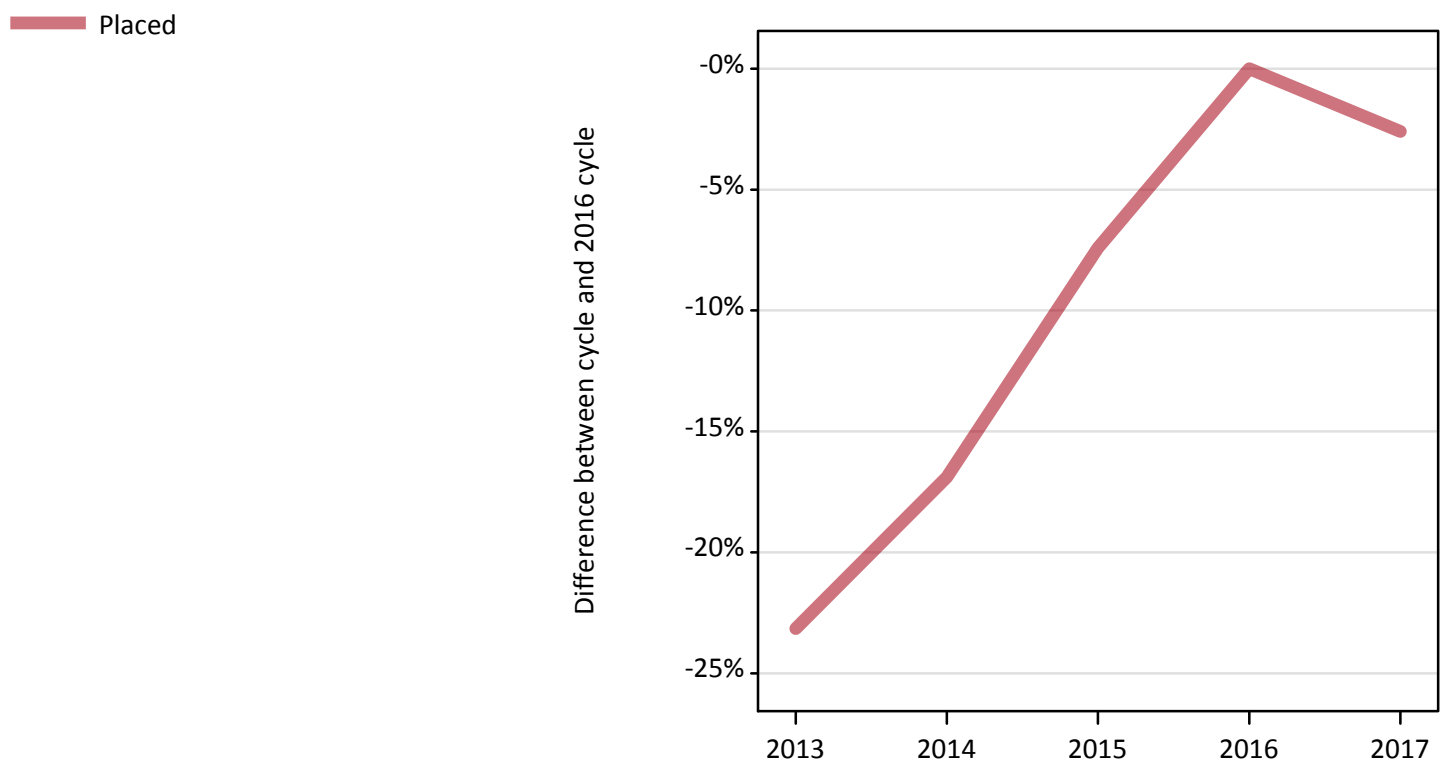
Applicant type	Status	2017
Main scheme	Placed (Clearing)	1,320
	Placed (Adjustment)	40
	Placed (Firm)	24,000
	Placed (Insurance)	2,120
	Placed (Other)	1,200
	Holding offer	5,380
	Free to be placed in Clearing	13,410
Direct to Clearing	Placed (Direct to Clearing)	370
	Other (Direct to Clearing)	330
All applicants	Placed	29,040

A.2 Summary of applicants who are placed, holding offers or free to be placed in Clearing (the EU - excluding UK)



A.3 All placed applicants from the EU - excluding UK: 14 days after A level results day

All placed applicants: difference between cycle and 2016 cycle



A.4 All placed applicants from the EU - excluding UK: 14 days after A level results day

All placed applicants: applicants at 14 days after A level results day

Applicant type	Status	2013	2014	2015	2016	2017
All applicants	Placed	22,920	24,780	27,610	29,820	29,040

A.5 All placed applicants from the EU - excluding UK: 14 days after A level results day

All placed applicants: difference between cycle and 2016 cycle

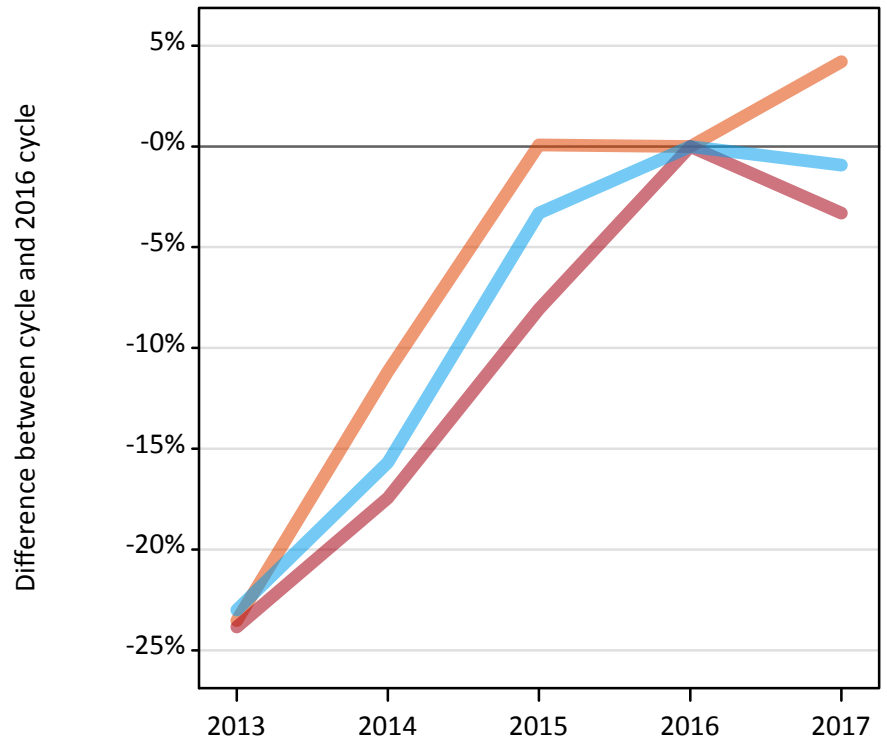
Applicant type	Status	2013	2014	2015	2016	2017
All applicants	Placed	-23%	-17%	-7%	0%	-3%

Note: Percentage changes are not plotted for lines with, on average, fewer than 30 applicants per year. As a result, lines for some, or all, of the states may be missing.

A.6 Placed main scheme applicants from the EU - excluding UK: 14 days after A level results day

Selected placed routes: difference between cycle and 2016 cycle

- Placed (Clearing)
- Placed (Firm)
- Placed (Insurance)



A.7 Placed main scheme applicants from the EU - excluding UK: 14 days after A level results day

All Main scheme placed routes (excluding Adjustment): applicants at 14 days after A level results day

Applicant type	Status	2013	2014	2015	2016	2017
Main scheme	Placed (Clearing)	970	1,120	1,260	1,260	1,320
	Placed (Firm)	18,900	20,490	22,820	24,820	24,000
	Placed (Insurance)	1,650	1,810	2,070	2,140	2,120
	Placed (Other)	1,070	1,050	1,090	1,250	1,200

A.8 Placed main scheme applicants from the EU - excluding UK: 14 days after A level results day

Selected placed routes: difference between cycle and 2016 cycle

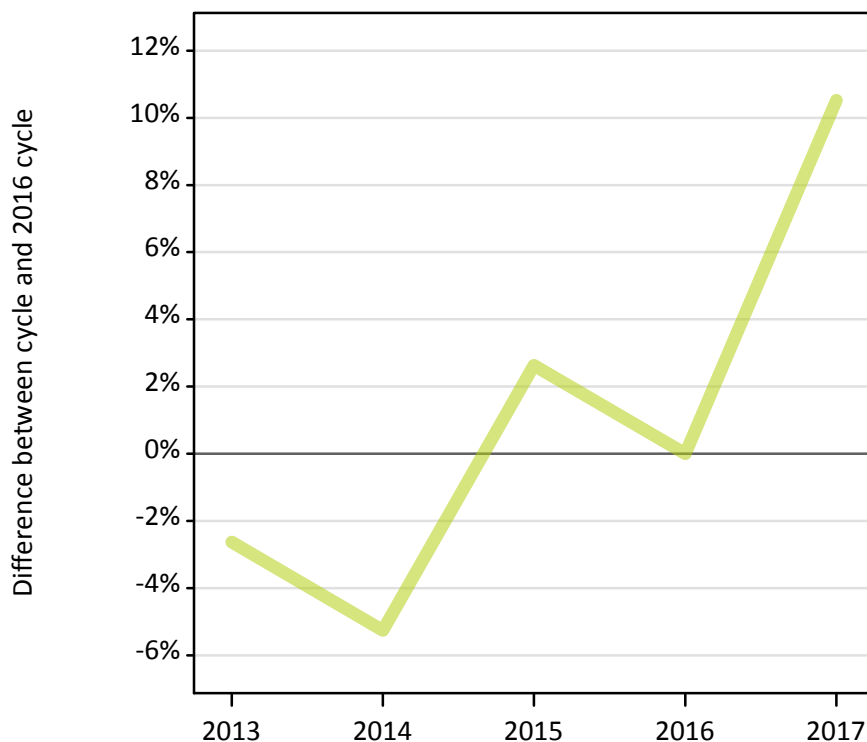
Applicant type	Status	2013	2014	2015	2016	2017
Main scheme	Placed (Clearing)	-24%	-11%	0%	0%	4%
	Placed (Firm)	-24%	-17%	-8%	0%	-3%
	Placed (Insurance)	-23%	-16%	-3%	0%	-1%

Note: Percentage changes are not plotted for lines with, on average, fewer than 30 applicants per year. As a result, lines for some, or all, of the states may be missing.

A.9 Main scheme applicants placed through adjustment: 14 days after A level results day

Placed through adjustment: difference between cycle and 2016 cycle

Placed (Adjustment)



A.10 Main scheme applicants placed through adjustment: 14 days after A level results day

Placed through adjustment: applicants at 14 days after A level results day

Applicant type	Status	2013	2014	2015	2016	2017
Main scheme	Placed (Adjustment)	40	40	40	40	40

A.11 Main scheme applicants placed through adjustment: 14 days after A level results day

Placed through adjustment: difference between cycle and 2016 cycle

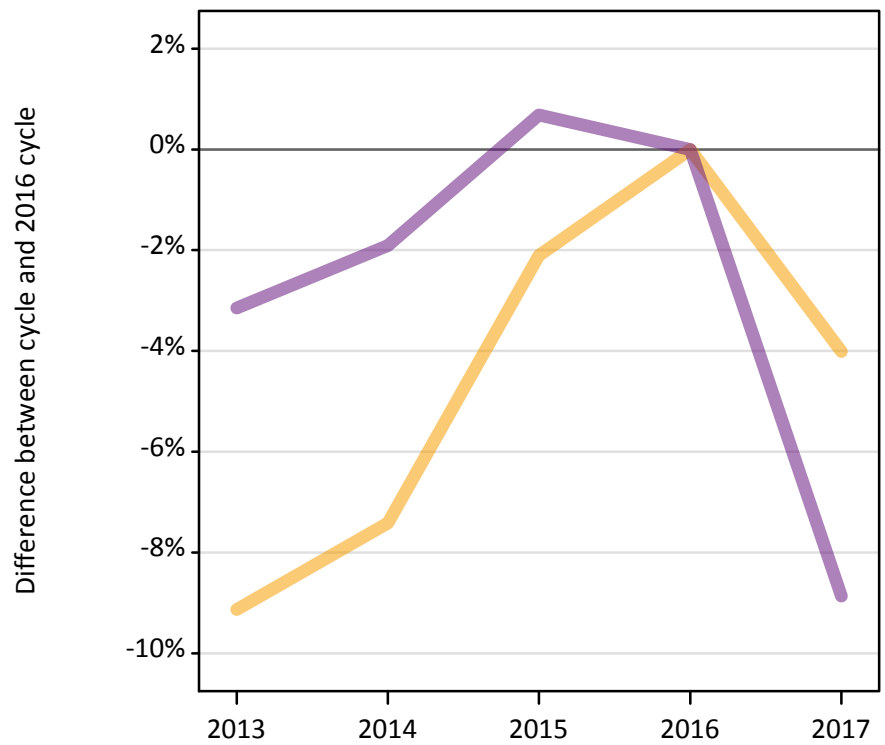
Applicant type	Status	2013	2014	2015	2016	2017
Main scheme	Placed (Adjustment)	-3%	-5%	3%	0%	11%

Note: Percentage changes are not plotted for lines with, on average, fewer than 30 applicants per year. As a result, lines for some, or all, of the states may be missing.

A.12 Main scheme applicants not currently placed from the EU - excluding UK: 14 days after A level results day

Applicants in unplaced states: difference between cycle and 2016 cycle

— Holding offer
— Free to be placed in Clearing



A.13 Main scheme applicants not currently placed from the EU - excluding UK: 14 days after A level results day

Applicants in unplaced states: applicants at 14 days after A level results day

Applicant type	Status	2013	2014	2015	2016	2017
Main scheme	Holding offer	5,100	5,190	5,490	5,610	5,380
	Free to be placed in Clearing	14,250	14,440	14,820	14,720	13,410

A.14 Main scheme applicants not currently placed from the EU - excluding UK: 14 days after A level results day

Applicants in unplaced states: difference between cycle and 2016 cycle

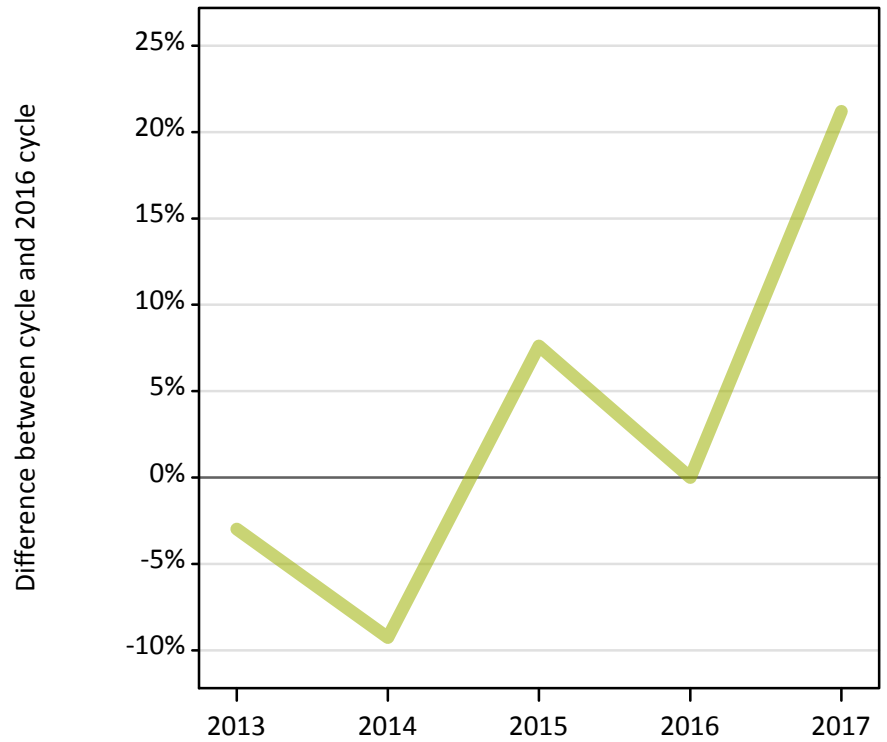
Applicant type	Status	2013	2014	2015	2016	2017
Main scheme	Holding offer	-9%	-7%	-2%	0%	-4%
	Free to be placed in Clearing	-3%	-2%	1%	0%	-9%

Note: Percentage changes are not plotted for lines with, on average, fewer than 30 applicants per year. As a result, lines for some, or all, of the states may be missing.

A.15 Direct to Clearing applicants from the EU - excluding UK: 14 days after A level results day

Placed (Direct to Clearing): difference between cycle and 2016 cycle

Placed (Direct to Clearing)



A.16 Direct to Clearing applicants from the EU - excluding UK: 14 days after A level results day

Direct to Clearing 14 days after A level results day

Applicant type	Status	2013	2014	2015	2016	2017
Direct to Clearing	Placed (Direct to Clearing)	290	270	330	300	370
	Other (Direct to Clearing)	360	370	380	330	330

A.17 Direct to Clearing applicants from the EU - excluding UK: 14 days after A level results day

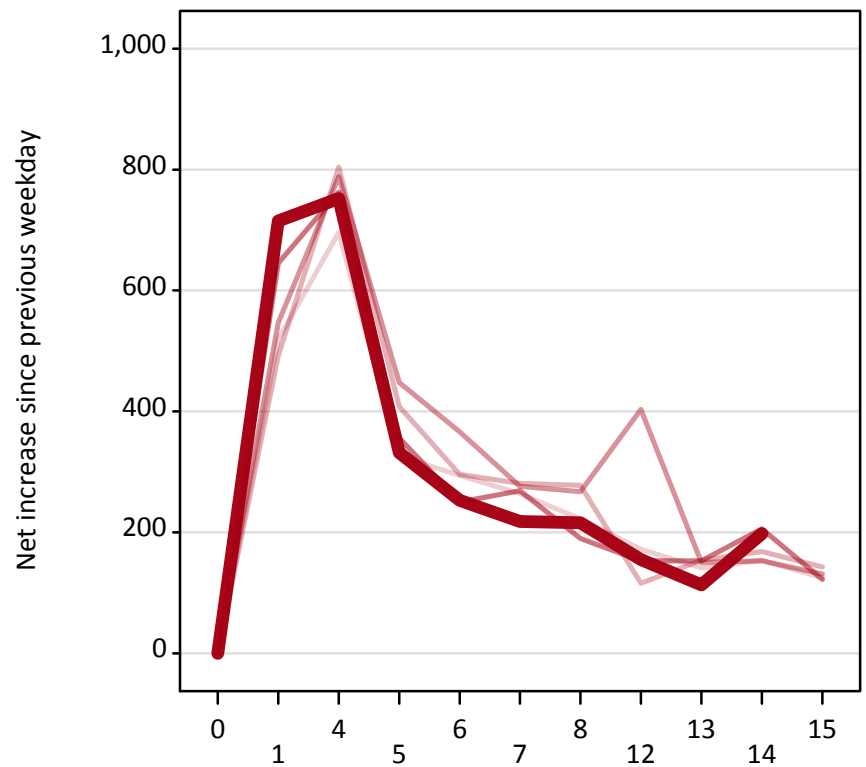
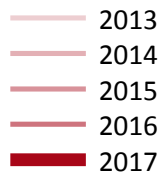
Placed (Direct to Clearing): difference between cycle and 2016 cycle

Applicant type	Status	2013	2014	2015	2016	2017
Direct to Clearing	Placed (Direct to Clearing)	-3%	-9%	8%	0%	21%

Note: Percentage changes are not plotted for lines with, on average, fewer than 30 applicants per year. As a result, lines for some, or all, of the states may be missing.

A.18 All Placed: Daily net change (from the EU - excluding UK)

Net increase since previous weekday (2017 cycle up to 14 days after A level results day)



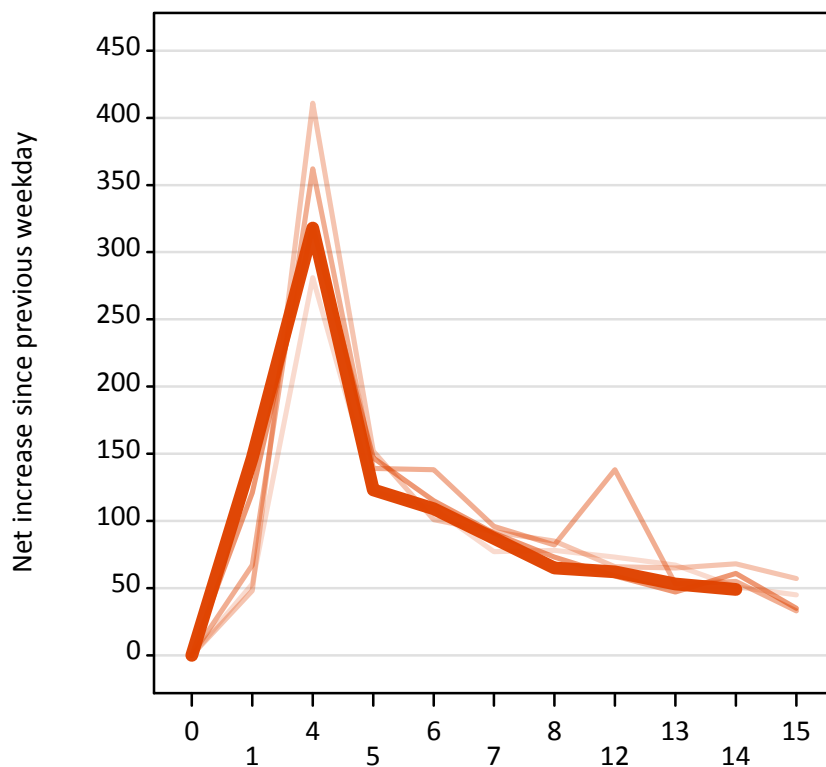
A.19 All Placed: Daily net change (from the EU - excluding UK)

Net increase since previous weekday (2017 cycle up to 14 days after A level results day)

Applicant status, days since A level results day		2013	2014	2015	2016	2017
All Placed	0	0	0	0	0	0
	1	520	490	550	650	720
	4	700	800	790	760	750
	5	330	410	450	360	330
	6	290	300	370	250	250
	7	260	280	280	270	220
	8	220	280	270	190	220
	12	170	120	400	150	160
	13	140	150	150	150	110
	14	150	170	150	210	200
	15	130	140	130	120	

A.20 Placed through Clearing only: Daily net change (from the EU - excluding UK)

Net increase since previous weekday (2017 cycle up to 14 days after A level results day)



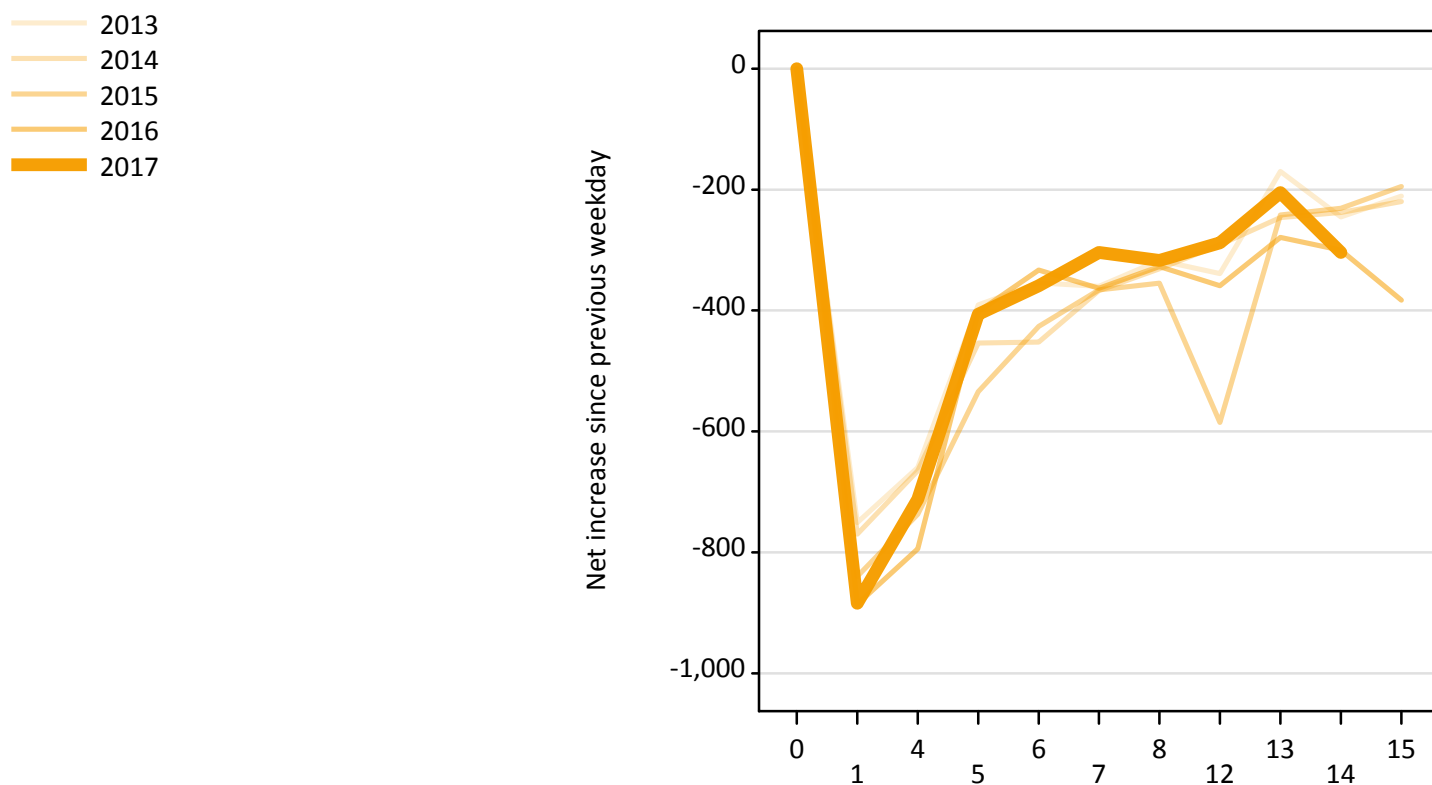
A.21 Placed through Clearing only: Daily net change (from the EU - excluding UK)

Net increase since previous weekday (2017 cycle up to 14 days after A level results day)

Applicant status, days since A level results day		2013	2014	2015	2016	2017
Placed through Clearing only	0	0	0	0	0	0
	1	50	50	70	120	150
	4	280	410	360	320	320
	5	120	150	140	150	120
	6	110	100	140	120	110
	7	80	90	100	90	90
	8	80	90	80	70	70
	12	70	70	140	60	60
	13	70	70	50	50	50
	14	50	70	60	60	50
	15	50	60	30	40	

A.22 Holding Offer: Daily net change (from the EU - excluding UK)

Net increase since previous weekday (2017 cycle up to 14 days after A level results day)



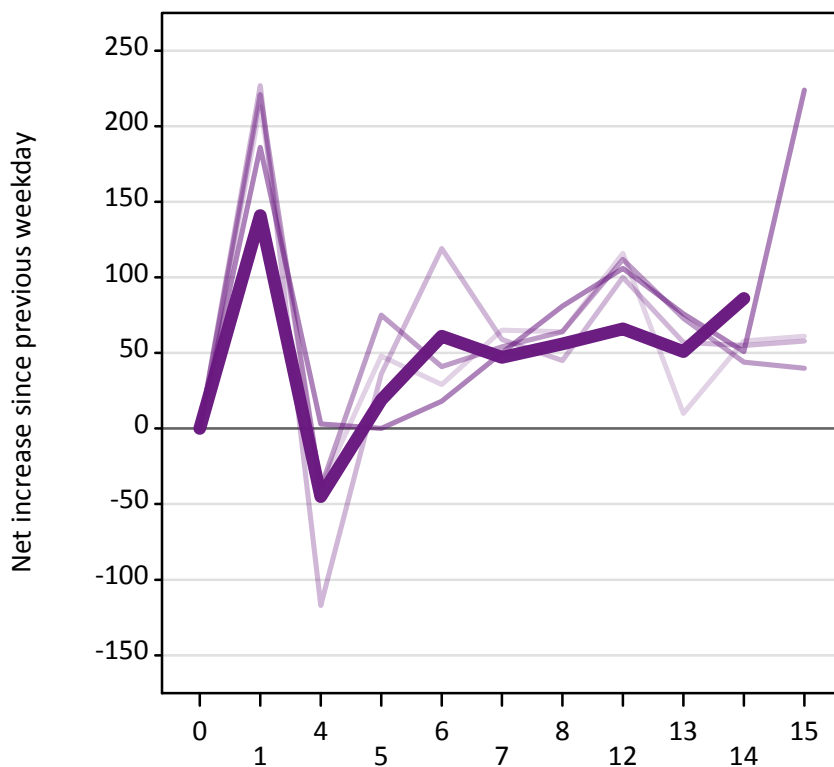
A.23 Holding Offer: Daily net change (from the EU - excluding UK)

Net increase since previous weekday (2017 cycle up to 14 days after A level results day)

Applicant status, days since A level results day		2013	2014	2015	2016	2017
Holding Offer	0	0	0	0	0	0
	1	-750	-770	-840	-890	-880
	4	-660	-670	-740	-790	-710
	5	-390	-450	-530	-400	-410
	6	-350	-450	-430	-330	-360
	7	-360	-370	-370	-360	-300
	8	-320	-330	-360	-330	-320
	12	-340	-290	-590	-360	-290
	13	-170	-250	-240	-280	-210
	14	-250	-240	-230	-300	-300
	15	-210	-220	-200	-380	

A.24 Free to be placed in Clearing: Daily net change (from the EU - excluding UK)

Net increase since previous weekday (2017 cycle up to 14 days after A level results day)



A.25 Free to be placed in Clearing: Daily net change (from the EU - excluding UK)

Net increase since previous weekday (2017 cycle up to 14 days after A level results day)

Applicant status, days since A level results day		2013	2014	2015	2016	2017
Free to be placed in Clearing	0	0	0	0	0	0
	1	210	230	220	190	140
	4	-40	-120	-40	0	-50
	5	50	40	80	0	20
	6	30	120	40	20	60
	7	70	60	50	50	50
	8	60	50	60	80	60
	12	120	100	110	110	70
	13	10	60	70	80	50
	14	60	60	40	50	90
	15	60	60	40	220	