

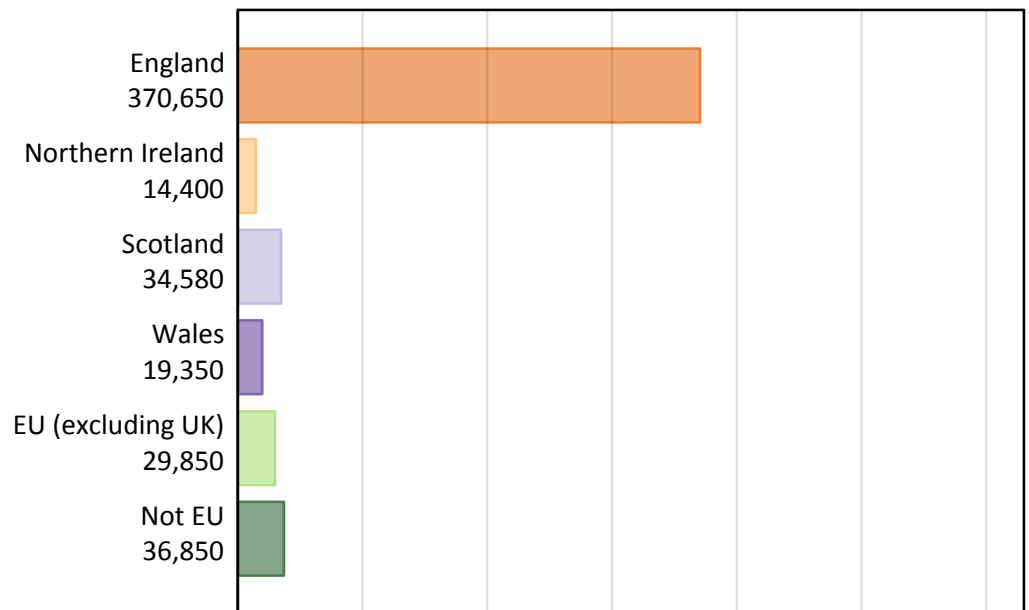
Daily Clearing Analysis: Country

Analysis at 00:05 on Thursday 14 September 2017 (28 days after A level results day)

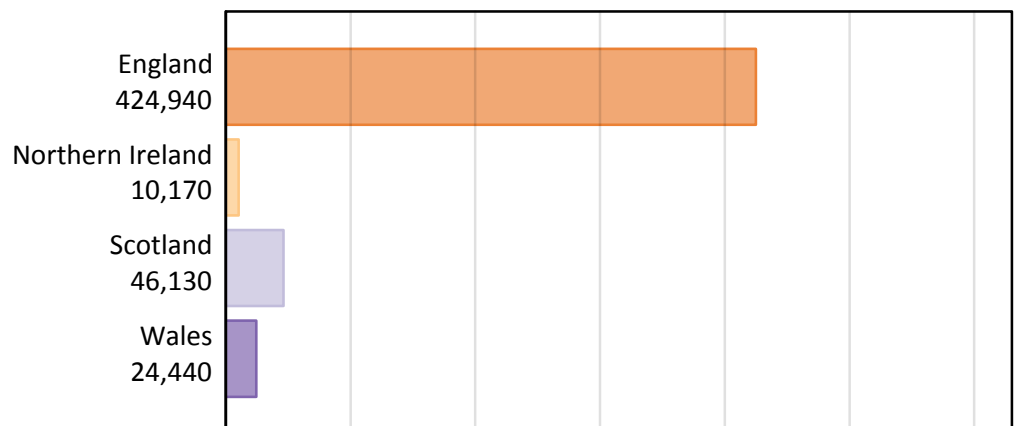
B.1 Placed applicants by country of provider and domicile, 2017 cycle

Domicile of applicant	Country of provider				
	England	Northern Ireland	Scotland	Wales	UK
England	354,810	340	4,980	10,520	370,650
Northern Ireland	3,950	9,170	1,100	170	14,400
Scotland	1,590	30	32,910	50	34,580
Wales	8,130	20	130	11,080	19,350
EU (excluding UK)	23,970	370	4,050	1,460	29,850
Not EU	32,480	240	2,970	1,170	36,850
All	424,940	10,170	46,130	24,440	505,680

B.2 Placed applicants by domicile group

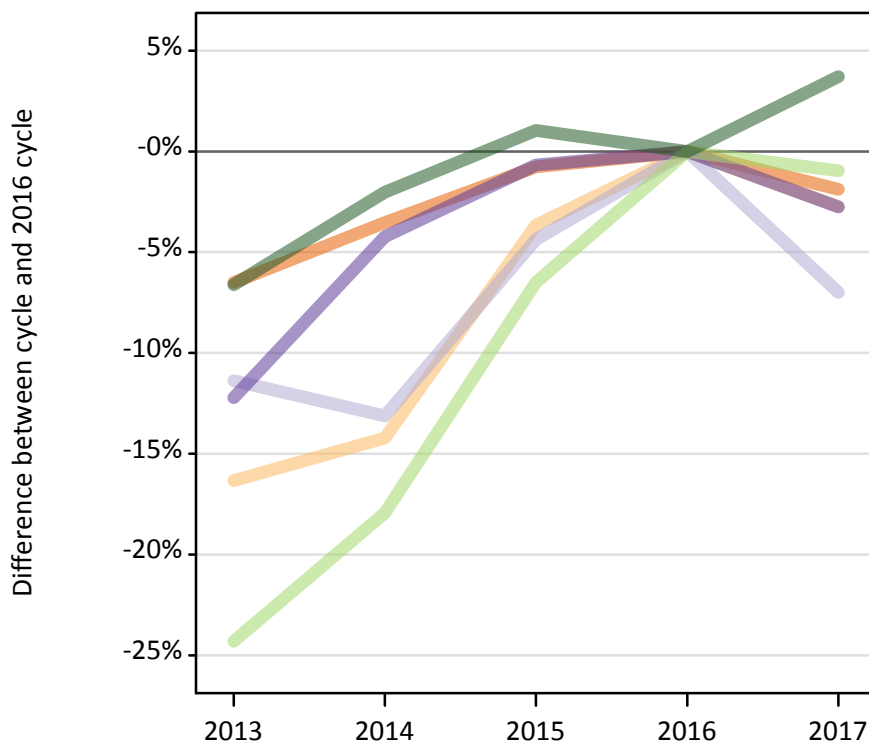


B.3 Placed applicants by country of provider



B.4 Placed applicants at 28 days after A level results day: providers in England

Selected applicant domiciles: difference between cycle and 2016 cycle (at 28 days after A level results day)



B.5 Placed applicants at 28 days after A level results day: providers in England

Placed applicants by domicile (at 28 days after A level results day)

Domicile of applicant	2013	2014	2015	2016	2017
England	338,100	348,820	358,850	361,610	354,810
Northern Ireland	3,400	3,490	3,920	4,070	3,950
Scotland	1,520	1,490	1,640	1,710	1,590
Wales	7,340	8,010	8,310	8,360	8,130
EU (excluding UK)	18,320	19,860	22,630	24,200	23,970
Not EU	29,250	30,680	31,650	31,320	32,480

B.6 Placed applicants at 28 days after A level results day: providers in England

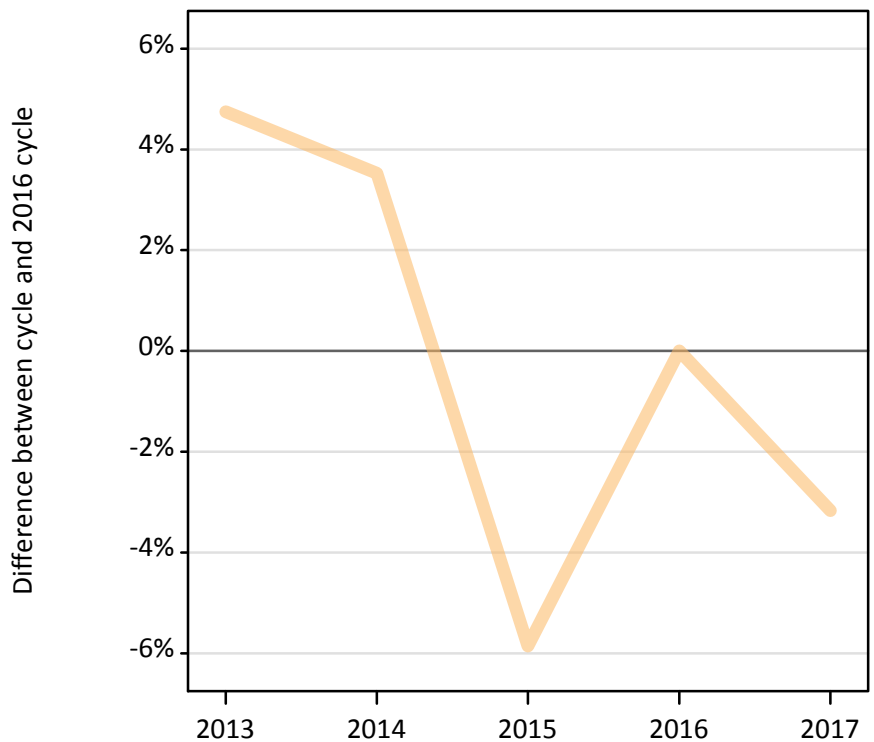
Selected applicant domiciles: difference between cycle and 2016 cycle (at 28 days after A level results day)

Domicile of applicant	2013	2014	2015	2016	2017
England	-7%	-4%	-1%	0%	-2%
Northern Ireland	-16%	-14%	-4%	0%	-3%
Scotland	-11%	-13%	-4%	0%	-7%
Wales	-12%	-4%	-1%	0%	-3%
EU (excluding UK)	-24%	-18%	-6%	0%	-1%
Not EU	-7%	-2%	1%	0%	4%

B.7 Placed applicants at 28 days after A level results day: providers in Northern Ireland

Selected applicant domiciles: difference between cycle and 2016 cycle (at 28 days after A level results day)

— Northern Ireland



B.8 Placed applicants at 28 days after A level results day: providers in Northern Ireland

Placed applicants by domicile (at 28 days after A level results day)

Domicile of applicant	2013	2014	2015	2016	2017
England	260	520	570	330	340
Northern Ireland	9,920	9,810	8,920	9,470	9,170
Scotland	20	20	20	20	30
Wales	10	10	10	10	20
EU (excluding UK)	410	450	390	340	370
Not EU	190	220	180	250	240

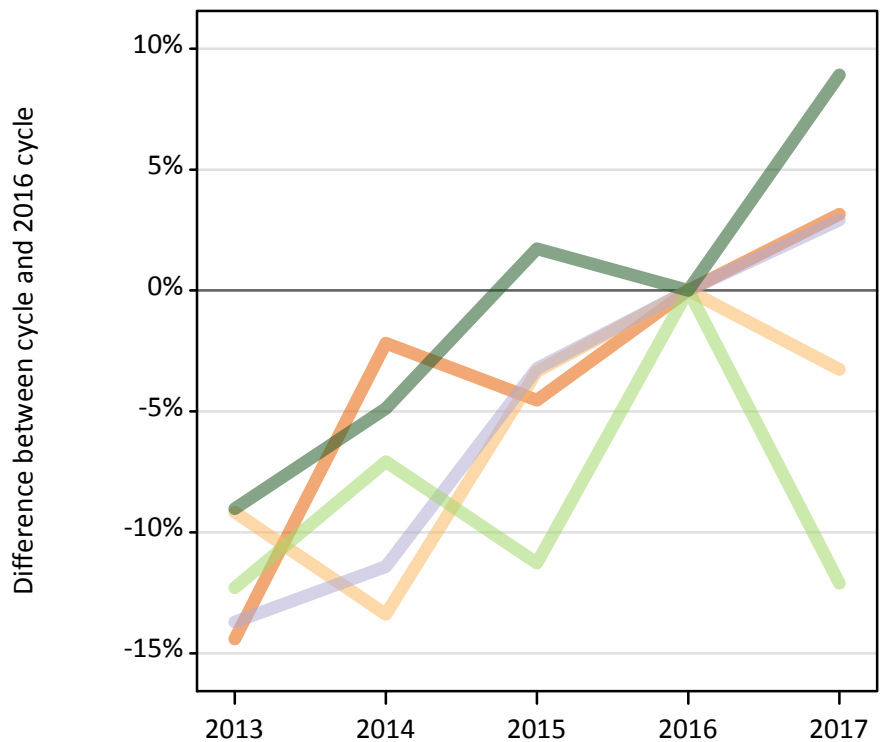
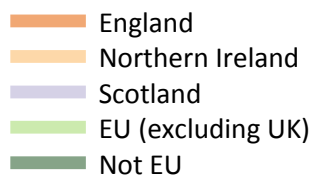
B.9 Placed applicants at 28 days after A level results day: providers in Northern Ireland

Selected applicant domiciles: difference between cycle and 2016 cycle (at 28 days after A level results day)

Domicile of applicant	2013	2014	2015	2016	2017
Northern Ireland	5%	4%	-6%	0%	-3%

B.10 Placed applicants at 28 days after A level results day: providers in Scotland

Selected applicant domiciles: difference between cycle and 2016 cycle (at 28 days after A level results day)



B.11 Placed applicants at 28 days after A level results day: providers in Scotland

Placed applicants by domicile (at 28 days after A level results day)

Domicile of applicant	2013	2014	2015	2016	2017
England	4,130	4,720	4,610	4,820	4,980
Northern Ireland	1,030	980	1,100	1,140	1,100
Scotland	27,600	28,330	30,950	31,980	32,910
Wales	100	110	120	130	130
EU (excluding UK)	4,040	4,280	4,090	4,610	4,050
Not EU	2,480	2,590	2,770	2,730	2,970

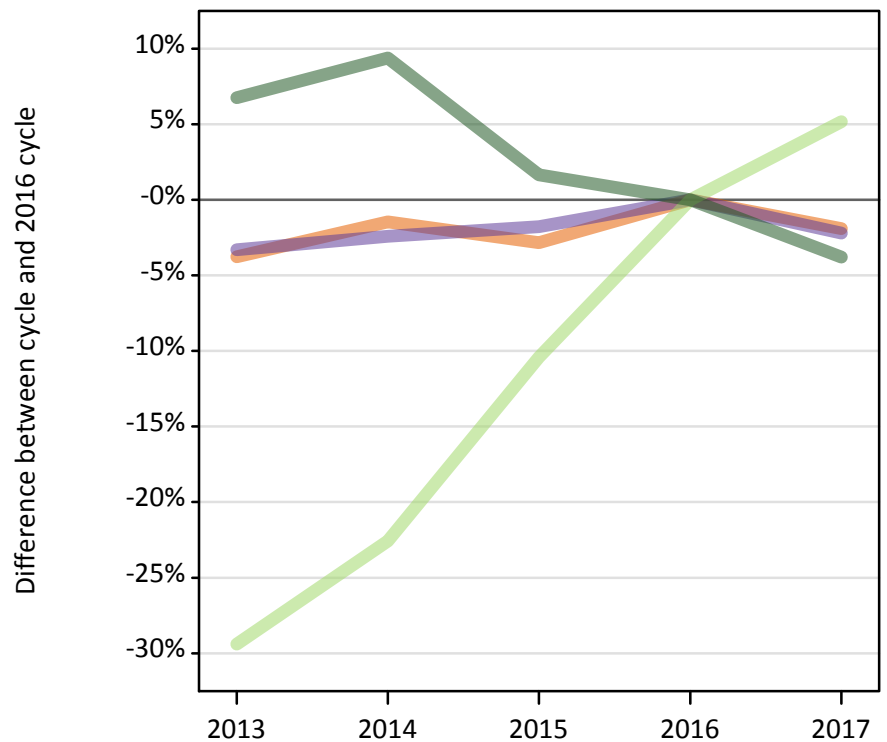
B.12 Placed applicants at 28 days after A level results day: providers in Scotland

Selected applicant domiciles: difference between cycle and 2016 cycle (at 28 days after A level results day)

Domicile of applicant	2013	2014	2015	2016	2017
England	-14%	-2%	-5%	0%	3%
Northern Ireland	-9%	-13%	-3%	0%	-3%
Scotland	-14%	-11%	-3%	0%	3%
EU (excluding UK)	-12%	-7%	-11%	0%	-12%
Not EU	-9%	-5%	2%	0%	9%

B.13 Placed applicants at 28 days after A level results day: providers in Wales

Selected applicant domiciles: difference between cycle and 2016 cycle (at 28 days after A level results day)



B.14 Placed applicants at 28 days after A level results day: providers in Wales

Placed applicants by domicile (at 28 days after A level results day)

Domicile of applicant	2013	2014	2015	2016	2017
England	10,320	10,570	10,420	10,720	10,520
Northern Ireland	160	150	170	190	170
Scotland	60	60	50	50	50
Wales	10,950	11,050	11,120	11,330	11,080
EU (excluding UK)	980	1,080	1,250	1,390	1,460
Not EU	1,300	1,330	1,230	1,210	1,170

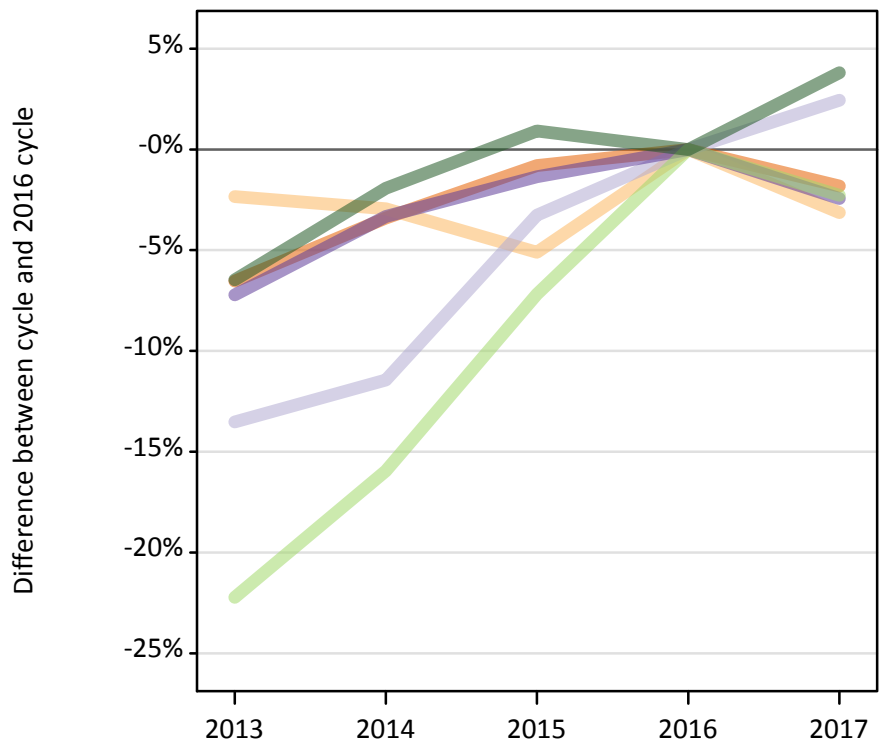
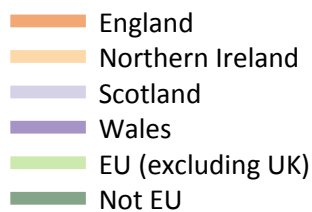
B.15 Placed applicants at 28 days after A level results day: providers in Wales

Selected applicant domiciles: difference between cycle and 2016 cycle (at 28 days after A level results day)

Domicile of applicant	2013	2014	2015	2016	2017
England	-4%	-1%	-3%	0%	-2%
Wales	-3%	-2%	-2%	0%	-2%
EU (excluding UK)	-29%	-23%	-10%	0%	5%
Not EU	7%	9%	2%	0%	-4%

B.16 Placed applicants at 28 days after A level results day: providers in the UK

Selected applicant domiciles: difference between cycle and 2016 cycle (at 28 days after A level results day)



B.17 Placed applicants at 28 days after A level results day: providers in the UK

Placed applicants by domicile (at 28 days after A level results day)

Domicile of applicant	2013	2014	2015	2016	2017
England	352,810	364,620	374,440	377,480	370,650
Northern Ireland	14,520	14,430	14,110	14,860	14,400
Scotland	29,200	29,900	32,660	33,760	34,580
Wales	18,400	19,180	19,560	19,830	19,350
EU (excluding UK)	23,750	25,670	28,350	30,540	29,850
Not EU	33,210	34,820	35,830	35,500	36,850

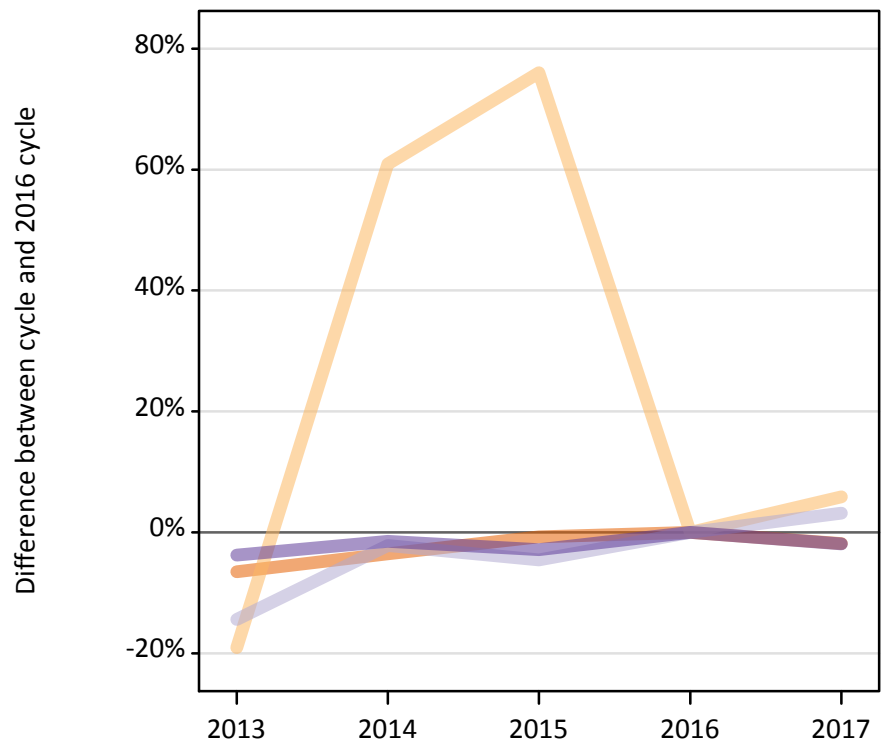
B.18 Placed applicants at 28 days after A level results day: providers in the UK

Selected applicant domiciles: difference between cycle and 2016 cycle (at 28 days after A level results day)

Domicile of applicant	2013	2014	2015	2016	2017
England	-7%	-3%	-1%	0%	-2%
Northern Ireland	-2%	-3%	-5%	0%	-3%
Scotland	-14%	-11%	-3%	0%	2%
Wales	-7%	-3%	-1%	0%	-2%
EU (excluding UK)	-22%	-16%	-7%	0%	-2%
Not EU	-6%	-2%	1%	0%	4%

B.19 Placed applicants at 28 days after A level results day: domiciled in England

Selected provider countries: difference between cycle and 2016 cycle (at 28 days after A level results day)



B.20 Placed applicants at 28 days after A level results day: domiciled in England

Placed applicants by provider country (at 28 days after A level results day)

Country of provider	2013	2014	2015	2016	2017
England	338,100	348,820	358,850	361,610	354,810
Northern Ireland	260	520	570	330	340
Scotland	4,130	4,720	4,610	4,820	4,980
Wales	10,320	10,570	10,420	10,720	10,520

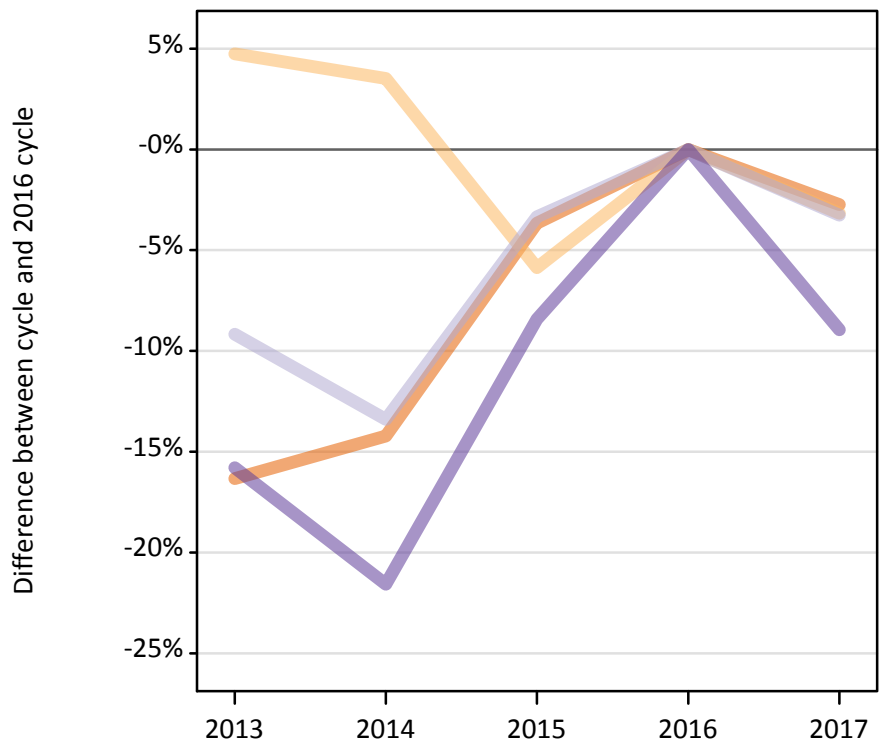
B.21 Placed applicants at 28 days after A level results day: domiciled in England

Selected provider countries: difference between cycle and 2016 cycle (at 28 days after A level results day)

Country of provider	2013	2014	2015	2016	2017
England	-7%	-4%	-1%	0%	-2%
Northern Ireland	-19%	61%	76%	0%	6%
Scotland	-14%	-2%	-5%	0%	3%
Wales	-4%	-1%	-3%	0%	-2%

B.22 Placed applicants at 28 days after A level results day: domiciled in Northern Ireland

Selected provider countries: difference between cycle and 2016 cycle (at 28 days after A level results day)



B.23 Placed applicants at 28 days after A level results day: domiciled in Northern Ireland

Placed applicants by provider country (at 28 days after A level results day)

Country of provider	2013	2014	2015	2016	2017
England	3,400	3,490	3,920	4,070	3,950
Northern Ireland	9,920	9,810	8,920	9,470	9,170
Scotland	1,030	980	1,100	1,140	1,100
Wales	160	150	170	190	170

B.24 Placed applicants at 28 days after A level results day: domiciled in Northern Ireland

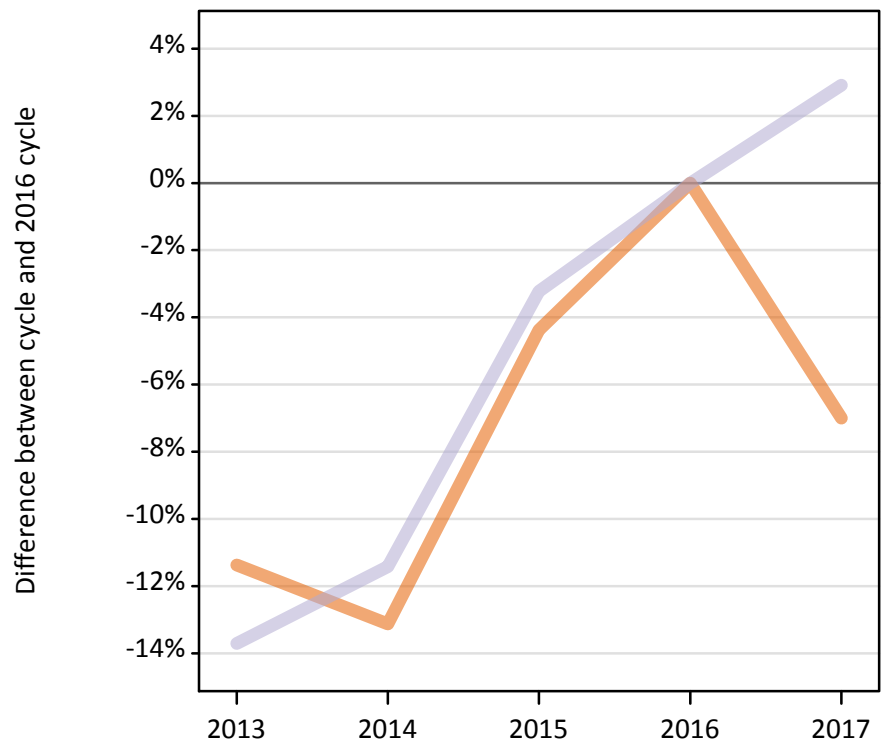
Selected provider countries: difference between cycle and 2016 cycle (at 28 days after A level results day)

Country of provider	2013	2014	2015	2016	2017
England	-16%	-14%	-4%	0%	-3%
Northern Ireland	5%	4%	-6%	0%	-3%
Scotland	-9%	-13%	-3%	0%	-3%
Wales	-16%	-22%	-8%	0%	-9%

B.25 Placed applicants at 28 days after A level results day: domiciled in Scotland

Selected provider countries: difference between cycle and 2016 cycle (at 28 days after A level results day)

— England
— Scotland



B.26 Placed applicants at 28 days after A level results day: domiciled in Scotland

Placed applicants by provider country (at 28 days after A level results day)

Country of provider	2013	2014	2015	2016	2017
England	1,520	1,490	1,640	1,710	1,590
Northern Ireland	20	20	20	20	30
Scotland	27,600	28,330	30,950	31,980	32,910
Wales	60	60	50	50	50

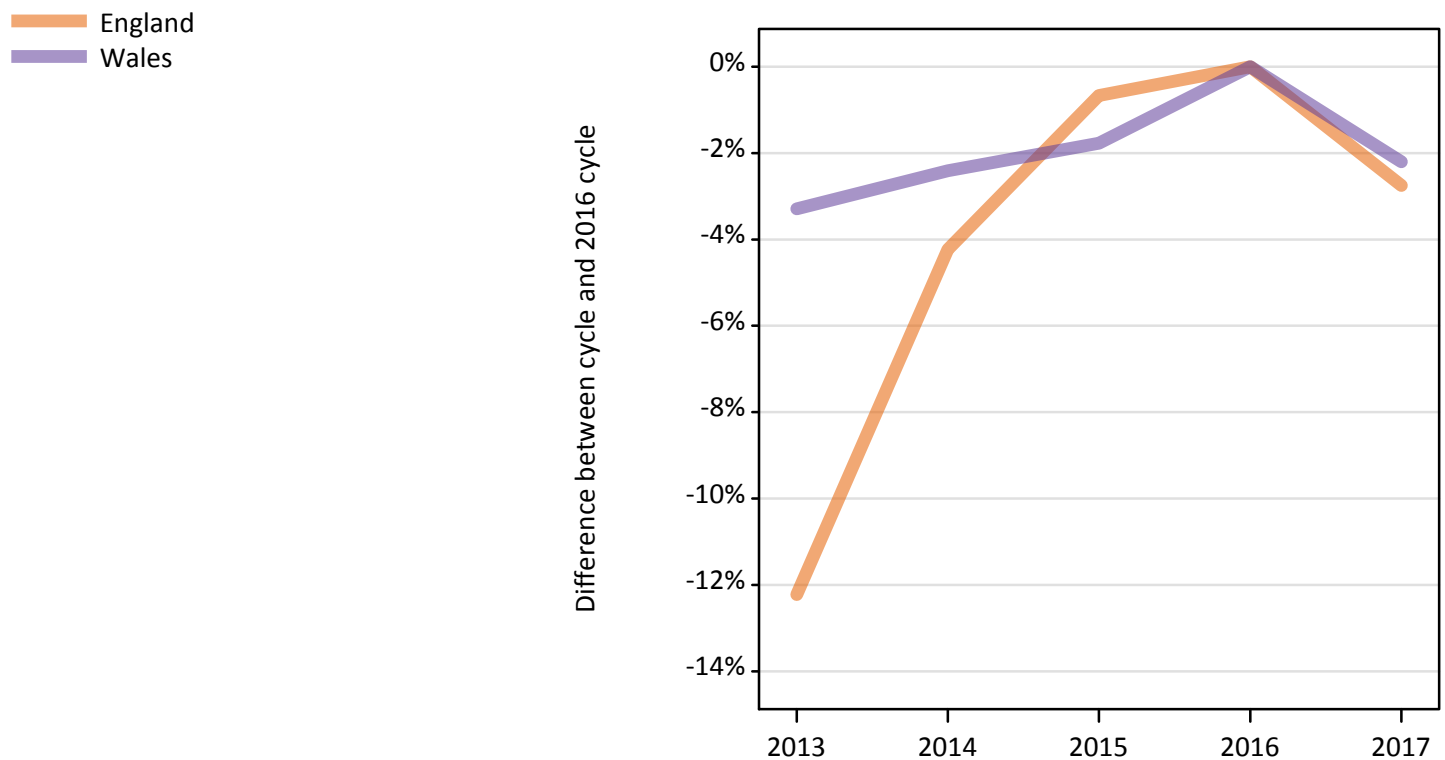
B.27 Placed applicants at 28 days after A level results day: domiciled in Scotland

Selected provider countries: difference between cycle and 2016 cycle (at 28 days after A level results day)

Country of provider	2013	2014	2015	2016	2017
England	-11%	-13%	-4%	0%	-7%
Scotland	-14%	-11%	-3%	0%	3%

B.28 Placed applicants at 28 days after A level results day: domiciled in Wales

Selected provider countries: difference between cycle and 2016 cycle (at 28 days after A level results day)



B.29 Placed applicants at 28 days after A level results day: domiciled in Wales

Placed applicants by provider country (at 28 days after A level results day)

Country of provider	2013	2014	2015	2016	2017
England	7,340	8,010	8,310	8,360	8,130
Northern Ireland	10	10	10	10	20
Scotland	100	110	120	130	130
Wales	10,950	11,050	11,120	11,330	11,080

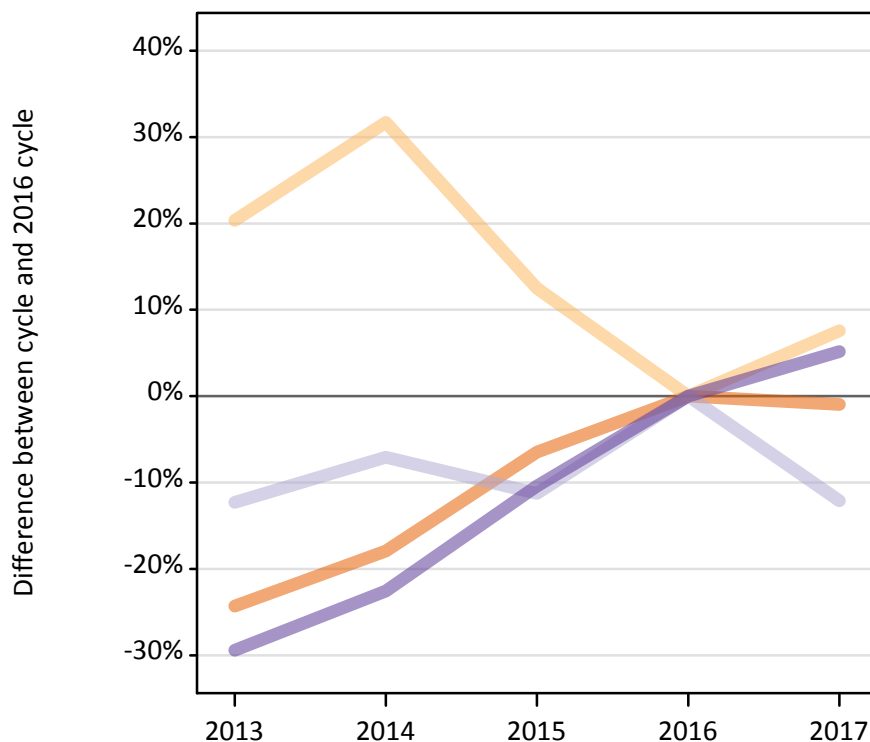
B.30 Placed applicants at 28 days after A level results day: domiciled in Wales

Selected provider countries: difference between cycle and 2016 cycle (at 28 days after A level results day)

Country of provider	2013	2014	2015	2016	2017
England	-12%	-4%	-1%	0%	-3%
Wales	-3%	-2%	-2%	0%	-2%

B.31 Placed applicants at 28 days after A level results day: domiciled in EU (excluding UK)

Selected provider countries: difference between cycle and 2016 cycle (at 28 days after A level results day)



B.32 Placed applicants at 28 days after A level results day: domiciled in EU (excluding UK)

Placed applicants by provider country (at 28 days after A level results day)

Country of provider	2013	2014	2015	2016	2017
England	18,320	19,860	22,630	24,200	23,970
Northern Ireland	410	450	390	340	370
Scotland	4,040	4,280	4,090	4,610	4,050
Wales	980	1,080	1,250	1,390	1,460

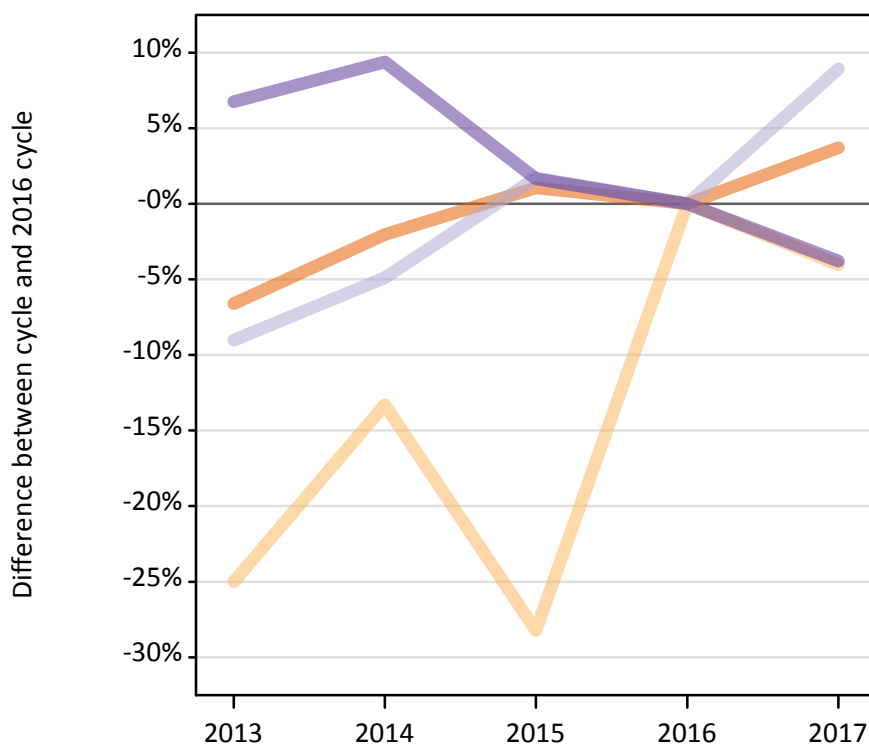
B.33 Placed applicants at 28 days after A level results day: domiciled in EU (excluding UK)

Selected provider countries: difference between cycle and 2016 cycle (at 28 days after A level results day)

Country of provider	2013	2014	2015	2016	2017
England	-24%	-18%	-6%	0%	-1%
Northern Ireland	20%	32%	13%	0%	8%
Scotland	-12%	-7%	-11%	0%	-12%
Wales	-29%	-23%	-10%	0%	5%

B.34 Placed applicants at 28 days after A level results day: domiciled in Not EU

Selected provider countries: difference between cycle and 2016 cycle (at 28 days after A level results day)



B.35 Placed applicants at 28 days after A level results day: domiciled in Not EU

Placed applicants by provider country (at 28 days after A level results day)

Country of provider	2013	2014	2015	2016	2017
England	29,250	30,680	31,650	31,320	32,480
Northern Ireland	190	220	180	250	240
Scotland	2,480	2,590	2,770	2,730	2,970
Wales	1,300	1,330	1,230	1,210	1,170

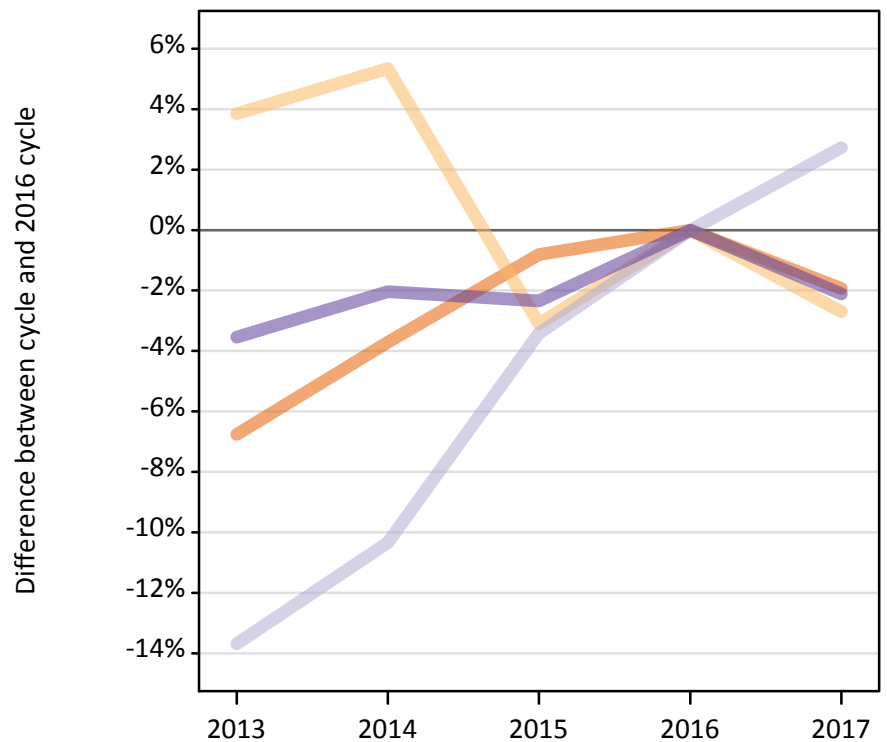
B.36 Placed applicants at 28 days after A level results day: domiciled in Not EU

Selected provider countries: difference between cycle and 2016 cycle (at 28 days after A level results day)

Country of provider	2013	2014	2015	2016	2017
England	-7%	-2%	1%	0%	4%
Northern Ireland	-25%	-13%	-28%	0%	-4%
Scotland	-9%	-5%	2%	0%	9%
Wales	7%	9%	2%	0%	-4%

B.37 Placed applicants at 28 days after A level results day: domiciled in UK

Selected provider countries: difference between cycle and 2016 cycle (at 28 days after A level results day)



B.38 Placed applicants at 28 days after A level results day: domiciled in UK

Placed applicants by provider country (at 28 days after A level results day)

Country of provider	2013	2014	2015	2016	2017
England	350,360	361,800	372,710	375,750	368,490
Northern Ireland	10,210	10,360	9,530	9,830	9,560
Scotland	32,860	34,140	36,770	38,070	39,110
Wales	21,490	21,830	21,760	22,280	21,810

B.39 Placed applicants at 28 days after A level results day: domiciled in UK

Selected provider countries: difference between cycle and 2016 cycle (at 28 days after A level results day)

Country of provider	2013	2014	2015	2016	2017
England	-7%	-4%	-1%	0%	-2%
Northern Ireland	4%	5%	-3%	0%	-3%
Scotland	-14%	-10%	-3%	0%	3%
Wales	-4%	-2%	-2%	0%	-2%