

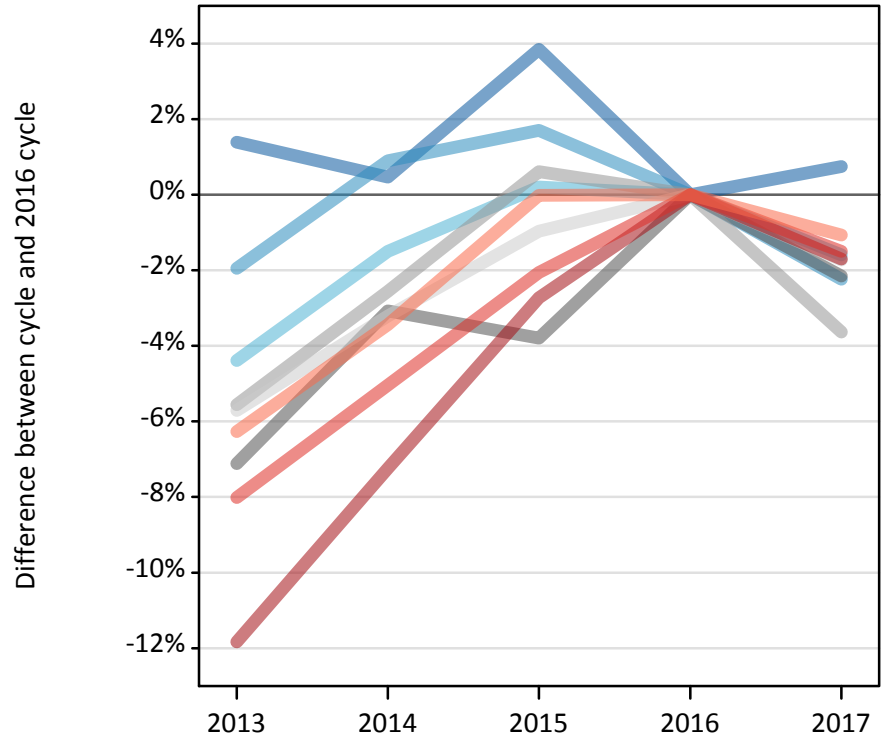
# Daily Clearing Analysis: Region

Analysis at 00:05 on Thursday 14 September 2017 (28 days after A level results day)

## R.1 Placed applicants by region of domicile: 28 days after A level results day

Placed applicants: change relative to 2016 cycle totals

- North East
- North West
- Yorkshire and The Humber
- East Midlands
- West Midlands
- East of England
- London
- South East
- South West



## R.2 Placed applicants by region of domicile: 28 days after A level results day

Applicant Status	Domicile	2013	2014	2015	2016	2017
Placed	North East	15,930	15,790	16,320	15,710	15,830
	North West	48,040	49,430	49,830	48,990	47,900
	Yorkshire and The Humber	32,930	33,920	34,510	34,440	33,890
	East Midlands	27,160	28,350	28,140	29,250	28,620
	West Midlands	37,650	38,840	40,110	39,860	38,410
	East of England	36,530	37,500	38,370	38,740	38,070
	London	66,040	69,470	72,860	74,900	73,630
	South East	56,140	57,960	59,780	61,030	60,120
	South West	32,390	33,370	34,550	34,550	34,190
	(England total)	352,810	364,620	374,440	377,480	370,650
	Scotland	29,200	29,900	32,660	33,760	34,580
	Northern Ireland	14,520	14,430	14,110	14,860	14,400
	Wales	18,400	19,180	19,560	19,830	19,350
	UK	414,920	428,120	440,770	445,940	438,980

### R.3 Placed applicants by region of domicile: 28 days after A level results day

Placed applicants: change relative to 2016 cycle totals

Applicant Status	Domicile	2013	2014	2015	2016	2017
Placed	North East	1%	0%	4%	0%	1%
	North West	-2%	1%	2%	0%	-2%
	Yorkshire and The Humber	-4%	-2%	0%	0%	-2%
	East Midlands	-7%	-3%	-4%	0%	-2%
	West Midlands	-6%	-3%	1%	0%	-4%
	East of England	-6%	-3%	-1%	0%	-2%
	London	-12%	-7%	-3%	0%	-2%
	South East	-8%	-5%	-2%	0%	-2%
	South West	-6%	-3%	-0%	0%	-1%
	(England total)	-7%	-3%	-1%	0%	-2%
	Scotland	-14%	-11%	-3%	0%	2%
	Northern Ireland	-2%	-3%	-5%	0%	-3%
	Wales	-7%	-3%	-1%	0%	-2%
	UK	-7%	-4%	-1%	0%	-2%

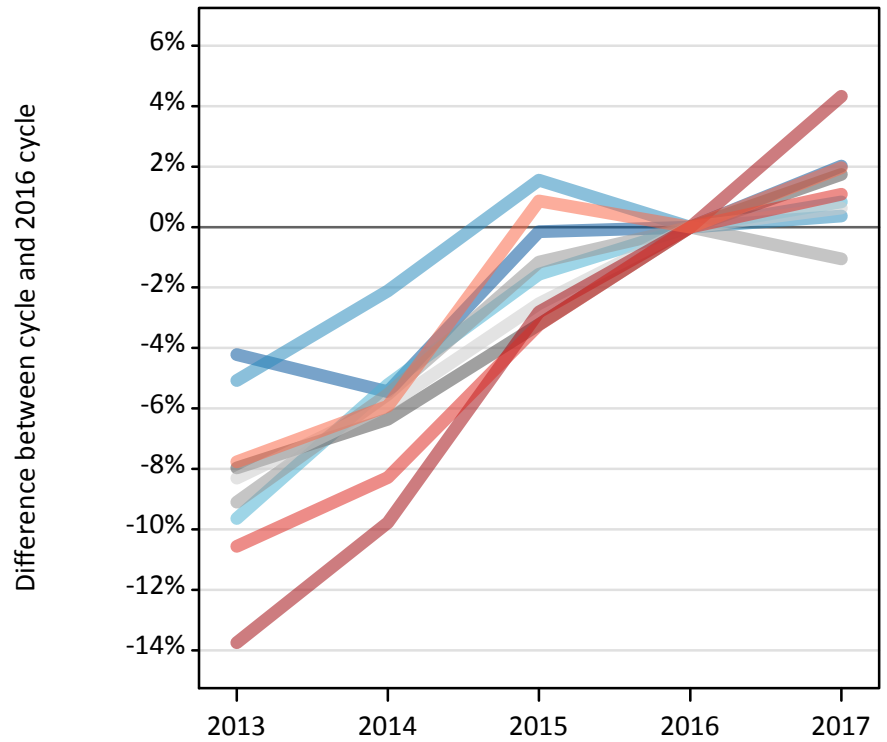
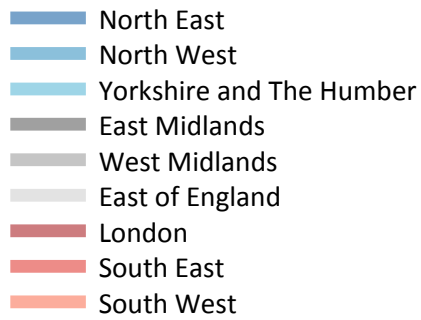
### R.4 Placed applicants by region of domicile: 28 days after A level results day

Placed applicants: absolute change relative to 2016 cycle totals

Applicant Status	Domicile	2013	2014	2015	2016	2017
Placed	North East	220	70	600	0	120
	North West	-950	440	840	0	-1,100
	Yorkshire and The Humber	-1,510	-520	70	0	-550
	East Midlands	-2,080	-900	-1,110	0	-630
	West Midlands	-2,220	-1,020	250	0	-1,450
	East of England	-2,210	-1,240	-380	0	-670
	London	-8,870	-5,430	-2,040	0	-1,270
	South East	-4,890	-3,080	-1,260	0	-920
	South West	-2,170	-1,190	-10	0	-370
	(England total)	-24,680	-12,860	-3,040	0	-6,830
	Scotland	-4,560	-3,860	-1,100	0	820
	Northern Ireland	-350	-440	-760	0	-470
	Wales	-1,430	-660	-270	0	-480
	UK	-31,020	-17,820	-5,170	0	-6,960

### R.5 Placed 18 year old applicants by region of domicile: 28 days after A level results day

Placed 18 year old applicants: change relative to 2016 cycle totals



### R.6 Placed 18 year old applicants by region of domicile: 28 days after A level results day

Applicant Status	Domicile	2013	2014	2015	2016	2017
Placed	North East	8,190	8,090	8,540	8,550	8,730
	North West	25,650	26,450	27,440	27,020	27,120
	Yorkshire and The Humber	17,410	18,260	18,970	19,270	19,430
	East Midlands	14,860	15,120	15,620	16,140	16,420
	West Midlands	19,660	20,430	21,380	21,630	21,400
	East of England	21,000	21,560	22,330	22,910	23,050
	London	31,710	33,170	35,740	36,770	38,360
	South East	31,400	32,200	33,970	35,110	35,490
	South West	16,030	16,350	17,530	17,380	17,730
	(England total)	185,910	191,630	201,510	204,780	207,720
	Scotland	14,200	14,310	14,410	14,590	14,610
	Northern Ireland	8,820	8,520	8,420	8,580	8,410
	Wales	9,720	10,100	10,560	10,700	10,350
	UK	218,650	224,560	234,900	238,650	241,090

## R.7 Placed 18 year old applicants by region of domicile: 28 days after A level results day

Placed 18 year old applicants: change relative to 2016 cycle totals

Applicant Status	Domicile	2013	2014	2015	2016	2017
Placed	North East	-4%	-5%	-0%	0%	2%
	North West	-5%	-2%	2%	0%	0%
	Yorkshire and The Humber	-10%	-5%	-2%	0%	1%
	East Midlands	-8%	-6%	-3%	0%	2%
	West Midlands	-9%	-6%	-1%	0%	-1%
	East of England	-8%	-6%	-3%	0%	1%
	London	-14%	-10%	-3%	0%	4%
	South East	-11%	-8%	-3%	0%	1%
	South West	-8%	-6%	1%	0%	2%
	(England total)	-9%	-6%	-2%	0%	1%
	Scotland	-3%	-2%	-1%	0%	0%
	Northern Ireland	3%	-1%	-2%	0%	-2%
	Wales	-9%	-6%	-1%	0%	-3%
	UK	-8%	-6%	-2%	0%	1%

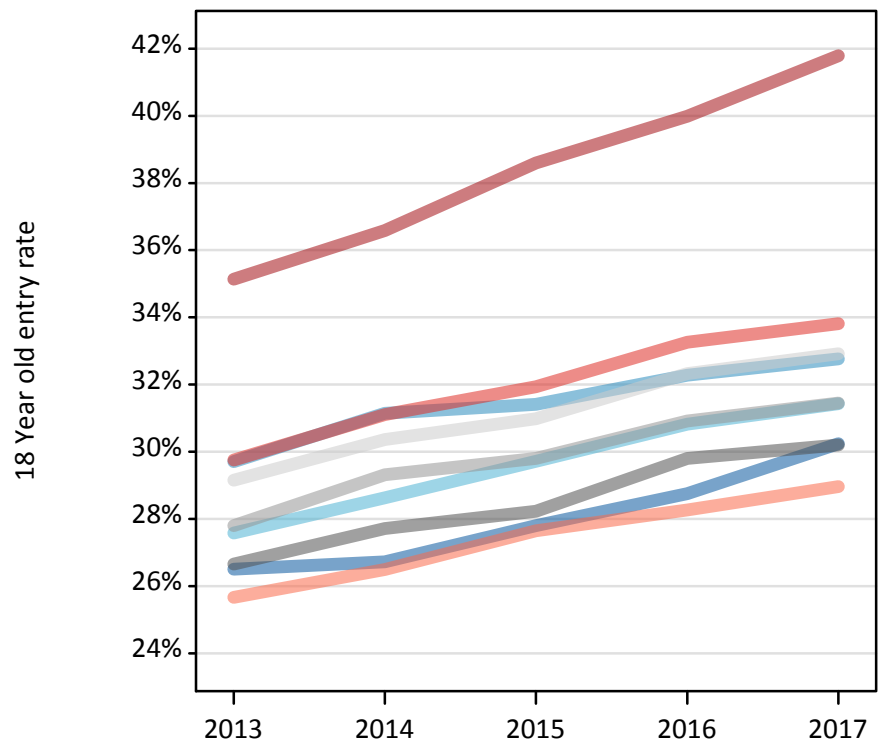
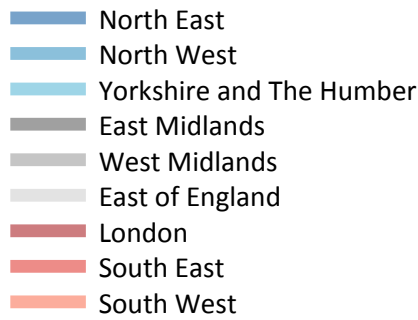
## R.8 Placed 18 year old applicants by region of domicile: 28 days after A level results day

Placed 18 year old applicants: absolute change relative to 2016 cycle totals

Applicant Status	Domicile	2013	2014	2015	2016	2017
Placed	North East	-360	-470	-10	0	170
	North West	-1,370	-570	420	0	100
	Yorkshire and The Humber	-1,860	-1,010	-300	0	160
	East Midlands	-1,290	-1,030	-520	0	280
	West Midlands	-1,970	-1,200	-250	0	-230
	East of England	-1,900	-1,350	-580	0	150
	London	-5,060	-3,600	-1,040	0	1,590
	South East	-3,710	-2,910	-1,140	0	380
	South West	-1,350	-1,030	150	0	340
	(England total)	-18,860	-13,150	-3,270	0	2,950
	Scotland	-390	-280	-180	0	20
	Northern Ireland	230	-60	-160	0	-170
	Wales	-980	-610	-140	0	-350
	UK	-20,000	-14,100	-3,760	0	2,440

### R.9 Placed 18 year old applicants by region of domicile: 28 days after A level results day

Placed 18 year old applicants: entry rate



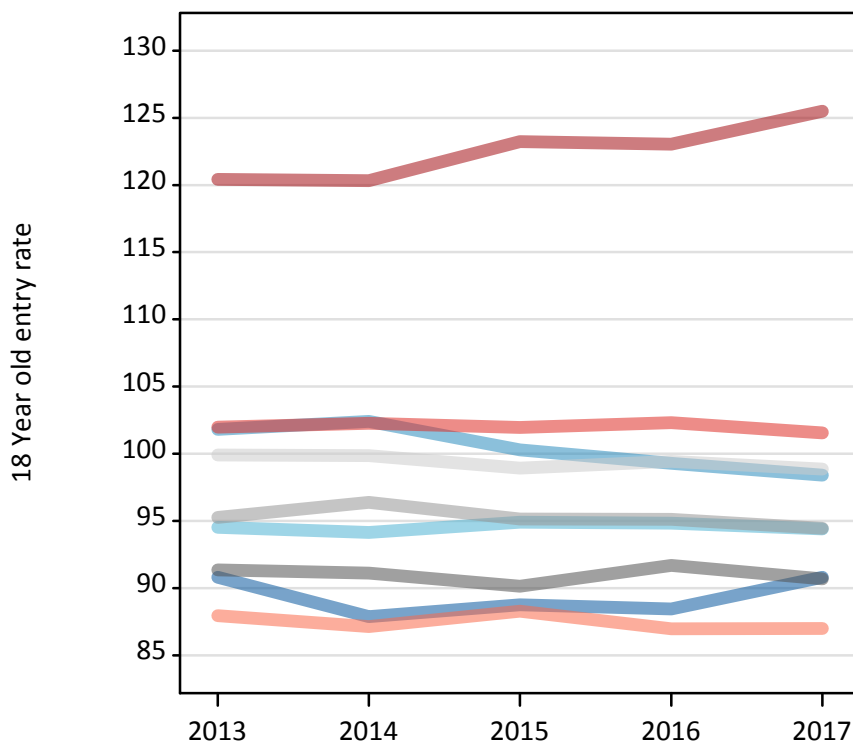
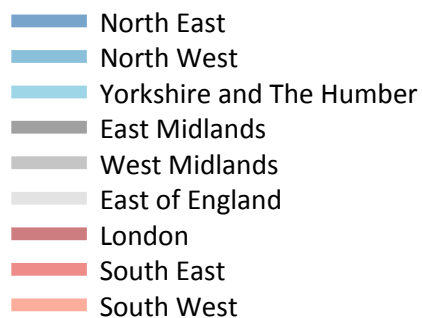
### R.10 Placed 18 year old applicants by region of domicile: 28 days after A level results day

Placed 18 year old applicants: entry rate

Applicant Status	Domicile	2013	2014	2015	2016	2017
Placed	North East	26.5%	26.7%	27.8%	28.8%	30.2%
	North West	29.7%	31.1%	31.4%	32.3%	32.8%
	Yorkshire and The Humber	27.6%	28.6%	29.7%	30.8%	31.4%
	East Midlands	26.7%	27.7%	28.2%	29.8%	30.2%
	West Midlands	27.8%	29.3%	29.8%	30.9%	31.4%
	East of England	29.2%	30.4%	31.0%	32.3%	32.9%
	London	35.1%	36.6%	38.6%	40.0%	41.8%
	South East	29.8%	31.1%	31.9%	33.3%	33.8%
	South West	25.7%	26.5%	27.6%	28.3%	29.0%
	(England total)	29.2%	30.4%	31.3%	32.5%	33.3%
	Scotland	23.1%	23.4%	23.9%	24.8%	25.5%
	Northern Ireland	36.0%	35.1%	33.9%	35.1%	34.8%
	Wales	25.7%	26.9%	28.0%	29.5%	29.1%
	UK	28.7%	29.8%	30.7%	31.8%	32.5%

### R.11 Placed 18 year old applicants by region of domicile: 28 days after A level results day

Placed 18 year old applicants: entry rates (indexed to 100 = England)



### R.12 Placed 18 year old applicants by region of domicile: 28 days after A level results day

Placed 18 year old applicants: entry rate (indexed to 100 = England)

Applicant Status	Domicile	2013	2014	2015	2016	2017
Placed	North East	91	88	89	88	91
	North West	102	102	100	99	98
	Yorkshire and The Humber	95	94	95	95	94
	East Midlands	91	91	90	92	91
	West Midlands	95	96	95	95	94
	East of England	100	100	99	99	99
	London	120	120	123	123	125
	South East	102	102	102	102	102
	South West	88	87	88	87	87
	(England total)	100	100	100	100	100