

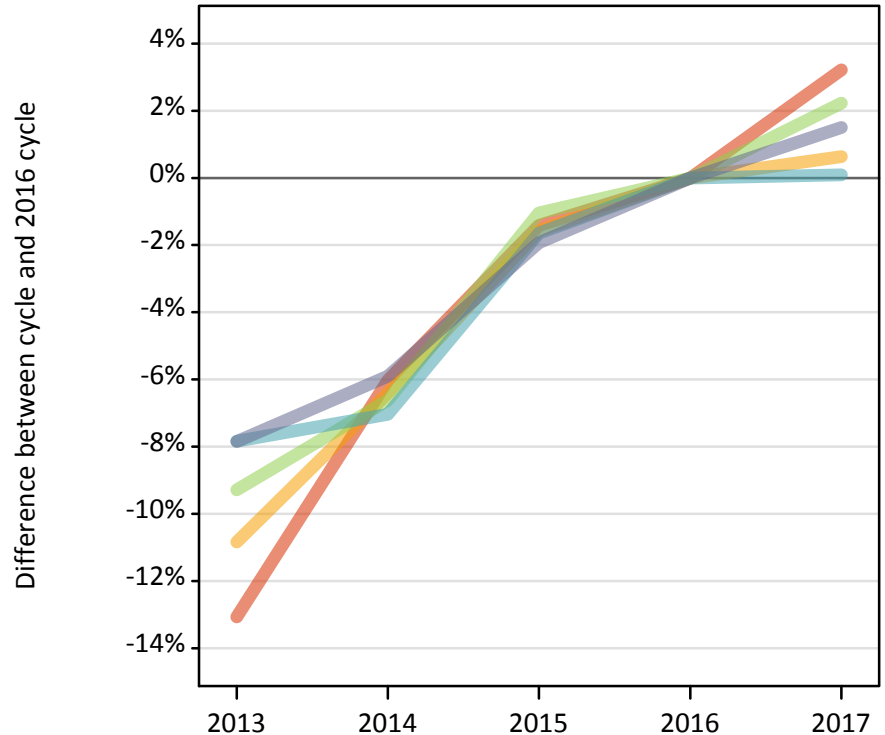
# Daily Clearing Analysis: POLAR3

Analysis at 00:05 on Thursday 14 September 2017 (28 days after A level results day)

## P.1 Placed 18 year old applicants from England by POLAR3 quintile: 28 days after A level results day

Placed 18 year old applicants: change relative to 2016 cycle totals

- Quintile 1
- Quintile 2
- Quintile 3
- Quintile 4
- Quintile 5



## P.2 Placed 18 year old applicants from England by POLAR3 quintile: 28 days after A level results day

Applicant Status	POLAR3	2013	2014	2015	2016	2017
Placed	Quintile 1	19,710	21,300	22,350	22,670	23,400
	Quintile 2	28,470	29,890	31,430	31,940	32,140
	Quintile 3	36,680	37,760	40,010	40,430	41,340
	Quintile 4	43,560	43,940	46,480	47,260	47,310
	Quintile 5	57,200	58,410	60,870	62,070	63,000

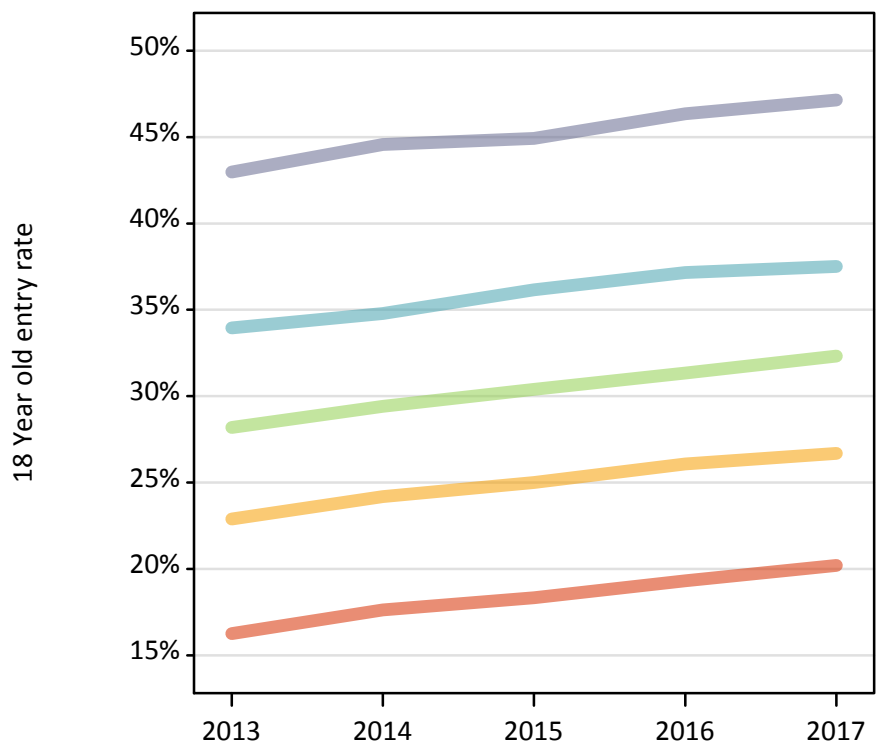
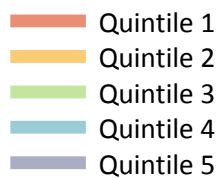
## P.3 Placed 18 year old applicants from England by POLAR3 quintile: 28 days after A level results day

Placed 18 year old applicants: change relative to 2016 cycle totals

Applicant Status	POLAR3	2013	2014	2015	2016	2017
Placed	Quintile 1	-13%	-6%	-1%	0%	3%
	Quintile 2	-11%	-6%	-2%	0%	1%
	Quintile 3	-9%	-7%	-1%	0%	2%
	Quintile 4	-8%	-7%	-2%	0%	0%
	Quintile 5	-8%	-6%	-2%	0%	2%

**P.4 Placed 18 year old applicants from England by POLAR3 quintile: 28 days after A level results day**

Placed 18 year old applicants: entry rate



**P.5 Placed 18 year old applicants from England by POLAR3 quintile: 28 days after A level results day**

Placed 18 year old applicants: entry rate

Applicant Status	POLAR3	2013	2014	2015	2016	2017
Placed	Quintile 1	16.2%	17.6%	18.3%	19.3%	20.2%
	Quintile 2	22.9%	24.2%	25.0%	26.1%	26.7%
	Quintile 3	28.2%	29.4%	30.4%	31.3%	32.3%
	Quintile 4	34.0%	34.8%	36.2%	37.1%	37.5%
	Quintile 5	43.0%	44.6%	44.9%	46.3%	47.2%

**P.6 Placed 18 year old applicants from England by POLAR3 quintile: 28 days after A level results day**

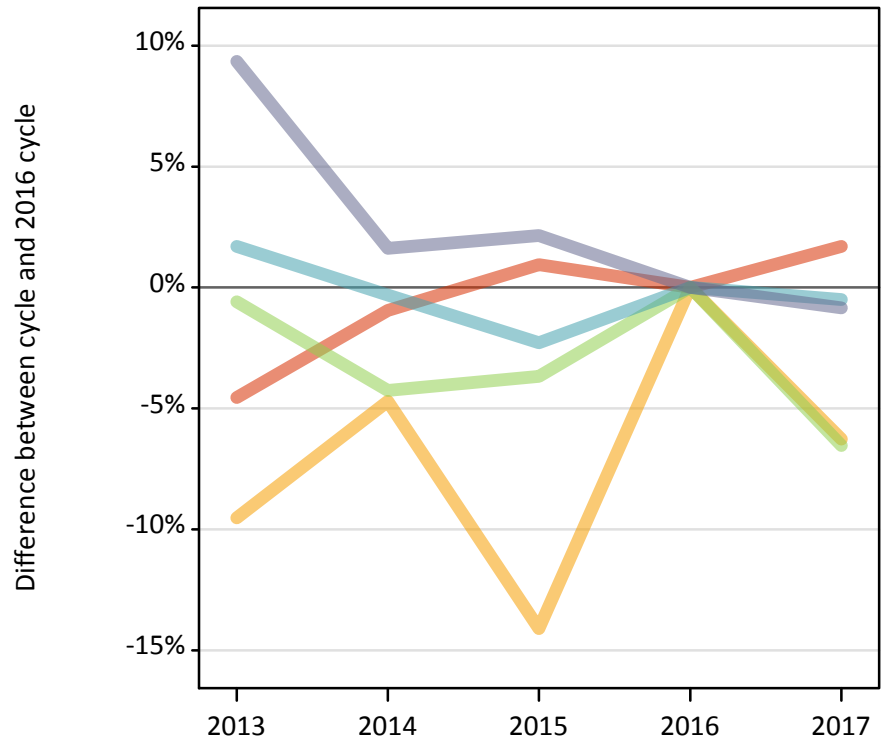
Placed 18 year old applicants: entry rate (indexed to 100 = Quintile 1)

Applicant Status	POLAR3	2013	2014	2015	2016	2017
Placed	Quintile 1	100	100	100	100	100
	Quintile 2	141	137	136	135	132
	Quintile 3	174	167	166	162	160
	Quintile 4	209	197	197	192	186
	Quintile 5	265	253	245	240	233

**P.7 Placed 18 year old applicants from Northern Ireland by POLAR3 quintile: 28 days after A level results day**

Placed 18 year old applicants: change relative to 2016 cycle totals

- Quintile 1
- Quintile 2
- Quintile 3
- Quintile 4
- Quintile 5



**P.8 Placed 18 year old applicants from Northern Ireland by POLAR3 quintile: 28 days after A level results day**

Applicant Status	POLAR3	2013	2014	2015	2016	2017
Placed	Quintile 1	500	520	530	530	540
	Quintile 2	810	850	770	890	840
	Quintile 3	1,350	1,300	1,310	1,360	1,270
	Quintile 4	2,620	2,570	2,520	2,580	2,570
	Quintile 5	3,510	3,260	3,280	3,210	3,180

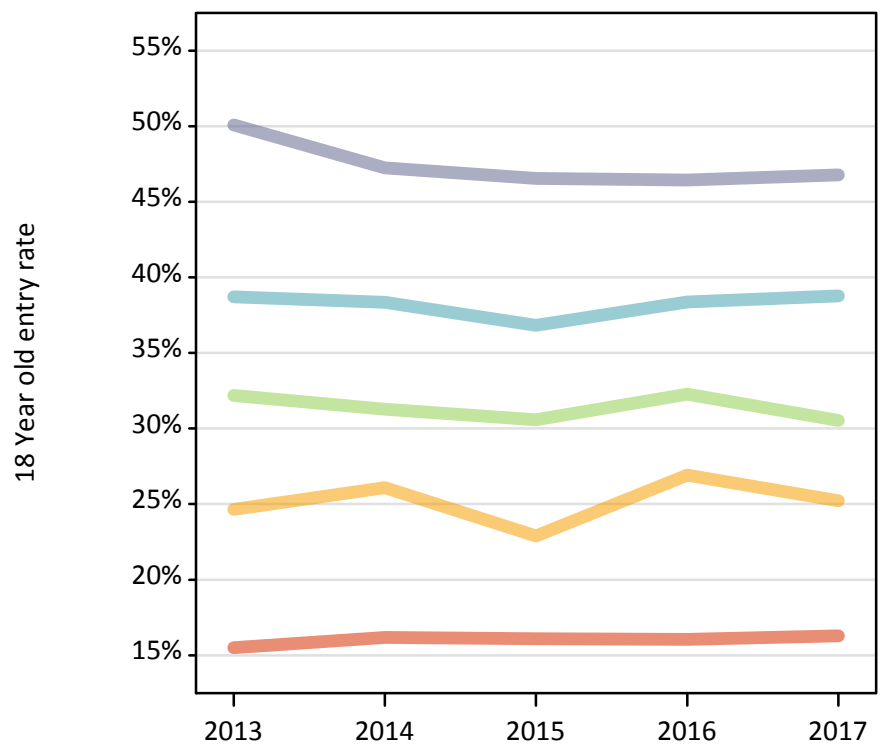
**P.9 Placed 18 year old applicants from Northern Ireland by POLAR3 quintile: 28 days after A level results day**

Placed 18 year old applicants: change relative to 2016 cycle totals

Applicant Status	POLAR3	2013	2014	2015	2016	2017
Placed	Quintile 1	-5%	-1%	1%	0%	2%
	Quintile 2	-10%	-5%	-14%	0%	-6%
	Quintile 3	-1%	-4%	-4%	0%	-7%
	Quintile 4	2%	-0%	-2%	0%	-1%
	Quintile 5	9%	2%	2%	0%	-1%

**P.10 Placed 18 year old applicants from Northern Ireland by POLAR3 quintile: 28 days after A level results day**

Placed 18 year old applicants: entry rate



**P.11 Placed 18 year old applicants from Northern Ireland by POLAR3 quintile: 28 days after A level results day**

Placed 18 year old applicants: entry rate

Applicant Status	POLAR3	2013	2014	2015	2016	2017
Placed	Quintile 1	15.5%	16.2%	16.1%	16.1%	16.3%
	Quintile 2	24.7%	26.1%	22.9%	26.9%	25.2%
	Quintile 3	32.2%	31.3%	30.6%	32.3%	30.5%
	Quintile 4	38.7%	38.3%	36.8%	38.4%	38.8%
	Quintile 5	50.1%	47.2%	46.5%	46.4%	46.8%

**P.12 Placed 18 year old applicants from Northern Ireland by POLAR3 quintile: 28 days after A level results day**

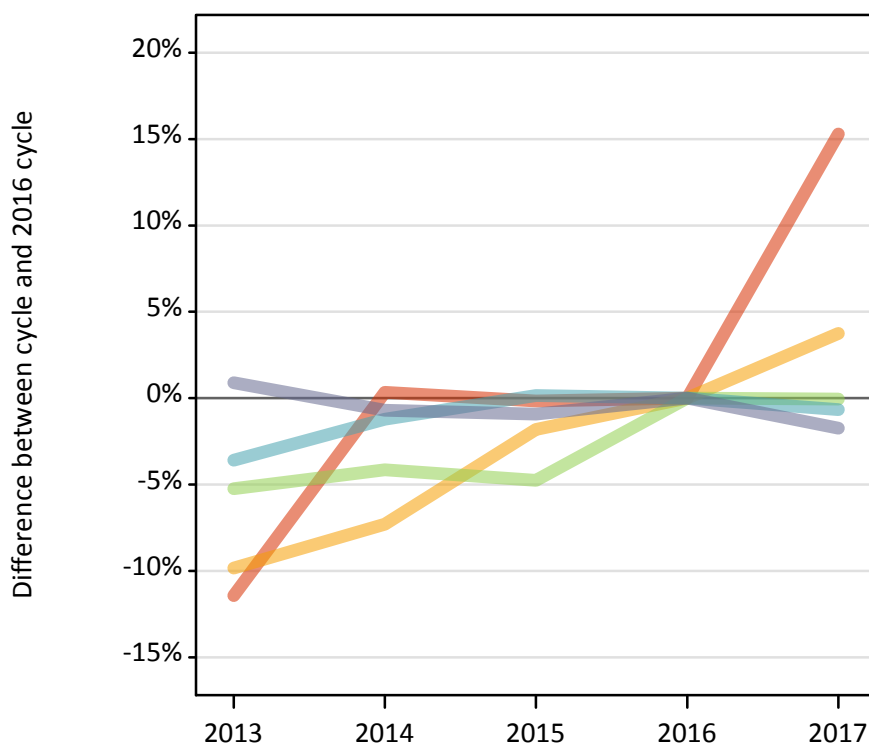
Placed 18 year old applicants: entry rate (indexed to 100 = Quintile 1)

Applicant Status	POLAR3	2013	2014	2015	2016	2017
Placed	Quintile 1	100	100	100	100	100
	Quintile 2	159	161	142	168	155
	Quintile 3	208	193	190	201	187
	Quintile 4	250	237	229	239	238
	Quintile 5	323	292	289	289	287

**P.13 Placed 18 year old applicants from Scotland by POLAR3 quintile: 28 days after A level results day**

Placed 18 year old applicants: change relative to 2016 cycle totals

- Quintile 1
- Quintile 2
- Quintile 3
- Quintile 4
- Quintile 5



**P.14 Placed 18 year old applicants from Scotland by POLAR3 quintile: 28 days after A level results day**

Applicant Status	POLAR3	2013	2014	2015	2016	2017
Placed	Quintile 1	530	600	590	600	690
	Quintile 2	1,350	1,390	1,470	1,500	1,550
	Quintile 3	2,170	2,190	2,180	2,290	2,290
	Quintile 4	3,300	3,380	3,430	3,430	3,400
	Quintile 5	6,830	6,720	6,700	6,770	6,650

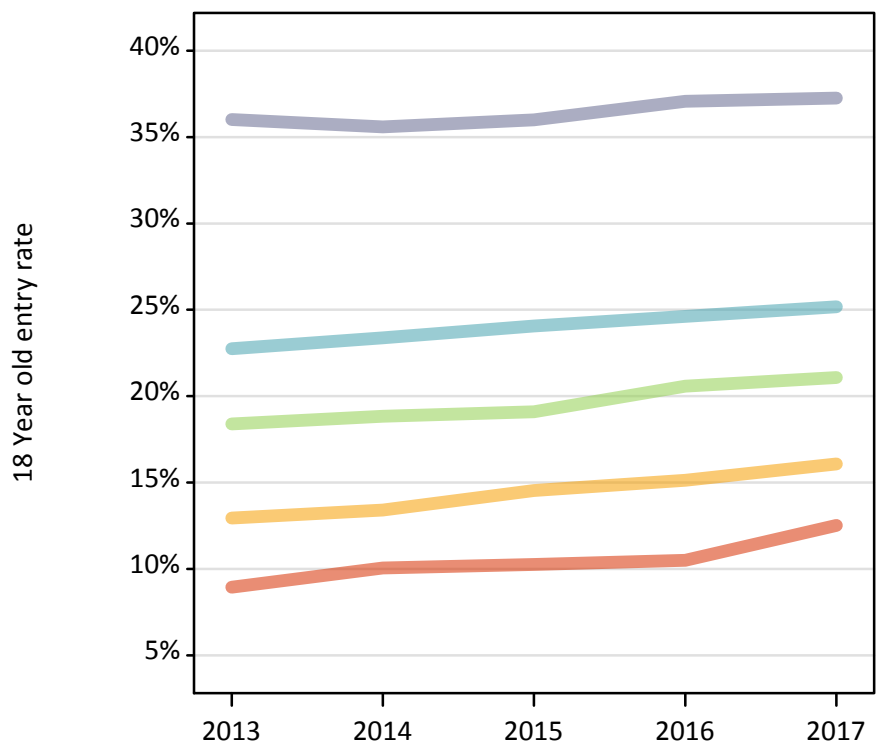
**P.15 Placed 18 year old applicants from Scotland by POLAR3 quintile: 28 days after A level results day**

Placed 18 year old applicants: change relative to 2016 cycle totals

Applicant Status	POLAR3	2013	2014	2015	2016	2017
Placed	Quintile 1	-11%	0%	-0%	0%	15%
	Quintile 2	-10%	-7%	-2%	0%	4%
	Quintile 3	-5%	-4%	-5%	0%	-0%
	Quintile 4	-4%	-1%	0%	0%	-1%
	Quintile 5	1%	-1%	-1%	0%	-2%

**P.16 Placed 18 year old applicants from Scotland by POLAR3 quintile: 28 days after A level results day**

Placed 18 year old applicants: entry rate



**P.17 Placed 18 year old applicants from Scotland by POLAR3 quintile: 28 days after A level results day**

Placed 18 year old applicants: entry rate

Applicant Status	POLAR3	2013	2014	2015	2016	2017
Placed	Quintile 1	8.9%	10.1%	10.3%	10.5%	12.5%
	Quintile 2	12.9%	13.4%	14.5%	15.1%	16.1%
	Quintile 3	18.4%	18.8%	19.1%	20.6%	21.1%
	Quintile 4	22.7%	23.4%	24.1%	24.6%	25.2%
	Quintile 5	36.0%	35.6%	36.0%	37.1%	37.3%

**P.18 Placed 18 year old applicants from Scotland by POLAR3 quintile: 28 days after A level results day**

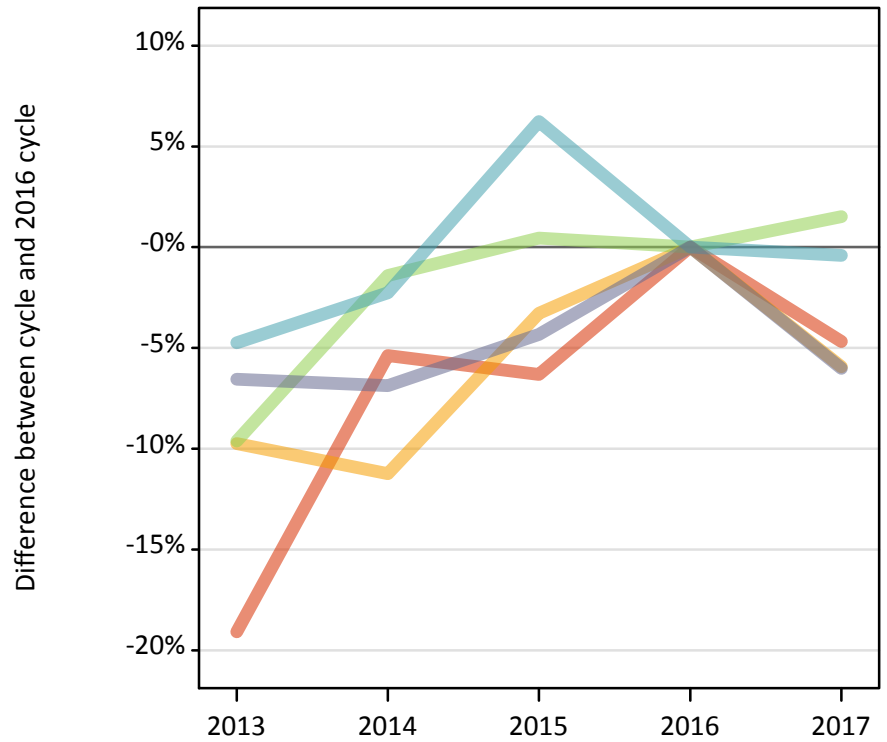
Placed 18 year old applicants: entry rate (indexed to 100 = Quintile 1)

Applicant Status	POLAR3	2013	2014	2015	2016	2017
Placed	Quintile 1	100	100	100	100	100
	Quintile 2	145	133	142	144	129
	Quintile 3	206	187	186	196	168
	Quintile 4	255	232	234	234	201
	Quintile 5	403	354	351	353	298

**P.19 Placed 18 year old applicants from Wales by POLAR3 quintile: 28 days after A level results day**

Placed 18 year old applicants: change relative to 2016 cycle totals

- Quintile 1
- Quintile 2
- Quintile 3
- Quintile 4
- Quintile 5



**P.20 Placed 18 year old applicants from Wales by POLAR3 quintile: 28 days after A level results day**

Applicant Status	POLAR3	2013	2014	2015	2016	2017
Placed	Quintile 1	1,280	1,500	1,480	1,580	1,510
	Quintile 2	2,010	1,980	2,150	2,230	2,090
	Quintile 3	1,610	1,750	1,790	1,780	1,810
	Quintile 4	2,150	2,210	2,400	2,260	2,250
	Quintile 5	2,660	2,650	2,720	2,840	2,670

**P.21 Placed 18 year old applicants from Wales by POLAR3 quintile: 28 days after A level results day**

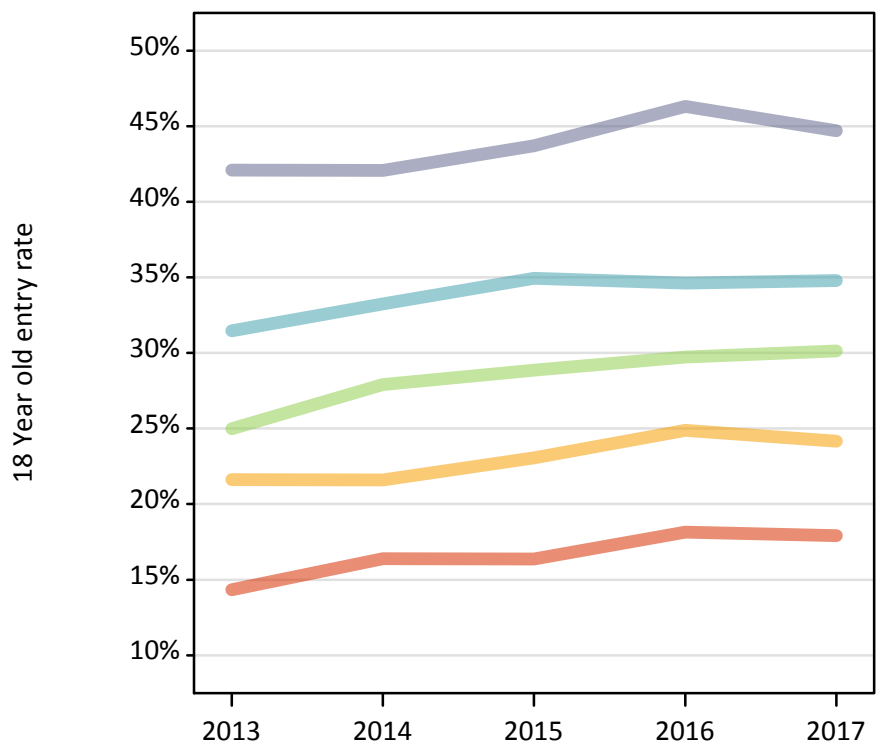
Placed 18 year old applicants: change relative to 2016 cycle totals

Applicant Status	POLAR3	2013	2014	2015	2016	2017
Placed	Quintile 1	-19%	-5%	-6%	0%	-5%
	Quintile 2	-10%	-11%	-3%	0%	-6%
	Quintile 3	-10%	-1%	0%	0%	2%
	Quintile 4	-5%	-2%	6%	0%	-0%
	Quintile 5	-7%	-7%	-4%	0%	-6%

**P.22 Placed 18 year old applicants from Wales by POLAR3 quintile: 28 days after A level results day**

Placed 18 year old applicants: entry rate

- Quintile 1
- Quintile 2
- Quintile 3
- Quintile 4
- Quintile 5



**P.23 Placed 18 year old applicants from Wales by POLAR3 quintile: 28 days after A level results day**

Placed 18 year old applicants: entry rate

Applicant Status	POLAR3	2013	2014	2015	2016	2017
Placed	Quintile 1	14.3%	16.4%	16.4%	18.2%	17.9%
	Quintile 2	21.6%	21.6%	23.1%	24.9%	24.2%
	Quintile 3	25.0%	27.9%	28.9%	29.7%	30.1%
	Quintile 4	31.5%	33.3%	34.9%	34.6%	34.8%
	Quintile 5	42.1%	42.1%	43.7%	46.3%	44.7%

**P.24 Placed 18 year old applicants from Wales by POLAR3 quintile: 28 days after A level results day**

Placed 18 year old applicants: entry rate (indexed to 100 = Quintile 1)

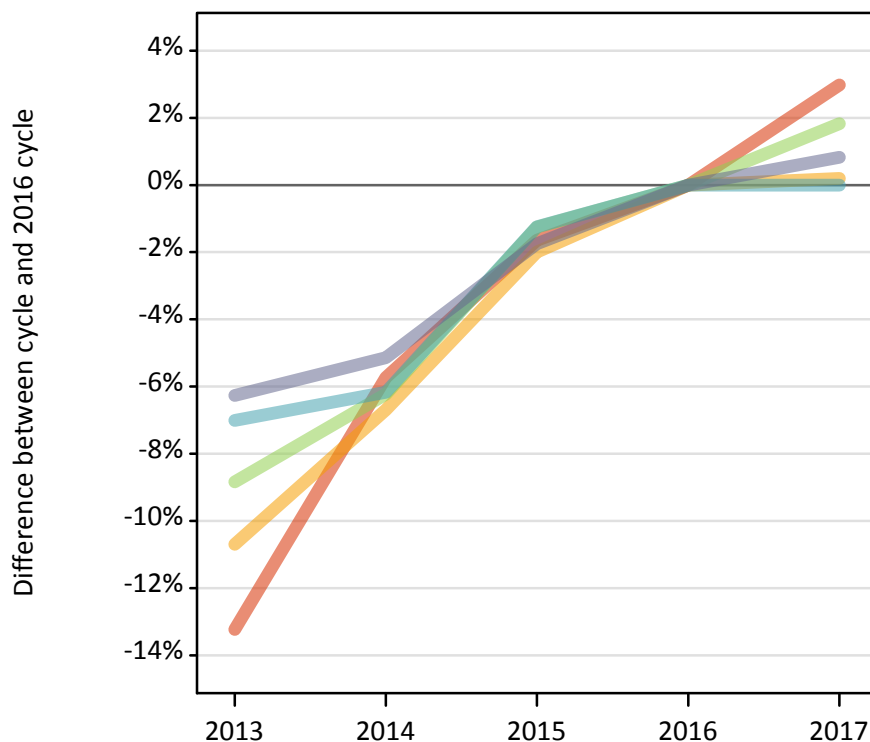
Applicant Status	POLAR3	2013	2014	2015	2016	2017
Placed	Quintile 1	100	100	100	100	100
	Quintile 2	151	132	141	137	135
	Quintile 3	174	170	176	164	168
	Quintile 4	219	203	214	191	194
	Quintile 5	294	257	267	255	249



**P.25 Placed 18 year old applicants from the UK by POLAR3 quintile: 28 days after A level results day**

Placed 18 year old applicants: change relative to 2016 cycle totals

- Quintile 1
- Quintile 2
- Quintile 3
- Quintile 4
- Quintile 5



**P.26 Placed 18 year old applicants from the UK by POLAR3 quintile: 28 days after A level results day**

Applicant Status	POLAR3	2013	2014	2015	2016	2017
Placed	Quintile 1	22,020	23,920	24,960	25,370	26,130
	Quintile 2	32,640	34,100	35,820	36,550	36,620
	Quintile 3	41,810	43,010	45,290	45,860	46,700
	Quintile 4	51,640	52,100	54,840	55,530	55,530
	Quintile 5	70,190	71,030	73,570	74,880	75,500

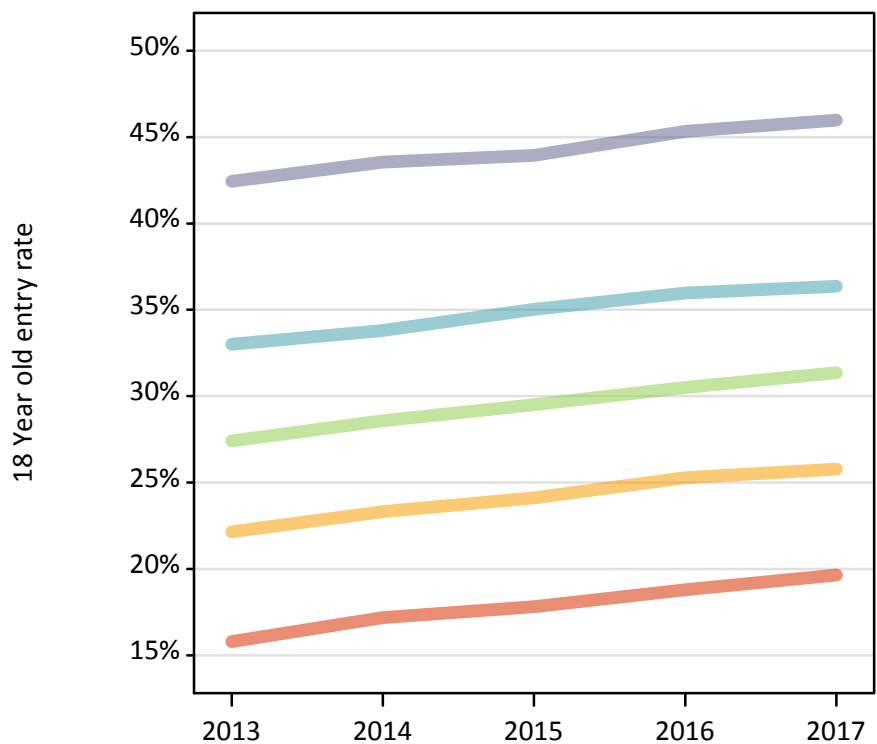
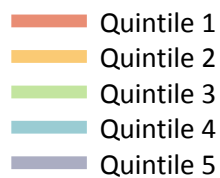
**P.27 Placed 18 year old applicants from the UK by POLAR3 quintile: 28 days after A level results day**

Placed 18 year old applicants: change relative to 2016 cycle totals

Applicant Status	POLAR3	2013	2014	2015	2016	2017
Placed	Quintile 1	-13%	-6%	-2%	0%	3%
	Quintile 2	-11%	-7%	-2%	0%	0%
	Quintile 3	-9%	-6%	-1%	0%	2%
	Quintile 4	-7%	-6%	-1%	0%	-0%
	Quintile 5	-6%	-5%	-2%	0%	1%

**P.28 Placed 18 year old applicants from the UK by POLAR3 quintile: 28 days after A level results day**

Placed 18 year old applicants: entry rate



**P.29 Placed 18 year old applicants from the UK by POLAR3 quintile: 28 days after A level results day**

Placed 18 year old applicants: entry rate

Applicant Status	POLAR3	2013	2014	2015	2016	2017
Placed	Quintile 1	15.8%	17.2%	17.8%	18.8%	19.6%
	Quintile 2	22.2%	23.3%	24.1%	25.3%	25.8%
	Quintile 3	27.4%	28.6%	29.5%	30.5%	31.4%
	Quintile 4	33.0%	33.8%	35.0%	36.0%	36.4%
	Quintile 5	42.4%	43.6%	43.9%	45.3%	46.0%

**P.30 Placed 18 year old applicants from the UK by POLAR3 quintile: 28 days after A level results day**

Placed 18 year old applicants: entry rate (indexed to 100 = Quintile 1)

Applicant Status	POLAR3	2013	2014	2015	2016	2017
Placed	Quintile 1	100	100	100	100	100
	Quintile 2	140	136	135	134	131
	Quintile 3	174	166	166	162	160
	Quintile 4	209	197	197	191	185
	Quintile 5	269	253	247	241	234