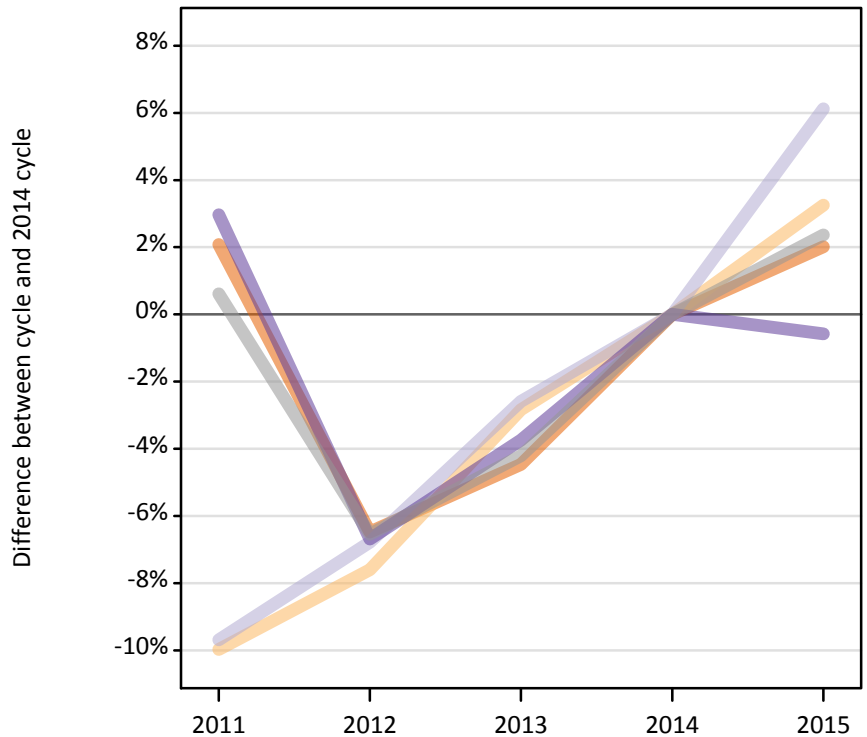
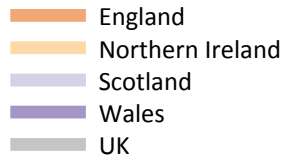


## Applications by country and type of provider at the 24 March deadline

### F.5.1 Applications by domicile and country of provider : All domiciles

Difference between cycle and 2014 cycle



### F.5.2 Applications by domicile and country of provider : All domiciles

Domicile of applicant and country of provider		2011	2012	2013	2014	2015
All domiciles	England	2,281,750	2,090,500	2,135,400	2,235,340	2,280,350
	Northern Ireland	55,880	57,350	60,310	62,070	64,090
	Scotland	249,270	257,300	268,890	276,030	292,930
	Wales	106,440	96,460	99,500	103,370	102,770
	UK	2,693,340	2,501,610	2,564,110	2,676,810	2,740,140

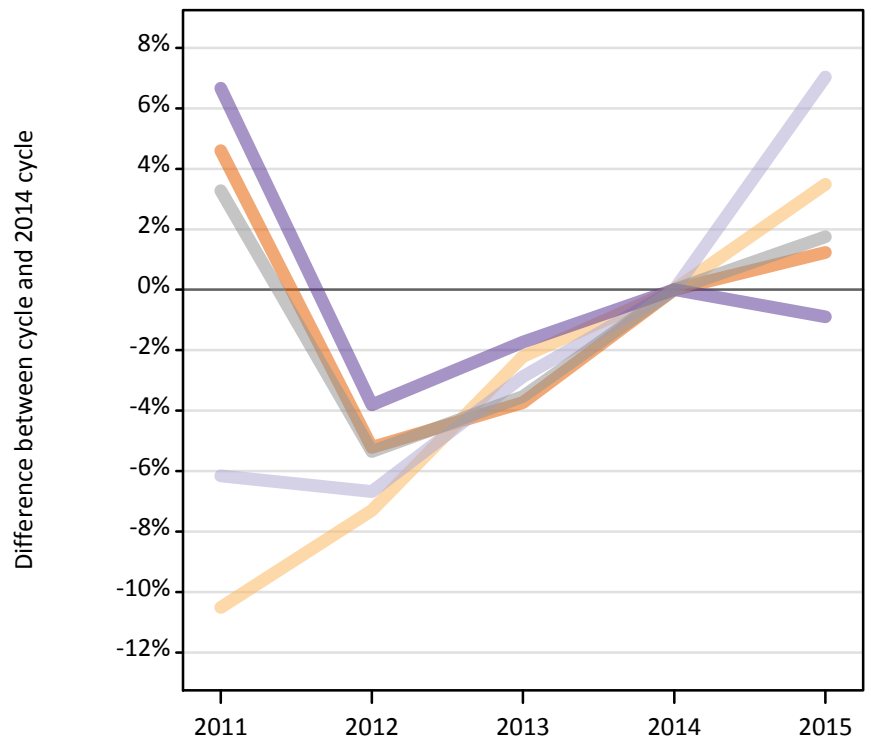
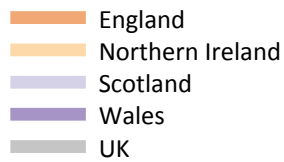
### F.5.3 Applications by domicile and country of provider : All domiciles

Difference between cycle and 2014 cycle

Domicile of applicant and country of provider		2011	2012	2013	2014	2015
All domiciles	England	2%	-6%	-4%	0%	2%
	Northern Ireland	-10%	-8%	-3%	0%	3%
	Scotland	-10%	-7%	-3%	0%	6%
	Wales	3%	-7%	-4%	0%	-1%
	UK	1%	-7%	-4%	0%	2%

### F.5.4 Applications by domicile and country of provider : UK

Difference between cycle and 2014 cycle



### F.5.5 Applications by domicile and country of provider : UK

Domicile of applicant and country of provider		2011	2012	2013	2014	2015
UK	England	1,960,500	1,776,420	1,804,270	1,874,210	1,897,230
	Northern Ireland	51,290	53,130	56,050	57,310	59,310
	Scotland	199,050	197,960	206,030	212,130	227,050
	Wales	96,500	87,020	88,900	90,470	89,660
	UK	2,307,330	2,114,520	2,155,250	2,234,120	2,273,260

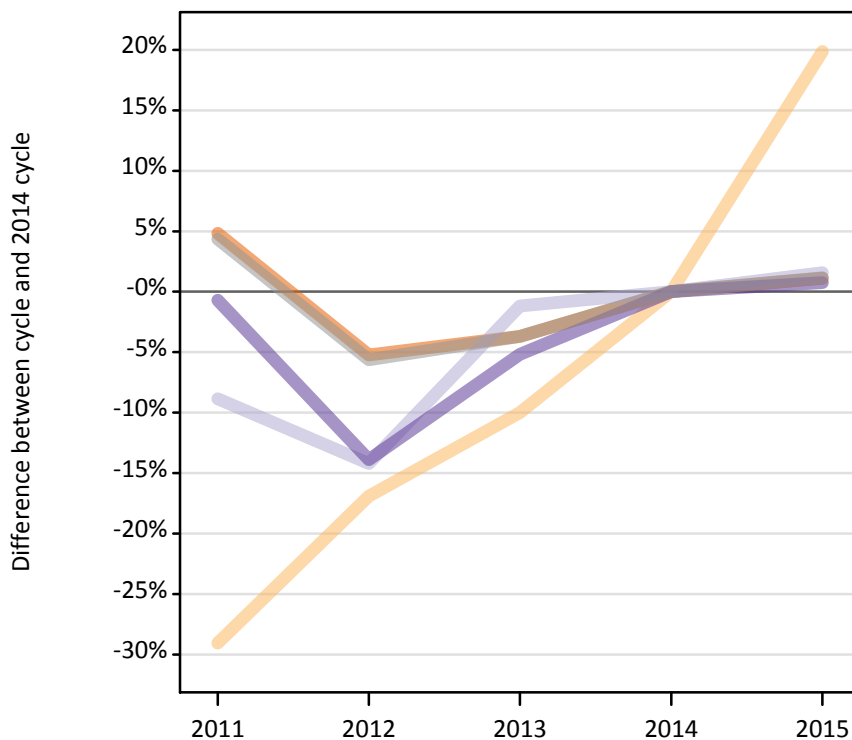
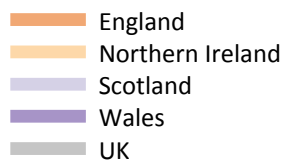
### F.5.6 Applications by domicile and country of provider : UK

Difference between cycle and 2014 cycle

Domicile of applicant and country of provider		2011	2012	2013	2014	2015
UK	England	5%	-5%	-4%	0%	1%
	Northern Ireland	-11%	-7%	-2%	0%	3%
	Scotland	-6%	-7%	-3%	0%	7%
	Wales	7%	-4%	-2%	0%	-1%
	UK	3%	-5%	-4%	0%	2%

### F.5.7 Applications by domicile and country of provider : England

Difference between cycle and 2014 cycle



### F.5.8 Applications by domicile and country of provider : England

Domicile of applicant and country of provider		2011	2012	2013	2014	2015
England	England	1,873,830	1,694,450	1,721,870	1,787,730	1,807,580
	Northern Ireland	1,890	2,220	2,400	2,670	3,200
	Scotland	32,930	30,990	35,700	36,130	36,690
	Wales	49,960	43,340	47,720	50,320	50,700
	UK	1,958,610	1,771,000	1,807,680	1,876,840	1,898,170

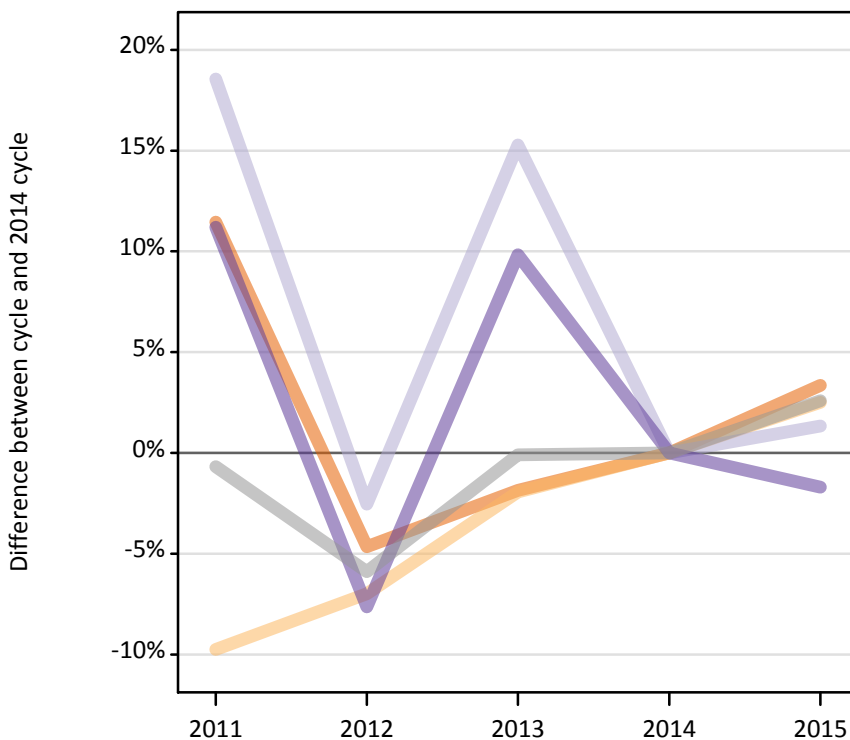
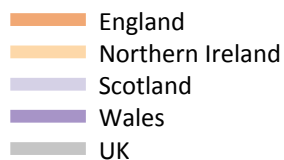
### F.5.9 Applications by domicile and country of provider : England

Difference between cycle and 2014 cycle

Domicile of applicant and country of provider		2011	2012	2013	2014	2015
England	England	5%	-5%	-4%	0%	1%
	Northern Ireland	-29%	-17%	-10%	0%	20%
	Scotland	-9%	-14%	-1%	0%	2%
	Wales	-1%	-14%	-5%	0%	1%
	UK	4%	-6%	-4%	0%	1%

### F.5.10 Applications by domicile and country of provider : Northern Ireland

Difference between cycle and 2014 cycle



### F.5.11 Applications by domicile and country of provider : Northern Ireland

Domicile of applicant and country of provider		2011	2012	2013	2014	2015
Northern Ireland	England	28,680	24,540	25,260	25,730	26,590
	Northern Ireland	49,110	50,620	53,370	54,420	55,780
	Scotland	10,300	8,470	10,010	8,690	8,800
	Wales	1,310	1,090	1,300	1,180	1,160
	UK	89,400	84,710	89,930	90,010	92,340

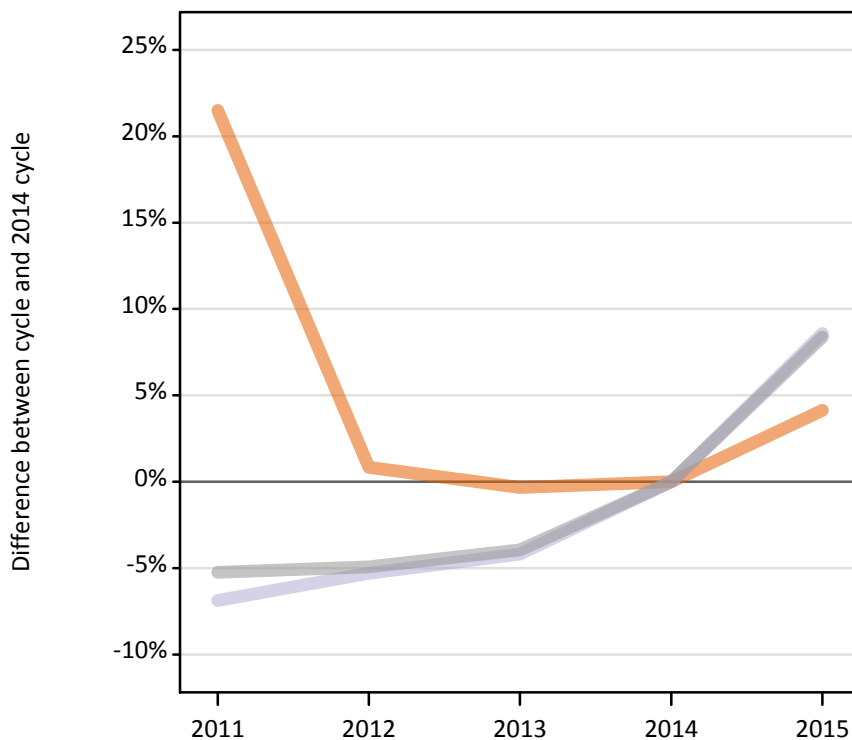
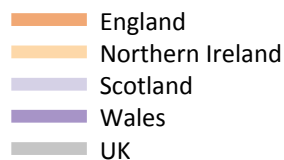
### F.5.12 Applications by domicile and country of provider : Northern Ireland

Difference between cycle and 2014 cycle

Domicile of applicant and country of provider		2011	2012	2013	2014	2015
Northern Ireland	England	11%	-5%	-2%	0%	3%
	Northern Ireland	-10%	-7%	-2%	0%	3%
	Scotland	19%	-3%	15%	0%	1%
	Wales	11%	-8%	10%	0%	-2%
	UK	-1%	-6%	-0%	0%	3%

### F.5.13 Applications by domicile and country of provider : Scotland

Difference between cycle and 2014 cycle



### F.5.14 Applications by domicile and country of provider : Scotland

Domicile of applicant and country of provider		2011	2012	2013	2014	2015
Scotland	England	11,290	9,370	9,260	9,290	9,680
	Northern Ireland	210	200	200	140	220
	Scotland	154,820	157,420	159,260	166,240	180,510
	Wales	370	240	220	230	230
	UK	166,690	167,240	168,940	175,900	190,630

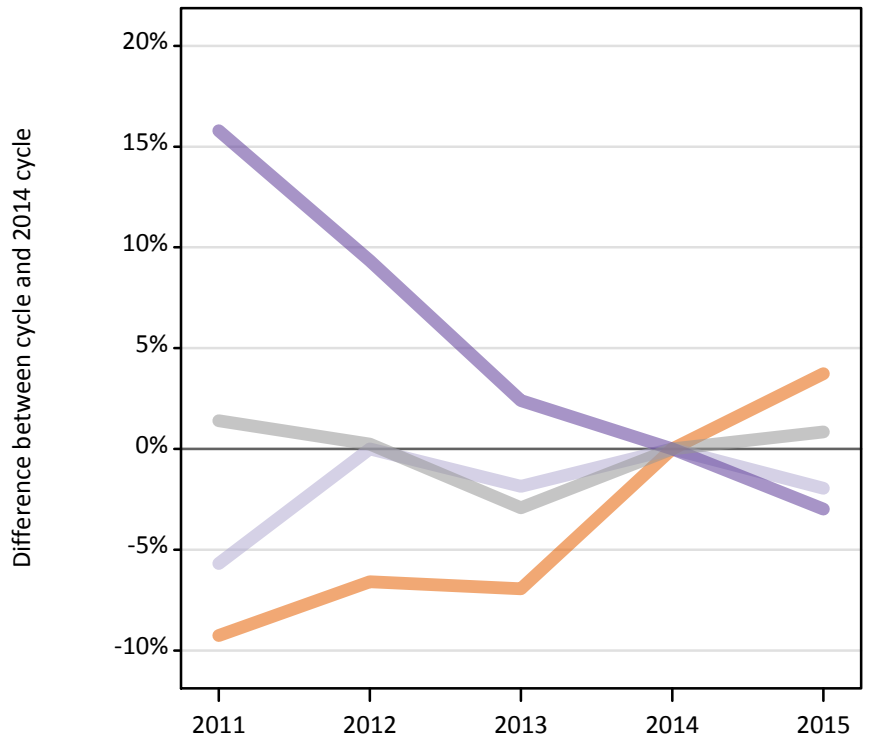
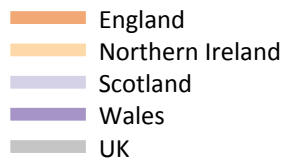
### F.5.15 Applications by domicile and country of provider : Scotland

Difference between cycle and 2014 cycle

Domicile of applicant and country of provider		2011	2012	2013	2014	2015
Scotland	England	22%	1%	-0%	0%	4%
	Northern Ireland	50%	44%	39%	0%	57%
	Scotland	-7%	-5%	-4%	0%	9%
	Wales	59%	5%	-3%	0%	-2%
	UK	-5%	-5%	-4%	0%	8%

### F.5.16 Applications by domicile and country of provider : Wales

Difference between cycle and 2014 cycle



### F.5.17 Applications by domicile and country of provider : Wales

Domicile of applicant and country of provider		2011	2012	2013	2014	2015
Wales	England	46,690	48,070	47,890	51,460	53,380
	Northern Ireland	80	90	90	90	110
	Scotland	1,010	1,070	1,050	1,070	1,050
	Wales	44,850	42,350	39,660	38,740	37,580
	UK	92,640	91,580	88,690	91,360	92,120

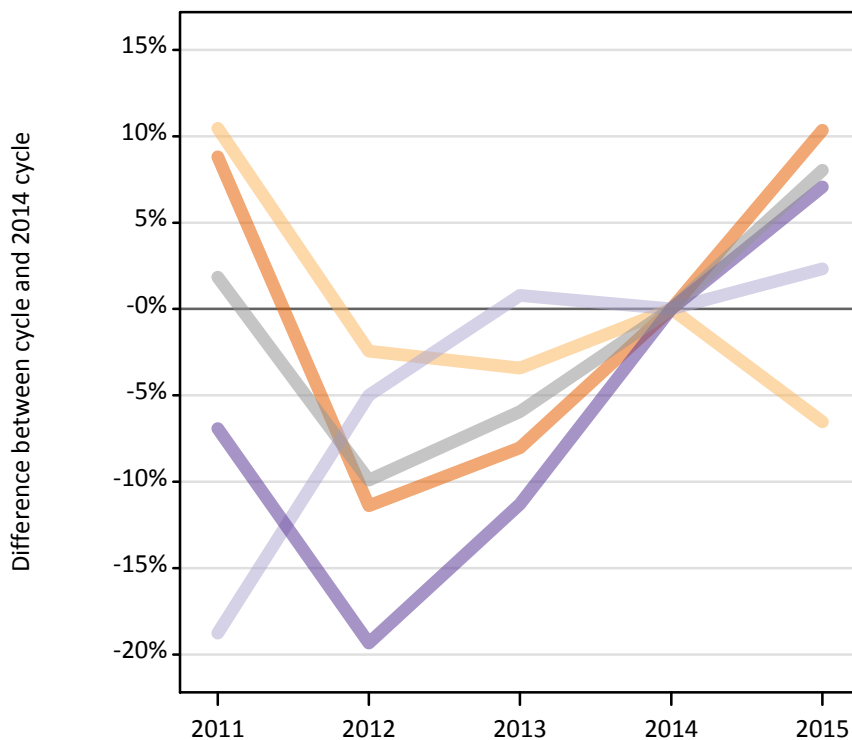
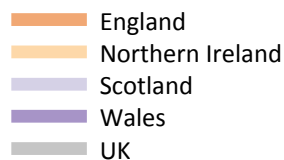
### F.5.18 Applications by domicile and country of provider : Wales

Difference between cycle and 2014 cycle

Domicile of applicant and country of provider		2011	2012	2013	2014	2015
Wales	England	-9%	-7%	-7%	0%	4%
	Northern Ireland	-16%	2%	-3%	0%	23%
	Scotland	-6%	0%	-2%	0%	-2%
	Wales	16%	9%	2%	0%	-3%
	UK	1%	0%	-3%	0%	1%

### F.5.19 Applications by domicile and country of provider : EU (excluding UK)

Difference between cycle and 2014 cycle



### F.5.20 Applications by domicile and country of provider : EU (excluding UK)

Domicile of applicant and country of provider		2011	2012	2013	2014	2015
EU (excluding UK)	England	144,710	117,830	122,290	132,980	146,740
	Northern Ireland	3,910	3,450	3,420	3,540	3,310
	Scotland	36,000	42,100	44,660	44,310	45,340
	Wales	4,730	4,100	4,510	5,080	5,440
	UK	189,340	167,480	174,870	185,910	200,830

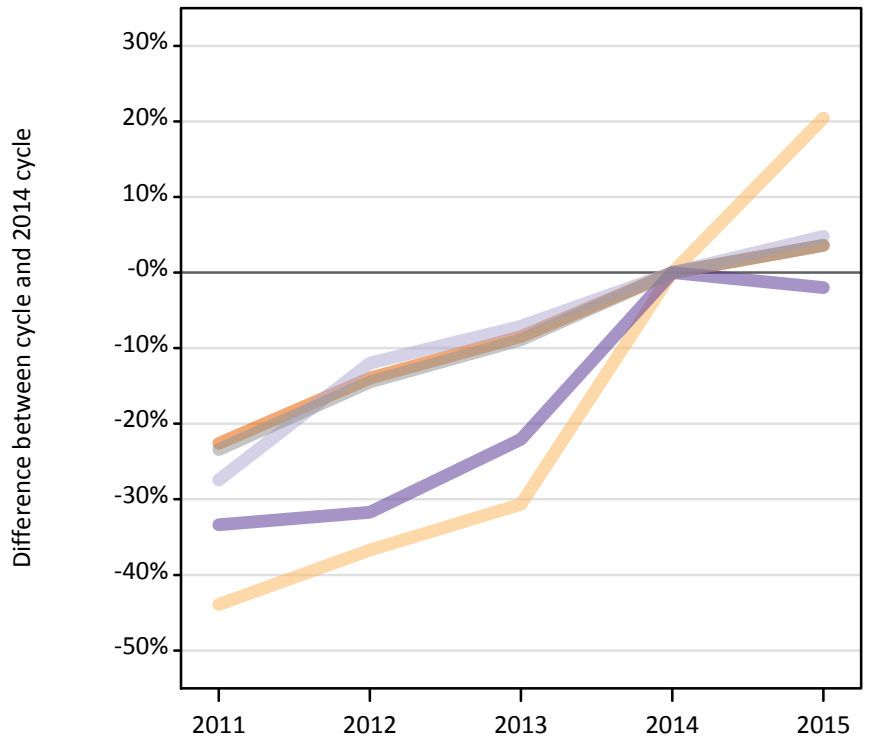
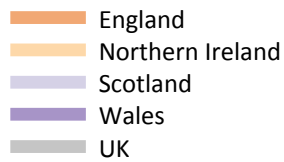
### F.5.21 Applications by domicile and country of provider : EU (excluding UK)

Difference between cycle and 2014 cycle

Domicile of applicant and country of provider		2011	2012	2013	2014	2015
EU (excluding UK)	England	9%	-11%	-8%	0%	10%
	Northern Ireland	10%	-2%	-3%	0%	-7%
	Scotland	-19%	-5%	1%	0%	2%
	Wales	-7%	-19%	-11%	0%	7%
	UK	2%	-10%	-6%	0%	8%

### F.5.22 Applications by domicile and country of provider : Not EU

Difference between cycle and 2014 cycle



### F.5.23 Applications by domicile and country of provider : Not EU

Domicile of applicant and country of provider		2011	2012	2013	2014	2015
Not EU	England	176,550	196,240	208,840	228,150	236,370
	Northern Ireland	680	770	850	1,220	1,470
	Scotland	14,220	17,240	18,200	19,600	20,540
	Wales	5,210	5,340	6,100	7,820	7,670
	UK	196,670	219,600	233,980	256,780	266,050

### F.5.24 Applications by domicile and country of provider : Not EU

Difference between cycle and 2014 cycle

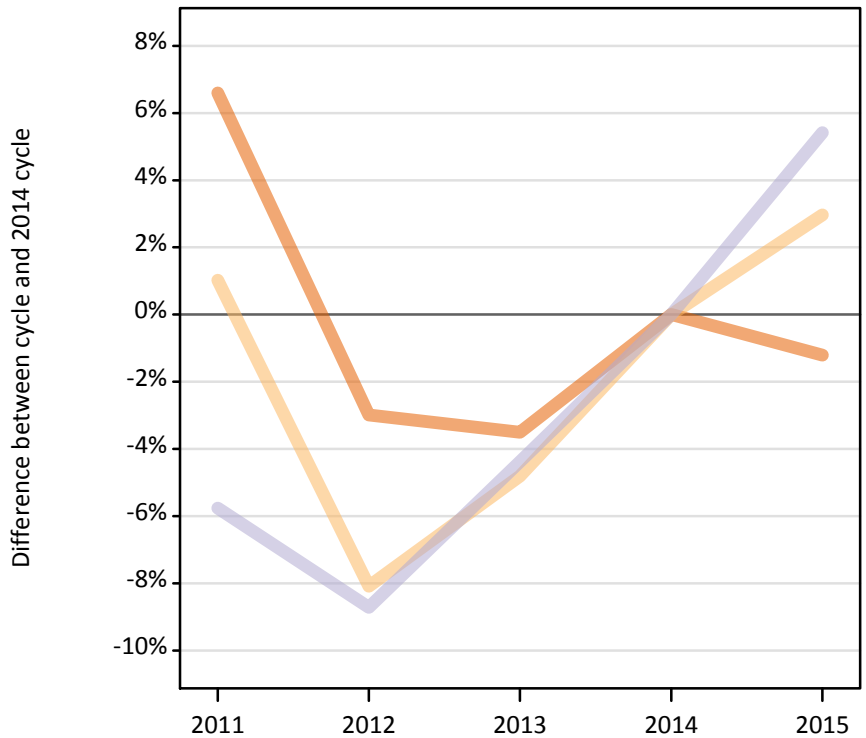
Domicile of applicant and country of provider		2011	2012	2013	2014	2015
Not EU	England	-23%	-14%	-8%	0%	4%
	Northern Ireland	-44%	-37%	-31%	0%	20%
	Scotland	-27%	-12%	-7%	0%	5%
	Wales	-33%	-32%	-22%	0%	-2%
	UK	-23%	-14%	-9%	0%	4%



### F.5.25 Applications by domicile and tariff group of provider : All domiciles

Difference between cycle and 2014 cycle

- 1. Lower tariff
- 2. Medium tariff
- 3. Higher tariff



### F.5.26 Applications by domicile and tariff group of provider : All domiciles

Domicile of applicant and tariff group of provider		2011	2012	2013	2014	2015
All domiciles	1. Lower tariff	983,290	894,900	890,180	922,450	911,290
	2. Medium tariff	845,620	769,380	796,780	837,070	861,860
	3. Higher tariff	864,420	837,330	877,150	917,290	966,980
	All	2,693,340	2,501,610	2,564,110	2,676,810	2,740,140

### F.5.27 Applications by domicile and tariff group of provider : All domiciles

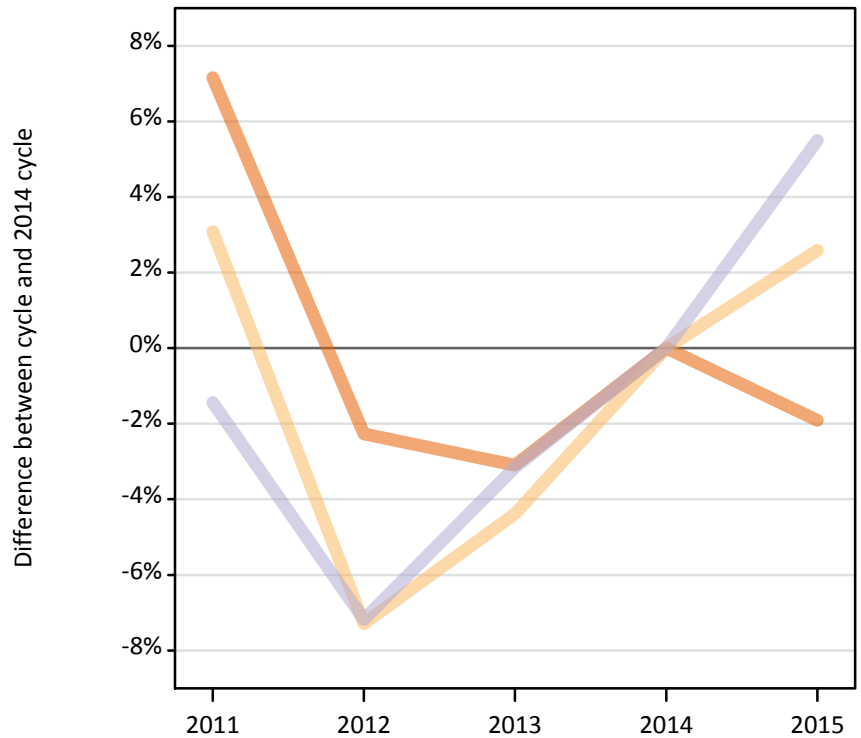
Difference between cycle and 2014 cycle

Domicile of applicant and tariff group of provider		2011	2012	2013	2014	2015
All domiciles	1. Lower tariff	7%	-3%	-3%	0%	-1%
	2. Medium tariff	1%	-8%	-5%	0%	3%
	3. Higher tariff	-6%	-9%	-4%	0%	5%
	All	1%	-7%	-4%	0%	2%

### F.5.28 Applications by domicile and tariff group of provider : UK

Difference between cycle and 2014 cycle

- 1. Lower tariff
- 2. Medium tariff
- 3. Higher tariff



### F.5.29 Applications by domicile and tariff group of provider : UK

Domicile of applicant and tariff group of provider		2011	2012	2013	2014	2015
UK	1. Lower tariff	908,010	828,170	821,100	847,370	831,180
	2. Medium tariff	740,750	666,170	687,060	718,580	737,160
	3. Higher tariff	658,570	620,180	647,090	668,160	704,920
	All	2,307,330	2,114,520	2,155,250	2,234,120	2,273,260

### F.5.30 Applications by domicile and tariff group of provider : UK

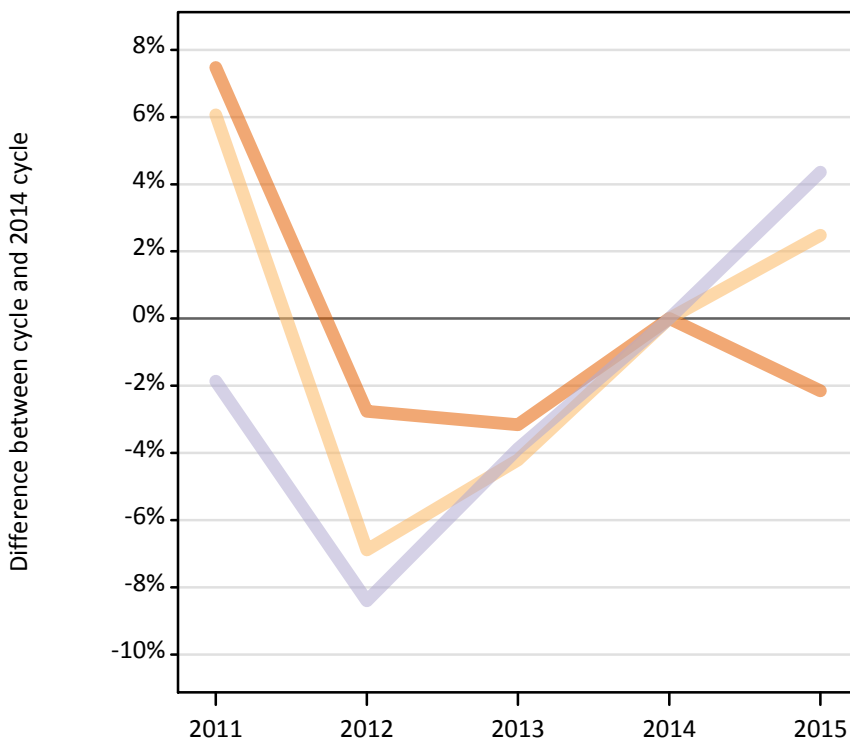
Difference between cycle and 2014 cycle

Domicile of applicant and tariff group of provider		2011	2012	2013	2014	2015
UK	1. Lower tariff	7%	-2%	-3%	0%	-2%
	2. Medium tariff	3%	-7%	-4%	0%	3%
	3. Higher tariff	-1%	-7%	-3%	0%	6%
	All	3%	-5%	-4%	0%	2%

### F.5.31 Applications by domicile and tariff group of provider : England

Difference between cycle and 2014 cycle

- 1. Lower tariff
- 2. Medium tariff
- 3. Higher tariff



### F.5.32 Applications by domicile and tariff group of provider : England

Domicile of applicant and tariff group of provider		2011	2012	2013	2014	2015
England	1. Lower tariff	822,270	743,940	740,890	765,050	748,630
	2. Medium tariff	605,570	531,640	546,910	570,950	585,130
	3. Higher tariff	530,780	495,420	519,890	540,840	564,410
	All	1,958,610	1,771,000	1,807,680	1,876,840	1,898,170

### F.5.33 Applications by domicile and tariff group of provider : England

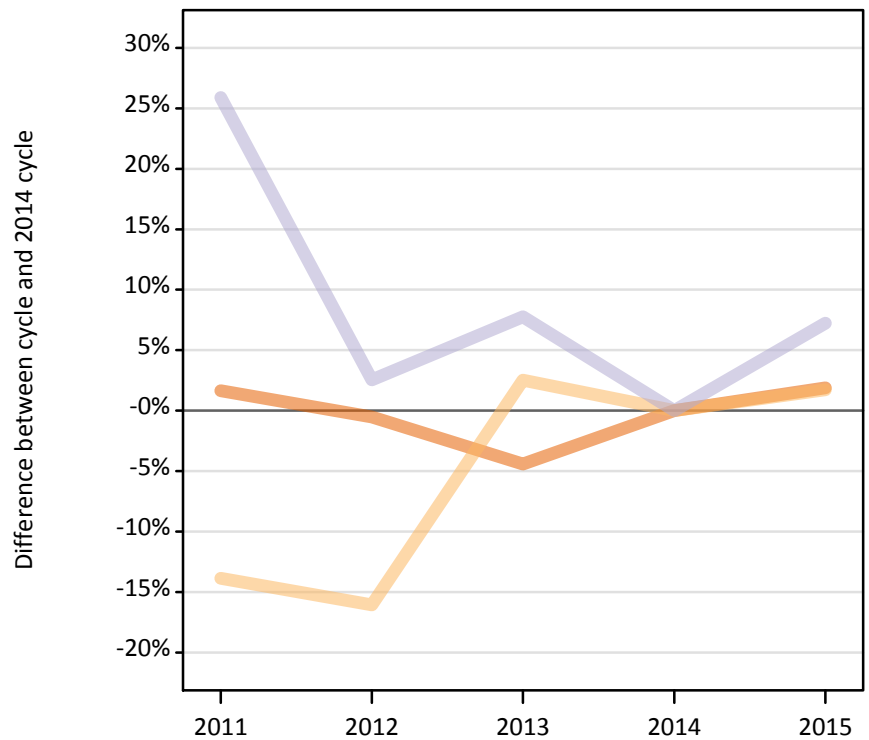
Difference between cycle and 2014 cycle

Domicile of applicant and tariff group of provider		2011	2012	2013	2014	2015
England	1. Lower tariff	7%	-3%	-3%	0%	-2%
	2. Medium tariff	6%	-7%	-4%	0%	2%
	3. Higher tariff	-2%	-8%	-4%	0%	4%
	All	4%	-6%	-4%	0%	1%

### F.5.34 Applications by domicile and tariff group of provider : Northern Ireland

Difference between cycle and 2014 cycle

- 1. Lower tariff
- 2. Medium tariff
- 3. Higher tariff



### F.5.35 Applications by domicile and tariff group of provider : Northern Ireland

Domicile of applicant and tariff group of provider		2011	2012	2013	2014	2015
Northern Ireland	1. Lower tariff	44,220	43,270	41,570	43,500	44,310
	2. Medium tariff	28,980	28,240	34,490	33,650	34,230
	3. Higher tariff	16,200	13,200	13,870	12,870	13,800
	All	89,400	84,710	89,930	90,010	92,340

### F.5.36 Applications by domicile and tariff group of provider : Northern Ireland

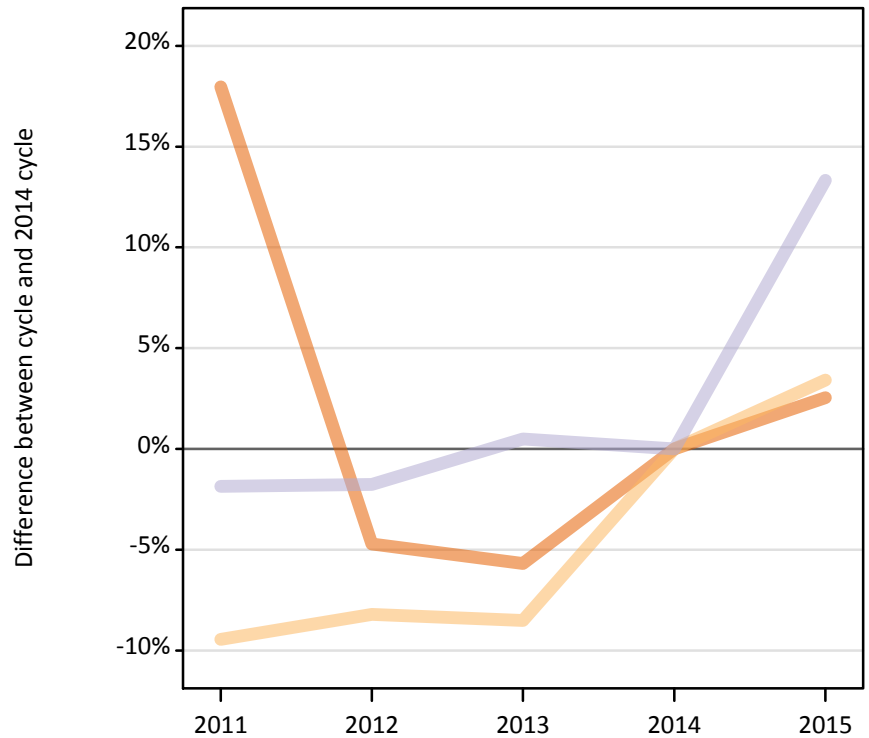
Difference between cycle and 2014 cycle

Domicile of applicant and tariff group of provider		2011	2012	2013	2014	2015
Northern Ireland	1. Lower tariff	2%	-1%	-4%	0%	2%
	2. Medium tariff	-14%	-16%	3%	0%	2%
	3. Higher tariff	26%	3%	8%	0%	7%
	All	-1%	-6%	-0%	0%	3%

### F.5.37 Applications by domicile and tariff group of provider : Scotland

Difference between cycle and 2014 cycle

- 1. Lower tariff
- 2. Medium tariff
- 3. Higher tariff



### F.5.38 Applications by domicile and tariff group of provider : Scotland

Domicile of applicant and tariff group of provider		2011	2012	2013	2014	2015
Scotland	1. Lower tariff	3,050	2,470	2,440	2,590	2,660
	2. Medium tariff	77,140	78,190	77,930	85,180	88,100
	3. Higher tariff	86,490	86,580	88,570	88,130	99,880
	All	166,690	167,240	168,940	175,900	190,630

### F.5.39 Applications by domicile and tariff group of provider : Scotland

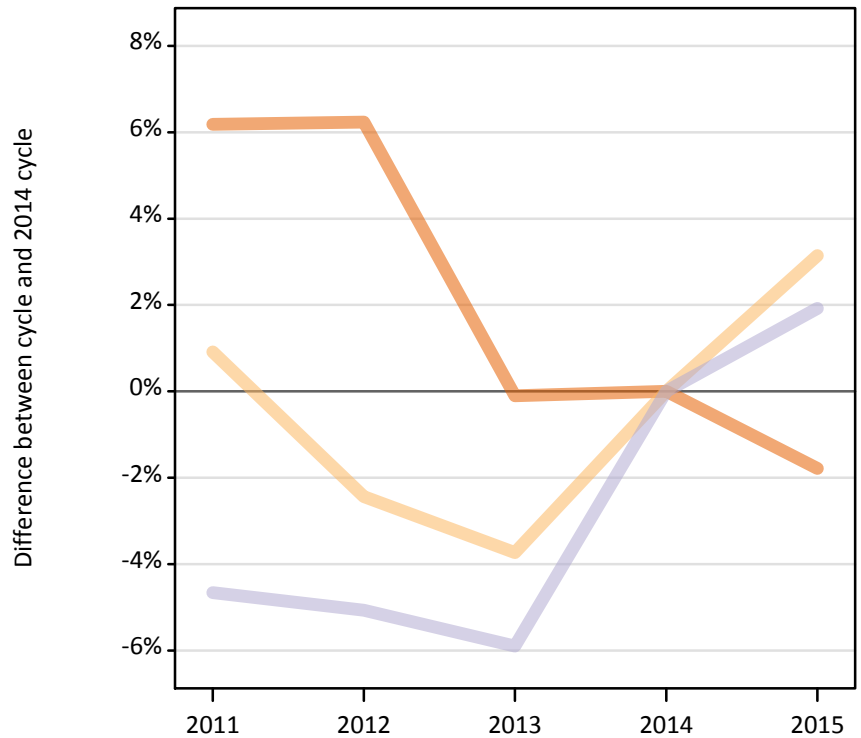
Difference between cycle and 2014 cycle

Domicile of applicant and tariff group of provider		2011	2012	2013	2014	2015
Scotland	1. Lower tariff	18%	-5%	-6%	0%	3%
	2. Medium tariff	-9%	-8%	-9%	0%	3%
	3. Higher tariff	-2%	-2%	1%	0%	13%
	All	-5%	-5%	-4%	0%	8%

### F.5.40 Applications by domicile and tariff group of provider : Wales

Difference between cycle and 2014 cycle

- 1. Lower tariff
- 2. Medium tariff
- 3. Higher tariff



### F.5.41 Applications by domicile and tariff group of provider : Wales

Domicile of applicant and tariff group of provider		2011	2012	2013	2014	2015
Wales	1. Lower tariff	38,480	38,500	36,200	36,240	35,590
	2. Medium tariff	29,060	28,100	27,720	28,800	29,710
	3. Higher tariff	25,100	24,990	24,770	26,320	26,830
	All	92,640	91,580	88,690	91,360	92,120

### F.5.42 Applications by domicile and tariff group of provider : Wales

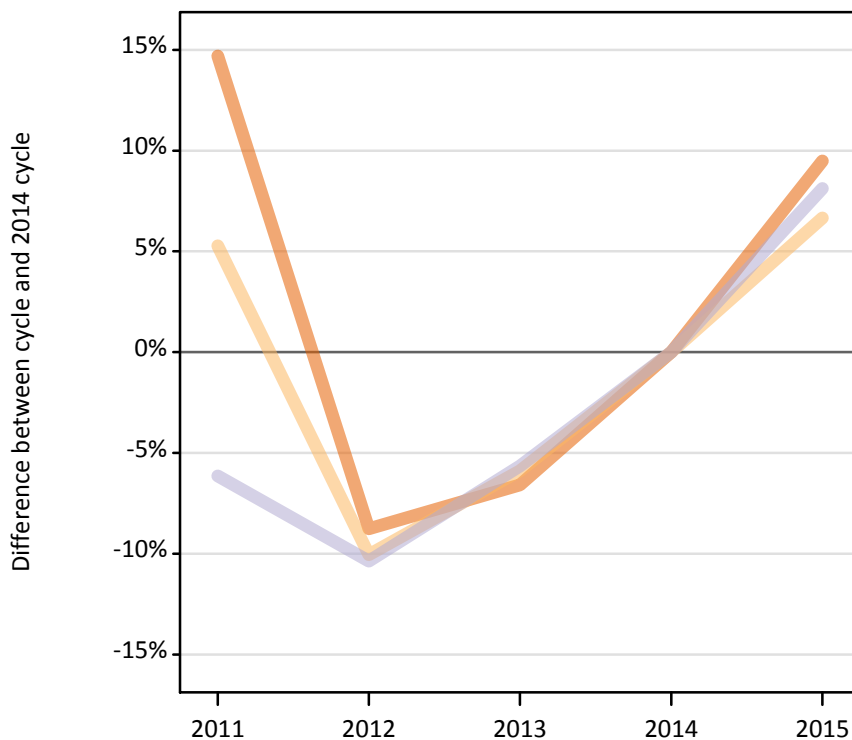
Difference between cycle and 2014 cycle

Domicile of applicant and tariff group of provider		2011	2012	2013	2014	2015
Wales	1. Lower tariff	6%	6%	-0%	0%	-2%
	2. Medium tariff	1%	-2%	-4%	0%	3%
	3. Higher tariff	-5%	-5%	-6%	0%	2%
	All	1%	0%	-3%	0%	1%

### F.5.43 Applications by domicile and tariff group of provider : EU (excluding UK)

Difference between cycle and 2014 cycle

- 1. Lower tariff
- 2. Medium tariff
- 3. Higher tariff



### F.5.44 Applications by domicile and tariff group of provider : EU (excluding UK)

Domicile of applicant and tariff group of provider		2011	2012	2013	2014	2015
EU (excluding UK)	1. Lower tariff	49,010	38,990	39,920	42,730	46,780
	2. Medium tariff	54,840	46,860	49,030	52,100	55,560
	3. Higher tariff	85,480	81,630	85,930	91,080	98,480
	All	189,340	167,480	174,870	185,910	200,830

### F.5.45 Applications by domicile and tariff group of provider : EU (excluding UK)

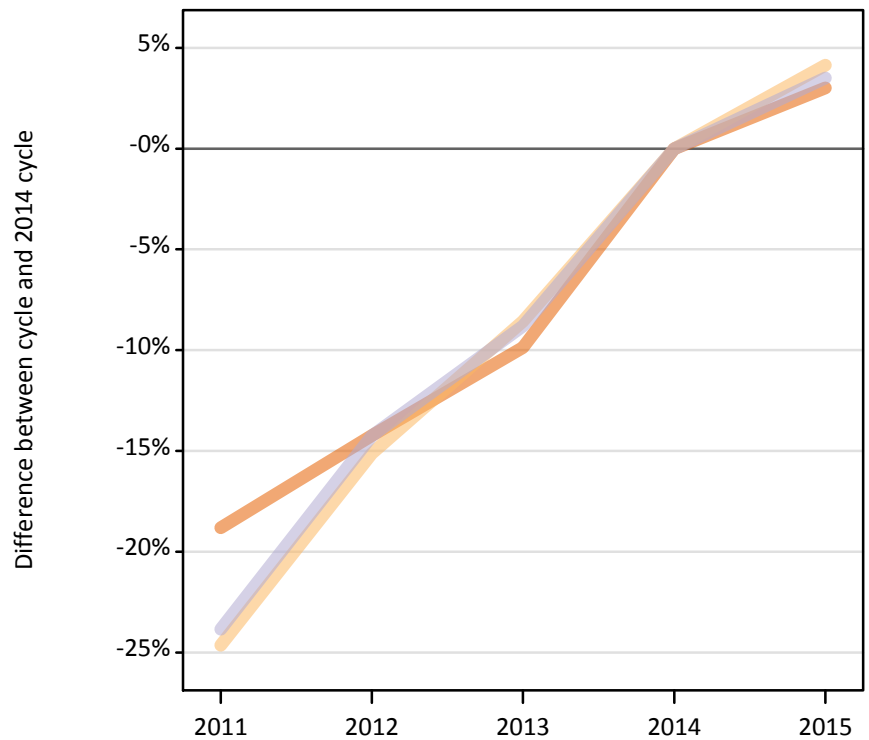
Difference between cycle and 2014 cycle

Domicile of applicant and tariff group of provider		2011	2012	2013	2014	2015
EU (excluding UK)	1. Lower tariff	15%	-9%	-7%	0%	9%
	2. Medium tariff	5%	-10%	-6%	0%	7%
	3. Higher tariff	-6%	-10%	-6%	0%	8%
	All	2%	-10%	-6%	0%	8%

### F.5.46 Applications by domicile and tariff group of provider : Not EU

Difference between cycle and 2014 cycle

- 1. Lower tariff
- 2. Medium tariff
- 3. Higher tariff



### F.5.47 Applications by domicile and tariff group of provider : Not EU

Domicile of applicant and tariff group of provider		2011	2012	2013	2014	2015
Not EU	1. Lower tariff	26,270	27,740	29,160	32,350	33,320
	2. Medium tariff	50,030	56,350	60,700	66,390	69,140
	3. Higher tariff	120,370	135,510	144,130	158,050	163,590
	All	196,670	219,600	233,980	256,780	266,050

### F.5.48 Applications by domicile and tariff group of provider : Not EU

Difference between cycle and 2014 cycle

Domicile of applicant and tariff group of provider		2011	2012	2013	2014	2015
Not EU	1. Lower tariff	-19%	-14%	-10%	0%	3%
	2. Medium tariff	-25%	-15%	-9%	0%	4%
	3. Higher tariff	-24%	-14%	-9%	0%	4%
	All	-23%	-14%	-9%	0%	4%



## F.5.49 Technical notes and definitions

Applicants have been able to submit applications for all 2015 courses since early September.

People who submit their applications to UCAS by the January deadline are considered 'on time' applicants for the large majority of courses offered through UCAS. Some art and design courses have a later deadline of 24 March. Almost all main scheme applications have been received by the 24 March deadline.

In 2015, a set of courses relating to teacher training that historically would only have been available through UCAS Teacher Training, and therefore not previously counted in the scope of this statistical release, were brought into the undergraduate UCAS scheme. These additional courses are all offered by providers based in Scotland and are in the JACS3 detailed subject reporting grouping of 'X1 - Training Teachers'.

The large majority of applications to the additional courses are from applicants living in Scotland and the increase indicated in Scottish domiciled applicants during the 2015 cycle is substantially a result of these changes.

To help comparisons through time, additional tables are available on the UCAS website that exclude any applications made by applicants to subject group 'X1' at Scottish providers. These tables provide a better 'like for like' comparison particularly when considering Scottish domiciled applicants and Scottish providers.

Counts of the number of applicants reported have been rounded to the nearest 10 applicants, this may result in instances where totals do not equal the sum of the components. Proportional changes have been rounded to the nearest whole percentage point.

### Age

This statistical release uses country-specific age definitions which align with the cut off points for school/college cohorts within the different administrations of the UK. For England and Wales ages are defined on the 31 August, for Northern Ireland on the 1 July and for Scotland on the 28 February the following year. Defining ages in this way matches the assignment of children to school cohorts. For applicants outside of the UK the cohort cut off for England and Wales has been used.

### Applicant

A person who has made an application in the UCAS system during the cycle reported, this includes those who submit applications for deferred entry. RPAs are excluded.

### Application

An application to a course at a provider made by an applicant in the UCAS main scheme. Applicants may make up to five main scheme applications.

### Country of provider

An applicant may be counted once for each provider country they have applied to in the main scheme. If an applicant has applied to providers in multiple countries then the applicant is counted once within each country of provider applied to.

This statistical release excludes a small number of applications to a provider based in the EU.

### Domicile

Declared area of permanent residence. The Channel Islands and the Isle of Man have been assigned as 'Not EU'.

### First time applicant

An applicant that did not apply to the UCAS scheme in the previous cycle.

### Main scheme

The main UCAS application scheme through which up to five providers/courses can be applied to. This opens in September and closes to new applications on 30 June the following year.

### Reapplicant

An applicant that applied to the UCAS scheme in the previous cycle.

## **F.5.50 Technical notes and definitions: continued**

### **Subject group**

The JACS3 classification used to classify courses into subject groups.

### **Tariff group of provider**

Providers are grouped as higher, medium or lower tariff based on their average levels of attainment of their accepted applicants (summarised through UCAS Tariff points) in recent cycles. Each group of providers accounted for around a third of all UK 18 year old acceptances in recent cycles.