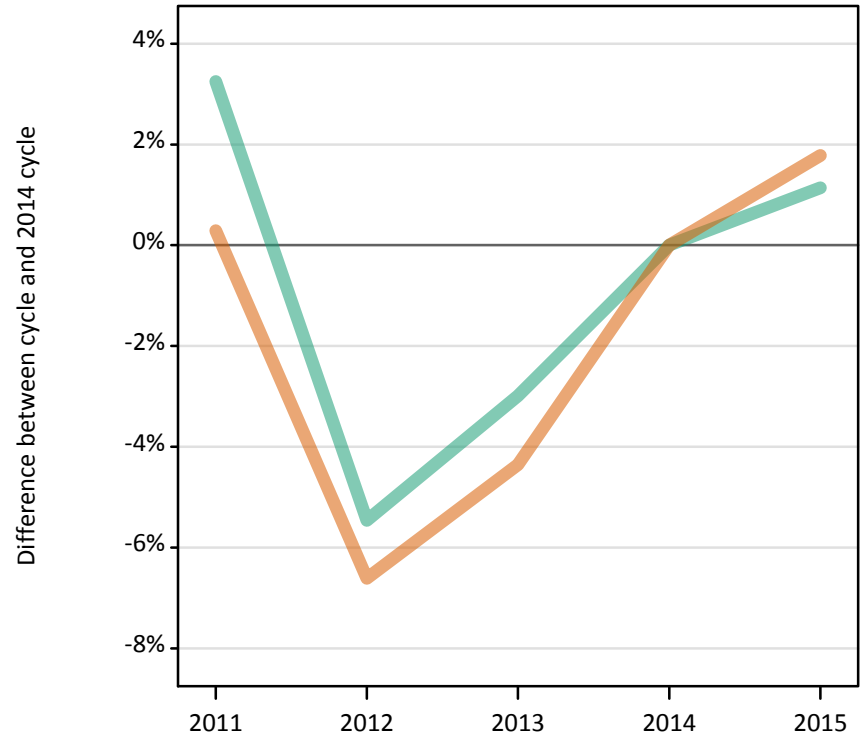


## Applicants by sex and age at the 24 March deadline (No Scot. X1)

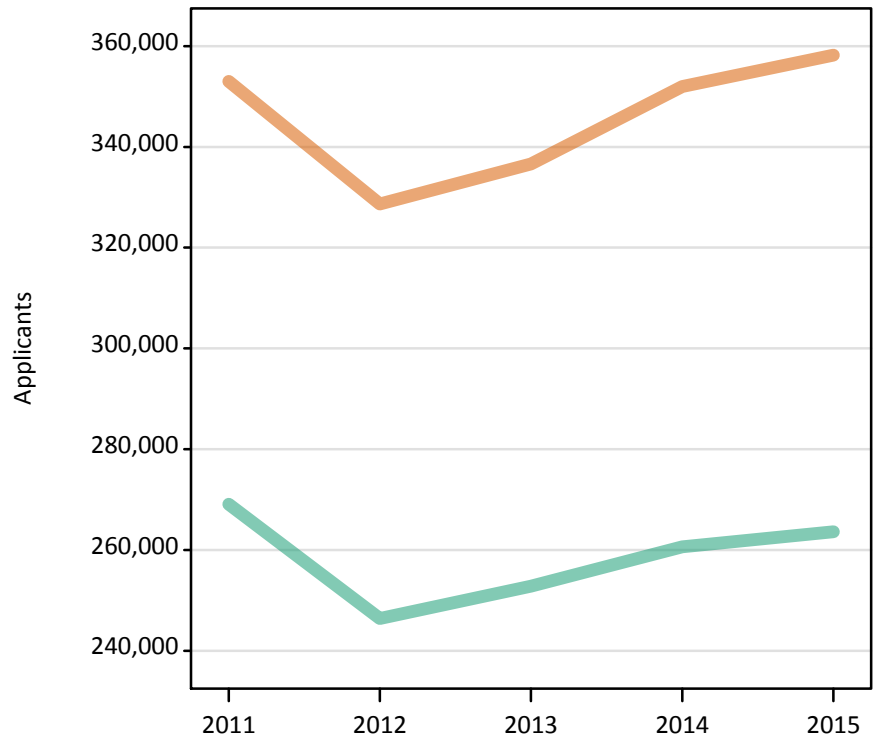
**FX.2.1 Applicants by sex : All domiciles**  
Difference between cycle and 2014 cycle

Men  
Women



**FX.2.2 Applicants by sex : All domiciles**

Men  
Women



### FX.2.3 Applicants by age and sex : All domiciles

Age group and sex of applicant		2011	2012	2013	2014	2015
Under 18	Women	4,780	4,850	5,110	5,850	5,990
	Men	3,420	3,630	3,960	4,280	4,600
18	Women	162,890	159,560	161,920	167,290	176,630
	Men	129,850	125,060	127,140	131,370	135,260
19	Women	69,680	60,100	65,480	68,340	69,290
	Men	58,950	50,210	54,860	55,980	57,010
20-24	Women	66,510	60,060	61,040	64,770	62,210
	Men	53,320	46,920	47,110	48,440	46,900
25-29	Women	19,840	17,830	17,980	18,930	18,440
	Men	10,930	9,380	9,410	9,600	9,170
30-34	Women	11,360	10,430	10,230	10,580	10,130
	Men	5,410	4,650	4,350	4,440	4,150
35 and over	Women	17,940	15,850	14,880	16,210	15,540
	Men	7,240	6,550	6,000	6,520	6,510
All ages	Women	352,990	328,690	336,640	351,970	358,230
	Men	269,100	246,400	252,830	260,630	263,590

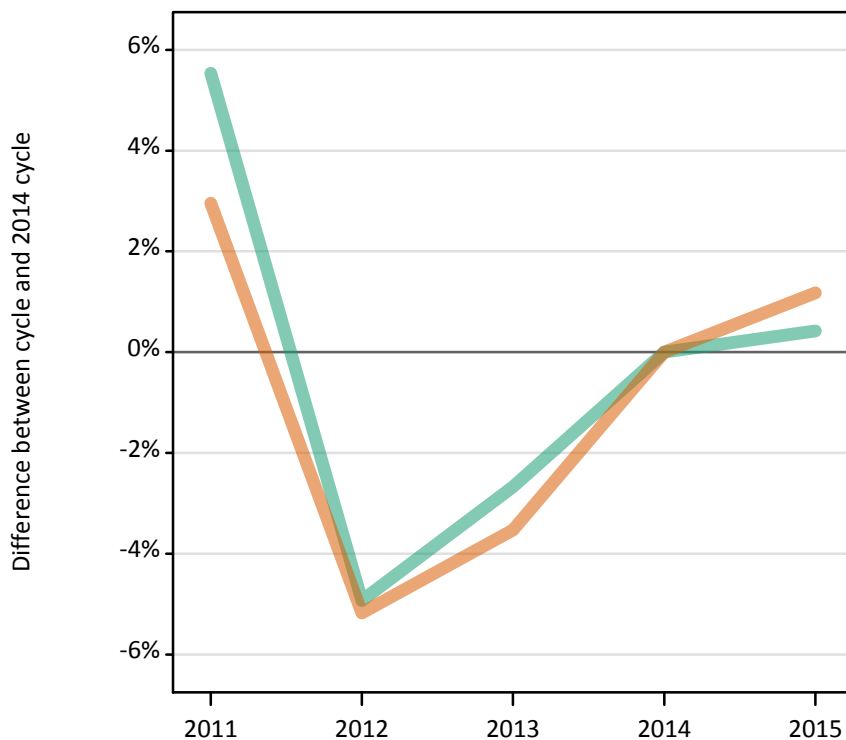
### FX.2.4 Applicants by age and sex : All domiciles

Difference between cycle and 2014 cycle

Age group and sex of applicant		2011	2012	2013	2014	2015
Under 18	Women	-18%	-17%	-13%	0%	2%
	Men	-20%	-15%	-8%	0%	7%
18	Women	-3%	-5%	-3%	0%	6%
	Men	-1%	-5%	-3%	0%	3%
19	Women	2%	-12%	-4%	0%	1%
	Men	5%	-10%	-2%	0%	2%
20-24	Women	3%	-7%	-6%	0%	-4%
	Men	10%	-3%	-3%	0%	-3%
25-29	Women	5%	-6%	-5%	0%	-3%
	Men	14%	-2%	-2%	0%	-4%
30-34	Women	7%	-1%	-3%	0%	-4%
	Men	22%	5%	-2%	0%	-7%
35 and over	Women	11%	-2%	-8%	0%	-4%
	Men	11%	0%	-8%	0%	-0%
All ages	Women	0%	-7%	-4%	0%	2%
	Men	3%	-5%	-3%	0%	1%

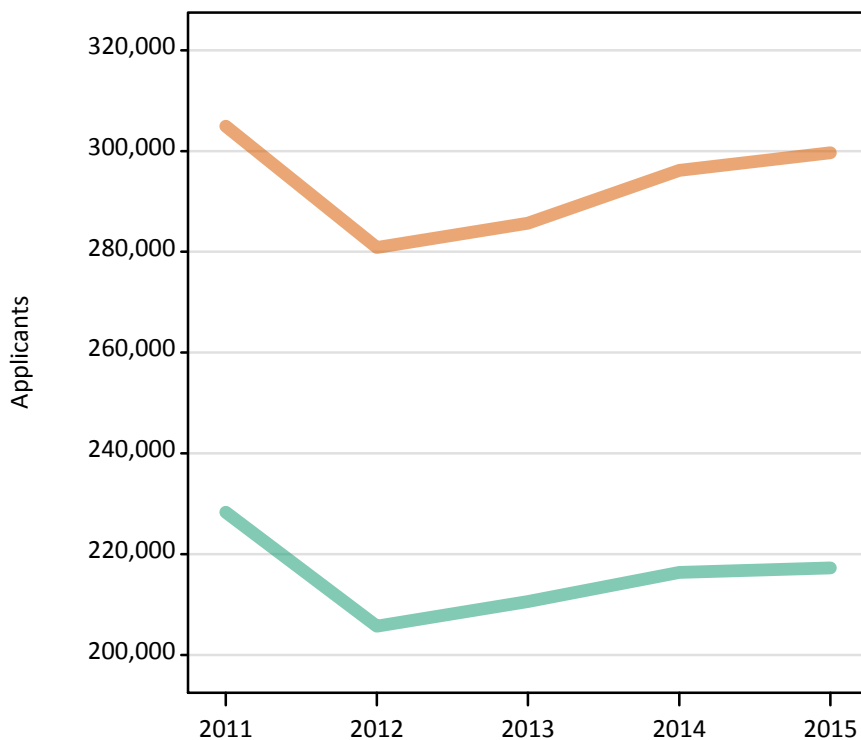
**FX.2.5 Applicants by sex : UK**  
Difference between cycle and 2014 cycle

Men  
Women



**FX.2.6 Applicants by sex : UK**

Men  
Women



### FX.2.7 Applicants by age and sex : UK

Age group and sex of applicant		2011	2012	2013	2014	2015
Under 18	Women	1,260	1,000	890	940	980
	Men	850	730	680	650	720
18	Women	147,050	143,010	143,590	147,300	154,750
	Men	117,830	112,030	113,150	116,210	118,590
19	Women	56,000	46,500	51,190	52,620	52,970
	Men	47,540	39,180	43,480	44,170	44,630
20-24	Women	53,900	48,330	48,990	51,680	49,080
	Men	41,140	35,470	35,660	36,790	35,510
25-29	Women	18,200	16,460	16,610	17,530	16,930
	Men	9,190	7,900	8,010	8,290	7,830
30-34	Women	10,880	10,010	9,850	10,200	9,740
	Men	4,870	4,180	3,910	4,020	3,750
35 and over	Women	17,620	15,530	14,610	15,900	15,190
	Men	6,900	6,200	5,680	6,220	6,240
All ages	Women	304,910	280,840	285,710	296,160	299,640
	Men	228,330	205,690	210,570	216,360	217,270

### FX.2.8 Applicants by age and sex : UK

Difference between cycle and 2014 cycle

Age group and sex of applicant		2011	2012	2013	2014	2015
Under 18	Women	34%	7%	-5%	0%	4%
	Men	30%	11%	4%	0%	10%
18	Women	-0%	-3%	-3%	0%	5%
	Men	1%	-4%	-3%	0%	2%
19	Women	6%	-12%	-3%	0%	1%
	Men	8%	-11%	-2%	0%	1%
20-24	Women	4%	-6%	-5%	0%	-5%
	Men	12%	-4%	-3%	0%	-3%
25-29	Women	4%	-6%	-5%	0%	-3%
	Men	11%	-5%	-3%	0%	-6%
30-34	Women	7%	-2%	-3%	0%	-5%
	Men	21%	4%	-3%	0%	-7%
35 and over	Women	11%	-2%	-8%	0%	-4%
	Men	11%	-0%	-9%	0%	0%
All ages	Women	3%	-5%	-4%	0%	1%
	Men	6%	-5%	-3%	0%	0%

### FX.2.9 Applicants by sex : England

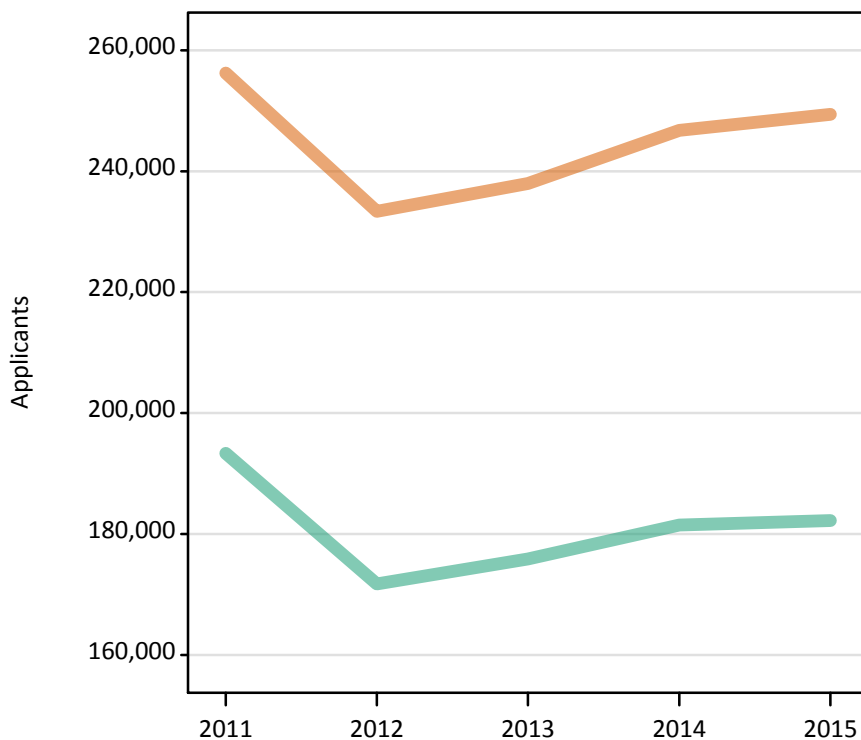
Difference between cycle and 2014 cycle

Men  
Women



### FX.2.10 Applicants by sex : England

Men  
Women



## FX.2.11 Applicants by age and sex : England

Age group and sex of applicant		2011	2012	2013	2014	2015
Under 18	Women	670	490	460	500	490
	Men	460	390	380	380	450
18	Women	122,990	118,960	119,910	123,130	129,640
	Men	99,390	94,270	95,270	98,240	100,520
19	Women	48,880	39,650	44,240	45,570	45,860
	Men	42,090	33,920	38,170	38,760	39,100
20-24	Women	44,250	38,990	39,200	41,440	39,070
	Men	34,140	28,370	27,990	29,260	28,010
25-29	Women	15,060	13,480	13,470	14,130	13,570
	Men	7,270	6,190	6,210	6,430	6,000
30-34	Women	9,220	8,470	8,230	8,440	7,910
	Men	4,040	3,350	3,100	3,190	2,950
35 and over	Women	15,200	13,320	12,440	13,560	12,870
	Men	5,930	5,270	4,750	5,230	5,210
All ages	Women	256,260	233,360	237,960	246,760	249,400
	Men	193,320	171,750	175,860	181,490	182,220

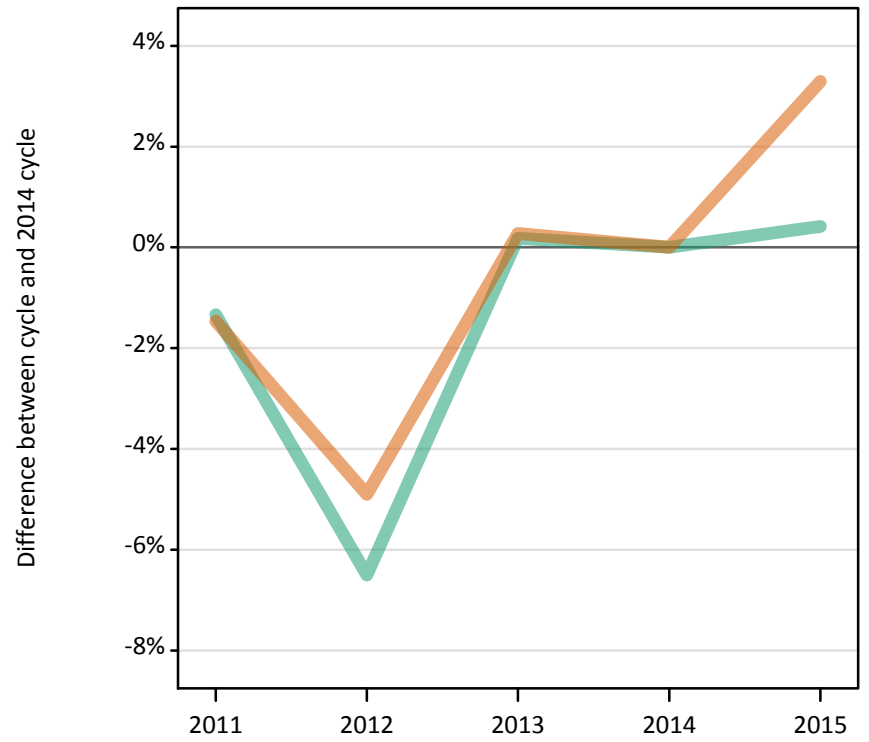
## FX.2.12 Applicants by age and sex : England

Difference between cycle and 2014 cycle

Age group and sex of applicant		2011	2012	2013	2014	2015
Under 18	Women	32%	-2%	-9%	0%	-3%
	Men	20%	3%	-1%	0%	18%
18	Women	-0%	-3%	-3%	0%	5%
	Men	1%	-4%	-3%	0%	2%
19	Women	7%	-13%	-3%	0%	1%
	Men	9%	-12%	-2%	0%	1%
20-24	Women	7%	-6%	-5%	0%	-6%
	Men	17%	-3%	-4%	0%	-4%
25-29	Women	7%	-5%	-5%	0%	-4%
	Men	13%	-4%	-3%	0%	-7%
30-34	Women	9%	0%	-2%	0%	-6%
	Men	27%	5%	-3%	0%	-8%
35 and over	Women	12%	-2%	-8%	0%	-5%
	Men	13%	1%	-9%	0%	-0%
All ages	Women	4%	-5%	-4%	0%	1%
	Men	7%	-5%	-3%	0%	0%

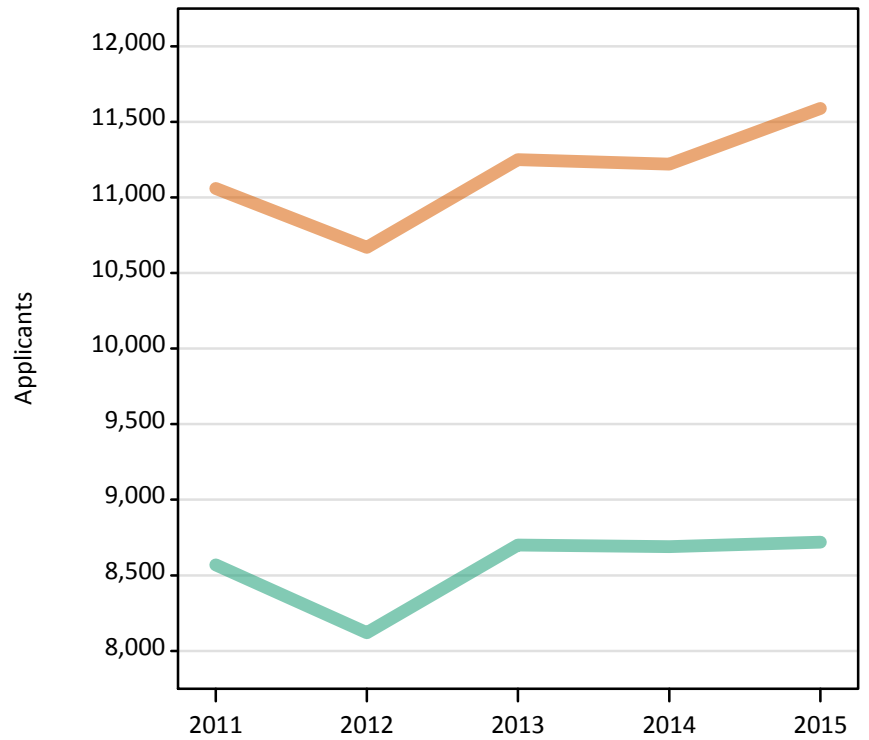
**FX.2.13 Applicants by sex : Northern Ireland**  
Difference between cycle and 2014 cycle

Men  
Women



**FX.2.14 Applicants by sex : Northern Ireland**

Men  
Women



### FX.2.15 Applicants by age and sex : Northern Ireland

Age group and sex of applicant		2011	2012	2013	2014	2015
Under 18	Women	30	30	20	20	20
	Men	20	20	20	10	10
18	Women	6,740	6,700	6,530	6,400	6,830
	Men	5,200	4,990	5,160	5,080	5,130
19	Women	1,670	1,480	1,650	1,650	1,660
	Men	1,360	1,190	1,300	1,380	1,420
20-24	Women	1,740	1,660	1,950	2,030	1,960
	Men	1,480	1,460	1,710	1,720	1,640
25-29	Women	460	410	550	570	540
	Men	320	250	290	270	280
30-34	Women	180	170	260	260	270
	Men	100	100	110	110	130
35 and over	Women	260	210	300	300	300
	Men	100	110	120	120	120
All ages	Women	11,060	10,670	11,250	11,220	11,590
	Men	8,570	8,120	8,700	8,690	8,720

### FX.2.16 Applicants by age and sex : Northern Ireland

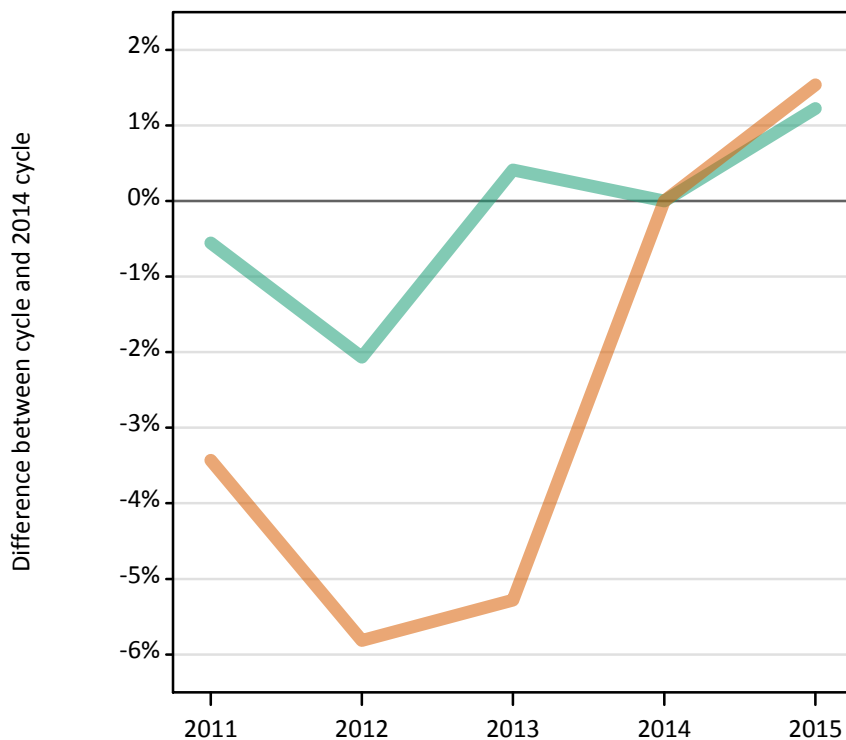
Difference between cycle and 2014 cycle

Age group and sex of applicant		2011	2012	2013	2014	2015
Under 18	Women	47%	100%	6%	0%	29%
	Men	100%	55%	55%	0%	9%
18	Women	5%	5%	2%	0%	7%
	Men	2%	-2%	1%	0%	1%
19	Women	1%	-10%	0%	0%	1%
	Men	-2%	-14%	-6%	0%	3%
20-24	Women	-14%	-18%	-4%	0%	-3%
	Men	-14%	-15%	-0%	0%	-5%
25-29	Women	-19%	-28%	-4%	0%	-5%
	Men	17%	-6%	9%	0%	3%
30-34	Women	-32%	-33%	-0%	0%	5%
	Men	-10%	-3%	-2%	0%	22%
35 and over	Women	-15%	-31%	0%	0%	-1%
	Men	-10%	-5%	0%	0%	2%
All ages	Women	-1%	-5%	0%	0%	3%
	Men	-1%	-7%	0%	0%	0%



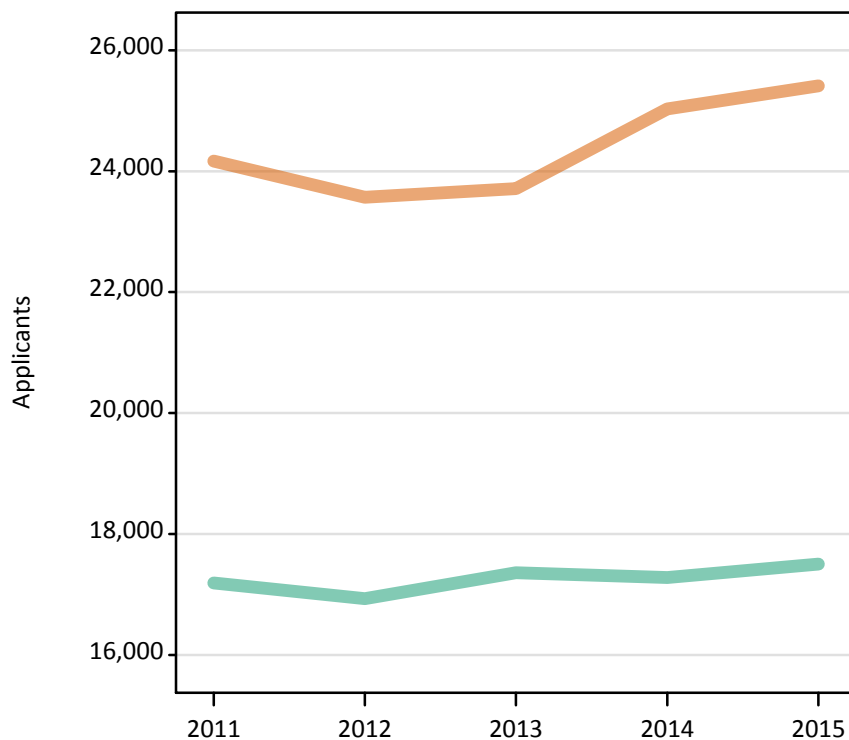
**FX.2.17 Applicants by sex : Scotland**  
Difference between cycle and 2014 cycle

Men  
Women



**FX.2.18 Applicants by sex : Scotland**

Men  
Women



## FX.2.19 Applicants by age and sex : Scotland

Age group and sex of applicant		2011	2012	2013	2014	2015
Under 18	Women	540	470	390	400	450
	Men	360	310	270	250	260
18	Women	10,750	10,780	10,780	11,250	11,380
	Men	8,280	8,010	8,070	8,010	8,070
19	Women	3,150	3,150	3,090	3,110	3,240
	Men	2,280	2,320	2,280	2,260	2,340
20-24	Women	5,490	5,300	5,600	5,930	5,850
	Men	3,910	4,040	4,440	4,320	4,390
25-29	Women	1,780	1,710	1,700	1,910	1,970
	Men	1,200	1,090	1,140	1,220	1,200
30-34	Women	990	870	900	1,000	1,100
	Men	550	540	550	570	530
35 and over	Women	1,470	1,300	1,250	1,430	1,430
	Men	620	620	600	660	710
All ages	Women	24,170	23,570	23,710	25,030	25,410
	Men	17,190	16,930	17,360	17,280	17,500

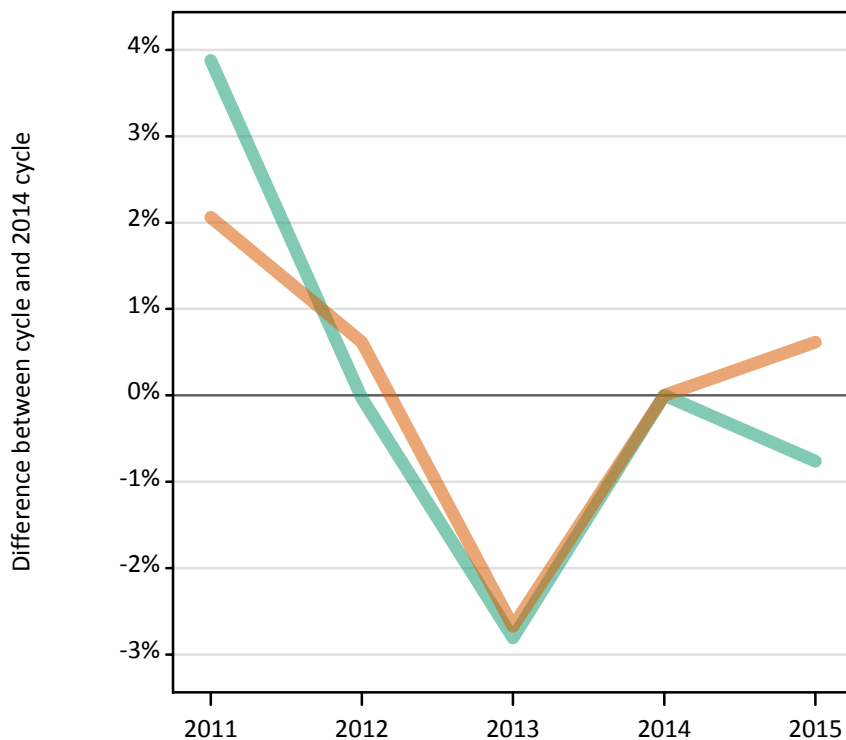
## FX.2.20 Applicants by age and sex : Scotland

Difference between cycle and 2014 cycle

Age group and sex of applicant		2011	2012	2013	2014	2015
Under 18	Women	33%	16%	-3%	0%	11%
	Men	42%	22%	9%	0%	4%
18	Women	-4%	-4%	-4%	0%	1%
	Men	3%	0%	1%	0%	1%
19	Women	1%	1%	-1%	0%	4%
	Men	1%	3%	1%	0%	3%
20-24	Women	-7%	-11%	-6%	0%	-1%
	Men	-9%	-6%	3%	0%	2%
25-29	Women	-7%	-11%	-11%	0%	3%
	Men	-2%	-11%	-7%	0%	-2%
30-34	Women	-1%	-13%	-11%	0%	9%
	Men	-4%	-5%	-3%	0%	-7%
35 and over	Women	3%	-9%	-12%	0%	0%
	Men	-6%	-5%	-8%	0%	8%
All ages	Women	-3%	-6%	-5%	0%	2%
	Men	-1%	-2%	0%	0%	1%

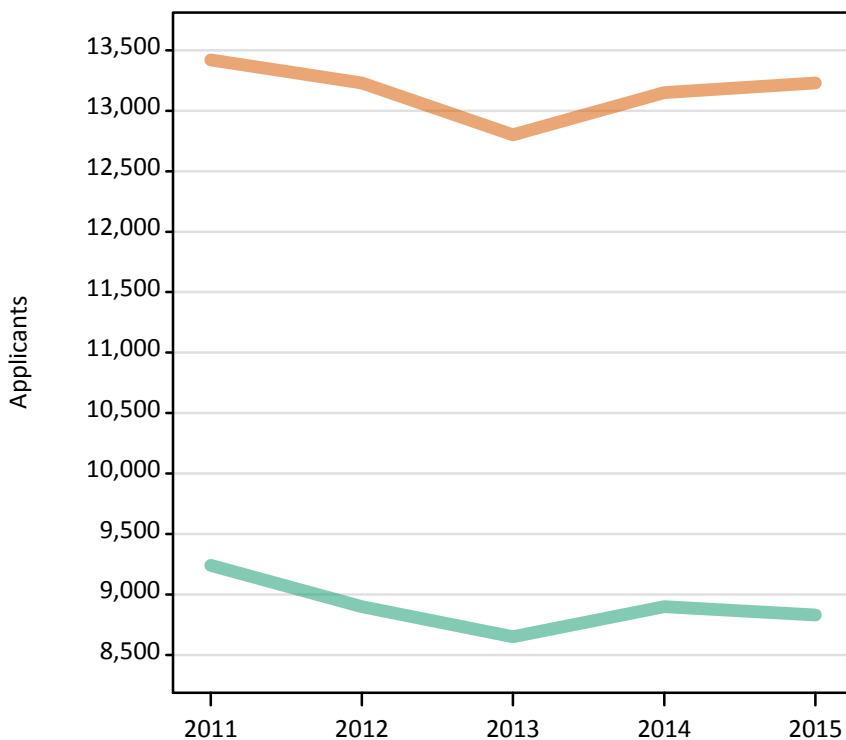
**FX.2.21 Applicants by sex : Wales**  
 Difference between cycle and 2014 cycle

Men  
 Women



**FX.2.22 Applicants by sex : Wales**

Men  
 Women



### FX.2.23 Applicants by age and sex : Wales

Age group and sex of applicant		2011	2012	2013	2014	2015
Under 18	Women	30	10	30	20	20
	Men	20	20	10	10	0
18	Women	6,570	6,570	6,370	6,520	6,900
	Men	4,960	4,770	4,650	4,880	4,880
19	Women	2,310	2,210	2,210	2,300	2,200
	Men	1,810	1,760	1,720	1,770	1,770
20-24	Women	2,420	2,380	2,240	2,290	2,210
	Men	1,600	1,600	1,520	1,490	1,480
25-29	Women	910	860	890	920	850
	Men	410	360	370	370	360
30-34	Women	500	490	460	500	460
	Men	190	190	150	150	130
35 and over	Women	700	700	610	610	600
	Men	260	200	210	220	200
All ages	Women	13,420	13,230	12,800	13,150	13,230
	Men	9,240	8,900	8,650	8,900	8,830

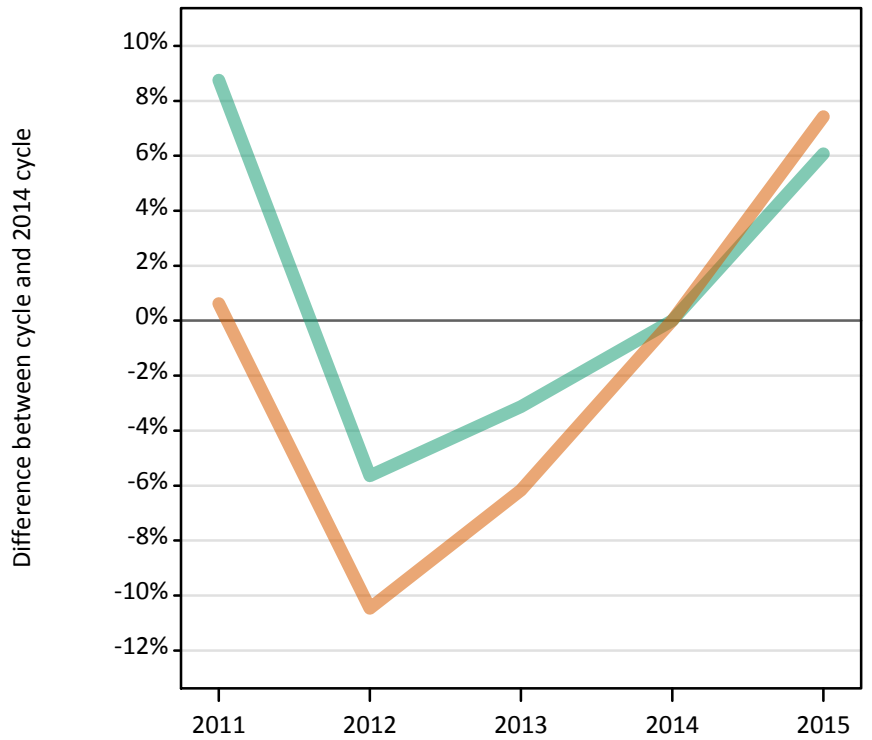
### FX.2.24 Applicants by age and sex : Wales

Difference between cycle and 2014 cycle

Age group and sex of applicant		2011	2012	2013	2014	2015
Under 18	Women	93%	-27%	67%	0%	20%
	Men	31%	15%	0%	0%	-85%
18	Women	1%	1%	-2%	0%	6%
	Men	2%	-2%	-5%	0%	0%
19	Women	0%	-4%	-4%	0%	-4%
	Men	2%	-1%	-3%	0%	0%
20-24	Women	6%	4%	-2%	0%	-4%
	Men	8%	7%	2%	0%	-1%
25-29	Women	-1%	-6%	-3%	0%	-7%
	Men	11%	-2%	0%	0%	-3%
30-34	Women	-0%	-1%	-7%	0%	-7%
	Men	22%	23%	1%	0%	-14%
35 and over	Women	14%	15%	0%	0%	-3%
	Men	18%	-7%	-2%	0%	-8%
All ages	Women	2%	1%	-3%	0%	1%
	Men	4%	-0%	-3%	0%	-1%

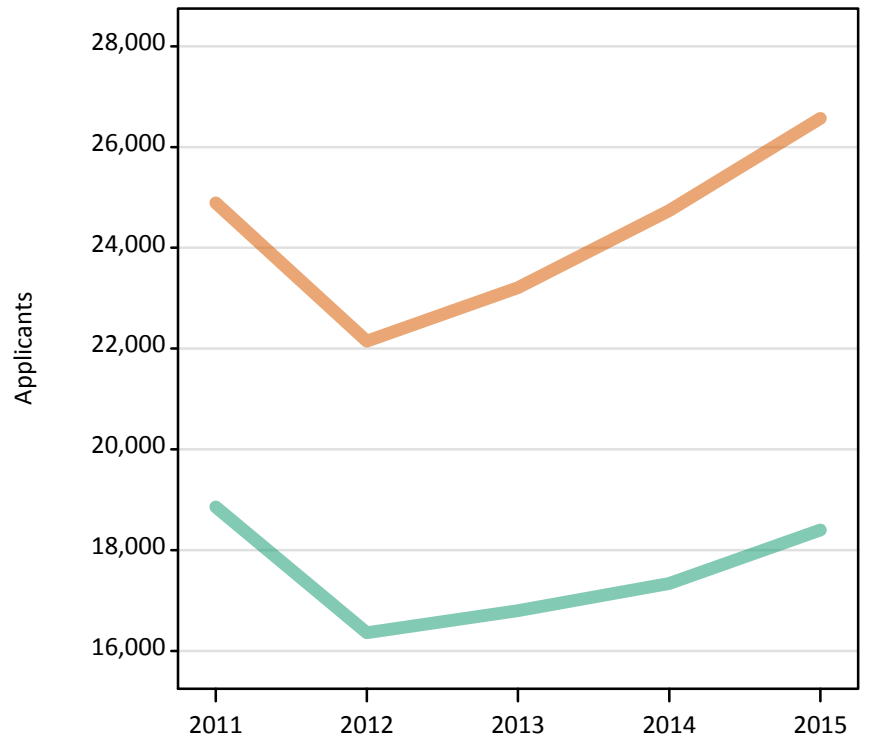
**FX.2.25 Applicants by sex : EU (excluding UK)**  
Difference between cycle and 2014 cycle

Men  
Women



**FX.2.26 Applicants by sex : EU (excluding UK)**

Men  
Women



### FX.2.27 Applicants by age and sex : EU (excluding UK)

Age group and sex of applicant		2011	2012	2013	2014	2015
Under 18	Women	1,840	1,810	1,850	2,110	2,320
	Men	1,110	1,020	1,160	1,230	1,480
18	Women	8,030	7,630	8,030	8,620	9,650
	Men	5,170	5,180	5,320	5,760	6,390
19	Women	7,340	6,580	6,990	7,500	7,990
	Men	5,810	4,930	5,150	5,140	5,500
20-24	Women	6,510	5,160	5,410	5,570	5,660
	Men	5,670	4,390	4,370	4,490	4,290
25-29	Women	850	640	660	660	650
	Men	770	540	500	480	530
30-34	Women	210	180	160	150	150
	Men	210	170	160	130	120
35 and over	Women	130	140	120	150	140
	Men	130	130	140	110	100
All ages	Women	24,890	22,150	23,210	24,740	26,570
	Men	18,860	16,360	16,800	17,340	18,400

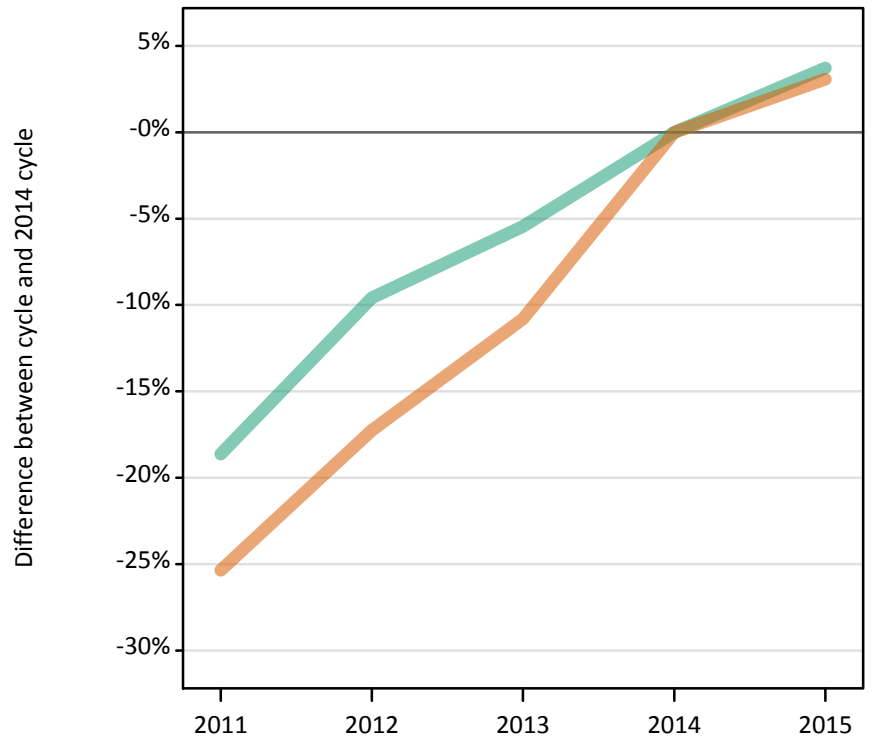
### FX.2.28 Applicants by age and sex : EU (excluding UK)

Difference between cycle and 2014 cycle

Age group and sex of applicant		2011	2012	2013	2014	2015
Under 18	Women	-13%	-14%	-12%	0%	10%
	Men	-10%	-17%	-6%	0%	20%
18	Women	-7%	-11%	-7%	0%	12%
	Men	-10%	-10%	-8%	0%	11%
19	Women	-2%	-12%	-7%	0%	7%
	Men	13%	-4%	0%	0%	7%
20-24	Women	17%	-7%	-3%	0%	2%
	Men	26%	-2%	-3%	0%	-5%
25-29	Women	29%	-2%	0%	0%	-1%
	Men	59%	12%	4%	0%	9%
30-34	Women	39%	19%	7%	0%	1%
	Men	62%	30%	25%	0%	-5%
35 and over	Women	-10%	-5%	-21%	0%	-1%
	Men	20%	15%	23%	0%	-11%
All ages	Women	1%	-10%	-6%	0%	7%
	Men	9%	-6%	-3%	0%	6%

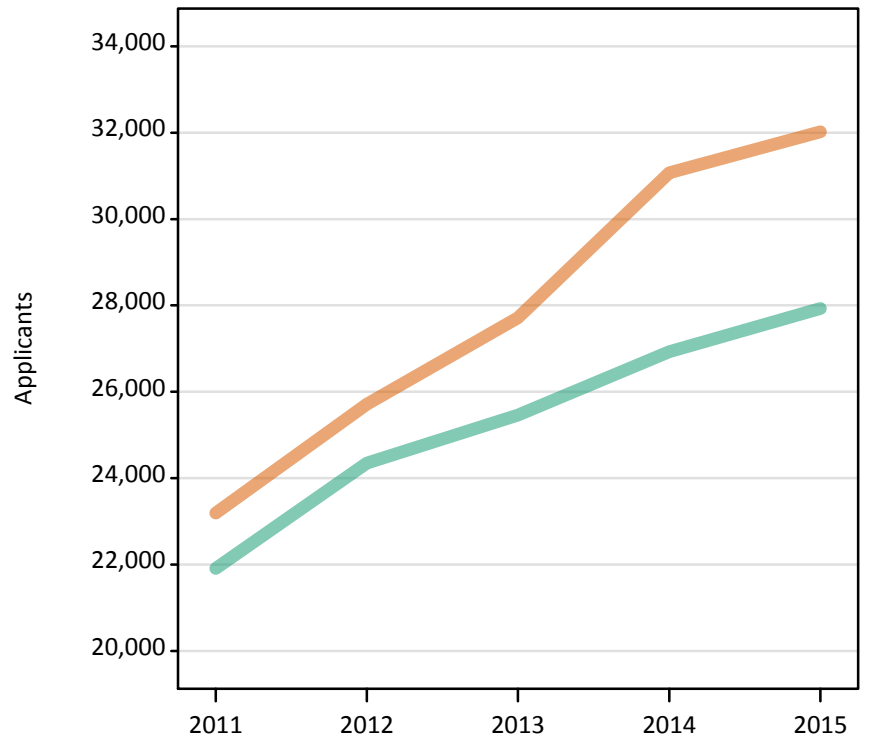
**FX.2.29 Applicants by sex : Not EU**  
Difference between cycle and 2014 cycle

Men  
Women



**FX.2.30 Applicants by sex : Not EU**

Men  
Women



### FX.2.31 Applicants by age and sex : Not EU

Age group and sex of applicant		2011	2012	2013	2014	2015
Under 18	Women	1,680	2,040	2,370	2,810	2,700
	Men	1,460	1,880	2,120	2,400	2,410
18	Women	7,810	8,920	10,310	11,370	12,230
	Men	6,850	7,850	8,670	9,410	10,280
19	Women	6,340	7,020	7,300	8,220	8,340
	Men	5,600	6,090	6,230	6,660	6,880
20-24	Women	6,110	6,570	6,640	7,530	7,460
	Men	6,510	7,050	7,080	7,160	7,100
25-29	Women	800	730	710	740	860
	Men	970	940	900	820	810
30-34	Women	270	250	220	230	230
	Men	330	300	280	290	280
35 and over	Women	190	180	160	170	200
	Men	200	230	190	190	180
All ages	Women	23,190	25,710	27,710	31,070	32,020
	Men	21,910	24,350	25,460	26,930	27,930

### FX.2.32 Applicants by age and sex : Not EU

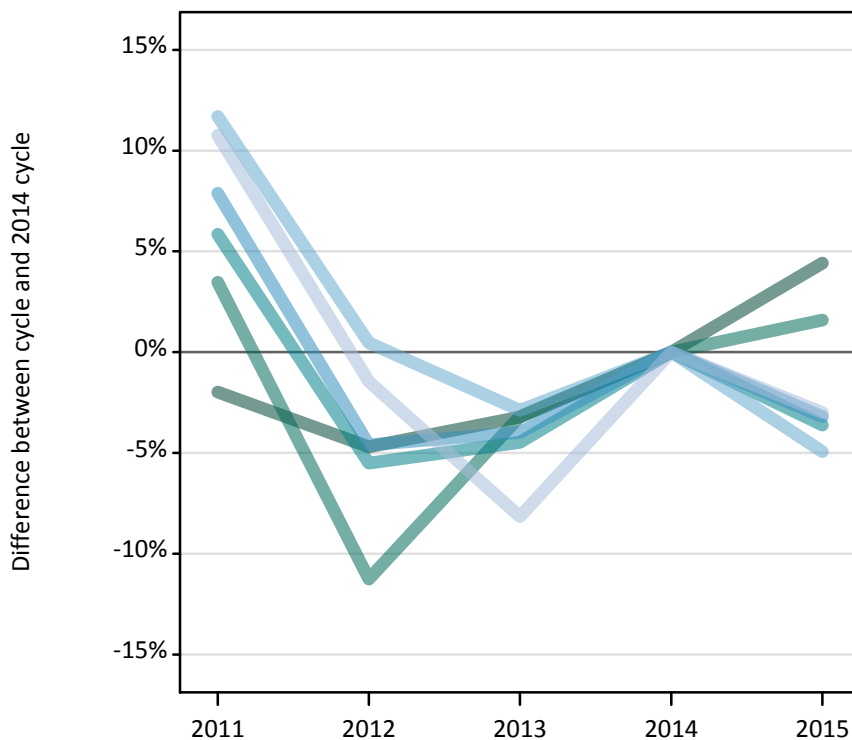
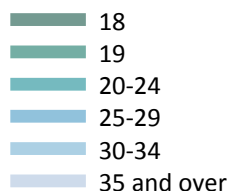
Difference between cycle and 2014 cycle

Age group and sex of applicant		2011	2012	2013	2014	2015
Under 18	Women	-40%	-27%	-16%	0%	-4%
	Men	-39%	-21%	-12%	0%	0%
18	Women	-31%	-22%	-9%	0%	8%
	Men	-27%	-17%	-8%	0%	9%
19	Women	-23%	-15%	-11%	0%	1%
	Men	-16%	-9%	-6%	0%	3%
20-24	Women	-19%	-13%	-12%	0%	-1%
	Men	-9%	-1%	-1%	0%	-1%
25-29	Women	7%	-1%	-4%	0%	16%
	Men	17%	14%	9%	0%	-2%
30-34	Women	18%	9%	-4%	0%	3%
	Men	15%	5%	-3%	0%	-3%
35 and over	Women	11%	6%	-8%	0%	19%
	Men	3%	17%	-4%	0%	-7%
All ages	Women	-25%	-17%	-11%	0%	3%
	Men	-19%	-10%	-5%	0%	4%



### FX.2.33 Applicants by domicile and age : All domiciles

Difference between cycle and 2014 cycle



### FX.2.34 Applicants by domicile and age : All domiciles

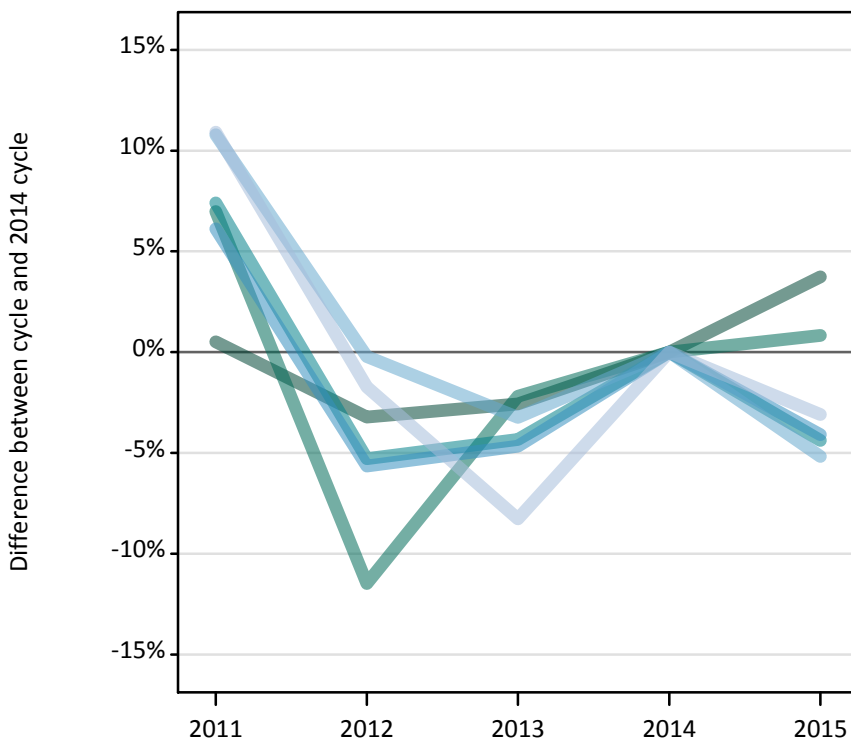
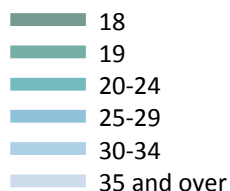
Domicile and age group		2011	2012	2013	2014	2015
All domiciles	Under 18	8,190	8,490	9,070	10,130	10,590
	18	292,730	284,620	289,070	298,670	311,890
	19	128,620	110,310	120,340	124,310	126,300
	20-24	119,830	106,980	108,150	113,210	109,110
	25-29	30,770	27,210	27,390	28,520	27,610
	30-34	16,770	15,080	14,580	15,010	14,270
	35 and over	25,180	22,400	20,880	22,730	22,050

### FX.2.35 Applicants by domicile and age : All domiciles

Difference between cycle and 2014 cycle

Domicile and age group		2011	2012	2013	2014	2015
All domiciles	Under 18	-19%	-16%	-11%	0%	5%
	18	-2%	-5%	-3%	0%	4%
	19	3%	-11%	-3%	0%	2%
	20-24	6%	-6%	-4%	0%	-4%
	25-29	8%	-5%	-4%	0%	-3%
	30-34	12%	0%	-3%	0%	-5%
	35 and over	11%	-1%	-8%	0%	-3%

**FX.2.36 Applicants by domicile and age : UK**  
Difference between cycle and 2014 cycle



**FX.2.37 Applicants by domicile and age : UK**

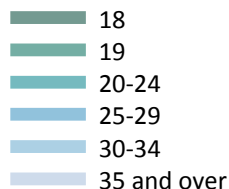
Domicile and age group		2011	2012	2013	2014	2015
UK	Under 18	2,110	1,730	1,570	1,590	1,690
	18	264,880	255,040	256,740	263,510	273,350
	19	103,540	85,680	94,670	96,790	97,590
	20-24	95,030	83,800	84,650	88,470	84,600
	25-29	27,400	24,360	24,610	25,820	24,760
	30-34	15,760	14,190	13,760	14,220	13,490
	35 and over	24,530	21,730	20,290	22,110	21,430

**FX.2.38 Applicants by domicile and age : UK**  
Difference between cycle and 2014 cycle

Domicile and age group		2011	2012	2013	2014	2015
UK	Under 18	32%	9%	-1%	0%	7%
	18	1%	-3%	-3%	0%	4%
	19	7%	-11%	-2%	0%	1%
	20-24	7%	-5%	-4%	0%	-4%
	25-29	6%	-6%	-5%	0%	-4%
	30-34	11%	-0%	-3%	0%	-5%
	35 and over	11%	-2%	-8%	0%	-3%

### FX.2.39 Applicants by domicile and age : England

Difference between cycle and 2014 cycle



### FX.2.40 Applicants by domicile and age : England

Domicile and age group		2011	2012	2013	2014	2015
England	Under 18	1,120	880	830	880	930
	18	222,390	213,220	215,180	221,370	230,160
	19	90,970	73,570	82,410	84,320	84,950
	20-24	78,400	67,360	67,190	70,700	67,080
	25-29	22,330	19,670	19,680	20,560	19,560
	30-34	13,260	11,820	11,330	11,640	10,860
	35 and over	21,120	18,590	17,190	18,790	18,080

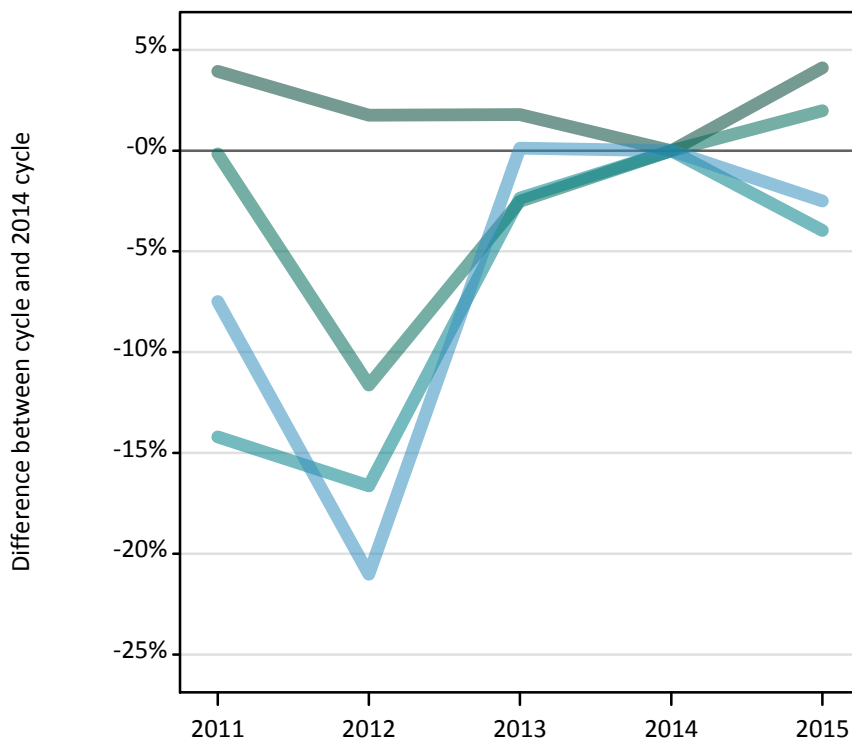
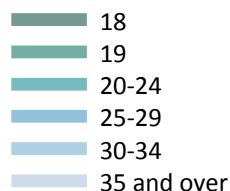
### FX.2.41 Applicants by domicile and age : England

Difference between cycle and 2014 cycle

Domicile and age group		2011	2012	2013	2014	2015
England	Under 18	27%	-0%	-5%	0%	6%
	18	0%	-4%	-3%	0%	4%
	19	8%	-13%	-2%	0%	1%
	20-24	11%	-5%	-5%	0%	-5%
	25-29	9%	-4%	-4%	0%	-5%
	30-34	14%	2%	-3%	0%	-7%
	35 and over	12%	-1%	-9%	0%	-4%

### FX.2.42 Applicants by domicile and age : Northern Ireland

Difference between cycle and 2014 cycle



### FX.2.43 Applicants by domicile and age : Northern Ireland

Domicile and age group		2011	2012	2013	2014	2015
Northern Ireland	Under 18	50	50	40	30	30
	18	11,940	11,690	11,690	11,490	11,960
	19	3,020	2,670	2,950	3,030	3,090
	20-24	3,210	3,120	3,660	3,750	3,600
	25-29	780	670	840	840	820
	30-34	270	280	360	370	400
	35 and over	360	320	420	420	420

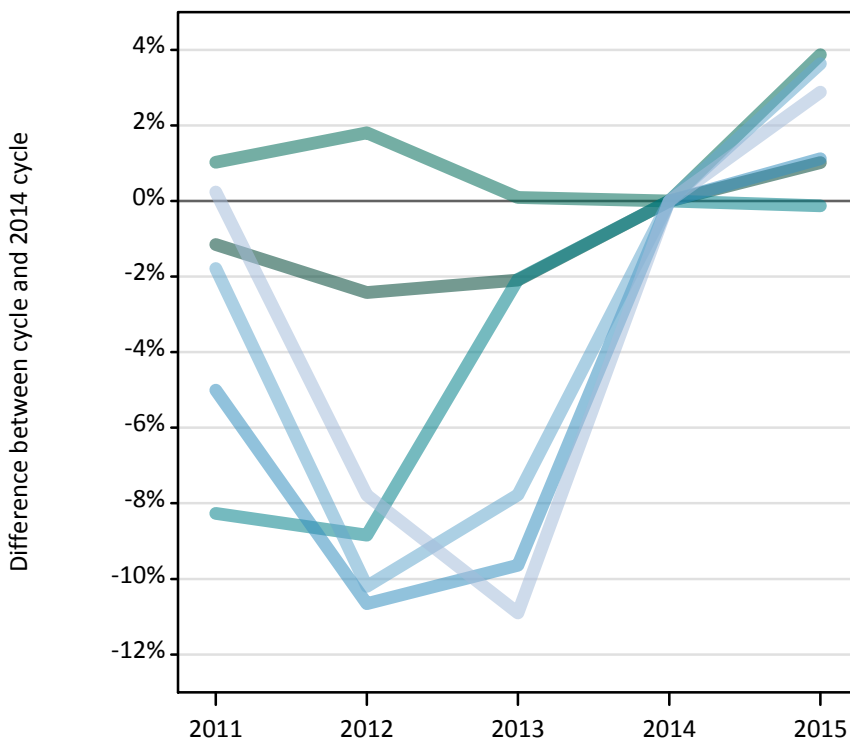
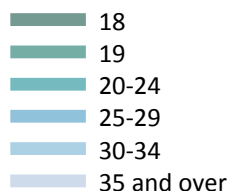
### FX.2.44 Applicants by domicile and age : Northern Ireland

Difference between cycle and 2014 cycle

Domicile and age group		2011	2012	2013	2014	2015
Northern Ireland	Under 18	68%	82%	25%	0%	21%
	18	4%	2%	2%	0%	4%
	19	-0%	-12%	-3%	0%	2%
	20-24	-14%	-17%	-2%	0%	-4%
	25-29	-7%	-21%	0%	0%	-2%
	30-34	-26%	-24%	-1%	0%	10%
	35 and over	-13%	-24%	0%	0%	-0%

### FX.2.45 Applicants by domicile and age : Scotland

Difference between cycle and 2014 cycle



### FX.2.46 Applicants by domicile and age : Scotland

Domicile and age group		2011	2012	2013	2014	2015
Scotland	Under 18	890	770	660	650	710
	18	19,030	18,790	18,850	19,250	19,450
	19	5,430	5,470	5,380	5,370	5,580
	20-24	9,400	9,340	10,040	10,250	10,240
	25-29	2,980	2,800	2,830	3,130	3,170
	30-34	1,540	1,410	1,450	1,570	1,630
	35 and over	2,090	1,920	1,860	2,080	2,140

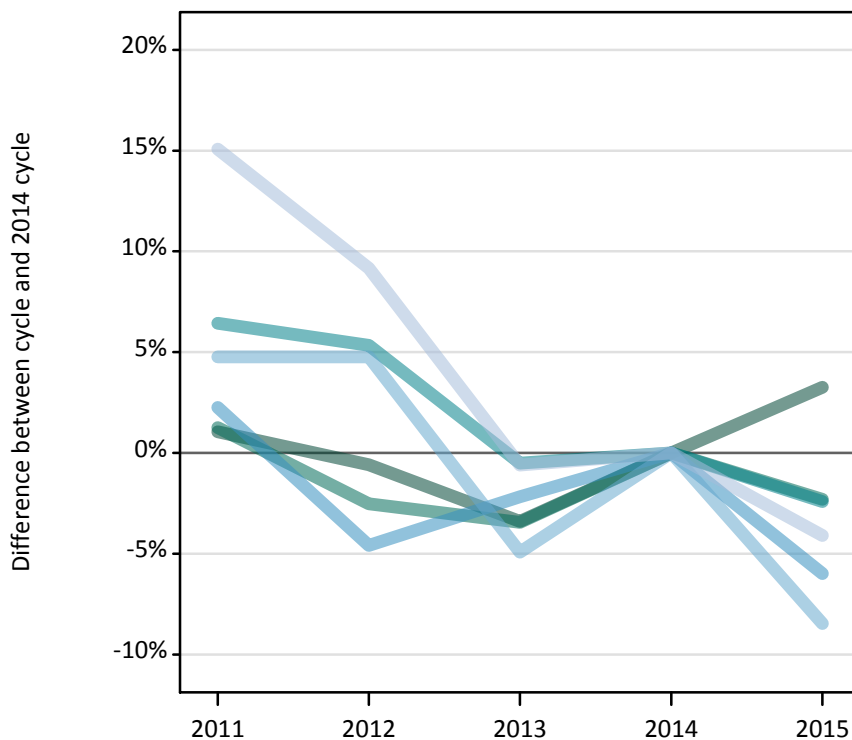
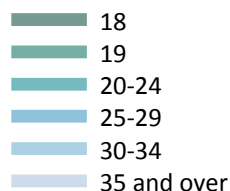
### FX.2.47 Applicants by domicile and age : Scotland

Difference between cycle and 2014 cycle

Domicile and age group		2011	2012	2013	2014	2015
Scotland	Under 18	37%	18%	2%	0%	8%
	18	-1%	-2%	-2%	0%	1%
	19	1%	2%	0%	0%	4%
	20-24	-8%	-9%	-2%	0%	-0%
	25-29	-5%	-11%	-10%	0%	1%
	30-34	-2%	-10%	-8%	0%	4%
	35 and over	0%	-8%	-11%	0%	3%

### FX.2.48 Applicants by domicile and age : Wales

Difference between cycle and 2014 cycle



### FX.2.49 Applicants by domicile and age : Wales

Domicile and age group		2011	2012	2013	2014	2015
Wales	Under 18	50	30	40	30	20
	18	11,530	11,340	11,020	11,410	11,780
	19	4,120	3,970	3,930	4,070	3,980
	20-24	4,020	3,980	3,760	3,780	3,690
	25-29	1,320	1,230	1,260	1,290	1,210
	30-34	680	680	620	650	600
	35 and over	950	910	820	830	800

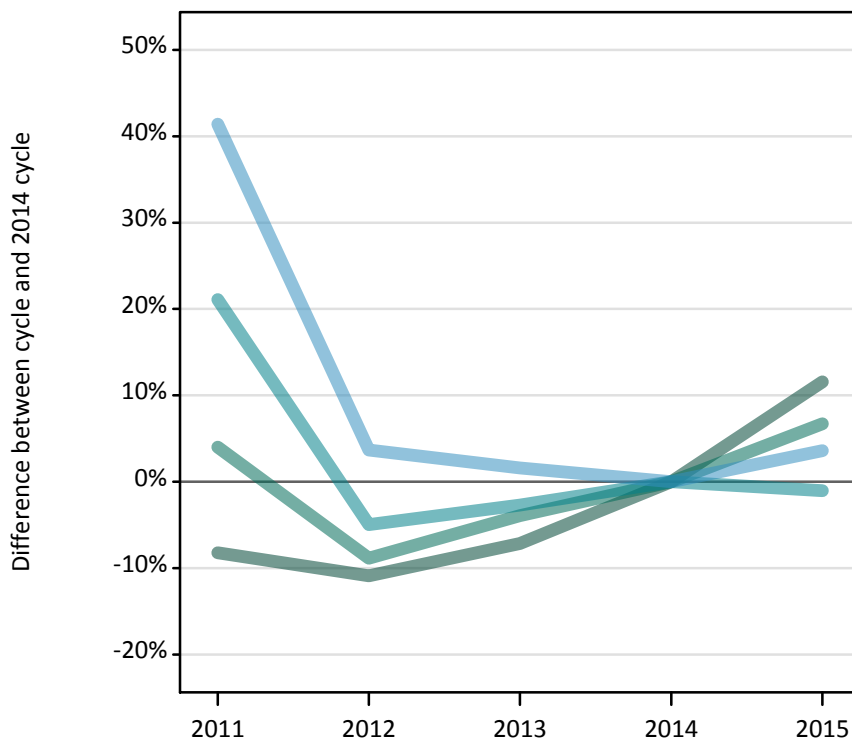
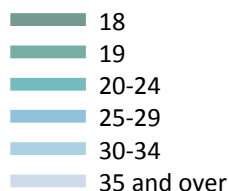
### FX.2.50 Applicants by domicile and age : Wales

Difference between cycle and 2014 cycle

Domicile and age group		2011	2012	2013	2014	2015
Wales	Under 18	64%	-7%	36%	0%	-29%
	18	1%	-1%	-3%	0%	3%
	19	1%	-3%	-3%	0%	-2%
	20-24	6%	5%	-1%	0%	-2%
	25-29	2%	-5%	-2%	0%	-6%
	30-34	5%	5%	-5%	0%	-8%
	35 and over	15%	9%	-1%	0%	-4%

### FX.2.51 Applicants by domicile and age : EU (excluding UK)

Difference between cycle and 2014 cycle



### FX.2.52 Applicants by domicile and age : EU (excluding UK)

Domicile and age group		2011	2012	2013	2014	2015
EU (excluding UK)	Under 18	2,950	2,840	3,010	3,340	3,800
	18	13,190	12,810	13,350	14,380	16,040
	19	13,140	11,520	12,140	12,640	13,490
	20-24	12,170	9,560	9,780	10,060	9,950
	25-29	1,610	1,180	1,160	1,140	1,180
	30-34	410	350	320	280	270
	35 and over	260	270	250	260	240

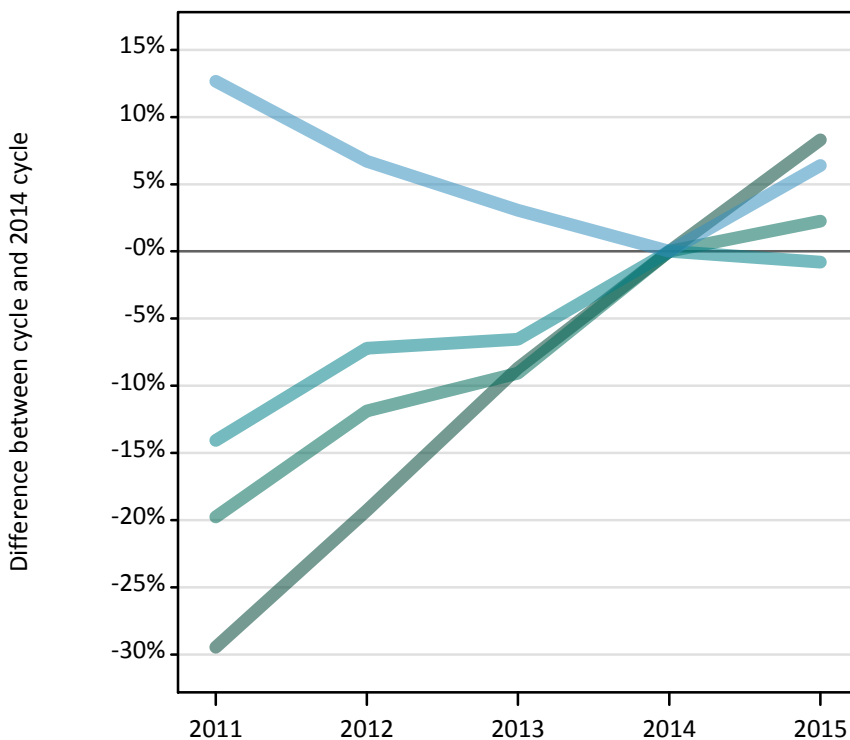
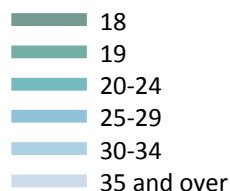
### FX.2.53 Applicants by domicile and age : EU (excluding UK)

Difference between cycle and 2014 cycle

Domicile and age group		2011	2012	2013	2014	2015
EU (excluding UK)	Under 18	-12%	-15%	-10%	0%	14%
	18	-8%	-11%	-7%	0%	12%
	19	4%	-9%	-4%	0%	7%
	20-24	21%	-5%	-3%	0%	-1%
	25-29	41%	4%	2%	0%	4%
	30-34	49%	25%	16%	0%	-1%
	35 and over	3%	4%	-2%	0%	-5%

### FX.2.54 Applicants by domicile and age : Not EU

Difference between cycle and 2014 cycle



### FX.2.55 Applicants by domicile and age : Not EU

Domicile and age group		2011	2012	2013	2014	2015
Not EU	Under 18	3,140	3,920	4,490	5,210	5,100
	18	14,660	16,770	18,980	20,780	22,510
	19	11,940	13,120	13,540	14,880	15,220
	20-24	12,620	13,630	13,720	14,680	14,570
	25-29	1,760	1,670	1,610	1,570	1,670
	30-34	600	550	500	520	510
	35 and over	390	400	340	360	380

### FX.2.56 Applicants by domicile and age : Not EU

Difference between cycle and 2014 cycle

Domicile and age group		2011	2012	2013	2014	2015
Not EU	Under 18	-40%	-25%	-14%	0%	-2%
	18	-29%	-19%	-9%	0%	8%
	19	-20%	-12%	-9%	0%	2%
	20-24	-14%	-7%	-7%	0%	-1%
	25-29	13%	7%	3%	0%	6%
	30-34	16%	7%	-3%	0%	-0%
	35 and over	7%	12%	-6%	0%	5%



## FX.2.57 Technical notes and definitions

These additional tables have been produced to help comparisons through time, particularly when considering Scottish domiciled applicants and Scottish providers.

In 2015, a set of courses relating to teacher training that historically would only have been available through UCAS Teacher Training, and therefore not previously counted in the scope of this statistical release, were brought into the undergraduate UCAS scheme. These courses are all offered by providers based in Scotland and are in the JACS3 detailed subject reporting grouping of 'X1'. The large majority of applications to these courses are from applicants living in Scotland.

These additional tables exclude any applications made by applicants to subject group 'X1' at Scottish providers and provide a better 'like for like' comparison particularly when considering Scottish domiciled applicants and Scottish providers. The primary deadline applicant statistics which include all applications to Scottish providers are available upon the UCAS website.

Applicants have been able to submit applications for all 2015 courses since early September.

People who submit their applications to UCAS by the January deadline are considered 'on time' applicants for the large majority of courses offered through UCAS. Some art and design courses have a later deadline of 24 March. Almost all main scheme applications have been received by the 24 March deadline.

Counts of the number of applicants reported have been rounded to the nearest 10 applicants, this may result in instances where totals do not equal the sum of the components. Proportional changes have been rounded to the nearest whole percentage point.

### Age

This statistical release uses country-specific age definitions which align with the cut off points for school/college cohorts within the different administrations of the UK. For England and Wales ages are defined on the 31 August, for Northern Ireland on the 1 July and for Scotland on the 28 February the following year. Defining ages in this way matches the assignment of children to school cohorts. For applicants outside of the UK the cohort cut off for England and Wales has been used.

### Applicant

A person who has made an application in the UCAS system during the cycle reported, this includes those who submit applications for deferred entry. RPAs are excluded.

### Application

An application to a course at a provider made by an applicant in the UCAS main scheme. Applicants may make up to five main scheme applications.

### Country of provider

An applicant may be counted once for each provider country they have applied to in the main scheme. If an applicant has applied to providers in multiple countries then the applicant is counted once within each country of provider applied to.

This statistical release excludes a small number of applications to a provider based in the EU.

### Domicile

Declared area of permanent residence. The Channel Islands and the Isle of Man have been assigned as 'Not EU'.

### First time applicant

An applicant that did not apply to the UCAS scheme in the previous cycle.

### Main scheme

The main UCAS application scheme through which up to five providers/courses can be applied to. This opens in September and closes to new applications on 30 June the following year.

### Reapplicant

An applicant that applied to the UCAS scheme in the previous cycle.

## **FX.2.58 Technical notes and definitions: continued**

### **Subject group**

The JACS3 classification used to classify courses into subject groups.

### **Tariff group of provider**

Providers are grouped as higher, medium or lower tariff based on their average levels of attainment of their accepted applicants (summarised through UCAS Tariff points) in recent cycles. Each group of providers accounted for around a third of all UK 18 year old acceptances in recent cycles.