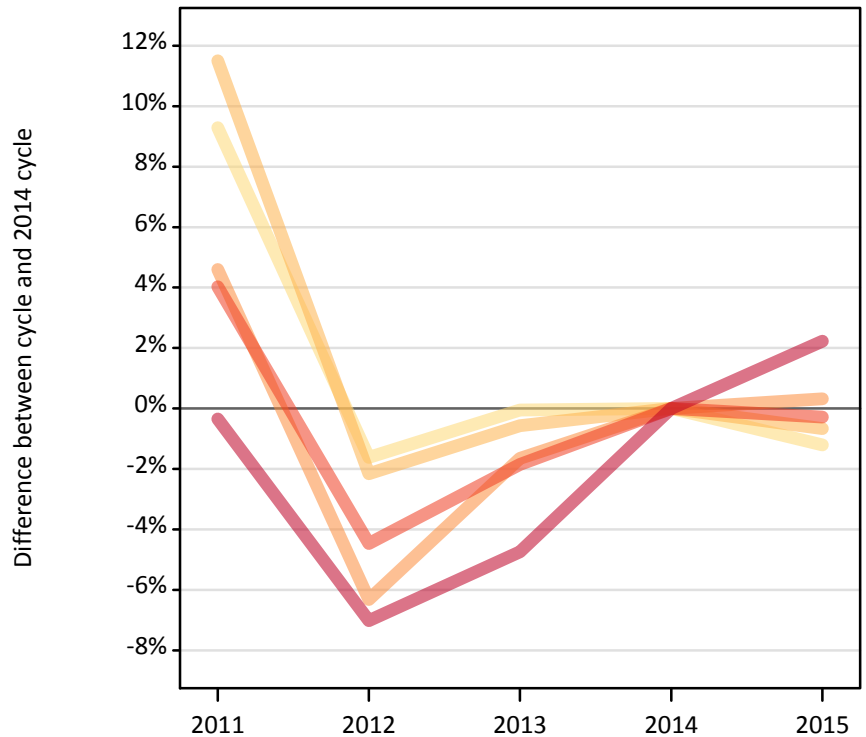
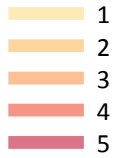


Applicants by number of applications at the 24 March deadline (No Scot. X1)

FX.4.1 Applicants by domicile and number of applications made : All domiciles

Difference between cycle and 2014 cycle



FX.4.2 Applicants by domicile and number of applications made : All domiciles

Domicile and number of applications made by applicant		2011	2012	2013	2014	2015
All domiciles	1	55,380	49,850	50,650	50,670	50,060
	2	25,820	22,660	23,020	23,160	23,000
	3	32,940	29,500	30,970	31,490	31,590
	4	58,310	53,560	55,020	56,060	55,900
	5	449,640	419,530	429,800	451,220	461,270
	All	622,090	575,090	589,470	612,590	621,830

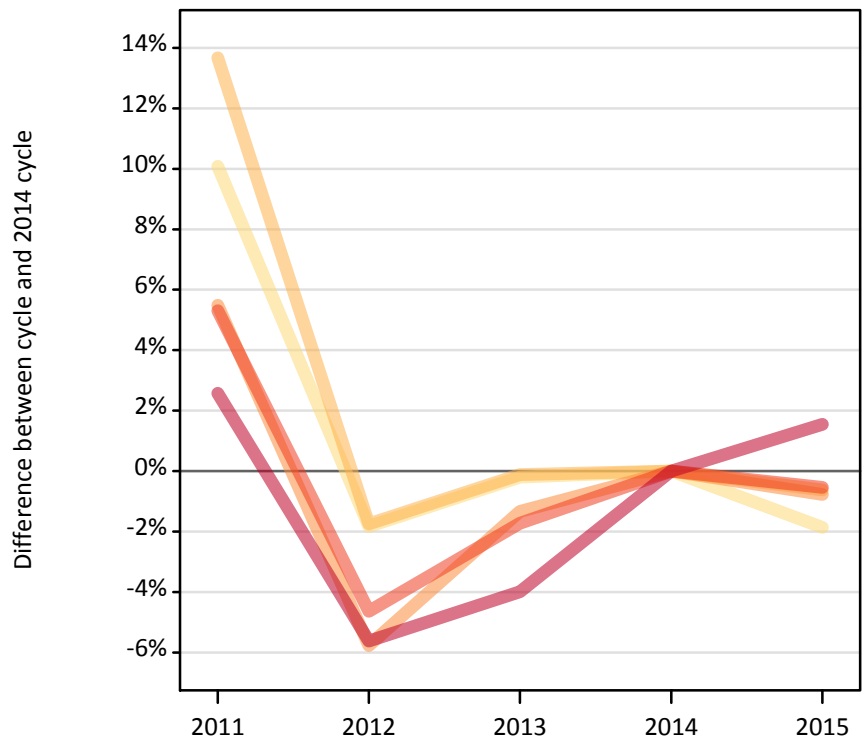
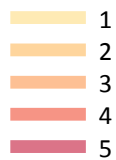
FX.4.3 Applicants by domicile and number of applications made : All domiciles

Difference between cycle and 2014 cycle

Domicile and number of applications made by applicant		2011	2012	2013	2014	2015
All domiciles	1	9%	-2%	-0%	0%	-1%
	2	12%	-2%	-1%	0%	-1%
	3	5%	-6%	-2%	0%	0%
	4	4%	-4%	-2%	0%	-0%
	5	-0%	-7%	-5%	0%	2%
	All	2%	-6%	-4%	0%	2%

FX.4.4 Applicants by domicile and number of applications made : UK

Difference between cycle and 2014 cycle



FX.4.5 Applicants by domicile and number of applications made : UK

Domicile and number of applications made by applicant		2011	2012	2013	2014	2015
UK	1	47,170	42,070	42,770	42,860	42,060
	2	22,570	19,510	19,840	19,860	19,730
	3	28,580	25,530	26,730	27,090	26,890
	4	50,660	45,880	47,280	48,110	47,850
	5	384,250	353,540	359,670	374,600	380,380
	All	533,230	486,530	496,280	512,520	516,910

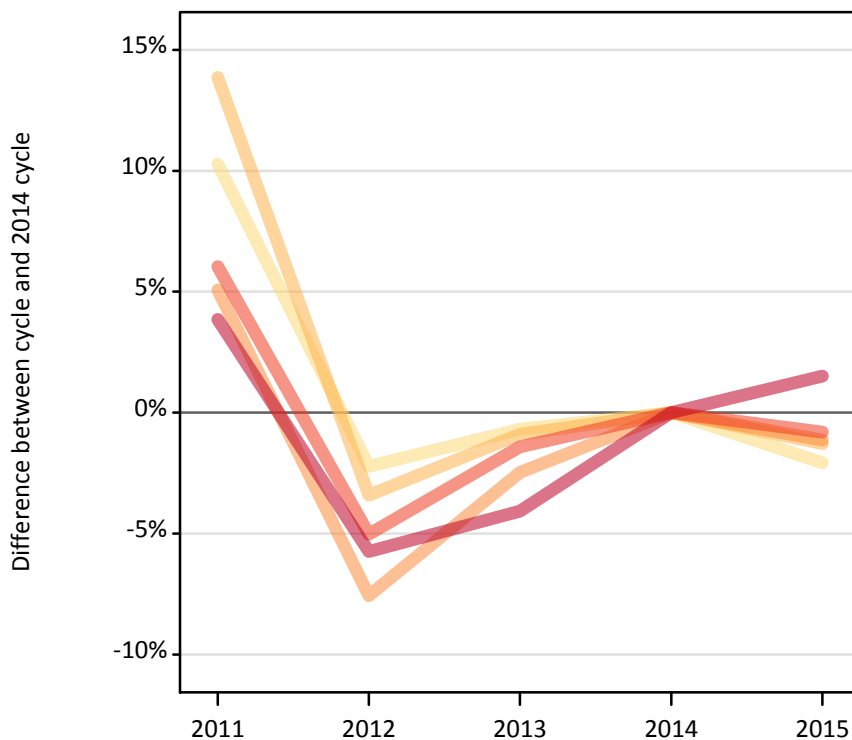
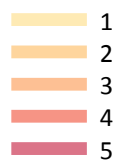
FX.4.6 Applicants by domicile and number of applications made : UK

Difference between cycle and 2014 cycle

Domicile and number of applications made by applicant		2011	2012	2013	2014	2015
UK	1	10%	-2%	-0%	0%	-2%
	2	14%	-2%	-0%	0%	-1%
	3	5%	-6%	-1%	0%	-1%
	4	5%	-5%	-2%	0%	-1%
	5	3%	-6%	-4%	0%	2%
	All	4%	-5%	-3%	0%	1%

FX.4.7 Applicants by domicile and number of applications made : England

Difference between cycle and 2014 cycle



FX.4.8 Applicants by domicile and number of applications made : England

Domicile and number of applications made by applicant		2011	2012	2013	2014	2015
England	1	38,170	33,840	34,380	34,610	33,900
	2	17,190	14,580	14,960	15,100	14,910
	3	22,080	19,420	20,490	21,010	20,770
	4	41,120	36,820	38,230	38,770	38,460
	5	331,030	300,430	305,760	318,750	323,580
	All	449,580	405,110	413,820	428,250	431,620

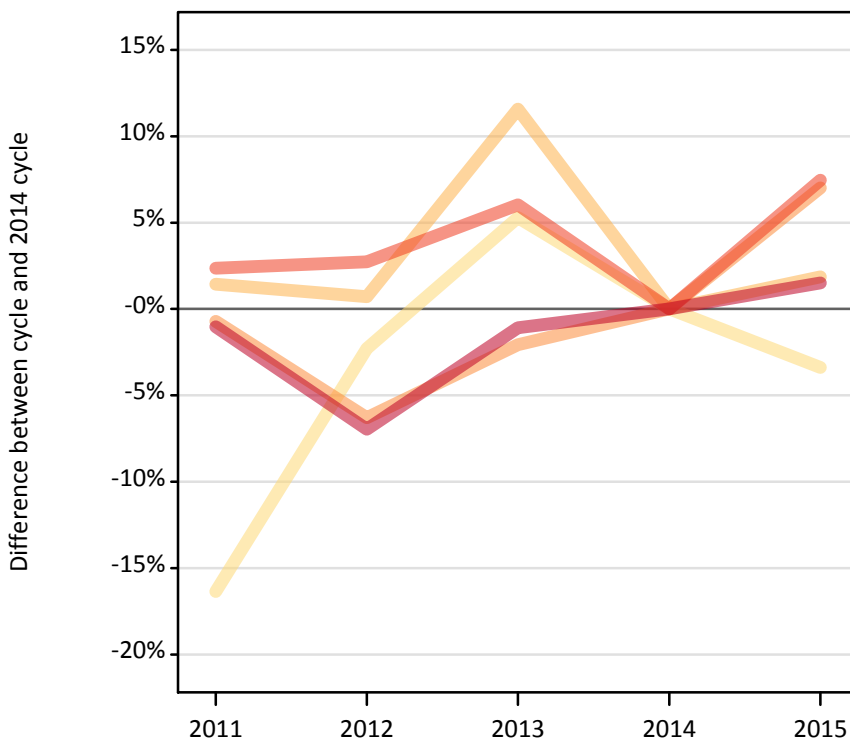
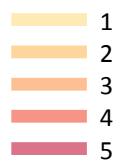
FX.4.9 Applicants by domicile and number of applications made : England

Difference between cycle and 2014 cycle

Domicile and number of applications made by applicant		2011	2012	2013	2014	2015
England	1	10%	-2%	-1%	0%	-2%
	2	14%	-3%	-1%	0%	-1%
	3	5%	-8%	-2%	0%	-1%
	4	6%	-5%	-1%	0%	-1%
	5	4%	-6%	-4%	0%	2%
	All	5%	-5%	-3%	0%	1%

FX.4.10 Applicants by domicile and number of applications made : Northern Ireland

Difference between cycle and 2014 cycle



FX.4.11 Applicants by domicile and number of applications made : Northern Ireland

Domicile and number of applications made by applicant		2011	2012	2013	2014	2015
Northern Ireland	1	840	980	1,060	1,000	970
	2	710	710	780	700	710
	3	960	910	950	970	1,040
	4	1,730	1,740	1,790	1,690	1,820
	5	15,390	14,460	15,380	15,550	15,780
	All	19,630	18,790	19,960	19,910	20,320

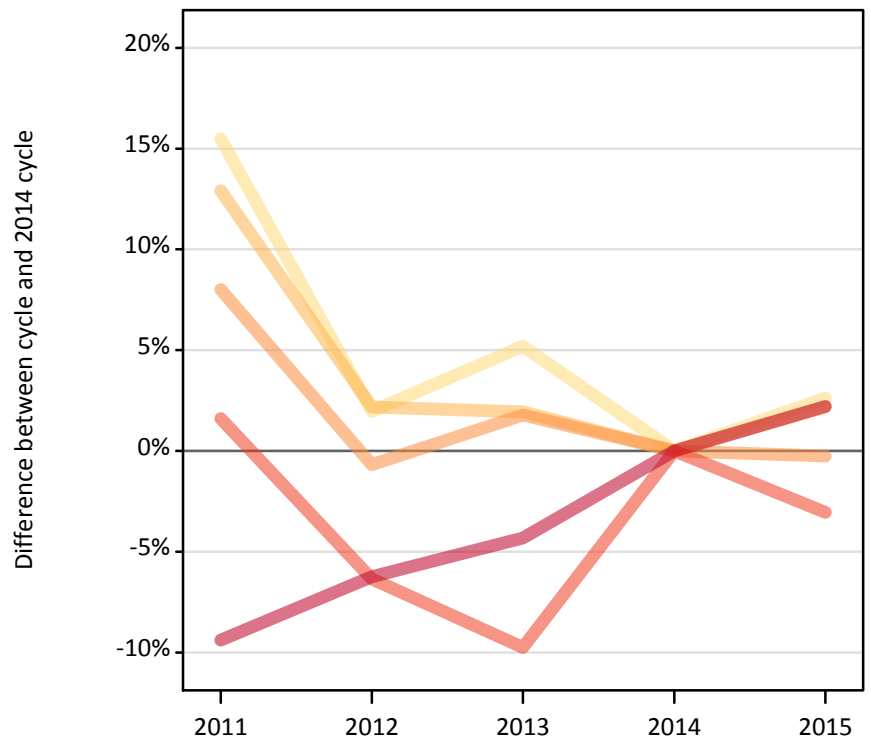
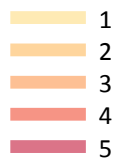
FX.4.12 Applicants by domicile and number of applications made : Northern Ireland

Difference between cycle and 2014 cycle

Domicile and number of applications made by applicant		2011	2012	2013	2014	2015
Northern Ireland	1	-16%	-2%	5%	0%	-3%
	2	1%	1%	12%	0%	2%
	3	-1%	-6%	-2%	0%	7%
	4	2%	3%	6%	0%	7%
	5	-1%	-7%	-1%	0%	1%
	All	-1%	-6%	0%	0%	2%

FX.4.13 Applicants by domicile and number of applications made : Scotland

Difference between cycle and 2014 cycle



FX.4.14 Applicants by domicile and number of applications made : Scotland

Domicile and number of applications made by applicant		2011	2012	2013	2014	2015
Scotland	1	5,580	4,930	5,080	4,830	4,960
	2	3,270	2,960	2,950	2,900	2,960
	3	3,760	3,460	3,550	3,480	3,480
	4	5,210	4,800	4,630	5,130	4,970
	5	23,530	24,350	24,850	25,970	26,540
	All	41,360	40,500	41,060	42,310	42,910

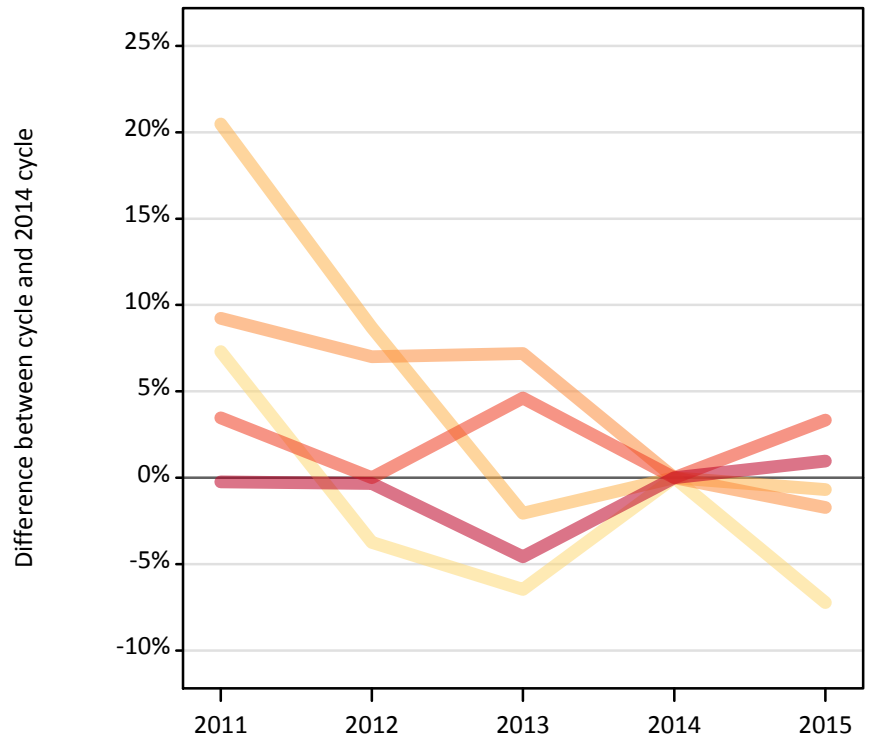
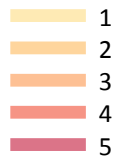
FX.4.15 Applicants by domicile and number of applications made : Scotland

Difference between cycle and 2014 cycle

Domicile and number of applications made by applicant		2011	2012	2013	2014	2015
Scotland	1	15%	2%	5%	0%	3%
	2	13%	2%	2%	0%	2%
	3	8%	-1%	2%	0%	-0%
	4	2%	-6%	-10%	0%	-3%
	5	-9%	-6%	-4%	0%	2%
	All	-2%	-4%	-3%	0%	1%

FX.4.16 Applicants by domicile and number of applications made : Wales

Difference between cycle and 2014 cycle



FX.4.17 Applicants by domicile and number of applications made : Wales

Domicile and number of applications made by applicant		2011	2012	2013	2014	2015
Wales	1	2,590	2,320	2,250	2,410	2,240
	2	1,400	1,260	1,140	1,160	1,150
	3	1,780	1,740	1,740	1,630	1,600
	4	2,600	2,520	2,630	2,520	2,600
	5	14,300	14,290	13,680	14,340	14,480
	All	22,670	22,130	21,450	22,050	22,060

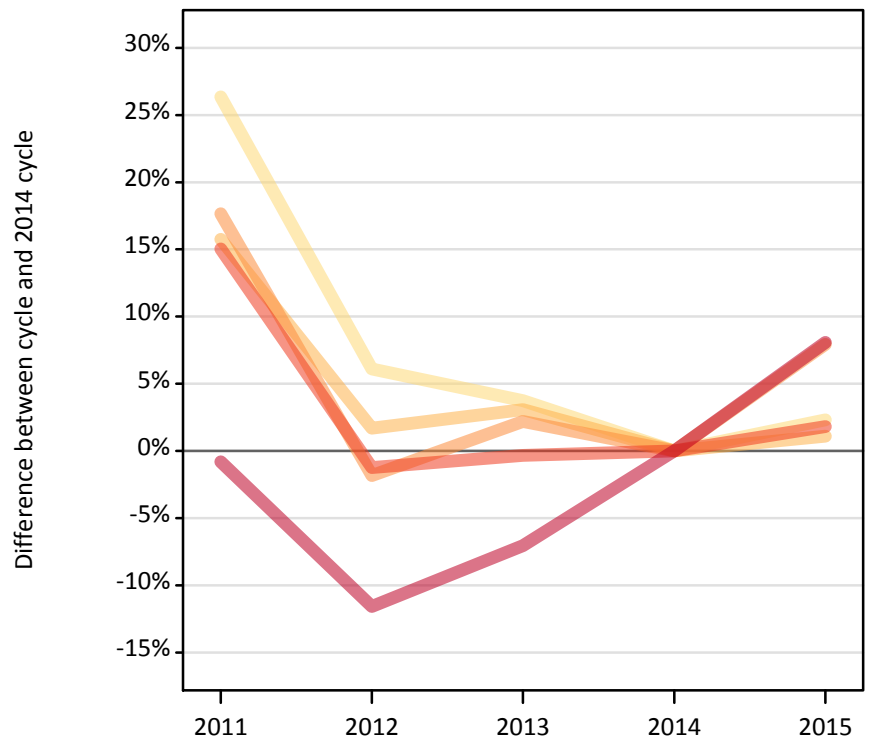
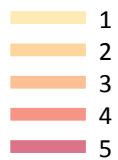
FX.4.18 Applicants by domicile and number of applications made : Wales

Difference between cycle and 2014 cycle

Domicile and number of applications made by applicant		2011	2012	2013	2014	2015
Wales	1	7%	-4%	-6%	0%	-7%
	2	20%	9%	-2%	0%	-1%
	3	9%	7%	7%	0%	-2%
	4	3%	0%	5%	0%	3%
	5	-0%	-0%	-5%	0%	1%
	All	3%	0%	-3%	0%	0%

FX.4.19 Applicants by domicile and number of applications made : EU (excluding UK)

Difference between cycle and 2014 cycle



FX.4.20 Applicants by domicile and number of applications made : EU (excluding UK)

Domicile and number of applications made by applicant		2011	2012	2013	2014	2015
EU (excluding UK)	1	4,240	3,560	3,480	3,360	3,440
	2	1,700	1,490	1,510	1,470	1,480
	3	2,050	1,710	1,780	1,740	1,880
	4	3,890	3,340	3,370	3,380	3,440
	5	31,880	28,410	29,870	32,140	34,740
	All	43,750	38,510	40,010	42,080	44,970

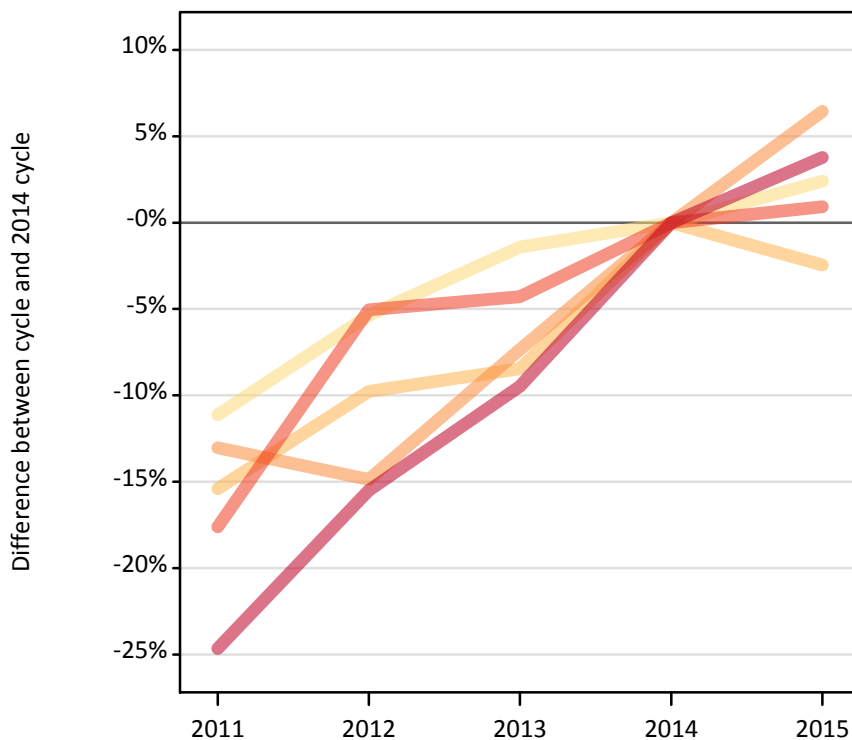
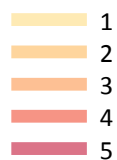
FX.4.21 Applicants by domicile and number of applications made : EU (excluding UK)

Difference between cycle and 2014 cycle

Domicile and number of applications made by applicant		2011	2012	2013	2014	2015
EU (excluding UK)	1	26%	6%	4%	0%	2%
	2	16%	2%	3%	0%	1%
	3	18%	-2%	2%	0%	8%
	4	15%	-1%	-0%	0%	2%
	5	-1%	-12%	-7%	0%	8%
	All	4%	-8%	-5%	0%	7%

FX.4.22 Applicants by domicile and number of applications made : Not EU

Difference between cycle and 2014 cycle



FX.4.23 Applicants by domicile and number of applications made : Not EU

Domicile and number of applications made by applicant		2011	2012	2013	2014	2015
Not EU	1	3,960	4,220	4,400	4,460	4,570
	2	1,550	1,650	1,680	1,830	1,790
	3	2,310	2,260	2,460	2,660	2,830
	4	3,770	4,340	4,380	4,570	4,620
	5	33,510	37,580	40,260	44,480	46,160
	All	45,100	50,060	53,170	58,000	59,950

FX.4.24 Applicants by domicile and number of applications made : Not EU

Difference between cycle and 2014 cycle

Domicile and number of applications made by applicant		2011	2012	2013	2014	2015
Not EU	1	-11%	-5%	-1%	0%	2%
	2	-15%	-10%	-8%	0%	-2%
	3	-13%	-15%	-7%	0%	6%
	4	-18%	-5%	-4%	0%	1%
	5	-25%	-16%	-9%	0%	4%
	All	-22%	-14%	-8%	0%	3%

FX.4.25 Technical notes and definitions

These additional tables have been produced to help comparisons through time, particularly when considering Scottish domiciled applicants and Scottish providers.

In 2015, a set of courses relating to teacher training that historically would only have been available through UCAS Teacher Training, and therefore not previously counted in the scope of this statistical release, were brought into the undergraduate UCAS scheme. These courses are all offered by providers based in Scotland and are in the JACS3 detailed subject reporting grouping of 'X1'. The large majority of applications to these courses are from applicants living in Scotland.

These additional tables exclude any applications made by applicants to subject group 'X1' at Scottish providers and provide a better 'like for like' comparison particularly when considering Scottish domiciled applicants and Scottish providers. The primary deadline applicant statistics which include all applications to Scottish providers are available upon the UCAS website.

Applicants have been able to submit applications for all 2015 courses since early September.

People who submit their applications to UCAS by the January deadline are considered 'on time' applicants for the large majority of courses offered through UCAS. Some art and design courses have a later deadline of 24 March. Almost all main scheme applications have been received by the 24 March deadline.

Counts of the number of applicants reported have been rounded to the nearest 10 applicants, this may result in instances where totals do not equal the sum of the components. Proportional changes have been rounded to the nearest whole percentage point.

Age

This statistical release uses country-specific age definitions which align with the cut off points for school/college cohorts within the different administrations of the UK. For England and Wales ages are defined on the 31 August, for Northern Ireland on the 1 July and for Scotland on the 28 February the following year. Defining ages in this way matches the assignment of children to school cohorts. For applicants outside of the UK the cohort cut off for England and Wales has been used.

Applicant

A person who has made an application in the UCAS system during the cycle reported, this includes those who submit applications for deferred entry. RPAs are excluded.

Application

An application to a course at a provider made by an applicant in the UCAS main scheme. Applicants may make up to five main scheme applications.

Country of provider

An applicant may be counted once for each provider country they have applied to in the main scheme. If an applicant has applied to providers in multiple countries then the applicant is counted once within each country of provider applied to.

This statistical release excludes a small number of applications to a provider based in the EU.

Domicile

Declared area of permanent residence. The Channel Islands and the Isle of Man have been assigned as 'Not EU'.

First time applicant

An applicant that did not apply to the UCAS scheme in the previous cycle.

Main scheme

The main UCAS application scheme through which up to five providers/courses can be applied to. This opens in September and closes to new applications on 30 June the following year.

Reapplicant

An applicant that applied to the UCAS scheme in the previous cycle.

FX.4.26 Technical notes and definitions: continued

Subject group

The JACS3 classification used to classify courses into subject groups.

Tariff group of provider

Providers are grouped as higher, medium or lower tariff based on their average levels of attainment of their accepted applicants (summarised through UCAS Tariff points) in recent cycles. Each group of providers accounted for around a third of all UK 18 year old acceptances in recent cycles.