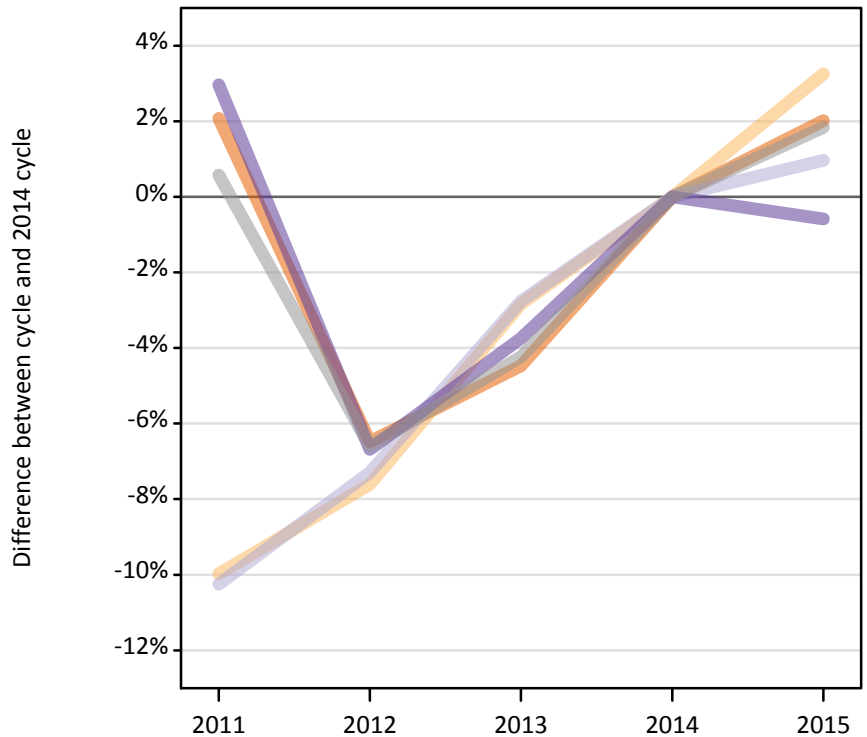
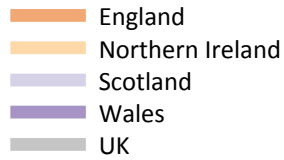


Applications by country and type of provider at the 24 March deadline (No Scot. X1)

FX.5.1 Applications by domicile and country of provider : All domiciles

Difference between cycle and 2014 cycle



FX.5.2 Applications by domicile and country of provider : All domiciles

Domicile of applicant and country of provider		2011	2012	2013	2014	2015
All domiciles	England	2,281,750	2,090,500	2,135,400	2,235,340	2,280,350
	Northern Ireland	55,880	57,350	60,310	62,070	64,090
	Scotland	243,210	251,230	263,490	270,980	273,600
	Wales	106,440	96,460	99,500	103,370	102,770
	UK	2,687,280	2,495,540	2,558,710	2,671,760	2,720,810

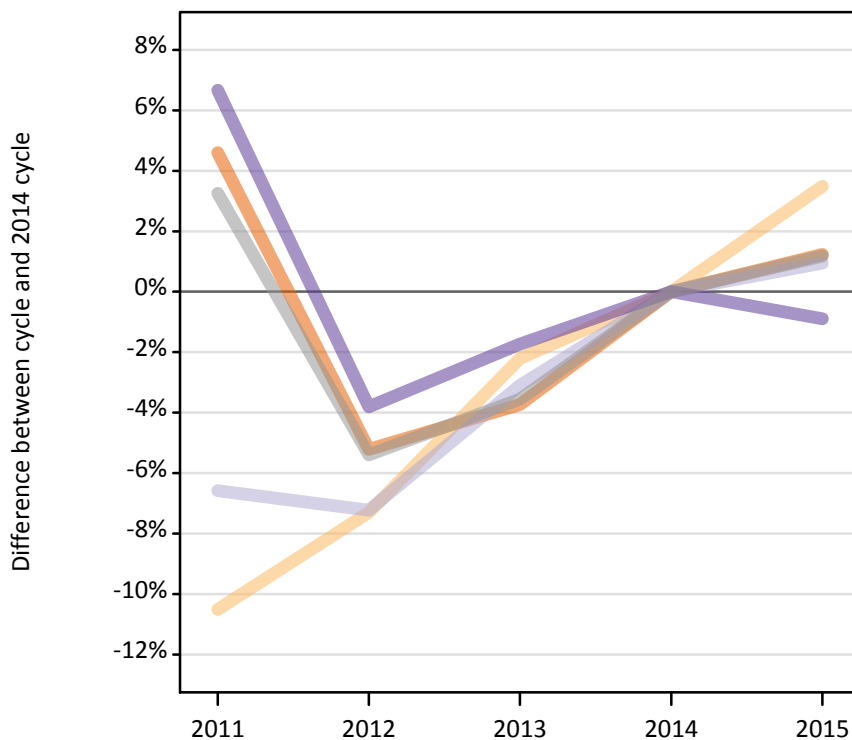
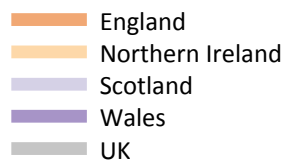
FX.5.3 Applications by domicile and country of provider : All domiciles

Difference between cycle and 2014 cycle

Domicile of applicant and country of provider		2011	2012	2013	2014	2015
All domiciles	England	2%	-6%	-4%	0%	2%
	Northern Ireland	-10%	-8%	-3%	0%	3%
	Scotland	-10%	-7%	-3%	0%	1%
	Wales	3%	-7%	-4%	0%	-1%
	UK	1%	-7%	-4%	0%	2%

FX.5.4 Applications by domicile and country of provider : UK

Difference between cycle and 2014 cycle



FX.5.5 Applications by domicile and country of provider : UK

Domicile of applicant and country of provider		2011	2012	2013	2014	2015
UK	England	1,960,500	1,776,420	1,804,270	1,874,210	1,897,230
	Northern Ireland	51,290	53,130	56,050	57,310	59,310
	Scotland	193,650	192,320	200,870	207,300	209,270
	Wales	96,500	87,020	88,900	90,470	89,660
	UK	2,301,930	2,108,880	2,150,090	2,229,290	2,255,480

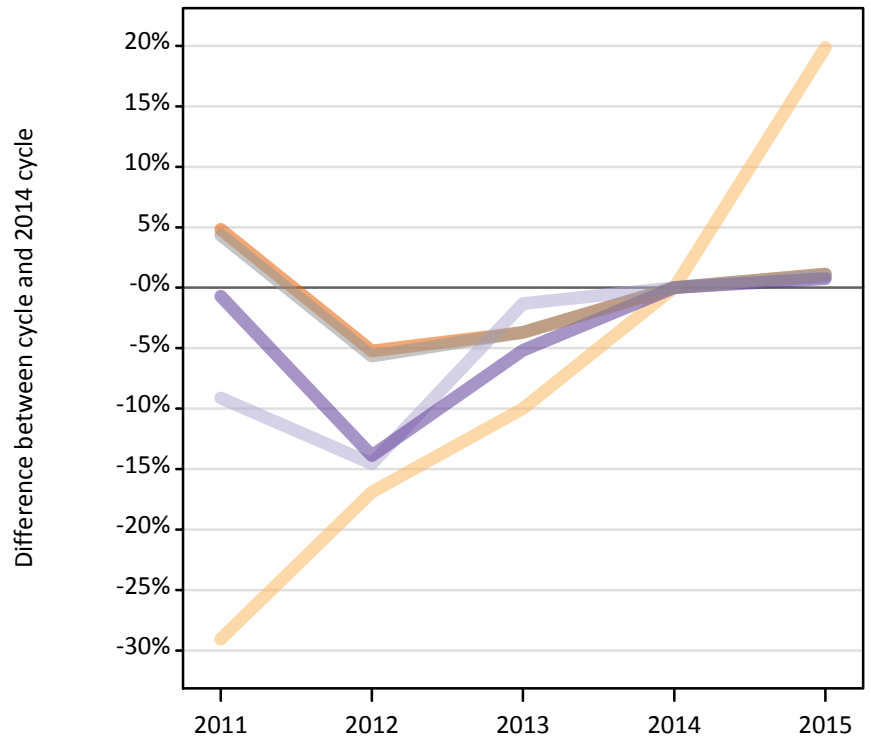
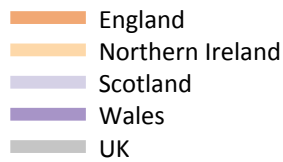
FX.5.6 Applications by domicile and country of provider : UK

Difference between cycle and 2014 cycle

Domicile of applicant and country of provider		2011	2012	2013	2014	2015
UK	England	5%	-5%	-4%	0%	1%
	Northern Ireland	-11%	-7%	-2%	0%	3%
	Scotland	-7%	-7%	-3%	0%	1%
	Wales	7%	-4%	-2%	0%	-1%
	UK	3%	-5%	-4%	0%	1%

FX.5.7 Applications by domicile and country of provider : England

Difference between cycle and 2014 cycle



FX.5.8 Applications by domicile and country of provider : England

Domicile of applicant and country of provider		2011	2012	2013	2014	2015
England	England	1,873,830	1,694,450	1,721,870	1,787,730	1,807,580
	Northern Ireland	1,890	2,220	2,400	2,670	3,200
	Scotland	32,690	30,740	35,500	35,970	36,310
	Wales	49,960	43,340	47,720	50,320	50,700
	UK	1,958,380	1,770,740	1,807,480	1,876,680	1,897,790

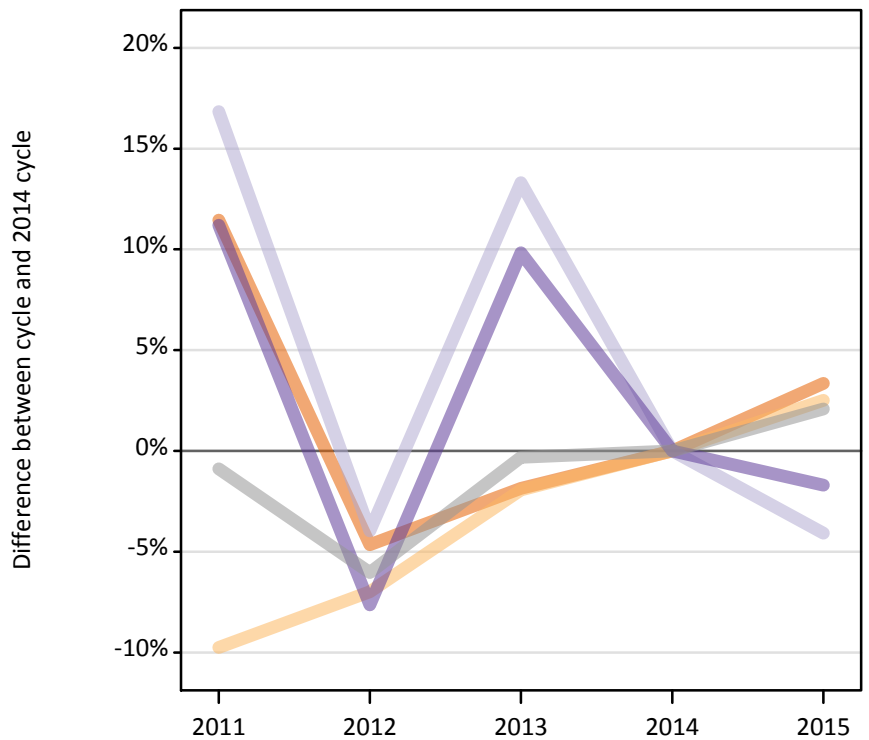
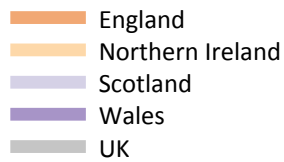
FX.5.9 Applications by domicile and country of provider : England

Difference between cycle and 2014 cycle

Domicile of applicant and country of provider		2011	2012	2013	2014	2015
England	England	5%	-5%	-4%	0%	1%
	Northern Ireland	-29%	-17%	-10%	0%	20%
	Scotland	-9%	-15%	-1%	0%	1%
	Wales	-1%	-14%	-5%	0%	1%
	UK	4%	-6%	-4%	0%	1%

FX.5.10 Applications by domicile and country of provider : Northern Ireland

Difference between cycle and 2014 cycle



FX.5.11 Applications by domicile and country of provider : Northern Ireland

Domicile of applicant and country of provider		2011	2012	2013	2014	2015
Northern Ireland	England	28,680	24,540	25,260	25,730	26,590
	Northern Ireland	49,110	50,620	53,370	54,420	55,780
	Scotland	9,910	8,140	9,610	8,480	8,130
	Wales	1,310	1,090	1,300	1,180	1,160
	UK	89,000	84,380	89,520	89,800	91,670

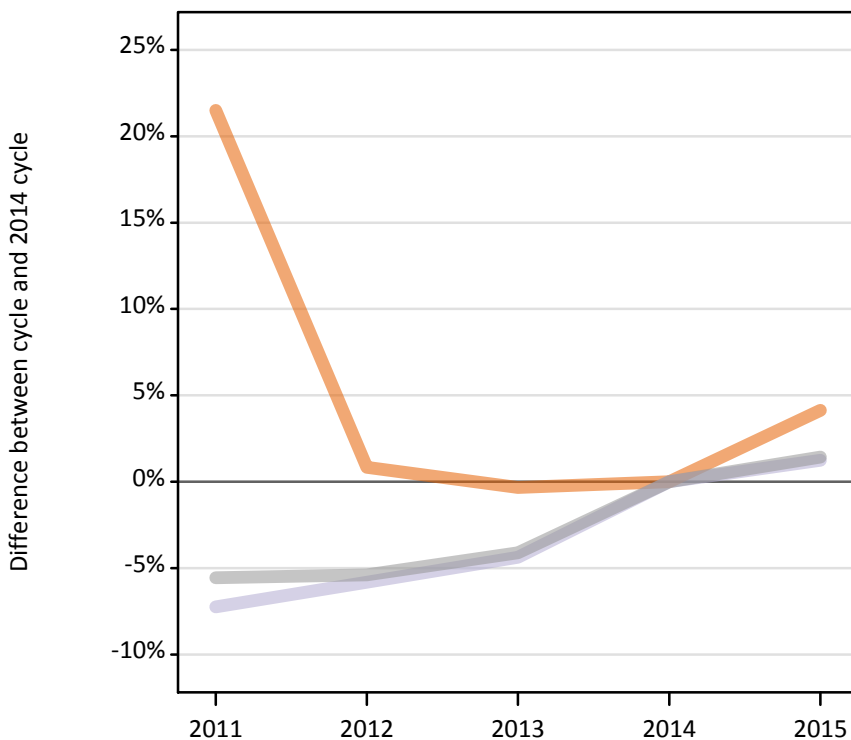
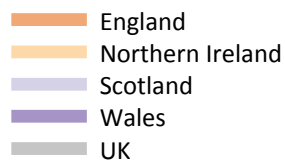
FX.5.12 Applications by domicile and country of provider : Northern Ireland

Difference between cycle and 2014 cycle

Domicile of applicant and country of provider		2011	2012	2013	2014	2015
Northern Ireland	England	11%	-5%	-2%	0%	3%
	Northern Ireland	-10%	-7%	-2%	0%	3%
	Scotland	17%	-4%	13%	0%	-4%
	Wales	11%	-8%	10%	0%	-2%
	UK	-1%	-6%	-0%	0%	2%

FX.5.13 Applications by domicile and country of provider : Scotland

Difference between cycle and 2014 cycle



FX.5.14 Applications by domicile and country of provider : Scotland

Domicile of applicant and country of provider		2011	2012	2013	2014	2015
Scotland	England	11,290	9,370	9,260	9,290	9,680
	Northern Ireland	210	200	200	140	220
	Scotland	150,050	152,380	154,720	161,780	163,780
	Wales	370	240	220	230	230
	UK	161,920	162,190	164,400	171,450	173,910

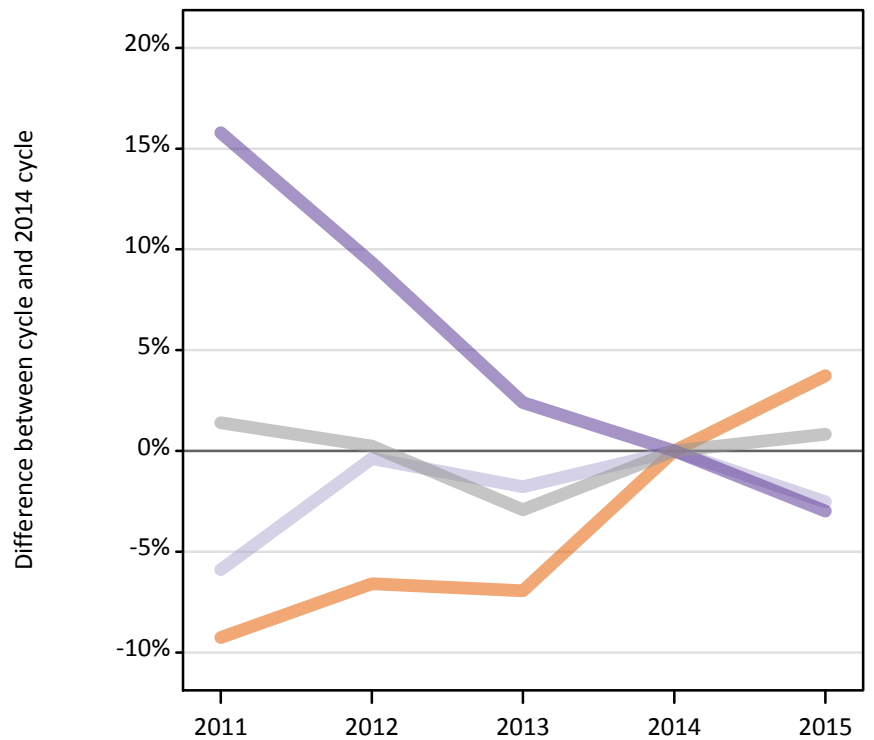
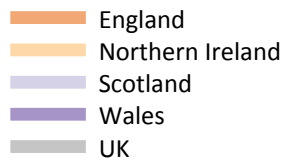
FX.5.15 Applications by domicile and country of provider : Scotland

Difference between cycle and 2014 cycle

Domicile of applicant and country of provider		2011	2012	2013	2014	2015
Scotland	England	22%	1%	-0%	0%	4%
	Northern Ireland	50%	44%	39%	0%	57%
	Scotland	-7%	-6%	-4%	0%	1%
	Wales	59%	5%	-3%	0%	-2%
	UK	-6%	-5%	-4%	0%	1%

FX.5.16 Applications by domicile and country of provider : Wales

Difference between cycle and 2014 cycle



FX.5.17 Applications by domicile and country of provider : Wales

Domicile of applicant and country of provider		2011	2012	2013	2014	2015
Wales	England	46,690	48,070	47,890	51,460	53,380
	Northern Ireland	80	90	90	90	110
	Scotland	1,010	1,070	1,050	1,070	1,040
	Wales	44,850	42,350	39,660	38,740	37,580
	UK	92,630	91,570	88,690	91,360	92,110

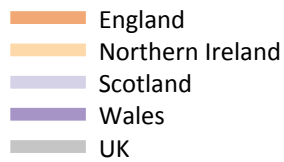
FX.5.18 Applications by domicile and country of provider : Wales

Difference between cycle and 2014 cycle

Domicile of applicant and country of provider		2011	2012	2013	2014	2015
Wales	England	-9%	-7%	-7%	0%	4%
	Northern Ireland	-16%	2%	-3%	0%	23%
	Scotland	-6%	-0%	-2%	0%	-3%
	Wales	16%	9%	2%	0%	-3%
	UK	1%	0%	-3%	0%	1%

FX.5.19 Applications by domicile and country of provider : EU (excluding UK)

Difference between cycle and 2014 cycle



FX.5.20 Applications by domicile and country of provider : EU (excluding UK)

Domicile of applicant and country of provider		2011	2012	2013	2014	2015
EU (excluding UK)	England	144,710	117,830	122,290	132,980	146,740
	Northern Ireland	3,910	3,450	3,420	3,540	3,310
	Scotland	35,370	41,700	44,450	44,110	43,980
	Wales	4,730	4,100	4,510	5,080	5,440
	UK	188,720	167,080	174,670	185,710	199,470

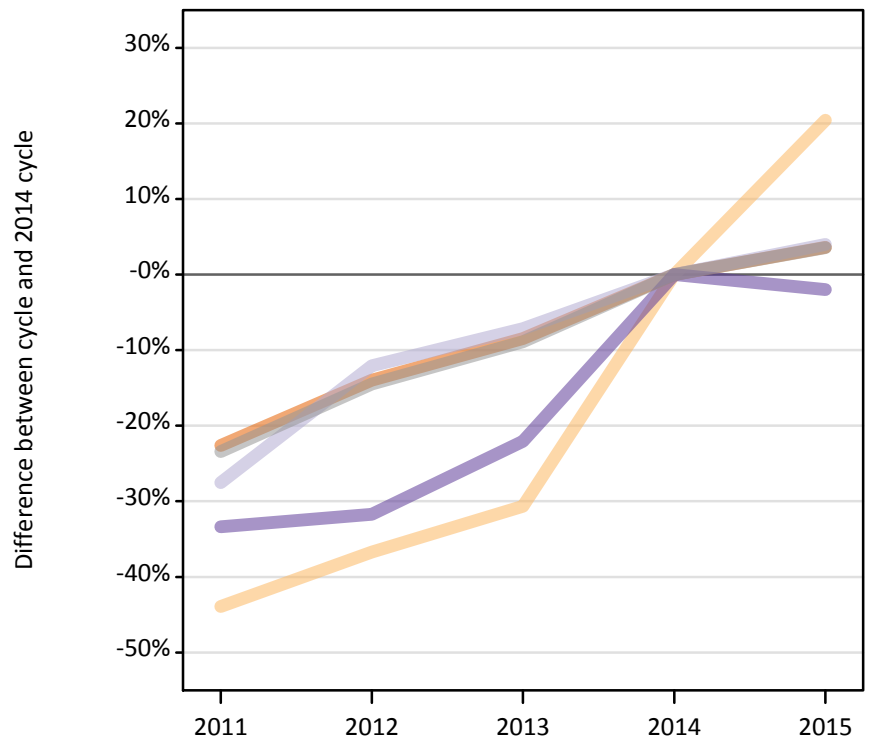
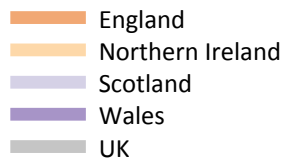
FX.5.21 Applications by domicile and country of provider : EU (excluding UK)

Difference between cycle and 2014 cycle

Domicile of applicant and country of provider		2011	2012	2013	2014	2015
EU (excluding UK)	England	9%	-11%	-8%	0%	10%
	Northern Ireland	10%	-2%	-3%	0%	-7%
	Scotland	-20%	-5%	1%	0%	-0%
	Wales	-7%	-19%	-11%	0%	7%
	UK	2%	-10%	-6%	0%	7%

FX.5.22 Applications by domicile and country of provider : Not EU

Difference between cycle and 2014 cycle



FX.5.23 Applications by domicile and country of provider : Not EU

Domicile of applicant and country of provider		2011	2012	2013	2014	2015
Not EU	England	176,550	196,240	208,840	228,150	236,370
	Northern Ireland	680	770	850	1,220	1,470
	Scotland	14,190	17,210	18,170	19,570	20,350
	Wales	5,210	5,340	6,100	7,820	7,670
	UK	196,630	219,570	233,950	256,760	265,870

FX.5.24 Applications by domicile and country of provider : Not EU

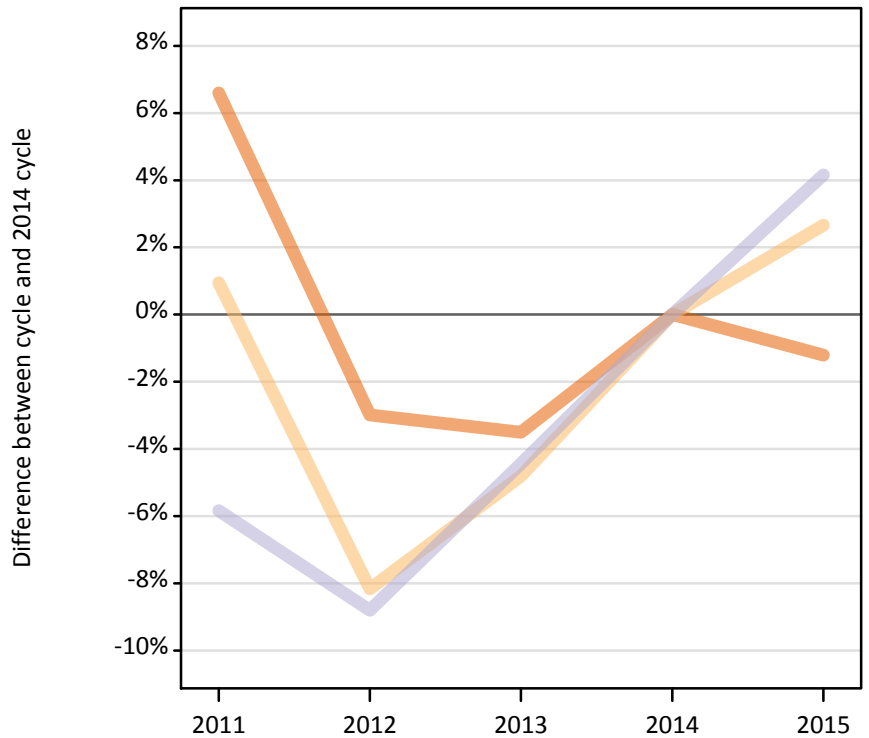
Difference between cycle and 2014 cycle

Domicile of applicant and country of provider		2011	2012	2013	2014	2015
Not EU	England	-23%	-14%	-8%	0%	4%
	Northern Ireland	-44%	-37%	-31%	0%	20%
	Scotland	-28%	-12%	-7%	0%	4%
	Wales	-33%	-32%	-22%	0%	-2%
	UK	-23%	-14%	-9%	0%	4%

FX.5.25 Applications by domicile and tariff group of provider : All domiciles

Difference between cycle and 2014 cycle

- 1. Lower tariff
- 2. Medium tariff
- 3. Higher tariff



FX.5.26 Applications by domicile and tariff group of provider : All domiciles

Domicile of applicant and tariff group of provider		2011	2012	2013	2014	2015
All domiciles	1. Lower tariff	983,290	894,900	890,180	922,450	911,290
	2. Medium tariff	845,020	768,730	796,780	837,070	859,330
	3. Higher tariff	858,970	831,910	871,760	912,240	950,200
	All	2,687,280	2,495,540	2,558,710	2,671,760	2,720,810

FX.5.27 Applications by domicile and tariff group of provider : All domiciles

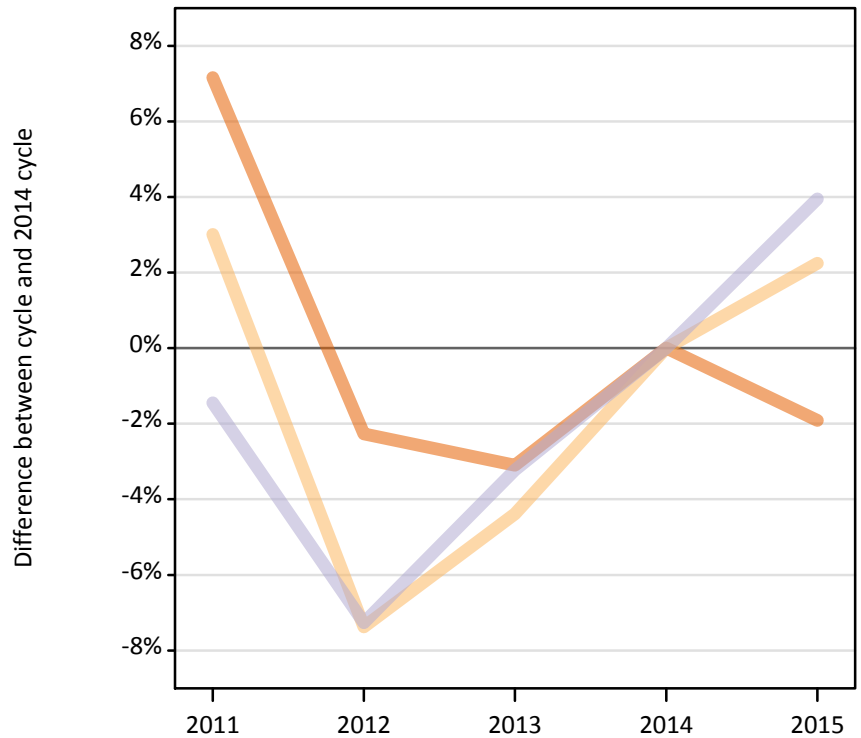
Difference between cycle and 2014 cycle

Domicile of applicant and tariff group of provider		2011	2012	2013	2014	2015
All domiciles	1. Lower tariff	7%	-3%	-3%	0%	-1%
	2. Medium tariff	1%	-8%	-5%	0%	3%
	3. Higher tariff	-6%	-9%	-4%	0%	4%
	All	1%	-7%	-4%	0%	2%

FX.5.28 Applications by domicile and tariff group of provider : UK

Difference between cycle and 2014 cycle

- 1. Lower tariff
- 2. Medium tariff
- 3. Higher tariff



FX.5.29 Applications by domicile and tariff group of provider : UK

Domicile of applicant and tariff group of provider		2011	2012	2013	2014	2015
UK	1. Lower tariff	908,010	828,170	821,100	847,370	831,180
	2. Medium tariff	740,190	665,550	687,060	718,580	734,740
	3. Higher tariff	653,730	615,160	641,930	663,340	689,550
	All	2,301,930	2,108,880	2,150,090	2,229,290	2,255,480

FX.5.30 Applications by domicile and tariff group of provider : UK

Difference between cycle and 2014 cycle

Domicile of applicant and tariff group of provider		2011	2012	2013	2014	2015
UK	1. Lower tariff	7%	-2%	-3%	0%	-2%
	2. Medium tariff	3%	-7%	-4%	0%	2%
	3. Higher tariff	-1%	-7%	-3%	0%	4%
	All	3%	-5%	-4%	0%	1%

FX.5.31 Applications by domicile and tariff group of provider : England

Difference between cycle and 2014 cycle

- 1. Lower tariff
- 2. Medium tariff
- 3. Higher tariff



FX.5.32 Applications by domicile and tariff group of provider : England

Domicile of applicant and tariff group of provider		2011	2012	2013	2014	2015
England	1. Lower tariff	822,270	743,940	740,890	765,050	748,630
	2. Medium tariff	605,560	531,620	546,910	570,950	585,110
	3. Higher tariff	530,560	495,170	519,690	540,680	564,050
	All	1,958,380	1,770,740	1,807,480	1,876,680	1,897,790

FX.5.33 Applications by domicile and tariff group of provider : England

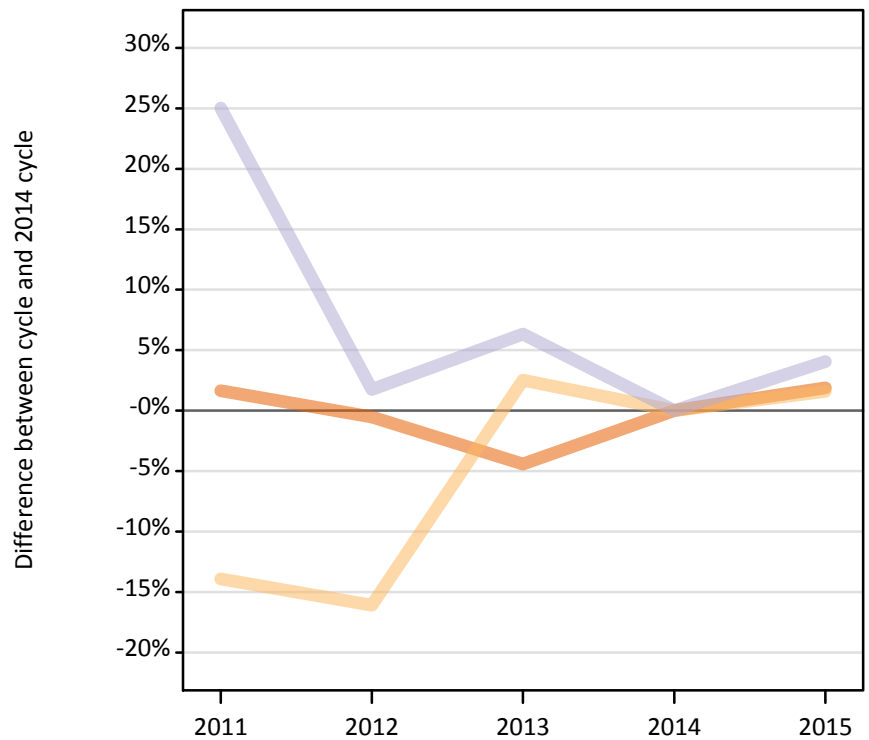
Difference between cycle and 2014 cycle

Domicile of applicant and tariff group of provider		2011	2012	2013	2014	2015
England	1. Lower tariff	7%	-3%	-3%	0%	-2%
	2. Medium tariff	6%	-7%	-4%	0%	2%
	3. Higher tariff	-2%	-8%	-4%	0%	4%
	All	4%	-6%	-4%	0%	1%

FX.5.34 Applications by domicile and tariff group of provider : Northern Ireland

Difference between cycle and 2014 cycle

- 1. Lower tariff
- 2. Medium tariff
- 3. Higher tariff



FX.5.35 Applications by domicile and tariff group of provider : Northern Ireland

Domicile of applicant and tariff group of provider		2011	2012	2013	2014	2015
Northern Ireland	1. Lower tariff	44,220	43,270	41,570	43,500	44,310
	2. Medium tariff	28,960	28,230	34,490	33,650	34,190
	3. Higher tariff	15,830	12,880	13,460	12,660	13,170
	All	89,000	84,380	89,520	89,800	91,670

FX.5.36 Applications by domicile and tariff group of provider : Northern Ireland

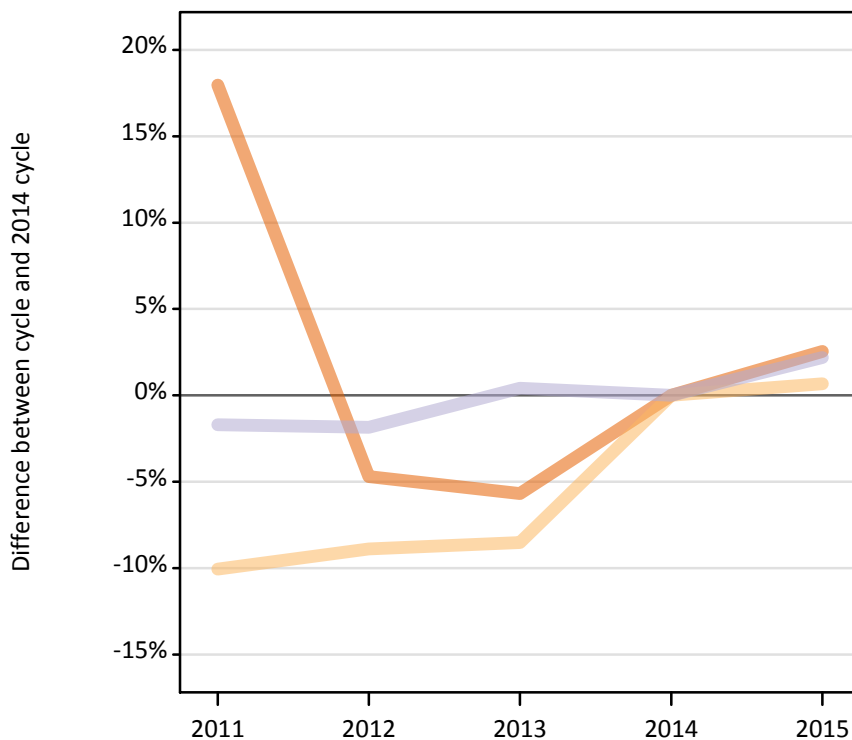
Difference between cycle and 2014 cycle

Domicile of applicant and tariff group of provider		2011	2012	2013	2014	2015
Northern Ireland	1. Lower tariff	2%	-1%	-4%	0%	2%
	2. Medium tariff	-14%	-16%	3%	0%	2%
	3. Higher tariff	25%	2%	6%	0%	4%
	All	-1%	-6%	-0%	0%	2%

FX.5.37 Applications by domicile and tariff group of provider : Scotland

Difference between cycle and 2014 cycle

- 1. Lower tariff
- 2. Medium tariff
- 3. Higher tariff



FX.5.38 Applications by domicile and tariff group of provider : Scotland

Domicile of applicant and tariff group of provider		2011	2012	2013	2014	2015
Scotland	1. Lower tariff	3,050	2,470	2,440	2,590	2,660
	2. Medium tariff	76,620	77,600	77,930	85,180	85,750
	3. Higher tariff	82,250	82,120	84,020	83,670	85,510
	All	161,920	162,190	164,400	171,450	173,910

FX.5.39 Applications by domicile and tariff group of provider : Scotland

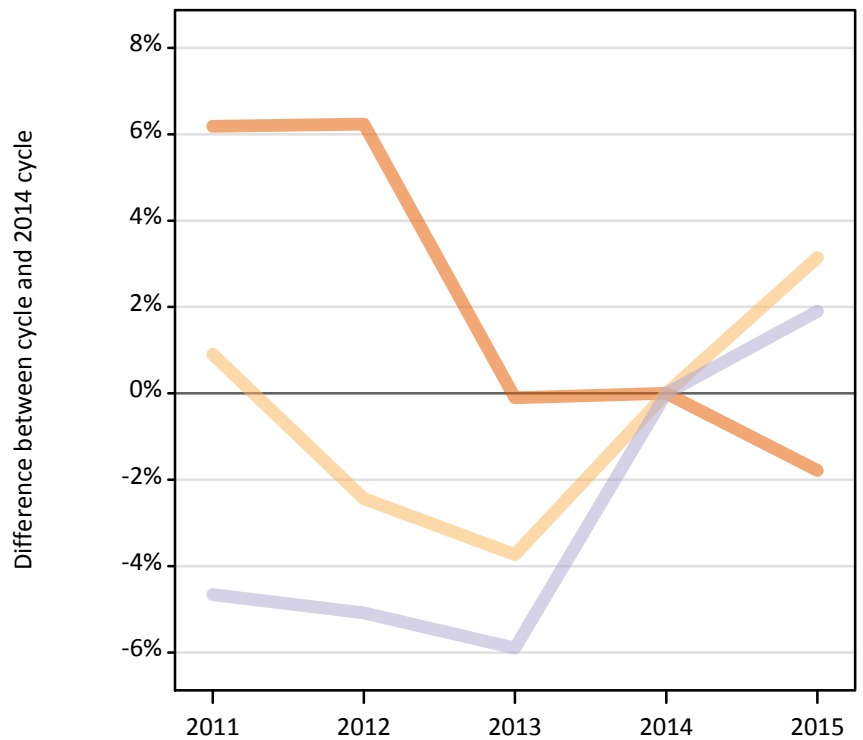
Difference between cycle and 2014 cycle

Domicile of applicant and tariff group of provider		2011	2012	2013	2014	2015
Scotland	1. Lower tariff	18%	-5%	-6%	0%	3%
	2. Medium tariff	-10%	-9%	-9%	0%	1%
	3. Higher tariff	-2%	-2%	0%	0%	2%
	All	-6%	-5%	-4%	0%	1%

FX.5.40 Applications by domicile and tariff group of provider : Wales

Difference between cycle and 2014 cycle

- 1. Lower tariff
- 2. Medium tariff
- 3. Higher tariff



FX.5.41 Applications by domicile and tariff group of provider : Wales

Domicile of applicant and tariff group of provider		2011	2012	2013	2014	2015
Wales	1. Lower tariff	38,480	38,500	36,200	36,240	35,590
	2. Medium tariff	29,060	28,100	27,720	28,800	29,700
	3. Higher tariff	25,090	24,980	24,770	26,320	26,820
	All	92,630	91,570	88,690	91,360	92,110

FX.5.42 Applications by domicile and tariff group of provider : Wales

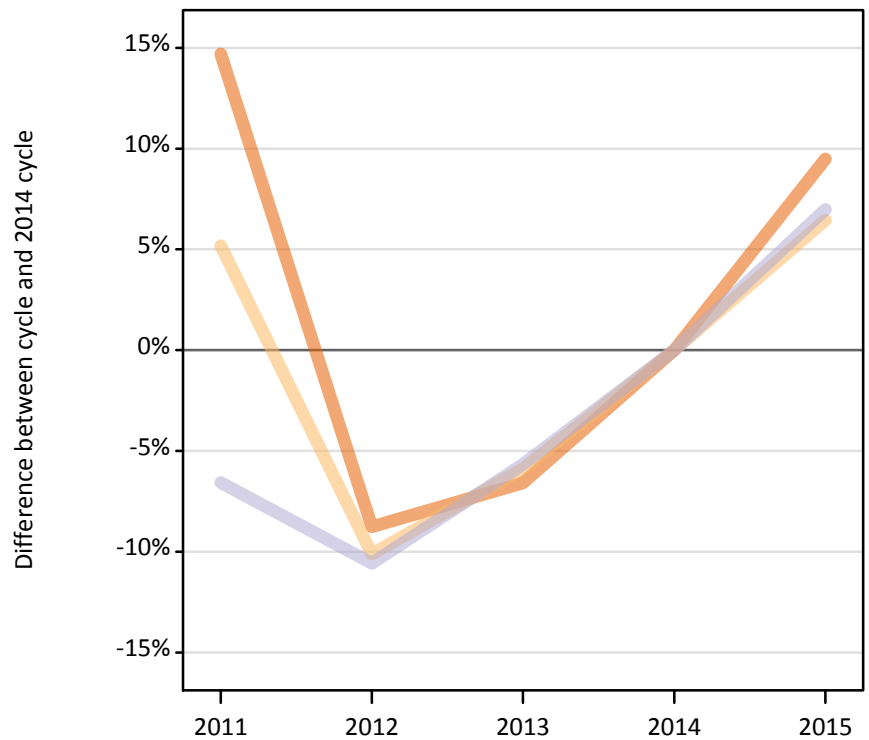
Difference between cycle and 2014 cycle

Domicile of applicant and tariff group of provider		2011	2012	2013	2014	2015
Wales	1. Lower tariff	6%	6%	-0%	0%	-2%
	2. Medium tariff	1%	-2%	-4%	0%	3%
	3. Higher tariff	-5%	-5%	-6%	0%	2%
	All	1%	0%	-3%	0%	1%

FX.5.43 Applications by domicile and tariff group of provider : EU (excluding UK)

Difference between cycle and 2014 cycle

- 1. Lower tariff
- 2. Medium tariff
- 3. Higher tariff



FX.5.44 Applications by domicile and tariff group of provider : EU (excluding UK)

Domicile of applicant and tariff group of provider		2011	2012	2013	2014	2015
EU (excluding UK)	1. Lower tariff	49,010	38,990	39,920	42,730	46,780
	2. Medium tariff	54,800	46,830	49,030	52,100	55,460
	3. Higher tariff	84,910	81,270	85,730	90,880	97,230
	All	188,720	167,080	174,670	185,710	199,470

FX.5.45 Applications by domicile and tariff group of provider : EU (excluding UK)

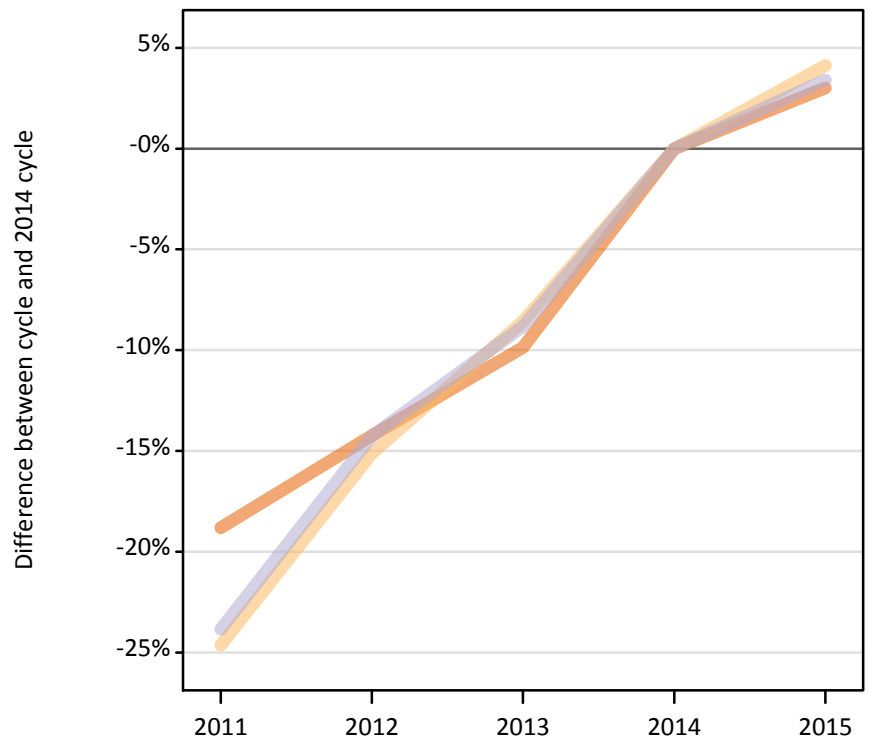
Difference between cycle and 2014 cycle

Domicile of applicant and tariff group of provider		2011	2012	2013	2014	2015
EU (excluding UK)	1. Lower tariff	15%	-9%	-7%	0%	9%
	2. Medium tariff	5%	-10%	-6%	0%	6%
	3. Higher tariff	-7%	-11%	-6%	0%	7%
	All	2%	-10%	-6%	0%	7%

FX.5.46 Applications by domicile and tariff group of provider : Not EU

Difference between cycle and 2014 cycle

- 1. Lower tariff
- 2. Medium tariff
- 3. Higher tariff



FX.5.47 Applications by domicile and tariff group of provider : Not EU

Domicile of applicant and tariff group of provider		2011	2012	2013	2014	2015
Not EU	1. Lower tariff	26,270	27,740	29,160	32,350	33,320
	2. Medium tariff	50,030	56,340	60,700	66,390	69,120
	3. Higher tariff	120,340	135,490	144,100	158,030	163,420
	All	196,630	219,570	233,950	256,760	265,870

FX.5.48 Applications by domicile and tariff group of provider : Not EU

Difference between cycle and 2014 cycle

Domicile of applicant and tariff group of provider		2011	2012	2013	2014	2015
Not EU	1. Lower tariff	-19%	-14%	-10%	0%	3%
	2. Medium tariff	-25%	-15%	-9%	0%	4%
	3. Higher tariff	-24%	-14%	-9%	0%	3%
	All	-23%	-14%	-9%	0%	4%

FX.5.49 Technical notes and definitions

These additional tables have been produced to help comparisons through time, particularly when considering Scottish domiciled applicants and Scottish providers.

In 2015, a set of courses relating to teacher training that historically would only have been available through UCAS Teacher Training, and therefore not previously counted in the scope of this statistical release, were brought into the undergraduate UCAS scheme. These courses are all offered by providers based in Scotland and are in the JACS3 detailed subject reporting grouping of 'X1'. The large majority of applications to these courses are from applicants living in Scotland.

These additional tables exclude any applications made by applicants to subject group 'X1' at Scottish providers and provide a better 'like for like' comparison particularly when considering Scottish domiciled applicants and Scottish providers. The primary deadline applicant statistics which include all applications to Scottish providers are available upon the UCAS website.

Applicants have been able to submit applications for all 2015 courses since early September.

People who submit their applications to UCAS by the January deadline are considered 'on time' applicants for the large majority of courses offered through UCAS. Some art and design courses have a later deadline of 24 March. Almost all main scheme applications have been received by the 24 March deadline.

Counts of the number of applicants reported have been rounded to the nearest 10 applicants, this may result in instances where totals do not equal the sum of the components. Proportional changes have been rounded to the nearest whole percentage point.

Age

This statistical release uses country-specific age definitions which align with the cut off points for school/college cohorts within the different administrations of the UK. For England and Wales ages are defined on the 31 August, for Northern Ireland on the 1 July and for Scotland on the 28 February the following year. Defining ages in this way matches the assignment of children to school cohorts. For applicants outside of the UK the cohort cut off for England and Wales has been used.

Applicant

A person who has made an application in the UCAS system during the cycle reported, this includes those who submit applications for deferred entry. RPAs are excluded.

Application

An application to a course at a provider made by an applicant in the UCAS main scheme. Applicants may make up to five main scheme applications.

Country of provider

An applicant may be counted once for each provider country they have applied to in the main scheme. If an applicant has applied to providers in multiple countries then the applicant is counted once within each country of provider applied to.

This statistical release excludes a small number of applications to a provider based in the EU.

Domicile

Declared area of permanent residence. The Channel Islands and the Isle of Man have been assigned as 'Not EU'.

First time applicant

An applicant that did not apply to the UCAS scheme in the previous cycle.

Main scheme

The main UCAS application scheme through which up to five providers/courses can be applied to. This opens in September and closes to new applications on 30 June the following year.

Reapplicant

An applicant that applied to the UCAS scheme in the previous cycle.

FX.5.50 Technical notes and definitions: continued

Subject group

The JACS3 classification used to classify courses into subject groups.

Tariff group of provider

Providers are grouped as higher, medium or lower tariff based on their average levels of attainment of their accepted applicants (summarised through UCAS Tariff points) in recent cycles. Each group of providers accounted for around a third of all UK 18 year old acceptances in recent cycles.