

Lower tariff providers

Cycle years: 2012 - 2017

Cycle Reference Point: End of Cycle

Applicant coverage: UK domiciled

Reporting groups: Sex, POLAR3, ethnic group

Applicant statistics: June deadline applicants, placed June deadline applicants, all placed applicants, June deadline applicants per 10,000 population, placed June deadline applicants per 10,000 population, all placed applicants per 10,000 population

Application statistics: June deadline applications, offers, offer rate, average offer rate, percentage point difference between offer rate and average offer rate, contribution of group to the average offer rate

Non-disclosure controls: To avoid the disclosure of information about any individual the following measures are taken

- Applicants, placed applicants, applications and offers are rounded to the nearest 5.
- Applicants/placed applicants per 10,000 population figures are reported as 0 if the applicant/placed applicant figures are rounded to 0.
- All statistics related to the offer rate are not reported when the number of applications for a group is less than 10. The percentage point difference between the offer rate and the average offer rate is not reported when the number of applications for a group is less than 50.
- Offer rates are reported as 0% if there are fewer than 5 offers, and 100% if the number of offers is within 5 of the number of applications. When the offer rate is reported as 0% or 100%, it is reported in italics.

Contents:

18 year old applicants:	P.1
18 year old applications:	P.2
18 year old applicants by sex:	P.3
18 year old applications by sex:	P.4
18 year old applicants by POLAR3 quintile:	P.7
18 year old applications by POLAR3 quintile:	P.8
18 year old applicants by ethnic group:	P.11
18 year old applications by ethnic group:	P.12
Applicants (all ages):	P.15
Applications (all ages):	P.16
Applicants (all ages) by sex:	P.17
Applications (all ages) by sex:	P.18
Applicants (all ages) by POLAR3 quintile:	P.19
Applications (all ages) by POLAR3 quintile:	P.20
Applicants (all ages) by ethnic group:	P.21
Applications (all ages) by ethnic group:	P.22

P.1 18 year old applicants

Statistic	2012	2013	2014	2015	2016	2017
June deadline applicants	151,175	150,550	158,160	163,455	162,160	159,830
Placed June deadline applicants	61,345	63,600	65,235	67,655	66,080	64,200
All placed applicants	75,505	77,675	80,015	82,595	80,405	78,650
June deadline applicants per 10,000 population	1,954.4	1,978.4	2,100.0	2,133.5	2,163.4	2,157.2
Placed June deadline applicants per 10,000	793.1	835.8	866.2	883.1	881.6	866.5
All placed applicants per 10,000 population	976.2	1,020.7	1,062.4	1,078.1	1,072.7	1,061.6

P.2 18 year old applications

Statistic	2012	2013	2014	2015	2016	2017
June deadline applications	400,500	393,460	404,080	410,265	397,150	379,560
Offers	292,215	306,360	317,740	326,425	317,910	310,770
Offer rate	73.0%	77.9%	78.6%	79.6%	80.0%	81.9%

P.3 18 year old applicants by sex

Statistic	Sex	2012	2013	2014	2015	2016	2017
June deadline applicants	Men	62,095	62,260	65,865	66,995	66,970	65,805
	Women	89,080	88,290	92,295	96,460	95,190	94,025
Placed June deadline applicants	Men	25,445	27,000	27,830	28,560	27,950	26,610
	Women	35,900	36,605	37,410	39,100	38,130	37,585
All placed applicants	Men	31,530	32,845	34,055	34,725	33,750	32,580
	Women	43,975	44,830	45,960	47,870	46,655	46,075
June deadline applicants per 10,000 population	Men	1,565.7	1,594.7	1,701.4	1,707.2	1,743.3	1,732.5
	Women	2,363.4	2,382.5	2,521.4	2,581.2	2,605.1	2,604.1
Placed June deadline applicants per 10,000 population	Men	641.6	691.5	718.9	727.7	727.5	700.6
	Women	952.4	987.8	1,021.9	1,046.2	1,043.5	1,041.0
All placed applicants per 10,000 population	Men	795.1	841.3	879.7	884.9	878.5	857.7
	Women	1,166.6	1,209.8	1,255.6	1,280.9	1,276.8	1,276.0

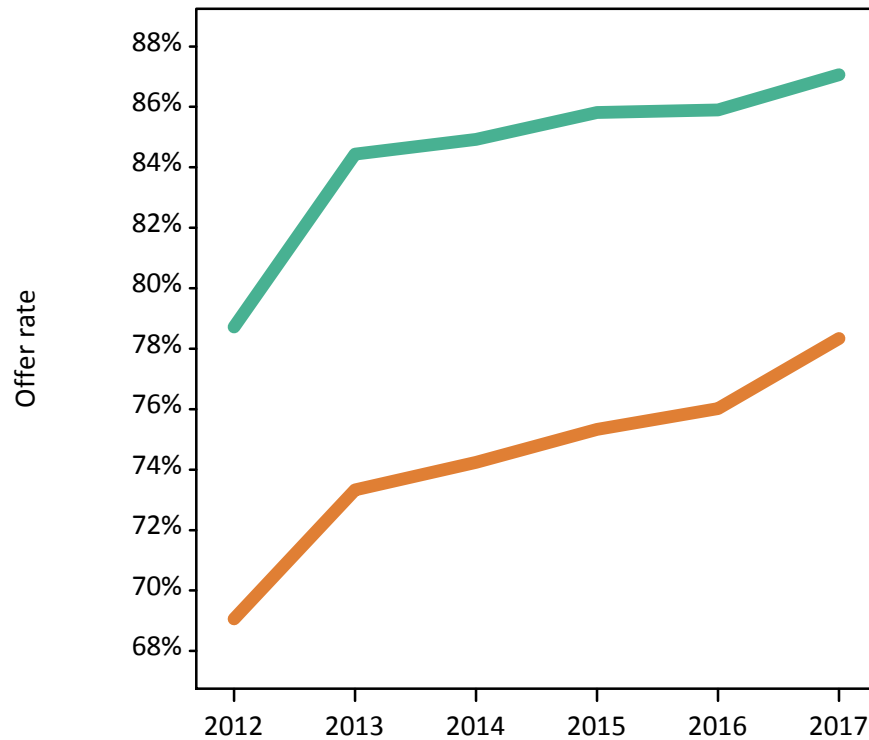
P.4 18 year old applications by sex

Statistic	Sex	2012	2013	2014	2015	2016	2017
June deadline applications	Men	161,700	160,540	166,160	165,725	162,005	153,680
	Women	238,800	232,920	237,915	244,545	235,145	225,880
Offers	Men	127,295	135,555	141,110	142,215	139,155	133,810
	Women	164,925	170,810	176,630	184,210	178,750	176,960
Offer rate	Men	78.7%	84.4%	84.9%	85.8%	85.9%	87.1%
	Women	69.1%	73.3%	74.2%	75.3%	76.0%	78.3%
Average offer rate	Men	79.0%	84.5%	85.1%	86.0%	86.1%	87.1%
	Women	68.9%	73.3%	74.1%	75.2%	75.9%	78.3%
Percentage point difference between offer rate and average offer rate	Men	-0.3	-0.1	-0.2	-0.2	-0.2	-0.1
	Women	0.2	0.1	0.1	0.1	0.1	0.1
Contribution of group to the average offer rate	Men	0.609	0.622	0.628	0.623	0.623	0.624
	Women	0.735	0.739	0.740	0.744	0.740	0.744

P.5 18 year old offer rate by sex

Note: The line for a group is not plotted when that group made fewer than 10 applications in any of the years from 2012-2017.

Men
Women



P.6 Percentage point difference between 18 year old offer rate and average offer rate by sex

Note: The line for a group is not plotted when that group made fewer than 50 applications in any of the years from 2012-2017.

Men
Women



P.7 18 year old applicants by POLAR3 quintile

Statistic	POLAR3 quintile	2012	2013	2014	2015	2016	2017
June deadline applicants	Quintile 1	20,230	20,510	22,740	23,555	23,390	23,065
	Quintile 2	27,215	27,605	29,550	30,665	30,610	29,925
	Quintile 3	32,375	32,340	34,090	35,310	34,935	34,415
	Quintile 4	34,800	34,610	35,650	36,900	36,330	35,870
	Quintile 5	36,300	35,235	35,840	36,735	36,575	36,145
Placed June deadline applicants	Quintile 1	9,080	9,625	10,290	10,580	10,325	9,965
	Quintile 2	11,915	12,485	13,030	13,405	13,235	12,875
	Quintile 3	13,510	14,080	14,445	15,140	14,620	14,375
	Quintile 4	13,635	14,165	14,310	14,810	14,405	13,975
	Quintile 5	13,105	13,145	13,040	13,610	13,370	12,850
All placed applicants	Quintile 1	10,865	11,490	12,305	12,625	12,305	11,980
	Quintile 2	14,435	15,020	15,795	16,175	15,915	15,600
	Quintile 3	16,840	17,300	17,760	18,720	17,990	17,830
	Quintile 4	16,830	17,365	17,630	18,040	17,500	17,125
	Quintile 5	16,395	16,355	16,375	16,885	16,535	15,900
June deadline applicants per 10,000 population	Quintile 1	1,419.9	1,471.8	1,634.3	1,681.4	1,732.3	1,734.6
	Quintile 2	1,815.0	1,873.4	2,019.5	2,064.5	2,116.9	2,107.1
	Quintile 3	2,096.5	2,120.4	2,265.3	2,299.4	2,324.0	2,310.9
	Quintile 4	2,192.9	2,213.0	2,313.2	2,357.3	2,353.1	2,348.6
	Quintile 5	2,160.8	2,130.9	2,197.6	2,194.4	2,213.8	2,200.9
Placed June deadline applicants per 10,000 population	Quintile 1	637.3	690.5	739.4	755.2	764.8	749.5
	Quintile 2	794.6	847.4	890.5	902.4	915.2	906.5
	Quintile 3	875.0	923.1	959.7	986.1	972.5	965.4
	Quintile 4	859.2	905.8	928.5	946.1	933.1	915.0
	Quintile 5	780.1	794.9	799.7	812.9	809.2	782.4
All placed applicants per 10,000 population	Quintile 1	762.7	824.4	884.3	901.1	911.4	900.9
	Quintile 2	962.9	1,019.3	1,079.5	1,089.0	1,100.6	1,098.5
	Quintile 3	1,090.6	1,134.4	1,180.0	1,219.0	1,196.8	1,197.3
	Quintile 4	1,060.6	1,110.2	1,143.9	1,152.5	1,133.4	1,121.3
	Quintile 5	975.9	989.1	1,003.9	1,008.5	1,000.8	968.1

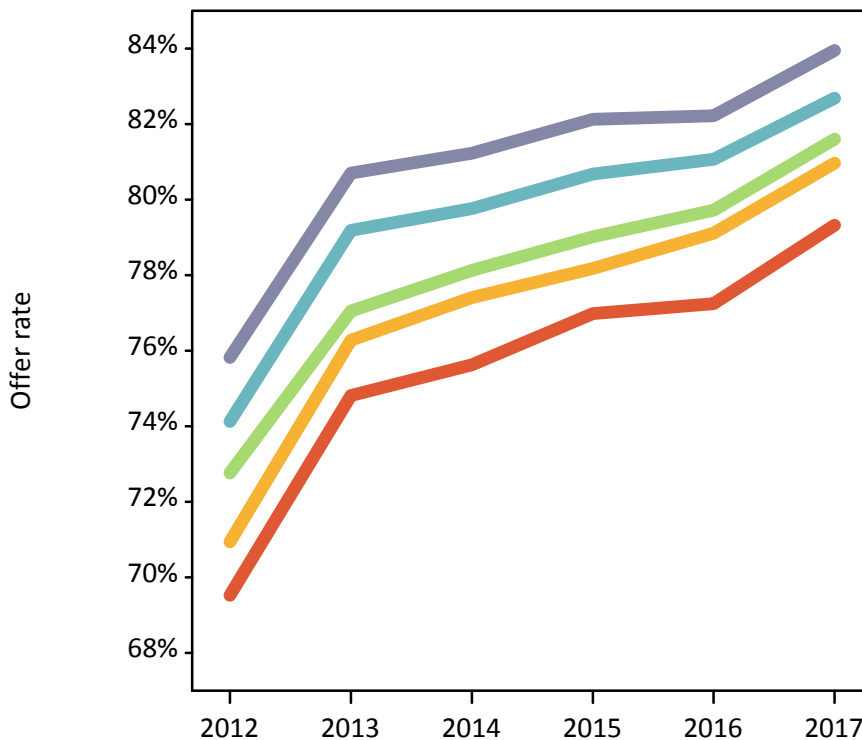
P.8 18 year old applications by POLAR3 quintile

Statistic	POLAR3 quintile	2012	2013	2014	2015	2016	2017
June deadline applications	Quintile 1	55,955	55,455	60,440	61,355	59,715	56,670
	Quintile 2	74,750	74,740	77,835	79,665	77,605	73,820
	Quintile 3	88,530	87,390	89,615	91,205	88,030	84,375
	Quintile 4	90,650	89,450	89,850	91,285	87,425	84,020
	Quintile 5	89,955	85,745	85,595	86,050	83,595	79,740
Offers	Quintile 1	38,905	41,485	45,710	47,235	46,130	44,950
	Quintile 2	53,030	57,010	60,250	62,280	61,390	59,765
	Quintile 3	64,420	67,335	70,015	72,070	70,180	68,845
	Quintile 4	67,200	70,830	71,670	73,645	70,870	69,470
	Quintile 5	68,205	69,195	69,525	70,665	68,730	66,935
Offer rate	Quintile 1	69.5%	74.8%	75.6%	77.0%	77.2%	79.3%
	Quintile 2	70.9%	76.3%	77.4%	78.2%	79.1%	81.0%
	Quintile 3	72.8%	77.0%	78.1%	79.0%	79.7%	81.6%
	Quintile 4	74.1%	79.2%	79.8%	80.7%	81.1%	82.7%
	Quintile 5	75.8%	80.7%	81.2%	82.1%	82.2%	83.9%
Average offer rate	Quintile 1	70.3%	75.8%	76.9%	78.1%	78.4%	80.5%
	Quintile 2	71.3%	76.5%	77.6%	78.6%	79.3%	81.2%
	Quintile 3	73.0%	77.3%	78.3%	79.2%	79.9%	81.7%
	Quintile 4	73.8%	78.6%	79.3%	80.2%	80.6%	82.3%
	Quintile 5	75.1%	80.2%	80.4%	81.2%	81.6%	83.2%
Percentage point difference between offer rate and average offer rate	Quintile 1	-0.8	-1.0	-1.3	-1.1	-1.1	-1.2
	Quintile 2	-0.3	-0.3	-0.2	-0.4	-0.2	-0.2
	Quintile 3	-0.3	-0.3	-0.2	-0.2	-0.2	-0.1
	Quintile 4	0.3	0.6	0.5	0.4	0.5	0.4
	Quintile 5	0.7	0.5	0.8	0.9	0.7	0.8
Contribution of group to the average offer rate	Quintile 1	0.248	0.251	0.254	0.252	0.255	0.257
	Quintile 2	0.279	0.283	0.282	0.282	0.285	0.287
	Quintile 3	0.304	0.304	0.301	0.302	0.302	0.306
	Quintile 4	0.312	0.314	0.307	0.306	0.305	0.309
	Quintile 5	0.326	0.323	0.318	0.315	0.315	0.317

P.9 18 year old offer rate by POLAR3 quintile

Note: The line for a group is not plotted when that group made fewer than 10 applications in any of the years from 2012-2017.

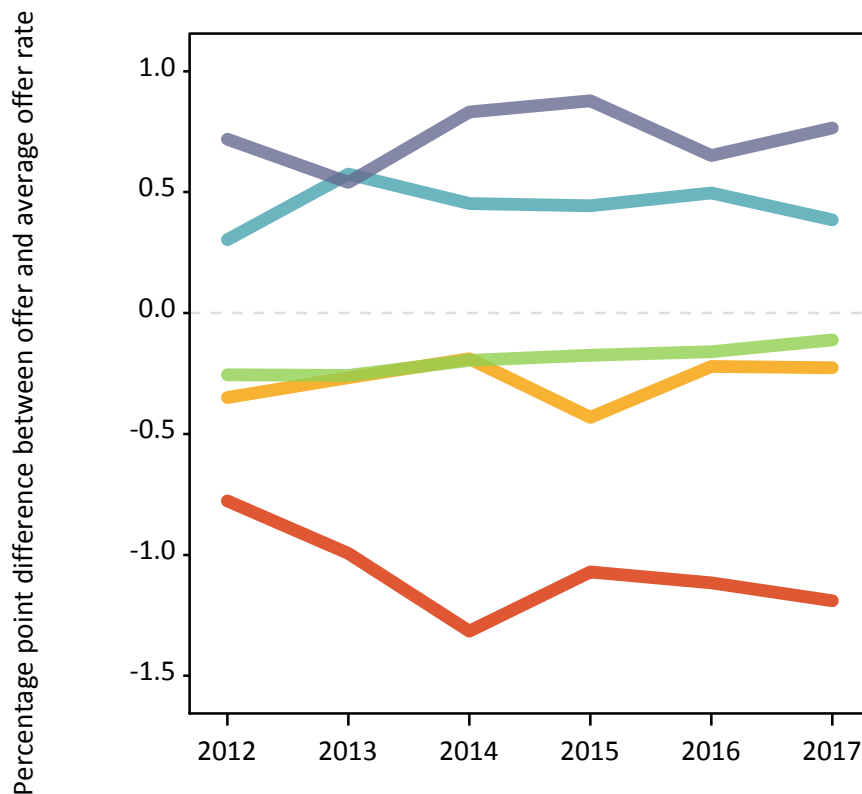
- Quintile 1
- Quintile 2
- Quintile 3
- Quintile 4
- Quintile 5



P.10 Percentage point difference between 18 year old offer rate and average offer rate by POLAR3 quintile

Note: The line for a group is not plotted when that group made fewer than 50 applications in any of the years from 2012-2017.

- Quintile 1
- Quintile 2
- Quintile 3
- Quintile 4
- Quintile 5



P.11 18 year old applicants by ethnic group

Statistic	Ethnic group	2012	2013	2014	2015	2016	2017
June deadline applicants	Asian	16,220	16,525	17,640	18,815	19,665	20,115
	Black	7,910	8,770	9,075	9,940	9,790	9,775
	Mixed	4,935	5,090	5,610	6,230	6,325	6,475
	White	119,845	117,865	123,245	125,485	123,200	120,135
	Other	1,755	1,820	2,085	2,295	2,390	2,555
Placed June deadline applicants	Asian	6,440	7,080	7,375	7,860	8,015	7,985
	Black	3,220	3,685	3,645	4,035	3,995	4,005
	Mixed	1,970	2,070	2,290	2,570	2,585	2,575
	White	48,825	49,840	50,890	51,950	50,235	48,345
	Other	690	745	865	960	930	1,000
All placed applicants	Asian	9,540	9,985	10,580	11,125	11,280	11,470
	Black	4,875	5,440	5,390	5,995	5,760	5,720
	Mixed	2,480	2,620	2,900	3,245	3,205	3,245
	White	57,185	58,150	59,500	60,375	58,290	56,300
	Other	1,045	1,080	1,240	1,380	1,325	1,440
June deadline applicants per 10,000 population	Asian	2,504.4	2,505.4	2,600.8	2,658.1	2,732.6	2,733.8
	Black	2,809.1	2,953.9	2,994.0	3,122.2	3,126.7	3,105.8
	Mixed	1,895.1	1,881.8	1,949.7	2,020.7	2,009.4	2,017.1
	White	1,856.1	1,873.2	1,997.7	2,014.0	2,036.8	2,024.3
	Other	1,982.2	2,009.3	2,240.1	2,378.9	2,399.7	2,482.4
Placed June deadline applicants per 10,000 population	Asian	994.8	1,073.2	1,087.2	1,110.7	1,113.9	1,085.3
	Black	1,143.4	1,240.5	1,202.8	1,267.6	1,276.4	1,272.1
	Mixed	756.3	764.9	795.6	833.1	821.5	802.2
	White	756.2	792.1	824.8	833.8	830.5	814.7
	Other	777.5	823.8	927.2	993.9	933.5	968.9
All placed applicants per 10,000 population	Asian	1,472.8	1,514.2	1,560.1	1,571.9	1,567.8	1,559.0
	Black	1,730.7	1,831.6	1,778.1	1,883.9	1,840.1	1,817.4
	Mixed	951.7	968.6	1,007.3	1,051.7	1,017.9	1,010.3
	White	885.6	924.2	964.4	969.0	963.7	948.7
	Other	1,183.2	1,188.8	1,332.2	1,430.7	1,332.5	1,399.9

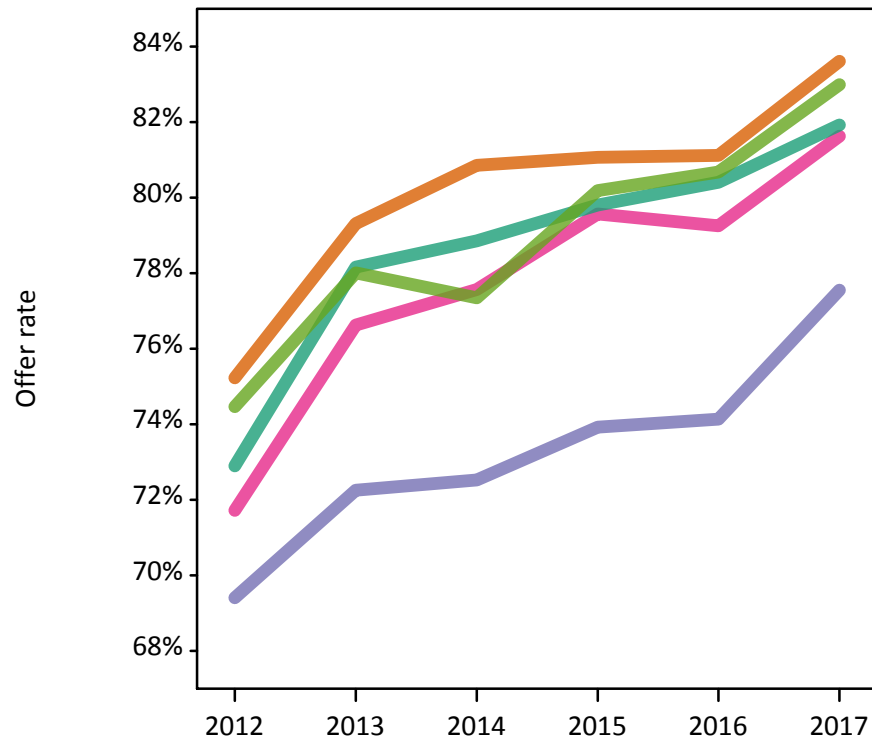
P.12 18 year old applications by ethnic group

Statistic	Ethnic group	2012	2013	2014	2015	2016	2017
June deadline applications	Asian	48,610	48,975	50,620	52,850	53,885	53,275
	Black	23,915	25,920	26,050	27,710	26,690	25,835
	Mixed	13,245	13,475	14,525	15,750	15,890	15,295
	White	308,350	298,445	305,670	305,955	292,435	276,910
	Other	5,085	5,340	5,960	6,240	6,290	6,430
Offers	Asian	36,570	38,845	40,925	42,845	43,710	44,545
	Black	16,600	18,730	18,895	20,485	19,785	20,035
	Mixed	9,500	10,325	11,270	12,530	12,595	12,485
	White	224,785	233,270	241,030	244,170	235,140	226,850
	Other	3,785	4,165	4,610	5,005	5,075	5,335
Offer rate	Asian	75.2%	79.3%	80.9%	81.1%	81.1%	83.6%
	Black	69.4%	72.3%	72.5%	73.9%	74.1%	77.5%
	Mixed	71.7%	76.6%	77.6%	79.6%	79.3%	81.6%
	White	72.9%	78.2%	78.9%	79.8%	80.4%	81.9%
	Other	74.5%	78.0%	77.3%	80.2%	80.7%	83.0%
Average offer rate	Asian	76.4%	80.4%	81.6%	81.8%	81.9%	84.2%
	Black	73.0%	75.2%	75.7%	76.6%	77.0%	79.6%
	Mixed	73.0%	77.5%	78.1%	80.0%	80.2%	81.8%
	White	72.3%	77.7%	78.4%	79.4%	79.9%	81.6%
	Other	77.0%	79.5%	80.1%	81.5%	81.9%	84.2%
Percentage point difference between offer rate and average offer rate	Asian	-1.1	-1.1	-0.7	-0.8	-0.7	-0.6
	Black	-3.6	-3.0	-3.2	-2.7	-2.8	-2.1
	Mixed	-1.3	-0.9	-0.5	-0.4	-0.9	-0.2
	White	0.6	0.5	0.5	0.4	0.5	0.4
	Other	-2.5	-1.5	-2.7	-1.3	-1.2	-1.3
Contribution of group to the average offer rate	Asian	0.359	0.353	0.346	0.344	0.350	0.361
	Black	0.217	0.223	0.212	0.212	0.215	0.225
	Mixed	0.135	0.136	0.137	0.139	0.138	0.146
	White	0.845	0.837	0.832	0.824	0.818	0.817
	Other	0.141	0.132	0.139	0.136	0.132	0.140

P.13 18 year old offer rate by ethnic group

Note: The line for a group is not plotted when that group made fewer than 10 applications in any of the years from 2012-2017.

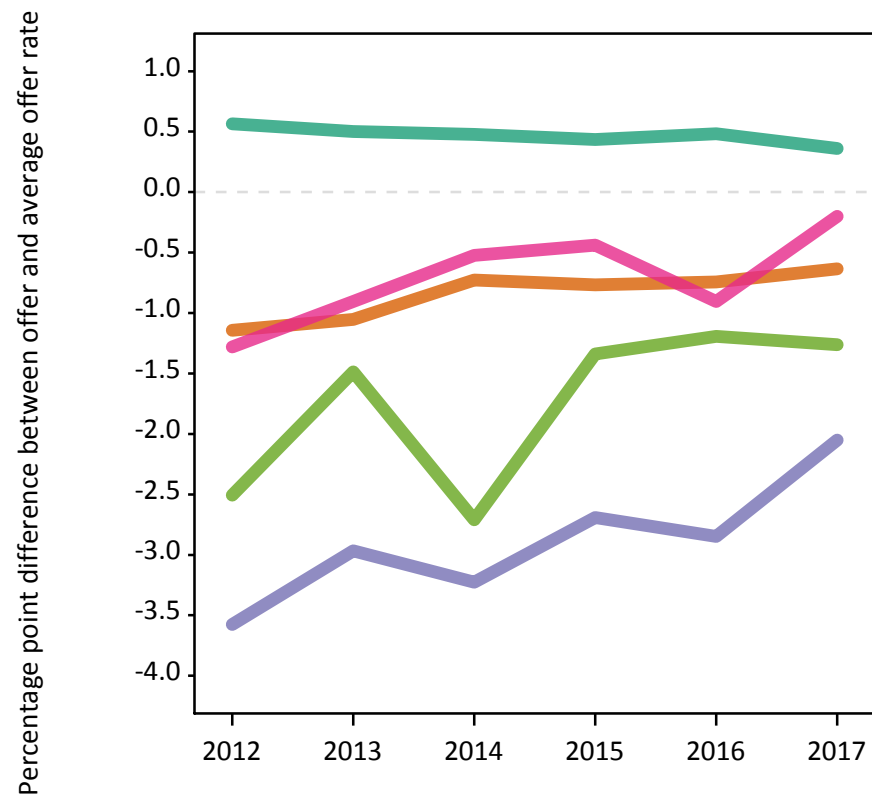
- Asian
- Black
- Mixed
- White
- Other



P.14 Percentage point difference between 18 year old offer rate and average offer rate by ethnic group

Note: The line for a group is not plotted when that group made fewer than 50 applications in any of the years from 2012-2017.

- Asian
- Black
- Mixed
- White
- Other



P.15 Applicants (all ages)

Statistic	2012	2013	2014	2015	2016	2017
June deadline applicants	333,730	338,570	356,815	356,580	352,315	328,815
Placed June deadline applicants	140,105	149,470	153,730	154,530	151,265	143,270
All placed applicants	183,600	196,535	204,645	205,805	199,415	193,755

P.16 Applications (all ages)

Statistic	2012	2013	2014	2015	2016	2017
June deadline applications	878,085	875,255	903,385	888,485	863,005	785,185
Offers	531,020	569,705	593,835	600,635	582,315	558,445
Offer rate	60.5%	65.1%	65.7%	67.6%	67.5%	71.1%

P.17 Applicants (all ages) by sex

Statistic	Sex	2012	2013	2014	2015	2016	2017
June deadline applicants	Men	135,010	137,225	144,505	143,860	141,495	132,535
	Women	198,720	201,345	212,310	212,715	210,815	196,285
Placed June deadline applicants	Men	58,885	63,745	64,985	64,665	62,700	58,410
	Women	81,220	85,730	88,740	89,865	88,565	84,860
All placed applicants	Men	78,915	85,085	87,805	87,125	83,490	79,880
	Women	104,685	111,450	116,845	118,680	115,930	113,870

P.18 Applications (all ages) by sex

Statistic	Sex	2012	2013	2014	2015	2016	2017
June deadline applications	Men	355,720	354,320	364,220	355,880	343,630	313,625
	Women	522,370	520,935	539,165	532,605	519,375	471,565
Offers	Men	239,830	259,165	268,935	267,995	257,635	243,200
	Women	291,190	310,540	324,895	332,640	324,675	315,245
Offer rate	Men	67.4%	73.1%	73.8%	75.3%	75.0%	77.5%
	Women	55.7%	59.6%	60.3%	62.5%	62.5%	66.9%

P.19 Applicants (all ages) by POLAR3 quintile

Statistic	POLAR3 quintile	2012	2013	2014	2015	2016	2017
June deadline applicants	Quintile 1	50,975	52,185	56,970	56,655	56,285	52,665
	Quintile 2	62,355	63,745	68,410	68,515	67,550	62,955
	Quintile 3	73,615	74,545	78,420	78,350	77,665	71,850
	Quintile 4	73,170	74,365	77,255	77,175	75,920	70,925
	Quintile 5	72,760	73,005	74,985	75,085	73,995	69,375
Placed June deadline applicants	Quintile 1	22,705	24,745	26,210	26,040	25,765	24,555
	Quintile 2	27,600	29,520	30,980	30,935	30,160	28,870
	Quintile 3	31,275	33,150	34,100	34,570	33,745	31,975
	Quintile 4	29,905	32,150	32,500	32,625	31,860	29,925
	Quintile 5	28,295	29,630	29,640	30,050	29,375	27,475
All placed applicants	Quintile 1	28,800	31,465	33,550	33,495	32,995	32,145
	Quintile 2	35,630	38,130	40,435	40,475	39,260	38,675
	Quintile 3	41,845	44,590	46,630	47,390	45,595	44,345
	Quintile 4	39,290	42,285	43,545	43,545	41,990	40,665
	Quintile 5	37,415	39,475	39,970	40,290	38,970	37,090

P.20 Applications (all ages) by POLAR3 quintile

Statistic	POLAR3 quintile	2012	2013	2014	2015	2016	2017
June deadline applications	Quintile 1	134,845	134,870	144,760	142,405	139,375	126,730
	Quintile 2	167,270	168,250	176,100	174,220	169,060	154,175
	Quintile 3	200,930	200,090	205,690	202,355	196,650	178,100
	Quintile 4	190,765	191,435	194,205	190,210	183,940	167,365
	Quintile 5	182,075	178,760	180,675	177,395	171,845	156,330
Offers	Quintile 1	76,675	83,460	91,230	92,210	89,955	86,520
	Quintile 2	98,310	106,875	113,905	115,645	112,390	108,035
	Quintile 3	119,185	127,250	132,235	133,805	129,860	124,580
	Quintile 4	118,185	128,045	130,300	131,640	126,675	121,485
	Quintile 5	117,515	122,975	124,940	126,175	122,110	116,130
Offer rate	Quintile 1	56.9%	61.9%	63.0%	64.8%	64.5%	68.3%
	Quintile 2	58.8%	63.5%	64.7%	66.4%	66.5%	70.1%
	Quintile 3	59.3%	63.6%	64.3%	66.1%	66.0%	69.9%
	Quintile 4	62.0%	66.9%	67.1%	69.2%	68.9%	72.6%
	Quintile 5	64.5%	68.8%	69.2%	71.1%	71.1%	74.3%

P.21 Applicants (all ages) by ethnic group

Statistic	Ethnic group	2012	2013	2014	2015	2016	2017
June deadline applicants	Asian	37,600	38,035	40,095	41,700	42,475	40,395
	Black	36,340	35,800	37,285	37,900	38,505	34,395
	Mixed	12,275	12,620	14,015	14,645	14,890	14,260
	White	240,135	244,740	257,435	253,530	247,215	230,740
	Other	5,365	5,310	5,950	6,195	6,435	6,425
Placed June deadline applicants	Asian	15,240	16,545	16,925	17,505	17,535	16,815
	Black	13,115	13,735	14,070	14,395	15,095	14,470
	Mixed	5,140	5,495	6,040	6,365	6,430	6,155
	White	103,705	110,715	113,515	112,645	108,450	102,095
	Other	2,120	2,135	2,395	2,560	2,605	2,635
All placed applicants	Asian	23,515	24,760	25,920	26,760	26,525	25,805
	Black	21,780	22,535	24,985	25,180	24,530	24,480
	Mixed	6,950	7,530	8,395	8,755	8,630	8,475
	White	125,470	134,925	138,210	137,300	132,050	127,055
	Other	3,430	3,555	4,025	4,300	4,270	4,465

P.22 Applications (all ages) by ethnic group

Statistic	Ethnic group	2012	2013	2014	2015	2016	2017
June deadline applications	Asian	113,335	112,650	115,000	116,480	116,175	108,185
	Black	112,890	109,825	112,450	111,825	112,395	98,350
	Mixed	33,415	33,800	36,385	37,315	37,500	34,545
	White	597,520	598,255	617,765	599,570	572,730	521,185
	Other	15,720	15,380	16,740	16,855	17,320	16,670
Offers	Asian	72,915	77,705	80,275	82,480	82,165	80,930
	Black	46,785	49,450	51,150	52,985	52,690	51,585
	Mixed	19,655	21,345	23,470	25,005	25,090	24,340
	White	379,330	408,175	425,175	425,120	406,835	385,890
	Other	9,480	9,905	10,890	11,215	11,340	11,625
Offer rate	Asian	64.3%	69.0%	69.8%	70.8%	70.7%	74.8%
	Black	41.4%	45.0%	45.5%	47.4%	46.9%	52.4%
	Mixed	58.8%	63.2%	64.5%	67.0%	66.9%	70.5%
	White	63.5%	68.2%	68.8%	70.9%	71.0%	74.0%
	Other	60.3%	64.4%	65.1%	66.5%	65.5%	69.7%

Technical Notes and Definitions

UCAS undergraduate scheme

Adjustment

Adjustment allows applicants who have met and exceeded the terms of their conditional firm offer to seek and find a place at another provider whilst keeping their place at their original firm choice provider.

Clearing

Clearing is a route for applicants that are not placed and holding no offers to find a place on courses with vacancies.

Cycle year

The UCAS application cycle which runs from September to October the following year. For example the 2017 cycle runs from September 2016 through to October 2017.

End of cycle

The point in the cycle to which the numbers in this report refer, and the point at which the cycle is closed such that no more applications or offers can be made, and no more applicants can be placed. Numbers reported at the end of cycle exclude information on a small number of applicants who cancelled during the cycle.

Extra

Applicants who are unsuccessful in obtaining an offer or decline all offers may be eligible to apply through Extra, where they can apply to one further course at a time. Extra operates from 25 February until early July. It provides applicants who are eligible the possibility of obtaining an offer before exam results are published and Clearing starts.

June 30 deadline

The deadline for main scheme applications. Applicants who apply after this date will go directly into Clearing.

Record of Prior Acceptance (RPA)

RPA is an acceptance route used when a provider informs UCAS of applicants it has accepted outside of the normal application process (e.g. individuals who have applied directly to the provider).

Reporting groups

Ethnic group

High level grouping of ethnic origin as declared by the applicant: 'White', 'Black', 'Asian', 'Mixed', 'Other', 'Unknown'. Applicants who declare themselves as 'Unknown' ethnic origin are not reported in these tables, but are included in the associated csv data file.

POLAR3 quintile

Developed by HEFCE, POLAR3 classifies small areas across the UK into five groups according to their level of young participation in Higher Education. Each of these groups represents around 20 per cent of young people and is ranked from Quintile 1 (areas with the lowest young participation rates, considered as the most disadvantaged) to Quintile 5 (highest young participation rates, considered most advantaged). POLAR3 is based on the participation rates of young people between 2005 and 2009 who entered Higher Education between 2005-06 and 2010-11, therefore is most suitable for applicants aged 19 and under. These groups are assigned using the postcode declared by the applicant at the time of their application. If a UK postcode is invalid, considered unsafe for measurement or there is no link to Census geography possible then the applicant is not assigned to a quintile. Applicants with no POLAR3 quintile are not reported.

Sex

Sex as declared by the applicant.

SIMD 2016 quintile

Scottish index of multiple deprivation (SIMD) identifies small area concentrations of multiple deprivation across all of Scotland, providing a relative measure of deprivation amongst 6505 small areas (data zones) based on 7 socio-economic domains. These small areas are classified into five groups ranked from Quintile 1 (considered the most deprived) to Quintile 5 (considered least deprived), with equal populations in each quintile. Quintiles are assigned using the postcode declared by the applicant, applicants declaring invalid postcodes are classified as 'Not assigned' and are not reported.

SIMD is only defined for applicants domiciled in Scotland, therefore any applicants domiciled outside of Scotland cannot be assigned to an SIMD quintile and so are not reported for this measure.

SIMD is only reported for providers in Scotland. Application and entry rates by SIMD are reported in the 2017 End of Cycle Report and the 2017 cycle January deadline application rate report.

Statistics reported in the tables

All placed applicants

The number of applicants placed for entry into higher education at the provider through one of their choices, including any choices made through Extra, or via Adjustment, Clearing or RPA.

All placed applicants per 10,000 population

The number of total UK domiciled 18 year old placed applicants for entry into higher education at the provider divided by the number of UK 18 year olds in the population, multiplied by 10,000. This gives the number of 18 year olds, for every 10,000 in the population, that were placed at the provider through one of their choices, including any choices made through Extra, or via Adjustment, Clearing or RPA. It is an alternative way of expressing the entry rate to a provider. By referencing the underlying population this statistic shows how the number of placed applicants is changing in relation to the available pool of potential applicants and so gives the chance that somebody from the group will be placed at a provider.

This statistic is only reported for 18 year olds.

Average offer rate

The offer rate that you might expect if the predicted grades and subject choice of applicants were the only factors that influenced whether an applicant was made an offer by the provider. The average offer rate is calculated by dividing applicants according to their specific combination of grades (for A levels the best three predicted grades are used, for BTECs, International Baccalaureate and Scottish Highers and Advanced Highers, predicted grades along with any grades already achieved upon applying are used) and subject choice. For each combination the number of main scheme offers is divided by the number of main scheme applications, to give an overall offer rate. This is then multiplied by the number of applications made by the group for which the average offer rate is being calculated (for example POLAR3 quintile 1), to give an average number of offers for that group. These average number of offers are then added together across all combinations of predicted grade and subject and divided by the number of main scheme applications from the group to give the average offer rate.

The average offer rate does not attempt to control for any other factors that may play a part in the decision to make an offer, such as the subject of the qualifications studied, their relevance to a course, or the grade in each subject; higher numbers of A levels being studied; the exact profile of grades predicted; personal statements; teacher references; interviews; or any other criteria (such as work experience or portfolios) that may be part of the admissions decision.

This statistic is only reported for 18 year olds.

Contribution of group to the average offer rate

The way in which the average offer rate is defined means that the pattern of application and offers of a group (for example POLAR3 quintile 1) will always contribute, in part, to the average offer rate for that group. When this contribution is large, the average offer rate will mainly reflect the patterns for the group, meaning that the value of the average offer rate will be similar to the offer rate, the percentage point difference statistic will be small, and any real difference between the offer rate and what might be expected given the predicted grades and subject choices of the applicants will be difficult to detect.

Values of the contribution of group to the average offer rate range between 0 and 1. The closer the value is to 1 the greater the contribution a group makes to its own average offer rate.

This statistic is only reported for 18 year olds.

Placed June deadline applicants

An applicant who has been placed for entry into higher education at the provider through a June deadline application.

Placed June deadline applicants per 10,000 population

The number of UK domiciled 18 year old placed June deadline applicants at the provider divided by the number of UK 18 year olds in the population, multiplied by 10,000. This gives the number of 18 year olds, for every 10,000 in the population, that were placed at the provider through one of their June deadline applications. It is an alternative way of expressing the entry rate to a provider, but for placed June deadline applicants only. By referencing the underlying population this statistic shows how the number of placed June deadline applicants is changing in relation to the available pool of potential 18 year old applicants and so gives the chance that somebody from the group will be placed at a provider through a June deadline application.

This statistic is only reported for 18 year olds.

June deadline applications

An application (or choice) to a course in higher education to the provider that is made by the June 30 deadline. Each applicant can make up to five choices this way. The number of June deadline applications does not include choices made through the following routes: Clearing, Extra, Adjustment and RPAs. Applications made to October deadline courses received after the October deadline are not included in these statistics.

June deadline applicants

The number of applicants that made at least one application to the provider by the June 30 deadline.

June deadline applicants per 10,000 population

The number of UK domiciled 18 year old June deadline applicants to the provider divided by the number of UK 18 year olds in the population, multiplied by 10,000. This gives the number of 18 year olds, for every 10,000 in the population, who applied by the June 30 deadline. It is equivalent to the application rate. By referencing the underlying population this statistic shows how the number of June deadline applicants is changing in relation to the available pool of potential 18 year old applicants and so gives the chance that somebody from the group will apply to a provider by the June 30 deadline.

This statistic is only reported for 18 year olds.

Offers

An offer is defined as a provider's decision in response to an application to offer a place to an applicant, often subject to the applicant satisfying academic and/or other criteria, via a June deadline application (i.e. does not cover choices made through the following routes: Clearing, Extra, Adjustment and RPAs).

Offer rate

The number of offers made divided by the number of June deadline applications. This gives the proportion of all June deadline applications to the provider that received an offer.

Percentage point difference between offer rate and average offer rate

The offer rate minus the average offer rate.

The percentage point difference can be compared to the expected range of statistical variation resulting from the calculation of the average offer rate using the Average Offer Rate Lookup Table. Where the value of the percentage point difference lies outside of this range, the percentage point difference may be considered to represent a real difference between the offer rate and the average offer rate.

Other definitions

Age

This analysis uses country-specific age definitions that align with the cut off points for school and college cohorts within the different administrations of the UK. For England and Wales, ages are defined on the 31 August, for Northern Ireland on the 1 July and for Scotland on the 28 February the following year. Defining ages in this way matches the assignment of children to school cohorts. For applicants outside of the UK a cohort cut off of 31 August has been used. Numbers for applicants aged 17 and under are included in the tables that report numbers for all age groups. Providers in Scotland typically receive a higher proportion of applicants aged 17 and under compared to providers elsewhere in the UK.

Provider

A higher education provider - a university or college.

UK domiciled

Declared area of permanent residence within England, Northern Ireland, Scotland and Wales. Applicants from the Channel Islands and Isle of Man are not included.