

B78 University of Bristol

Cycle years: 2012 - 2017

Cycle Reference Point: End of Cycle

Applicant coverage: UK domiciled

Reporting groups: Sex, POLAR3, ethnic group

Applicant statistics: June deadline applicants, placed June deadline applicants, all placed applicants, June deadline applicants per 10,000 population, placed June deadline applicants per 10,000 population, all placed applicants per 10,000 population

Application statistics: June deadline applications, offers, offer rate, average offer rate, percentage point difference between offer rate and average offer rate, contribution of group to the average offer rate

Non-disclosure controls: To avoid the disclosure of information about any individual the following measures are taken

- Applicants, placed applicants, applications and offers are rounded to the nearest 5.
- Applicants/placed applicants per 10,000 population figures are reported as 0 if the applicant/placed applicant figures are rounded to 0.
- All statistics related to the offer rate are not reported when the number of applications for a group is less than 10. The percentage point difference between the offer rate and the average offer rate is not reported when the number of applications for a group is less than 50.
- Offer rates are reported as 0% if there are fewer than 5 offers, and 100% if the number of offers is within 5 of the number of applications. When the offer rate is reported as 0% or 100%, it is reported in italics.

Contents:

- 18 year old applicants: P.1
- 18 year old applications: P.2
- 18 year old applicants by sex: P.3
- 18 year old applications by sex: P.4
- 18 year old applicants by POLAR3 quintile: P.7
- 18 year old applications by POLAR3 quintile: P.8
- 18 year old applicants by ethnic group: P.11
- 18 year old applications by ethnic group: P.12
- Applicants (all ages): P.15
- Applications (all ages): P.16
- Applicants (all ages) by sex: P.17
- Applications (all ages) by sex: P.18
- Applicants (all ages) by POLAR3 quintile: P.19
- Applications (all ages) by POLAR3 quintile: P.20
- Applicants (all ages) by ethnic group: P.21
- Applications (all ages) by ethnic group: P.22

P.1 18 year old applicants

Statistic	2012	2013	2014	2015	2016	2017
June deadline applicants	19,715	20,570	21,360	23,655	23,880	24,060
Placed June deadline applicants	2,920	2,860	3,025	3,195	3,300	3,320
All placed applicants	3,040	2,930	3,145	3,295	3,370	3,545
June deadline applicants per 10,000 population	254.9	270.3	283.6	308.7	318.6	324.8
Placed June deadline applicants per 10,000	37.8	37.6	40.2	41.7	44.0	44.8
All placed applicants per 10,000 population	39.3	38.5	41.7	43.0	45.0	47.8

P.2 18 year old applications

Statistic	2012	2013	2014	2015	2016	2017
June deadline applications	19,995	20,900	21,675	24,130	24,380	24,645
Offers	11,180	12,915	15,305	16,235	16,925	17,580
Offer rate	55.9%	61.8%	70.6%	67.3%	69.4%	71.3%

P.3 18 year old applicants by sex

Statistic	Sex	2012	2013	2014	2015	2016	2017
June deadline applicants	Men	9,465	9,920	10,430	10,925	10,860	11,235
	Women	10,250	10,655	10,930	12,730	13,020	12,825
Placed June deadline applicants	Men	1,420	1,375	1,485	1,475	1,450	1,490
	Women	1,500	1,485	1,540	1,720	1,850	1,830
All placed applicants	Men	1,480	1,405	1,525	1,525	1,475	1,575
	Women	1,565	1,530	1,620	1,770	1,900	1,970
June deadline applicants per 10,000 population	Men	238.7	254.1	269.4	278.4	282.7	295.8
	Women	271.9	287.5	298.6	340.6	356.3	355.2
Placed June deadline applicants per 10,000 population	Men	35.8	35.2	38.4	37.6	37.7	39.3
	Women	39.8	40.1	42.1	46.0	50.6	50.7
All placed applicants per 10,000 population	Men	37.3	35.9	39.4	38.8	38.4	41.5
	Women	41.5	41.3	44.2	47.4	51.9	54.6

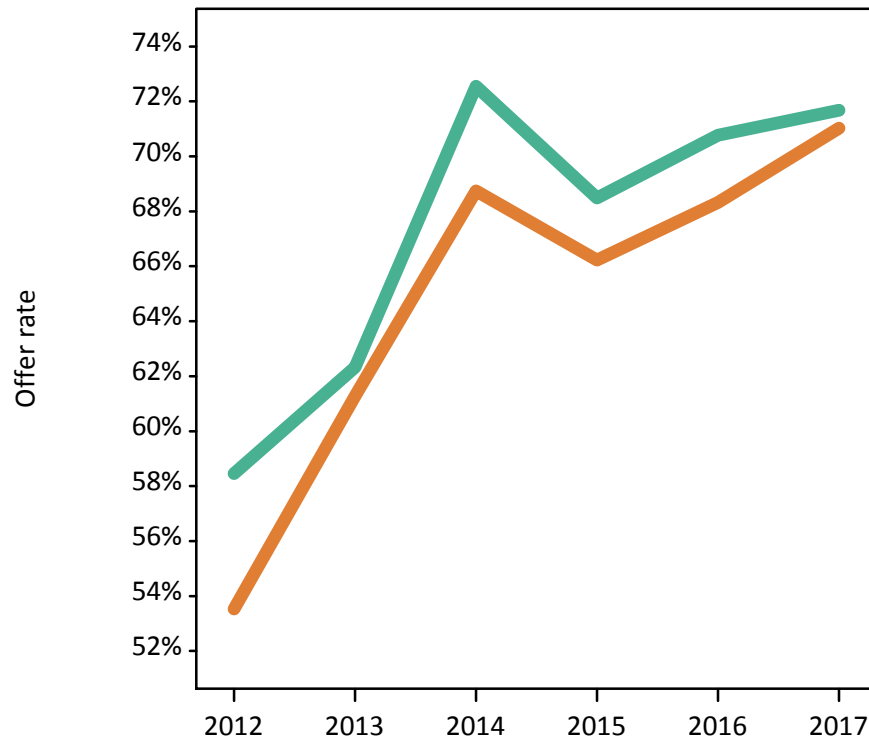
P.4 18 year old applications by sex

Statistic	Sex	2012	2013	2014	2015	2016	2017
June deadline applications	Men	9,600	10,090	10,595	11,130	11,060	11,495
	Women	10,395	10,815	11,080	13,000	13,315	13,150
Offers	Men	5,615	6,290	7,685	7,620	7,830	8,240
	Women	5,565	6,625	7,615	8,610	9,100	9,340
Offer rate	Men	58.5%	62.3%	72.6%	68.5%	70.8%	71.7%
	Women	53.5%	61.3%	68.7%	66.2%	68.3%	71.0%
Average offer rate	Men	59.5%	63.3%	73.1%	69.0%	71.3%	71.9%
	Women	52.6%	60.3%	68.3%	65.8%	67.9%	70.8%
Percentage point difference between offer rate and average offer rate	Men	-1.1	-1.0	-0.5	-0.5	-0.5	-0.3
	Women	1.0	0.9	0.5	0.4	0.4	0.2
Contribution of group to the average offer rate	Men	0.583	0.597	0.602	0.581	0.578	0.590
	Women	0.615	0.624	0.620	0.641	0.649	0.642

P.5 18 year old offer rate by sex

Note: The line for a group is not plotted when that group made fewer than 10 applications in any of the years from 2012-2017.

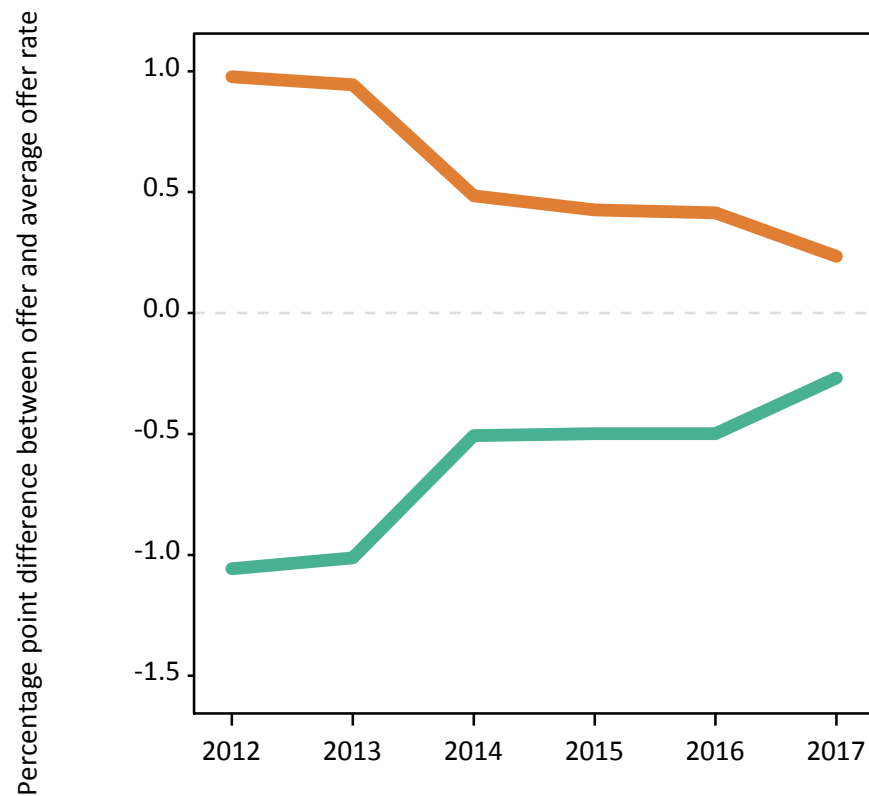
Men
Women



P.6 Percentage point difference between 18 year old offer rate and average offer rate by sex

Note: The line for a group is not plotted when that group made fewer than 50 applications in any of the years from 2012-2017.

Men
Women



P.7 18 year old applicants by POLAR3 quintile

Statistic	POLAR3 quintile	2012	2013	2014	2015	2016	2017
June deadline applicants	Quintile 1	915	945	1,075	1,180	1,220	1,340
	Quintile 2	1,740	1,795	1,845	2,160	2,135	2,260
	Quintile 3	2,815	2,975	3,035	3,405	3,460	3,520
	Quintile 4	4,745	4,935	5,020	5,510	5,520	5,665
	Quintile 5	9,460	9,885	10,325	11,355	11,490	11,220
Placed June deadline applicants	Quintile 1	90	90	110	120	110	160
	Quintile 2	185	180	185	230	245	270
	Quintile 3	340	360	355	390	395	430
	Quintile 4	700	655	700	735	765	705
	Quintile 5	1,600	1,570	1,665	1,715	1,775	1,750
All placed applicants	Quintile 1	95	90	115	120	110	165
	Quintile 2	195	185	190	235	255	285
	Quintile 3	350	370	365	400	405	455
	Quintile 4	720	675	725	760	780	760
	Quintile 5	1,675	1,600	1,730	1,775	1,810	1,870
June deadline applicants per 10,000 population	Quintile 1	64.2	67.8	77.3	84.2	90.5	100.6
	Quintile 2	116.1	121.7	126.2	145.3	147.5	159.3
	Quintile 3	182.2	195.1	201.8	221.7	230.2	236.2
	Quintile 4	299.0	315.5	325.7	352.1	357.5	370.8
	Quintile 5	563.2	597.7	632.9	678.3	695.3	683.2
Placed June deadline applicants per 10,000 population	Quintile 1	6.3	6.5	8.0	8.4	8.0	12.0
	Quintile 2	12.4	12.1	12.6	15.5	16.9	18.9
	Quintile 3	22.1	23.6	23.5	25.5	26.3	29.0
	Quintile 4	44.1	41.8	45.5	47.0	49.4	46.3
	Quintile 5	95.4	95.1	102.1	102.6	107.4	106.4
All placed applicants per 10,000 population	Quintile 1	6.6	6.6	8.3	8.5	8.3	12.6
	Quintile 2	13.0	12.4	13.1	15.8	17.5	20.0
	Quintile 3	22.7	24.4	24.4	26.1	26.9	30.7
	Quintile 4	45.4	43.3	47.0	48.5	50.6	49.7
	Quintile 5	99.8	96.9	106.2	106.0	109.6	113.9

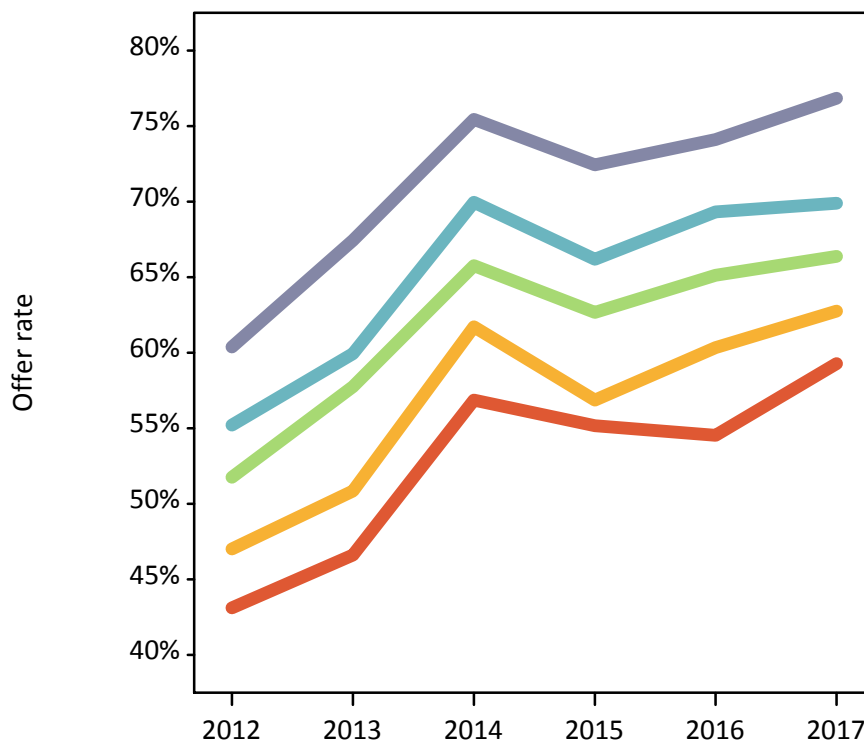
P.8 18 year old applications by POLAR3 quintile

Statistic	POLAR3 quintile	2012	2013	2014	2015	2016	2017
June deadline applications	Quintile 1	935	975	1,100	1,220	1,245	1,380
	Quintile 2	1,775	1,825	1,885	2,210	2,195	2,330
	Quintile 3	2,855	3,030	3,080	3,475	3,530	3,605
	Quintile 4	4,815	5,010	5,085	5,615	5,640	5,795
	Quintile 5	9,570	10,020	10,470	11,570	11,715	11,470
Offers	Quintile 1	405	455	625	670	680	815
	Quintile 2	835	930	1,165	1,255	1,325	1,465
	Quintile 3	1,480	1,750	2,025	2,175	2,300	2,390
	Quintile 4	2,655	3,005	3,555	3,715	3,910	4,050
	Quintile 5	5,780	6,755	7,895	8,380	8,680	8,815
Offer rate	Quintile 1	43.1%	46.6%	56.9%	55.2%	54.5%	59.3%
	Quintile 2	47.0%	50.8%	61.7%	56.9%	60.3%	62.8%
	Quintile 3	51.8%	57.8%	65.8%	62.7%	65.1%	66.4%
	Quintile 4	55.2%	59.9%	69.9%	66.2%	69.3%	69.9%
	Quintile 5	60.4%	67.4%	75.4%	72.4%	74.1%	76.8%
Average offer rate	Quintile 1	46.8%	50.7%	60.4%	56.3%	57.4%	60.6%
	Quintile 2	49.7%	53.9%	64.4%	57.9%	61.4%	64.9%
	Quintile 3	52.2%	58.6%	66.5%	64.5%	66.1%	67.7%
	Quintile 4	55.6%	60.7%	70.3%	66.8%	69.6%	71.0%
	Quintile 5	59.2%	65.8%	74.2%	71.3%	73.2%	75.3%
Percentage point difference between offer rate and average offer rate	Quintile 1	-3.7	-4.1	-3.6	-1.1	-2.9	-1.3
	Quintile 2	-2.7	-3.0	-2.7	-1.1	-1.1	-2.1
	Quintile 3	-0.4	-0.9	-0.7	-1.9	-1.0	-1.3
	Quintile 4	-0.4	-0.7	-0.3	-0.6	-0.3	-1.1
	Quintile 5	1.2	1.6	1.2	1.2	1.0	1.6
Contribution of group to the average offer rate	Quintile 1	0.121	0.135	0.120	0.126	0.122	0.124
	Quintile 2	0.146	0.146	0.144	0.148	0.148	0.149
	Quintile 3	0.191	0.189	0.185	0.183	0.184	0.189
	Quintile 4	0.275	0.269	0.265	0.262	0.260	0.266
	Quintile 5	0.516	0.521	0.520	0.520	0.518	0.510

P.9 18 year old offer rate by POLAR3 quintile

Note: The line for a group is not plotted when that group made fewer than 10 applications in any of the years from 2012-2017.

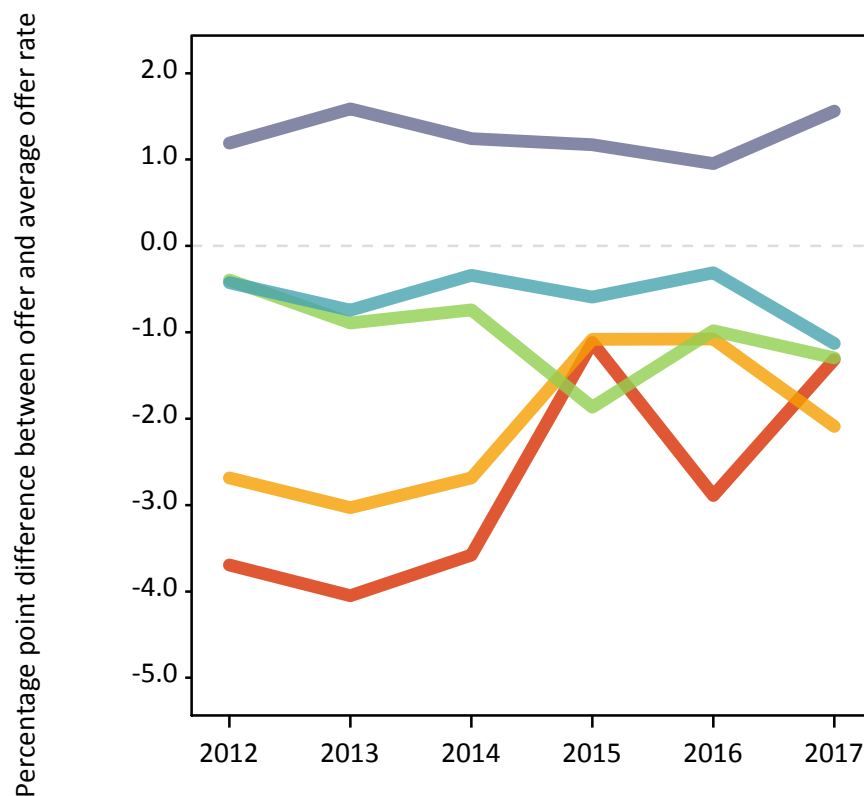
- Quintile 1
- Quintile 2
- Quintile 3
- Quintile 4
- Quintile 5



P.10 Percentage point difference between 18 year old offer rate and average offer rate by POLAR3 quintile

Note: The line for a group is not plotted when that group made fewer than 50 applications in any of the years from 2012-2017.

- Quintile 1
- Quintile 2
- Quintile 3
- Quintile 4
- Quintile 5



P.11 18 year old applicants by ethnic group

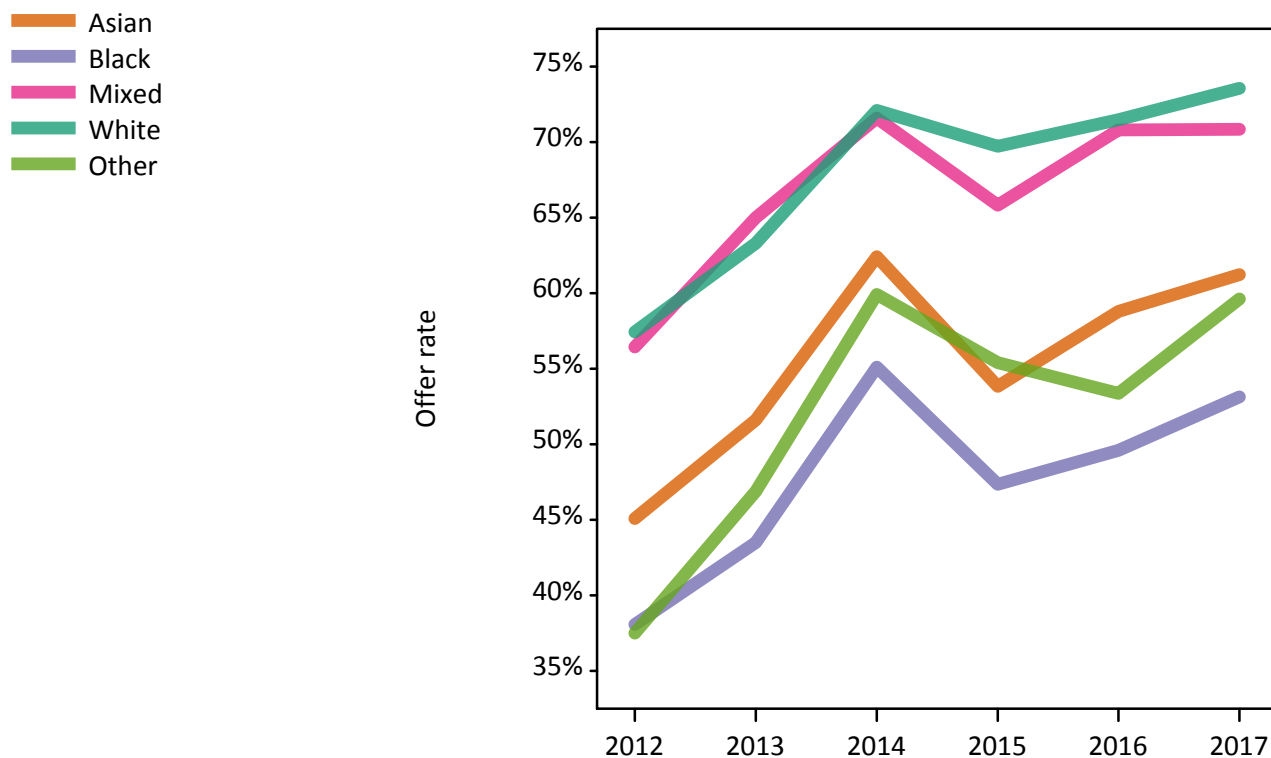
Statistic	Ethnic group	2012	2013	2014	2015	2016	2017
June deadline applicants	Asian	1,485	1,780	1,890	2,250	2,205	2,360
	Black	410	480	560	675	730	785
	Mixed	900	950	1,070	1,215	1,285	1,405
	White	16,595	17,025	17,455	19,015	19,135	18,970
	Other	160	175	240	275	295	310
Placed June deadline applicants	Asian	160	160	165	175	200	210
	Black	30	15	40	45	55	65
	Mixed	125	120	160	165	175	175
	White	2,570	2,530	2,615	2,755	2,800	2,805
	Other	20	15	30	30	35	30
All placed applicants	Asian	170	175	180	185	205	230
	Black	30	15	45	50	60	75
	Mixed	130	125	165	170	180	190
	White	2,665	2,580	2,710	2,825	2,855	2,980
	Other	20	15	35	30	35	35
June deadline applicants per 10,000 population	Asian	229.2	269.9	278.5	317.6	306.7	320.9
	Black	146.3	161.7	185.1	211.4	232.9	249.5
	Mixed	346.3	351.4	371.9	393.7	408.7	438.0
	White	257.0	270.5	282.9	305.2	316.3	319.7
	Other	180.8	194.1	257.9	283.2	295.4	300.0
Placed June deadline applicants per 10,000 population	Asian	25.0	24.0	24.6	24.4	27.5	28.7
	Black	9.9	5.4	13.2	13.8	17.6	21.3
	Mixed	47.2	44.4	55.6	54.2	55.6	54.5
	White	39.8	40.2	42.4	44.2	46.3	47.3
	Other	21.5	15.4	34.4	29.0	33.2	31.1
All placed applicants per 10,000 population	Asian	26.4	26.2	26.4	26.0	28.8	31.5
	Black	10.3	5.7	14.8	15.7	19.2	23.5
	Mixed	50.7	45.9	57.0	55.8	56.6	59.2
	White	41.3	41.0	43.9	45.4	47.2	50.2
	Other	23.7	17.6	36.5	31.1	35.2	34.9

P.12 18 year old applications by ethnic group

Statistic	Ethnic group	2012	2013	2014	2015	2016	2017
June deadline applications	Asian	1,495	1,800	1,905	2,270	2,235	2,415
	Black	415	485	570	680	740	800
	Mixed	915	960	1,085	1,225	1,305	1,435
	White	16,845	17,320	17,730	19,440	19,565	19,450
	Other	160	175	240	280	295	310
Offers	Asian	675	930	1,190	1,220	1,315	1,480
	Black	160	210	315	320	370	425
	Mixed	515	625	780	805	925	1,015
	White	9,675	10,960	12,780	13,555	13,985	14,305
	Other	60	85	145	155	160	185
Offer rate	Asian	45.1%	51.6%	62.4%	53.8%	58.8%	61.2%
	Black	38.1%	43.5%	55.1%	47.3%	49.6%	53.1%
	Mixed	56.4%	65.0%	71.6%	65.8%	70.8%	70.9%
	White	57.4%	63.3%	72.1%	69.7%	71.5%	73.5%
	Other	37.5%	46.9%	59.9%	55.4%	53.4%	59.6%
Average offer rate	Asian	48.1%	52.0%	63.1%	55.7%	59.8%	62.2%
	Black	42.0%	44.4%	58.4%	50.7%	55.0%	55.7%
	Mixed	55.9%	63.2%	72.4%	66.0%	70.4%	72.1%
	White	57.0%	63.3%	71.9%	69.4%	71.2%	73.2%
	Other	44.0%	46.9%	59.4%	56.8%	56.1%	59.3%
Percentage point difference between offer rate and average offer rate	Asian	-3.0	-0.4	-0.6	-1.9	-1.0	-1.0
	Black	-3.9	-0.9	-3.3	-3.4	-5.4	-2.5
	Mixed	0.5	1.8	-0.8	-0.2	0.4	-1.3
	White	0.4	-0.1	0.2	0.4	0.3	0.3
	Other	-6.5	-0.0	0.5	-1.4	-2.7	0.3
Contribution of group to the average offer rate	Asian	0.192	0.205	0.185	0.189	0.185	0.189
	Black	0.116	0.112	0.109	0.094	0.097	0.110
	Mixed	0.094	0.087	0.086	0.086	0.087	0.097
	White	0.861	0.850	0.838	0.826	0.824	0.812
	Other	0.047	0.049	0.052	0.055	0.053	0.070

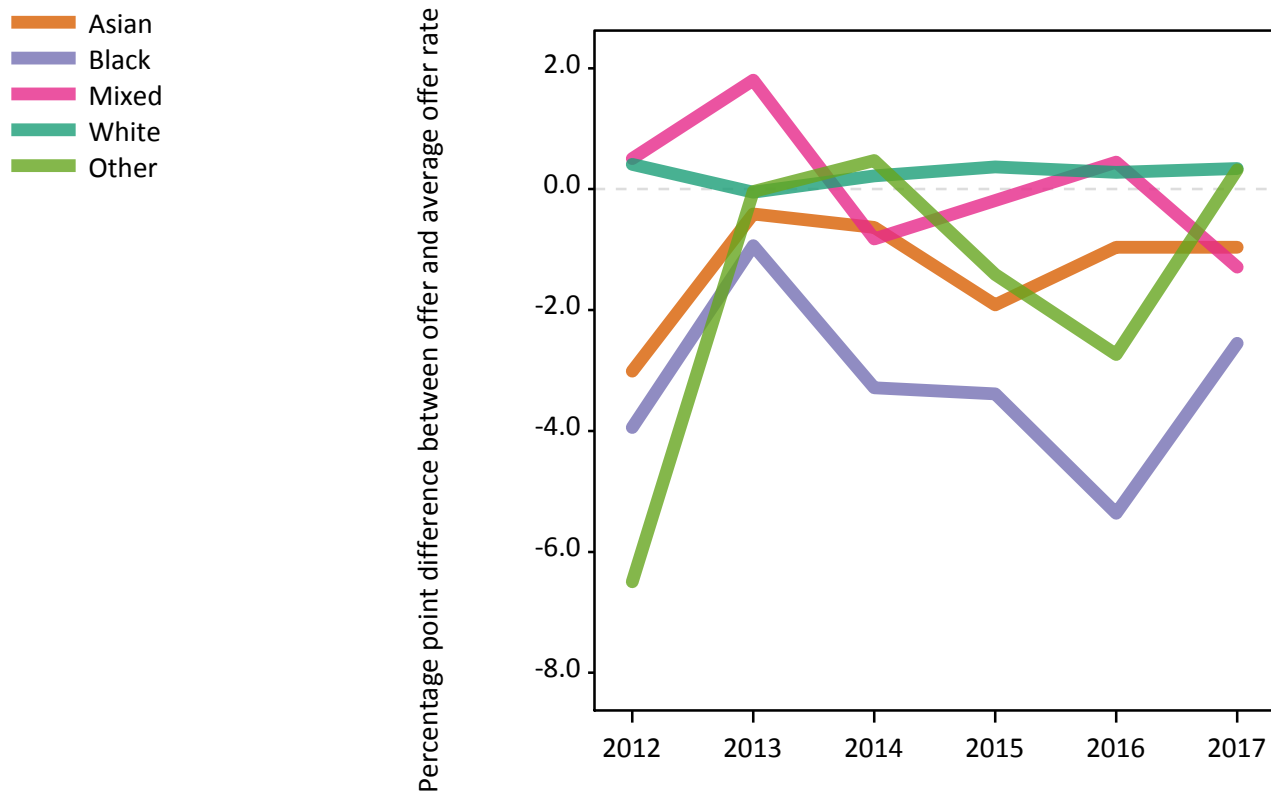
P.13 18 year old offer rate by ethnic group

Note: The line for a group is not plotted when that group made fewer than 10 applications in any of the years from 2012-2017.



P.14 Percentage point difference between 18 year old offer rate and average offer rate by ethnic group

Note: The line for a group is not plotted when that group made fewer than 50 applications in any of the years from 2012-2017.



P.15 Applicants (all ages)

Statistic	2012	2013	2014	2015	2016	2017
June deadline applicants	26,390	28,135	28,820	31,405	31,645	31,730
Placed June deadline applicants	3,720	3,845	4,140	4,195	4,345	4,410
All placed applicants	3,870	3,940	4,300	4,330	4,465	4,700

P.16 Applications (all ages)

Statistic	2012	2013	2014	2015	2016	2017
June deadline applications	26,935	28,790	29,490	32,215	32,565	32,725
Offers	13,410	15,980	18,940	19,870	20,855	21,775
Offer rate	49.8%	55.5%	64.2%	61.7%	64.0%	66.5%

P.17 Applicants (all ages) by sex

Statistic	Sex	2012	2013	2014	2015	2016	2017
June deadline applicants	Men	12,760	13,655	14,155	14,790	14,665	14,995
	Women	13,630	14,485	14,665	16,620	16,980	16,735
Placed June deadline applicants	Men	1,825	1,840	2,025	1,935	1,935	2,015
	Women	1,895	2,005	2,115	2,260	2,410	2,395
All placed applicants	Men	1,895	1,880	2,090	2,000	1,985	2,135
	Women	1,980	2,060	2,210	2,330	2,480	2,570

P.18 Applications (all ages) by sex

Statistic	Sex	2012	2013	2014	2015	2016	2017
June deadline applications	Men	13,025	13,960	14,470	15,145	15,040	15,420
	Women	13,910	14,830	15,020	17,065	17,520	17,305
Offers	Men	6,755	7,775	9,485	9,400	9,735	10,225
	Women	6,655	8,205	9,455	10,470	11,120	11,550
Offer rate	Men	51.9%	55.7%	65.5%	62.1%	64.7%	66.3%
	Women	47.9%	55.3%	62.9%	61.4%	63.5%	66.7%

P.19 Applicants (all ages) by POLAR3 quintile

Statistic	POLAR3 quintile	2012	2013	2014	2015	2016	2017
June deadline applicants	Quintile 1	1,445	1,545	1,690	1,820	1,890	2,040
	Quintile 2	2,550	2,670	2,720	3,035	3,025	3,145
	Quintile 3	3,970	4,230	4,250	4,710	4,725	4,810
	Quintile 4	6,285	6,680	6,775	7,300	7,305	7,405
	Quintile 5	12,060	12,945	13,310	14,465	14,615	14,240
Placed June deadline applicants	Quintile 1	135	150	175	180	180	230
	Quintile 2	250	245	285	305	325	370
	Quintile 3	460	515	520	545	550	585
	Quintile 4	880	865	950	980	1,015	950
	Quintile 5	1,985	2,060	2,195	2,185	2,255	2,270
All placed applicants	Quintile 1	140	155	180	185	185	245
	Quintile 2	265	255	305	310	340	395
	Quintile 3	475	530	535	560	565	620
	Quintile 4	910	895	980	1,010	1,045	1,020
	Quintile 5	2,070	2,100	2,280	2,260	2,315	2,420

P.20 Applications (all ages) by POLAR3 quintile

Statistic	POLAR3 quintile	2012	2013	2014	2015	2016	2017
June deadline applications	Quintile 1	1,510	1,610	1,760	1,900	1,960	2,135
	Quintile 2	2,630	2,745	2,805	3,135	3,125	3,270
	Quintile 3	4,045	4,345	4,360	4,840	4,870	4,970
	Quintile 4	6,420	6,835	6,900	7,455	7,525	7,610
	Quintile 5	12,245	13,185	13,585	14,805	14,995	14,650
Offers	Quintile 1	520	625	850	895	940	1,095
	Quintile 2	1,025	1,185	1,495	1,565	1,660	1,825
	Quintile 3	1,820	2,200	2,545	2,720	2,875	3,005
	Quintile 4	3,175	3,695	4,425	4,560	4,835	5,030
	Quintile 5	6,835	8,240	9,580	10,090	10,505	10,765
Offer rate	Quintile 1	34.4%	38.9%	48.2%	47.1%	47.9%	51.3%
	Quintile 2	39.1%	43.3%	53.2%	49.9%	53.1%	55.9%
	Quintile 3	44.9%	50.7%	58.4%	56.1%	59.1%	60.5%
	Quintile 4	49.5%	54.0%	64.1%	61.2%	64.2%	66.1%
	Quintile 5	55.8%	62.5%	70.5%	68.2%	70.0%	73.5%

P.21 Applicants (all ages) by ethnic group

Statistic	Ethnic group	2012	2013	2014	2015	2016	2017
June deadline applicants	Asian	2,285	2,610	2,685	3,120	3,045	3,235
	Black	795	890	920	1,115	1,125	1,195
	Mixed	1,185	1,300	1,440	1,655	1,745	1,855
	White	21,575	22,730	23,120	24,740	24,915	24,570
	Other	280	310	385	435	460	510
Placed June deadline applicants	Asian	210	205	235	235	265	295
	Black	50	40	50	70	80	95
	Mixed	155	175	220	225	225	245
	White	3,240	3,360	3,565	3,590	3,670	3,675
	Other	30	25	45	40	50	55
All placed applicants	Asian	225	225	255	255	275	320
	Black	50	40	60	75	85	105
	Mixed	165	185	225	230	235	265
	White	3,360	3,425	3,685	3,685	3,755	3,905
	Other	30	30	45	40	55	60

P.22 Applications (all ages) by ethnic group

Statistic	Ethnic group	2012	2013	2014	2015	2016	2017
June deadline applications	Asian	2,320	2,645	2,715	3,170	3,100	3,315
	Black	810	905	940	1,135	1,160	1,220
	Mixed	1,210	1,330	1,475	1,675	1,785	1,905
	White	22,035	23,290	23,690	25,435	25,685	25,385
	Other	280	320	385	445	470	525
Offers	Asian	875	1,160	1,465	1,560	1,665	1,915
	Black	210	290	400	450	500	555
	Mixed	615	770	965	1,005	1,145	1,285
	White	11,495	13,475	15,740	16,425	17,080	17,510
	Other	80	120	200	210	230	270
Offer rate	Asian	37.7%	43.9%	54.0%	49.2%	53.7%	57.8%
	Black	26.0%	32.3%	42.7%	39.7%	42.9%	45.4%
	Mixed	50.8%	58.0%	65.6%	59.9%	64.1%	67.4%
	White	52.2%	57.9%	66.4%	64.6%	66.5%	69.0%
	Other	28.4%	37.1%	51.9%	47.3%	48.5%	51.2%

Technical Notes and Definitions

UCAS undergraduate scheme

Adjustment

Adjustment allows applicants who have met and exceeded the terms of their conditional firm offer to seek and find a place at another provider whilst keeping their place at their original firm choice provider.

Clearing

Clearing is a route for applicants that are not placed and holding no offers to find a place on courses with vacancies.

Cycle year

The UCAS application cycle which runs from September to October the following year. For example the 2017 cycle runs from September 2016 through to October 2017.

End of cycle

The point in the cycle to which the numbers in this report refer, and the point at which the cycle is closed such that no more applications or offers can be made, and no more applicants can be placed. Numbers reported at the end of cycle exclude information on a small number of applicants who cancelled during the cycle.

Extra

Applicants who are unsuccessful in obtaining an offer or decline all offers may be eligible to apply through Extra, where they can apply to one further course at a time. Extra operates from 25 February until early July. It provides applicants who are eligible the possibility of obtaining an offer before exam results are published and Clearing starts.

June 30 deadline

The deadline for main scheme applications. Applicants who apply after this date will go directly into Clearing.

Record of Prior Acceptance (RPA)

RPA is an acceptance route used when a provider informs UCAS of applicants it has accepted outside of the normal application process (e.g. individuals who have applied directly to the provider).

Reporting groups

Ethnic group

High level grouping of ethnic origin as declared by the applicant: 'White', 'Black', 'Asian', 'Mixed', 'Other', 'Unknown'. Applicants who declare themselves as 'Unknown' ethnic origin are not reported in these tables, but are included in the associated csv data file.

POLAR3 quintile

Developed by HEFCE, POLAR3 classifies small areas across the UK into five groups according to their level of young participation in Higher Education. Each of these groups represents around 20 per cent of young people and is ranked from Quintile 1 (areas with the lowest young participation rates, considered as the most disadvantaged) to Quintile 5 (highest young participation rates, considered most advantaged). POLAR3 is based on the participation rates of young people between 2005 and 2009 who entered Higher Education between 2005-06 and 2010-11, therefore is most suitable for applicants aged 19 and under. These groups are assigned using the postcode declared by the applicant at the time of their application. If a UK postcode is invalid, considered unsafe for measurement or there is no link to Census geography possible then the applicant is not assigned to a quintile. Applicants with no POLAR3 quintile are not reported.

Sex

Sex as declared by the applicant.

SIMD 2016 quintile

Scottish index of multiple deprivation (SIMD) identifies small area concentrations of multiple deprivation across all of Scotland, providing a relative measure of deprivation amongst 6505 small areas (data zones) based on 7 socio-economic domains. These small areas are classified into five groups ranked from Quintile 1 (considered the most deprived) to Quintile 5 (considered least deprived), with equal populations in each quintile. Quintiles are assigned using the postcode declared by the applicant, applicants declaring invalid postcodes are classified as 'Not assigned' and are not reported.

SIMD is only defined for applicants domiciled in Scotland, therefore any applicants domiciled outside of Scotland cannot be assigned to an SIMD quintile and so are not reported for this measure.

SIMD is only reported for providers in Scotland. Application and entry rates by SIMD are reported in the 2017 End of Cycle Report and the 2017 cycle January deadline application rate report.

Statistics reported in the tables

All placed applicants

The number of applicants placed for entry into higher education at the provider through one of their choices, including any choices made through Extra, or via Adjustment, Clearing or RPA.

All placed applicants per 10,000 population

The number of total UK domiciled 18 year old placed applicants for entry into higher education at the provider divided by the number of UK 18 year olds in the population, multiplied by 10,000. This gives the number of 18 year olds, for every 10,000 in the population, that were placed at the provider through one of their choices, including any choices made through Extra, or via Adjustment, Clearing or RPA. It is an alternative way of expressing the entry rate to a provider. By referencing the underlying population this statistic shows how the number of placed applicants is changing in relation to the available pool of potential applicants and so gives the chance that somebody from the group will be placed at a provider.

This statistic is only reported for 18 year olds.

Average offer rate

The offer rate that you might expect if the predicted grades and subject choice of applicants were the only factors that influenced whether an applicant was made an offer by the provider. The average offer rate is calculated by dividing applicants according to their specific combination of grades (for A levels the best three predicted grades are used, for BTECs, International Baccalaureate and Scottish Highers and Advanced Highers, predicted grades along with any grades already achieved upon applying are used) and subject choice. For each combination the number of main scheme offers is divided by the number of main scheme applications, to give an overall offer rate. This is then multiplied by the number of applications made by the group for which the average offer rate is being calculated (for example POLAR3 quintile 1), to give an average number of offers for that group. These average number of offers are then added together across all combinations of predicted grade and subject and divided by the number of main scheme applications from the group to give the average offer rate.

The average offer rate does not attempt to control for any other factors that may play a part in the decision to make an offer, such as the subject of the qualifications studied, their relevance to a course, or the grade in each subject; higher numbers of A levels being studied; the exact profile of grades predicted; personal statements; teacher references; interviews; or any other criteria (such as work experience or portfolios) that may be part of the admissions decision.

This statistic is only reported for 18 year olds.

Contribution of group to the average offer rate

The way in which the average offer rate is defined means that the pattern of application and offers of a group (for example POLAR3 quintile 1) will always contribute, in part, to the average offer rate for that group. When this contribution is large, the average offer rate will mainly reflect the patterns for the group, meaning that the value of the average offer rate will be similar to the offer rate, the percentage point difference statistic will be small, and any real difference between the offer rate and what might be expected given the predicted grades and subject choices of the applicants will be difficult to detect.

Values of the contribution of group to the average offer rate range between 0 and 1. The closer the value is to 1 the greater the contribution a group makes to its own average offer rate.

This statistic is only reported for 18 year olds.

Placed June deadline applicants

An applicant who has been placed for entry into higher education at the provider through a June deadline application.

Placed June deadline applicants per 10,000 population

The number of UK domiciled 18 year old placed June deadline applicants at the provider divided by the number of UK 18 year olds in the population, multiplied by 10,000. This gives the number of 18 year olds, for every 10,000 in the population, that were placed at the provider through one of their June deadline applications. It is an alternative way of expressing the entry rate to a provider, but for placed June deadline applicants only. By referencing the underlying population this statistic shows how the number of placed June deadline applicants is changing in relation to the available pool of potential 18 year old applicants and so gives the chance that somebody from the group will be placed at a provider through a June deadline application.

This statistic is only reported for 18 year olds.

June deadline applications

An application (or choice) to a course in higher education to the provider that is made by the June 30 deadline. Each applicant can make up to five choices this way. The number of June deadline applications does not include choices made through the following routes: Clearing, Extra, Adjustment and RPAs. Applications made to October deadline courses received after the October deadline are not included in these statistics.

June deadline applicants

The number of applicants that made at least one application to the provider by the June 30 deadline.

June deadline applicants per 10,000 population

The number of UK domiciled 18 year old June deadline applicants to the provider divided by the number of UK 18 year olds in the population, multiplied by 10,000. This gives the number of 18 year olds, for every 10,000 in the population, who applied by the June 30 deadline. It is equivalent to the application rate. By referencing the underlying population this statistic shows how the number of June deadline applicants is changing in relation to the available pool of potential 18 year old applicants and so gives the chance that somebody from the group will apply to a provider by the June 30 deadline.

This statistic is only reported for 18 year olds.

Offers

An offer is defined as a provider's decision in response to an application to offer a place to an applicant, often subject to the applicant satisfying academic and/or other criteria, via a June deadline application (i.e. does not cover choices made through the following routes: Clearing, Extra, Adjustment and RPAs).

Offer rate

The number of offers made divided by the number of June deadline applications. This gives the proportion of all June deadline applications to the provider that received an offer.

Percentage point difference between offer rate and average offer rate

The offer rate minus the average offer rate.

The percentage point difference can be compared to the expected range of statistical variation resulting from the calculation of the average offer rate using the Average Offer Rate Lookup Table. Where the value of the percentage point difference lies outside of this range, the percentage point difference may be considered to represent a real difference between the offer rate and the average offer rate.

Other definitions

Age

This analysis uses country-specific age definitions that align with the cut off points for school and college cohorts within the different administrations of the UK. For England and Wales, ages are defined on the 31 August, for Northern Ireland on the 1 July and for Scotland on the 28 February the following year. Defining ages in this way matches the assignment of children to school cohorts. For applicants outside of the UK a cohort cut off of 31 August has been used. Numbers for applicants aged 17 and under are included in the tables that report numbers for all age groups. Providers in Scotland typically receive a higher proportion of applicants aged 17 and under compared to providers elsewhere in the UK.

Provider

A higher education provider - a university or college.

UK domiciled

Declared area of permanent residence within England, Northern Ireland, Scotland and Wales. Applicants from the Channel Islands and Isle of Man are not included.