

C30 University of Central Lancashire (UCLan)

Cycle years: 2012 - 2017

Cycle Reference Point: End of Cycle

Applicant coverage: UK domiciled

Reporting groups: Sex, POLAR3, ethnic group

Applicant statistics: June deadline applicants, placed June deadline applicants, all placed applicants, June deadline applicants per 10,000 population, placed June deadline applicants per 10,000 population, all placed applicants per 10,000 population

Application statistics: June deadline applications, offers, offer rate, average offer rate, percentage point difference between offer rate and average offer rate, contribution of group to the average offer rate

Non-disclosure controls: To avoid the disclosure of information about any individual the following measures are taken

- Applicants, placed applicants, applications and offers are rounded to the nearest 5.
- Applicants/placed applicants per 10,000 population figures are reported as 0 if the applicant/placed applicant figures are rounded to 0.
- All statistics related to the offer rate are not reported when the number of applications for a group is less than 10. The percentage point difference between the offer rate and the average offer rate is not reported when the number of applications for a group is less than 50.
- Offer rates are reported as 0% if there are fewer than 5 offers, and 100% if the number of offers is within 5 of the number of applications. When the offer rate is reported as 0% or 100%, it is reported in italics.

Contents:

18 year old applicants:	P.1
18 year old applications:	P.2
18 year old applicants by sex:	P.3
18 year old applications by sex:	P.4
18 year old applicants by POLAR3 quintile:	P.7
18 year old applications by POLAR3 quintile:	P.8
18 year old applicants by ethnic group:	P.11
18 year old applications by ethnic group:	P.12
Applicants (all ages):	P.15
Applications (all ages):	P.16
Applicants (all ages) by sex:	P.17
Applications (all ages) by sex:	P.18
Applicants (all ages) by POLAR3 quintile:	P.19
Applications (all ages) by POLAR3 quintile:	P.20
Applicants (all ages) by ethnic group:	P.21
Applications (all ages) by ethnic group:	P.22

P.1 18 year old applicants

Statistic	2012	2013	2014	2015	2016	2017
June deadline applicants	11,045	9,880	10,185	10,970	9,260	8,280
Placed June deadline applicants	1,835	1,890	1,880	1,915	1,575	1,400
All placed applicants	2,210	2,330	2,560	2,400	2,070	1,870
June deadline applicants per 10,000 population	142.8	129.8	135.2	143.2	123.6	111.8
Placed June deadline applicants per 10,000	23.7	24.8	25.0	25.0	21.0	18.9
All placed applicants per 10,000 population	28.6	30.6	34.0	31.3	27.6	25.3

P.2 18 year old applications

Statistic	2012	2013	2014	2015	2016	2017
June deadline applications	12,240	10,830	11,205	12,225	10,220	9,110
Offers	9,150	8,715	9,215	10,330	8,335	7,410
Offer rate	74.7%	80.5%	82.3%	84.5%	81.5%	81.4%

P.3 18 year old applicants by sex

Statistic	Sex	2012	2013	2014	2015	2016	2017
June deadline applicants	Men	4,945	4,445	4,525	4,930	4,200	3,710
	Women	6,105	5,435	5,660	6,040	5,065	4,570
Placed June deadline applicants	Men	845	910	915	890	755	635
	Women	990	980	965	1,030	820	765
All placed applicants	Men	1,020	1,080	1,225	1,085	935	840
	Women	1,195	1,245	1,335	1,315	1,135	1,030
June deadline applicants per 10,000 population	Men	124.6	113.8	116.8	125.6	109.3	97.7
	Women	161.9	146.7	154.7	161.7	138.6	126.6
Placed June deadline applicants per 10,000 population	Men	21.3	23.3	23.7	22.6	19.6	16.7
	Women	26.3	26.5	26.3	27.5	22.5	21.2
All placed applicants per 10,000 population	Men	25.7	27.7	31.7	27.7	24.4	22.1
	Women	31.7	33.7	36.4	35.2	31.1	28.6

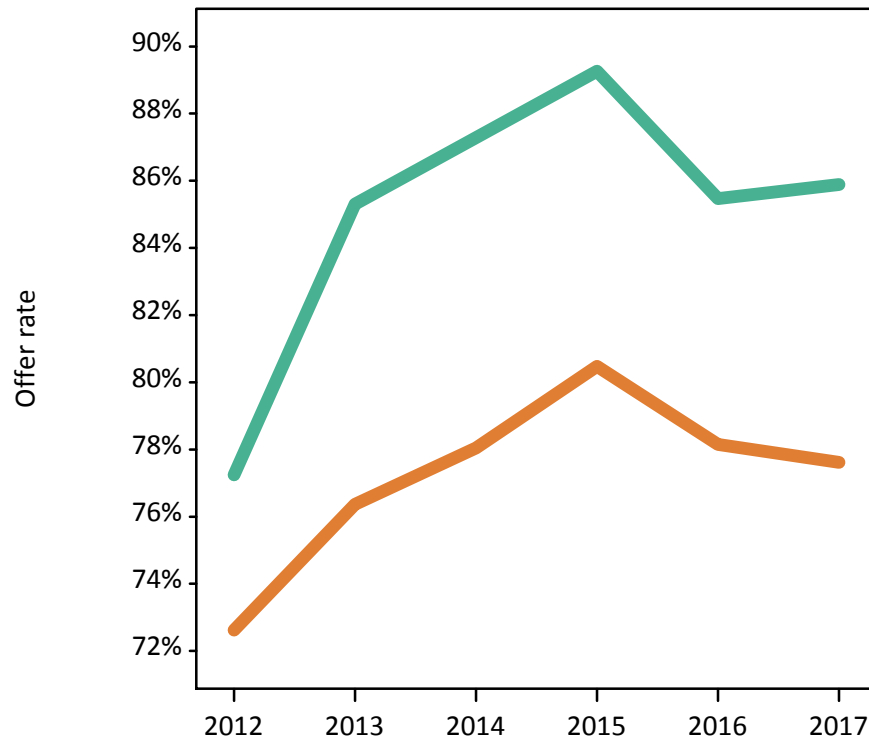
P.4 18 year old applications by sex

Statistic	Sex	2012	2013	2014	2015	2016	2017
June deadline applications	Men	5,605	4,960	5,105	5,615	4,720	4,115
	Women	6,635	5,870	6,100	6,610	5,500	4,995
Offers	Men	4,330	4,235	4,455	5,015	4,035	3,535
	Women	4,820	4,485	4,760	5,320	4,300	3,875
Offer rate	Men	77.2%	85.3%	87.3%	89.3%	85.5%	85.9%
	Women	72.6%	76.4%	78.0%	80.5%	78.1%	77.6%
Average offer rate	Men	77.5%	84.9%	87.1%	88.8%	85.7%	85.4%
	Women	72.4%	76.7%	78.2%	80.9%	78.0%	78.0%
Percentage point difference between offer rate and average offer rate	Men	-0.2	0.4	0.2	0.5	-0.2	0.4
	Women	0.2	-0.3	-0.2	-0.4	0.2	-0.4
Contribution of group to the average offer rate	Men	0.622	0.633	0.631	0.646	0.656	0.655
	Women	0.681	0.690	0.691	0.699	0.705	0.716

P.5 18 year old offer rate by sex

Note: The line for a group is not plotted when that group made fewer than 10 applications in any of the years from 2012-2017.

Men
Women



P.6 Percentage point difference between 18 year old offer rate and average offer rate by sex

Note: The line for a group is not plotted when that group made fewer than 50 applications in any of the years from 2012-2017.

Men
Women



P.7 18 year old applicants by POLAR3 quintile

Statistic	POLAR3 quintile	2012	2013	2014	2015	2016	2017
June deadline applicants	Quintile 1	1,855	1,670	1,910	2,015	1,750	1,590
	Quintile 2	2,190	1,965	1,980	2,180	1,895	1,605
	Quintile 3	2,445	2,220	2,330	2,575	2,155	1,925
	Quintile 4	2,495	2,280	2,240	2,335	1,925	1,740
	Quintile 5	2,045	1,730	1,705	1,855	1,515	1,410
Placed June deadline applicants	Quintile 1	335	315	340	375	275	270
	Quintile 2	370	390	385	370	305	280
	Quintile 3	415	435	450	475	360	300
	Quintile 4	400	435	430	415	355	325
	Quintile 5	315	310	270	280	275	225
All placed applicants	Quintile 1	405	400	460	460	360	360
	Quintile 2	435	475	510	480	410	370
	Quintile 3	485	525	625	590	480	415
	Quintile 4	495	545	570	515	465	420
	Quintile 5	390	385	385	355	355	305
June deadline applicants per 10,000 population	Quintile 1	130.4	119.9	137.3	144.0	129.7	119.4
	Quintile 2	146.2	133.3	135.3	146.8	131.2	112.9
	Quintile 3	158.3	145.6	154.8	167.6	143.4	129.4
	Quintile 4	157.4	145.7	145.5	149.2	124.6	113.8
	Quintile 5	121.7	104.7	104.5	110.9	91.7	85.9
Placed June deadline applicants per 10,000 population	Quintile 1	23.7	22.7	24.5	26.8	20.5	20.2
	Quintile 2	24.5	26.4	26.3	25.0	21.2	19.6
	Quintile 3	26.9	28.6	30.0	30.8	24.0	20.1
	Quintile 4	25.2	27.9	27.9	26.4	23.0	21.4
	Quintile 5	18.7	18.8	16.6	16.8	16.6	13.7
All placed applicants per 10,000 population	Quintile 1	28.4	28.6	33.1	32.8	26.8	27.0
	Quintile 2	29.0	32.3	34.9	32.2	28.4	25.9
	Quintile 3	31.4	34.3	41.5	38.4	31.9	27.9
	Quintile 4	31.2	34.7	37.1	33.0	30.1	27.6
	Quintile 5	23.1	23.3	23.7	21.3	21.4	18.5

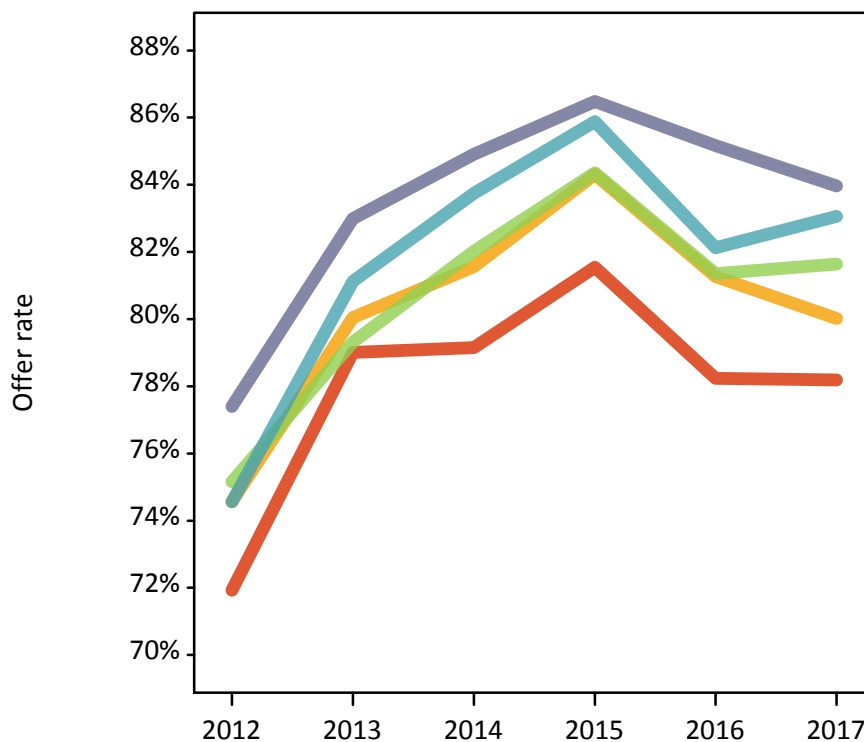
P.8 18 year old applications by POLAR3 quintile

Statistic	POLAR3 quintile	2012	2013	2014	2015	2016	2017
June deadline applications	Quintile 1	2,075	1,835	2,105	2,260	1,930	1,760
	Quintile 2	2,430	2,150	2,175	2,420	2,115	1,760
	Quintile 3	2,710	2,465	2,575	2,910	2,370	2,090
	Quintile 4	2,765	2,495	2,485	2,605	2,110	1,925
	Quintile 5	2,245	1,875	1,840	2,020	1,680	1,560
Offers	Quintile 1	1,495	1,450	1,665	1,840	1,510	1,375
	Quintile 2	1,810	1,720	1,775	2,040	1,720	1,410
	Quintile 3	2,035	1,955	2,110	2,455	1,930	1,705
	Quintile 4	2,065	2,025	2,080	2,240	1,730	1,600
	Quintile 5	1,735	1,555	1,565	1,745	1,430	1,310
Offer rate	Quintile 1	71.9%	79.0%	79.2%	81.5%	78.2%	78.2%
	Quintile 2	74.6%	80.0%	81.6%	84.3%	81.3%	80.0%
	Quintile 3	75.2%	79.3%	82.0%	84.4%	81.4%	81.6%
	Quintile 4	74.6%	81.1%	83.7%	85.9%	82.1%	83.1%
	Quintile 5	77.4%	83.0%	84.9%	86.5%	85.2%	84.0%
Average offer rate	Quintile 1	72.4%	79.5%	80.4%	82.6%	79.5%	79.8%
	Quintile 2	74.7%	80.2%	81.8%	84.0%	81.6%	80.6%
	Quintile 3	75.2%	79.5%	82.6%	84.5%	81.9%	82.1%
	Quintile 4	75.2%	80.6%	82.5%	85.3%	81.3%	82.0%
	Quintile 5	76.0%	82.7%	84.1%	86.2%	83.6%	82.3%
Percentage point difference between offer rate and average offer rate	Quintile 1	-0.5	-0.5	-1.3	-1.1	-1.2	-1.6
	Quintile 2	-0.1	-0.2	-0.2	0.3	-0.3	-0.6
	Quintile 3	-0.1	-0.2	-0.5	-0.2	-0.5	-0.4
	Quintile 4	-0.6	0.6	1.2	0.6	0.8	1.1
	Quintile 5	1.4	0.3	0.8	0.2	1.6	1.6
Contribution of group to the average offer rate	Quintile 1	0.246	0.253	0.262	0.261	0.276	0.280
	Quintile 2	0.266	0.276	0.262	0.268	0.291	0.278
	Quintile 3	0.288	0.296	0.303	0.315	0.316	0.321
	Quintile 4	0.298	0.305	0.298	0.285	0.293	0.305
	Quintile 5	0.268	0.267	0.268	0.267	0.273	0.280

P.9 18 year old offer rate by POLAR3 quintile

Note: The line for a group is not plotted when that group made fewer than 10 applications in any of the years from 2012-2017.

- Quintile 1
- Quintile 2
- Quintile 3
- Quintile 4
- Quintile 5



P.10 Percentage point difference between 18 year old offer rate and average offer rate by POLAR3 quintile

Note: The line for a group is not plotted when that group made fewer than 50 applications in any of the years from 2012-2017.

- Quintile 1
- Quintile 2
- Quintile 3
- Quintile 4
- Quintile 5



P.11 18 year old applicants by ethnic group

Statistic	Ethnic group	2012	2013	2014	2015	2016	2017
June deadline applicants	Asian	1,100	1,060	1,005	1,330	1,315	1,195
	Black	300	265	315	435	330	300
	Mixed	280	275	305	355	310	285
	White	9,290	8,190	8,460	8,705	7,185	6,390
	Other	55	65	65	105	70	85
Placed June deadline applicants	Asian	195	235	195	245	235	220
	Black	20	30	50	50	40	25
	Mixed	35	45	45	50	45	60
	White	1,575	1,570	1,565	1,540	1,240	1,080
	Other	5	5	15	15	5	10
All placed applicants	Asian	260	310	350	330	345	360
	Black	35	55	110	85	60	50
	Mixed	45	55	75	70	60	85
	White	1,855	1,860	1,955	1,855	1,550	1,335
	Other	5	10	25	15	10	15
June deadline applicants per 10,000 population	Asian	169.6	161.0	148.2	187.8	183.0	162.7
	Black	105.8	89.6	103.6	137.0	105.7	96.0
	Mixed	107.9	102.1	106.7	115.4	98.8	88.8
	White	143.9	130.2	137.2	139.7	118.8	107.6
	Other	62.2	71.7	70.9	108.9	71.3	81.5
Placed June deadline applicants per 10,000 population	Asian	30.3	35.9	28.9	34.9	32.4	30.2
	Black	7.8	10.4	17.2	16.0	12.1	8.6
	Mixed	13.4	17.0	16.3	16.9	14.3	18.1
	White	24.4	25.0	25.4	24.7	20.5	18.2
	Other	5.7	3.3	16.1	14.5	6.0	8.7
All placed applicants per 10,000 population	Asian	40.3	47.3	51.3	46.6	48.1	48.8
	Black	12.1	18.2	36.6	27.3	19.5	15.3
	Mixed	16.9	19.6	25.7	23.0	18.7	26.5
	White	28.7	29.6	31.7	29.8	25.6	22.5
	Other	7.9	9.9	27.9	17.6	11.1	12.6

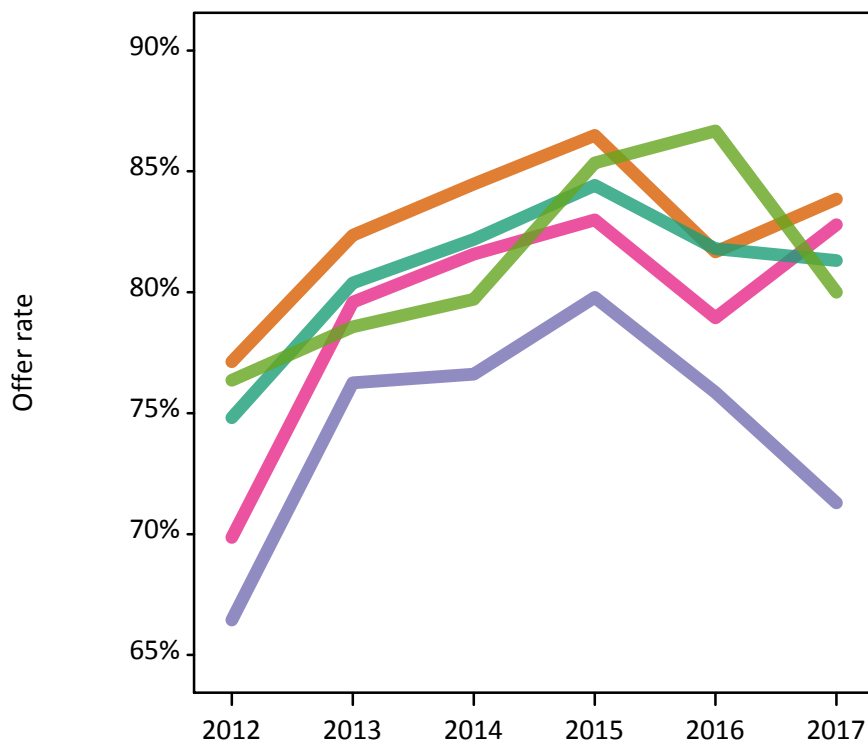
P.12 18 year old applications by ethnic group

Statistic	Ethnic group	2012	2013	2014	2015	2016	2017
June deadline applications	Asian	1,210	1,170	1,115	1,525	1,465	1,320
	Black	305	280	325	465	350	315
	Mixed	300	290	330	390	340	310
	White	10,345	9,010	9,325	9,680	7,945	7,050
	Other	55	70	70	115	75	90
Offers	Asian	935	960	940	1,320	1,200	1,105
	Black	200	210	250	370	265	225
	Mixed	210	230	270	320	270	255
	White	7,740	7,240	7,665	8,175	6,495	5,735
	Other	40	55	55	100	65	70
Offer rate	Asian	77.1%	82.4%	84.5%	86.5%	81.7%	83.9%
	Black	66.4%	76.3%	76.6%	79.8%	75.9%	71.3%
	Mixed	69.9%	79.6%	81.6%	83.0%	78.9%	82.8%
	White	74.8%	80.4%	82.2%	84.4%	81.8%	81.3%
	Other	76.4%	78.6%	79.7%	85.3%	86.7%	80.0%
Average offer rate	Asian	77.7%	82.2%	83.6%	86.4%	81.4%	82.3%
	Black	73.4%	80.1%	81.0%	83.7%	78.9%	76.5%
	Mixed	76.2%	83.5%	83.5%	84.6%	81.9%	82.6%
	White	74.4%	80.1%	82.1%	84.3%	81.6%	81.3%
	Other	70.3%	85.0%	80.6%	84.0%	83.1%	84.2%
Percentage point difference between offer rate and average offer rate	Asian	-0.6	0.1	0.9	0.0	0.3	1.6
	Black	-7.0	-3.9	-4.4	-3.9	-3.1	-5.2
	Mixed	-6.3	-3.9	-1.9	-1.6	-2.9	0.2
	White	0.4	0.3	0.1	0.2	0.2	0.0
	Other	6.1	-6.5	-0.9	1.3	3.6	-4.2
Contribution of group to the average offer rate	Asian	0.305	0.306	0.275	0.294	0.315	0.333
	Black	0.127	0.138	0.140	0.155	0.140	0.157
	Mixed	0.102	0.126	0.137	0.125	0.145	0.153
	White	0.877	0.866	0.864	0.834	0.820	0.821
	Other	0.123	0.095	0.123	0.174	0.131	0.162

P.13 18 year old offer rate by ethnic group

Note: The line for a group is not plotted when that group made fewer than 10 applications in any of the years from 2012-2017.

- Asian
- Black
- Mixed
- White
- Other



P.14 Percentage point difference between 18 year old offer rate and average offer rate by ethnic group

Note: The line for a group is not plotted when that group made fewer than 50 applications in any of the years from 2012-2017.

- Asian
- Black
- Mixed
- White
- Other



P.15 Applicants (all ages)

Statistic	2012	2013	2014	2015	2016	2017
June deadline applicants	22,160	20,705	21,400	22,995	20,445	17,585
Placed June deadline applicants	4,055	4,100	4,505	4,535	3,825	3,540
All placed applicants	5,125	5,565	6,420	6,060	5,375	5,165

P.16 Applications (all ages)

Statistic	2012	2013	2014	2015	2016	2017
June deadline applications	25,100	23,055	23,910	26,155	23,245	19,850
Offers	15,390	15,355	16,755	18,430	15,345	13,555
Offer rate	61.3%	66.6%	70.1%	70.5%	66.0%	68.3%

P.17 Applicants (all ages) by sex

Statistic	Sex	2012	2013	2014	2015	2016	2017
June deadline applicants	Men	9,730	9,070	9,270	10,015	8,760	7,575
	Women	12,425	11,635	12,130	12,980	11,685	10,010
Placed June deadline applicants	Men	1,705	1,885	2,025	2,015	1,705	1,490
	Women	2,355	2,210	2,480	2,520	2,120	2,050
All placed applicants	Men	2,205	2,545	2,950	2,735	2,370	2,210
	Women	2,915	3,020	3,470	3,325	3,005	2,960

P.18 Applications (all ages) by sex

Statistic	Sex	2012	2013	2014	2015	2016	2017
June deadline applications	Men	11,200	10,290	10,545	11,550	10,105	8,650
	Women	13,900	12,770	13,370	14,605	13,140	11,200
Offers	Men	7,255	7,510	8,100	8,970	7,440	6,465
	Women	8,130	7,845	8,655	9,460	7,905	7,090
Offer rate	Men	64.8%	73.0%	76.8%	77.7%	73.6%	74.8%
	Women	58.5%	61.4%	64.7%	64.8%	60.2%	63.3%

P.19 Applicants (all ages) by POLAR3 quintile

Statistic	POLAR3 quintile	2012	2013	2014	2015	2016	2017
June deadline applicants	Quintile 1	4,100	3,910	4,325	4,565	4,280	3,745
	Quintile 2	4,530	4,130	4,250	4,740	4,220	3,485
	Quintile 3	4,820	4,640	4,725	5,235	4,555	3,925
	Quintile 4	4,815	4,560	4,605	4,735	4,115	3,615
	Quintile 5	3,860	3,435	3,455	3,695	3,235	2,770
Placed June deadline applicants	Quintile 1	780	735	840	905	750	760
	Quintile 2	865	825	915	955	775	710
	Quintile 3	900	940	1,070	1,045	860	750
	Quintile 4	840	925	1,025	970	805	785
	Quintile 5	665	670	650	655	630	530
All placed applicants	Quintile 1	975	1,020	1,190	1,220	1,065	1,115
	Quintile 2	1,100	1,160	1,335	1,290	1,145	1,060
	Quintile 3	1,120	1,235	1,515	1,390	1,205	1,130
	Quintile 4	1,075	1,240	1,435	1,280	1,120	1,095
	Quintile 5	840	900	930	870	835	750

P.20 Applications (all ages) by POLAR3 quintile

Statistic	POLAR3 quintile	2012	2013	2014	2015	2016	2017
June deadline applications	Quintile 1	4,680	4,380	4,820	5,220	4,895	4,260
	Quintile 2	5,155	4,595	4,795	5,440	4,820	3,940
	Quintile 3	5,470	5,180	5,295	5,965	5,130	4,400
	Quintile 4	5,450	5,080	5,190	5,405	4,695	4,105
	Quintile 5	4,305	3,785	3,775	4,095	3,660	3,110
Offers	Quintile 1	2,735	2,760	3,160	3,480	2,960	2,720
	Quintile 2	3,115	3,030	3,300	3,810	3,160	2,600
	Quintile 3	3,385	3,445	3,770	4,240	3,460	3,055
	Quintile 4	3,375	3,455	3,760	3,875	3,130	2,925
	Quintile 5	2,765	2,640	2,745	3,005	2,605	2,230
Offer rate	Quintile 1	58.5%	63.0%	65.5%	66.7%	60.5%	63.9%
	Quintile 2	60.4%	65.9%	68.9%	70.1%	65.6%	66.0%
	Quintile 3	61.9%	66.5%	71.2%	71.1%	67.5%	69.4%
	Quintile 4	61.9%	68.0%	72.5%	71.7%	66.7%	71.2%
	Quintile 5	64.2%	69.7%	72.7%	73.3%	71.1%	71.8%

P.21 Applicants (all ages) by ethnic group

Statistic	Ethnic group	2012	2013	2014	2015	2016	2017
June deadline applicants	Asian	2,445	2,430	2,340	2,845	2,695	2,405
	Black	1,030	960	1,100	1,410	1,380	1,235
	Mixed	595	585	645	765	710	625
	White	17,810	16,460	17,045	17,585	15,300	12,990
	Other	195	175	190	265	230	225
Placed June deadline applicants	Asian	420	490	445	495	480	445
	Black	120	125	195	180	150	180
	Mixed	85	95	135	155	115	130
	White	3,400	3,345	3,670	3,650	3,025	2,740
	Other	25	20	35	30	25	25
All placed applicants	Asian	575	665	770	685	725	710
	Black	165	210	340	285	250	260
	Mixed	110	125	185	195	155	180
	White	4,080	4,055	4,535	4,335	3,760	3,460
	Other	35	35	85	55	45	45

P.22 Applications (all ages) by ethnic group

Statistic	Ethnic group	2012	2013	2014	2015	2016	2017
June deadline applications	Asian	2,730	2,700	2,610	3,235	3,065	2,715
	Black	1,075	1,010	1,150	1,525	1,490	1,330
	Mixed	665	625	710	860	800	680
	White	20,325	18,435	19,145	20,100	17,490	14,765
	Other	200	190	200	295	255	245
Offers	Asian	1,735	1,855	1,880	2,380	2,130	1,950
	Black	500	525	630	825	675	630
	Mixed	385	410	510	620	545	480
	White	12,610	12,385	13,540	14,310	11,760	10,280
	Other	110	120	130	200	150	145
Offer rate	Asian	63.6%	68.7%	72.0%	73.6%	69.5%	71.8%
	Black	46.3%	51.8%	54.6%	54.2%	45.3%	47.5%
	Mixed	57.9%	66.1%	71.6%	71.7%	68.4%	70.1%
	White	62.0%	67.2%	70.7%	71.2%	67.2%	69.6%
	Other	53.5%	62.6%	65.8%	68.3%	58.2%	60.0%

Technical Notes and Definitions

UCAS undergraduate scheme

Adjustment

Adjustment allows applicants who have met and exceeded the terms of their conditional firm offer to seek and find a place at another provider whilst keeping their place at their original firm choice provider.

Clearing

Clearing is a route for applicants that are not placed and holding no offers to find a place on courses with vacancies.

Cycle year

The UCAS application cycle which runs from September to October the following year. For example the 2017 cycle runs from September 2016 through to October 2017.

End of cycle

The point in the cycle to which the numbers in this report refer, and the point at which the cycle is closed such that no more applications or offers can be made, and no more applicants can be placed. Numbers reported at the end of cycle exclude information on a small number of applicants who cancelled during the cycle.

Extra

Applicants who are unsuccessful in obtaining an offer or decline all offers may be eligible to apply through Extra, where they can apply to one further course at a time. Extra operates from 25 February until early July. It provides applicants who are eligible the possibility of obtaining an offer before exam results are published and Clearing starts.

June 30 deadline

The deadline for main scheme applications. Applicants who apply after this date will go directly into Clearing.

Record of Prior Acceptance (RPA)

RPA is an acceptance route used when a provider informs UCAS of applicants it has accepted outside of the normal application process (e.g. individuals who have applied directly to the provider).

Reporting groups

Ethnic group

High level grouping of ethnic origin as declared by the applicant: 'White', 'Black', 'Asian', 'Mixed', 'Other', 'Unknown'. Applicants who declare themselves as 'Unknown' ethnic origin are not reported in these tables, but are included in the associated csv data file.

POLAR3 quintile

Developed by HEFCE, POLAR3 classifies small areas across the UK into five groups according to their level of young participation in Higher Education. Each of these groups represents around 20 per cent of young people and is ranked from Quintile 1 (areas with the lowest young participation rates, considered as the most disadvantaged) to Quintile 5 (highest young participation rates, considered most advantaged). POLAR3 is based on the participation rates of young people between 2005 and 2009 who entered Higher Education between 2005-06 and 2010-11, therefore is most suitable for applicants aged 19 and under. These groups are assigned using the postcode declared by the applicant at the time of their application. If a UK postcode is invalid, considered unsafe for measurement or there is no link to Census geography possible then the applicant is not assigned to a quintile. Applicants with no POLAR3 quintile are not reported.

Sex

Sex as declared by the applicant.

SIMD 2016 quintile

Scottish index of multiple deprivation (SIMD) identifies small area concentrations of multiple deprivation across all of Scotland, providing a relative measure of deprivation amongst 6505 small areas (data zones) based on 7 socio-economic domains. These small areas are classified into five groups ranked from Quintile 1 (considered the most deprived) to Quintile 5 (considered least deprived), with equal populations in each quintile. Quintiles are assigned using the postcode declared by the applicant, applicants declaring invalid postcodes are classified as 'Not assigned' and are not reported.

SIMD is only defined for applicants domiciled in Scotland, therefore any applicants domiciled outside of Scotland cannot be assigned to an SIMD quintile and so are not reported for this measure.

SIMD is only reported for providers in Scotland. Application and entry rates by SIMD are reported in the 2017 End of Cycle Report and the 2017 cycle January deadline application rate report.

Statistics reported in the tables

All placed applicants

The number of applicants placed for entry into higher education at the provider through one of their choices, including any choices made through Extra, or via Adjustment, Clearing or RPA.

All placed applicants per 10,000 population

The number of total UK domiciled 18 year old placed applicants for entry into higher education at the provider divided by the number of UK 18 year olds in the population, multiplied by 10,000. This gives the number of 18 year olds, for every 10,000 in the population, that were placed at the provider through one of their choices, including any choices made through Extra, or via Adjustment, Clearing or RPA. It is an alternative way of expressing the entry rate to a provider. By referencing the underlying population this statistic shows how the number of placed applicants is changing in relation to the available pool of potential applicants and so gives the chance that somebody from the group will be placed at a provider.

This statistic is only reported for 18 year olds.

Average offer rate

The offer rate that you might expect if the predicted grades and subject choice of applicants were the only factors that influenced whether an applicant was made an offer by the provider. The average offer rate is calculated by dividing applicants according to their specific combination of grades (for A levels the best three predicted grades are used, for BTECs, International Baccalaureate and Scottish Highers and Advanced Highers, predicted grades along with any grades already achieved upon applying are used) and subject choice. For each combination the number of main scheme offers is divided by the number of main scheme applications, to give an overall offer rate. This is then multiplied by the number of applications made by the group for which the average offer rate is being calculated (for example POLAR3 quintile 1), to give an average number of offers for that group. These average number of offers are then added together across all combinations of predicted grade and subject and divided by the number of main scheme applications from the group to give the average offer rate.

The average offer rate does not attempt to control for any other factors that may play a part in the decision to make an offer, such as the subject of the qualifications studied, their relevance to a course, or the grade in each subject; higher numbers of A levels being studied; the exact profile of grades predicted; personal statements; teacher references; interviews; or any other criteria (such as work experience or portfolios) that may be part of the admissions decision.

This statistic is only reported for 18 year olds.

Contribution of group to the average offer rate

The way in which the average offer rate is defined means that the pattern of application and offers of a group (for example POLAR3 quintile 1) will always contribute, in part, to the average offer rate for that group. When this contribution is large, the average offer rate will mainly reflect the patterns for the group, meaning that the value of the average offer rate will be similar to the offer rate, the percentage point difference statistic will be small, and any real difference between the offer rate and what might be expected given the predicted grades and subject choices of the applicants will be difficult to detect.

Values of the contribution of group to the average offer rate range between 0 and 1. The closer the value is to 1 the greater the contribution a group makes to its own average offer rate.

This statistic is only reported for 18 year olds.

Placed June deadline applicants

An applicant who has been placed for entry into higher education at the provider through a June deadline application.

Placed June deadline applicants per 10,000 population

The number of UK domiciled 18 year old placed June deadline applicants at the provider divided by the number of UK 18 year olds in the population, multiplied by 10,000. This gives the number of 18 year olds, for every 10,000 in the population, that were placed at the provider through one of their June deadline applications. It is an alternative way of expressing the entry rate to a provider, but for placed June deadline applicants only. By referencing the underlying population this statistic shows how the number of placed June deadline applicants is changing in relation to the available pool of potential 18 year old applicants and so gives the chance that somebody from the group will be placed at a provider through a June deadline application.

This statistic is only reported for 18 year olds.

June deadline applications

An application (or choice) to a course in higher education to the provider that is made by the June 30 deadline. Each applicant can make up to five choices this way. The number of June deadline applications does not include choices made through the following routes: Clearing, Extra, Adjustment and RPAs. Applications made to October deadline courses received after the October deadline are not included in these statistics.

June deadline applicants

The number of applicants that made at least one application to the provider by the June 30 deadline.

June deadline applicants per 10,000 population

The number of UK domiciled 18 year old June deadline applicants to the provider divided by the number of UK 18 year olds in the population, multiplied by 10,000. This gives the number of 18 year olds, for every 10,000 in the population, who applied by the June 30 deadline. It is equivalent to the application rate. By referencing the underlying population this statistic shows how the number of June deadline applicants is changing in relation to the available pool of potential 18 year old applicants and so gives the chance that somebody from the group will apply to a provider by the June 30 deadline.

This statistic is only reported for 18 year olds.

Offers

An offer is defined as a provider's decision in response to an application to offer a place to an applicant, often subject to the applicant satisfying academic and/or other criteria, via a June deadline application (i.e. does not cover choices made through the following routes: Clearing, Extra, Adjustment and RPAs).

Offer rate

The number of offers made divided by the number of June deadline applications. This gives the proportion of all June deadline applications to the provider that received an offer.

Percentage point difference between offer rate and average offer rate

The offer rate minus the average offer rate.

The percentage point difference can be compared to the expected range of statistical variation resulting from the calculation of the average offer rate using the Average Offer Rate Lookup Table. Where the value of the percentage point difference lies outside of this range, the percentage point difference may be considered to represent a real difference between the offer rate and the average offer rate.

Other definitions

Age

This analysis uses country-specific age definitions that align with the cut off points for school and college cohorts within the different administrations of the UK. For England and Wales, ages are defined on the 31 August, for Northern Ireland on the 1 July and for Scotland on the 28 February the following year. Defining ages in this way matches the assignment of children to school cohorts. For applicants outside of the UK a cohort cut off of 31 August has been used. Numbers for applicants aged 17 and under are included in the tables that report numbers for all age groups. Providers in Scotland typically receive a higher proportion of applicants aged 17 and under compared to providers elsewhere in the UK.

Provider

A higher education provider - a university or college.

UK domiciled

Declared area of permanent residence within England, Northern Ireland, Scotland and Wales. Applicants from the Channel Islands and Isle of Man are not included.