

## D39 University of Derby

**Cycle years:** 2012 - 2017

**Cycle Reference Point:** End of Cycle

**Applicant coverage:** UK domiciled

**Reporting groups:** Sex, POLAR3, ethnic group

**Applicant statistics:** June deadline applicants, placed June deadline applicants, all placed applicants, June deadline applicants per 10,000 population, placed June deadline applicants per 10,000 population, all placed applicants per 10,000 population

**Application statistics:** June deadline applications, offers, offer rate, average offer rate, percentage point difference between offer rate and average offer rate, contribution of group to the average offer rate

**Non-disclosure controls:** To avoid the disclosure of information about any individual the following measures are taken

- Applicants, placed applicants, applications and offers are rounded to the nearest 5.
- Applicants/placed applicants per 10,000 population figures are reported as 0 if the applicant/placed applicant figures are rounded to 0.
- All statistics related to the offer rate are not reported when the number of applications for a group is less than 10. The percentage point difference between the offer rate and the average offer rate is not reported when the number of applications for a group is less than 50.
- Offer rates are reported as 0% if there are fewer than 5 offers, and 100% if the number of offers is within 5 of the number of applications. When the offer rate is reported as 0% or 100%, it is reported in italics.

### Contents:

18 year old applicants:	P.1
18 year old applications:	P.2
18 year old applicants by sex:	P.3
18 year old applications by sex:	P.4
18 year old applicants by POLAR3 quintile:	P.7
18 year old applications by POLAR3 quintile:	P.8
18 year old applicants by ethnic group:	P.11
18 year old applications by ethnic group:	P.12
Applicants (all ages):	P.15
Applications (all ages):	P.16
Applicants (all ages) by sex:	P.17
Applications (all ages) by sex:	P.18
Applicants (all ages) by POLAR3 quintile:	P.19
Applications (all ages) by POLAR3 quintile:	P.20
Applicants (all ages) by ethnic group:	P.21
Applications (all ages) by ethnic group:	P.22

## P.1 18 year old applicants

Statistic	2012	2013	2014	2015	2016	2017
June deadline applicants	6,785	7,690	8,450	9,360	9,065	9,070
Placed June deadline applicants	1,040	1,295	1,350	1,455	1,530	1,475
All placed applicants	1,310	1,530	1,640	1,750	1,815	1,680
June deadline applicants per 10,000 population	87.7	101.0	112.2	122.2	121.0	122.4
Placed June deadline applicants per 10,000	13.5	17.0	17.9	19.0	20.4	19.9
All placed applicants per 10,000 population	16.9	20.1	21.8	22.8	24.2	22.7

## P.2 18 year old applications

Statistic	2012	2013	2014	2015	2016	2017
June deadline applications	7,200	8,120	9,025	9,875	9,715	9,830
Offers	5,770	6,695	7,830	8,620	8,185	8,560
Offer rate	80.1%	82.4%	86.7%	87.3%	84.2%	87.1%

### P.3 18 year old applicants by sex

Statistic	Sex	2012	2013	2014	2015	2016	2017
June deadline applicants	Men	2,805	3,275	3,685	4,035	3,970	3,885
	Women	3,980	4,410	4,765	5,325	5,100	5,185
Placed June deadline applicants	Men	430	560	615	625	650	600
	Women	615	730	735	830	880	880
All placed applicants	Men	570	660	770	770	785	670
	Women	740	870	870	980	1,030	1,010
June deadline applicants per 10,000 population	Men	70.7	83.9	95.2	102.8	103.3	102.3
	Women	105.6	119.0	130.2	142.5	139.5	143.5
Placed June deadline applicants per 10,000 population	Men	10.8	14.4	15.9	15.9	16.9	15.8
	Women	16.3	19.7	20.1	22.2	24.0	24.3
All placed applicants per 10,000 population	Men	14.3	16.9	19.8	19.7	20.4	17.7
	Women	19.6	23.5	23.8	26.2	28.2	27.9

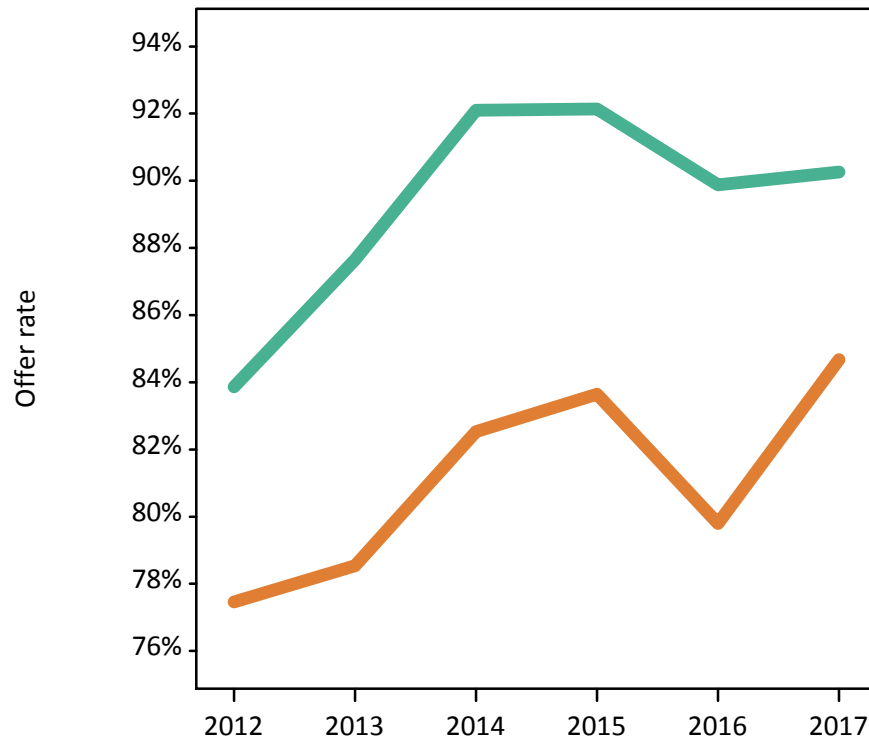
### P.4 18 year old applications by sex

Statistic	Sex	2012	2013	2014	2015	2016	2017
June deadline applications	Men	3,000	3,480	3,950	4,260	4,290	4,240
	Women	4,200	4,635	5,075	5,615	5,425	5,590
Offers	Men	2,515	3,050	3,640	3,925	3,855	3,825
	Women	3,255	3,640	4,190	4,695	4,330	4,735
Offer rate	Men	83.9%	87.6%	92.1%	92.1%	89.9%	90.3%
	Women	77.5%	78.5%	82.5%	83.6%	79.8%	84.7%
Average offer rate	Men	83.8%	87.4%	92.1%	92.5%	90.0%	90.2%
	Women	77.5%	78.7%	82.5%	83.4%	79.7%	84.7%
Percentage point difference between offer rate and average offer rate	Men	0.0	0.2	0.0	-0.4	-0.1	0.1
	Women	-0.0	-0.2	-0.0	0.3	0.1	-0.0
Contribution of group to the average offer rate	Men	0.635	0.639	0.647	0.639	0.654	0.637
	Women	0.739	0.729	0.726	0.726	0.726	0.725

### P.5 18 year old offer rate by sex

Note: The line for a group is not plotted when that group made fewer than 10 applications in any of the years from 2012-2017.

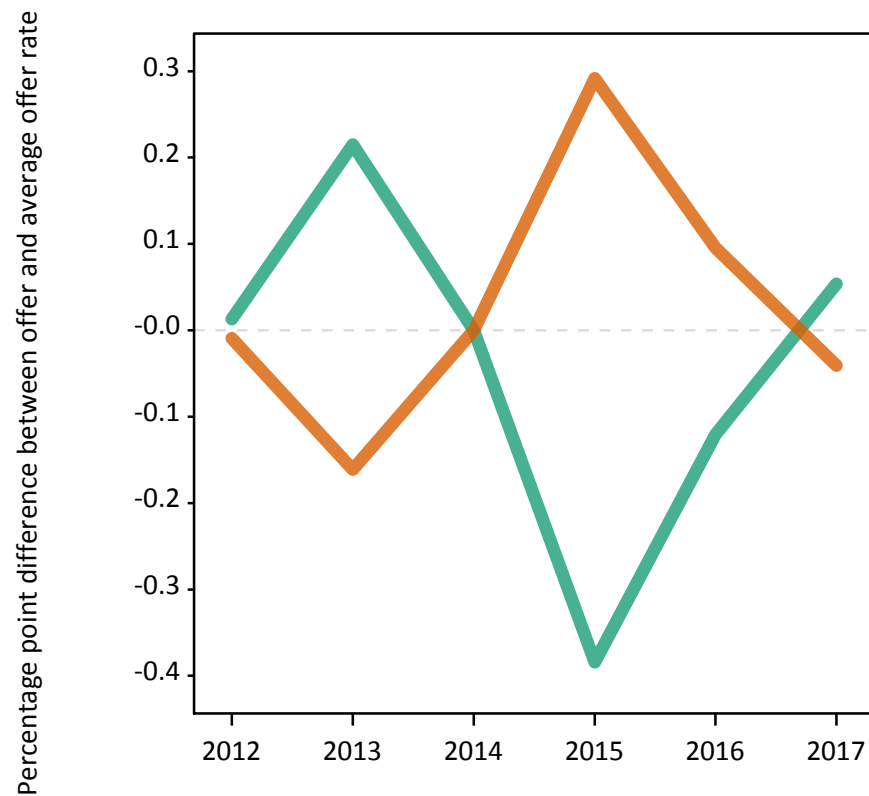
Men  
Women



### P.6 Percentage point difference between 18 year old offer rate and average offer rate by sex

Note: The line for a group is not plotted when that group made fewer than 50 applications in any of the years from 2012-2017.

Men  
Women



## P.7 18 year old applicants by POLAR3 quintile

Statistic	POLAR3 quintile	2012	2013	2014	2015	2016	2017
June deadline applicants	Quintile 1	1,220	1,410	1,485	1,645	1,700	1,675
	Quintile 2	1,500	1,735	1,900	2,130	1,960	2,070
	Quintile 3	1,435	1,540	1,700	1,860	1,830	1,780
	Quintile 4	1,380	1,550	1,710	1,855	1,860	1,895
	Quintile 5	1,240	1,435	1,640	1,855	1,695	1,630
Placed June deadline applicants	Quintile 1	185	255	250	255	310	305
	Quintile 2	245	285	305	365	335	345
	Quintile 3	225	260	270	275	290	270
	Quintile 4	215	260	270	270	310	290
	Quintile 5	175	230	255	285	280	260
All placed applicants	Quintile 1	225	305	300	315	360	335
	Quintile 2	300	340	365	440	395	390
	Quintile 3	275	305	330	335	360	320
	Quintile 4	270	310	330	315	365	335
	Quintile 5	235	270	305	345	340	295
June deadline applicants per 10,000 population	Quintile 1	85.6	101.2	106.8	117.4	126.1	126.0
	Quintile 2	100.0	117.9	129.8	143.5	135.6	145.9
	Quintile 3	92.8	101.0	113.0	121.3	121.7	119.6
	Quintile 4	86.8	99.1	111.0	118.4	120.3	123.9
	Quintile 5	73.9	86.9	100.5	110.8	102.7	99.3
Placed June deadline applicants per 10,000 population	Quintile 1	12.9	18.4	18.1	18.3	23.0	23.0
	Quintile 2	16.3	19.2	20.7	24.6	23.3	24.4
	Quintile 3	14.4	17.2	17.8	18.0	19.4	18.0
	Quintile 4	13.5	16.6	17.5	17.1	20.1	19.1
	Quintile 5	10.3	13.9	15.6	17.0	16.8	15.9
All placed applicants per 10,000 population	Quintile 1	15.9	21.7	21.7	22.6	26.5	25.2
	Quintile 2	19.9	23.0	25.1	29.6	27.2	27.5
	Quintile 3	17.7	19.9	21.8	21.7	23.8	21.4
	Quintile 4	17.1	19.8	21.5	20.2	23.5	22.1
	Quintile 5	14.0	16.3	18.8	20.5	20.6	18.0

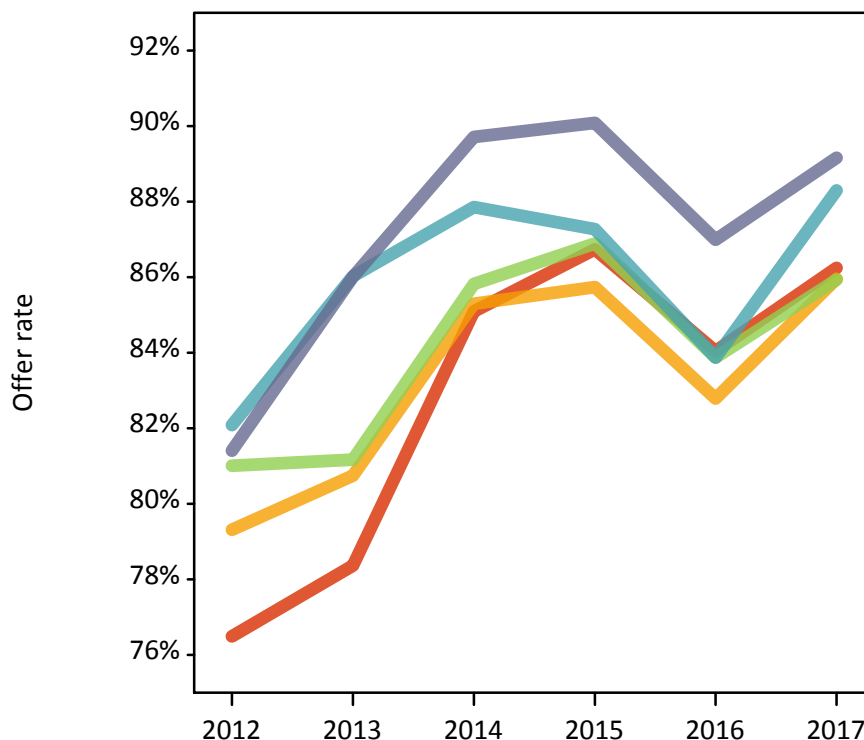
## P.8 18 year old applications by POLAR3 quintile

Statistic	POLAR3 quintile	2012	2013	2014	2015	2016	2017
June deadline applications	Quintile 1	1,300	1,505	1,625	1,750	1,855	1,845
	Quintile 2	1,605	1,825	2,035	2,270	2,125	2,265
	Quintile 3	1,505	1,635	1,815	1,970	1,940	1,925
	Quintile 4	1,455	1,630	1,810	1,925	1,970	2,050
	Quintile 5	1,320	1,510	1,730	1,945	1,800	1,725
Offers	Quintile 1	995	1,180	1,380	1,515	1,560	1,590
	Quintile 2	1,275	1,470	1,735	1,945	1,760	1,945
	Quintile 3	1,220	1,330	1,555	1,710	1,630	1,655
	Quintile 4	1,195	1,405	1,590	1,680	1,655	1,810
	Quintile 5	1,075	1,295	1,550	1,755	1,565	1,540
Offer rate	Quintile 1	76.5%	78.4%	85.1%	86.7%	84.0%	86.2%
	Quintile 2	79.3%	80.7%	85.3%	85.7%	82.8%	86.0%
	Quintile 3	81.0%	81.2%	85.8%	86.9%	83.9%	85.9%
	Quintile 4	82.1%	86.0%	87.9%	87.3%	83.9%	88.3%
	Quintile 5	81.4%	86.0%	89.7%	90.1%	87.0%	89.2%
Average offer rate	Quintile 1	78.2%	79.4%	85.3%	86.9%	84.0%	86.0%
	Quintile 2	78.8%	81.2%	85.5%	85.7%	82.9%	86.2%
	Quintile 3	80.7%	82.5%	86.5%	87.8%	84.6%	86.7%
	Quintile 4	80.9%	84.4%	87.4%	87.7%	84.4%	87.9%
	Quintile 5	82.0%	84.7%	89.0%	88.7%	85.6%	88.8%
Percentage point difference between offer rate and average offer rate	Quintile 1	-1.7	-1.1	-0.2	-0.2	0.1	0.3
	Quintile 2	0.5	-0.5	-0.2	0.0	-0.1	-0.2
	Quintile 3	0.3	-1.3	-0.7	-0.9	-0.8	-0.7
	Quintile 4	1.2	1.6	0.5	-0.4	-0.5	0.4
	Quintile 5	-0.6	1.3	0.7	1.4	1.4	0.3
Contribution of group to the average offer rate	Quintile 1	0.282	0.273	0.264	0.263	0.273	0.270
	Quintile 2	0.317	0.299	0.296	0.299	0.296	0.299
	Quintile 3	0.308	0.282	0.275	0.270	0.282	0.275
	Quintile 4	0.308	0.287	0.290	0.268	0.278	0.282
	Quintile 5	0.299	0.284	0.279	0.287	0.279	0.266

### P.9 18 year old offer rate by POLAR3 quintile

Note: The line for a group is not plotted when that group made fewer than 10 applications in any of the years from 2012-2017.

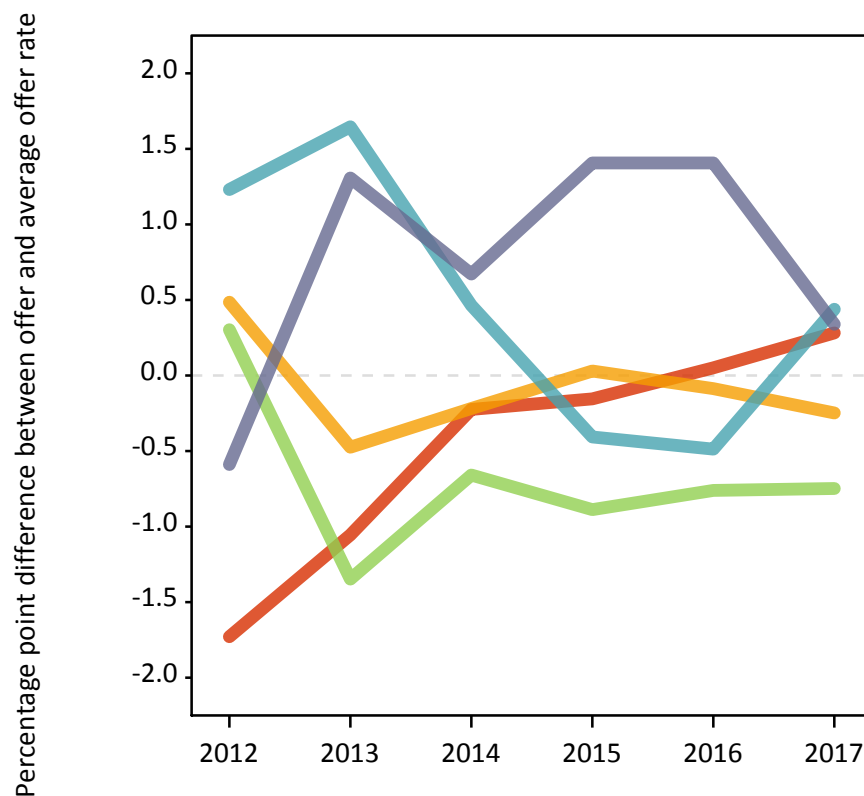
- Quintile 1
- Quintile 2
- Quintile 3
- Quintile 4
- Quintile 5



### P.10 Percentage point difference between 18 year old offer rate and average offer rate by POLAR3 quintile

Note: The line for a group is not plotted when that group made fewer than 50 applications in any of the years from 2012-2017.

- Quintile 1
- Quintile 2
- Quintile 3
- Quintile 4
- Quintile 5



## P.11 18 year old applicants by ethnic group

Statistic	Ethnic group	2012	2013	2014	2015	2016	2017
June deadline applicants	Asian	550	690	775	830	910	920
	Black	260	340	400	505	425	445
	Mixed	200	260	265	340	330	320
	White	5,735	6,345	6,940	7,590	7,305	7,285
	Other	25	40	50	70	70	70
Placed June deadline applicants	Asian	55	80	85	105	110	95
	Black	35	50	55	55	50	55
	Mixed	25	35	45	45	35	50
	White	925	1,115	1,155	1,230	1,315	1,260
	Other	0	5	5	15	10	10
All placed applicants	Asian	95	120	120	145	165	125
	Black	55	70	90	75	80	75
	Mixed	35	45	60	60	50	55
	White	1,115	1,285	1,355	1,440	1,500	1,405
	Other	5	5	10	20	15	15
June deadline applicants per 10,000 population	Asian	84.8	104.6	114.0	117.4	126.3	125.0
	Black	92.3	113.8	132.6	158.0	135.4	140.8
	Mixed	77.2	96.5	91.8	110.6	104.6	100.3
	White	88.8	100.8	112.5	121.8	120.8	122.7
	Other	30.5	45.2	53.7	70.5	69.3	68.0
Placed June deadline applicants per 10,000 population	Asian	8.6	12.4	12.2	14.7	15.6	13.2
	Black	11.7	17.2	17.8	16.6	16.0	18.1
	Mixed	10.4	13.3	16.3	15.2	11.8	15.3
	White	14.3	17.7	18.7	19.7	21.7	21.2
	Other	0.0	5.5	6.4	15.6	10.0	11.6
All placed applicants per 10,000 population	Asian	14.8	18.0	17.8	20.8	22.8	17.0
	Black	19.9	23.9	29.7	23.2	25.9	23.5
	Mixed	13.4	15.9	21.6	19.5	16.2	17.8
	White	17.3	20.4	21.9	23.1	24.8	23.7
	Other	3.4	5.5	8.6	19.7	13.1	14.6



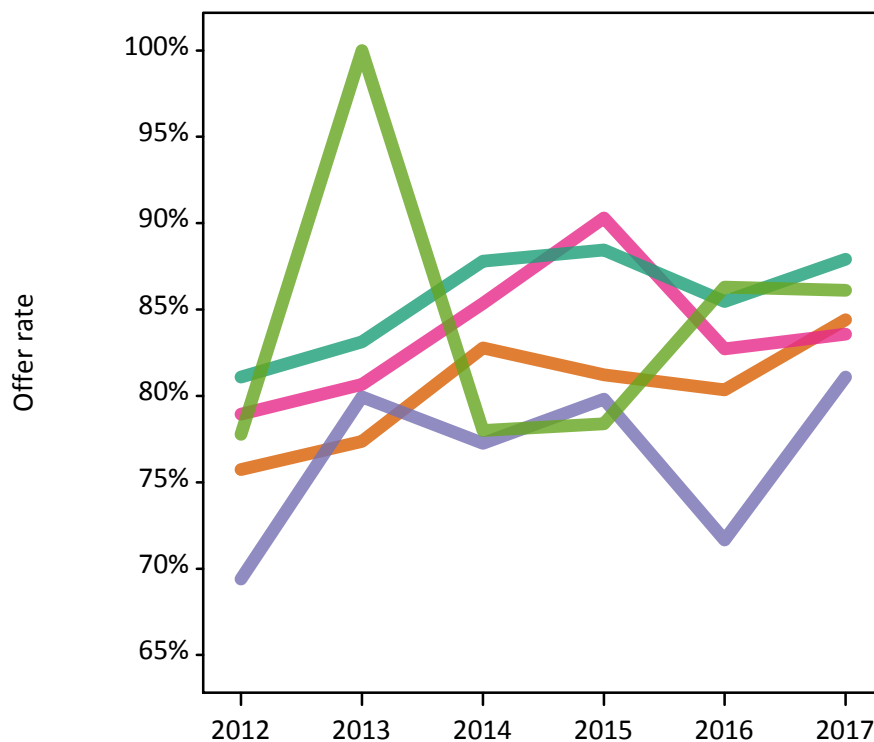
## P.12 18 year old applications by ethnic group

Statistic	Ethnic group	2012	2013	2014	2015	2016	2017
June deadline applications	Asian	585	715	830	885	970	960
	Black	270	345	420	515	435	455
	Mixed	210	270	275	360	355	345
	White	6,095	6,735	7,425	8,010	7,855	7,960
	Other	25	40	50	75	75	70
Offers	Asian	445	555	685	720	780	810
	Black	185	275	325	410	310	370
	Mixed	165	215	235	325	290	290
	White	4,945	5,600	6,520	7,085	6,710	7,000
	Other	20	35	40	60	65	60
Offer rate	Asian	75.7%	77.4%	82.8%	81.2%	80.3%	84.4%
	Black	69.4%	79.9%	77.3%	79.8%	71.7%	81.1%
	Mixed	78.9%	80.7%	85.3%	90.3%	82.7%	83.6%
	White	81.1%	83.1%	87.8%	88.5%	85.5%	87.9%
	Other	77.8%	100.0%	78.0%	78.4%	86.3%	86.1%
Average offer rate	Asian	78.8%	82.4%	85.2%	84.0%	81.5%	85.9%
	Black	75.0%	81.9%	82.5%	83.8%	77.9%	84.4%
	Mixed	81.8%	83.2%	85.1%	90.1%	84.9%	86.7%
	White	80.4%	82.4%	87.2%	87.8%	84.9%	87.4%
	Other	83.7%	85.6%	79.9%	86.9%	86.7%	87.0%
Percentage point difference between offer rate and average offer rate	Asian	-3.0	-5.0	-2.4	-2.8	-1.2	-1.5
	Black	-5.6	-1.9	-5.2	-4.0	-6.3	-3.3
	Mixed	-2.9	-2.6	0.2	0.2	-2.2	-3.1
	White	0.7	0.7	0.6	0.7	0.6	0.5
	Other	N/A	N/A	-1.9	-8.6	-0.4	-0.9
Contribution of group to the average offer rate	Asian	0.222	0.225	0.230	0.222	0.239	0.230
	Black	0.183	0.169	0.151	0.171	0.142	0.151
	Mixed	0.170	0.148	0.116	0.130	0.142	0.126
	White	0.874	0.857	0.850	0.841	0.841	0.840
	Other	0.126	0.093	0.114	0.106	0.153	0.124

### P.13 18 year old offer rate by ethnic group

Note: The line for a group is not plotted when that group made fewer than 10 applications in any of the years from 2012-2017.

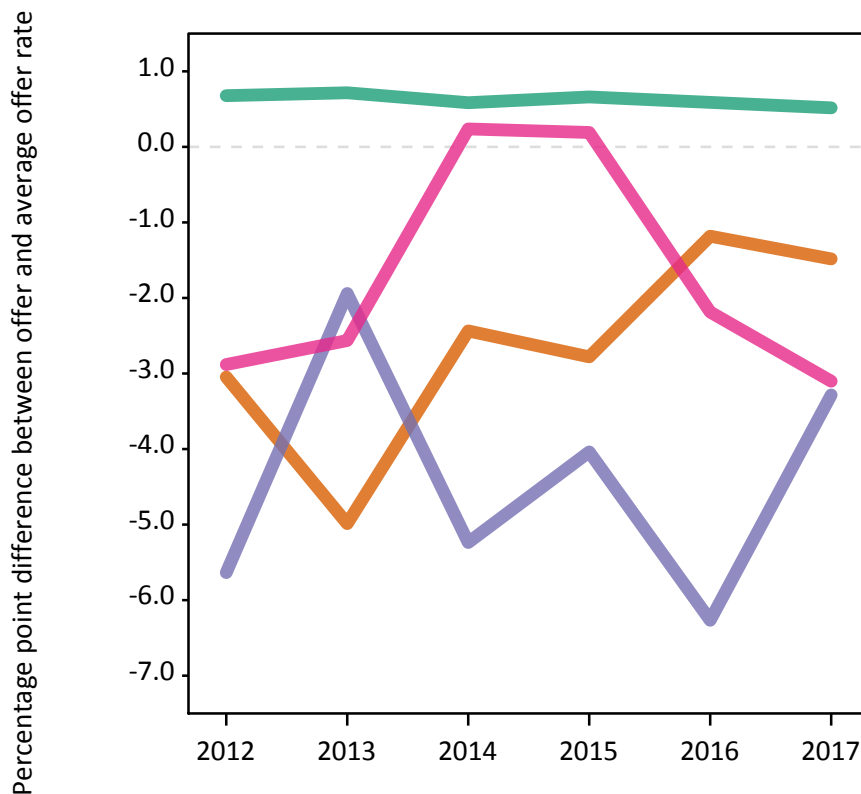
- Asian
- Black
- Mixed
- White
- Other



### P.14 Percentage point difference between 18 year old offer rate and average offer rate by ethnic group

Note: The line for a group is not plotted when that group made fewer than 50 applications in any of the years from 2012-2017.

- Asian
- Black
- Mixed
- White
- Other



### P.15 Applicants (all ages)

Statistic	2012	2013	2014	2015	2016	2017
June deadline applicants	13,930	15,170	16,710	17,655	17,430	16,380
Placed June deadline applicants	2,295	2,590	2,810	2,810	3,135	3,080
All placed applicants	2,860	3,030	3,465	3,450	3,815	3,670

### P.16 Applications (all ages)

Statistic	2012	2013	2014	2015	2016	2017
June deadline applications	15,145	16,315	18,095	18,950	18,965	18,065
Offers	10,080	11,360	13,470	14,345	13,840	14,200
Offer rate	66.6%	69.6%	74.4%	75.7%	73.0%	78.6%

### P.17 Applicants (all ages) by sex

Statistic	Sex	2012	2013	2014	2015	2016	2017
June deadline applicants	Men	5,890	6,335	7,075	7,660	7,420	6,980
	Women	8,040	8,835	9,635	9,995	10,010	9,395
Placed June deadline applicants	Men	1,015	1,115	1,265	1,220	1,295	1,230
	Women	1,280	1,475	1,545	1,590	1,840	1,850
All placed applicants	Men	1,300	1,315	1,605	1,535	1,625	1,470
	Women	1,560	1,715	1,865	1,920	2,190	2,195

### P.18 Applications (all ages) by sex

Statistic	Sex	2012	2013	2014	2015	2016	2017
June deadline applications	Men	6,420	6,815	7,675	8,185	8,105	7,730
	Women	8,725	9,500	10,420	10,765	10,860	10,335
Offers	Men	4,630	5,270	6,415	6,815	6,560	6,410
	Women	5,450	6,085	7,055	7,530	7,275	7,790
Offer rate	Men	72.1%	77.4%	83.6%	83.2%	81.0%	82.9%
	Women	62.5%	64.1%	67.7%	70.0%	67.0%	75.4%

### P.19 Applicants (all ages) by POLAR3 quintile

Statistic	POLAR3 quintile	2012	2013	2014	2015	2016	2017
June deadline applicants	Quintile 1	2,910	3,240	3,455	3,575	3,760	3,430
	Quintile 2	3,180	3,480	3,810	4,120	3,910	3,810
	Quintile 3	2,870	2,985	3,280	3,495	3,495	3,130
	Quintile 4	2,585	2,840	3,160	3,255	3,210	3,135
	Quintile 5	2,350	2,605	2,970	3,180	3,015	2,830
Placed June deadline applicants	Quintile 1	495	585	630	575	735	720
	Quintile 2	505	585	625	680	695	725
	Quintile 3	485	510	545	515	595	545
	Quintile 4	430	475	530	515	570	560
	Quintile 5	380	430	470	515	530	520
All placed applicants	Quintile 1	605	685	765	715	885	855
	Quintile 2	630	685	785	820	840	850
	Quintile 3	605	595	665	655	725	680
	Quintile 4	520	555	655	615	700	665
	Quintile 5	495	505	585	635	660	610

### P.20 Applications (all ages) by POLAR3 quintile

Statistic	POLAR3 quintile	2012	2013	2014	2015	2016	2017
June deadline applications	Quintile 1	3,225	3,540	3,820	3,910	4,190	3,880
	Quintile 2	3,460	3,720	4,130	4,435	4,275	4,215
	Quintile 3	3,115	3,230	3,540	3,730	3,765	3,430
	Quintile 4	2,775	3,030	3,390	3,465	3,455	3,430
	Quintile 5	2,545	2,770	3,175	3,370	3,235	3,065
Offers	Quintile 1	1,970	2,235	2,620	2,725	2,850	2,885
	Quintile 2	2,205	2,505	2,970	3,250	3,005	3,245
	Quintile 3	2,120	2,250	2,640	2,820	2,760	2,670
	Quintile 4	1,955	2,270	2,645	2,750	2,660	2,815
	Quintile 5	1,810	2,075	2,570	2,775	2,530	2,545
Offer rate	Quintile 1	61.0%	63.2%	68.6%	69.6%	68.0%	74.3%
	Quintile 2	63.8%	67.4%	71.9%	73.3%	70.3%	77.0%
	Quintile 3	68.1%	69.6%	74.5%	75.6%	73.3%	77.9%
	Quintile 4	70.5%	74.9%	78.0%	79.5%	77.0%	82.1%
	Quintile 5	71.2%	75.0%	80.9%	82.2%	78.2%	83.1%

## P.21 Applicants (all ages) by ethnic group

Statistic	Ethnic group	2012	2013	2014	2015	2016	2017
June deadline applicants	Asian	1,355	1,525	1,650	1,760	1,870	1,795
	Black	1,300	1,460	1,615	1,815	1,790	1,580
	Mixed	475	570	625	700	710	640
	White	10,645	11,430	12,620	13,120	12,770	12,090
	Other	105	120	130	175	185	180
Placed June deadline applicants	Asian	130	160	200	200	245	245
	Black	135	140	170	160	205	230
	Mixed	75	80	110	110	125	115
	White	1,935	2,175	2,315	2,300	2,525	2,445
	Other	10	15	15	30	20	35
All placed applicants	Asian	220	235	305	300	350	335
	Black	205	200	270	255	305	320
	Mixed	95	100	145	140	160	140
	White	2,315	2,460	2,715	2,705	2,945	2,815
	Other	15	15	20	35	30	40

## P.22 Applications (all ages) by ethnic group

Statistic	Ethnic group	2012	2013	2014	2015	2016	2017
June deadline applications	Asian	1,460	1,620	1,780	1,895	2,015	1,925
	Black	1,400	1,530	1,700	1,905	1,875	1,665
	Mixed	515	610	675	745	785	695
	White	11,600	12,360	13,730	14,125	13,975	13,480
	Other	110	125	135	185	195	195
Offers	Asian	910	1,075	1,310	1,350	1,395	1,500
	Black	520	650	805	930	840	935
	Mixed	340	415	485	580	575	535
	White	8,205	9,100	10,745	11,300	10,830	11,020
	Other	70	70	85	125	130	145
Offer rate	Asian	62.1%	66.5%	73.5%	71.3%	69.3%	77.8%
	Black	37.3%	42.7%	47.2%	48.7%	44.6%	56.1%
	Mixed	65.6%	67.8%	71.9%	78.0%	73.1%	77.0%
	White	70.8%	73.6%	78.3%	80.0%	77.5%	81.7%
	Other	62.2%	56.3%	63.2%	67.4%	66.8%	75.3%

## Technical Notes and Definitions

### UCAS undergraduate scheme

#### Adjustment

Adjustment allows applicants who have met and exceeded the terms of their conditional firm offer to seek and find a place at another provider whilst keeping their place at their original firm choice provider.

#### Clearing

Clearing is a route for applicants that are not placed and holding no offers to find a place on courses with vacancies.

#### Cycle year

The UCAS application cycle which runs from September to October the following year. For example the 2017 cycle runs from September 2016 through to October 2017.

#### End of cycle

The point in the cycle to which the numbers in this report refer, and the point at which the cycle is closed such that no more applications or offers can be made, and no more applicants can be placed. Numbers reported at the end of cycle exclude information on a small number of applicants who cancelled during the cycle.

#### Extra

Applicants who are unsuccessful in obtaining an offer or decline all offers may be eligible to apply through Extra, where they can apply to one further course at a time. Extra operates from 25 February until early July. It provides applicants who are eligible the possibility of obtaining an offer before exam results are published and Clearing starts.

#### June 30 deadline

The deadline for main scheme applications. Applicants who apply after this date will go directly into Clearing.

#### Record of Prior Acceptance (RPA)

RPA is an acceptance route used when a provider informs UCAS of applicants it has accepted outside of the normal application process (e.g. individuals who have applied directly to the provider).

### Reporting groups

#### Ethnic group

High level grouping of ethnic origin as declared by the applicant: 'White', 'Black', 'Asian', 'Mixed', 'Other', 'Unknown'. Applicants who declare themselves as 'Unknown' ethnic origin are not reported in these tables, but are included in the associated csv data file.

#### POLAR3 quintile

Developed by HEFCE, POLAR3 classifies small areas across the UK into five groups according to their level of young participation in Higher Education. Each of these groups represents around 20 per cent of young people and is ranked from Quintile 1 (areas with the lowest young participation rates, considered as the most disadvantaged) to Quintile 5 (highest young participation rates, considered most advantaged). POLAR3 is based on the participation rates of young people between 2005 and 2009 who entered Higher Education between 2005-06 and 2010-11, therefore is most suitable for applicants aged 19 and under. These groups are assigned using the postcode declared by the applicant at the time of their application. If a UK postcode is invalid, considered unsafe for measurement or there is no link to Census geography possible then the applicant is not assigned to a quintile. Applicants with no POLAR3 quintile are not reported.

#### Sex

Sex as declared by the applicant.

### **SIMD 2016 quintile**

Scottish index of multiple deprivation (SIMD) identifies small area concentrations of multiple deprivation across all of Scotland, providing a relative measure of deprivation amongst 6505 small areas (data zones) based on 7 socio-economic domains. These small areas are classified into five groups ranked from Quintile 1 (considered the most deprived) to Quintile 5 (considered least deprived), with equal populations in each quintile. Quintiles are assigned using the postcode declared by the applicant, applicants declaring invalid postcodes are classified as 'Not assigned' and are not reported.

SIMD is only defined for applicants domiciled in Scotland, therefore any applicants domiciled outside of Scotland cannot be assigned to an SIMD quintile and so are not reported for this measure.

SIMD is only reported for providers in Scotland. Application and entry rates by SIMD are reported in the 2017 End of Cycle Report and the 2017 cycle January deadline application rate report.

### **Statistics reported in the tables**

#### **All placed applicants**

The number of applicants placed for entry into higher education at the provider through one of their choices, including any choices made through Extra, or via Adjustment, Clearing or RPA.

#### **All placed applicants per 10,000 population**

The number of total UK domiciled 18 year old placed applicants for entry into higher education at the provider divided by the number of UK 18 year olds in the population, multiplied by 10,000. This gives the number of 18 year olds, for every 10,000 in the population, that were placed at the provider through one of their choices, including any choices made through Extra, or via Adjustment, Clearing or RPA. It is an alternative way of expressing the entry rate to a provider. By referencing the underlying population this statistic shows how the number of placed applicants is changing in relation to the available pool of potential applicants and so gives the chance that somebody from the group will be placed at a provider.

This statistic is only reported for 18 year olds.

#### **Average offer rate**

The offer rate that you might expect if the predicted grades and subject choice of applicants were the only factors that influenced whether an applicant was made an offer by the provider. The average offer rate is calculated by dividing applicants according to their specific combination of grades (for A levels the best three predicted grades are used, for BTECs, International Baccalaureate and Scottish Highers and Advanced Highers, predicted grades along with any grades already achieved upon applying are used) and subject choice. For each combination the number of main scheme offers is divided by the number of main scheme applications, to give an overall offer rate. This is then multiplied by the number of applications made by the group for which the average offer rate is being calculated (for example POLAR3 quintile 1), to give an average number of offers for that group. These average number of offers are then added together across all combinations of predicted grade and subject and divided by the number of main scheme applications from the group to give the average offer rate.

The average offer rate does not attempt to control for any other factors that may play a part in the decision to make an offer, such as the subject of the qualifications studied, their relevance to a course, or the grade in each subject; higher numbers of A levels being studied; the exact profile of grades predicted; personal statements; teacher references; interviews; or any other criteria (such as work experience or portfolios) that may be part of the admissions decision.

This statistic is only reported for 18 year olds.



### Contribution of group to the average offer rate

The way in which the average offer rate is defined means that the pattern of application and offers of a group (for example POLAR3 quintile 1) will always contribute, in part, to the average offer rate for that group. When this contribution is large, the average offer rate will mainly reflect the patterns for the group, meaning that the value of the average offer rate will be similar to the offer rate, the percentage point difference statistic will be small, and any real difference between the offer rate and what might be expected given the predicted grades and subject choices of the applicants will be difficult to detect.

Values of the contribution of group to the average offer rate range between 0 and 1. The closer the value is to 1 the greater the contribution a group makes to its own average offer rate.

This statistic is only reported for 18 year olds.

### Placed June deadline applicants

An applicant who has been placed for entry into higher education at the provider through a June deadline application.

### Placed June deadline applicants per 10,000 population

The number of UK domiciled 18 year old placed June deadline applicants at the provider divided by the number of UK 18 year olds in the population, multiplied by 10,000. This gives the number of 18 year olds, for every 10,000 in the population, that were placed at the provider through one of their June deadline applications. It is an alternative way of expressing the entry rate to a provider, but for placed June deadline applicants only. By referencing the underlying population this statistic shows how the number of placed June deadline applicants is changing in relation to the available pool of potential 18 year old applicants and so gives the chance that somebody from the group will be placed at a provider through a June deadline application.

This statistic is only reported for 18 year olds.

### June deadline applications

An application (or choice) to a course in higher education to the provider that is made by the June 30 deadline. Each applicant can make up to five choices this way. The number of June deadline applications does not include choices made through the following routes: Clearing, Extra, Adjustment and RPAs. Applications made to October deadline courses received after the October deadline are not included in these statistics.

### June deadline applicants

The number of applicants that made at least one application to the provider by the June 30 deadline.

### June deadline applicants per 10,000 population

The number of UK domiciled 18 year old June deadline applicants to the provider divided by the number of UK 18 year olds in the population, multiplied by 10,000. This gives the number of 18 year olds, for every 10,000 in the population, who applied by the June 30 deadline. It is equivalent to the application rate. By referencing the underlying population this statistic shows how the number of June deadline applicants is changing in relation to the available pool of potential 18 year old applicants and so gives the chance that somebody from the group will apply to a provider by the June 30 deadline.

This statistic is only reported for 18 year olds.

### Offers

An offer is defined as a provider's decision in response to an application to offer a place to an applicant, often subject to the applicant satisfying academic and/or other criteria, via a June deadline application (i.e. does not cover choices made through the following routes: Clearing, Extra, Adjustment and RPAs).

### Offer rate

The number of offers made divided by the number of June deadline applications. This gives the proportion of all June deadline applications to the provider that received an offer.

### Percentage point difference between offer rate and average offer rate

The offer rate minus the average offer rate.

The percentage point difference can be compared to the expected range of statistical variation resulting from the calculation of the average offer rate using the Average Offer Rate Lookup Table. Where the value of the percentage point difference lies outside of this range, the percentage point difference may be considered to represent a real difference between the offer rate and the average offer rate.

### Other definitions

#### Age

This analysis uses country-specific age definitions that align with the cut off points for school and college cohorts within the different administrations of the UK. For England and Wales, ages are defined on the 31 August, for Northern Ireland on the 1 July and for Scotland on the 28 February the following year. Defining ages in this way matches the assignment of children to school cohorts. For applicants outside of the UK a cohort cut off of 31 August has been used. Numbers for applicants aged 17 and under are included in the tables that report numbers for all age groups. Providers in Scotland typically receive a higher proportion of applicants aged 17 and under compared to providers elsewhere in the UK.

#### Provider

A higher education provider - a university or college.

#### UK domiciled

Declared area of permanent residence within England, Northern Ireland, Scotland and Wales. Applicants from the Channel Islands and Isle of Man are not included.