

L34 University of Leicester

Cycle years: 2012 - 2017

Cycle Reference Point: End of Cycle

Applicant coverage: UK domiciled

Reporting groups: Sex, POLAR3, ethnic group

Applicant statistics: June deadline applicants, placed June deadline applicants, all placed applicants, June deadline applicants per 10,000 population, placed June deadline applicants per 10,000 population, all placed applicants per 10,000 population

Application statistics: June deadline applications, offers, offer rate, average offer rate, percentage point difference between offer rate and average offer rate, contribution of group to the average offer rate

Non-disclosure controls: To avoid the disclosure of information about any individual the following measures are taken

- Applicants, placed applicants, applications and offers are rounded to the nearest 5.
- Applicants/placed applicants per 10,000 population figures are reported as 0 if the applicant/placed applicant figures are rounded to 0.
- All statistics related to the offer rate are not reported when the number of applications for a group is less than 10. The percentage point difference between the offer rate and the average offer rate is not reported when the number of applications for a group is less than 50.
- Offer rates are reported as 0% if there are fewer than 5 offers, and 100% if the number of offers is within 5 of the number of applications. When the offer rate is reported as 0% or 100%, it is reported in italics.

Contents:

- 18 year old applicants: P.1
- 18 year old applications: P.2
- 18 year old applicants by sex: P.3
- 18 year old applications by sex: P.4
- 18 year old applicants by POLAR3 quintile: P.7
- 18 year old applications by POLAR3 quintile: P.8
- 18 year old applicants by ethnic group: P.11
- 18 year old applications by ethnic group: P.12
- Applicants (all ages): P.15
- Applications (all ages): P.16
- Applicants (all ages) by sex: P.17
- Applications (all ages) by sex: P.18
- Applicants (all ages) by POLAR3 quintile: P.19
- Applications (all ages) by POLAR3 quintile: P.20
- Applicants (all ages) by ethnic group: P.21
- Applications (all ages) by ethnic group: P.22

P.1 18 year old applicants

Statistic	2012	2013	2014	2015	2016	2017
June deadline applicants	10,390	10,870	11,455	12,325	11,775	12,565
Placed June deadline applicants	1,465	1,370	1,510	1,560	1,840	1,840
All placed applicants	1,755	1,755	1,840	2,010	2,455	2,585
June deadline applicants per 10,000 population	134.3	142.8	152.1	160.9	157.1	169.6
Placed June deadline applicants per 10,000	19.0	18.0	20.1	20.4	24.6	24.8
All placed applicants per 10,000 population	22.7	23.1	24.4	26.2	32.8	34.9

P.2 18 year old applications

Statistic	2012	2013	2014	2015	2016	2017
June deadline applications	10,770	11,225	11,740	12,605	12,035	12,890
Offers	8,930	8,965	9,690	10,625	10,340	11,335
Offer rate	82.9%	79.9%	82.5%	84.3%	85.9%	88.0%

P.3 18 year old applicants by sex

Statistic	Sex	2012	2013	2014	2015	2016	2017
June deadline applicants	Men	5,320	5,660	6,005	6,490	6,165	6,260
	Women	5,070	5,210	5,450	5,835	5,610	6,305
Placed June deadline applicants	Men	715	670	730	780	925	880
	Women	755	700	785	780	915	955
All placed applicants	Men	855	860	890	1,010	1,210	1,230
	Women	905	895	950	1,000	1,250	1,355
June deadline applicants per 10,000 population	Men	134.1	145.0	155.1	165.4	160.5	164.8
	Women	134.5	140.5	148.9	156.2	153.5	174.6
Placed June deadline applicants per 10,000 population	Men	18.0	17.2	18.8	19.9	24.1	23.2
	Women	20.0	18.8	21.4	20.8	25.0	26.5
All placed applicants per 10,000 population	Men	21.5	22.1	23.0	25.7	31.5	32.3
	Women	24.0	24.1	25.9	26.8	34.2	37.5

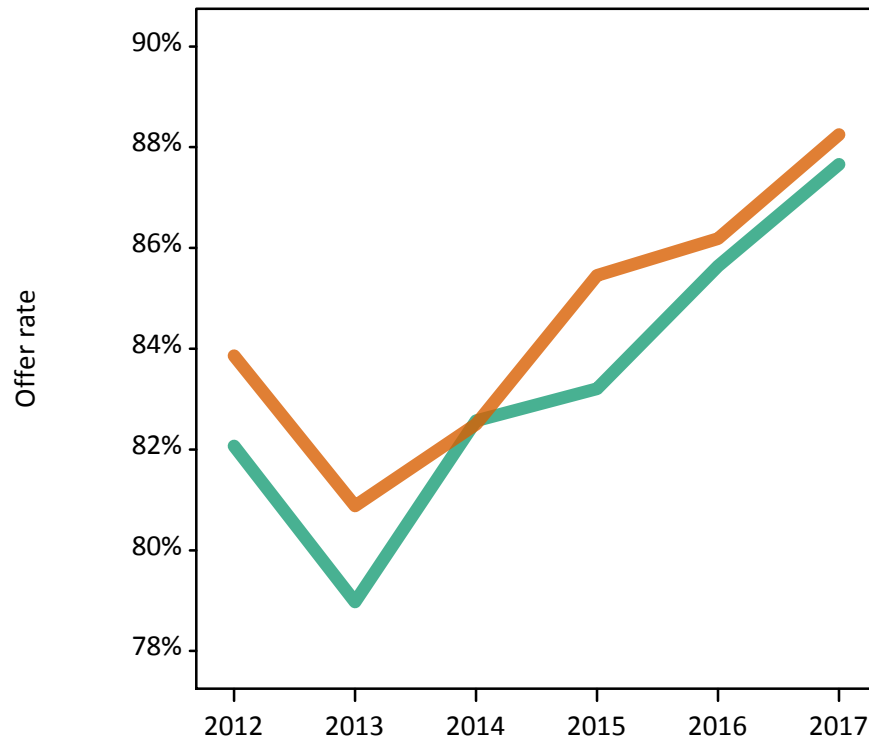
P.4 18 year old applications by sex

Statistic	Sex	2012	2013	2014	2015	2016	2017
June deadline applications	Men	5,520	5,855	6,135	6,630	6,300	6,395
	Women	5,250	5,370	5,605	5,975	5,735	6,495
Offers	Men	4,530	4,625	5,065	5,520	5,395	5,605
	Women	4,400	4,345	4,625	5,105	4,940	5,730
Offer rate	Men	82.1%	79.0%	82.6%	83.2%	85.6%	87.7%
	Women	83.9%	80.9%	82.5%	85.5%	86.2%	88.3%
Average offer rate	Men	82.2%	79.2%	82.5%	83.5%	85.9%	88.3%
	Women	83.7%	80.6%	82.6%	85.2%	85.9%	87.6%
Percentage point difference between offer rate and average offer rate	Men	-0.1	-0.3	0.1	-0.3	-0.3	-0.7
	Women	0.1	0.3	-0.1	0.3	0.3	0.7
Contribution of group to the average offer rate	Men	0.628	0.641	0.640	0.645	0.649	0.625
	Women	0.608	0.609	0.606	0.606	0.614	0.631

P.5 18 year old offer rate by sex

Note: The line for a group is not plotted when that group made fewer than 10 applications in any of the years from 2012-2017.

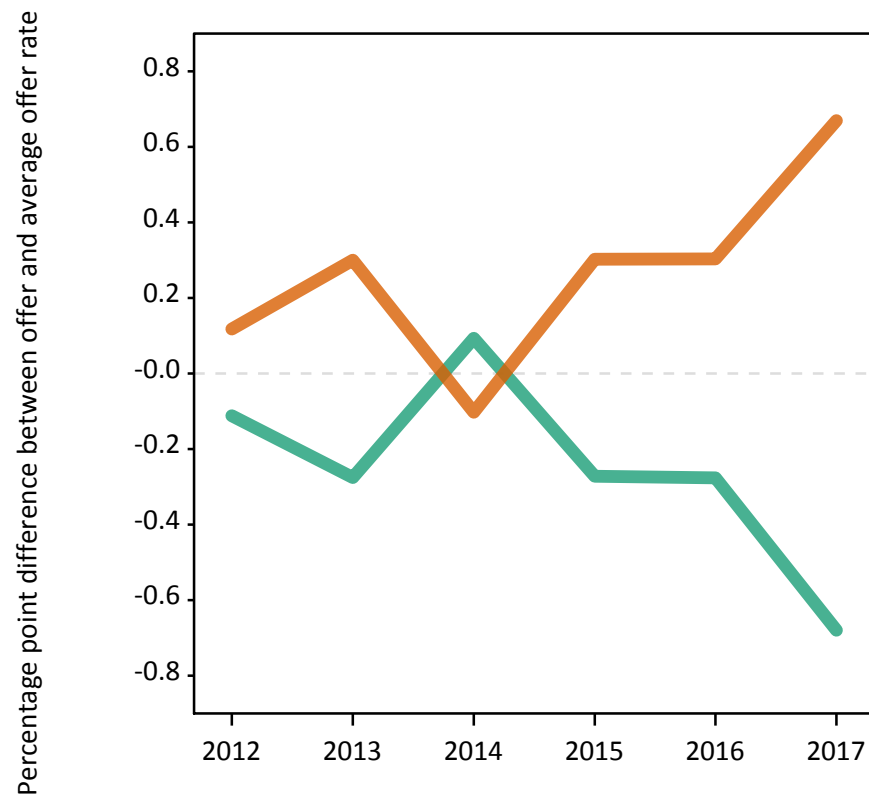
Men
Women



P.6 Percentage point difference between 18 year old offer rate and average offer rate by sex

Note: The line for a group is not plotted when that group made fewer than 50 applications in any of the years from 2012-2017.

Men
Women



P.7 18 year old applicants by POLAR3 quintile

Statistic	POLAR3 quintile	2012	2013	2014	2015	2016	2017
June deadline applicants	Quintile 1	770	865	985	1,130	1,110	1,195
	Quintile 2	1,475	1,560	1,660	1,945	1,850	2,160
	Quintile 3	1,975	2,060	2,245	2,495	2,510	2,645
	Quintile 4	2,570	2,755	2,700	2,945	2,800	2,910
	Quintile 5	3,580	3,615	3,860	3,790	3,485	3,625
Placed June deadline applicants	Quintile 1	105	120	135	130	175	180
	Quintile 2	190	190	195	250	260	295
	Quintile 3	295	265	305	315	395	380
	Quintile 4	415	375	355	385	460	455
	Quintile 5	460	420	515	480	550	525
All placed applicants	Quintile 1	130	145	155	170	220	245
	Quintile 2	215	230	250	325	345	395
	Quintile 3	345	355	380	395	515	520
	Quintile 4	490	455	425	475	620	630
	Quintile 5	570	565	625	640	755	790
June deadline applicants per 10,000 population	Quintile 1	54.0	61.9	70.9	80.6	82.1	89.9
	Quintile 2	98.2	106.0	113.3	130.9	128.1	152.1
	Quintile 3	127.9	135.2	149.0	162.5	166.9	177.7
	Quintile 4	162.0	176.3	175.1	188.2	181.4	190.6
	Quintile 5	213.2	218.6	236.6	226.5	211.1	220.8
Placed June deadline applicants per 10,000 population	Quintile 1	7.4	8.6	9.7	9.4	12.8	13.6
	Quintile 2	12.5	12.8	13.5	16.8	17.9	20.9
	Quintile 3	19.2	17.4	20.4	20.4	26.4	25.5
	Quintile 4	26.0	23.8	23.0	24.5	29.9	29.7
	Quintile 5	27.4	25.5	31.7	28.8	33.2	32.0
All placed applicants per 10,000 population	Quintile 1	9.1	10.5	11.1	12.1	16.4	18.6
	Quintile 2	14.4	15.5	17.1	22.0	23.8	27.8
	Quintile 3	22.5	23.4	25.1	25.6	34.3	34.8
	Quintile 4	31.0	29.2	27.7	30.5	40.0	41.3
	Quintile 5	33.9	34.0	38.4	38.3	45.7	48.0

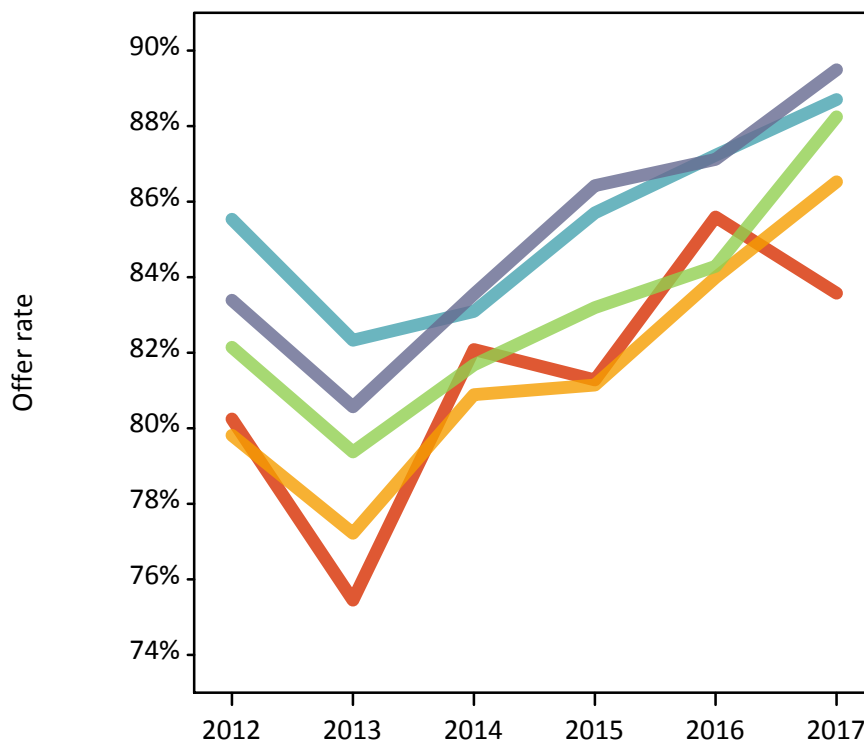
P.8 18 year old applications by POLAR3 quintile

Statistic	POLAR3 quintile	2012	2013	2014	2015	2016	2017
June deadline applications	Quintile 1	800	890	1,015	1,155	1,130	1,235
	Quintile 2	1,525	1,620	1,705	2,000	1,895	2,220
	Quintile 3	2,050	2,130	2,285	2,535	2,545	2,695
	Quintile 4	2,680	2,860	2,760	3,020	2,875	3,000
	Quintile 5	3,690	3,720	3,955	3,875	3,570	3,710
Offers	Quintile 1	640	670	835	940	970	1,035
	Quintile 2	1,220	1,250	1,380	1,620	1,590	1,920
	Quintile 3	1,685	1,690	1,870	2,110	2,145	2,380
	Quintile 4	2,295	2,355	2,295	2,590	2,505	2,660
	Quintile 5	3,080	3,000	3,305	3,345	3,110	3,320
Offer rate	Quintile 1	80.3%	75.5%	82.1%	81.3%	85.6%	83.6%
	Quintile 2	79.8%	77.2%	80.9%	81.1%	84.0%	86.5%
	Quintile 3	82.1%	79.4%	81.7%	83.2%	84.3%	88.2%
	Quintile 4	85.5%	82.3%	83.1%	85.7%	87.2%	88.7%
	Quintile 5	83.4%	80.6%	83.5%	86.4%	87.1%	89.5%
Average offer rate	Quintile 1	81.9%	77.2%	82.4%	83.4%	85.6%	85.5%
	Quintile 2	80.6%	77.8%	81.3%	82.3%	84.3%	86.5%
	Quintile 3	82.5%	80.1%	82.4%	83.3%	85.1%	88.4%
	Quintile 4	84.7%	82.0%	83.1%	85.1%	86.9%	88.5%
	Quintile 5	83.1%	79.8%	82.9%	85.6%	86.6%	88.9%
Percentage point difference between offer rate and average offer rate	Quintile 1	-1.7	-1.7	-0.4	-2.1	-0.1	-1.9
	Quintile 2	-0.8	-0.5	-0.4	-1.1	-0.3	-0.0
	Quintile 3	-0.3	-0.7	-0.7	-0.1	-0.8	-0.1
	Quintile 4	0.9	0.3	0.0	0.6	0.3	0.2
	Quintile 5	0.3	0.8	0.7	0.8	0.5	0.6
Contribution of group to the average offer rate	Quintile 1	0.148	0.144	0.154	0.154	0.167	0.160
	Quintile 2	0.206	0.212	0.205	0.218	0.218	0.226
	Quintile 3	0.252	0.243	0.257	0.254	0.271	0.266
	Quintile 4	0.297	0.303	0.288	0.288	0.289	0.279
	Quintile 5	0.393	0.383	0.388	0.359	0.352	0.347

P.9 18 year old offer rate by POLAR3 quintile

Note: The line for a group is not plotted when that group made fewer than 10 applications in any of the years from 2012-2017.

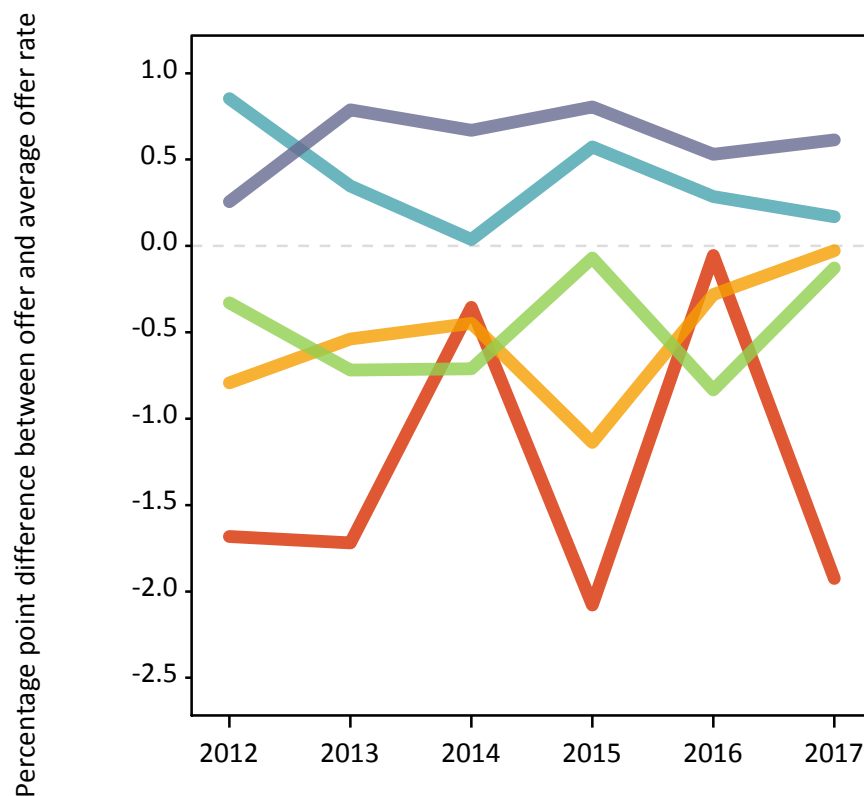
- Quintile 1
- Quintile 2
- Quintile 3
- Quintile 4
- Quintile 5



P.10 Percentage point difference between 18 year old offer rate and average offer rate by POLAR3 quintile

Note: The line for a group is not plotted when that group made fewer than 50 applications in any of the years from 2012-2017.

- Quintile 1
- Quintile 2
- Quintile 3
- Quintile 4
- Quintile 5



P.11 18 year old applicants by ethnic group

Statistic	Ethnic group	2012	2013	2014	2015	2016	2017
June deadline applicants	Asian	1,620	1,815	1,960	2,230	2,235	2,475
	Black	640	830	1,070	1,245	1,535	1,750
	Mixed	380	415	480	585	585	655
	White	7,565	7,635	7,760	8,035	7,155	7,380
	Other	120	125	115	170	170	220
Placed June deadline applicants	Asian	200	210	235	270	355	345
	Black	100	110	140	190	310	320
	Mixed	45	40	60	80	90	110
	White	1,090	990	1,065	1,000	1,045	1,030
	Other	20	10	10	15	20	20
All placed applicants	Asian	280	295	315	380	520	555
	Black	145	180	195	270	450	450
	Mixed	60	65	75	105	120	150
	White	1,235	1,190	1,230	1,220	1,305	1,370
	Other	25	15	20	25	30	40
June deadline applicants per 10,000 population	Asian	249.8	275.5	289.3	315.1	310.7	336.3
	Black	226.5	279.6	353.3	390.8	490.0	556.1
	Mixed	145.1	153.5	167.5	190.0	186.5	204.7
	White	117.2	121.3	125.8	129.0	118.3	124.4
	Other	136.7	140.1	124.6	174.3	171.8	212.6
Placed June deadline applicants per 10,000 population	Asian	30.9	31.7	34.7	38.1	49.5	47.0
	Black	36.2	37.0	46.2	59.7	99.0	101.4
	Mixed	17.7	15.2	20.9	26.3	28.9	34.6
	White	16.9	15.8	17.2	16.1	17.2	17.4
	Other	21.5	9.9	8.6	13.5	21.1	17.5
All placed applicants per 10,000 population	Asian	43.1	44.6	46.3	53.4	72.3	75.4
	Black	51.5	60.6	63.7	85.4	144.4	142.7
	Mixed	23.0	23.3	26.4	34.4	38.5	46.7
	White	19.1	18.9	20.0	19.6	21.6	23.1
	Other	28.3	18.7	19.3	23.9	30.1	36.9

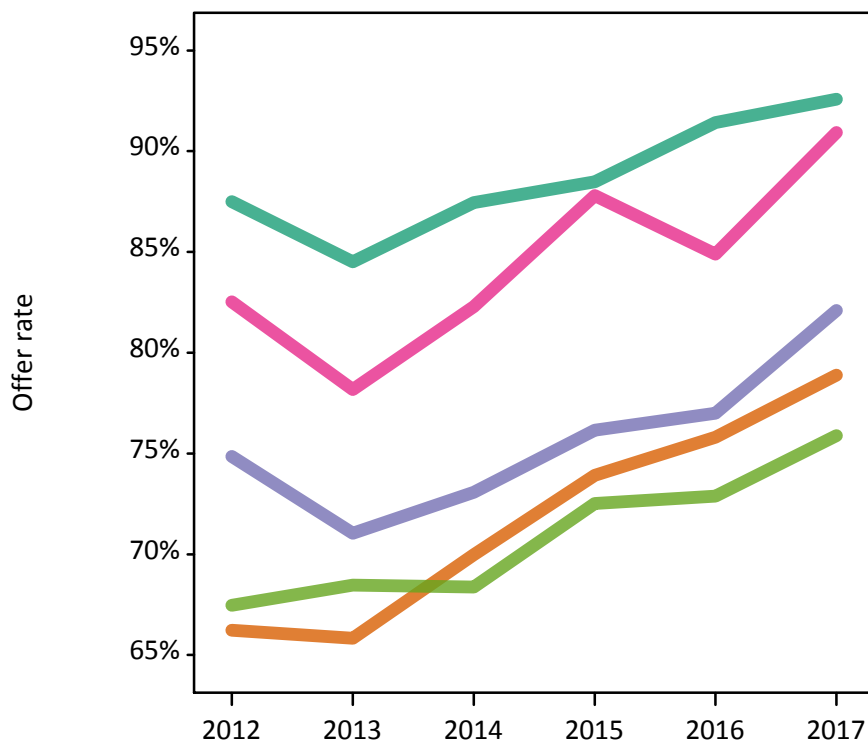
P.12 18 year old applications by ethnic group

Statistic	Ethnic group	2012	2013	2014	2015	2016	2017
June deadline applications	Asian	1,690	1,880	2,030	2,310	2,310	2,570
	Black	650	855	1,090	1,260	1,550	1,780
	Mixed	395	425	495	600	595	670
	White	7,840	7,885	7,940	8,205	7,305	7,555
	Other	125	130	115	170	175	225
Offers	Asian	1,120	1,240	1,420	1,705	1,750	2,030
	Black	485	605	795	960	1,195	1,465
	Mixed	325	335	410	525	505	610
	White	6,860	6,665	6,940	7,260	6,675	6,995
	Other	85	90	80	125	130	170
Offer rate	Asian	66.2%	65.8%	70.0%	73.9%	75.8%	78.9%
	Black	74.8%	71.0%	73.1%	76.1%	77.0%	82.1%
	Mixed	82.5%	78.2%	82.3%	87.8%	84.9%	90.9%
	White	87.5%	84.5%	87.4%	88.5%	91.4%	92.6%
	Other	67.5%	68.5%	68.4%	72.5%	72.9%	75.9%
Average offer rate	Asian	69.1%	67.1%	71.6%	75.0%	77.6%	79.4%
	Black	77.5%	73.2%	76.4%	78.2%	80.3%	85.1%
	Mixed	81.2%	79.6%	81.8%	87.2%	86.3%	89.5%
	White	86.7%	83.9%	86.5%	87.8%	89.9%	91.7%
	Other	67.2%	72.3%	72.5%	74.3%	77.0%	80.0%
Percentage point difference between offer rate and average offer rate	Asian	-2.9	-1.3	-1.6	-1.1	-1.8	-0.5
	Black	-2.6	-2.1	-3.3	-2.0	-3.3	-3.0
	Mixed	1.3	-1.4	0.5	0.6	-1.4	1.4
	White	0.8	0.6	1.0	0.6	1.5	0.9
	Other	0.3	-3.9	-4.1	-1.8	-4.1	-4.1
Contribution of group to the average offer rate	Asian	0.287	0.290	0.298	0.297	0.303	0.315
	Black	0.181	0.203	0.241	0.228	0.258	0.255
	Mixed	0.110	0.099	0.104	0.117	0.125	0.115
	White	0.779	0.758	0.741	0.715	0.685	0.668
	Other	0.136	0.102	0.085	0.090	0.086	0.082

P.13 18 year old offer rate by ethnic group

Note: The line for a group is not plotted when that group made fewer than 10 applications in any of the years from 2012-2017.

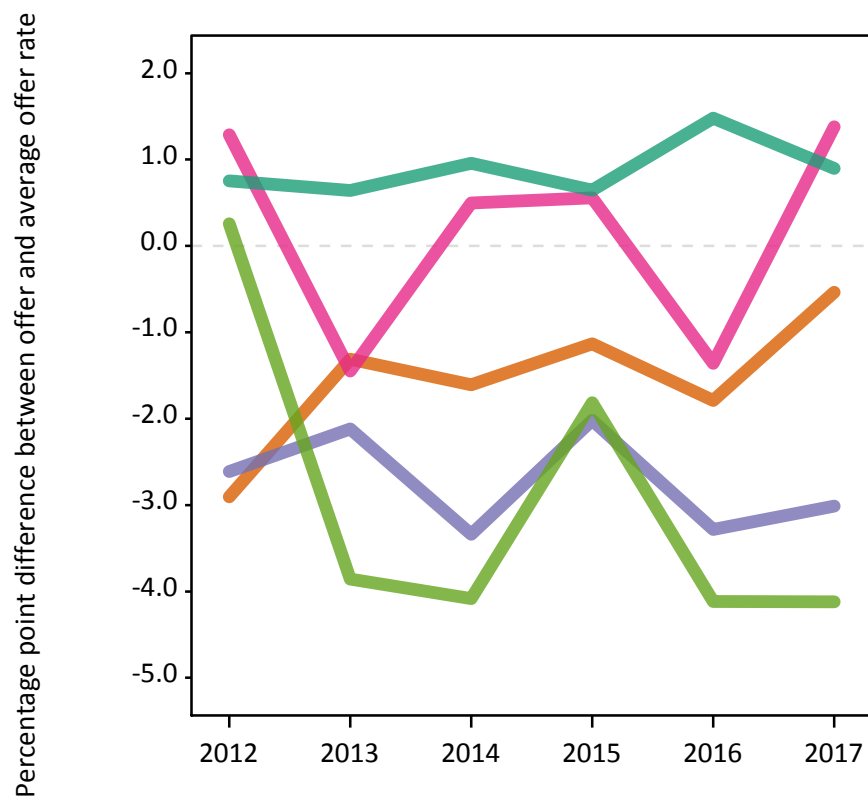
- Asian
- Black
- Mixed
- White
- Other



P.14 Percentage point difference between 18 year old offer rate and average offer rate by ethnic group

Note: The line for a group is not plotted when that group made fewer than 50 applications in any of the years from 2012-2017.

- Asian
- Black
- Mixed
- White
- Other



P.15 Applicants (all ages)

Statistic	2012	2013	2014	2015	2016	2017
June deadline applicants	15,180	15,890	17,020	18,420	17,560	18,050
Placed June deadline applicants	2,065	1,935	2,175	2,315	2,630	2,540
All placed applicants	2,485	2,525	2,700	2,995	3,540	3,555

P.16 Applications (all ages)

Statistic	2012	2013	2014	2015	2016	2017
June deadline applications	15,790	16,460	17,560	19,000	18,020	18,595
Offers	11,395	11,690	12,880	14,260	14,200	14,905
Offer rate	72.2%	71.0%	73.4%	75.1%	78.8%	80.2%

P.17 Applicants (all ages) by sex

Statistic	Sex	2012	2013	2014	2015	2016	2017
June deadline applicants	Men	7,850	8,390	8,995	9,985	9,525	9,355
	Women	7,330	7,500	8,025	8,430	8,035	8,695
Placed June deadline applicants	Men	1,025	965	1,075	1,210	1,355	1,255
	Women	1,045	975	1,100	1,105	1,280	1,285
All placed applicants	Men	1,225	1,270	1,345	1,565	1,810	1,755
	Women	1,260	1,255	1,355	1,430	1,730	1,800

P.18 Applications (all ages) by sex

Statistic	Sex	2012	2013	2014	2015	2016	2017
June deadline applications	Men	8,165	8,690	9,260	10,275	9,765	9,595
	Women	7,625	7,770	8,295	8,725	8,255	9,000
Offers	Men	5,885	6,185	6,875	7,705	7,660	7,585
	Women	5,510	5,505	6,005	6,555	6,540	7,320
Offer rate	Men	72.1%	71.2%	74.2%	75.0%	78.5%	79.0%
	Women	72.3%	70.8%	72.4%	75.1%	79.2%	81.4%

P.19 Applicants (all ages) by POLAR3 quintile

Statistic	POLAR3 quintile	2012	2013	2014	2015	2016	2017
June deadline applicants	Quintile 1	1,370	1,450	1,665	1,750	1,755	1,870
	Quintile 2	2,330	2,375	2,625	2,965	2,810	3,165
	Quintile 3	2,950	3,085	3,325	3,725	3,815	3,760
	Quintile 4	3,560	3,865	3,990	4,345	4,055	4,150
	Quintile 5	4,930	5,090	5,395	5,595	5,085	5,060
Placed June deadline applicants	Quintile 1	170	185	205	195	240	260
	Quintile 2	285	265	300	375	370	400
	Quintile 3	415	370	435	460	570	525
	Quintile 4	550	500	530	575	640	620
	Quintile 5	645	615	705	710	805	730
All placed applicants	Quintile 1	205	225	245	255	315	350
	Quintile 2	335	325	385	485	490	555
	Quintile 3	490	510	555	590	745	715
	Quintile 4	655	630	640	725	870	845
	Quintile 5	795	830	870	935	1,110	1,075

P.20 Applications (all ages) by POLAR3 quintile

Statistic	POLAR3 quintile	2012	2013	2014	2015	2016	2017
June deadline applications	Quintile 1	1,430	1,510	1,735	1,810	1,810	1,940
	Quintile 2	2,430	2,465	2,710	3,070	2,890	3,260
	Quintile 3	3,060	3,195	3,410	3,810	3,885	3,845
	Quintile 4	3,740	4,015	4,125	4,500	4,185	4,295
	Quintile 5	5,090	5,250	5,555	5,765	5,215	5,210
Offers	Quintile 1	890	955	1,195	1,280	1,360	1,410
	Quintile 2	1,625	1,645	1,875	2,220	2,180	2,535
	Quintile 3	2,190	2,210	2,455	2,830	3,025	3,090
	Quintile 4	2,830	2,975	3,085	3,425	3,370	3,510
	Quintile 5	3,840	3,890	4,260	4,475	4,240	4,325
Offer rate	Quintile 1	62.1%	63.2%	68.8%	70.9%	75.1%	72.8%
	Quintile 2	66.8%	66.8%	69.2%	72.4%	75.4%	77.7%
	Quintile 3	71.5%	69.1%	72.0%	74.2%	77.9%	80.4%
	Quintile 4	75.7%	74.1%	74.8%	76.1%	80.5%	81.7%
	Quintile 5	75.5%	74.1%	76.7%	77.6%	81.3%	83.1%

P.21 Applicants (all ages) by ethnic group

Statistic	Ethnic group	2012	2013	2014	2015	2016	2017
June deadline applicants	Asian	2,710	3,040	3,270	3,790	3,735	3,930
	Black	1,430	1,605	1,935	2,175	2,605	2,850
	Mixed	580	645	765	900	895	950
	White	10,090	10,255	10,695	11,085	9,810	9,755
	Other	230	240	230	320	340	395
Placed June deadline applicants	Asian	325	335	370	465	560	545
	Black	165	170	210	300	440	440
	Mixed	75	65	90	120	125	150
	White	1,450	1,335	1,475	1,395	1,430	1,340
	Other	30	15	15	20	40	35
All placed applicants	Asian	445	485	520	655	835	850
	Black	230	275	300	435	655	630
	Mixed	100	95	115	155	175	205
	White	1,650	1,625	1,715	1,690	1,775	1,770
	Other	40	30	30	35	55	65

P.22 Applications (all ages) by ethnic group

Statistic	Ethnic group	2012	2013	2014	2015	2016	2017
June deadline applications	Asian	2,840	3,160	3,400	3,955	3,865	4,095
	Black	1,470	1,645	1,970	2,225	2,650	2,900
	Mixed	610	660	795	920	905	985
	White	10,480	10,640	11,025	11,415	10,060	10,025
	Other	240	245	230	330	355	410
Offers	Asian	1,600	1,835	2,120	2,590	2,700	2,920
	Black	760	885	1,150	1,445	1,815	2,040
	Mixed	440	460	580	710	710	805
	White	8,375	8,315	8,815	9,240	8,600	8,750
	Other	130	130	145	190	245	275
Offer rate	Asian	56.4%	58.2%	62.4%	65.5%	69.9%	71.3%
	Black	51.6%	53.8%	58.2%	65.0%	68.4%	70.4%
	Mixed	72.4%	69.8%	72.8%	77.1%	78.4%	81.7%
	White	79.9%	78.2%	80.0%	80.9%	85.5%	87.3%
	Other	53.9%	53.0%	62.2%	56.8%	68.5%	66.5%

Technical Notes and Definitions

UCAS undergraduate scheme

Adjustment

Adjustment allows applicants who have met and exceeded the terms of their conditional firm offer to seek and find a place at another provider whilst keeping their place at their original firm choice provider.

Clearing

Clearing is a route for applicants that are not placed and holding no offers to find a place on courses with vacancies.

Cycle year

The UCAS application cycle which runs from September to October the following year. For example the 2017 cycle runs from September 2016 through to October 2017.

End of cycle

The point in the cycle to which the numbers in this report refer, and the point at which the cycle is closed such that no more applications or offers can be made, and no more applicants can be placed. Numbers reported at the end of cycle exclude information on a small number of applicants who cancelled during the cycle.

Extra

Applicants who are unsuccessful in obtaining an offer or decline all offers may be eligible to apply through Extra, where they can apply to one further course at a time. Extra operates from 25 February until early July. It provides applicants who are eligible the possibility of obtaining an offer before exam results are published and Clearing starts.

June 30 deadline

The deadline for main scheme applications. Applicants who apply after this date will go directly into Clearing.

Record of Prior Acceptance (RPA)

RPA is an acceptance route used when a provider informs UCAS of applicants it has accepted outside of the normal application process (e.g. individuals who have applied directly to the provider).

Reporting groups

Ethnic group

High level grouping of ethnic origin as declared by the applicant: 'White', 'Black', 'Asian', 'Mixed', 'Other', 'Unknown'. Applicants who declare themselves as 'Unknown' ethnic origin are not reported in these tables, but are included in the associated csv data file.

POLAR3 quintile

Developed by HEFCE, POLAR3 classifies small areas across the UK into five groups according to their level of young participation in Higher Education. Each of these groups represents around 20 per cent of young people and is ranked from Quintile 1 (areas with the lowest young participation rates, considered as the most disadvantaged) to Quintile 5 (highest young participation rates, considered most advantaged). POLAR3 is based on the participation rates of young people between 2005 and 2009 who entered Higher Education between 2005-06 and 2010-11, therefore is most suitable for applicants aged 19 and under. These groups are assigned using the postcode declared by the applicant at the time of their application. If a UK postcode is invalid, considered unsafe for measurement or there is no link to Census geography possible then the applicant is not assigned to a quintile. Applicants with no POLAR3 quintile are not reported.

Sex

Sex as declared by the applicant.

SIMD 2016 quintile

Scottish index of multiple deprivation (SIMD) identifies small area concentrations of multiple deprivation across all of Scotland, providing a relative measure of deprivation amongst 6505 small areas (data zones) based on 7 socio-economic domains. These small areas are classified into five groups ranked from Quintile 1 (considered the most deprived) to Quintile 5 (considered least deprived), with equal populations in each quintile. Quintiles are assigned using the postcode declared by the applicant, applicants declaring invalid postcodes are classified as 'Not assigned' and are not reported.

SIMD is only defined for applicants domiciled in Scotland, therefore any applicants domiciled outside of Scotland cannot be assigned to an SIMD quintile and so are not reported for this measure.

SIMD is only reported for providers in Scotland. Application and entry rates by SIMD are reported in the 2017 End of Cycle Report and the 2017 cycle January deadline application rate report.

Statistics reported in the tables

All placed applicants

The number of applicants placed for entry into higher education at the provider through one of their choices, including any choices made through Extra, or via Adjustment, Clearing or RPA.

All placed applicants per 10,000 population

The number of total UK domiciled 18 year old placed applicants for entry into higher education at the provider divided by the number of UK 18 year olds in the population, multiplied by 10,000. This gives the number of 18 year olds, for every 10,000 in the population, that were placed at the provider through one of their choices, including any choices made through Extra, or via Adjustment, Clearing or RPA. It is an alternative way of expressing the entry rate to a provider. By referencing the underlying population this statistic shows how the number of placed applicants is changing in relation to the available pool of potential applicants and so gives the chance that somebody from the group will be placed at a provider.

This statistic is only reported for 18 year olds.

Average offer rate

The offer rate that you might expect if the predicted grades and subject choice of applicants were the only factors that influenced whether an applicant was made an offer by the provider. The average offer rate is calculated by dividing applicants according to their specific combination of grades (for A levels the best three predicted grades are used, for BTECs, International Baccalaureate and Scottish Highers and Advanced Highers, predicted grades along with any grades already achieved upon applying are used) and subject choice. For each combination the number of main scheme offers is divided by the number of main scheme applications, to give an overall offer rate. This is then multiplied by the number of applications made by the group for which the average offer rate is being calculated (for example POLAR3 quintile 1), to give an average number of offers for that group. These average number of offers are then added together across all combinations of predicted grade and subject and divided by the number of main scheme applications from the group to give the average offer rate.

The average offer rate does not attempt to control for any other factors that may play a part in the decision to make an offer, such as the subject of the qualifications studied, their relevance to a course, or the grade in each subject; higher numbers of A levels being studied; the exact profile of grades predicted; personal statements; teacher references; interviews; or any other criteria (such as work experience or portfolios) that may be part of the admissions decision.

This statistic is only reported for 18 year olds.

Contribution of group to the average offer rate

The way in which the average offer rate is defined means that the pattern of application and offers of a group (for example POLAR3 quintile 1) will always contribute, in part, to the average offer rate for that group. When this contribution is large, the average offer rate will mainly reflect the patterns for the group, meaning that the value of the average offer rate will be similar to the offer rate, the percentage point difference statistic will be small, and any real difference between the offer rate and what might be expected given the predicted grades and subject choices of the applicants will be difficult to detect.

Values of the contribution of group to the average offer rate range between 0 and 1. The closer the value is to 1 the greater the contribution a group makes to its own average offer rate.

This statistic is only reported for 18 year olds.

Placed June deadline applicants

An applicant who has been placed for entry into higher education at the provider through a June deadline application.

Placed June deadline applicants per 10,000 population

The number of UK domiciled 18 year old placed June deadline applicants at the provider divided by the number of UK 18 year olds in the population, multiplied by 10,000. This gives the number of 18 year olds, for every 10,000 in the population, that were placed at the provider through one of their June deadline applications. It is an alternative way of expressing the entry rate to a provider, but for placed June deadline applicants only. By referencing the underlying population this statistic shows how the number of placed June deadline applicants is changing in relation to the available pool of potential 18 year old applicants and so gives the chance that somebody from the group will be placed at a provider through a June deadline application.

This statistic is only reported for 18 year olds.

June deadline applications

An application (or choice) to a course in higher education to the provider that is made by the June 30 deadline. Each applicant can make up to five choices this way. The number of June deadline applications does not include choices made through the following routes: Clearing, Extra, Adjustment and RPAs. Applications made to October deadline courses received after the October deadline are not included in these statistics.

June deadline applicants

The number of applicants that made at least one application to the provider by the June 30 deadline.

June deadline applicants per 10,000 population

The number of UK domiciled 18 year old June deadline applicants to the provider divided by the number of UK 18 year olds in the population, multiplied by 10,000. This gives the number of 18 year olds, for every 10,000 in the population, who applied by the June 30 deadline. It is equivalent to the application rate. By referencing the underlying population this statistic shows how the number of June deadline applicants is changing in relation to the available pool of potential 18 year old applicants and so gives the chance that somebody from the group will apply to a provider by the June 30 deadline.

This statistic is only reported for 18 year olds.

Offers

An offer is defined as a provider's decision in response to an application to offer a place to an applicant, often subject to the applicant satisfying academic and/or other criteria, via a June deadline application (i.e. does not cover choices made through the following routes: Clearing, Extra, Adjustment and RPAs).

Offer rate

The number of offers made divided by the number of June deadline applications. This gives the proportion of all June deadline applications to the provider that received an offer.

Percentage point difference between offer rate and average offer rate

The offer rate minus the average offer rate.

The percentage point difference can be compared to the expected range of statistical variation resulting from the calculation of the average offer rate using the Average Offer Rate Lookup Table. Where the value of the percentage point difference lies outside of this range, the percentage point difference may be considered to represent a real difference between the offer rate and the average offer rate.

Other definitions

Age

This analysis uses country-specific age definitions that align with the cut off points for school and college cohorts within the different administrations of the UK. For England and Wales, ages are defined on the 31 August, for Northern Ireland on the 1 July and for Scotland on the 28 February the following year. Defining ages in this way matches the assignment of children to school cohorts. For applicants outside of the UK a cohort cut off of 31 August has been used. Numbers for applicants aged 17 and under are included in the tables that report numbers for all age groups. Providers in Scotland typically receive a higher proportion of applicants aged 17 and under compared to providers elsewhere in the UK.

Provider

A higher education provider - a university or college.

UK domiciled

Declared area of permanent residence within England, Northern Ireland, Scotland and Wales. Applicants from the Channel Islands and Isle of Man are not included.