

O66 Oxford Brookes University

Cycle years: 2012 - 2017

Cycle Reference Point: End of Cycle

Applicant coverage: UK domiciled

Reporting groups: Sex, POLAR3, ethnic group

Applicant statistics: June deadline applicants, placed June deadline applicants, all placed applicants, June deadline applicants per 10,000 population, placed June deadline applicants per 10,000 population, all placed applicants per 10,000 population

Application statistics: June deadline applications, offers, offer rate, average offer rate, percentage point difference between offer rate and average offer rate, contribution of group to the average offer rate

Non-disclosure controls: To avoid the disclosure of information about any individual the following measures are taken

- Applicants, placed applicants, applications and offers are rounded to the nearest 5.
- Applicants/placed applicants per 10,000 population figures are reported as 0 if the applicant/placed applicant figures are rounded to 0.
- All statistics related to the offer rate are not reported when the number of applications for a group is less than 10. The percentage point difference between the offer rate and the average offer rate is not reported when the number of applications for a group is less than 50.
- Offer rates are reported as 0% if there are fewer than 5 offers, and 100% if the number of offers is within 5 of the number of applications. When the offer rate is reported as 0% or 100%, it is reported in italics.

Contents:

- 18 year old applicants: P.1
- 18 year old applications: P.2
- 18 year old applicants by sex: P.3
- 18 year old applications by sex: P.4
- 18 year old applicants by POLAR3 quintile: P.7
- 18 year old applications by POLAR3 quintile: P.8
- 18 year old applicants by ethnic group: P.11
- 18 year old applications by ethnic group: P.12
- Applicants (all ages): P.15
- Applications (all ages): P.16
- Applicants (all ages) by sex: P.17
- Applications (all ages) by sex: P.18
- Applicants (all ages) by POLAR3 quintile: P.19
- Applications (all ages) by POLAR3 quintile: P.20
- Applicants (all ages) by ethnic group: P.21
- Applications (all ages) by ethnic group: P.22

P.1 18 year old applicants

Statistic	2012	2013	2014	2015	2016	2017
June deadline applicants	12,930	12,095	11,895	12,120	12,665	11,815
Placed June deadline applicants	1,245	1,495	1,235	1,605	1,640	1,700
All placed applicants	1,410	1,765	1,395	1,890	1,925	2,045
June deadline applicants per 10,000 population	167.1	159.0	158.0	158.2	169.0	159.5
Placed June deadline applicants per 10,000	16.1	19.6	16.4	20.9	21.9	23.0
All placed applicants per 10,000 population	18.2	23.2	18.5	24.7	25.7	27.6

P.2 18 year old applications

Statistic	2012	2013	2014	2015	2016	2017
June deadline applications	13,330	12,450	12,260	12,435	13,040	12,200
Offers	8,895	9,350	8,980	10,150	10,500	10,055
Offer rate	66.7%	75.1%	73.3%	81.6%	80.5%	82.4%

P.3 18 year old applicants by sex

Statistic	Sex	2012	2013	2014	2015	2016	2017
June deadline applicants	Men	5,440	5,130	5,170	4,920	5,235	4,845
	Women	7,490	6,965	6,730	7,200	7,430	6,975
Placed June deadline applicants	Men	545	615	560	735	725	695
	Women	700	880	680	870	915	1,010
All placed applicants	Men	620	755	630	855	855	835
	Women	790	1,010	765	1,035	1,065	1,210
June deadline applicants per 10,000 population	Men	137.1	131.4	133.5	125.3	136.3	127.5
	Women	198.7	188.0	183.8	192.7	203.3	193.1
Placed June deadline applicants per 10,000 population	Men	13.8	15.8	14.4	18.7	18.8	18.3
	Women	18.6	23.7	18.5	23.3	25.1	27.9
All placed applicants per 10,000 population	Men	15.7	19.4	16.3	21.8	22.3	22.0
	Women	21.0	27.3	20.9	27.7	29.2	33.5

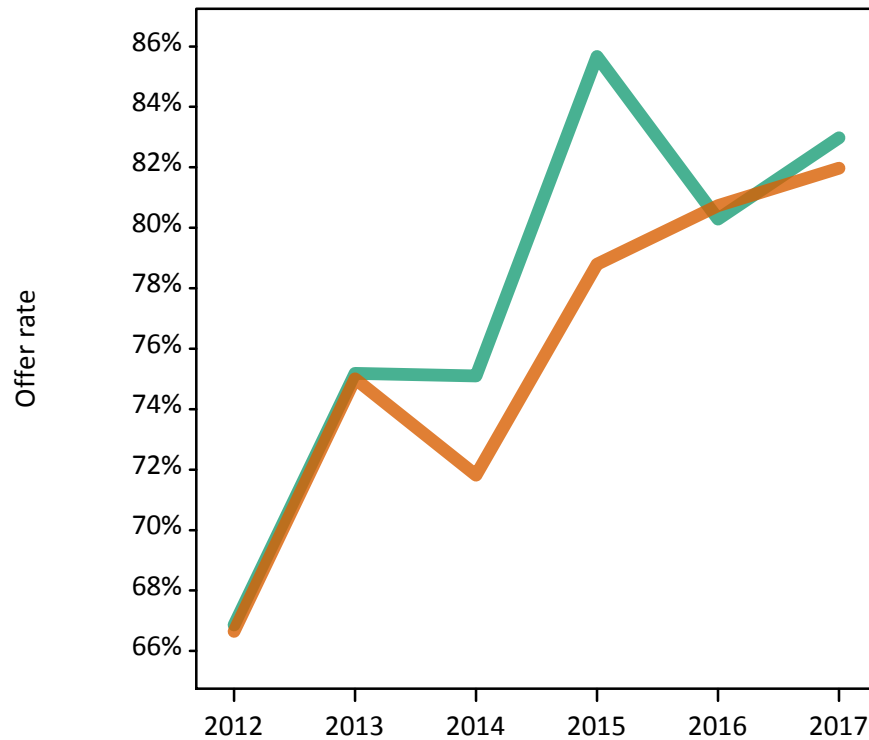
P.4 18 year old applications by sex

Statistic	Sex	2012	2013	2014	2015	2016	2017
June deadline applications	Men	5,670	5,340	5,395	5,095	5,455	5,065
	Women	7,665	7,110	6,860	7,340	7,585	7,135
Offers	Men	3,790	4,015	4,055	4,365	4,380	4,205
	Women	5,105	5,335	4,925	5,785	6,120	5,850
Offer rate	Men	66.9%	75.2%	75.1%	85.7%	80.3%	83.0%
	Women	66.6%	75.0%	71.8%	78.8%	80.7%	82.0%
Average offer rate	Men	67.2%	75.8%	76.1%	86.3%	81.6%	83.8%
	Women	66.4%	74.5%	71.0%	78.4%	79.8%	81.4%
Percentage point difference between offer rate and average offer rate	Men	-0.3	-0.6	-1.0	-0.6	-1.3	-0.8
	Women	0.2	0.5	0.8	0.4	1.0	0.6
Contribution of group to the average offer rate	Men	0.597	0.612	0.612	0.580	0.594	0.597
	Women	0.702	0.709	0.695	0.709	0.708	0.714

P.5 18 year old offer rate by sex

Note: The line for a group is not plotted when that group made fewer than 10 applications in any of the years from 2012-2017.

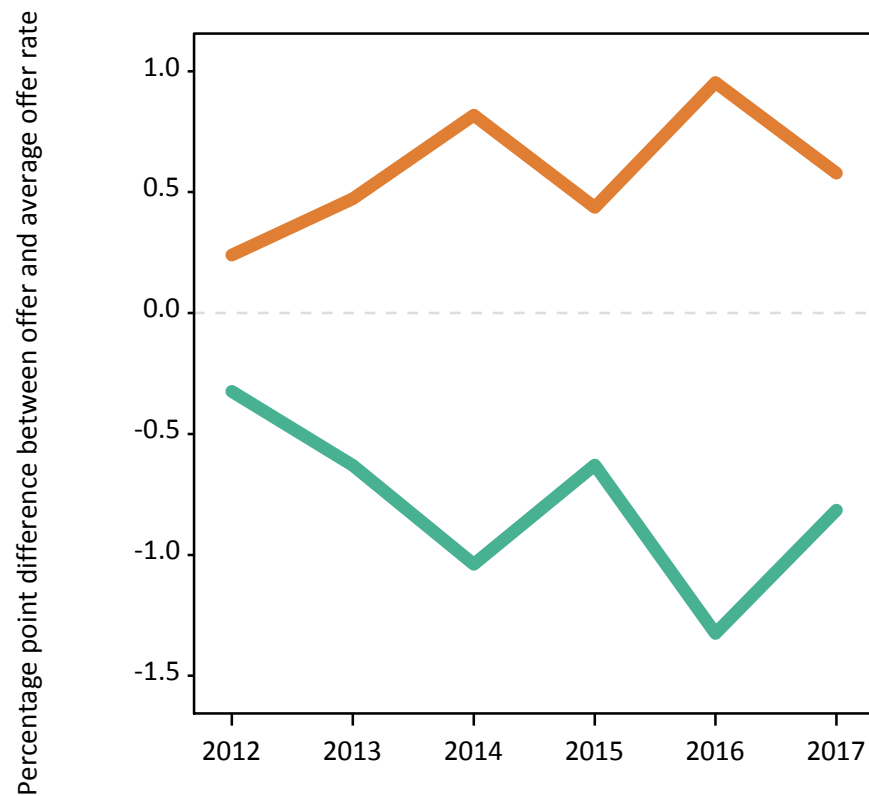
Men
Women



P.6 Percentage point difference between 18 year old offer rate and average offer rate by sex

Note: The line for a group is not plotted when that group made fewer than 50 applications in any of the years from 2012-2017.

Men
Women



P.7 18 year old applicants by POLAR3 quintile

Statistic	POLAR3 quintile	2012	2013	2014	2015	2016	2017
June deadline applicants	Quintile 1	820	795	850	835	855	800
	Quintile 2	1,415	1,445	1,405	1,405	1,430	1,325
	Quintile 3	2,320	2,180	2,090	2,170	2,185	1,970
	Quintile 4	3,325	3,095	3,095	3,075	3,150	2,950
	Quintile 5	5,005	4,560	4,425	4,600	5,010	4,725
Placed June deadline applicants	Quintile 1	65	85	90	95	100	105
	Quintile 2	130	155	140	165	150	165
	Quintile 3	200	245	200	270	280	240
	Quintile 4	330	375	320	400	380	435
	Quintile 5	515	635	480	665	725	745
All placed applicants	Quintile 1	75	100	105	115	115	115
	Quintile 2	155	180	160	190	180	195
	Quintile 3	230	290	225	320	320	285
	Quintile 4	365	440	360	470	455	520
	Quintile 5	585	750	540	790	840	920
June deadline applicants per 10,000 population	Quintile 1	57.6	57.0	61.0	59.7	63.2	60.3
	Quintile 2	94.4	97.9	95.9	94.6	98.8	93.2
	Quintile 3	150.2	142.9	139.0	141.4	145.3	132.3
	Quintile 4	209.7	197.9	200.8	196.4	204.0	193.2
	Quintile 5	298.0	275.7	271.4	274.7	303.3	287.8
Placed June deadline applicants per 10,000 population	Quintile 1	4.5	6.0	6.6	6.9	7.4	7.8
	Quintile 2	8.8	10.7	9.5	11.2	10.5	11.7
	Quintile 3	13.1	15.9	13.3	17.6	18.6	16.1
	Quintile 4	20.8	24.0	20.8	25.6	24.7	28.5
	Quintile 5	30.7	38.3	29.3	39.7	43.8	45.5
All placed applicants per 10,000 population	Quintile 1	5.3	7.1	7.4	8.2	8.7	8.7
	Quintile 2	10.2	12.4	10.9	12.9	12.6	13.7
	Quintile 3	15.0	19.1	15.1	20.8	21.2	19.1
	Quintile 4	22.9	28.0	23.4	30.0	29.5	34.1
	Quintile 5	34.8	45.4	33.0	47.2	51.0	55.9

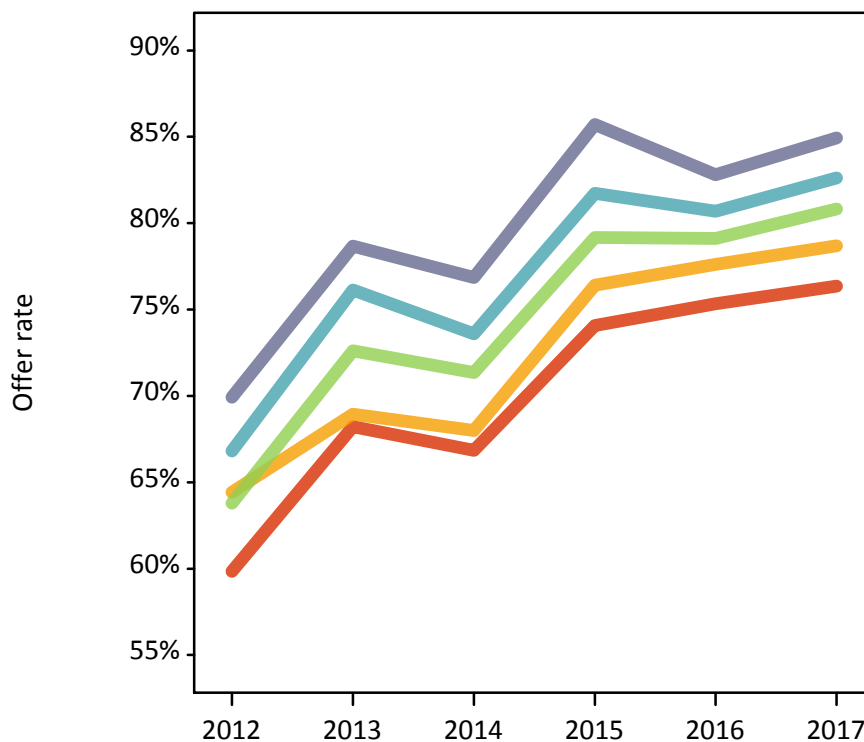
P.8 18 year old applications by POLAR3 quintile

Statistic	POLAR3 quintile	2012	2013	2014	2015	2016	2017
June deadline applications	Quintile 1	845	820	880	865	885	830
	Quintile 2	1,455	1,480	1,435	1,445	1,485	1,365
	Quintile 3	2,380	2,245	2,140	2,225	2,250	2,030
	Quintile 4	3,445	3,190	3,190	3,150	3,220	3,030
	Quintile 5	5,165	4,695	4,575	4,720	5,160	4,900
Offers	Quintile 1	505	560	590	640	665	635
	Quintile 2	940	1,020	975	1,105	1,150	1,075
	Quintile 3	1,520	1,630	1,525	1,765	1,780	1,640
	Quintile 4	2,300	2,430	2,350	2,575	2,600	2,505
	Quintile 5	3,615	3,695	3,515	4,045	4,275	4,165
Offer rate	Quintile 1	59.8%	68.2%	66.9%	74.1%	75.3%	76.4%
	Quintile 2	64.4%	68.9%	68.0%	76.4%	77.6%	78.7%
	Quintile 3	63.8%	72.6%	71.4%	79.2%	79.1%	80.8%
	Quintile 4	66.8%	76.1%	73.6%	81.7%	80.7%	82.6%
	Quintile 5	69.9%	78.7%	76.9%	85.7%	82.8%	84.9%
Average offer rate	Quintile 1	62.7%	69.9%	68.9%	76.8%	76.4%	77.5%
	Quintile 2	62.9%	70.8%	69.0%	77.8%	78.0%	79.2%
	Quintile 3	64.4%	73.2%	71.2%	80.2%	79.9%	81.0%
	Quintile 4	66.8%	75.2%	73.5%	81.3%	80.7%	82.7%
	Quintile 5	69.6%	78.2%	76.3%	84.6%	82.2%	84.5%
Percentage point difference between offer rate and average offer rate	Quintile 1	-2.9	-1.6	-2.1	-2.7	-1.1	-1.1
	Quintile 2	1.5	-1.8	-1.0	-1.4	-0.4	-0.5
	Quintile 3	-0.6	-0.6	0.2	-1.0	-0.8	-0.2
	Quintile 4	-0.0	1.0	0.1	0.4	0.0	-0.1
	Quintile 5	0.3	0.5	0.6	1.1	0.6	0.5
Contribution of group to the average offer rate	Quintile 1	0.146	0.150	0.151	0.150	0.163	0.158
	Quintile 2	0.184	0.195	0.191	0.193	0.178	0.199
	Quintile 3	0.239	0.243	0.241	0.239	0.232	0.235
	Quintile 4	0.314	0.309	0.314	0.308	0.296	0.306
	Quintile 5	0.449	0.438	0.437	0.440	0.452	0.467

P.9 18 year old offer rate by POLAR3 quintile

Note: The line for a group is not plotted when that group made fewer than 10 applications in any of the years from 2012-2017.

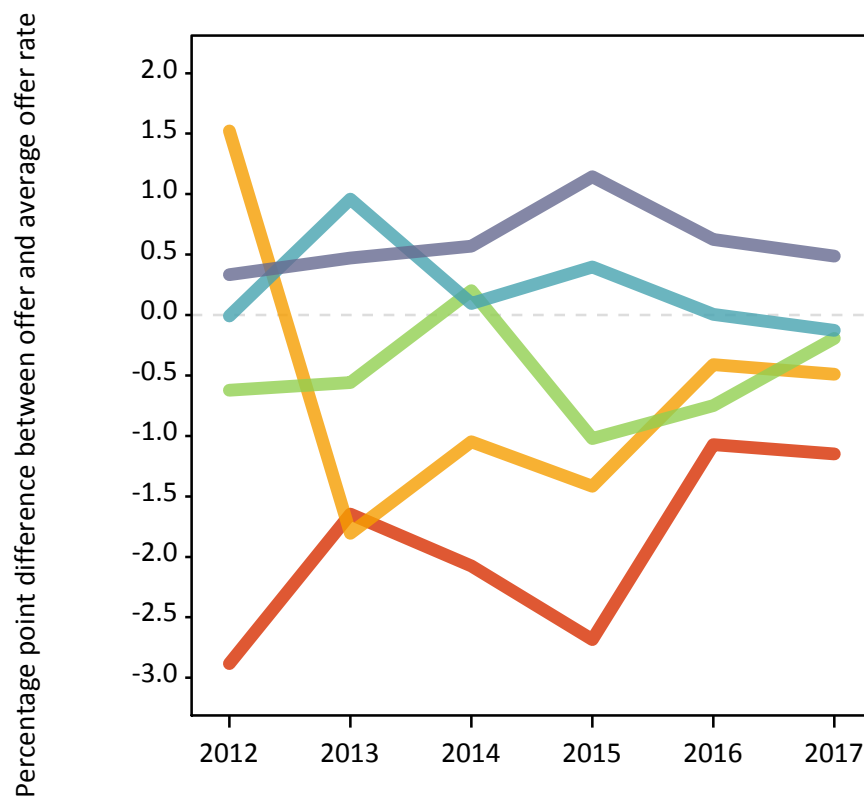
- Quintile 1
- Quintile 2
- Quintile 3
- Quintile 4
- Quintile 5



P.10 Percentage point difference between 18 year old offer rate and average offer rate by POLAR3 quintile

Note: The line for a group is not plotted when that group made fewer than 50 applications in any of the years from 2012-2017.

- Quintile 1
- Quintile 2
- Quintile 3
- Quintile 4
- Quintile 5



P.11 18 year old applicants by ethnic group

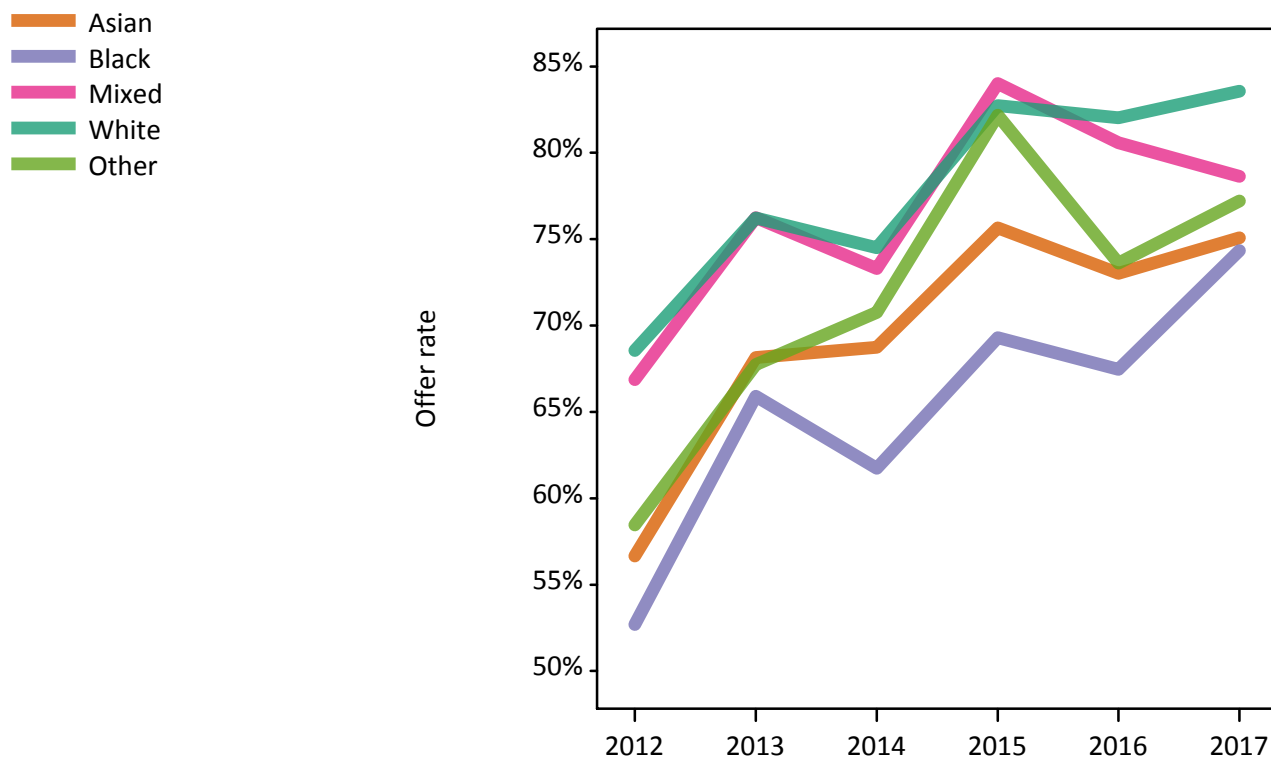
Statistic	Ethnic group	2012	2013	2014	2015	2016	2017
June deadline applicants	Asian	1,020	955	1,095	990	995	875
	Black	610	570	595	565	495	375
	Mixed	480	430	445	500	530	490
	White	10,635	9,965	9,590	9,880	10,420	9,885
	Other	125	120	130	130	140	130
Placed June deadline applicants	Asian	55	85	90	100	90	85
	Black	30	45	40	45	40	20
	Mixed	40	45	30	55	60	50
	White	1,105	1,305	1,055	1,385	1,430	1,525
	Other	5	10	15	10	15	10
All placed applicants	Asian	80	115	110	125	120	115
	Black	35	60	45	55	55	30
	Mixed	50	65	40	65	65	70
	White	1,220	1,495	1,170	1,620	1,655	1,800
	Other	10	15	20	15	20	15
June deadline applicants per 10,000 population	Asian	157.5	144.5	161.5	139.7	138.5	119.1
	Black	216.3	192.7	195.6	177.2	158.4	119.5
	Mixed	183.5	159.0	154.7	162.8	169.1	153.0
	White	164.7	158.3	155.4	158.6	172.3	166.6
	Other	142.4	134.5	138.6	132.8	140.7	127.2
Placed June deadline applicants per 10,000 population	Asian	8.8	12.6	13.1	14.4	12.6	11.8
	Black	11.4	14.8	13.5	14.1	13.1	6.4
	Mixed	16.1	17.0	10.8	17.5	18.7	16.2
	White	17.1	20.7	17.1	22.2	23.6	25.7
	Other	5.7	12.1	18.3	11.4	16.1	9.7
All placed applicants per 10,000 population	Asian	12.2	17.6	16.5	17.7	16.7	15.6
	Black	13.1	20.2	14.5	17.3	17.2	9.2
	Mixed	20.0	24.8	13.9	20.8	21.0	21.2
	White	18.9	23.7	19.0	26.0	27.3	30.4
	Other	9.0	15.4	20.4	15.6	18.1	15.5

P.12 18 year old applications by ethnic group

Statistic	Ethnic group	2012	2013	2014	2015	2016	2017
June deadline applications	Asian	1,045	975	1,115	1,005	1,020	900
	Black	615	575	595	570	500	380
	Mixed	490	440	455	515	545	500
	White	10,995	10,280	9,915	10,165	10,745	10,230
	Other	130	125	130	130	145	135
Offers	Asian	590	665	765	760	745	675
	Black	325	380	370	395	335	280
	Mixed	325	335	335	430	440	395
	White	7,535	7,835	7,385	8,410	8,815	8,550
	Other	75	85	90	105	105	105
Offer rate	Asian	56.7%	68.1%	68.7%	75.6%	73.0%	75.1%
	Black	52.7%	65.9%	61.7%	69.3%	67.5%	74.3%
	Mixed	66.9%	76.2%	73.3%	84.0%	80.6%	78.6%
	White	68.5%	76.2%	74.5%	82.7%	82.0%	83.6%
	Other	58.5%	67.7%	70.8%	82.2%	73.6%	77.2%
Average offer rate	Asian	58.1%	69.5%	68.9%	77.7%	75.4%	77.4%
	Black	55.5%	68.9%	65.9%	73.5%	72.9%	78.0%
	Mixed	67.2%	76.5%	74.9%	84.9%	81.2%	80.3%
	White	68.2%	76.0%	74.1%	82.3%	81.4%	83.1%
	Other	61.9%	67.6%	73.9%	79.6%	76.6%	80.9%
Percentage point difference between offer rate and average offer rate	Asian	-1.4	-1.3	-0.1	-2.0	-2.4	-2.3
	Black	-2.8	-2.9	-4.2	-4.2	-5.4	-3.7
	Mixed	-0.4	-0.2	-1.6	-0.9	-0.7	-1.7
	White	0.4	0.2	0.4	0.4	0.6	0.5
	Other	-3.5	0.1	-3.1	2.6	-3.0	-3.7
Contribution of group to the average offer rate	Asian	0.190	0.196	0.198	0.180	0.179	0.185
	Black	0.149	0.164	0.154	0.151	0.120	0.119
	Mixed	0.107	0.101	0.112	0.121	0.123	0.147
	White	0.851	0.853	0.837	0.842	0.848	0.862
	Other	0.099	0.111	0.112	0.090	0.082	0.096

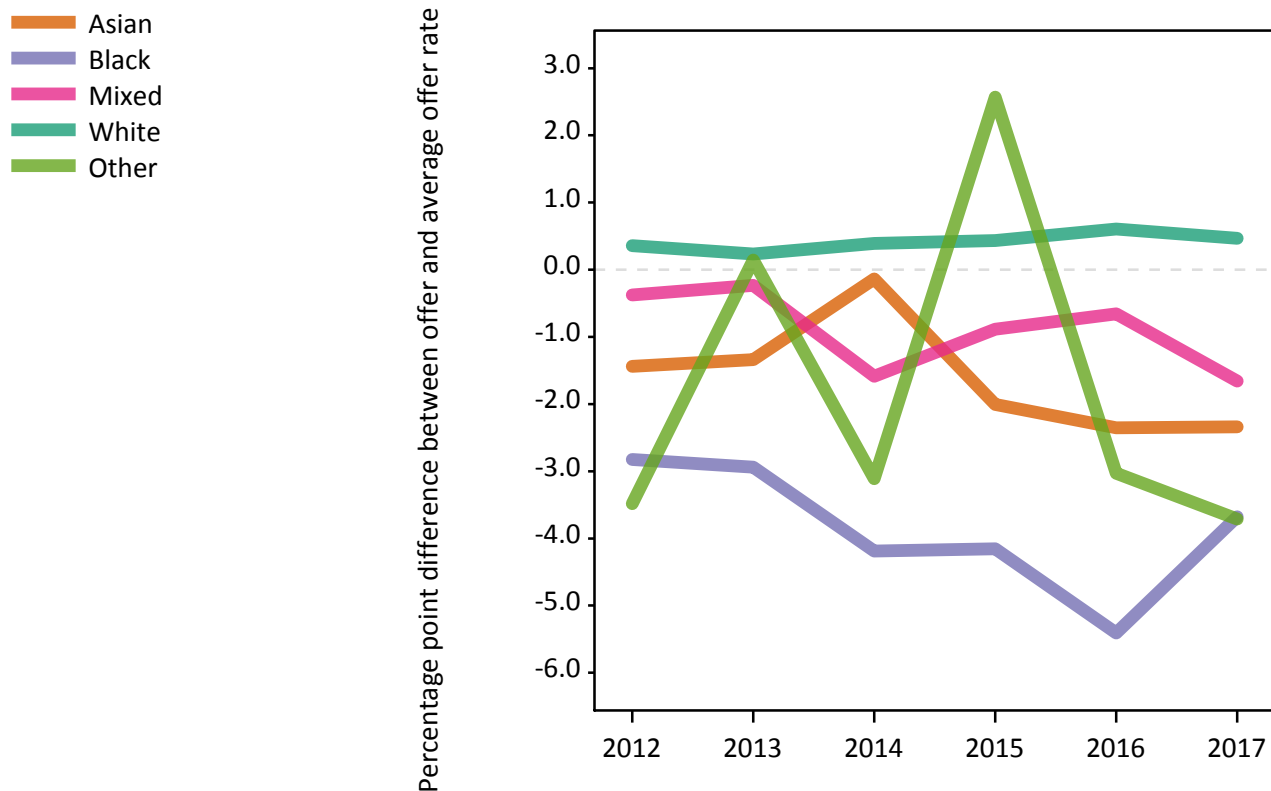
P.13 18 year old offer rate by ethnic group

Note: The line for a group is not plotted when that group made fewer than 10 applications in any of the years from 2012-2017.



P.14 Percentage point difference between 18 year old offer rate and average offer rate by ethnic group

Note: The line for a group is not plotted when that group made fewer than 50 applications in any of the years from 2012-2017.



P.15 Applicants (all ages)

Statistic	2012	2013	2014	2015	2016	2017
June deadline applicants	22,020	21,560	21,930	21,785	21,970	19,625
Placed June deadline applicants	2,660	3,310	3,025	3,520	3,475	3,355
All placed applicants	3,190	4,005	3,570	4,255	4,110	4,135

P.16 Applications (all ages)

Statistic	2012	2013	2014	2015	2016	2017
June deadline applications	23,225	22,710	23,100	22,800	23,040	20,620
Offers	13,085	14,700	14,470	16,180	16,175	15,205
Offer rate	56.3%	64.7%	62.7%	71.0%	70.2%	73.7%

P.17 Applicants (all ages) by sex

Statistic	Sex	2012	2013	2014	2015	2016	2017
June deadline applicants	Men	9,210	9,165	9,255	8,875	8,980	7,955
	Women	12,810	12,395	12,675	12,910	12,990	11,670
Placed June deadline applicants	Men	1,145	1,310	1,235	1,535	1,430	1,315
	Women	1,515	2,000	1,790	1,985	2,040	2,040
All placed applicants	Men	1,355	1,625	1,465	1,825	1,680	1,650
	Women	1,835	2,380	2,100	2,430	2,430	2,485

P.18 Applications (all ages) by sex

Statistic	Sex	2012	2013	2014	2015	2016	2017
June deadline applications	Men	9,815	9,720	9,850	9,365	9,465	8,450
	Women	13,410	12,995	13,250	13,435	13,575	12,170
Offers	Men	5,785	6,460	6,520	7,165	6,805	6,360
	Women	7,300	8,240	7,955	9,015	9,370	8,845
Offer rate	Men	59.0%	66.5%	66.2%	76.5%	71.9%	75.2%
	Women	54.4%	63.4%	60.0%	67.1%	69.0%	72.7%

P.19 Applicants (all ages) by POLAR3 quintile

Statistic	POLAR3 quintile	2012	2013	2014	2015	2016	2017
June deadline applicants	Quintile 1	1,800	1,820	1,980	1,950	1,920	1,700
	Quintile 2	2,815	2,880	2,975	2,940	2,830	2,480
	Quintile 3	3,895	3,935	3,870	3,925	3,940	3,290
	Quintile 4	5,500	5,460	5,590	5,380	5,375	4,800
	Quintile 5	7,930	7,400	7,455	7,530	7,825	7,275
Placed June deadline applicants	Quintile 1	205	260	310	310	310	295
	Quintile 2	330	430	415	450	425	430
	Quintile 3	420	570	500	595	605	515
	Quintile 4	680	845	760	890	840	815
	Quintile 5	1,015	1,195	1,035	1,265	1,275	1,280
All placed applicants	Quintile 1	275	325	380	405	385	360
	Quintile 2	430	525	500	540	510	530
	Quintile 3	510	700	595	720	710	625
	Quintile 4	800	1,000	885	1,070	995	1,020
	Quintile 5	1,165	1,450	1,190	1,500	1,490	1,575

P.20 Applications (all ages) by POLAR3 quintile

Statistic	POLAR3 quintile	2012	2013	2014	2015	2016	2017
June deadline applications	Quintile 1	1,920	1,955	2,120	2,070	2,030	1,785
	Quintile 2	2,985	3,030	3,135	3,090	3,005	2,620
	Quintile 3	4,090	4,135	4,020	4,070	4,130	3,455
	Quintile 4	5,825	5,770	5,935	5,630	5,585	5,010
	Quintile 5	8,325	7,765	7,820	7,875	8,200	7,655
Offers	Quintile 1	850	1,045	1,110	1,230	1,215	1,170
	Quintile 2	1,500	1,705	1,760	1,955	1,945	1,800
	Quintile 3	2,185	2,550	2,450	2,795	2,800	2,455
	Quintile 4	3,325	3,805	3,745	4,045	3,965	3,725
	Quintile 5	5,190	5,555	5,365	6,105	6,195	5,990
Offer rate	Quintile 1	44.4%	53.6%	52.5%	59.4%	59.8%	65.4%
	Quintile 2	50.3%	56.2%	56.2%	63.2%	64.7%	68.7%
	Quintile 3	53.4%	61.7%	60.9%	68.7%	67.8%	71.1%
	Quintile 4	57.1%	66.0%	63.1%	71.9%	71.0%	74.4%
	Quintile 5	62.4%	71.6%	68.6%	77.5%	75.6%	78.3%

P.21 Applicants (all ages) by ethnic group

Statistic	Ethnic group	2012	2013	2014	2015	2016	2017
June deadline applicants	Asian	1,940	1,875	2,165	2,005	1,925	1,660
	Black	1,630	1,510	1,590	1,540	1,410	1,105
	Mixed	845	840	895	930	960	840
	White	17,205	16,950	16,865	16,915	17,215	15,635
	Other	270	255	285	255	295	255
Placed June deadline applicants	Asian	155	205	220	260	245	210
	Black	110	150	125	135	120	135
	Mixed	105	110	90	135	135	125
	White	2,255	2,795	2,535	2,930	2,915	2,840
	Other	20	30	40	30	45	25
All placed applicants	Asian	215	295	285	335	310	285
	Black	150	190	165	195	160	185
	Mixed	130	150	110	160	155	165
	White	2,600	3,270	2,905	3,465	3,370	3,420
	Other	25	40	50	40	50	45

P.22 Applications (all ages) by ethnic group

Statistic	Ethnic group	2012	2013	2014	2015	2016	2017
June deadline applications	Asian	2,035	1,970	2,245	2,090	2,005	1,730
	Black	1,735	1,585	1,660	1,590	1,475	1,150
	Mixed	890	885	945	970	1,005	875
	White	18,145	17,855	17,810	17,740	18,070	16,455
	Other	285	280	305	265	310	275
Offers	Asian	990	1,125	1,355	1,375	1,305	1,140
	Black	580	685	675	775	665	605
	Mixed	515	560	565	705	700	640
	White	10,805	12,075	11,625	13,045	13,200	12,540
	Other	130	160	170	180	190	180
Offer rate	Asian	48.6%	57.2%	60.4%	65.7%	65.1%	66.0%
	Black	33.5%	43.3%	40.7%	48.7%	45.2%	52.6%
	Mixed	57.7%	63.4%	60.0%	72.9%	69.6%	73.1%
	White	59.5%	67.6%	65.3%	73.5%	73.1%	76.2%
	Other	46.0%	57.4%	55.4%	67.9%	61.8%	65.9%

Technical Notes and Definitions

UCAS undergraduate scheme

Adjustment

Adjustment allows applicants who have met and exceeded the terms of their conditional firm offer to seek and find a place at another provider whilst keeping their place at their original firm choice provider.

Clearing

Clearing is a route for applicants that are not placed and holding no offers to find a place on courses with vacancies.

Cycle year

The UCAS application cycle which runs from September to October the following year. For example the 2017 cycle runs from September 2016 through to October 2017.

End of cycle

The point in the cycle to which the numbers in this report refer, and the point at which the cycle is closed such that no more applications or offers can be made, and no more applicants can be placed. Numbers reported at the end of cycle exclude information on a small number of applicants who cancelled during the cycle.

Extra

Applicants who are unsuccessful in obtaining an offer or decline all offers may be eligible to apply through Extra, where they can apply to one further course at a time. Extra operates from 25 February until early July. It provides applicants who are eligible the possibility of obtaining an offer before exam results are published and Clearing starts.

June 30 deadline

The deadline for main scheme applications. Applicants who apply after this date will go directly into Clearing.

Record of Prior Acceptance (RPA)

RPA is an acceptance route used when a provider informs UCAS of applicants it has accepted outside of the normal application process (e.g. individuals who have applied directly to the provider).

Reporting groups

Ethnic group

High level grouping of ethnic origin as declared by the applicant: 'White', 'Black', 'Asian', 'Mixed', 'Other', 'Unknown'. Applicants who declare themselves as 'Unknown' ethnic origin are not reported in these tables, but are included in the associated csv data file.

POLAR3 quintile

Developed by HEFCE, POLAR3 classifies small areas across the UK into five groups according to their level of young participation in Higher Education. Each of these groups represents around 20 per cent of young people and is ranked from Quintile 1 (areas with the lowest young participation rates, considered as the most disadvantaged) to Quintile 5 (highest young participation rates, considered most advantaged). POLAR3 is based on the participation rates of young people between 2005 and 2009 who entered Higher Education between 2005-06 and 2010-11, therefore is most suitable for applicants aged 19 and under. These groups are assigned using the postcode declared by the applicant at the time of their application. If a UK postcode is invalid, considered unsafe for measurement or there is no link to Census geography possible then the applicant is not assigned to a quintile. Applicants with no POLAR3 quintile are not reported.

Sex

Sex as declared by the applicant.

SIMD 2016 quintile

Scottish index of multiple deprivation (SIMD) identifies small area concentrations of multiple deprivation across all of Scotland, providing a relative measure of deprivation amongst 6505 small areas (data zones) based on 7 socio-economic domains. These small areas are classified into five groups ranked from Quintile 1 (considered the most deprived) to Quintile 5 (considered least deprived), with equal populations in each quintile. Quintiles are assigned using the postcode declared by the applicant, applicants declaring invalid postcodes are classified as 'Not assigned' and are not reported.

SIMD is only defined for applicants domiciled in Scotland, therefore any applicants domiciled outside of Scotland cannot be assigned to an SIMD quintile and so are not reported for this measure.

SIMD is only reported for providers in Scotland. Application and entry rates by SIMD are reported in the 2017 End of Cycle Report and the 2017 cycle January deadline application rate report.

Statistics reported in the tables

All placed applicants

The number of applicants placed for entry into higher education at the provider through one of their choices, including any choices made through Extra, or via Adjustment, Clearing or RPA.

All placed applicants per 10,000 population

The number of total UK domiciled 18 year old placed applicants for entry into higher education at the provider divided by the number of UK 18 year olds in the population, multiplied by 10,000. This gives the number of 18 year olds, for every 10,000 in the population, that were placed at the provider through one of their choices, including any choices made through Extra, or via Adjustment, Clearing or RPA. It is an alternative way of expressing the entry rate to a provider. By referencing the underlying population this statistic shows how the number of placed applicants is changing in relation to the available pool of potential applicants and so gives the chance that somebody from the group will be placed at a provider.

This statistic is only reported for 18 year olds.

Average offer rate

The offer rate that you might expect if the predicted grades and subject choice of applicants were the only factors that influenced whether an applicant was made an offer by the provider. The average offer rate is calculated by dividing applicants according to their specific combination of grades (for A levels the best three predicted grades are used, for BTECs, International Baccalaureate and Scottish Highers and Advanced Highers, predicted grades along with any grades already achieved upon applying are used) and subject choice. For each combination the number of main scheme offers is divided by the number of main scheme applications, to give an overall offer rate. This is then multiplied by the number of applications made by the group for which the average offer rate is being calculated (for example POLAR3 quintile 1), to give an average number of offers for that group. These average number of offers are then added together across all combinations of predicted grade and subject and divided by the number of main scheme applications from the group to give the average offer rate.

The average offer rate does not attempt to control for any other factors that may play a part in the decision to make an offer, such as the subject of the qualifications studied, their relevance to a course, or the grade in each subject; higher numbers of A levels being studied; the exact profile of grades predicted; personal statements; teacher references; interviews; or any other criteria (such as work experience or portfolios) that may be part of the admissions decision.

This statistic is only reported for 18 year olds.

Contribution of group to the average offer rate

The way in which the average offer rate is defined means that the pattern of application and offers of a group (for example POLAR3 quintile 1) will always contribute, in part, to the average offer rate for that group. When this contribution is large, the average offer rate will mainly reflect the patterns for the group, meaning that the value of the average offer rate will be similar to the offer rate, the percentage point difference statistic will be small, and any real difference between the offer rate and what might be expected given the predicted grades and subject choices of the applicants will be difficult to detect.

Values of the contribution of group to the average offer rate range between 0 and 1. The closer the value is to 1 the greater the contribution a group makes to its own average offer rate.

This statistic is only reported for 18 year olds.

Placed June deadline applicants

An applicant who has been placed for entry into higher education at the provider through a June deadline application.

Placed June deadline applicants per 10,000 population

The number of UK domiciled 18 year old placed June deadline applicants at the provider divided by the number of UK 18 year olds in the population, multiplied by 10,000. This gives the number of 18 year olds, for every 10,000 in the population, that were placed at the provider through one of their June deadline applications. It is an alternative way of expressing the entry rate to a provider, but for placed June deadline applicants only. By referencing the underlying population this statistic shows how the number of placed June deadline applicants is changing in relation to the available pool of potential 18 year old applicants and so gives the chance that somebody from the group will be placed at a provider through a June deadline application.

This statistic is only reported for 18 year olds.

June deadline applications

An application (or choice) to a course in higher education to the provider that is made by the June 30 deadline. Each applicant can make up to five choices this way. The number of June deadline applications does not include choices made through the following routes: Clearing, Extra, Adjustment and RPAs. Applications made to October deadline courses received after the October deadline are not included in these statistics.

June deadline applicants

The number of applicants that made at least one application to the provider by the June 30 deadline.

June deadline applicants per 10,000 population

The number of UK domiciled 18 year old June deadline applicants to the provider divided by the number of UK 18 year olds in the population, multiplied by 10,000. This gives the number of 18 year olds, for every 10,000 in the population, who applied by the June 30 deadline. It is equivalent to the application rate. By referencing the underlying population this statistic shows how the number of June deadline applicants is changing in relation to the available pool of potential 18 year old applicants and so gives the chance that somebody from the group will apply to a provider by the June 30 deadline.

This statistic is only reported for 18 year olds.

Offers

An offer is defined as a provider's decision in response to an application to offer a place to an applicant, often subject to the applicant satisfying academic and/or other criteria, via a June deadline application (i.e. does not cover choices made through the following routes: Clearing, Extra, Adjustment and RPAs).

Offer rate

The number of offers made divided by the number of June deadline applications. This gives the proportion of all June deadline applications to the provider that received an offer.

Percentage point difference between offer rate and average offer rate

The offer rate minus the average offer rate.

The percentage point difference can be compared to the expected range of statistical variation resulting from the calculation of the average offer rate using the Average Offer Rate Lookup Table. Where the value of the percentage point difference lies outside of this range, the percentage point difference may be considered to represent a real difference between the offer rate and the average offer rate.

Other definitions

Age

This analysis uses country-specific age definitions that align with the cut off points for school and college cohorts within the different administrations of the UK. For England and Wales, ages are defined on the 31 August, for Northern Ireland on the 1 July and for Scotland on the 28 February the following year. Defining ages in this way matches the assignment of children to school cohorts. For applicants outside of the UK a cohort cut off of 31 August has been used. Numbers for applicants aged 17 and under are included in the tables that report numbers for all age groups. Providers in Scotland typically receive a higher proportion of applicants aged 17 and under compared to providers elsewhere in the UK.

Provider

A higher education provider - a university or college.

UK domiciled

Declared area of permanent residence within England, Northern Ireland, Scotland and Wales. Applicants from the Channel Islands and Isle of Man are not included.