

Q50 Queen Mary University of London

Cycle years: 2012 - 2017

Cycle Reference Point: End of Cycle

Applicant coverage: UK domiciled

Reporting groups: Sex, POLAR3, ethnic group

Applicant statistics: June deadline applicants, placed June deadline applicants, all placed applicants, June deadline applicants per 10,000 population, placed June deadline applicants per 10,000 population, all placed applicants per 10,000 population

Application statistics: June deadline applications, offers, offer rate, average offer rate, percentage point difference between offer rate and average offer rate, contribution of group to the average offer rate

Non-disclosure controls: To avoid the disclosure of information about any individual the following measures are taken

- Applicants, placed applicants, applications and offers are rounded to the nearest 5.
- Applicants/placed applicants per 10,000 population figures are reported as 0 if the applicant/placed applicant figures are rounded to 0.
- All statistics related to the offer rate are not reported when the number of applications for a group is less than 10. The percentage point difference between the offer rate and the average offer rate is not reported when the number of applications for a group is less than 50.
- Offer rates are reported as 0% if there are fewer than 5 offers, and 100% if the number of offers is within 5 of the number of applications. When the offer rate is reported as 0% or 100%, it is reported in italics.

Contents:

18 year old applicants:	P.1
18 year old applications:	P.2
18 year old applicants by sex:	P.3
18 year old applications by sex:	P.4
18 year old applicants by POLAR3 quintile:	P.7
18 year old applications by POLAR3 quintile:	P.8
18 year old applicants by ethnic group:	P.11
18 year old applications by ethnic group:	P.12
Applicants (all ages):	P.15
Applications (all ages):	P.16
Applicants (all ages) by sex:	P.17
Applications (all ages) by sex:	P.18
Applicants (all ages) by POLAR3 quintile:	P.19
Applications (all ages) by POLAR3 quintile:	P.20
Applicants (all ages) by ethnic group:	P.21
Applications (all ages) by ethnic group:	P.22

P.1 18 year old applicants

Statistic	2012	2013	2014	2015	2016	2017
June deadline applicants	7,550	9,820	11,085	12,170	11,295	11,030
Placed June deadline applicants	1,105	1,365	1,350	1,730	1,740	1,705
All placed applicants	1,615	1,720	1,760	2,150	2,275	2,285
June deadline applicants per 10,000 population	97.6	129.0	147.2	158.8	150.7	148.9
Placed June deadline applicants per 10,000	14.3	17.9	17.9	22.6	23.2	23.0
All placed applicants per 10,000 population	20.9	22.6	23.4	28.0	30.3	30.8

P.2 18 year old applications

Statistic	2012	2013	2014	2015	2016	2017
June deadline applications	7,835	10,180	11,445	12,580	11,665	11,420
Offers	5,405	7,570	8,515	9,435	8,965	9,315
Offer rate	69.0%	74.3%	74.4%	75.0%	76.9%	81.6%

P.3 18 year old applicants by sex

Statistic	Sex	2012	2013	2014	2015	2016	2017
June deadline applicants	Men	3,695	4,580	5,090	5,580	5,100	5,150
	Women	3,855	5,240	5,995	6,590	6,195	5,880
Placed June deadline applicants	Men	535	555	575	735	775	790
	Women	570	810	775	995	965	915
All placed applicants	Men	775	725	760	925	1,030	1,035
	Women	835	995	1,000	1,225	1,245	1,250
June deadline applicants per 10,000 population	Men	93.2	117.4	131.4	142.2	132.8	135.6
	Women	102.3	141.4	163.8	176.3	169.5	162.9
Placed June deadline applicants per 10,000 population	Men	13.5	14.3	14.9	18.8	20.2	20.8
	Women	15.1	21.8	21.1	26.6	26.4	25.4
All placed applicants per 10,000 population	Men	19.6	18.6	19.7	23.6	26.8	27.3
	Women	22.2	26.9	27.3	32.7	34.0	34.6

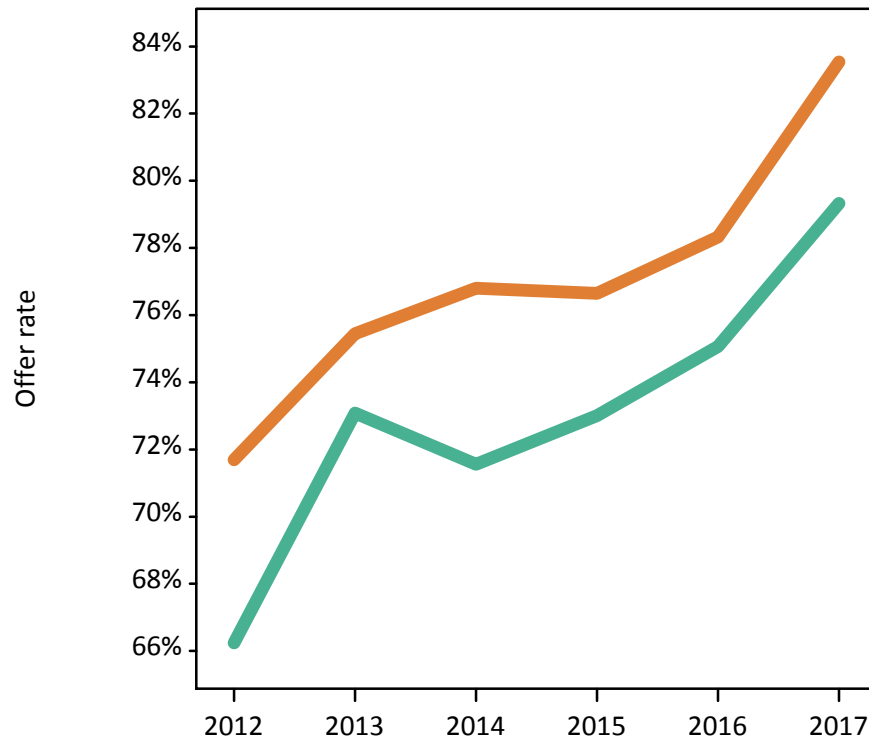
P.4 18 year old applications by sex

Statistic	Sex	2012	2013	2014	2015	2016	2017
June deadline applications	Men	3,845	4,765	5,255	5,785	5,265	5,325
	Women	3,990	5,415	6,195	6,795	6,400	6,095
Offers	Men	2,545	3,480	3,760	4,225	3,950	4,225
	Women	2,860	4,085	4,755	5,210	5,010	5,090
Offer rate	Men	66.2%	73.1%	71.6%	73.0%	75.1%	79.3%
	Women	71.7%	75.4%	76.8%	76.7%	78.3%	83.5%
Average offer rate	Men	67.2%	73.4%	72.4%	73.3%	75.6%	79.8%
	Women	70.8%	75.2%	76.1%	76.4%	77.9%	83.1%
Percentage point difference between offer rate and average offer rate	Men	-1.0	-0.3	-0.8	-0.3	-0.5	-0.5
	Women	0.9	0.3	0.7	0.3	0.4	0.5
Contribution of group to the average offer rate	Men	0.608	0.579	0.582	0.586	0.570	0.586
	Women	0.622	0.630	0.646	0.648	0.646	0.639

P.5 18 year old offer rate by sex

Note: The line for a group is not plotted when that group made fewer than 10 applications in any of the years from 2012-2017.

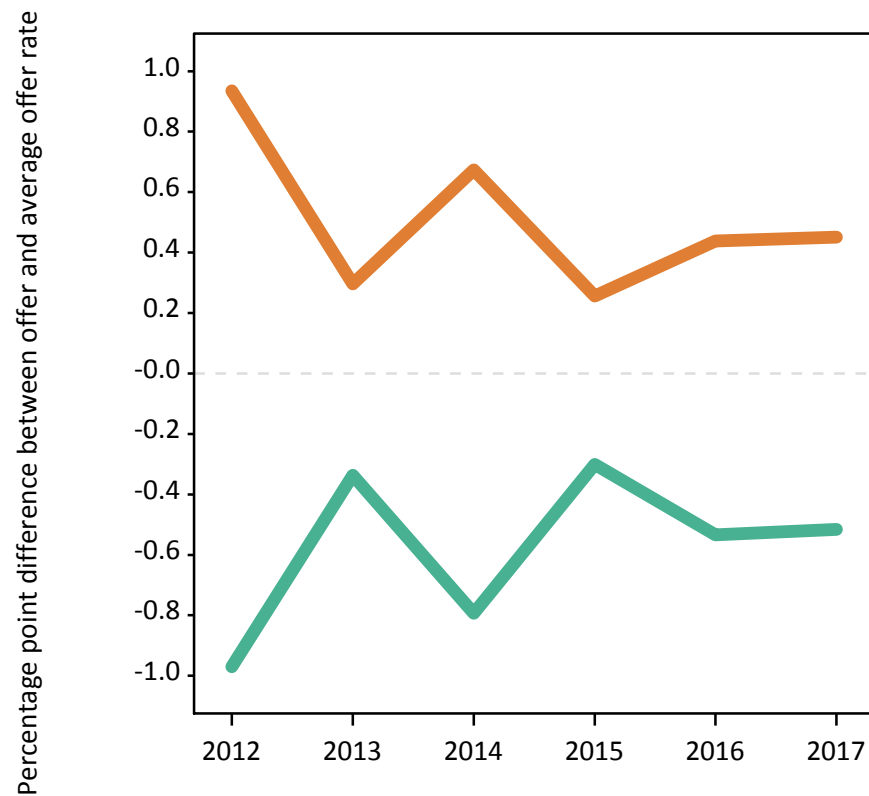
Men
Women



P.6 Percentage point difference between 18 year old offer rate and average offer rate by sex

Note: The line for a group is not plotted when that group made fewer than 50 applications in any of the years from 2012-2017.

Men
Women



P.7 18 year old applicants by POLAR3 quintile

Statistic	POLAR3 quintile	2012	2013	2014	2015	2016	2017
June deadline applicants	Quintile 1	345	455	550	590	555	565
	Quintile 2	705	990	1,140	1,265	1,260	1,100
	Quintile 3	1,575	2,075	2,405	2,555	2,535	2,555
	Quintile 4	1,935	2,530	2,840	3,245	2,930	2,905
	Quintile 5	2,970	3,740	4,120	4,490	3,985	3,870
Placed June deadline applicants	Quintile 1	55	65	50	75	70	75
	Quintile 2	105	150	155	170	200	155
	Quintile 3	225	280	310	390	430	460
	Quintile 4	295	370	350	460	460	465
	Quintile 5	415	500	480	625	580	540
All placed applicants	Quintile 1	70	75	65	90	95	105
	Quintile 2	160	185	190	205	240	195
	Quintile 3	325	340	400	490	545	590
	Quintile 4	430	480	450	570	610	625
	Quintile 5	625	635	650	790	780	760
June deadline applicants per 10,000 population	Quintile 1	24.1	32.8	39.4	42.0	41.2	42.6
	Quintile 2	46.9	67.3	77.8	85.1	87.1	77.3
	Quintile 3	101.9	136.1	159.9	166.5	168.8	171.4
	Quintile 4	121.9	161.6	184.2	207.4	189.7	190.1
	Quintile 5	176.8	226.2	252.6	268.1	241.3	235.8
Placed June deadline applicants per 10,000 population	Quintile 1	3.9	4.7	3.7	5.5	5.3	5.7
	Quintile 2	7.1	10.2	10.5	11.4	13.8	10.8
	Quintile 3	14.6	18.3	20.5	25.5	28.5	31.0
	Quintile 4	18.7	23.6	22.8	29.5	29.7	30.4
	Quintile 5	24.7	30.1	29.5	37.4	35.2	32.8
All placed applicants per 10,000 population	Quintile 1	4.8	5.5	4.6	6.5	6.9	7.7
	Quintile 2	10.6	12.6	13.0	13.8	16.7	13.6
	Quintile 3	21.2	22.4	26.5	31.8	36.2	39.8
	Quintile 4	27.0	30.8	29.3	36.3	39.5	40.9
	Quintile 5	37.1	38.3	40.0	47.1	47.1	46.3

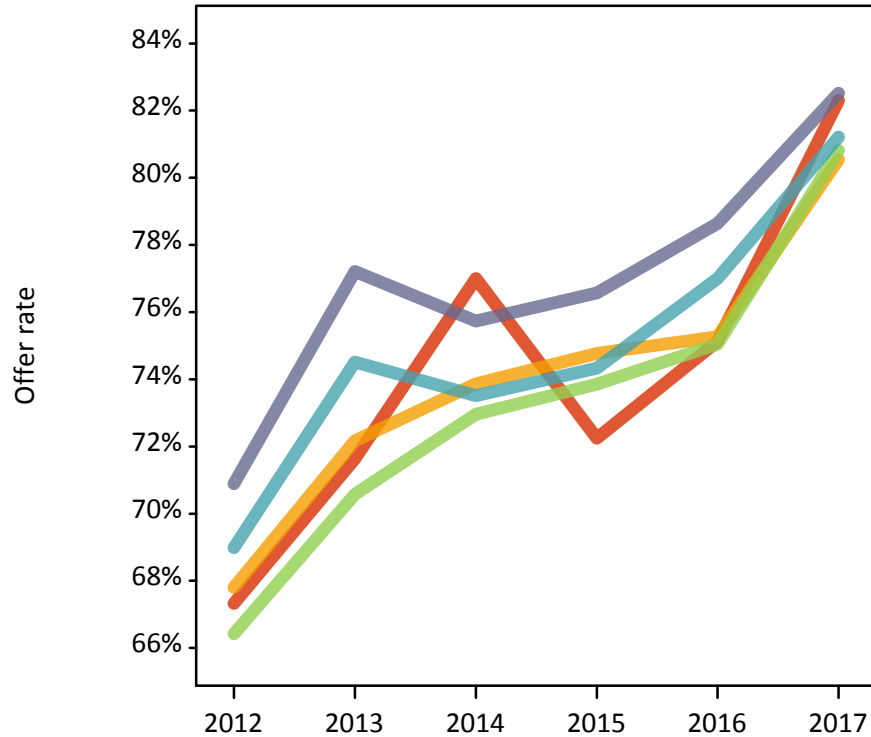
P.8 18 year old applications by POLAR3 quintile

Statistic	POLAR3 quintile	2012	2013	2014	2015	2016	2017
June deadline applications	Quintile 1	350	485	560	600	570	580
	Quintile 2	730	1,025	1,170	1,310	1,300	1,125
	Quintile 3	1,640	2,155	2,500	2,650	2,635	2,655
	Quintile 4	2,010	2,620	2,935	3,360	3,005	3,005
	Quintile 5	3,075	3,870	4,245	4,630	4,125	4,010
Offers	Quintile 1	235	345	430	430	430	480
	Quintile 2	495	740	865	980	975	905
	Quintile 3	1,090	1,520	1,825	1,960	1,980	2,145
	Quintile 4	1,385	1,955	2,155	2,500	2,315	2,440
	Quintile 5	2,180	2,990	3,215	3,545	3,245	3,310
Offer rate	Quintile 1	67.3%	71.6%	77.0%	72.2%	75.1%	82.3%
	Quintile 2	67.8%	72.2%	73.9%	74.8%	75.3%	80.6%
	Quintile 3	66.4%	70.6%	73.0%	73.9%	75.0%	80.8%
	Quintile 4	69.0%	74.5%	73.5%	74.3%	77.0%	81.2%
	Quintile 5	70.9%	77.2%	75.7%	76.6%	78.6%	82.5%
Average offer rate	Quintile 1	67.3%	75.0%	76.3%	75.8%	74.7%	83.7%
	Quintile 2	67.3%	72.4%	73.8%	75.6%	75.8%	81.1%
	Quintile 3	67.0%	71.7%	73.2%	74.2%	75.4%	81.6%
	Quintile 4	69.0%	74.8%	74.1%	74.4%	76.9%	81.1%
	Quintile 5	70.7%	75.9%	75.3%	75.7%	78.4%	81.7%
Percentage point difference between offer rate and average offer rate	Quintile 1	0.1	-3.4	0.7	-3.6	0.4	-1.4
	Quintile 2	0.6	-0.3	0.1	-0.8	-0.5	-0.6
	Quintile 3	-0.6	-1.1	-0.3	-0.3	-0.3	-0.8
	Quintile 4	-0.1	-0.3	-0.6	-0.0	0.1	0.1
	Quintile 5	0.2	1.3	0.5	0.9	0.3	0.9
Contribution of group to the average offer rate	Quintile 1	0.145	0.122	0.127	0.112	0.123	0.116
	Quintile 2	0.199	0.186	0.172	0.164	0.175	0.166
	Quintile 3	0.295	0.282	0.286	0.265	0.287	0.293
	Quintile 4	0.332	0.318	0.311	0.318	0.311	0.318
	Quintile 5	0.459	0.442	0.428	0.420	0.410	0.410

P.9 18 year old offer rate by POLAR3 quintile

Note: The line for a group is not plotted when that group made fewer than 10 applications in any of the years from 2012-2017.

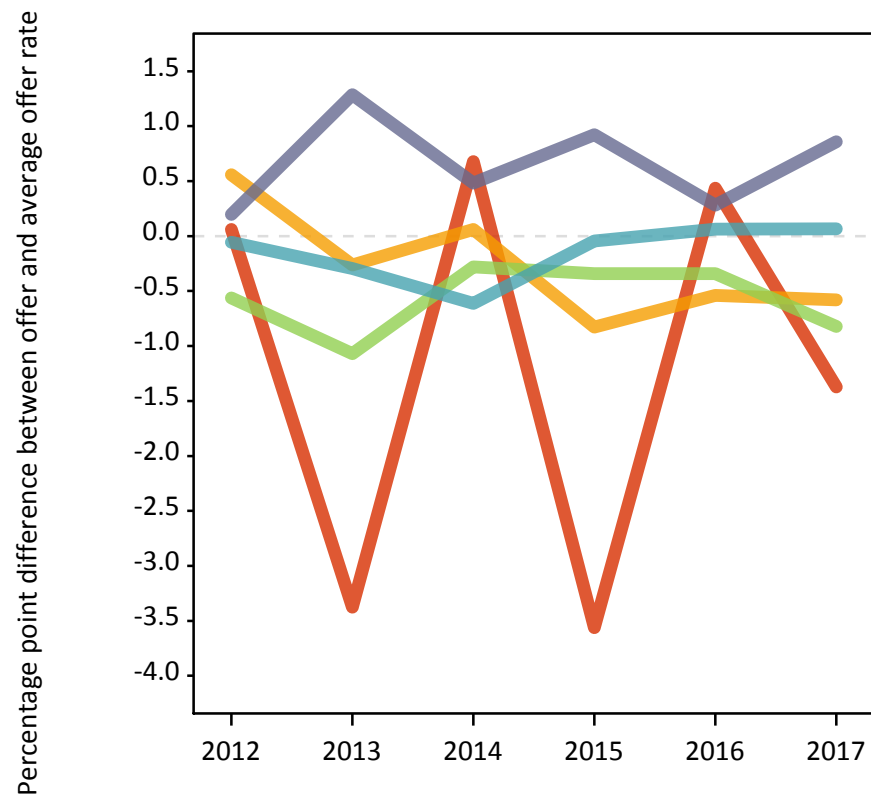
- Quintile 1
- Quintile 2
- Quintile 3
- Quintile 4
- Quintile 5



P.10 Percentage point difference between 18 year old offer rate and average offer rate by POLAR3 quintile

Note: The line for a group is not plotted when that group made fewer than 50 applications in any of the years from 2012-2017.

- Quintile 1
- Quintile 2
- Quintile 3
- Quintile 4
- Quintile 5



P.11 18 year old applicants by ethnic group

Statistic	Ethnic group	2012	2013	2014	2015	2016	2017
June deadline applicants	Asian	2,900	3,455	3,870	4,415	4,380	4,540
	Black	635	875	935	1,055	1,025	1,075
	Mixed	385	545	650	735	655	720
	White	3,175	4,395	4,945	5,250	4,505	3,875
	Other	375	435	565	585	605	670
Placed June deadline applicants	Asian	445	520	505	680	775	760
	Black	65	85	95	125	145	145
	Mixed	65	80	90	95	100	105
	White	460	610	565	730	610	560
	Other	50	60	85	85	95	105
All placed applicants	Asian	675	675	685	885	1,045	1,060
	Black	115	115	140	165	200	210
	Mixed	95	95	115	120	125	150
	White	625	735	685	845	745	680
	Other	80	85	110	110	130	145
June deadline applicants per 10,000 population	Asian	448.0	523.9	570.7	623.7	608.8	617.4
	Black	226.2	294.4	308.4	332.0	327.7	342.3
	Mixed	147.0	200.8	225.6	238.7	208.8	224.6
	White	49.2	69.9	80.1	84.3	74.4	65.3
	Other	421.5	477.5	608.1	604.9	605.9	650.5
Placed June deadline applicants per 10,000 population	Asian	68.4	78.5	74.5	95.8	107.8	103.0
	Black	23.4	29.3	31.7	39.9	45.7	46.1
	Mixed	25.3	28.8	30.9	30.2	31.1	33.3
	White	7.2	9.7	9.1	11.7	10.1	9.4
	Other	57.6	67.3	90.2	88.2	97.5	103.9
All placed applicants per 10,000 population	Asian	104.4	102.2	101.2	124.8	145.4	143.9
	Black	41.2	38.7	46.5	51.5	64.5	67.1
	Mixed	36.1	35.5	40.3	39.2	39.1	46.1
	White	9.7	11.7	11.1	13.6	12.3	11.5
	Other	90.4	91.5	120.3	114.1	131.6	142.7

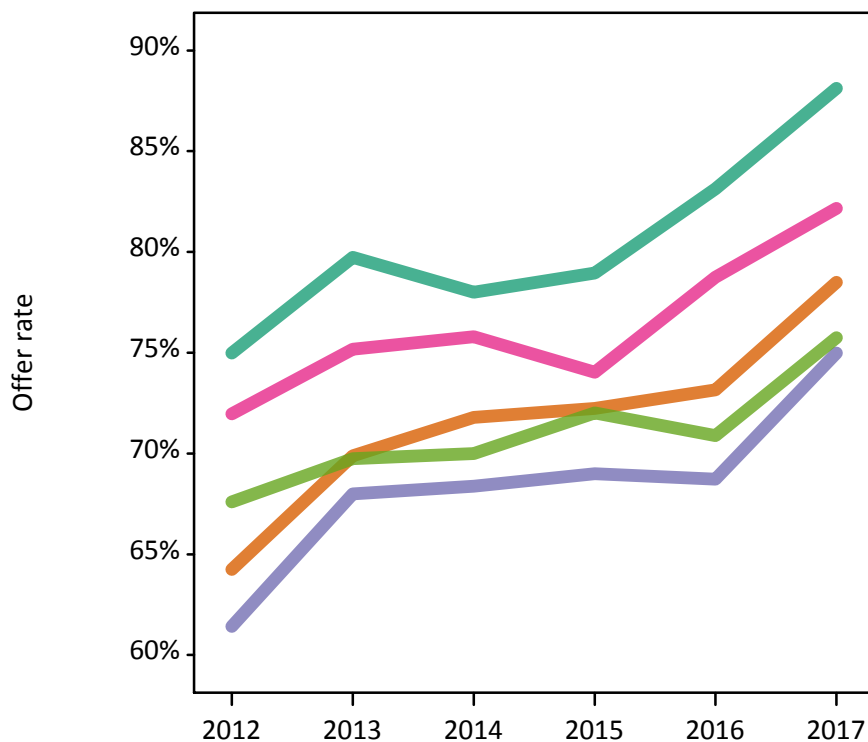
P.12 18 year old applications by ethnic group

Statistic	Ethnic group	2012	2013	2014	2015	2016	2017
June deadline applications	Asian	3,040	3,620	4,050	4,595	4,565	4,735
	Black	650	905	950	1,090	1,050	1,110
	Mixed	395	565	665	750	675	740
	White	3,270	4,510	5,065	5,405	4,610	3,985
	Other	395	455	590	610	625	695
Offers	Asian	1,955	2,530	2,905	3,320	3,340	3,715
	Black	400	615	650	750	725	835
	Mixed	285	425	505	555	530	610
	White	2,450	3,595	3,950	4,265	3,835	3,510
	Other	265	320	415	440	445	530
Offer rate	Asian	64.2%	69.9%	71.8%	72.2%	73.1%	78.5%
	Black	61.4%	68.0%	68.4%	69.0%	68.7%	75.0%
	Mixed	72.0%	75.2%	75.8%	74.0%	78.8%	82.2%
	White	75.0%	79.7%	78.0%	79.0%	83.1%	88.1%
	Other	67.6%	69.7%	70.0%	72.0%	70.9%	75.8%
Average offer rate	Asian	64.6%	69.9%	72.0%	72.8%	73.2%	78.6%
	Black	60.8%	67.9%	68.8%	69.7%	71.0%	77.9%
	Mixed	71.9%	75.3%	74.9%	73.5%	78.8%	82.9%
	White	74.5%	79.6%	77.8%	78.2%	82.2%	86.8%
	Other	69.4%	70.4%	70.1%	73.0%	73.1%	77.0%
Percentage point difference between offer rate and average offer rate	Asian	-0.3	0.0	-0.2	-0.6	-0.1	-0.1
	Black	0.6	0.1	-0.5	-0.7	-2.3	-2.9
	Mixed	0.1	-0.1	0.8	0.5	-0.0	-0.7
	White	0.4	0.1	0.2	0.7	0.9	1.3
	Other	-1.8	-0.7	-0.1	-1.0	-2.3	-1.2
Contribution of group to the average offer rate	Asian	0.527	0.478	0.473	0.468	0.498	0.506
	Black	0.192	0.190	0.177	0.168	0.168	0.187
	Mixed	0.146	0.122	0.127	0.126	0.134	0.139
	White	0.572	0.570	0.571	0.544	0.527	0.481
	Other	0.158	0.137	0.125	0.125	0.121	0.136

P.13 18 year old offer rate by ethnic group

Note: The line for a group is not plotted when that group made fewer than 10 applications in any of the years from 2012-2017.

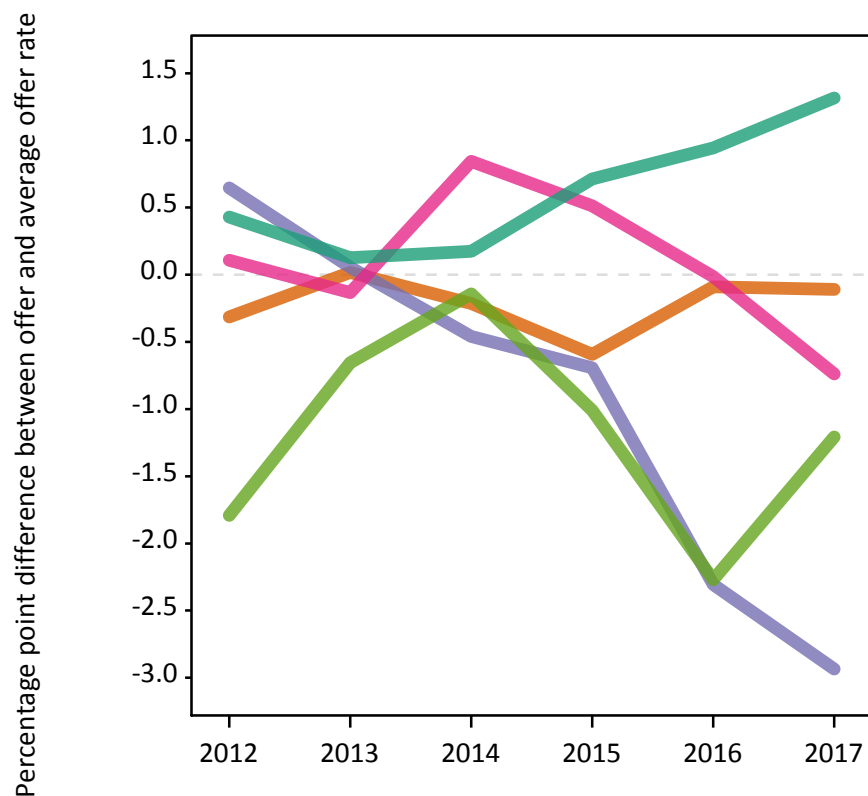
- Asian
- Black
- Mixed
- White
- Other



P.14 Percentage point difference between 18 year old offer rate and average offer rate by ethnic group

Note: The line for a group is not plotted when that group made fewer than 50 applications in any of the years from 2012-2017.

- Asian
- Black
- Mixed
- White
- Other



P.15 Applicants (all ages)

Statistic	2012	2013	2014	2015	2016	2017
June deadline applicants	14,115	17,610	20,585	21,300	19,940	18,910
Placed June deadline applicants	1,780	2,290	2,275	2,715	2,870	2,670
All placed applicants	2,585	2,845	2,975	3,440	3,745	3,550

P.16 Applications (all ages)

Statistic	2012	2013	2014	2015	2016	2017
June deadline applications	14,835	18,430	21,510	22,210	20,790	19,800
Offers	8,105	11,195	12,760	13,885	13,200	13,235
Offer rate	54.6%	60.7%	59.3%	62.5%	63.5%	66.9%

P.17 Applicants (all ages) by sex

Statistic	Sex	2012	2013	2014	2015	2016	2017
June deadline applicants	Men	7,075	8,720	10,070	10,400	9,495	9,175
	Women	7,040	8,890	10,515	10,895	10,445	9,735
Placed June deadline applicants	Men	910	1,035	1,055	1,265	1,375	1,315
	Women	870	1,255	1,220	1,450	1,495	1,355
All placed applicants	Men	1,330	1,320	1,390	1,600	1,810	1,715
	Women	1,255	1,525	1,585	1,845	1,935	1,835

P.18 Applications (all ages) by sex

Statistic	Sex	2012	2013	2014	2015	2016	2017
June deadline applications	Men	7,440	9,150	10,530	10,870	9,905	9,595
	Women	7,390	9,285	10,980	11,340	10,890	10,200
Offers	Men	4,015	5,520	6,070	6,705	6,165	6,310
	Women	4,090	5,675	6,690	7,180	7,035	6,925
Offer rate	Men	53.9%	60.3%	57.6%	61.7%	62.2%	65.8%
	Women	55.3%	61.1%	61.0%	63.3%	64.6%	67.9%

P.19 Applicants (all ages) by POLAR3 quintile

Statistic	POLAR3 quintile	2012	2013	2014	2015	2016	2017
June deadline applicants	Quintile 1	650	875	1,060	1,085	1,020	1,000
	Quintile 2	1,330	1,760	2,125	2,175	2,120	1,935
	Quintile 3	3,155	3,885	4,645	4,715	4,540	4,435
	Quintile 4	3,625	4,530	5,270	5,655	5,180	4,930
	Quintile 5	5,265	6,480	7,410	7,610	7,010	6,510
Placed June deadline applicants	Quintile 1	85	105	100	120	120	120
	Quintile 2	160	250	260	255	310	245
	Quintile 3	385	500	535	630	695	720
	Quintile 4	475	600	600	715	750	705
	Quintile 5	660	820	775	985	990	865
All placed applicants	Quintile 1	110	125	120	145	155	160
	Quintile 2	240	300	320	310	385	310
	Quintile 3	570	620	685	800	890	920
	Quintile 4	675	750	780	895	995	945
	Quintile 5	975	1,035	1,055	1,275	1,305	1,195

P.20 Applications (all ages) by POLAR3 quintile

Statistic	POLAR3 quintile	2012	2013	2014	2015	2016	2017
June deadline applications	Quintile 1	675	925	1,095	1,115	1,055	1,035
	Quintile 2	1,390	1,850	2,230	2,270	2,205	2,025
	Quintile 3	3,340	4,095	4,900	4,935	4,770	4,665
	Quintile 4	3,800	4,730	5,500	5,880	5,390	5,160
	Quintile 5	5,545	6,745	7,710	7,945	7,305	6,810
Offers	Quintile 1	345	525	635	660	635	680
	Quintile 2	725	1,080	1,320	1,395	1,360	1,285
	Quintile 3	1,705	2,350	2,805	2,970	2,915	3,105
	Quintile 4	2,065	2,860	3,220	3,645	3,465	3,445
	Quintile 5	3,215	4,340	4,740	5,175	4,780	4,660
Offer rate	Quintile 1	51.0%	56.8%	58.1%	59.1%	60.3%	65.7%
	Quintile 2	52.4%	58.3%	59.2%	61.5%	61.8%	63.6%
	Quintile 3	51.1%	57.3%	57.3%	60.2%	61.0%	66.6%
	Quintile 4	54.4%	60.5%	58.5%	62.0%	64.3%	66.8%
	Quintile 5	58.0%	64.4%	61.5%	65.2%	65.5%	68.4%

P.21 Applicants (all ages) by ethnic group

Statistic	Ethnic group	2012	2013	2014	2015	2016	2017
June deadline applicants	Asian	4,980	5,800	6,865	7,395	7,305	7,300
	Black	1,585	1,840	2,205	2,250	2,150	2,145
	Mixed	760	1,020	1,230	1,335	1,205	1,215
	White	5,800	7,800	8,915	8,935	7,825	6,760
	Other	730	870	1,055	1,055	1,140	1,150
Placed June deadline applicants	Asian	640	795	800	1,000	1,205	1,120
	Black	135	160	175	225	245	240
	Mixed	110	135	145	145	160	165
	White	770	1,070	990	1,155	1,040	935
	Other	85	100	125	150	180	165
All placed applicants	Asian	1,005	1,035	1,105	1,355	1,615	1,545
	Black	215	210	255	295	350	355
	Mixed	160	170	200	185	215	220
	White	1,020	1,260	1,190	1,355	1,265	1,135
	Other	125	130	170	200	245	220

P.22 Applications (all ages) by ethnic group

Statistic	Ethnic group	2012	2013	2014	2015	2016	2017
June deadline applications	Asian	5,280	6,135	7,255	7,760	7,660	7,680
	Black	1,635	1,910	2,285	2,330	2,230	2,215
	Mixed	795	1,070	1,275	1,390	1,250	1,255
	White	6,085	8,115	9,250	9,270	8,120	7,090
	Other	770	915	1,110	1,105	1,190	1,205
Offers	Asian	2,860	3,665	4,355	4,890	4,865	5,140
	Black	650	935	1,105	1,195	1,165	1,260
	Mixed	465	650	770	870	790	850
	White	3,610	5,260	5,735	6,055	5,475	5,005
	Other	405	530	625	685	720	780
Offer rate	Asian	54.2%	59.7%	60.0%	63.0%	63.5%	67.0%
	Black	39.7%	48.8%	48.4%	51.3%	52.2%	56.9%
	Mixed	58.4%	60.8%	60.5%	62.5%	63.4%	67.6%
	White	59.4%	64.8%	62.0%	65.3%	67.4%	70.6%
	Other	52.3%	57.9%	56.2%	62.0%	60.4%	64.8%

Technical Notes and Definitions

UCAS undergraduate scheme

Adjustment

Adjustment allows applicants who have met and exceeded the terms of their conditional firm offer to seek and find a place at another provider whilst keeping their place at their original firm choice provider.

Clearing

Clearing is a route for applicants that are not placed and holding no offers to find a place on courses with vacancies.

Cycle year

The UCAS application cycle which runs from September to October the following year. For example the 2017 cycle runs from September 2016 through to October 2017.

End of cycle

The point in the cycle to which the numbers in this report refer, and the point at which the cycle is closed such that no more applications or offers can be made, and no more applicants can be placed. Numbers reported at the end of cycle exclude information on a small number of applicants who cancelled during the cycle.

Extra

Applicants who are unsuccessful in obtaining an offer or decline all offers may be eligible to apply through Extra, where they can apply to one further course at a time. Extra operates from 25 February until early July. It provides applicants who are eligible the possibility of obtaining an offer before exam results are published and Clearing starts.

June 30 deadline

The deadline for main scheme applications. Applicants who apply after this date will go directly into Clearing.

Record of Prior Acceptance (RPA)

RPA is an acceptance route used when a provider informs UCAS of applicants it has accepted outside of the normal application process (e.g. individuals who have applied directly to the provider).

Reporting groups

Ethnic group

High level grouping of ethnic origin as declared by the applicant: 'White', 'Black', 'Asian', 'Mixed', 'Other', 'Unknown'. Applicants who declare themselves as 'Unknown' ethnic origin are not reported in these tables, but are included in the associated csv data file.

POLAR3 quintile

Developed by HEFCE, POLAR3 classifies small areas across the UK into five groups according to their level of young participation in Higher Education. Each of these groups represents around 20 per cent of young people and is ranked from Quintile 1 (areas with the lowest young participation rates, considered as the most disadvantaged) to Quintile 5 (highest young participation rates, considered most advantaged). POLAR3 is based on the participation rates of young people between 2005 and 2009 who entered Higher Education between 2005-06 and 2010-11, therefore is most suitable for applicants aged 19 and under. These groups are assigned using the postcode declared by the applicant at the time of their application. If a UK postcode is invalid, considered unsafe for measurement or there is no link to Census geography possible then the applicant is not assigned to a quintile. Applicants with no POLAR3 quintile are not reported.

Sex

Sex as declared by the applicant.

SIMD 2016 quintile

Scottish index of multiple deprivation (SIMD) identifies small area concentrations of multiple deprivation across all of Scotland, providing a relative measure of deprivation amongst 6505 small areas (data zones) based on 7 socio-economic domains. These small areas are classified into five groups ranked from Quintile 1 (considered the most deprived) to Quintile 5 (considered least deprived), with equal populations in each quintile. Quintiles are assigned using the postcode declared by the applicant, applicants declaring invalid postcodes are classified as 'Not assigned' and are not reported.

SIMD is only defined for applicants domiciled in Scotland, therefore any applicants domiciled outside of Scotland cannot be assigned to an SIMD quintile and so are not reported for this measure.

SIMD is only reported for providers in Scotland. Application and entry rates by SIMD are reported in the 2017 End of Cycle Report and the 2017 cycle January deadline application rate report.

Statistics reported in the tables

All placed applicants

The number of applicants placed for entry into higher education at the provider through one of their choices, including any choices made through Extra, or via Adjustment, Clearing or RPA.

All placed applicants per 10,000 population

The number of total UK domiciled 18 year old placed applicants for entry into higher education at the provider divided by the number of UK 18 year olds in the population, multiplied by 10,000. This gives the number of 18 year olds, for every 10,000 in the population, that were placed at the provider through one of their choices, including any choices made through Extra, or via Adjustment, Clearing or RPA. It is an alternative way of expressing the entry rate to a provider. By referencing the underlying population this statistic shows how the number of placed applicants is changing in relation to the available pool of potential applicants and so gives the chance that somebody from the group will be placed at a provider.

This statistic is only reported for 18 year olds.

Average offer rate

The offer rate that you might expect if the predicted grades and subject choice of applicants were the only factors that influenced whether an applicant was made an offer by the provider. The average offer rate is calculated by dividing applicants according to their specific combination of grades (for A levels the best three predicted grades are used, for BTECs, International Baccalaureate and Scottish Highers and Advanced Highers, predicted grades along with any grades already achieved upon applying are used) and subject choice. For each combination the number of main scheme offers is divided by the number of main scheme applications, to give an overall offer rate. This is then multiplied by the number of applications made by the group for which the average offer rate is being calculated (for example POLAR3 quintile 1), to give an average number of offers for that group. These average number of offers are then added together across all combinations of predicted grade and subject and divided by the number of main scheme applications from the group to give the average offer rate.

The average offer rate does not attempt to control for any other factors that may play a part in the decision to make an offer, such as the subject of the qualifications studied, their relevance to a course, or the grade in each subject; higher numbers of A levels being studied; the exact profile of grades predicted; personal statements; teacher references; interviews; or any other criteria (such as work experience or portfolios) that may be part of the admissions decision.

This statistic is only reported for 18 year olds.

Contribution of group to the average offer rate

The way in which the average offer rate is defined means that the pattern of application and offers of a group (for example POLAR3 quintile 1) will always contribute, in part, to the average offer rate for that group. When this contribution is large, the average offer rate will mainly reflect the patterns for the group, meaning that the value of the average offer rate will be similar to the offer rate, the percentage point difference statistic will be small, and any real difference between the offer rate and what might be expected given the predicted grades and subject choices of the applicants will be difficult to detect.

Values of the contribution of group to the average offer rate range between 0 and 1. The closer the value is to 1 the greater the contribution a group makes to its own average offer rate.

This statistic is only reported for 18 year olds.

Placed June deadline applicants

An applicant who has been placed for entry into higher education at the provider through a June deadline application.

Placed June deadline applicants per 10,000 population

The number of UK domiciled 18 year old placed June deadline applicants at the provider divided by the number of UK 18 year olds in the population, multiplied by 10,000. This gives the number of 18 year olds, for every 10,000 in the population, that were placed at the provider through one of their June deadline applications. It is an alternative way of expressing the entry rate to a provider, but for placed June deadline applicants only. By referencing the underlying population this statistic shows how the number of placed June deadline applicants is changing in relation to the available pool of potential 18 year old applicants and so gives the chance that somebody from the group will be placed at a provider through a June deadline application.

This statistic is only reported for 18 year olds.

June deadline applications

An application (or choice) to a course in higher education to the provider that is made by the June 30 deadline. Each applicant can make up to five choices this way. The number of June deadline applications does not include choices made through the following routes: Clearing, Extra, Adjustment and RPAs. Applications made to October deadline courses received after the October deadline are not included in these statistics.

June deadline applicants

The number of applicants that made at least one application to the provider by the June 30 deadline.

June deadline applicants per 10,000 population

The number of UK domiciled 18 year old June deadline applicants to the provider divided by the number of UK 18 year olds in the population, multiplied by 10,000. This gives the number of 18 year olds, for every 10,000 in the population, who applied by the June 30 deadline. It is equivalent to the application rate. By referencing the underlying population this statistic shows how the number of June deadline applicants is changing in relation to the available pool of potential 18 year old applicants and so gives the chance that somebody from the group will apply to a provider by the June 30 deadline.

This statistic is only reported for 18 year olds.

Offers

An offer is defined as a provider's decision in response to an application to offer a place to an applicant, often subject to the applicant satisfying academic and/or other criteria, via a June deadline application (i.e. does not cover choices made through the following routes: Clearing, Extra, Adjustment and RPAs).

Offer rate

The number of offers made divided by the number of June deadline applications. This gives the proportion of all June deadline applications to the provider that received an offer.

Percentage point difference between offer rate and average offer rate

The offer rate minus the average offer rate.

The percentage point difference can be compared to the expected range of statistical variation resulting from the calculation of the average offer rate using the Average Offer Rate Lookup Table. Where the value of the percentage point difference lies outside of this range, the percentage point difference may be considered to represent a real difference between the offer rate and the average offer rate.

Other definitions

Age

This analysis uses country-specific age definitions that align with the cut off points for school and college cohorts within the different administrations of the UK. For England and Wales, ages are defined on the 31 August, for Northern Ireland on the 1 July and for Scotland on the 28 February the following year. Defining ages in this way matches the assignment of children to school cohorts. For applicants outside of the UK a cohort cut off of 31 August has been used. Numbers for applicants aged 17 and under are included in the tables that report numbers for all age groups. Providers in Scotland typically receive a higher proportion of applicants aged 17 and under compared to providers elsewhere in the UK.

Provider

A higher education provider - a university or college.

UK domiciled

Declared area of permanent residence within England, Northern Ireland, Scotland and Wales. Applicants from the Channel Islands and Isle of Man are not included.