

S64 St Marys University Twickenham London

Cycle years: 2012 - 2017

Cycle Reference Point: End of Cycle

Applicant coverage: UK domiciled

Reporting groups: Sex, POLAR3, ethnic group

Applicant statistics: June deadline applicants, placed June deadline applicants, all placed applicants, June deadline applicants per 10,000 population, placed June deadline applicants per 10,000 population, all placed applicants per 10,000 population

Application statistics: June deadline applications, offers, offer rate, average offer rate, percentage point difference between offer rate and average offer rate, contribution of group to the average offer rate

Non-disclosure controls: To avoid the disclosure of information about any individual the following measures are taken

- Applicants, placed applicants, applications and offers are rounded to the nearest 5.
- Applicants/placed applicants per 10,000 population figures are reported as 0 if the applicant/placed applicant figures are rounded to 0.
- All statistics related to the offer rate are not reported when the number of applications for a group is less than 10. The percentage point difference between the offer rate and the average offer rate is not reported when the number of applications for a group is less than 50.
- Offer rates are reported as 0% if there are fewer than 5 offers, and 100% if the number of offers is within 5 of the number of applications. When the offer rate is reported as 0% or 100%, it is reported in italics.

Contents:

- 18 year old applicants: P.1
- 18 year old applications: P.2
- 18 year old applicants by sex: P.3
- 18 year old applications by sex: P.4
- 18 year old applicants by POLAR3 quintile: P.7
- 18 year old applications by POLAR3 quintile: P.8
- 18 year old applicants by ethnic group: P.11
- 18 year old applications by ethnic group: P.12
- Applicants (all ages): P.15
- Applications (all ages): P.16
- Applicants (all ages) by sex: P.17
- Applications (all ages) by sex: P.18
- Applicants (all ages) by POLAR3 quintile: P.19
- Applications (all ages) by POLAR3 quintile: P.20
- Applicants (all ages) by ethnic group: P.21
- Applications (all ages) by ethnic group: P.22

P.1 18 year old applicants

Statistic	2012	2013	2014	2015	2016	2017
June deadline applicants	3,180	2,645	2,870	3,300	3,155	2,735
Placed June deadline applicants	655	570	650	715	635	540
All placed applicants	680	640	705	785	730	605
June deadline applicants per 10,000 population	41.1	34.7	38.1	43.1	42.1	36.9
Placed June deadline applicants per 10,000	8.5	7.5	8.6	9.3	8.5	7.3
All placed applicants per 10,000 population	8.8	8.4	9.4	10.3	9.7	8.2

P.2 18 year old applications

Statistic	2012	2013	2014	2015	2016	2017
June deadline applications	3,315	2,750	3,010	3,420	3,300	2,840
Offers	2,820	2,475	2,730	3,080	3,025	2,575
Offer rate	85.0%	90.0%	90.7%	90.1%	91.7%	90.7%

P.3 18 year old applicants by sex

Statistic	Sex	2012	2013	2014	2015	2016	2017
June deadline applicants	Men	1,120	955	1,100	1,295	1,310	1,120
	Women	2,060	1,690	1,775	2,005	1,845	1,615
Placed June deadline applicants	Men	260	240	260	280	290	245
	Women	395	335	390	435	345	290
All placed applicants	Men	265	270	280	310	325	280
	Women	410	370	425	475	405	325
June deadline applicants per 10,000 population	Men	28.2	24.5	28.4	33.0	34.1	29.5
	Women	54.7	45.6	48.5	53.7	50.4	44.8
Placed June deadline applicants per 10,000 population	Men	6.5	6.1	6.7	7.1	7.6	6.5
	Women	10.5	9.0	10.7	11.6	9.4	8.1
All placed applicants per 10,000 population	Men	6.7	7.0	7.3	7.9	8.5	7.3
	Women	10.9	10.0	11.6	12.8	11.0	9.1

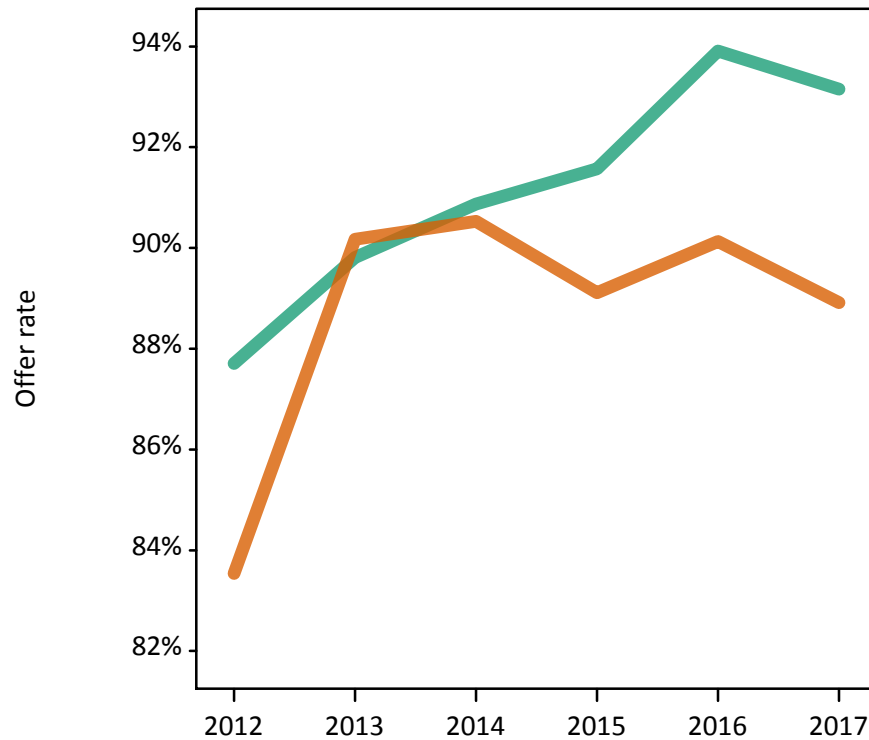
P.4 18 year old applications by sex

Statistic	Sex	2012	2013	2014	2015	2016	2017
June deadline applications	Men	1,195	1,010	1,185	1,365	1,395	1,195
	Women	2,120	1,740	1,825	2,055	1,905	1,640
Offers	Men	1,050	910	1,075	1,250	1,310	1,115
	Women	1,770	1,570	1,655	1,835	1,715	1,460
Offer rate	Men	87.7%	89.8%	90.9%	91.6%	93.9%	93.1%
	Women	83.5%	90.2%	90.5%	89.1%	90.1%	88.9%
Average offer rate	Men	88.0%	91.7%	91.6%	92.7%	94.2%	92.6%
	Women	83.3%	89.1%	90.1%	88.4%	89.9%	89.3%
Percentage point difference between offer rate and average offer rate	Men	-0.3	-1.9	-0.7	-1.1	-0.3	0.5
	Women	0.2	1.1	0.5	0.7	0.2	-0.4
Contribution of group to the average offer rate	Men	0.579	0.580	0.605	0.598	0.608	0.614
	Women	0.762	0.756	0.744	0.734	0.713	0.719

P.5 18 year old offer rate by sex

Note: The line for a group is not plotted when that group made fewer than 10 applications in any of the years from 2012-2017.

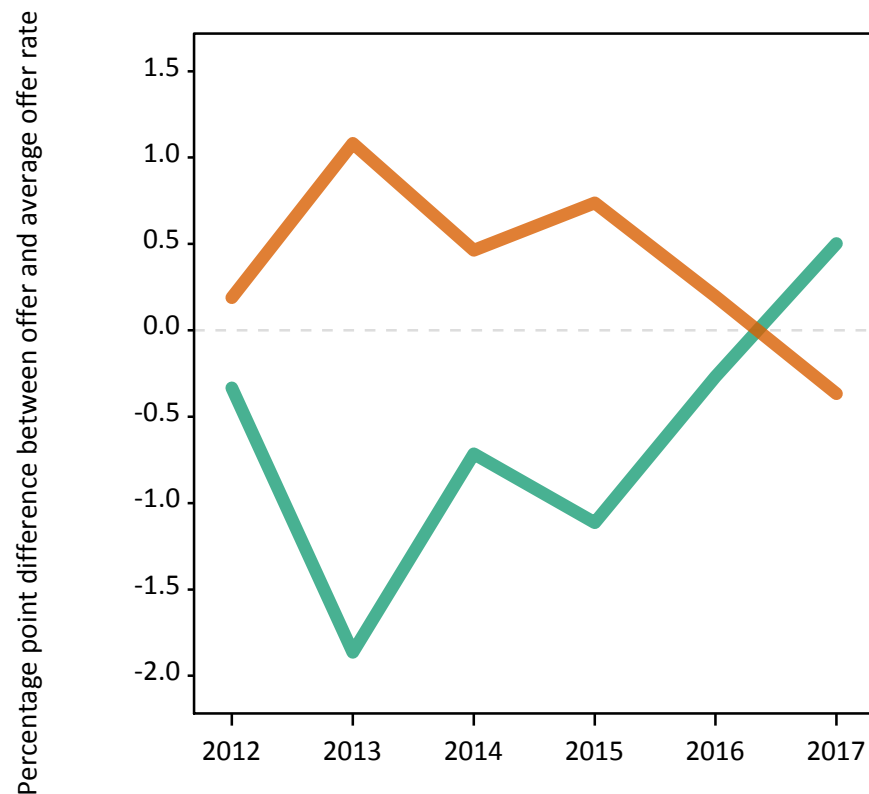
Men
Women



P.6 Percentage point difference between 18 year old offer rate and average offer rate by sex

Note: The line for a group is not plotted when that group made fewer than 50 applications in any of the years from 2012-2017.

Men
Women



P.7 18 year old applicants by POLAR3 quintile

Statistic	POLAR3 quintile	2012	2013	2014	2015	2016	2017
June deadline applicants	Quintile 1	200	170	245	260	260	195
	Quintile 2	415	345	375	455	435	380
	Quintile 3	685	560	645	765	690	660
	Quintile 4	880	745	780	865	845	700
	Quintile 5	995	820	820	950	920	795
Placed June deadline applicants	Quintile 1	50	30	45	50	40	40
	Quintile 2	75	75	85	95	100	85
	Quintile 3	135	115	145	150	135	135
	Quintile 4	165	175	190	200	175	130
	Quintile 5	230	170	185	220	190	150
All placed applicants	Quintile 1	50	30	50	55	45	40
	Quintile 2	75	85	95	100	105	100
	Quintile 3	145	125	160	170	155	145
	Quintile 4	170	200	205	215	190	145
	Quintile 5	240	200	200	245	230	180
June deadline applicants per 10,000 population	Quintile 1	14.2	12.1	17.6	18.6	19.3	14.8
	Quintile 2	27.6	23.5	25.7	30.6	30.0	26.8
	Quintile 3	44.4	36.7	42.9	49.8	45.8	44.2
	Quintile 4	55.5	47.6	50.7	55.2	54.9	45.7
	Quintile 5	59.3	49.7	50.3	56.8	55.6	48.5
Placed June deadline applicants per 10,000 population	Quintile 1	3.6	2.1	3.4	3.6	2.9	2.9
	Quintile 2	4.9	5.2	5.7	6.4	6.8	6.1
	Quintile 3	8.7	7.7	9.8	9.8	8.8	8.9
	Quintile 4	10.3	11.3	12.3	12.6	11.3	8.4
	Quintile 5	13.8	10.3	11.2	13.1	11.6	9.3
All placed applicants per 10,000 population	Quintile 1	3.7	2.2	3.4	3.9	3.3	3.2
	Quintile 2	5.0	5.8	6.4	6.8	7.4	6.9
	Quintile 3	9.3	8.3	10.5	11.0	10.2	9.7
	Quintile 4	10.6	12.8	13.2	13.7	12.4	9.4
	Quintile 5	14.3	12.0	12.3	14.7	13.9	10.8

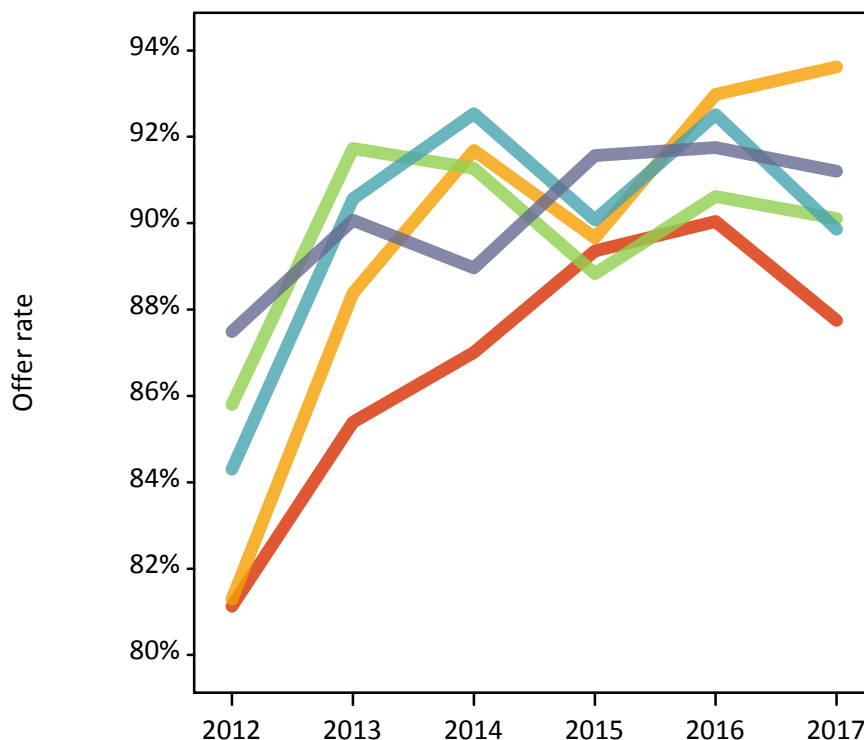
P.8 18 year old applications by POLAR3 quintile

Statistic	POLAR3 quintile	2012	2013	2014	2015	2016	2017
June deadline applications	Quintile 1	210	180	255	265	270	205
	Quintile 2	435	370	395	475	455	390
	Quintile 3	705	570	675	790	715	685
	Quintile 4	910	775	815	905	895	720
	Quintile 5	1,055	855	860	985	960	830
Offers	Quintile 1	170	150	220	235	245	180
	Quintile 2	350	325	365	425	425	365
	Quintile 3	605	520	615	700	645	620
	Quintile 4	770	700	755	815	830	645
	Quintile 5	925	770	765	900	880	755
Offer rate	Quintile 1	81.1%	85.4%	87.0%	89.4%	90.0%	87.7%
	Quintile 2	81.3%	88.4%	91.7%	89.7%	93.0%	93.6%
	Quintile 3	85.8%	91.7%	91.3%	88.8%	90.6%	90.1%
	Quintile 4	84.3%	90.6%	92.5%	90.1%	92.5%	89.9%
	Quintile 5	87.5%	90.1%	89.0%	91.6%	91.8%	91.2%
Average offer rate	Quintile 1	81.8%	88.9%	89.0%	90.0%	91.4%	88.8%
	Quintile 2	82.0%	89.7%	90.4%	89.5%	92.5%	90.8%
	Quintile 3	86.5%	90.3%	91.3%	89.9%	92.0%	90.5%
	Quintile 4	85.0%	90.7%	91.0%	90.3%	91.3%	91.0%
	Quintile 5	86.0%	89.6%	90.4%	90.4%	91.7%	90.9%
Percentage point difference between offer rate and average offer rate	Quintile 1	-0.7	-3.5	-2.0	-0.7	-1.3	-1.0
	Quintile 2	-0.7	-1.3	1.3	0.2	0.5	2.8
	Quintile 3	-0.7	1.4	-0.0	-1.1	-1.4	-0.4
	Quintile 4	-0.7	-0.2	1.6	-0.2	1.2	-1.2
	Quintile 5	1.5	0.5	-1.5	1.2	0.0	0.3
Contribution of group to the average offer rate	Quintile 1	0.164	0.208	0.209	0.166	0.197	0.175
	Quintile 2	0.230	0.269	0.231	0.224	0.246	0.227
	Quintile 3	0.314	0.316	0.332	0.316	0.296	0.333
	Quintile 4	0.360	0.391	0.368	0.352	0.364	0.348
	Quintile 5	0.406	0.417	0.386	0.382	0.377	0.404

P.9 18 year old offer rate by POLAR3 quintile

Note: The line for a group is not plotted when that group made fewer than 10 applications in any of the years from 2012-2017.

- Quintile 1
- Quintile 2
- Quintile 3
- Quintile 4
- Quintile 5



P.10 Percentage point difference between 18 year old offer rate and average offer rate by POLAR3 quintile

Note: The line for a group is not plotted when that group made fewer than 50 applications in any of the years from 2012-2017.

- Quintile 1
- Quintile 2
- Quintile 3
- Quintile 4
- Quintile 5



P.11 18 year old applicants by ethnic group

Statistic	Ethnic group	2012	2013	2014	2015	2016	2017
June deadline applicants	Asian	295	230	290	355	340	305
	Black	265	245	290	300	285	260
	Mixed	140	150	170	185	200	165
	White	2,385	1,945	2,030	2,355	2,235	1,910
	Other	75	65	80	85	75	90
Placed June deadline applicants	Asian	40	25	55	65	35	35
	Black	45	50	55	55	50	55
	Mixed	25	35	35	45	30	35
	White	525	445	480	535	505	405
	Other	10	15	20	15	15	10
All placed applicants	Asian	40	40	60	75	50	45
	Black	50	60	65	65	60	60
	Mixed	30	40	40	50	35	35
	White	540	485	515	580	565	445
	Other	10	15	20	15	15	15
June deadline applicants per 10,000 population	Asian	45.2	34.9	42.8	49.9	47.4	41.2
	Black	93.7	82.5	96.0	94.9	91.4	82.3
	Mixed	54.5	55.8	59.1	60.0	63.9	51.4
	White	36.9	30.9	32.9	37.8	36.9	32.2
	Other	85.9	72.8	86.0	88.2	73.4	85.4
Placed June deadline applicants per 10,000 population	Asian	6.0	3.9	8.0	9.5	4.9	5.0
	Black	16.7	16.5	18.5	16.6	16.3	17.2
	Mixed	10.4	13.3	12.5	13.9	8.9	10.3
	White	8.1	7.1	7.8	8.6	8.4	6.8
	Other	12.4	15.4	21.5	13.5	14.1	9.7
All placed applicants per 10,000 population	Asian	6.3	5.8	9.0	10.9	6.7	6.4
	Black	17.8	19.9	21.1	20.7	19.8	19.1
	Mixed	11.1	14.8	13.9	15.9	10.5	11.5
	White	8.4	7.7	8.3	9.3	9.4	7.5
	Other	13.6	18.7	22.6	13.5	15.1	14.6

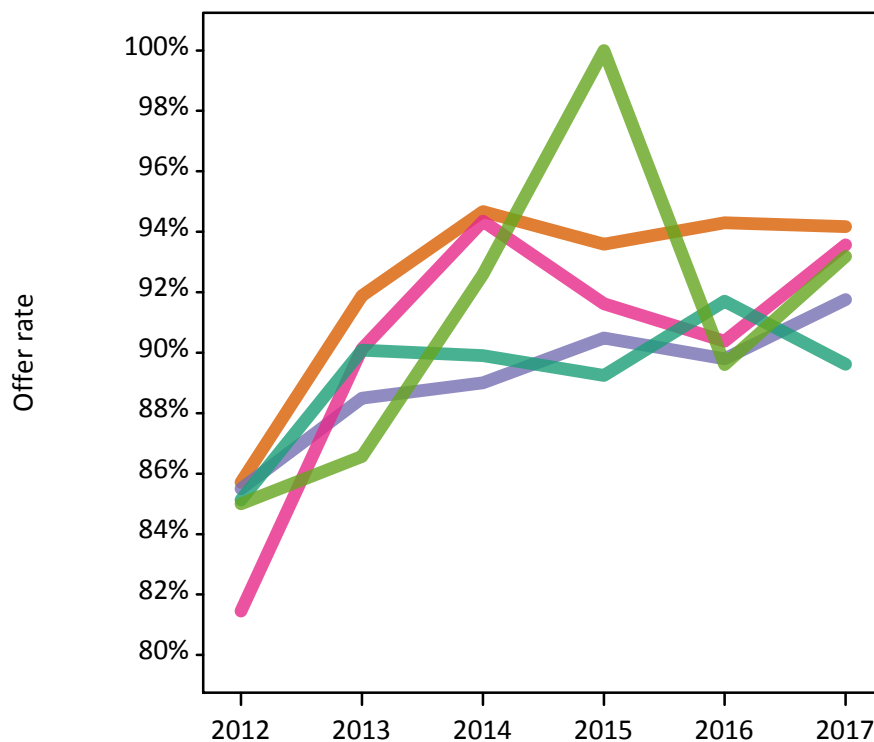
P.12 18 year old applications by ethnic group

Statistic	Ethnic group	2012	2013	2014	2015	2016	2017
June deadline applications	Asian	300	235	300	360	350	310
	Black	270	250	300	305	295	265
	Mixed	150	150	175	190	210	170
	White	2,495	2,040	2,140	2,465	2,350	1,995
	Other	80	65	80	85	75	90
Offers	Asian	260	215	285	335	330	290
	Black	230	225	265	275	265	245
	Mixed	125	135	165	175	190	160
	White	2,125	1,835	1,925	2,200	2,155	1,785
	Other	70	60	75	80	70	80
Offer rate	Asian	85.7%	91.9%	94.7%	93.6%	94.3%	94.2%
	Black	85.5%	88.5%	89.0%	90.5%	89.8%	91.8%
	Mixed	81.5%	90.1%	94.4%	91.6%	90.4%	93.6%
	White	85.1%	90.1%	89.9%	89.2%	91.7%	89.6%
	Other	85.0%	86.6%	92.6%	100.0%	89.6%	93.2%
Average offer rate	Asian	87.2%	91.5%	94.8%	93.2%	93.6%	95.1%
	Black	86.0%	89.2%	90.0%	92.2%	91.8%	91.6%
	Mixed	85.2%	90.5%	93.4%	91.3%	91.4%	92.2%
	White	84.5%	89.9%	89.9%	89.2%	91.3%	89.6%
	Other	87.3%	91.2%	90.9%	91.7%	94.8%	94.4%
Percentage point difference between offer rate and average offer rate	Asian	-1.5	0.4	-0.2	0.4	0.7	-0.9
	Black	-0.5	-0.7	-1.0	-1.7	-2.0	0.2
	Mixed	-3.7	-0.4	0.9	0.4	-1.0	1.4
	White	0.6	0.2	0.0	0.1	0.4	0.1
	Other	-2.3	-4.7	1.7	8.3	-5.2	-1.2
Contribution of group to the average offer rate	Asian	0.253	0.259	0.277	0.249	0.244	0.306
	Black	0.211	0.231	0.267	0.215	0.214	0.223
	Mixed	0.153	0.186	0.172	0.131	0.164	0.193
	White	0.801	0.796	0.768	0.765	0.761	0.761
	Other	0.176	0.155	0.191	0.160	0.133	0.157

P.13 18 year old offer rate by ethnic group

Note: The line for a group is not plotted when that group made fewer than 10 applications in any of the years from 2012-2017.

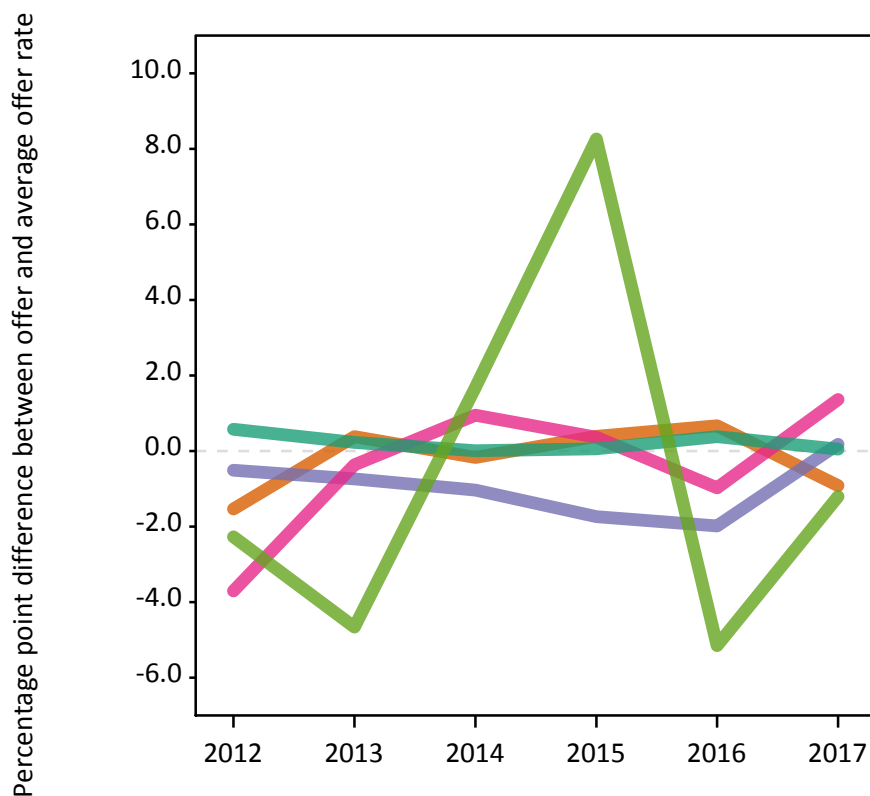
- Asian
- Black
- Mixed
- White
- Other



P.14 Percentage point difference between 18 year old offer rate and average offer rate by ethnic group

Note: The line for a group is not plotted when that group made fewer than 50 applications in any of the years from 2012-2017.

- Asian
- Black
- Mixed
- White
- Other



P.15 Applicants (all ages)

Statistic	2012	2013	2014	2015	2016	2017
June deadline applicants	5,405	4,920	5,110	5,675	5,435	4,615
Placed June deadline applicants	1,140	1,090	1,200	1,265	1,130	915
All placed applicants	1,185	1,265	1,380	1,495	1,370	1,095

P.16 Applications (all ages)

Statistic	2012	2013	2014	2015	2016	2017
June deadline applications	5,740	5,195	5,410	5,955	5,715	4,830
Offers	4,520	4,310	4,675	5,180	5,020	4,105
Offer rate	78.8%	82.9%	86.4%	87.0%	87.9%	85.0%

P.17 Applicants (all ages) by sex

Statistic	Sex	2012	2013	2014	2015	2016	2017
June deadline applicants	Men	2,035	1,935	2,105	2,450	2,360	1,965
	Women	3,375	2,985	3,010	3,220	3,075	2,650
Placed June deadline applicants	Men	490	490	520	565	530	425
	Women	650	600	675	700	595	490
All placed applicants	Men	505	570	610	680	640	515
	Women	680	695	770	815	730	580

P.18 Applications (all ages) by sex

Statistic	Sex	2012	2013	2014	2015	2016	2017
June deadline applications	Men	2,210	2,100	2,290	2,630	2,525	2,110
	Women	3,530	3,100	3,120	3,325	3,190	2,725
Offers	Men	1,800	1,735	1,950	2,285	2,250	1,830
	Women	2,720	2,575	2,725	2,895	2,770	2,275
Offer rate	Men	81.5%	82.7%	85.2%	86.9%	89.1%	86.8%
	Women	77.1%	83.1%	87.3%	87.0%	86.9%	83.6%

P.19 Applicants (all ages) by POLAR3 quintile

Statistic	POLAR3 quintile	2012	2013	2014	2015	2016	2017
June deadline applicants	Quintile 1	365	325	420	420	425	335
	Quintile 2	660	605	635	750	700	610
	Quintile 3	1,225	1,085	1,145	1,290	1,205	1,085
	Quintile 4	1,445	1,360	1,395	1,490	1,435	1,200
	Quintile 5	1,700	1,540	1,505	1,710	1,655	1,380
Placed June deadline applicants	Quintile 1	85	65	90	90	65	60
	Quintile 2	125	135	145	165	165	130
	Quintile 3	245	230	265	260	235	220
	Quintile 4	295	315	330	345	310	215
	Quintile 5	385	345	365	400	350	290
All placed applicants	Quintile 1	90	70	95	100	75	70
	Quintile 2	130	155	165	190	195	150
	Quintile 3	255	260	305	310	290	250
	Quintile 4	305	370	370	405	370	260
	Quintile 5	400	410	435	485	435	365

P.20 Applications (all ages) by POLAR3 quintile

Statistic	POLAR3 quintile	2012	2013	2014	2015	2016	2017
June deadline applications	Quintile 1	390	340	445	430	440	350
	Quintile 2	700	645	670	785	740	635
	Quintile 3	1,295	1,125	1,215	1,355	1,250	1,140
	Quintile 4	1,520	1,435	1,480	1,580	1,515	1,250
	Quintile 5	1,825	1,635	1,590	1,790	1,760	1,450
Offers	Quintile 1	300	280	370	375	385	285
	Quintile 2	545	545	590	680	660	550
	Quintile 3	1,020	920	1,060	1,150	1,095	955
	Quintile 4	1,185	1,190	1,280	1,380	1,345	1,060
	Quintile 5	1,465	1,365	1,365	1,580	1,530	1,245
Offer rate	Quintile 1	76.7%	82.1%	84.0%	87.7%	87.2%	82.2%
	Quintile 2	77.8%	84.1%	87.6%	86.8%	89.3%	86.9%
	Quintile 3	78.8%	81.5%	87.1%	84.7%	87.4%	83.7%
	Quintile 4	78.0%	83.0%	86.7%	87.4%	88.8%	84.7%
	Quintile 5	80.4%	83.5%	85.7%	88.2%	87.0%	86.0%

P.21 Applicants (all ages) by ethnic group

Statistic	Ethnic group	2012	2013	2014	2015	2016	2017
June deadline applicants	Asian	535	460	515	640	605	510
	Black	615	625	640	675	635	535
	Mixed	305	305	360	375	390	310
	White	3,745	3,355	3,410	3,775	3,580	3,045
	Other	165	145	150	165	180	180
Placed June deadline applicants	Asian	75	65	85	115	75	55
	Black	105	120	125	120	120	95
	Mixed	60	75	85	80	80	60
	White	860	800	865	905	815	665
	Other	25	25	30	25	35	30
All placed applicants	Asian	80	90	110	150	110	75
	Black	110	150	160	185	165	125
	Mixed	65	90	100	95	95	75
	White	895	895	955	1,010	935	765
	Other	25	35	35	35	50	40

P.22 Applications (all ages) by ethnic group

Statistic	Ethnic group	2012	2013	2014	2015	2016	2017
June deadline applications	Asian	555	475	535	645	625	520
	Black	635	650	665	705	650	550
	Mixed	335	320	385	395	415	315
	White	4,000	3,565	3,635	3,990	3,795	3,220
	Other	175	150	160	170	185	185
Offers	Asian	440	400	475	585	555	460
	Black	465	505	545	575	560	440
	Mixed	240	255	325	340	360	270
	White	3,215	3,005	3,160	3,485	3,355	2,750
	Other	135	120	140	150	155	150
Offer rate	Asian	79.2%	84.2%	89.3%	90.3%	89.0%	88.8%
	Black	72.8%	77.4%	82.0%	81.7%	85.6%	79.8%
	Mixed	71.4%	79.8%	84.3%	87.0%	86.3%	85.1%
	White	80.4%	84.3%	86.9%	87.2%	88.4%	85.4%
	Other	76.7%	78.7%	88.7%	89.9%	84.2%	82.1%

Technical Notes and Definitions

UCAS undergraduate scheme

Adjustment

Adjustment allows applicants who have met and exceeded the terms of their conditional firm offer to seek and find a place at another provider whilst keeping their place at their original firm choice provider.

Clearing

Clearing is a route for applicants that are not placed and holding no offers to find a place on courses with vacancies.

Cycle year

The UCAS application cycle which runs from September to October the following year. For example the 2017 cycle runs from September 2016 through to October 2017.

End of cycle

The point in the cycle to which the numbers in this report refer, and the point at which the cycle is closed such that no more applications or offers can be made, and no more applicants can be placed. Numbers reported at the end of cycle exclude information on a small number of applicants who cancelled during the cycle.

Extra

Applicants who are unsuccessful in obtaining an offer or decline all offers may be eligible to apply through Extra, where they can apply to one further course at a time. Extra operates from 25 February until early July. It provides applicants who are eligible the possibility of obtaining an offer before exam results are published and Clearing starts.

June 30 deadline

The deadline for main scheme applications. Applicants who apply after this date will go directly into Clearing.

Record of Prior Acceptance (RPA)

RPA is an acceptance route used when a provider informs UCAS of applicants it has accepted outside of the normal application process (e.g. individuals who have applied directly to the provider).

Reporting groups

Ethnic group

High level grouping of ethnic origin as declared by the applicant: 'White', 'Black', 'Asian', 'Mixed', 'Other', 'Unknown'. Applicants who declare themselves as 'Unknown' ethnic origin are not reported in these tables, but are included in the associated csv data file.

POLAR3 quintile

Developed by HEFCE, POLAR3 classifies small areas across the UK into five groups according to their level of young participation in Higher Education. Each of these groups represents around 20 per cent of young people and is ranked from Quintile 1 (areas with the lowest young participation rates, considered as the most disadvantaged) to Quintile 5 (highest young participation rates, considered most advantaged). POLAR3 is based on the participation rates of young people between 2005 and 2009 who entered Higher Education between 2005-06 and 2010-11, therefore is most suitable for applicants aged 19 and under. These groups are assigned using the postcode declared by the applicant at the time of their application. If a UK postcode is invalid, considered unsafe for measurement or there is no link to Census geography possible then the applicant is not assigned to a quintile. Applicants with no POLAR3 quintile are not reported.

Sex

Sex as declared by the applicant.

SIMD 2016 quintile

Scottish index of multiple deprivation (SIMD) identifies small area concentrations of multiple deprivation across all of Scotland, providing a relative measure of deprivation amongst 6505 small areas (data zones) based on 7 socio-economic domains. These small areas are classified into five groups ranked from Quintile 1 (considered the most deprived) to Quintile 5 (considered least deprived), with equal populations in each quintile. Quintiles are assigned using the postcode declared by the applicant, applicants declaring invalid postcodes are classified as 'Not assigned' and are not reported.

SIMD is only defined for applicants domiciled in Scotland, therefore any applicants domiciled outside of Scotland cannot be assigned to an SIMD quintile and so are not reported for this measure.

SIMD is only reported for providers in Scotland. Application and entry rates by SIMD are reported in the 2017 End of Cycle Report and the 2017 cycle January deadline application rate report.

Statistics reported in the tables

All placed applicants

The number of applicants placed for entry into higher education at the provider through one of their choices, including any choices made through Extra, or via Adjustment, Clearing or RPA.

All placed applicants per 10,000 population

The number of total UK domiciled 18 year old placed applicants for entry into higher education at the provider divided by the number of UK 18 year olds in the population, multiplied by 10,000. This gives the number of 18 year olds, for every 10,000 in the population, that were placed at the provider through one of their choices, including any choices made through Extra, or via Adjustment, Clearing or RPA. It is an alternative way of expressing the entry rate to a provider. By referencing the underlying population this statistic shows how the number of placed applicants is changing in relation to the available pool of potential applicants and so gives the chance that somebody from the group will be placed at a provider.

This statistic is only reported for 18 year olds.

Average offer rate

The offer rate that you might expect if the predicted grades and subject choice of applicants were the only factors that influenced whether an applicant was made an offer by the provider. The average offer rate is calculated by dividing applicants according to their specific combination of grades (for A levels the best three predicted grades are used, for BTECs, International Baccalaureate and Scottish Highers and Advanced Highers, predicted grades along with any grades already achieved upon applying are used) and subject choice. For each combination the number of main scheme offers is divided by the number of main scheme applications, to give an overall offer rate. This is then multiplied by the number of applications made by the group for which the average offer rate is being calculated (for example POLAR3 quintile 1), to give an average number of offers for that group. These average number of offers are then added together across all combinations of predicted grade and subject and divided by the number of main scheme applications from the group to give the average offer rate.

The average offer rate does not attempt to control for any other factors that may play a part in the decision to make an offer, such as the subject of the qualifications studied, their relevance to a course, or the grade in each subject; higher numbers of A levels being studied; the exact profile of grades predicted; personal statements; teacher references; interviews; or any other criteria (such as work experience or portfolios) that may be part of the admissions decision.

This statistic is only reported for 18 year olds.

Contribution of group to the average offer rate

The way in which the average offer rate is defined means that the pattern of application and offers of a group (for example POLAR3 quintile 1) will always contribute, in part, to the average offer rate for that group. When this contribution is large, the average offer rate will mainly reflect the patterns for the group, meaning that the value of the average offer rate will be similar to the offer rate, the percentage point difference statistic will be small, and any real difference between the offer rate and what might be expected given the predicted grades and subject choices of the applicants will be difficult to detect.

Values of the contribution of group to the average offer rate range between 0 and 1. The closer the value is to 1 the greater the contribution a group makes to its own average offer rate.

This statistic is only reported for 18 year olds.

Placed June deadline applicants

An applicant who has been placed for entry into higher education at the provider through a June deadline application.

Placed June deadline applicants per 10,000 population

The number of UK domiciled 18 year old placed June deadline applicants at the provider divided by the number of UK 18 year olds in the population, multiplied by 10,000. This gives the number of 18 year olds, for every 10,000 in the population, that were placed at the provider through one of their June deadline applications. It is an alternative way of expressing the entry rate to a provider, but for placed June deadline applicants only. By referencing the underlying population this statistic shows how the number of placed June deadline applicants is changing in relation to the available pool of potential 18 year old applicants and so gives the chance that somebody from the group will be placed at a provider through a June deadline application.

This statistic is only reported for 18 year olds.

June deadline applications

An application (or choice) to a course in higher education to the provider that is made by the June 30 deadline. Each applicant can make up to five choices this way. The number of June deadline applications does not include choices made through the following routes: Clearing, Extra, Adjustment and RPAs. Applications made to October deadline courses received after the October deadline are not included in these statistics.

June deadline applicants

The number of applicants that made at least one application to the provider by the June 30 deadline.

June deadline applicants per 10,000 population

The number of UK domiciled 18 year old June deadline applicants to the provider divided by the number of UK 18 year olds in the population, multiplied by 10,000. This gives the number of 18 year olds, for every 10,000 in the population, who applied by the June 30 deadline. It is equivalent to the application rate. By referencing the underlying population this statistic shows how the number of June deadline applicants is changing in relation to the available pool of potential 18 year old applicants and so gives the chance that somebody from the group will apply to a provider by the June 30 deadline.

This statistic is only reported for 18 year olds.

Offers

An offer is defined as a provider's decision in response to an application to offer a place to an applicant, often subject to the applicant satisfying academic and/or other criteria, via a June deadline application (i.e. does not cover choices made through the following routes: Clearing, Extra, Adjustment and RPAs).

Offer rate

The number of offers made divided by the number of June deadline applications. This gives the proportion of all June deadline applications to the provider that received an offer.

Percentage point difference between offer rate and average offer rate

The offer rate minus the average offer rate.

The percentage point difference can be compared to the expected range of statistical variation resulting from the calculation of the average offer rate using the Average Offer Rate Lookup Table. Where the value of the percentage point difference lies outside of this range, the percentage point difference may be considered to represent a real difference between the offer rate and the average offer rate.

Other definitions

Age

This analysis uses country-specific age definitions that align with the cut off points for school and college cohorts within the different administrations of the UK. For England and Wales, ages are defined on the 31 August, for Northern Ireland on the 1 July and for Scotland on the 28 February the following year. Defining ages in this way matches the assignment of children to school cohorts. For applicants outside of the UK a cohort cut off of 31 August has been used. Numbers for applicants aged 17 and under are included in the tables that report numbers for all age groups. Providers in Scotland typically receive a higher proportion of applicants aged 17 and under compared to providers elsewhere in the UK.

Provider

A higher education provider - a university or college.

UK domiciled

Declared area of permanent residence within England, Northern Ireland, Scotland and Wales. Applicants from the Channel Islands and Isle of Man are not included.