

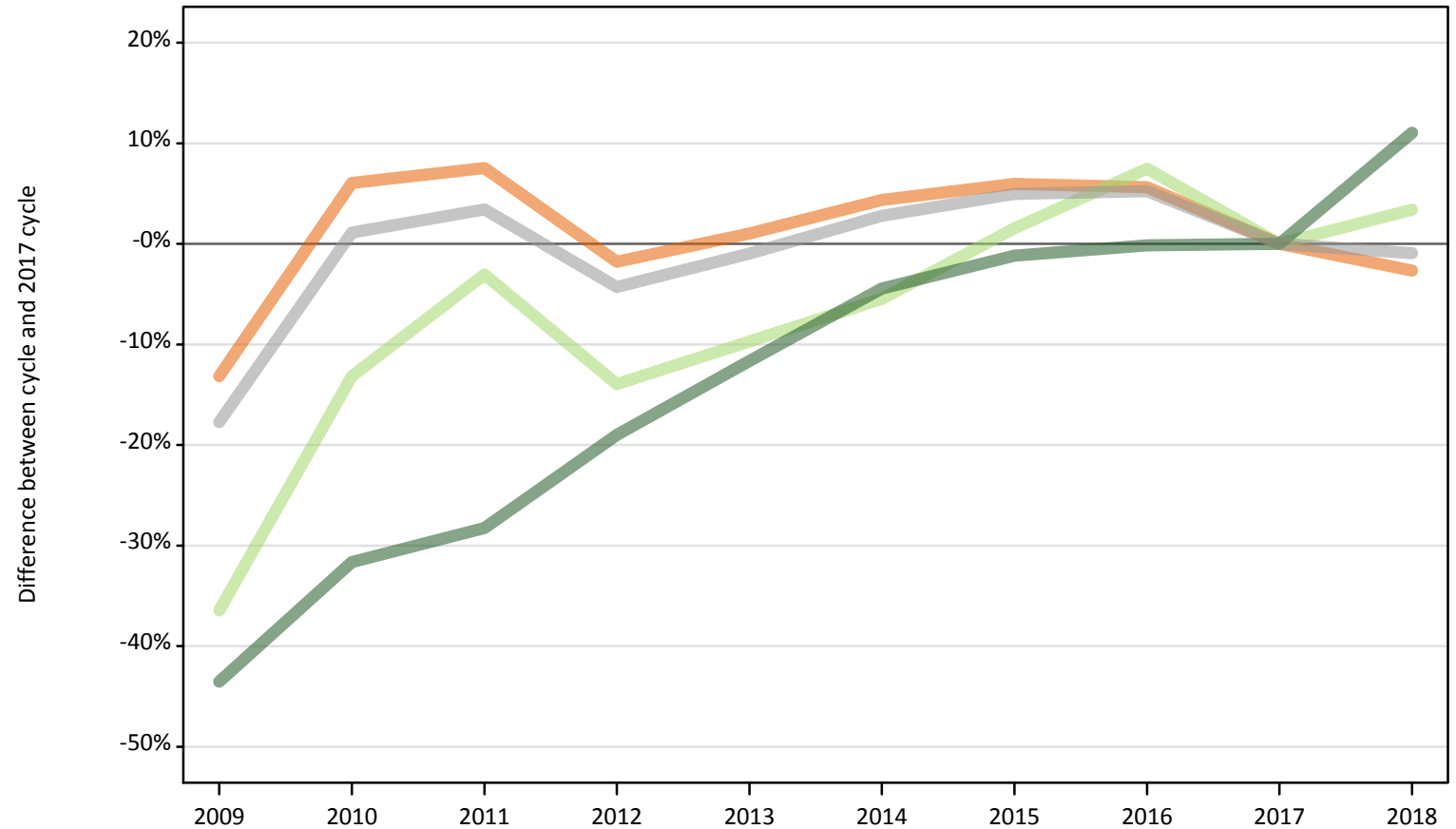
January Deadline Analysis: Domicile

Applicants by domicile at the 15 January deadline

D.1.1 Applicants by domicile group

Difference between cycle and 2017 cycle

- UK
- EU (excluding UK)
- Not EU
- All domiciles



D.1.2 Applicants by domicile group

Domicile group of applicant	2009	2010	2011	2012	2013	2014	2015	2016	2017	2018
UK	407,680	498,000	504,980	461,180	474,310	489,940	497,550	495,940	469,490	457,070
EU (excluding UK)	26,730	36,530	40,790	36,210	37,990	39,780	42,720	45,220	42,070	43,510
Not EU	29,730	35,980	37,760	42,640	46,510	50,290	52,020	52,560	52,630	58,450
All domiciles	464,140	570,510	583,530	540,020	558,820	580,000	592,290	593,720	564,190	559,030

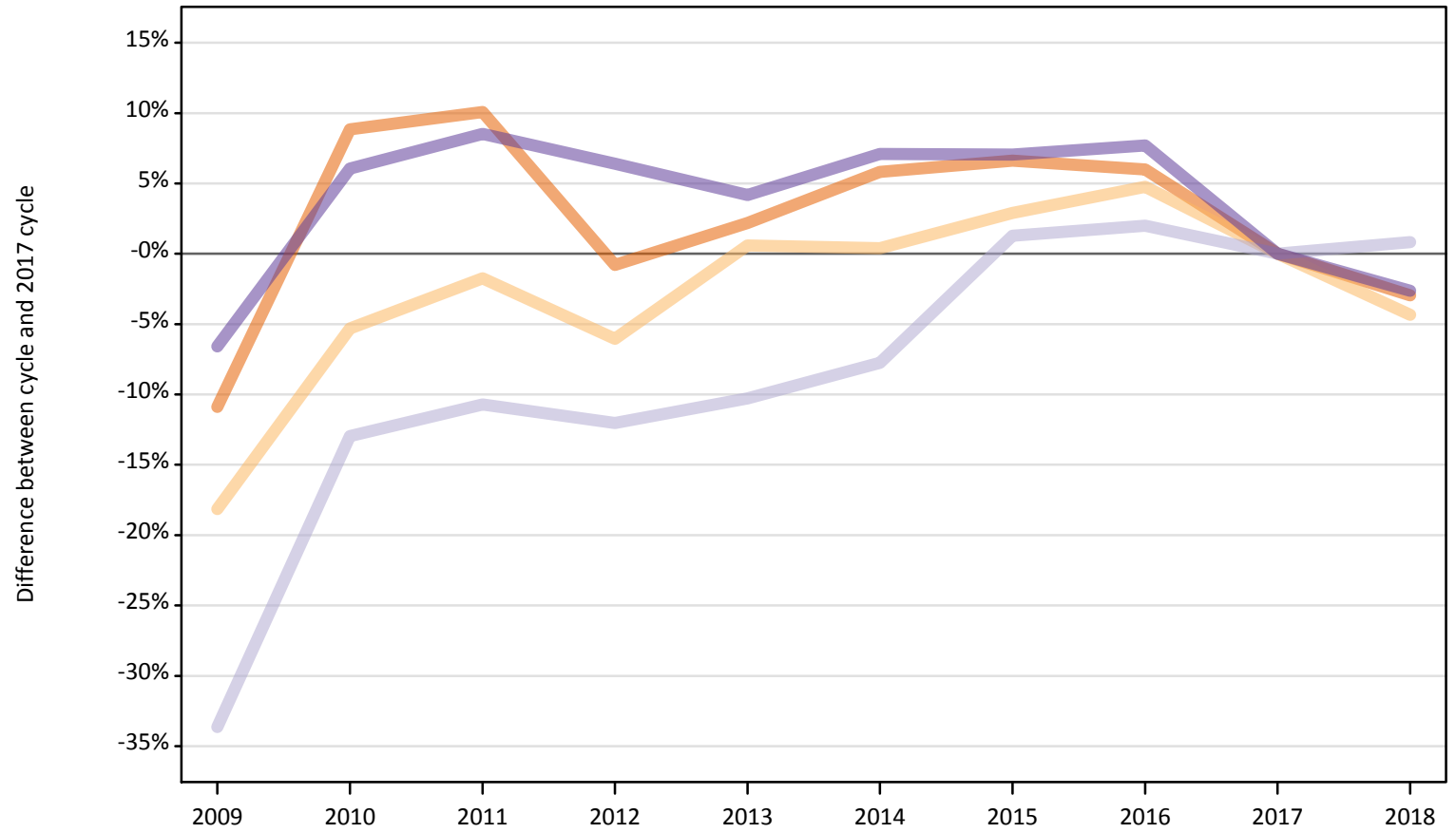
D.1.3 Applicants by domicile group

Difference between cycle and 2017 cycle

Domicile group of applicant	2009	2010	2011	2012	2013	2014	2015	2016	2017	2018
UK	-13%	6%	8%	-2%	1%	4%	6%	6%	0%	-3%
EU (excluding UK)	-36%	-13%	-3%	-14%	-10%	-5%	2%	7%	0%	3%
Not EU	-44%	-32%	-28%	-19%	-12%	-4%	-1%	-0%	0%	11%
All domiciles	-18%	1%	3%	-4%	-1%	3%	5%	5%	0%	-1%

D.1.4 Applicants by UK country of domicile
Difference between cycle and 2017 cycle

- England
- Northern Ireland
- Scotland
- Wales



D.1.5 Applicants by UK country of domicile

Domicile group of applicant	2009	2010	2011	2012	2013	2014	2015	2016	2017	2018
England	343,860	419,990	424,800	382,840	394,330	408,300	411,420	408,990	385,870	374,440
Northern Ireland	15,940	18,440	19,130	18,290	19,590	19,550	20,040	20,400	19,470	18,630
Scotland	29,550	38,760	39,760	39,170	39,950	41,080	45,100	45,420	44,530	44,900
Wales	18,330	20,810	21,290	20,880	20,440	21,010	21,000	21,130	19,620	19,100
UK	407,680	498,000	504,980	461,180	474,310	489,940	497,550	495,940	469,490	457,070

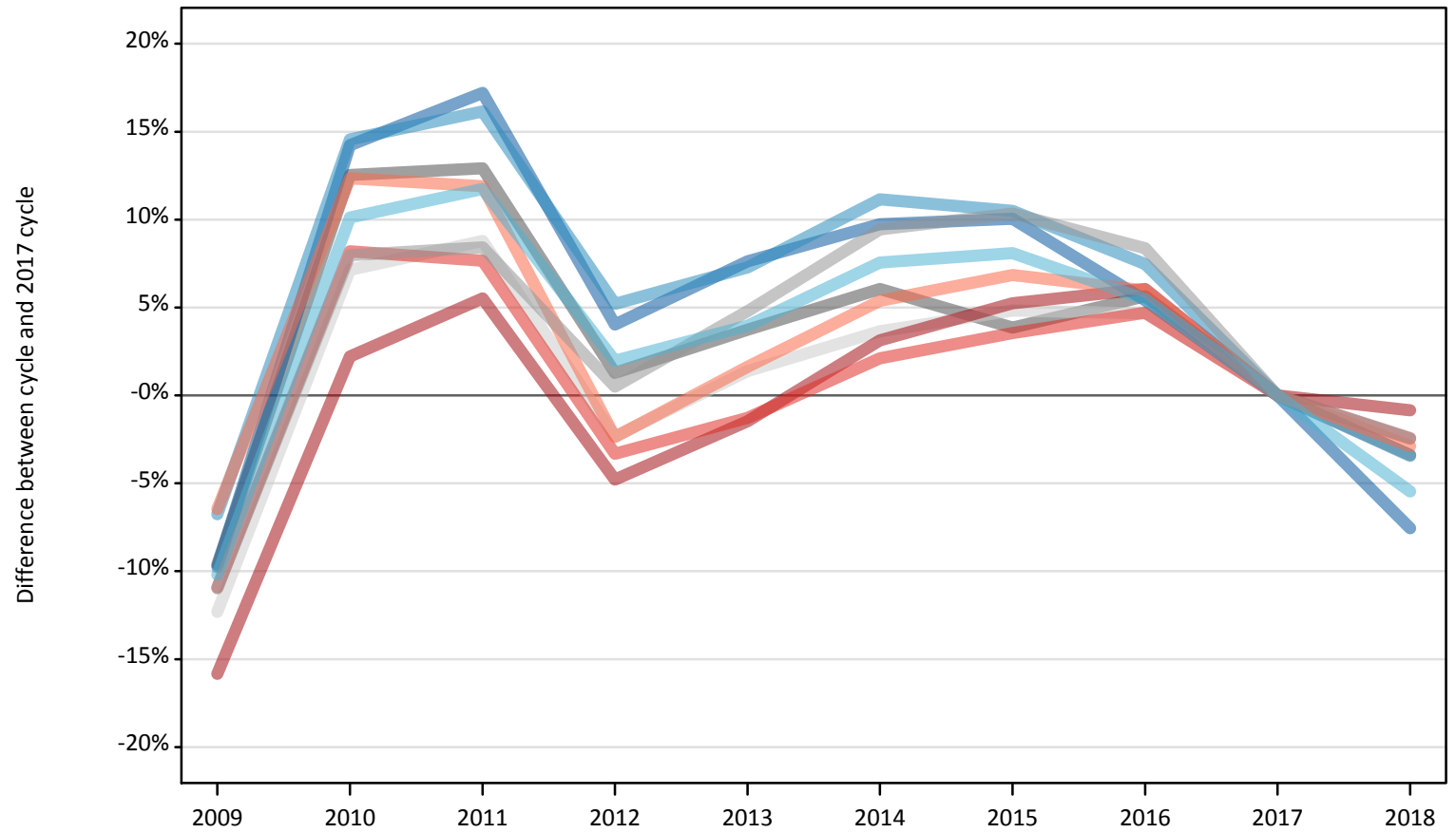
D.1.6 Applicants by UK country of domicile

Difference between cycle and 2017 cycle

Domicile group of applicant	2009	2010	2011	2012	2013	2014	2015	2016	2017	2018
England	-11%	9%	10%	-1%	2%	6%	7%	6%	0%	-3%
Northern Ireland	-18%	-5%	-2%	-6%	1%	0%	3%	5%	0%	-4%
Scotland	-34%	-13%	-11%	-12%	-10%	-8%	1%	2%	0%	1%
Wales	-7%	6%	9%	6%	4%	7%	7%	8%	0%	-3%
UK	-13%	6%	8%	-2%	1%	4%	6%	6%	0%	-3%

D.1.7 Applicants by English region of domicile
Difference between cycle and 2017 cycle

- East Midlands
- East of England
- London
- North East
- North West
- South East
- South West
- West Midlands
- Yorkshire and The Humber



D.1.8 Applicants by English region of domicile

English region	2009	2010	2011	2012	2013	2014	2015	2016	2017	2018
North East	14,650	18,540	19,030	16,890	17,470	17,810	17,860	17,110	16,230	15,010
North West	46,430	57,040	57,840	52,380	53,420	55,350	55,010	53,510	49,790	48,090
Yorkshire and The Humber	31,280	38,350	38,920	35,510	36,210	37,460	37,650	36,730	34,830	32,920
East Midlands	26,790	33,360	33,470	30,020	30,750	31,430	30,780	31,310	29,640	28,630
West Midlands	35,530	43,090	43,270	40,110	41,820	43,680	44,040	43,250	39,910	38,940
East of England	35,190	43,000	43,650	39,190	40,680	41,590	42,070	42,000	40,130	38,740
London	64,190	77,950	80,470	72,620	75,150	78,660	80,270	80,880	76,270	75,620
South East	56,930	69,170	68,820	61,800	63,110	65,280	66,190	66,930	63,920	62,360
South West	32,880	39,490	39,340	34,320	35,730	37,040	37,560	37,250	35,150	34,140

D.1.9 Applicants by English region of domicile

Difference between cycle and 2017 cycle

English region	2009	2010	2011	2012	2013	2014	2015	2016	2017	2018
North East	-10%	14%	17%	4%	8%	10%	10%	5%	0%	-8%
North West	-7%	15%	16%	5%	7%	11%	10%	7%	0%	-3%
Yorkshire and The Humber	-10%	10%	12%	2%	4%	8%	8%	5%	0%	-5%
East Midlands	-10%	13%	13%	1%	4%	6%	4%	6%	0%	-3%
West Midlands	-11%	8%	8%	0%	5%	9%	10%	8%	0%	-2%
East of England	-12%	7%	9%	-2%	1%	4%	5%	5%	0%	-3%
London	-16%	2%	6%	-5%	-1%	3%	5%	6%	0%	-1%
South East	-11%	8%	8%	-3%	-1%	2%	4%	5%	0%	-2%
South West	-6%	12%	12%	-2%	2%	5%	7%	6%	0%	-3%

D.1.10 Applicants by declared country of domicile

Selected countries

Declared country of domicile	2009	2010	2011	2012	2013	2014	2015	2016	2017	2018
Angola	20	30	40	40	50	50	110	100	50	50
Australia	230	310	320	400	450	480	510	480	480	530
Austria	380	420	490	500	520	540	570	590	520	560
Azerbaijan	70	150	110	140	150	190	180	120	90	80
Bahrain	170	210	210	240	280	280	250	260	310	300
Bangladesh	200	250	240	250	210	210	210	170	170	190
Belgium	770	860	900	790	860	920	990	1,000	970	970
Bermuda	170	270	200	170	150	170	150	180	160	210
Botswana	20	30	30	40	60	90	130	120	120	100
Brazil	100	130	110	150	160	190	230	230	200	270
Brunei	300	590	460	460	550	650	380	280	240	230
Bulgaria	1,340	1,940	2,230	2,140	2,440	2,160	2,130	2,320	2,080	2,080
Canada	1,200	1,430	1,510	1,670	1,700	1,690	1,750	1,660	1,490	1,680
Cayman Islands	30	50	90	90	80	110	80	100	110	140
China	3,640	4,450	5,240	6,280	6,900	7,170	8,010	9,000	9,880	11,920
Croatia	30	30	30	30	60	120	190	270	230	300
Cyprus (European Union)	1,250	2,910	3,460	2,840	2,850	2,810	2,780	2,710	2,800	2,360
Cyprus (Not otherwise specified)	1,400	60	50	30	30	20	10	20	40	20
Czech Republic	260	370	420	400	410	520	680	910	890	910
Denmark	250	390	380	360	400	390	410	440	460	470
Ecuador	10	10	10	10	30	50	60	150	110	40
Egypt	120	150	170	240	380	470	540	610	610	570
Estonia	310	440	560	480	550	440	450	420	340	340
Finland	490	640	790	660	720	800	900	910	760	840
France	2,000	2,630	3,480	3,180	3,380	3,850	4,340	4,650	4,480	4,590
Germany	2,670	3,300	3,490	2,940	2,750	2,740	2,910	3,150	2,820	2,990
Ghana	150	180	140	150	140	190	170	170	220	260
Gibraltar	200	270	290	270	290	270	270	270	260	270
Greece	1,490	1,860	2,050	1,860	1,990	1,970	1,970	2,040	1,990	1,960
Guernsey	300	330	300	290	280	290	310	320	250	300
Hong Kong	2,730	3,140	3,640	5,000	5,050	5,460	5,260	5,180	5,120	5,320
Hungary	250	360	360	520	720	730	790	880	820	930

Declared country of domicile	2009	2010	2011	2012	2013	2014	2015	2016	2017	2018
India	1,340	1,750	1,870	2,190	2,610	2,870	3,020	3,050	3,290	4,470
Indonesia	130	140	210	250	350	380	480	460	510	630
Iran	170	230	260	270	180	170	150	160	200	250
Ireland	4,870	7,320	6,710	5,430	5,450	5,230	5,170	4,750	3,900	3,740
Isle of Man	430	540	540	490	470	480	450	470	490	450
Israel	70	90	80	90	110	90	110	110	90	130
Italy	1,160	1,740	2,070	2,230	2,730	3,440	4,120	4,270	3,780	3,750
Japan	250	290	320	350	400	440	390	380	360	430
Jersey	510	570	570	540	510	480	490	530	540	520
Jordan	190	240	280	280	330	330	330	320	380	440
Kazakhstan	280	350	280	250	280	270	270	240	190	210
Kenya	410	490	470	490	500	510	510	490	480	490
Korea (South)	640	800	1,060	1,030	1,110	1,050	1,160	1,260	1,290	1,310
Kuwait	130	190	200	240	240	290	330	330	410	440
Latvia	450	960	890	640	480	460	450	500	460	470
Lebanon	60	80	110	140	160	180	210	300	260	320
Lithuania	1,060	2,150	2,940	2,160	1,860	1,680	1,520	1,580	1,680	1,740
Luxembourg	300	330	360	360	400	440	420	410	410	440
Macao	70	70	90	130	120	150	220	180	240	220
Malaysia	1,860	2,080	2,270	2,590	3,230	4,080	4,210	4,070	3,030	2,850
Malta	90	120	120	80	100	90	90	110	90	110
Mauritius	260	360	320	330	250	340	280	290	250	260
Mexico	80	110	90	100	110	110	130	150	130	190
Morocco	80	110	140	170	220	270	290	270	270	340
Netherlands	570	700	720	650	680	710	770	810	820	800
New Zealand	100	100	120	120	140	160	160	180	170	180
Nigeria	960	1,020	1,030	960	1,060	1,120	1,060	920	850	740
Norway	630	850	810	840	990	960	990	810	860	930
Oman	90	110	120	110	140	160	210	210	210	230
Pakistan	1,460	1,670	1,440	1,370	1,370	1,350	1,390	1,460	1,520	1,740
Philippines	70	80	80	80	100	100	130	110	110	140
Poland	1,570	1,700	1,740	1,630	1,880	2,160	2,400	3,060	3,000	3,700
Portugal	430	490	590	550	680	710	900	930	1,080	1,280
Qatar	120	130	150	180	270	230	270	310	290	310

Declared country of domicile	2009	2010	2011	2012	2013	2014	2015	2016	2017	2018
Romania	820	1,420	2,250	2,210	2,110	2,340	2,930	3,100	2,630	2,540
Russia	440	530	560	630	820	1,000	1,130	910	800	760
Saudi Arabia	540	530	490	530	560	580	600	600	580	640
Serbia	40	60	60	80	120	100	90	120	110	110
Singapore	2,010	2,420	2,790	3,240	3,460	3,730	3,560	3,210	3,060	3,030
Slovakia	290	370	410	420	400	530	520	730	540	700
Slovenia	60	80	100	90	120	140	150	150	140	140
South Africa	180	190	170	190	220	250	310	340	530	410
Spain	900	1,140	1,430	1,380	1,770	2,140	2,520	2,940	2,940	3,340
Sri Lanka	280	310	310	260	250	240	190	190	230	240
Sweden	1,140	1,540	1,490	1,360	1,360	1,370	1,300	1,220	1,030	1,070
Switzerland	640	780	810	870	1,010	1,030	1,150	1,170	1,130	1,300
Taiwan	160	180	230	240	230	270	300	280	320	370
Tanzania	80	110	110	100	110	140	120	100	90	110
Thailand	340	450	520	580	550	630	650	660	660	710
Trinidad and Tobago	130	130	140	140	150	140	180	190	160	170
Turkey	250	290	320	380	450	490	510	640	790	1,100
Uganda	90	90	70	90	100	90	90	110	110	100
Ukraine	110	160	160	180	250	270	230	200	190	190
United Arab Emirates	430	590	640	740	830	1,000	1,150	1,230	1,550	1,800
United States of America	1,920	2,260	2,150	2,370	2,710	2,930	3,080	3,260	3,220	3,840
Vietnam	370	450	470	530	520	460	370	300	310	290
Zambia	80	90	80	90	100	100	100	90	110	90
Zimbabwe	190	250	190	230	220	240	260	280	280	320

D.1.11 Applicants by declared country of domicile
 Selected countries, difference between cycle and 2017 cycle

Declared country of domicile	2009	2010	2011	2012	2013	2014	2015	2016	2017	2018
Angola	-51%	-24%	-20%	-13%	9%	13%	147%	111%	0%	18%
Australia	-51%	-35%	-34%	-17%	-5%	1%	7%	0%	0%	12%
Austria	-28%	-20%	-7%	-4%	0%	4%	9%	13%	0%	7%
Azerbaijan	-29%	66%	23%	54%	56%	108%	89%	29%	0%	-11%
Bahrain	-45%	-32%	-32%	-22%	-12%	-11%	-21%	-19%	0%	-5%
Bangladesh	20%	46%	40%	48%	23%	25%	25%	-2%	0%	9%
Belgium	-21%	-11%	-8%	-19%	-11%	-5%	2%	3%	0%	0%
Bermuda	7%	74%	26%	6%	-1%	7%	-1%	15%	0%	35%
Botswana	-81%	-78%	-75%	-64%	-53%	-25%	12%	-3%	0%	-18%
Brazil	-50%	-34%	-44%	-27%	-18%	-5%	14%	15%	0%	35%
Brunei	25%	143%	91%	92%	127%	171%	56%	15%	0%	-3%
Bulgaria	-36%	-7%	7%	3%	17%	4%	2%	11%	0%	0%
Canada	-20%	-4%	1%	12%	14%	13%	17%	11%	0%	13%
Cayman Islands	-72%	-52%	-17%	-19%	-23%	-3%	-22%	-6%	0%	28%
China	-63%	-55%	-47%	-36%	-30%	-27%	-19%	-9%	0%	21%
Croatia	-86%	-88%	-85%	-86%	-75%	-48%	-19%	16%	0%	30%
Cyprus (European Union)	-56%	4%	23%	1%	2%	0%	-1%	-3%	0%	-16%
Cyprus (Not otherwise specified)	3783%	61%	28%	-6%	-8%	-44%	-78%	-47%	0%	-36%
Czech Republic	-71%	-59%	-53%	-55%	-54%	-42%	-23%	2%	0%	2%
Denmark	-46%	-17%	-17%	-22%	-14%	-16%	-11%	-4%	0%	2%
Ecuador	-90%	-88%	-91%	-88%	-70%	-53%	-44%	28%	0%	-62%
Egypt	-81%	-76%	-71%	-61%	-37%	-22%	-11%	1%	0%	-5%
Estonia	-11%	28%	64%	39%	58%	28%	30%	21%	0%	-1%
Finland	-36%	-17%	3%	-14%	-5%	5%	17%	19%	0%	10%
France	-55%	-41%	-22%	-29%	-25%	-14%	-3%	4%	0%	2%
Germany	-5%	17%	24%	4%	-2%	-3%	3%	12%	0%	6%
Ghana	-33%	-19%	-35%	-33%	-38%	-15%	-23%	-20%	0%	19%
Gibraltar	-24%	2%	11%	1%	10%	3%	3%	3%	0%	3%
Greece	-25%	-7%	3%	-6%	0%	-1%	-1%	3%	0%	-1%
Guernsey	20%	33%	18%	14%	13%	15%	22%	25%	0%	20%
Hong Kong	-47%	-39%	-29%	-2%	-1%	7%	3%	1%	0%	4%
Hungary	-70%	-56%	-56%	-37%	-13%	-11%	-4%	7%	0%	13%

Declared country of domicile	2009	2010	2011	2012	2013	2014	2015	2016	2017	2018
India	-59%	-47%	-43%	-34%	-21%	-13%	-8%	-7%	0%	36%
Indonesia	-74%	-72%	-59%	-51%	-31%	-25%	-6%	-9%	0%	23%
Iran	-13%	18%	32%	37%	-11%	-13%	-26%	-17%	0%	26%
Ireland	25%	88%	72%	39%	40%	34%	33%	22%	0%	-4%
Isle of Man	-11%	12%	10%	2%	-3%	-1%	-8%	-2%	0%	-6%
Israel	-22%	7%	-12%	1%	33%	2%	22%	27%	0%	51%
Italy	-69%	-54%	-45%	-41%	-28%	-9%	9%	13%	0%	-1%
Japan	-32%	-20%	-12%	-3%	11%	22%	8%	6%	0%	18%
Jersey	-7%	4%	6%	-0%	-6%	-12%	-9%	-2%	0%	-4%
Jordan	-50%	-37%	-25%	-26%	-14%	-13%	-14%	-16%	0%	16%
Kazakhstan	43%	79%	45%	30%	44%	38%	37%	23%	0%	9%
Kenya	-14%	2%	-1%	3%	6%	7%	7%	2%	0%	3%
Korea (South)	-50%	-38%	-18%	-20%	-14%	-18%	-10%	-2%	0%	2%
Kuwait	-69%	-54%	-51%	-42%	-42%	-30%	-20%	-18%	0%	7%
Latvia	-3%	106%	93%	38%	4%	-1%	-2%	8%	0%	2%
Lebanon	-75%	-68%	-57%	-45%	-38%	-29%	-18%	15%	0%	25%
Lithuania	-37%	28%	75%	28%	10%	-0%	-10%	-6%	0%	3%
Luxembourg	-27%	-20%	-13%	-13%	-1%	9%	3%	1%	0%	7%
Macao	-73%	-73%	-62%	-47%	-50%	-36%	-9%	-23%	0%	-10%
Malaysia	-39%	-32%	-25%	-15%	7%	34%	39%	34%	0%	-6%
Malta	-4%	32%	25%	-11%	2%	-9%	-5%	17%	0%	22%
Mauritius	4%	41%	25%	28%	-1%	35%	11%	15%	0%	3%
Mexico	-39%	-12%	-30%	-24%	-11%	-12%	2%	21%	0%	52%
Morocco	-69%	-60%	-48%	-39%	-20%	-1%	8%	-0%	0%	25%
Netherlands	-30%	-15%	-13%	-21%	-17%	-14%	-6%	-1%	0%	-2%
New Zealand	-39%	-39%	-27%	-25%	-18%	-5%	-1%	10%	0%	9%
Nigeria	13%	19%	21%	12%	25%	32%	24%	8%	0%	-13%
Norway	-26%	-1%	-5%	-2%	16%	12%	15%	-5%	0%	9%
Oman	-59%	-50%	-45%	-46%	-32%	-23%	-2%	-3%	0%	7%
Pakistan	-4%	10%	-6%	-10%	-10%	-11%	-9%	-4%	0%	14%
Philippines	-41%	-32%	-24%	-31%	-10%	-10%	16%	1%	0%	22%
Poland	-48%	-43%	-42%	-46%	-37%	-28%	-20%	2%	0%	23%
Portugal	-61%	-54%	-45%	-49%	-37%	-34%	-17%	-14%	0%	19%
Qatar	-58%	-56%	-48%	-38%	-8%	-22%	-8%	8%	0%	7%

Declared country of domicile	2009	2010	2011	2012	2013	2014	2015	2016	2017	2018
Romania	-69%	-46%	-15%	-16%	-20%	-11%	11%	18%	0%	-3%
Russia	-45%	-34%	-30%	-21%	2%	25%	41%	13%	0%	-5%
Saudi Arabia	-7%	-10%	-17%	-9%	-3%	-1%	3%	2%	0%	10%
Serbia	-60%	-45%	-47%	-30%	5%	-11%	-21%	5%	0%	-5%
Singapore	-34%	-21%	-9%	6%	13%	22%	16%	5%	0%	-1%
Slovakia	-46%	-32%	-24%	-22%	-26%	-3%	-4%	34%	0%	28%
Slovenia	-58%	-40%	-31%	-32%	-17%	2%	10%	5%	0%	4%
South Africa	-66%	-64%	-69%	-64%	-58%	-52%	-42%	-35%	0%	-23%
Spain	-70%	-61%	-51%	-53%	-40%	-27%	-14%	-0%	0%	13%
Sri Lanka	22%	33%	35%	13%	8%	5%	-18%	-19%	0%	4%
Sweden	10%	50%	45%	32%	32%	33%	26%	19%	0%	4%
Switzerland	-44%	-31%	-29%	-23%	-11%	-9%	1%	4%	0%	15%
Taiwan	-51%	-43%	-29%	-27%	-30%	-18%	-7%	-14%	0%	15%
Tanzania	-10%	14%	16%	6%	23%	49%	27%	11%	0%	15%
Thailand	-48%	-32%	-22%	-12%	-17%	-4%	-1%	-0%	0%	8%
Trinidad and Tobago	-18%	-18%	-9%	-13%	-6%	-9%	17%	18%	0%	11%
Turkey	-68%	-64%	-60%	-52%	-44%	-39%	-36%	-19%	0%	39%
Uganda	-17%	-16%	-33%	-17%	-7%	-12%	-12%	0%	0%	-7%
Ukraine	-42%	-15%	-19%	-5%	32%	39%	20%	6%	0%	0%
United Arab Emirates	-72%	-62%	-59%	-53%	-47%	-36%	-26%	-21%	0%	16%
United States of America	-40%	-30%	-33%	-26%	-16%	-9%	-4%	1%	0%	19%
Vietnam	18%	44%	50%	68%	67%	45%	17%	-4%	0%	-8%
Zambia	-32%	-25%	-31%	-18%	-14%	-16%	-13%	-18%	0%	-20%
Zimbabwe	-32%	-11%	-31%	-16%	-23%	-13%	-7%	-1%	0%	14%

D.1.12 Technical notes and definitions

Applicants have been able to submit applications for all 2018 courses since early September.

Applicants who submit their applications to UCAS by the January deadline are considered as 'on time' applicants for the large majority of courses offered through UCAS.

This statistical release covers all Main Scheme applicants who submit their applications to UCAS by the January deadline, including those who have applied for courses with a 15 October deadline. Counts of RPAs (records of prior acceptance) are not included.

Counts of the number of applicants reported have been rounded to the nearest 10 applicants, this may result in instances where totals do not equal the sum of the components. Proportional changes have been rounded to the nearest whole percentage point.

In 2009, the Canary Islands classification changed from Not EU to EU (excluding UK). In order to present an accurate time series, the Canary Islands have been consistently classified as EU (excluding UK). This will result in differences with data published prior to 2010.

Age

This statistical release uses country-specific age definitions which align with the cut off points for school/college cohorts within the different administrations of the UK. For England and Wales ages are defined on the 31 August, for Northern Ireland on the 1 July and for Scotland on the 28 February the following year. Defining ages in this way matches the assignment of children to school cohorts. For applicants outside of the UK the cohort cut off for England and Wales has been used.

Applicant

A person who has made an application in the UCAS system during the cycle reported (including applications for deferred entry). Records of prior acceptance (RPAs) are excluded.

Application

An application to a course at a provider made by an applicant in the UCAS main scheme. Applicants may make up to five main scheme applications.

Country of provider

An applicant may be counted once for each provider country they have applied to in the main scheme. If an applicant has applied to providers in multiple countries then the applicant is counted once within each country of provider applied to.

Domicile

Declared area of permanent residence. The Channel Islands and the Isle of Man have been assigned as 'Not EU'.

Ethnic group

High level grouping of ethnic origin as declared by the applicant: 'Asian', 'Black', 'Mixed', 'White', 'Other', 'Unknown'.

First time applicant

An applicant that did not apply to the UCAS scheme in the previous cycle.

Main scheme

The main UCAS application scheme through which up to five providers/courses can be applied to. This opens in September and closes to new applications on 30 June the following year.

Reapplicant

An applicant that applied to the UCAS scheme in the previous cycle.

Sex

As declared by the applicant.

SIMD 2016

Scottish Index of Multiple Deprivation identifies small area concentrations of multiple deprivation across all of Scotland, providing a relative measure of deprivation among small areas (data zones). In this report, the SIMD 2016 has been used to group areas in each year in the times series.

POLAR3

Developed by HEFCE and classifies small areas across the UK into five groups, according to their level of young participation in HE. Each of these groups represents around 20 per cent of young people, and is ranked from quintile 1 (areas with the lowest young participation rates, considered as the most disadvantaged) to quintile 5 (highest young participation rates, considered most advantaged).

POLAR4

Developed by HEFCE and classifies small areas across the UK into five groups, according to their level of young participation in HE. Each of these groups represents around 20 per cent of young people, and is ranked from quintile 1 (areas with the lowest young participation rates, considered as the most disadvantaged) to quintile 5 (highest young participation rates, considered most advantaged). POLAR4 is the most recent version of the POLAR classification, and is available for the first time in UCAS' reporting since its launch in 2017.

Tariff Group of provider

Providers are grouped as higher, medium or lower tariff based on their average levels of attainment of their accepted applicants (summarised through UCAS Tariff points) in recent cycles. Each group of providers accounted for around a third of all UK 18 year old acceptances in recent cycles.

Subject group

The JACS3 classification used to classify courses into subject groups.