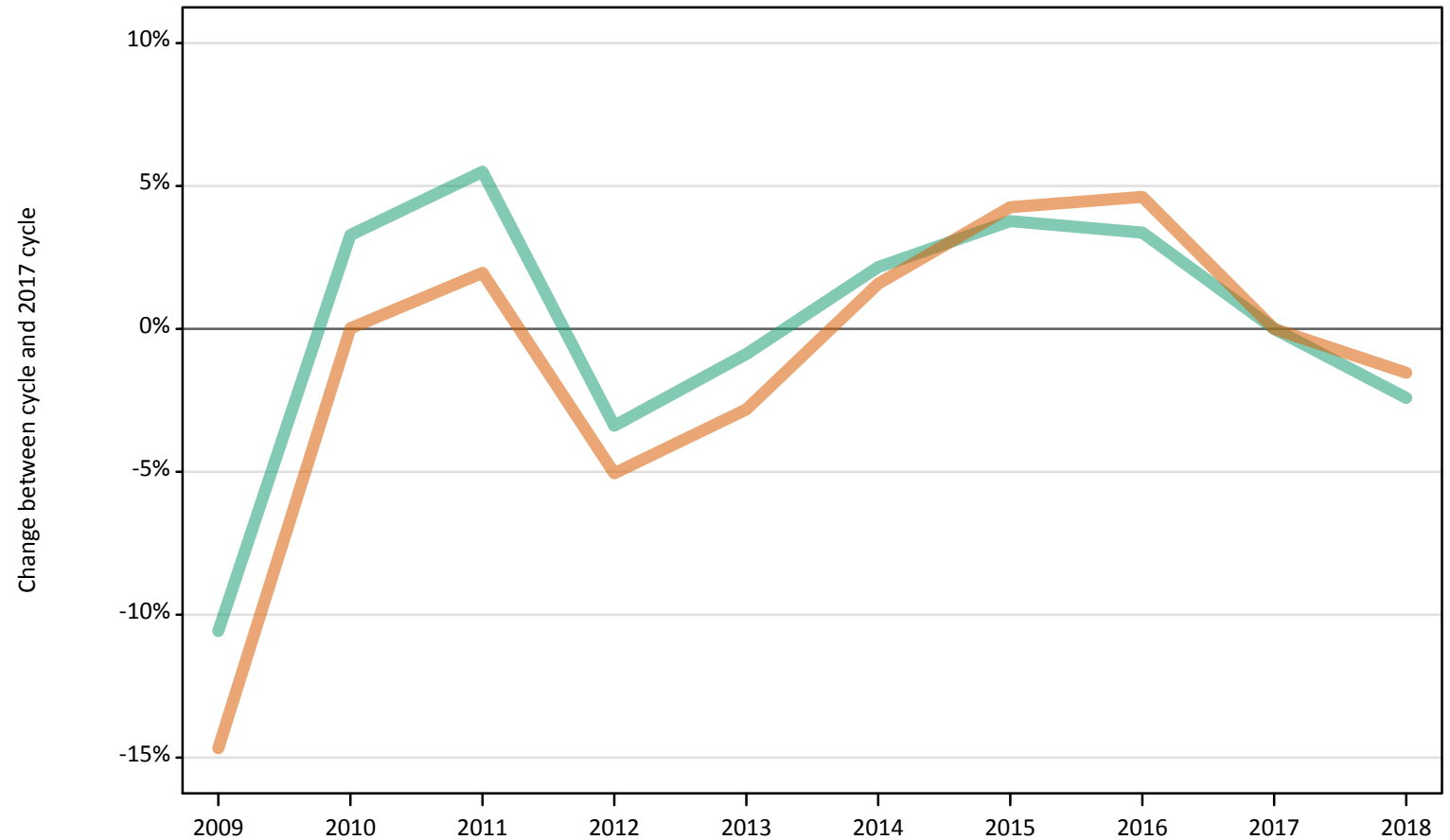


March Deadline Analysis: Sex and age

Applicants by sex and age at the 24 March deadline

F.2.1 Applicants by sex: All domiciles Difference between cycle and 2017 cycle

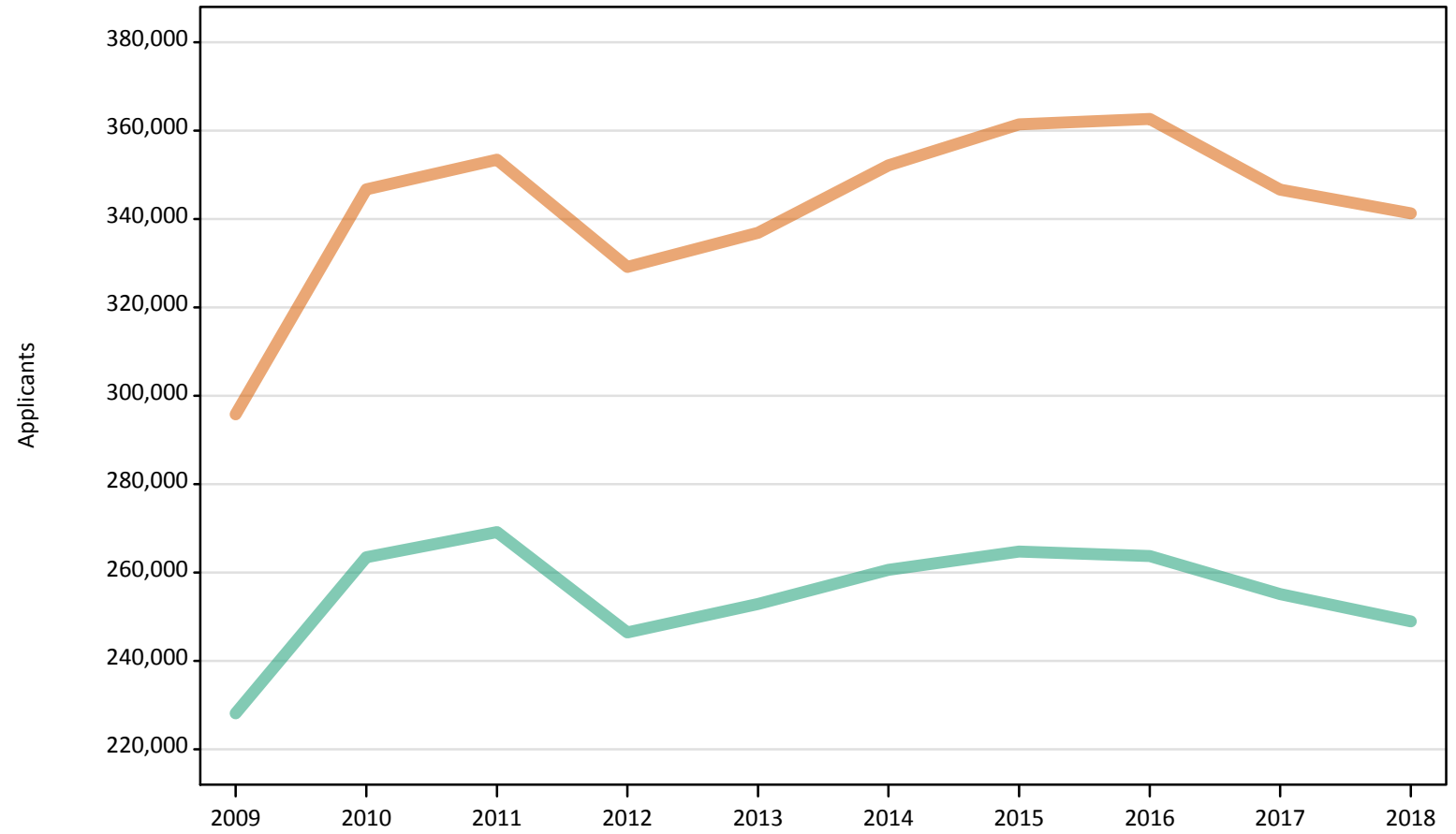
Men
Women



Note: The percentage change is not plotted in the above chart for groups with fewer than 500 applicants in any one cycle.

F.2.2 Applicants by sex: All domiciles

Men
Women



F.2.3 Applicants by age and sex: All domiciles

Age group and sex		2009	2010	2011	2012	2013	2014	2015	2016	2017	2018
Under 18	Women	4,300	4,780	4,790	4,870	5,120	5,850	6,000	6,320	6,590	7,360
	Men	3,090	3,260	3,420	3,640	3,960	4,290	4,600	4,720	4,900	5,490
18	Women	151,270	162,420	163,120	159,800	162,050	167,340	176,690	178,860	179,000	178,950
	Men	119,930	129,710	129,880	125,100	127,160	131,380	135,260	136,630	137,760	136,970
19	Women	55,130	65,420	69,740	60,200	65,510	68,360	69,310	70,080	65,720	64,190
	Men	47,040	55,350	58,960	50,220	54,870	55,980	57,010	57,040	53,740	50,740
20-24	Women	50,700	64,890	66,580	60,130	61,100	64,810	63,560	61,050	55,960	54,230
	Men	41,450	51,370	53,330	46,930	47,120	48,450	47,310	45,260	41,960	39,830
25-29	Women	14,020	19,780	19,850	17,850	17,980	18,940	19,370	19,130	16,090	14,720
	Men	8,140	11,230	10,930	9,390	9,410	9,600	9,570	9,190	8,050	7,640
30-34	Women	7,660	11,020	11,370	10,440	10,230	10,580	10,430	10,330	8,910	8,270
	Men	3,530	5,220	5,410	4,650	4,350	4,440	4,300	4,150	3,380	3,250
35 and over	Women	12,730	18,430	17,950	15,860	14,880	16,220	16,050	16,860	14,370	13,590
	Men	4,990	7,360	7,240	6,550	6,000	6,520	6,700	6,730	5,340	5,050
All ages	Women	295,810	346,730	353,410	329,140	336,870	352,100	361,400	362,630	346,640	341,310
	Men	228,180	263,500	269,170	246,480	252,870	260,650	264,760	263,730	255,130	248,960

F.2.4 Applicants by age and sex: All domiciles

Difference between cycle and 2017 cycle

Age group and sex		2009	2010	2011	2012	2013	2014	2015	2016	2017	2018
Under 18	Women	-35%	-28%	-27%	-26%	-22%	-11%	-9%	-4%	0%	12%
	Men	-37%	-33%	-30%	-26%	-19%	-13%	-6%	-4%	0%	12%
18	Women	-15%	-9%	-9%	-11%	-9%	-7%	-1%	-0%	0%	-0%
	Men	-13%	-6%	-6%	-9%	-8%	-5%	-2%	-1%	0%	-1%
19	Women	-16%	-0%	6%	-8%	-0%	4%	5%	7%	0%	-2%
	Men	-12%	3%	10%	-7%	2%	4%	6%	6%	0%	-6%
20-24	Women	-9%	16%	19%	7%	9%	16%	14%	9%	0%	-3%
	Men	-1%	22%	27%	12%	12%	15%	13%	8%	0%	-5%
25-29	Women	-13%	23%	23%	11%	12%	18%	20%	19%	0%	-9%
	Men	1%	40%	36%	17%	17%	19%	19%	14%	0%	-5%
30-34	Women	-14%	24%	28%	17%	15%	19%	17%	16%	0%	-7%
	Men	4%	54%	60%	38%	29%	31%	27%	23%	0%	-4%
35 and over	Women	-11%	28%	25%	10%	4%	13%	12%	17%	0%	-5%
	Men	-6%	38%	36%	23%	12%	22%	26%	26%	0%	-5%
All ages	Women	-15%	0%	2%	-5%	-3%	2%	4%	5%	0%	-2%
	Men	-11%	3%	6%	-3%	-1%	2%	4%	3%	0%	-2%

Note: The percentage change is not recorded in the above table for groups with fewer than 10 applicants in that cycle or in the 2017 cycle.

F.2.5 Applicants by sex: UK
Difference between cycle and 2017 cycle

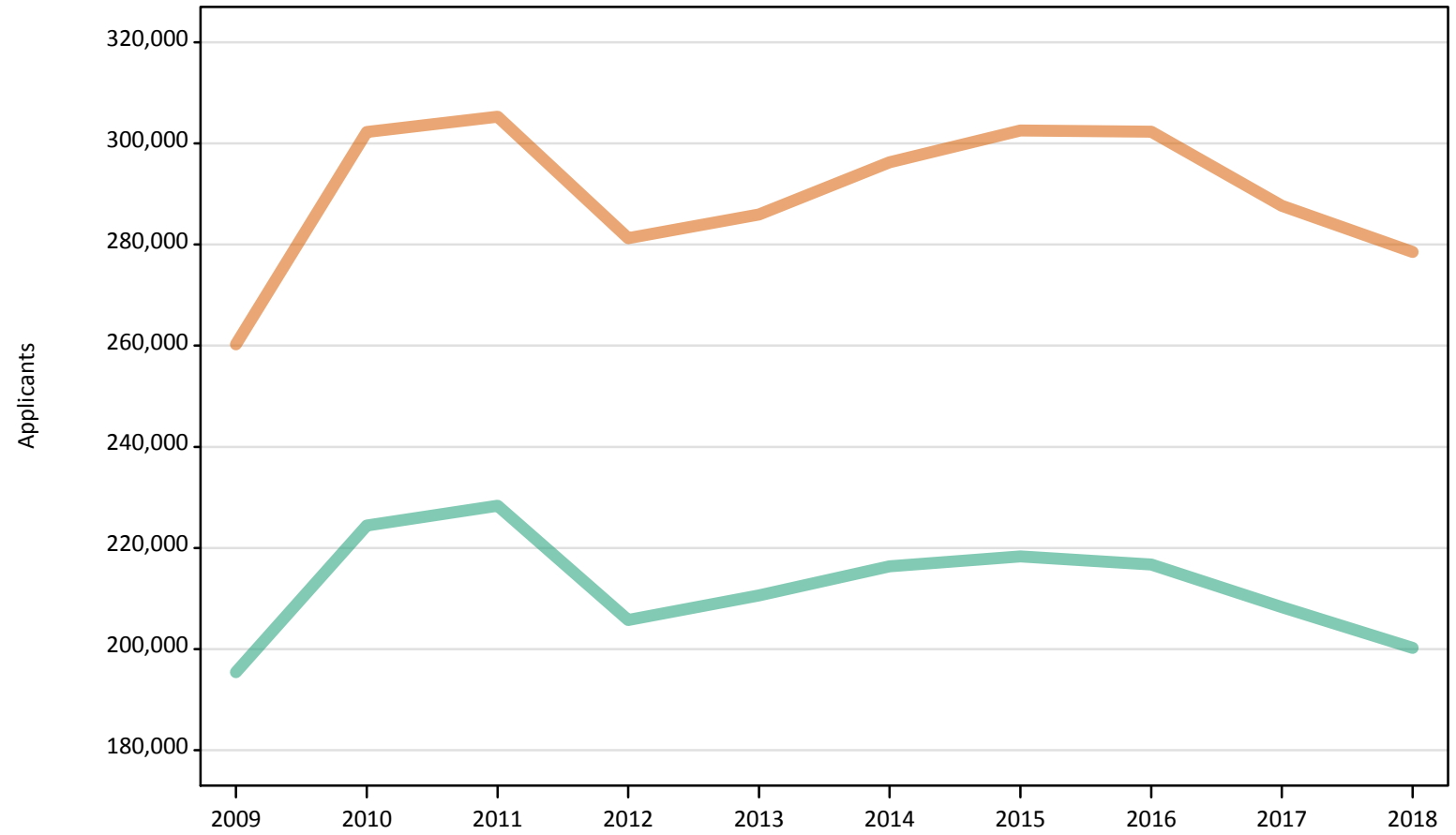
Men
Women



Note: The percentage change is not plotted in the above chart for groups with fewer than 500 applicants in any one cycle.

F.2.6 Applicants by sex: UK

Men
Women



F.2.7 Applicants by age and sex: UK

Age group and sex		2009	2010	2011	2012	2013	2014	2015	2016	2017	2018
Under 18	Women	1,360	1,450	1,270	1,020	900	940	980	940	920	910
	Men	960	900	850	730	680	650	720	790	730	720
18	Women	139,400	147,990	147,270	143,230	143,700	147,350	154,800	155,770	155,700	153,200
	Men	110,380	118,370	117,860	112,060	113,170	116,220	118,600	119,430	119,890	117,420
19	Women	45,530	53,190	56,050	46,580	51,220	52,640	52,980	53,360	49,530	47,370
	Men	38,310	44,940	47,550	39,190	43,480	44,170	44,630	44,220	41,100	38,000
20-24	Women	41,470	52,900	53,970	48,390	49,040	51,710	50,290	48,040	44,150	42,470
	Men	31,510	39,350	41,150	35,490	35,670	36,800	35,880	34,250	31,620	29,940
25-29	Women	12,780	18,110	18,210	16,480	16,610	17,540	17,770	17,670	14,730	13,420
	Men	6,570	9,350	9,200	7,910	8,010	8,290	8,200	7,850	6,850	6,470
30-34	Women	7,280	10,550	10,900	10,010	9,850	10,200	10,030	9,980	8,550	7,900
	Men	3,070	4,610	4,870	4,190	3,910	4,020	3,890	3,770	3,040	2,900
35 and over	Women	12,470	18,070	17,640	15,540	14,610	15,900	15,700	16,530	14,110	13,290
	Men	4,650	6,940	6,910	6,200	5,680	6,220	6,420	6,450	5,080	4,800
All ages	Women	260,280	302,260	305,290	281,260	285,940	296,280	302,540	302,280	287,690	278,550
	Men	195,450	224,460	228,390	205,760	210,610	216,380	218,330	216,750	208,320	200,240

F.2.8 Applicants by age and sex: UK
Difference between cycle and 2017 cycle

Age group and sex		2009	2010	2011	2012	2013	2014	2015	2016	2017	2018
Under 18	Women	48%	57%	37%	10%	-3%	2%	6%	2%	0%	-1%
	Men	32%	23%	17%	-0%	-7%	-10%	-1%	8%	0%	-1%
18	Women	-10%	-5%	-5%	-8%	-8%	-5%	-1%	0%	0%	-2%
	Men	-8%	-1%	-2%	-7%	-6%	-3%	-1%	-0%	0%	-2%
19	Women	-8%	7%	13%	-6%	3%	6%	7%	8%	0%	-4%
	Men	-7%	9%	16%	-5%	6%	7%	9%	8%	0%	-8%
20-24	Women	-6%	20%	22%	10%	11%	17%	14%	9%	0%	-4%
	Men	-0%	24%	30%	12%	13%	16%	13%	8%	0%	-5%
25-29	Women	-13%	23%	24%	12%	13%	19%	21%	20%	0%	-9%
	Men	-4%	36%	34%	15%	17%	21%	20%	15%	0%	-6%
30-34	Women	-15%	23%	27%	17%	15%	19%	17%	17%	0%	-8%
	Men	1%	52%	60%	38%	29%	32%	28%	24%	0%	-5%
35 and over	Women	-12%	28%	25%	10%	4%	13%	11%	17%	0%	-6%
	Men	-8%	37%	36%	22%	12%	22%	26%	27%	0%	-6%
All ages	Women	-10%	5%	6%	-2%	-1%	3%	5%	5%	0%	-3%
	Men	-6%	8%	10%	-1%	1%	4%	5%	4%	0%	-4%

Note: The percentage change is not recorded in the above table for groups with fewer than 10 applicants in that cycle or in the 2017 cycle.

F.2.9 Applicants by sex: England
Difference between cycle and 2017 cycle

Men
Women



Note: The percentage change is not plotted in the above chart for groups with fewer than 500 applicants in any one cycle.

F.2.10 Applicants by sex: England

Men
Women



F.2.11 Applicants by age and sex: England

Age group and sex		2009	2010	2011	2012	2013	2014	2015	2016	2017	2018
Under 18	Women	750	800	670	490	460	500	490	460	460	430
	Men	540	510	460	390	380	380	450	460	380	380
18	Women	116,220	123,120	122,990	118,960	119,910	123,130	129,640	130,650	131,200	129,590
	Men	92,500	99,670	99,390	94,270	95,270	98,240	100,520	101,690	102,630	100,730
19	Women	40,340	46,690	48,880	39,650	44,240	45,570	45,860	45,680	42,190	40,150
	Men	34,140	39,970	42,090	33,920	38,170	38,760	39,100	38,420	35,720	32,770
20-24	Women	34,860	43,990	44,250	38,990	39,200	41,440	39,110	36,830	33,150	31,680
	Men	26,390	32,900	34,140	28,370	27,990	29,260	28,020	26,350	23,980	22,470
25-29	Women	10,840	15,110	15,060	13,480	13,470	14,130	13,580	13,420	10,590	9,400
	Men	5,260	7,520	7,270	6,190	6,210	6,430	6,010	5,640	4,830	4,380
30-34	Women	6,300	9,040	9,220	8,470	8,230	8,440	7,910	7,810	6,300	5,660
	Men	2,590	3,840	4,040	3,350	3,100	3,190	2,950	2,800	2,130	1,950
35 and over	Women	10,920	15,550	15,200	13,320	12,440	13,560	12,870	13,490	10,970	9,790
	Men	3,960	5,920	5,930	5,270	4,750	5,230	5,210	5,250	3,980	3,620
All ages	Women	220,230	254,280	256,260	233,360	237,960	246,760	249,460	248,340	234,850	226,680
	Men	165,380	190,330	193,320	171,750	175,860	181,490	182,240	180,600	173,650	166,310

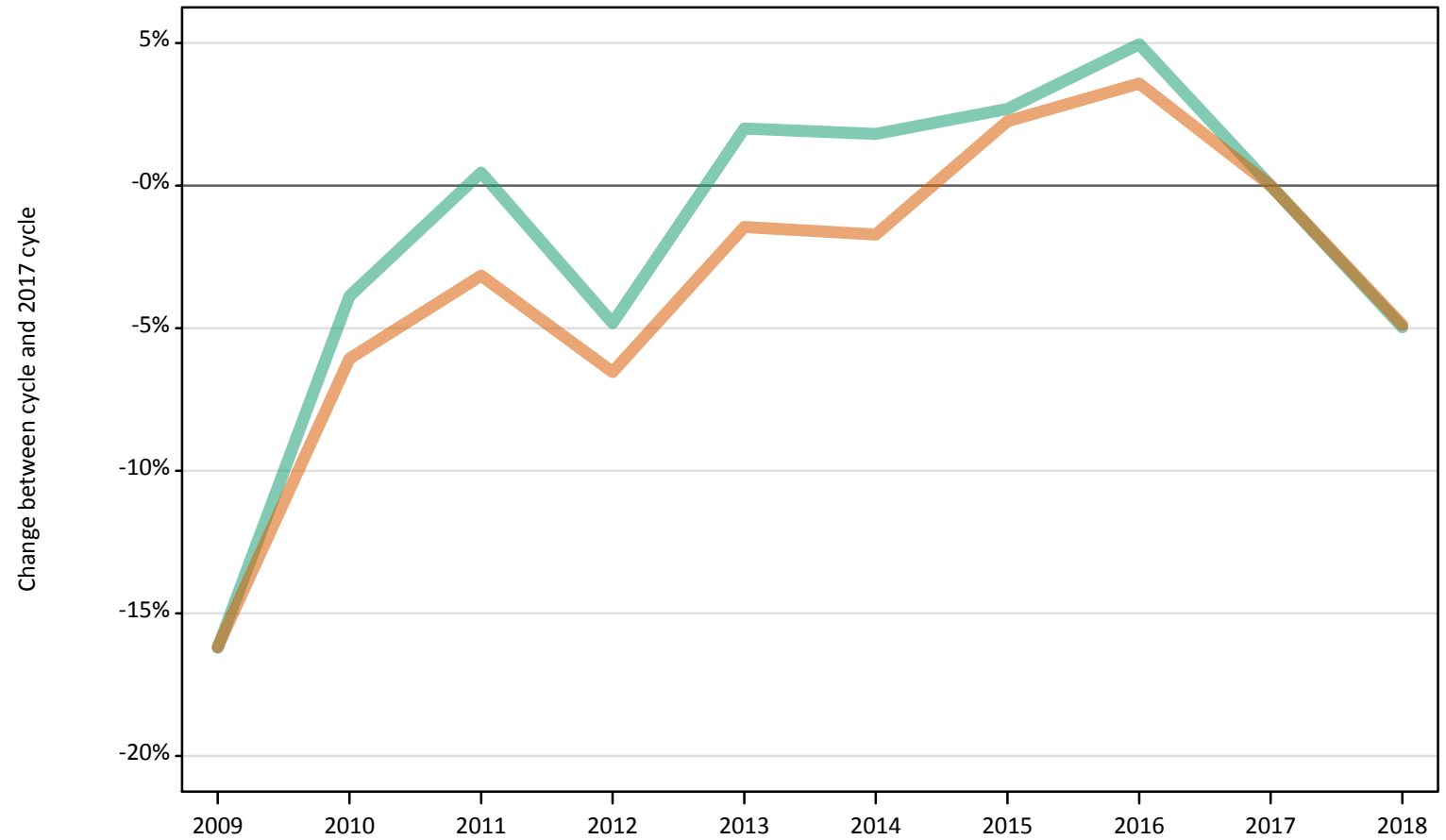
F.2.12 Applicants by age and sex: England
Difference between cycle and 2017 cycle

Age group and sex		2009	2010	2011	2012	2013	2014	2015	2016	2017	2018
Under 18	Women	64%	75%	46%	8%	1%	10%	7%	1%	0%	-5%
	Men	40%	32%	19%	2%	-2%	-1%	16%	20%	0%	1%
18	Women	-11%	-6%	-6%	-9%	-9%	-6%	-1%	-0%	0%	-1%
	Men	-10%	-3%	-3%	-8%	-7%	-4%	-2%	-1%	0%	-2%
19	Women	-4%	11%	16%	-6%	5%	8%	9%	8%	0%	-5%
	Men	-4%	12%	18%	-5%	7%	8%	9%	8%	0%	-8%
20-24	Women	5%	33%	33%	18%	18%	25%	18%	11%	0%	-4%
	Men	10%	37%	42%	18%	17%	22%	17%	10%	0%	-6%
25-29	Women	2%	43%	42%	27%	27%	33%	28%	27%	0%	-11%
	Men	9%	56%	50%	28%	29%	33%	24%	17%	0%	-9%
30-34	Women	-0%	43%	46%	34%	31%	34%	26%	24%	0%	-10%
	Men	22%	80%	90%	57%	46%	50%	39%	31%	0%	-8%
35 and over	Women	-0%	42%	39%	21%	13%	24%	17%	23%	0%	-11%
	Men	-1%	49%	49%	32%	19%	31%	31%	32%	0%	-9%
All ages	Women	-6%	8%	9%	-1%	1%	5%	6%	6%	0%	-3%
	Men	-5%	10%	11%	-1%	1%	5%	5%	4%	0%	-4%

Note: The percentage change is not recorded in the above table for groups with fewer than 10 applicants in that cycle or in the 2017 cycle.

F.2.13 Applicants by sex: Northern Ireland
Difference between cycle and 2017 cycle

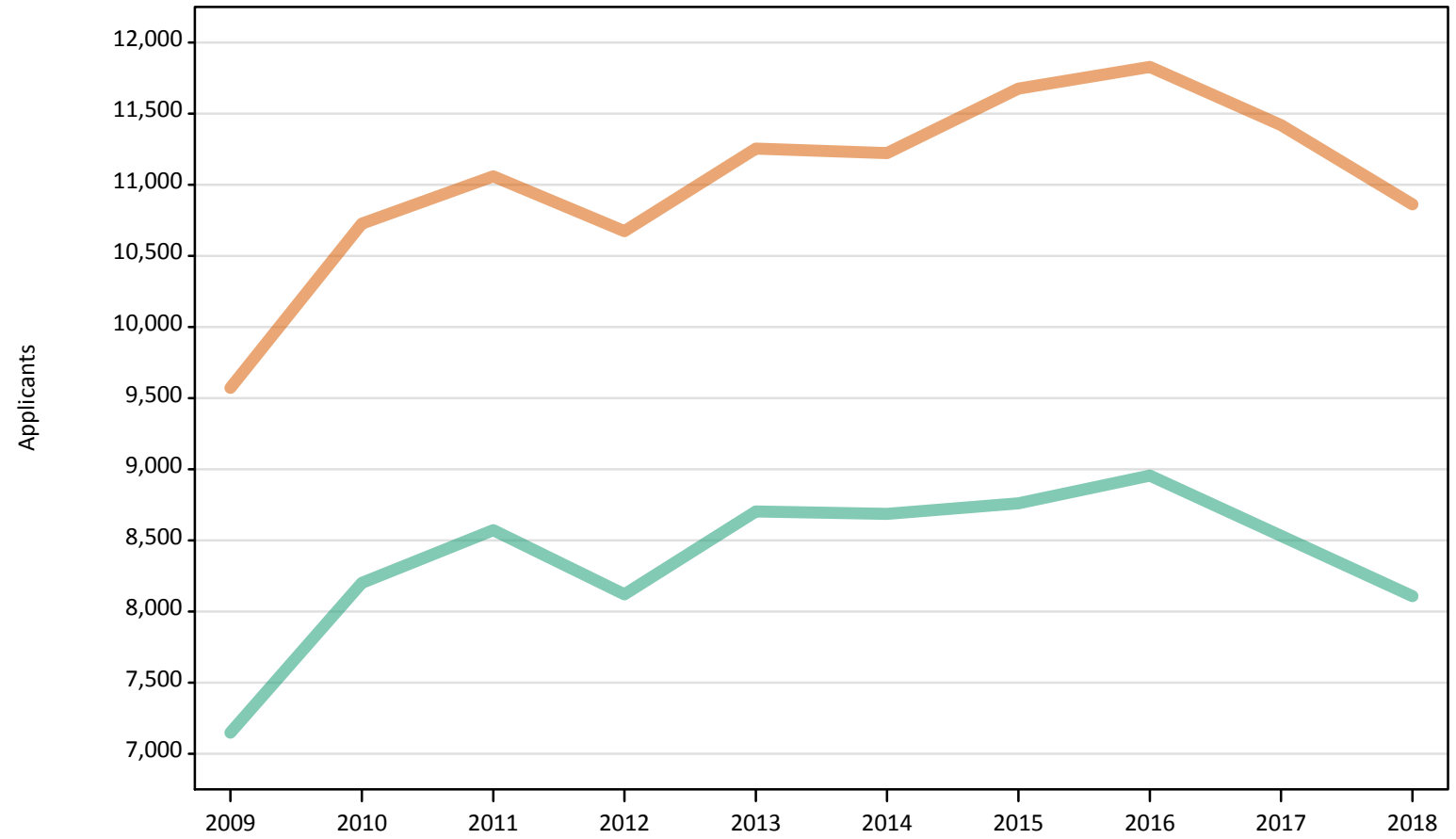
Men
Women



Note: The percentage change is not plotted in the above chart for groups with fewer than 500 applicants in any one cycle.

F.2.14 Applicants by sex: Northern Ireland

Men
Women



F.2.15 Applicants by age and sex: Northern Ireland

Age group and sex		2009	2010	2011	2012	2013	2014	2015	2016	2017	2018
Under 18	Women	30	30	30	30	20	20	20	30	10	20
	Men	30	20	20	20	20	10	10	10	10	10
18	Women	6,600	6,840	6,740	6,700	6,530	6,400	6,830	6,700	6,590	6,230
	Men	4,940	5,220	5,200	4,990	5,160	5,080	5,130	5,080	4,940	4,810
19	Women	1,100	1,360	1,670	1,480	1,650	1,650	1,660	1,960	1,870	1,720
	Men	840	1,130	1,360	1,190	1,300	1,380	1,420	1,570	1,420	1,350
20-24	Women	1,220	1,610	1,740	1,660	1,950	2,030	2,030	1,990	1,880	1,880
	Men	990	1,350	1,480	1,460	1,710	1,720	1,660	1,730	1,750	1,540
25-29	Women	290	440	460	410	550	570	560	550	480	470
	Men	210	280	320	250	290	270	290	320	220	220
30-34	Women	150	170	180	170	260	260	270	280	270	240
	Men	60	100	100	100	110	110	130	120	100	80
35 and over	Women	190	280	260	210	300	300	300	320	310	310
	Men	80	110	100	110	120	120	120	130	90	90
All ages	Women	9,570	10,730	11,060	10,670	11,250	11,220	11,680	11,830	11,420	10,860
	Men	7,150	8,200	8,570	8,120	8,700	8,690	8,760	8,960	8,530	8,110

F.2.16 Applicants by age and sex: Northern Ireland

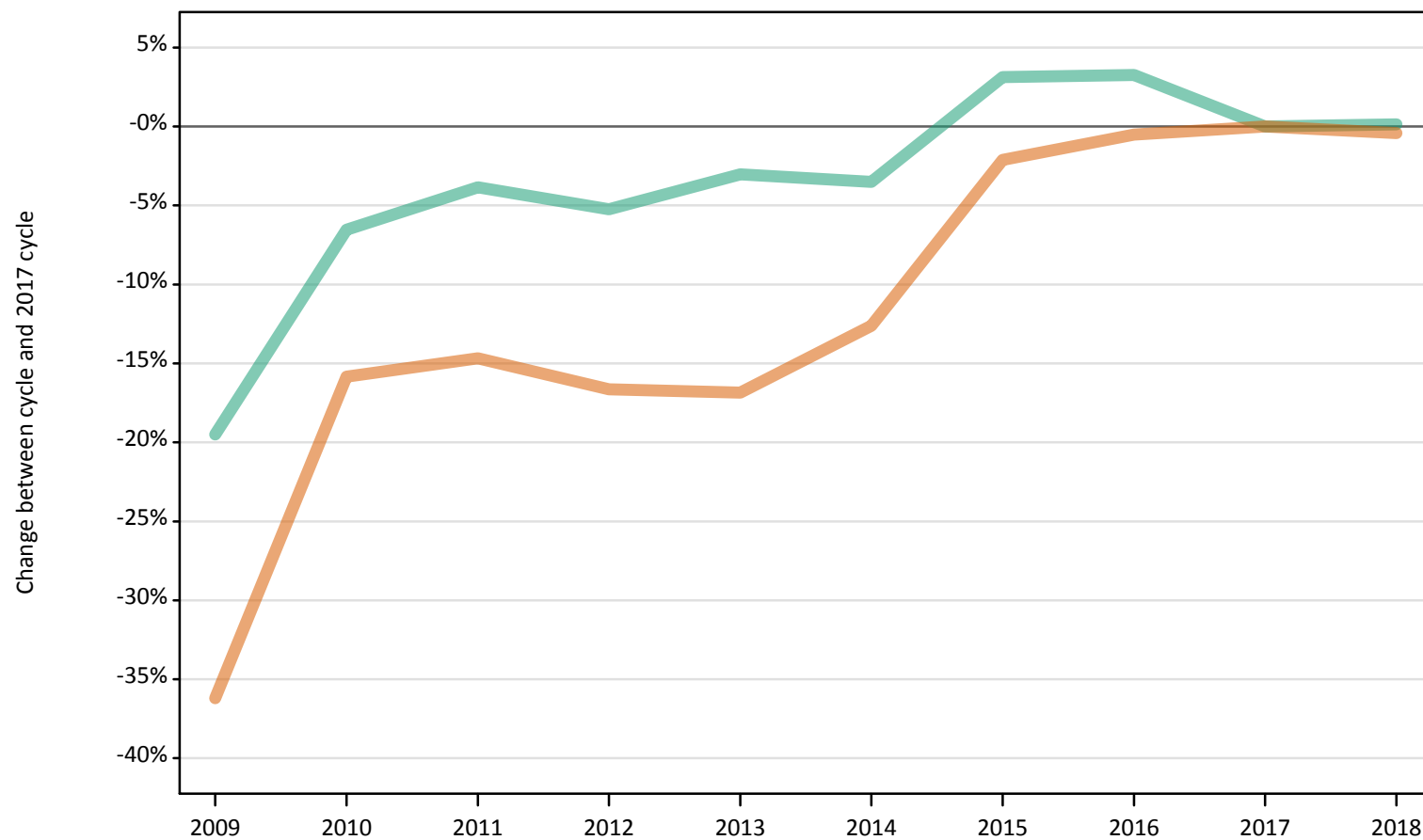
Difference between cycle and 2017 cycle

Age group and sex		2009	2010	2011	2012	2013	2014	2015	2016	2017	2018
Under 18	Women	150%	175%	108%	183%	50%	42%	83%	117%	0%	50%
	Men	115%	69%	69%	31%	31%	-15%	-8%	8%	0%	-15%
18	Women	0%	4%	2%	2%	-1%	-3%	4%	2%	0%	-5%
	Men	0%	6%	5%	1%	4%	3%	4%	3%	0%	-3%
19	Women	-41%	-27%	-11%	-21%	-12%	-12%	-11%	4%	0%	-8%
	Men	-41%	-21%	-4%	-16%	-8%	-3%	1%	11%	0%	-4%
20-24	Women	-35%	-14%	-8%	-12%	3%	7%	8%	6%	0%	-0%
	Men	-44%	-23%	-16%	-17%	-2%	-2%	-5%	-1%	0%	-12%
25-29	Women	-39%	-7%	-2%	-13%	16%	20%	18%	17%	0%	-2%
	Men	-3%	25%	43%	15%	34%	23%	32%	45%	0%	-2%
30-34	Women	-46%	-38%	-36%	-36%	-5%	-5%	0%	3%	0%	-13%
	Men	-42%	-3%	-4%	4%	5%	7%	31%	21%	0%	-16%
35 and over	Women	-41%	-12%	-18%	-33%	-3%	-4%	-4%	2%	0%	-1%
	Men	-11%	16%	11%	16%	22%	22%	27%	34%	0%	-1%
All ages	Women	-16%	-6%	-3%	-7%	-1%	-2%	2%	4%	0%	-5%
	Men	-16%	-4%	0%	-5%	2%	2%	3%	5%	0%	-5%

Note: The percentage change is not recorded in the above table for groups with fewer than 10 applicants in that cycle or in the 2017 cycle.

F.2.17 Applicants by sex: Scotland
Difference between cycle and 2017 cycle

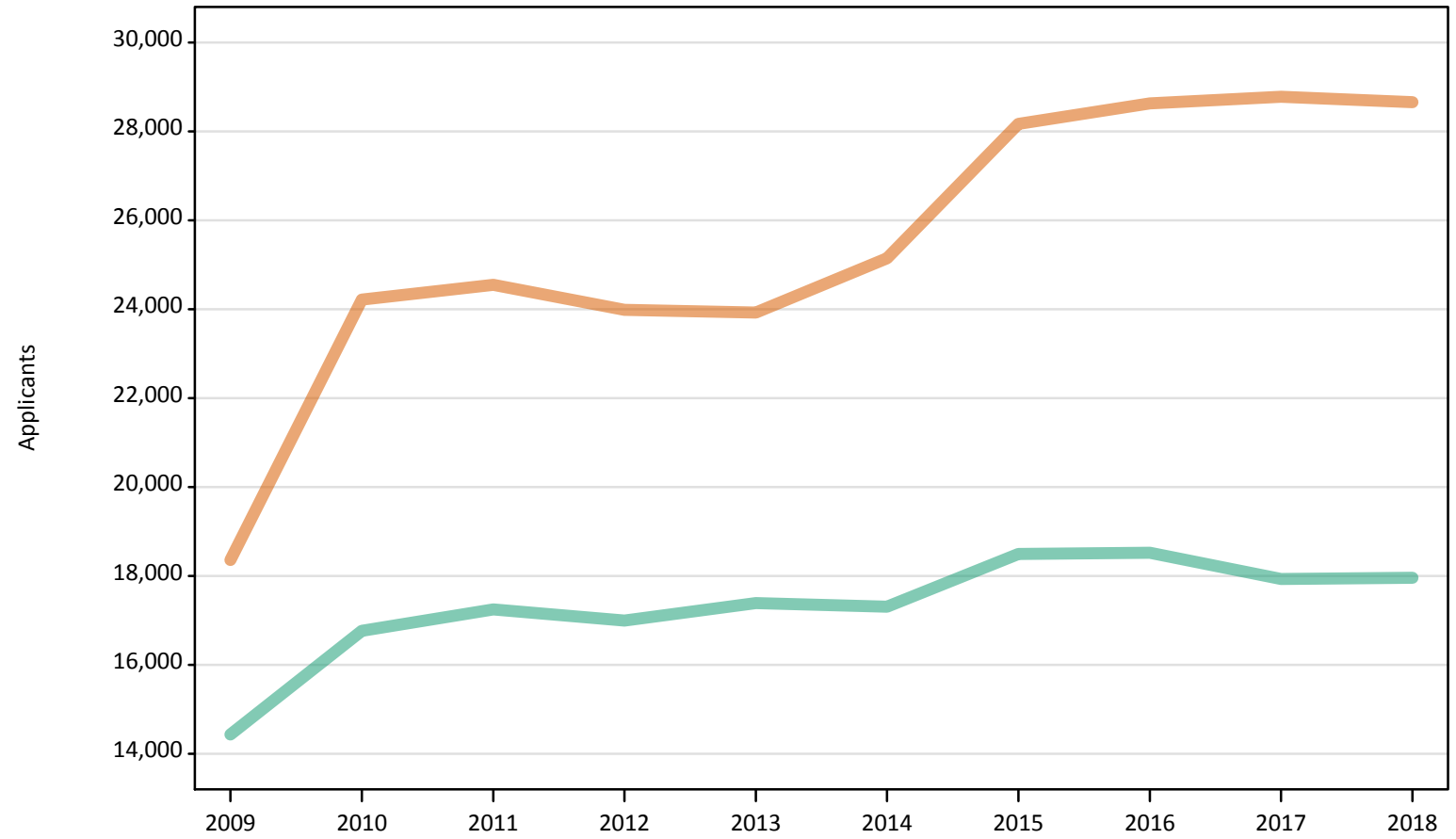
Men
Women



Note: The percentage change is not plotted in the above chart for groups with fewer than 500 applicants in any one cycle.

F.2.18 Applicants by sex: Scotland

Men
Women



F.2.19 Applicants by age and sex: Scotland

Age group and sex		2009	2010	2011	2012	2013	2014	2015	2016	2017	2018
Under 18	Women	560	590	550	480	400	410	450	440	450	440
	Men	380	350	360	310	270	250	260	300	330	320
18	Women	9,860	11,270	10,970	11,000	10,900	11,290	11,430	11,450	11,290	10,910
	Men	7,910	8,390	8,310	8,040	8,090	8,010	8,070	7,790	7,540	7,230
19	Women	2,210	3,000	3,200	3,230	3,120	3,130	3,260	3,430	3,350	3,430
	Men	1,810	2,180	2,280	2,330	2,290	2,260	2,340	2,420	2,380	2,420
20-24	Women	3,490	5,140	5,560	5,360	5,660	5,960	6,950	6,960	7,060	7,020
	Men	2,810	3,540	3,930	4,060	4,450	4,330	4,720	4,820	4,630	4,740
25-29	Women	1,000	1,730	1,790	1,730	1,700	1,920	2,780	2,850	2,860	2,780
	Men	830	1,160	1,200	1,100	1,140	1,220	1,550	1,580	1,540	1,590
30-34	Women	470	910	1,010	870	900	1,000	1,380	1,420	1,520	1,540
	Men	310	500	550	540	550	570	670	710	690	740
35 and over	Women	760	1,570	1,480	1,310	1,260	1,430	1,920	2,080	2,240	2,540
	Men	380	650	620	620	610	660	890	900	830	920
All ages	Women	18,360	24,220	24,550	23,990	23,930	25,150	28,170	28,630	28,780	28,660
	Men	14,440	16,770	17,250	17,000	17,390	17,310	18,500	18,520	17,940	17,960

F.2.20 Applicants by age and sex: Scotland
Difference between cycle and 2017 cycle

Age group and sex		2009	2010	2011	2012	2013	2014	2015	2016	2017	2018
Under 18	Women	26%	33%	23%	8%	-11%	-9%	1%	-0%	0%	-1%
	Men	16%	7%	8%	-6%	-17%	-23%	-21%	-9%	0%	-4%
18	Women	-13%	-0%	-3%	-3%	-4%	-0%	1%	1%	0%	-3%
	Men	5%	11%	10%	7%	7%	6%	7%	3%	0%	-4%
19	Women	-34%	-10%	-4%	-4%	-7%	-7%	-3%	2%	0%	2%
	Men	-24%	-8%	-4%	-2%	-4%	-5%	-2%	2%	0%	2%
20-24	Women	-51%	-27%	-21%	-24%	-20%	-16%	-2%	-1%	0%	-1%
	Men	-39%	-24%	-15%	-12%	-4%	-6%	2%	4%	0%	2%
25-29	Women	-65%	-39%	-38%	-40%	-41%	-33%	-3%	-1%	0%	-3%
	Men	-46%	-25%	-22%	-29%	-26%	-21%	0%	3%	0%	3%
30-34	Women	-69%	-40%	-34%	-43%	-41%	-34%	-10%	-7%	0%	1%
	Men	-55%	-28%	-21%	-22%	-20%	-18%	-3%	3%	0%	7%
35 and over	Women	-66%	-30%	-34%	-42%	-44%	-36%	-14%	-7%	0%	13%
	Men	-54%	-21%	-25%	-25%	-27%	-21%	7%	9%	0%	11%
All ages	Women	-36%	-16%	-15%	-17%	-17%	-13%	-2%	-1%	0%	-0%
	Men	-20%	-7%	-4%	-5%	-3%	-4%	3%	3%	0%	0%

Note: The percentage change is not recorded in the above table for groups with fewer than 10 applicants in that cycle or in the 2017 cycle.

F.2.21 Applicants by sex: Wales
Difference between cycle and 2017 cycle

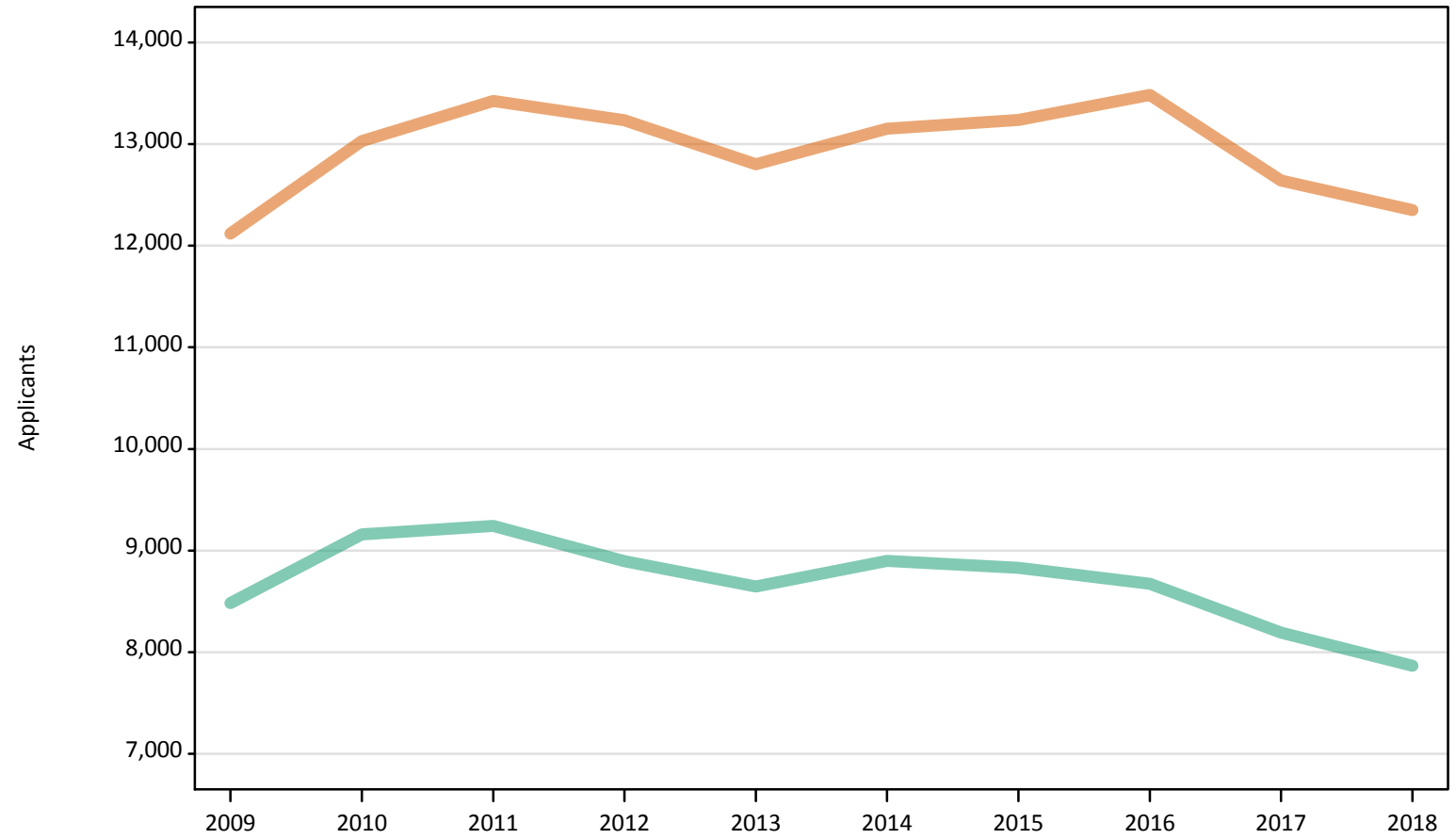
Men
Women



Note: The percentage change is not plotted in the above chart for groups with fewer than 500 applicants in any one cycle.

F.2.22 Applicants by sex: Wales

Men
Women



F.2.23 Applicants by age and sex: Wales

Age group and sex		2009	2010	2011	2012	2013	2014	2015	2016	2017	2018
Under 18	Women	20	30	30	10	30	20	20	10	10	20
	Men	20	20	20	20	10	10	0	20	10	10
18	Women	6,710	6,770	6,570	6,570	6,370	6,520	6,900	6,960	6,610	6,480
	Men	5,030	5,090	4,960	4,770	4,650	4,880	4,880	4,870	4,790	4,650
19	Women	1,880	2,140	2,310	2,210	2,210	2,300	2,200	2,300	2,120	2,070
	Men	1,520	1,660	1,810	1,760	1,720	1,770	1,770	1,810	1,580	1,460
20-24	Women	1,890	2,160	2,420	2,380	2,240	2,290	2,210	2,260	2,050	1,890
	Men	1,320	1,570	1,600	1,600	1,520	1,490	1,480	1,350	1,270	1,190
25-29	Women	650	820	910	860	890	920	850	840	810	780
	Men	270	390	410	360	370	370	360	310	260	280
30-34	Women	360	430	500	490	460	500	460	470	460	470
	Men	110	170	190	190	150	150	130	140	120	120
35 and over	Women	600	670	700	700	610	610	600	640	590	650
	Men	230	260	260	200	210	220	200	180	180	160
All ages	Women	12,120	13,030	13,420	13,230	12,800	13,150	13,240	13,480	12,640	12,350
	Men	8,480	9,160	9,240	8,900	8,650	8,900	8,830	8,670	8,190	7,870

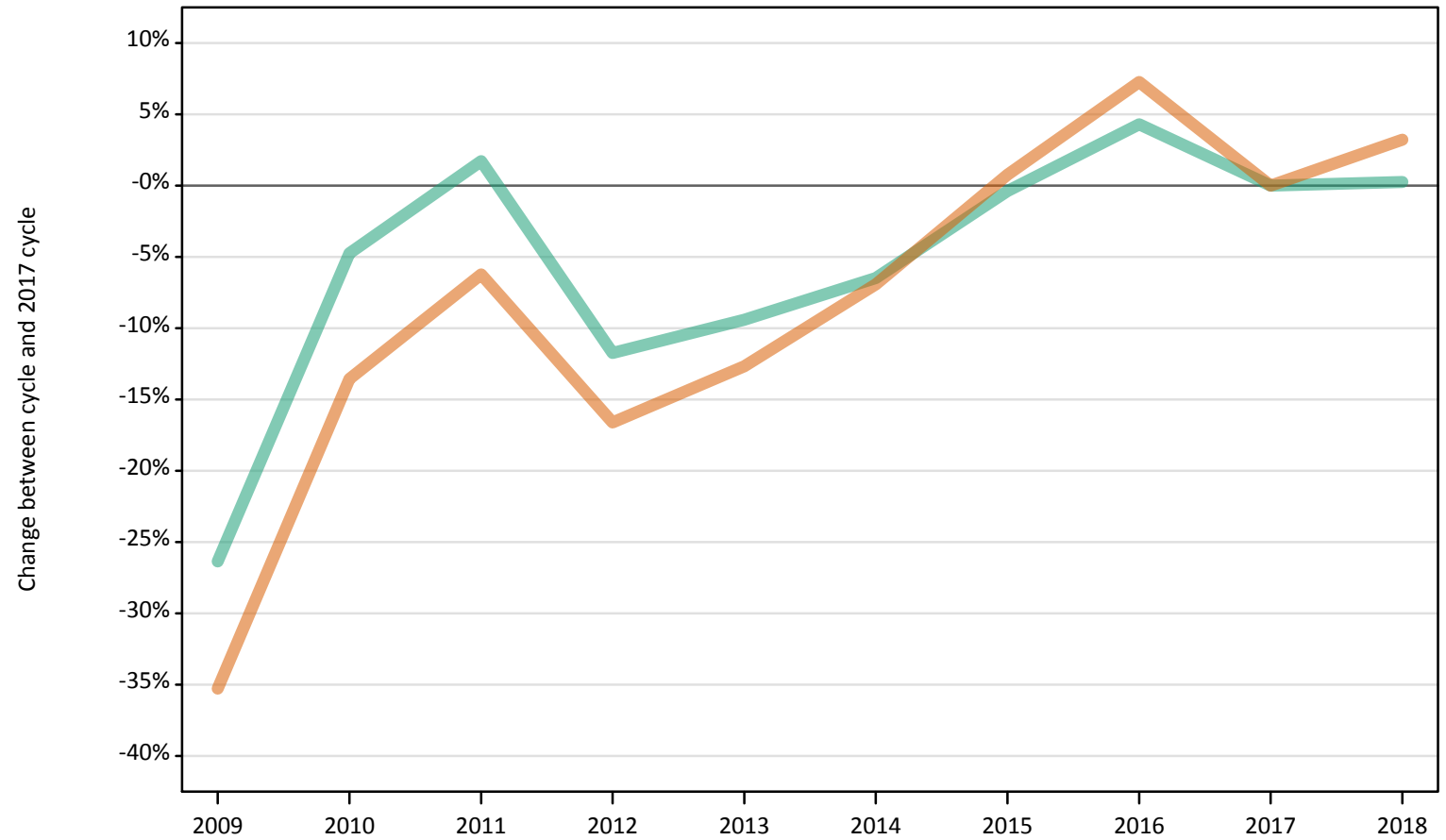
F.2.24 Applicants by age and sex: Wales
Difference between cycle and 2017 cycle

Age group and sex		2009	2010	2011	2012	2013	2014	2015	2016	2017	2018
Under 18	Women	140%	200%	190%	10%	150%	50%	80%	30%	0%	50%
	Men	260%	260%	240%	200%	160%	160%		220%	0%	160%
18	Women	1%	2%	-1%	-1%	-4%	-1%	4%	5%	0%	-2%
	Men	5%	6%	4%	-0%	-3%	2%	2%	2%	0%	-3%
19	Women	-11%	1%	9%	4%	4%	9%	4%	9%	0%	-2%
	Men	-4%	5%	15%	11%	9%	12%	12%	15%	0%	-8%
20-24	Women	-8%	5%	18%	16%	9%	12%	8%	10%	0%	-8%
	Men	4%	24%	27%	27%	20%	18%	17%	7%	0%	-6%
25-29	Women	-20%	2%	12%	7%	10%	14%	6%	5%	0%	-3%
	Men	1%	48%	56%	39%	41%	41%	37%	17%	0%	6%
30-34	Women	-21%	-5%	9%	8%	2%	9%	2%	4%	0%	2%
	Men	-9%	46%	59%	61%	32%	31%	13%	22%	0%	-1%
35 and over	Women	2%	14%	18%	19%	4%	4%	1%	8%	0%	11%
	Men	28%	47%	45%	14%	20%	23%	13%	2%	0%	-9%
All ages	Women	-4%	3%	6%	5%	1%	4%	5%	7%	0%	-2%
	Men	4%	12%	13%	9%	6%	9%	8%	6%	0%	-4%

Note: The percentage change is not recorded in the above table for groups with fewer than 10 applicants in that cycle or in the 2017 cycle.

F.2.25 Applicants by sex: EU (excluding UK)
Difference between cycle and 2017 cycle

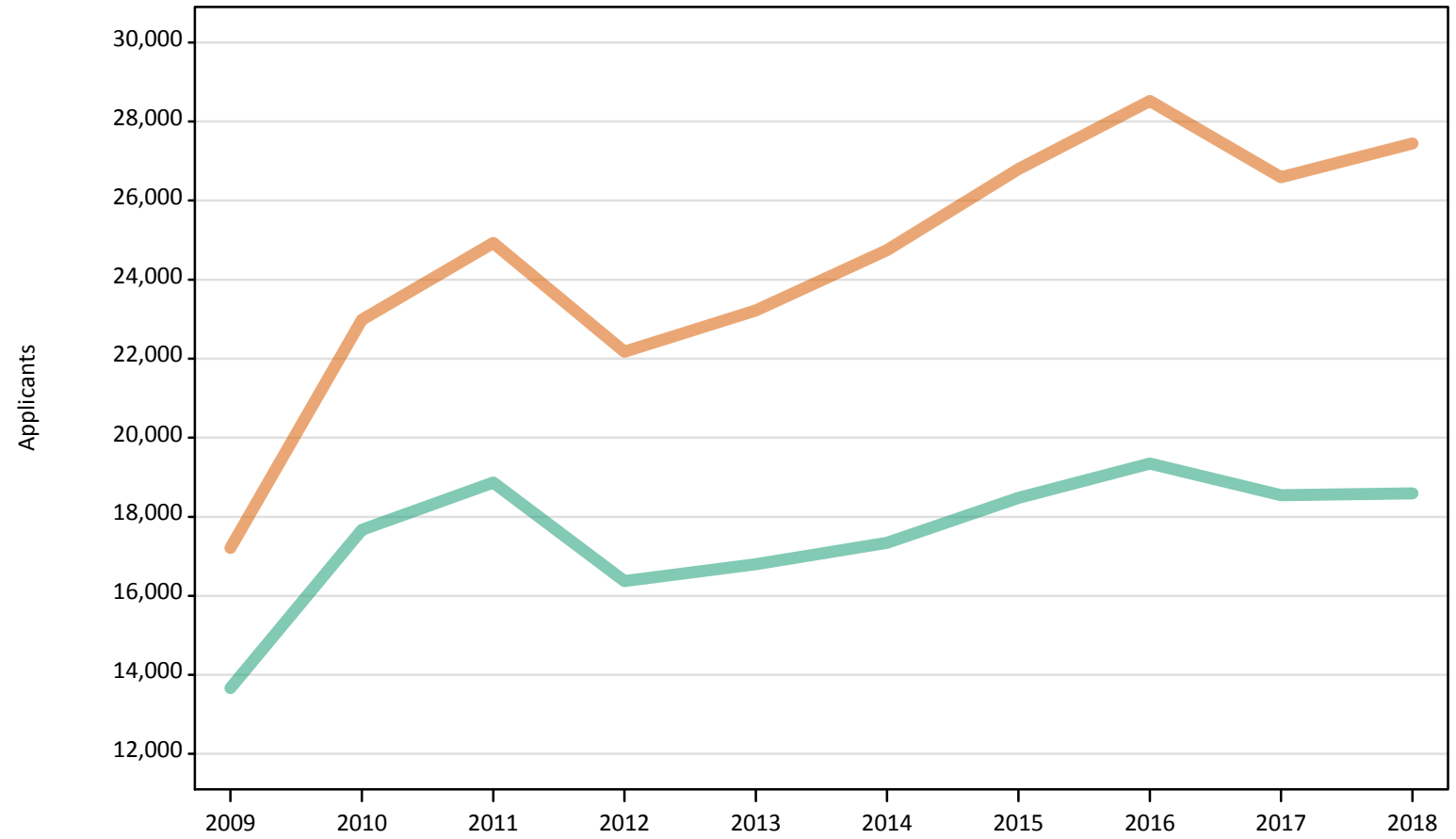
Men
Women



Note: The percentage change is not plotted in the above chart for groups with fewer than 500 applicants in any one cycle.

F.2.26 Applicants by sex: EU (excluding UK)

Men
Women



F.2.27 Applicants by age and sex: EU (excluding UK)

Age group and sex		2009	2010	2011	2012	2013	2014	2015	2016	2017	2018
Under 18	Women	1,620	1,770	1,840	1,810	1,850	2,110	2,320	2,370	2,430	2,540
	Men	900	990	1,110	1,020	1,160	1,230	1,480	1,540	1,530	1,620
18	Women	5,710	7,490	8,050	7,650	8,040	8,620	9,650	10,540	9,980	10,400
	Men	3,950	4,970	5,170	5,180	5,320	5,760	6,390	6,810	6,790	6,950
19	Women	4,570	6,420	7,350	6,590	6,990	7,500	7,990	8,670	8,120	8,390
	Men	3,810	4,910	5,810	4,940	5,150	5,140	5,500	5,890	5,600	5,650
20-24	Women	4,490	6,100	6,510	5,160	5,420	5,570	5,790	5,950	5,270	5,330
	Men	4,250	5,600	5,670	4,400	4,370	4,490	4,330	4,320	4,010	3,690
25-29	Women	600	850	850	640	660	660	720	720	580	550
	Men	540	820	770	540	500	480	560	560	410	460
30-34	Women	140	200	210	180	160	150	160	130	130	130
	Men	120	220	210	170	160	130	130	120	110	130
35 and over	Women	80	150	130	140	120	150	150	150	100	100
	Men	110	150	130	130	140	110	100	110	100	100
All ages	Women	17,210	22,980	24,930	22,170	23,220	24,750	26,790	28,520	26,590	27,440
	Men	13,660	17,670	18,870	16,370	16,800	17,340	18,480	19,350	18,550	18,600

F.2.28 Applicants by age and sex: EU (excluding UK)

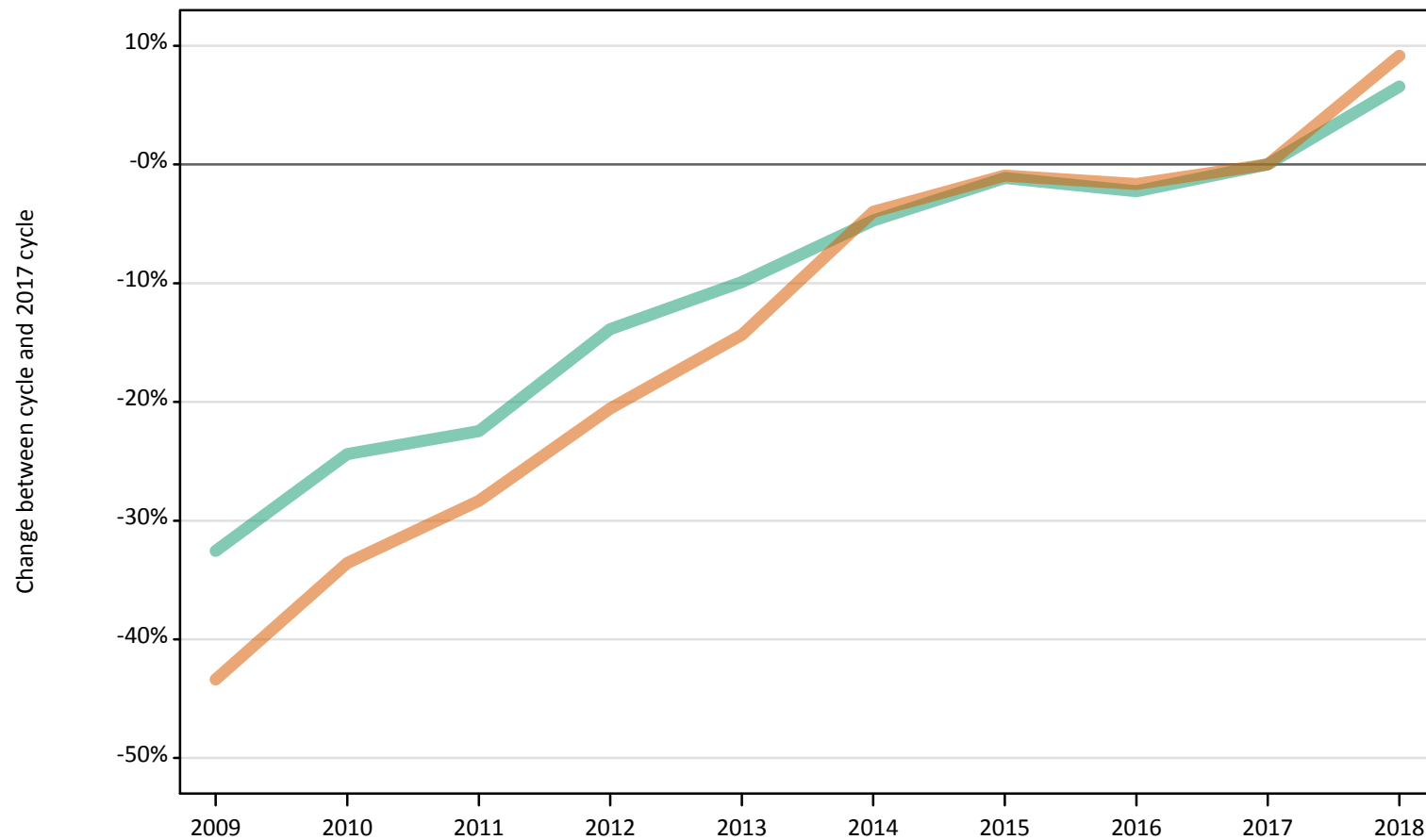
Difference between cycle and 2017 cycle

Age group and sex		2009	2010	2011	2012	2013	2014	2015	2016	2017	2018
Under 18	Women	-33%	-27%	-24%	-25%	-24%	-13%	-4%	-2%	0%	5%
	Men	-41%	-35%	-27%	-33%	-24%	-19%	-3%	1%	0%	6%
18	Women	-43%	-25%	-19%	-23%	-19%	-14%	-3%	6%	0%	4%
	Men	-42%	-27%	-24%	-24%	-22%	-15%	-6%	0%	0%	2%
19	Women	-44%	-21%	-10%	-19%	-14%	-8%	-2%	7%	0%	3%
	Men	-32%	-12%	4%	-12%	-8%	-8%	-2%	5%	0%	1%
20-24	Women	-15%	16%	24%	-2%	3%	6%	10%	13%	0%	1%
	Men	6%	40%	41%	10%	9%	12%	8%	8%	0%	-8%
25-29	Women	3%	48%	47%	11%	14%	14%	25%	25%	0%	-4%
	Men	29%	99%	85%	31%	21%	17%	34%	35%	0%	11%
30-34	Women	9%	58%	62%	39%	25%	16%	27%	0%	0%	1%
	Men	10%	100%	90%	53%	47%	17%	17%	9%	0%	16%
35 and over	Women	-13%	52%	36%	44%	20%	52%	58%	55%	0%	4%
	Men	9%	56%	37%	32%	41%	14%	4%	15%	0%	5%
All ages	Women	-35%	-14%	-6%	-17%	-13%	-7%	1%	7%	0%	3%
	Men	-26%	-5%	2%	-12%	-9%	-6%	-0%	4%	0%	0%

Note: The percentage change is not recorded in the above table for groups with fewer than 10 applicants in that cycle or in the 2017 cycle.

F.2.29 Applicants by sex: Not EU
Difference between cycle and 2017 cycle

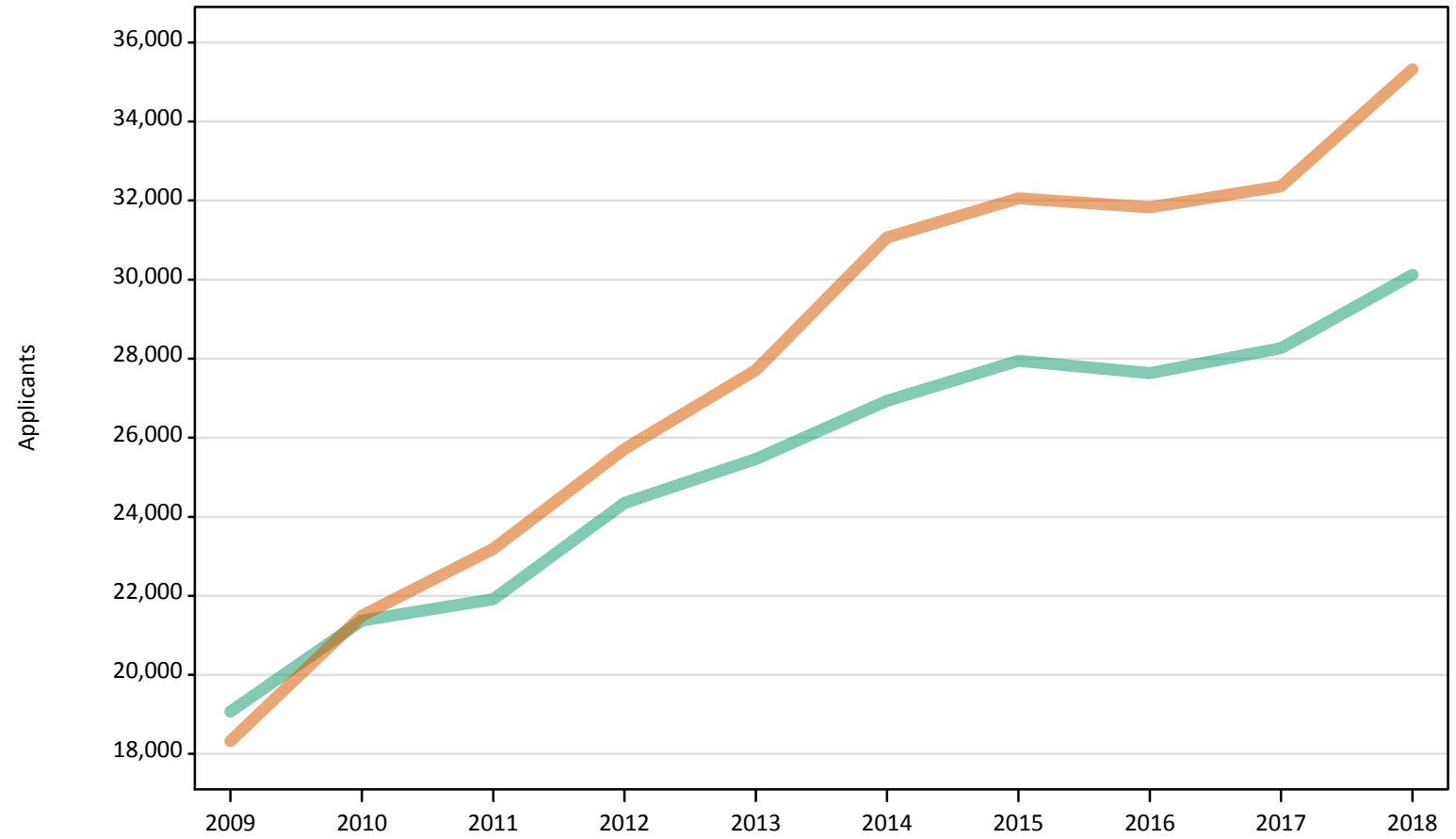
Men
Women



Note: The percentage change is not plotted in the above chart for groups with fewer than 500 applicants in any one cycle.

F.2.30 Applicants by sex: Not EU

Men
Women



F.2.31 Applicants by age and sex: Not EU

Age group and sex		2009	2010	2011	2012	2013	2014	2015	2016	2017	2018
Under 18	Women	1,320	1,550	1,680	2,040	2,370	2,810	2,700	3,010	3,240	3,910
	Men	1,230	1,380	1,460	1,880	2,120	2,400	2,410	2,400	2,650	3,140
18	Women	6,160	6,940	7,810	8,920	10,310	11,370	12,230	12,550	13,330	15,360
	Men	5,600	6,370	6,850	7,850	8,670	9,410	10,280	10,390	11,070	12,600
19	Women	5,030	5,810	6,340	7,020	7,300	8,220	8,340	8,050	8,070	8,430
	Men	4,920	5,500	5,600	6,090	6,240	6,660	6,880	6,930	7,050	7,090
20-24	Women	4,740	5,890	6,110	6,570	6,640	7,530	7,480	7,060	6,540	6,440
	Men	5,700	6,410	6,510	7,050	7,080	7,160	7,100	6,690	6,330	6,210
25-29	Women	640	820	800	730	710	740	880	750	790	750
	Men	1,040	1,060	970	940	900	820	810	790	780	710
30-34	Women	240	270	270	250	220	230	240	220	230	240
	Men	340	390	330	300	280	290	280	260	230	230
35 and over	Women	180	220	190	180	160	170	200	180	170	200
	Men	240	270	200	230	190	190	180	170	160	150
All ages	Women	18,320	21,490	23,190	25,710	27,710	31,070	32,060	31,830	32,360	35,320
	Men	19,070	21,370	21,910	24,350	25,460	26,930	27,950	27,630	28,270	30,120

F.2.32 Applicants by age and sex: Not EU

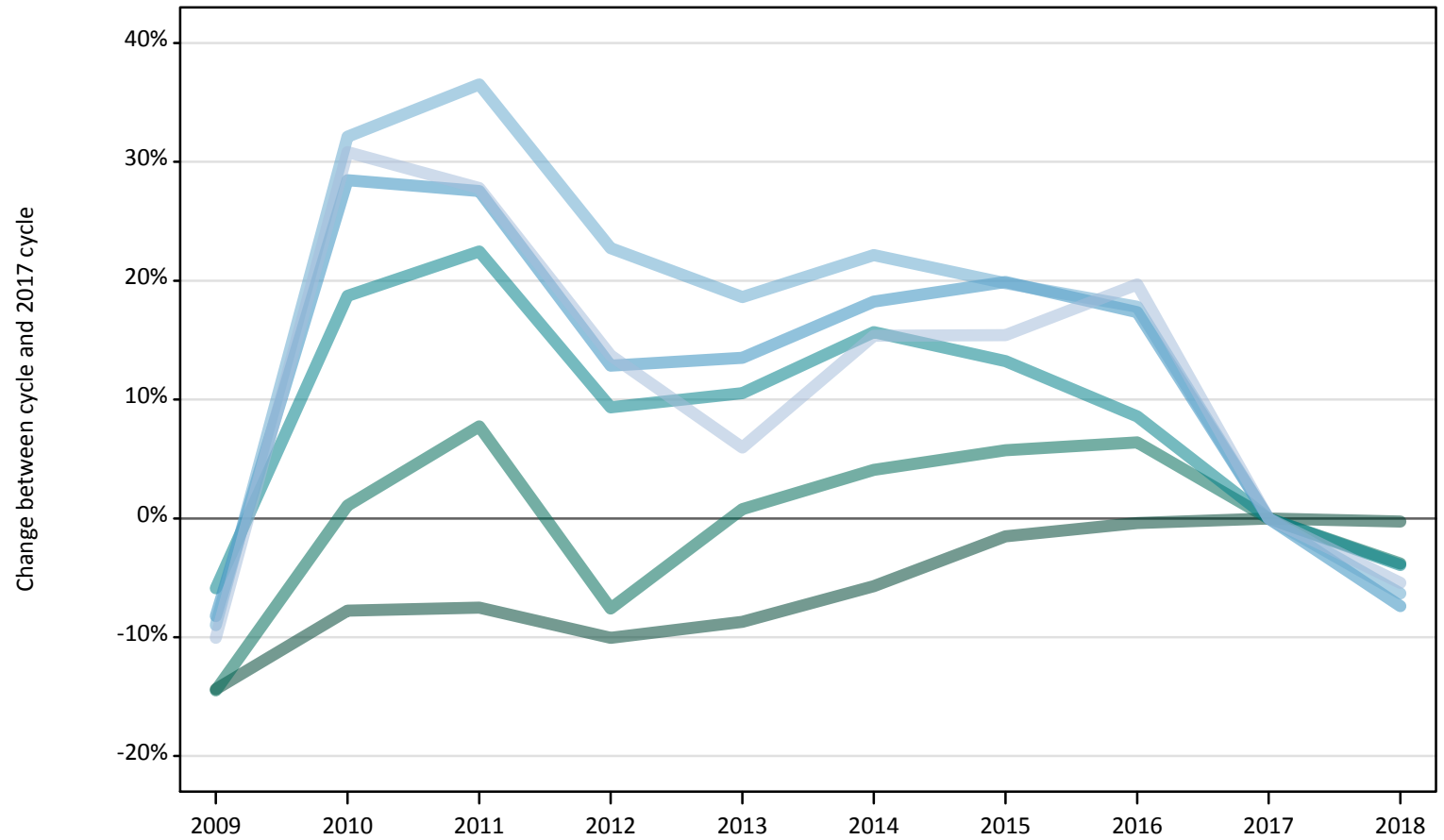
Difference between cycle and 2017 cycle

Age group and sex		2009	2010	2011	2012	2013	2014	2015	2016	2017	2018
Under 18	Women	-59%	-52%	-48%	-37%	-27%	-13%	-17%	-7%	0%	21%
	Men	-53%	-48%	-45%	-29%	-20%	-9%	-9%	-9%	0%	19%
18	Women	-54%	-48%	-41%	-33%	-23%	-15%	-8%	-6%	0%	15%
	Men	-49%	-42%	-38%	-29%	-22%	-15%	-7%	-6%	0%	14%
19	Women	-38%	-28%	-21%	-13%	-9%	2%	3%	-0%	0%	4%
	Men	-30%	-22%	-21%	-14%	-12%	-5%	-2%	-2%	0%	1%
20-24	Women	-28%	-10%	-7%	0%	1%	15%	14%	8%	0%	-2%
	Men	-10%	1%	3%	12%	12%	13%	12%	6%	0%	-2%
25-29	Women	-19%	4%	1%	-7%	-9%	-6%	12%	-5%	0%	-5%
	Men	33%	36%	24%	20%	15%	6%	4%	1%	0%	-9%
30-34	Women	5%	18%	16%	7%	-5%	-2%	3%	-3%	0%	5%
	Men	46%	68%	43%	30%	20%	24%	21%	12%	0%	-3%
35 and over	Women	12%	31%	13%	9%	-6%	2%	22%	9%	0%	21%
	Men	49%	66%	24%	41%	16%	21%	14%	7%	0%	-4%
All ages	Women	-43%	-34%	-28%	-21%	-14%	-4%	-1%	-2%	0%	9%
	Men	-33%	-24%	-22%	-14%	-10%	-5%	-1%	-2%	0%	7%

Note: The percentage change is not recorded in the above table for groups with fewer than 10 applicants in that cycle or in the 2017 cycle.

F.2.33 Applicants by age: All domiciles
Difference between cycle and 2017 cycle

- 18
- 19
- 20-24
- 25-29
- 30-34
- 35 and over



Note: The percentage change is not plotted in the above chart for groups with fewer than 500 applicants in any one cycle.

F.2.34 Applicants by age: All domiciles

Domicile and age group		2009	2010	2011	2012	2013	2014	2015	2016	2017	2018
All domiciles	Under 18	7,400	8,040	8,210	8,500	9,080	10,140	10,600	11,050	11,490	12,840
	18	271,200	292,130	293,000	284,900	289,210	298,720	311,950	315,490	316,760	315,930
	19	102,170	120,770	128,700	110,420	120,380	124,340	126,320	127,110	119,460	114,930
	20-24	92,150	116,260	119,910	107,060	108,220	113,260	110,870	106,310	97,920	94,060
	25-29	22,150	31,010	30,790	27,240	27,400	28,540	28,940	28,330	24,140	22,360
	30-34	11,190	16,240	16,780	15,090	14,580	15,020	14,720	14,480	12,290	11,520
	35 and over	17,730	25,790	25,190	22,410	20,880	22,740	22,750	23,590	19,710	18,640
	All ages	523,990	610,230	622,580	575,620	589,750	612,750	626,150	626,360	601,770	590,270

F.2.35 Applicants by age: All domiciles

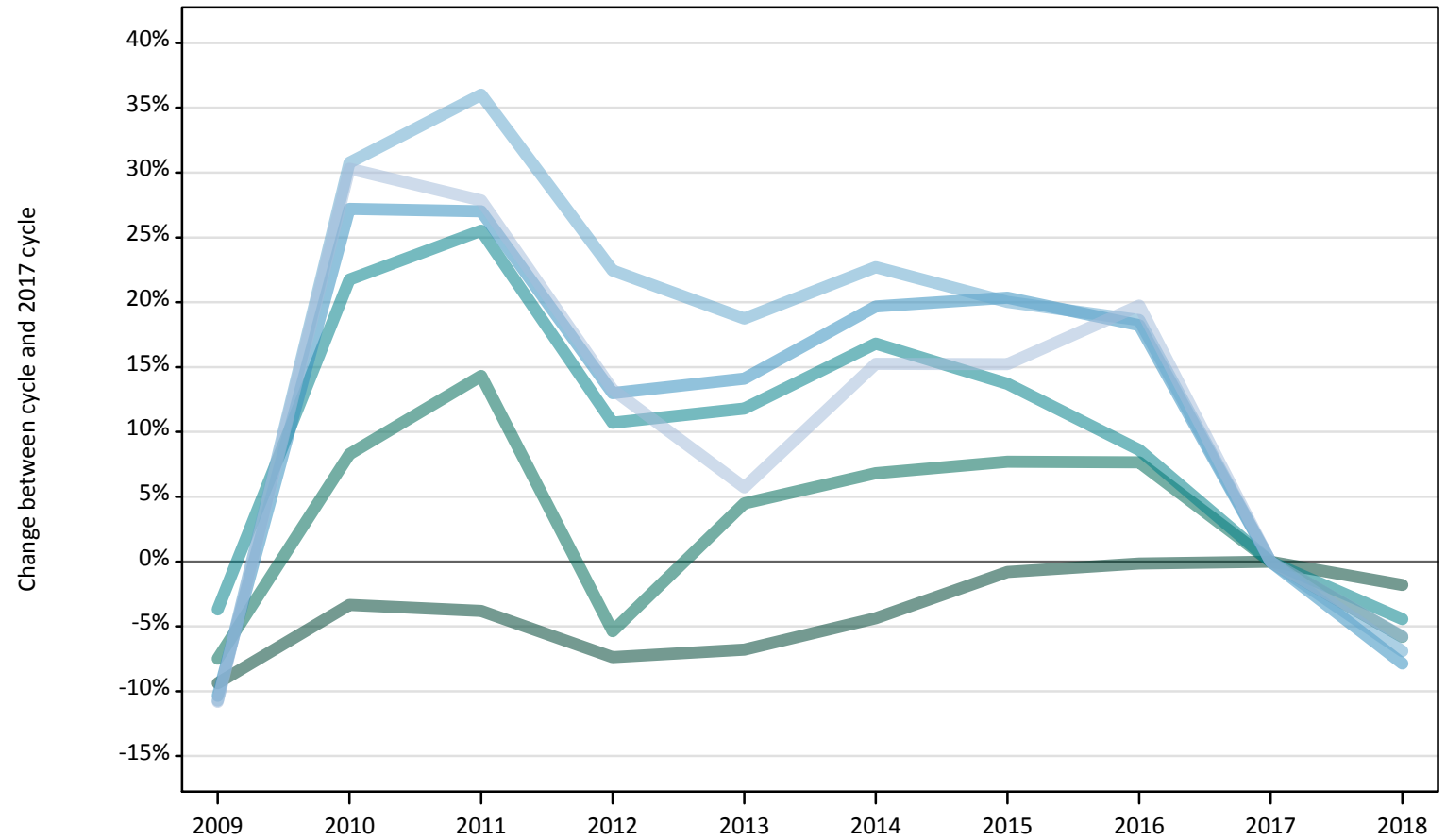
Difference between cycle and 2017 cycle

Domicile and age group		2009	2010	2011	2012	2013	2014	2015	2016	2017	2018
All domiciles	Under 18	-36%	-30%	-29%	-26%	-21%	-12%	-8%	-4%	0%	12%
	18	-14%	-8%	-8%	-10%	-9%	-6%	-2%	-0%	0%	-0%
	19	-14%	1%	8%	-8%	1%	4%	6%	6%	0%	-4%
	20-24	-6%	19%	22%	9%	11%	16%	13%	9%	0%	-4%
	25-29	-8%	28%	28%	13%	14%	18%	20%	17%	0%	-7%
	30-34	-9%	32%	37%	23%	19%	22%	20%	18%	0%	-6%
	35 and over	-10%	31%	28%	14%	6%	15%	15%	20%	0%	-5%
	All ages	-13%	1%	3%	-4%	-2%	2%	4%	4%	0%	-2%

Note: The percentage change is not recorded in the above table for groups with fewer than 10 applicants in that cycle or in the 2017 cycle.

F.2.36 Applicants by age: UK
Difference between cycle and 2017 cycle

- 18
- 19
- 20-24
- 25-29
- 30-34
- 35 and over



Note: The percentage change is not plotted in the above chart for groups with fewer than 500 applicants in any one cycle.

F.2.37 Applicants by age: UK

Domicile and age group		2009	2010	2011	2012	2013	2014	2015	2016	2017	2018
UK	Under 18	2,320	2,350	2,120	1,750	1,580	1,590	1,700	1,730	1,650	1,630
	18	249,780	266,370	265,130	255,300	256,870	263,560	273,400	275,200	275,590	270,620
	19	83,830	98,130	103,600	85,770	94,700	96,820	97,610	97,570	90,630	85,370
	20-24	72,980	92,250	95,120	83,880	84,710	88,520	86,170	82,290	75,770	72,410
	25-29	19,350	27,450	27,410	24,390	24,630	25,830	25,970	25,520	21,580	19,890
	30-34	10,350	15,160	15,770	14,200	13,770	14,230	13,910	13,750	11,590	10,790
	35 and over	17,120	25,010	24,540	21,740	20,290	22,120	22,110	22,980	19,190	18,090
	All ages	455,720	526,710	533,680	487,020	496,550	512,660	520,880	519,030	496,010	478,800

F.2.38 Applicants by age: UK

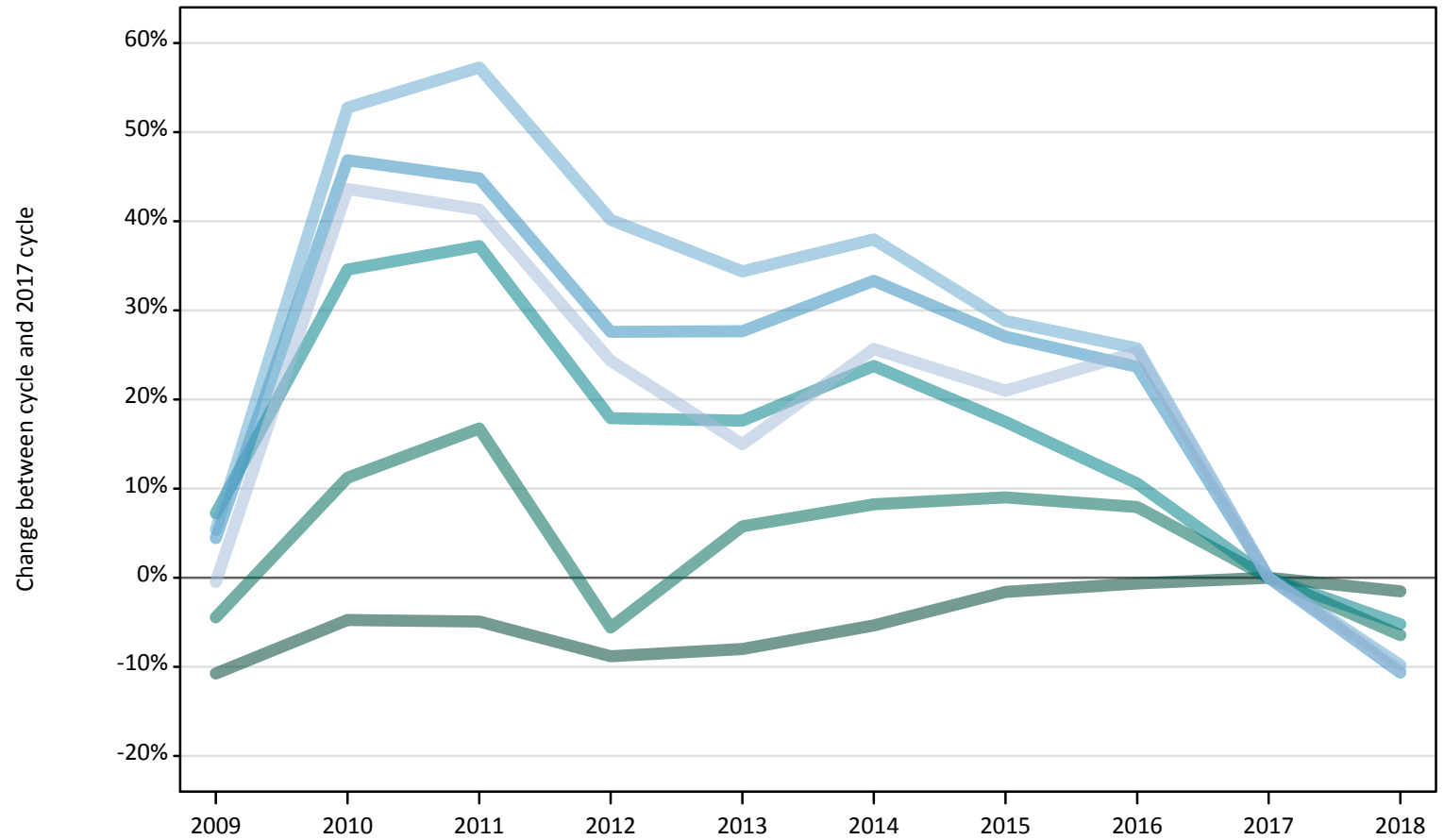
Difference between cycle and 2017 cycle

Domicile and age group		2009	2010	2011	2012	2013	2014	2015	2016	2017	2018
UK	Under 18	41%	42%	28%	6%	-4%	-3%	3%	5%	0%	-1%
	18	-9%	-3%	-4%	-7%	-7%	-4%	-1%	-0%	0%	-2%
	19	-7%	8%	14%	-5%	4%	7%	8%	8%	0%	-6%
	20-24	-4%	22%	26%	11%	12%	17%	14%	9%	0%	-4%
	25-29	-10%	27%	27%	13%	14%	20%	20%	18%	0%	-8%
	30-34	-11%	31%	36%	22%	19%	23%	20%	19%	0%	-7%
	35 and over	-11%	30%	28%	13%	6%	15%	15%	20%	0%	-6%
	All ages	-8%	6%	8%	-2%	0%	3%	5%	5%	0%	-3%

Note: The percentage change is not recorded in the above table for groups with fewer than 10 applicants in that cycle or in the 2017 cycle.

F.2.39 Applicants by age: England
Difference between cycle and 2017 cycle

- 18
- 19
- 20-24
- 25-29
- 30-34
- 35 and over



Note: The percentage change is not plotted in the above chart for groups with fewer than 500 applicants in any one cycle.

F.2.40 Applicants by age: England

Domicile and age group		2009	2010	2011	2012	2013	2014	2015	2016	2017	2018
England	Under 18	1,280	1,300	1,120	880	830	880	930	920	840	820
	18	208,720	222,790	222,390	213,220	215,180	221,370	230,160	232,340	233,830	230,320
	19	74,470	86,650	90,970	73,570	82,410	84,320	84,950	84,100	77,910	72,920
	20-24	61,250	76,880	78,400	67,360	67,190	70,700	67,120	63,180	57,130	54,140
	25-29	16,100	22,640	22,330	19,670	19,680	20,560	19,590	19,060	15,420	13,780
	30-34	8,890	12,880	13,260	11,820	11,330	11,640	10,870	10,610	8,430	7,610
	35 and over	14,880	21,470	21,120	18,590	17,190	18,790	18,080	18,730	14,950	13,410
	All ages	385,600	444,620	449,580	405,110	413,820	428,250	431,700	428,940	408,500	392,990

F.2.41 Applicants by age: England

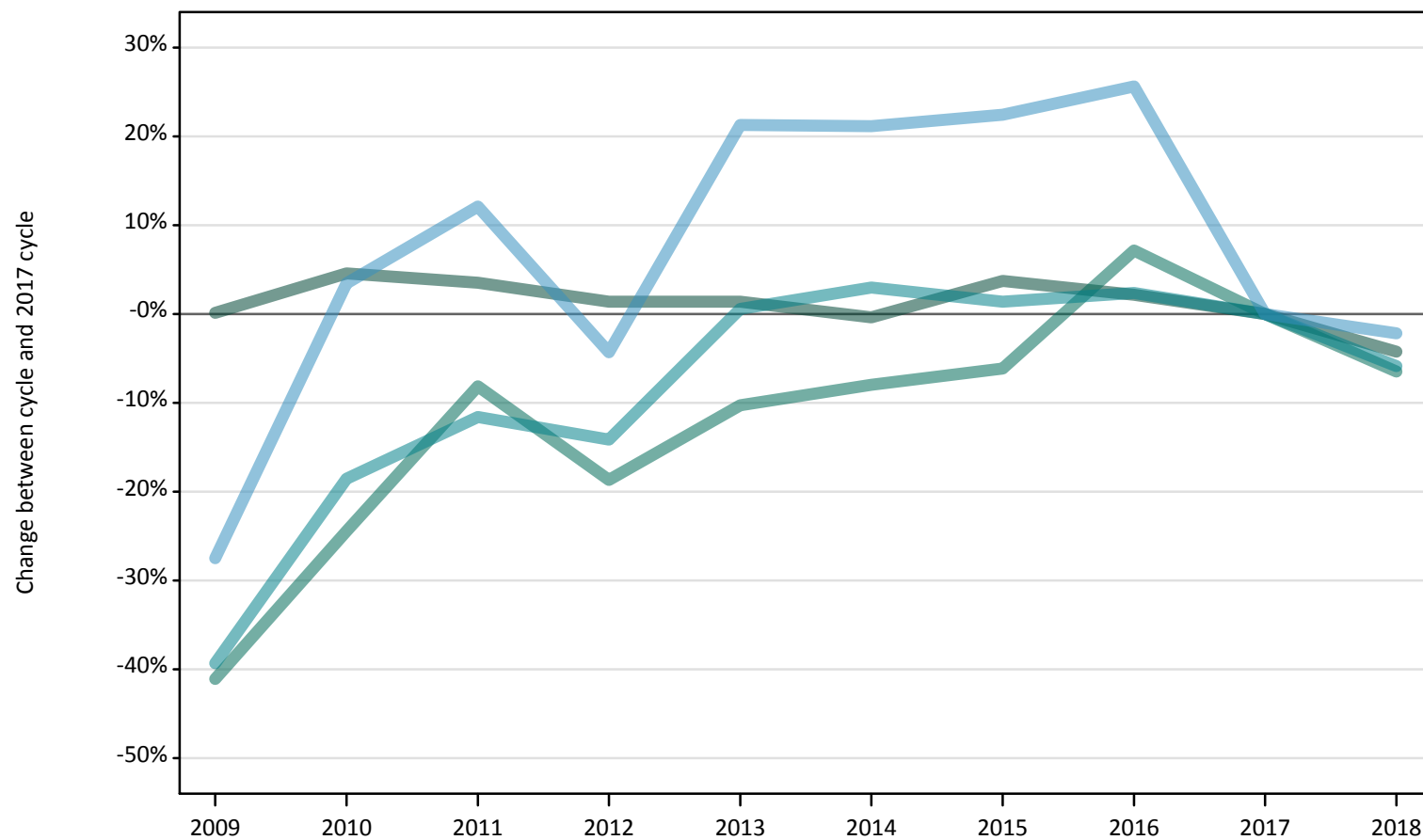
Difference between cycle and 2017 cycle

Domicile and age group		2009	2010	2011	2012	2013	2014	2015	2016	2017	2018
England	Under 18	53%	55%	34%	5%	-0%	5%	11%	9%	0%	-2%
	18	-11%	-5%	-5%	-9%	-8%	-5%	-2%	-1%	0%	-2%
	19	-4%	11%	17%	-6%	6%	8%	9%	8%	0%	-6%
	20-24	7%	35%	37%	18%	18%	24%	17%	11%	0%	-5%
	25-29	4%	47%	45%	28%	28%	33%	27%	24%	0%	-11%
	30-34	5%	53%	57%	40%	34%	38%	29%	26%	0%	-10%
	35 and over	-0%	44%	41%	24%	15%	26%	21%	25%	0%	-10%
	All ages	-6%	9%	10%	-1%	1%	5%	6%	5%	0%	-4%

Note: The percentage change is not recorded in the above table for groups with fewer than 10 applicants in that cycle or in the 2017 cycle.

F.2.42 Applicants by age: Northern Ireland
Difference between cycle and 2017 cycle

- 18
- 19
- 20-24
- 25-29
- 30-34
- 35 and over



Note: The percentage change is not plotted in the above chart for groups with fewer than 500 applicants in any one cycle.

F.2.43 Applicants by age: Northern Ireland

Domicile and age group		2009	2010	2011	2012	2013	2014	2015	2016	2017	2018
Northern Ireland	Under 18	60	60	50	50	40	30	30	40	30	30
	18	11,540	12,060	11,940	11,690	11,690	11,490	11,960	11,780	11,530	11,040
	19	1,940	2,490	3,020	2,670	2,950	3,030	3,090	3,520	3,290	3,080
	20-24	2,210	2,960	3,220	3,120	3,660	3,750	3,690	3,720	3,640	3,420
	25-29	500	720	780	670	840	840	850	870	700	680
	30-34	200	270	270	280	360	370	400	400	370	320
	35 and over	270	380	360	320	420	420	420	450	410	400
	All ages	16,720	18,930	19,630	18,800	19,960	19,910	20,440	20,780	19,950	18,970

F.2.44 Applicants by age: Northern Ireland

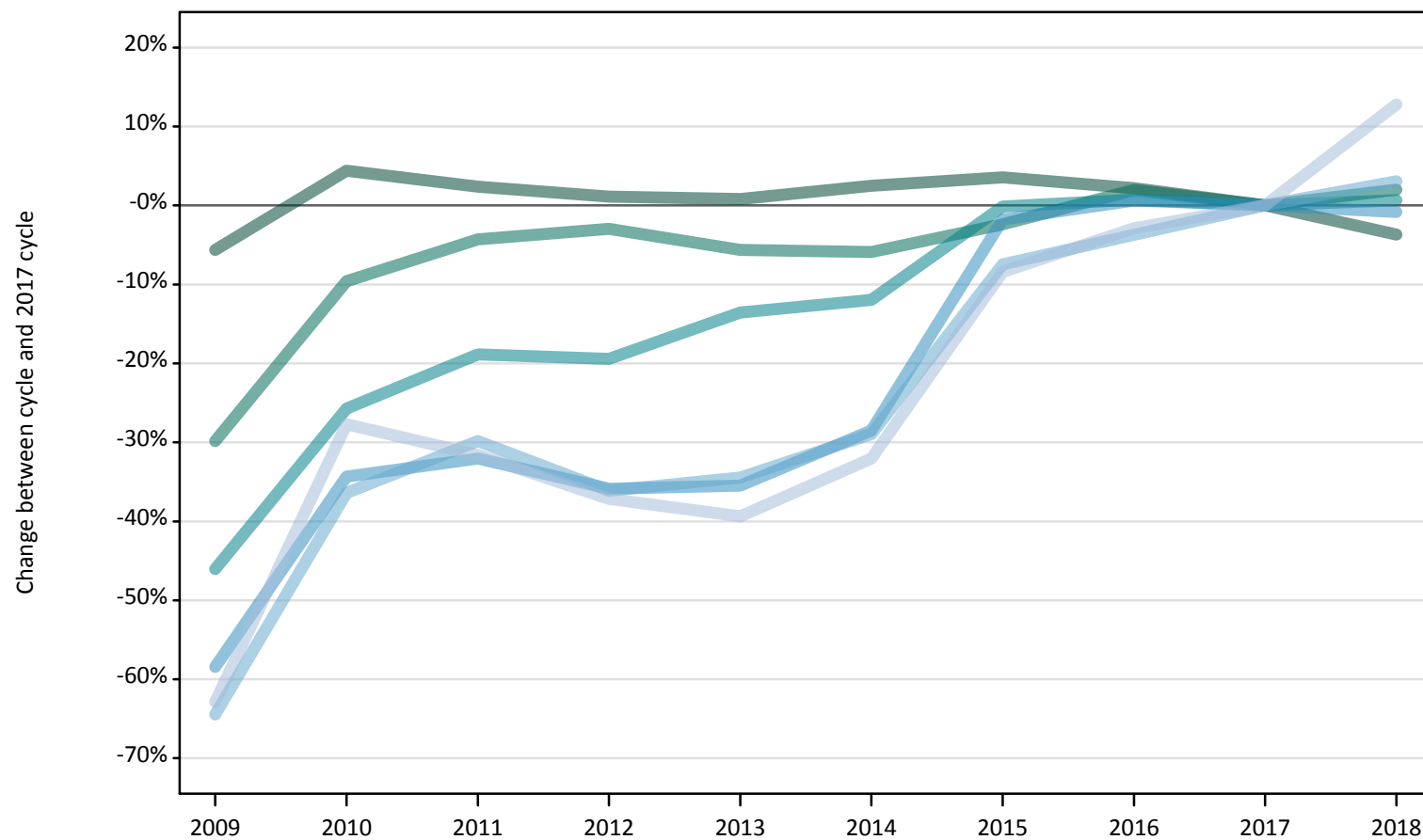
Difference between cycle and 2017 cycle

Domicile and age group		2009	2010	2011	2012	2013	2014	2015	2016	2017	2018
Northern Ireland	Under 18	132%	120%	88%	104%	40%	12%	36%	60%	0%	16%
	18	0%	5%	4%	1%	1%	-0%	4%	2%	0%	-4%
	19	-41%	-24%	-8%	-19%	-10%	-8%	-6%	7%	0%	-6%
	20-24	-39%	-19%	-12%	-14%	1%	3%	1%	2%	0%	-6%
	25-29	-27%	3%	12%	-4%	21%	21%	22%	26%	0%	-2%
	30-34	-45%	-29%	-27%	-26%	-2%	-2%	9%	8%	0%	-14%
	35 and over	-34%	-6%	-11%	-22%	3%	2%	3%	10%	0%	-1%
	All ages	-16%	-5%	-2%	-6%	0%	-0%	2%	4%	0%	-5%

Note: The percentage change is not recorded in the above table for groups with fewer than 10 applicants in that cycle or in the 2017 cycle.

F.2.45 Applicants by age: Scotland
Difference between cycle and 2017 cycle

- 18
- 19
- 20-24
- 25-29
- 30-34
- 35 and over



Note: The percentage change is not plotted in the above chart for groups with fewer than 500 applicants in any one cycle.

F.2.46 Applicants by age: Scotland

Domicile and age group		2009	2010	2011	2012	2013	2014	2015	2016	2017	2018
Scotland	Under 18	940	940	900	790	670	660	710	740	770	760
	18	17,770	19,660	19,280	19,040	18,980	19,300	19,500	19,250	18,830	18,130
	19	4,020	5,180	5,490	5,560	5,410	5,400	5,600	5,850	5,730	5,850
	20-24	6,310	8,680	9,480	9,420	10,100	10,290	11,670	11,780	11,690	11,760
	25-29	1,830	2,890	2,990	2,830	2,840	3,150	4,330	4,430	4,400	4,370
	30-34	790	1,410	1,550	1,410	1,450	1,570	2,050	2,130	2,210	2,280
	35 and over	1,140	2,220	2,100	1,930	1,860	2,090	2,810	2,980	3,070	3,470
	All ages	32,800	40,980	41,800	40,980	41,320	42,460	46,670	47,150	46,720	46,620

F.2.47 Applicants by age: Scotland

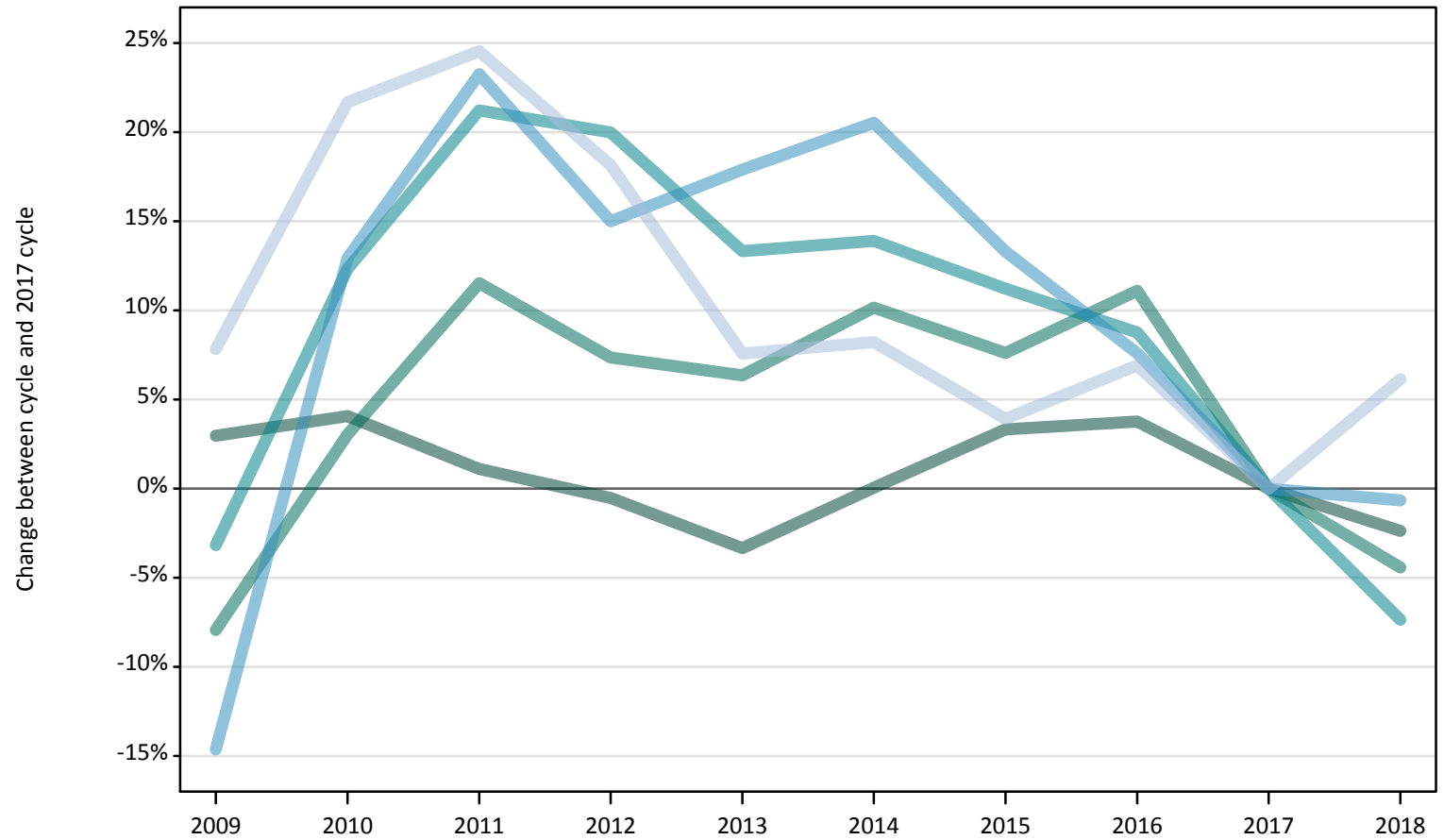
Difference between cycle and 2017 cycle

Domicile and age group		2009	2010	2011	2012	2013	2014	2015	2016	2017	2018
Scotland	Under 18	21%	22%	17%	2%	-13%	-15%	-8%	-4%	0%	-2%
	18	-6%	4%	2%	1%	1%	3%	4%	2%	0%	-4%
	19	-30%	-10%	-4%	-3%	-6%	-6%	-2%	2%	0%	2%
	20-24	-46%	-26%	-19%	-19%	-14%	-12%	-0%	1%	0%	1%
	25-29	-58%	-34%	-32%	-36%	-35%	-29%	-2%	1%	0%	-1%
	30-34	-64%	-36%	-30%	-36%	-34%	-29%	-7%	-4%	0%	3%
	35 and over	-63%	-28%	-32%	-37%	-39%	-32%	-8%	-3%	0%	13%
	All ages	-30%	-12%	-11%	-12%	-12%	-9%	-0%	1%	0%	-0%

Note: The percentage change is not recorded in the above table for groups with fewer than 10 applicants in that cycle or in the 2017 cycle.

F.2.48 Applicants by age: Wales
Difference between cycle and 2017 cycle

- 18
- 19
- 20-24
- 25-29
- 30-34
- 35 and over



Note: The percentage change is not plotted in the above chart for groups with fewer than 500 applicants in any one cycle.

F.2.49 Applicants by age: Wales

Domicile and age group		2009	2010	2011	2012	2013	2014	2015	2016	2017	2018
Wales	Under 18	40	50	50	30	40	30	20	30	20	30
	18	11,740	11,870	11,530	11,340	11,020	11,410	11,780	11,830	11,400	11,130
	19	3,400	3,810	4,120	3,970	3,930	4,070	3,980	4,110	3,700	3,530
	20-24	3,210	3,730	4,020	3,980	3,760	3,780	3,690	3,610	3,320	3,070
	25-29	910	1,210	1,320	1,230	1,260	1,290	1,210	1,150	1,070	1,060
	30-34	470	600	680	680	620	650	600	620	570	580
	35 and over	830	930	950	910	820	830	800	820	770	810
	All ages	20,600	22,190	22,670	22,130	21,450	22,050	22,070	22,160	20,840	20,220

F.2.50 Applicants by age: Wales

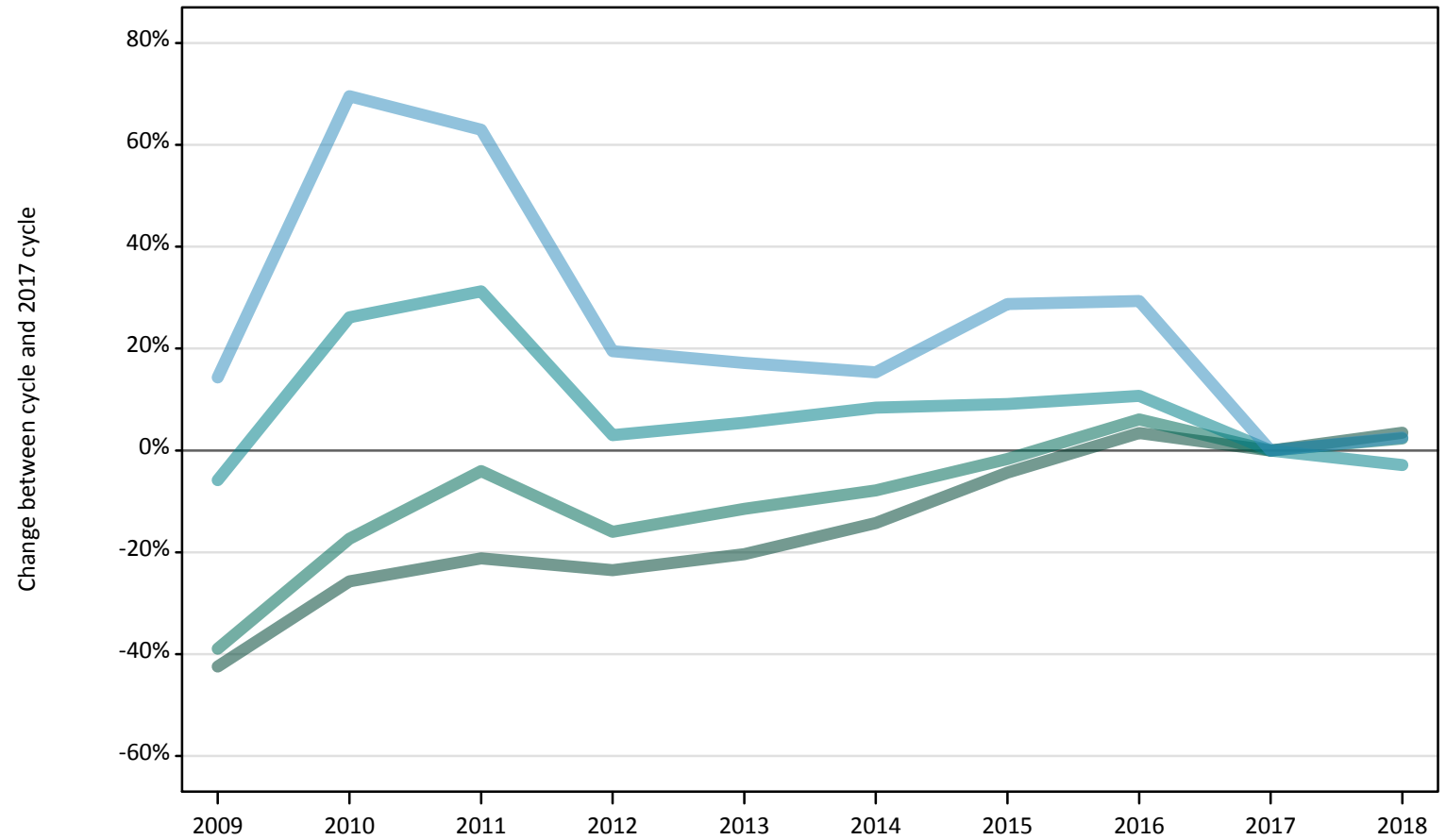
Difference between cycle and 2017 cycle

Domicile and age group		2009	2010	2011	2012	2013	2014	2015	2016	2017	2018
Wales	Under 18	180%	220%	207%	73%	153%	87%	33%	93%	0%	87%
	18	3%	4%	1%	-1%	-3%	0%	3%	4%	0%	-2%
	19	-8%	3%	12%	7%	6%	10%	8%	11%	0%	-4%
	20-24	-3%	12%	21%	20%	13%	14%	11%	9%	0%	-7%
	25-29	-15%	13%	23%	15%	18%	21%	13%	8%	0%	-1%
	30-34	-18%	5%	19%	19%	8%	13%	4%	7%	0%	1%
	35 and over	8%	22%	25%	18%	8%	8%	4%	7%	0%	6%
	All ages	-1%	6%	9%	6%	3%	6%	6%	6%	0%	-3%

Note: The percentage change is not recorded in the above table for groups with fewer than 10 applicants in that cycle or in the 2017 cycle.

F.2.51 Applicants by age: EU (excluding UK)
Difference between cycle and 2017 cycle

- 18
- 19
- 20-24
- 25-29
- 30-34
- 35 and over



Note: The percentage change is not plotted in the above chart for groups with fewer than 500 applicants in any one cycle.

F.2.52 Applicants by age: EU (excluding UK)

Domicile and age group		2009	2010	2011	2012	2013	2014	2015	2016	2017	2018
EU (excluding UK)	Under 18	2,520	2,760	2,950	2,840	3,010	3,340	3,800	3,910	3,950	4,160
	18	9,660	12,460	13,220	12,830	13,360	14,380	16,040	17,340	16,770	17,350
	19	8,380	11,340	13,160	11,530	12,140	12,640	13,490	14,550	13,720	14,040
	20-24	8,740	11,700	12,180	9,560	9,790	10,060	10,120	10,270	9,280	9,020
	25-29	1,130	1,680	1,610	1,180	1,160	1,140	1,270	1,280	990	1,010
	30-34	260	420	410	350	320	280	290	250	240	260
	35 and over	190	300	260	270	250	260	250	260	190	200
	All ages	30,870	40,650	43,800	38,540	40,030	42,090	45,270	47,870	45,140	46,040

F.2.53 Applicants by age: EU (excluding UK)

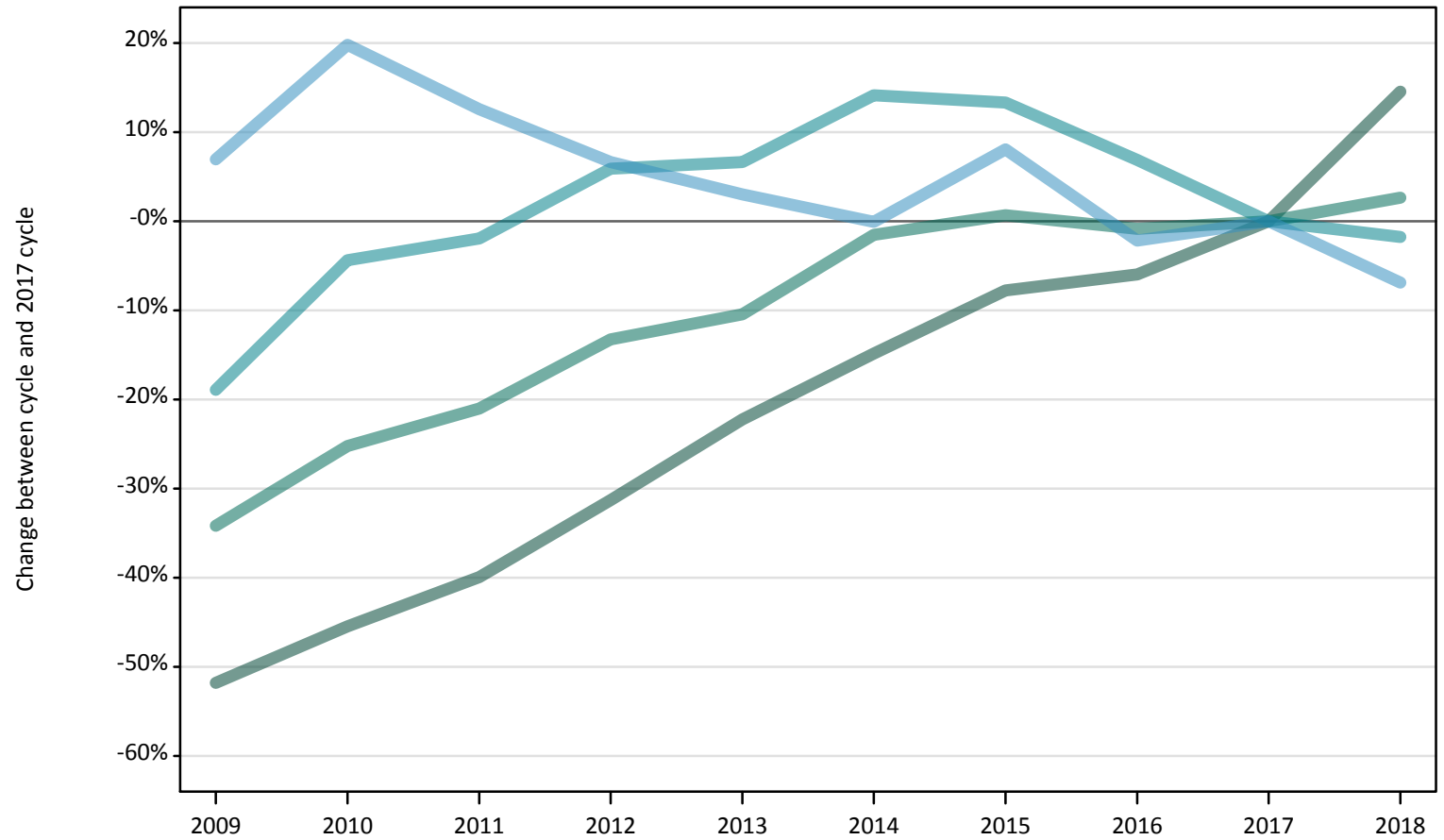
Difference between cycle and 2017 cycle

Domicile and age group		2009	2010	2011	2012	2013	2014	2015	2016	2017	2018
EU (excluding UK)	Under 18	-36%	-30%	-25%	-28%	-24%	-16%	-4%	-1%	0%	5%
	18	-42%	-26%	-21%	-24%	-20%	-14%	-4%	3%	0%	3%
	19	-39%	-17%	-4%	-16%	-11%	-8%	-2%	6%	0%	2%
	20-24	-6%	26%	31%	3%	5%	8%	9%	11%	0%	-3%
	25-29	14%	70%	63%	20%	17%	15%	29%	29%	0%	3%
	30-34	9%	77%	75%	46%	35%	17%	22%	4%	0%	8%
	35 and over	-2%	54%	37%	38%	31%	33%	31%	35%	0%	5%
	All ages	-32%	-10%	-3%	-15%	-11%	-7%	0%	6%	0%	2%

Note: The percentage change is not recorded in the above table for groups with fewer than 10 applicants in that cycle or in the 2017 cycle.

F.2.54 Applicants by age: Not EU
Difference between cycle and 2017 cycle

- 18
- 19
- 20-24
- 25-29
- 30-34
- 35 and over



Note: The percentage change is not plotted in the above chart for groups with fewer than 500 applicants in any one cycle.

F.2.55 Applicants by age: Not EU

Domicile and age group		2009	2010	2011	2012	2013	2014	2015	2016	2017	2018
Not EU	Under 18	2,560	2,930	3,140	3,920	4,490	5,210	5,100	5,410	5,890	7,050
	18	11,770	13,310	14,660	16,770	18,980	20,780	22,510	22,950	24,400	27,950
	19	9,950	11,310	11,940	13,120	13,540	14,880	15,220	14,990	15,120	15,510
	20-24	10,440	12,300	12,620	13,630	13,720	14,680	14,580	13,750	12,870	12,640
	25-29	1,680	1,880	1,760	1,670	1,610	1,570	1,690	1,530	1,570	1,460
	30-34	580	660	600	550	500	520	520	480	460	470
	35 and over	420	480	390	410	340	360	380	350	330	350
	All ages	37,390	42,860	45,110	50,060	53,180	58,000	60,000	59,460	60,630	65,440

F.2.56 Applicants by age: Not EU

Difference between cycle and 2017 cycle

Domicile and age group		2009	2010	2011	2012	2013	2014	2015	2016	2017	2018
Not EU	Under 18	-57%	-50%	-47%	-33%	-24%	-12%	-13%	-8%	0%	20%
	18	-52%	-45%	-40%	-31%	-22%	-15%	-8%	-6%	0%	15%
	19	-34%	-25%	-21%	-13%	-10%	-2%	1%	-1%	0%	3%
	20-24	-19%	-4%	-2%	6%	7%	14%	13%	7%	0%	-2%
	25-29	7%	20%	13%	7%	3%	-0%	8%	-2%	0%	-7%
	30-34	25%	43%	29%	19%	8%	11%	12%	4%	0%	1%
	35 and over	30%	48%	19%	25%	5%	11%	18%	8%	0%	9%
	All ages	-38%	-29%	-26%	-17%	-12%	-4%	-1%	-2%	0%	8%

Note: The percentage change is not recorded in the above table for groups with fewer than 10 applicants in that cycle or in the 2017 cycle.

F.2.57 Technical notes and definitions

Applicants have been able to submit applications for all 2018 courses since early September.

Applicants who submit their applications to UCAS by the January deadline are considered 'on time' applicants for the large majority of courses offered through UCAS. Some art and design courses have a later deadline of 24 March. Almost all main scheme applications have been received by the 24 March deadline.

This statistical release covers all Main Scheme applicants who submit their applications to UCAS by the March deadline, including those who have applied for courses with a 15 October or January deadline. Counts of RPAs (records of prior acceptance) are not included.

Counts of the number of applicants reported have been rounded to the nearest 10 applicants, this may result in instances where totals do not equal the sum of the components. Proportional changes have been rounded to the nearest whole percentage point.

Age

This statistical release uses country-specific age definitions which align with the cut off points for school/college cohorts within the different administrations of the UK. For England and Wales ages are defined on the 31 August, for Northern Ireland on the 1 July and for Scotland on the 28 February the following year. Defining ages in this way matches the assignment of children to school cohorts. For applicants outside of the UK the cohort cut off for England and Wales has been used.

Applicant

A person who has made an application in the UCAS system during the cycle reported (including applications for deferred entry). Records of prior acceptance (RPAs) are excluded.

Application

An application to a course at a provider made by an applicant in the UCAS main scheme. Applicants may make up to five main scheme applications.

Country of provider

An applicant may be counted once for each provider country they have applied to in the main scheme. If an applicant has applied to providers in multiple countries then the applicant is counted once within each country of provider applied to.

Domicile

Declared area of permanent residence. The Channel Islands and the Isle of Man have been assigned as 'Not EU'.

Ethnic group

High level grouping of ethnic origin as declared by the applicant: 'Asian', 'Black', 'Mixed', 'White', 'Other', 'Unknown'.

First time applicant

An applicant that did not apply to the UCAS scheme in the previous cycle.

Main scheme

The main UCAS application scheme through which up to five providers/courses can be applied to. This opens in September and closes to new applications on 30 June the following year.

Reapplicant

An applicant that applied to the UCAS scheme in the previous cycle.

Sex

As declared by the applicant.

SIMD 2016

Scottish Index of Multiple Deprivation identifies small area concentrations of multiple deprivation across all of Scotland, providing a relative measure of deprivation among small areas (data zones). In this report, the SIMD 2016 has been used to group areas in each year in the times series.

POLAR3

Developed by HEFCE and classifies small areas across the UK into five groups, according to their level of young participation in HE. Each of these groups represents around 20 per cent of young people, and is ranked from quintile 1 (areas with the lowest young participation rates, considered as the most disadvantaged) to quintile 5 (highest young participation rates, considered most advantaged).

POLAR4

Developed by HEFCE and classifies small areas across the UK into five groups, according to their level of young participation in HE. Each of these groups represents around 20 per cent of young people, and is ranked from quintile 1 (areas with the lowest young participation rates, considered as the most disadvantaged) to quintile 5 (highest young participation rates, considered most advantaged). POLAR4 is the most recent version of the POLAR classification, and is available for the first time in UCAS? reporting since its launch in 2017.

Tariff Group of provider

Providers are grouped as higher, medium or lower tariff based on their average levels of attainment of their accepted applicants (summarised through UCAS Tariff points) in recent cycles. Each group of providers accounted for around a third of all UK 18 year old acceptances in recent cycles.

Subject group

The JACS3 classification used to classify courses into subject groups.