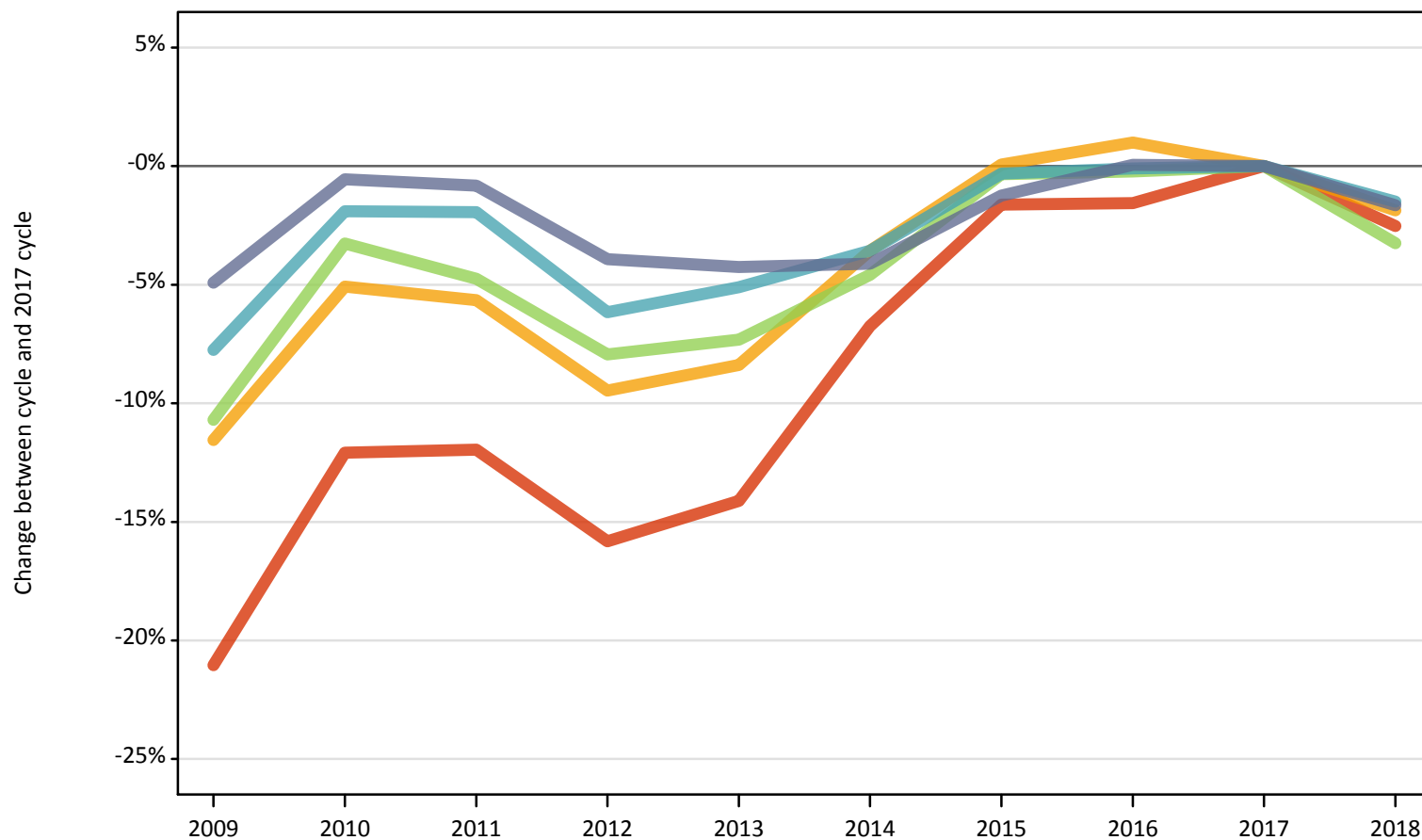


March Deadline Analysis: POLAR4 quintile

18 year old applicants by POLAR4 quintile and sex at the 24 March deadline

F.12.1 18 year old applicants by POLAR4 quintile: UK Difference between cycle and 2017 cycle

- Quintile 1
- Quintile 2
- Quintile 3
- Quintile 4
- Quintile 5



Note: The percentage change is not plotted in the above chart for groups with fewer than 500 applicants in any one cycle.

F.12.2 18 year old applicants by POLAR4 quintile: UK

POLAR4 quintile of applicant		2009	2010	2011	2012	2013	2014	2015	2016	2017	2018
UK	Quintile 1	23,370	26,020	26,060	24,910	25,420	27,600	29,110	29,130	29,590	28,840
	Quintile 2	36,230	38,880	38,640	37,080	37,520	39,490	40,980	41,360	40,960	40,190
	Quintile 3	46,000	49,830	49,070	47,420	47,740	49,140	51,330	51,400	51,510	49,830
	Quintile 4	57,870	61,540	61,510	58,870	59,530	60,500	62,540	62,670	62,740	61,800
	Quintile 5	85,630	89,560	89,320	86,520	86,230	86,350	88,930	90,110	90,060	88,570

F.12.3 18 year old applicants by POLAR4 quintile: UK

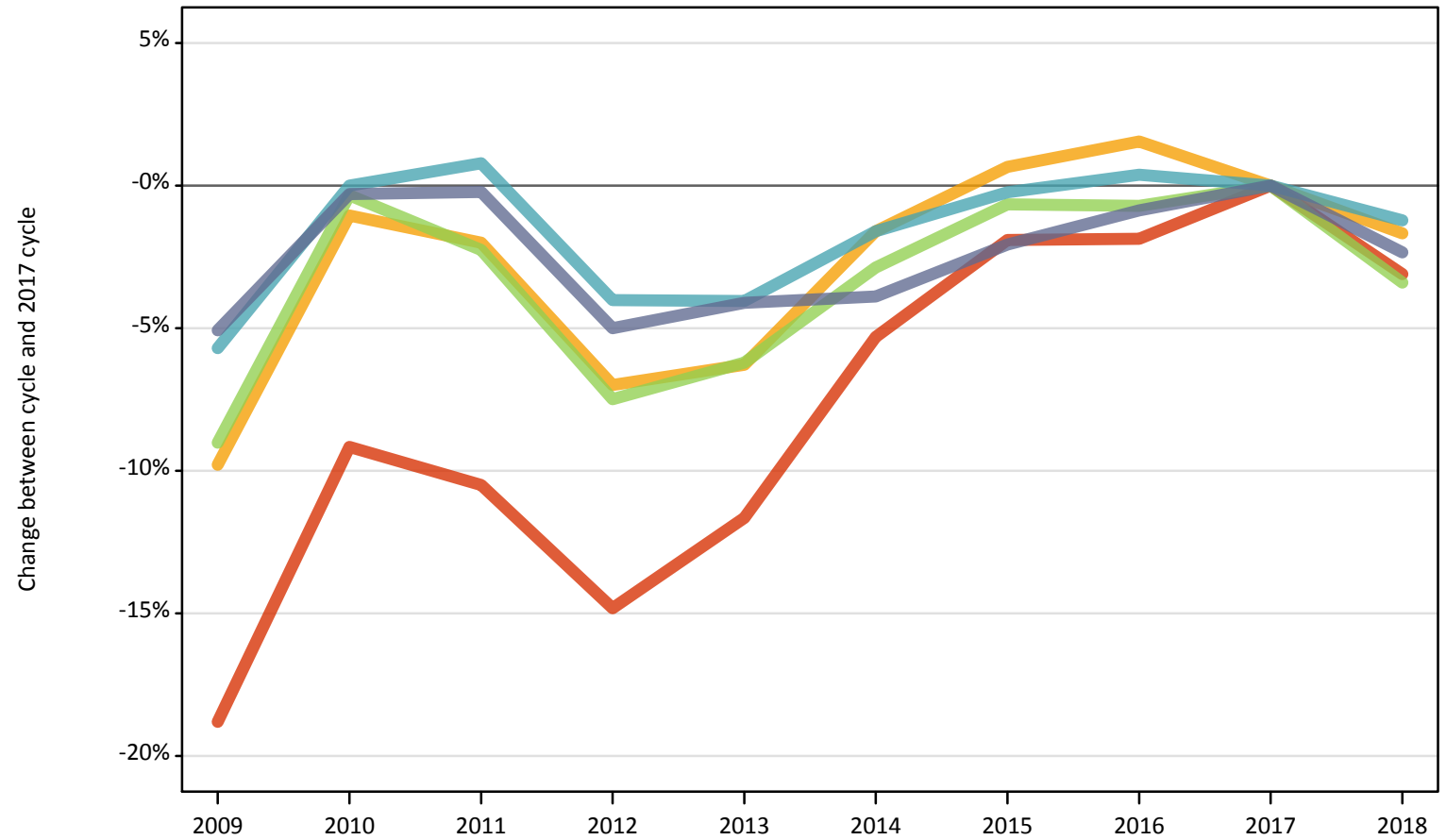
Difference between cycle and 2017 cycle

POLAR4 quintile of applicant		2009	2010	2011	2012	2013	2014	2015	2016	2017	2018
UK	Quintile 1	-21%	-12%	-12%	-16%	-14%	-7%	-2%	-2%	0%	-3%
	Quintile 2	-12%	-5%	-6%	-9%	-8%	-4%	0%	1%	0%	-2%
	Quintile 3	-11%	-3%	-5%	-8%	-7%	-5%	-0%	-0%	0%	-3%
	Quintile 4	-8%	-2%	-2%	-6%	-5%	-4%	-0%	-0%	0%	-1%
	Quintile 5	-5%	-1%	-1%	-4%	-4%	-4%	-1%	0%	0%	-2%

Note: The percentage change is not recorded in the above table for groups with fewer than 10 applicants in that cycle or in the 2017 cycle.

F.12.4 18 year old applicants by POLAR4 quintile: UK (Men)
Difference between cycle and 2017 cycle

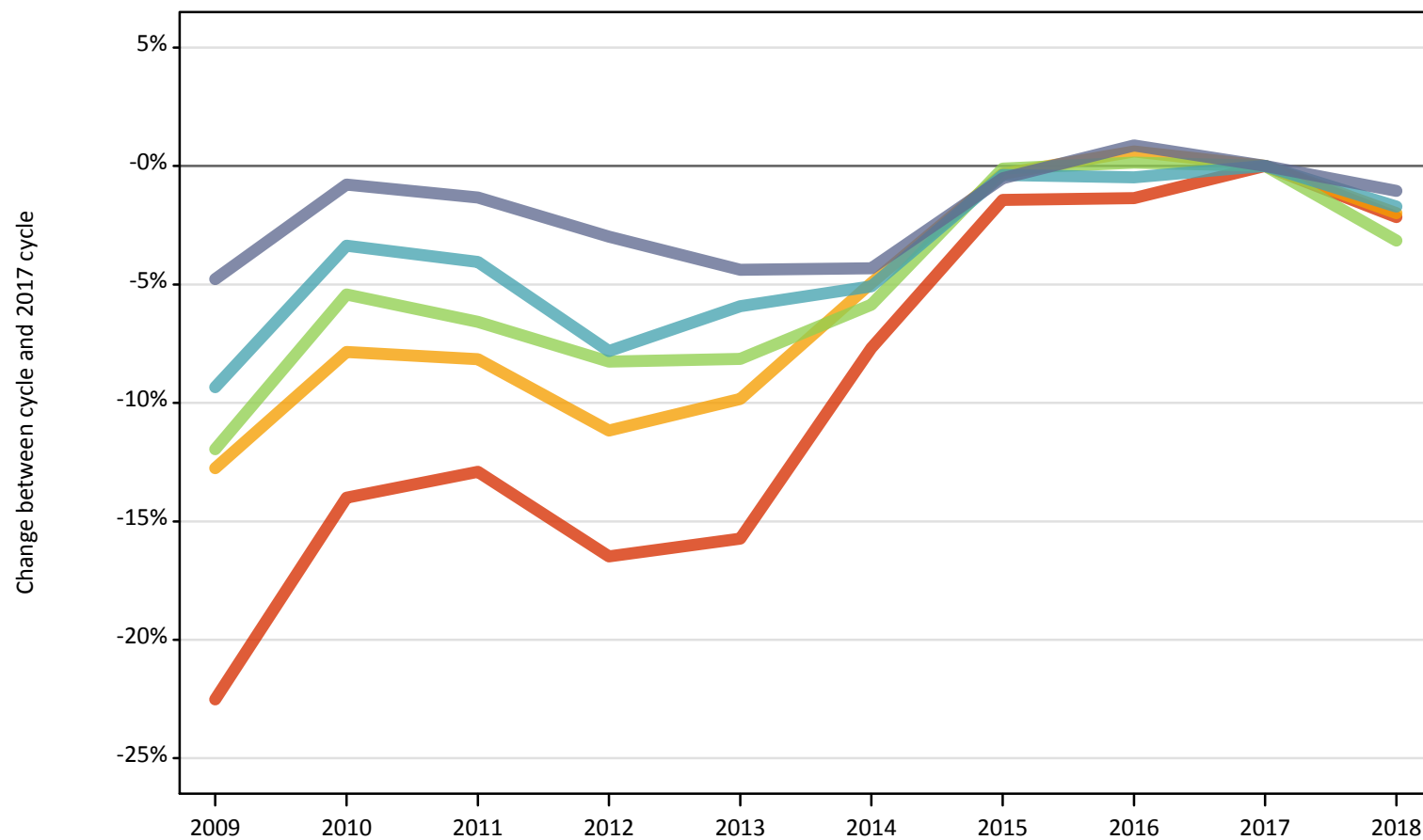
- Quintile 1
- Quintile 2
- Quintile 3
- Quintile 4
- Quintile 5



Note: The percentage change is not plotted in the above chart for groups with fewer than 500 applicants in any one cycle.

F.12.5 18 year old applicants by POLAR4 quintile: UK (Women)
Difference between cycle and 2017 cycle

- Quintile 1
- Quintile 2
- Quintile 3
- Quintile 4
- Quintile 5



Note: The percentage change is not plotted in the above chart for groups with fewer than 500 applicants in any one cycle.

F.12.6 18 year old applicants by sex and POLAR4 quintile: UK

Sex and POLAR4 quintile of applicant		2009	2010	2011	2012	2013	2014	2015	2016	2017	2018
Women	Quintile 1	13,850	15,370	15,570	14,930	15,060	16,500	17,620	17,630	17,880	17,490
	Quintile 2	21,160	22,350	22,270	21,540	21,870	23,060	24,170	24,400	24,250	23,770
	Quintile 3	26,120	28,050	27,710	27,210	27,250	27,930	29,630	29,700	29,660	28,730
	Quintile 4	32,130	34,250	34,010	32,670	33,340	33,640	35,310	35,270	35,440	34,840
	Quintile 5	45,770	47,680	47,420	46,630	45,950	45,980	47,810	48,480	48,060	47,560
Men	Quintile 1	9,520	10,640	10,490	9,980	10,350	11,100	11,490	11,500	11,720	11,350
	Quintile 2	15,070	16,530	16,370	15,540	15,650	16,440	16,810	16,960	16,700	16,420
	Quintile 3	19,880	21,770	21,360	20,210	20,490	21,220	21,700	21,690	21,850	21,100
	Quintile 4	25,740	27,300	27,510	26,200	26,190	26,860	27,230	27,400	27,300	26,960
	Quintile 5	39,860	41,870	41,900	39,900	40,270	40,360	41,130	41,630	42,000	41,010

F.12.7 18 year old applicants by sex and POLAR4 quintile: UK

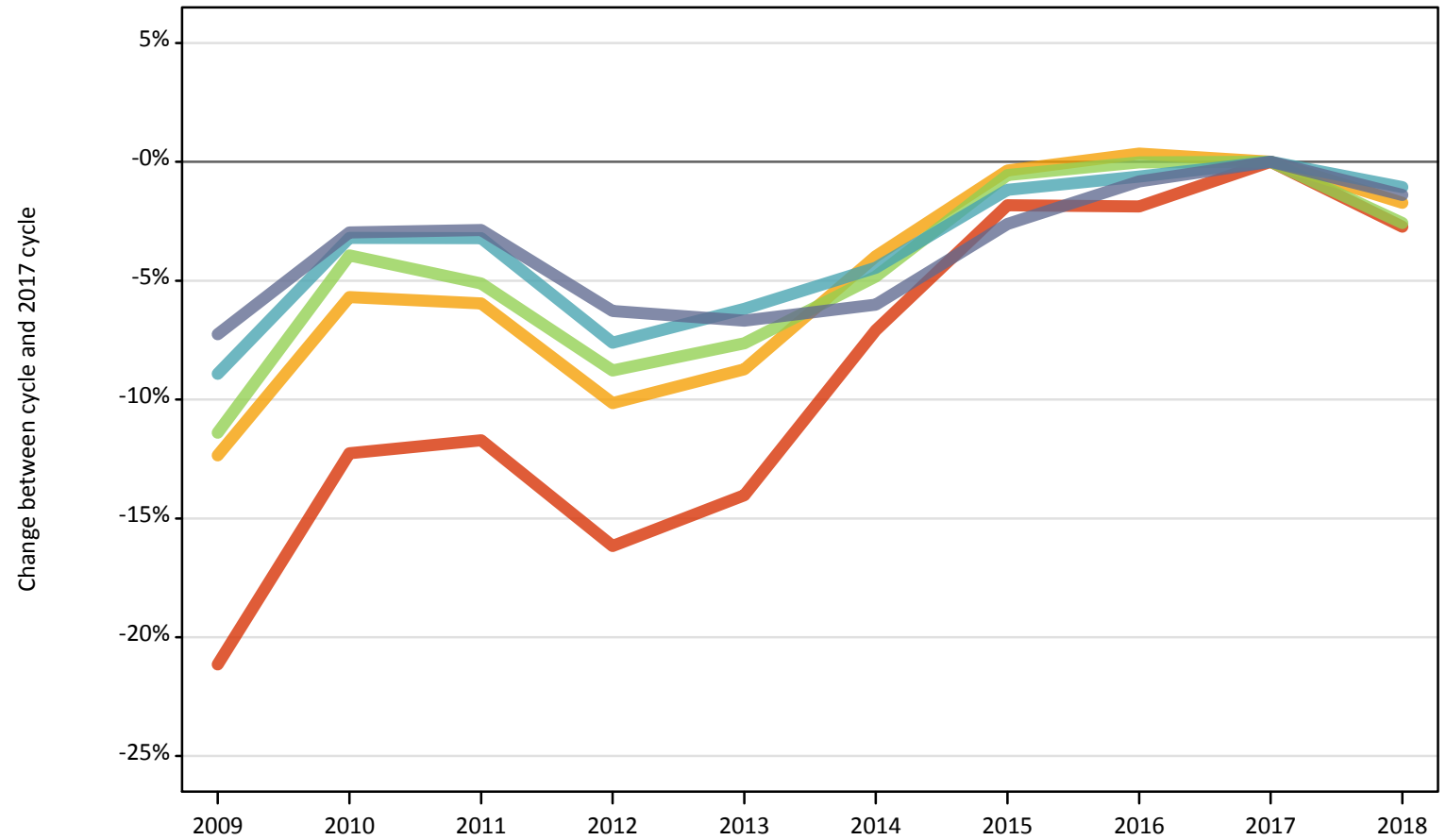
Difference between cycle and 2017 cycle

Sex and POLAR4 quintile of applicant		2009	2010	2011	2012	2013	2014	2015	2016	2017	2018
Women	Quintile 1	-23%	-14%	-13%	-16%	-16%	-8%	-1%	-1%	0%	-2%
	Quintile 2	-13%	-8%	-8%	-11%	-10%	-5%	-0%	1%	0%	-2%
	Quintile 3	-12%	-5%	-7%	-8%	-8%	-6%	-0%	0%	0%	-3%
	Quintile 4	-9%	-3%	-4%	-8%	-6%	-5%	-0%	-0%	0%	-2%
	Quintile 5	-5%	-1%	-1%	-3%	-4%	-4%	-1%	1%	0%	-1%
Men	Quintile 1	-19%	-9%	-10%	-15%	-12%	-5%	-2%	-2%	0%	-3%
	Quintile 2	-10%	-1%	-2%	-7%	-6%	-2%	1%	2%	0%	-2%
	Quintile 3	-9%	-0%	-2%	-7%	-6%	-3%	-1%	-1%	0%	-3%
	Quintile 4	-6%	0%	1%	-4%	-4%	-2%	-0%	0%	0%	-1%
	Quintile 5	-5%	-0%	-0%	-5%	-4%	-4%	-2%	-1%	0%	-2%

Note: The percentage change is not recorded in the above table for groups with fewer than 10 applicants in that cycle or in the 2017 cycle.

F.12.8 18 year old applicants by POLAR4 quintile: England
Difference between cycle and 2017 cycle

- Quintile 1
- Quintile 2
- Quintile 3
- Quintile 4
- Quintile 5



Note: The percentage change is not plotted in the above chart for groups with fewer than 500 applicants in any one cycle.

F.12.9 18 year old applicants by POLAR4 quintile: England

POLAR4 quintile of applicant		2009	2010	2011	2012	2013	2014	2015	2016	2017	2018
England	Quintile 1	20,420	22,720	22,860	21,710	22,260	24,060	25,420	25,410	25,890	25,180
	Quintile 2	31,070	33,430	33,330	31,850	32,350	34,040	35,320	35,570	35,450	34,830
	Quintile 3	38,650	41,900	41,390	39,790	40,290	41,520	43,380	43,610	43,620	42,500
	Quintile 4	48,490	51,540	51,530	49,200	49,950	50,870	52,620	52,920	53,250	52,680
	Quintile 5	69,540	72,750	72,840	70,280	69,970	70,480	73,020	74,370	74,990	73,940

F.12.10 18 year old applicants by POLAR4 quintile: England

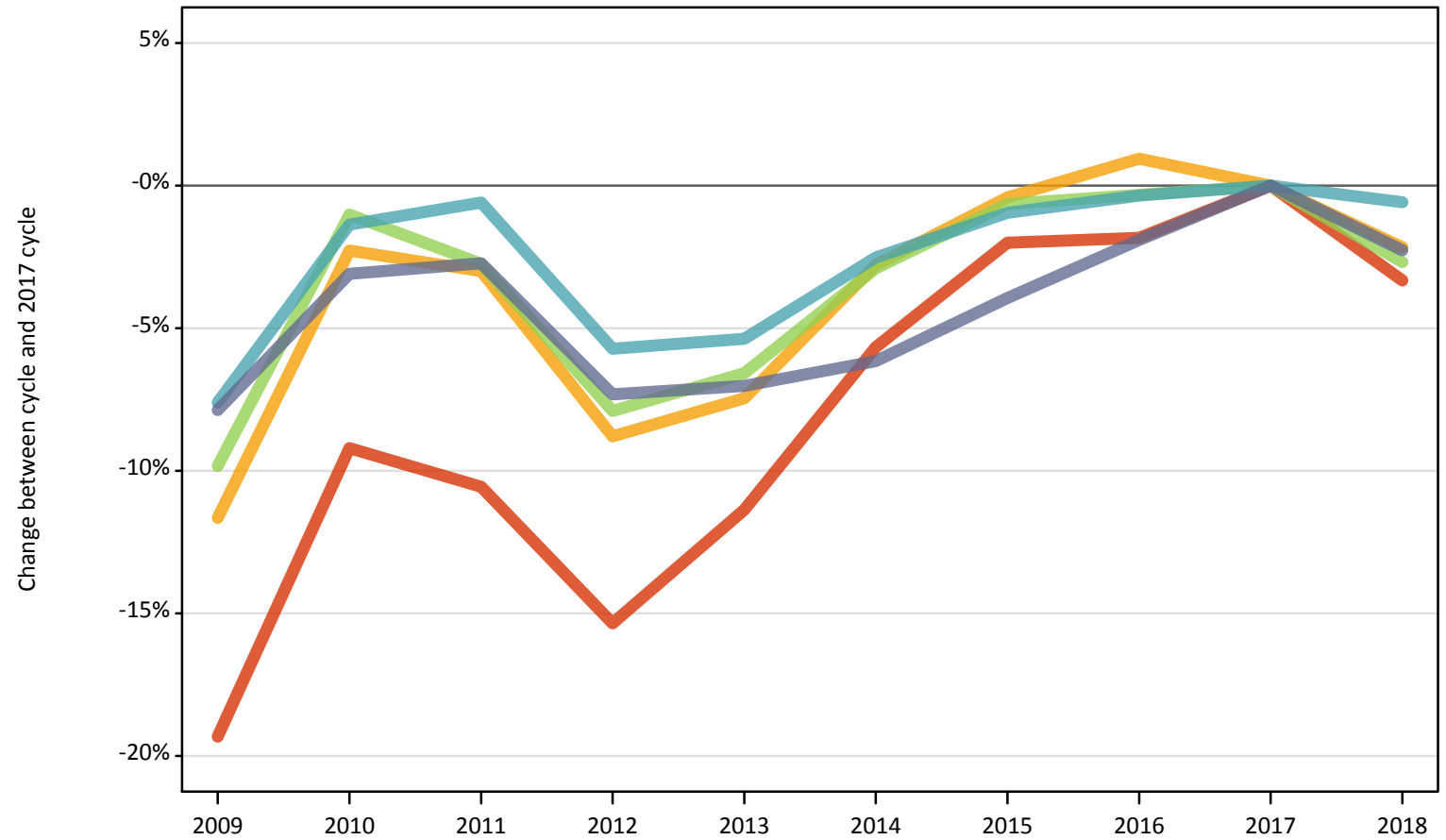
Difference between cycle and 2017 cycle

POLAR4 quintile of applicant		2009	2010	2011	2012	2013	2014	2015	2016	2017	2018
England	Quintile 1	-21%	-12%	-12%	-16%	-14%	-7%	-2%	-2%	0%	-3%
	Quintile 2	-12%	-6%	-6%	-10%	-9%	-4%	-0%	0%	0%	-2%
	Quintile 3	-11%	-4%	-5%	-9%	-8%	-5%	-1%	-0%	0%	-3%
	Quintile 4	-9%	-3%	-3%	-8%	-6%	-4%	-1%	-1%	0%	-1%
	Quintile 5	-7%	-3%	-3%	-6%	-7%	-6%	-3%	-1%	0%	-1%

Note: The percentage change is not recorded in the above table for groups with fewer than 10 applicants in that cycle or in the 2017 cycle.

F.12.11 18 year old applicants by POLAR4 quintile: England (Men)
Difference between cycle and 2017 cycle

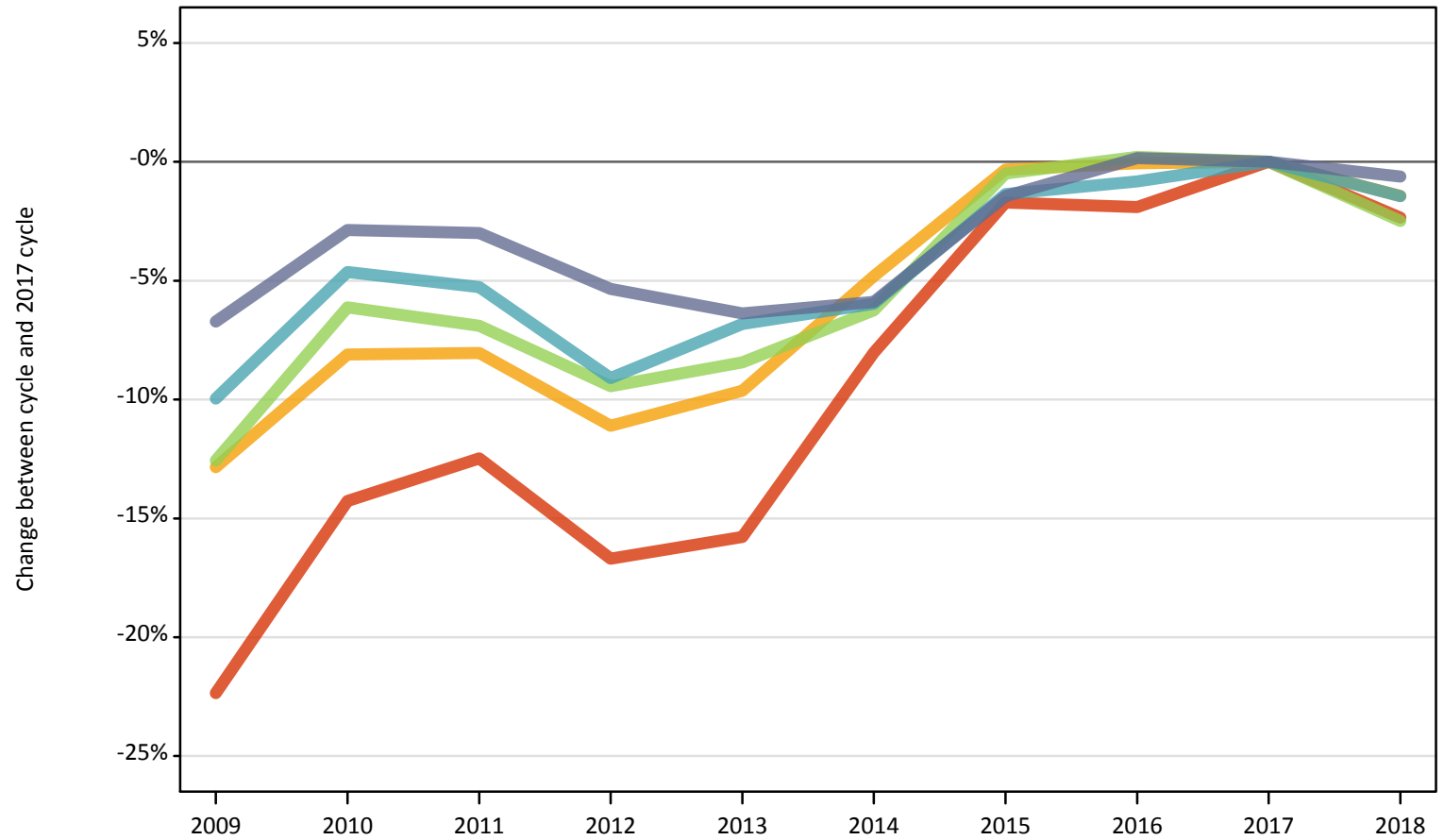
- Quintile 1
- Quintile 2
- Quintile 3
- Quintile 4
- Quintile 5



Note: The percentage change is not plotted in the above chart for groups with fewer than 500 applicants in any one cycle.

F.12.12 18 year old applicants by POLAR4 quintile: England (Women)
Difference between cycle and 2017 cycle

- Quintile 1
- Quintile 2
- Quintile 3
- Quintile 4
- Quintile 5



Note: The percentage change is not plotted in the above chart for groups with fewer than 500 applicants in any one cycle.

F.12.13 18 year old applicants by sex and POLAR4 quintile: England

Sex and POLAR4 quintile of applicant		2009	2010	2011	2012	2013	2014	2015	2016	2017	2018
Women	Quintile 1	12,120	13,380	13,660	13,010	13,150	14,360	15,350	15,320	15,610	15,250
	Quintile 2	18,110	19,100	19,110	18,480	18,780	19,780	20,720	20,770	20,780	20,490
	Quintile 3	21,840	23,450	23,260	22,630	22,880	23,420	24,860	25,030	24,980	24,360
	Quintile 4	26,860	28,450	28,260	27,120	27,800	28,050	29,430	29,590	29,830	29,400
	Quintile 5	36,990	38,510	38,460	37,530	37,120	37,310	39,080	39,710	39,650	39,400
Men	Quintile 1	8,290	9,330	9,190	8,700	9,110	9,700	10,070	10,090	10,280	9,940
	Quintile 2	12,950	14,330	14,220	13,370	13,570	14,250	14,600	14,800	14,660	14,340
	Quintile 3	16,810	18,450	18,130	17,170	17,410	18,100	18,520	18,580	18,640	18,140
	Quintile 4	21,630	23,100	23,280	22,080	22,160	22,820	23,190	23,330	23,420	23,280
	Quintile 5	32,560	34,250	34,380	32,750	32,860	33,160	33,950	34,670	35,340	34,540

F.12.14 18 year old applicants by sex and POLAR4 quintile: England

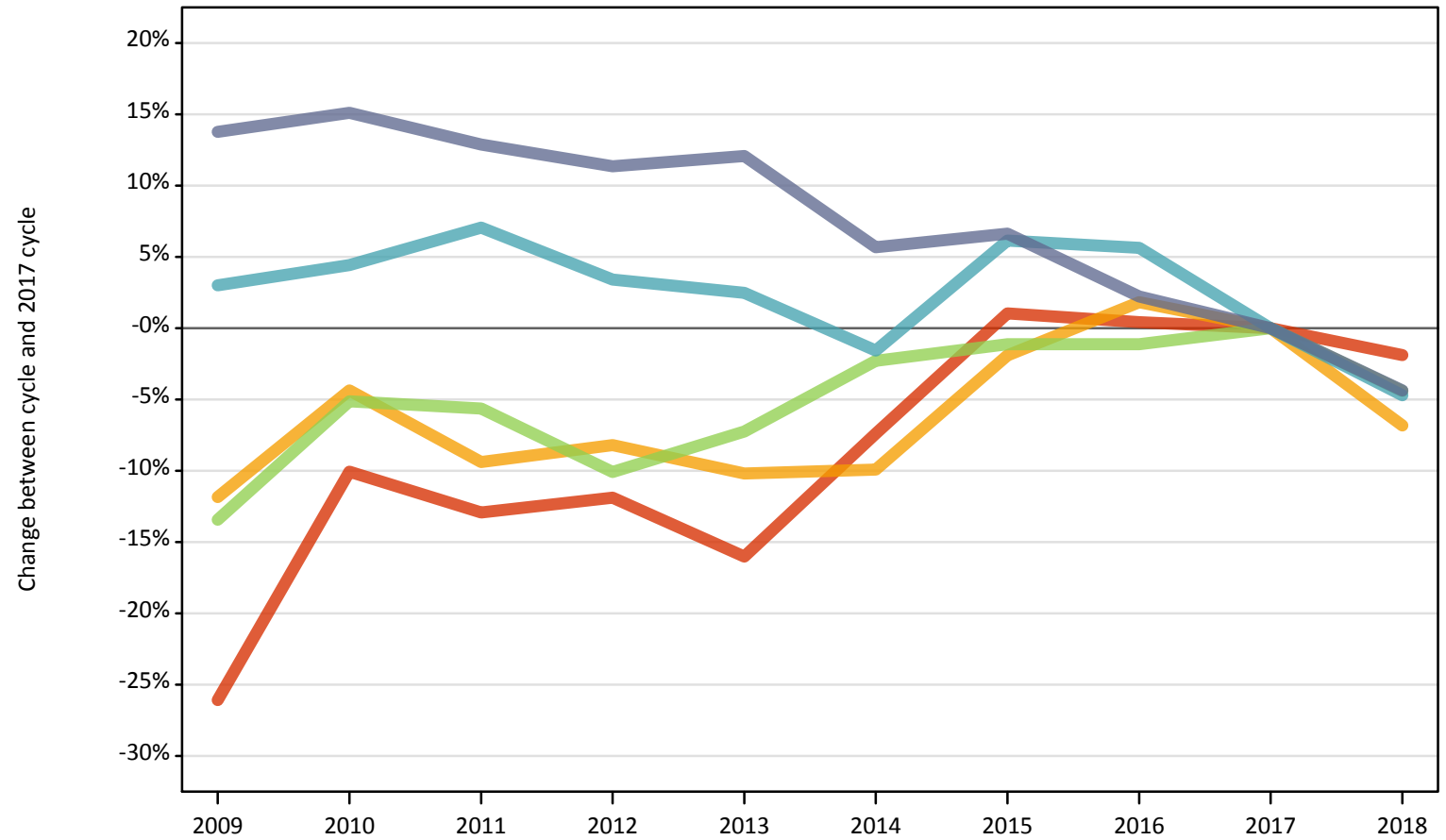
Difference between cycle and 2017 cycle

Sex and POLAR4 quintile of applicant		2009	2010	2011	2012	2013	2014	2015	2016	2017	2018
Women	Quintile 1	-22%	-14%	-12%	-17%	-16%	-8%	-2%	-2%	0%	-2%
	Quintile 2	-13%	-8%	-8%	-11%	-10%	-5%	-0%	-0%	0%	-1%
	Quintile 3	-13%	-6%	-7%	-9%	-8%	-6%	-0%	0%	0%	-2%
	Quintile 4	-10%	-5%	-5%	-9%	-7%	-6%	-1%	-1%	0%	-1%
	Quintile 5	-7%	-3%	-3%	-5%	-6%	-6%	-1%	0%	0%	-1%
Men	Quintile 1	-19%	-9%	-11%	-15%	-11%	-6%	-2%	-2%	0%	-3%
	Quintile 2	-12%	-2%	-3%	-9%	-7%	-3%	-0%	1%	0%	-2%
	Quintile 3	-10%	-1%	-3%	-8%	-7%	-3%	-1%	-0%	0%	-3%
	Quintile 4	-8%	-1%	-1%	-6%	-5%	-3%	-1%	-0%	0%	-1%
	Quintile 5	-8%	-3%	-3%	-7%	-7%	-6%	-4%	-2%	0%	-2%

Note: The percentage change is not recorded in the above table for groups with fewer than 10 applicants in that cycle or in the 2017 cycle.

F.12.15 18 year old applicants by POLAR4 quintile: Northern Ireland
Difference between cycle and 2017 cycle

- Quintile 1
- Quintile 2
- Quintile 3
- Quintile 4
- Quintile 5



Note: The percentage change is not plotted in the above chart for groups with fewer than 500 applicants in any one cycle.

F.12.16 18 year old applicants by POLAR4 quintile: Northern Ireland

POLAR4 quintile of applicant		2009	2010	2011	2012	2013	2014	2015	2016	2017	2018
Northern Ireland	Quintile 1	860	1,050	1,010	1,020	980	1,080	1,170	1,170	1,160	1,140
	Quintile 2	970	1,050	1,000	1,010	990	990	1,080	1,120	1,100	1,020
	Quintile 3	1,710	1,870	1,860	1,770	1,830	1,930	1,950	1,950	1,970	1,890
	Quintile 4	2,940	2,980	3,050	2,950	2,920	2,810	3,030	3,010	2,850	2,720
	Quintile 5	5,020	5,080	4,980	4,920	4,950	4,670	4,710	4,510	4,420	4,220

F.12.17 18 year old applicants by POLAR4 quintile: Northern Ireland

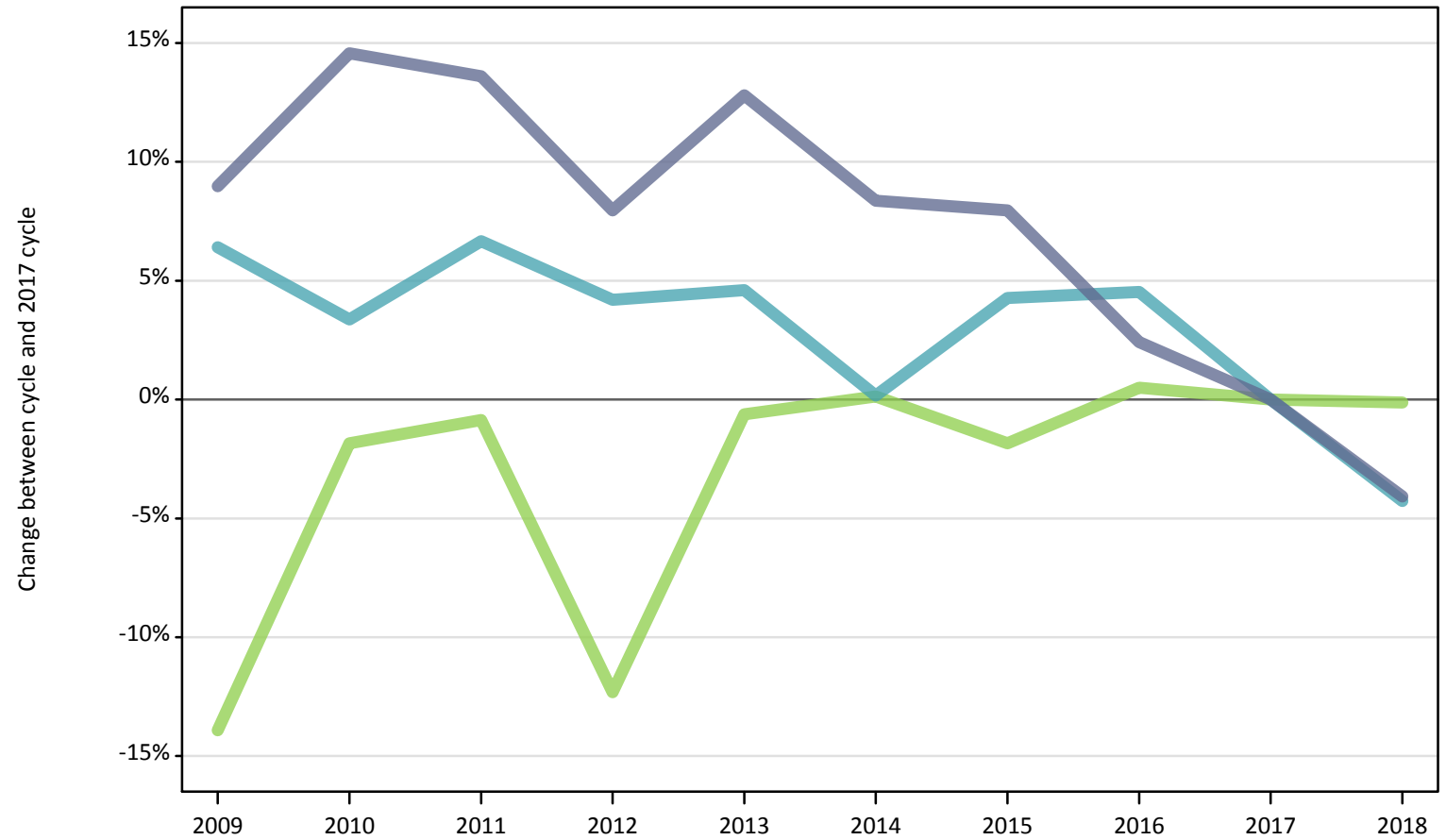
Difference between cycle and 2017 cycle

POLAR4 quintile of applicant		2009	2010	2011	2012	2013	2014	2015	2016	2017	2018
Northern Ireland	Quintile 1	-26%	-10%	-13%	-12%	-16%	-7%	1%	0%	0%	-2%
	Quintile 2	-12%	-4%	-9%	-8%	-10%	-10%	-2%	2%	0%	-7%
	Quintile 3	-13%	-5%	-6%	-10%	-7%	-2%	-1%	-1%	0%	-4%
	Quintile 4	3%	4%	7%	3%	2%	-2%	6%	6%	0%	-5%
	Quintile 5	14%	15%	13%	11%	12%	6%	7%	2%	0%	-4%

Note: The percentage change is not recorded in the above table for groups with fewer than 10 applicants in that cycle or in the 2017 cycle.

F.12.18 18 year old applicants by POLAR4 quintile: Northern Ireland (Men)
Difference between cycle and 2017 cycle

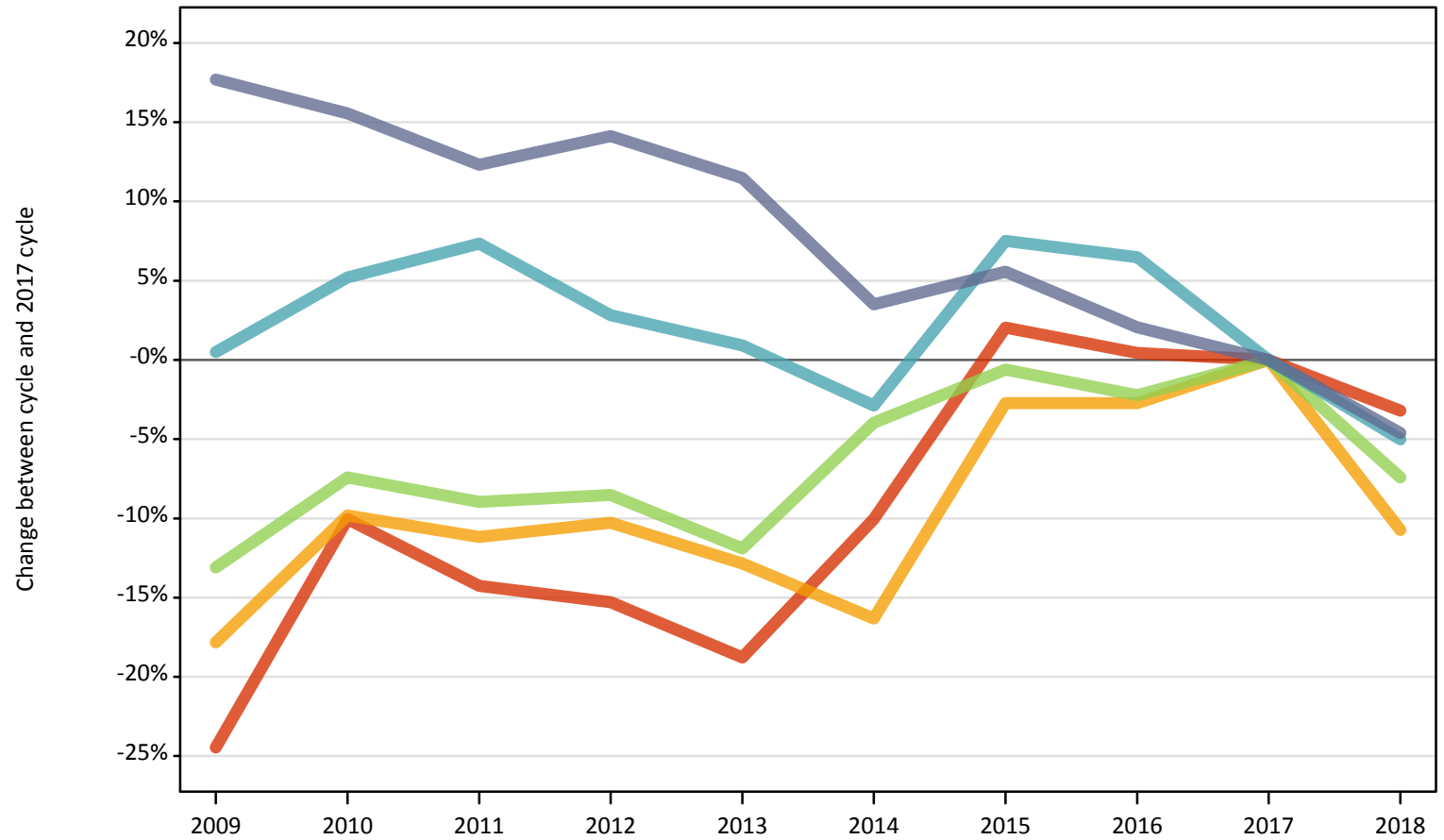
- Quintile 1
- Quintile 2
- Quintile 3
- Quintile 4
- Quintile 5



Note: The percentage change is not plotted in the above chart for groups with fewer than 500 applicants in any one cycle.

F.12.19 18 year old applicants by POLAR4 quintile: Northern Ireland (Women)
Difference between cycle and 2017 cycle

- Quintile 1
- Quintile 2
- Quintile 3
- Quintile 4
- Quintile 5



Note: The percentage change is not plotted in the above chart for groups with fewer than 500 applicants in any one cycle.

F.12.20 18 year old applicants by sex and POLAR4 quintile: Northern Ireland

Sex and POLAR4 quintile of applicant		2009	2010	2011	2012	2013	2014	2015	2016	2017	2018
Women	Quintile 1	520	620	590	580	560	620	700	690	690	670
	Quintile 2	540	600	590	590	580	550	640	640	660	590
	Quintile 3	1,010	1,080	1,060	1,060	1,020	1,120	1,150	1,140	1,160	1,080
	Quintile 4	1,640	1,720	1,760	1,680	1,650	1,590	1,760	1,740	1,640	1,550
	Quintile 5	2,860	2,810	2,730	2,770	2,710	2,520	2,570	2,480	2,430	2,320
Men	Quintile 1	340	430	420	440	420	460	470	480	480	480
	Quintile 2	430	450	410	420	410	440	430	480	440	430
	Quintile 3	700	800	810	710	810	810	800	820	810	810
	Quintile 4	1,300	1,260	1,300	1,270	1,270	1,220	1,270	1,270	1,220	1,170
	Quintile 5	2,160	2,270	2,260	2,140	2,240	2,150	2,140	2,030	1,990	1,900

F.12.21 18 year old applicants by sex and POLAR4 quintile: Northern Ireland

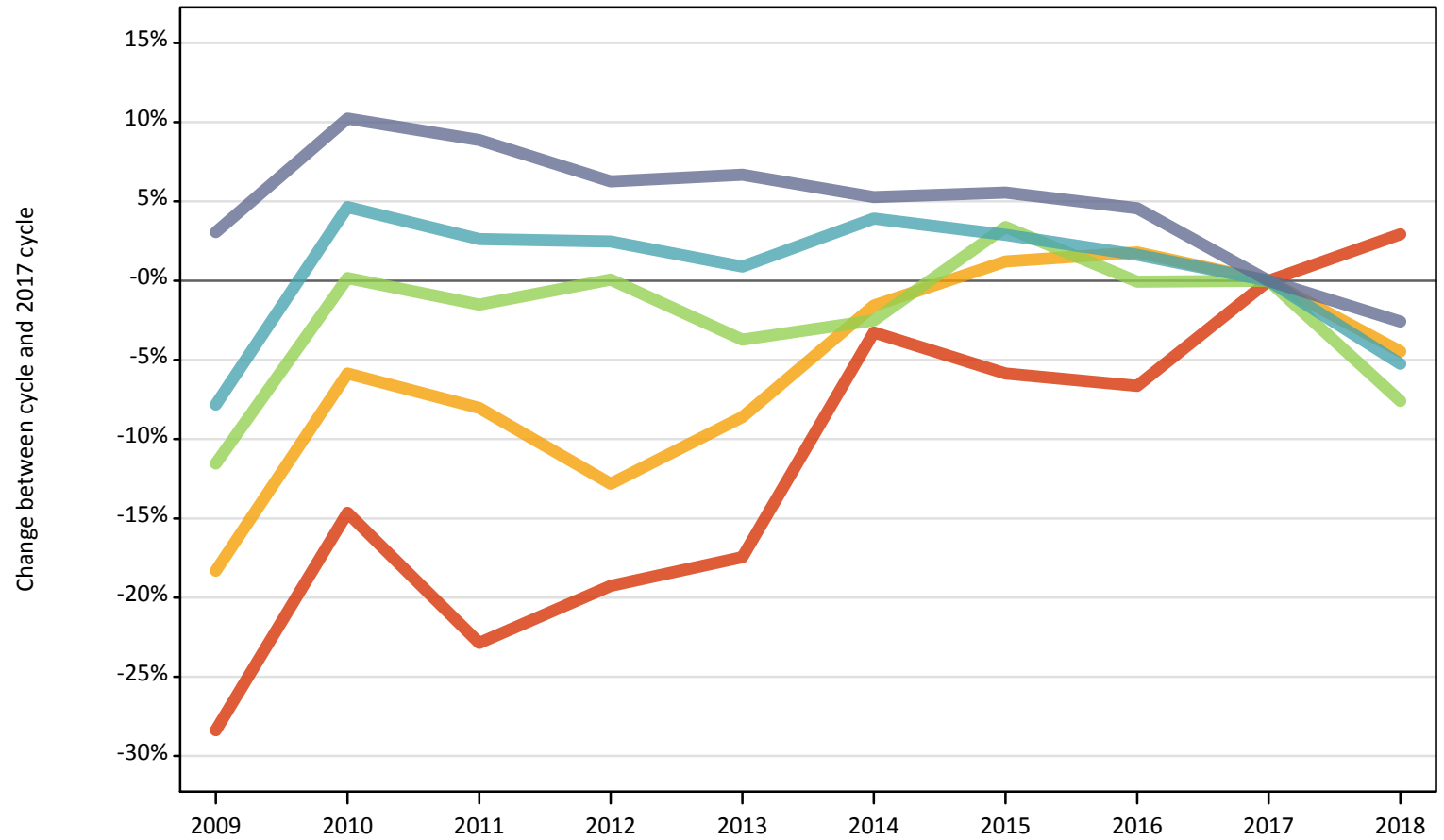
Difference between cycle and 2017 cycle

Sex and POLAR4 quintile of applicant		2009	2010	2011	2012	2013	2014	2015	2016	2017	2018
Women	Quintile 1	-24%	-10%	-14%	-15%	-19%	-10%	2%	0%	0%	-3%
	Quintile 2	-18%	-10%	-11%	-10%	-13%	-16%	-3%	-3%	0%	-11%
	Quintile 3	-13%	-7%	-9%	-9%	-12%	-4%	-1%	-2%	0%	-7%
	Quintile 4	0%	5%	7%	3%	1%	-3%	8%	6%	0%	-5%
	Quintile 5	18%	16%	12%	14%	11%	3%	6%	2%	0%	-5%
Men	Quintile 1	-28%	-10%	-11%	-7%	-12%	-4%	-0%	0%	0%	0%
	Quintile 2	-3%	4%	-7%	-5%	-6%	-0%	-1%	9%	0%	-1%
	Quintile 3	-14%	-2%	-1%	-12%	-1%	0%	-2%	0%	0%	-0%
	Quintile 4	6%	3%	7%	4%	5%	0%	4%	5%	0%	-4%
	Quintile 5	9%	15%	14%	8%	13%	8%	8%	2%	0%	-4%

Note: The percentage change is not recorded in the above table for groups with fewer than 10 applicants in that cycle or in the 2017 cycle.

F.12.22 18 year old applicants by POLAR4 quintile: Scotland
Difference between cycle and 2017 cycle

- Quintile 1
- Quintile 2
- Quintile 3
- Quintile 4
- Quintile 5



Note: The percentage change is not plotted in the above chart for groups with fewer than 500 applicants in any one cycle.

F.12.23 18 year old applicants by POLAR4 quintile: Scotland

POLAR4 quintile of applicant		2009	2010	2011	2012	2013	2014	2015	2016	2017	2018
Scotland	Quintile 1	640	760	690	720	730	860	840	830	890	910
	Quintile 2	1,610	1,850	1,810	1,710	1,800	1,940	1,990	2,000	1,970	1,880
	Quintile 3	2,800	3,170	3,110	3,160	3,040	3,080	3,270	3,160	3,160	2,920
	Quintile 4	4,070	4,620	4,530	4,520	4,450	4,590	4,540	4,490	4,420	4,180
	Quintile 5	8,610	9,210	9,090	8,880	8,910	8,790	8,820	8,730	8,350	8,140

F.12.24 18 year old applicants by POLAR4 quintile: Scotland

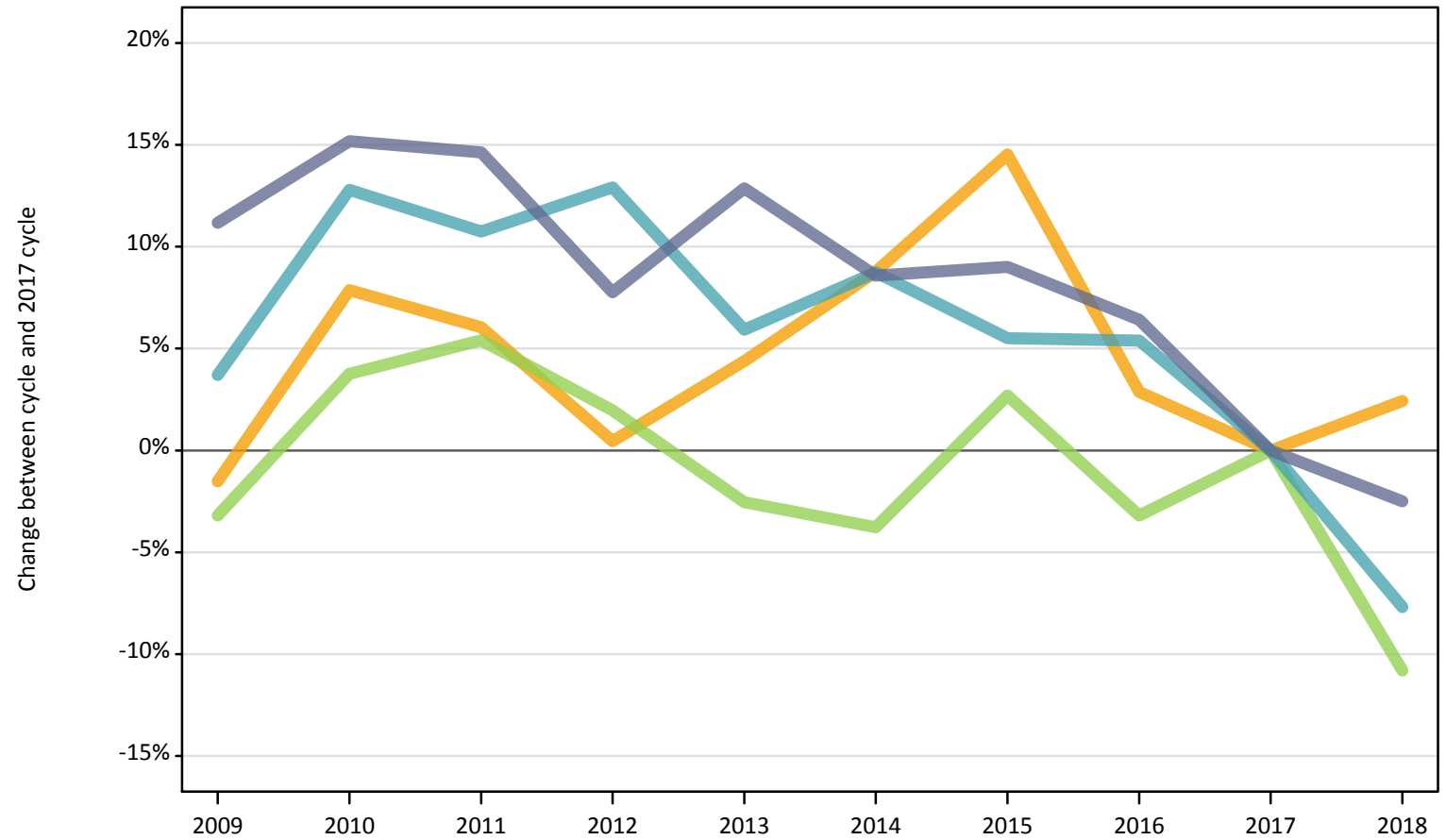
Difference between cycle and 2017 cycle

POLAR4 quintile of applicant		2009	2010	2011	2012	2013	2014	2015	2016	2017	2018
Scotland	Quintile 1	-28%	-15%	-23%	-19%	-17%	-3%	-6%	-7%	0%	3%
	Quintile 2	-18%	-6%	-8%	-13%	-9%	-2%	1%	2%	0%	-4%
	Quintile 3	-12%	0%	-2%	0%	-4%	-2%	3%	-0%	0%	-8%
	Quintile 4	-8%	5%	3%	2%	1%	4%	3%	2%	0%	-5%
	Quintile 5	3%	10%	9%	6%	7%	5%	6%	5%	0%	-3%

Note: The percentage change is not recorded in the above table for groups with fewer than 10 applicants in that cycle or in the 2017 cycle.

F.12.25 18 year old applicants by POLAR4 quintile: Scotland (Men)
Difference between cycle and 2017 cycle

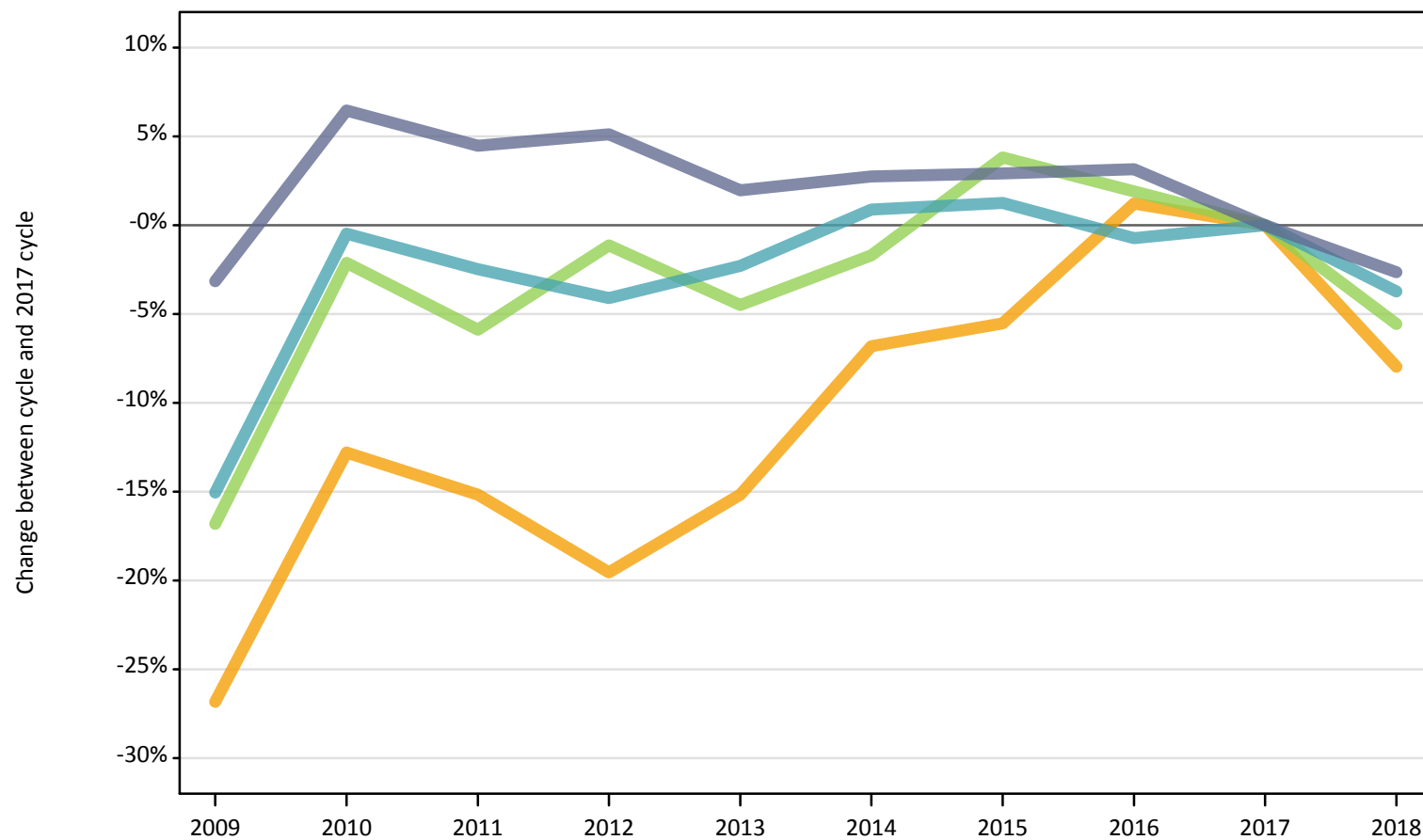
- Quintile 1
- Quintile 2
- Quintile 3
- Quintile 4
- Quintile 5



Note: The percentage change is not plotted in the above chart for groups with fewer than 500 applicants in any one cycle.

F.12.26 18 year old applicants by POLAR4 quintile: Scotland (Women)
Difference between cycle and 2017 cycle

- Quintile 1
- Quintile 2
- Quintile 3
- Quintile 4
- Quintile 5



Note: The percentage change is not plotted in the above chart for groups with fewer than 500 applicants in any one cycle.

F.12.27 18 year old applicants by sex and POLAR4 quintile: Scotland

Sex and POLAR4 quintile of applicant		2009	2010	2011	2012	2013	2014	2015	2016	2017	2018
Women	Quintile 1	380	460	420	430	440	550	540	560	570	590
	Quintile 2	960	1,140	1,110	1,050	1,110	1,220	1,230	1,320	1,310	1,200
	Quintile 3	1,610	1,900	1,830	1,920	1,850	1,910	2,010	1,980	1,940	1,830
	Quintile 4	2,300	2,700	2,640	2,600	2,650	2,740	2,750	2,690	2,710	2,610
	Quintile 5	4,590	5,040	4,950	4,980	4,830	4,870	4,880	4,890	4,740	4,610
Men	Quintile 1	260	300	270	290	290	310	300	270	320	330
	Quintile 2	650	710	700	660	690	720	760	680	660	680
	Quintile 3	1,180	1,270	1,290	1,250	1,190	1,180	1,260	1,180	1,220	1,090
	Quintile 4	1,770	1,920	1,890	1,920	1,810	1,850	1,800	1,800	1,700	1,570
	Quintile 5	4,020	4,170	4,150	3,900	4,080	3,930	3,940	3,850	3,620	3,530

F.12.28 18 year old applicants by sex and POLAR4 quintile: Scotland

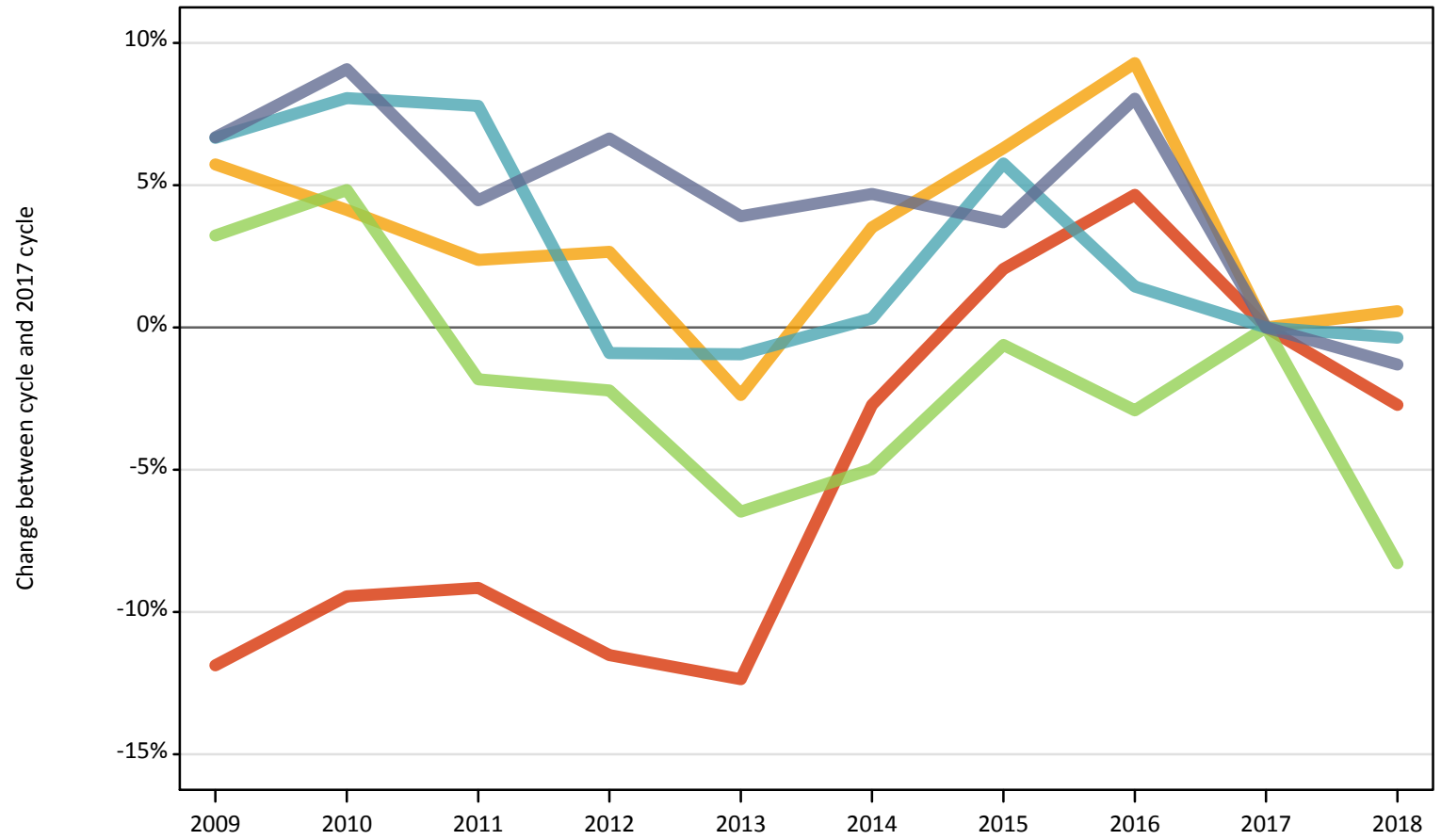
Difference between cycle and 2017 cycle

Sex and POLAR4 quintile of applicant		2009	2010	2011	2012	2013	2014	2015	2016	2017	2018
Women	Quintile 1	-34%	-19%	-26%	-24%	-23%	-3%	-6%	-3%	0%	3%
	Quintile 2	-27%	-13%	-15%	-20%	-15%	-7%	-6%	1%	0%	-8%
	Quintile 3	-17%	-2%	-6%	-1%	-4%	-2%	4%	2%	0%	-6%
	Quintile 4	-15%	-0%	-2%	-4%	-2%	1%	1%	-1%	0%	-4%
	Quintile 5	-3%	6%	4%	5%	2%	3%	3%	3%	0%	-3%
Men	Quintile 1	-19%	-7%	-17%	-10%	-8%	-3%	-6%	-14%	0%	3%
	Quintile 2	-2%	8%	6%	0%	4%	9%	15%	3%	0%	2%
	Quintile 3	-3%	4%	5%	2%	-3%	-4%	3%	-3%	0%	-11%
	Quintile 4	4%	13%	11%	13%	6%	9%	6%	5%	0%	-8%
	Quintile 5	11%	15%	15%	8%	13%	9%	9%	6%	0%	-2%

Note: The percentage change is not recorded in the above table for groups with fewer than 10 applicants in that cycle or in the 2017 cycle.

F.12.29 18 year old applicants by POLAR4 quintile: Wales
Difference between cycle and 2017 cycle

- Quintile 1
- Quintile 2
- Quintile 3
- Quintile 4
- Quintile 5



Note: The percentage change is not plotted in the above chart for groups with fewer than 500 applicants in any one cycle.

F.12.30 18 year old applicants by POLAR4 quintile: Wales

POLAR4 quintile of applicant		2009	2010	2011	2012	2013	2014	2015	2016	2017	2018
Wales	Quintile 1	1,460	1,500	1,500	1,460	1,450	1,610	1,690	1,730	1,650	1,610
	Quintile 2	2,590	2,550	2,500	2,510	2,390	2,530	2,600	2,670	2,450	2,460
	Quintile 3	2,840	2,890	2,700	2,690	2,570	2,620	2,740	2,670	2,750	2,520
	Quintile 4	2,370	2,400	2,400	2,200	2,200	2,230	2,350	2,250	2,220	2,210
	Quintile 5	2,460	2,510	2,410	2,460	2,390	2,410	2,390	2,490	2,300	2,270

F.12.31 18 year old applicants by POLAR4 quintile: Wales

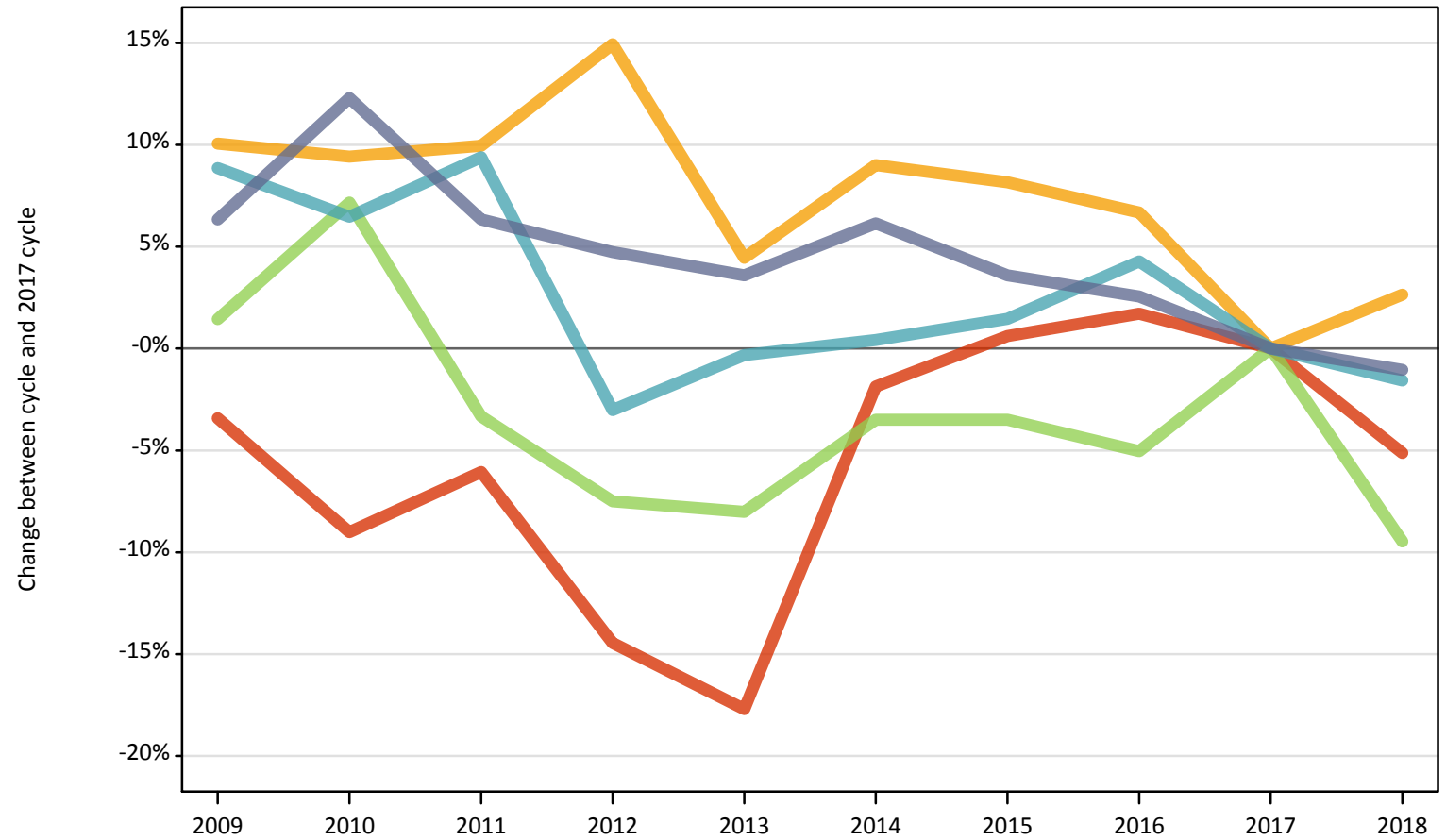
Difference between cycle and 2017 cycle

POLAR4 quintile of applicant		2009	2010	2011	2012	2013	2014	2015	2016	2017	2018
Wales	Quintile 1	-12%	-9%	-9%	-12%	-12%	-3%	2%	5%	0%	-3%
	Quintile 2	6%	4%	2%	3%	-2%	4%	6%	9%	0%	1%
	Quintile 3	3%	5%	-2%	-2%	-6%	-5%	-1%	-3%	0%	-8%
	Quintile 4	7%	8%	8%	-1%	-1%	0%	6%	1%	0%	-0%
	Quintile 5	7%	9%	4%	7%	4%	5%	4%	8%	0%	-1%

Note: The percentage change is not recorded in the above table for groups with fewer than 10 applicants in that cycle or in the 2017 cycle.

F.12.32 18 year old applicants by POLAR4 quintile: Wales (Men)
 Difference between cycle and 2017 cycle

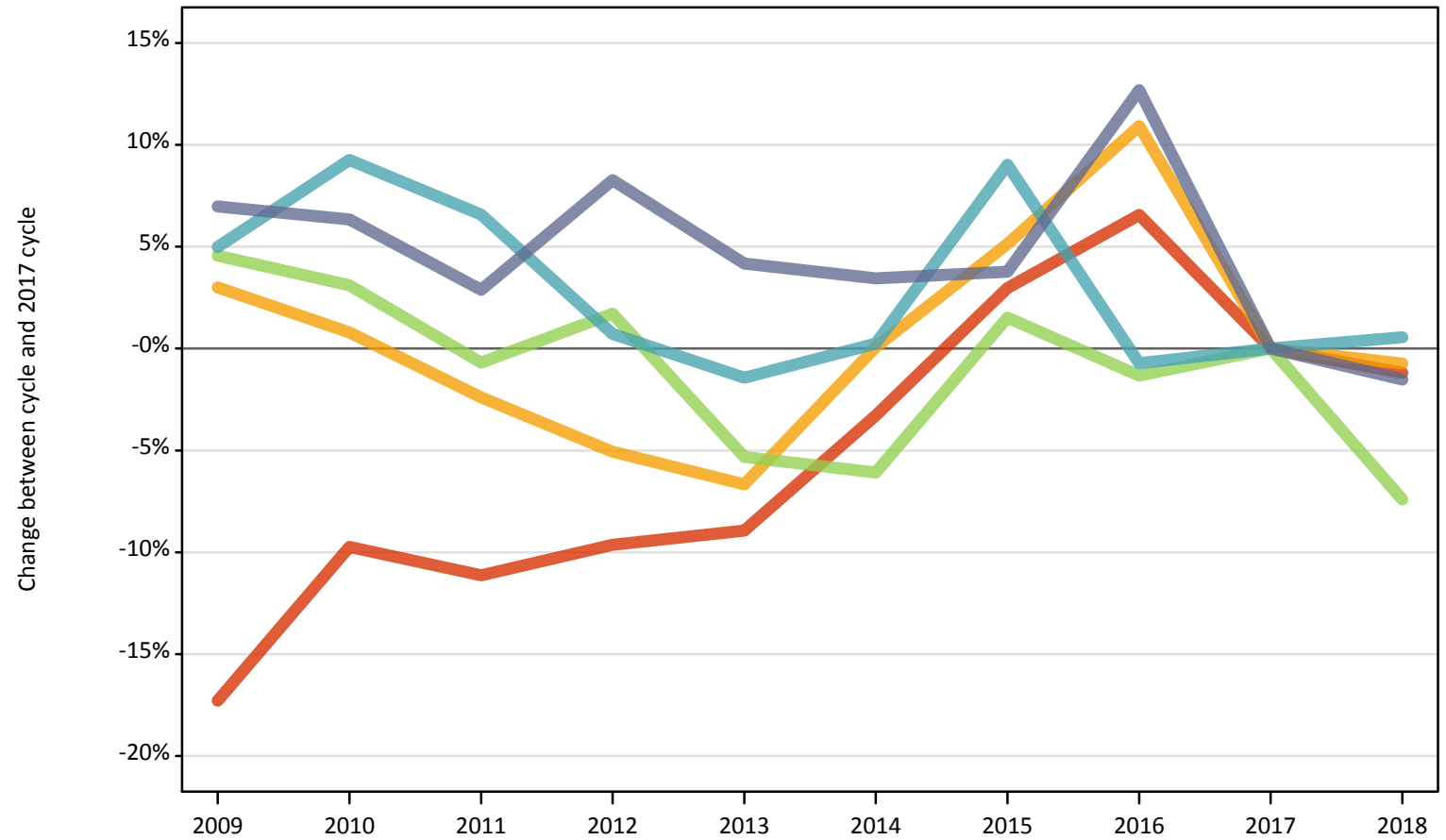
- Quintile 1
- Quintile 2
- Quintile 3
- Quintile 4
- Quintile 5



Note: The percentage change is not plotted in the above chart for groups with fewer than 500 applicants in any one cycle.

F.12.33 18 year old applicants by POLAR4 quintile: Wales (Women)
Difference between cycle and 2017 cycle

- Quintile 1
- Quintile 2
- Quintile 3
- Quintile 4
- Quintile 5



Note: The percentage change is not plotted in the above chart for groups with fewer than 500 applicants in any one cycle.

F.12.34 18 year old applicants by sex and POLAR4 quintile: Wales

Sex and POLAR4 quintile of applicant		2009	2010	2011	2012	2013	2014	2015	2016	2017	2018
Women	Quintile 1	830	910	900	910	920	970	1,040	1,070	1,010	1,000
	Quintile 2	1,550	1,510	1,470	1,430	1,400	1,500	1,580	1,670	1,500	1,490
	Quintile 3	1,650	1,630	1,570	1,610	1,500	1,480	1,600	1,560	1,580	1,460
	Quintile 4	1,330	1,380	1,350	1,270	1,250	1,270	1,380	1,250	1,260	1,270
	Quintile 5	1,330	1,330	1,280	1,350	1,300	1,290	1,290	1,400	1,250	1,230
Men	Quintile 1	620	590	610	550	530	630	650	660	640	610
	Quintile 2	1,040	1,030	1,040	1,090	990	1,030	1,020	1,010	940	970
	Quintile 3	1,190	1,260	1,130	1,090	1,080	1,130	1,130	1,110	1,170	1,060
	Quintile 4	1,040	1,020	1,050	930	960	960	970	1,000	960	940
	Quintile 5	1,120	1,190	1,120	1,110	1,100	1,120	1,100	1,080	1,060	1,050

F.12.35 18 year old applicants by sex and POLAR4 quintile: Wales

Difference between cycle and 2017 cycle

Sex and POLAR4 quintile of applicant		2009	2010	2011	2012	2013	2014	2015	2016	2017	2018
Women	Quintile 1	-17%	-10%	-11%	-10%	-9%	-3%	3%	7%	0%	-1%
	Quintile 2	3%	1%	-2%	-5%	-7%	0%	5%	11%	0%	-1%
	Quintile 3	5%	3%	-1%	2%	-5%	-6%	2%	-1%	0%	-7%
	Quintile 4	5%	9%	7%	1%	-1%	0%	9%	-1%	0%	1%
	Quintile 5	7%	6%	3%	8%	4%	3%	4%	13%	0%	-2%
Men	Quintile 1	-3%	-9%	-6%	-14%	-18%	-2%	1%	2%	0%	-5%
	Quintile 2	10%	9%	10%	15%	4%	9%	8%	7%	0%	3%
	Quintile 3	1%	7%	-3%	-8%	-8%	-3%	-3%	-5%	0%	-9%
	Quintile 4	9%	6%	9%	-3%	-0%	0%	1%	4%	0%	-2%
	Quintile 5	6%	12%	6%	5%	4%	6%	4%	3%	0%	-1%

Note: The percentage change is not recorded in the above table for groups with fewer than 10 applicants in that cycle or in the 2017 cycle.

F.12.36 Technical notes and definitions

Applicants have been able to submit applications for all 2018 courses since early September.

Applicants who submit their applications to UCAS by the January deadline are considered 'on time' applicants for the large majority of courses offered through UCAS. Some art and design courses have a later deadline of 24 March. Almost all main scheme applications have been received by the 24 March deadline.

This statistical release covers all Main Scheme applicants who submit their applications to UCAS by the March deadline, including those who have applied for courses with a 15 October or January deadline. Counts of RPAs (records of prior acceptance) are not included.

Counts of the number of applicants reported have been rounded to the nearest 10 applicants, this may result in instances where totals do not equal the sum of the components. Proportional changes have been rounded to the nearest whole percentage point.

Age

This statistical release uses country-specific age definitions which align with the cut off points for school/college cohorts within the different administrations of the UK. For England and Wales ages are defined on the 31 August, for Northern Ireland on the 1 July and for Scotland on the 28 February the following year. Defining ages in this way matches the assignment of children to school cohorts. For applicants outside of the UK the cohort cut off for England and Wales has been used.

Applicant

A person who has made an application in the UCAS system during the cycle reported (including applications for deferred entry). Records of prior acceptance (RPAs) are excluded.

Application

An application to a course at a provider made by an applicant in the UCAS main scheme. Applicants may make up to five main scheme applications.

Country of provider

An applicant may be counted once for each provider country they have applied to in the main scheme. If an applicant has applied to providers in multiple countries then the applicant is counted once within each country of provider applied to.

Domicile

Declared area of permanent residence. The Channel Islands and the Isle of Man have been assigned as 'Not EU'.

Ethnic group

High level grouping of ethnic origin as declared by the applicant: 'Asian', 'Black', 'Mixed', 'White', 'Other', 'Unknown'.

First time applicant

An applicant that did not apply to the UCAS scheme in the previous cycle.

Main scheme

The main UCAS application scheme through which up to five providers/courses can be applied to. This opens in September and closes to new applications on 30 June the following year.

Reapplicant

An applicant that applied to the UCAS scheme in the previous cycle.

Sex

As declared by the applicant.

SIMD 2016

Scottish Index of Multiple Deprivation identifies small area concentrations of multiple deprivation across all of Scotland, providing a relative measure of deprivation among small areas (data zones). In this report, the SIMD 2016 has been used to group areas in each year in the times series.

POLAR3

Developed by HEFCE and classifies small areas across the UK into five groups, according to their level of young participation in HE. Each of these groups represents around 20 per cent of young people, and is ranked from quintile 1 (areas with the lowest young participation rates, considered as the most disadvantaged) to quintile 5 (highest young participation rates, considered most advantaged).

POLAR4

Developed by HEFCE and classifies small areas across the UK into five groups, according to their level of young participation in HE. Each of these groups represents around 20 per cent of young people, and is ranked from quintile 1 (areas with the lowest young participation rates, considered as the most disadvantaged) to quintile 5 (highest young participation rates, considered most advantaged). POLAR4 is the most recent version of the POLAR classification, and is available for the first time in UCAS? reporting since its launch in 2017.

Tariff Group of provider

Providers are grouped as higher, medium or lower tariff based on their average levels of attainment of their accepted applicants (summarised through UCAS Tariff points) in recent cycles. Each group of providers accounted for around a third of all UK 18 year old acceptances in recent cycles.

Subject group

The JACS3 classification used to classify courses into subject groups.