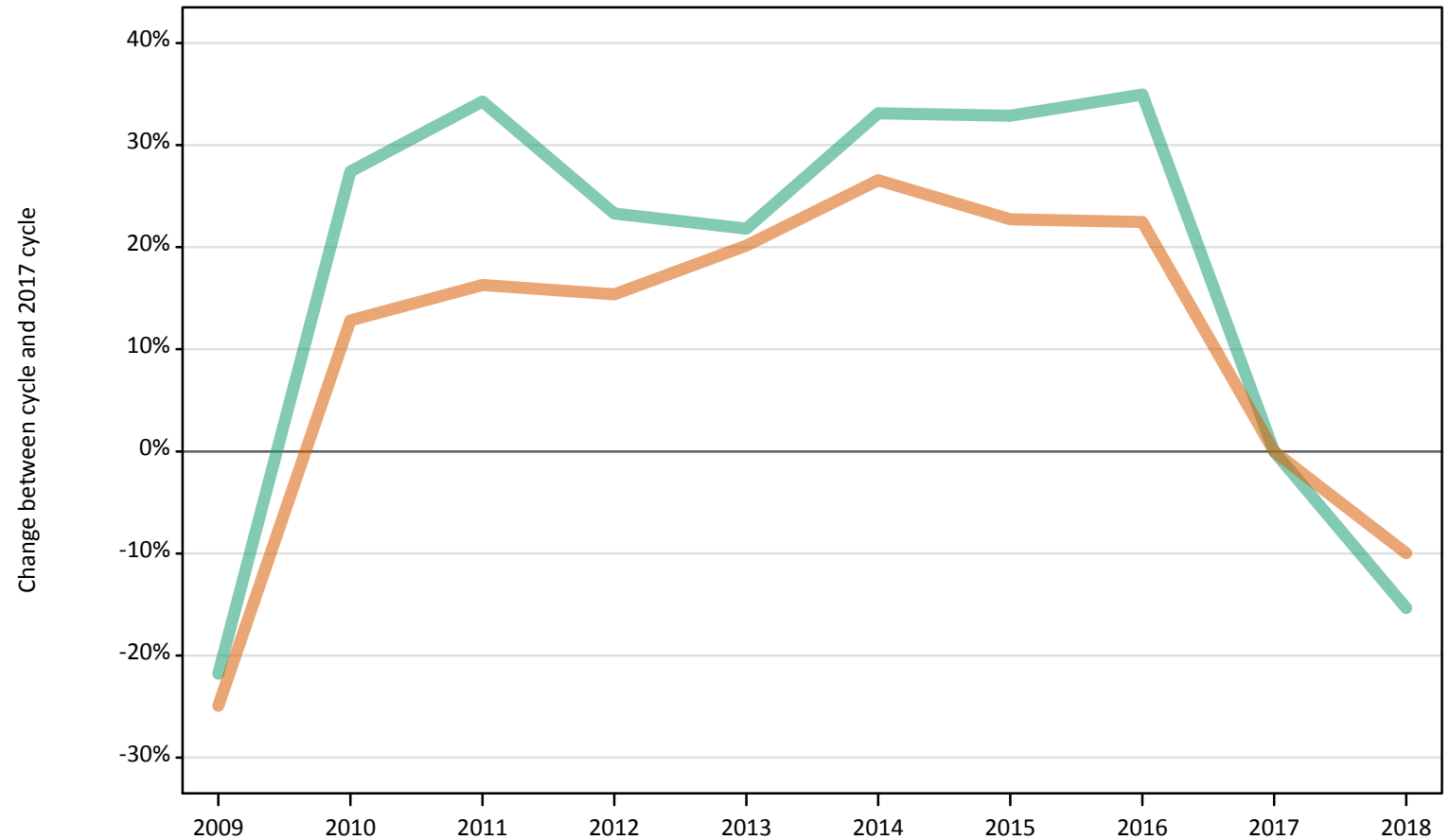


March Deadline Analysis: Sex and age

Nursing applicants by sex and age at the 24 March deadline

FB.2.1 Nursing applicants by sex: All domiciles
Difference between cycle and 2017 cycle

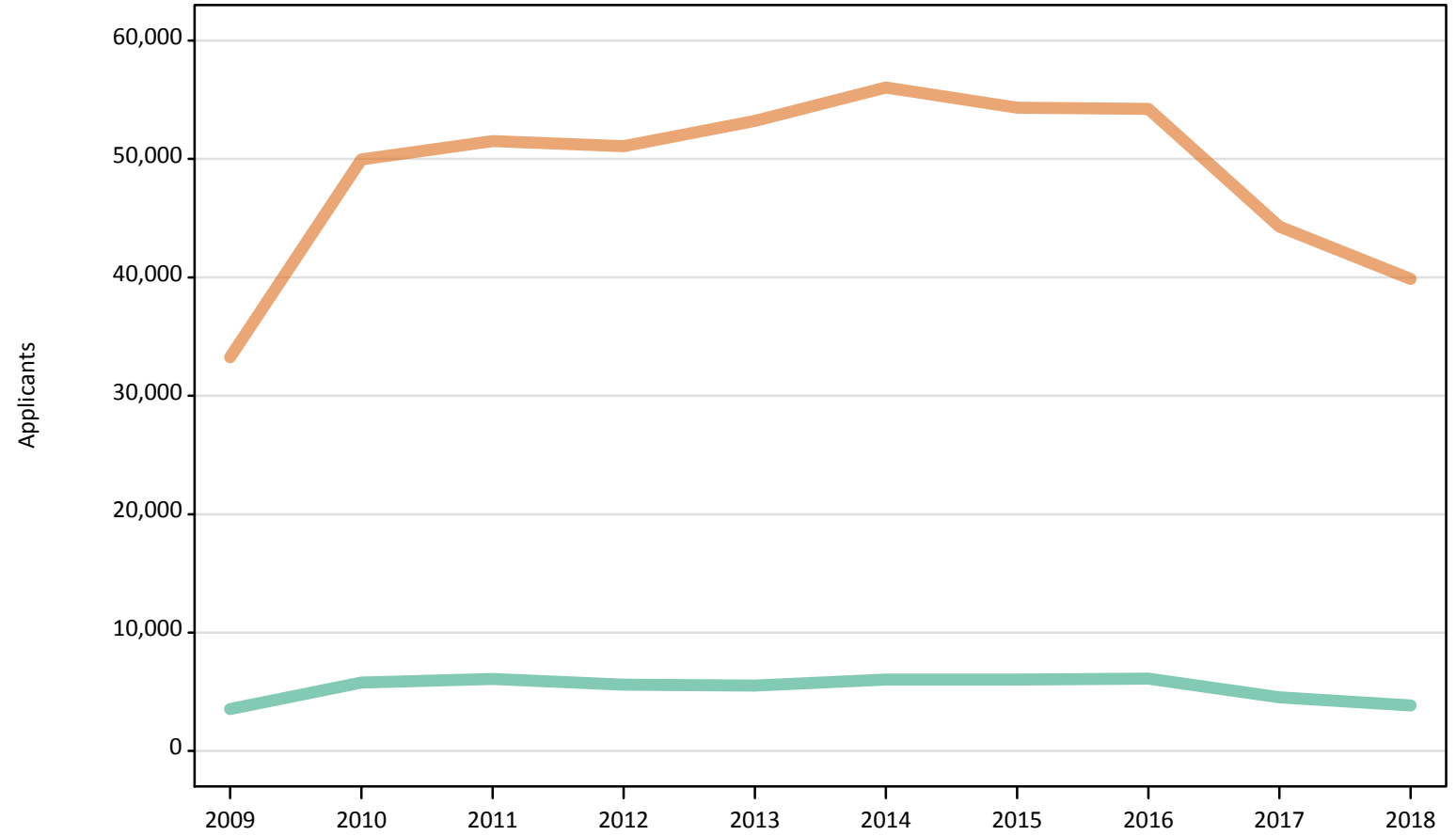
Men
Women



Note: The percentage change is not plotted in the above chart for groups with fewer than 500 applicants in any one cycle.

FB.2.2 Nursing applicants by sex: All domiciles

Men
Women



FB.2.3 Nursing applicants by age and sex: All domiciles

Age group and sex		2009	2010	2011	2012	2013	2014	2015	2016	2017	2018
Under 18	Women	200	370	240	130	140	150	120	130	120	100
	Men	20	30	10	10	10	10	10	10	10	10
18	Women	8,130	10,550	10,790	11,390	11,710	11,850	12,280	12,020	11,000	10,690
	Men	390	570	580	540	530	560	560	560	500	540
19	Women	3,950	5,760	6,270	5,910	6,640	6,950	6,590	6,710	5,570	5,050
	Men	290	410	450	410	450	460	480	450	370	350
20-24	Women	8,630	13,300	13,690	13,820	14,530	15,500	14,530	13,670	10,890	9,510
	Men	890	1,330	1,430	1,310	1,270	1,410	1,320	1,250	910	820
25-29	Women	4,520	7,270	7,640	7,530	7,910	8,520	8,180	8,250	6,140	5,180
	Men	620	1,020	1,030	940	1,000	1,030	980	980	720	570
30-34	Women	2,970	4,810	5,110	4,940	5,100	5,300	4,960	5,180	4,040	3,580
	Men	420	810	870	780	760	790	760	800	510	400
35 and over	Women	4,860	7,900	7,750	7,360	7,190	7,770	7,680	8,290	6,530	5,760
	Men	920	1,610	1,720	1,600	1,510	1,790	1,910	2,080	1,510	1,160
All ages	Women	33,250	49,960	51,490	51,080	53,200	56,040	54,340	54,230	44,280	39,860
	Men	3,550	5,780	6,090	5,590	5,530	6,040	6,030	6,120	4,540	3,840

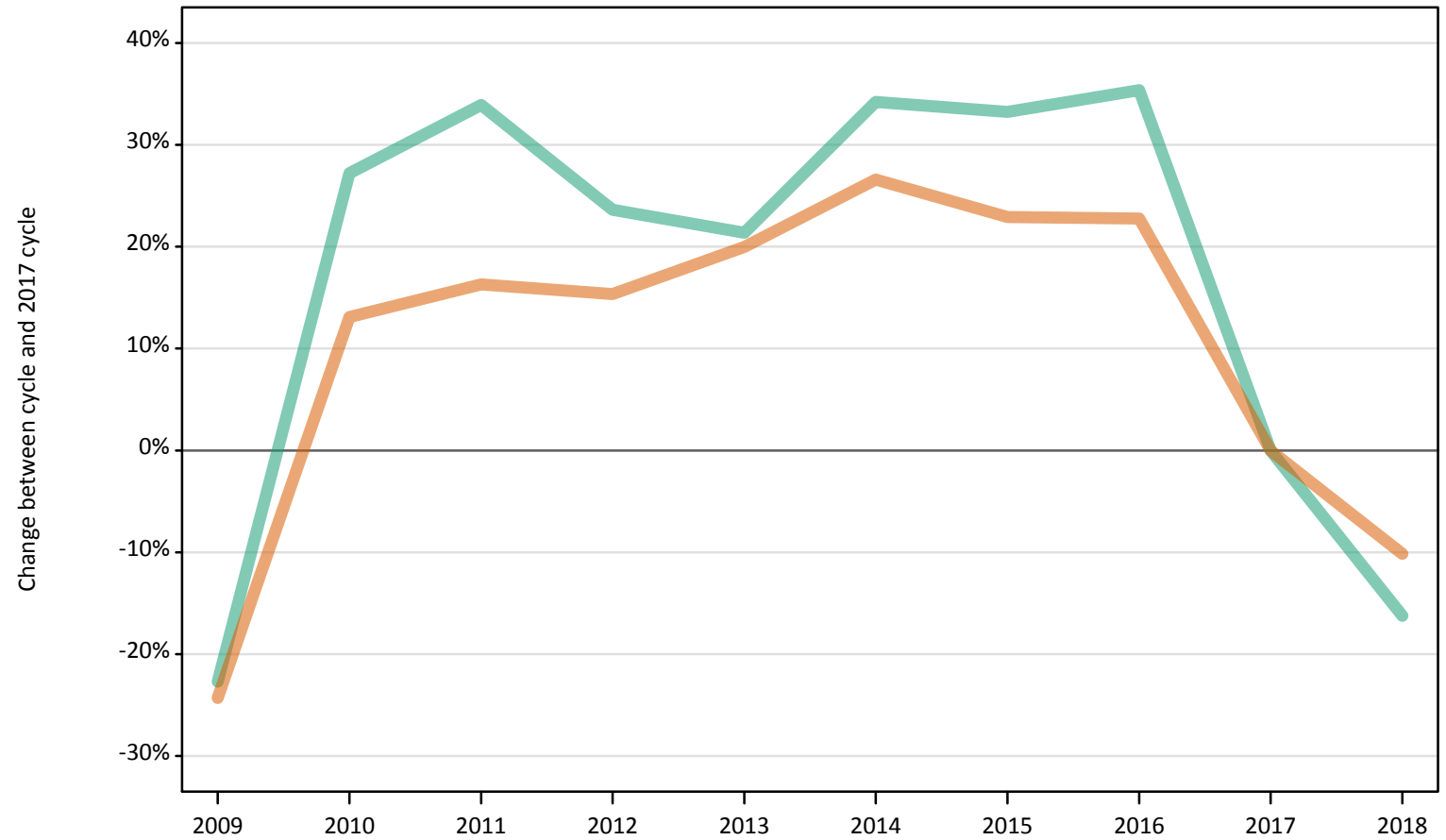
FB.2.4 Nursing applicants by age and sex: All domiciles
 Difference between cycle and 2017 cycle

Age group and sex		2009	2010	2011	2012	2013	2014	2015	2016	2017	2018
Under 18	Women	59%	199%	93%	7%	14%	22%	0%	2%	0%	-17%
	Men	78%	200%	44%	22%	0%	-22%	44%	-33%	0%	-33%
18	Women	-26%	-4%	-2%	4%	6%	8%	12%	9%	0%	-3%
	Men	-21%	15%	16%	8%	6%	13%	13%	12%	0%	8%
19	Women	-29%	4%	13%	6%	19%	25%	18%	21%	0%	-9%
	Men	-21%	10%	22%	12%	21%	24%	29%	21%	0%	-7%
20-24	Women	-21%	22%	26%	27%	33%	42%	33%	26%	0%	-13%
	Men	-2%	46%	56%	43%	39%	54%	45%	37%	0%	-11%
25-29	Women	-26%	18%	25%	23%	29%	39%	33%	34%	0%	-16%
	Men	-14%	41%	42%	30%	39%	43%	35%	35%	0%	-20%
30-34	Women	-27%	19%	27%	22%	26%	31%	23%	28%	0%	-11%
	Men	-19%	59%	70%	52%	49%	53%	48%	57%	0%	-21%
35 and over	Women	-26%	21%	19%	13%	10%	19%	18%	27%	0%	-12%
	Men	-39%	6%	14%	6%	-0%	18%	27%	38%	0%	-23%
All ages	Women	-25%	13%	16%	15%	20%	27%	23%	22%	0%	-10%
	Men	-22%	27%	34%	23%	22%	33%	33%	35%	0%	-15%

Note: The percentage change is not recorded in the above table for groups with fewer than 10 applicants in that cycle or in the 2017 cycle.

FB.2.5 Nursing applicants by sex: UK
Difference between cycle and 2017 cycle

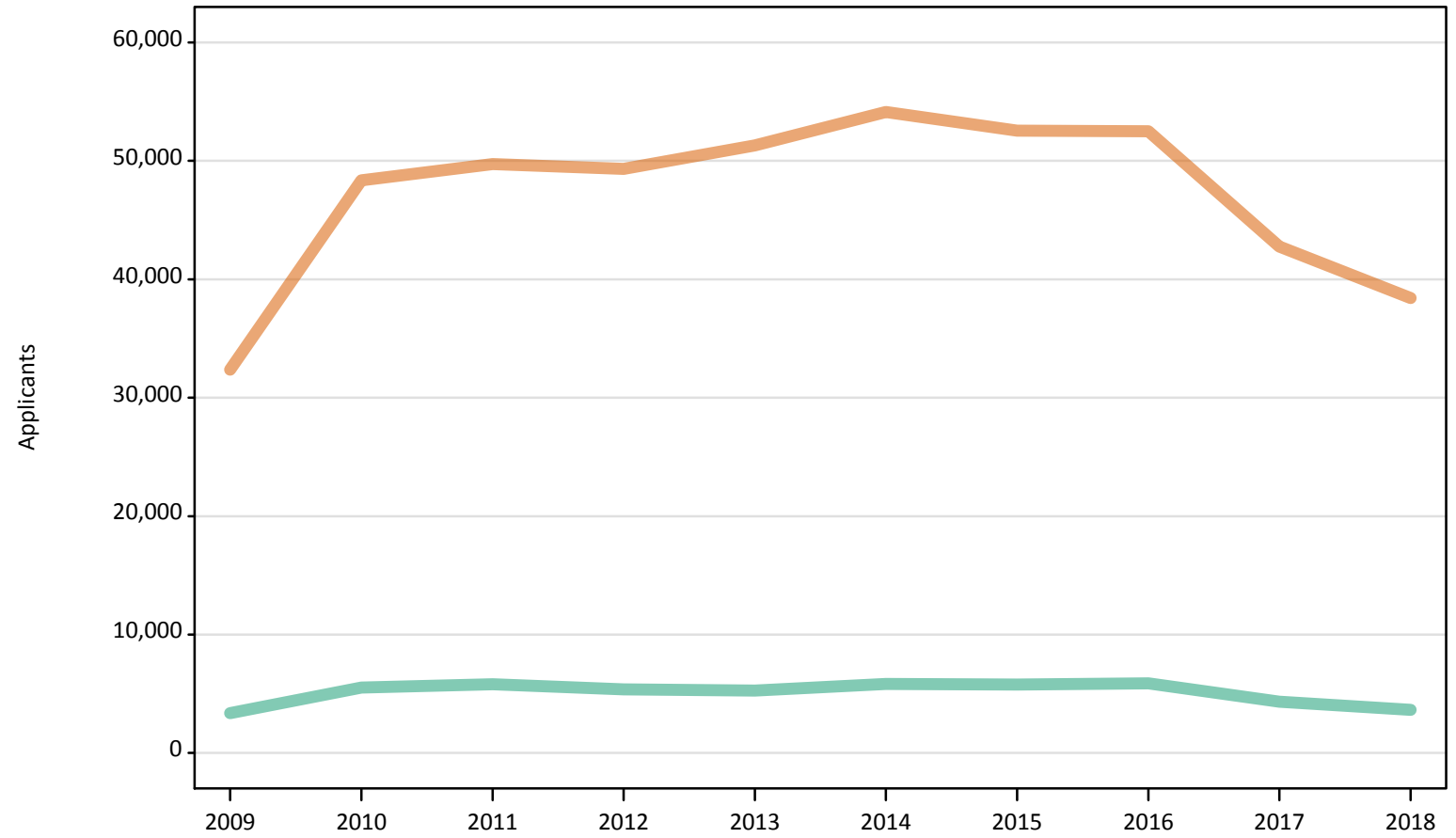
Men
Women



Note: The percentage change is not plotted in the above chart for groups with fewer than 500 applicants in any one cycle.

FB.2.6 Nursing applicants by sex: UK

Men
Women



FB.2.7 Nursing applicants by age and sex: UK

Age group and sex		2009	2010	2011	2012	2013	2014	2015	2016	2017	2018
Under 18	Women	170	290	150	60	60	60	60	60	60	50
	Men	20	30	10	10	0	0	0	0	0	10
18	Women	7,950	10,210	10,410	10,980	11,250	11,450	11,910	11,620	10,680	10,380
	Men	380	550	560	510	500	530	530	520	470	510
19	Women	3,800	5,400	5,910	5,530	6,230	6,520	6,190	6,310	5,230	4,720
	Men	280	380	430	390	420	430	440	410	340	320
20-24	Women	8,350	12,830	13,160	13,290	13,930	14,880	13,970	13,130	10,400	9,060
	Men	830	1,250	1,340	1,240	1,190	1,340	1,250	1,180	860	770
25-29	Women	4,400	7,080	7,400	7,330	7,690	8,310	7,960	8,070	6,000	5,050
	Men	570	970	970	900	950	1,000	950	950	700	540
30-34	Women	2,910	4,720	5,020	4,860	5,020	5,220	4,890	5,110	3,960	3,480
	Men	390	780	820	750	740	770	730	790	490	370
35 and over	Women	4,800	7,830	7,670	7,260	7,110	7,670	7,580	8,190	6,440	5,690
	Men	890	1,570	1,690	1,570	1,470	1,760	1,880	2,030	1,490	1,120
All ages	Women	32,370	48,360	49,720	49,310	51,290	54,120	52,550	52,490	42,750	38,410
	Men	3,360	5,520	5,810	5,370	5,270	5,830	5,780	5,880	4,340	3,640

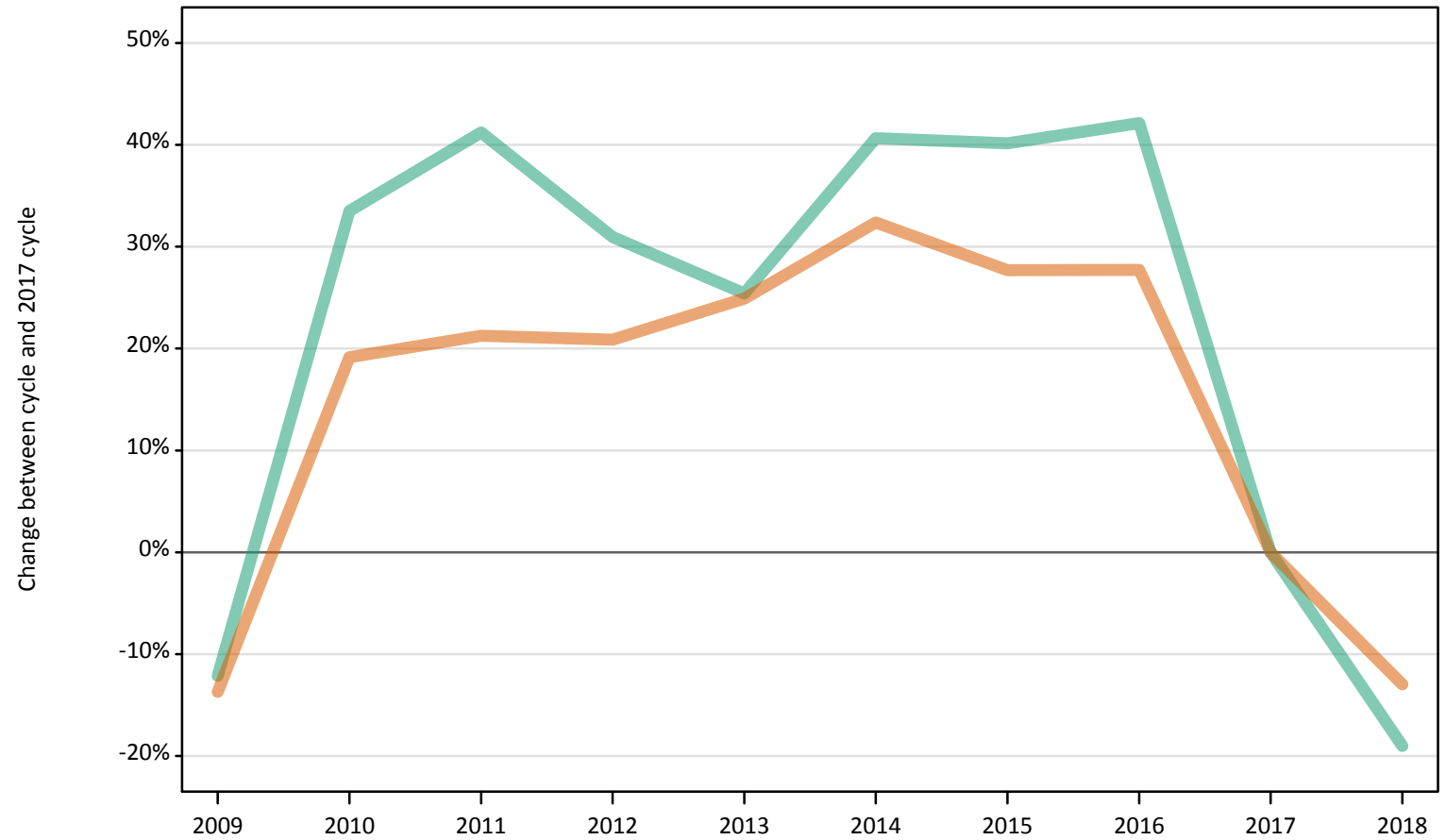
FB.2.8 Nursing applicants by age and sex: UK
Difference between cycle and 2017 cycle

Age group and sex		2009	2010	2011	2012	2013	2014	2015	2016	2017	2018
Under 18	Women	174%	374%	148%	-8%	-3%	3%	-5%	-5%	0%	-26%
	Men										
18	Women	-26%	-4%	-2%	3%	5%	7%	12%	9%	0%	-3%
	Men	-18%	18%	20%	8%	6%	14%	14%	11%	0%	8%
19	Women	-27%	3%	13%	6%	19%	25%	18%	21%	0%	-10%
	Men	-19%	11%	25%	14%	22%	25%	30%	20%	0%	-8%
20-24	Women	-20%	23%	27%	28%	34%	43%	34%	26%	0%	-13%
	Men	-3%	46%	56%	45%	39%	57%	46%	38%	0%	-10%
25-29	Women	-27%	18%	23%	22%	28%	39%	33%	35%	0%	-16%
	Men	-18%	39%	40%	30%	37%	43%	36%	37%	0%	-22%
30-34	Women	-27%	19%	27%	23%	27%	32%	23%	29%	0%	-12%
	Men	-21%	57%	67%	52%	50%	55%	49%	59%	0%	-25%
35 and over	Women	-25%	22%	19%	13%	11%	19%	18%	27%	0%	-12%
	Men	-40%	6%	14%	6%	-1%	19%	26%	37%	0%	-24%
All ages	Women	-24%	13%	16%	15%	20%	27%	23%	23%	0%	-10%
	Men	-23%	27%	34%	24%	21%	34%	33%	35%	0%	-16%

Note: The percentage change is not recorded in the above table for groups with fewer than 10 applicants in that cycle or in the 2017 cycle.

FB.2.9 Nursing applicants by sex: England
Difference between cycle and 2017 cycle

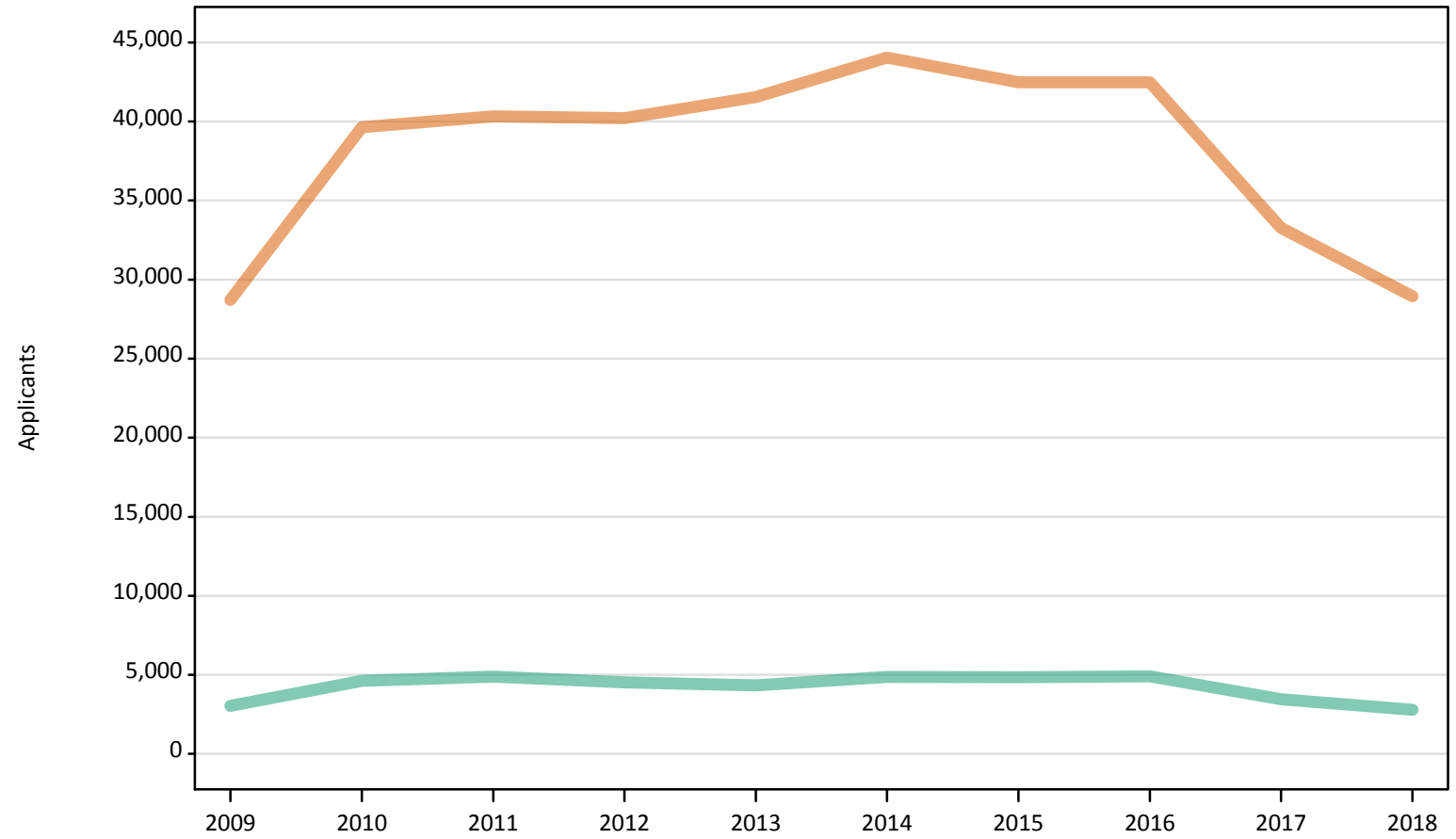
Men
Women



Note: The percentage change is not plotted in the above chart for groups with fewer than 500 applicants in any one cycle.

FB.2.10 Nursing applicants by sex: England

Men
Women



FB.2.11 Nursing applicants by age and sex: England

Age group and sex		2009	2010	2011	2012	2013	2014	2015	2016	2017	2018
Under 18	Women	160	200	90	10	20	20	20	10	10	10
	Men	20	20	10	0	0	0	0	0	0	0
18	Women	6,480	7,700	7,870	8,360	8,640	8,870	9,200	9,040	8,140	7,900
	Men	310	410	420	380	340	370	380	370	320	380
19	Women	3,400	4,380	4,780	4,420	5,040	5,340	5,070	5,100	4,120	3,630
	Men	240	320	350	320	330	340	370	310	270	240
20-24	Women	7,520	10,690	10,650	10,900	11,240	12,110	11,270	10,540	8,060	6,800
	Men	750	1,040	1,090	1,010	960	1,090	1,010	960	640	570
25-29	Women	4,000	5,920	6,110	6,060	6,280	6,730	6,370	6,550	4,560	3,640
	Men	520	790	800	740	760	820	760	760	520	380
30-34	Women	2,660	4,020	4,250	4,160	4,220	4,360	4,040	4,210	3,040	2,550
	Men	370	660	710	640	630	650	620	660	390	270
35 and over	Women	4,500	6,730	6,590	6,280	6,110	6,610	6,510	7,030	5,330	4,420
	Men	840	1,380	1,510	1,430	1,320	1,600	1,690	1,850	1,320	970
All ages	Women	28,710	39,630	40,330	40,210	41,550	44,030	42,480	42,480	33,260	28,950
	Men	3,040	4,610	4,880	4,530	4,330	4,860	4,840	4,910	3,460	2,800

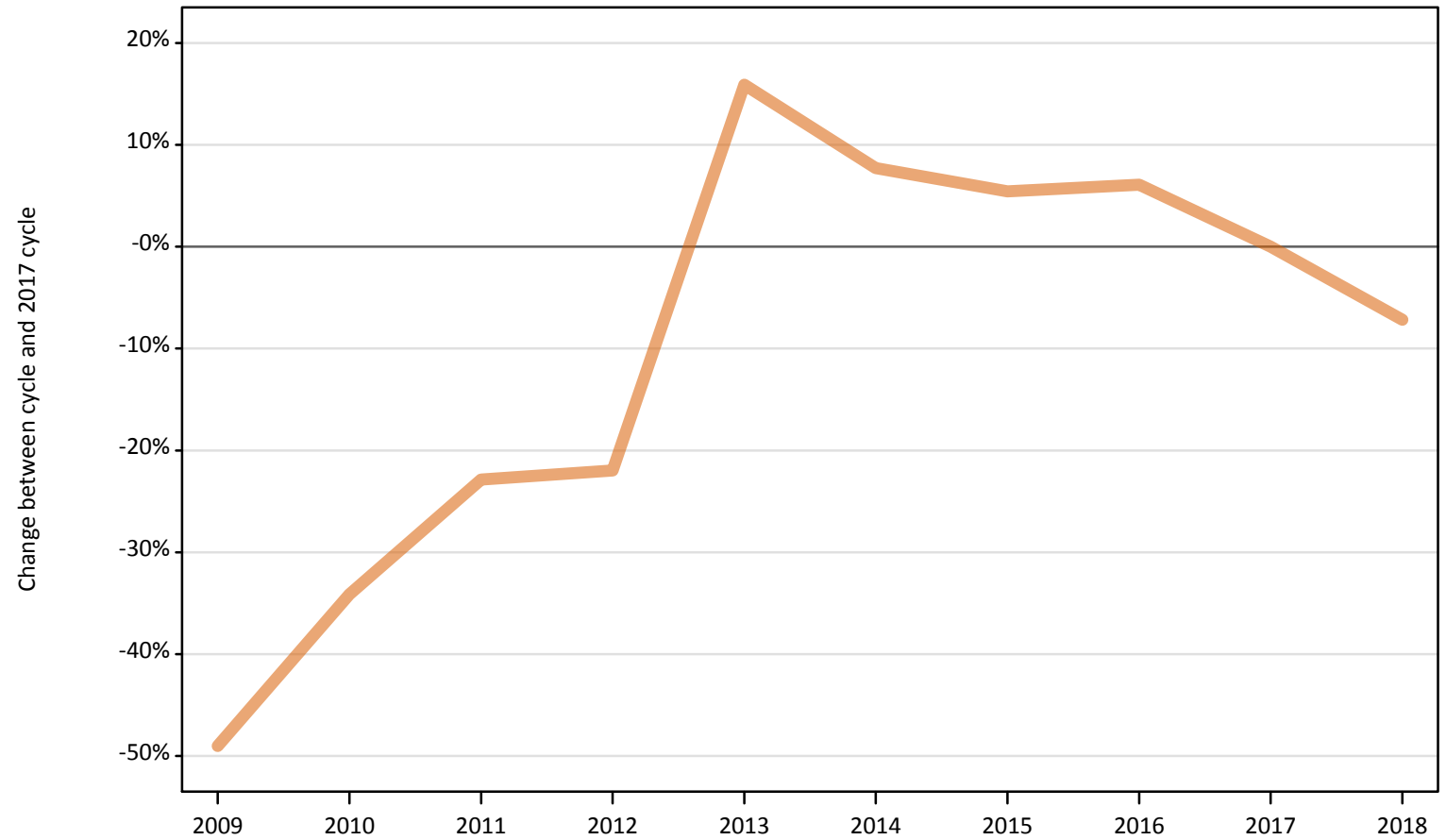
FB.2.12 Nursing applicants by age and sex: England
Difference between cycle and 2017 cycle

Age group and sex		2009	2010	2011	2012	2013	2014	2015	2016	2017	2018
Under 18	Women	1115%	1408%	608%	8%	38%	23%	15%	-15%	0%	-15%
	Men										
18	Women	-20%	-5%	-3%	3%	6%	9%	13%	11%	0%	-3%
	Men	-3%	28%	29%	17%	5%	16%	19%	16%	0%	16%
19	Women	-18%	6%	16%	7%	22%	29%	23%	24%	0%	-12%
	Men	-9%	19%	34%	20%	23%	26%	41%	15%	0%	-11%
20-24	Women	-7%	33%	32%	35%	39%	50%	40%	31%	0%	-16%
	Men	17%	62%	70%	59%	50%	70%	59%	51%	0%	-10%
25-29	Women	-12%	30%	34%	33%	38%	48%	40%	44%	0%	-20%
	Men	-1%	52%	53%	42%	47%	58%	47%	47%	0%	-26%
30-34	Women	-13%	32%	40%	37%	39%	44%	33%	39%	0%	-16%
	Men	-5%	71%	84%	66%	62%	68%	60%	71%	0%	-31%
35 and over	Women	-16%	26%	24%	18%	15%	24%	22%	32%	0%	-17%
	Men	-37%	4%	14%	8%	0%	21%	28%	40%	0%	-27%
All ages	Women	-14%	19%	21%	21%	25%	32%	28%	28%	0%	-13%
	Men	-12%	34%	41%	31%	25%	41%	40%	42%	0%	-19%

Note: The percentage change is not recorded in the above table for groups with fewer than 10 applicants in that cycle or in the 2017 cycle.

FB.2.13 Nursing applicants by sex: Northern Ireland
Difference between cycle and 2017 cycle

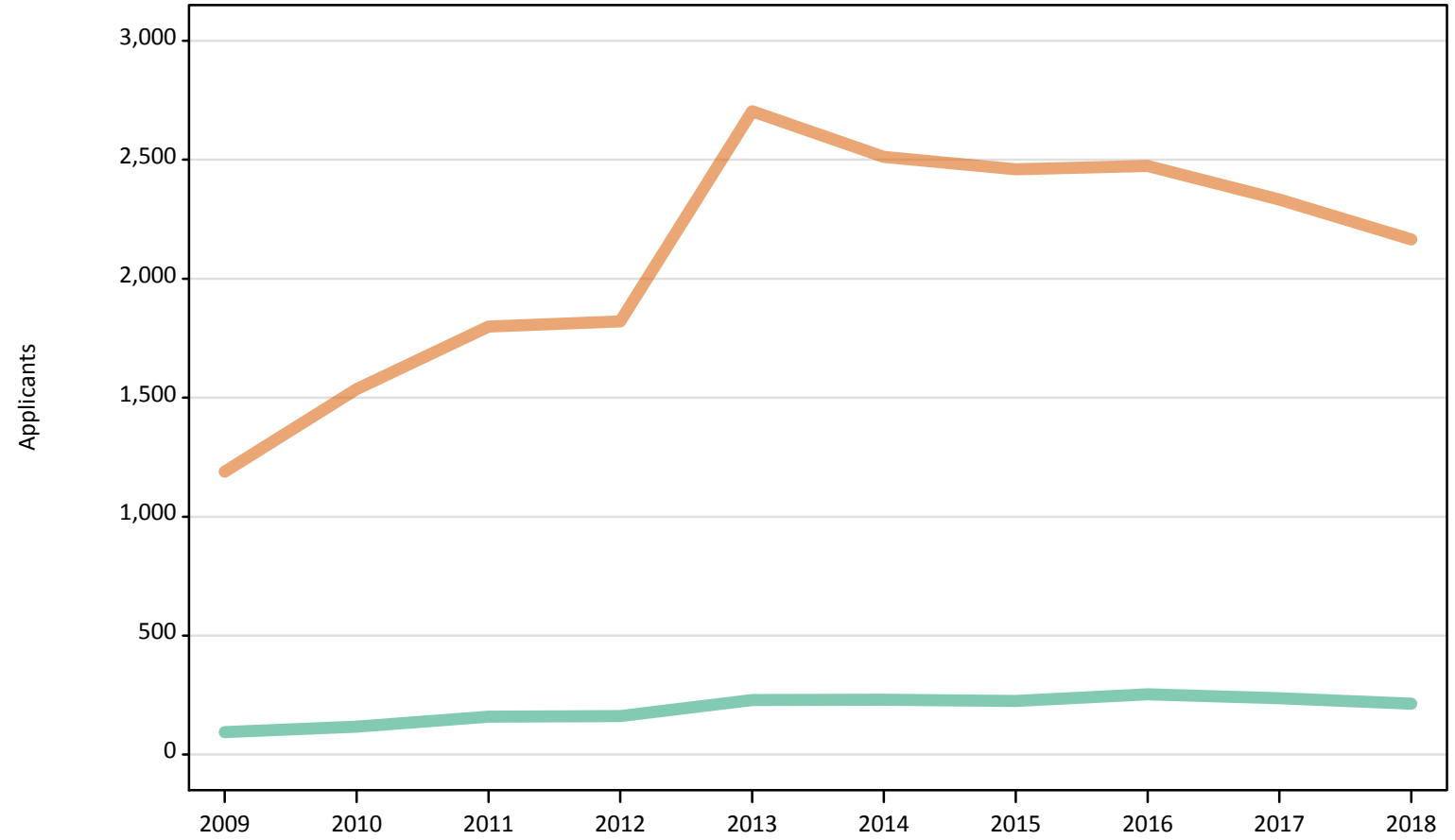
Men
Women



Note: The percentage change is not plotted in the above chart for groups with fewer than 500 applicants in any one cycle.

FB.2.14 Nursing applicants by sex: Northern Ireland

Men
Women



FB.2.15 Nursing applicants by age and sex: Northern Ireland

Age group and sex		2009	2010	2011	2012	2013	2014	2015	2016	2017	2018
Under 18	Women	0	0	0	0	0	0	0	0	0	0
	Men	0	0	0	0	0	0	0	0	0	0
18	Women	700	770	840	890	930	830	850	840	820	830
	Men	40	20	50	50	60	60	50	50	70	70
19	Women	150	200	270	270	400	370	330	370	360	320
	Men	10	10	10	30	30	30	30	40	40	40
20-24	Women	190	320	420	400	750	690	670	630	590	520
	Men	20	30	40	40	50	70	50	60	60	50
25-29	Women	90	130	140	140	290	320	300	300	240	230
	Men	10	20	20	20	40	40	40	40	30	30
30-34	Women	30	50	60	60	160	170	160	160	150	130
	Men	10	10	20	10	20	20	20	20	20	20
35 and over	Women	30	70	70	60	170	140	150	170	170	150
	Men	20	20	10	10	20	20	30	30	20	10
All ages	Women	1,190	1,540	1,800	1,820	2,700	2,510	2,460	2,470	2,330	2,170
	Men	90	120	160	160	230	230	230	250	240	210

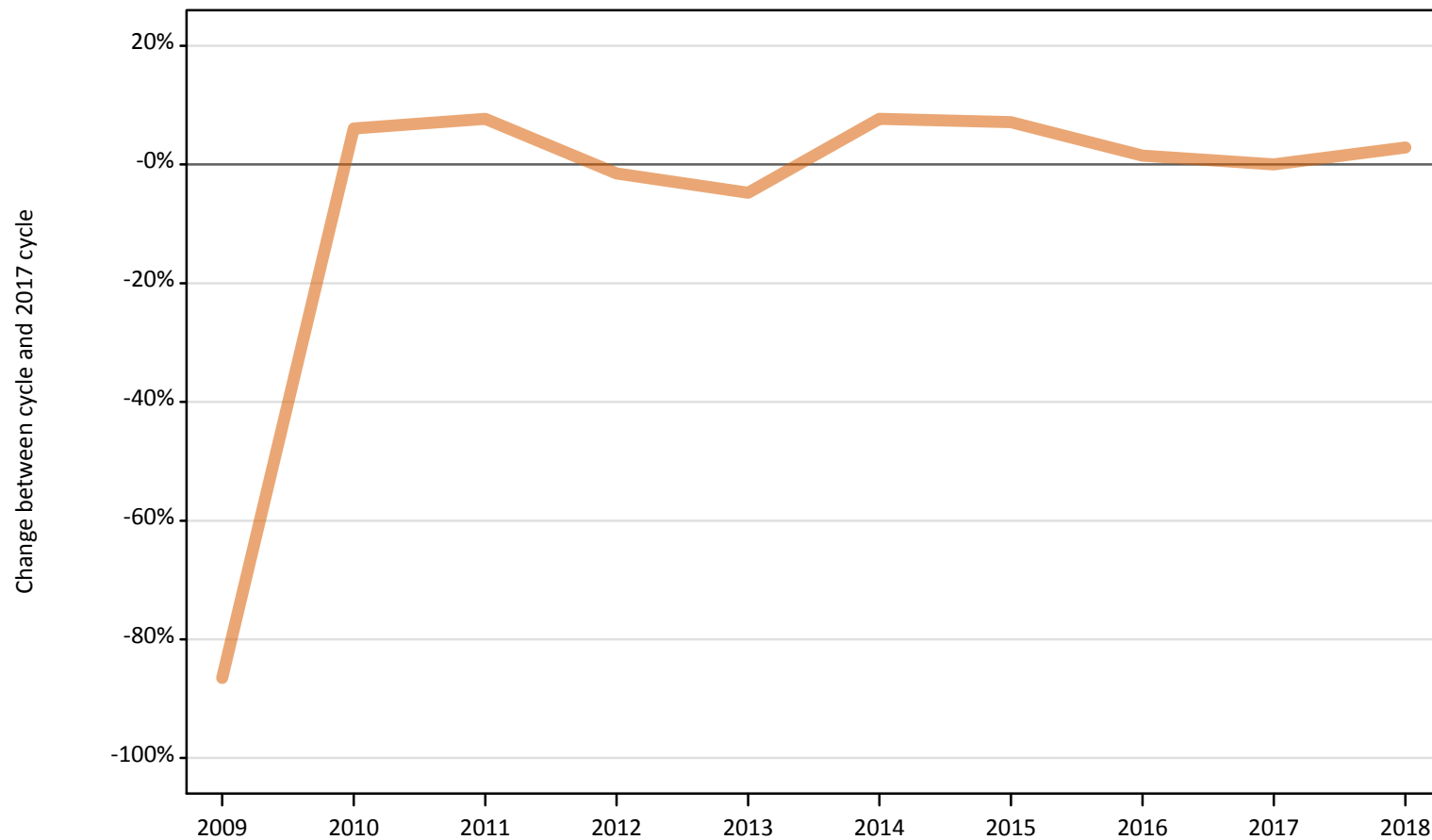
FB.2.16 Nursing applicants by age and sex: Northern Ireland
 Difference between cycle and 2017 cycle

Age group and sex		2009	2010	2011	2012	2013	2014	2015	2016	2017	2018
Under 18	Women										
	Men										
18	Women	-15%	-7%	2%	8%	13%	0%	3%	1%	0%	0%
	Men	-49%	-70%	-25%	-35%	-12%	-13%	-22%	-26%	0%	1%
19	Women	-59%	-44%	-26%	-23%	12%	3%	-8%	4%	0%	-11%
	Men	-86%	-71%	-63%	-14%	-11%	-17%	-9%	20%	0%	0%
20-24	Women	-67%	-45%	-29%	-31%	27%	18%	14%	8%	0%	-12%
	Men	-68%	-45%	-31%	-40%	-16%	6%	-16%	2%	0%	-19%
25-29	Women	-65%	-49%	-41%	-43%	21%	31%	23%	23%	0%	-7%
	Men	-68%	-38%	-35%	-35%	29%	12%	3%	26%	0%	-18%
30-34	Women	-79%	-68%	-61%	-62%	9%	11%	3%	9%	0%	-14%
	Men	-65%	-45%	-20%	-30%	0%	-20%	10%	15%	0%	-15%
35 and over	Women	-84%	-58%	-56%	-66%	1%	-17%	-8%	1%	0%	-10%
	Men	-6%	24%	-24%	-24%	24%	24%	82%	82%	0%	-18%
All ages	Women	-49%	-34%	-23%	-22%	16%	8%	5%	6%	0%	-7%
	Men	-60%	-50%	-33%	-32%	-3%	-3%	-5%	7%	0%	-10%

Note: The percentage change is not recorded in the above table for groups with fewer than 10 applicants in that cycle or in the 2017 cycle.

FB.2.17 Nursing applicants by sex: Scotland
Difference between cycle and 2017 cycle

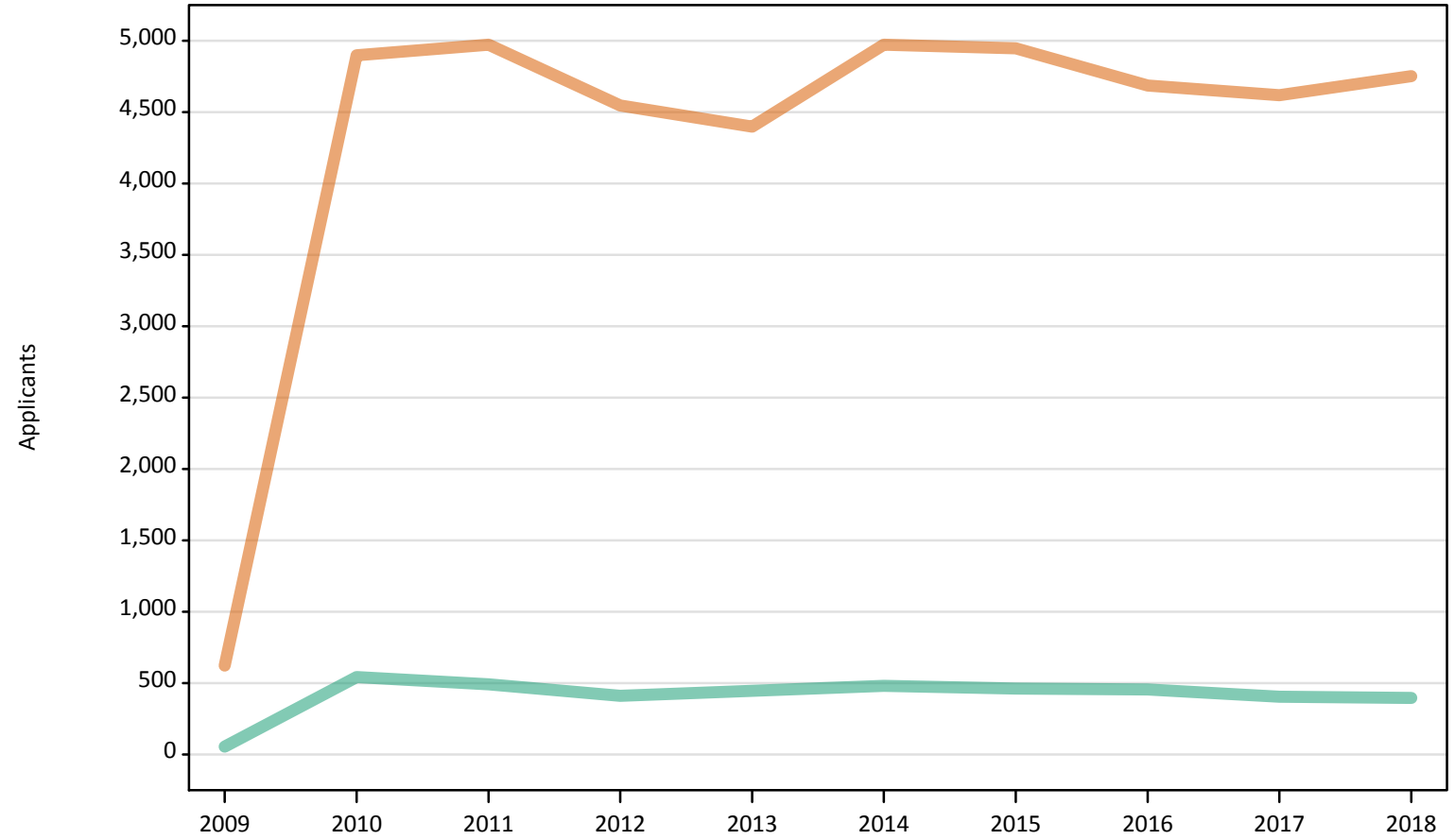
Men
Women



Note: The percentage change is not plotted in the above chart for groups with fewer than 500 applicants in any one cycle.

FB.2.18 Nursing applicants by sex: Scotland

Men
Women



FB.2.19 Nursing applicants by age and sex: Scotland

Age group and sex		2009	2010	2011	2012	2013	2014	2015	2016	2017	2018
Under 18	Women	10	90	60	40	40	50	40	40	50	30
	Men	0	0	0	0	0	0	0	0	0	0
18	Women	300	1,160	1,160	1,160	1,110	1,170	1,210	1,090	1,100	1,070
	Men	10	80	60	60	70	70	70	70	40	40
19	Women	70	560	530	530	510	530	490	500	440	460
	Men	10	40	30	30	40	40	20	40	20	20
20-24	Women	130	1,240	1,380	1,200	1,190	1,360	1,270	1,150	1,110	1,120
	Men	20	120	120	100	100	120	120	100	100	90
25-29	Women	50	690	710	670	660	800	830	770	760	760
	Men	10	110	100	80	80	90	90	90	90	100
30-34	Women	30	420	470	370	370	450	480	470	510	520
	Men	0	80	70	60	60	70	50	70	60	50
35 and over	Women	30	740	670	570	530	630	640	670	660	790
	Men	0	120	110	90	90	100	110	90	90	100
All ages	Women	620	4,900	4,970	4,550	4,400	4,970	4,950	4,690	4,620	4,750
	Men	60	540	490	410	450	480	460	460	410	400

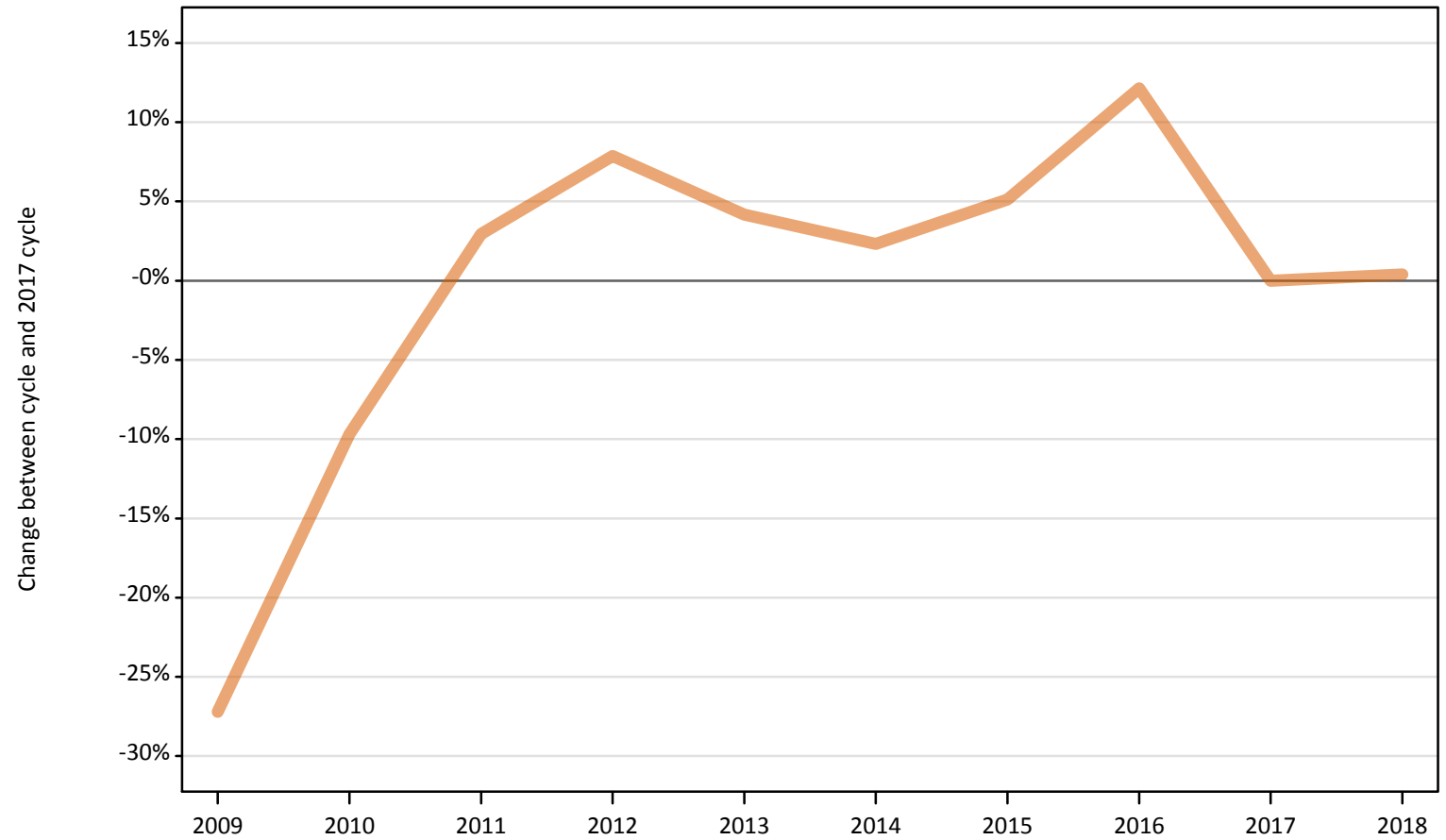
FB.2.20 Nursing applicants by age and sex: Scotland
Difference between cycle and 2017 cycle

Age group and sex		2009	2010	2011	2012	2013	2014	2015	2016	2017	2018
Under 18	Women	-82%	91%	27%	-13%	-18%	2%	-11%	-11%	0%	-27%
	Men										
18	Women	-73%	5%	5%	5%	0%	6%	10%	-1%	0%	-3%
	Men	-78%	90%	51%	44%	73%	66%	59%	68%	0%	-7%
19	Women	-84%	28%	21%	22%	15%	20%	13%	15%	0%	5%
	Men	-50%	46%	42%	4%	75%	75%	-4%	63%	0%	-4%
20-24	Women	-88%	12%	24%	9%	8%	23%	14%	4%	0%	1%
	Men	-81%	20%	24%	3%	3%	15%	17%	2%	0%	-10%
25-29	Women	-94%	-9%	-6%	-11%	-13%	5%	9%	1%	0%	0%
	Men	-87%	26%	10%	-11%	-8%	-4%	2%	-1%	0%	6%
30-34	Women	-93%	-18%	-8%	-27%	-28%	-13%	-7%	-8%	0%	1%
	Men		31%	17%	-5%	0%	16%	-7%	16%	0%	-9%
35 and over	Women	-95%	13%	3%	-13%	-19%	-4%	-3%	2%	0%	21%
	Men		31%	16%	-4%	-4%	12%	20%	-2%	0%	7%
All ages	Women	-86%	6%	8%	-2%	-5%	8%	7%	1%	0%	3%
	Men	-86%	34%	22%	2%	10%	19%	14%	13%	0%	-2%

Note: The percentage change is not recorded in the above table for groups with fewer than 10 applicants in that cycle or in the 2017 cycle.

FB.2.21 Nursing applicants by sex: Wales
Difference between cycle and 2017 cycle

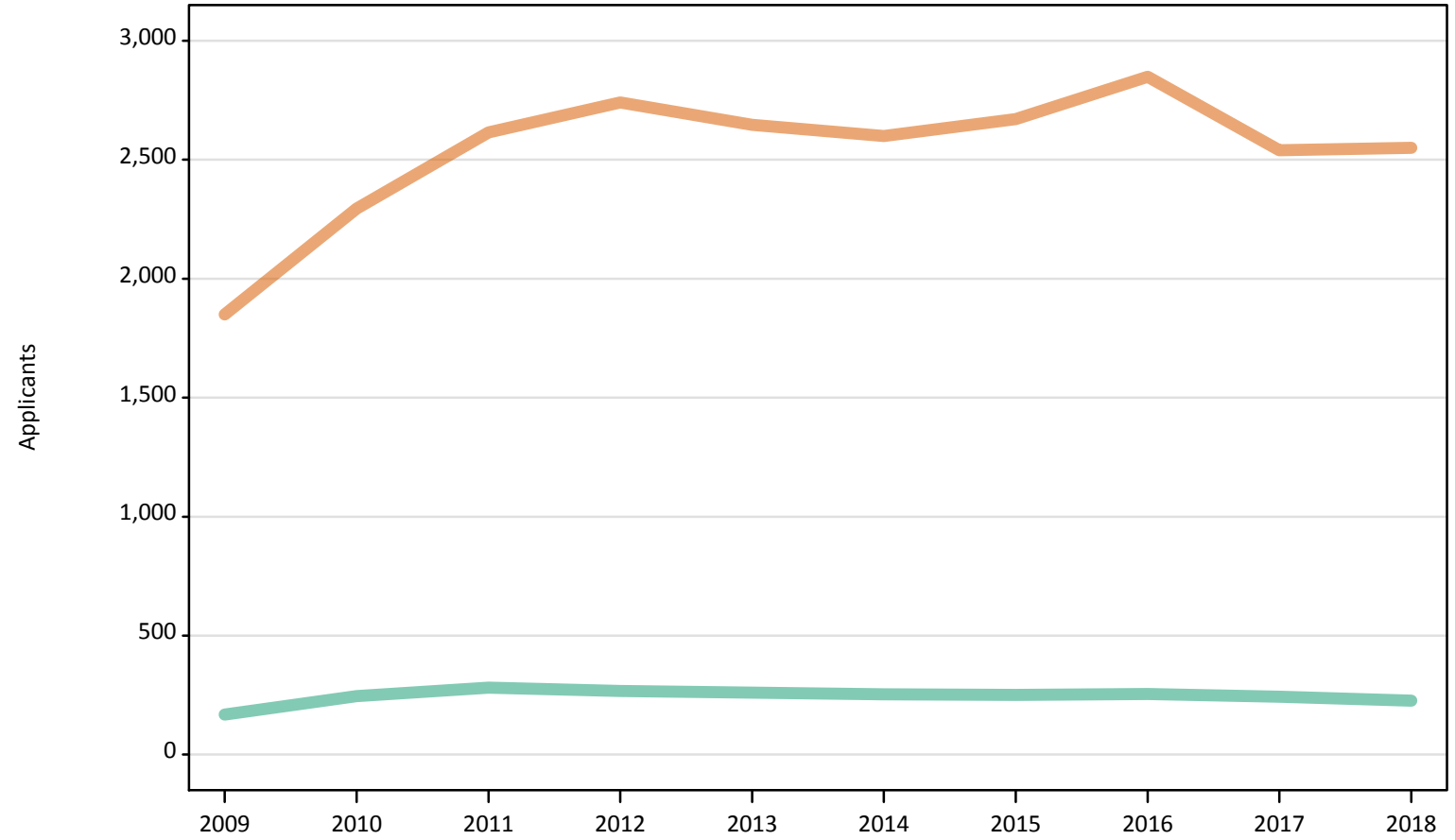
Men
Women



Note: The percentage change is not plotted in the above chart for groups with fewer than 500 applicants in any one cycle.

FB.2.22 Nursing applicants by sex: Wales

Men
Women



FB.2.23 Nursing applicants by age and sex: Wales

Age group and sex		2009	2010	2011	2012	2013	2014	2015	2016	2017	2018
Under 18	Women	0	0	0	0	0	0	0	0	0	0
	Men	0	0	0	0	0	0	0	0	0	0
18	Women	470	580	550	570	580	580	650	650	610	580
	Men	30	40	30	20	30	30	30	30	30	20
19	Women	180	260	330	300	290	290	300	330	310	320
	Men	20	20	20	20	20	20	20	20	20	20
20-24	Women	500	580	720	790	760	720	760	810	640	620
	Men	40	60	80	90	80	80	70	60	60	60
25-29	Women	270	350	440	450	460	460	460	460	430	420
	Men	30	50	60	60	60	50	60	60	50	40
30-34	Women	190	230	250	270	270	250	220	270	270	290
	Men	10	30	30	40	30	30	40	30	30	30
35 and over	Women	240	290	330	360	300	300	290	320	280	330
	Men	40	60	60	40	40	40	50	60	50	50
All ages	Women	1,850	2,290	2,620	2,740	2,650	2,600	2,670	2,850	2,540	2,550
	Men	170	250	280	270	260	250	250	260	240	230

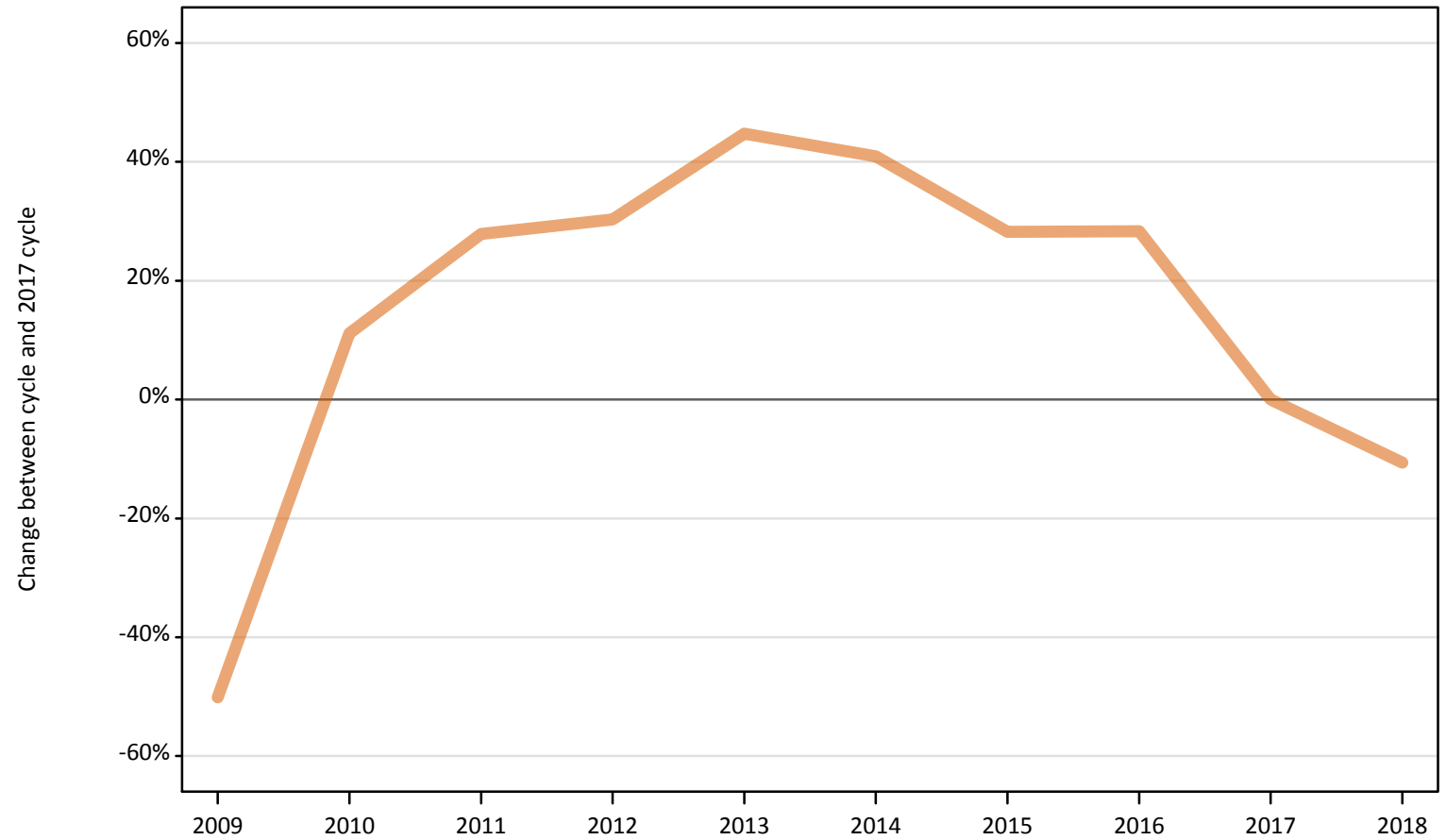
FB.2.24 Nursing applicants by age and sex: Wales
Difference between cycle and 2017 cycle

Age group and sex		2009	2010	2011	2012	2013	2014	2015	2016	2017	2018
Under 18	Women										
	Men										
18	Women	-23%	-5%	-10%	-6%	-6%	-5%	6%	7%	0%	-5%
	Men	-21%	12%	-21%	-32%	-24%	-12%	-15%	-26%	0%	-35%
19	Women	-40%	-15%	8%	-1%	-6%	-5%	-1%	8%	0%	3%
	Men	12%	0%	41%	-6%	6%	24%	-12%	35%	0%	29%
20-24	Women	-22%	-10%	12%	23%	18%	12%	18%	26%	0%	-4%
	Men	-26%	7%	47%	54%	39%	32%	18%	0%	0%	9%
25-29	Women	-38%	-19%	1%	4%	5%	7%	6%	6%	0%	-4%
	Men	-42%	-9%	9%	15%	17%	2%	9%	6%	0%	-25%
30-34	Women	-29%	-14%	-5%	1%	1%	-7%	-18%	3%	0%	11%
	Men	-61%	-7%	-4%	32%	21%	18%	29%	21%	0%	21%
35 and over	Women	-16%	3%	16%	27%	6%	5%	2%	13%	0%	15%
	Men	-30%	2%	13%	-22%	-26%	-26%	-15%	11%	0%	-13%
All ages	Women	-27%	-10%	3%	8%	4%	2%	5%	12%	0%	0%
	Men	-31%	1%	16%	10%	7%	4%	3%	5%	0%	-7%

Note: The percentage change is not recorded in the above table for groups with fewer than 10 applicants in that cycle or in the 2017 cycle.

FB.2.25 Nursing applicants by sex: EU (excluding UK)
Difference between cycle and 2017 cycle

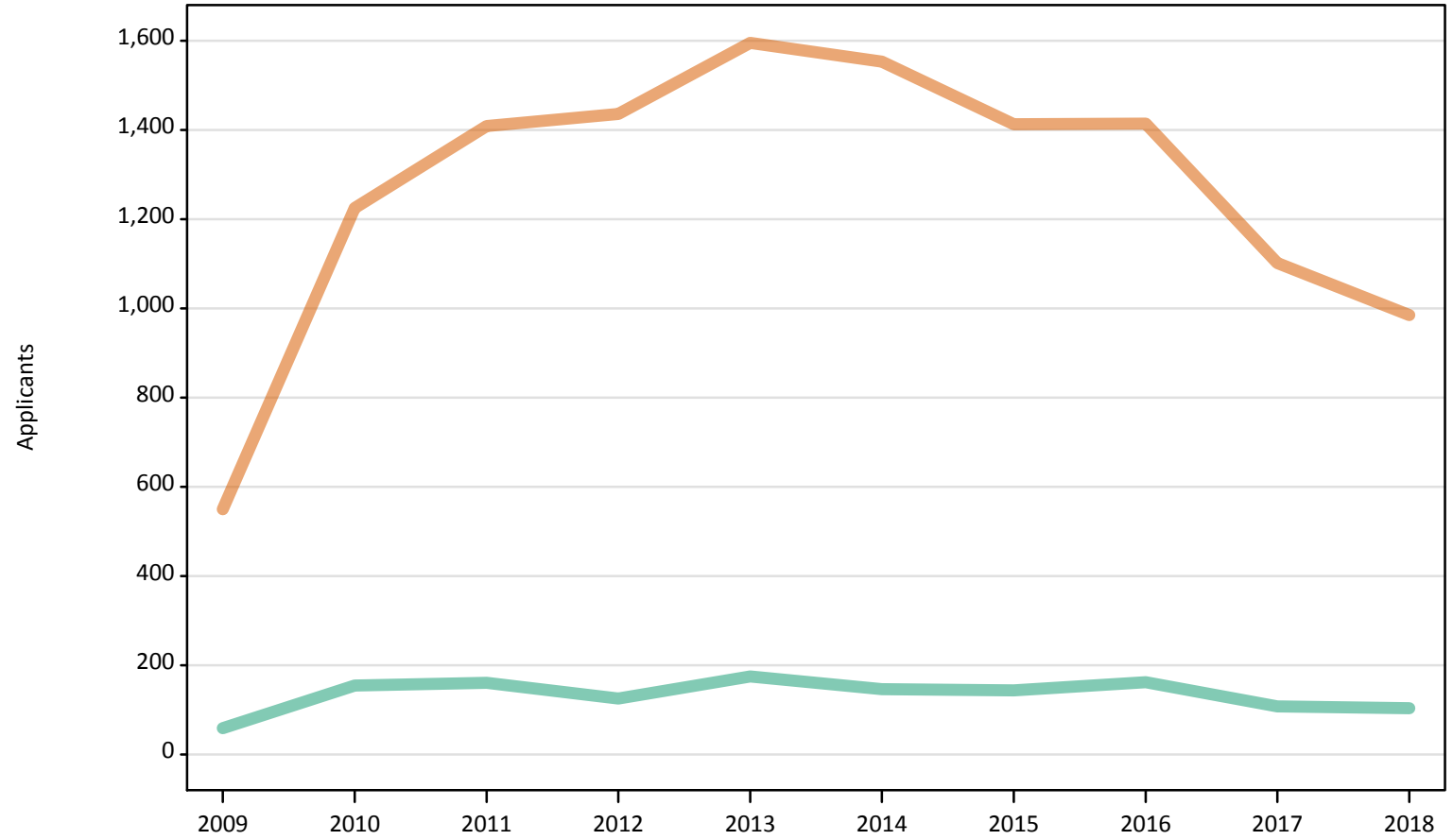
Men
Women



Note: The percentage change is not plotted in the above chart for groups with fewer than 500 applicants in any one cycle.

FB.2.26 Nursing applicants by sex: EU (excluding UK)

Men
Women



FB.2.27 Nursing applicants by age and sex: EU (excluding UK)

Age group and sex		2009	2010	2011	2012	2013	2014	2015	2016	2017	2018
Under 18	Women	30	80	80	70	70	80	60	60	50	50
	Men	0	0	10	0	10	0	10	0	0	0
18	Women	150	310	340	340	400	340	310	340	250	220
	Men	10	20	10	20	30	20	20	30	20	20
19	Women	120	320	320	340	370	380	350	360	290	270
	Men	10	20	20	20	30	30	30	30	20	30
20-24	Women	180	340	430	440	500	490	460	430	370	320
	Men	20	50	50	40	60	50	40	50	30	30
25-29	Women	50	110	160	140	160	160	150	120	80	70
	Men	10	30	20	20	20	20	20	20	10	10
30-34	Women	20	40	50	50	50	50	40	30	30	30
	Men	10	20	20	10	10	10	10	10	0	10
35 and over	Women	20	30	40	60	50	60	50	60	40	30
	Men	10	20	20	20	30	20	20	30	20	10
All ages	Women	550	1,230	1,410	1,440	1,600	1,550	1,410	1,410	1,100	990
	Men	60	160	160	130	180	150	140	160	110	100

FB.2.28 Nursing applicants by age and sex: EU (excluding UK)

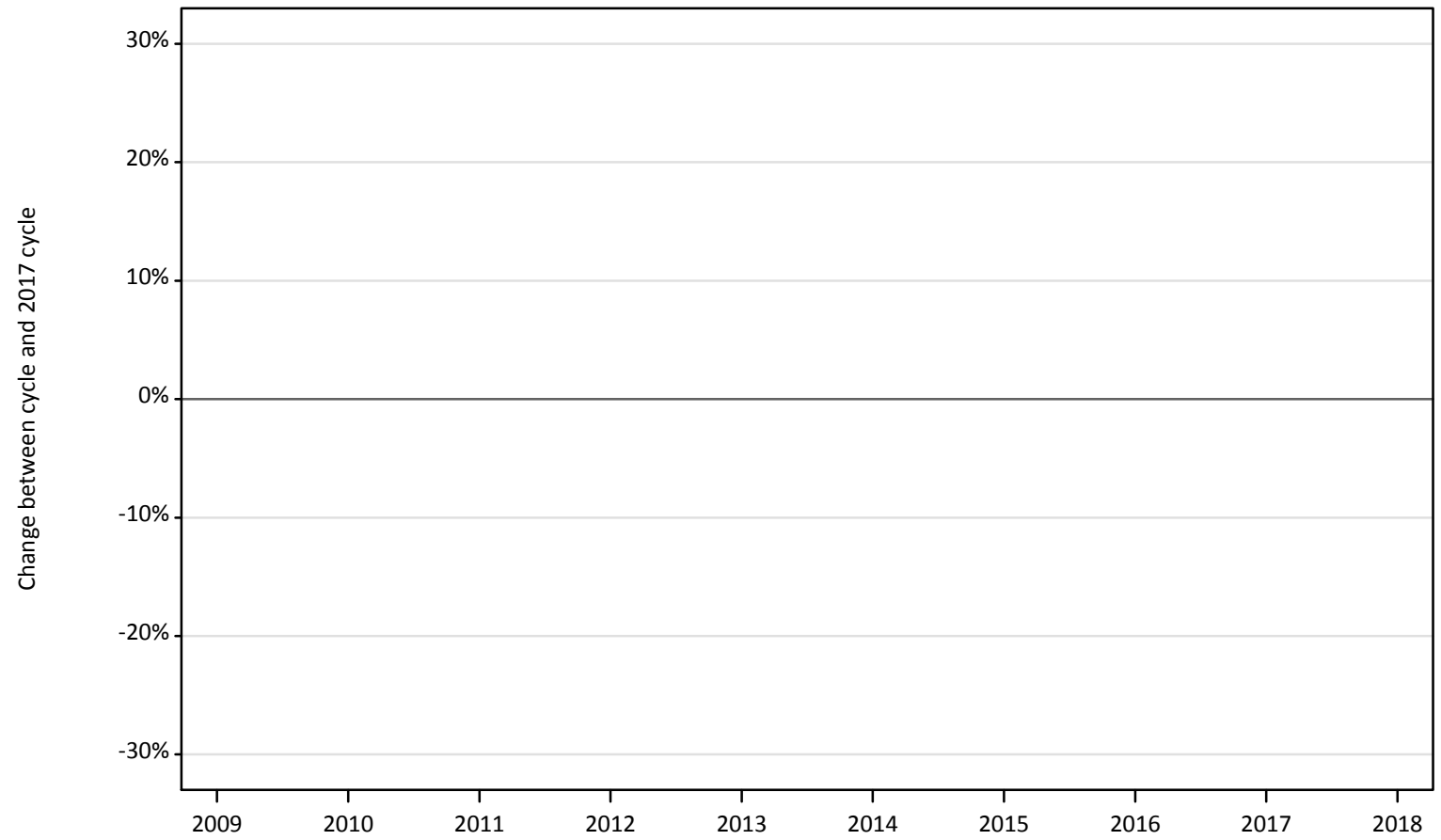
Difference between cycle and 2017 cycle

Age group and sex		2009	2010	2011	2012	2013	2014	2015	2016	2017	2018
Under 18	Women	-48%	44%	50%	33%	40%	46%	10%	17%	0%	-8%
	Men										
18	Women	-39%	27%	38%	40%	62%	40%	24%	40%	0%	-9%
	Men	-75%	0%	-30%	20%	30%	10%	0%	50%	0%	-15%
19	Women	-59%	11%	12%	18%	29%	31%	23%	27%	0%	-7%
	Men	-48%	14%	14%	-19%	38%	24%	33%	33%	0%	19%
20-24	Women	-52%	-8%	14%	17%	34%	32%	23%	16%	0%	-14%
	Men	-50%	44%	56%	21%	62%	50%	24%	44%	0%	-15%
25-29	Women	-40%	41%	112%	88%	107%	112%	96%	64%	0%	-13%
	Men	10%	150%	130%	50%	120%	120%	50%	60%	0%	0%
30-34	Women	-41%	48%	66%	62%	66%	59%	34%	17%	0%	-10%
	Men										
35 and over	Women	-61%	-29%	-2%	46%	27%	46%	29%	37%	0%	-17%
	Men	-56%	6%	19%	-6%	56%	0%	44%	81%	0%	-13%
All ages	Women	-50%	11%	28%	30%	45%	41%	28%	28%	0%	-11%
	Men	-45%	44%	49%	17%	62%	36%	33%	50%	0%	-4%

Note: The percentage change is not recorded in the above table for groups with fewer than 10 applicants in that cycle or in the 2017 cycle.

FB.2.29 Nursing applicants by sex: Not EU
Difference between cycle and 2017 cycle

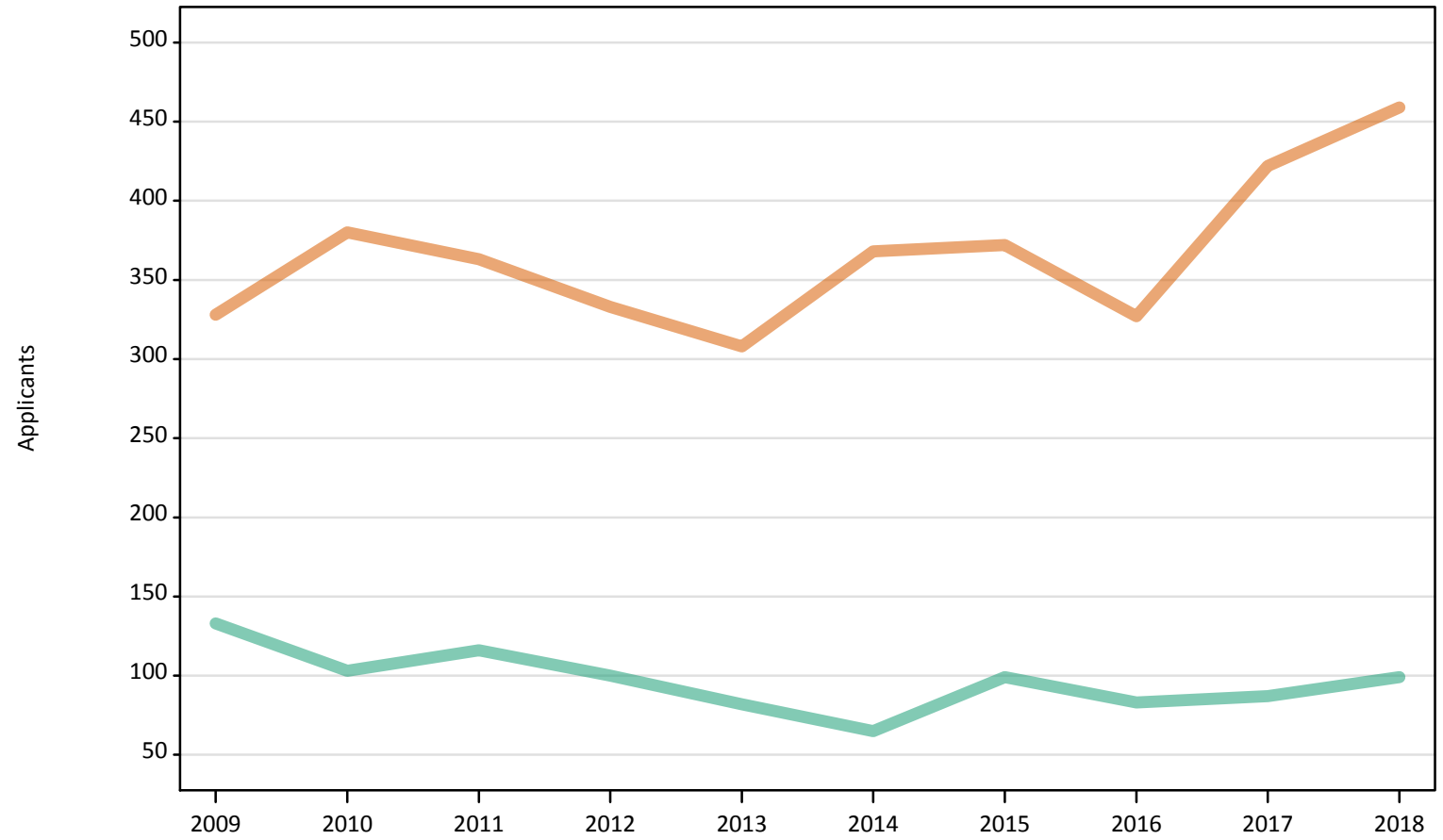
Men
Women



Note: The percentage change is not plotted in the above chart for groups with fewer than 500 applicants in any one cycle.

FB.2.30 Nursing applicants by sex: Not EU

Men
Women



FB.2.31 Nursing applicants by age and sex: Not EU

Age group and sex		2009	2010	2011	2012	2013	2014	2015	2016	2017	2018
Under 18	Women	0	10	10	10	10	10	10	10	10	10
	Men	0	0	0	0	0	0	0	0	0	0
18	Women	40	30	40	70	60	60	70	50	80	90
	Men	0	0	0	10	10	10	10	10	10	10
19	Women	30	40	40	40	40	50	40	30	50	70
	Men	10	10	10	10	0	10	10	10	10	10
20-24	Women	110	130	110	90	90	130	100	100	120	130
	Men	50	30	40	30	30	20	30	20	20	20
25-29	Women	70	80	80	60	60	50	80	60	70	60
	Men	40	30	30	20	30	10	20	10	20	20
30-34	Women	40	50	40	30	30	30	30	30	50	70
	Men	20	20	30	20	10	10	20	10	20	20
35 and over	Women	40	40	50	40	20	40	40	50	50	40
	Men	20	20	10	10	10	10	10	20	10	20
All ages	Women	330	380	360	330	310	370	370	330	420	460
	Men	130	100	120	100	80	70	100	80	90	100

FB.2.32 Nursing applicants by age and sex: Not EU

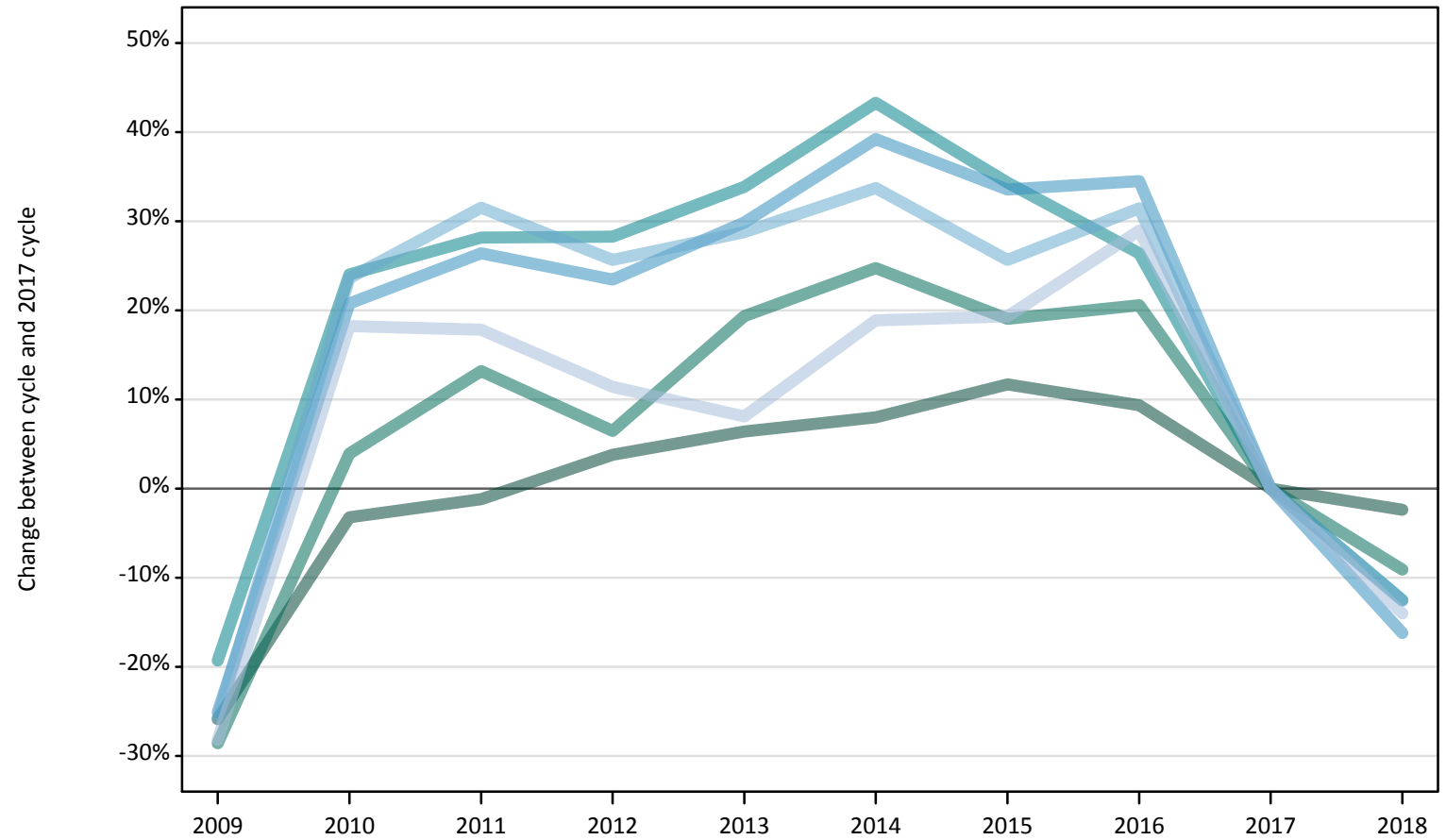
Difference between cycle and 2017 cycle

Age group and sex		2009	2010	2011	2012	2013	2014	2015	2016	2017	2018
Under 18	Women		-36%	-9%	-27%	-18%	9%	-18%	-36%	0%	-9%
	Men										
18	Women	-54%	-58%	-54%	-13%	-22%	-28%	-13%	-30%	0%	13%
	Men				-20%	-40%	-20%	0%	-20%	0%	30%
19	Women	-40%	-21%	-27%	-33%	-33%	-8%	-19%	-35%	0%	25%
	Men	-44%	-33%	-44%	-22%		-33%	0%	22%	0%	-33%
20-24	Women	-9%	12%	-5%	-19%	-19%	8%	-12%	-13%	0%	10%
	Men	104%	29%	58%	25%	4%	-25%	29%	-25%	0%	-33%
25-29	Women	3%	13%	22%	-10%	-4%	-22%	16%	-15%	0%	-6%
	Men	141%	59%	76%	41%	59%	-29%	0%	-24%	0%	18%
30-34	Women	-9%	13%	-11%	-30%	-43%	-30%	-30%	-36%	0%	40%
	Men	13%	25%	63%	0%	-31%	-38%	6%	-38%	0%	50%
35 and over	Women	-21%	-23%	-13%	-30%	-62%	-19%	-21%	-15%	0%	-23%
	Men	89%	89%	56%	33%	11%	0%	56%	133%	0%	111%
All ages	Women	-22%	-10%	-14%	-21%	-27%	-13%	-12%	-23%	0%	9%
	Men	53%	18%	33%	15%	-6%	-25%	14%	-5%	0%	14%

Note: The percentage change is not recorded in the above table for groups with fewer than 10 applicants in that cycle or in the 2017 cycle.

FB.2.33 Nursing applicants by age: All domiciles
Difference between cycle and 2017 cycle

- 18
- 19
- 20-24
- 25-29
- 30-34
- 35 and over



Note: The percentage change is not plotted in the above chart for groups with fewer than 500 applicants in any one cycle.

FB.2.34 Nursing applicants by age: All domiciles

Domicile and age group		2009	2010	2011	2012	2013	2014	2015	2016	2017	2018
All domiciles	Under 18	210	400	250	140	150	160	140	130	130	110
	18	8,520	11,120	11,360	11,930	12,230	12,410	12,840	12,570	11,500	11,220
	19	4,240	6,170	6,720	6,320	7,080	7,400	7,070	7,160	5,940	5,400
	20-24	9,530	14,630	15,120	15,140	15,800	16,910	15,850	14,910	11,800	10,320
	25-29	5,140	8,290	8,670	8,470	8,910	9,550	9,160	9,230	6,860	5,750
	30-34	3,380	5,630	5,980	5,720	5,860	6,080	5,720	5,980	4,550	3,980
	35 and over	5,770	9,510	9,470	8,960	8,690	9,560	9,590	10,370	8,040	6,920
	All ages	36,800	55,740	57,580	56,680	58,720	62,080	60,360	60,350	48,810	43,700

FB.2.35 Nursing applicants by age: All domiciles

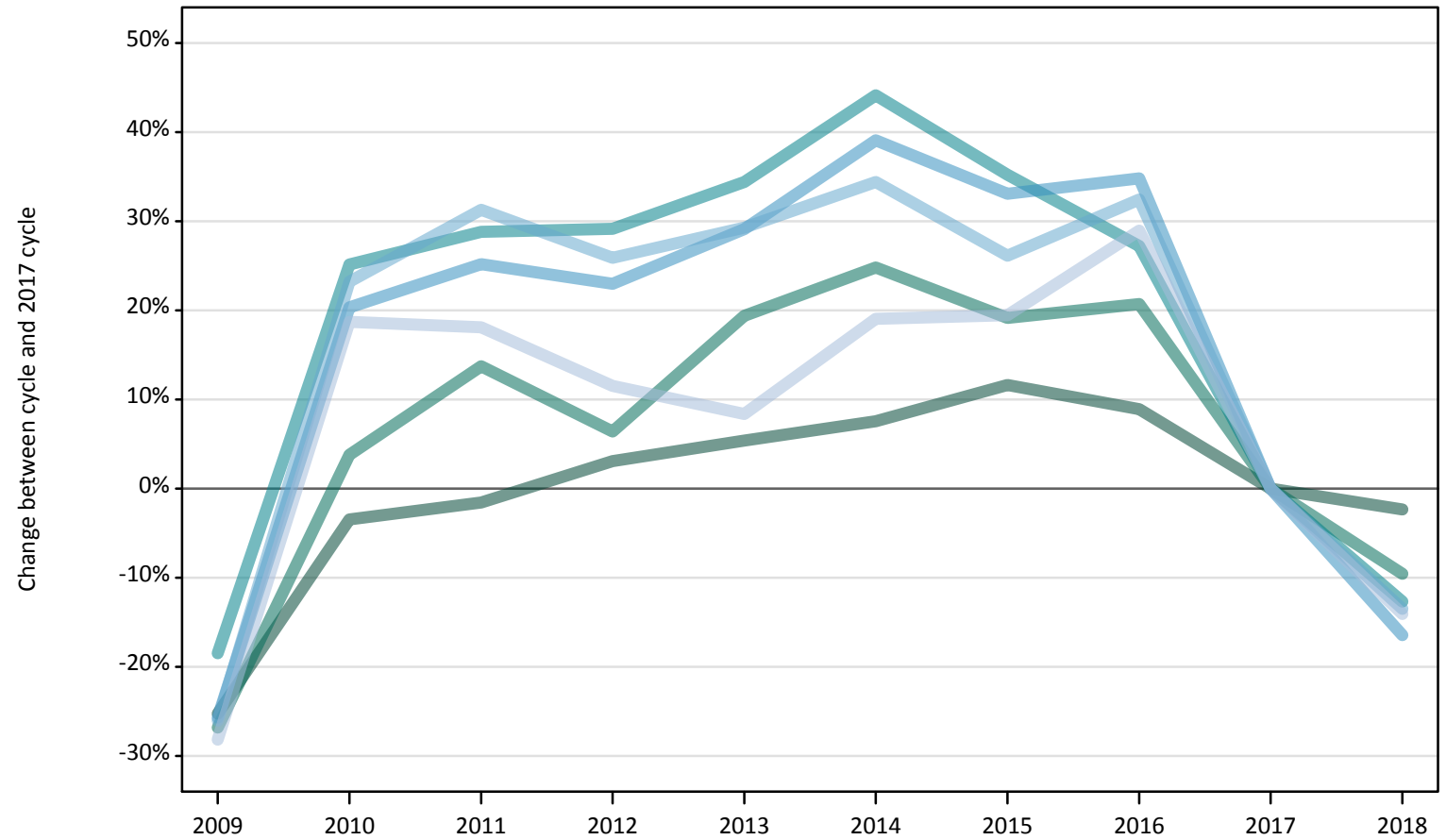
Difference between cycle and 2017 cycle

Domicile and age group		2009	2010	2011	2012	2013	2014	2015	2016	2017	2018
All domiciles	Under 18	60%	199%	89%	8%	13%	19%	3%	-1%	0%	-18%
	18	-26%	-3%	-1%	4%	6%	8%	12%	9%	0%	-2%
	19	-29%	4%	13%	6%	19%	25%	19%	21%	0%	-9%
	20-24	-19%	24%	28%	28%	34%	43%	34%	26%	0%	-13%
	25-29	-25%	21%	26%	23%	30%	39%	34%	35%	0%	-16%
	30-34	-26%	24%	32%	26%	29%	34%	26%	31%	0%	-13%
	35 and over	-28%	18%	18%	11%	8%	19%	19%	29%	0%	-14%
	All ages	-25%	14%	18%	16%	20%	27%	24%	24%	0%	-10%

Note: The percentage change is not recorded in the above table for groups with fewer than 10 applicants in that cycle or in the 2017 cycle.

FB.2.36 Nursing applicants by age: UK
Difference between cycle and 2017 cycle

- 18
- 19
- 20-24
- 25-29
- 30-34
- 35 and over



Note: The percentage change is not plotted in the above chart for groups with fewer than 500 applicants in any one cycle.

FB.2.37 Nursing applicants by age: UK

Domicile and age group		2009	2010	2011	2012	2013	2014	2015	2016	2017	2018
UK	Under 18	180	320	160	60	60	70	60	60	60	50
	18	8,330	10,760	10,970	11,490	11,750	11,990	12,440	12,140	11,140	10,880
	19	4,080	5,780	6,330	5,920	6,650	6,950	6,630	6,720	5,570	5,040
	20-24	9,180	14,080	14,500	14,530	15,120	16,220	15,220	14,310	11,250	9,830
	25-29	4,970	8,050	8,380	8,230	8,640	9,310	8,900	9,020	6,690	5,590
	30-34	3,300	5,490	5,850	5,610	5,760	5,990	5,620	5,900	4,460	3,850
	35 and over	5,690	9,400	9,350	8,840	8,580	9,430	9,460	10,220	7,920	6,810
	All ages	35,730	53,880	55,530	54,680	56,560	59,940	58,340	58,360	47,090	42,050

FB.2.38 Nursing applicants by age: UK

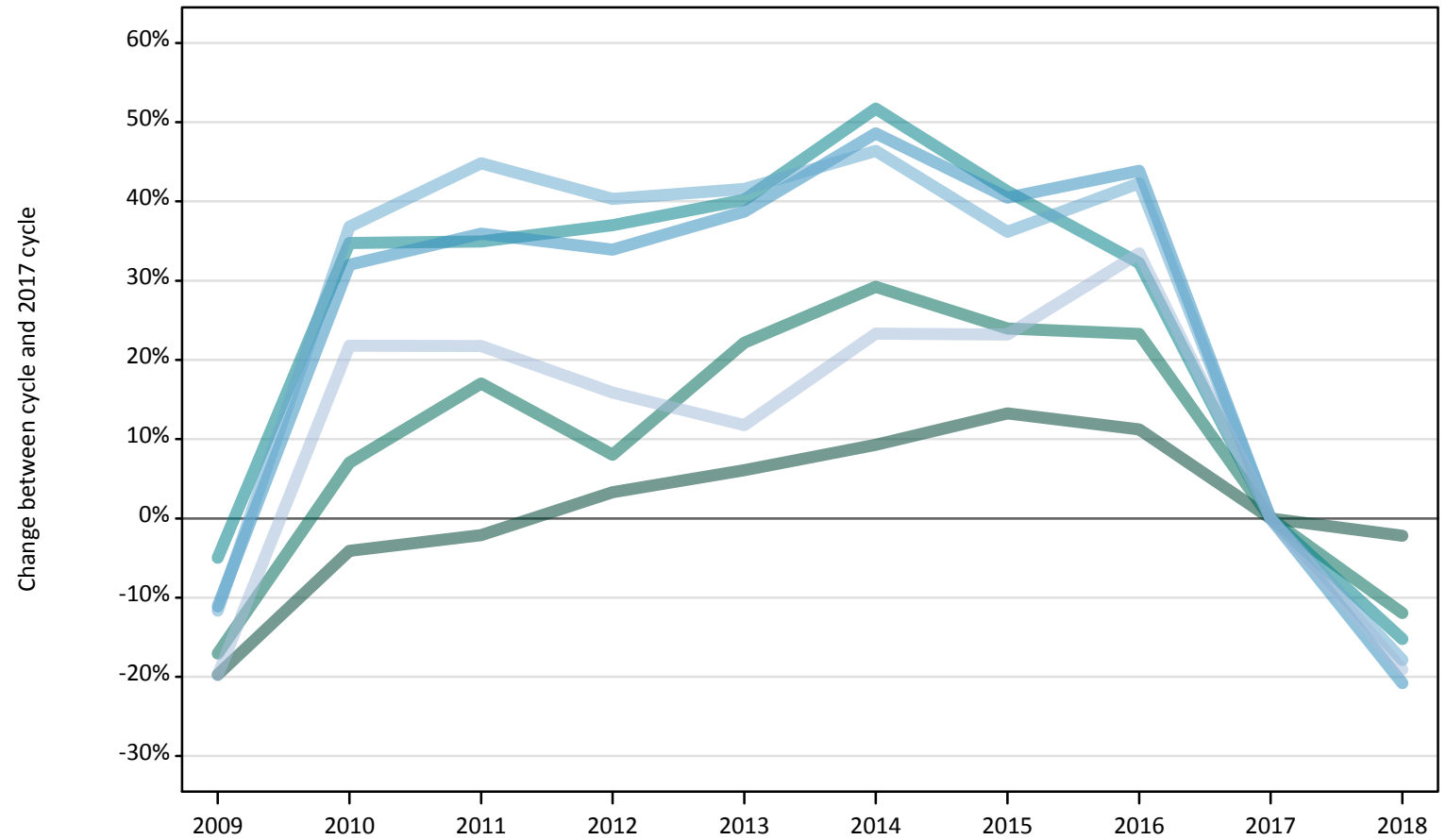
Difference between cycle and 2017 cycle

Domicile and age group		2009	2010	2011	2012	2013	2014	2015	2016	2017	2018
UK	Under 18	186%	392%	144%	-2%	-2%	3%	-3%	-8%	0%	-22%
	18	-25%	-3%	-2%	3%	5%	8%	12%	9%	0%	-2%
	19	-27%	4%	14%	6%	19%	25%	19%	21%	0%	-10%
	20-24	-18%	25%	29%	29%	34%	44%	35%	27%	0%	-13%
	25-29	-26%	20%	25%	23%	29%	39%	33%	35%	0%	-16%
	30-34	-26%	23%	31%	26%	29%	34%	26%	32%	0%	-13%
	35 and over	-28%	19%	18%	12%	8%	19%	19%	29%	0%	-14%
	All ages	-24%	14%	18%	16%	20%	27%	24%	24%	0%	-11%

Note: The percentage change is not recorded in the above table for groups with fewer than 10 applicants in that cycle or in the 2017 cycle.

FB.2.39 Nursing applicants by age: England
Difference between cycle and 2017 cycle

- 18
- 19
- 20-24
- 25-29
- 30-34
- 35 and over



Note: The percentage change is not plotted in the above chart for groups with fewer than 500 applicants in any one cycle.

FB.2.40 Nursing applicants by age: England

Domicile and age group		2009	2010	2011	2012	2013	2014	2015	2016	2017	2018
England	Under 18	170	220	100	20	20	20	20	10	20	20
	18	6,790	8,120	8,280	8,740	8,980	9,250	9,590	9,410	8,460	8,280
	19	3,640	4,700	5,140	4,740	5,360	5,670	5,440	5,410	4,390	3,860
	20-24	8,260	11,720	11,740	11,920	12,190	13,190	12,290	11,500	8,700	7,370
	25-29	4,510	6,700	6,900	6,800	7,040	7,550	7,130	7,310	5,080	4,020
	30-34	3,030	4,680	4,960	4,810	4,850	5,010	4,660	4,870	3,420	2,810
	35 and over	5,340	8,100	8,100	7,710	7,440	8,210	8,200	8,880	6,650	5,380
	All ages	31,750	44,240	45,210	44,730	45,880	48,890	47,320	47,390	36,720	31,750

FB.2.41 Nursing applicants by age: England

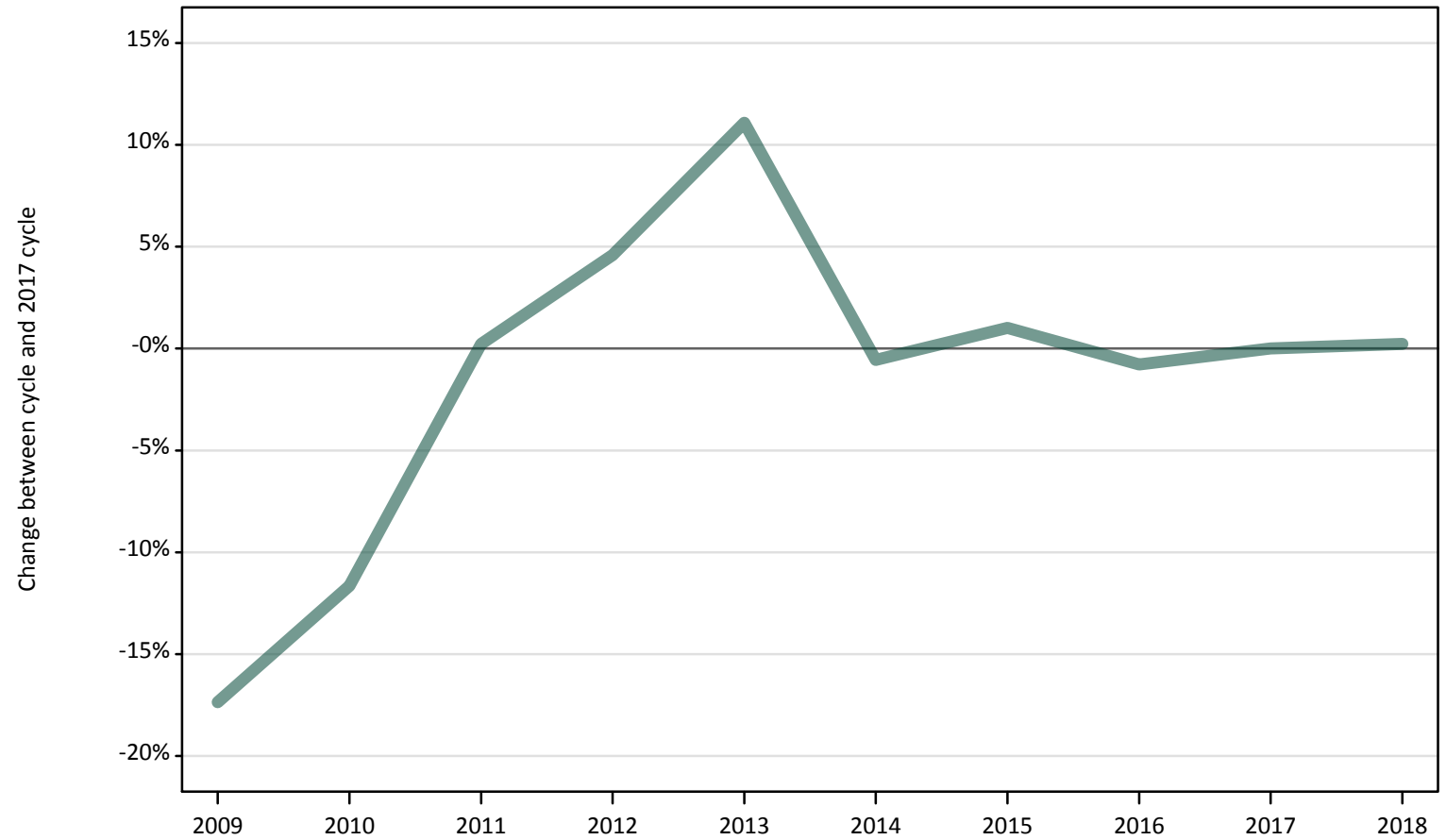
Difference between cycle and 2017 cycle

Domicile and age group		2009	2010	2011	2012	2013	2014	2015	2016	2017	2018
England	Under 18	1060%	1353%	547%	13%	27%	13%	7%	-27%	0%	0%
	18	-20%	-4%	-2%	3%	6%	9%	13%	11%	0%	-2%
	19	-17%	7%	17%	8%	22%	29%	24%	23%	0%	-12%
	20-24	-5%	35%	35%	37%	40%	52%	41%	32%	0%	-15%
	25-29	-11%	32%	36%	34%	39%	49%	40%	44%	0%	-21%
	30-34	-12%	37%	45%	40%	42%	46%	36%	42%	0%	-18%
	35 and over	-20%	22%	22%	16%	12%	23%	23%	33%	0%	-19%
	All ages	-14%	20%	23%	22%	25%	33%	29%	29%	0%	-14%

Note: The percentage change is not recorded in the above table for groups with fewer than 10 applicants in that cycle or in the 2017 cycle.

FB.2.42 Nursing applicants by age: Northern Ireland
Difference between cycle and 2017 cycle

- 18
- 19
- 20-24
- 25-29
- 30-34
- 35 and over



Note: The percentage change is not plotted in the above chart for groups with fewer than 500 applicants in any one cycle.

FB.2.43 Nursing applicants by age: Northern Ireland

Domicile and age group		2009	2010	2011	2012	2013	2014	2015	2016	2017	2018
Northern Ireland	Under 18	0	0	0	0	0	0	0	0	0	0
	18	740	790	900	930	990	890	900	890	890	900
	19	150	210	280	300	430	400	360	410	390	350
	20-24	210	360	460	440	800	760	720	700	650	570
	25-29	100	150	170	160	340	360	340	340	280	250
	30-34	40	60	80	70	180	180	180	190	170	150
	35 and over	40	90	90	70	190	160	180	200	180	160
	All ages	1,280	1,650	1,960	1,980	2,930	2,740	2,690	2,730	2,570	2,380

FB.2.44 Nursing applicants by age: Northern Ireland

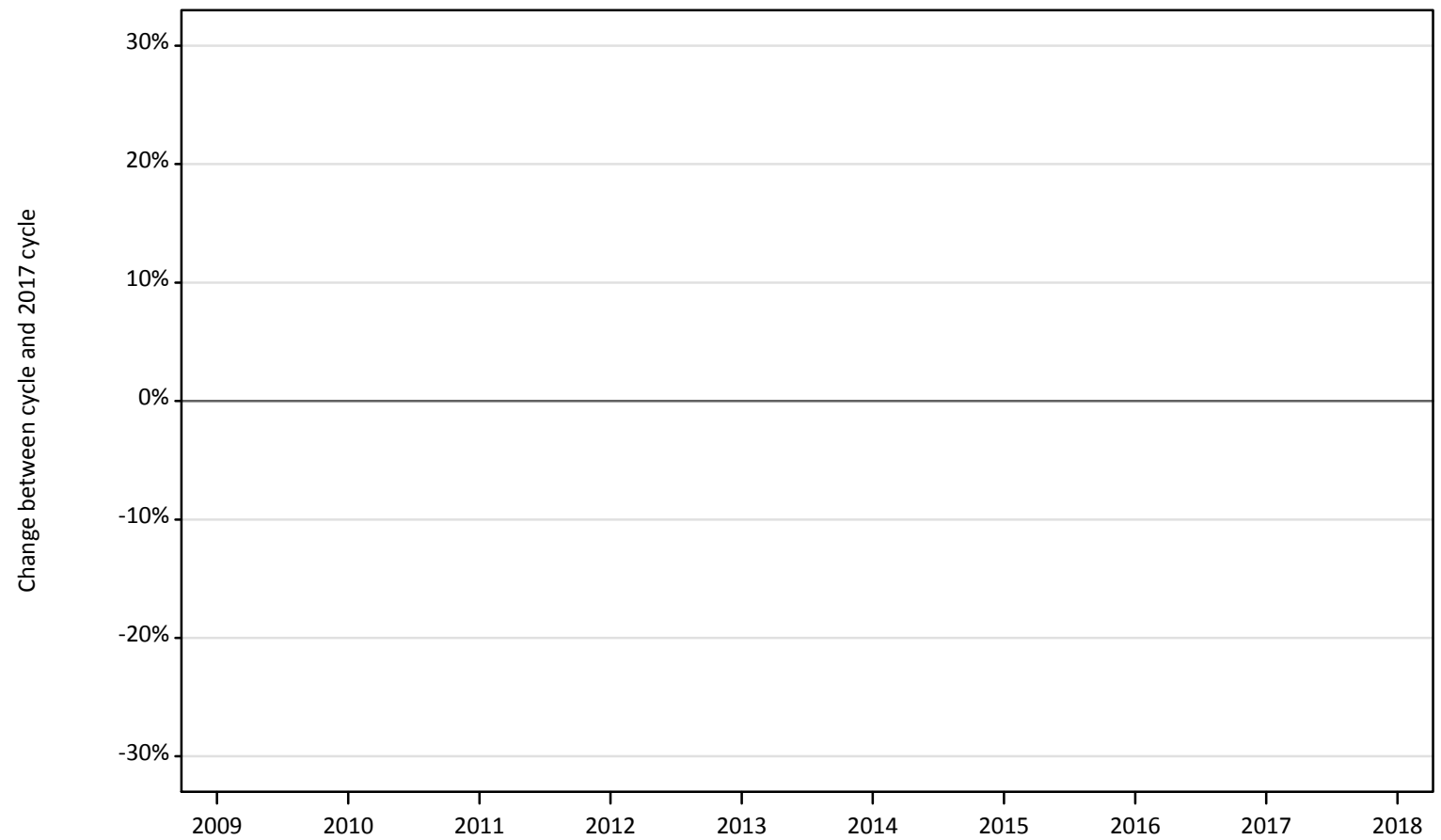
Difference between cycle and 2017 cycle

Domicile and age group		2009	2010	2011	2012	2013	2014	2015	2016	2017	2018
Northern Ireland	Under 18										
	18	-17%	-12%	0%	5%	11%	-1%	1%	-1%	0%	0%
	19	-61%	-47%	-29%	-23%	10%	2%	-8%	5%	0%	-10%
	20-24	-67%	-45%	-30%	-32%	23%	17%	11%	7%	0%	-12%
	25-29	-65%	-47%	-40%	-42%	22%	29%	21%	23%	0%	-9%
	30-34	-78%	-65%	-56%	-58%	8%	8%	4%	10%	0%	-14%
	35 and over	-77%	-50%	-53%	-62%	3%	-14%	1%	9%	0%	-11%
	All ages	-50%	-36%	-24%	-23%	14%	7%	5%	6%	0%	-7%

Note: The percentage change is not recorded in the above table for groups with fewer than 10 applicants in that cycle or in the 2017 cycle.

FB.2.45 Nursing applicants by age: Scotland
Difference between cycle and 2017 cycle

- 18
- 19
- 20-24
- 25-29
- 30-34
- 35 and over



Note: The percentage change is not plotted in the above chart for groups with fewer than 500 applicants in any one cycle.

FB.2.46 Nursing applicants by age: Scotland

Domicile and age group		2009	2010	2011	2012	2013	2014	2015	2016	2017	2018
Scotland	Under 18	10	90	60	40	40	50	40	40	50	30
	18	310	1,240	1,220	1,220	1,180	1,240	1,280	1,160	1,150	1,110
	19	80	590	560	560	550	570	520	540	460	480
	20-24	150	1,360	1,500	1,300	1,290	1,470	1,380	1,250	1,210	1,210
	25-29	60	800	810	750	740	890	920	860	850	860
	30-34	40	490	540	430	430	510	530	530	570	570
	35 and over	40	860	780	660	620	730	750	760	750	890
	All ages	680	5,440	5,470	4,960	4,840	5,450	5,410	5,140	5,020	5,150

FB.2.47 Nursing applicants by age: Scotland

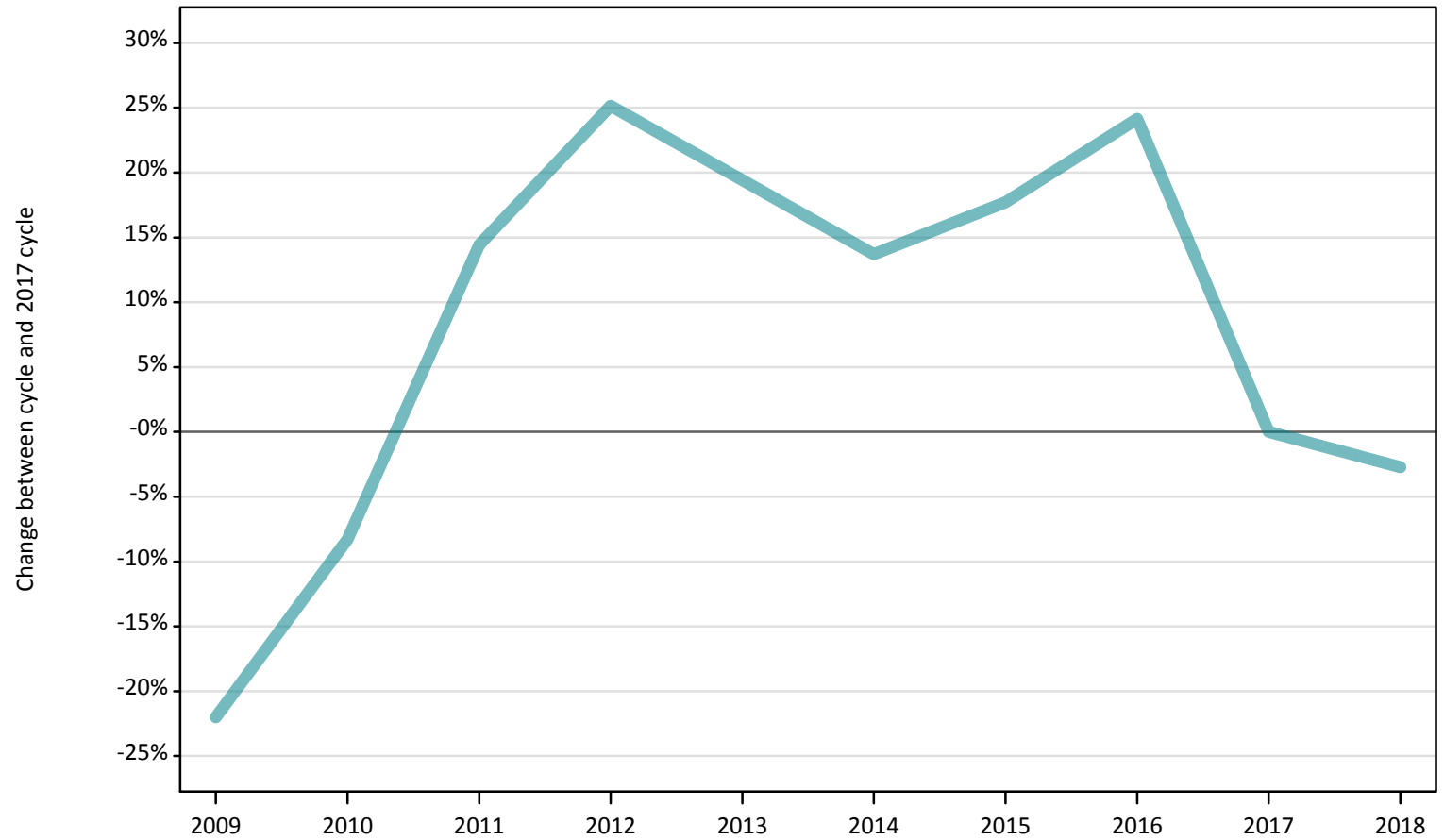
Difference between cycle and 2017 cycle

Domicile and age group		2009	2010	2011	2012	2013	2014	2015	2016	2017	2018
Scotland	Under 18	-83%	93%	24%	-9%	-13%	2%	-7%	-11%	0%	-26%
	18	-73%	8%	6%	7%	3%	8%	12%	1%	0%	-3%
	19	-82%	29%	22%	21%	18%	23%	12%	18%	0%	5%
	20-24	-87%	13%	24%	8%	7%	22%	15%	4%	0%	0%
	25-29	-93%	-5%	-4%	-11%	-13%	4%	8%	1%	0%	1%
	30-34	-94%	-13%	-6%	-25%	-25%	-10%	-7%	-6%	0%	0%
	35 and over	-95%	15%	4%	-12%	-17%	-2%	-0%	1%	0%	19%
	All ages	-86%	8%	9%	-1%	-4%	9%	8%	2%	0%	2%

Note: The percentage change is not recorded in the above table for groups with fewer than 10 applicants in that cycle or in the 2017 cycle.

FB.2.48 Nursing applicants by age: Wales
Difference between cycle and 2017 cycle

- 18
- 19
- 20-24
- 25-29
- 30-34
- 35 and over



Note: The percentage change is not plotted in the above chart for groups with fewer than 500 applicants in any one cycle.

FB.2.49 Nursing applicants by age: Wales

Domicile and age group		2009	2010	2011	2012	2013	2014	2015	2016	2017	2018
Wales	Under 18	0	0	0	0	0	0	0	0	0	0
	18	490	620	580	590	600	610	680	680	640	600
	19	200	280	360	320	310	310	320	350	320	340
	20-24	550	640	800	880	840	800	820	870	700	680
	25-29	300	400	500	510	520	520	520	510	490	460
	30-34	200	250	280	310	300	280	250	310	290	330
	35 and over	280	350	390	400	340	340	330	380	340	370
	All ages	2,020	2,540	2,900	3,010	2,910	2,850	2,920	3,100	2,780	2,780

FB.2.50 Nursing applicants by age: Wales

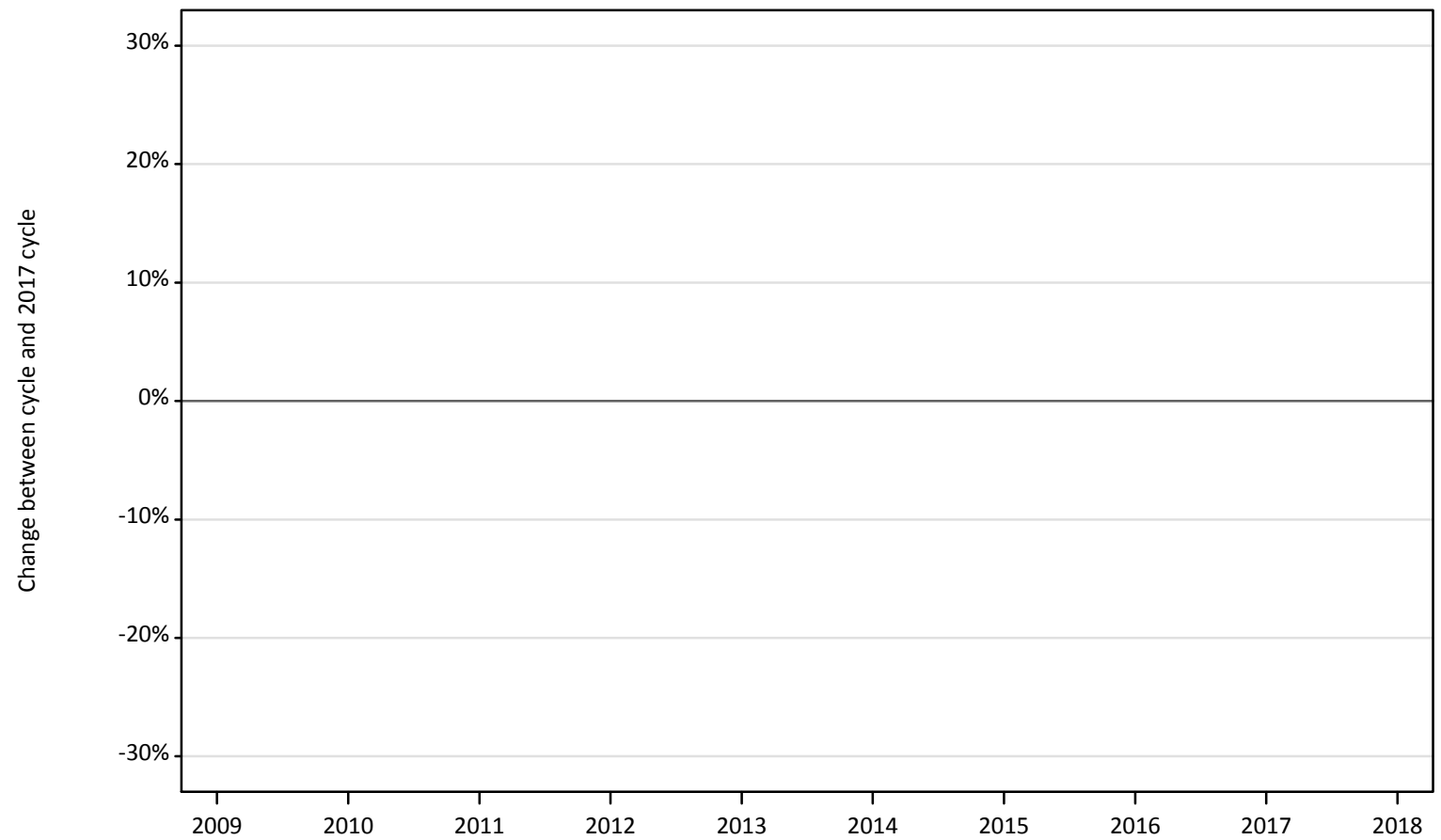
Difference between cycle and 2017 cycle

Domicile and age group		2009	2010	2011	2012	2013	2014	2015	2016	2017	2018
Wales	Under 18										
	18	-23%	-4%	-11%	-8%	-7%	-5%	5%	6%	0%	-7%
	19	-38%	-14%	10%	-1%	-6%	-4%	-2%	9%	0%	4%
	20-24	-22%	-8%	14%	25%	19%	14%	18%	24%	0%	-3%
	25-29	-38%	-18%	2%	6%	6%	6%	7%	6%	0%	-6%
	30-34	-32%	-14%	-4%	4%	3%	-5%	-14%	4%	0%	12%
	35 and over	-18%	3%	15%	19%	1%	0%	-1%	13%	0%	11%
	All ages	-28%	-9%	4%	8%	4%	2%	5%	11%	0%	-0%

Note: The percentage change is not recorded in the above table for groups with fewer than 10 applicants in that cycle or in the 2017 cycle.

FB.2.51 Nursing applicants by age: EU (excluding UK)
Difference between cycle and 2017 cycle

- 18
- 19
- 20-24
- 25-29
- 30-34
- 35 and over



Note: The percentage change is not plotted in the above chart for groups with fewer than 500 applicants in any one cycle.

FB.2.52 Nursing applicants by age: EU (excluding UK)

Domicile and age group		2009	2010	2011	2012	2013	2014	2015	2016	2017	2018
EU (excluding UK)	Under 18	30	80	90	70	80	80	70	60	60	50
	18	150	330	350	370	420	370	330	370	270	240
	19	130	340	350	360	400	400	380	390	310	290
	20-24	200	390	480	480	560	540	500	480	410	350
	25-29	60	130	180	160	180	180	160	140	90	80
	30-34	30	60	70	60	60	50	50	40	30	40
	35 and over	20	50	60	80	80	80	80	90	60	50
	All ages	610	1,380	1,570	1,560	1,770	1,700	1,560	1,580	1,210	1,090

FB.2.53 Nursing applicants by age: EU (excluding UK)

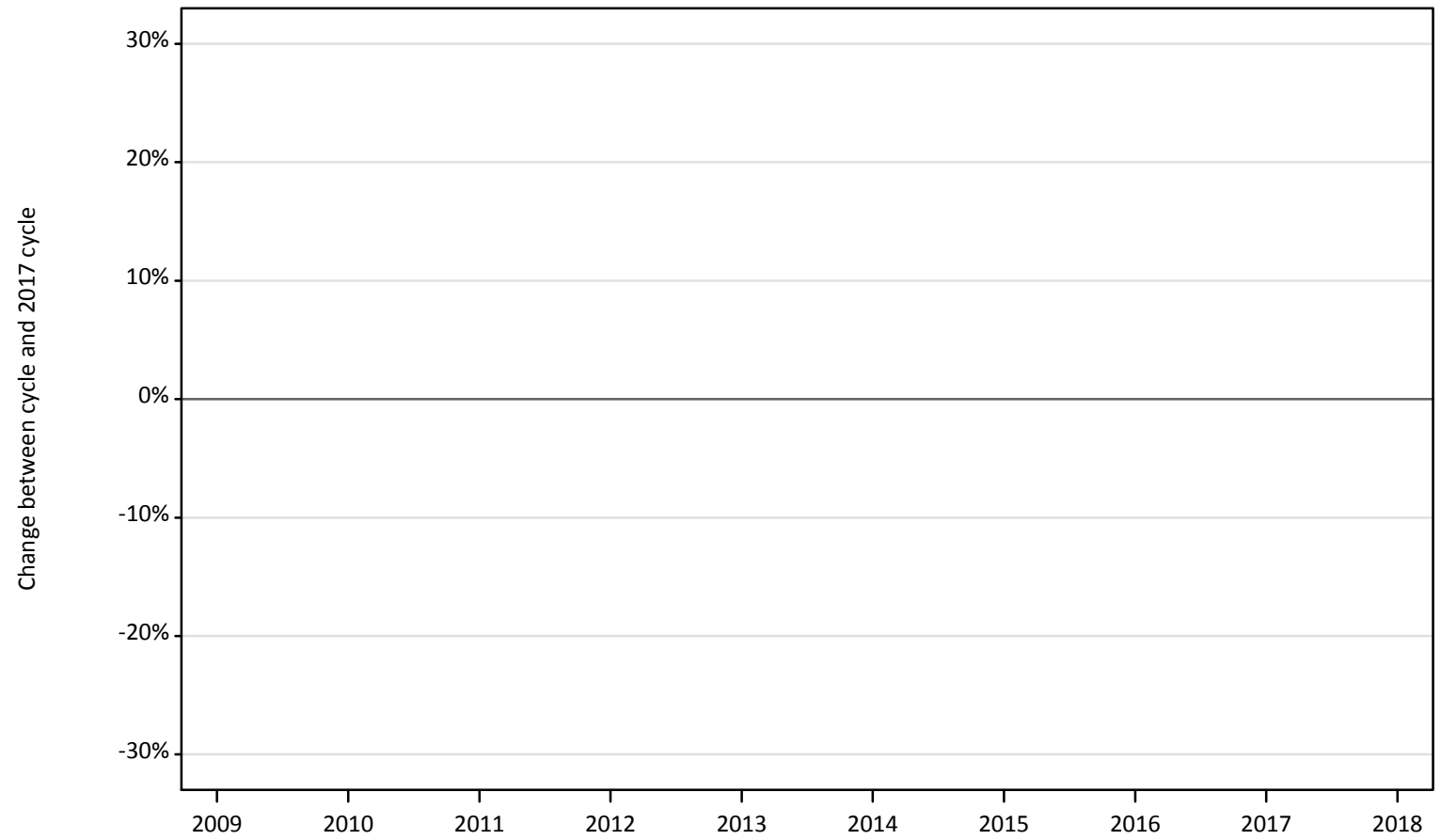
Difference between cycle and 2017 cycle

Domicile and age group		2009	2010	2011	2012	2013	2014	2015	2016	2017	2018
EU (excluding UK)	Under 18	-52%	36%	54%	25%	39%	39%	16%	14%	0%	-14%
	18	-42%	25%	32%	39%	59%	38%	23%	41%	0%	-9%
	19	-58%	12%	12%	15%	30%	30%	24%	27%	0%	-6%
	20-24	-52%	-4%	18%	17%	36%	34%	23%	18%	0%	-14%
	25-29	-34%	54%	114%	84%	108%	113%	91%	64%	0%	-12%
	30-34	-22%	94%	113%	88%	91%	69%	47%	28%	0%	9%
	35 and over	-60%	-19%	4%	32%	35%	33%	33%	49%	0%	-16%
	All ages	-50%	14%	30%	29%	46%	40%	29%	30%	0%	-10%

Note: The percentage change is not recorded in the above table for groups with fewer than 10 applicants in that cycle or in the 2017 cycle.

FB.2.54 Nursing applicants by age: Not EU
Difference between cycle and 2017 cycle

- 18
- 19
- 20-24
- 25-29
- 30-34
- 35 and over



Note: The percentage change is not plotted in the above chart for groups with fewer than 500 applicants in any one cycle.

FB.2.55 Nursing applicants by age: Not EU

Domicile and age group		2009	2010	2011	2012	2013	2014	2015	2016	2017	2018
Not EU	Under 18	0	10	10	10	10	10	10	10	10	10
	18	40	30	40	70	70	60	80	60	90	100
	19	40	50	40	40	40	50	50	50	60	70
	20-24	150	160	150	120	120	140	130	120	140	140
	25-29	110	100	110	80	90	60	100	70	80	80
	30-34	60	70	70	50	40	40	50	40	60	90
	35 and over	60	60	60	50	30	50	60	70	60	60
	All ages	460	480	480	430	390	430	470	410	510	560

FB.2.56 Nursing applicants by age: Not EU

Difference between cycle and 2017 cycle

Domicile and age group		2009	2010	2011	2012	2013	2014	2015	2016	2017	2018
Not EU	Under 18		-46%	-23%	-15%	-31%	8%	-23%	-31%	0%	-15%
	18	-56%	-60%	-56%	-14%	-24%	-27%	-12%	-29%	0%	15%
	19	-41%	-23%	-30%	-31%	-38%	-11%	-16%	-26%	0%	16%
	20-24	10%	15%	6%	-11%	-15%	2%	-5%	-15%	0%	3%
	25-29	31%	23%	33%	0%	8%	-24%	13%	-17%	0%	-1%
	30-34	-3%	16%	8%	-22%	-40%	-32%	-21%	-37%	0%	43%
	35 and over	-5%	-6%	-3%	-21%	-52%	-16%	-10%	6%	0%	-3%
	All ages	-9%	-5%	-6%	-15%	-23%	-15%	-7%	-19%	0%	10%

Note: The percentage change is not recorded in the above table for groups with fewer than 10 applicants in that cycle or in the 2017 cycle.

FB.2.57 Technical notes and definitions

Applicants have been able to submit applications for all 2018 courses since early September.

Applicants who submit their applications to UCAS by the January deadline are considered 'on time' applicants for the large majority of courses offered through UCAS. Some art and design courses have a later deadline of 24 March. Almost all main scheme applications have been received by the 24 March deadline.

This statistical release covers all Main Scheme applicants who submit their applications to UCAS by the March deadline, including those who have applied for courses with a 15 October or January deadline. Counts of RPAs (records of prior acceptance) are not included.

Subject group 'B7' covers courses related to nursing. These additional tables include applicants who made at least one choice to a 'B7' course by the January deadline. The primary deadline applicant statistics, which include applicants to all courses, are available on the UCAS website.

Counts of the number of applicants reported have been rounded to the nearest 10 applicants, this may result in instances where totals do not equal the sum of the components. Proportional changes have been rounded to the nearest whole percentage point.

In 2009, the Canary Islands classification changed from Not EU to EU (excluding UK). In order to present an accurate time series, the Canary Islands have been consistently classified as EU (excluding UK). This will result in differences with data published prior to 2010.

Age

This statistical release uses country-specific age definitions which align with the cut off points for school/college cohorts within the different administrations of the UK. For England and Wales ages are defined on the 31 August, for Northern Ireland on the 1 July and for Scotland on the 28 February the following year. Defining ages in this way matches the assignment of children to school cohorts. For applicants outside of the UK the cohort cut off for England and Wales has been used.

Applicant

A person who has made an application in the UCAS system during the cycle reported (including applications for deferred entry). Records of prior acceptance (RPAs) are excluded.

Application

An application to a course at a provider made by an applicant in the UCAS main scheme. Applicants may make up to five main scheme applications.

Country of provider

An applicant may be counted once for each provider country they have applied to in the main scheme. If an applicant has applied to providers in multiple countries then the applicant is counted once within each country of provider applied to.

Domicile

Declared area of permanent residence. The Channel Islands and the Isle of Man have been assigned as 'Not EU'.

Ethnic group

High level grouping of ethnic origin as declared by the applicant: 'Asian', 'Black', 'Mixed', 'White', 'Other', 'Unknown'.

First time applicant

An applicant that did not apply to the UCAS scheme in the previous cycle.

Main scheme

The main UCAS application scheme through which up to five providers/courses can be applied to. This opens in September and closes to new applications on 30 June the following year.

Reapplicant

An applicant that applied to the UCAS scheme in the previous cycle.

Sex

As declared by the applicant.

SIMD 2016

Scottish Index of Multiple Deprivation identifies small area concentrations of multiple deprivation across all of Scotland, providing a relative measure of deprivation among small areas (data zones). In this report, the SIMD 2016 has been used to group areas in each year in the times series.

POLAR3

Developed by HEFCE and classifies small areas across the UK into five groups, according to their level of young participation in HE. Each of these groups represents around 20 per cent of young people, and is ranked from quintile 1 (areas with the lowest young participation rates, considered as the most disadvantaged) to quintile 5 (highest young participation rates, considered most advantaged).

POLAR4

Developed by HEFCE and classifies small areas across the UK into five groups, according to their level of young participation in HE. Each of these groups represents around 20 per cent of young people, and is ranked from quintile 1 (areas with the lowest young participation rates, considered as the most disadvantaged) to quintile 5 (highest young participation rates, considered most advantaged). POLAR4 is the most recent version of the POLAR classification, and is available for the first time in UCAS? reporting since its launch in 2017.

Tariff Group of provider

Providers are grouped as higher, medium or lower tariff based on their average levels of attainment of their accepted applicants (summarised through UCAS Tariff points) in recent cycles. Each group of providers accounted for around a third of all UK 18 year old acceptances in recent cycles.

Subject group

The JACS3 classification used to classify courses into subject groups.