

March Deadline Analysis: Age

Nursing applicants by age at the 24 March deadline

FB.9.1 Nursing applicants by UK country of domicile and age group, 2018

All age groups

Country of Domicile	Age group				
	Under 18	18	19	20-24	25-29
England	20	8,280	3,860	7,370	4,020
Northern Ireland	0	900	350	570	250
Scotland	30	1,110	480	1,210	860
Wales	0	600	340	680	460

FB.9.2 Proportions of 18 year old nursing applicants by UK country of domicile

Domicile and age group		2018
England	18	1.4%
Northern Ireland	18	3.9%
Scotland	18	2.0%
Wales	18	1.7%

FB.9.3 Nursing applicants by domicile and age: England
Selected age groups: Difference between cycle and 2017 cycle

- 18
- 19
- 20
- 21-24
- 25 and over



Note: The percentage change is not plotted in the above chart for groups with fewer than 500 applicants in any one cycle.

FB.9.4 Nursing applicants by domicile and age: England

All age groups

Domicile and age group		2009	2010	2011	2012	2013	2014	2015	2016	2017	2018
England	Under 18	170	220	100	20	20	20	20	10	20	20
	18	6,790	8,120	8,280	8,740	8,980	9,250	9,590	9,410	8,460	8,280
	19	3,640	4,700	5,140	4,740	5,360	5,670	5,440	5,410	4,390	3,860
	20	2,320	3,170	3,150	3,250	3,280	3,590	3,430	3,100	2,610	2,260
	21-24	5,950	8,550	8,580	8,670	8,910	9,610	8,860	8,400	6,080	5,120
	25 and over	12,870	19,490	19,960	19,320	19,330	20,760	19,990	21,060	15,160	12,220
	All ages	31,750	44,240	45,210	44,730	45,880	48,890	47,320	47,390	36,720	31,750

FB.9.5 Nursing applicants by domicile and age: England

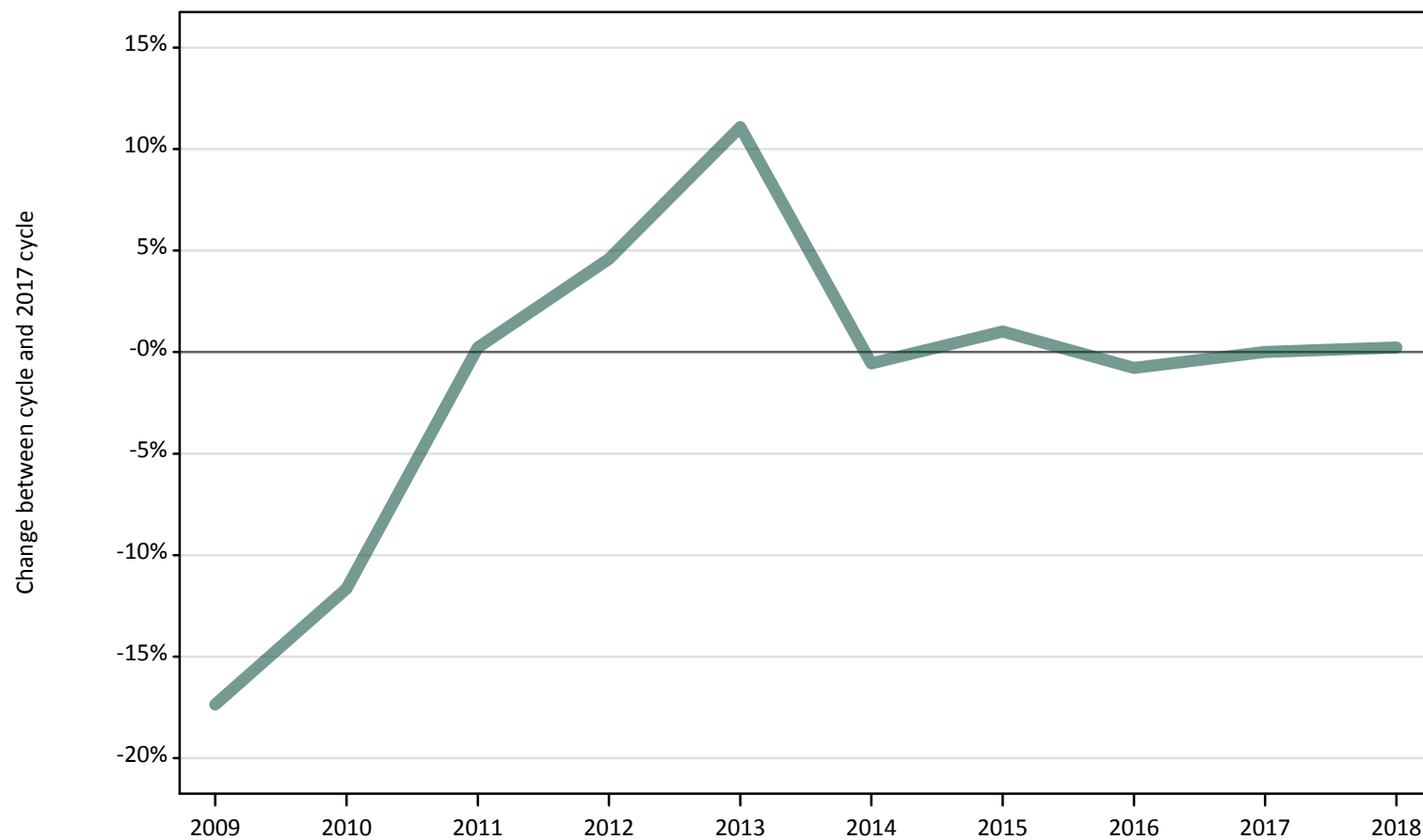
All age groups: Difference between cycle and 2017 cycle

Domicile and age group		2009	2010	2011	2012	2013	2014	2015	2016	2017	2018
England	Under 18	1060%	1353%	547%	13%	27%	13%	7%	-27%	0%	0%
	18	-20%	-4%	-2%	3%	6%	9%	13%	11%	0%	-2%
	19	-17%	7%	17%	8%	22%	29%	24%	23%	0%	-12%
	20	-11%	21%	21%	24%	26%	37%	31%	18%	0%	-14%
	21-24	-2%	41%	41%	42%	47%	58%	46%	38%	0%	-16%
	25 and over	-15%	29%	32%	27%	28%	37%	32%	39%	0%	-19%
	All ages	-14%	20%	23%	22%	25%	33%	29%	29%	0%	-14%

Note: The percentage change is not recorded in the above table for groups with fewer than 10 applicants in that cycle or in the 2017 cycle.

FB.9.6 Nursing applicants by domicile and age: Northern Ireland
Selected age groups: Difference between cycle and 2017 cycle

- 18
- 19
- 20
- 21-24
- 25 and over



Note: The percentage change is not plotted in the above chart for groups with fewer than 500 applicants in any one cycle.

FB.9.7 Nursing applicants by domicile and age: Northern Ireland

All age groups

Domicile and age group		2009	2010	2011	2012	2013	2014	2015	2016	2017	2018
Northern Ireland	Under 18	0	0	0	0	0	0	0	0	0	0
	18	740	790	900	930	990	890	900	890	890	900
	19	150	210	280	300	430	400	360	410	390	350
	20	70	110	140	160	240	240	230	210	210	200
	21-24	140	250	320	280	560	520	500	490	450	370
	25 and over	180	300	330	300	710	700	700	730	630	560
	All ages	1,280	1,650	1,960	1,980	2,930	2,740	2,690	2,730	2,570	2,380

FB.9.8 Nursing applicants by domicile and age: Northern Ireland

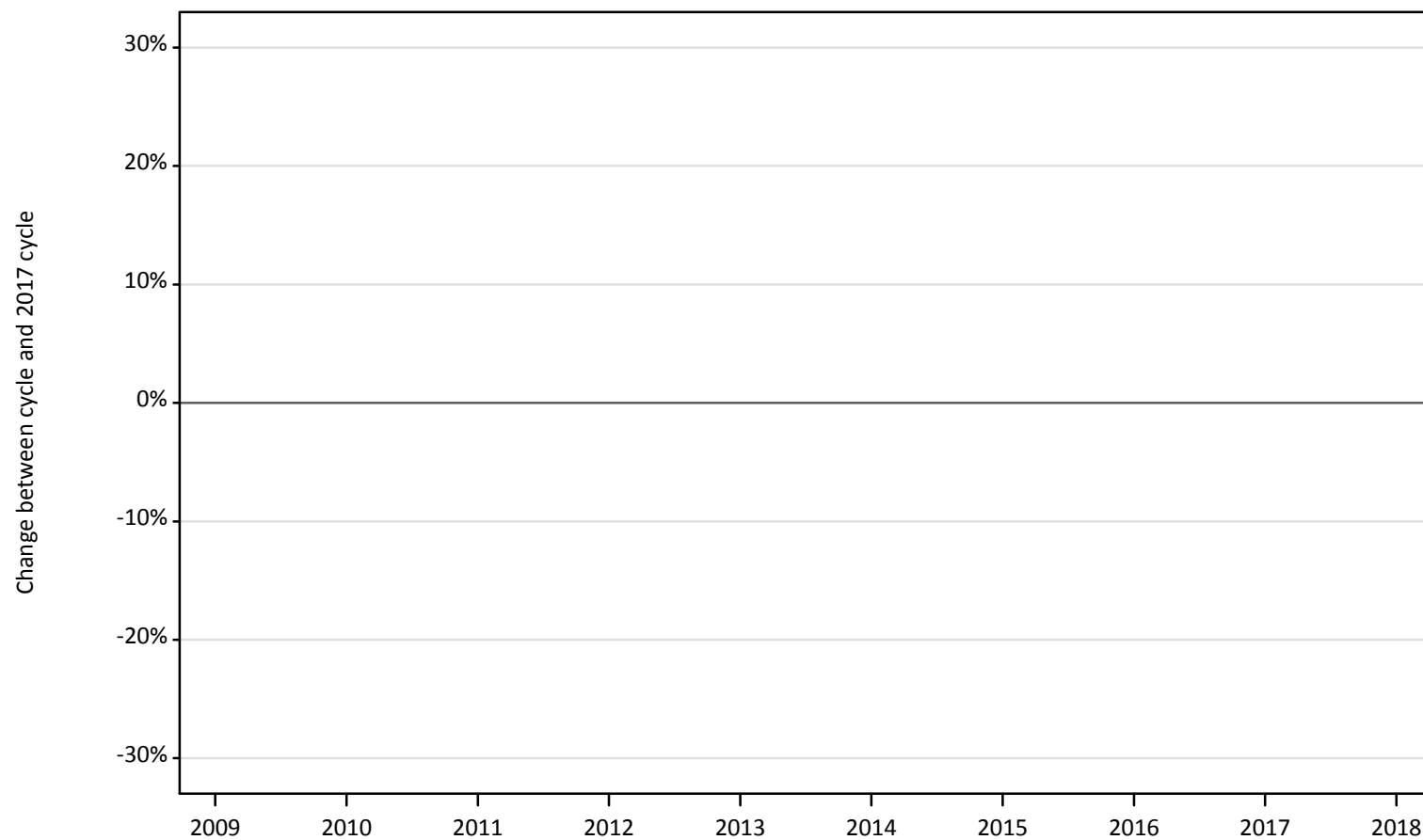
All age groups: Difference between cycle and 2017 cycle

Domicile and age group		2009	2010	2011	2012	2013	2014	2015	2016	2017	2018
Northern Ireland	Under 18										
	18	-17%	-12%	0%	5%	11%	-1%	1%	-1%	0%	0%
	19	-61%	-47%	-29%	-23%	10%	2%	-8%	5%	0%	-10%
	20	-65%	-46%	-33%	-24%	18%	15%	12%	0%	0%	-1%
	21-24	-68%	-45%	-28%	-36%	25%	18%	11%	10%	0%	-18%
	25 and over	-72%	-53%	-48%	-52%	13%	11%	10%	16%	0%	-11%
	All ages	-50%	-36%	-24%	-23%	14%	7%	5%	6%	0%	-7%

Note: The percentage change is not recorded in the above table for groups with fewer than 10 applicants in that cycle or in the 2017 cycle.

FB.9.9 Nursing applicants by domicile and age: Scotland
Selected age groups: Difference between cycle and 2017 cycle

- 18
- 19
- 20
- 21-24
- 25 and over



Note: The percentage change is not plotted in the above chart for groups with fewer than 500 applicants in any one cycle.

FB.9.10 Nursing applicants by domicile and age: Scotland

All age groups

Domicile and age group		2009	2010	2011	2012	2013	2014	2015	2016	2017	2018
Scotland	Under 18	10	90	60	40	40	50	40	40	50	30
	18	310	1,240	1,220	1,220	1,180	1,240	1,280	1,160	1,150	1,110
	19	80	590	560	560	550	570	520	540	460	480
	20	60	330	420	340	340	360	340	330	320	320
	21-24	100	1,030	1,080	960	950	1,110	1,050	920	880	880
	25 and over	130	2,160	2,130	1,840	1,790	2,130	2,190	2,150	2,170	2,310
	All ages	680	5,440	5,470	4,960	4,840	5,450	5,410	5,140	5,020	5,150

FB.9.11 Nursing applicants by domicile and age: Scotland

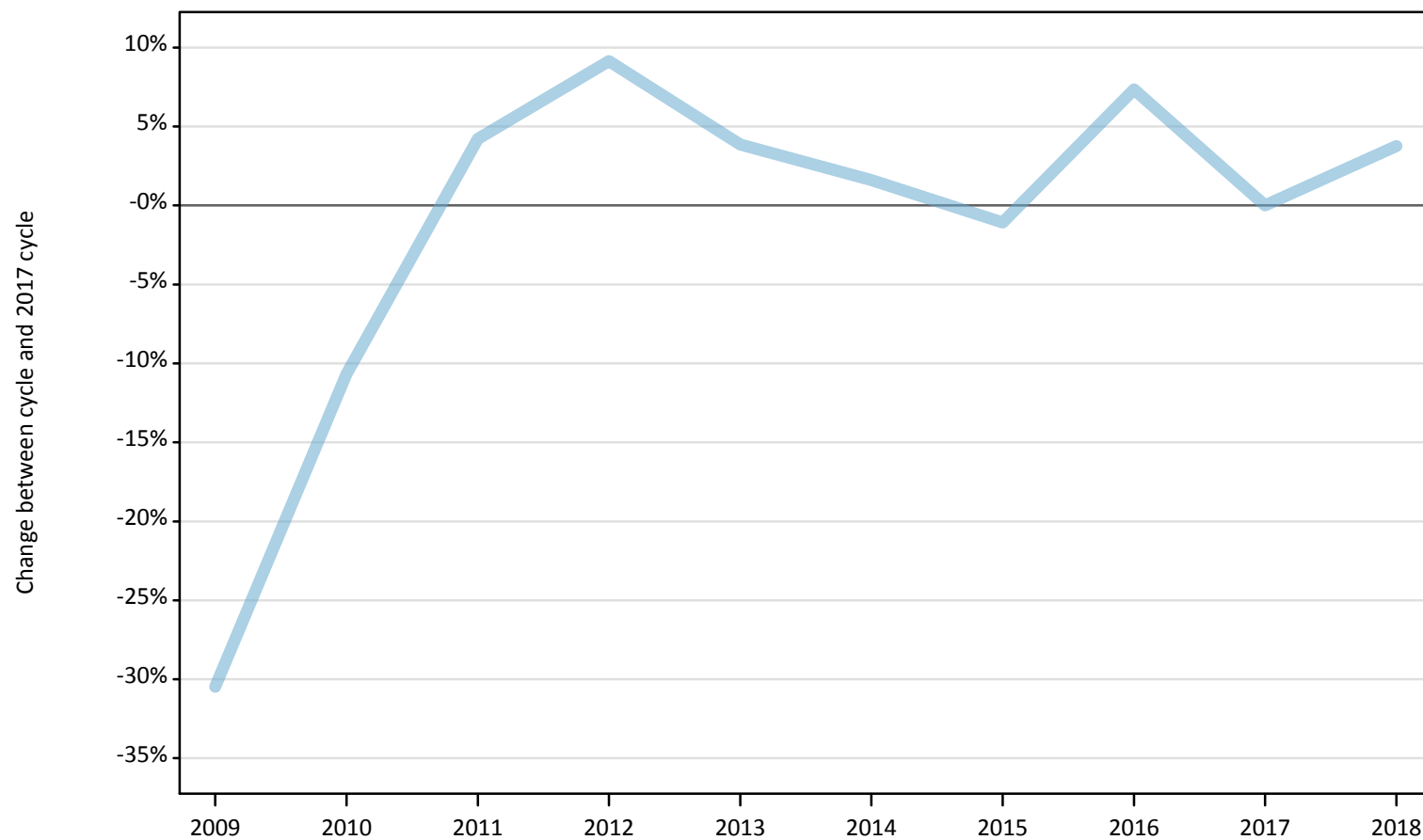
All age groups: Difference between cycle and 2017 cycle

Domicile and age group		2009	2010	2011	2012	2013	2014	2015	2016	2017	2018
Scotland	Under 18	-83%	93%	24%	-9%	-13%	2%	-7%	-11%	0%	-26%
	18	-73%	8%	6%	7%	3%	8%	12%	1%	0%	-3%
	19	-82%	29%	22%	21%	18%	23%	12%	18%	0%	5%
	20	-83%	3%	31%	7%	6%	12%	4%	4%	0%	0%
	21-24	-89%	17%	22%	8%	8%	26%	18%	4%	0%	-0%
	25 and over	-94%	-0%	-2%	-15%	-17%	-2%	1%	-1%	0%	7%
	All ages	-86%	8%	9%	-1%	-4%	9%	8%	2%	0%	2%

Note: The percentage change is not recorded in the above table for groups with fewer than 10 applicants in that cycle or in the 2017 cycle.

FB.9.12 Nursing applicants by domicile and age: Wales
Selected age groups: Difference between cycle and 2017 cycle

- 18
- 19
- 20
- 21-24
- 25 and over



Note: The percentage change is not plotted in the above chart for groups with fewer than 500 applicants in any one cycle.

FB.9.13 Nursing applicants by domicile and age: Wales

All age groups

Domicile and age group		2009	2010	2011	2012	2013	2014	2015	2016	2017	2018
Wales	Under 18	0	0	0	0	0	0	0	0	0	0
	18	490	620	580	590	600	610	680	680	640	600
	19	200	280	360	320	310	310	320	350	320	340
	20	130	160	210	230	190	190	210	200	190	190
	21-24	420	490	600	650	640	610	610	670	510	500
	25 and over	780	1,000	1,160	1,220	1,160	1,130	1,100	1,200	1,120	1,160
	All ages	2,020	2,540	2,900	3,010	2,910	2,850	2,920	3,100	2,780	2,780

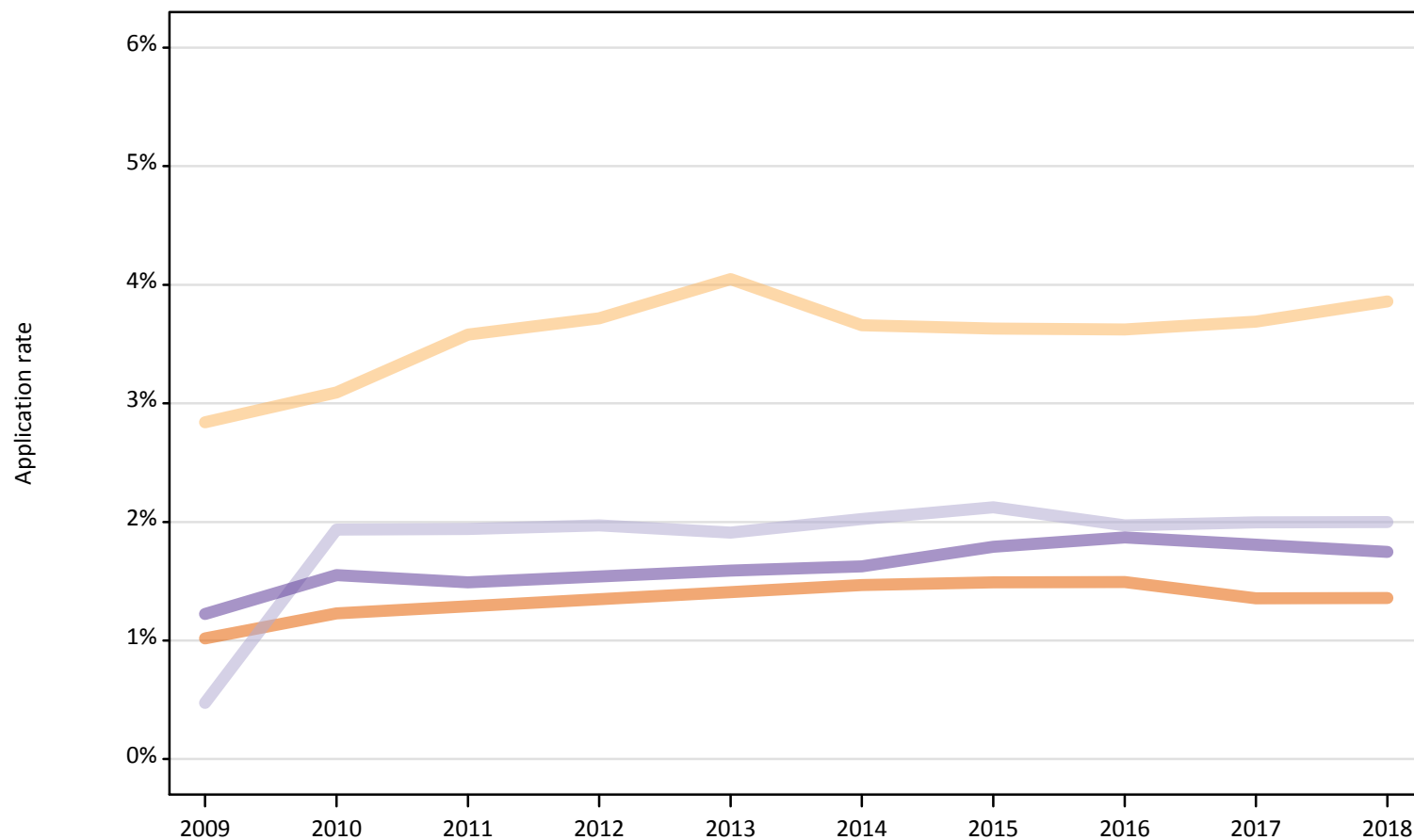
FB.9.14 Nursing applicants by domicile and age: Wales

All age groups: Difference between cycle and 2017 cycle

Domicile and age group		2009	2010	2011	2012	2013	2014	2015	2016	2017	2018
Wales	Under 18										
	18	-23%	-4%	-11%	-8%	-7%	-5%	5%	6%	0%	-7%
	19	-38%	-14%	10%	-1%	-6%	-4%	-2%	9%	0%	4%
	20	-32%	-19%	7%	20%	1%	-4%	11%	5%	0%	-4%
	21-24	-18%	-4%	17%	27%	27%	20%	20%	31%	0%	-2%
	25 and over	-30%	-11%	4%	9%	4%	2%	-1%	7%	0%	4%
	All ages	-28%	-9%	4%	8%	4%	2%	5%	11%	0%	-0%

Note: The percentage change is not recorded in the above table for groups with fewer than 10 applicants in that cycle or in the 2017 cycle.

FB.9.15 Nursing application rates for 18 year olds by UK country of domicile
18 year old applicants as a proportion of the 18 year old population



FB.9.16 Nursing application rates for 18 year olds by UK country of domicile
18 year old applicants as a proportion of the 18 year old population

Domicile and age group		2009	2010	2011	2012	2013	2014	2015	2016	2017	2018
England	18	1.0%	1.2%	1.3%	1.3%	1.4%	1.5%	1.5%	1.5%	1.4%	1.4%
Northern Ireland	18	2.8%	3.1%	3.6%	3.7%	4.0%	3.7%	3.6%	3.6%	3.7%	3.9%
Scotland	18	0.5%	1.9%	1.9%	2.0%	1.9%	2.0%	2.1%	2.0%	2.0%	2.0%
Wales	18	1.2%	1.6%	1.5%	1.5%	1.6%	1.6%	1.8%	1.9%	1.8%	1.7%

FB.9.17 Technical notes and definitions

Applicants have been able to submit applications for all 2018 courses since early September.

Applicants who submit their applications to UCAS by the January deadline are considered 'on time' applicants for the large majority of courses offered through UCAS. Some art and design courses have a later deadline of 24 March. Almost all main scheme applications have been received by the 24 March deadline.

This statistical release covers all Main Scheme applicants who submit their applications to UCAS by the March deadline, including those who have applied for courses with a 15 October or January deadline. Counts of RPAs (records of prior acceptance) are not included.

Subject group 'B7' covers courses related to nursing. These additional tables include applicants who made at least one choice to a 'B7' course by the January deadline. The primary deadline applicant statistics, which include applicants to all courses, are available on the UCAS website.

Counts of the number of applicants reported have been rounded to the nearest 10 applicants, this may result in instances where totals do not equal the sum of the components. Proportional changes have been rounded to the nearest whole percentage point.

In Scotland there is a substantial component (around one third of young full-time higher education) where admissions are not processed through UCAS. Consequently, for Scotland, this report reflects the trends in applications that are recruited through UCAS and not, as elsewhere in the UK, full-time undergraduate study in general.

Age

This statistical release uses country-specific age definitions which align with the cut off points for school/college cohorts within the different administrations of the UK. For England and Wales ages are defined on the 31 August, for Northern Ireland on the 1 July and for Scotland on the 28 February the following year. Defining ages in this way matches the assignment of children to school cohorts. For applicants outside of the UK the cohort cut off for England and Wales has been used.

Applicant

A person who has made an application in the UCAS system during the cycle reported (including applications for deferred entry). Records of prior acceptance (RPAs) are excluded.

Application

An application to a course at a provider made by an applicant in the UCAS main scheme. Applicants may make up to five main scheme applications.

Country of provider

An applicant may be counted once for each provider country they have applied to in the main scheme. If an applicant has applied to providers in multiple countries then the applicant is counted once within each country of provider applied to.

Domicile

Declared area of permanent residence. The Channel Islands and the Isle of Man have been assigned as 'Not EU'.

Ethnic group

High level grouping of ethnic origin as declared by the applicant: 'Asian', 'Black', 'Mixed', 'White', 'Other', 'Unknown'.

First time applicant

An applicant that did not apply to the UCAS scheme in the previous cycle.

Main scheme

The main UCAS application scheme through which up to five providers/courses can be applied to. This opens in September and closes to new applications on 30 June the following year.

Reapplicant

An applicant that applied to the UCAS scheme in the previous cycle.

Sex

As declared by the applicant.

SIMD 2016

Scottish Index of Multiple Deprivation identifies small area concentrations of multiple deprivation across all of Scotland, providing a relative measure of deprivation among small areas (data zones). In this report, the SIMD 2016 has been used to group areas in each year in the times series.

POLAR3

Developed by HEFCE and classifies small areas across the UK into five groups, according to their level of young participation in HE. Each of these groups represents around 20 per cent of young people, and is ranked from quintile 1 (areas with the lowest young participation rates, considered as the most disadvantaged) to quintile 5 (highest young participation rates, considered most advantaged).

POLAR4

Developed by HEFCE and classifies small areas across the UK into five groups, according to their level of young participation in HE. Each of these groups represents around 20 per cent of young people, and is ranked from quintile 1 (areas with the lowest young participation rates, considered as the most disadvantaged) to quintile 5 (highest young participation rates, considered most advantaged). POLAR4 is the most recent version of the POLAR classification, and is available for the first time in UCAS? reporting since its launch in 2017.

Tariff Group of provider

Providers are grouped as higher, medium or lower tariff based on their average levels of attainment of their accepted applicants (summarised through UCAS Tariff points) in recent cycles. Each group of providers accounted for around a third of all UK 18 year old acceptances in recent cycles.

Subject group

The JACS3 classification used to classify courses into subject groups.