



# Adviser Track Reports Samples

# Contents

Applicant Progression CSVs	2
Progression Report Summary Page	3
Progression Report	6
Competitors Report Summary Page	23
Competitors Report	26

## Progression Report

The Progression Report contains data from the previous application cycle

Where the Final Destination Report will show the course and provider any given applicant is placed with, the Progression Report is more detailed. It shows any other offers the applicant received, and also includes a key statistic summary, making it easier to interpret and share your results.

The Progression Report is released in two parts, so you can access as much information as soon as possible, and see a dashboard of key statistics.

- Part one includes the individual choice and applicant data from your centre in CSV files along with a in depth set of statistics about your students progression. It is available from early November.
- Part two includes a report detailing the progression statistics for the whole sector. It is available from early January each admissions cycle.

**The following pages contain an example of:**

- The applicant and choice level CSV files
- Progression Report Part 1 - Centre Data

***Part 2 - National Sector Data is in the same format but based on data from the entire FE sector.***



# Applicant Progression CSVs

## Choice Level Report

This report shows every choice made by an applicant in the previous application cycle, the decisions they received from providers and any replies made by the applicant. This includes choices made through Clearing and Extra

A	B	C	D	E	F	G	H	I	J	K	L	M	N	O	P	Q	R	S	
1	Apply cen Year	Applicant ID	Application number	Deadline	Main sche	Direct to C	RPA	Withdraw	Route	Provider c	Provider r	Campus c	Course co	Course name	JACS3 sub	JACS3 prir	Deferr	Provider decision	
2	0	2017 BE1866056C7FAC	BACA23BEE28083BD0C	after Oct 1	1	0	0	0	Main sche M40	The Manchester Met	M102		Economics (Foundat	Group M L M1 - Law &	0	Conditional			
3	0	2017 BE1866056C7FAC	BACA23BEE28083BD0C	after Oct 1	1	0	0	0	Main sche M40	The Manchester Met	8R64		Economics and Bank Y Combin	Y Combs c	0	Unconditional			
4	0	2017 98AF76FB6176A33	83746C9C864D625F9F8	after Oct 1	1	0	0	0	Main sche L23	University of Leeds	W290		Graphic and Commu	Group W (W2 - Desig	0	Unconditional			
5	0	2017 98AF76FB6176A33	83746C9C864D625F9F8	after Oct 1	1	0	0	0	Main sche M40	The Manchester Met	W210		Graphic Design	Group W (W2 - Desig	0	Reject			
6	0	2017 98AF76FB6176A33	83746C9C864D625F9F8	after Oct 1	1	0	0	0	Main sche L28	Leeds Arts Universit	W900		Creative Advertising	Group W (W9 - Othe	0	Other			
7	0	2017 F3E93CA73787A0C	AD3E3D585ED389E269	after Mar	1	0	0	0	Main sche L51	Liverpool John Moor	N500		Marketing	Group N B N5 - Marki	0	Unconditional			
8	0	2017 F3E93CA73787A0C	AD3E3D585ED389E269	after Mar	1	0	0	0	Main sche C55	University of Chester	N500		Marketing Manager	Group N B N5 - Marki	0	Unconditional			
9	0	2017 F3E93CA73787A0C	AD3E3D585ED389E269	after Mar	1	0	0	0	Main sche M40	The Manchester Met	N502		Marketing Manager	Group N B N5 - Marki	0	Unconditional			
10	0	2017 F3E93CA73787A0C	AD3E3D585ED389E269	after Mar	1	0	0	0	Main sche L41	The University of Liv	N500		Marketing	Group N B N5 - Marki	0	Reject			
11	0	2017 B63750C2F8AEC19	941CEE1DA0844906167	after Jan 1	1	0	0	0	Main sche M40	The Manchester Met	M317		English and Multime	Y Combin	Y Combs c	0	Unconditional		
12	0	2017 B63750C2F8AEC19	941CEE1DA0844906167	after Jan 1	1	0	0	0	Main sche L27	Leeds Beckett Unive	L200		Politics	Group L S L2 - Politic	0	Unconditional			
13	0	2017 B63750C2F8AEC19	941CEE1DA0844906167	after Jan 1	1	0	0	0	Main sche L27	Leeds Beckett Unive	P500		Journalism	Group P P M5 - Journ	0	Reject			
14	0	2017 B63750C2F8AEC19	941CEE1DA0844906167	after Jan 1	1	0	0	0	Main sche L23	University of Leeds	Q190		English, Language ar	Group Q L Q1 - Lingu	0	Reject			
15	0	2017 B63750C2F8AEC19	941CEE1DA0844906167	after Jan 1	1	0	0	0	Main sche L27	Leeds Beckett Unive	Q3W8		English with Creativ	Group Q L Q3 - Engli	0	Unconditional			
16	0	2017 21D549A692CD177	F9F9AC9DE1485COCF6	by Oct 15	1	0	0	0	Main sche L23	University of Leeds	B700		Nursing (Adult)	Group B Si B7 - Nursi	0	Other			
17	0	2017 21D549A692CD177	F9F9AC9DE1485COCF6	by Oct 15	1	0	0	0	Main sche C55	University of Chester	B740		Adult Nursing	Group B Si B7 - Nursi	0	Unconditional			
18	0	2017 21D549A692CD177	F9F9AC9DE1485COCF6	by Oct 15	1	0	0	0	Main sche S18	The University of Sh	B991		Health and Human S	Group B Si B9 - Other	0	Other			
19	0	2017 21D549A692CD177	F9F9AC9DE1485COCF6	by Oct 15	1	0	0	0	Main sche M20	The University of Ma	B740		Adult Nursing	Group B Si B7 - Nursi	0	Other			
20	0	2017 21D549A692CD177	F9F9AC9DE1485COCF6	by Oct 15	1	0	0	0	Main sche S21	Sheffield Hallam Uni	B740		Nursing (Adult)	Group B Si B7 - Nursi	0	Other			
21	0	2017 1546861D1DCE62	25336E08C6BF2DBF41	after Oct 1	1	0	0	0	Main sche E84	University C	F600		Geology	Group F Pl F6 - Geolo	0	Unconditional			
22	0	2017 1546861D1DCE62	25336E08C6BF2DBF41	after Oct 1	1	0	0	0	Main sche B78	University of Bristol	F600		Geology	Group F Pl F6 - Geolo	0	Unconditional			
23	0	2017 1546861D1DCE62	25336E08C6BF2DBF41	after Oct 1	1	0	0	0	Main sche S36	University of St And	F600		Geology	Group F Pl F6 - Geolo	0	Reject			
24	0	2017 1546861D1DCE62	25336E08C6BF2DBF41	after Oct 1	1	0	0	0	Main sche L23	University of Leeds	F600		Geological Sciences	Group F Pl F6 - Geolo	0	Unconditional			
25	0	2017 1546861D1DCE62	25336E08C6BF2DBF41	after Oct 1	1	0	0	0	Main sche L41	The University of Liv	F600		Geology	Group F Pl F6 - Geolo	0	Unconditional			

## Applicant Level Report

This report shows each applicant and their accepted place. This includes places secured through Clearing and Extra. It

also shows if any applicants were unplaced at the end of the cycle.

A	B	C	D	E	F	G	H	I	J	K	L	M	N	O	P	Q	R	S	T	U
1	Apply cen Year	Applicant ID	Applicatio	Age (at en	Sex	Region	Area C	Deadline applied by	Main Dire	RPA Wit	Placed	Entry route	Provider c	Provider name (placed)	Camp	Course	Course name (pla	Deferre		
2	0	2017 BE1866056C7FAC	BACA23BEE28083BD0C	22	Male	North W	Chesh	after Oct 15, by Jan 15	1	0	0	0	1	Firm choice	M40		The Manchester Metropolitan Univer	8R64	Economics and Ba	
3	0	2017 98AF76FB6176A33	83746C9C864D625F9F8	19	Female	North W	Chesh	after Oct 15, by Jan 15	1	0	0	0	1	Firm choice	L23		University of Leeds	W290	Graphic and Comm	
4	0	2017 F3E93CA73787A0C	AD3E3D585ED389E269	19	Female	North W	Chesh	after Mar 24, by Jun 30	1	0	0	0	0	Unplaced						
5	0	2017 B63750C2F8AEC19	941CEE1DA0844906167	19	Female	North W	Chesh	after Jan 15, by Mar 24	1	0	0	0	1	Firm choice	L27		Leeds Beckett University	L200	Politics	
6	0	2017 21D549A692CD177	F9F9AC9DE1485COCF6	19	Female	North W	Chesh	by Oct 15 deadline	1	0	0	0	1	Firm choice	C55		University of Chester	B740	Adult Nursing	
7	0	2017 1546861D1DCE62	25336E08C6BF2DBF41	19	Male	North W	Chesh	after Oct 15, by Jan 15	1	0	0	0	1	Firm choice	L23		University of Leeds	F600	Geological Scienc	
8	0	2017 6D7C70965D6332D195D		19	Female	North W	Chesh	after Oct 15, by Jan 15	1	0	0	0	1	Firm choice	S85		University of Surrey	W410	Acting	
9	0	2017 487C71093F6	CA0A5A97	19	Female	North W	Chesh	after Oct 15, by Jan 15	1	0	0	0	1	Firm choice	L23		University of Leeds	F7M0	Sustainability and	
10	0	2017 D8EFA82840C	D6150D26	19	Female	North W	Chesh	after Oct 15, by Jan 15	1	0	0	0	1	Firm choice	D39		University of Derby	N190	Information Techn	
11	0	2017 CF92DF6C67E	1D368D5F	19	Male	North W	Chesh	by Oct 15 deadline	1	0	0	0	1	Firm choice	W20		The University of Warwick	9RL1	Modern Language	
12	0	2017 A3EA4598647	12EB4297C	19	Male	London	City o	after Oct 15, by Jan 15	1	0	0	0	1	Firm choice	K12		Keele University	G400	Computer Science	
13	0	2017 DB868911982	4F26094D	19	Female	North W	Chesh	after Oct 15, by Jan 15	1	0	0	0	1	Firm choice	M20		The University of Manchester	NR12	Modern Language	
14	0	2017 F9E60F4AF78	10D2032A	19	Male	North W	Chesh	after Oct 15, by Jan 15	1	0	0	0	1	Insurance choic	L34		University of Leicester	H300	Mechanical Engin	
15	0	2017 E65E3DAC164	23EF9ACD	19	Male	Wales	Flintsl	by Oct 15 deadline	1	0	0	0	1	Insurance choic	W20		The University of Warwick	G100	Mathematics	
16	0	2017 D5FCF9C3438	08BB83ACB	19	Female	North W	Chesh	by Oct 15 deadline	1	0	0	0	1	Firm choice	C05		University of Cambridge	K V600	Theology, Religio	
17	0	2017 71E98474F5E	37C6C40A	19	Female	Wales	Wrexh	after Oct 15, by Jan 15	1	0	0	0	1	Firm choice	L41		The University of Liverpool	N401	Accounting and Fi	
18	0	2017 94692437F14	98C1FA26	19	Female	North W	Chesh	after Oct 15, by Jan 15	1	0	0	0	1	Firm choice	B16		University of Bath	F145	Chemistry with M	
19	0	2017 4C3B18F7F42	A9A6499F	20	Female	Wales	Wrexh	after Mar 24, by Jun 30	1	0	0	0	1	Firm choice	N84		The University of Nottingham	Q300	English	
20	0	2017 75657B507C1	F0BE871E	19	Female	North W	Chesh	after Oct 15, by Jan 15	1	0	0	0	1	Firm choice	B32		University of Birmingham	N290	Applied Golf Man	
21	0	2017 FF278AD0C41	59A5D2E6	19	Male	Wales	Wrexh	after Oct 15, by Jan 15	1	0	0	0	1	Main scheme C	L41		The University of Liverpool	FF78	Geography and O	
22	0	2017 882766FEC6	E48ED53B	19	Female	North W	Chesh	after Mar 24, by Jun 30	1	0	0	0	1	Firm choice	L14		Lancaster University	Q3W8	English Literature	
23	0	2017 29EC519FFCD	6D0FE14C	19	Female	North W	Chesh	after Oct 15, by Jan 15	1	0	0	0	1	Firm choice	B32		University of Birmingham	C800	Psychology	
24	0	2017 D443191DC7E	36E04F697	19	Male	North W	Chesh	after Oct 15, by Jan 15	1	0	0	0	1	Firm choice	N21		Newcastle University	B940	Biomedical Scienc	
25	0	2017 D11855E8AC3	3A39B586	20	Female	North W	Chesh	after Oct 15, by Jan 15	1	0	0	0	1	Firm choice	C15		Cardiff University	B160	Physiotherapy	

# Apply Centre Progression Summary Page

UCAS

## Confidential analysis for Apply centres 00000 Example Sixth Form College

Changes in brackets refer to the previous cycle. PP refers to a percentage point change.

Cycle:

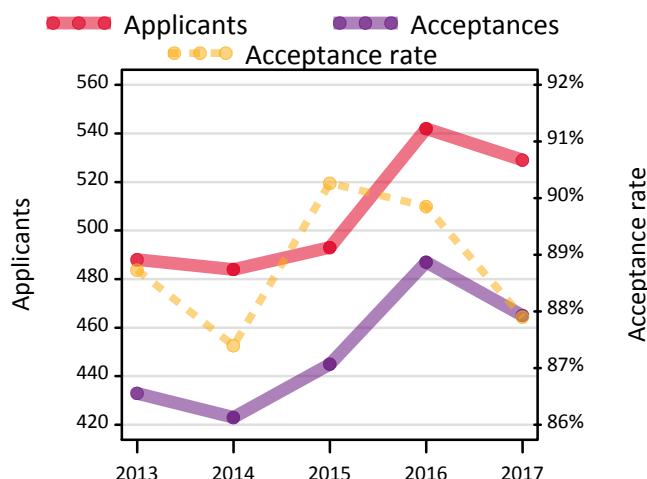
2017

Applicants  
529 (-2%)

Acceptances  
465 (-5%)

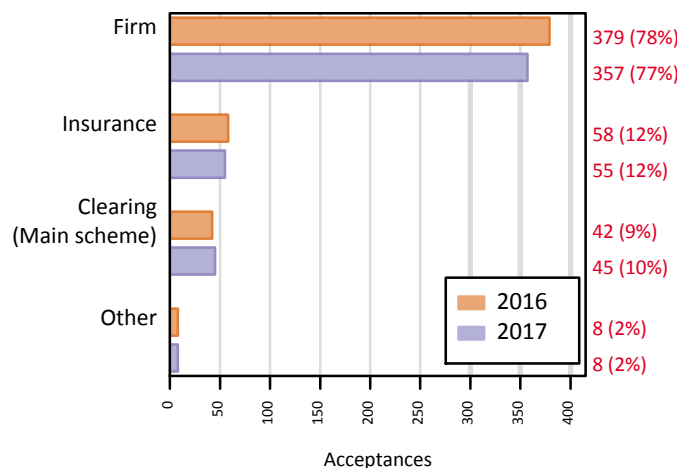
Acceptance rate  
88% (-2pp)

### Applicants and acceptances (2013 — 2017)

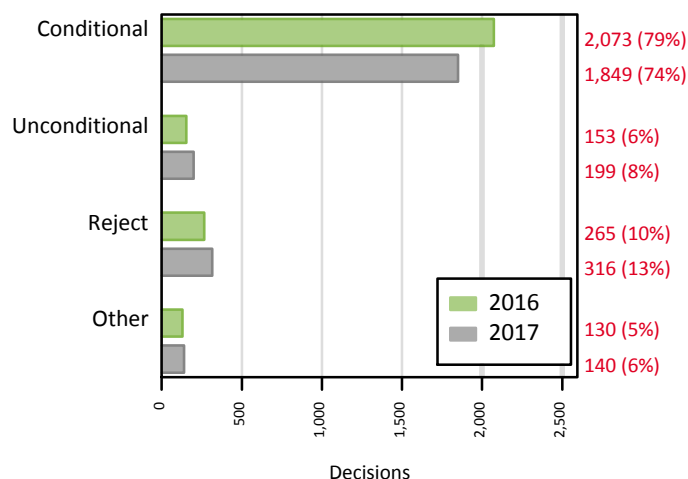


Deadline applied by	2017	2016
Applied by 15 Oct deadline	16%	20%
Applied by 15 Jan deadline	98%	99%
Applied after 15 Jan, before 30 Jun	2%	0%
Applied after 30 Jun deadline	0%	1%

### Acceptance routes



### Provider decisions



### Top 5 HEPs by acceptances (2017 ranking)

	2017	2016
University of Chester	28	21
University of Leeds	27	21
The Manchester Metropolitan University	24	21
The University of Liverpool	22	21
Sheffield Hallam University	20	21

### Top 5 subjects (JACS3) by acceptances (2017 ranking)

	2017	2016
M1 - Law by Area	24	17
C8 - Psychology	18	18
N1 - Business studies	18	16
N2 - Management studies	18	15
Q3 - English studies	16	9

## Technical notes and definitions

### Applicant

A person who has made an application in the UCAS system during the cycle reported. This includes those who submit applications for deferred entry.

### Acceptance / Placed applicant

An applicant who at the end of the cycle has been placed for entry into higher education.

### Acceptance rate

The number of acceptances divided by the number of applicants.

### Deadline

One of key application deadlines during the UCAS application cycle. May be: 15 October for medicine and dentistry courses or applications to Oxford or Cambridge; 15 January for most undergraduate courses; 24 March for some art and design courses; 30 June for any other main scheme choices. Applicants who apply after 30 June can only enter directly into Clearing.

### Main scheme

The main UCAS application scheme through which up to five providers/courses can be applied to. This opens in September and closes to new applications on 30 June the following year.

### Provider decision

Applications are referred to providers who consider the application and return a decision. The decision can be to make an offer (conditional or unconditional) or to reject the application. Applications that are yet to receive a decision are classified as 'Other'. In this report, if an application is withdrawn, it is classified as 'Reject'.

### Acceptance route

Firm Choice, Insurance choice, Main Scheme Clearing, Other Acceptance routes

### Firm Choice

The applicant was accepted to their first choice. In order to be defined as placed at their firm choice, an applicant must have been placed at the provider with which they hold their firm choice at 30 June.

### Insurance Choice

The applicant was accepted to their second choice. In order to be defined as placed at their insurance choice, an applicant must have been placed at the provider with which they hold their insurance choice at 30 June.

### Main Scheme Clearing

An applicant was unsuccessful in the main scheme (i.e. applied before 30 June) and subsequently found a place using Clearing.

### Other Acceptance routes

This includes Other Main Scheme Choice, Direct Clearing, Adjustment, and Extra. For definitions of these, please see the full report.

### JACS3 subject group

Classifies course applied to into one of 26 subject groups.

### JACS3 principal subject

Classifies course applied to into one of 215 detailed subject groups.

### Suppression

The proportional change statistics are suppressed if numbers are too small.

If there is no data from either of the years represented on this page, some outputs could be suppressed due to lack of data.

For more information about JACS3 subject coding, go to [www.hesa.ac.uk/support/documentation/jacs](http://www.hesa.ac.uk/support/documentation/jacs).

For more definitions and statistics, see the full Apply Centre Progression Report.

# Apply Centre Progression Report

UCAS

## Confidential analysis for Apply centres 00000 Example Sixth Form College

**Cycles:** 2013 — 2017

**Cycle Reference Point:** End of cycle

**Applicant coverage:** This report contains data on all applicants from the named apply centre above in the cycles covered.

### Contents:

1. Overview
2. Deadline applied by
3. Choices, decisions, offers and replies
4. Acceptance routes
5. Acceptances by provider tariff group
6. Acceptances by HE provider
7. Acceptances by JACS3 subject group
8. Acceptances by JACS3 subject

Technical notes and definitions

This report is accompanied by a Summary Page and two data files.

Please take this opportunity to check your details are correct. Note that some punctuation marks and diacritics may have been removed during the processing of this report. If you would like to amend any details, please contact the Data Collections Team.

<b>Name</b>	00000
<b>SCHOOL_NAME</b>	Example Sixth Form College
<b>LEA</b>	
<b>Address line 1</b>	
<b>Address line 2</b>	
<b>Address line 3</b>	
<b>Address line 4</b>	
<b>Post code</b>	
<b>Country</b>	England
<b>School type</b>	Sixth Form College
<b>Establishment group</b>	Further Education College

## 1. Overview

### 1.1 Applicants and acceptances



### 1.2 Overview stats

	2013	2014	2015	2016	2017
Applicants	488	484	493	542	529
Acceptances	433	423	445	487	465
Not placed	39	46	40	37	46
Withdrawn	16	15	8	18	18
Acceptance rate	88.7%	87.4%	90.3%	89.9%	87.9%

### 1.3 Applicants by application type

	2013	2014	2015	2016	2017
Main scheme applicants	487	484	493	539	528
Direct to Clearing applicants	1	0	0	3	1
RPAs	0	0	0	0	0

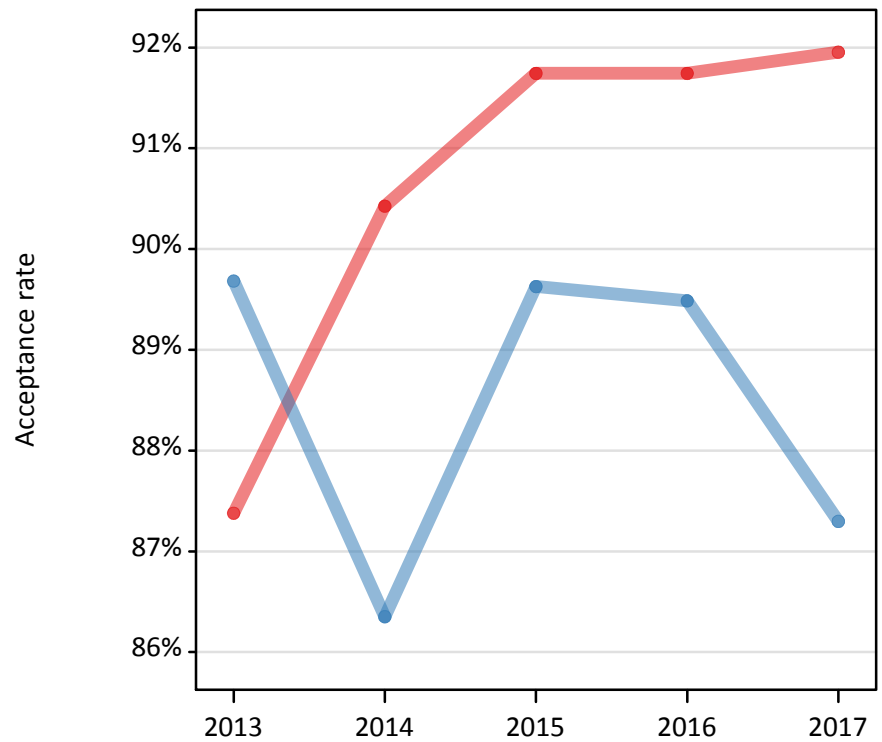
### 1.4 Acceptances by entry year

	2013	2014	2015	2016	2017
Entering same cycle	401	394	418	441	422
Deferred entry	32	29	27	46	43
Deferral rate	7.4%	6.9%	6.1%	9.4%	9.2%

## 2. Deadline applied by

### 2.1 Acceptance rate by deadline applied by

- by Oct 15 deadline
- after Oct 15, by Jan 15
- after Jan 15, by Mar 24
- after Mar 24, by Jun 30
- after Jun 30 (Direct to Clearing)



### 2.2 Applicants by deadline applied by

Deadline	2013	2014	2015	2016	2017
by Oct 15 deadline	103	94	109	109	87
after Oct 15, by Jan 15	378	381	376	428	433
after Jan 15, by Mar 24	1	2	4	1	4
after Mar 24, by Jun 30	5	7	4	1	4
after Jun 30 (Direct to Clearing)	1	0	0	3	1

### 2.3 Proportion of applicants by deadline applied by

Deadline	2013	2014	2015	2016	2017
by Oct 15 deadline	21.1%	19.4%	22.1%	20.1%	16.4%
after Oct 15, by Jan 15	77.5%	78.7%	76.3%	79.0%	81.9%
after Jan 15, by Mar 24	0.2%	0.4%	0.8%	0.2%	0.8%
after Mar 24, by Jun 30	1.0%	1.4%	0.8%	0.2%	0.8%
after Jun 30 (Direct to Clearing)	0.2%	0.0%	0.0%	0.6%	0.2%



## 2.4 Number of applicants offered by deadline applied by

Applicants who received at least one offer to a main scheme choice

Deadline	2013	2014	2015	2016	2017
by Oct 15 deadline	100	92	106	106	85
after Oct 15, by Jan 15	372	372	372	421	427
after Jan 15, by Mar 24	1	2	4	1	4
after Mar 24, by Jun 30	2	6	3	1	4

## 2.5 Offer rate by deadline applied by

Applicants who received at least one offer to a main scheme choice

Deadline	2013	2014	2015	2016	2017
by Oct 15 deadline	97.1%	97.9%	97.2%	97.2%	97.7%
after Oct 15, by Jan 15	98.4%	97.6%	98.9%	98.4%	98.6%
after Jan 15, by Mar 24	100.0%	100.0%	100.0%	100.0%	100.0%
after Mar 24, by Jun 30	40.0%	85.7%	75.0%	100.0%	100.0%

## 2.6 Number of acceptances by deadline applied by

Deadline	2013	2014	2015	2016	2017
by Oct 15 deadline	90	85	100	100	80
after Oct 15, by Jan 15	339	329	337	383	378
after Jan 15, by Mar 24	1	2	4	1	3
after Mar 24, by Jun 30	3	7	4	1	3
after Jun 30 (Direct to Clearing)	0	0	0	2	1

## 2.7 Acceptance rate by deadline applied by

Deadline	2013	2014	2015	2016	2017
by Oct 15 deadline	87.4%	90.4%	91.7%	91.7%	92.0%
after Oct 15, by Jan 15	89.7%	86.4%	89.6%	89.5%	87.3%
after Jan 15, by Mar 24	100.0%	100.0%	100.0%	100.0%	75.0%
after Mar 24, by Jun 30	60.0%	100.0%	100.0%	100.0%	75.0%
after Jun 30 (Direct to Clearing)	0.0%	0.0%	0.0%	66.7%	100.0%

### 3. Choices, decisions, offers and replies

Main scheme choices only (submitted by 30 June deadline). Decisions and replies taken as at 30 June.

#### 3.1 Applicants by number of choices

Number of choices	2013	2014	2015	2016	2017
1	9	6	1	5	13
2	4	2	3	6	6
3	7	8	12	4	11
4	34	36	39	28	44
5	433	432	438	496	454
All	487	484	493	539	528

#### 3.2 Provider decisions to choices

Provider decision	2013	2014	2015	2016	2017
Offer - Conditional	1,760	1,759	1,769	2,073	1,849
Offer - Unconditional	59	78	137	153	199
Reject	424	392	369	265	316
Other	96	109	114	130	140
All	2,339	2,338	2,389	2,621	2,504

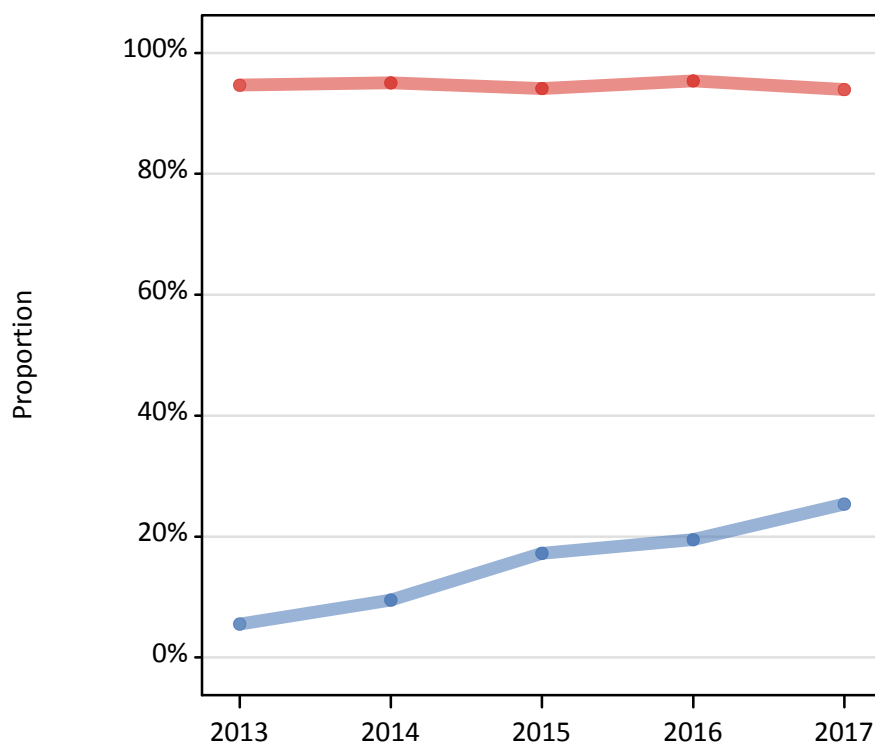
#### 3.3 Proportion of choices by decisions

Decision	2013	2014	2015	2016	2017
Offer - Conditional	75.2%	75.2%	74.0%	79.1%	73.8%
Offer - Unconditional	2.5%	3.3%	5.7%	5.8%	7.9%
Reject	18.1%	16.8%	15.4%	10.1%	12.6%
Other	4.1%	4.7%	4.8%	5.0%	5.6%

### 3.4 Proportion of main scheme applicants with a conditional or unconditional offer

At least one conditional or unconditional offer

● at least one conditional offer  
● at least one unconditional offer



### 3.5 Applicants with an offer

At least one offer

	2013	2014	2015	2016	2017
Main scheme applicants	487	484	493	539	528
Applicants with an offer	475	472	485	529	520
- Applicants with a conditional offer	461	460	464	514	496
- Applicants with an unconditional offer	27	46	85	105	134
Proportion of applicants with an offer	97.5%	97.5%	98.4%	98.1%	98.5%
- Proportion of applicants with a conditional offer	94.7%	95.0%	94.1%	95.4%	93.9%
- Proportion of applicants with an unconditional offer	5.5%	9.5%	17.2%	19.5%	25.4%

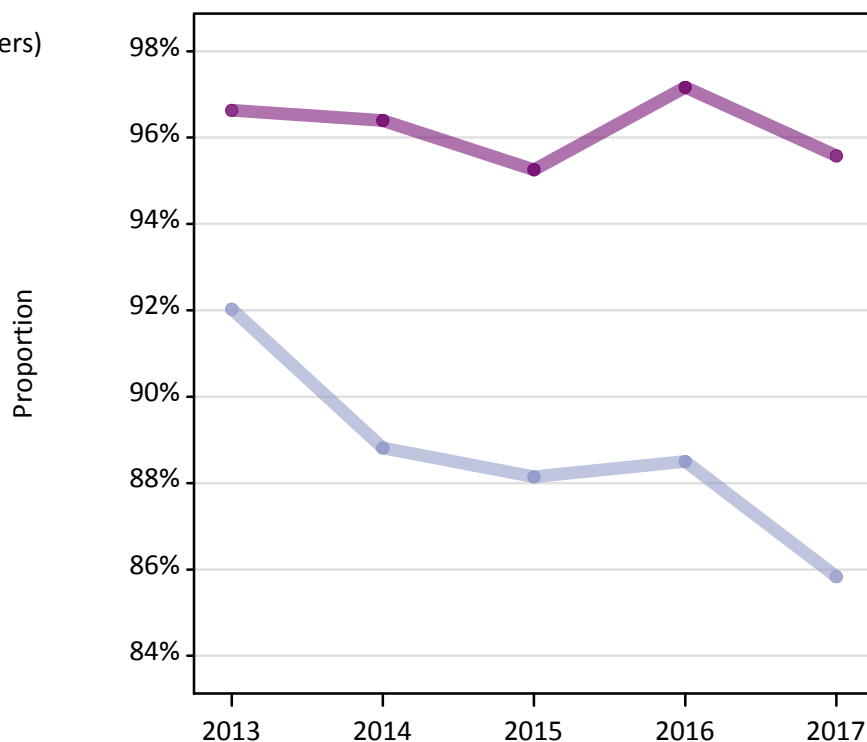
### 3.6 Applicants by number of offers received

Regardless of number of choices

Number of offers (conditional or unconditional)	2013	2014	2015	2016	2017
0	12	12	8	10	8
1	36	34	38	16	40
2	51	47	29	35	33
3	70	69	70	58	73
4	119	108	140	134	147
5	199	214	208	286	227

### 3.7 Proportion of main scheme applicants with a firm or insurance choice

- Set a firm choice (at least one offer)
- Set an insurance choice (at least two offers)



### 3.8 Applicants with a firm or insurance choice

	2013	2014	2015	2016	2017
Applicants with at least one offer	475	472	485	529	520
Applicants with a firm choice	459	455	462	514	497
Proportion of applicants with a firm choice	96.6%	96.4%	95.3%	97.2%	95.6%
Applicants with at least two offers	439	438	447	513	480
Applicants with an insurance choice	404	389	394	454	412
Proportion of applicants with an insurance choice	92.0%	88.8%	88.1%	88.5%	85.8%

### 3.9 Applicant replies to offers

Applicant Reply	2013	2014	2015	2016	2017
Firm	459	455	462	514	497
Insurance	404	389	394	454	412
Decline	956	990	1,047	1,254	1,139
Other	0	3	3	4	0
All	1,819	1,837	1,906	2,226	2,048

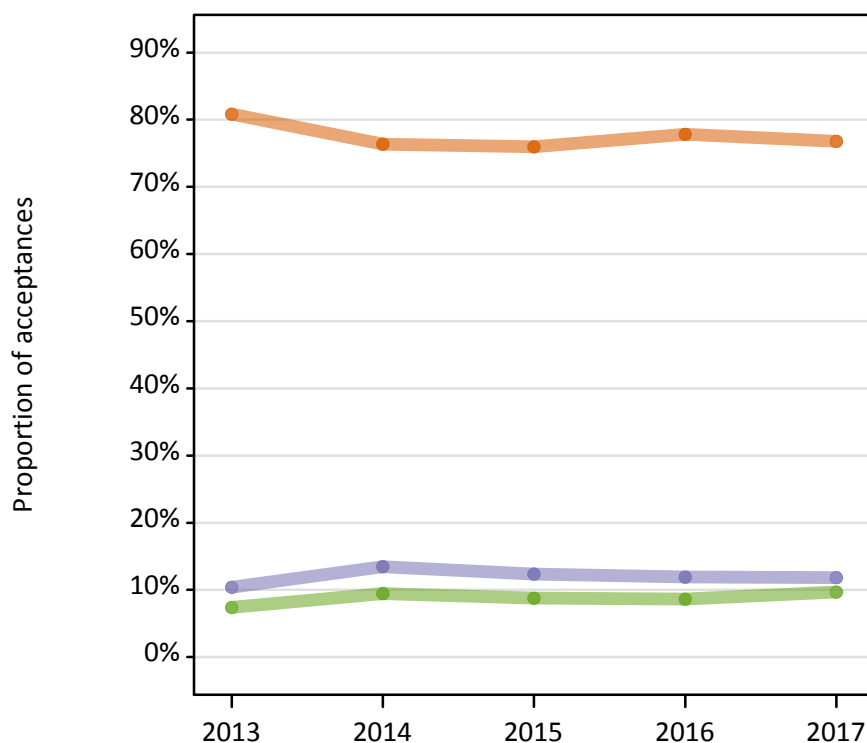
### 3.10 Proportion of offers by reply

Applicant Reply	2013	2014	2015	2016	2017
Firm	25.2%	24.8%	24.2%	23.1%	24.3%
Insurance	22.2%	21.2%	20.7%	20.4%	20.1%
Decline	52.6%	53.9%	54.9%	56.3%	55.6%
Other	0.0%	0.2%	0.2%	0.2%	0.0%

## 4. Acceptance routes

### 4.1 Proportion of acceptances by route

- Firm choice
- Insurance choice
- Main scheme Clearing
- Extra
- Adjustment
- RPA
- Direct Clearing
- Other main scheme choice



### 4.2 Acceptances by route

Route	2013	2014	2015	2016	2017
Firm choice	350	323	338	379	357
Insurance choice	45	57	55	58	55
Main scheme Clearing	32	40	39	42	45
Extra	2	2	10	2	4
Adjustment	4	1	2	2	3
RPA	0	0	0	0	0
Direct Clearing	0	0	0	2	1
Other main scheme choice	0	0	1	2	0
All	433	423	445	487	465

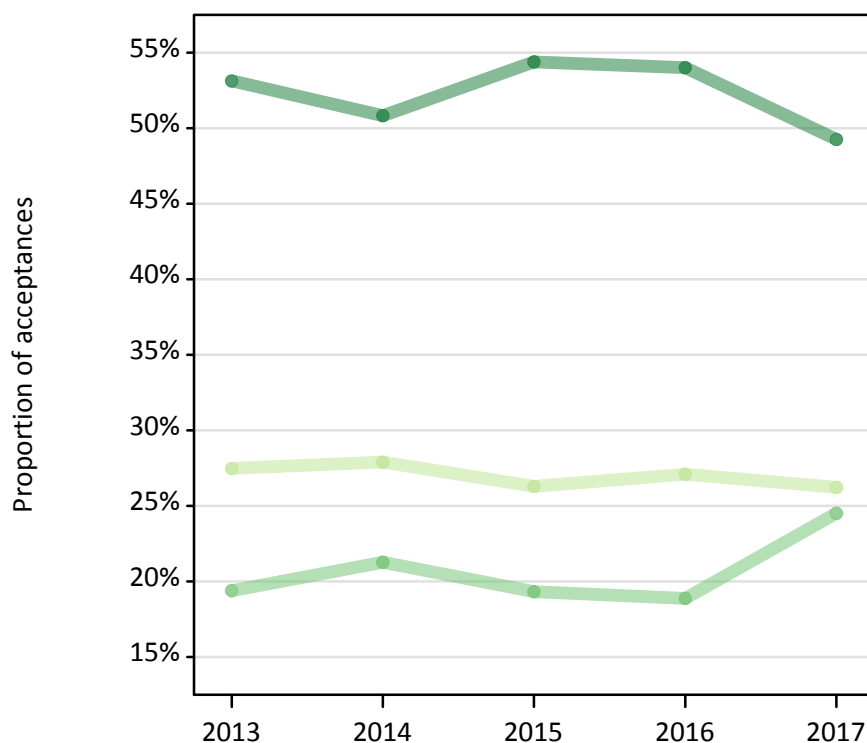
### 4.3 Proportion of acceptances by route

Route	2013	2014	2015	2016	2017
Firm choice	80.8%	76.4%	76.0%	77.8%	76.8%
Insurance choice	10.4%	13.5%	12.4%	11.9%	11.8%
Main scheme Clearing	7.4%	9.5%	8.8%	8.6%	9.7%
Extra	0.5%	0.5%	2.2%	0.4%	0.9%
Adjustment	0.9%	0.2%	0.4%	0.4%	0.6%
RPA	0.0%	0.0%	0.0%	0.0%	0.0%
Direct Clearing	0.0%	0.0%	0.0%	0.4%	0.2%
Other main scheme choice	0.0%	0.0%	0.2%	0.4%	0.0%

## 5. Acceptances by provider tariff group

### 5.1 Proportion of acceptances by provider group

- Higher tariff
- Medium tariff
- Lower tariff



### 5.2 Acceptances by provider group

Provider tariff group	2013	2014	2015	2016	2017
Lower tariff	119	118	117	132	122
Medium tariff	84	90	86	92	114
Higher tariff	230	215	242	263	229
All	433	423	445	487	465

### 5.3 Proportion of acceptances by provider group

Provider tariff group	2013	2014	2015	2016	2017
Lower tariff	27.5%	27.9%	26.3%	27.1%	26.2%
Medium tariff	19.4%	21.3%	19.3%	18.9%	24.5%
Higher tariff	53.1%	50.8%	54.4%	54.0%	49.2%

## 6. Acceptances by HE provider

### 6.1 Acceptances by HE provider

Top 20, 2017 rank

HEP and rank		2013	2014	2015	2016	2017
1	University of Chester	12	21	18	21	28
2	University of Leeds	22	29	28	21	27
3	The Manchester Metropolitan University	14	18	24	21	24
4	The University of Liverpool	13	9	28	21	22
5	Sheffield Hallam University	5	12	8	21	20
6	University of York	11	6	11	12	18
	University of Birmingham	10	18	10	8	18
8	The University of Sheffield	18	11	19	20	17
	Lancaster University	23	7	10	13	17
10	Newcastle University	13	19	23	28	16
11	University of Bath	10	7	10	8	15
12	Liverpool John Moores University (LJMU)	27	19	16	11	14
	Nottingham Trent University	5	7	9	7	14
14	Leeds Beckett University	12	9	13	12	12
15	Edge Hill University	11	9	4	13	11
	Keele University	4	5	6	6	11
17	Durham University	10	14	15	12	10
	Loughborough University	12	6	6	10	10
19	The University of Manchester	24	17	18	10	9
	Cardiff University	9	8	5	9	9

### 6.2 Total different HE providers applicants accepted to

	2013	2014	2015	2016	2017
Number of HE providers	85	85	77	84	76

## 7. Acceptances by JACS3 subject group

### 7.1 Acceptances by JACS3 subject group

JACS3 subject group	2013	2014	2015	2016	2017
Group A Medicine and Dentistry	24	19	19	13	11
Group B Subjects Allied to Medicine	23	27	17	24	31
Group C Biological Sciences	46	42	45	52	53
Group D Veterinary Sciences, Agriculture and related subjects	8	9	12	6	9
Group F Physical Sciences	25	31	36	29	27
Group G Mathematical Sciences	12	13	12	13	9
Group H Engineering	23	23	23	35	19
Group I Computer Sciences	10	9	17	13	18
Group J Technologies	1	1	4	1	3
Group K Architecture, Building and Planning	6	11	11	8	15
Group L Social studies	32	36	37	36	26
Group M Law	18	10	16	19	26
Group N Business and Administrative studies	60	53	45	68	70
Group P Mass Communication and Documentation	5	3	10	9	13
Group Q Linguistics, Classics and related subjects	14	12	18	18	16
Group R European Languages, Literature and related subjects	10	5	3	7	7
Group T Eastern, Asiatic, African, American and Australasian Languages, Literature and related subjects	3	2	1	1	0
Group V Historical and Philosophical studies	24	16	35	32	20
Group W Creative Arts and Design	26	32	23	40	34
Group X Education	16	17	8	7	11
Y Combined arts	10	11	8	5	4
Y Combined sciences	4	6	6	6	7
Y Combined social sciences	3	6	10	7	6
Y Sciences combined with social sciences or arts	13	9	11	11	12
Y Social sciences combined with arts	12	10	8	16	9
Z General, other combined & unknown	5	10	10	11	9
All	433	423	445	487	465



## 8. Acceptances by JACS3 subject

### 8.1 Acceptances by JACS3 subject

Top 20, 2017 rank

Subject and rank		2013	2014	2015	2016	2017
1	M1 - Law by Area	17	8	13	17	24
2	C8 - Psychology	17	18	16	18	18
	N1 - Business studies	21	13	11	16	18
	N2 - Management studies	16	17	21	15	18
5	Q3 - English studies	9	8	12	9	16
6	W2 - Design studies	9	11	9	14	15
7	V1 - History by Period	14	11	27	21	14
8	C1 - Biology	12	5	9	16	13
	I1 - Computer Science	8	5	13	10	13
10	N5 - Marketing	3	5	4	11	12
11	F1 - Chemistry	8	10	10	13	11
12	C6 - Sport and Exercise Science	5	8	5	5	10
	P3 - Media studies	2	2	3	4	10
14	NN - Combinations within Business & Admin. Studies	13	6	3	14	9
	G1 - Mathematics	12	13	12	13	9
	Z Combs of 3 subjects, or other general courses	5	10	10	11	9
	A1 - Pre-clinical Medicine	20	19	15	10	9
	K1 - Architecture	4	8	10	4	9
19	B9 - Others in Subjects allied to Medicine	6	10	3	5	8
20	B7 - Nursing	5	4	4	9	7
	C7 - Molecular Biology, Biophysics & Biochemistry	9	7	7	6	7
	B1 - Anatomy, Physiology and Pathology	6	6	1	4	7
	X1 - Training Teachers	6	9	2	3	7

### 8.2 Total different JACS3 subjects applicants accepted to

	2013	2014	2015	2016	2017
Number of JACS3 subjects	96	97	92	93	102

## Technical notes and definitions

### Applicant

A person who has made an application in the UCAS system during the cycle reported. This includes those who submit applications for deferred entry.

### Acceptance / Placed applicant

An applicant who at the end of the cycle has been placed for entry into higher education.

### Acceptance rate

The number of acceptances divided by the number of applicants.

### Withdrawn

An applicant who no longer wishes to be considered for a place and completely withdraws their application.

### Deferred

An application for deferred entry. Most applications are into the academic year that starts immediately at the end of the application cycle.

### Deadline

One of key application deadlines during the UCAS application cycle. May be: 15 October for medicine and dentistry courses or applications to Oxford or Cambridge; 15 January for most undergraduate courses; 24 March for some art and design courses; 30 June for any other main scheme choices. Applicants who apply after 30 June can only enter directly into Clearing.

### Main scheme

The main UCAS application scheme through which up to five providers/courses can be applied to. This opens in September and closes to new applications on 30 June the following year.

### Direct to Clearing

Applicants who register to apply after 30 June. Applicants cannot make parallel applications through this route – only one application will be active at a given point in time.

### RPA

An RPA is a Record of Prior Acceptance, where an application is submitted to UCAS by a provider, when an unconditional firm has been offered and accepted by the applicant.

### Choice

An applicant's application to a course at a provider.

### Provider decision

Applications are referred to providers who consider the application and return a decision. The decision can be to make an offer (conditional or unconditional) or to reject the application. Applications that are yet to receive a decision are classified as 'Other'. In this report, if an application is withdrawn, it is classified as 'Reject'.

### Reply

When an applicant receives an offer to their application, they may respond by setting the offer as the 'Firm' choice, 'Insurance', or to 'decline' the offer. If an applicant received at least one offer, they may choose at most one to be their Firm, at most one to be their Insurance choice if they have at least two offers, and other offers must be declined.

### Provider tariff group

The grouping of providers based on the average levels of attainment of their accepted applicants (summarised through UCAS Tariff points) in a period of application cycles spanning from 2004 to 2011. Each group of providers accounted for around a third of all UK 18 year old acceptances in these cycles. Each group of providers accounted for around a third of all UK 18 year old acceptances in these cycles, with the following categories: 'Higher tariff', 'Medium tariff' and 'Lower tariff'.

### Acceptance route

Firm Choice, Insurance choice, Main Scheme Clearing, Direct Clearing, Adjustment, Extra, RPA, Other Main Scheme Choice

### Firm Choice

The applicant was accepted to their first choice. In order to be defined as placed at their firm choice, an applicant must have been placed at the provider with which they hold their firm choice at 30 June.

### Insurance Choice

The applicant was accepted to their second choice. In order to be defined as placed at their insurance choice, an applicant must have been placed at the provider with which they hold their insurance choice at 30 June.

### Other Main Scheme Choice

An applicant who applied by 30 June and was accepted to a main scheme choice but had not responded, or was awaiting an offer, at 30 June.

### Main Scheme Clearing

An applicant was unsuccessful in the main scheme (i.e. applied before 30 June) and subsequently found a place using Clearing.

### Direct Clearing

An applicant who applied via Clearing without an initial application through the main scheme.

### Adjustment

A route where applicants who have met and exceeded the conditions of their firm choice choose to take up an alternative offer

### Extra

A route where applicants who held no offers after using all of their main scheme choices, make additional choices.

### JACS3 subject group

Classifies course applied to into one of 26 subject groups.

### JACS3 principal subject

Classifies course applied to into one of 215 detailed subject groups.

For more information about JACS3 subject coding, go to [www.hesa.ac.uk/support/documentation/jacs](http://www.hesa.ac.uk/support/documentation/jacs).

## **Apply Centre Progression Data File Variables**

The Apply Centre Progression Report comes with two CSV Data Files: Applicants Data and Choices Data. Each only covers data for one apply centre. Both files contain data for applicants who applied through this apply centre for the given year.

In both files, applicants are only included if they gave consent to share their data with their apply centre.

This document explains the variables (columns) in each of the Data Files.

## Applicants Data

This file contains some personal information about the applicants, their status at the end of the cycle and some details on where they were placed if they were placed.

The last six variables are blank for applicants who were not placed.

Variable	Description
Apply centre code	Code of the school or centre the application was submitted by
Year	Application cycle (applying in 2016 – 2017 cycle shown as 2017)
Applicant ID	Applicant's personal ID number
Application number	Applicant's application number – a combination of scheme, cycle, applicant ID, and the application ID
Forenames	As given in Apply
Surname	As given in Apply
Date of birth	As given in Apply
Age (at end of school year)	Applicant's age at the end of the school year they are applying in relative to domicile applying from, 17 and unders grouped together, 65 and overs grouped together
Sex	As given in Apply
Region	Region of England, the UK, or the world that the applicant is domiciled in. Derivable from area of permanent residence
Area of permanent residence	Applicant's area of permanent residence summarised as area of the UK or country/region of the world
Deadline applied by	The deadline the applicant's choices were submitted by
Main scheme applicant	Binary flag for whether the applicant applied by the 30 June deadline
Direct to Clearing applicant	Binary flag for whether the applicant applied after the 30 June deadline and were entered directly in Clearing
RPA	Binary flag for whether the applicant had a record of prior of acceptance
Withdrawn	Binary flag for whether the applicant completely withdrew their application
Placed	Binary flag for whether the applicant was placed at the end of the cycle
Entry route	Route applicant was placed by
Provider code (placed)	Unique code identifying the provider placed at
Provider name (placed)	Name of the provider placed at
Campus code (placed)	Campus code of course at HEP the applicant is placed at
Course code (placed)	Course code applicant placed at
Course name (placed)	Title of course applicant placed at
Deferred entry (placed)	Binary flag for whether the applicants chose to defer entry to this course they were placed at

## Choices Data

This file contains some data about the choices the applicants made and the decisions made.

Variable	Description
Apply centre code	Code of the school or centre the application was submitted by
Year	Application cycle (applying in 2016 – 2017 cycle shown as 2017)
Applicant ID	Applicant's personal ID number
Application number	Applicant's application number – a combination of scheme, cycle, applicant ID, and the application ID
Forenames	As given in Apply
Surname	As given in Apply
Deadline applied by	The deadline the applicant's choices were submitted by
Main scheme applicant	Binary flag for whether the applicant applied by the 30 June deadline
Direct to Clearing applicant	Binary flag for whether the applicant applied after the 30 June deadline and were entered directly in Clearing
RPA	Binary flag for whether the applicant had a record of prior of acceptance
Withdrawn	Binary flag for whether the applicant completely withdrew their application
Route	Route the choice came through – Main scheme, Extra, Clearing, Adjustment, or RPA
Provider code	Unique code identifying the provider applied to
Provider name	Name of the provider applied to
Campus code	Campus code of course at HEP the applicant applied to
Course code	Course code applicant applied to
Course name	Title of course applicant applied to
JACS3 subject group	Classifies course applied to into one of 26 subject groups
JACS3 principal subject	Classifies course applied to into one of 215 detailed subject groups
Deferred entry	Binary flag for whether the applicants chose to defer entry to this choice.
Provider decision	The decision of the HEP on the choice as at the 30 June application deadline. May be conditional [offer], unconditional [offer], reject, other (representing no decision having been made yet), or direct if the choice was not a main scheme choice
Applicant reply	The applicant's reply to the HEP's offer as at the 30 June application deadline. May be firm, insurance, decline, or blank (representing no reply having been made yet, or no offer in the first place)
Accepted to this choice	Binary flag for whether the applicant was accepted to this choice

## Competitor Report



The data in the Competitors Report covers the previous application cycle

The Competitor Report shows how well your progression statistics stack up compared to competitors, and provides a dashboard of key statistics. It enables you to compare your destination data with your choice of between five and 25 other centres. Data includes subjects applied for, acceptances, and a breakdown of applicant characteristics – e.g. age, gender, ethnicity, and Tariff band.

Schools can order two Competitor Reports if they want to see a variation in where they sit between two groups – e.g. local rankings against national rankings. If more than one report is ordered, the competitor groups must differ by at least five schools to ensure anonymity of data. The data contained in these reports is aggregated.

If you subscribe to the Competitor Report, you will need to complete the competitor data form. UCAS will send reminders to do this each year before we can run the reports.

# Apply Centre Comparison Summary Page

UCAS

## Confidential analysis for Apply centres 00000 Example Sixth Form College

Changes in brackets refer to comparison relative to you. PP refers to a percentage point change. Comp refers to the Comparison group. Rounding and non-disclosure controls apply as in report.

Cycle:

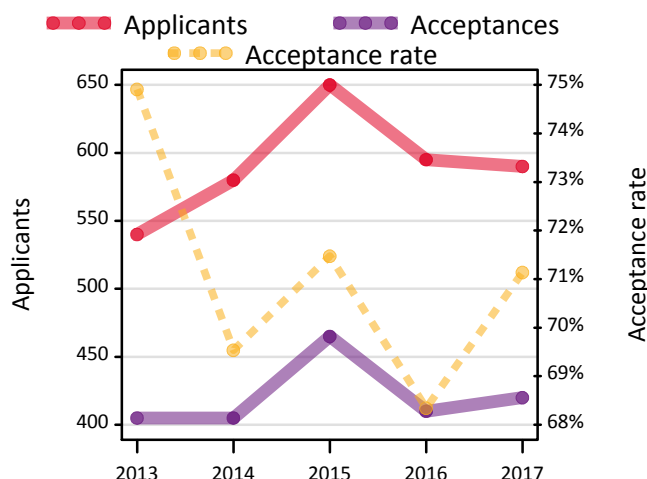
2017

Applicants  
590

Acceptances  
420

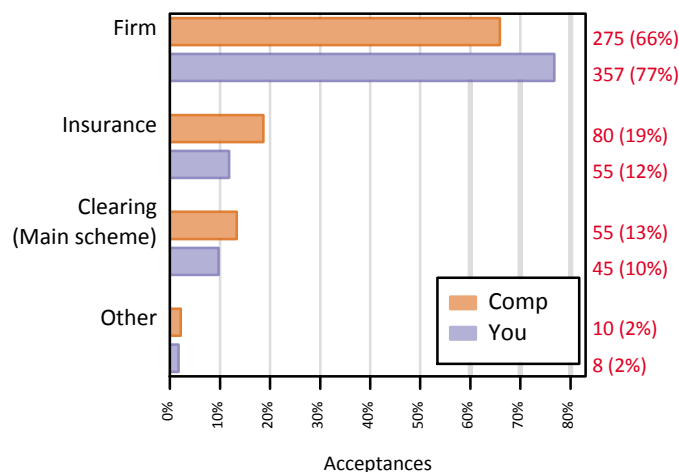
Acceptance rate  
71% (-17pp)

### Applicants and acceptances (Comp) (2013 — 2017)

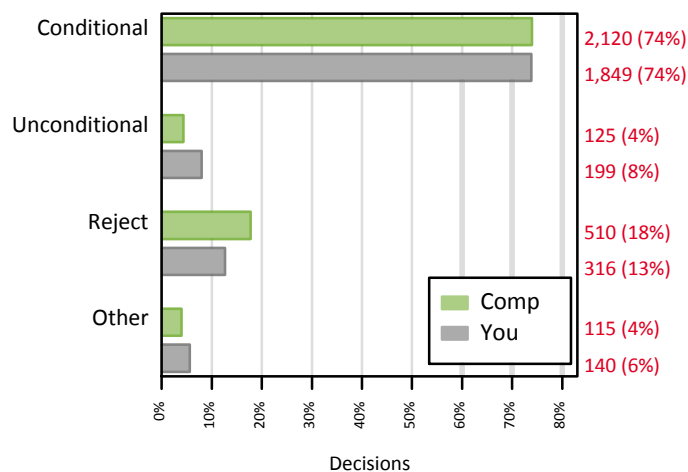


Deadline applied by	You	Comp
Applied by 15 Oct deadline	16%	13%
Applied by 15 Jan deadline	98%	93%
Applied after 15 Jan, before 30 Jun	2%	7%
Applied after 30 Jun deadline	0%	0%

### Acceptance routes



### Provider decisions



### Top 5 HEPs by acceptances (Your ranking)

	You	Comp
University of Chester	28	0
University of Leeds	27	15
The Manchester Metropolitan University	24	10
The University of Liverpool	22	5
Sheffield Hallam University	20	10

### Top 5 subjects (JACS3) by acceptances (Your ranking)

	You	Comp
M1 - Law by Area	24	20
C8 - Psychology	18	10
N1 - Business studies	18	15
N2 - Management studies	18	15
Q3 - English studies	16	5



## Technical notes and definitions

### Applicant

A person who has made an application in the UCAS system during the cycle reported. This includes those who submit applications for deferred entry.

### Acceptance / Placed applicant

An applicant who at the end of the cycle has been placed for entry into higher education.

### Acceptance rate

The number of acceptances divided by the number of applicants.

### Deadline

One of key application deadlines during the UCAS application cycle. May be: 15 October for medicine and dentistry courses or applications to Oxford or Cambridge; 15 January for most undergraduate courses; 24 March for some art and design courses; 30 June for any other main scheme choices. Applicants who apply after 30 June can only enter directly into Clearing.

### Main scheme

The main UCAS application scheme through which up to five providers/courses can be applied to. This opens in September and closes to new applications on 30 June the following year.

### Provider decision

Applications are referred to providers who consider the application and return a decision. The decision can be to make an offer (conditional or unconditional) or to reject the application. Applications that are yet to receive a decision are classified as 'Other'. In this report, if an application is withdrawn, it is classified as 'Reject'.

### Acceptance route

Firm Choice, Insurance choice, Main Scheme Clearing, Other Acceptance routes

### Firm Choice

The applicant was accepted to their first choice. In order to be defined as placed at their firm choice, an applicant must have been placed at the provider with which they hold their firm choice at 30 June.

### Insurance Choice

The applicant was accepted to their second choice. In order to be defined as placed at their insurance choice, an applicant must have been placed at the provider with which they hold their insurance choice at 30 June.

### Main Scheme Clearing

An applicant was unsuccessful in the main scheme (i.e. applied before 30 June) and subsequently found a place using Clearing.

### Other Acceptance routes

This includes Other Main Scheme Choice, Direct Clearing, Adjustment, and Extra. For definitions of these, please see the full report.

### JACS3 subject group

Classifies course applied to into one of 26 subject groups.

### JACS3 principal subject

Classifies course applied to into one of 215 detailed subject groups.

### Suppression

The proportional change statistics are suppressed if numbers are too small.

If there is no data from either of the years represented on this page, some outputs could be suppressed due to lack of data.

For more information about JACS3 subject coding, go to [www.hesa.ac.uk/support/documentation/jacs](http://www.hesa.ac.uk/support/documentation/jacs).

For more definitions and statistics, see your full Apply Centre Progression and Comparison Reports.

# Apply Centre Comparison Report

UCAS

## Confidential analysis for Apply centres 00000 Example Sixth Form College

**Cycles:** 2013 — 2017

**Cycle Reference Point:** End of cycle

**Applicant coverage:** This report contains data on all applicants from the following named apply centres.

00001 Example Centre 1  
00002 Example Centre 2  
00003 Example Centre 3  
00004 Example Centre 4  
00005 Example Centre 5  
00006 Example Centre 6  
00007 Example Centre 7  
00008 Example Centre 8  
00009 Example Centre 9  
00010 Example Centre 10

### Contents:

1. Overview
  2. Deadline applied by
  3. Choices, decisions, offers and replies
  4. Acceptance routes
  5. Acceptances by provider tariff group
  6. Acceptances by HE provider
  7. Acceptances by JACS3 subject group
  8. Acceptances by JACS3 subject
- Technical notes and definitions

The Comparison Report contains aggregated data for the apply centres above. To see your own data please use your copy of the Progression Report.

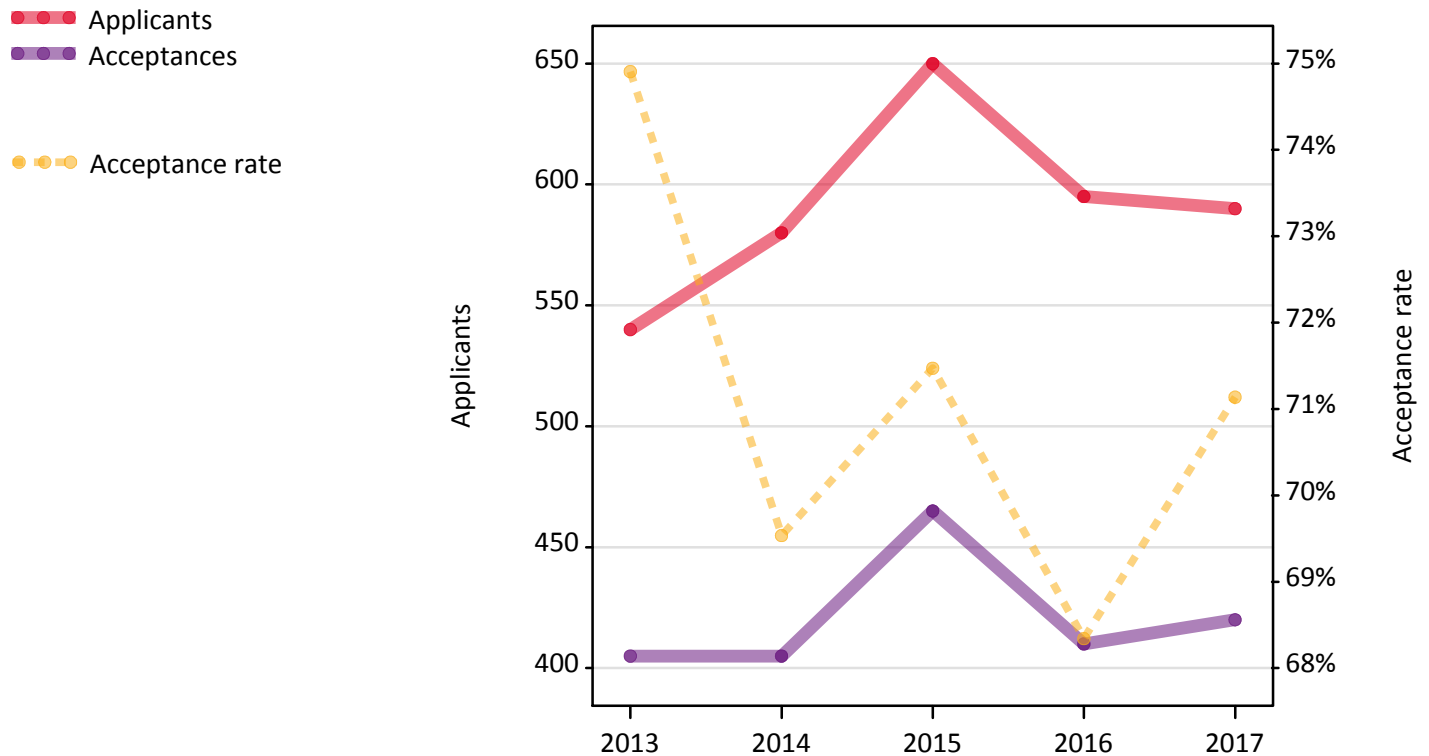
Note: All numbers are rounded to the nearest 5.

Note: To avoid the disclosure of information about any individual the following measures are taken:

- Percentages are reported as 0% if the numerator is less than 5.
- Percentages are reported as 100% if the numerator is within 5 of the denominator.

## 1. Overview

### 1.1 Applicants and acceptances



### 1.2 Overview stats

	2013	2014	2015	2016	2017
Applicants	540	580	650	595	590
Acceptances	405	405	465	410	420
Not placed	115	160	170	160	155
Withdrawn	20	20	15	30	15
Acceptance rate	74.9%	69.5%	71.5%	68.3%	71.1%

### 1.3 Applicants by application type

	2013	2014	2015	2016	2017
Main scheme applicants	535	580	650	595	590
Direct to Clearing applicants	5	5	0	0	0
RPAs	0	0	0	0	0

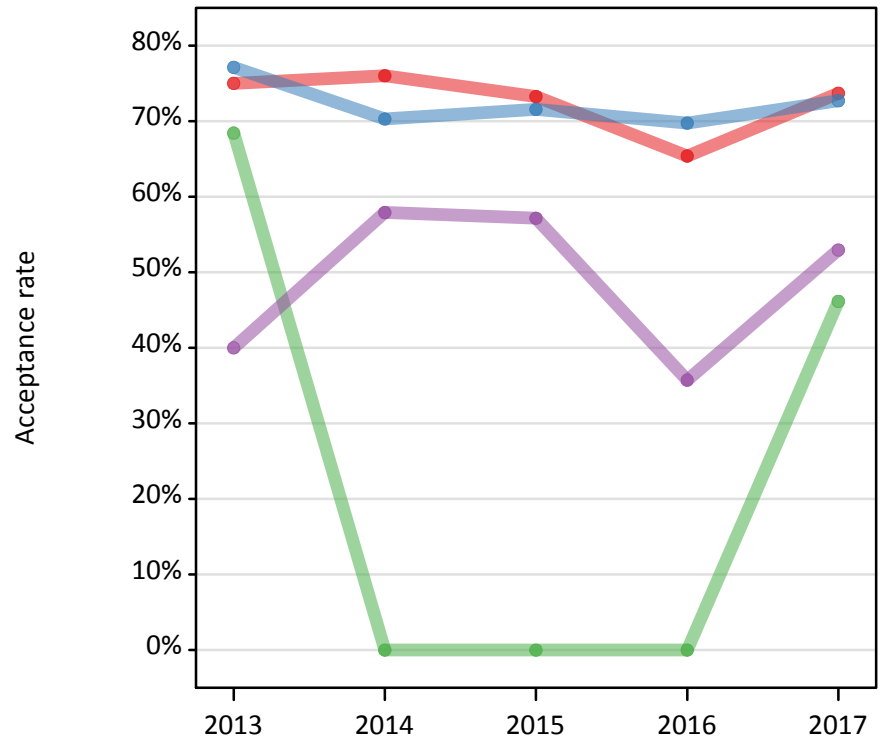
### 1.4 Acceptances by entry year

	2013	2014	2015	2016	2017
Entering same cycle	385	390	455	395	400
Deferred entry	20	15	15	15	15
Deferral rate	5.0%	3.5%	2.8%	3.7%	4.1%

## 2. Deadline applied by

### 2.1 Acceptance rate by deadline applied by

- by Oct 15 deadline
- after Oct 15, by Jan 15
- after Jan 15, by Mar 24
- after Mar 24, by Jun 30
- after Jun 30 (Direct to Clearing)



### 2.2 Applicants by deadline applied by

Deadline	2013	2014	2015	2016	2017
by Oct 15 deadline	90	75	85	80	75
after Oct 15, by Jan 15	400	470	545	500	470
after Jan 15, by Mar 24	20	15	5	5	25
after Mar 24, by Jun 30	20	20	15	15	15
after Jun 30 (Direct to Clearing)	5	5	0	0	0

### 2.3 Proportion of applicants by deadline applied by

Deadline	2013	2014	2015	2016	2017
by Oct 15 deadline	17.1%	12.9%	13.2%	13.1%	12.9%
after Oct 15, by Jan 15	74.7%	81.1%	83.6%	83.6%	79.6%
after Jan 15, by Mar 24	3.5%	2.2%	0.9%	0.0%	4.4%
after Mar 24, by Jun 30	3.7%	3.3%	2.1%	2.3%	2.9%
after Jun 30 (Direct to Clearing)	0.9%	0.0%	0.0%	0.0%	0.0%

## 2.4 Number of applicants offered by deadline applied by

Applicants who received at least one offer to a main scheme choice

Deadline	2013	2014	2015	2016	2017
by Oct 15 deadline	80	65	75	70	70
after Oct 15, by Jan 15	400	455	530	490	460
after Jan 15, by Mar 24	20	15	5	5	25
after Mar 24, by Jun 30	10	15	15	10	15

## 2.5 Offer rate by deadline applied by

Applicants who received at least one offer to a main scheme choice

Deadline	2013	2014	2015	2016	2017
by Oct 15 deadline	89.1%	85.3%	88.4%	92.3%	93.4%
after Oct 15, by Jan 15	100.0%	97.0%	97.4%	98.2%	98.5%
after Jan 15, by Mar 24	100.0%	100.0%	100.0%	0.0%	100.0%
after Mar 24, by Jun 30	55.0%	100.0%	100.0%	100.0%	100.0%

## 2.6 Number of acceptances by deadline applied by

Deadline	2013	2014	2015	2016	2017
by Oct 15 deadline	70	55	65	50	55
after Oct 15, by Jan 15	310	330	390	350	340
after Jan 15, by Mar 24	15	5	5	5	10
after Mar 24, by Jun 30	10	10	10	5	10
after Jun 30 (Direct to Clearing)	5	0	0	0	0

## 2.7 Acceptance rate by deadline applied by

Deadline	2013	2014	2015	2016	2017
by Oct 15 deadline	75.0%	76.0%	73.3%	65.4%	73.7%
after Oct 15, by Jan 15	77.1%	70.3%	71.6%	69.7%	72.7%
after Jan 15, by Mar 24	68.4%	0.0%	0.0%	0.0%	46.2%
after Mar 24, by Jun 30	40.0%	57.9%	57.1%	35.7%	52.9%
after Jun 30 (Direct to Clearing)	0.0%	0.0%	0.0%	0.0%	0.0%

### 3. Choices, decisions, offers and replies

Main scheme choices only (submitted by 30 June deadline). Decisions and replies taken as at 30 June.

#### 3.1 Applicants by number of choices

Number of choices	2013	2014	2015	2016	2017
1	10	5	5	15	5
2	5	0	5	5	5
3	5	10	5	5	10
4	20	25	25	25	25
5	495	535	610	545	545
All	535	580	650	595	590

#### 3.2 Provider decisions to choices

Provider decision	2013	2014	2015	2016	2017
Offer - Conditional	1,860	1,945	2,300	2,105	2,120
Offer - Unconditional	55	100	100	95	125
Reject	555	660	700	580	510
Other	120	105	80	85	115
All	2,590	2,815	3,180	2,865	2,870

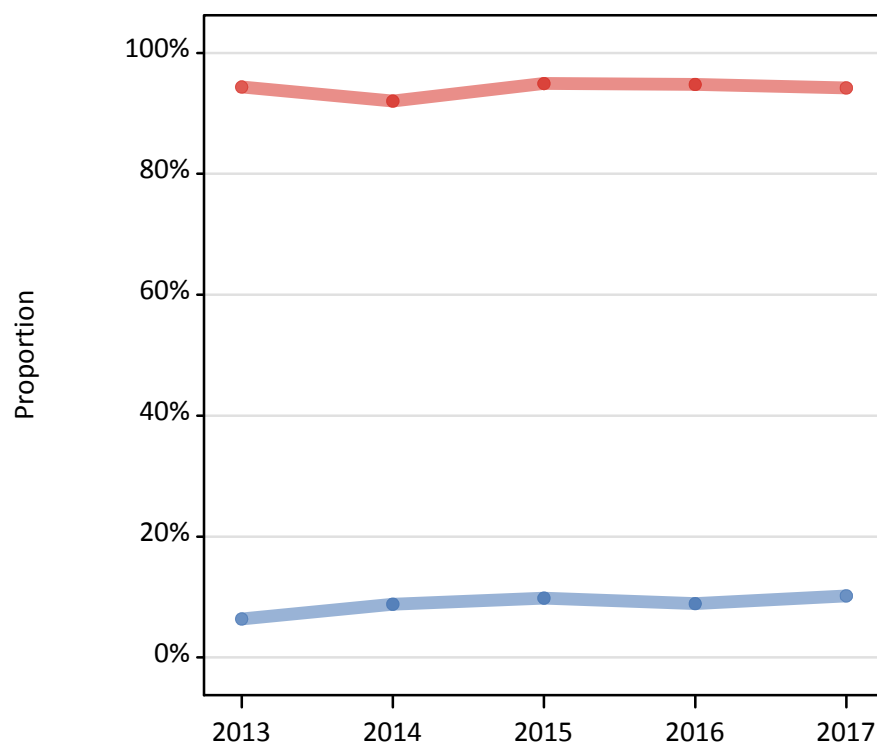
#### 3.3 Proportion of choices by decisions

Decision	2013	2014	2015	2016	2017
Offer - Conditional	71.9%	69.2%	72.3%	73.5%	74.0%
Offer - Unconditional	2.0%	3.6%	3.2%	3.2%	4.3%
Reject	21.4%	23.5%	22.0%	20.2%	17.7%
Other	4.6%	3.8%	2.5%	3.0%	4.0%

### 3.4 Proportion of main scheme applicants with a conditional or unconditional offer

At least one conditional or unconditional offer

● at least one conditional offer  
● at least one unconditional offer



### 3.5 Applicants with an offer

At least one offer

	2013	2014	2015	2016	2017
Main scheme applicants	535	580	650	595	590
Applicants with an offer	510	550	625	575	570
- Applicants with a conditional offer	505	530	620	565	555
- Applicants with an unconditional offer	35	50	65	55	60
Proportion of applicants with an offer	95.9%	95.0%	96.3%	96.6%	97.3%
- Proportion of applicants with a conditional offer	94.4%	92.0%	94.9%	94.8%	94.2%
- Proportion of applicants with an unconditional offer	6.4%	8.8%	9.8%	8.9%	10.2%

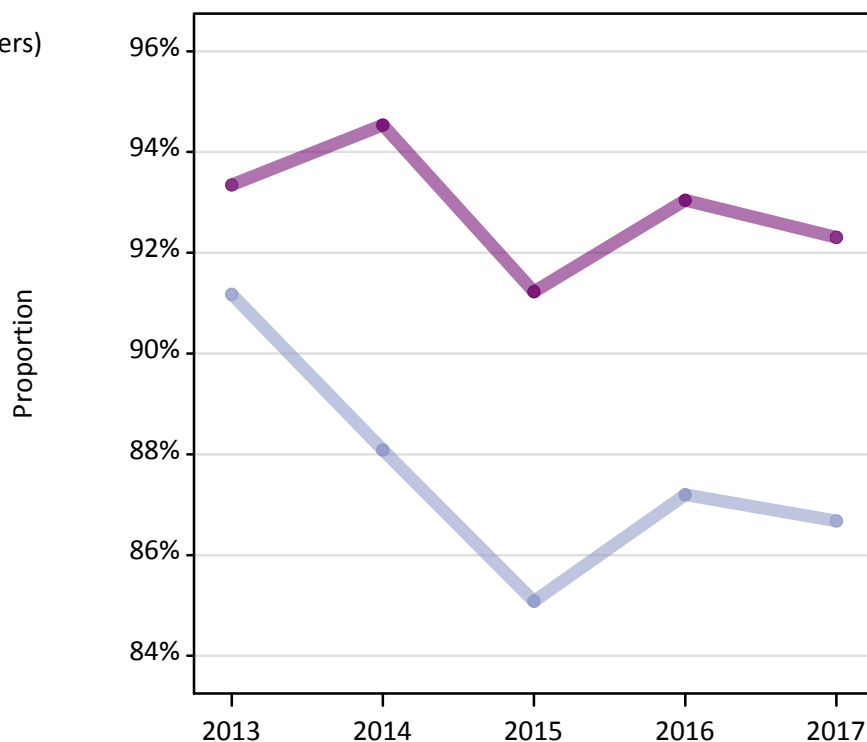
### 3.6 Applicants by number of offers received

Regardless of number of choices

Number of offers (conditional or unconditional)	2013	2014	2015	2016	2017
0	20	30	25	20	15
1	35	35	35	35	40
2	65	50	60	50	40
3	75	115	110	110	90
4	155	170	180	160	160
5	180	175	235	220	245

### 3.7 Proportion of main scheme applicants with a firm or insurance choice

- Set a firm choice (at least one offer)
- Set an insurance choice (at least two offers)



### 3.8 Applicants with a firm or insurance choice

	2013	2014	2015	2016	2017
Applicants with at least one offer	510	550	625	575	570
Applicants with a firm choice	475	520	570	535	530
Proportion of applicants with a firm choice	93.3%	94.5%	91.2%	93.0%	92.3%
Applicants with at least two offers	475	510	590	540	535
Applicants with an insurance choice	435	450	500	470	460
Proportion of applicants with an insurance choice	91.2%	88.1%	85.1%	87.2%	86.7%

### 3.9 Applicant replies to offers

Applicant Reply	2013	2014	2015	2016	2017
Firm	475	520	570	535	530
Insurance	435	450	500	470	460
Decline	985	1,065	1,305	1,170	1,225
Other	15	10	20	25	30
All	1,915	2,045	2,400	2,200	2,245

### 3.10 Proportion of offers by reply

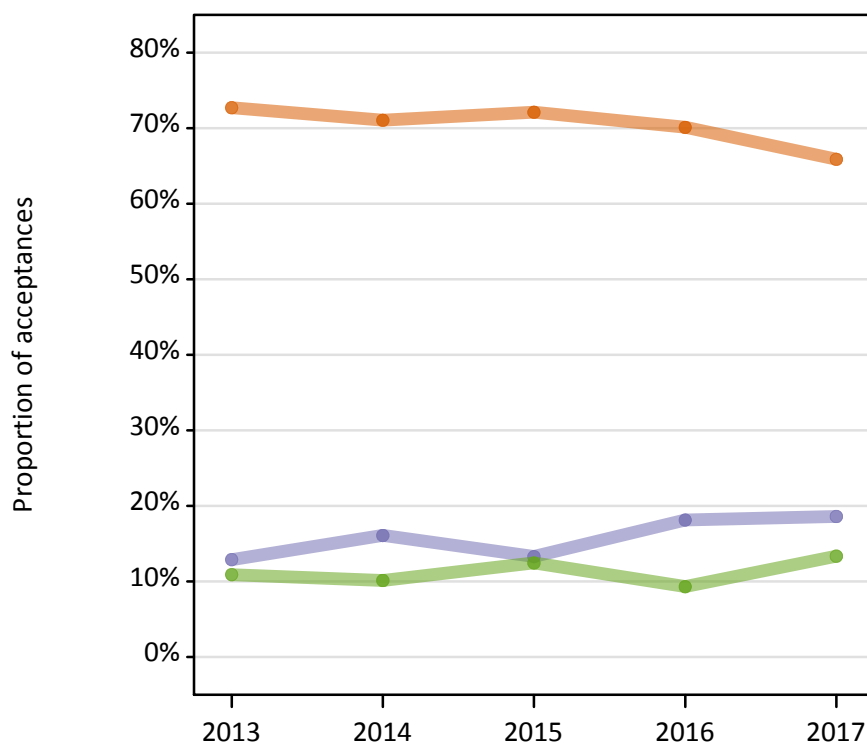
Applicant Reply	2013	2014	2015	2016	2017
Firm	24.9%	25.4%	23.8%	24.3%	23.5%
Insurance	22.7%	22.0%	20.9%	21.4%	20.6%
Decline	51.5%	52.1%	54.5%	53.3%	54.5%
Other	0.9%	0.5%	0.8%	1.0%	1.4%



## 4. Acceptance routes

### 4.1 Proportion of acceptances by route

- Firm choice
- Insurance choice
- Main scheme Clearing
- Extra
- Adjustment
- RPA
- Direct Clearing
- Other main scheme choice



### 4.2 Acceptances by route

Route	2013	2014	2015	2016	2017
Firm choice	295	285	335	285	275
Insurance choice	50	65	60	75	80
Main scheme Clearing	45	40	60	40	55
Extra	0	5	5	0	0
Adjustment	0	0	0	0	0
RPA	0	0	0	0	0
Direct Clearing	5	0	0	0	0
Other main scheme choice	5	5	0	5	5
All	405	405	465	410	420

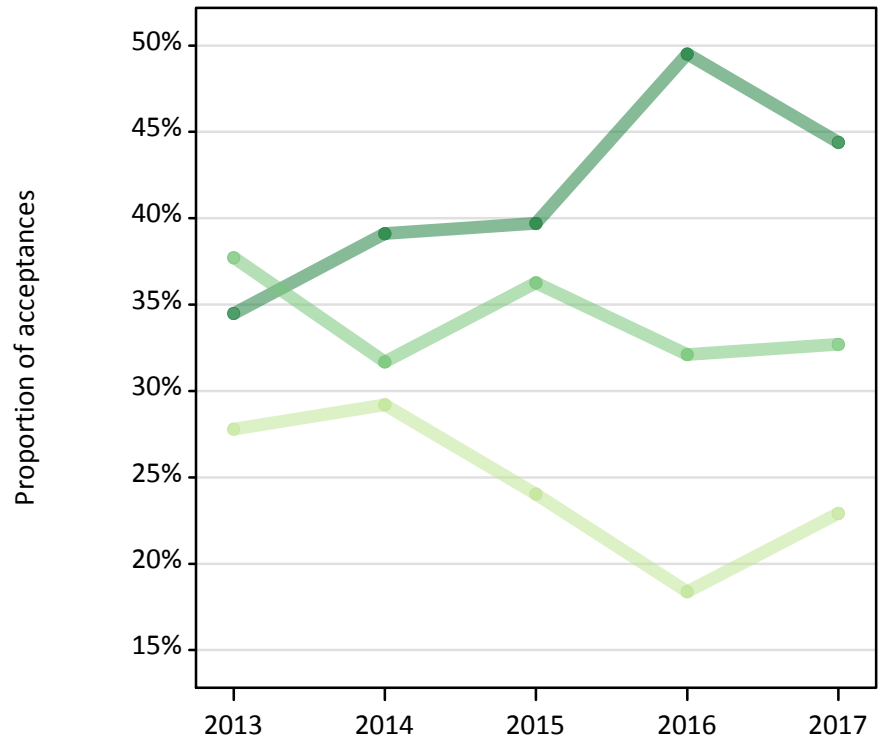
### 4.3 Proportion of acceptances by route

Route	2013	2014	2015	2016	2017
Firm choice	72.7%	71.0%	72.1%	70.1%	65.9%
Insurance choice	12.9%	16.1%	13.3%	18.1%	18.6%
Main scheme Clearing	10.9%	10.1%	12.4%	9.3%	13.4%
Extra	0.0%	0.0%	1.5%	0.0%	0.0%
Adjustment	0.0%	0.0%	0.0%	0.0%	0.0%
RPA	0.0%	0.0%	0.0%	0.0%	0.0%
Direct Clearing	0.0%	0.0%	0.0%	0.0%	0.0%
Other main scheme choice	1.7%	0.0%	0.0%	1.7%	1.2%

## 5. Acceptances by provider tariff group

### 5.1 Proportion of acceptances by provider group

- Higher tariff
- Medium tariff
- Lower tariff



### 5.2 Acceptances by provider group

Provider tariff group	2013	2014	2015	2016	2017
Lower tariff	110	120	110	75	95
Medium tariff	150	130	170	130	135
Higher tariff	140	160	185	200	185
All	405	405	465	410	420

### 5.3 Proportion of acceptances by provider group

Provider tariff group	2013	2014	2015	2016	2017
Lower tariff	27.8%	29.2%	24.0%	18.4%	22.9%
Medium tariff	37.7%	31.7%	36.3%	32.1%	32.7%
Higher tariff	34.5%	39.1%	39.7%	49.5%	44.4%

## 6. Acceptances by HE provider

### 6.1 Acceptances by HE provider

Top 20, 2017 rank

HEP and rank		2013	2014	2015	2016	2017
1	Queen's University Belfast	50	25	45	30	30
2	The University of Manchester	15	20	15	15	25
	Ulster University	35	35	15	15	25
4	UCL (University College London)	15	10	20	10	20
5	University of Leeds	5	5	5	15	15
	King's College London (University of London)	5	10	10	10	15
7	Imperial College London	10	5	10	15	10
	City, University of London	15	10	15	10	10
	Lancaster University	5	10	5	10	10
	The Manchester Metropolitan University	10	5	10	10	10
	The University of Sheffield	10	5	15	10	10
	University of Surrey	5	0	5	10	10
	The University of Nottingham	5	5	5	5	10
	The University of Huddersfield	5	10	5	0	10
	Sheffield Hallam University	10	5	5	0	10
16	Durham University	5	5	5	15	5
	University of Bath	5	5	5	10	5
	University of Bristol	5	0	5	10	5
	The University of Edinburgh	0	5	10	10	5
	The University of Essex	5	5	15	10	5
	The University of Liverpool	5	5	10	10	5
	The University of Warwick	10	15	15	10	5
	University of Birmingham	5	5	10	5	5
	University of Cambridge	5	0	0	5	5
	Coventry University	0	5	5	5	5

### 6.2 Total different HE providers applicants accepted to

	2013	2014	2015	2016	2017
Number of HE providers	47	52	51	51	45

## 7. Acceptances by JACS3 subject group

### 7.1 Acceptances by JACS3 subject group

JACS3 subject group	2013	2014	2015	2016	2017
Group A Medicine and Dentistry	10	10	10	10	10
Group B Subjects Allied to Medicine	30	15	25	30	25
Group C Biological Sciences	15	25	40	30	35
Group D Veterinary Sciences, Agriculture and related subjects	0	10	5	5	5
Group F Physical Sciences	15	20	25	25	20
Group G Mathematical Sciences	15	20	10	15	15
Group H Engineering	50	50	65	50	50
Group I Computer Sciences	25	25	30	25	25
Group J Technologies	0	0	5	0	0
Group K Architecture, Building and Planning	10	15	20	5	10
Group L Social studies	25	30	30	30	40
Group M Law	25	20	30	20	20
Group N Business and Administrative studies	85	95	100	85	80
Group P Mass Communication and Documentation	5	10	0	5	5
Group Q Linguistics, Classics and related subjects	10	5	5	5	5
Group R European Languages, Literature and related subjects	5	0	0	5	0
Group T Eastern, Asiatic, African, American and Australasian Languages, Literature and related subjects	0	0	0	0	0
Group V Historical and Philosophical studies	10	5	5	5	5
Group W Creative Arts and Design	10	10	15	15	20
Group X Education	5	5	5	0	5
Y Combined arts	10	0	0	5	5
Y Combined sciences	10	5	10	5	5
Y Combined social sciences	10	10	5	5	5
Y Sciences combined with social sciences or arts	10	10	10	15	10
Y Social sciences combined with arts	5	5	5	5	5
Z General, other combined & unknown	10	10	10	5	5
All	405	405	465	410	420

## 8. Acceptances by JACS3 subject

### 8.1 Acceptances by JACS3 subject

Top 20, 2017 rank

Subject and rank		2013	2014	2015	2016	2017
1	NN - Combinations within Business & Admin. Studies	25	25	25	30	20
	L1 - Economics	15	20	20	20	20
	M1 - Law by Area	20	20	30	20	20
	I1 - Computer Science	20	15	25	10	20
5	N2 - Management studies	20	15	20	25	15
	G1 - Mathematics	10	15	5	15	15
	B2 - Pharmacology, Toxicology and Pharmacy	10	5	5	5	15
	N1 - Business studies	15	15	20	5	15
9	H3 - Mechanical Engineering	10	10	15	20	10
	Y Combs of phys/math science with social studies/bus/law	5	5	5	10	10
	C8 - Psychology	10	5	15	10	10
	H6 - Electronic and Electrical Engineering	15	10	15	10	10
	N3 - Finance	5	10	15	10	10
	N4 - Accounting	10	15	10	10	10
	C1 - Biology	5	10	10	5	10
	W2 - Design studies	5	5	5	5	10
17	B1 - Anatomy, Physiology and Pathology	0	0	5	10	5
	N5 - Marketing	0	0	5	10	5
	Z Combs of 3 subjects, or other general courses	10	10	10	5	5
	A1 - Pre-clinical Medicine	5	10	10	5	5
	B9 - Others in Subjects allied to Medicine	10	5	10	5	5
	C9 - Others in Biological Sciences	0	0	0	5	5
	F1 - Chemistry	5	5	5	5	5
	F3 - Physics	5	10	10	5	5
	F8 - Physical geographical sciences	0	0	5	5	5

### 8.2 Total different JACS3 subjects applicants accepted to

	2013	2014	2015	2016	2017
Number of JACS3 subjects	47	39	47	43	46

## Technical notes and definitions

### Applicant

A person who has made an application in the UCAS system during the cycle reported. This includes those who submit applications for deferred entry.

### Acceptance / Placed applicant

An applicant who at the end of the cycle has been placed for entry into higher education.

### Acceptance rate

The number of acceptances divided by the number of applicants.

### Withdrawn

An applicant who no longer wishes to be considered for a place and completely withdraws their application.

### Deferred

An application for deferred entry. Most applications are into the academic year that starts immediately at the end of the application cycle.

### Deadline

One of key application deadlines during the UCAS application cycle. May be: 15 October for medicine and dentistry courses or applications to Oxford or Cambridge; 15 January for most undergraduate courses; 24 March for some art and design courses; 30 June for any other main scheme choices. Applicants who apply after 30 June can only enter directly into Clearing.

### Main scheme

The main UCAS application scheme through which up to five providers/courses can be applied to. This opens in September and closes to new applications on 30 June the following year.

### Direct to Clearing

Applicants who register to apply after 30 June. Applicants cannot make parallel applications through this route – only one application will be active at a given point in time.

### RPA

An RPA is a Record of Prior Acceptance, where an application is submitted to UCAS by a provider, when an unconditional firm has been offered and accepted by the applicant.

### Choice

An applicant's application to a course at a provider.

### Provider decision

Applications are referred to providers who consider the application and return a decision. The decision can be to make an offer (conditional or unconditional) or to reject the application. Applications that are yet to receive a decision are classified as 'Other'. In this report, if an application is withdrawn, it is classified as 'Reject'.

### Reply

When an applicant receives an offer to their application, they may respond by setting the offer as the 'Firm' choice, 'Insurance', or to 'decline' the offer. If an applicant received at least one offer, they may choose at most one to be their Firm, at most one to be their Insurance choice if they have at least two offers, and other offers must be declined.

### Provider tariff group

The grouping of providers based on the average levels of attainment of their accepted applicants (summarised through UCAS Tariff points) in a period of application cycles spanning from 2004 to 2011. Each group of providers accounted for around a third of all UK 18 year old acceptances in these cycles. Each group of providers accounted for around a third of all UK 18 year old acceptances in these cycles, with the following categories: 'Higher tariff', 'Medium tariff' and 'Lower tariff'.

### Acceptance route

Firm Choice, Insurance choice, Main Scheme Clearing, Direct Clearing, Adjustment, Extra, RPA, Other Main Scheme Choice

### Firm Choice

The applicant was accepted to their first choice. In order to be defined as placed at their firm choice, an applicant must have been placed at the provider with which they hold their firm choice at 30 June.

### Insurance Choice

The applicant was accepted to their second choice. In order to be defined as placed at their insurance choice, an applicant must have been placed at the provider with which they hold their insurance choice at 30 June.

### Other Main Scheme Choice

An applicant who applied by 30 June and was accepted to a main scheme choice but had not responded, or was awaiting an offer, at 30 June.

### Main Scheme Clearing

An applicant who was unsuccessful in the main scheme (i.e. applied before 30 June) and subsequently found a place using Clearing.

### Direct Clearing

An applicant who applied via Clearing without an initial application through the main scheme.

### Adjustment

A route where applicants who have met and exceeded the conditions of their firm choice choose to take up an alternative offer

### Extra

A route where applicants who held no offers after using all of their main scheme choices, make additional choices.

### JACS3 subject group

Classifies course applied to into one of 26 subject groups.

### JACS3 principal subject

Classifies course applied to into one of 215 detailed subject groups.

For more information about JACS3 subject coding, go to [www.hesa.ac.uk/support/documentation/jacs](http://www.hesa.ac.uk/support/documentation/jacs).