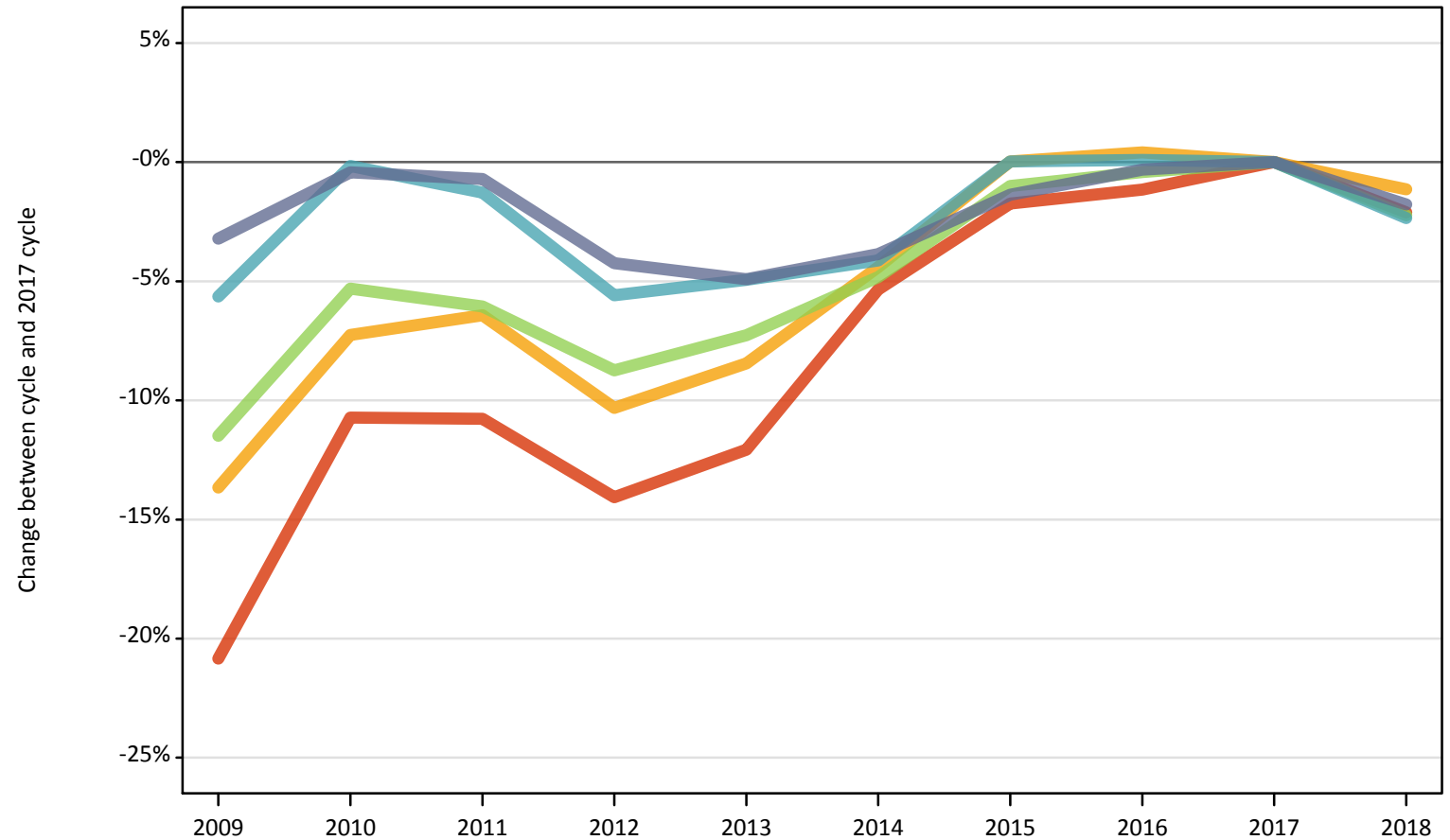


June Deadline Analysis: POLAR3 quintile

18 year old applicants by POLAR3 quintile and sex at the 30 June deadline

I.11.1 18 year old applicants by POLAR3 quintile: UK Difference between cycle and 2017 cycle

- Quintile 1
- Quintile 2
- Quintile 3
- Quintile 4
- Quintile 5



Note: The percentage change is not plotted in the above chart for groups with fewer than 500 applicants in any one cycle.

I.11.2 18 year old applicants by POLAR3 quintile: UK

POLAR3 quintile of applicant		2009	2010	2011	2012	2013	2014	2015	2016	2017	2018
UK	Quintile 1	24,090	27,170	27,160	26,150	26,760	28,810	29,910	30,090	30,440	29,800
	Quintile 2	36,770	39,500	39,850	38,200	38,990	40,710	42,600	42,760	42,590	42,100
	Quintile 3	47,600	50,930	50,520	49,080	49,870	51,190	53,240	53,560	53,780	52,580
	Quintile 4	60,710	64,240	63,520	60,750	61,170	61,690	64,370	64,400	64,350	62,830
	Quintile 5	83,620	86,030	85,790	82,740	82,160	83,070	85,210	86,130	86,400	84,870

I.11.3 18 year old applicants by POLAR3 quintile: UK

Difference between cycle and 2017 cycle

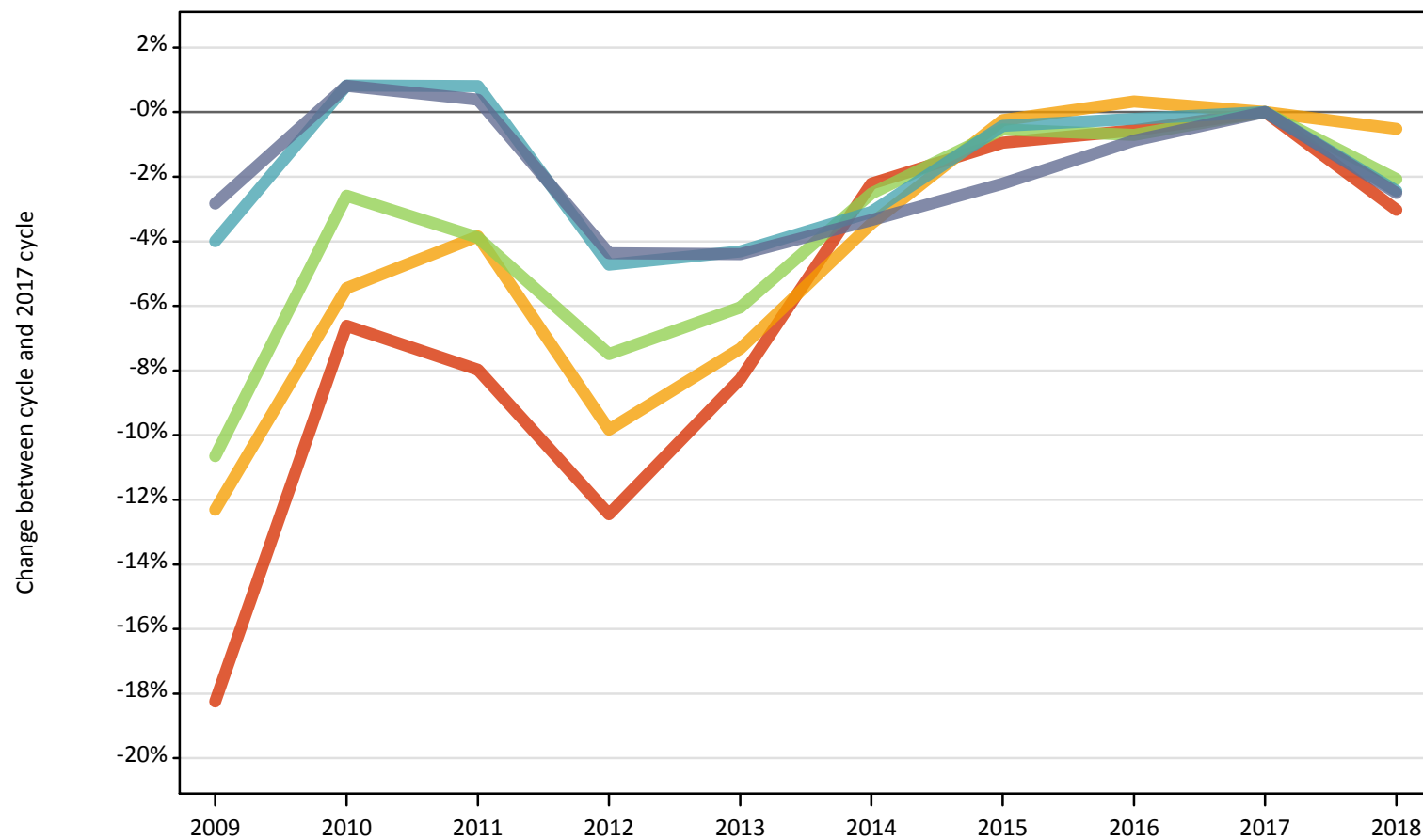
POLAR3 quintile of applicant		2009	2010	2011	2012	2013	2014	2015	2016	2017	2018
UK	Quintile 1	-21%	-11%	-11%	-14%	-12%	-5%	-2%	-1%	0%	-2%
	Quintile 2	-14%	-7%	-6%	-10%	-8%	-4%	0%	0%	0%	-1%
	Quintile 3	-11%	-5%	-6%	-9%	-7%	-5%	-1%	-0%	0%	-2%
	Quintile 4	-6%	-0%	-1%	-6%	-5%	-4%	0%	0%	0%	-2%
	Quintile 5	-3%	-0%	-1%	-4%	-5%	-4%	-1%	-0%	0%	-2%

Note: The percentage change is not recorded in the above table for groups with fewer than 10 applicants in that cycle or in the 2017 cycle.

I.11.4 18 year old applicants by POLAR3 quintile: UK (Men)

Difference between cycle and 2017 cycle

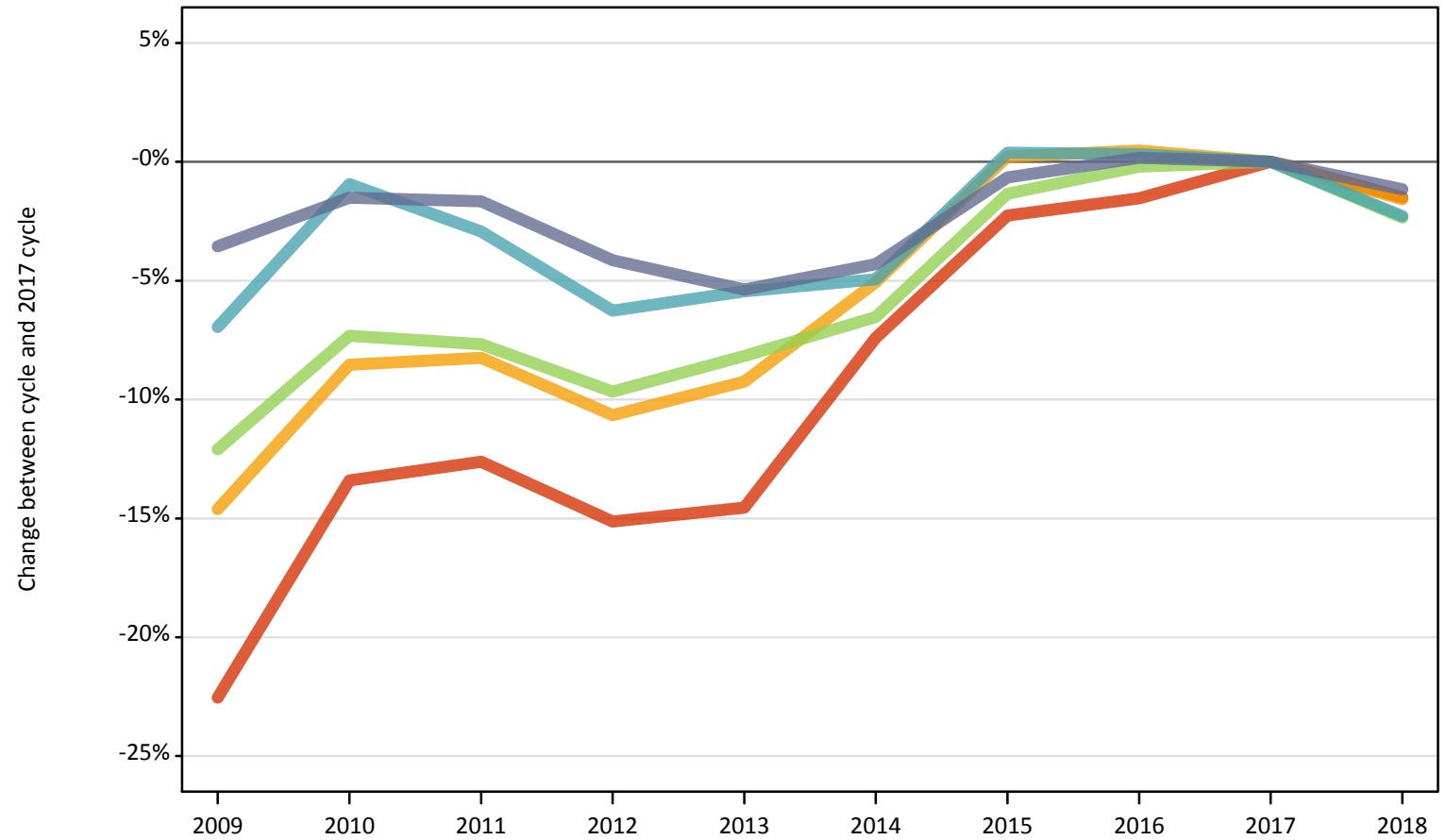
- Quintile 1
- Quintile 2
- Quintile 3
- Quintile 4
- Quintile 5



Note: The percentage change is not plotted in the above chart for groups with fewer than 500 applicants in any one cycle.

I.11.5 18 year old applicants by POLAR3 quintile: UK (Women)
Difference between cycle and 2017 cycle

- Quintile 1
- Quintile 2
- Quintile 3
- Quintile 4
- Quintile 5



Note: The percentage change is not plotted in the above chart for groups with fewer than 500 applicants in any one cycle.

I.11.6 18 year old applicants by sex and POLAR3 quintile: UK

Sex and POLAR3 quintile of applicant		2009	2010	2011	2012	2013	2014	2015	2016	2017	2018
Women	Quintile 1	14,260	15,940	16,090	15,620	15,730	17,050	17,990	18,130	18,410	18,130
	Quintile 2	21,330	22,850	22,920	22,320	22,670	23,710	25,030	25,100	24,980	24,590
	Quintile 3	27,170	28,640	28,530	27,920	28,380	28,890	30,490	30,840	30,900	30,180
	Quintile 4	33,500	35,670	34,950	33,750	34,050	34,230	36,150	36,120	36,010	35,180
	Quintile 5	44,680	45,630	45,560	44,410	43,840	44,330	46,030	46,410	46,330	45,800
Men	Quintile 1	9,830	11,230	11,070	10,530	11,030	11,760	11,910	11,960	12,030	11,660
	Quintile 2	15,440	16,650	16,930	15,880	16,320	17,000	17,570	17,670	17,610	17,520
	Quintile 3	20,440	22,290	21,990	21,160	21,490	22,300	22,750	22,710	22,880	22,400
	Quintile 4	27,210	28,580	28,570	27,000	27,120	27,460	28,220	28,280	28,340	27,650
	Quintile 5	38,940	40,400	40,230	38,320	38,310	38,730	39,190	39,720	40,070	39,070

I.11.7 18 year old applicants by sex and POLAR3 quintile: UK

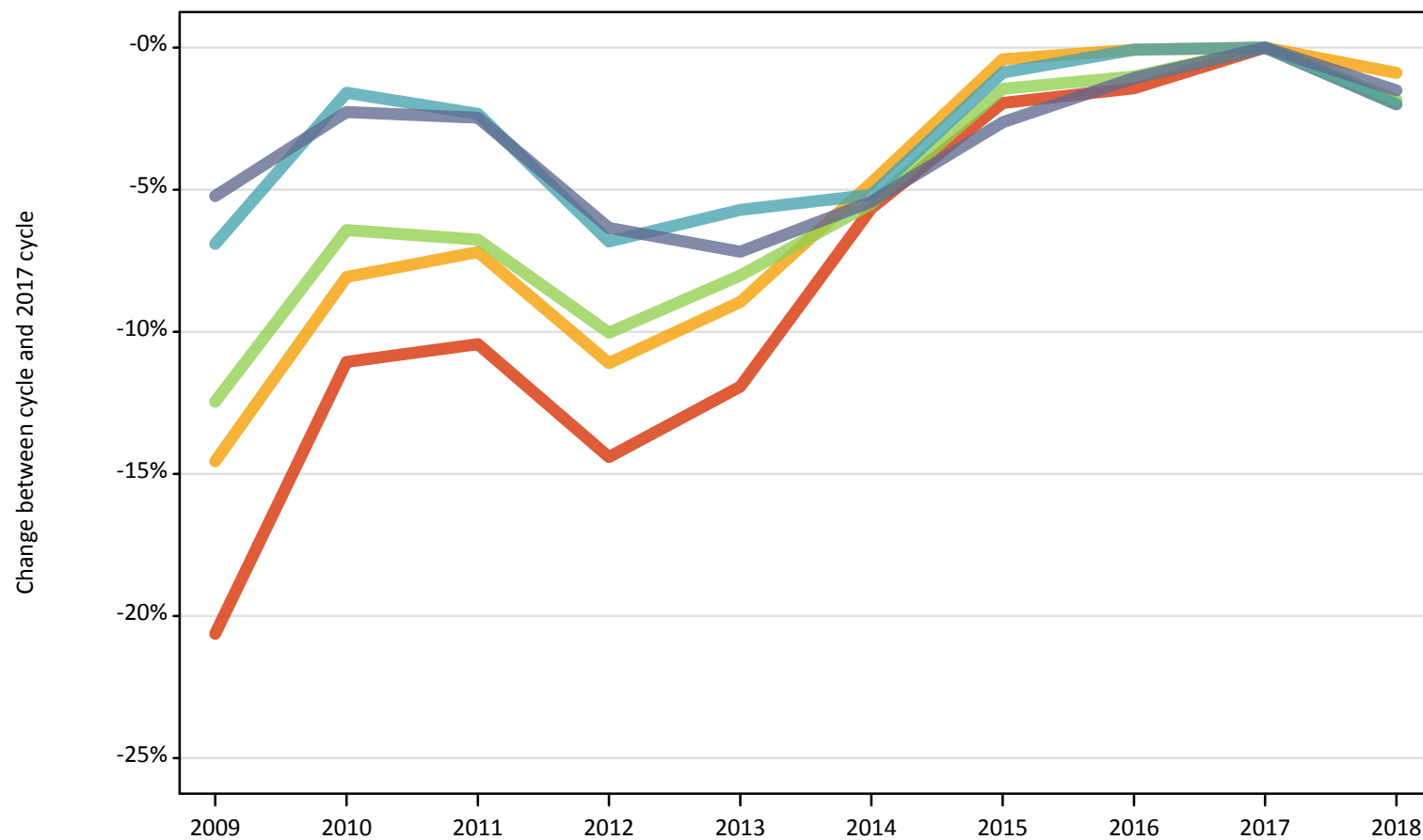
Difference between cycle and 2017 cycle

Sex and POLAR3 quintile of applicant		2009	2010	2011	2012	2013	2014	2015	2016	2017	2018
Women	Quintile 1	-23%	-13%	-13%	-15%	-15%	-7%	-2%	-2%	0%	-1%
	Quintile 2	-15%	-9%	-8%	-11%	-9%	-5%	0%	0%	0%	-2%
	Quintile 3	-12%	-7%	-8%	-10%	-8%	-7%	-1%	-0%	0%	-2%
	Quintile 4	-7%	-1%	-3%	-6%	-5%	-5%	0%	0%	0%	-2%
	Quintile 5	-4%	-2%	-2%	-4%	-5%	-4%	-1%	0%	0%	-1%
Men	Quintile 1	-18%	-7%	-8%	-12%	-8%	-2%	-1%	-1%	0%	-3%
	Quintile 2	-12%	-5%	-4%	-10%	-7%	-3%	-0%	0%	0%	-1%
	Quintile 3	-11%	-3%	-4%	-7%	-6%	-3%	-1%	-1%	0%	-2%
	Quintile 4	-4%	1%	1%	-5%	-4%	-3%	-0%	-0%	0%	-2%
	Quintile 5	-3%	1%	0%	-4%	-4%	-3%	-2%	-1%	0%	-3%

Note: The percentage change is not recorded in the above table for groups with fewer than 10 applicants in that cycle or in the 2017 cycle.

I.11.8 18 year old applicants by POLAR3 quintile: England
Difference between cycle and 2017 cycle

- Quintile 1
- Quintile 2
- Quintile 3
- Quintile 4
- Quintile 5



Note: The percentage change is not plotted in the above chart for groups with fewer than 500 applicants in any one cycle.

I.11.9 18 year old applicants by POLAR3 quintile: England

POLAR3 quintile of applicant		2009	2010	2011	2012	2013	2014	2015	2016	2017	2018
England	Quintile 1	21,370	23,940	24,110	23,040	23,710	25,390	26,390	26,530	26,920	26,380
	Quintile 2	31,520	33,920	34,240	32,800	33,590	35,140	36,740	36,860	36,890	36,560
	Quintile 3	41,070	43,900	43,750	42,210	43,150	44,340	46,230	46,440	46,920	46,060
	Quintile 4	50,150	53,010	52,620	50,200	50,790	51,080	53,390	53,830	53,870	52,790
	Quintile 5	67,330	69,420	69,280	66,530	65,940	67,190	69,170	70,280	71,040	69,970

I.11.10 18 year old applicants by POLAR3 quintile: England

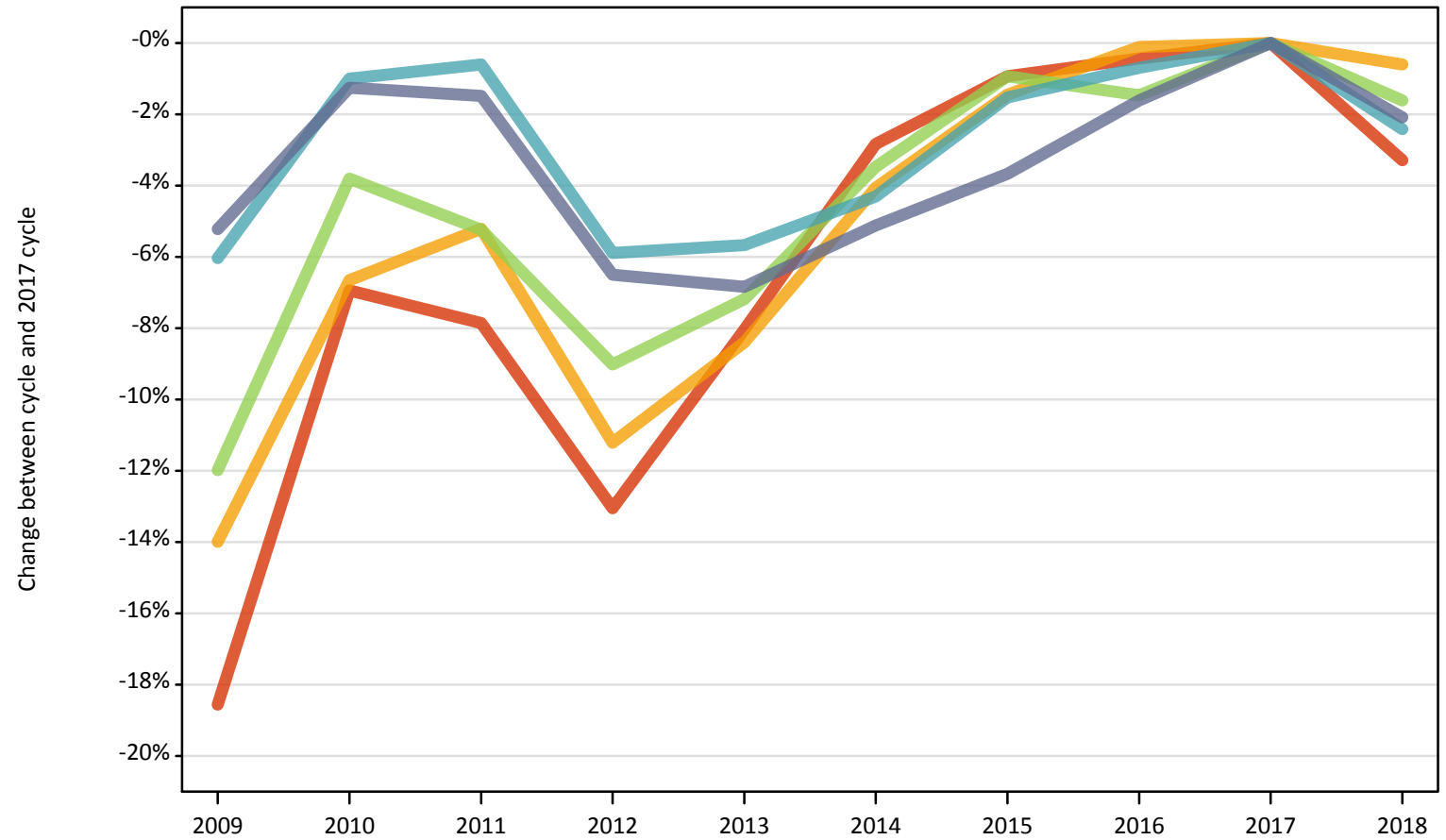
Difference between cycle and 2017 cycle

POLAR3 quintile of applicant		2009	2010	2011	2012	2013	2014	2015	2016	2017	2018
England	Quintile 1	-21%	-11%	-10%	-14%	-12%	-6%	-2%	-1%	0%	-2%
	Quintile 2	-15%	-8%	-7%	-11%	-9%	-5%	-0%	-0%	0%	-1%
	Quintile 3	-12%	-6%	-7%	-10%	-8%	-5%	-1%	-1%	0%	-2%
	Quintile 4	-7%	-2%	-2%	-7%	-6%	-5%	-1%	-0%	0%	-2%
	Quintile 5	-5%	-2%	-2%	-6%	-7%	-5%	-3%	-1%	0%	-2%

Note: The percentage change is not recorded in the above table for groups with fewer than 10 applicants in that cycle or in the 2017 cycle.

I.11.11 18 year old applicants by POLAR3 quintile: England (Men)
Difference between cycle and 2017 cycle

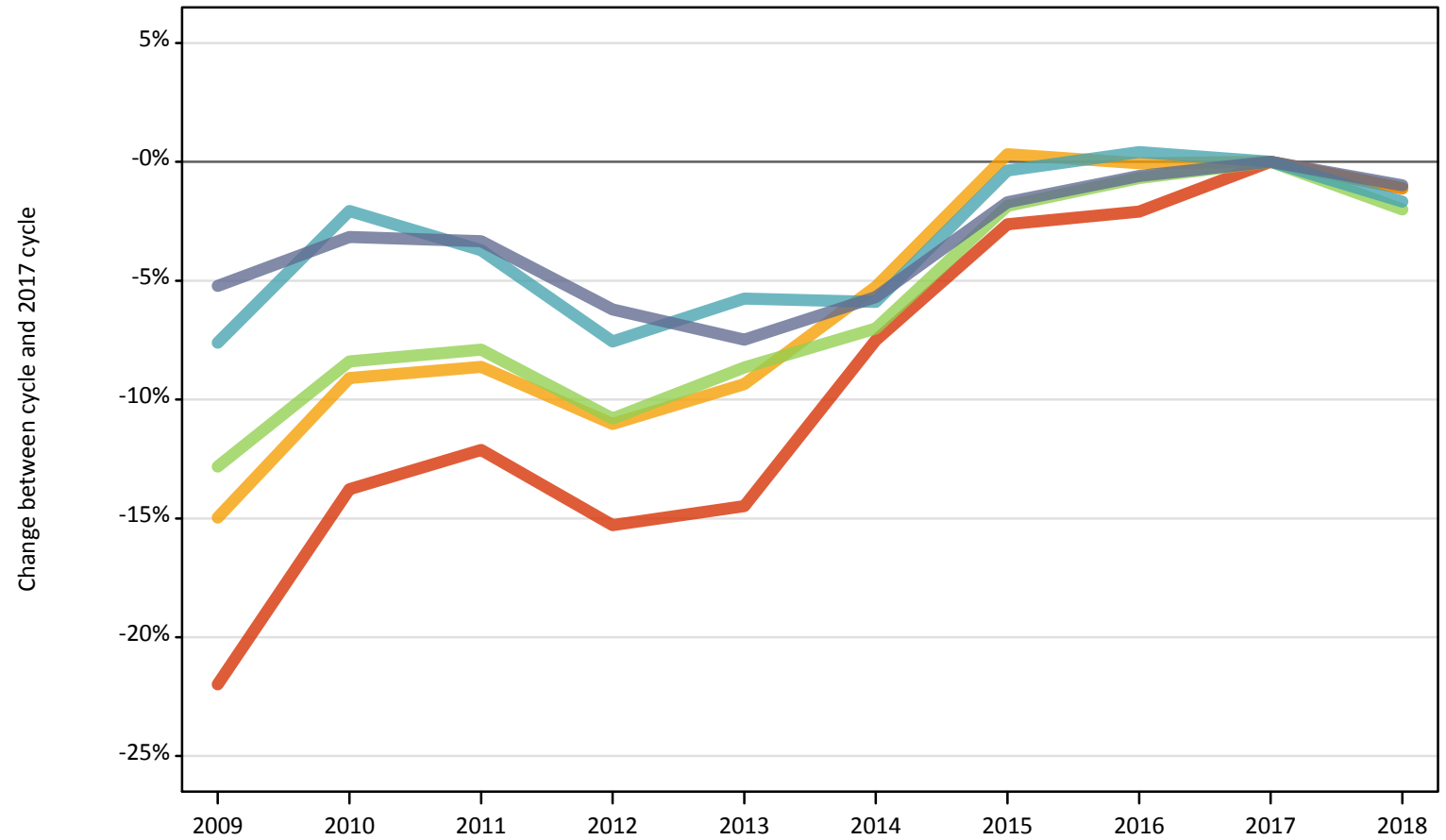
- Quintile 1
- Quintile 2
- Quintile 3
- Quintile 4
- Quintile 5



Note: The percentage change is not plotted in the above chart for groups with fewer than 500 applicants in any one cycle.

I.11.12 18 year old applicants by POLAR3 quintile: England (Women)
Difference between cycle and 2017 cycle

- Quintile 1
- Quintile 2
- Quintile 3
- Quintile 4
- Quintile 5



Note: The percentage change is not plotted in the above chart for groups with fewer than 500 applicants in any one cycle.

I.11.13 18 year old applicants by sex and POLAR3 quintile: England

Sex and POLAR3 quintile of applicant		2009	2010	2011	2012	2013	2014	2015	2016	2017	2018
Women	Quintile 1	12,670	14,000	14,270	13,760	13,890	15,020	15,810	15,900	16,240	16,060
	Quintile 2	18,230	19,480	19,590	19,070	19,430	20,310	21,500	21,420	21,430	21,200
	Quintile 3	23,340	24,530	24,660	23,880	24,460	24,890	26,280	26,590	26,770	26,240
	Quintile 4	27,570	29,220	28,730	27,580	28,120	28,080	29,730	29,960	29,840	29,340
	Quintile 5	35,800	36,570	36,510	35,420	34,940	35,620	37,120	37,540	37,770	37,390
Men	Quintile 1	8,700	9,940	9,840	9,280	9,820	10,380	10,580	10,630	10,680	10,330
	Quintile 2	13,300	14,430	14,650	13,730	14,160	14,830	15,240	15,440	15,460	15,370
	Quintile 3	17,730	19,380	19,090	18,330	18,700	19,440	19,960	19,850	20,150	19,820
	Quintile 4	22,580	23,790	23,890	22,620	22,670	23,000	23,670	23,870	24,030	23,450
	Quintile 5	31,530	32,850	32,780	31,110	31,000	31,570	32,050	32,730	33,270	32,570

I.11.14 18 year old applicants by sex and POLAR3 quintile: England

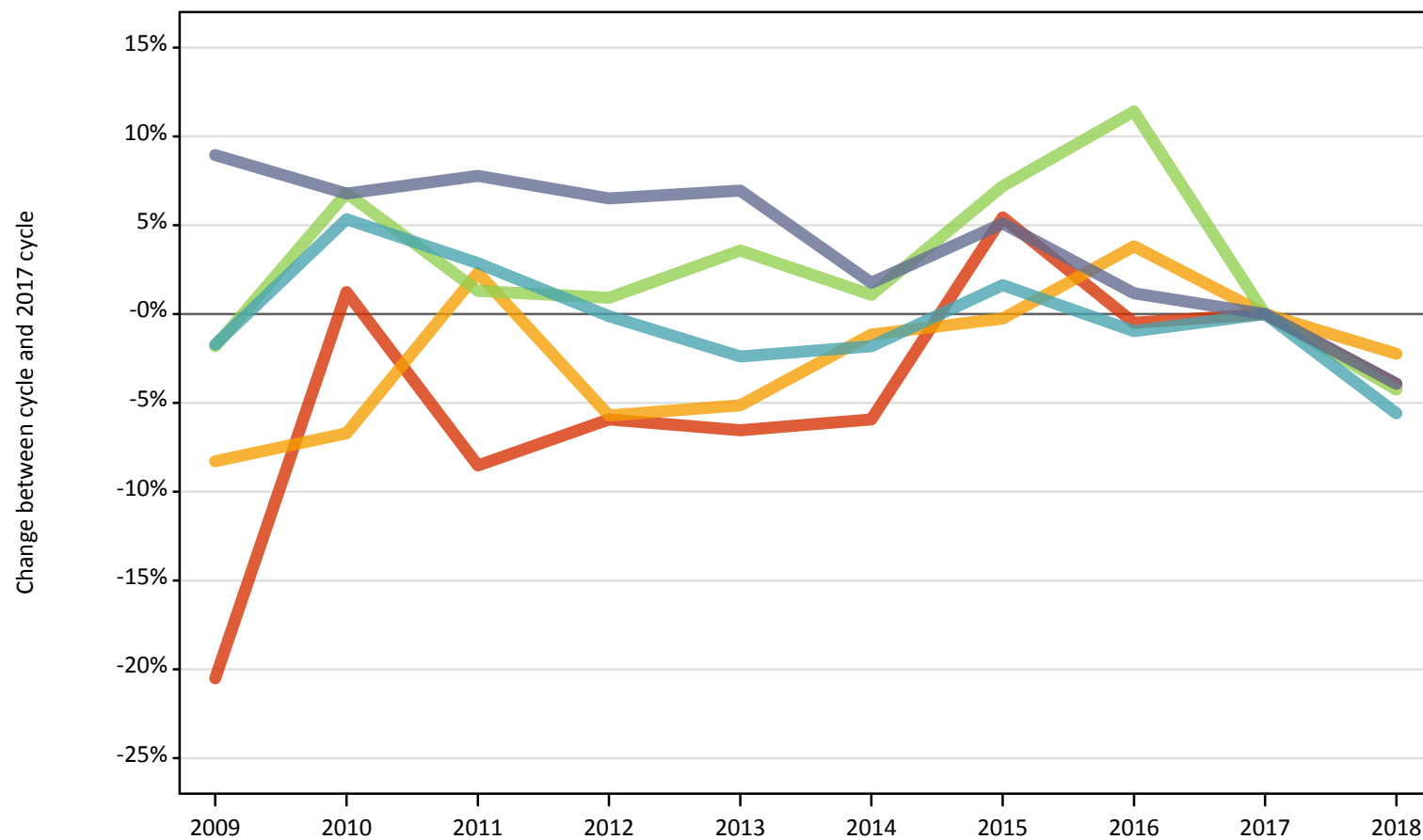
Difference between cycle and 2017 cycle

Sex and POLAR3 quintile of applicant		2009	2010	2011	2012	2013	2014	2015	2016	2017	2018
Women	Quintile 1	-22%	-14%	-12%	-15%	-14%	-8%	-3%	-2%	0%	-1%
	Quintile 2	-15%	-9%	-9%	-11%	-9%	-5%	0%	-0%	0%	-1%
	Quintile 3	-13%	-8%	-8%	-11%	-9%	-7%	-2%	-1%	0%	-2%
	Quintile 4	-8%	-2%	-4%	-8%	-6%	-6%	-0%	0%	0%	-2%
	Quintile 5	-5%	-3%	-3%	-6%	-7%	-6%	-2%	-1%	0%	-1%
Men	Quintile 1	-19%	-7%	-8%	-13%	-8%	-3%	-1%	-0%	0%	-3%
	Quintile 2	-14%	-7%	-5%	-11%	-8%	-4%	-1%	-0%	0%	-1%
	Quintile 3	-12%	-4%	-5%	-9%	-7%	-3%	-1%	-1%	0%	-2%
	Quintile 4	-6%	-1%	-1%	-6%	-6%	-4%	-2%	-1%	0%	-2%
	Quintile 5	-5%	-1%	-1%	-7%	-7%	-5%	-4%	-2%	0%	-2%

Note: The percentage change is not recorded in the above table for groups with fewer than 10 applicants in that cycle or in the 2017 cycle.

I.11.15 18 year old applicants by POLAR3 quintile: Northern Ireland
Difference between cycle and 2017 cycle

- Quintile 1
- Quintile 2
- Quintile 3
- Quintile 4
- Quintile 5



Note: The percentage change is not plotted in the above chart for groups with fewer than 500 applicants in any one cycle.

I.11.16 18 year old applicants by POLAR3 quintile: Northern Ireland

POLAR3 quintile of applicant		2009	2010	2011	2012	2013	2014	2015	2016	2017	2018
Northern Ireland	Quintile 1	640	820	740	760	760	760	850	810	810	780
	Quintile 2	1,110	1,130	1,240	1,140	1,150	1,190	1,200	1,250	1,210	1,180
	Quintile 3	1,730	1,880	1,790	1,780	1,830	1,780	1,890	1,960	1,760	1,690
	Quintile 4	3,460	3,710	3,620	3,520	3,440	3,460	3,580	3,490	3,520	3,320
	Quintile 5	4,590	4,500	4,540	4,490	4,510	4,290	4,430	4,270	4,220	4,050

I.11.17 18 year old applicants by POLAR3 quintile: Northern Ireland

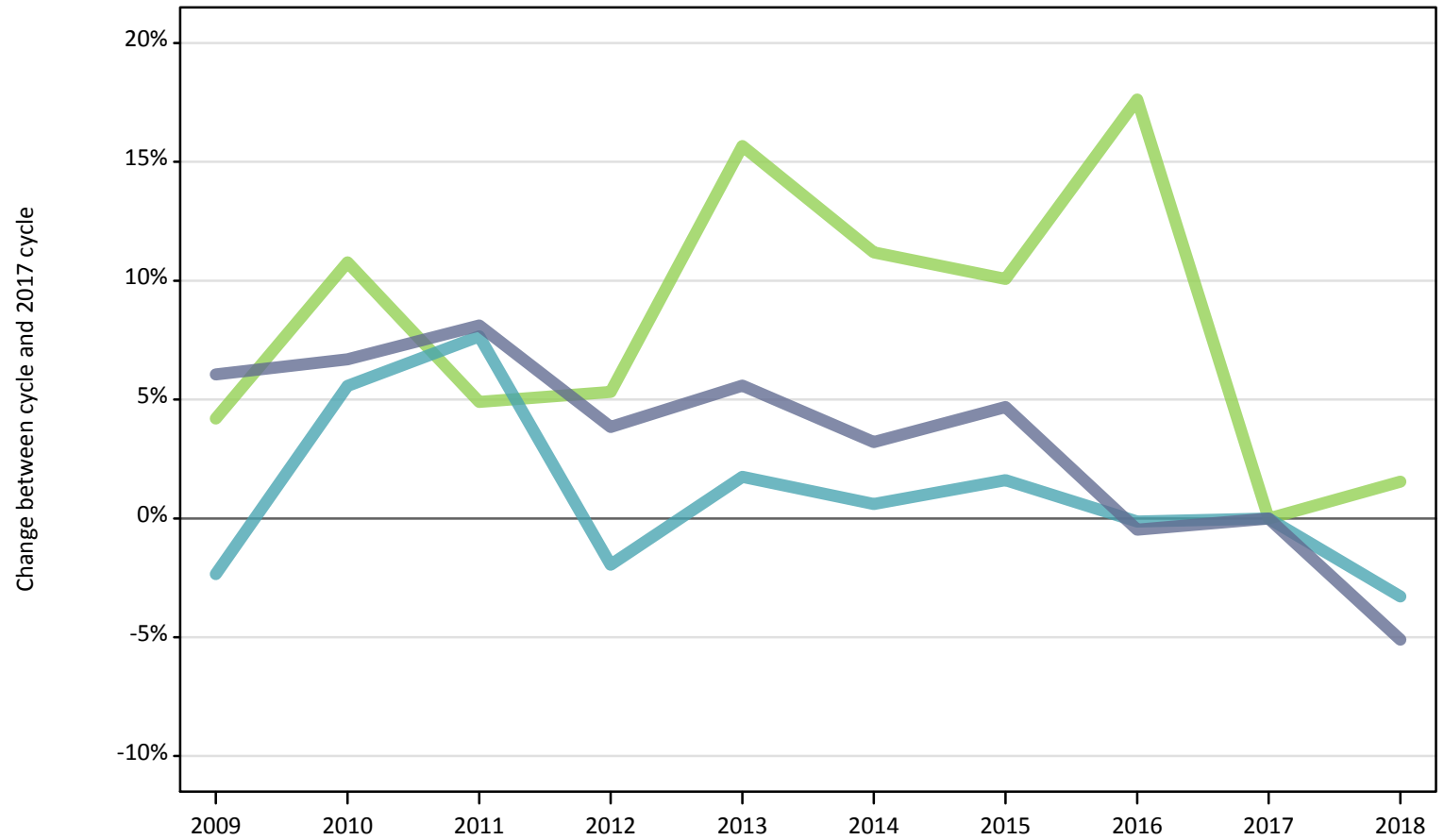
Difference between cycle and 2017 cycle

POLAR3 quintile of applicant		2009	2010	2011	2012	2013	2014	2015	2016	2017	2018
Northern Ireland	Quintile 1	-20%	1%	-9%	-6%	-7%	-6%	5%	-0%	0%	-4%
	Quintile 2	-8%	-7%	2%	-6%	-5%	-1%	-0%	4%	0%	-2%
	Quintile 3	-2%	7%	1%	1%	4%	1%	7%	11%	0%	-4%
	Quintile 4	-2%	5%	3%	-0%	-2%	-2%	2%	-1%	0%	-6%
	Quintile 5	9%	7%	8%	6%	7%	2%	5%	1%	0%	-4%

Note: The percentage change is not recorded in the above table for groups with fewer than 10 applicants in that cycle or in the 2017 cycle.

I.11.18 18 year old applicants by POLAR3 quintile: Northern Ireland (Men)
Difference between cycle and 2017 cycle

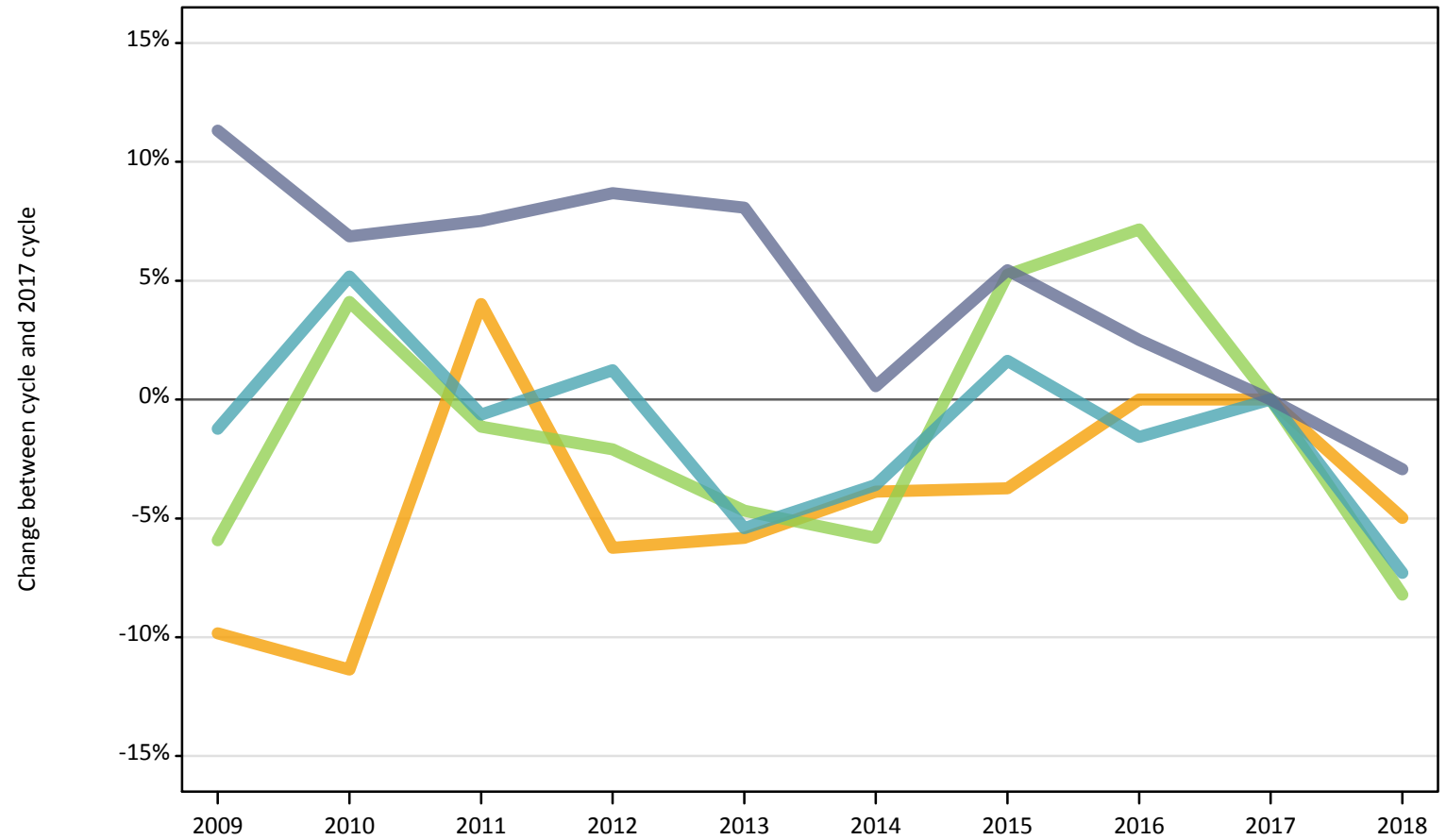
- Quintile 1
- Quintile 2
- Quintile 3
- Quintile 4
- Quintile 5



Note: The percentage change is not plotted in the above chart for groups with fewer than 500 applicants in any one cycle.

I.11.19 18 year old applicants by POLAR3 quintile: Northern Ireland (Women)
Difference between cycle and 2017 cycle

- Quintile 1
- Quintile 2
- Quintile 3
- Quintile 4
- Quintile 5



Note: The percentage change is not plotted in the above chart for groups with fewer than 500 applicants in any one cycle.

I.11.20 18 year old applicants by sex and POLAR3 quintile: Northern Ireland

Sex and POLAR3 quintile of applicant		2009	2010	2011	2012	2013	2014	2015	2016	2017	2018
Women	Quintile 1	370	490	430	420	420	430	530	480	470	440
	Quintile 2	650	640	750	680	680	690	700	720	720	690
	Quintile 3	990	1,090	1,040	1,030	1,000	990	1,100	1,120	1,050	960
	Quintile 4	2,010	2,140	2,020	2,060	1,920	1,960	2,060	2,000	2,030	1,880
	Quintile 5	2,580	2,480	2,490	2,520	2,500	2,330	2,440	2,380	2,320	2,250
Men	Quintile 1	270	340	310	340	340	330	330	330	350	340
	Quintile 2	460	490	480	460	470	500	510	530	490	490
	Quintile 3	750	790	750	750	830	800	790	840	720	730
	Quintile 4	1,460	1,570	1,600	1,460	1,520	1,500	1,510	1,490	1,490	1,440
	Quintile 5	2,010	2,030	2,050	1,970	2,010	1,960	1,990	1,890	1,900	1,800

I.11.21 18 year old applicants by sex and POLAR3 quintile: Northern Ireland

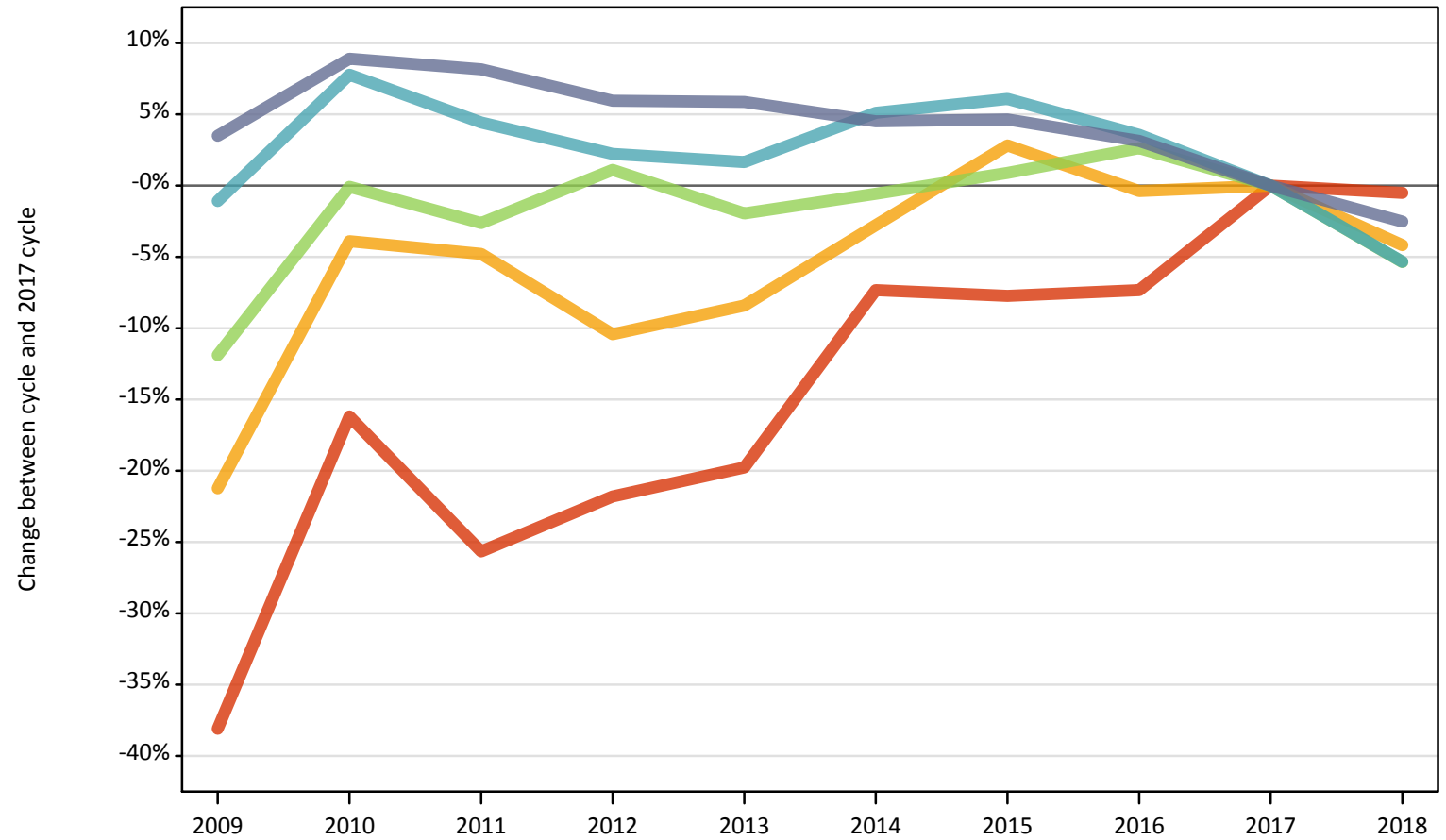
Difference between cycle and 2017 cycle

Sex and POLAR3 quintile of applicant		2009	2010	2011	2012	2013	2014	2015	2016	2017	2018
Women	Quintile 1	-20%	4%	-8%	-9%	-10%	-8%	14%	3%	0%	-5%
	Quintile 2	-10%	-11%	4%	-6%	-6%	-4%	-4%	0%	0%	-5%
	Quintile 3	-6%	4%	-1%	-2%	-5%	-6%	5%	7%	0%	-8%
	Quintile 4	-1%	5%	-1%	1%	-5%	-4%	2%	-2%	0%	-7%
	Quintile 5	11%	7%	8%	9%	8%	1%	5%	3%	0%	-3%
Men	Quintile 1	-21%	-3%	-9%	-1%	-2%	-3%	-6%	-5%	0%	-2%
	Quintile 2	-6%	0%	-0%	-5%	-4%	3%	5%	9%	0%	2%
	Quintile 3	4%	11%	5%	5%	16%	11%	10%	18%	0%	2%
	Quintile 4	-2%	6%	8%	-2%	2%	1%	2%	-0%	0%	-3%
	Quintile 5	6%	7%	8%	4%	6%	3%	5%	-0%	0%	-5%

Note: The percentage change is not recorded in the above table for groups with fewer than 10 applicants in that cycle or in the 2017 cycle.

I.11.22 18 year old applicants by POLAR3 quintile: Scotland
Difference between cycle and 2017 cycle

- Quintile 1
- Quintile 2
- Quintile 3
- Quintile 4
- Quintile 5



Note: The percentage change is not plotted in the above chart for groups with fewer than 500 applicants in any one cycle.

I.11.23 18 year old applicants by POLAR3 quintile: Scotland

POLAR3 quintile of applicant		2009	2010	2011	2012	2013	2014	2015	2016	2017	2018
Scotland	Quintile 1	610	820	730	770	790	910	910	910	980	980
	Quintile 2	1,680	2,050	2,030	1,910	1,950	2,070	2,190	2,120	2,130	2,040
	Quintile 3	2,710	3,070	3,000	3,110	3,020	3,060	3,100	3,160	3,080	2,910
	Quintile 4	4,390	4,780	4,630	4,540	4,510	4,660	4,710	4,600	4,440	4,200
	Quintile 5	8,530	8,980	8,910	8,730	8,730	8,610	8,620	8,500	8,240	8,030

I.11.24 18 year old applicants by POLAR3 quintile: Scotland

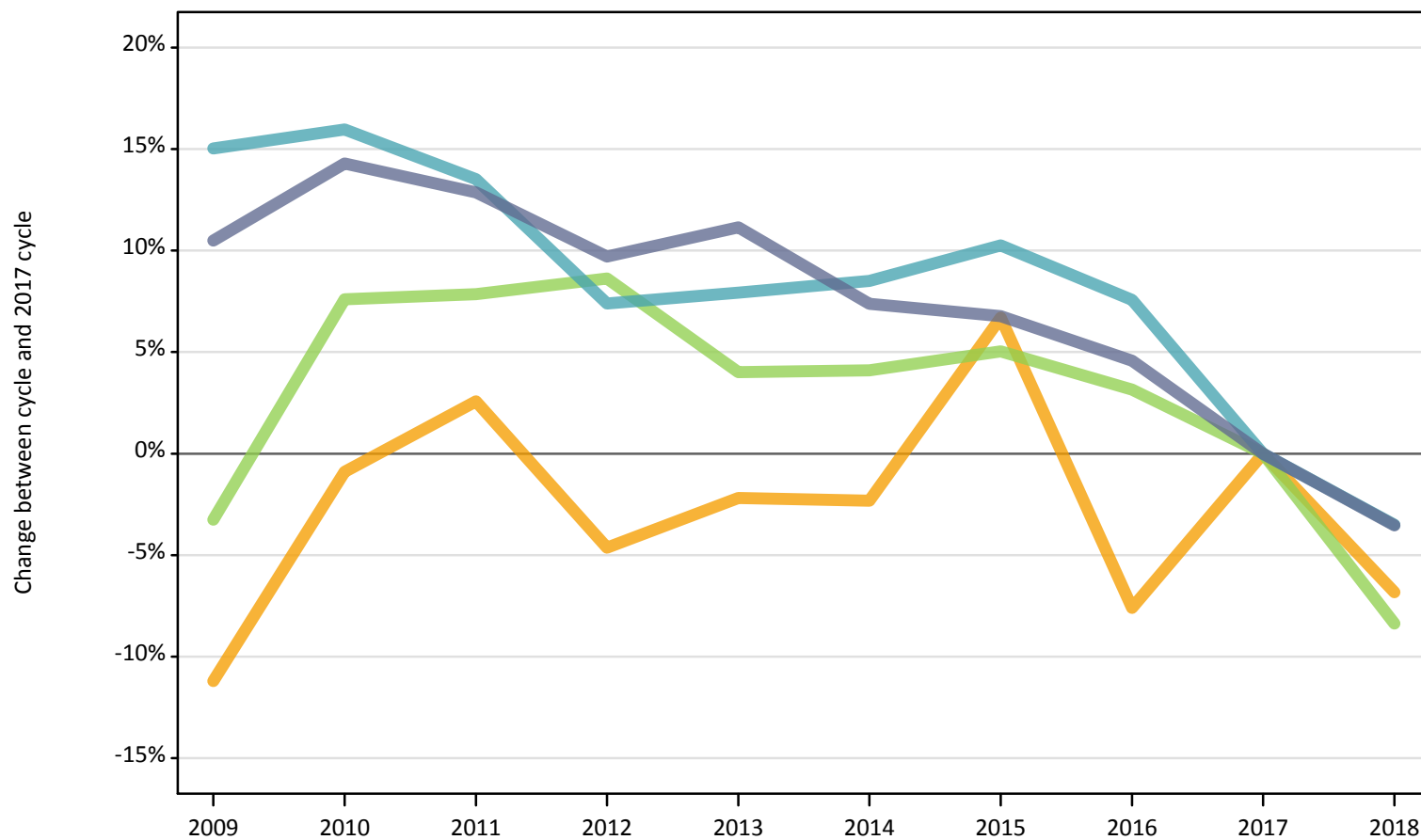
Difference between cycle and 2017 cycle

POLAR3 quintile of applicant		2009	2010	2011	2012	2013	2014	2015	2016	2017	2018
Scotland	Quintile 1	-38%	-16%	-26%	-22%	-20%	-7%	-8%	-7%	0%	-1%
	Quintile 2	-21%	-4%	-5%	-10%	-8%	-3%	3%	-0%	0%	-4%
	Quintile 3	-12%	-0%	-3%	1%	-2%	-1%	1%	3%	0%	-5%
	Quintile 4	-1%	8%	4%	2%	2%	5%	6%	4%	0%	-5%
	Quintile 5	3%	9%	8%	6%	6%	5%	5%	3%	0%	-3%

Note: The percentage change is not recorded in the above table for groups with fewer than 10 applicants in that cycle or in the 2017 cycle.

I.11.25 18 year old applicants by POLAR3 quintile: Scotland (Men)
Difference between cycle and 2017 cycle

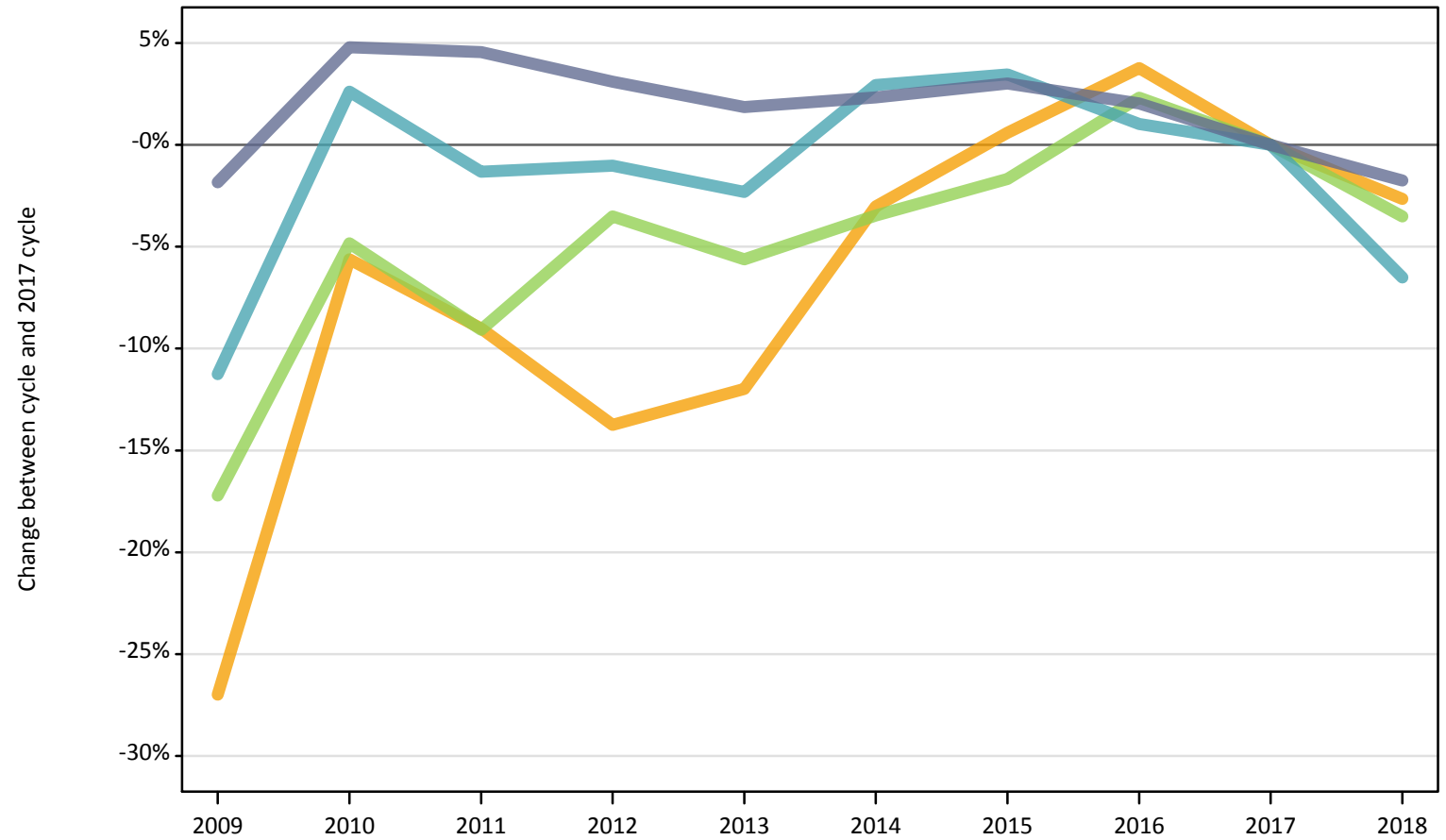
- Quintile 1
- Quintile 2
- Quintile 3
- Quintile 4
- Quintile 5



Note: The percentage change is not plotted in the above chart for groups with fewer than 500 applicants in any one cycle.

I.11.26 18 year old applicants by POLAR3 quintile: Scotland (Women)
Difference between cycle and 2017 cycle

- Quintile 1
- Quintile 2
- Quintile 3
- Quintile 4
- Quintile 5



Note: The percentage change is not plotted in the above chart for groups with fewer than 500 applicants in any one cycle.

I.11.27 18 year old applicants by sex and POLAR3 quintile: Scotland

Sex and POLAR3 quintile of applicant		2009	2010	2011	2012	2013	2014	2015	2016	2017	2018
Women	Quintile 1	360	510	440	480	490	560	570	590	650	620
	Quintile 2	990	1,280	1,230	1,170	1,190	1,310	1,360	1,400	1,350	1,320
	Quintile 3	1,580	1,810	1,730	1,840	1,800	1,840	1,870	1,950	1,910	1,840
	Quintile 4	2,420	2,790	2,690	2,690	2,660	2,800	2,820	2,750	2,720	2,540
	Quintile 5	4,590	4,900	4,890	4,830	4,770	4,790	4,820	4,780	4,680	4,600
Men	Quintile 1	250	320	300	290	300	350	330	320	330	360
	Quintile 2	690	770	800	740	760	760	830	720	780	720
	Quintile 3	1,130	1,260	1,260	1,270	1,220	1,220	1,230	1,210	1,170	1,070
	Quintile 4	1,970	1,990	1,950	1,840	1,850	1,860	1,890	1,850	1,720	1,660
	Quintile 5	3,940	4,070	4,020	3,910	3,960	3,830	3,800	3,730	3,560	3,440

I.11.28 18 year old applicants by sex and POLAR3 quintile: Scotland

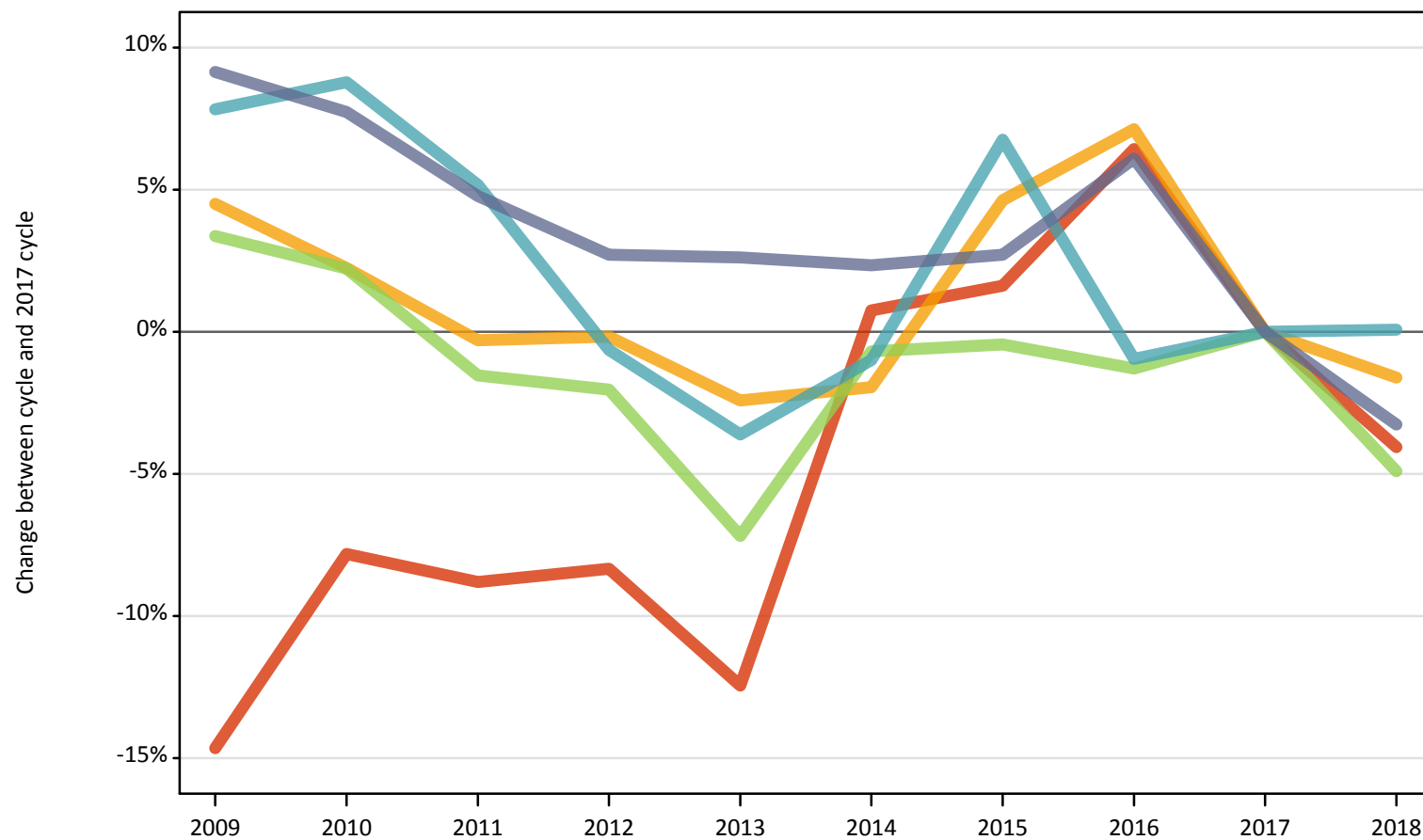
Difference between cycle and 2017 cycle

Sex and POLAR3 quintile of applicant		2009	2010	2011	2012	2013	2014	2015	2016	2017	2018
Women	Quintile 1	-44%	-22%	-33%	-25%	-25%	-14%	-11%	-9%	0%	-5%
	Quintile 2	-27%	-6%	-9%	-14%	-12%	-3%	1%	4%	0%	-3%
	Quintile 3	-17%	-5%	-9%	-4%	-6%	-3%	-2%	2%	0%	-4%
	Quintile 4	-11%	3%	-1%	-1%	-2%	3%	3%	1%	0%	-7%
	Quintile 5	-2%	5%	5%	3%	2%	2%	3%	2%	0%	-2%
Men	Quintile 1	-27%	-5%	-12%	-15%	-10%	5%	-1%	-3%	0%	7%
	Quintile 2	-11%	-1%	3%	-5%	-2%	-2%	7%	-8%	0%	-7%
	Quintile 3	-3%	8%	8%	9%	4%	4%	5%	3%	0%	-8%
	Quintile 4	15%	16%	14%	7%	8%	9%	10%	8%	0%	-3%
	Quintile 5	10%	14%	13%	10%	11%	7%	7%	5%	0%	-4%

Note: The percentage change is not recorded in the above table for groups with fewer than 10 applicants in that cycle or in the 2017 cycle.

I.11.29 18 year old applicants by POLAR3 quintile: Wales
Difference between cycle and 2017 cycle

- Quintile 1
- Quintile 2
- Quintile 3
- Quintile 4
- Quintile 5



Note: The percentage change is not plotted in the above chart for groups with fewer than 500 applicants in any one cycle.

I.11.30 18 year old applicants by POLAR3 quintile: Wales

POLAR3 quintile of applicant		2009	2010	2011	2012	2013	2014	2015	2016	2017	2018
Wales	Quintile 1	1,480	1,590	1,580	1,580	1,510	1,740	1,760	1,840	1,730	1,660
	Quintile 2	2,460	2,410	2,350	2,350	2,300	2,310	2,470	2,530	2,360	2,320
	Quintile 3	2,090	2,070	1,990	1,980	1,880	2,010	2,010	1,990	2,020	1,920
	Quintile 4	2,710	2,740	2,650	2,500	2,430	2,490	2,690	2,490	2,520	2,520
	Quintile 5	3,180	3,130	3,050	2,990	2,990	2,980	2,990	3,090	2,910	2,810

I.11.31 18 year old applicants by POLAR3 quintile: Wales

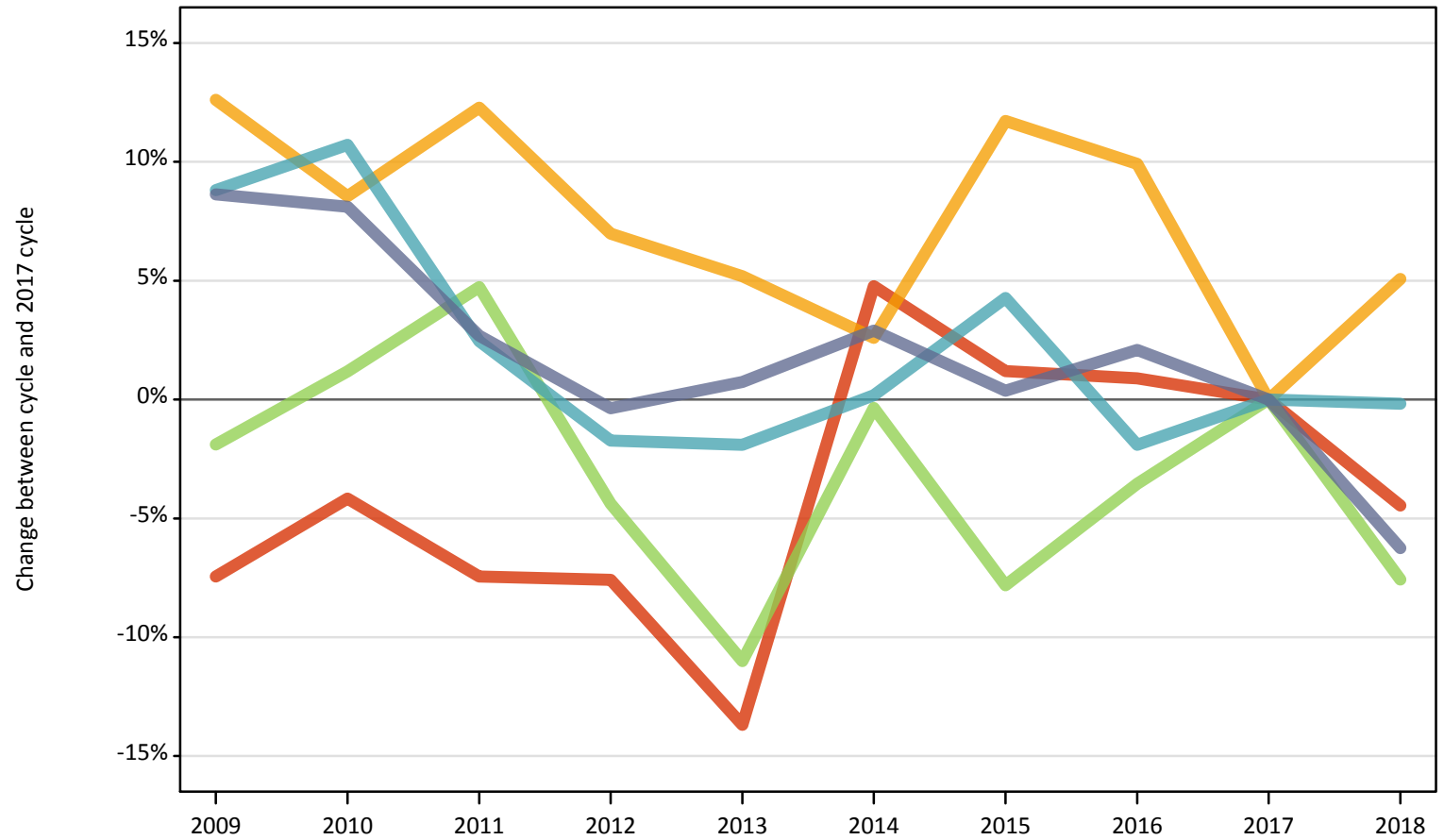
Difference between cycle and 2017 cycle

POLAR3 quintile of applicant		2009	2010	2011	2012	2013	2014	2015	2016	2017	2018
Wales	Quintile 1	-15%	-8%	-9%	-8%	-12%	1%	2%	6%	0%	-4%
	Quintile 2	4%	2%	-0%	-0%	-2%	-2%	5%	7%	0%	-2%
	Quintile 3	3%	2%	-2%	-2%	-7%	-1%	-0%	-1%	0%	-5%
	Quintile 4	8%	9%	5%	-1%	-4%	-1%	7%	-1%	0%	0%
	Quintile 5	9%	8%	5%	3%	3%	2%	3%	6%	0%	-3%

Note: The percentage change is not recorded in the above table for groups with fewer than 10 applicants in that cycle or in the 2017 cycle.

I.11.32 18 year old applicants by POLAR3 quintile: Wales (Men)
Difference between cycle and 2017 cycle

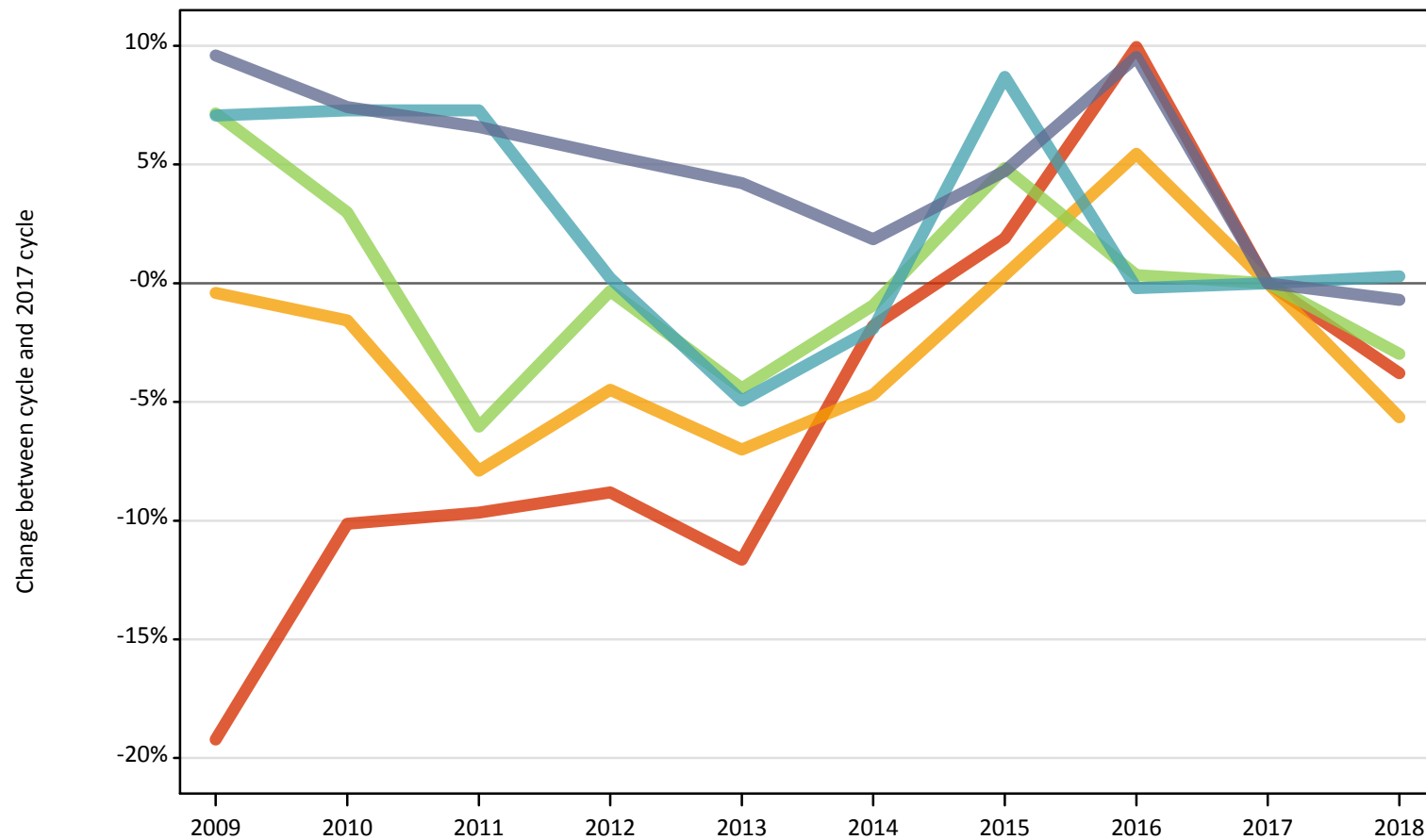
- Quintile 1
- Quintile 2
- Quintile 3
- Quintile 4
- Quintile 5



Note: The percentage change is not plotted in the above chart for groups with fewer than 500 applicants in any one cycle.

I.11.33 18 year old applicants by POLAR3 quintile: Wales (Women)
Difference between cycle and 2017 cycle

- Quintile 1
- Quintile 2
- Quintile 3
- Quintile 4
- Quintile 5



Note: The percentage change is not plotted in the above chart for groups with fewer than 500 applicants in any one cycle.

I.11.34 18 year old applicants by sex and POLAR3 quintile: Wales

Sex and POLAR3 quintile of applicant		2009	2010	2011	2012	2013	2014	2015	2016	2017	2018
Women	Quintile 1	850	950	950	960	930	1,040	1,080	1,160	1,060	1,020
	Quintile 2	1,460	1,450	1,350	1,400	1,370	1,400	1,470	1,550	1,470	1,390
	Quintile 3	1,260	1,210	1,100	1,170	1,120	1,160	1,230	1,180	1,180	1,140
	Quintile 4	1,520	1,520	1,520	1,420	1,350	1,390	1,540	1,410	1,420	1,420
	Quintile 5	1,720	1,680	1,670	1,650	1,630	1,590	1,640	1,710	1,570	1,550
Men	Quintile 1	620	640	620	620	580	700	680	680	670	640
	Quintile 2	1,000	960	1,000	950	930	910	990	980	890	930
	Quintile 3	830	860	890	810	750	840	780	820	850	780
	Quintile 4	1,200	1,220	1,130	1,080	1,080	1,100	1,150	1,080	1,100	1,100
	Quintile 5	1,460	1,450	1,380	1,340	1,350	1,380	1,350	1,370	1,340	1,260

I.11.35 18 year old applicants by sex and POLAR3 quintile: Wales

Difference between cycle and 2017 cycle

Sex and POLAR3 quintile of applicant		2009	2010	2011	2012	2013	2014	2015	2016	2017	2018
Women	Quintile 1	-19%	-10%	-10%	-9%	-12%	-2%	2%	10%	0%	-4%
	Quintile 2	-0%	-2%	-8%	-4%	-7%	-5%	0%	5%	0%	-6%
	Quintile 3	7%	3%	-6%	-0%	-4%	-1%	5%	0%	0%	-3%
	Quintile 4	7%	7%	7%	0%	-5%	-2%	9%	-0%	0%	0%
	Quintile 5	10%	7%	7%	5%	4%	2%	5%	10%	0%	-1%
Men	Quintile 1	-7%	-4%	-7%	-8%	-14%	5%	1%	1%	0%	-4%
	Quintile 2	13%	9%	12%	7%	5%	3%	12%	10%	0%	5%
	Quintile 3	-2%	1%	5%	-4%	-11%	-0%	-8%	-4%	0%	-8%
	Quintile 4	9%	11%	2%	-2%	-2%	0%	4%	-2%	0%	-0%
	Quintile 5	9%	8%	3%	-0%	1%	3%	0%	2%	0%	-6%

Note: The percentage change is not recorded in the above table for groups with fewer than 10 applicants in that cycle or in the 2017 cycle.

I.11.36 Technical notes and definitions

Applicants have been able to submit applications for all 2018 courses since early September.

Applicants who submit their applications to UCAS by the January deadline are considered 'on time' applicants for the large majority of courses offered through UCAS. Some art and design courses have a later deadline of 24 March. By definition all main scheme applications have been received by the 30 June deadline.

Counts of the number of applicants reported have been rounded to the nearest 10 applicants, this may result in instances where totals do not equal the sum of the components. Proportional changes have been rounded to the nearest whole percentage point.

Age

This statistical release uses country-specific age definitions which align with the cut off points for school/college cohorts within the different administrations of the UK. For England and Wales ages are defined on the 31 August, for Northern Ireland on the 1 July and for Scotland on the 28 February the following year. Defining ages in this way matches the assignment of children to school cohorts. For applicants outside of the UK the cohort cut off for England and Wales has been used.

Applicant

A person who has made an application in the UCAS system during the cycle reported (including applications for deferred entry). Records of prior acceptance (RPAs) are excluded.

Application

An application to a course at a provider made by an applicant in the UCAS main scheme. Applicants may make up to five main scheme applications.

Country of provider

An applicant may be counted once for each provider country they have applied to in the main scheme. If an applicant has applied to providers in multiple countries then the applicant is counted once within each country of provider applied to.

Domicile

Declared area of permanent residence. The Channel Islands and the Isle of Man have been assigned as 'Not EU'.

Ethnic group

High level grouping of ethnic origin as declared by the applicant: 'Asian', 'Black', 'Mixed', 'White', 'Other', 'Unknown'.

First time applicant

An applicant that did not apply to the UCAS scheme in the previous cycle.

Main scheme

The main UCAS application scheme through which up to five providers/courses can be applied to. This opens in September and closes to new applications on 30 June the following year.

Reapplicant

An applicant that applied to the UCAS scheme in the previous cycle.

Sex

As declared by the applicant.

SIMD 2016

Scottish Index of Multiple Deprivation identifies small area concentrations of multiple deprivation across all of Scotland, providing a relative measure of deprivation among small areas (data zones). In this report, the SIMD 2016 has been used to group areas in each year in the times series.

POLAR3

Developed by HEFCE and classifies small areas across the UK into five groups, according to their level of young participation in HE. Each of these groups represents around 20 per cent of young people, and is ranked from quintile 1 (areas with the lowest young participation rates, considered as the most disadvantaged) to quintile 5 (highest young participation rates, considered most advantaged).

POLAR4

Developed by HEFCE and classifies small areas across the UK into five groups, according to their level of young participation in HE. Each of these groups represents around 20 per cent of young people, and is ranked from quintile 1 (areas with the lowest young participation rates, considered as the most disadvantaged) to quintile 5 (highest young participation rates, considered most advantaged). POLAR4 is the most recent version of the POLAR classification, and is available for the first time in UCAS? reporting since its launch in 2017.

Tariff Group of provider

Providers are grouped as higher, medium or lower tariff based on their average levels of attainment of their accepted applicants (summarised through UCAS Tariff points) in recent cycles. Each group of providers accounted for around a third of all UK 18 year old acceptances in recent cycles.

Subject group

The JACS3 classification used to classify courses into subject groups.