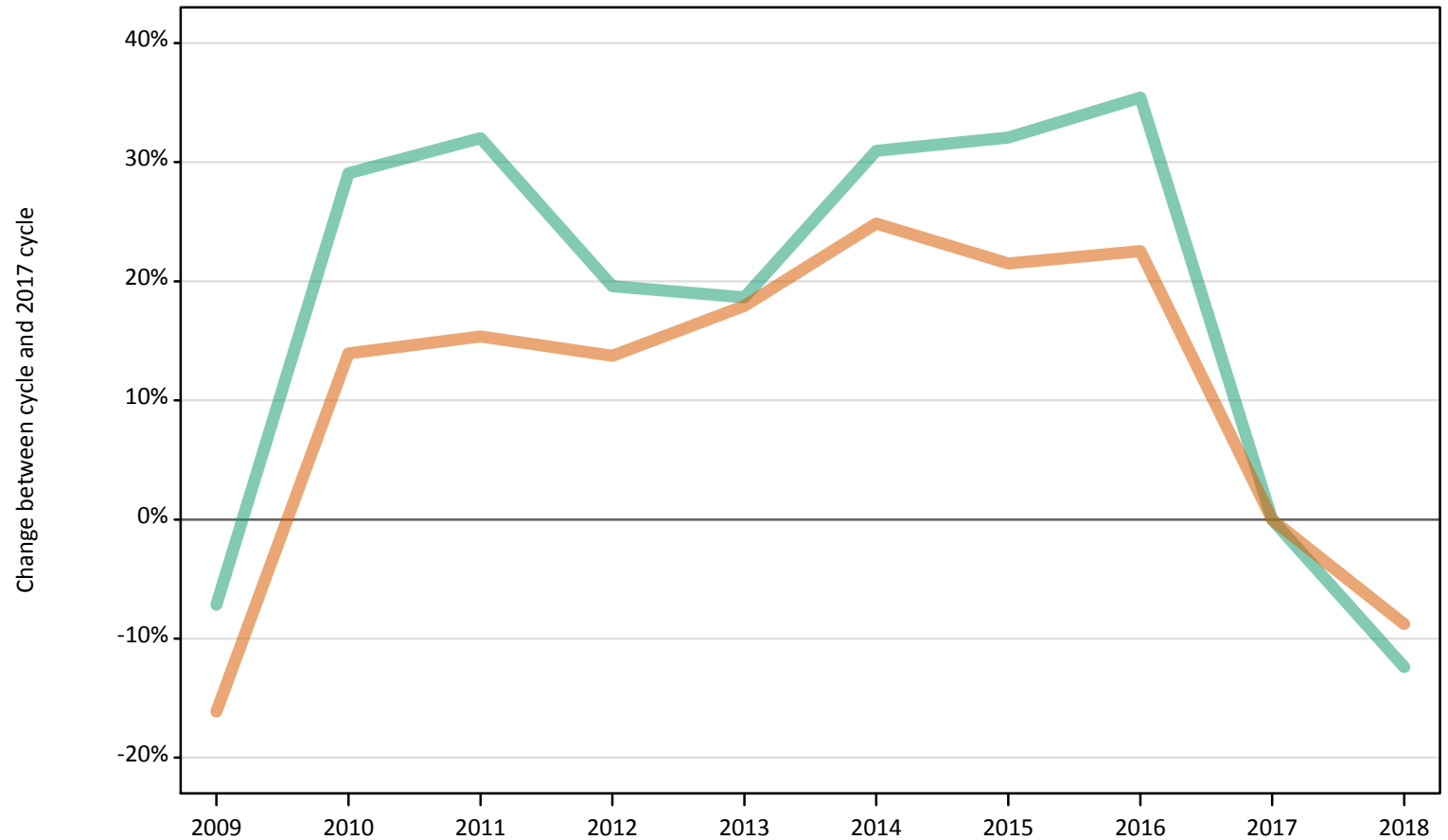


June Deadline Analysis: Sex and age

Nursing applicants by sex and age at the 30 June deadline

IB.2.1 Nursing applicants by sex: All domiciles Difference between cycle and 2017 cycle

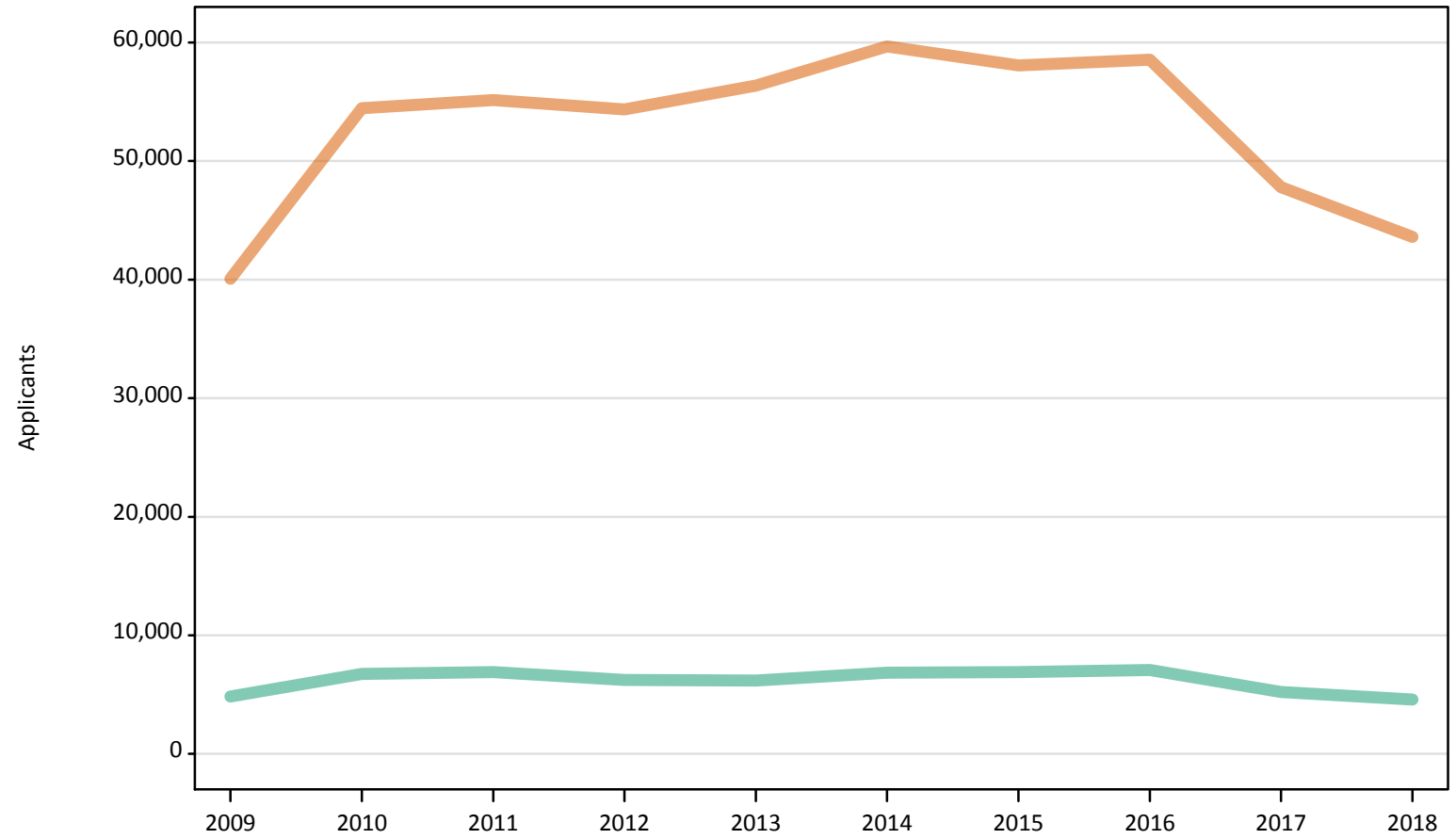
Men
Women



Note: The percentage change is not plotted in the above chart for groups with fewer than 500 applicants in any one cycle.

IB.2.2 Nursing applicants by sex: All domiciles

Men
Women



IB.2.3 Nursing applicants by age and sex: All domiciles

Age group and sex		2009	2010	2011	2012	2013	2014	2015	2016	2017	2018
Under 18	Women	350	450	270	140	150	160	130	140	130	110
	Men	30	40	10	10	10	10	20	10	10	10
18	Women	8,510	10,740	10,900	11,480	11,770	11,930	12,340	12,090	11,110	10,790
	Men	430	590	590	550	540	580	570	570	500	550
19	Women	4,500	6,050	6,450	6,060	6,810	7,120	6,770	6,910	5,780	5,340
	Men	340	440	480	430	450	480	490	460	380	360
20-24	Women	10,680	14,660	14,830	14,820	15,470	16,570	15,540	14,790	11,910	10,510
	Men	1,180	1,530	1,570	1,430	1,400	1,560	1,470	1,380	1,020	930
25-29	Women	5,710	8,180	8,370	8,200	8,610	9,320	8,980	9,200	6,860	5,860
	Men	880	1,230	1,170	1,050	1,140	1,170	1,140	1,140	820	690
30-34	Women	3,840	5,390	5,650	5,440	5,580	5,810	5,530	5,860	4,500	4,070
	Men	640	970	1,010	890	880	910	890	970	620	500
35 and over	Women	6,490	8,970	8,650	8,220	7,970	8,740	8,770	9,570	7,510	6,910
	Men	1,360	1,950	2,060	1,880	1,780	2,130	2,320	2,550	1,870	1,540
All ages	Women	40,080	54,440	55,130	54,350	56,350	59,650	58,060	58,550	47,790	43,590
	Men	4,850	6,740	6,890	6,240	6,190	6,840	6,900	7,070	5,220	4,570

IB.2.4 Nursing applicants by age and sex: All domiciles

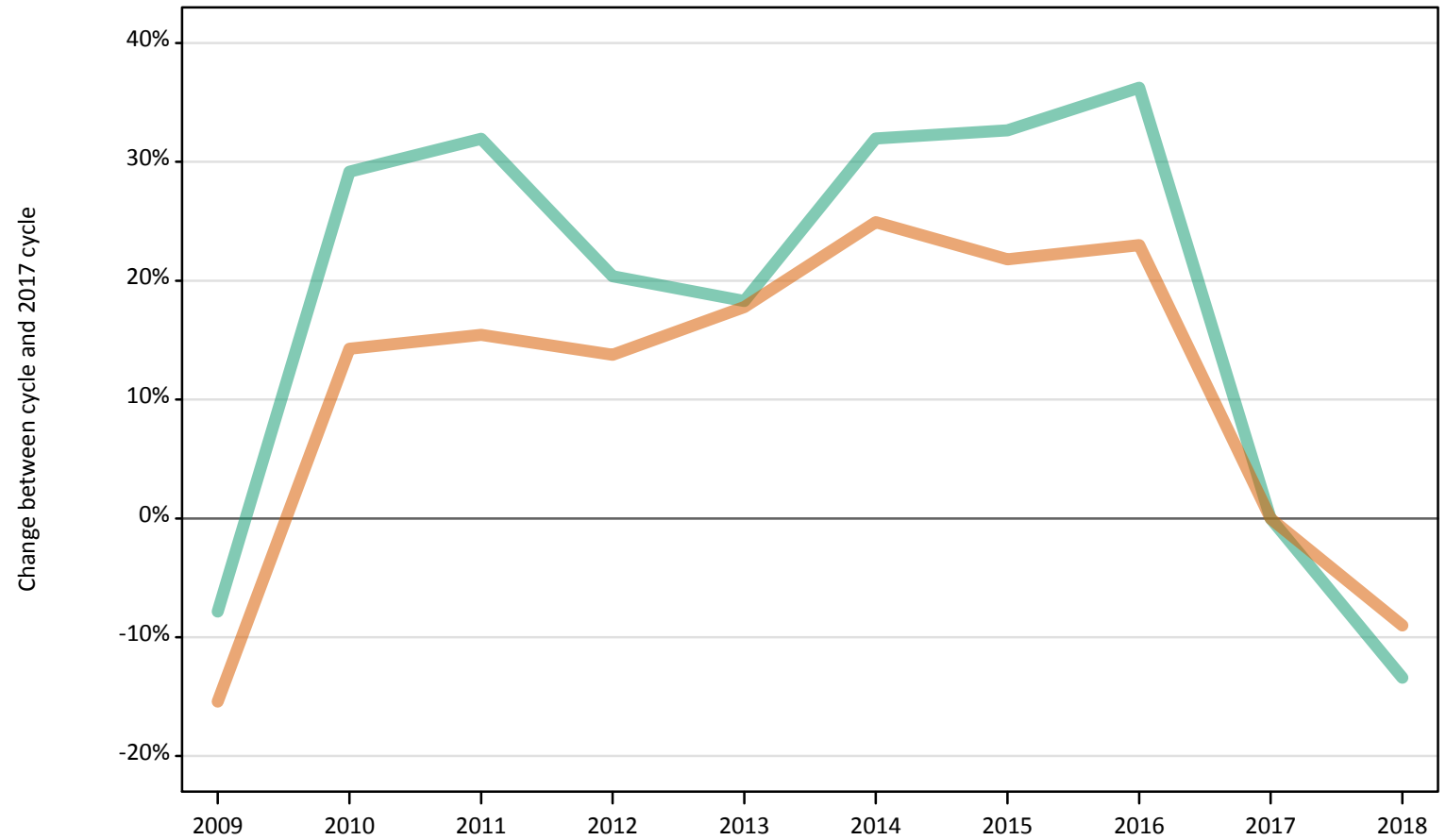
Difference between cycle and 2017 cycle

Age group and sex		2009	2010	2011	2012	2013	2014	2015	2016	2017	2018
Under 18	Women	170%	243%	107%	7%	14%	21%	-2%	3%	0%	-15%
	Men	189%	300%	56%	22%	0%	0%	89%	-33%	0%	-22%
18	Women	-23%	-3%	-2%	3%	6%	7%	11%	9%	0%	-3%
	Men	-15%	18%	18%	9%	7%	15%	13%	14%	0%	10%
19	Women	-22%	5%	12%	5%	18%	23%	17%	20%	0%	-8%
	Men	-10%	15%	24%	12%	19%	25%	29%	20%	0%	-5%
20-24	Women	-10%	23%	25%	24%	30%	39%	31%	24%	0%	-12%
	Men	15%	49%	54%	40%	37%	53%	44%	35%	0%	-9%
25-29	Women	-17%	19%	22%	20%	26%	36%	31%	34%	0%	-14%
	Men	7%	49%	42%	28%	38%	43%	38%	38%	0%	-16%
30-34	Women	-15%	20%	25%	21%	24%	29%	23%	30%	0%	-10%
	Men	3%	57%	64%	45%	42%	48%	45%	57%	0%	-18%
35 and over	Women	-14%	19%	15%	9%	6%	16%	17%	27%	0%	-8%
	Men	-27%	5%	10%	1%	-5%	14%	24%	36%	0%	-18%
All ages	Women	-16%	14%	15%	14%	18%	25%	21%	23%	0%	-9%
	Men	-7%	29%	32%	20%	19%	31%	32%	35%	0%	-12%

Note: The percentage change is not recorded in the above table for groups with fewer than 10 applicants in that cycle or in the 2017 cycle.

IB.2.5 Nursing applicants by sex: UK
Difference between cycle and 2017 cycle

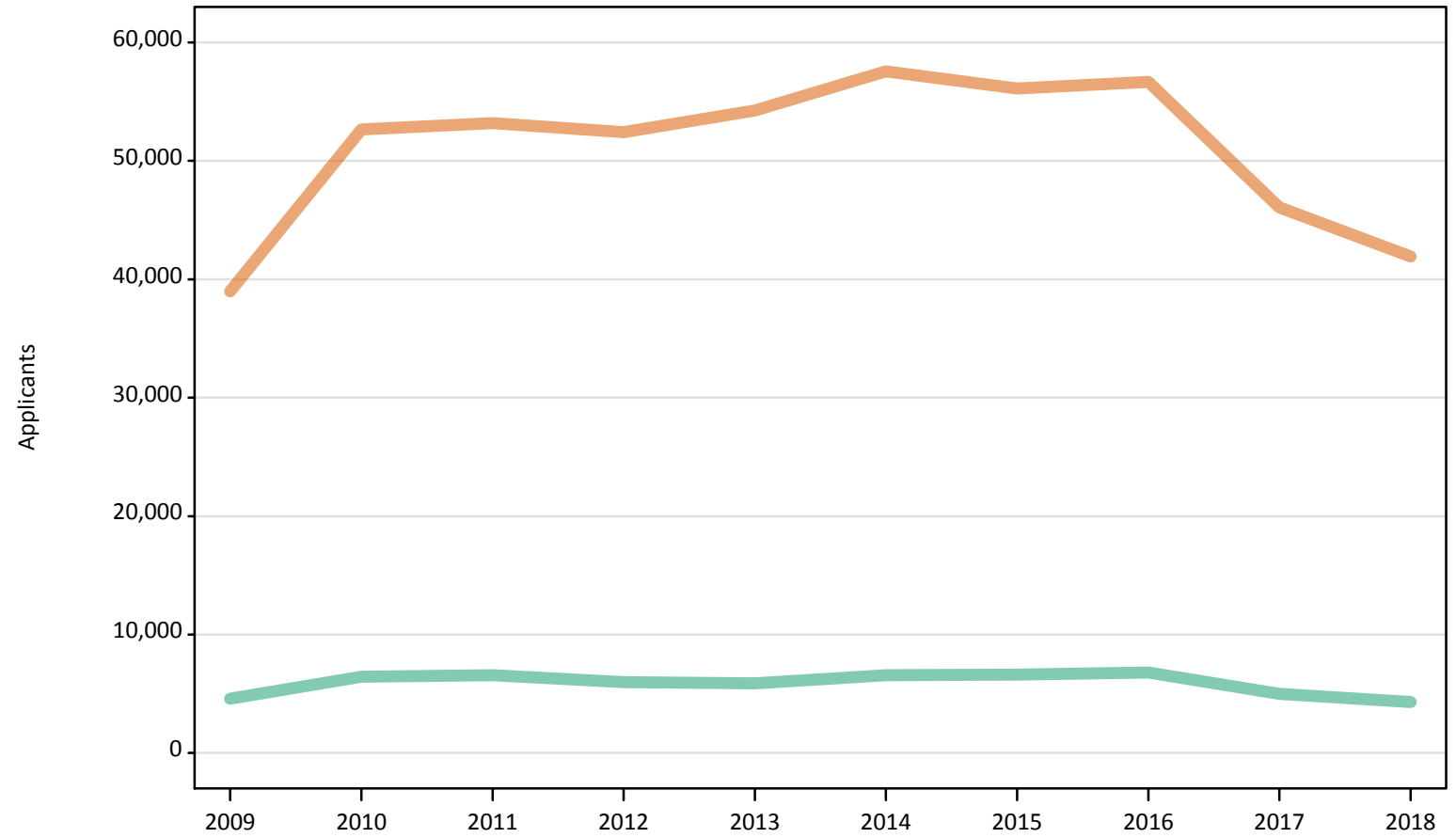
Men
Women



Note: The percentage change is not plotted in the above chart for groups with fewer than 500 applicants in any one cycle.

IB.2.6 Nursing applicants by sex: UK

Men
Women



IB.2.7 Nursing applicants by age and sex: UK

Age group and sex		2009	2010	2011	2012	2013	2014	2015	2016	2017	2018
Under 18	Women	320	370	180	60	60	70	60	60	60	50
	Men	30	40	10	10	0	0	10	0	0	10
18	Women	8,300	10,390	10,530	11,060	11,300	11,520	11,960	11,670	10,770	10,460
	Men	420	570	570	520	500	550	540	530	470	520
19	Women	4,330	5,670	6,080	5,670	6,390	6,680	6,360	6,500	5,420	4,980
	Men	320	410	440	410	420	440	450	420	350	330
20-24	Women	10,300	14,110	14,220	14,210	14,800	15,890	14,920	14,210	11,350	9,990
	Men	1,100	1,430	1,470	1,350	1,310	1,480	1,380	1,310	950	860
25-29	Women	5,560	7,960	8,090	7,970	8,350	9,070	8,720	8,990	6,680	5,690
	Men	810	1,160	1,100	1,010	1,080	1,130	1,100	1,100	790	650
30-34	Women	3,740	5,270	5,550	5,340	5,480	5,720	5,440	5,780	4,400	3,950
	Men	600	920	960	860	850	890	860	940	590	460
35 and over	Women	6,410	8,880	8,540	8,110	7,880	8,620	8,660	9,460	7,400	6,810
	Men	1,320	1,910	2,020	1,850	1,740	2,090	2,270	2,490	1,830	1,490
All ages	Women	38,970	52,640	53,190	52,420	54,260	57,550	56,110	56,660	46,070	41,920
	Men	4,590	6,440	6,570	6,000	5,890	6,570	6,610	6,790	4,980	4,310

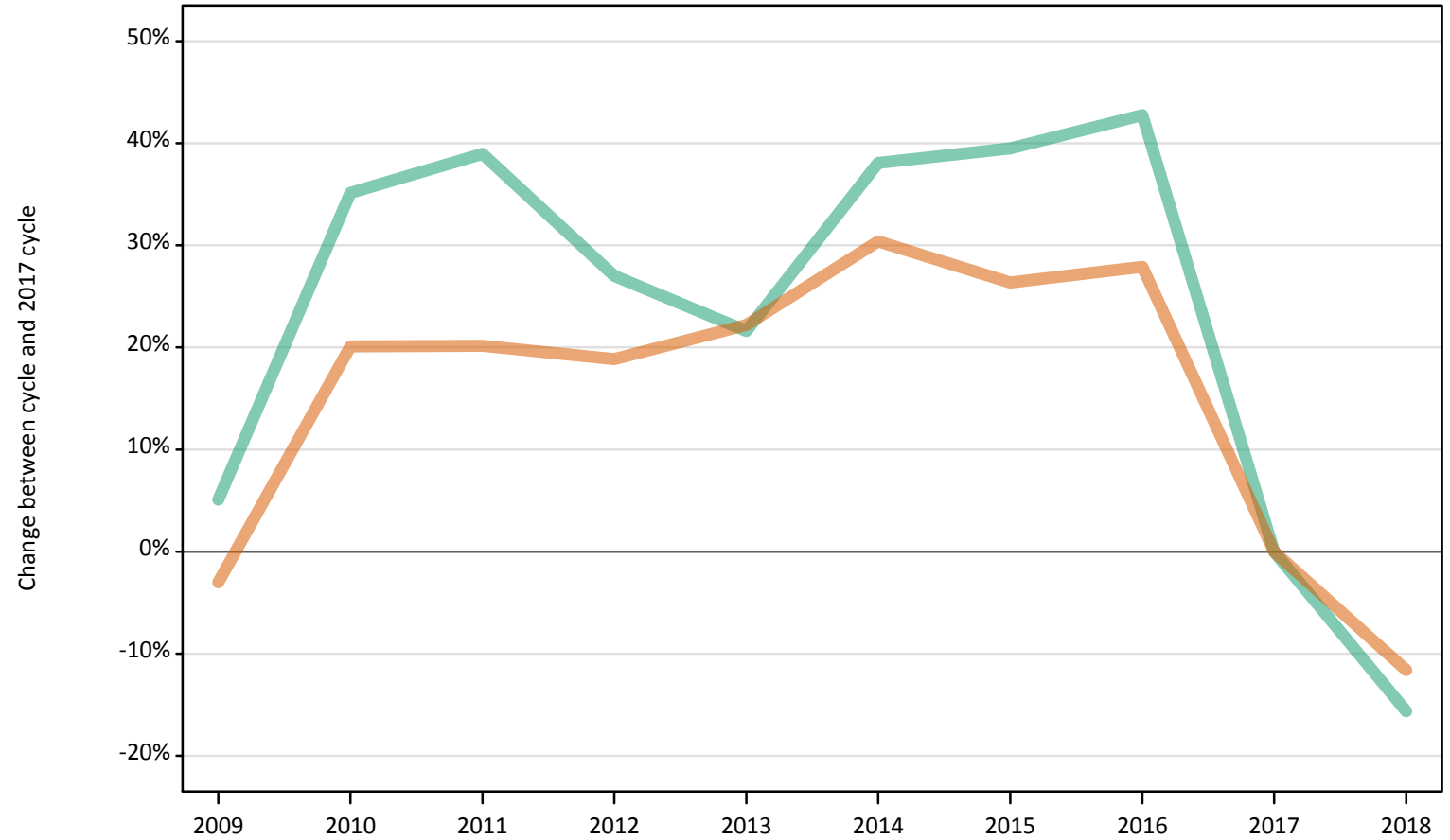
IB.2.8 Nursing applicants by age and sex: UK
Difference between cycle and 2017 cycle

Age group and sex		2009	2010	2011	2012	2013	2014	2015	2016	2017	2018
Under 18	Women	395%	470%	183%	-8%	-3%	6%	-6%	-2%	0%	-23%
	Men										
18	Women	-23%	-4%	-2%	3%	5%	7%	11%	8%	0%	-3%
	Men	-11%	21%	22%	10%	6%	16%	15%	13%	0%	10%
19	Women	-20%	5%	12%	5%	18%	23%	17%	20%	0%	-8%
	Men	-7%	16%	26%	16%	20%	27%	30%	20%	0%	-5%
20-24	Women	-9%	24%	25%	25%	30%	40%	31%	25%	0%	-12%
	Men	15%	50%	54%	42%	37%	55%	45%	37%	0%	-9%
25-29	Women	-17%	19%	21%	19%	25%	36%	31%	35%	0%	-15%
	Men	2%	47%	40%	28%	37%	43%	39%	40%	0%	-18%
30-34	Women	-15%	20%	26%	21%	24%	30%	24%	31%	0%	-10%
	Men	2%	58%	64%	47%	45%	51%	47%	60%	0%	-21%
35 and over	Women	-13%	20%	15%	10%	7%	17%	17%	28%	0%	-8%
	Men	-28%	4%	10%	1%	-5%	14%	24%	36%	0%	-19%
All ages	Women	-15%	14%	15%	14%	18%	25%	22%	23%	0%	-9%
	Men	-8%	29%	32%	20%	18%	32%	33%	36%	0%	-13%

Note: The percentage change is not recorded in the above table for groups with fewer than 10 applicants in that cycle or in the 2017 cycle.

IB.2.9 Nursing applicants by sex: England
Difference between cycle and 2017 cycle

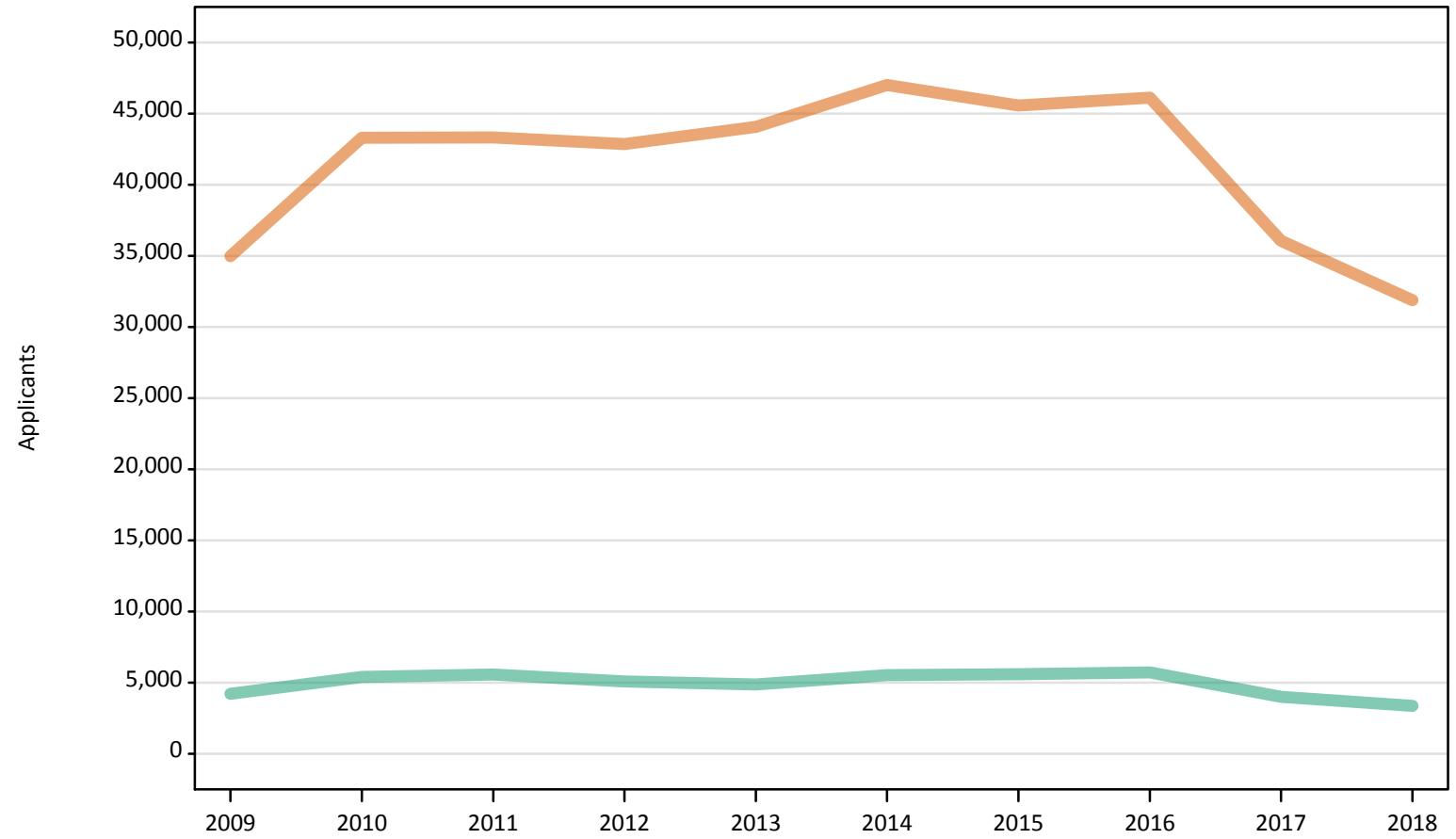
Men
Women



Note: The percentage change is not plotted in the above chart for groups with fewer than 500 applicants in any one cycle.

IB.2.10 Nursing applicants by sex: England

Men
Women



IB.2.11 Nursing applicants by age and sex: England

Age group and sex		2009	2010	2011	2012	2013	2014	2015	2016	2017	2018
Under 18	Women	310	260	120	20	20	20	20	10	10	10
	Men	30	30	10	0	0	0	0	0	0	0
18	Women	6,810	7,850	7,950	8,430	8,680	8,920	9,240	9,080	8,210	7,970
	Men	340	430	430	390	340	390	390	380	330	380
19	Women	3,890	4,610	4,930	4,530	5,170	5,470	5,210	5,270	4,280	3,850
	Men	280	340	370	330	330	350	380	310	270	250
20-24	Women	9,340	11,760	11,550	11,670	11,960	12,970	12,080	11,450	8,870	7,550
	Men	1,000	1,190	1,200	1,110	1,050	1,200	1,130	1,060	710	640
25-29	Women	5,110	6,660	6,700	6,600	6,840	7,370	7,030	7,330	5,110	4,160
	Men	740	950	910	830	860	930	900	890	590	460
30-34	Women	3,460	4,510	4,700	4,590	4,610	4,800	4,520	4,770	3,400	2,940
	Men	570	800	830	750	730	750	740	800	470	350
35 and over	Women	6,060	7,660	7,370	7,020	6,780	7,470	7,470	8,190	6,170	5,400
	Men	1,260	1,690	1,830	1,690	1,570	1,910	2,060	2,280	1,640	1,300
All ages	Women	34,980	43,310	43,320	42,850	44,060	47,020	45,560	46,110	36,060	31,880
	Men	4,210	5,420	5,570	5,090	4,880	5,540	5,590	5,720	4,010	3,380

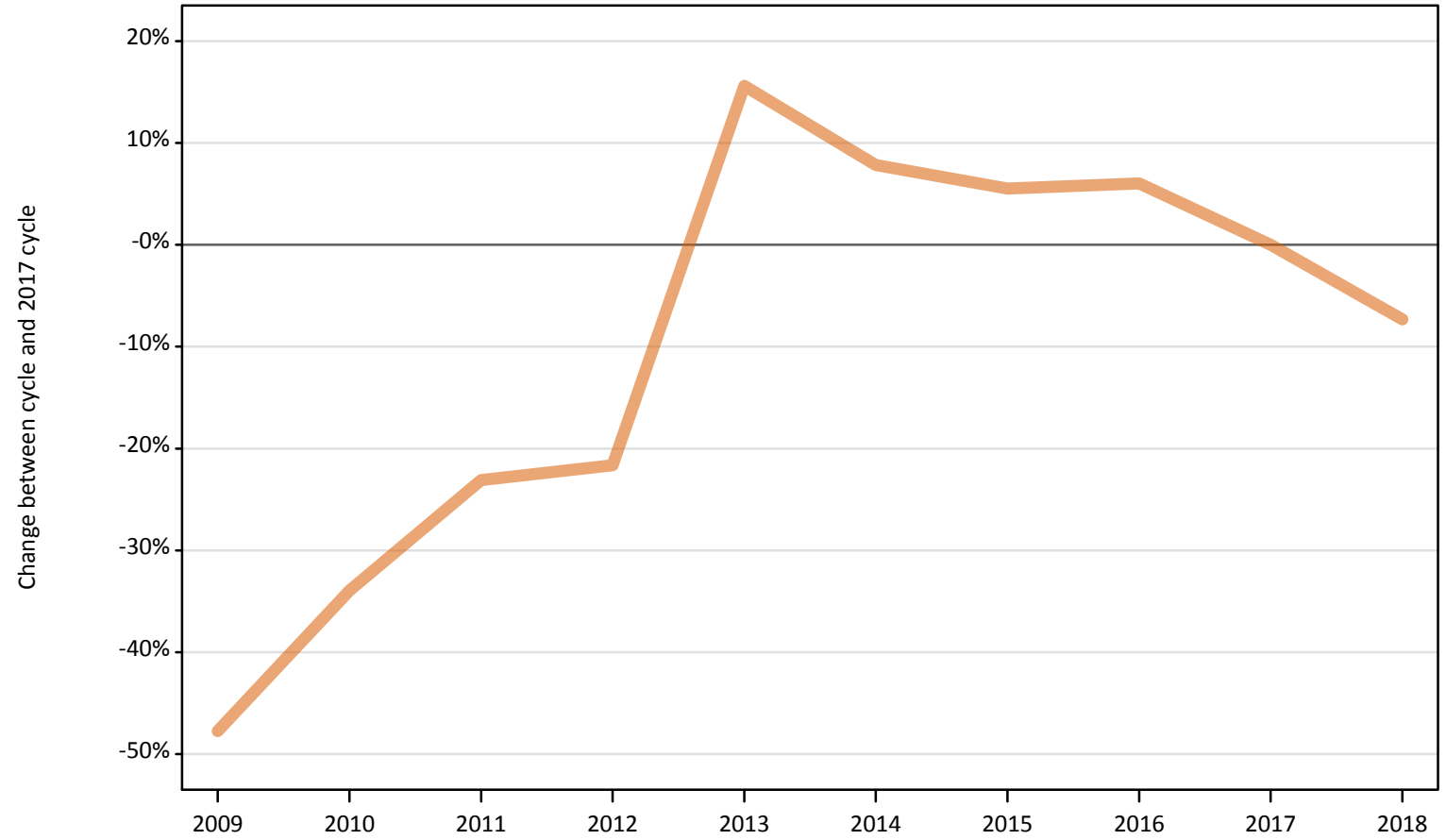
IB.2.12 Nursing applicants by age and sex: England
 Difference between cycle and 2017 cycle

Age group and sex		2009	2010	2011	2012	2013	2014	2015	2016	2017	2018
Under 18	Women	2254%	1892%	823%	23%	46%	31%	23%	8%	0%	0%
	Men										
18	Women	-17%	-4%	-3%	3%	6%	9%	13%	11%	0%	-3%
	Men	6%	31%	32%	19%	4%	19%	19%	18%	0%	18%
19	Women	-9%	8%	15%	6%	21%	28%	22%	23%	0%	-10%
	Men	4%	23%	35%	22%	19%	29%	41%	15%	0%	-10%
20-24	Women	5%	33%	30%	31%	35%	46%	36%	29%	0%	-15%
	Men	40%	66%	68%	55%	47%	69%	58%	49%	0%	-10%
25-29	Women	-0%	30%	31%	29%	34%	44%	38%	44%	0%	-19%
	Men	26%	62%	55%	41%	47%	58%	52%	52%	0%	-21%
30-34	Women	2%	33%	38%	35%	36%	41%	33%	40%	0%	-13%
	Men	21%	69%	77%	59%	55%	60%	57%	69%	0%	-27%
35 and over	Women	-2%	24%	20%	14%	10%	21%	21%	33%	0%	-13%
	Men	-23%	3%	11%	3%	-4%	17%	26%	39%	0%	-21%
All ages	Women	-3%	20%	20%	19%	22%	30%	26%	28%	0%	-12%
	Men	5%	35%	39%	27%	22%	38%	39%	43%	0%	-16%

Note: The percentage change is not recorded in the above table for groups with fewer than 10 applicants in that cycle or in the 2017 cycle.

IB.2.13 Nursing applicants by sex: Northern Ireland
Difference between cycle and 2017 cycle

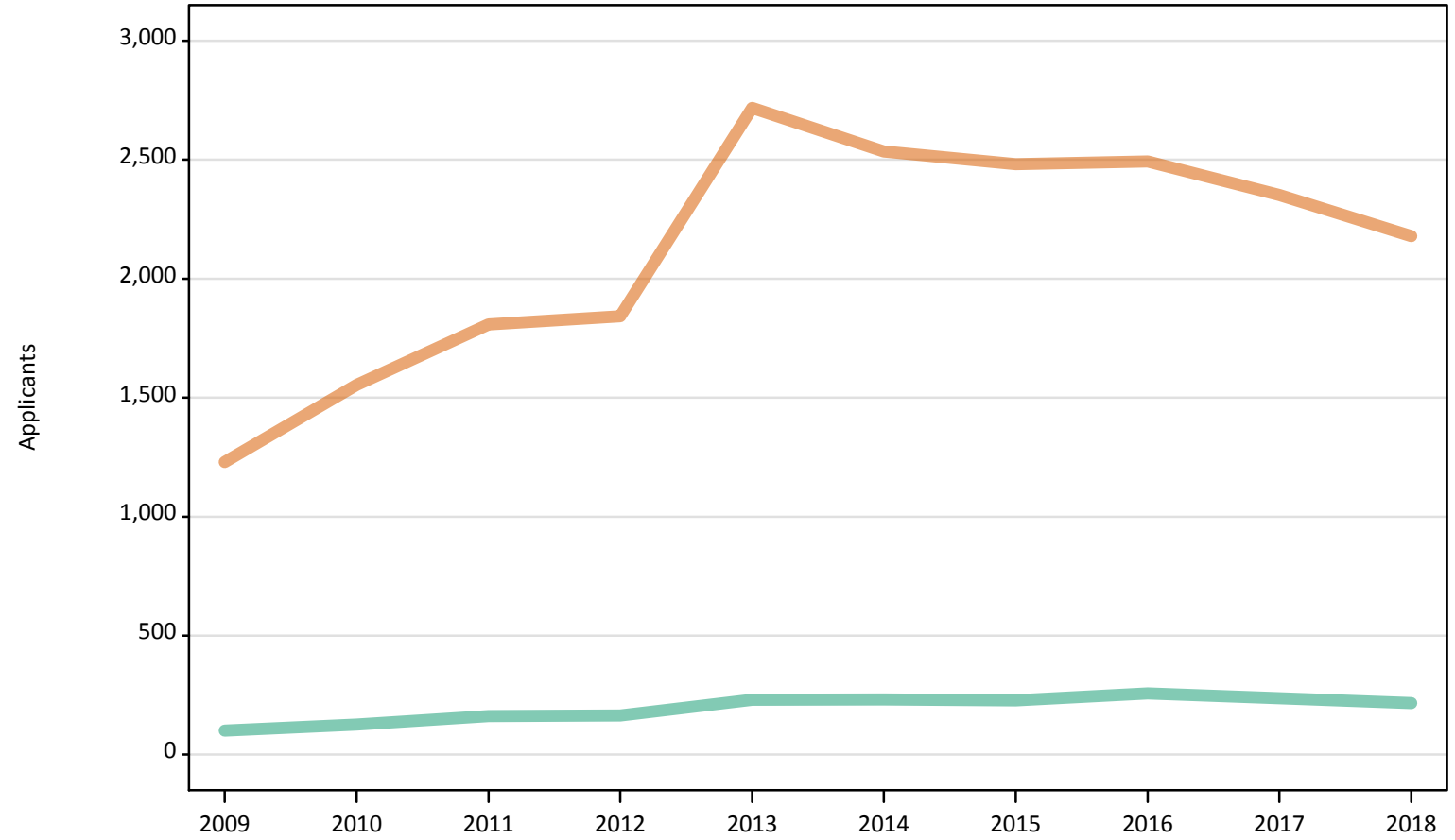
Men
Women



Note: The percentage change is not plotted in the above chart for groups with fewer than 500 applicants in any one cycle.

IB.2.14 Nursing applicants by sex: Northern Ireland

Men
Women



IB.2.15 Nursing applicants by age and sex: Northern Ireland

Age group and sex		2009	2010	2011	2012	2013	2014	2015	2016	2017	2018
Under 18	Women	0	0	0	0	0	0	0	0	0	0
	Men	0	0	0	0	0	0	0	0	0	0
18	Women	710	770	840	890	930	830	850	840	830	820
	Men	40	20	50	50	60	60	50	50	70	70
19	Women	150	200	270	280	400	370	330	370	360	320
	Men	10	10	10	30	30	30	30	40	40	40
20-24	Women	220	330	420	420	750	700	680	640	600	530
	Men	20	40	50	40	50	70	50	60	60	50
25-29	Women	90	130	150	140	300	320	310	300	240	230
	Men	10	20	20	20	40	40	40	50	40	30
30-34	Women	30	50	60	60	160	170	160	170	150	130
	Men	10	10	20	10	20	20	20	20	20	20
35 and over	Women	30	70	70	60	170	140	160	170	170	150
	Men	20	20	10	10	20	20	30	30	20	10
All ages	Women	1,230	1,550	1,810	1,840	2,720	2,540	2,480	2,490	2,350	2,180
	Men	100	130	160	170	230	230	230	260	240	220

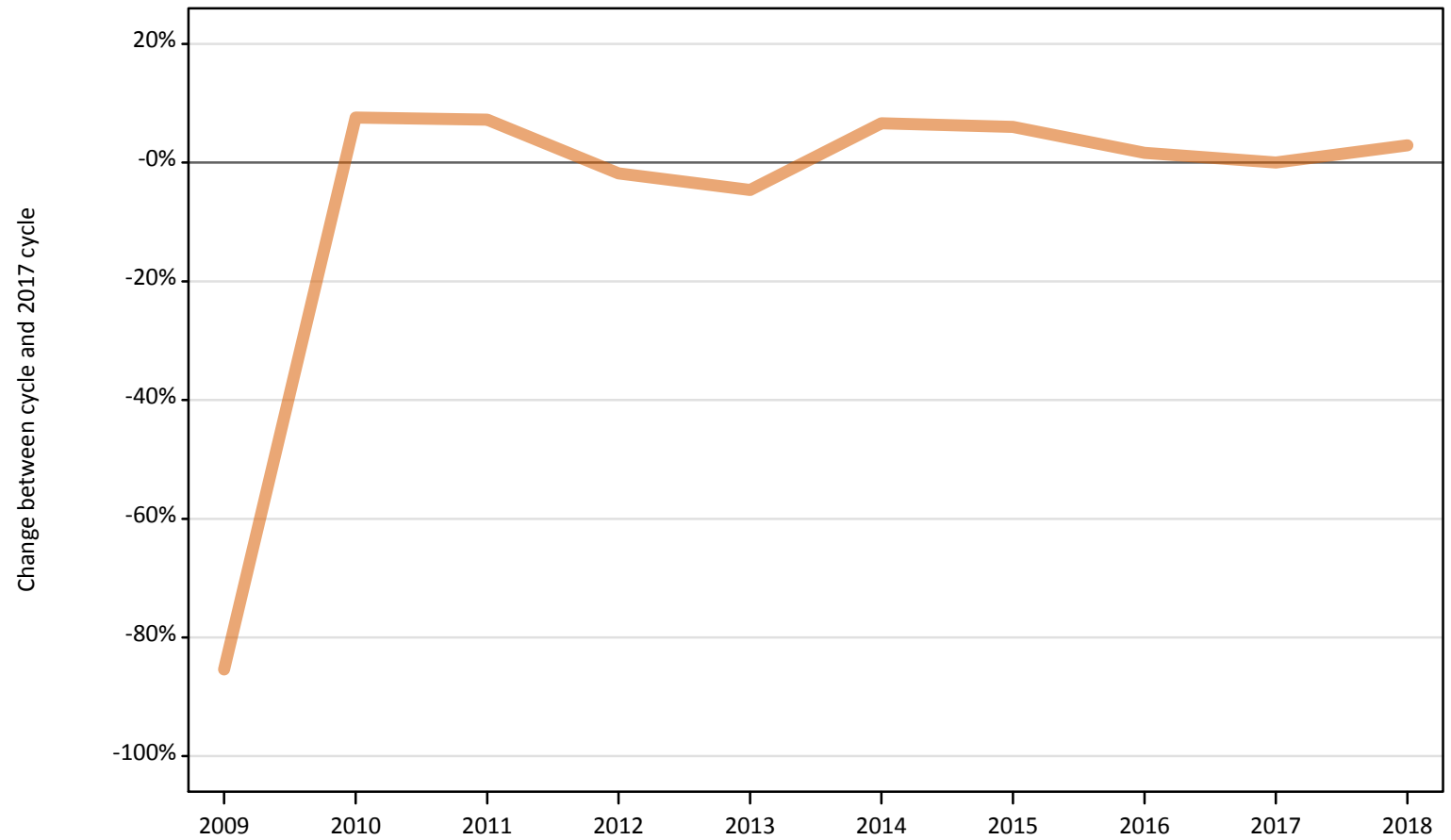
IB.2.16 Nursing applicants by age and sex: Northern Ireland
Difference between cycle and 2017 cycle

Age group and sex		2009	2010	2011	2012	2013	2014	2015	2016	2017	2018
Under 18	Women										
	Men										
18	Women	-15%	-7%	2%	8%	13%	0%	3%	1%	0%	-0%
	Men	-49%	-68%	-24%	-34%	-10%	-12%	-21%	-25%	0%	4%
19	Women	-57%	-44%	-26%	-23%	13%	3%	-7%	4%	0%	-11%
	Men	-83%	-66%	-63%	-14%	-11%	-17%	-9%	20%	0%	3%
20-24	Women	-64%	-45%	-30%	-30%	25%	17%	13%	8%	0%	-12%
	Men	-61%	-40%	-27%	-37%	-15%	6%	-15%	2%	0%	-18%
25-29	Women	-64%	-47%	-40%	-43%	22%	33%	25%	24%	0%	-6%
	Men	-63%	-40%	-37%	-34%	26%	11%	0%	31%	0%	-20%
30-34	Women	-77%	-68%	-61%	-62%	8%	13%	5%	11%	0%	-14%
	Men	-67%	-48%	-19%	-33%	-5%	-24%	5%	10%	0%	-19%
35 and over	Women	-84%	-58%	-57%	-67%	1%	-16%	-8%	1%	0%	-10%
	Men	-6%	29%	-24%	-24%	24%	24%	88%	88%	0%	-18%
All ages	Women	-48%	-34%	-23%	-22%	16%	8%	6%	6%	0%	-7%
	Men	-58%	-47%	-32%	-31%	-3%	-3%	-4%	8%	0%	-9%

Note: The percentage change is not recorded in the above table for groups with fewer than 10 applicants in that cycle or in the 2017 cycle.

IB.2.17 Nursing applicants by sex: Scotland
Difference between cycle and 2017 cycle

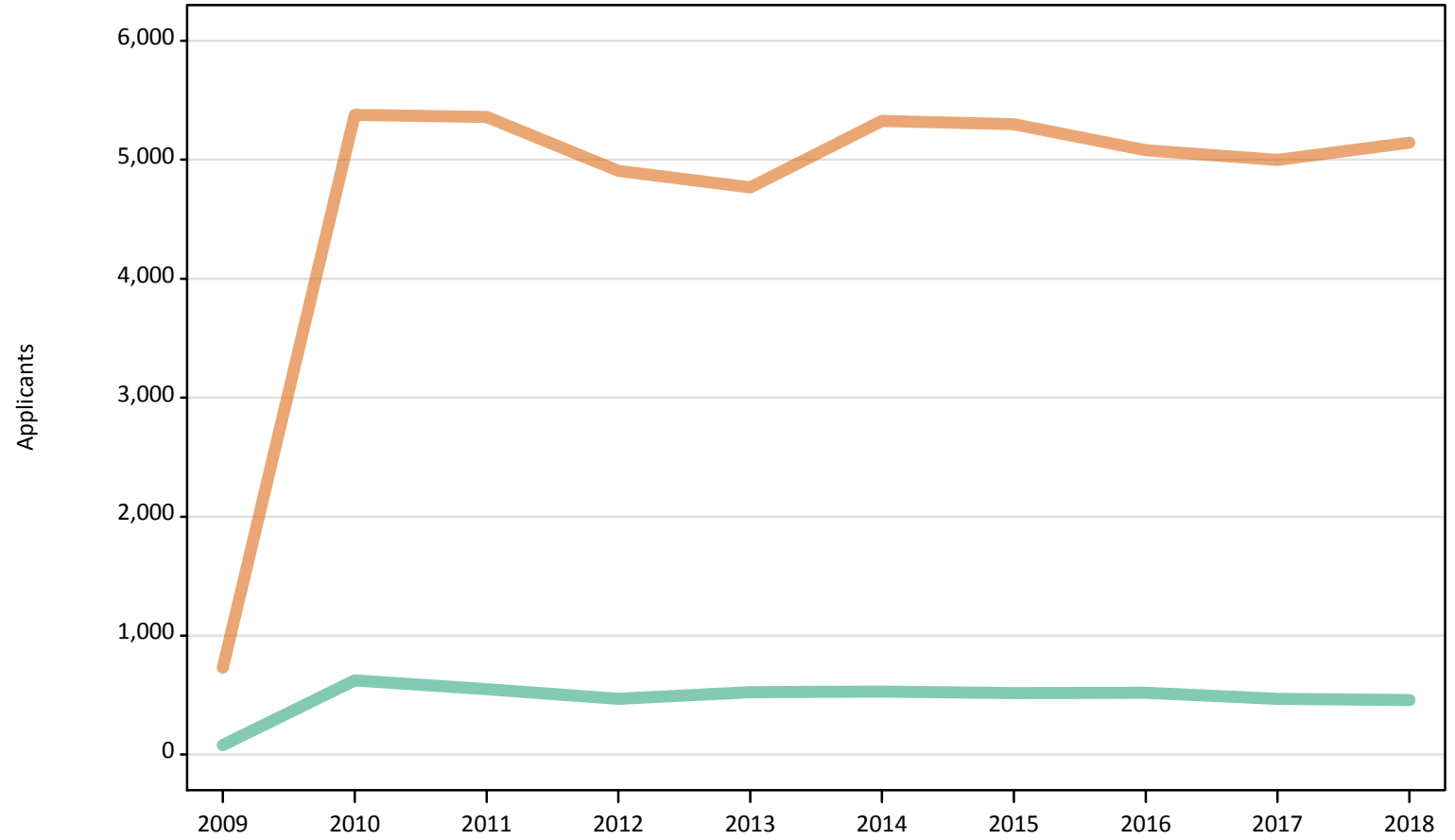
Men
Women



Note: The percentage change is not plotted in the above chart for groups with fewer than 500 applicants in any one cycle.

IB.2.18 Nursing applicants by sex: Scotland

Men
Women



IB.2.19 Nursing applicants by age and sex: Scotland

Age group and sex		2009	2010	2011	2012	2013	2014	2015	2016	2017	2018
Under 18	Women	10	100	60	40	40	50	40	40	50	40
	Men	0	0	0	0	0	0	0	0	0	0
18	Women	310	1,180	1,180	1,170	1,110	1,190	1,220	1,100	1,120	1,080
	Men	10	80	60	60	70	70	70	70	40	40
19	Women	90	590	550	560	520	550	510	520	460	480
	Men	10	40	40	30	50	40	20	40	30	20
20-24	Women	170	1,400	1,500	1,300	1,310	1,470	1,360	1,250	1,190	1,230
	Men	30	140	140	120	120	130	130	120	110	100
25-29	Women	60	790	780	770	740	880	900	870	860	850
	Men	20	130	110	90	110	100	110	100	100	110
30-34	Women	40	480	530	420	430	490	540	540	570	560
	Men	0	90	80	70	70	70	60	80	70	60
35 and over	Women	50	850	750	660	610	700	730	760	760	900
	Men	10	140	120	100	110	120	130	110	120	130
All ages	Women	730	5,380	5,360	4,910	4,770	5,330	5,300	5,080	5,000	5,140
	Men	80	620	550	470	520	530	520	520	470	460

IB.2.20 Nursing applicants by age and sex: Scotland

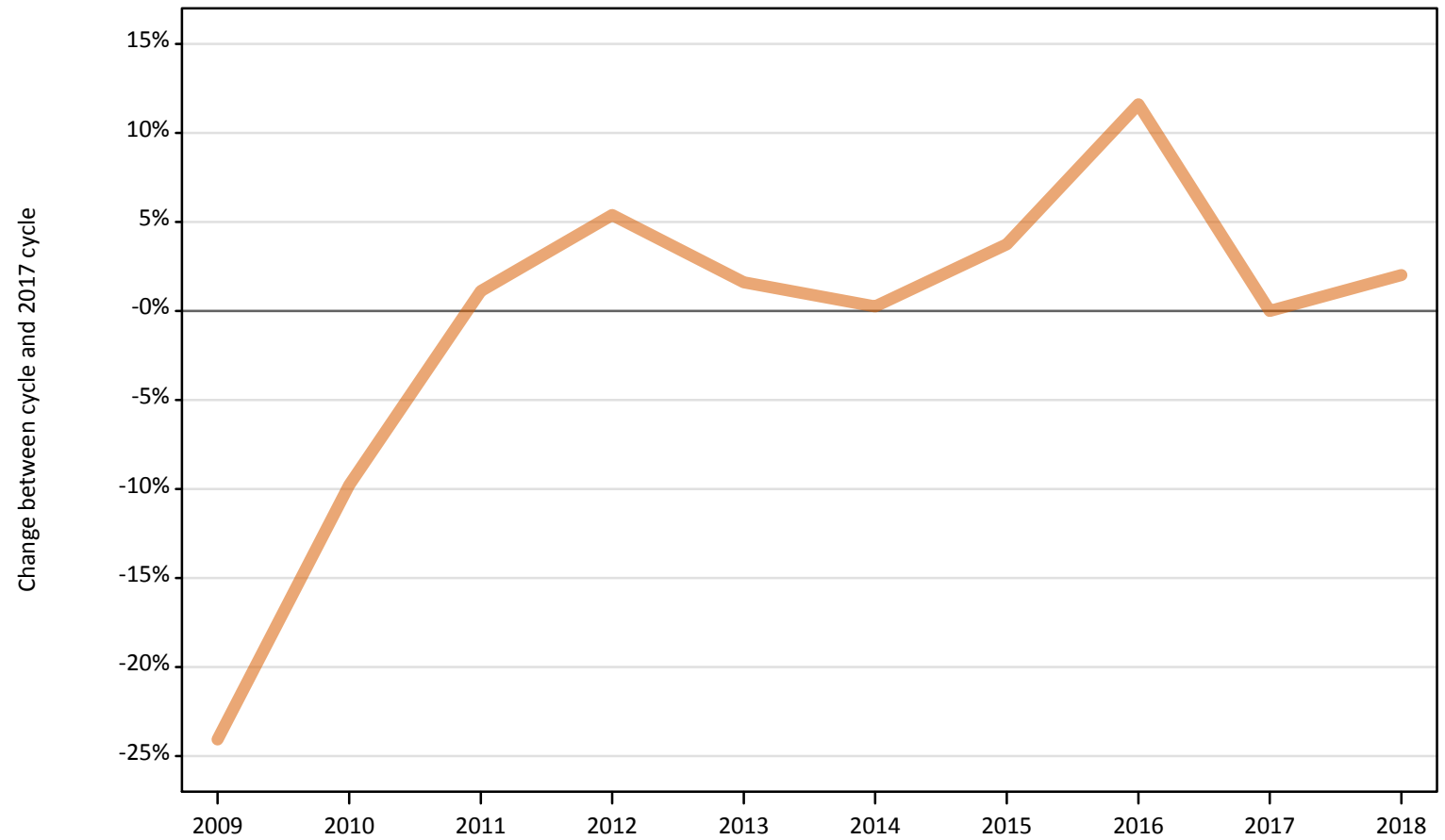
Difference between cycle and 2017 cycle

Age group and sex		2009	2010	2011	2012	2013	2014	2015	2016	2017	2018
Under 18	Women	-83%	102%	26%	-15%	-19%	6%	-13%	-11%	0%	-26%
	Men										
18	Women	-72%	6%	6%	5%	-0%	6%	9%	-2%	0%	-3%
	Men	-76%	95%	52%	48%	74%	69%	62%	67%	0%	-10%
19	Women	-81%	28%	19%	20%	13%	18%	10%	13%	0%	5%
	Men	-44%	60%	40%	4%	80%	68%	-8%	60%	0%	-4%
20-24	Women	-86%	18%	26%	9%	10%	24%	14%	5%	0%	3%
	Men	-75%	26%	21%	4%	8%	14%	17%	4%	0%	-12%
25-29	Women	-93%	-8%	-9%	-11%	-13%	2%	5%	1%	0%	-1%
	Men	-84%	29%	6%	-13%	4%	-4%	3%	0%	0%	3%
30-34	Women	-92%	-16%	-6%	-26%	-24%	-13%	-6%	-5%	0%	-1%
	Men		37%	28%	0%	3%	12%	-6%	22%	0%	-3%
35 and over	Women	-93%	12%	-1%	-13%	-19%	-7%	-4%	-0%	0%	18%
	Men	-94%	13%	2%	-13%	-10%	-3%	5%	-8%	0%	6%
All ages	Women	-85%	8%	7%	-2%	-5%	7%	6%	2%	0%	3%
	Men	-83%	33%	17%	0%	12%	13%	11%	11%	0%	-2%

Note: The percentage change is not recorded in the above table for groups with fewer than 10 applicants in that cycle or in the 2017 cycle.

IB.2.21 Nursing applicants by sex: Wales
Difference between cycle and 2017 cycle

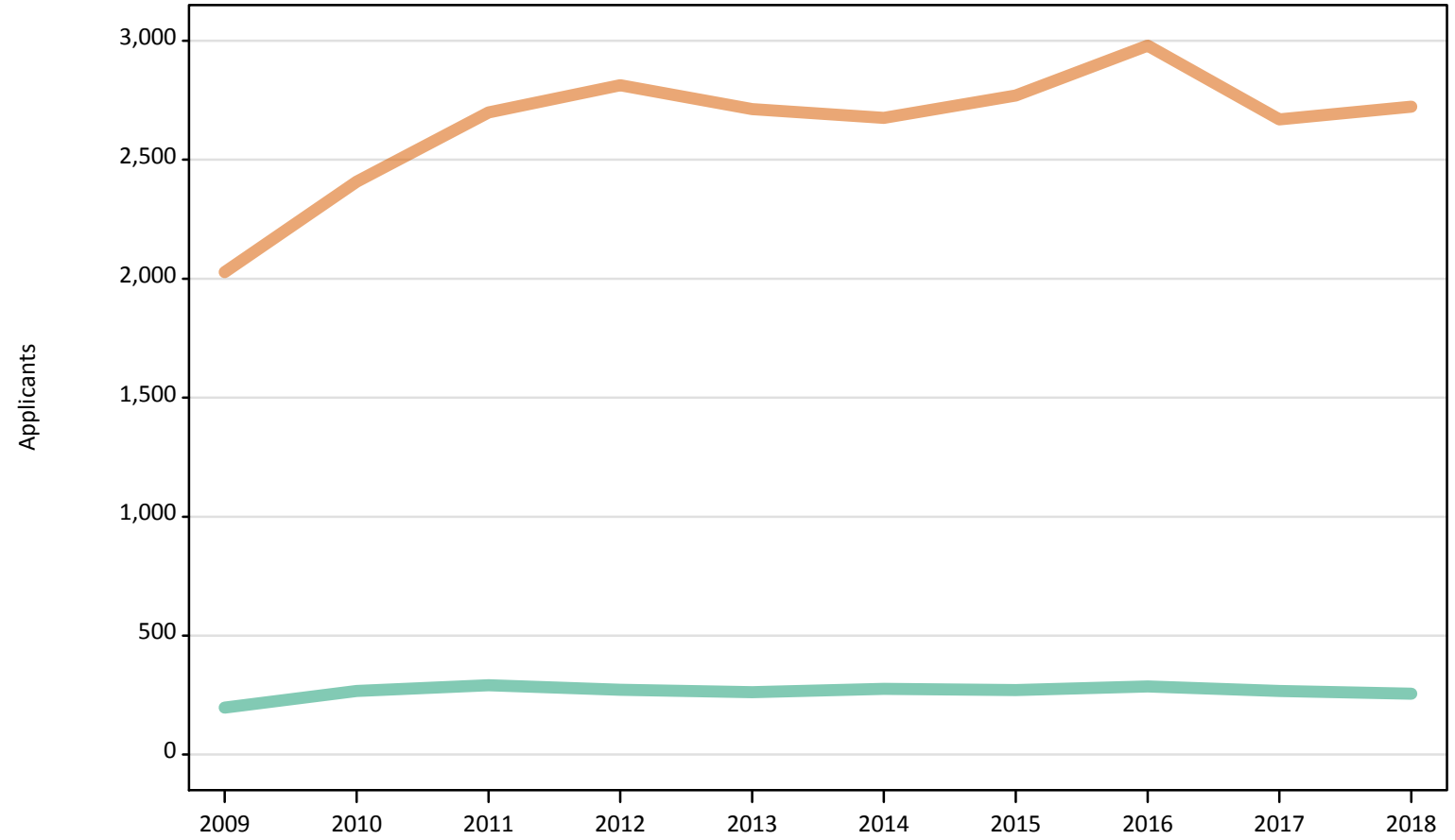
Men
Women



Note: The percentage change is not plotted in the above chart for groups with fewer than 500 applicants in any one cycle.

IB.2.22 Nursing applicants by sex: Wales

Men
Women



IB.2.23 Nursing applicants by age and sex: Wales

Age group and sex		2009	2010	2011	2012	2013	2014	2015	2016	2017	2018
Under 18	Women	0	10	0	0	0	0	0	0	0	0
	Men	0	0	0	0	0	0	0	0	0	0
18	Women	480	590	550	570	580	580	650	660	610	580
	Men	30	40	30	20	30	30	30	30	40	20
19	Women	200	270	340	310	290	300	300	340	320	330
	Men	20	20	20	20	20	20	20	30	20	20
20-24	Women	570	620	740	820	790	750	800	860	690	680
	Men	50	70	90	90	80	80	70	70	70	70
25-29	Women	300	380	460	460	470	500	480	480	470	460
	Men	40	60	60	60	60	60	60	60	60	50
30-34	Women	200	240	260	270	270	250	230	290	290	320
	Men	20	30	30	40	30	40	40	40	30	40
35 and over	Women	270	310	340	380	310	300	310	350	300	360
	Men	50	60	60	40	40	40	50	70	60	60
All ages	Women	2,030	2,410	2,700	2,810	2,710	2,680	2,770	2,980	2,670	2,720
	Men	200	270	290	270	260	280	270	290	270	260

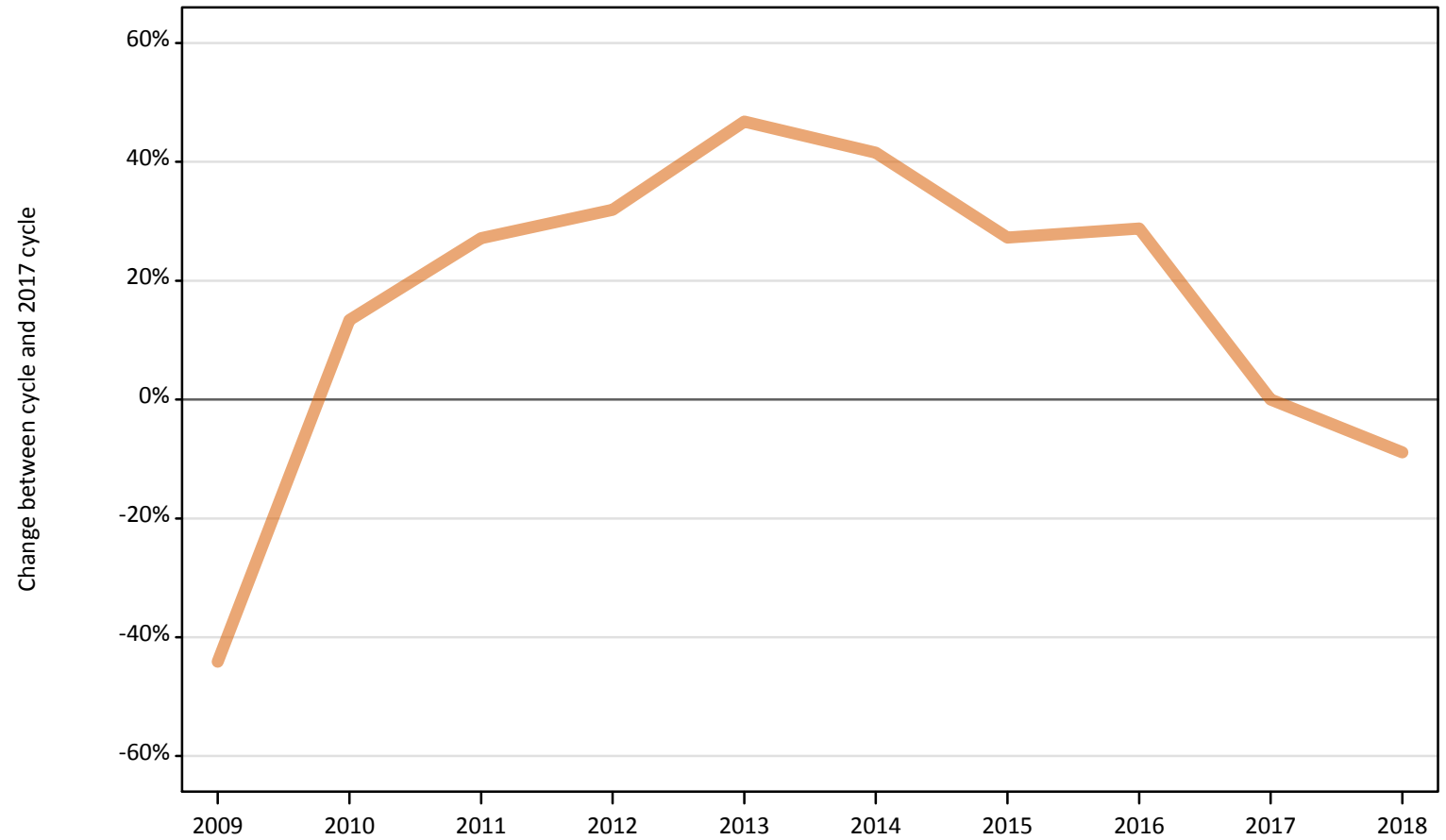
IB.2.24 Nursing applicants by age and sex: Wales
 Difference between cycle and 2017 cycle

Age group and sex		2009	2010	2011	2012	2013	2014	2015	2016	2017	2018
Under 18	Women										
	Men										
18	Women	-22%	-4%	-10%	-7%	-6%	-6%	6%	7%	0%	-5%
	Men	-20%	11%	-20%	-34%	-29%	-14%	-14%	-26%	0%	-37%
19	Women	-36%	-15%	8%	-3%	-7%	-6%	-3%	7%	0%	3%
	Men	25%	13%	50%	0%	13%	38%	-6%	56%	0%	44%
20-24	Women	-17%	-10%	8%	19%	14%	9%	16%	25%	0%	-1%
	Men	-26%	0%	29%	36%	23%	18%	9%	-2%	0%	8%
25-29	Women	-35%	-19%	-1%	-1%	0%	6%	3%	4%	0%	-2%
	Men	-39%	-10%	-2%	3%	3%	-5%	-2%	-2%	0%	-26%
30-34	Women	-28%	-15%	-9%	-4%	-4%	-12%	-18%	3%	0%	11%
	Men	-43%	-10%	-3%	23%	13%	43%	40%	40%	0%	23%
35 and over	Women	-11%	2%	14%	25%	4%	0%	2%	15%	0%	20%
	Men	-22%	3%	10%	-28%	-29%	-24%	-12%	17%	0%	-2%
All ages	Women	-24%	-10%	1%	5%	2%	0%	4%	12%	0%	2%
	Men	-26%	0%	9%	2%	-1%	3%	1%	7%	0%	-4%

Note: The percentage change is not recorded in the above table for groups with fewer than 10 applicants in that cycle or in the 2017 cycle.

IB.2.25 Nursing applicants by sex: EU (excluding UK)
Difference between cycle and 2017 cycle

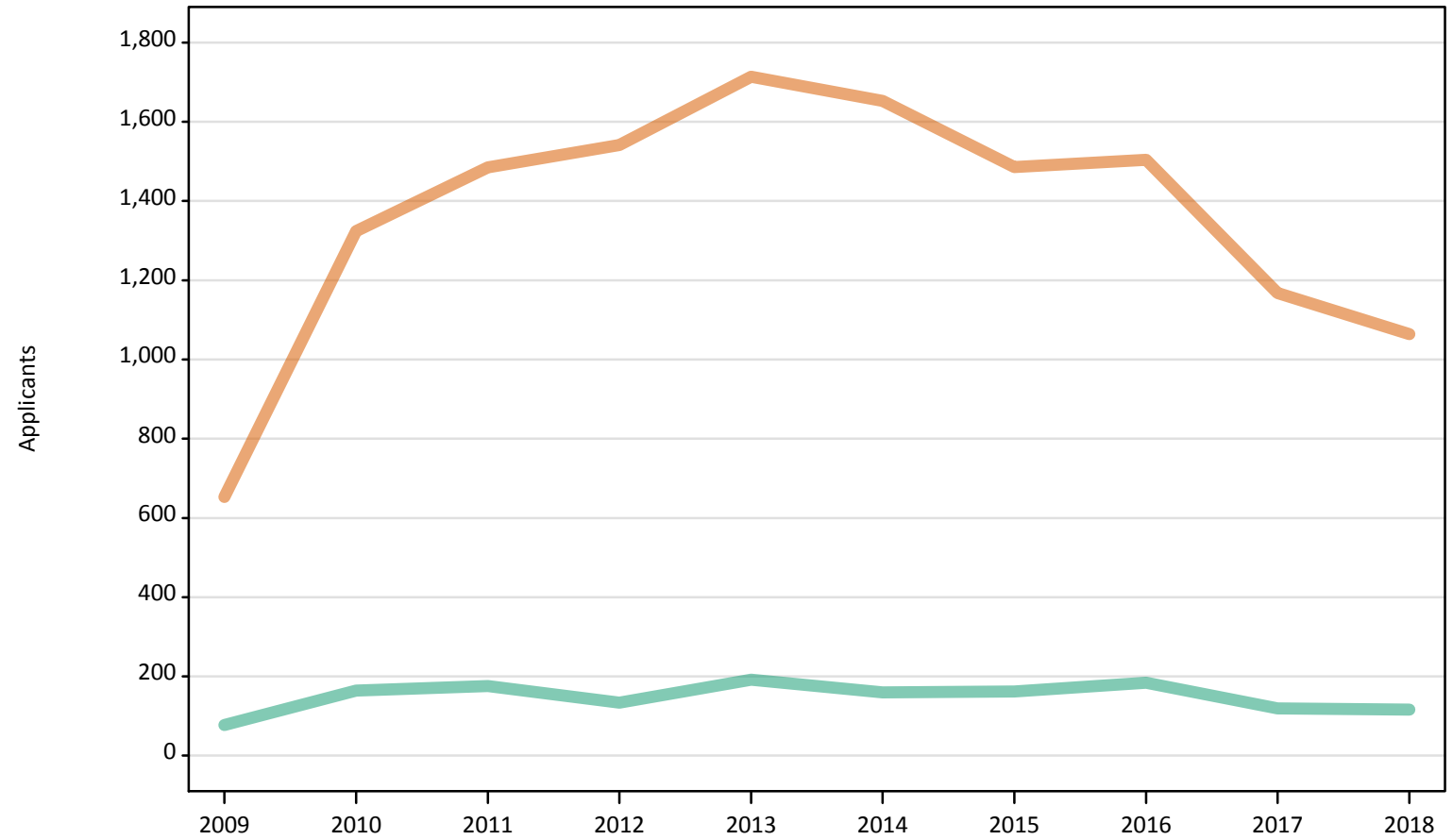
Men
Women



Note: The percentage change is not plotted in the above chart for groups with fewer than 500 applicants in any one cycle.

IB.2.26 Nursing applicants by sex: EU (excluding UK)

Men
Women



IB.2.27 Nursing applicants by age and sex: EU (excluding UK)

Age group and sex		2009	2010	2011	2012	2013	2014	2015	2016	2017	2018
Under 18	Women	30	80	80	70	80	80	60	60	50	50
	Men	0	0	10	0	10	0	10	0	0	0
18	Women	170	320	340	350	400	350	310	360	250	240
	Men	10	20	20	20	30	20	20	30	20	20
19	Women	130	330	330	350	380	390	360	370	300	280
	Men	10	20	30	20	30	30	30	30	20	30
20-24	Women	230	380	470	490	550	540	490	470	400	350
	Men	20	50	60	40	60	50	50	60	40	40
25-29	Women	50	130	170	160	180	180	160	140	80	70
	Men	20	30	30	20	30	20	20	20	10	10
30-34	Women	30	50	50	50	60	50	40	40	30	30
	Men	10	20	20	10	20	10	10	10	10	10
35 and over	Women	20	40	50	70	60	70	60	60	50	40
	Men	10	20	20	20	30	20	30	30	20	20
All ages	Women	650	1,320	1,490	1,540	1,710	1,650	1,490	1,500	1,170	1,060
	Men	80	160	180	130	190	160	160	180	120	120

IB.2.28 Nursing applicants by age and sex: EU (excluding UK)

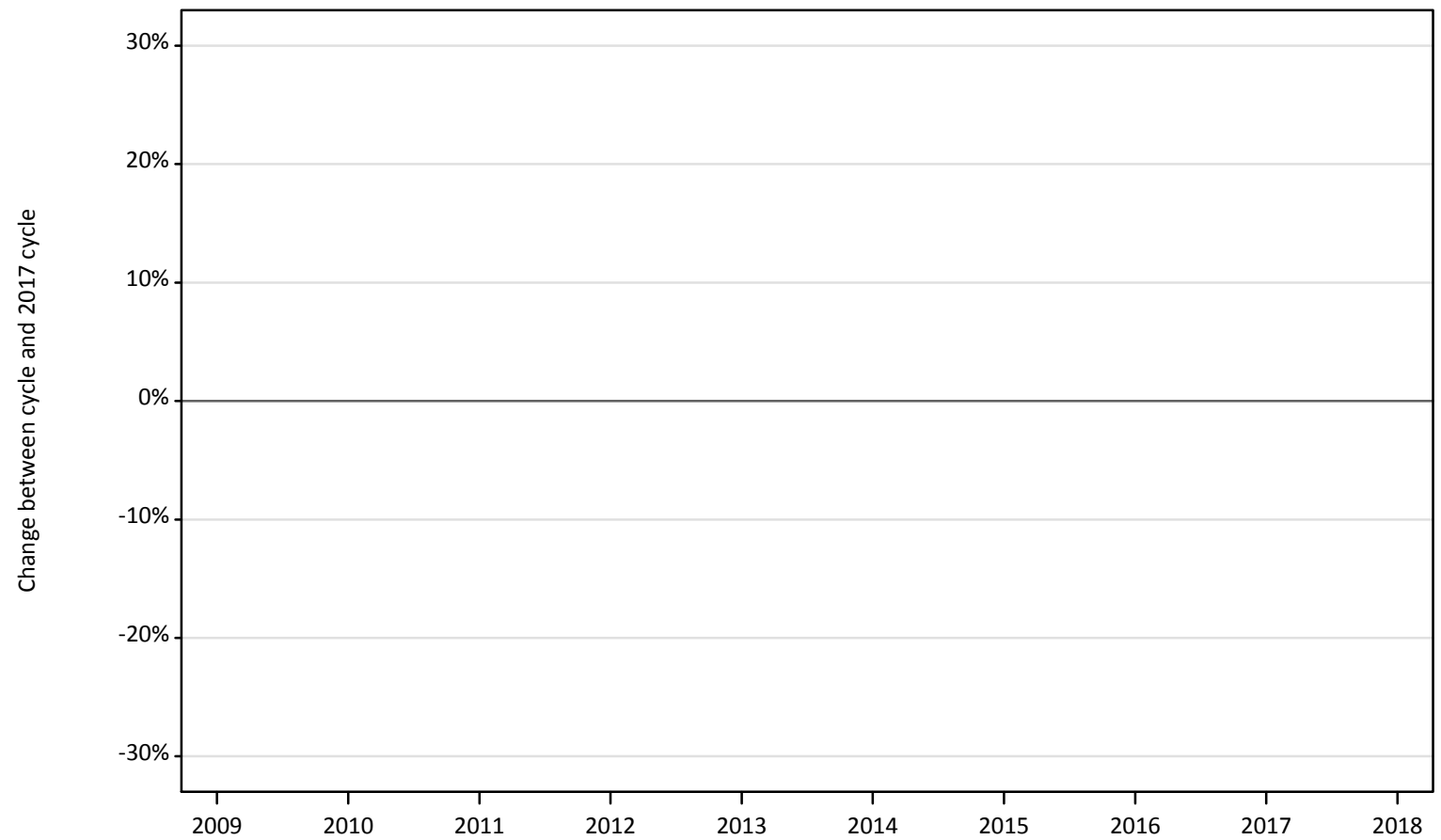
Difference between cycle and 2017 cycle

Age group and sex		2009	2010	2011	2012	2013	2014	2015	2016	2017	2018
Under 18	Women	-47%	43%	49%	38%	45%	49%	9%	17%	0%	-6%
	Men										
18	Women	-35%	26%	35%	39%	60%	39%	23%	42%	0%	-6%
	Men	-62%	-5%	-29%	14%	33%	10%	-5%	48%	0%	-10%
19	Women	-56%	11%	9%	16%	28%	30%	20%	24%	0%	-6%
	Men	-39%	4%	17%	-26%	26%	22%	26%	26%	0%	9%
20-24	Women	-44%	-5%	16%	21%	37%	33%	23%	16%	0%	-12%
	Men	-47%	39%	50%	13%	55%	42%	26%	45%	0%	-5%
25-29	Women	-38%	50%	107%	92%	115%	112%	95%	70%	0%	-14%
	Men	50%	170%	150%	90%	150%	140%	60%	100%	0%	10%
30-34	Women	-16%	66%	56%	59%	91%	59%	28%	28%	0%	-3%
	Men	160%	320%	320%	180%	200%	100%	140%	140%	0%	100%
35 and over	Women	-52%	-20%	9%	52%	33%	50%	35%	35%	0%	-9%
	Men	-61%	0%	28%	-11%	72%	6%	61%	89%	0%	-17%
All ages	Women	-44%	13%	27%	32%	47%	42%	27%	29%	0%	-9%
	Men	-35%	38%	48%	13%	61%	34%	36%	55%	0%	-3%

Note: The percentage change is not recorded in the above table for groups with fewer than 10 applicants in that cycle or in the 2017 cycle.

IB.2.29 Nursing applicants by sex: Not EU
Difference between cycle and 2017 cycle

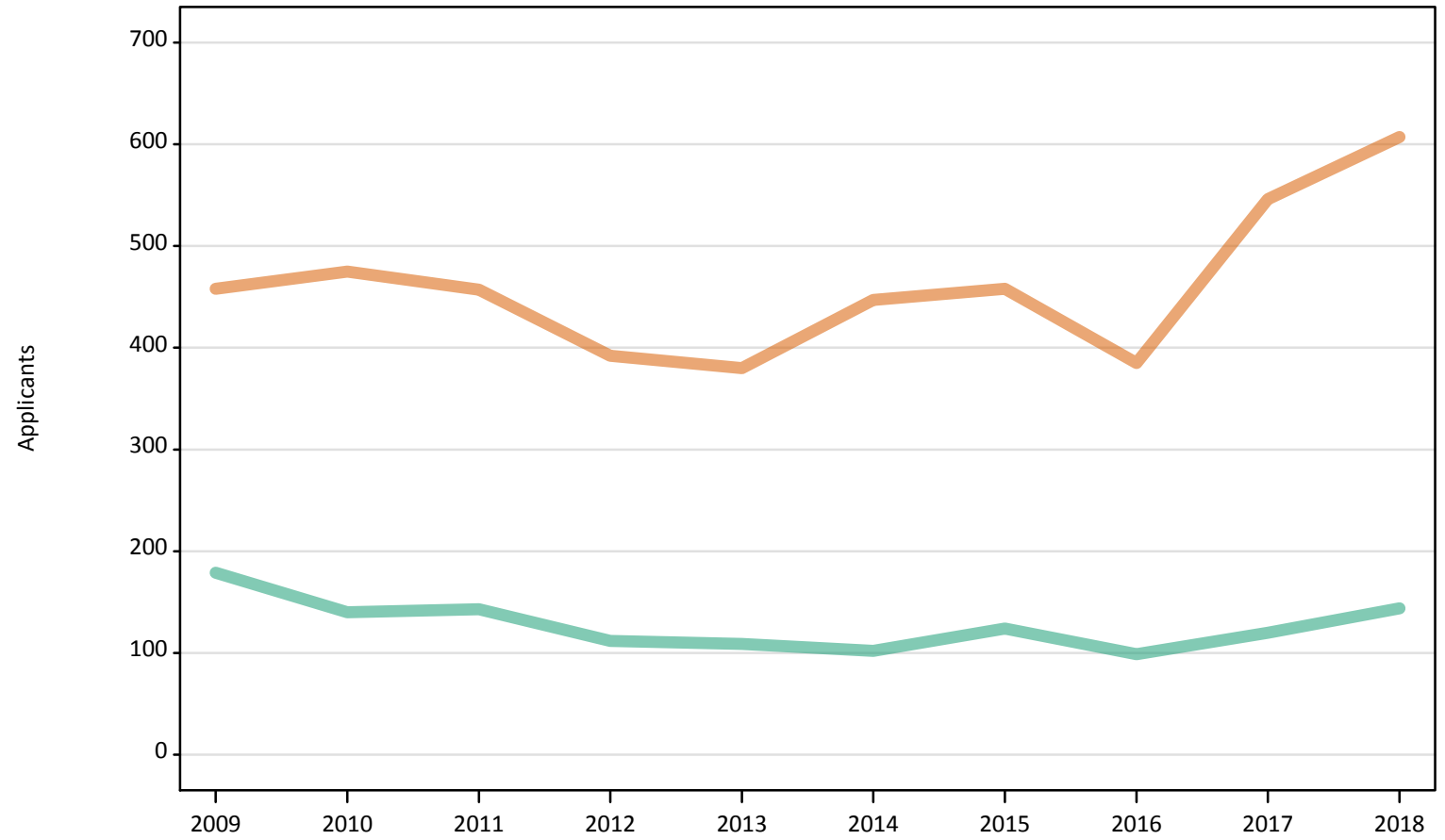
Men
Women



Note: The percentage change is not plotted in the above chart for groups with fewer than 500 applicants in any one cycle.

IB.2.30 Nursing applicants by sex: Not EU

Men
Women



IB.2.31 Nursing applicants by age and sex: Not EU

Age group and sex		2009	2010	2011	2012	2013	2014	2015	2016	2017	2018
Under 18	Women	10	10	10	10	10	10	10	10	10	10
	Men	0	0	0	0	0	0	0	0	0	0
18	Women	40	40	40	70	70	60	70	60	90	100
	Men	0	0	0	10	10	10	10	10	10	20
19	Women	40	50	50	40	40	50	50	40	60	80
	Men	10	10	10	10	10	10	10	10	10	10
20-24	Women	150	160	140	120	120	150	130	120	150	170
	Men	60	40	50	30	30	30	40	20	30	30
25-29	Women	100	100	110	70	80	80	100	70	90	100
	Men	60	40	40	30	40	20	20	20	20	30
30-34	Women	70	70	50	40	40	40	50	40	70	90
	Men	30	20	30	20	10	10	20	20	30	30
35 and over	Women	60	50	60	40	30	50	50	50	70	60
	Men	30	30	20	20	10	20	20	20	20	30
All ages	Women	460	480	460	390	380	450	460	390	550	610
	Men	180	140	140	110	110	100	120	100	120	140

IB.2.32 Nursing applicants by age and sex: Not EU

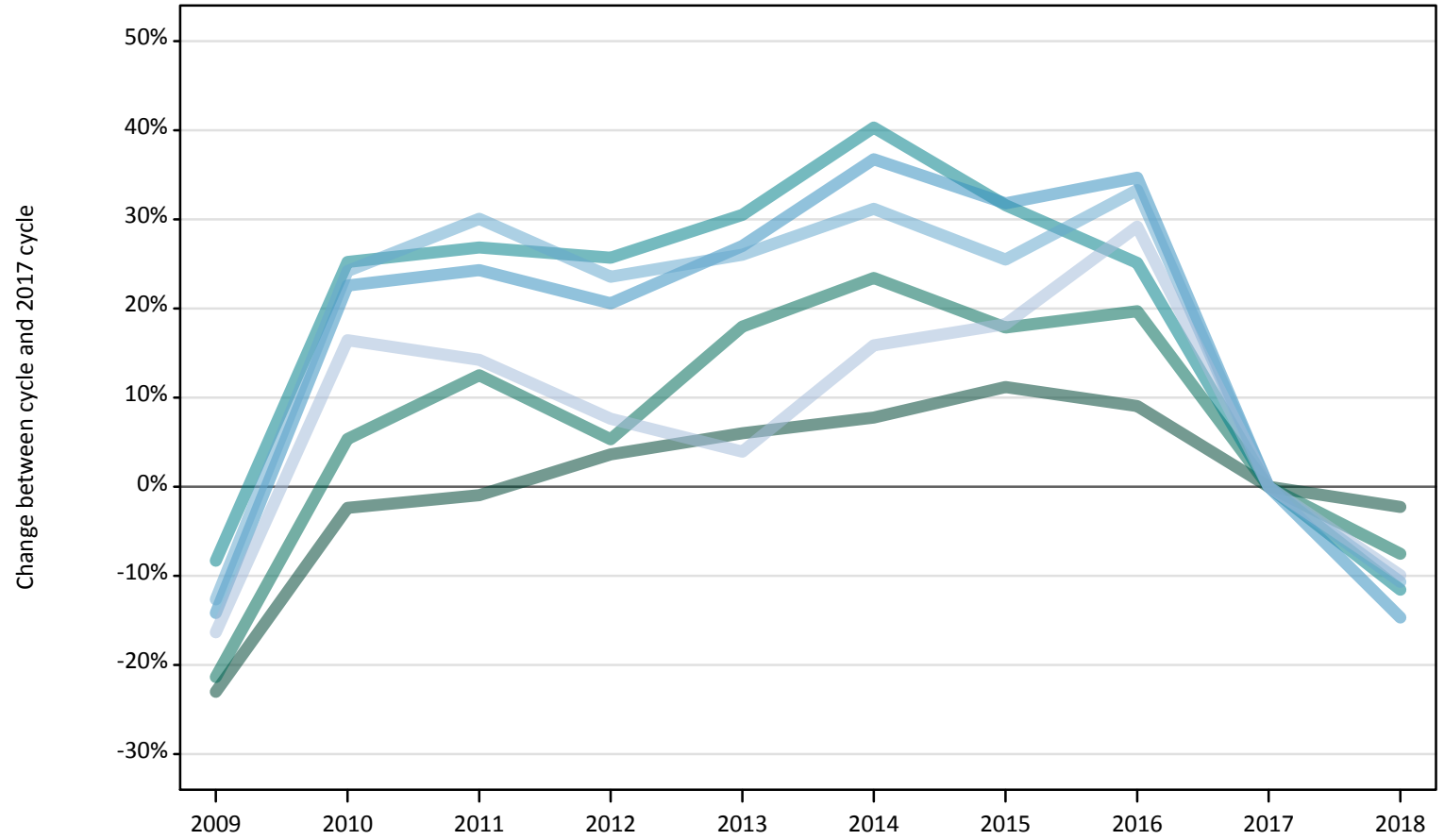
Difference between cycle and 2017 cycle

Age group and sex		2009	2010	2011	2012	2013	2014	2015	2016	2017	2018
Under 18	Women	-36%	-43%	-21%	-43%	-29%	-14%	-29%	-29%	0%	-7%
	Men										
18	Women	-55%	-58%	-58%	-16%	-25%	-32%	-18%	-36%	0%	14%
	Men				-18%	-18%	-27%	-9%	-9%	0%	45%
19	Women	-39%	-21%	-26%	-37%	-42%	-19%	-18%	-42%	0%	23%
	Men	-40%	-20%	-30%	-40%	-50%	-30%	-10%	10%	0%	-40%
20-24	Women	-3%	7%	-5%	-23%	-21%	0%	-13%	-23%	0%	14%
	Men	97%	43%	57%	10%	13%	3%	27%	-30%	0%	-13%
25-29	Women	5%	6%	15%	-22%	-11%	-15%	2%	-24%	0%	5%
	Men	133%	67%	75%	13%	54%	-13%	0%	-29%	0%	33%
30-34	Women	-3%	-3%	-24%	-40%	-46%	-41%	-28%	-38%	0%	25%
	Men	12%	-12%	12%	-36%	-52%	-44%	-20%	-36%	0%	28%
35 and over	Women	-13%	-23%	-13%	-42%	-59%	-22%	-30%	-22%	0%	-10%
	Men	44%	39%	-17%	0%	-33%	-6%	11%	22%	0%	67%
All ages	Women	-16%	-13%	-16%	-28%	-30%	-18%	-16%	-29%	0%	11%
	Men	49%	17%	19%	-7%	-9%	-15%	3%	-18%	0%	20%

Note: The percentage change is not recorded in the above table for groups with fewer than 10 applicants in that cycle or in the 2017 cycle.

IB.2.33 Nursing applicants by age: All domiciles
Difference between cycle and 2017 cycle

- 18
- 19
- 20-24
- 25-29
- 30-34
- 35 and over



Note: The percentage change is not plotted in the above chart for groups with fewer than 500 applicants in any one cycle.

IB.2.34 Nursing applicants by age: All domiciles

Domicile and age group		2009	2010	2011	2012	2013	2014	2015	2016	2017	2018
All domiciles	Under 18	380	490	290	150	160	170	150	140	140	120
	18	8,940	11,330	11,500	12,030	12,300	12,510	12,910	12,660	11,610	11,340
	19	4,840	6,490	6,930	6,490	7,270	7,600	7,260	7,370	6,160	5,700
	20-24	11,850	16,190	16,400	16,250	16,870	18,140	17,010	16,170	12,930	11,440
	25-29	6,590	9,410	9,540	9,260	9,750	10,500	10,120	10,340	7,680	6,550
	30-34	4,470	6,360	6,660	6,330	6,450	6,720	6,430	6,830	5,120	4,570
	35 and over	7,850	10,920	10,710	10,100	9,750	10,870	11,090	12,120	9,380	8,450
	All ages	44,920	61,180	62,020	60,590	62,550	66,490	64,950	65,620	53,010	48,170

IB.2.35 Nursing applicants by age: All domiciles

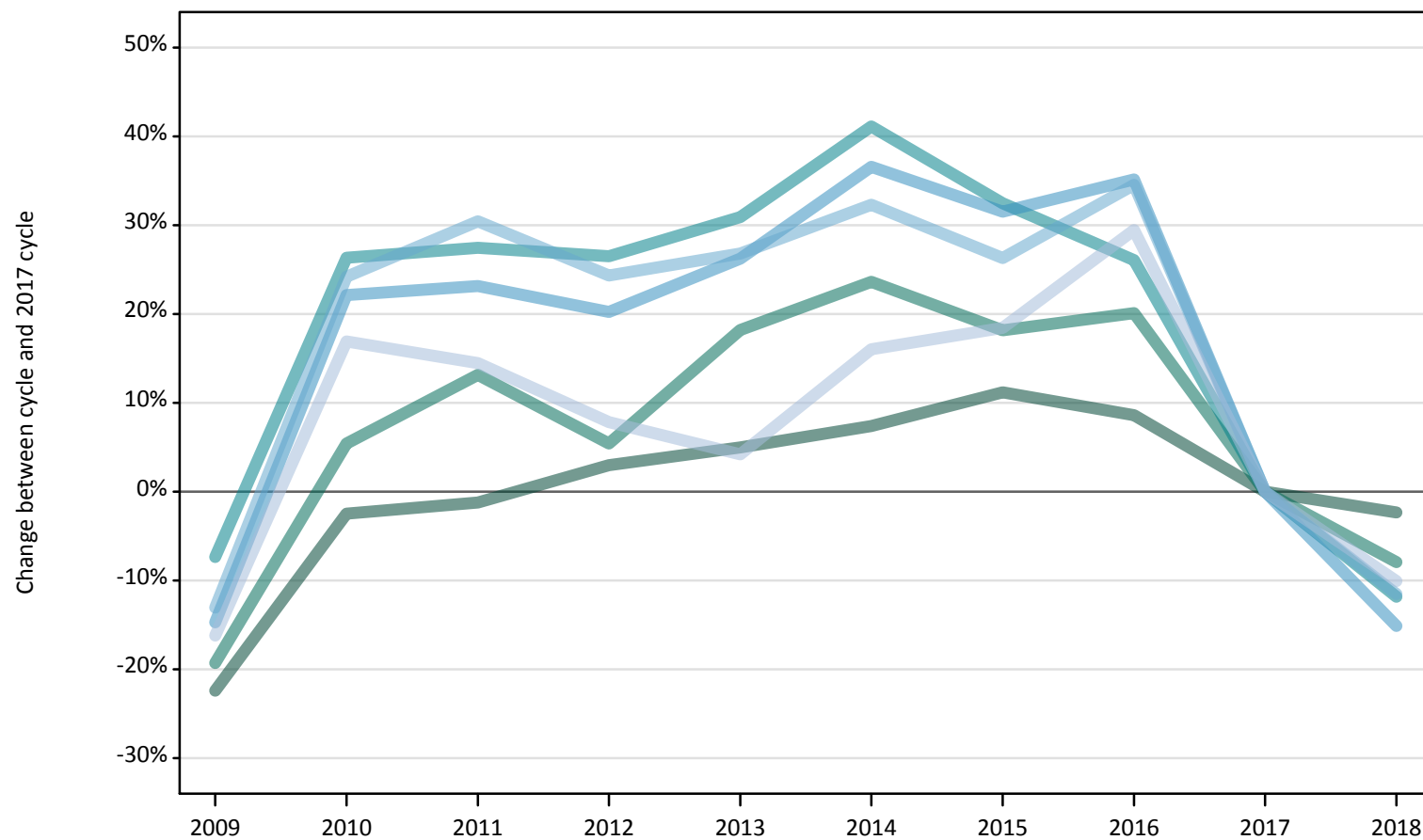
Difference between cycle and 2017 cycle

Domicile and age group		2009	2010	2011	2012	2013	2014	2015	2016	2017	2018
All domiciles	Under 18	171%	246%	104%	8%	13%	20%	4%	1%	0%	-15%
	18	-23%	-2%	-1%	4%	6%	8%	11%	9%	0%	-2%
	19	-21%	5%	13%	5%	18%	23%	18%	20%	0%	-8%
	20-24	-8%	25%	27%	26%	31%	40%	32%	25%	0%	-12%
	25-29	-14%	23%	24%	21%	27%	37%	32%	35%	0%	-15%
	30-34	-13%	24%	30%	24%	26%	31%	25%	33%	0%	-11%
	35 and over	-16%	16%	14%	8%	4%	16%	18%	29%	0%	-10%
	All ages	-15%	15%	17%	14%	18%	25%	23%	24%	0%	-9%

Note: The percentage change is not recorded in the above table for groups with fewer than 10 applicants in that cycle or in the 2017 cycle.

IB.2.36 Nursing applicants by age: UK
Difference between cycle and 2017 cycle

- 18
- 19
- 20-24
- 25-29
- 30-34
- 35 and over



Note: The percentage change is not plotted in the above chart for groups with fewer than 500 applicants in any one cycle.

IB.2.37 Nursing applicants by age: UK

Domicile and age group		2009	2010	2011	2012	2013	2014	2015	2016	2017	2018
UK	Under 18	340	400	190	70	70	70	70	60	70	50
	18	8,720	10,960	11,100	11,570	11,800	12,070	12,490	12,200	11,240	10,970
	19	4,650	6,080	6,520	6,080	6,810	7,130	6,810	6,920	5,760	5,310
	20-24	11,400	15,550	15,690	15,570	16,110	17,360	16,300	15,520	12,310	10,850
	25-29	6,370	9,120	9,190	8,980	9,420	10,190	9,820	10,090	7,470	6,340
	30-34	4,340	6,200	6,510	6,210	6,330	6,600	6,300	6,710	4,990	4,420
	35 and over	7,730	10,790	10,560	9,950	9,620	10,710	10,930	11,940	9,230	8,300
	All ages	43,560	59,080	59,760	58,410	60,150	64,130	62,720	63,450	51,050	46,240

IB.2.38 Nursing applicants by age: UK

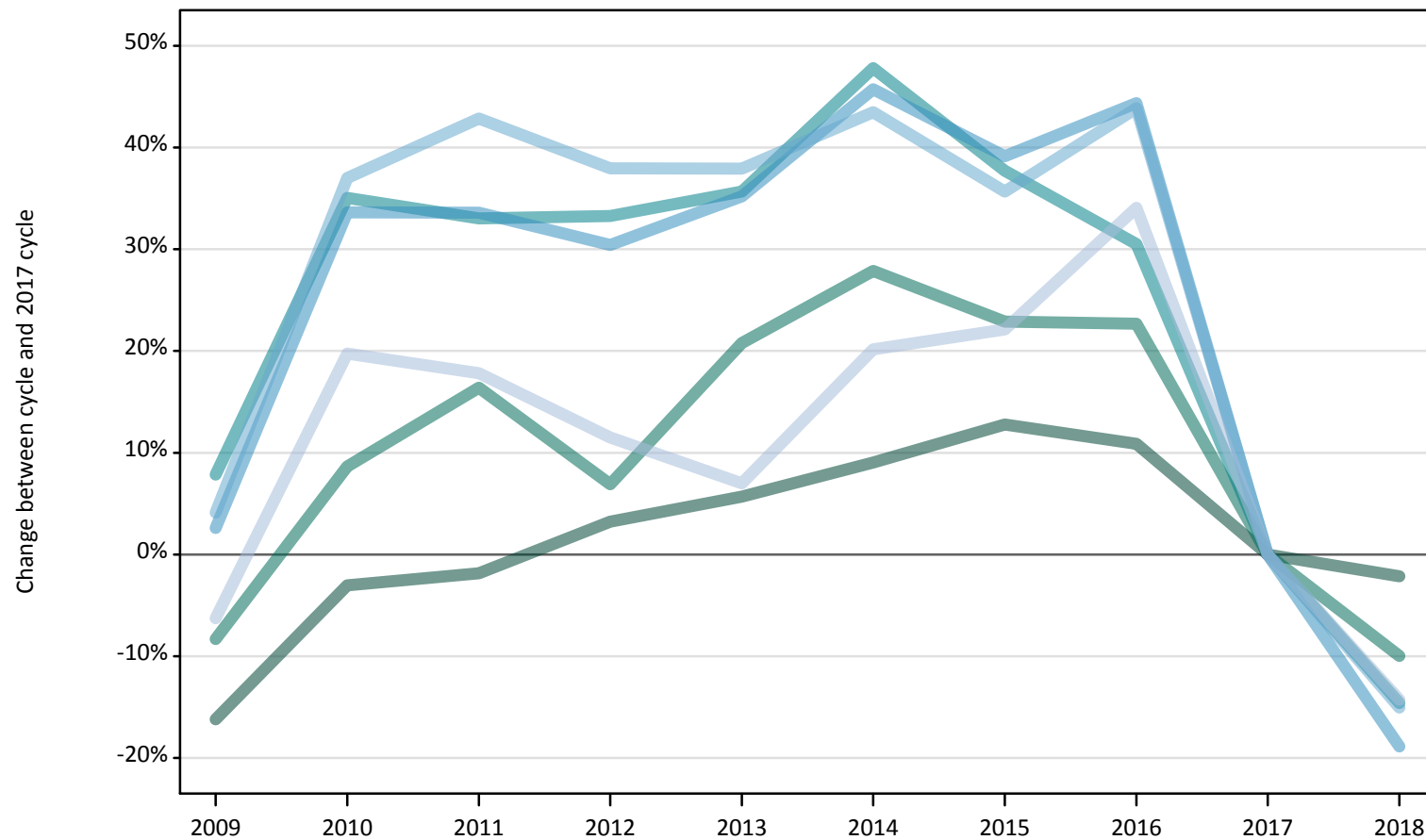
Difference between cycle and 2017 cycle

Domicile and age group		2009	2010	2011	2012	2013	2014	2015	2016	2017	2018
UK	Under 18	412%	497%	179%	-1%	-1%	6%	-1%	-4%	0%	-19%
	18	-22%	-2%	-1%	3%	5%	7%	11%	9%	0%	-2%
	19	-19%	5%	13%	5%	18%	24%	18%	20%	0%	-8%
	20-24	-7%	26%	27%	26%	31%	41%	32%	26%	0%	-12%
	25-29	-15%	22%	23%	20%	26%	37%	32%	35%	0%	-15%
	30-34	-13%	24%	30%	24%	27%	32%	26%	35%	0%	-12%
	35 and over	-16%	17%	14%	8%	4%	16%	18%	29%	0%	-10%
	All ages	-15%	16%	17%	14%	18%	26%	23%	24%	0%	-9%

Note: The percentage change is not recorded in the above table for groups with fewer than 10 applicants in that cycle or in the 2017 cycle.

IB.2.39 Nursing applicants by age: England
Difference between cycle and 2017 cycle

- 18
- 19
- 20-24
- 25-29
- 30-34
- 35 and over



Note: The percentage change is not plotted in the above chart for groups with fewer than 500 applicants in any one cycle.

IB.2.40 Nursing applicants by age: England

Domicile and age group		2009	2010	2011	2012	2013	2014	2015	2016	2017	2018
England	Under 18	330	290	130	20	20	20	20	10	20	20
	18	7,150	8,280	8,380	8,810	9,020	9,310	9,630	9,470	8,540	8,350
	19	4,170	4,950	5,300	4,870	5,500	5,820	5,590	5,580	4,550	4,100
	20-24	10,340	12,950	12,760	12,780	13,010	14,170	13,200	12,510	9,590	8,190
	25-29	5,840	7,610	7,610	7,430	7,700	8,300	7,930	8,220	5,700	4,620
	30-34	4,030	5,300	5,530	5,340	5,340	5,550	5,250	5,570	3,870	3,290
	35 and over	7,320	9,350	9,200	8,700	8,350	9,380	9,530	10,470	7,810	6,690
	All ages	39,190	48,720	48,890	47,950	48,940	52,550	51,160	51,840	40,060	35,260

IB.2.41 Nursing applicants by age: England

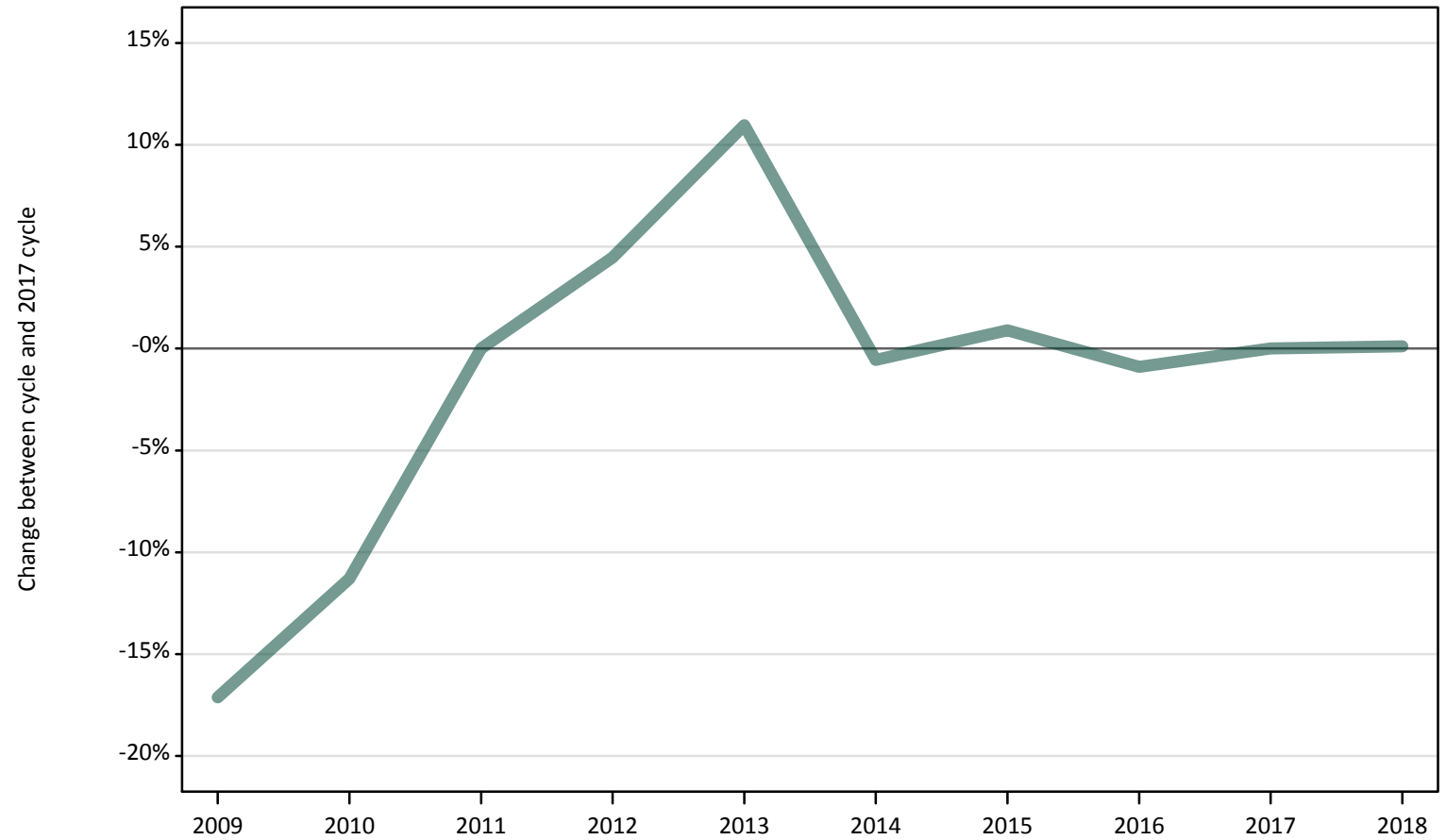
Difference between cycle and 2017 cycle

Domicile and age group		2009	2010	2011	2012	2013	2014	2015	2016	2017	2018
England	Under 18	2113%	1827%	740%	27%	33%	20%	27%	-7%	0%	13%
	18	-16%	-3%	-2%	3%	6%	9%	13%	11%	0%	-2%
	19	-8%	9%	16%	7%	21%	28%	23%	23%	0%	-10%
	20-24	8%	35%	33%	33%	36%	48%	38%	31%	0%	-15%
	25-29	3%	34%	34%	30%	35%	46%	39%	44%	0%	-19%
	30-34	4%	37%	43%	38%	38%	43%	36%	44%	0%	-15%
	35 and over	-6%	20%	18%	11%	7%	20%	22%	34%	0%	-14%
	All ages	-2%	22%	22%	20%	22%	31%	28%	29%	0%	-12%

Note: The percentage change is not recorded in the above table for groups with fewer than 10 applicants in that cycle or in the 2017 cycle.

IB.2.42 Nursing applicants by age: Northern Ireland
Difference between cycle and 2017 cycle

- 18
- 19
- 20-24
- 25-29
- 30-34
- 35 and over



Note: The percentage change is not plotted in the above chart for groups with fewer than 500 applicants in any one cycle.

IB.2.43 Nursing applicants by age: Northern Ireland

Domicile and age group		2009	2010	2011	2012	2013	2014	2015	2016	2017	2018
Northern Ireland	Under 18	0	10	0	0	0	0	0	0	0	0
	18	740	790	890	930	990	890	900	890	890	900
	19	160	210	280	310	440	400	370	410	390	350
	20-24	240	370	470	460	800	770	730	710	660	580
	25-29	100	150	170	160	340	360	340	350	280	260
	30-34	40	60	80	70	180	190	180	190	170	150
	35 and over	40	90	90	70	190	160	190	200	190	170
	All ages	1,330	1,680	1,970	2,010	2,950	2,770	2,710	2,750	2,590	2,400

IB.2.44 Nursing applicants by age: Northern Ireland

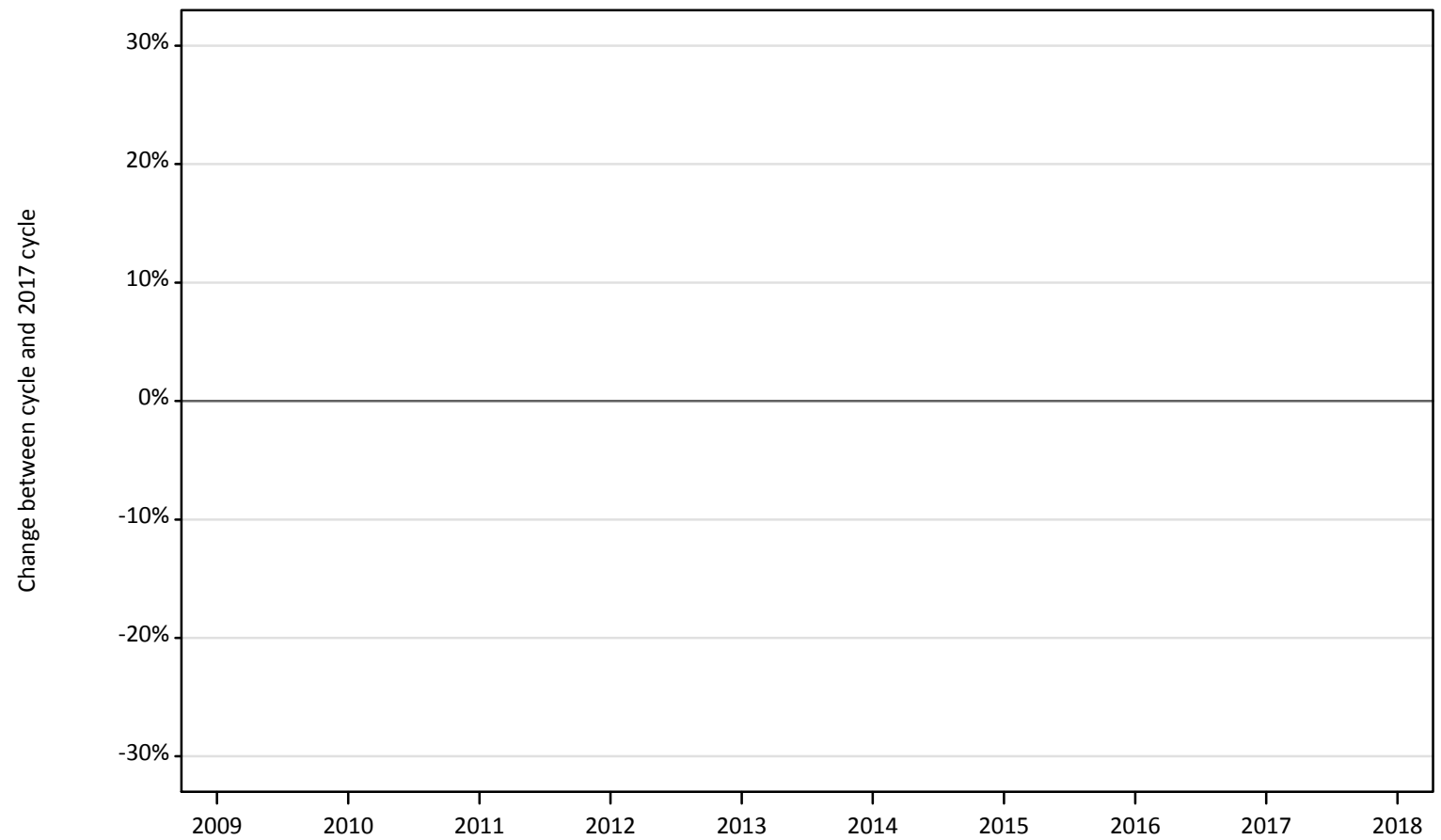
Difference between cycle and 2017 cycle

Domicile and age group		2009	2010	2011	2012	2013	2014	2015	2016	2017	2018
Northern Ireland	Under 18										
	18	-17%	-11%	0%	4%	11%	-1%	1%	-1%	0%	0%
	19	-60%	-46%	-29%	-22%	10%	2%	-7%	5%	0%	-10%
	20-24	-63%	-45%	-30%	-31%	22%	16%	11%	7%	0%	-13%
	25-29	-63%	-46%	-39%	-42%	23%	30%	22%	25%	0%	-8%
	30-34	-76%	-65%	-56%	-58%	6%	8%	5%	10%	0%	-15%
	35 and over	-77%	-50%	-54%	-63%	3%	-12%	1%	9%	0%	-10%
	All ages	-49%	-35%	-24%	-22%	14%	7%	5%	6%	0%	-7%

Note: The percentage change is not recorded in the above table for groups with fewer than 10 applicants in that cycle or in the 2017 cycle.

IB.2.45 Nursing applicants by age: Scotland
Difference between cycle and 2017 cycle

- 18
- 19
- 20-24
- 25-29
- 30-34
- 35 and over



Note: The percentage change is not plotted in the above chart for groups with fewer than 500 applicants in any one cycle.

IB.2.46 Nursing applicants by age: Scotland

Domicile and age group		2009	2010	2011	2012	2013	2014	2015	2016	2017	2018
Scotland	Under 18	10	100	60	40	40	50	40	40	50	40
	18	320	1,260	1,240	1,230	1,180	1,260	1,290	1,170	1,160	1,120
	19	100	630	580	580	570	590	530	560	490	510
	20-24	200	1,550	1,640	1,420	1,430	1,600	1,490	1,370	1,300	1,330
	25-29	80	920	890	860	850	980	1,010	970	960	960
	30-34	50	570	620	480	500	570	600	620	630	630
	35 and over	60	980	870	760	720	820	850	860	880	1,020
	All ages	810	6,000	5,910	5,380	5,290	5,860	5,820	5,600	5,470	5,600

IB.2.47 Nursing applicants by age: Scotland

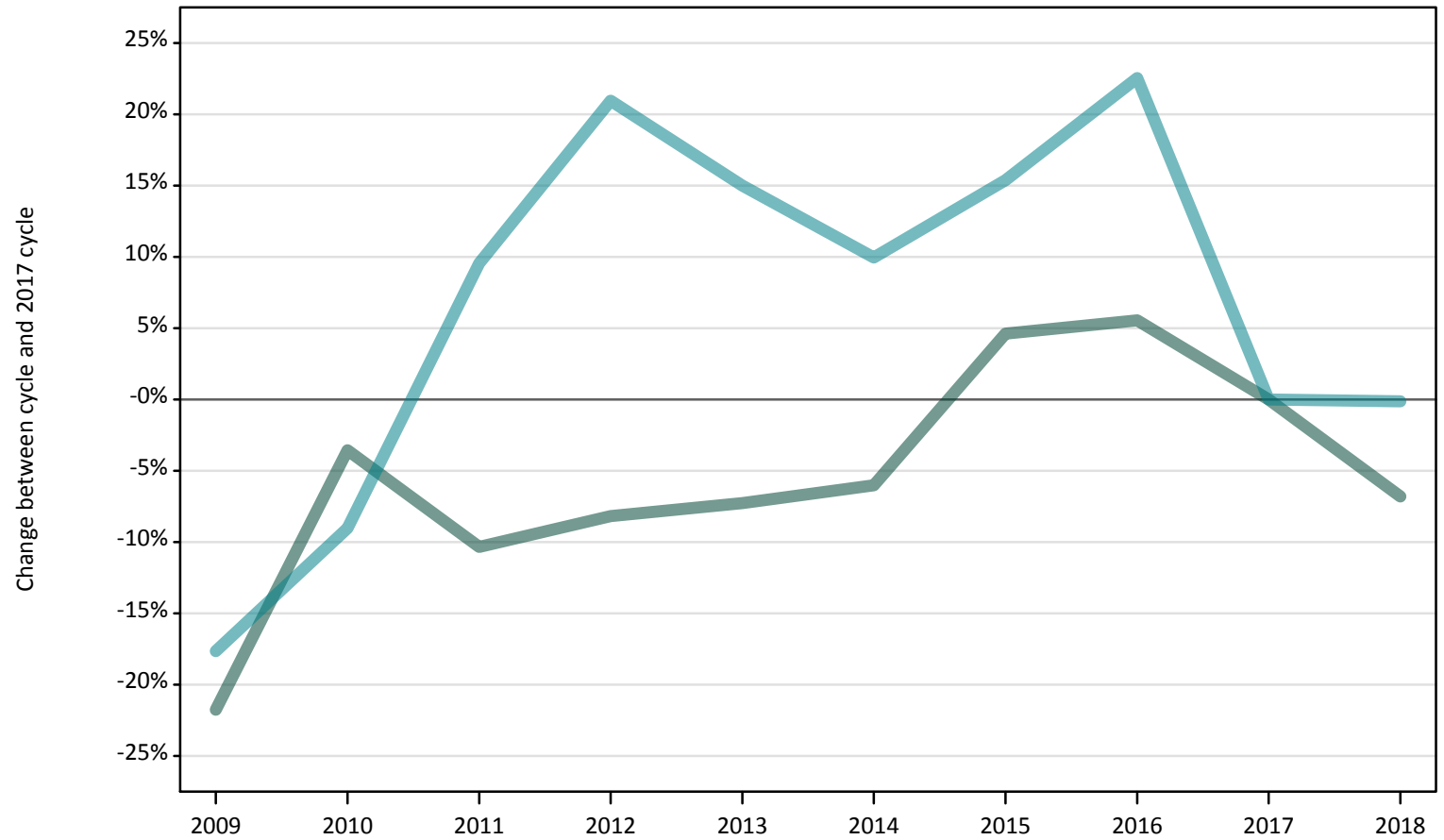
Difference between cycle and 2017 cycle

Domicile and age group		2009	2010	2011	2012	2013	2014	2015	2016	2017	2018
Scotland	Under 18	-83%	104%	23%	-10%	-15%	6%	-8%	-10%	0%	-25%
	18	-73%	9%	8%	6%	2%	9%	11%	1%	0%	-3%
	19	-80%	29%	20%	19%	17%	21%	9%	16%	0%	4%
	20-24	-85%	19%	26%	9%	10%	23%	15%	5%	0%	2%
	25-29	-92%	-4%	-7%	-11%	-12%	2%	5%	1%	0%	-0%
	30-34	-92%	-10%	-3%	-24%	-21%	-10%	-6%	-2%	0%	-1%
	35 and over	-93%	12%	-0%	-13%	-18%	-7%	-3%	-1%	0%	17%
	All ages	-85%	10%	8%	-2%	-3%	7%	6%	2%	0%	2%

Note: The percentage change is not recorded in the above table for groups with fewer than 10 applicants in that cycle or in the 2017 cycle.

IB.2.48 Nursing applicants by age: Wales
Difference between cycle and 2017 cycle

- 18
- 19
- 20-24
- 25-29
- 30-34
- 35 and over



Note: The percentage change is not plotted in the above chart for groups with fewer than 500 applicants in any one cycle.

IB.2.49 Nursing applicants by age: Wales

Domicile and age group		2009	2010	2011	2012	2013	2014	2015	2016	2017	2018
Wales	Under 18	0	10	0	0	0	0	0	0	0	0
	18	510	630	580	600	600	610	680	680	650	600
	19	220	290	360	320	310	320	320	360	330	350
	20-24	620	690	830	910	870	830	870	920	750	750
	25-29	340	430	520	530	530	550	540	550	530	500
	30-34	220	270	290	310	310	300	280	340	320	350
	35 and over	310	370	410	420	350	350	360	410	360	420
	All ages	2,220	2,680	2,990	3,090	2,980	2,950	3,040	3,270	2,940	2,980

IB.2.50 Nursing applicants by age: Wales

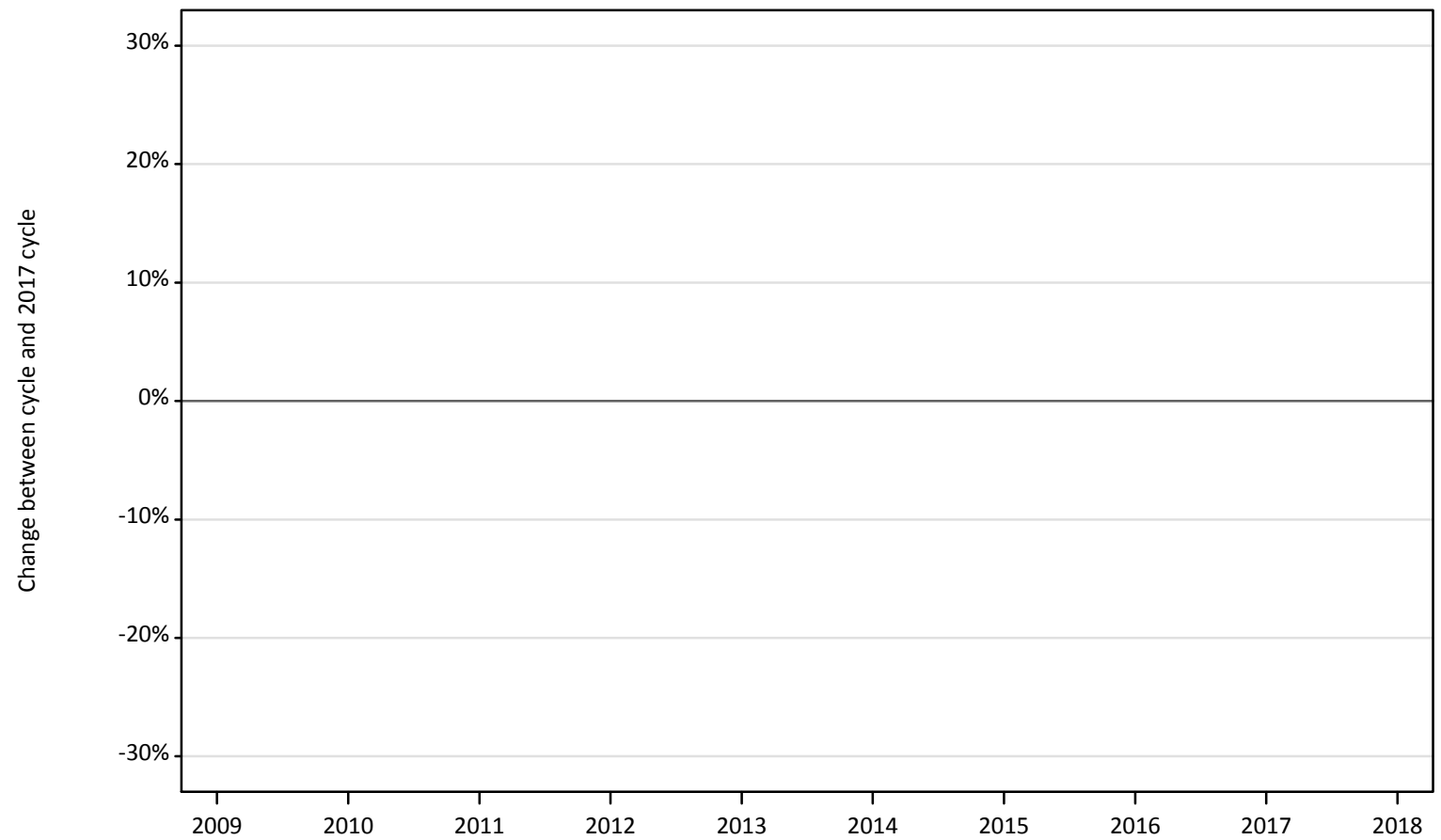
Difference between cycle and 2017 cycle

Domicile and age group		2009	2010	2011	2012	2013	2014	2015	2016	2017	2018
Wales	Under 18										
	18	-22%	-4%	-10%	-8%	-7%	-6%	5%	6%	0%	-7%
	19	-33%	-13%	10%	-2%	-6%	-4%	-4%	9%	0%	5%
	20-24	-18%	-9%	10%	21%	15%	10%	15%	23%	0%	-0%
	25-29	-36%	-18%	-1%	-0%	0%	5%	2%	3%	0%	-5%
	30-34	-30%	-15%	-8%	-2%	-2%	-6%	-13%	6%	0%	12%
	35 and over	-13%	2%	13%	16%	-2%	-4%	-0%	15%	0%	17%
	All ages	-24%	-9%	2%	5%	1%	1%	4%	11%	0%	1%

Note: The percentage change is not recorded in the above table for groups with fewer than 10 applicants in that cycle or in the 2017 cycle.

IB.2.51 Nursing applicants by age: EU (excluding UK)
Difference between cycle and 2017 cycle

- 18
- 19
- 20-24
- 25-29
- 30-34
- 35 and over



Note: The percentage change is not plotted in the above chart for groups with fewer than 500 applicants in any one cycle.

IB.2.52 Nursing applicants by age: EU (excluding UK)

Domicile and age group		2009	2010	2011	2012	2013	2014	2015	2016	2017	2018
EU (excluding UK)	Under 18	30	80	90	70	80	80	70	70	60	50
	18	170	340	360	370	430	370	330	390	270	260
	19	150	360	350	370	410	420	390	400	320	310
	20-24	250	440	520	530	610	590	540	520	440	390
	25-29	70	150	200	180	210	200	180	160	90	80
	30-34	40	70	70	70	80	60	50	50	40	40
	35 and over	30	60	70	90	90	90	90	100	60	60
	All ages	730	1,490	1,660	1,680	1,910	1,810	1,650	1,690	1,290	1,180

IB.2.53 Nursing applicants by age: EU (excluding UK)

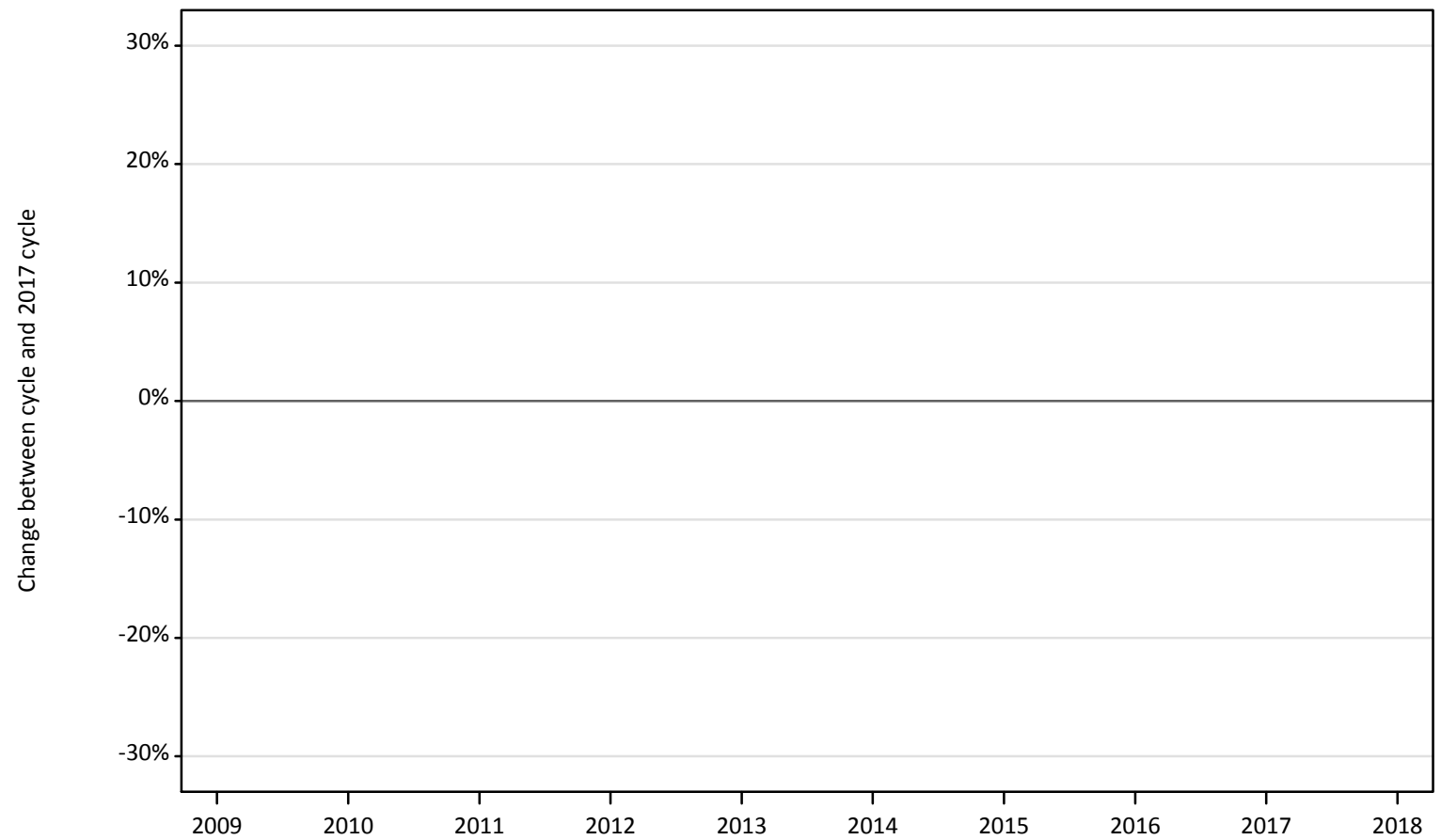
Difference between cycle and 2017 cycle

Domicile and age group		2009	2010	2011	2012	2013	2014	2015	2016	2017	2018
EU (excluding UK)	Under 18	-51%	35%	53%	30%	44%	42%	16%	14%	0%	-12%
	18	-37%	24%	30%	37%	58%	37%	21%	42%	0%	-7%
	19	-55%	10%	10%	13%	28%	30%	20%	25%	0%	-5%
	20-24	-44%	-1%	19%	21%	38%	34%	23%	18%	0%	-12%
	25-29	-29%	63%	112%	91%	119%	115%	91%	73%	0%	-12%
	30-34	8%	100%	92%	76%	105%	65%	43%	43%	0%	11%
	35 and over	-55%	-14%	14%	34%	44%	38%	42%	50%	0%	-11%
	All ages	-43%	16%	29%	30%	48%	41%	28%	31%	0%	-8%

Note: The percentage change is not recorded in the above table for groups with fewer than 10 applicants in that cycle or in the 2017 cycle.

IB.2.54 Nursing applicants by age: Not EU
Difference between cycle and 2017 cycle

- 18
- 19
- 20-24
- 25-29
- 30-34
- 35 and over



Note: The percentage change is not plotted in the above chart for groups with fewer than 500 applicants in any one cycle.

IB.2.55 Nursing applicants by age: Not EU

Domicile and age group		2009	2010	2011	2012	2013	2014	2015	2016	2017	2018
Not EU	Under 18	10	10	10	10	10	20	10	10	20	20
	18	40	40	40	80	80	70	80	70	100	120
	19	40	60	50	50	40	60	60	50	70	80
	20-24	210	210	190	150	150	180	170	140	180	200
	25-29	160	140	150	100	120	100	120	90	120	130
	30-34	90	90	80	60	50	50	70	60	90	120
	35 and over	90	80	80	60	40	70	70	80	90	90
	All ages	640	620	600	500	490	550	580	480	670	750

IB.2.56 Nursing applicants by age: Not EU

Difference between cycle and 2017 cycle

Domicile and age group		2009	2010	2011	2012	2013	2014	2015	2016	2017	2018
Not EU	Under 18	-44%	-50%	-31%	-31%	-38%	0%	-19%	-25%	0%	-6%
	18	-56%	-61%	-59%	-16%	-24%	-31%	-17%	-33%	0%	17%
	19	-39%	-21%	-26%	-38%	-43%	-21%	-17%	-35%	0%	14%
	20-24	13%	13%	5%	-17%	-15%	1%	-6%	-24%	0%	9%
	25-29	31%	19%	27%	-15%	3%	-14%	2%	-25%	0%	11%
	30-34	1%	-5%	-14%	-39%	-47%	-42%	-26%	-38%	0%	26%
	35 and over	-1%	-10%	-14%	-33%	-54%	-18%	-22%	-13%	0%	6%
	All ages	-4%	-8%	-10%	-24%	-27%	-18%	-13%	-27%	0%	13%

Note: The percentage change is not recorded in the above table for groups with fewer than 10 applicants in that cycle or in the 2017 cycle.

IB.2.57 Technical notes and definitions

Applicants have been able to submit applications for all 2018 courses since early September.

Applicants who submit their applications to UCAS by the January deadline are considered 'on time' applicants for the large majority of courses offered through UCAS. Some art and design courses have a later deadline of 24 March. By definition all main scheme applications have been received by the 30 June deadline.

Subject group 'B7' covers courses related to nursing. These additional tables include applicants who made at least one choice to a 'B7' course by the January deadline. The primary deadline applicant statistics, which include applicants to all courses, are available on the UCAS website.

Counts of the number of applicants reported have been rounded to the nearest 10 applicants, this may result in instances where totals do not equal the sum of the components. Proportional changes have been rounded to the nearest whole percentage point.

In 2009, the Canary Islands classification changed from Not EU to EU (excluding UK). In order to present an accurate time series, the Canary Islands have been consistently classified as EU (excluding UK). This will result in differences with data published prior to 2010.

Age

This statistical release uses country-specific age definitions which align with the cut off points for school/college cohorts within the different administrations of the UK. For England and Wales ages are defined on the 31 August, for Northern Ireland on the 1 July and for Scotland on the 28 February the following year. Defining ages in this way matches the assignment of children to school cohorts. For applicants outside of the UK the cohort cut off for England and Wales has been used.

Applicant

A person who has made an application in the UCAS system during the cycle reported (including applications for deferred entry). Records of prior acceptance (RPAs) are excluded.

Application

An application to a course at a provider made by an applicant in the UCAS main scheme. Applicants may make up to five main scheme applications.

Country of provider

An applicant may be counted once for each provider country they have applied to in the main scheme. If an applicant has applied to providers in multiple countries then the applicant is counted once within each country of provider applied to.

Domicile

Declared area of permanent residence. The Channel Islands and the Isle of Man have been assigned as 'Not EU'.

Ethnic group

High level grouping of ethnic origin as declared by the applicant: 'Asian', 'Black', 'Mixed', 'White', 'Other', 'Unknown'.

First time applicant

An applicant that did not apply to the UCAS scheme in the previous cycle.

Main scheme

The main UCAS application scheme through which up to five providers/courses can be applied to. This opens in September and closes to new applications on 30 June the following year.

Reapplicant

An applicant that applied to the UCAS scheme in the previous cycle.

Sex

As declared by the applicant.

SIMD 2016

Scottish Index of Multiple Deprivation identifies small area concentrations of multiple deprivation across all of Scotland, providing a relative measure of deprivation among small areas (data zones). In this report, the SIMD 2016 has been used to group areas in each year in the times series.

POLAR3

Developed by HEFCE and classifies small areas across the UK into five groups, according to their level of young participation in HE. Each of these groups represents around 20 per cent of young people, and is ranked from quintile 1 (areas with the lowest young participation rates, considered as the most disadvantaged) to quintile 5 (highest young participation rates, considered most advantaged).

POLAR4

Developed by HEFCE and classifies small areas across the UK into five groups, according to their level of young participation in HE. Each of these groups represents around 20 per cent of young people, and is ranked from quintile 1 (areas with the lowest young participation rates, considered as the most disadvantaged) to quintile 5 (highest young participation rates, considered most advantaged). POLAR4 is the most recent version of the POLAR classification, and is available for the first time in UCAS? reporting since its launch in 2017.

Tariff Group of provider

Providers are grouped as higher, medium or lower tariff based on their average levels of attainment of their accepted applicants (summarised through UCAS Tariff points) in recent cycles. Each group of providers accounted for around a third of all UK 18 year old acceptances in recent cycles.

Subject group

The JACS3 classification used to classify courses into subject groups.