

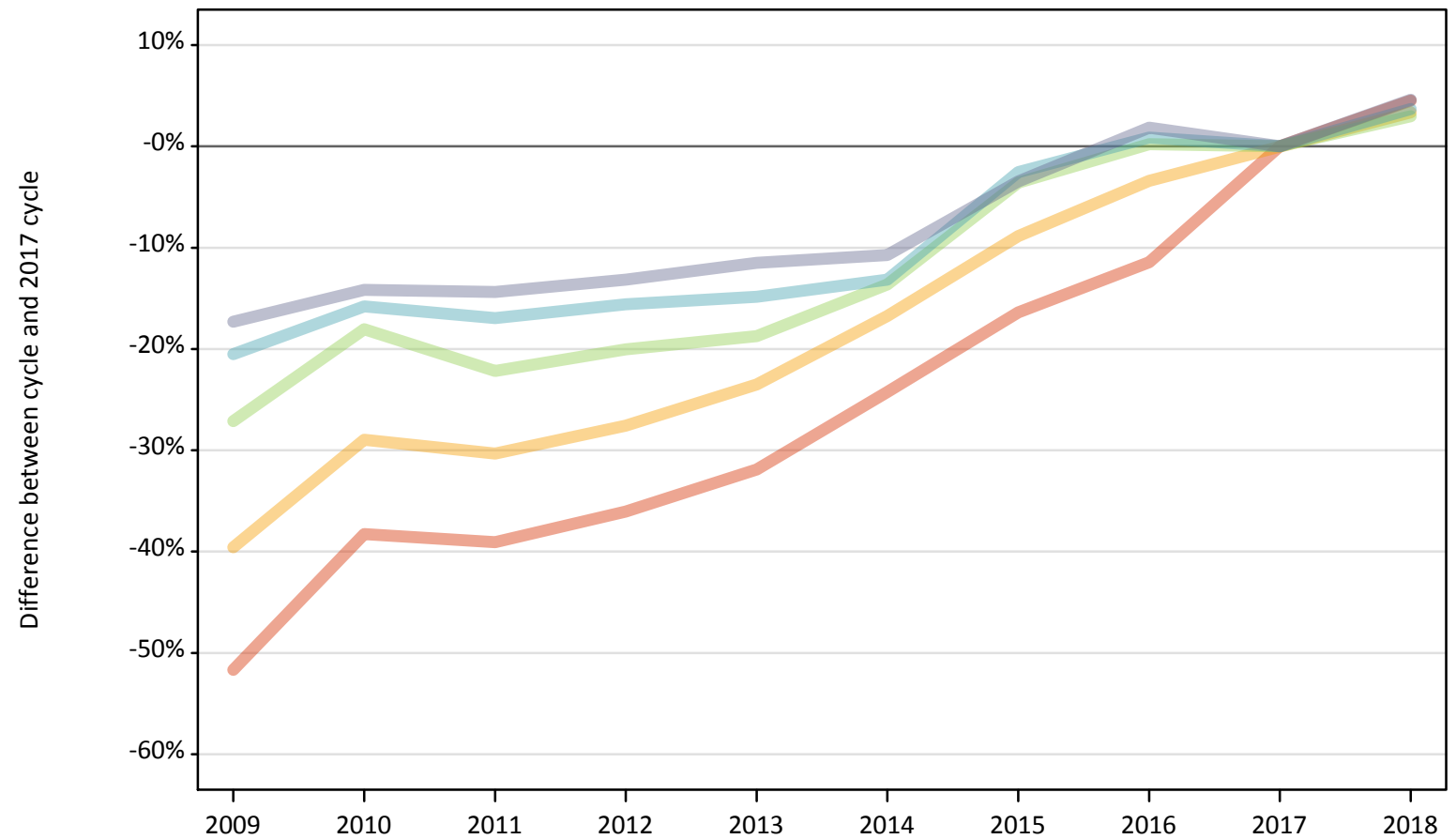
Daily Clearing Analysis: SIMD16

Analysis at 00:05 on Tuesday 7 August 2018 (SQA results day)

J.1 Placed applicants from Scotland by SIMD16 quintile: SQA results day

Placed applicants: change relative to 2017 cycle totals

- Quintile 1
- Quintile 2
- Quintile 3
- Quintile 4
- Quintile 5



Note: The percentage change is not plotted in the above chart for groups with fewer than 30 placed applicants in any one cycle.

J.2 Placed applicants from Scotland by SIMD16 quintile: SQA results day

Applicant Status	SIMD16	2009	2010	2011	2012	2013	2014	2015	2016	2017	2018
Placed	Quintile 1	2,010	2,560	2,530	2,660	2,830	3,150	3,470	3,680	4,150	4,340
	Quintile 2	2,700	3,170	3,110	3,240	3,420	3,720	4,070	4,320	4,470	4,620
	Quintile 3	3,800	4,280	4,060	4,170	4,240	4,510	5,030	5,230	5,220	5,370
	Quintile 4	5,120	5,420	5,340	5,430	5,480	5,590	6,270	6,490	6,430	6,670
	Quintile 5	6,920	7,180	7,160	7,260	7,400	7,470	8,070	8,520	8,360	8,750

J.3 Placed applicants from Scotland by SIMD16 quintile: SQA results day

Placed applicants: change relative to 2017 cycle totals

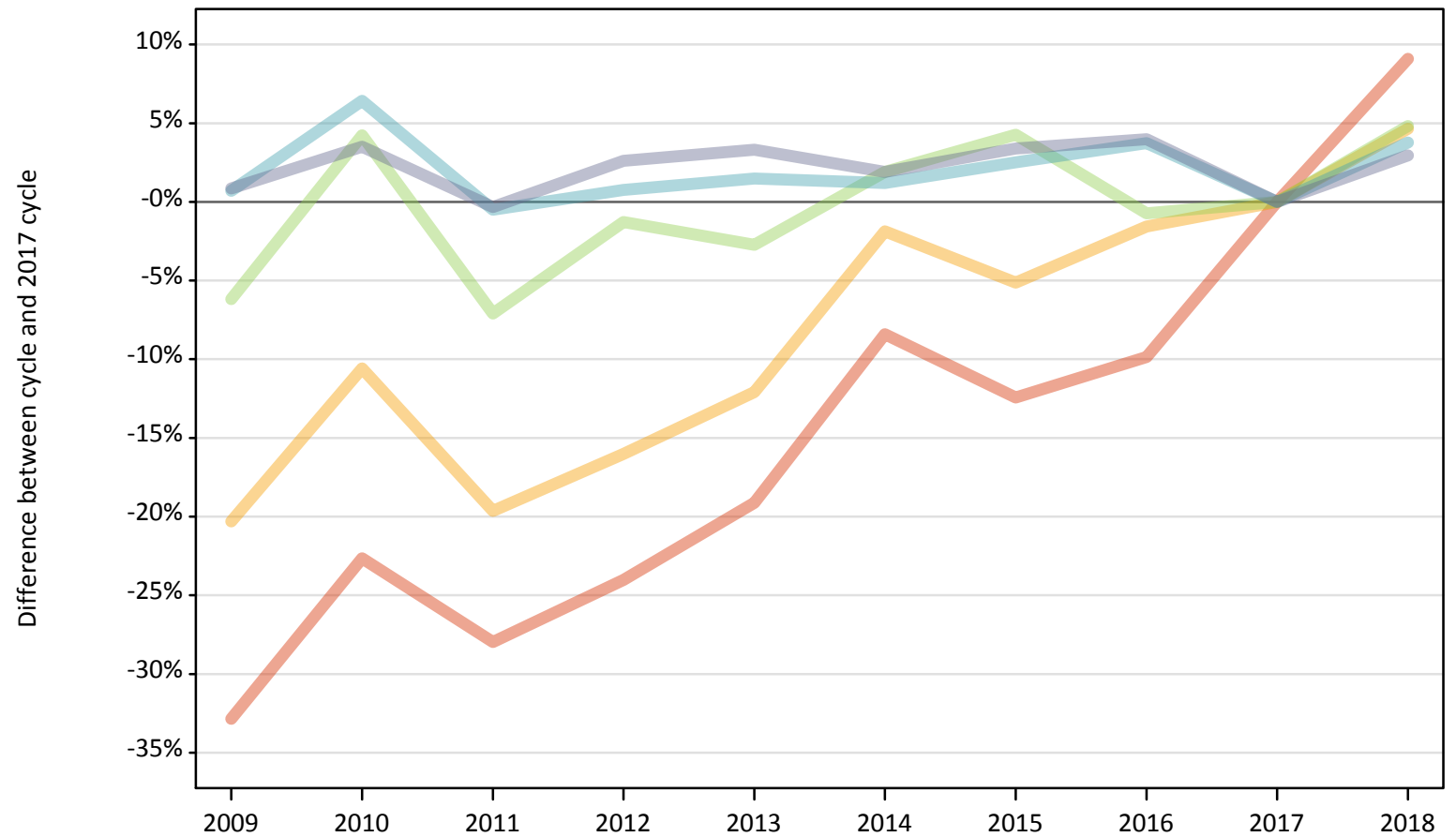
Applicant Status	SIMD16	2009	2010	2011	2012	2013	2014	2015	2016	2017	2018
Placed	Quintile 1	-52%	-38%	-39%	-36%	-32%	-24%	-16%	-11%	0%	5%
	Quintile 2	-40%	-29%	-30%	-28%	-24%	-17%	-9%	-3%	0%	3%
	Quintile 3	-27%	-18%	-22%	-20%	-19%	-14%	-4%	0%	0%	3%
	Quintile 4	-21%	-16%	-17%	-16%	-15%	-13%	-3%	1%	0%	4%
	Quintile 5	-17%	-14%	-14%	-13%	-11%	-11%	-3%	2%	0%	5%

Note: The percentage change is not recorded in the above table for groups with fewer than 10 placed applicants in that cycle or in the 2017 cycle.

J.4 Placed 18 year old applicants from Scotland by SIMD16 quintile: SQA results day

Placed 18 year old applicants: change relative to 2017 cycle totals

- Quintile 1
- Quintile 2
- Quintile 3
- Quintile 4
- Quintile 5



Note: The percentage change is not plotted in the above chart for groups with fewer than 30 placed applicants in any one cycle.

J.5 Placed 18 year old applicants from Scotland by SIMD16 quintile: SQA results day

Applicant Status	SIMD16	2009	2010	2011	2012	2013	2014	2015	2016	2017	2018
Placed	Quintile 1	780	900	840	890	940	1,070	1,020	1,050	1,170	1,270
	Quintile 2	1,320	1,480	1,330	1,390	1,460	1,620	1,570	1,630	1,660	1,730
	Quintile 3	2,060	2,290	2,040	2,170	2,140	2,240	2,290	2,180	2,200	2,310
	Quintile 4	3,040	3,210	3,010	3,040	3,070	3,060	3,100	3,130	3,020	3,130
	Quintile 5	4,410	4,530	4,360	4,490	4,520	4,460	4,520	4,550	4,370	4,500

J.6 Placed 18 year old applicants from Scotland by SIMD16 quintile: SQA results day

Placed 18 year old applicants: change relative to 2017 cycle totals

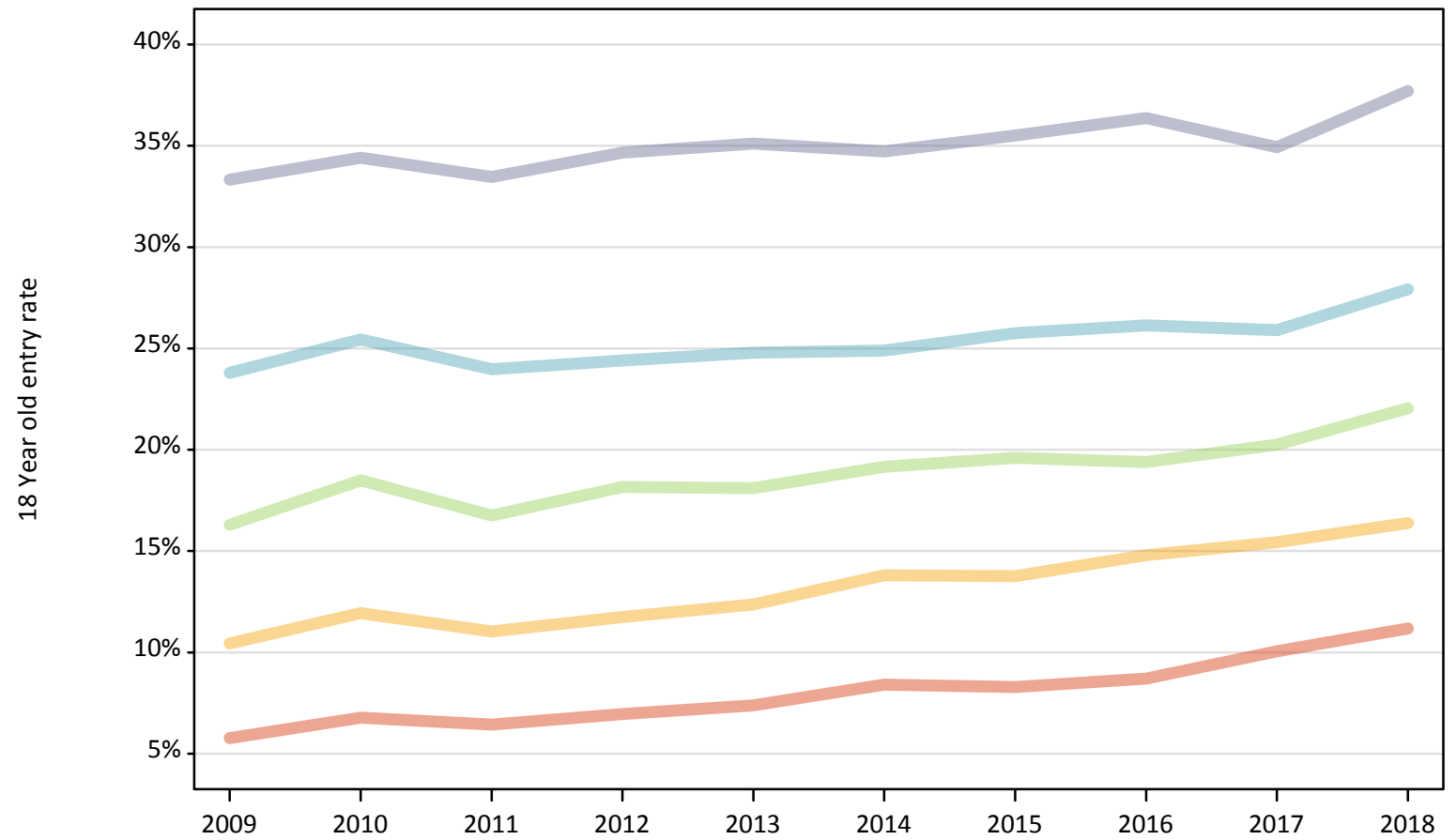
Applicant Status	SIMD16	2009	2010	2011	2012	2013	2014	2015	2016	2017	2018
Placed	Quintile 1	-33%	-23%	-28%	-24%	-19%	-8%	-12%	-10%	0%	9%
	Quintile 2	-20%	-11%	-20%	-16%	-12%	-2%	-5%	-2%	0%	5%
	Quintile 3	-6%	4%	-7%	-1%	-3%	2%	4%	-1%	0%	5%
	Quintile 4	1%	6%	-0%	1%	1%	1%	3%	4%	0%	4%
	Quintile 5	1%	3%	-0%	3%	3%	2%	3%	4%	0%	3%

Note: The percentage change is not recorded in the above table for groups with fewer than 10 placed applicants in that cycle or in the 2017 cycle.

J.7 Placed 18 year old applicants from Scotland by SIMD16 quintile: SQA results day

Placed 18 year old applicants: entry rate

- Quintile 1
- Quintile 2
- Quintile 3
- Quintile 4
- Quintile 5



J.8 Placed 18 year old applicants from Scotland by SIMD16 quintile: SQA results day

Placed 18 year old applicants: entry rate

Applicant Status	SIMD16	2009	2010	2011	2012	2013	2014	2015	2016	2017	2018
Placed	Quintile 1	5.8%	6.8%	6.4%	7.0%	7.4%	8.4%	8.3%	8.7%	10.1%	11.2%
	Quintile 2	10.4%	11.9%	11.0%	11.7%	12.4%	13.8%	13.8%	14.8%	15.4%	16.4%
	Quintile 3	16.3%	18.5%	16.8%	18.2%	18.1%	19.2%	19.6%	19.4%	20.3%	22.0%
	Quintile 4	23.8%	25.4%	24.0%	24.4%	24.8%	24.9%	25.8%	26.1%	25.9%	27.9%
	Quintile 5	33.3%	34.4%	33.5%	34.7%	35.1%	34.7%	35.5%	36.4%	34.9%	37.7%

J.9 Placed 18 year old applicants from Scotland by SIMD16 quintile: SQA results day

Placed 18 year old applicants: entry rate (indexed to 100 = Quintile 1)

Applicant Status	SIMD16	2009	2010	2011	2012	2013	2014	2015	2016	2017	2018
Placed	Quintile 1	100	100	100	100	100	100	100	100	100	100
	Quintile 2	181	176	171	169	167	164	166	170	153	147
	Quintile 3	282	273	260	261	245	228	237	223	201	197
	Quintile 4	412	375	372	351	336	296	311	301	257	250
	Quintile 5	577	507	519	498	475	413	428	418	347	337