

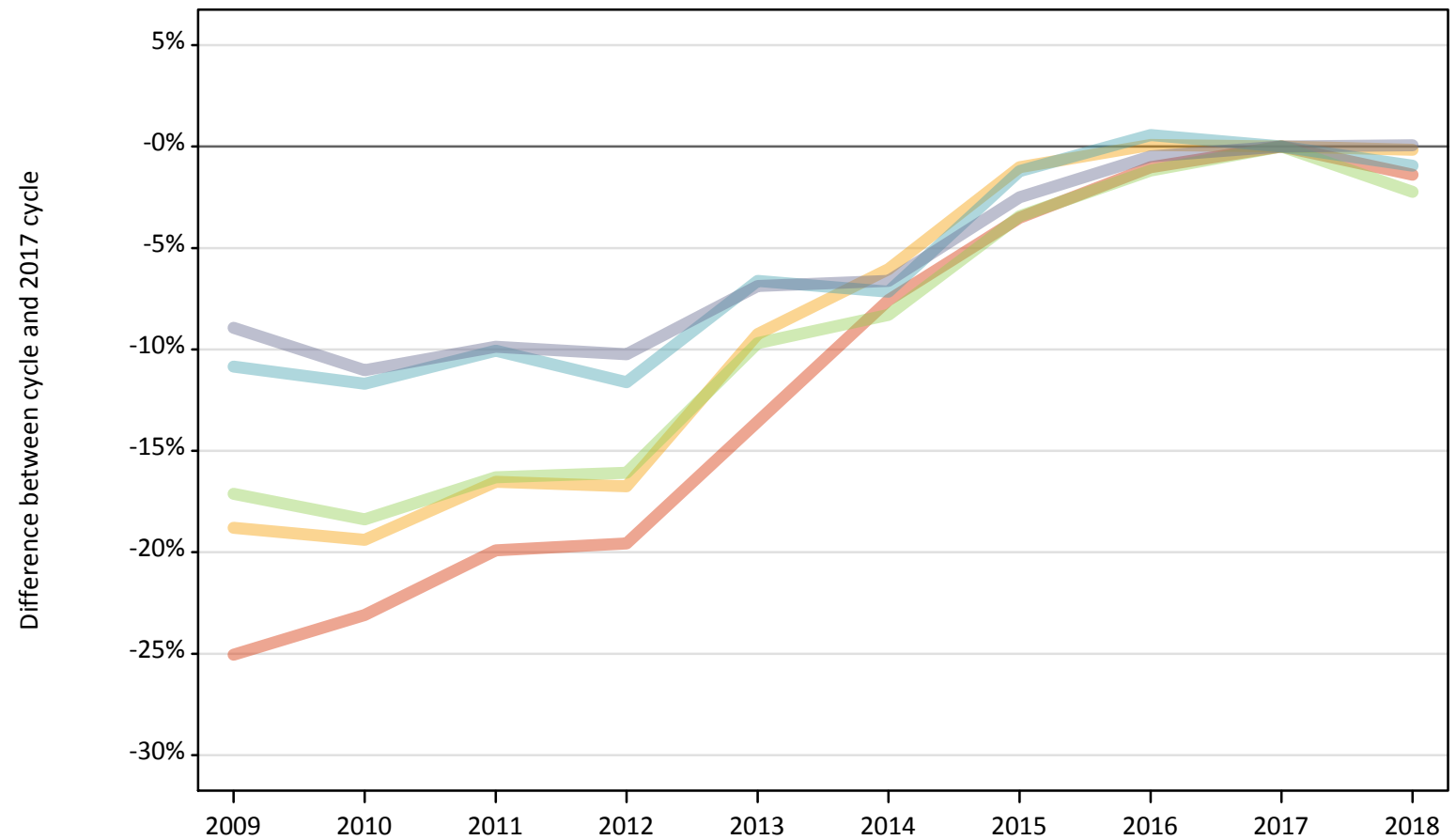
Daily Clearing Analysis: POLAR3

Analysis at 00:05 on Thursday 16 August 2018 (A level results day)

P.1 Placed 18 year old applicants from England by POLAR3 quintile: A level results day

Placed 18 year old applicants: change relative to 2017 cycle totals

- Quintile 1
- Quintile 2
- Quintile 3
- Quintile 4
- Quintile 5



Note: The percentage change is not plotted in the above chart for groups with fewer than 30 placed applicants in any one cycle.

P.2 Placed 18 year old applicants from England by POLAR3 quintile: A level results day

Applicant Status	POLAR3	2009	2010	2011	2012	2013	2014	2015	2016	2017	2018
Placed	Quintile 1	14,320	14,690	15,300	15,370	16,510	17,660	18,440	18,910	19,110	18,840
	Quintile 2	21,470	21,310	22,070	22,010	23,990	24,840	26,170	26,460	26,440	26,400
	Quintile 3	28,040	27,610	28,310	28,380	30,540	31,020	32,660	33,420	33,820	33,070
	Quintile 4	35,050	34,720	35,360	34,740	36,710	36,500	38,840	39,530	39,310	38,940
	Quintile 5	47,620	46,530	47,140	46,940	48,700	48,840	50,990	52,040	52,300	52,330

P.3 Placed 18 year old applicants from England by POLAR3 quintile: A level results day

Placed 18 year old applicants: change relative to 2017 cycle totals

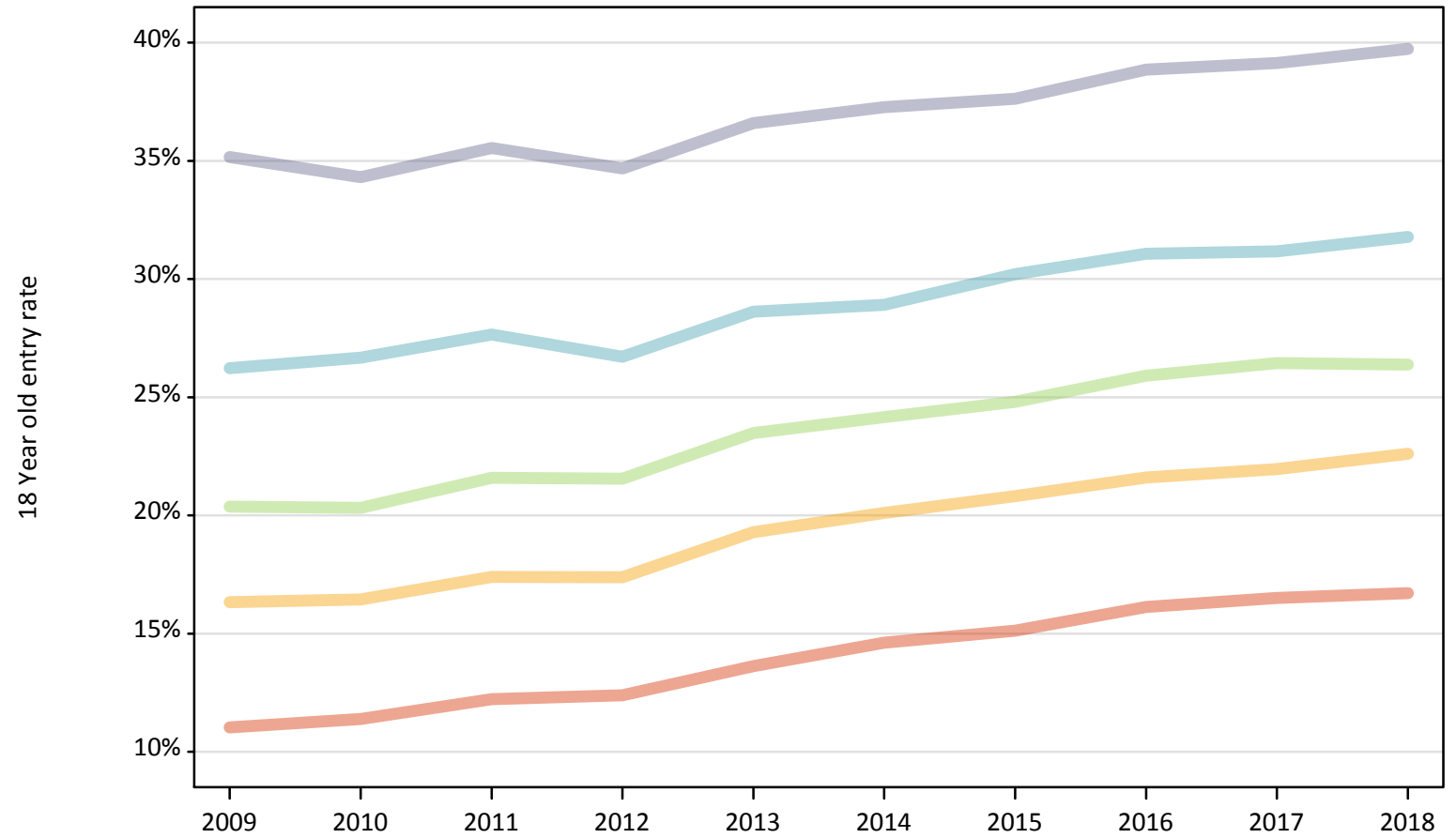
Applicant Status	POLAR3	2009	2010	2011	2012	2013	2014	2015	2016	2017	2018
Placed	Quintile 1	-25%	-23%	-20%	-20%	-14%	-8%	-4%	-1%	0%	-1%
	Quintile 2	-19%	-19%	-17%	-17%	-9%	-6%	-1%	0%	0%	-0%
	Quintile 3	-17%	-18%	-16%	-16%	-10%	-8%	-3%	-1%	0%	-2%
	Quintile 4	-11%	-12%	-10%	-12%	-7%	-7%	-1%	1%	0%	-1%
	Quintile 5	-9%	-11%	-10%	-10%	-7%	-7%	-2%	-0%	0%	0%

Note: The percentage change is not recorded in the above table for groups with fewer than 10 placed applicants in that cycle or in the 2017 cycle.

P.4 Placed 18 year old applicants from England by POLAR3 quintile: A level results day

Placed 18 year old applicants: entry rate

- Quintile 1
- Quintile 2
- Quintile 3
- Quintile 4
- Quintile 5



P.5 Placed 18 year old applicants from England by POLAR3 quintile: A level results day

Placed 18 year old applicants: entry rate

Applicant Status	POLAR3	2009	2010	2011	2012	2013	2014	2015	2016	2017	2018
Placed	Quintile 1	11.0%	11.4%	12.2%	12.4%	13.6%	14.6%	15.1%	16.1%	16.5%	16.7%
	Quintile 2	16.3%	16.4%	17.4%	17.4%	19.3%	20.1%	20.8%	21.6%	22.0%	22.6%
	Quintile 3	20.4%	20.3%	21.6%	21.5%	23.5%	24.2%	24.8%	25.9%	26.4%	26.4%
	Quintile 4	26.2%	26.7%	27.7%	26.7%	28.6%	28.9%	30.2%	31.1%	31.2%	31.8%
	Quintile 5	35.2%	34.3%	35.5%	34.7%	36.6%	37.3%	37.6%	38.9%	39.1%	39.7%

P.6 Placed 18 year old applicants from England by POLAR3 quintile: A level results day

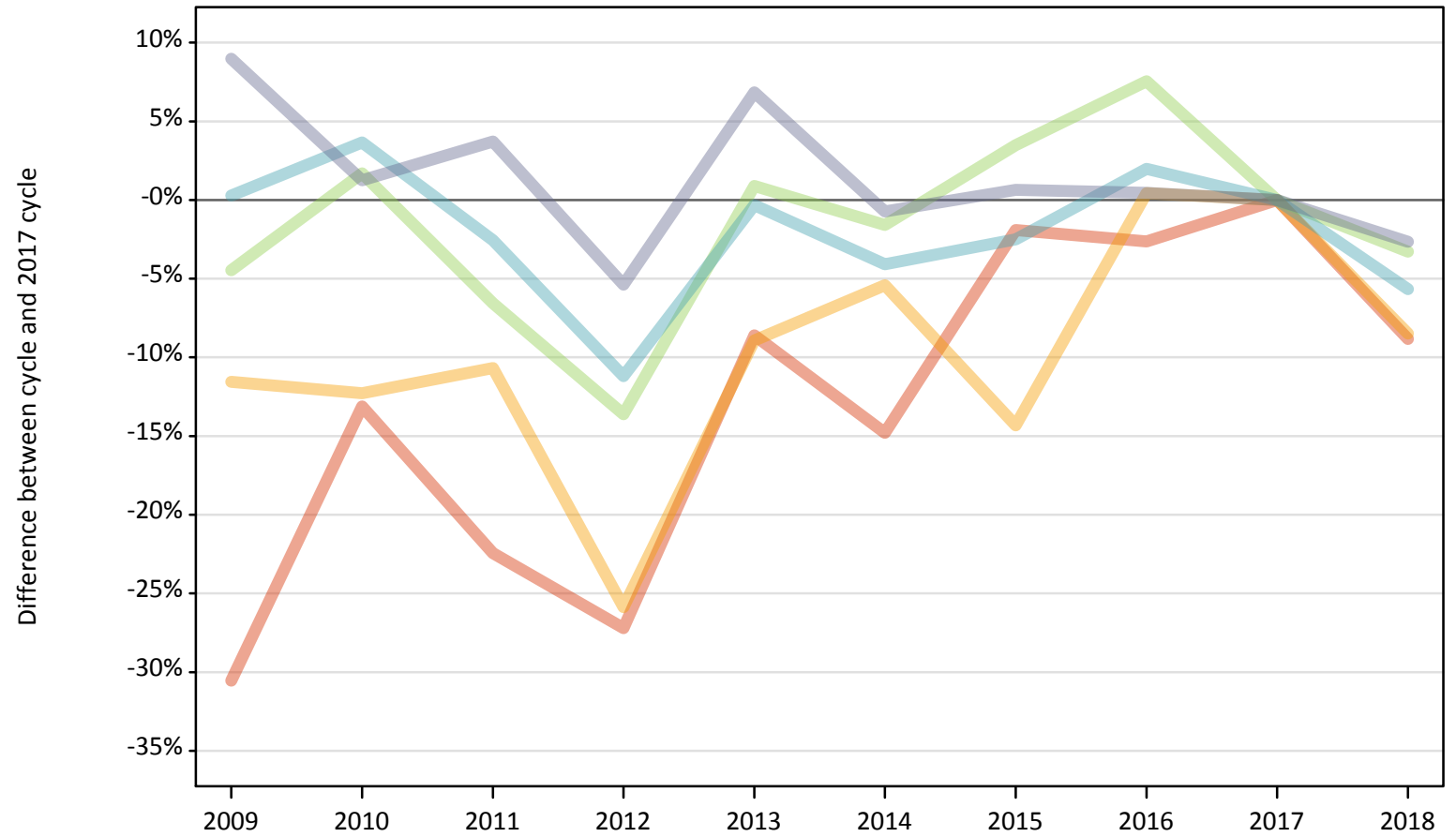
Placed 18 year old applicants: entry rate (indexed to 100 = Quintile 1)

Applicant Status	POLAR3	2009	2010	2011	2012	2013	2014	2015	2016	2017	2018
Placed	Quintile 1	100	100	100	100	100	100	100	100	100	100
	Quintile 2	148	144	142	140	142	138	138	134	133	135
	Quintile 3	185	178	177	174	172	165	164	161	160	158
	Quintile 4	238	234	226	216	210	198	200	193	189	190
	Quintile 5	319	301	291	280	269	255	249	241	237	238

P.7 Placed 18 year old applicants from Northern Ireland by POLAR3 quintile: A level results day

Placed 18 year old applicants: change relative to 2017 cycle totals

- Quintile 1
- Quintile 2
- Quintile 3
- Quintile 4
- Quintile 5



Note: The percentage change is not plotted in the above chart for groups with fewer than 30 placed applicants in any one cycle.

P.8 Placed 18 year old applicants from Northern Ireland by POLAR3 quintile: A level results day

Applicant Status	POLAR3	2009	2010	2011	2012	2013	2014	2015	2016	2017	2018
Placed	Quintile 1	290	360	330	310	380	360	410	410	420	380
	Quintile 2	610	600	610	510	620	650	590	690	680	630
	Quintile 3	960	1,020	940	870	1,020	990	1,040	1,080	1,010	970
	Quintile 4	2,090	2,160	2,030	1,850	2,070	2,000	2,030	2,120	2,080	1,960
	Quintile 5	2,880	2,680	2,740	2,500	2,820	2,620	2,660	2,660	2,640	2,570

P.9 Placed 18 year old applicants from Northern Ireland by POLAR3 quintile: A level results day

Placed 18 year old applicants: change relative to 2017 cycle totals

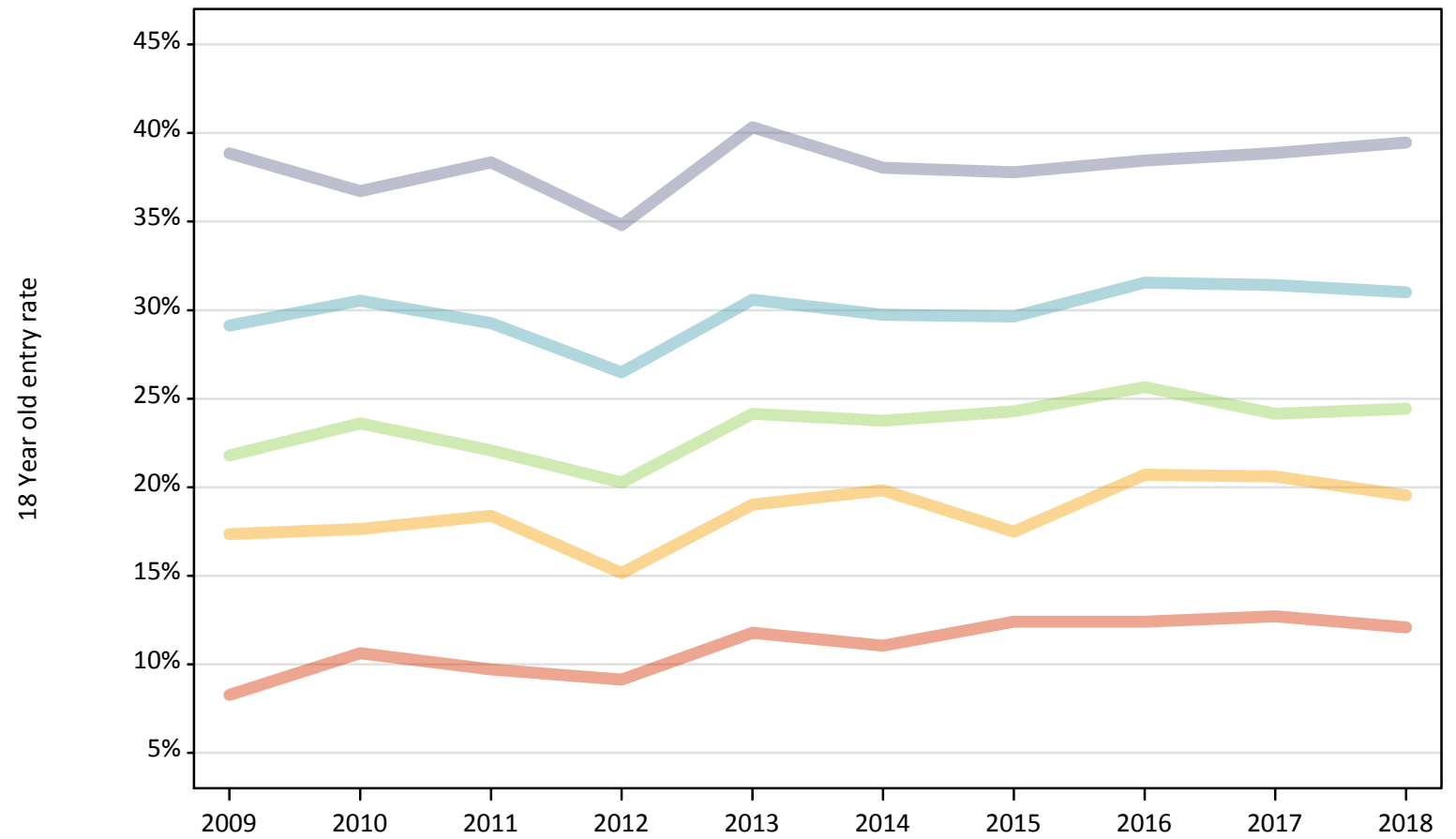
Applicant Status	POLAR3	2009	2010	2011	2012	2013	2014	2015	2016	2017	2018
Placed	Quintile 1	-31%	-13%	-22%	-27%	-9%	-15%	-2%	-3%	0%	-9%
	Quintile 2	-12%	-12%	-11%	-26%	-9%	-5%	-14%	0%	0%	-8%
	Quintile 3	-4%	2%	-7%	-14%	1%	-2%	3%	8%	0%	-3%
	Quintile 4	0%	4%	-3%	-11%	-0%	-4%	-3%	2%	0%	-6%
	Quintile 5	9%	1%	4%	-5%	7%	-1%	1%	0%	0%	-3%

Note: The percentage change is not recorded in the above table for groups with fewer than 10 placed applicants in that cycle or in the 2017 cycle.

P.10 Placed 18 year old applicants from Northern Ireland by POLAR3 quintile: A level results day

Placed 18 year old applicants: entry rate

- Quintile 1
- Quintile 2
- Quintile 3
- Quintile 4
- Quintile 5



P.11 Placed 18 year old applicants from Northern Ireland by POLAR3 quintile: A level results day

Placed 18 year old applicants: entry rate

Applicant Status	POLAR3	2009	2010	2011	2012	2013	2014	2015	2016	2017	2018
Placed	Quintile 1	8.3%	10.6%	9.7%	9.1%	11.8%	11.0%	12.4%	12.4%	12.7%	12.1%
	Quintile 2	17.3%	17.6%	18.4%	15.1%	19.0%	19.8%	17.5%	20.7%	20.6%	19.5%
	Quintile 3	21.8%	23.6%	22.1%	20.3%	24.1%	23.8%	24.3%	25.7%	24.1%	24.4%
	Quintile 4	29.1%	30.5%	29.3%	26.5%	30.6%	29.7%	29.6%	31.5%	31.4%	31.0%
	Quintile 5	38.8%	36.7%	38.3%	34.8%	40.3%	38.0%	37.8%	38.5%	38.9%	39.5%

P.12 Placed 18 year old applicants from Northern Ireland by POLAR3 quintile: A level results day

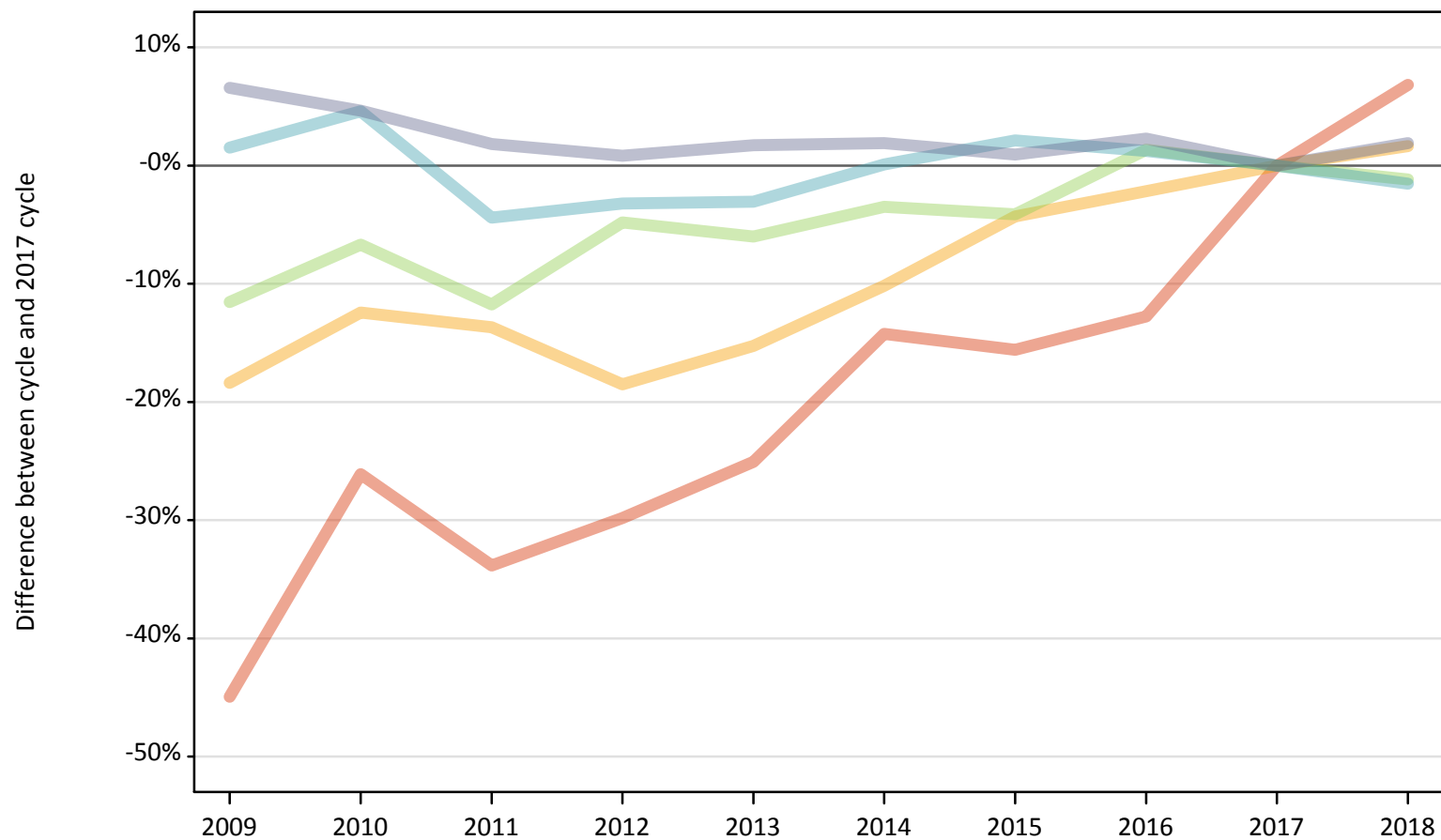
Placed 18 year old applicants: entry rate (indexed to 100 = Quintile 1)

Applicant Status	POLAR3	2009	2010	2011	2012	2013	2014	2015	2016	2017	2018
Placed	Quintile 1	100	100	100	100	100	100	100	100	100	100
	Quintile 2	210	166	189	166	161	180	141	167	162	162
	Quintile 3	263	222	227	222	205	215	196	207	190	202
	Quintile 4	352	288	301	290	260	269	239	254	247	257
	Quintile 5	470	346	395	381	342	344	305	310	306	326

P.13 Placed 18 year old applicants from Scotland by POLAR3 quintile: A level results day

Placed 18 year old applicants: change relative to 2017 cycle totals

- Quintile 1
- Quintile 2
- Quintile 3
- Quintile 4
- Quintile 5



Note: The percentage change is not plotted in the above chart for groups with fewer than 30 placed applicants in any one cycle.

P.14 Placed 18 year old applicants from Scotland by POLAR3 quintile: A level results day

Applicant Status	POLAR3	2009	2010	2011	2012	2013	2014	2015	2016	2017	2018
Placed	Quintile 1	370	500	450	470	510	580	570	590	670	720
	Quintile 2	1,240	1,330	1,310	1,230	1,280	1,360	1,450	1,480	1,510	1,540
	Quintile 3	1,970	2,080	1,970	2,120	2,090	2,150	2,140	2,260	2,230	2,200
	Quintile 4	3,360	3,460	3,160	3,200	3,210	3,310	3,380	3,350	3,310	3,260
	Quintile 5	6,940	6,820	6,630	6,570	6,630	6,640	6,580	6,660	6,520	6,640

P.15 Placed 18 year old applicants from Scotland by POLAR3 quintile: A level results day

Placed 18 year old applicants: change relative to 2017 cycle totals

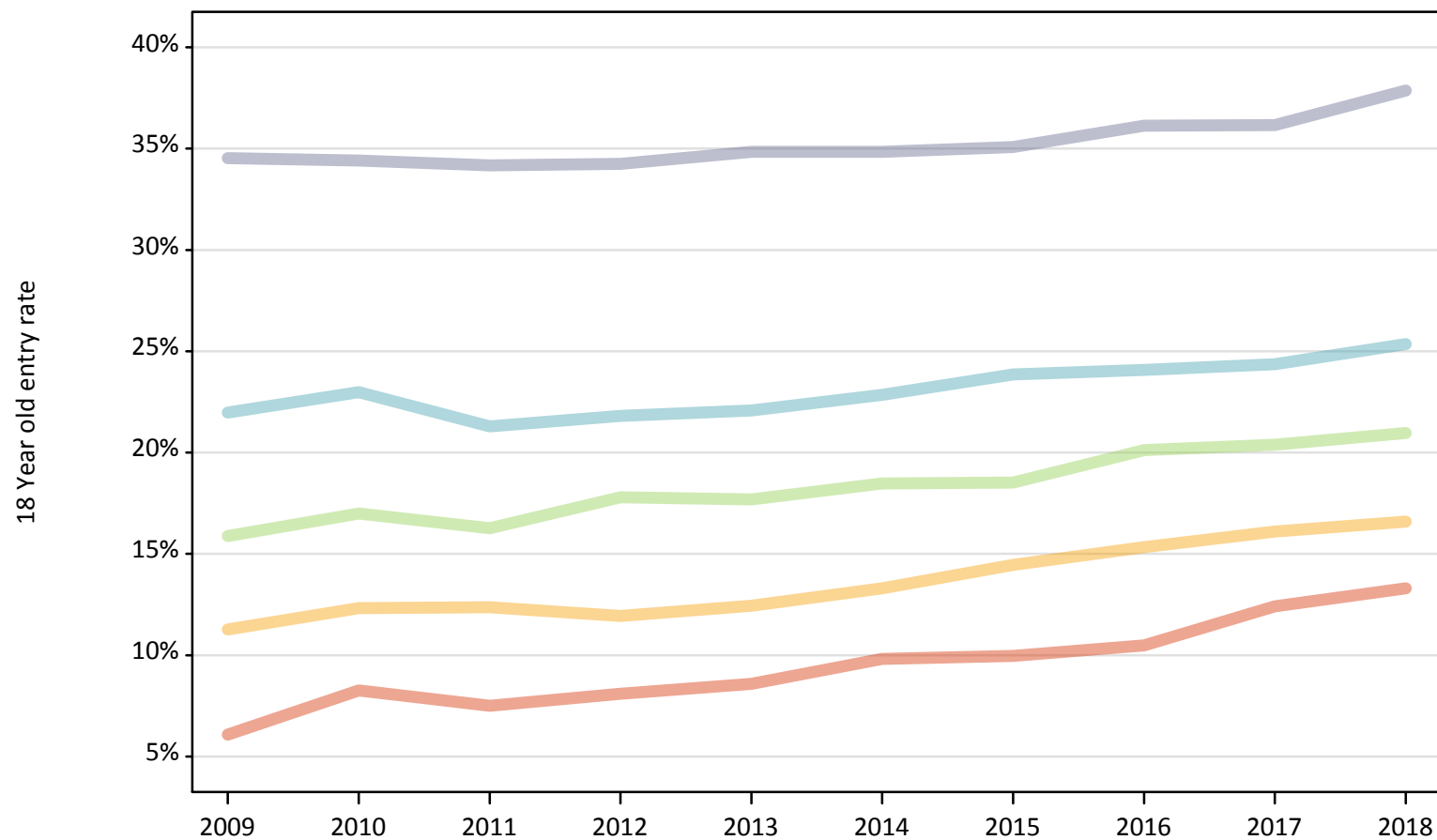
Applicant Status	POLAR3	2009	2010	2011	2012	2013	2014	2015	2016	2017	2018
Placed	Quintile 1	-45%	-26%	-34%	-30%	-25%	-14%	-16%	-13%	0%	7%
	Quintile 2	-18%	-12%	-14%	-19%	-15%	-10%	-4%	-2%	0%	2%
	Quintile 3	-12%	-7%	-12%	-5%	-6%	-4%	-4%	1%	0%	-1%
	Quintile 4	2%	5%	-4%	-3%	-3%	0%	2%	1%	0%	-2%
	Quintile 5	7%	5%	2%	1%	2%	2%	1%	2%	0%	2%

Note: The percentage change is not recorded in the above table for groups with fewer than 10 placed applicants in that cycle or in the 2017 cycle.

P.16 Placed 18 year old applicants from Scotland by POLAR3 quintile: A level results day

Placed 18 year old applicants: entry rate

- Quintile 1
- Quintile 2
- Quintile 3
- Quintile 4
- Quintile 5



P.17 Placed 18 year old applicants from Scotland by POLAR3 quintile: A level results day

Placed 18 year old applicants: entry rate

Applicant Status	POLAR3	2009	2010	2011	2012	2013	2014	2015	2016	2017	2018
Placed	Quintile 1	6.1%	8.3%	7.5%	8.1%	8.6%	9.8%	10.0%	10.5%	12.4%	13.3%
	Quintile 2	11.3%	12.3%	12.4%	11.9%	12.4%	13.3%	14.5%	15.3%	16.1%	16.6%
	Quintile 3	15.9%	17.0%	16.3%	17.8%	17.7%	18.5%	18.5%	20.1%	20.4%	21.0%
	Quintile 4	22.0%	23.0%	21.3%	21.8%	22.1%	22.9%	23.9%	24.1%	24.4%	25.4%
	Quintile 5	34.5%	34.4%	34.2%	34.3%	34.8%	34.8%	35.1%	36.1%	36.2%	37.9%

P.18 Placed 18 year old applicants from Scotland by POLAR3 quintile: A level results day

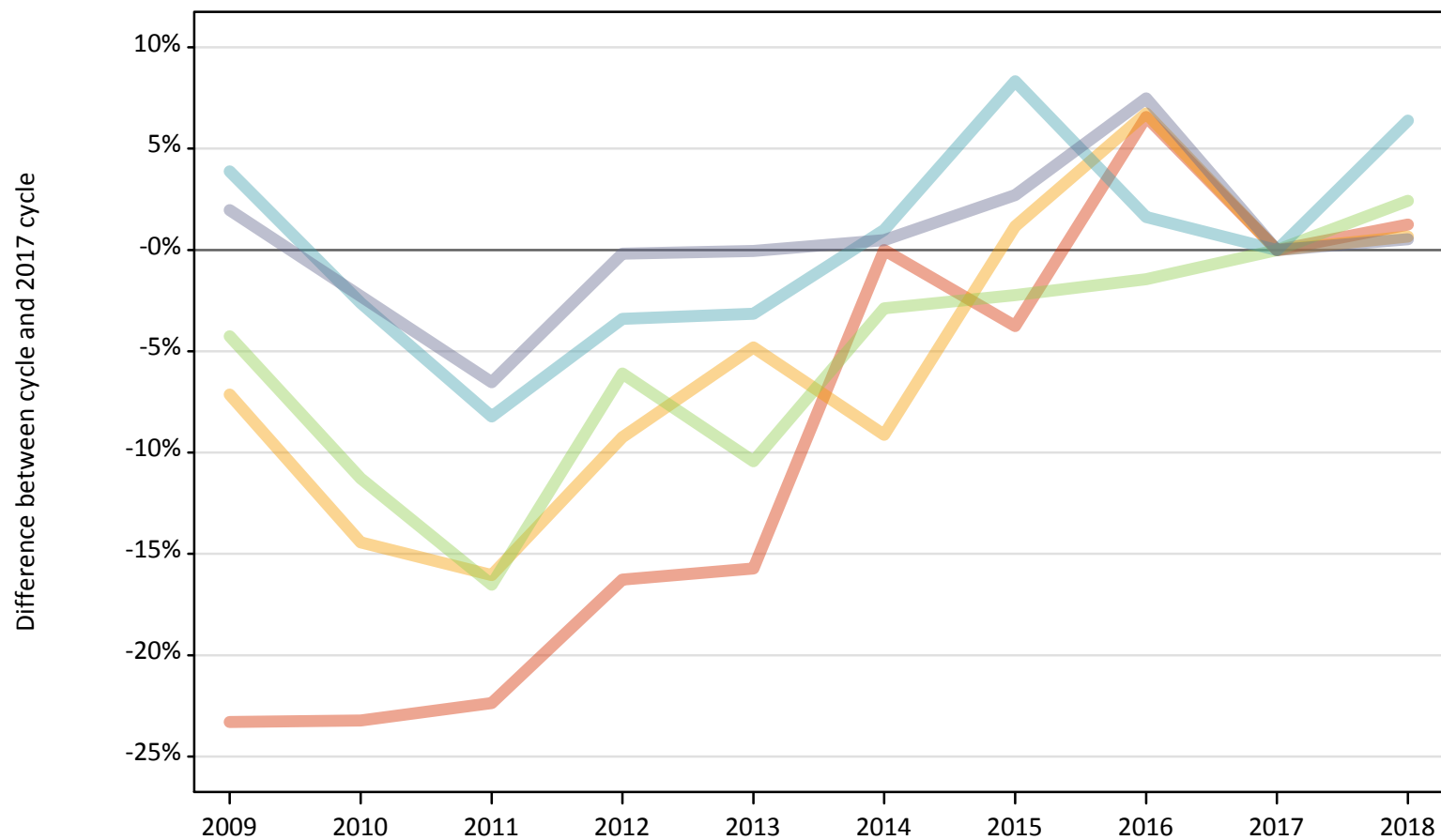
Placed 18 year old applicants: entry rate (indexed to 100 = Quintile 1)

Applicant Status	POLAR3	2009	2010	2011	2012	2013	2014	2015	2016	2017	2018
Placed	Quintile 1	100	100	100	100	100	100	100	100	100	100
	Quintile 2	185	149	165	147	145	135	145	146	130	125
	Quintile 3	261	206	217	220	206	188	186	192	164	158
	Quintile 4	361	278	284	269	257	233	239	230	196	191
	Quintile 5	567	417	456	423	406	355	352	345	291	285

P.19 Placed 18 year old applicants from Wales by POLAR3 quintile: A level results day

Placed 18 year old applicants: change relative to 2017 cycle totals

- Quintile 1
- Quintile 2
- Quintile 3
- Quintile 4
- Quintile 5



Note: The percentage change is not plotted in the above chart for groups with fewer than 30 placed applicants in any one cycle.

P.20 Placed 18 year old applicants from Wales by POLAR3 quintile: A level results day

Applicant Status	POLAR3	2009	2010	2011	2012	2013	2014	2015	2016	2017	2018
Placed	Quintile 1	980	980	990	1,070	1,080	1,280	1,230	1,360	1,280	1,300
	Quintile 2	1,680	1,550	1,520	1,640	1,720	1,640	1,830	1,930	1,810	1,820
	Quintile 3	1,460	1,350	1,270	1,430	1,370	1,480	1,490	1,500	1,530	1,560
	Quintile 4	1,980	1,860	1,750	1,850	1,850	1,930	2,070	1,940	1,910	2,030
	Quintile 5	2,330	2,230	2,130	2,280	2,280	2,290	2,350	2,450	2,280	2,300

P.21 Placed 18 year old applicants from Wales by POLAR3 quintile: A level results day

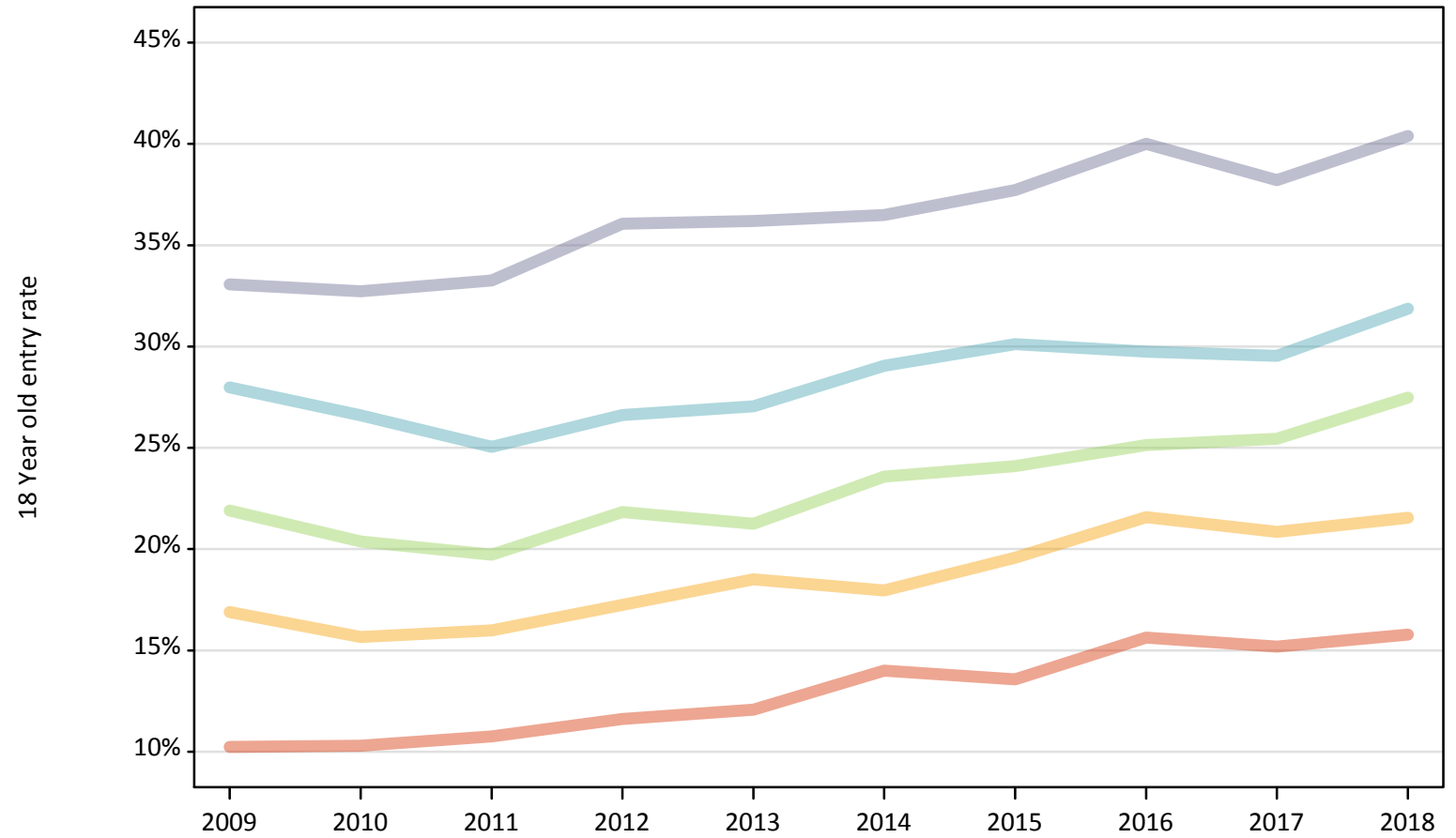
Placed 18 year old applicants: change relative to 2017 cycle totals

Applicant Status	POLAR3	2009	2010	2011	2012	2013	2014	2015	2016	2017	2018
Placed	Quintile 1	-23%	-23%	-22%	-16%	-16%	0%	-4%	7%	0%	1%
	Quintile 2	-7%	-14%	-16%	-9%	-5%	-9%	1%	7%	0%	1%
	Quintile 3	-4%	-11%	-17%	-6%	-10%	-3%	-2%	-1%	0%	2%
	Quintile 4	4%	-3%	-8%	-3%	-3%	1%	8%	2%	0%	6%
	Quintile 5	2%	-2%	-7%	-0%	-0%	0%	3%	7%	0%	1%

Note: The percentage change is not recorded in the above table for groups with fewer than 10 placed applicants in that cycle or in the 2017 cycle.

P.22 Placed 18 year old applicants from Wales by POLAR3 quintile: A level results day
Placed 18 year old applicants: entry rate

- Quintile 1
- Quintile 2
- Quintile 3
- Quintile 4
- Quintile 5



P.23 Placed 18 year old applicants from Wales by POLAR3 quintile: A level results day

Placed 18 year old applicants: entry rate

Applicant Status	POLAR3	2009	2010	2011	2012	2013	2014	2015	2016	2017	2018
Placed	Quintile 1	10.2%	10.3%	10.8%	11.6%	12.1%	14.0%	13.6%	15.6%	15.2%	15.8%
	Quintile 2	16.9%	15.7%	16.0%	17.2%	18.5%	18.0%	19.6%	21.6%	20.9%	21.5%
	Quintile 3	21.9%	20.4%	19.7%	21.8%	21.2%	23.6%	24.1%	25.1%	25.5%	27.5%
	Quintile 4	28.0%	26.6%	25.0%	26.6%	27.0%	29.0%	30.1%	29.7%	29.5%	31.9%
	Quintile 5	33.1%	32.7%	33.3%	36.1%	36.2%	36.5%	37.7%	40.0%	38.2%	40.4%

P.24 Placed 18 year old applicants from Wales by POLAR3 quintile: A level results day

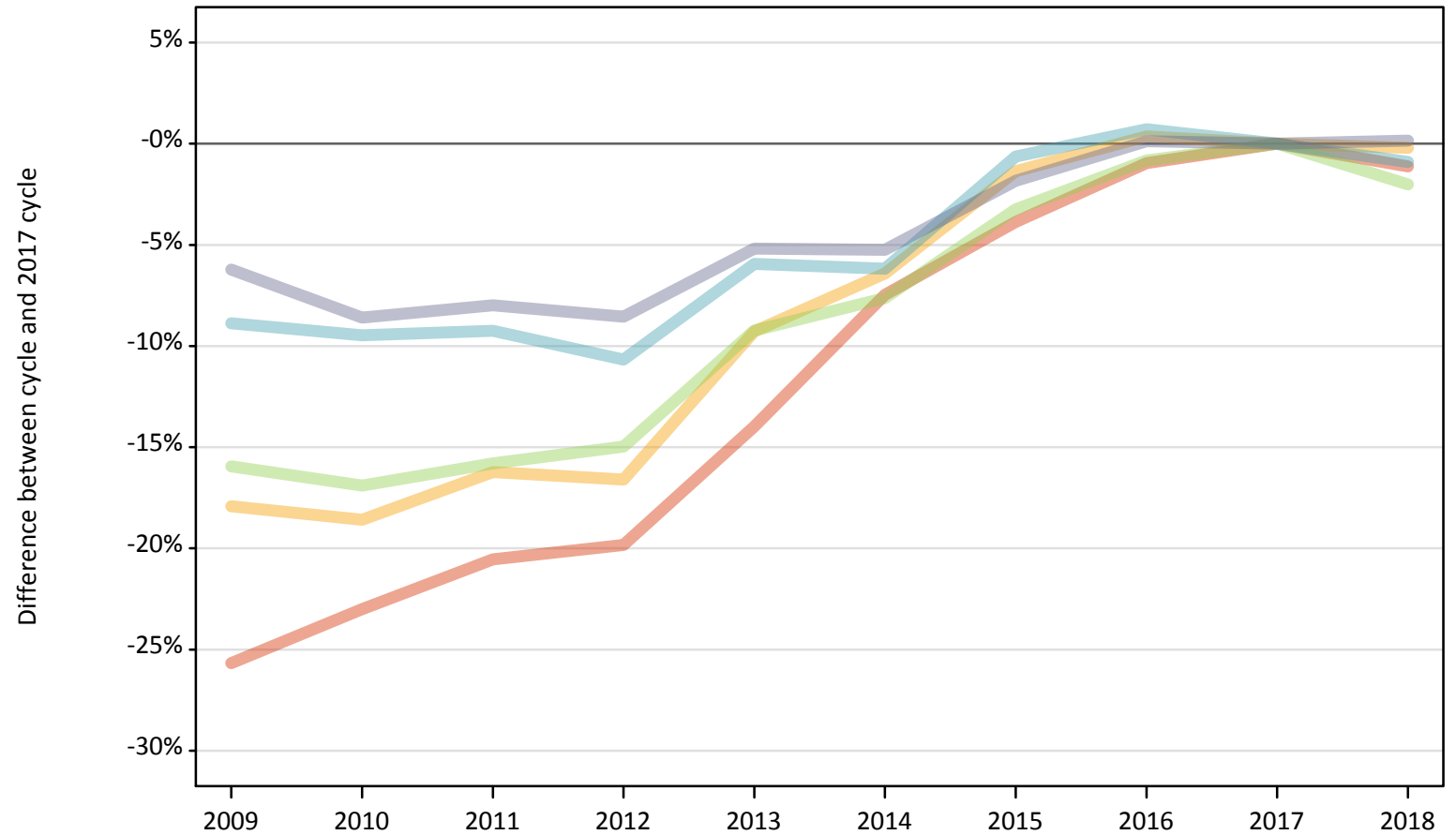
Placed 18 year old applicants: entry rate (indexed to 100 = Quintile 1)

Applicant Status	POLAR3	2009	2010	2011	2012	2013	2014	2015	2016	2017	2018
Placed	Quintile 1	100	100	100	100	100	100	100	100	100	100
	Quintile 2	165	152	149	149	153	128	144	138	137	137
	Quintile 3	214	198	183	188	176	169	178	161	168	174
	Quintile 4	273	259	233	229	224	208	222	190	195	202
	Quintile 5	323	318	309	311	300	261	278	256	252	256

P.25 Placed 18 year old applicants from the UK by POLAR3 quintile: A level results day

Placed 18 year old applicants: change relative to 2017 cycle totals

- Quintile 1
- Quintile 2
- Quintile 3
- Quintile 4
- Quintile 5



Note: The percentage change is not plotted in the above chart for groups with fewer than 30 placed applicants in any one cycle.

P.26 Placed 18 year old applicants from the UK by POLAR3 quintile: A level results day

Applicant Status	POLAR3	2009	2010	2011	2012	2013	2014	2015	2016	2017	2018
Placed	Quintile 1	15,970	16,540	17,070	17,220	18,480	19,880	20,650	21,270	21,480	21,240
	Quintile 2	24,990	24,780	25,510	25,390	27,620	28,490	30,030	30,560	30,440	30,380
	Quintile 3	32,430	32,060	32,490	32,810	35,020	35,640	37,330	38,270	38,580	37,800
	Quintile 4	42,480	42,200	42,300	41,640	43,840	43,740	46,310	46,950	46,610	46,190
	Quintile 5	59,770	58,260	58,650	58,290	60,430	60,390	62,570	63,810	63,740	63,840

P.27 Placed 18 year old applicants from the UK by POLAR3 quintile: A level results day

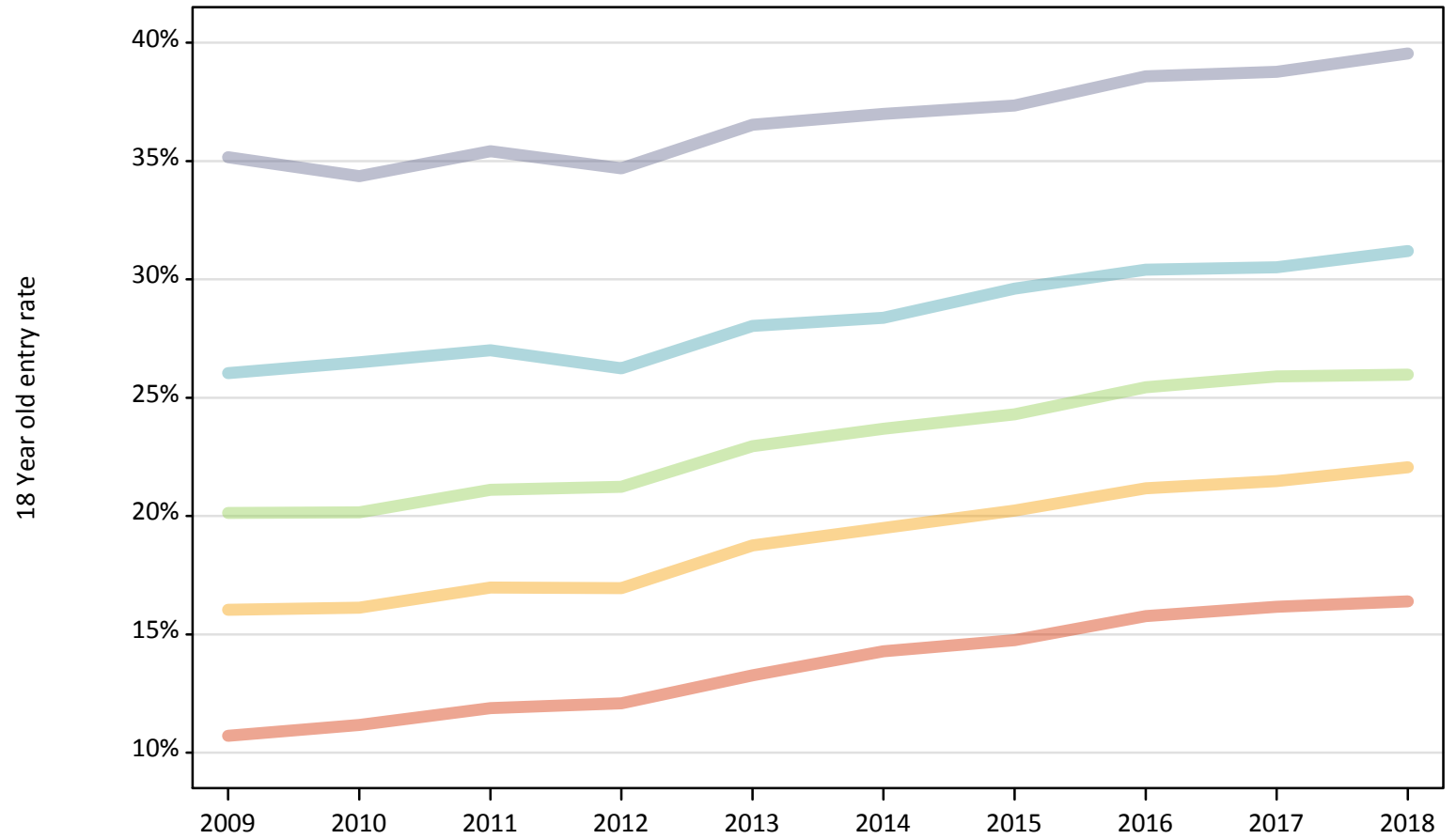
Placed 18 year old applicants: change relative to 2017 cycle totals

Applicant Status	POLAR3	2009	2010	2011	2012	2013	2014	2015	2016	2017	2018
Placed	Quintile 1	-26%	-23%	-21%	-20%	-14%	-7%	-4%	-1%	0%	-1%
	Quintile 2	-18%	-19%	-16%	-17%	-9%	-6%	-1%	0%	0%	-0%
	Quintile 3	-16%	-17%	-16%	-15%	-9%	-8%	-3%	-1%	0%	-2%
	Quintile 4	-9%	-9%	-9%	-11%	-6%	-6%	-1%	1%	0%	-1%
	Quintile 5	-6%	-9%	-8%	-9%	-5%	-5%	-2%	0%	0%	0%

Note: The percentage change is not recorded in the above table for groups with fewer than 10 placed applicants in that cycle or in the 2017 cycle.

P.28 Placed 18 year old applicants from the UK by POLAR3 quintile: A level results day
Placed 18 year old applicants: entry rate

- Quintile 1
- Quintile 2
- Quintile 3
- Quintile 4
- Quintile 5



P.29 Placed 18 year old applicants from the UK by POLAR3 quintile: A level results day

Placed 18 year old applicants: entry rate

Applicant Status	POLAR3	2009	2010	2011	2012	2013	2014	2015	2016	2017	2018
Placed	Quintile 1	10.7%	11.2%	11.9%	12.1%	13.3%	14.3%	14.7%	15.8%	16.2%	16.4%
	Quintile 2	16.0%	16.1%	17.0%	16.9%	18.8%	19.5%	20.2%	21.2%	21.5%	22.1%
	Quintile 3	20.1%	20.2%	21.1%	21.2%	23.0%	23.7%	24.3%	25.4%	25.9%	26.0%
	Quintile 4	26.0%	26.5%	27.0%	26.2%	28.0%	28.4%	29.6%	30.4%	30.5%	31.2%
	Quintile 5	35.2%	34.4%	35.4%	34.7%	36.5%	37.0%	37.3%	38.6%	38.8%	39.5%

P.30 Placed 18 year old applicants from the UK by POLAR3 quintile: A level results day

Placed 18 year old applicants: entry rate (indexed to 100 = Quintile 1)

Applicant Status	POLAR3	2009	2010	2011	2012	2013	2014	2015	2016	2017	2018
Placed	Quintile 1	100	100	100	100	100	100	100	100	100	100
	Quintile 2	150	144	143	140	141	136	137	134	133	135
	Quintile 3	188	180	178	176	173	166	165	161	160	158
	Quintile 4	243	237	227	217	211	199	201	193	189	190
	Quintile 5	328	308	298	287	276	259	253	245	240	241