

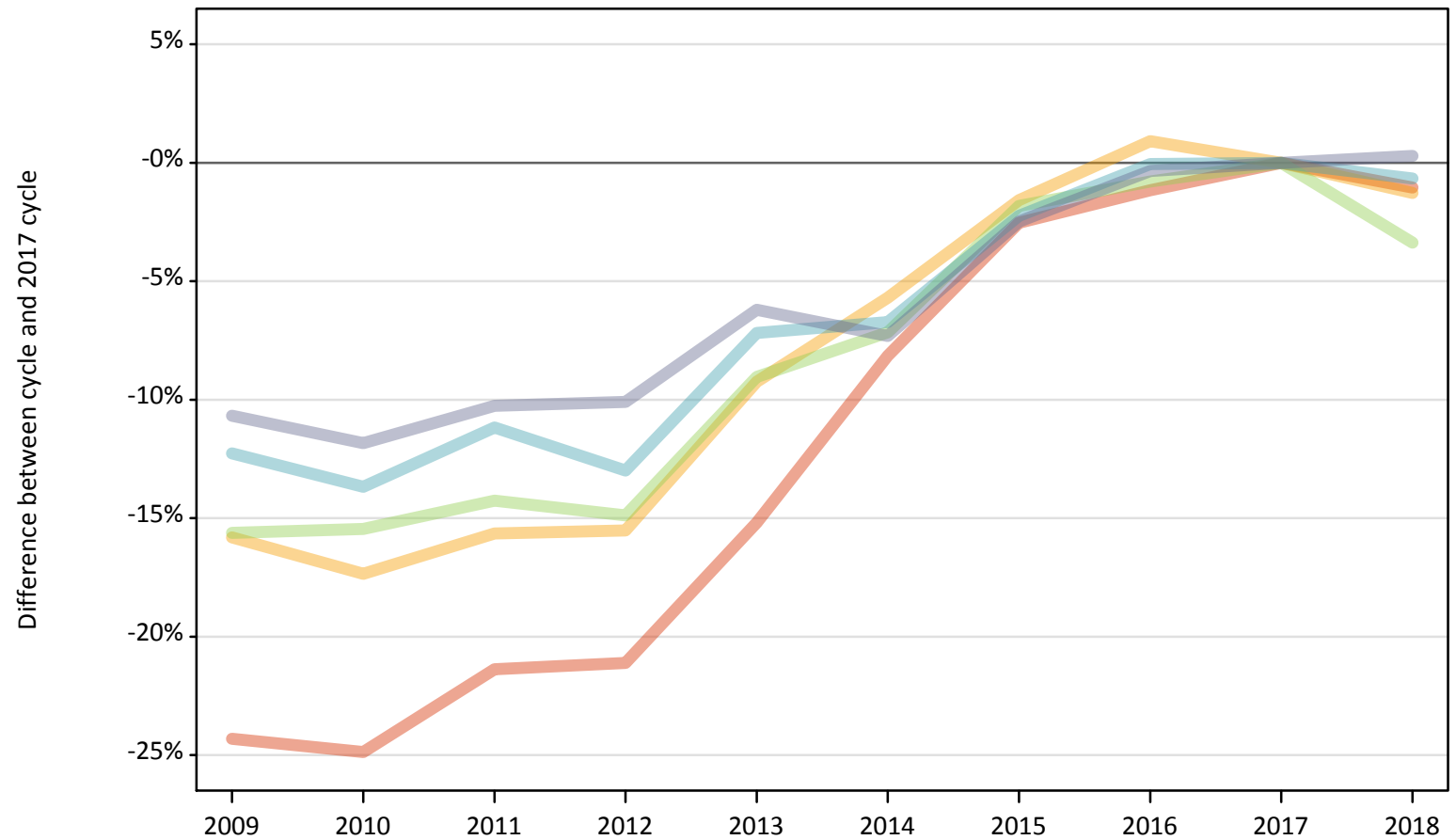
# Daily Clearing Analysis: POLAR4

Analysis at 00:05 on Thursday 16 August 2018 (A level results day)

P.1 Placed 18 year old applicants from England by POLAR4 quintile: A level results day

Placed 18 year old applicants: change relative to 2017 cycle totals

- Quintile 1
- Quintile 2
- Quintile 3
- Quintile 4
- Quintile 5



Note: The percentage change is not plotted in the above chart for groups with fewer than 30 placed applicants in any one cycle.

### P.2 Placed 18 year old applicants from England by POLAR4 quintile: A level results day

Applicant Status	POLAR4	2009	2010	2011	2012	2013	2014	2015	2016	2017	2018
Placed	Quintile 1	14,070	13,960	14,610	14,660	15,760	17,070	18,120	18,370	18,590	18,390
	Quintile 2	21,850	21,450	21,890	21,920	23,550	24,470	25,540	26,190	25,950	25,620
	Quintile 3	27,090	27,140	27,530	27,330	29,200	29,810	31,520	31,850	32,110	31,020
	Quintile 4	34,030	33,490	34,460	33,760	36,010	36,190	37,930	38,780	38,800	38,540
	Quintile 5	49,460	48,820	49,690	49,780	51,930	51,320	53,990	55,180	55,370	55,530

### P.3 Placed 18 year old applicants from England by POLAR4 quintile: A level results day

Placed 18 year old applicants: change relative to 2017 cycle totals

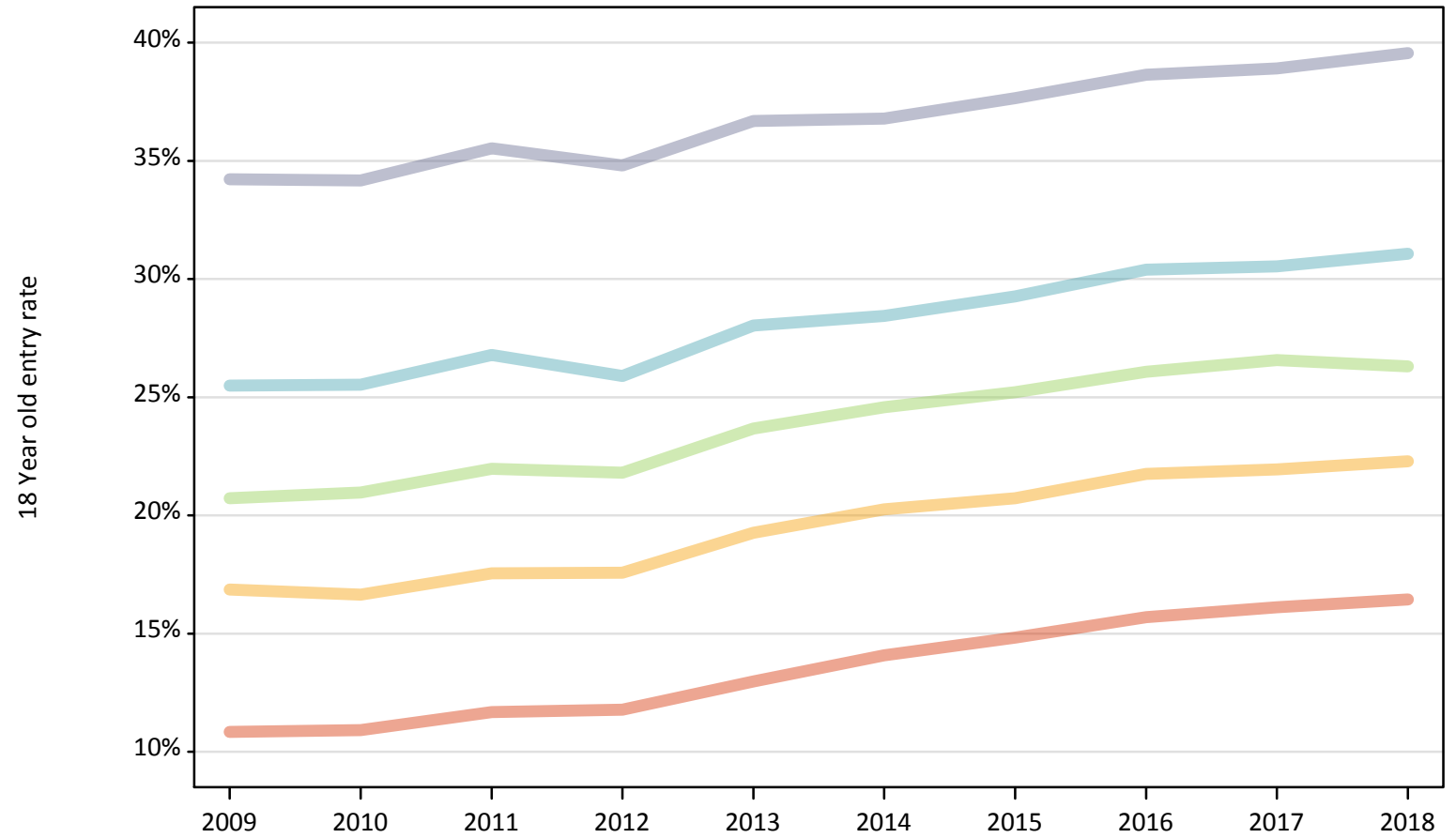
Applicant Status	POLAR4	2009	2010	2011	2012	2013	2014	2015	2016	2017	2018
Placed	Quintile 1	-24%	-25%	-21%	-21%	-15%	-8%	-3%	-1%	0%	-1%
	Quintile 2	-16%	-17%	-16%	-16%	-9%	-6%	-2%	1%	0%	-1%
	Quintile 3	-16%	-15%	-14%	-15%	-9%	-7%	-2%	-1%	0%	-3%
	Quintile 4	-12%	-14%	-11%	-13%	-7%	-7%	-2%	-0%	0%	-1%
	Quintile 5	-11%	-12%	-10%	-10%	-6%	-7%	-2%	-0%	0%	0%

Note: The percentage change is not recorded in the above table for groups with fewer than 10 placed applicants in that cycle or in the 2017 cycle.

## P.4 Placed 18 year old applicants from England by POLAR4 quintile: A level results day

Placed 18 year old applicants: entry rate

- Quintile 1
- Quintile 2
- Quintile 3
- Quintile 4
- Quintile 5



**P.5 Placed 18 year old applicants from England by POLAR4 quintile: A level results day**

Placed 18 year old applicants: entry rate

Applicant Status	POLAR4	2009	2010	2011	2012	2013	2014	2015	2016	2017	2018
Placed	Quintile 1	10.8%	10.9%	11.7%	11.8%	13.0%	14.1%	14.8%	15.7%	16.1%	16.4%
	Quintile 2	16.9%	16.6%	17.5%	17.6%	19.3%	20.2%	20.7%	21.8%	21.9%	22.3%
	Quintile 3	20.7%	21.0%	22.0%	21.8%	23.7%	24.6%	25.2%	26.1%	26.6%	26.3%
	Quintile 4	25.5%	25.5%	26.8%	25.9%	28.0%	28.4%	29.3%	30.4%	30.5%	31.1%
	Quintile 5	34.2%	34.2%	35.5%	34.8%	36.7%	36.8%	37.6%	38.6%	38.9%	39.6%

**P.6 Placed 18 year old applicants from England by POLAR4 quintile: A level results day**

Placed 18 year old applicants: entry rate (indexed to 100 = Quintile 1)

Applicant Status	POLAR4	2009	2010	2011	2012	2013	2014	2015	2016	2017	2018
Placed	Quintile 1	100	100	100	100	100	100	100	100	100	100
	Quintile 2	156	153	150	149	148	144	140	139	136	136
	Quintile 3	191	192	188	185	182	174	170	166	165	160
	Quintile 4	235	234	230	220	216	202	197	194	190	189
	Quintile 5	316	313	304	295	283	261	254	246	242	241

## P.7 Placed 18 year old applicants from Northern Ireland by POLAR4 quintile: A level results day

Placed 18 year old applicants: change relative to 2017 cycle totals

- Quintile 1
- Quintile 2
- Quintile 3
- Quintile 4
- Quintile 5



Note: The percentage change is not plotted in the above chart for groups with fewer than 30 placed applicants in any one cycle.

**P.8 Placed 18 year old applicants from Northern Ireland by POLAR4 quintile: A level results day**

Applicant Status	POLAR4	2009	2010	2011	2012	2013	2014	2015	2016	2017	2018
Placed	Quintile 1	430	490	440	400	480	550	570	590	600	590
	Quintile 2	550	540	470	450	540	520	540	640	640	570
	Quintile 3	960	1,020	1,000	860	990	1,090	1,090	1,080	1,170	1,090
	Quintile 4	1,750	1,710	1,730	1,540	1,780	1,660	1,740	1,810	1,670	1,640
	Quintile 5	3,140	3,060	3,000	2,780	3,130	2,790	2,790	2,820	2,740	2,630

**P.9 Placed 18 year old applicants from Northern Ireland by POLAR4 quintile: A level results day**

Placed 18 year old applicants: change relative to 2017 cycle totals

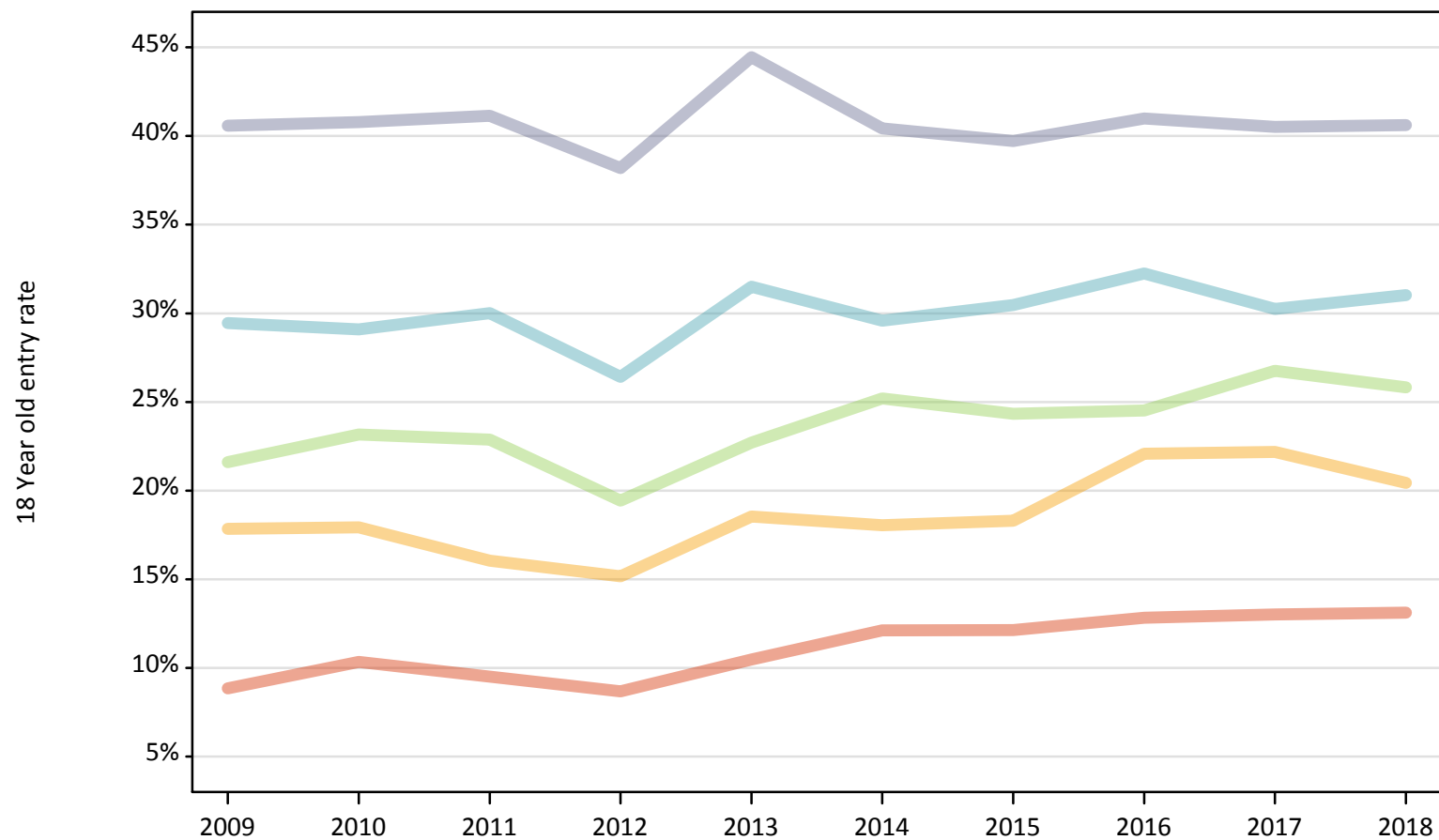
Applicant Status	POLAR4	2009	2010	2011	2012	2013	2014	2015	2016	2017	2018
Placed	Quintile 1	-30%	-19%	-27%	-33%	-21%	-9%	-6%	-2%	0%	-3%
	Quintile 2	-15%	-15%	-26%	-30%	-16%	-19%	-15%	0%	0%	-12%
	Quintile 3	-18%	-13%	-15%	-27%	-16%	-7%	-7%	-8%	0%	-7%
	Quintile 4	5%	2%	4%	-8%	7%	-1%	4%	8%	0%	-2%
	Quintile 5	15%	12%	10%	1%	14%	2%	2%	3%	0%	-4%

Note: The percentage change is not recorded in the above table for groups with fewer than 10 placed applicants in that cycle or in the 2017 cycle.

## P.10 Placed 18 year old applicants from Northern Ireland by POLAR4 quintile: A level results day

Placed 18 year old applicants: entry rate

- Quintile 1
- Quintile 2
- Quintile 3
- Quintile 4
- Quintile 5



**P.11 Placed 18 year old applicants from Northern Ireland by POLAR4 quintile: A level results day**

Placed 18 year old applicants: entry rate

Applicant Status	POLAR4	2009	2010	2011	2012	2013	2014	2015	2016	2017	2018
Placed	Quintile 1	8.8%	10.3%	9.5%	8.7%	10.5%	12.1%	12.1%	12.8%	13.0%	13.1%
	Quintile 2	17.8%	17.9%	16.0%	15.2%	18.5%	18.0%	18.3%	22.1%	22.2%	20.4%
	Quintile 3	21.6%	23.2%	22.9%	19.4%	22.7%	25.2%	24.3%	24.5%	26.8%	25.8%
	Quintile 4	29.5%	29.1%	30.0%	26.4%	31.5%	29.6%	30.5%	32.3%	30.3%	31.0%
	Quintile 5	40.6%	40.8%	41.1%	38.2%	44.4%	40.4%	39.7%	41.0%	40.5%	40.6%

**P.12 Placed 18 year old applicants from Northern Ireland by POLAR4 quintile: A level results day**

Placed 18 year old applicants: entry rate (indexed to 100 = Quintile 1)

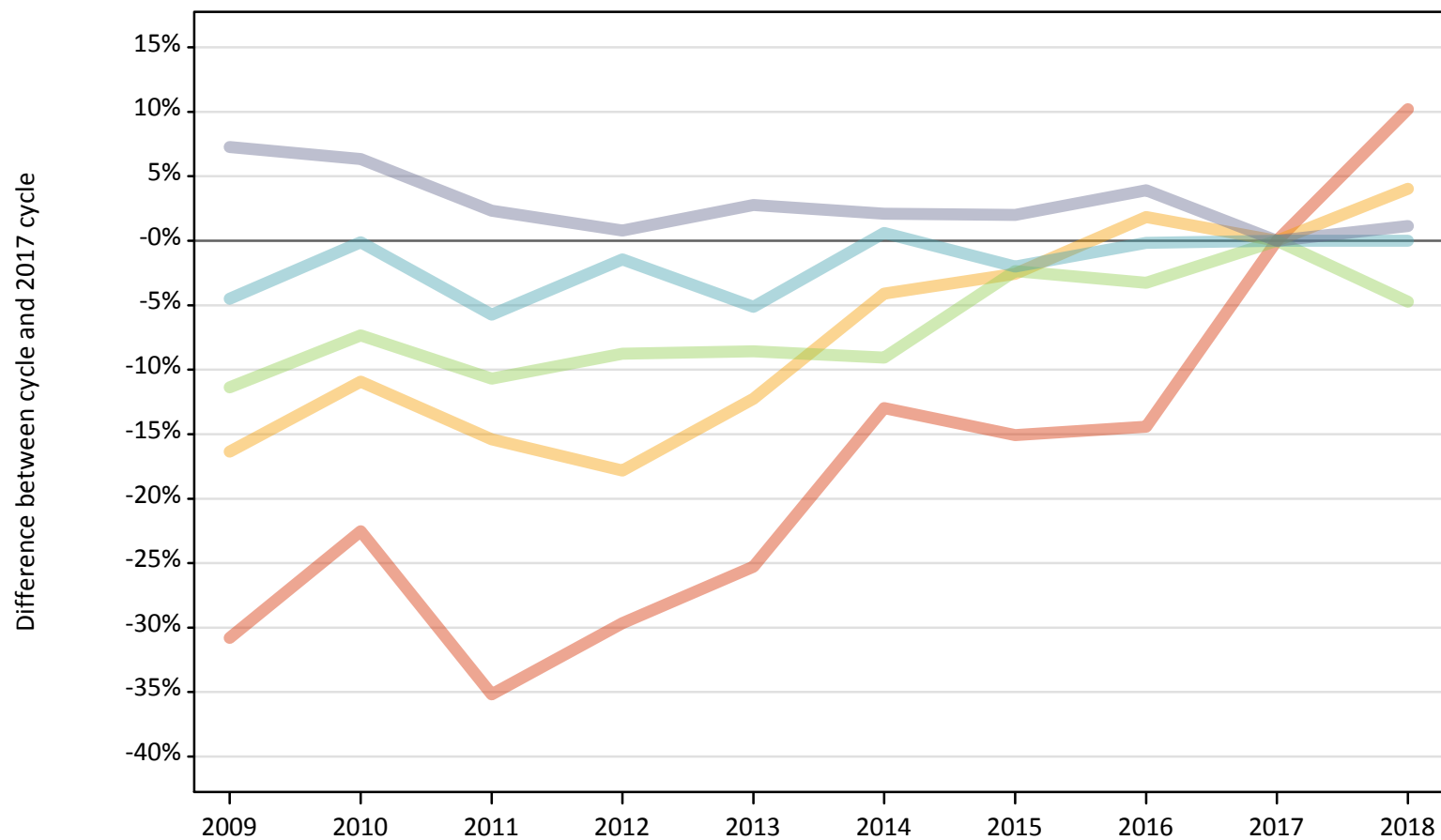
Applicant Status	POLAR4	2009	2010	2011	2012	2013	2014	2015	2016	2017	2018
Placed	Quintile 1	100	100	100	100	100	100	100	100	100	100
	Quintile 2	202	173	169	175	177	149	151	172	170	156
	Quintile 3	244	224	241	224	217	208	200	191	206	197
	Quintile 4	333	281	316	304	301	244	251	251	233	237
	Quintile 5	459	394	433	440	424	334	327	320	311	310



### P.13 Placed 18 year old applicants from Scotland by POLAR4 quintile: A level results day

Placed 18 year old applicants: change relative to 2017 cycle totals

- Quintile 1
- Quintile 2
- Quintile 3
- Quintile 4
- Quintile 5



Note: The percentage change is not plotted in the above chart for groups with fewer than 30 placed applicants in any one cycle.

**P.14 Placed 18 year old applicants from Scotland by POLAR4 quintile: A level results day**

Applicant Status	POLAR4	2009	2010	2011	2012	2013	2014	2015	2016	2017	2018
Placed	Quintile 1	430	480	400	430	460	540	520	530	620	680
	Quintile 2	1,140	1,210	1,150	1,120	1,200	1,310	1,330	1,390	1,360	1,420
	Quintile 3	2,070	2,160	2,080	2,130	2,130	2,120	2,280	2,250	2,330	2,220
	Quintile 4	3,150	3,300	3,110	3,250	3,130	3,320	3,240	3,300	3,300	3,300
	Quintile 5	7,100	7,030	6,770	6,670	6,800	6,750	6,750	6,870	6,610	6,690

**P.15 Placed 18 year old applicants from Scotland by POLAR4 quintile: A level results day**

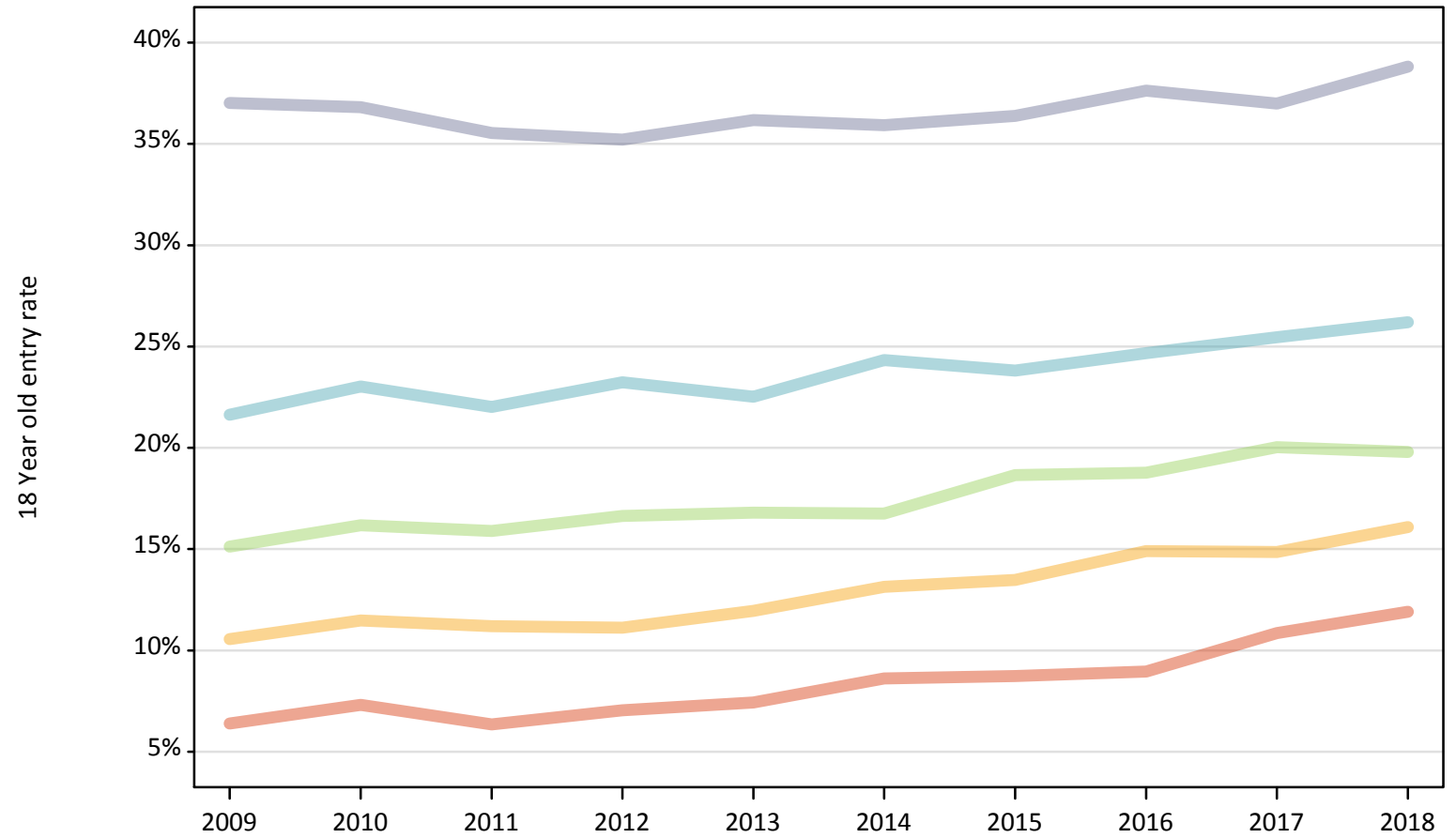
Placed 18 year old applicants: change relative to 2017 cycle totals

Applicant Status	POLAR4	2009	2010	2011	2012	2013	2014	2015	2016	2017	2018
Placed	Quintile 1	-31%	-23%	-35%	-30%	-25%	-13%	-15%	-14%	0%	10%
	Quintile 2	-16%	-11%	-15%	-18%	-12%	-4%	-3%	2%	0%	4%
	Quintile 3	-11%	-7%	-11%	-9%	-9%	-9%	-2%	-3%	0%	-5%
	Quintile 4	-4%	-0%	-6%	-1%	-5%	1%	-2%	-0%	0%	0%
	Quintile 5	7%	6%	2%	1%	3%	2%	2%	4%	0%	1%

Note: The percentage change is not recorded in the above table for groups with fewer than 10 placed applicants in that cycle or in the 2017 cycle.

**P.16 Placed 18 year old applicants from Scotland by POLAR4 quintile: A level results day**  
Placed 18 year old applicants: entry rate

- Quintile 1
- Quintile 2
- Quintile 3
- Quintile 4
- Quintile 5



**P.17 Placed 18 year old applicants from Scotland by POLAR4 quintile: A level results day**

Placed 18 year old applicants: entry rate

Applicant Status	POLAR4	2009	2010	2011	2012	2013	2014	2015	2016	2017	2018
Placed	Quintile 1	6.4%	7.3%	6.3%	7.0%	7.4%	8.6%	8.7%	9.0%	10.8%	11.9%
	Quintile 2	10.6%	11.5%	11.2%	11.1%	12.0%	13.1%	13.5%	14.9%	14.9%	16.1%
	Quintile 3	15.1%	16.2%	15.9%	16.6%	16.8%	16.8%	18.7%	18.8%	20.0%	19.8%
	Quintile 4	21.6%	23.0%	22.0%	23.2%	22.5%	24.3%	23.8%	24.7%	25.5%	26.2%
	Quintile 5	37.0%	36.8%	35.5%	35.2%	36.2%	35.9%	36.4%	37.6%	37.0%	38.8%

**P.18 Placed 18 year old applicants from Scotland by POLAR4 quintile: A level results day**

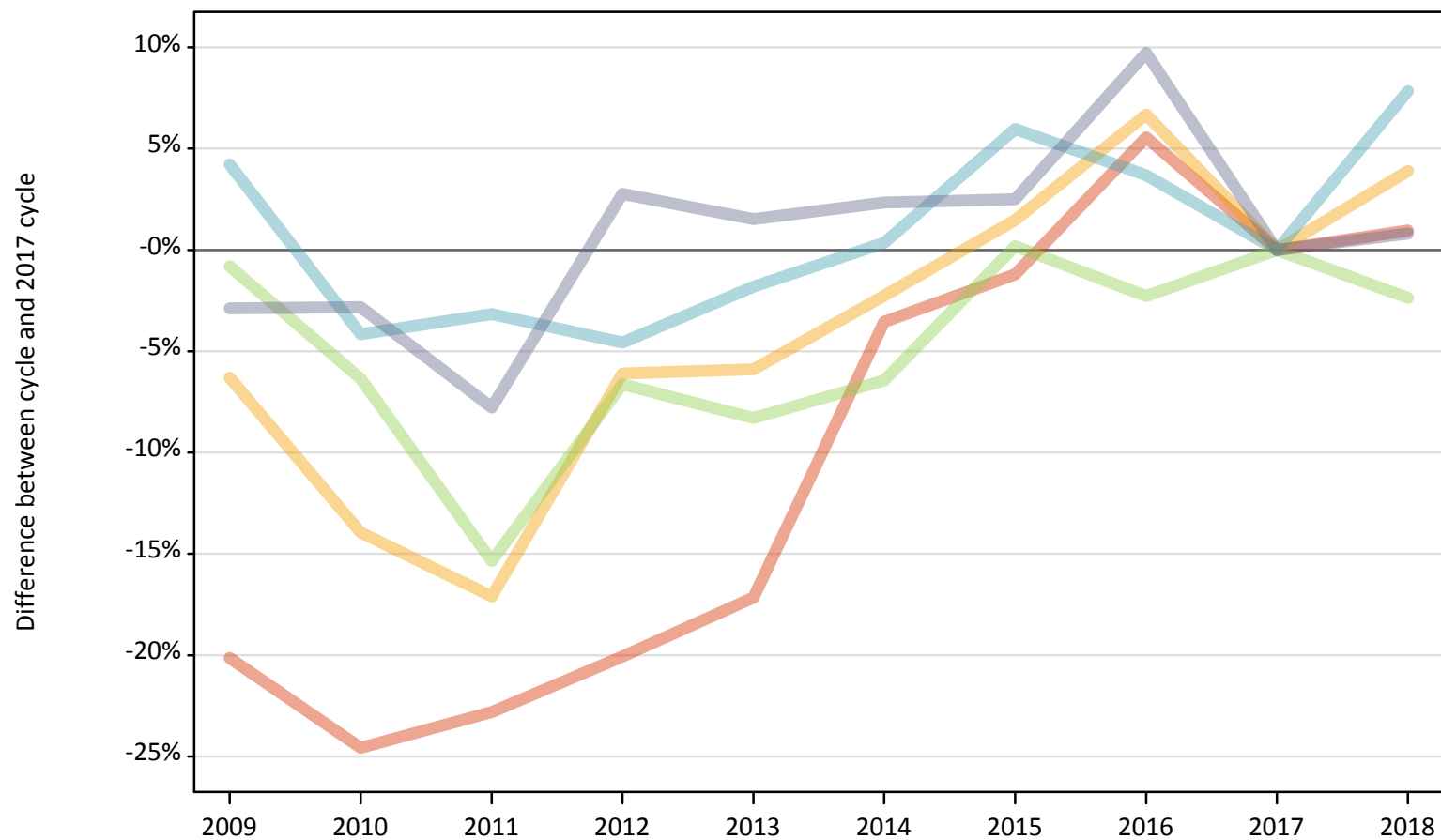
Placed 18 year old applicants: entry rate (indexed to 100 = Quintile 1)

Applicant Status	POLAR4	2009	2010	2011	2012	2013	2014	2015	2016	2017	2018
Placed	Quintile 1	100	100	100	100	100	100	100	100	100	100
	Quintile 2	165	157	177	158	161	152	154	166	137	135
	Quintile 3	236	221	251	236	226	194	214	209	185	166
	Quintile 4	338	315	347	330	303	282	273	275	235	220
	Quintile 5	579	503	560	500	487	417	417	420	341	326

### P.19 Placed 18 year old applicants from Wales by POLAR4 quintile: A level results day

Placed 18 year old applicants: change relative to 2017 cycle totals

- Quintile 1
- Quintile 2
- Quintile 3
- Quintile 4
- Quintile 5



Note: The percentage change is not plotted in the above chart for groups with fewer than 30 placed applicants in any one cycle.

## P.20 Placed 18 year old applicants from Wales by POLAR4 quintile: A level results day

Applicant Status	POLAR4	2009	2010	2011	2012	2013	2014	2015	2016	2017	2018
Placed	Quintile 1	990	940	960	990	1,030	1,200	1,230	1,310	1,240	1,250
	Quintile 2	1,780	1,640	1,580	1,790	1,790	1,860	1,930	2,030	1,900	1,980
	Quintile 3	2,090	1,980	1,790	1,970	1,940	1,980	2,120	2,060	2,110	2,060
	Quintile 4	1,780	1,640	1,650	1,630	1,680	1,710	1,810	1,770	1,710	1,840
	Quintile 5	1,790	1,790	1,700	1,890	1,870	1,880	1,890	2,020	1,840	1,860

## P.21 Placed 18 year old applicants from Wales by POLAR4 quintile: A level results day

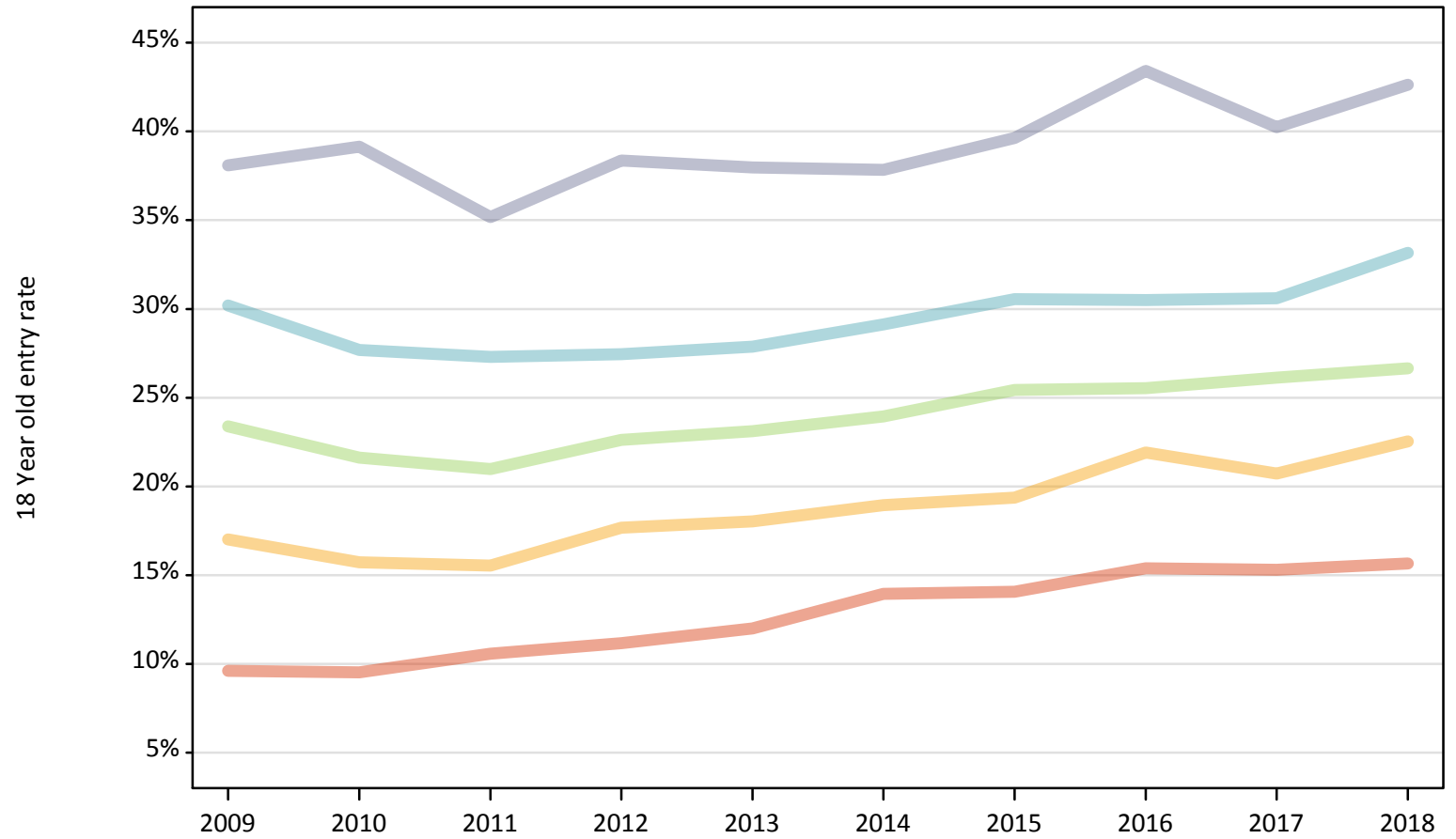
Placed 18 year old applicants: change relative to 2017 cycle totals

Applicant Status	POLAR4	2009	2010	2011	2012	2013	2014	2015	2016	2017	2018
Placed	Quintile 1	-20%	-25%	-23%	-20%	-17%	-4%	-1%	6%	0%	1%
	Quintile 2	-6%	-14%	-17%	-6%	-6%	-2%	1%	7%	0%	4%
	Quintile 3	-1%	-6%	-15%	-7%	-8%	-6%	0%	-2%	0%	-2%
	Quintile 4	4%	-4%	-3%	-5%	-2%	0%	6%	4%	0%	8%
	Quintile 5	-3%	-3%	-8%	3%	2%	2%	2%	10%	0%	1%

Note: The percentage change is not recorded in the above table for groups with fewer than 10 placed applicants in that cycle or in the 2017 cycle.

**P.22 Placed 18 year old applicants from Wales by POLAR4 quintile: A level results day**  
Placed 18 year old applicants: entry rate

- Quintile 1
- Quintile 2
- Quintile 3
- Quintile 4
- Quintile 5



**P.23 Placed 18 year old applicants from Wales by POLAR4 quintile: A level results day**

Placed 18 year old applicants: entry rate

Applicant Status	POLAR4	2009	2010	2011	2012	2013	2014	2015	2016	2017	2018
Placed	Quintile 1	9.6%	9.5%	10.6%	11.2%	12.0%	14.0%	14.1%	15.4%	15.3%	15.7%
	Quintile 2	17.0%	15.7%	15.5%	17.7%	18.0%	18.9%	19.4%	21.9%	20.7%	22.5%
	Quintile 3	23.4%	21.6%	21.0%	22.6%	23.1%	24.0%	25.4%	25.5%	26.1%	26.7%
	Quintile 4	30.2%	27.7%	27.3%	27.5%	27.9%	29.1%	30.5%	30.5%	30.6%	33.2%
	Quintile 5	38.1%	39.1%	35.2%	38.4%	38.0%	37.8%	39.6%	43.4%	40.2%	42.6%

**P.24 Placed 18 year old applicants from Wales by POLAR4 quintile: A level results day**

Placed 18 year old applicants: entry rate (indexed to 100 = Quintile 1)

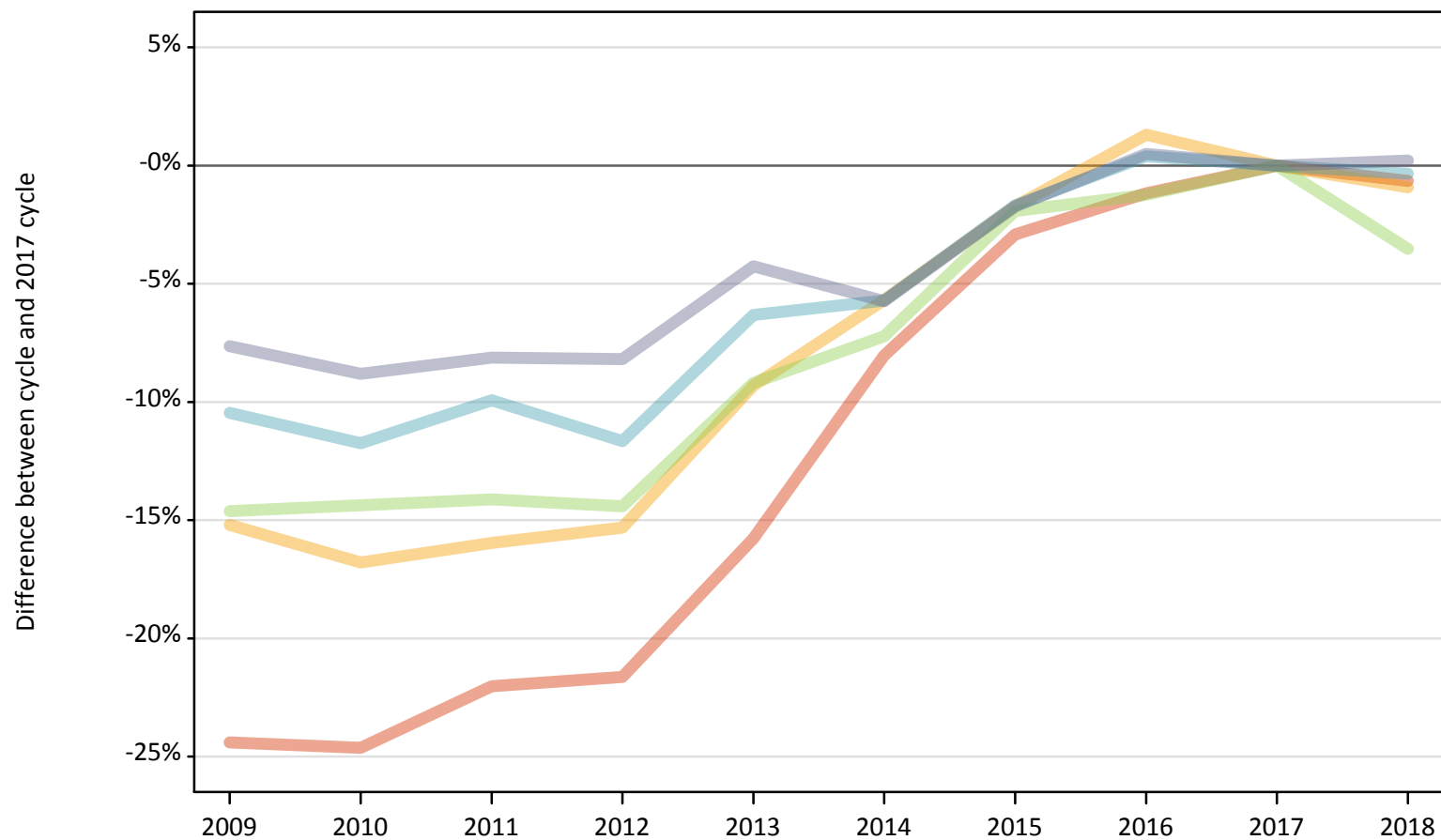
Applicant Status	POLAR4	2009	2010	2011	2012	2013	2014	2015	2016	2017	2018
Placed	Quintile 1	100	100	100	100	100	100	100	100	100	100
	Quintile 2	177	165	147	158	150	136	138	142	135	144
	Quintile 3	243	227	198	203	193	172	181	166	171	170
	Quintile 4	314	291	258	246	232	209	217	198	200	212
	Quintile 5	396	411	333	343	316	271	282	282	263	272



## P.25 Placed 18 year old applicants from the UK by POLAR4 quintile: A level results day

Placed 18 year old applicants: change relative to 2017 cycle totals

- Quintile 1
- Quintile 2
- Quintile 3
- Quintile 4
- Quintile 5



Note: The percentage change is not plotted in the above chart for groups with fewer than 30 placed applicants in any one cycle.

**P.26 Placed 18 year old applicants from the UK by POLAR4 quintile: A level results day**

Applicant Status	POLAR4	2009	2010	2011	2012	2013	2014	2015	2016	2017	2018
Placed	Quintile 1	15,910	15,860	16,410	16,490	17,730	19,360	20,430	20,800	21,050	20,910
	Quintile 2	25,310	24,840	25,090	25,280	27,080	28,160	29,340	30,240	29,850	29,580
	Quintile 3	32,210	32,300	32,390	32,280	34,250	35,000	37,000	37,250	37,720	36,390
	Quintile 4	40,720	40,130	40,960	40,170	42,600	42,880	44,710	45,660	45,480	45,320
	Quintile 5	61,480	60,700	61,160	61,120	63,730	62,750	65,420	66,890	66,570	66,710

**P.27 Placed 18 year old applicants from the UK by POLAR4 quintile: A level results day**

Placed 18 year old applicants: change relative to 2017 cycle totals

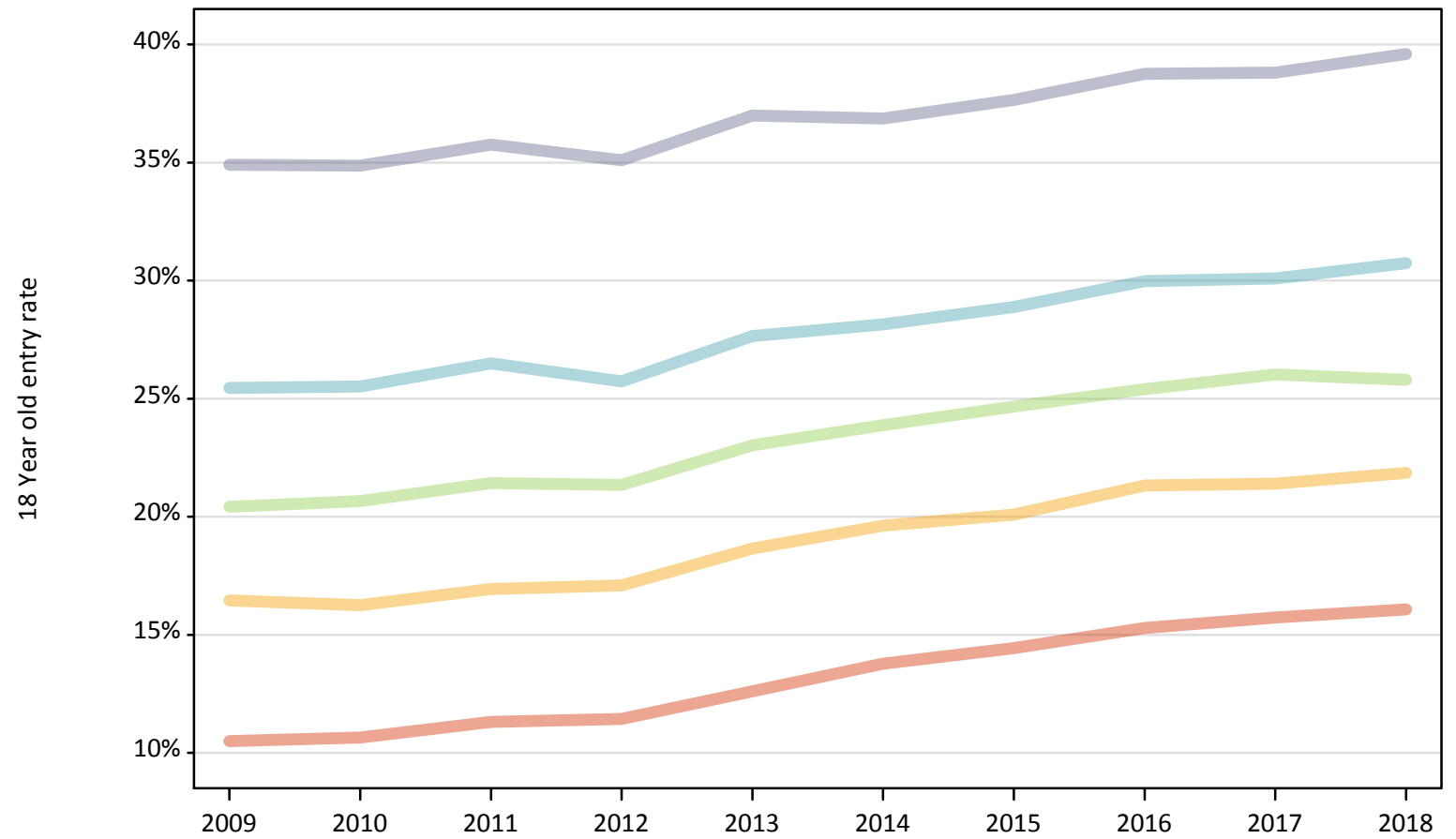
Applicant Status	POLAR4	2009	2010	2011	2012	2013	2014	2015	2016	2017	2018
Placed	Quintile 1	-24%	-25%	-22%	-22%	-16%	-8%	-3%	-1%	0%	-1%
	Quintile 2	-15%	-17%	-16%	-15%	-9%	-6%	-2%	1%	0%	-1%
	Quintile 3	-15%	-14%	-14%	-14%	-9%	-7%	-2%	-1%	0%	-4%
	Quintile 4	-10%	-12%	-10%	-12%	-6%	-6%	-2%	0%	0%	-0%
	Quintile 5	-8%	-9%	-8%	-8%	-4%	-6%	-2%	0%	0%	0%

Note: The percentage change is not recorded in the above table for groups with fewer than 10 placed applicants in that cycle or in the 2017 cycle.

## P.28 Placed 18 year old applicants from the UK by POLAR4 quintile: A level results day

Placed 18 year old applicants: entry rate

- Quintile 1
- Quintile 2
- Quintile 3
- Quintile 4
- Quintile 5



**P.29 Placed 18 year old applicants from the UK by POLAR4 quintile: A level results day**

Placed 18 year old applicants: entry rate

Applicant Status	POLAR4	2009	2010	2011	2012	2013	2014	2015	2016	2017	2018
Placed	Quintile 1	10.5%	10.6%	11.3%	11.4%	12.6%	13.8%	14.4%	15.3%	15.7%	16.1%
	Quintile 2	16.5%	16.3%	16.9%	17.1%	18.7%	19.6%	20.1%	21.3%	21.4%	21.9%
	Quintile 3	20.4%	20.7%	21.4%	21.3%	23.0%	23.9%	24.7%	25.4%	26.0%	25.8%
	Quintile 4	25.5%	25.5%	26.5%	25.7%	27.7%	28.1%	28.9%	30.0%	30.1%	30.7%
	Quintile 5	34.9%	34.9%	35.8%	35.1%	37.0%	36.9%	37.6%	38.8%	38.8%	39.6%

**P.30 Placed 18 year old applicants from the UK by POLAR4 quintile: A level results day**

Placed 18 year old applicants: entry rate (indexed to 100 = Quintile 1)

Applicant Status	POLAR4	2009	2010	2011	2012	2013	2014	2015	2016	2017	2018
Placed	Quintile 1	100	100	100	100	100	100	100	100	100	100
	Quintile 2	157	153	150	149	148	143	139	140	136	136
	Quintile 3	195	194	190	187	183	173	171	166	165	160
	Quintile 4	242	240	234	225	220	204	200	196	191	191
	Quintile 5	332	327	316	307	294	268	261	254	247	246