

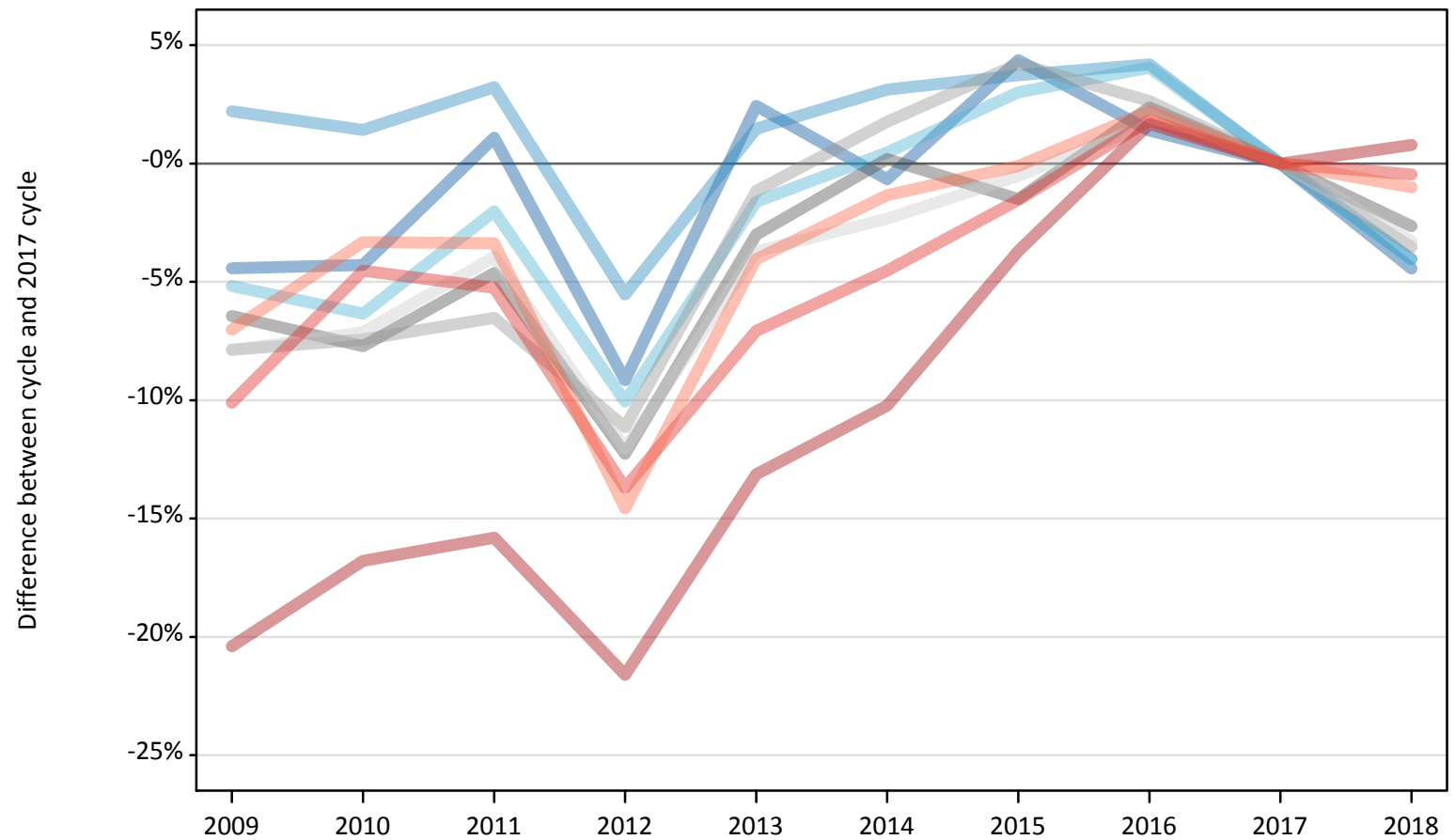
Daily Clearing Analysis: Region

Analysis at 00:05 on Thursday 16 August 2018 (A level results day)

R.1 Placed applicants by region of domicile: A level results day

Placed applicants: change relative to 2017 cycle totals

- North East
- North West
- Yorkshire and The Humber
- East Midlands
- West Midlands
- East of England
- London
- South East
- South West



Note: The percentage change is not plotted in the above chart for groups with fewer than 30 placed applicants in any one cycle.

R.2 Placed applicants by region of domicile: A level results day

Applicant Status	Domicile	2009	2010	2011	2012	2013	2014	2015	2016	2017	2018
Placed	North East	12,310	12,320	13,020	11,700	13,190	12,790	13,440	13,060	12,880	12,310
	North West	39,540	39,230	39,930	36,540	39,250	39,890	40,130	40,310	38,690	37,120
	Yorkshire and The Humber	26,070	25,750	26,940	24,730	27,050	27,630	28,320	28,610	27,500	26,390
	East Midlands	22,070	21,770	22,490	20,690	22,880	23,630	23,230	24,150	23,590	22,960
	West Midlands	28,710	28,850	29,130	27,700	30,810	31,720	32,480	31,990	31,170	30,060
	East of England	29,280	29,520	30,530	27,960	30,600	31,040	31,620	32,320	31,780	30,740
	London	43,900	45,890	46,430	43,230	47,910	49,510	53,110	56,070	55,150	55,580
	South East	45,380	48,200	47,830	43,570	46,920	48,210	49,710	51,410	50,490	50,260
	South West	26,610	27,670	27,660	24,450	27,470	28,240	28,590	29,260	28,620	28,330
	(England total)	273,870	279,200	283,960	260,570	286,070	292,650	300,630	307,170	299,850	293,750
	Scotland	25,000	26,640	26,380	26,220	26,910	27,910	30,570	31,930	32,390	33,180
	Northern Ireland	10,090	10,690	10,810	9,690	11,280	11,110	11,260	12,000	11,520	11,080
	Wales	15,200	14,310	14,180	14,910	15,240	15,980	16,220	16,630	16,110	15,960
	UK	324,160	330,850	335,330	311,390	339,500	347,650	358,680	367,730	359,860	353,960

R.3 Placed applicants by region of domicile: A level results day

Placed applicants: change relative to 2017 cycle totals

Applicant Status	Domicile	2009	2010	2011	2012	2013	2014	2015	2016	2017	2018
Placed	North East	-4%	-4%	1%	-9%	2%	-1%	4%	1%	0%	-4%
	North West	2%	1%	3%	-6%	1%	3%	4%	4%	0%	-4%
	Yorkshire and The Humber	-5%	-6%	-2%	-10%	-2%	0%	3%	4%	0%	-4%
	East Midlands	-6%	-8%	-5%	-12%	-3%	0%	-2%	2%	0%	-3%
	West Midlands	-8%	-7%	-7%	-11%	-1%	2%	4%	3%	0%	-4%
	East of England	-8%	-7%	-4%	-12%	-4%	-2%	-1%	2%	0%	-3%
	London	-20%	-17%	-16%	-22%	-13%	-10%	-4%	2%	0%	1%
	South East	-10%	-5%	-5%	-14%	-7%	-5%	-2%	2%	0%	-0%
	South West	-7%	-3%	-3%	-15%	-4%	-1%	-0%	2%	0%	-1%
	(England total)	-9%	-7%	-5%	-13%	-5%	-2%	0%	2%	0%	-2%
	Scotland	-23%	-18%	-19%	-19%	-17%	-14%	-6%	-1%	0%	2%
	Northern Ireland	-12%	-7%	-6%	-16%	-2%	-4%	-2%	4%	0%	-4%
	Wales	-6%	-11%	-12%	-7%	-5%	-1%	1%	3%	0%	-1%
	UK	-10%	-8%	-7%	-13%	-6%	-3%	-0%	2%	0%	-2%

Note: The percentage change is not recorded in the above table for groups with fewer than 10 placed applicants in that cycle or in the 2017 cycle.

R.4 Placed applicants by region of domicile: A level results day

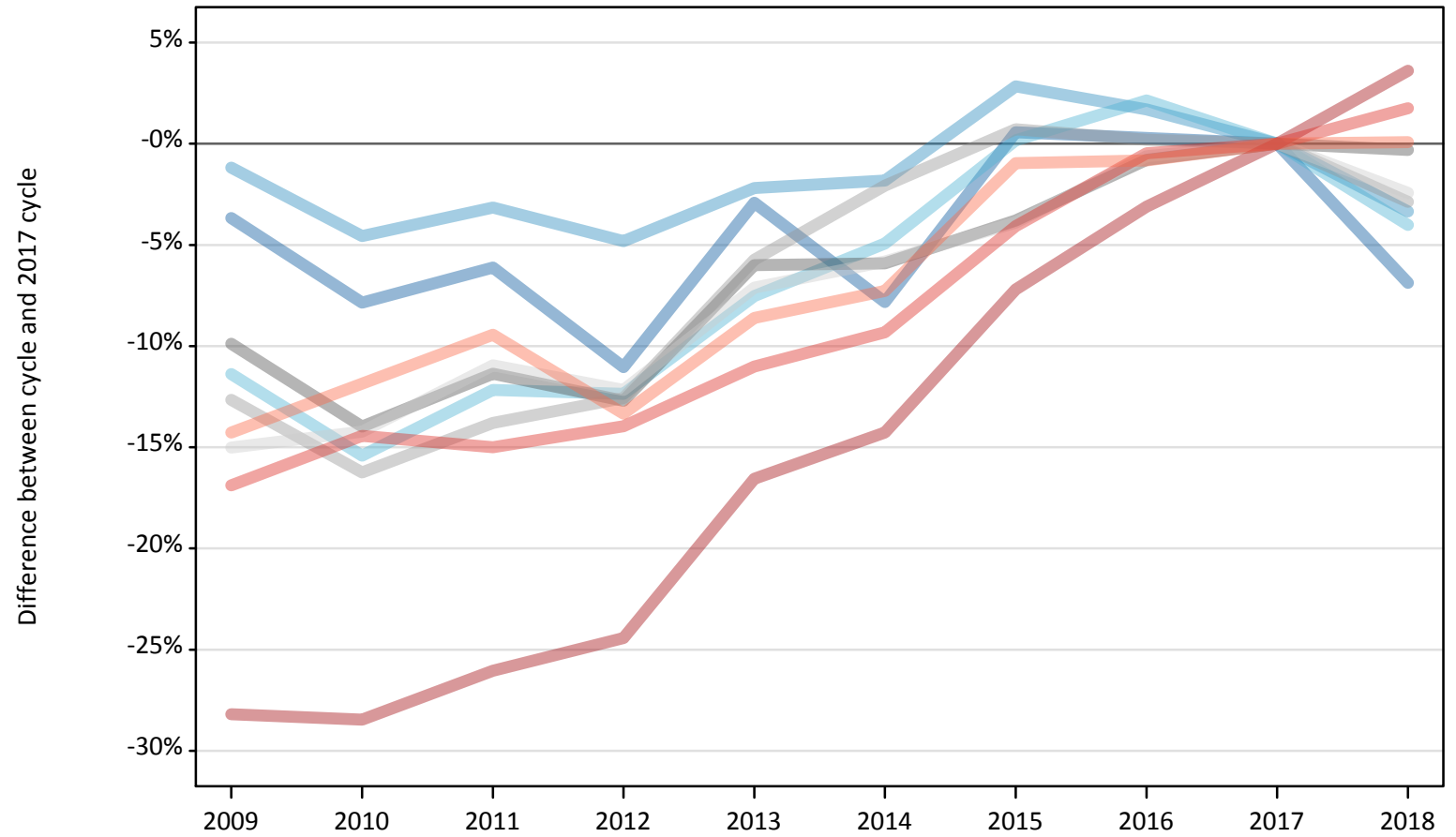
Placed applicants: absolute change relative to 2017 cycle totals

Applicant Status	Domicile	2009	2010	2011	2012	2013	2014	2015	2016	2017	2018
Placed	North East	-570	-550	140	-1,180	310	-90	560	180	0	-570
	North West	850	550	1,250	-2,140	570	1,210	1,440	1,620	0	-1,560
	Yorkshire and The Humber	-1,430	-1,750	-560	-2,760	-440	130	830	1,110	0	-1,110
	East Midlands	-1,520	-1,820	-1,090	-2,890	-710	50	-360	560	0	-620
	West Midlands	-2,450	-2,320	-2,040	-3,470	-360	550	1,320	820	0	-1,100
	East of England	-2,510	-2,270	-1,250	-3,830	-1,180	-740	-170	530	0	-1,040
	London	-11,250	-9,260	-8,720	-11,920	-7,240	-5,640	-2,040	930	0	430
	South East	-5,110	-2,290	-2,660	-6,920	-3,570	-2,280	-780	920	0	-230
	South West	-2,010	-950	-970	-4,170	-1,160	-380	-30	640	0	-290
	(England total)	-25,990	-20,650	-15,890	-39,280	-13,780	-7,200	780	7,320	0	-6,100
	Scotland	-7,390	-5,750	-6,010	-6,170	-5,480	-4,480	-1,820	-460	0	790
	Northern Ireland	-1,420	-830	-710	-1,830	-240	-410	-260	490	0	-440
	Wales	-910	-1,790	-1,930	-1,200	-870	-120	110	520	0	-150
	UK	-35,710	-29,010	-24,530	-48,480	-20,360	-12,210	-1,190	7,860	0	-5,900

R.5 Placed 18 year old applicants by region of domicile: A level results day

Placed 18 year old applicants: change relative to 2017 cycle totals

- North East
- North West
- Yorkshire and The Humber
- East Midlands
- West Midlands
- East of England
- London
- South East
- South West



Note: The percentage change is not plotted in the above chart for groups with fewer than 30 placed applicants in any one cycle.

R.6 Placed 18 year old applicants by region of domicile: A level results day

Applicant Status	Domicile	2009	2010	2011	2012	2013	2014	2015	2016	2017	2018
Placed	North East	6,860	6,560	6,690	6,340	6,910	6,570	7,160	7,140	7,120	6,630
	North West	22,070	21,310	21,620	21,250	21,840	21,920	22,960	22,710	22,330	21,580
	Yorkshire and The Humber	14,290	13,640	14,160	14,130	14,910	15,330	16,150	16,470	16,130	15,480
	East Midlands	12,370	11,810	12,170	11,980	12,900	12,920	13,210	13,620	13,730	13,690
	West Midlands	15,460	14,830	15,260	15,480	16,690	17,340	17,830	17,740	17,700	17,190
	East of England	16,550	16,700	17,340	17,100	18,090	18,340	18,710	19,350	19,470	19,000
	London	21,220	21,140	21,860	22,330	24,660	25,330	27,420	28,630	29,550	30,620
	South East	25,040	25,780	25,610	25,920	26,810	27,320	28,900	29,980	30,120	30,650
	South West	13,020	13,380	13,750	13,160	13,880	14,080	15,040	15,060	15,180	15,200
	(England total)	146,870	145,150	148,450	147,700	156,690	159,140	167,390	170,700	171,330	170,030
	Scotland	13,920	14,210	13,550	13,630	13,740	14,070	14,130	14,370	14,270	14,400
	Northern Ireland	6,850	6,830	6,660	6,030	6,930	6,620	6,740	6,960	6,840	6,530
	Wales	8,460	7,990	7,680	8,280	8,310	8,640	8,980	9,200	8,820	9,030
	UK	176,100	174,170	176,350	175,640	185,670	188,460	197,240	201,230	201,270	199,990

R.7 Placed 18 year old applicants by region of domicile: A level results day

Placed 18 year old applicants: change relative to 2017 cycle totals

Applicant Status	Domicile	2009	2010	2011	2012	2013	2014	2015	2016	2017	2018
Placed	North East	-4%	-8%	-6%	-11%	-3%	-8%	1%	0%	0%	-7%
	North West	-1%	-5%	-3%	-5%	-2%	-2%	3%	2%	0%	-3%
	Yorkshire and The Humber	-11%	-15%	-12%	-12%	-8%	-5%	0%	2%	0%	-4%
	East Midlands	-10%	-14%	-11%	-13%	-6%	-6%	-4%	-1%	0%	-0%
	West Midlands	-13%	-16%	-14%	-13%	-6%	-2%	1%	0%	0%	-3%
	East of England	-15%	-14%	-11%	-12%	-7%	-6%	-4%	-1%	0%	-2%
	London	-28%	-28%	-26%	-24%	-17%	-14%	-7%	-3%	0%	4%
	South East	-17%	-14%	-15%	-14%	-11%	-9%	-4%	-0%	0%	2%
	South West	-14%	-12%	-9%	-13%	-9%	-7%	-1%	-1%	0%	0%
	(England total)	-14%	-15%	-13%	-14%	-9%	-7%	-2%	-0%	0%	-1%
	Scotland	-2%	-0%	-5%	-4%	-4%	-1%	-1%	1%	0%	1%
	Northern Ireland	0%	-0%	-3%	-12%	1%	-3%	-2%	2%	0%	-5%
	Wales	-4%	-9%	-13%	-6%	-6%	-2%	2%	4%	0%	2%
	UK	-13%	-13%	-12%	-13%	-8%	-6%	-2%	-0%	0%	-1%

Note: The percentage change is not recorded in the above table for groups with fewer than 10 placed applicants in that cycle or in the 2017 cycle.

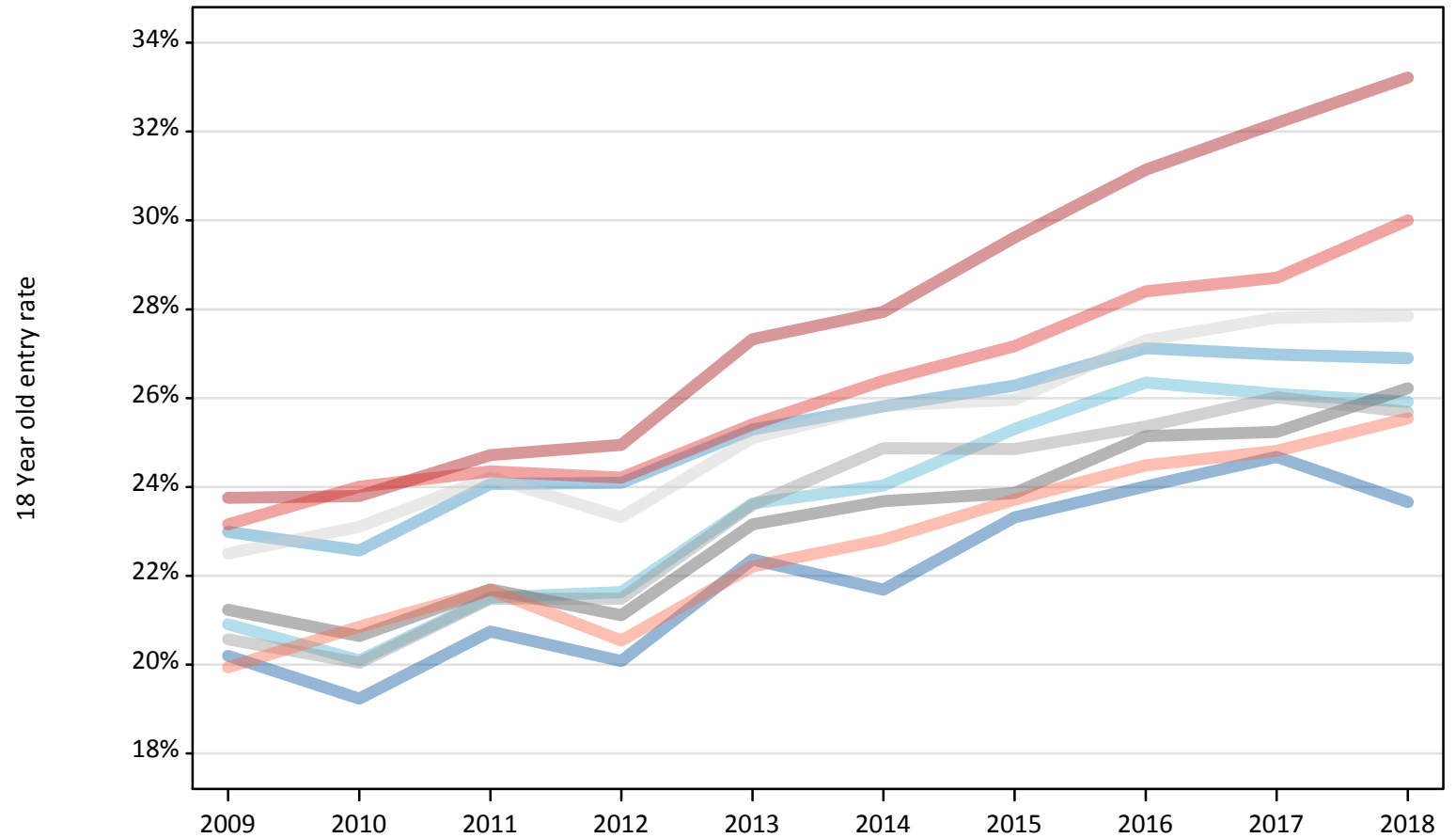
R.8 Placed 18 year old applicants by region of domicile: A level results day

Placed 18 year old applicants: absolute change relative to 2017 cycle totals

Applicant Status	Domicile	2009	2010	2011	2012	2013	2014	2015	2016	2017	2018
Placed	North East	-260	-560	-440	-790	-210	-560	40	20	0	-490
	North West	-260	-1,020	-700	-1,070	-490	-410	630	380	0	-750
	Yorkshire and The Humber	-1,830	-2,490	-1,960	-1,990	-1,210	-800	30	350	0	-650
	East Midlands	-1,360	-1,920	-1,560	-1,740	-820	-810	-520	-110	0	-40
	West Midlands	-2,240	-2,880	-2,440	-2,230	-1,010	-370	130	40	0	-510
	East of England	-2,920	-2,770	-2,130	-2,370	-1,390	-1,130	-760	-120	0	-470
	London	-8,330	-8,410	-7,700	-7,220	-4,890	-4,220	-2,130	-920	0	1,070
	South East	-5,090	-4,350	-4,520	-4,210	-3,320	-2,810	-1,220	-140	0	530
	South West	-2,170	-1,800	-1,430	-2,030	-1,310	-1,110	-150	-120	0	10
	(England total)	-24,460	-26,190	-22,880	-23,640	-14,650	-12,200	-3,950	-640	0	-1,300
	Scotland	-350	-60	-720	-640	-530	-200	-130	100	0	130
	Northern Ireland	10	-10	-190	-810	90	-220	-110	120	0	-320
	Wales	-370	-830	-1,140	-540	-510	-180	160	380	0	210
	UK	-25,170	-27,100	-24,920	-25,630	-15,600	-12,810	-4,030	-40	0	-1,280

R.9 Placed 18 year old applicants by region of domicile: A level results day
Placed 18 year old applicants: entry rate

- North East
- North West
- Yorkshire and The Humber
- East Midlands
- West Midlands
- East of England
- London
- South East
- South West



R.10 Placed 18 year old applicants by region of domicile: A level results day

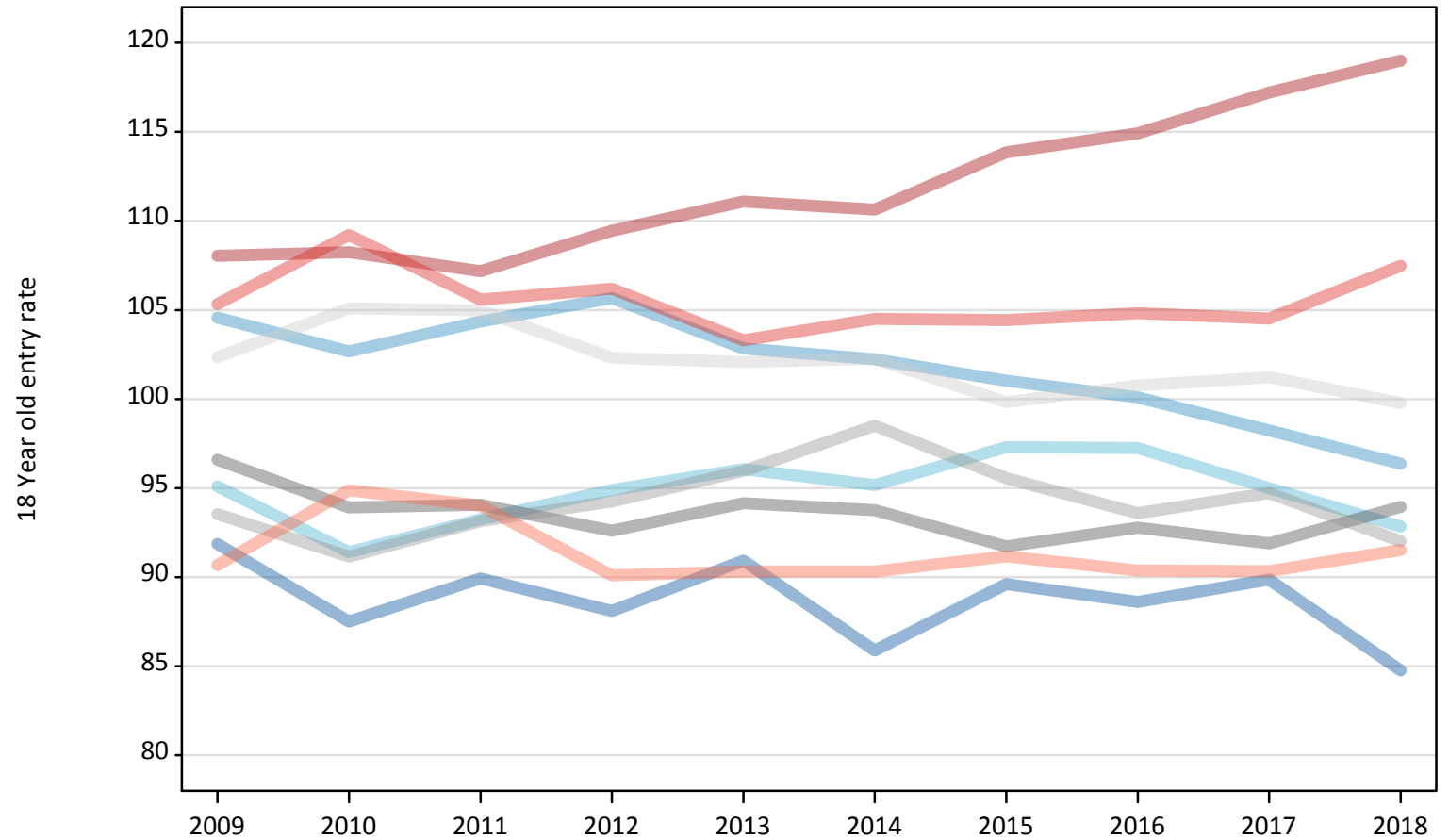
Placed 18 year old applicants: entry rate

Applicant Status	Domicile	2009	2010	2011	2012	2013	2014	2015	2016	2017	2018
Placed	North East	20.2%	19.2%	20.7%	20.1%	22.4%	21.7%	23.3%	24.0%	24.7%	23.7%
	North West	23.0%	22.6%	24.1%	24.1%	25.3%	25.8%	26.3%	27.1%	27.0%	26.9%
	Yorkshire and The Humber	20.9%	20.1%	21.5%	21.6%	23.6%	24.0%	25.3%	26.4%	26.1%	25.9%
	East Midlands	21.2%	20.6%	21.7%	21.1%	23.2%	23.7%	23.9%	25.1%	25.2%	26.2%
	West Midlands	20.6%	20.0%	21.5%	21.5%	23.6%	24.9%	24.9%	25.4%	26.0%	25.7%
	East of England	22.5%	23.1%	24.2%	23.3%	25.1%	25.8%	26.0%	27.3%	27.8%	27.9%
	London	23.8%	23.8%	24.7%	24.9%	27.3%	27.9%	29.6%	31.1%	32.2%	33.2%
	South East	23.2%	24.0%	24.4%	24.2%	25.4%	26.4%	27.2%	28.4%	28.7%	30.0%
	South West	19.9%	20.9%	21.7%	20.5%	22.2%	22.8%	23.7%	24.5%	24.8%	25.5%
	(England total)	22.0%	22.0%	23.1%	22.8%	24.6%	25.3%	26.0%	27.1%	27.5%	27.9%
	Scotland	21.5%	22.2%	21.6%	22.0%	22.3%	23.0%	23.5%	24.4%	24.9%	25.9%
	Northern Ireland	26.3%	26.8%	26.6%	24.0%	28.3%	27.3%	27.1%	28.5%	28.3%	28.1%
	Wales	21.0%	20.0%	19.9%	21.5%	22.0%	23.0%	23.8%	25.3%	24.8%	26.3%
	UK	22.0%	22.1%	22.9%	22.7%	24.4%	25.0%	25.7%	26.8%	27.2%	27.7%

R.11 Placed 18 year old applicants by region of domicile: A level results day

Placed 18 year old applicants: entry rates (indexed to 100 = England)

- North East
- North West
- Yorkshire and The Humber
- East Midlands
- West Midlands
- East of England
- London
- South East
- South West



R.12 Placed 18 year old applicants by region of domicile: A level results day

Placed 18 year old applicants: entry rate (indexed to 100 = England)

Applicant Status	Domicile	2009	2010	2011	2012	2013	2014	2015	2016	2017	2018
Placed	North East	92	87	90	88	91	86	90	89	90	85
	North West	105	103	104	106	103	102	101	100	98	96
	Yorkshire and The Humber	95	91	93	95	96	95	97	97	95	93
	East Midlands	97	94	94	93	94	94	92	93	92	94
	West Midlands	94	91	93	94	96	98	96	94	95	92
	East of England	102	105	105	102	102	102	100	101	101	100
	London	108	108	107	109	111	111	114	115	117	119
	South East	105	109	106	106	103	104	104	105	105	107
	South West	91	95	94	90	90	90	91	90	90	92
	(England total)	100	100	100	100	100	100	100	100	100	100