

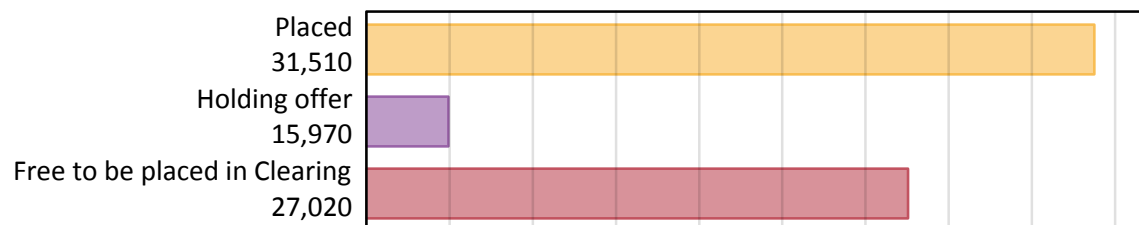
# Daily Clearing Analysis: Overview

Analysis at 00:05 on Thursday 16 August 2018 (A level results day)

## A.1 Applicants by type and status from outside the EU, 2018 cycle

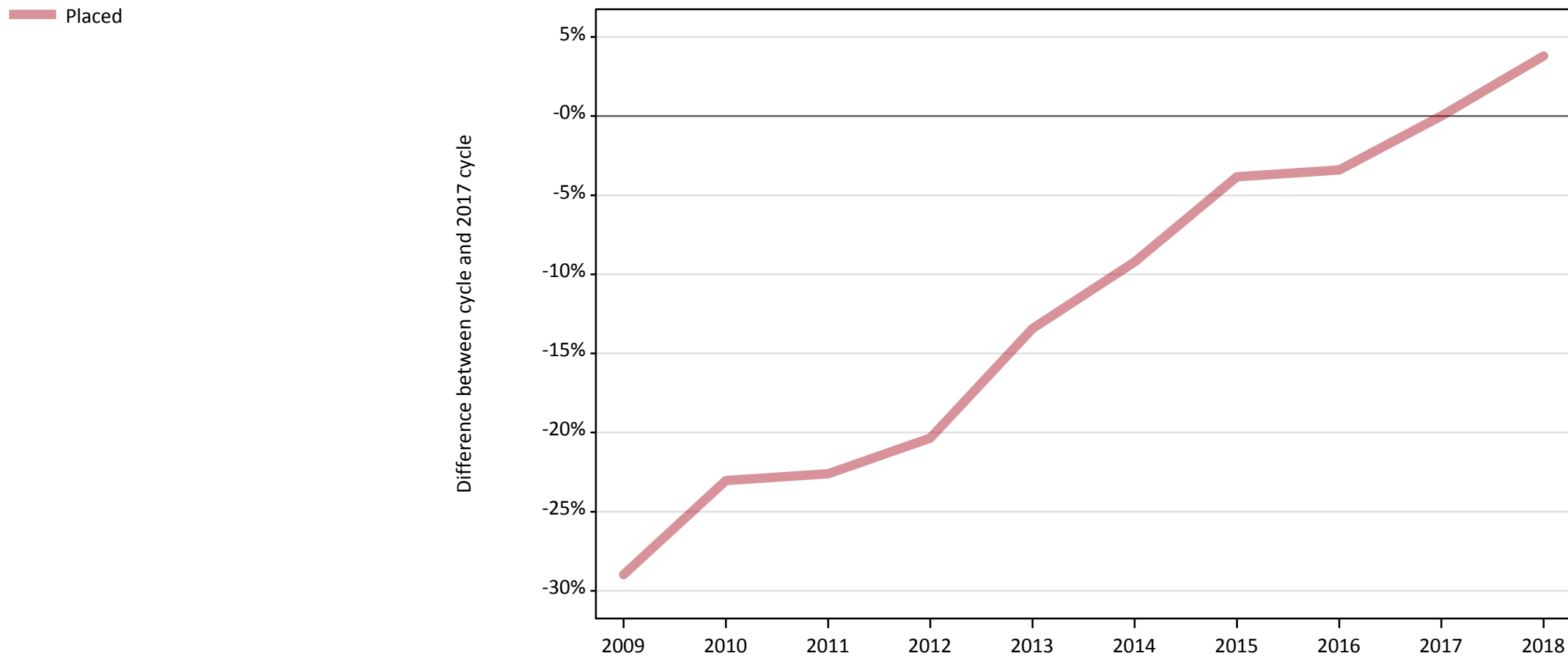
Applicant type	Status	2018
Main scheme	Placed (Clearing)	860
	Placed (Adjustment)	0
	Placed (Firm)	25,730
	Placed (Insurance)	2,960
	Placed (Other)	1,640
	Holding offer	15,970
	Free to be placed in Clearing	27,020
Direct to Clearing	Placed (Direct to Clearing)	320
	Other (Direct to Clearing)	750
All applicants	Placed	31,510

## A.2 Summary of applicants who are placed, holding offers or free to be placed in Clearing ( outside the EU )



### A.3 All placed applicants from outside the EU: A level results day

All placed applicants: difference between cycle and 2017 cycle



Note: The percentage change is not plotted in the above chart for groups with fewer than 30 placed applicants in any one cycle.

#### A.4 All placed applicants from outside the EU: A level results day

All placed applicants: applicants at A level results day

Applicant type	Status	2009	2010	2011	2012	2013	2014	2015	2016	2017	2018
All applicants	Placed	21,560	23,360	23,490	24,180	26,280	27,560	29,190	29,320	30,350	31,510

#### A.5 All placed applicants from outside the EU: A level results day

All placed applicants: difference between cycle and 2017 cycle

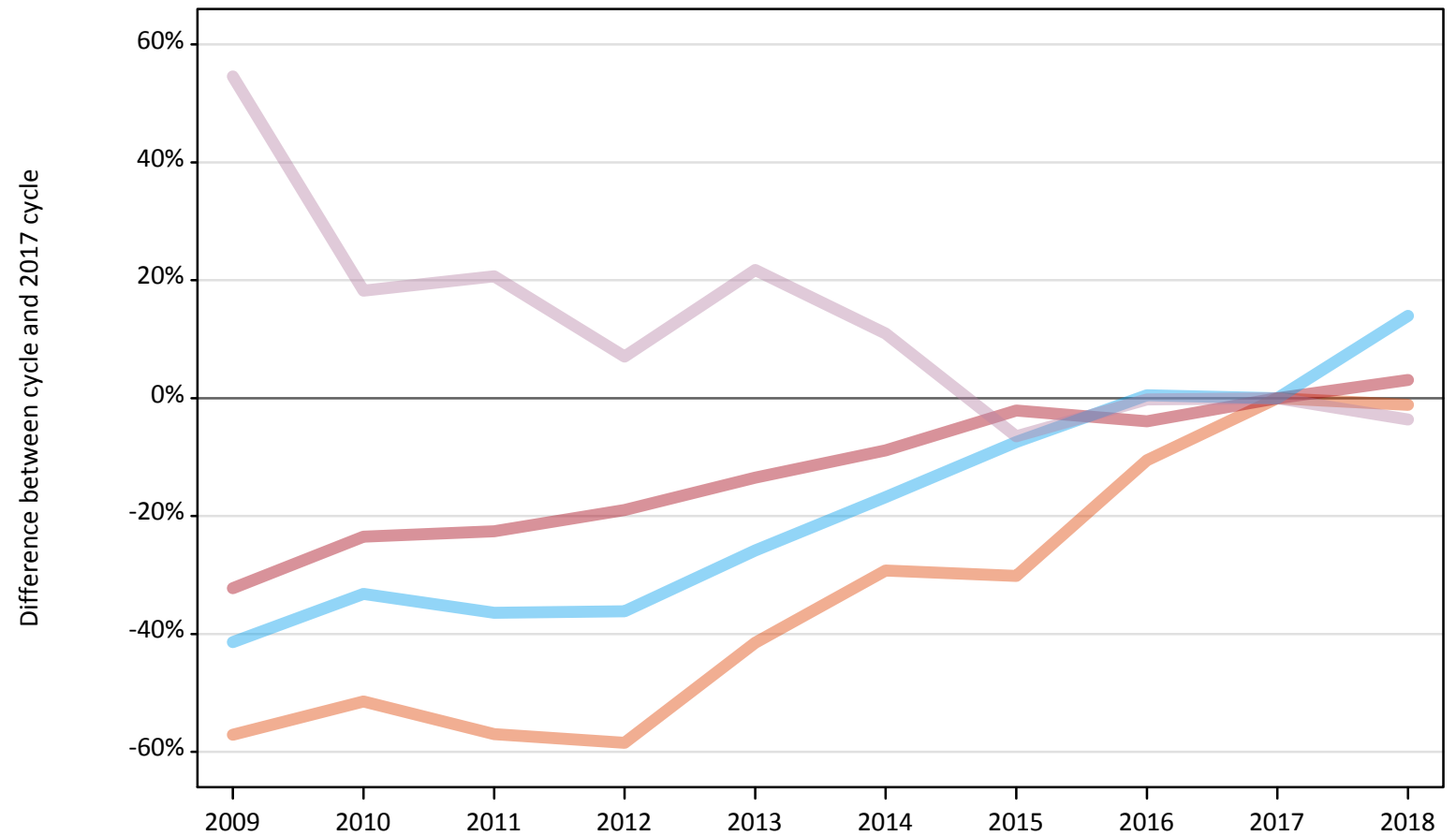
Applicant type	Status	2009	2010	2011	2012	2013	2014	2015	2016	2017	2018
All applicants	Placed	-29%	-23%	-23%	-20%	-13%	-9%	-4%	-3%	0%	4%

Note: The percentage change is not recorded in the above table for groups with fewer than 10 placed applicants in that cycle or in the 2017 cycle.

## A.6 Placed main scheme applicants from outside the EU: A level results day

All Main scheme placed routes (excluding Adjustment): difference between cycle and 2017 cycle

- Placed (Clearing)
- Placed (Firm)
- Placed (Insurance)
- Placed (Other)



Note: The percentage change is not plotted in the above chart for groups with fewer than 30 placed applicants in any one cycle.

### A.7 Placed main scheme applicants from outside the EU: A level results day

All Main scheme placed routes (excluding Adjustment): applicants at A level results day

Applicant type	Status	2009	2010	2011	2012	2013	2014	2015	2016	2017	2018
Main scheme	Placed (Clearing)	370	420	370	360	510	610	600	770	870	860
	Placed (Firm)	16,920	19,090	19,330	20,220	21,600	22,750	24,440	23,980	24,960	25,730
	Placed (Insurance)	1,520	1,730	1,650	1,660	1,920	2,160	2,400	2,610	2,590	2,960
	Placed (Other)	2,630	2,020	2,060	1,820	2,070	1,890	1,590	1,700	1,700	1,640

### A.8 Placed main scheme applicants from outside the EU: A level results day

All Main scheme placed routes (excluding Adjustment): difference between cycle and 2017 cycle

Applicant type	Status	2009	2010	2011	2012	2013	2014	2015	2016	2017	2018
Main scheme	Placed (Clearing)	-57%	-51%	-57%	-58%	-42%	-29%	-30%	-11%	0%	-1%
	Placed (Firm)	-32%	-24%	-23%	-19%	-13%	-9%	-2%	-4%	0%	3%
	Placed (Insurance)	-41%	-33%	-36%	-36%	-26%	-17%	-7%	1%	0%	14%
	Placed (Other)	55%	18%	21%	7%	22%	11%	-6%	-0%	0%	-4%

Note: The percentage change is not recorded in the above table for groups with fewer than 10 placed applicants in that cycle or in the 2017 cycle.

**A.9 Main scheme applicants placed through adjustment: A level results day**

Placed through adjustment: difference between cycle and 2017 cycle

**[Analysis on placed by adjustment available from 18 August 2018]**

**A.10 Main scheme applicants placed through adjustment: A level results day**

Placed through adjustment: applicants at A level results day

**[Analysis on placed by adjustment available from 18 August 2018]**

**A.11 Main scheme applicants placed through adjustment: A level results day**

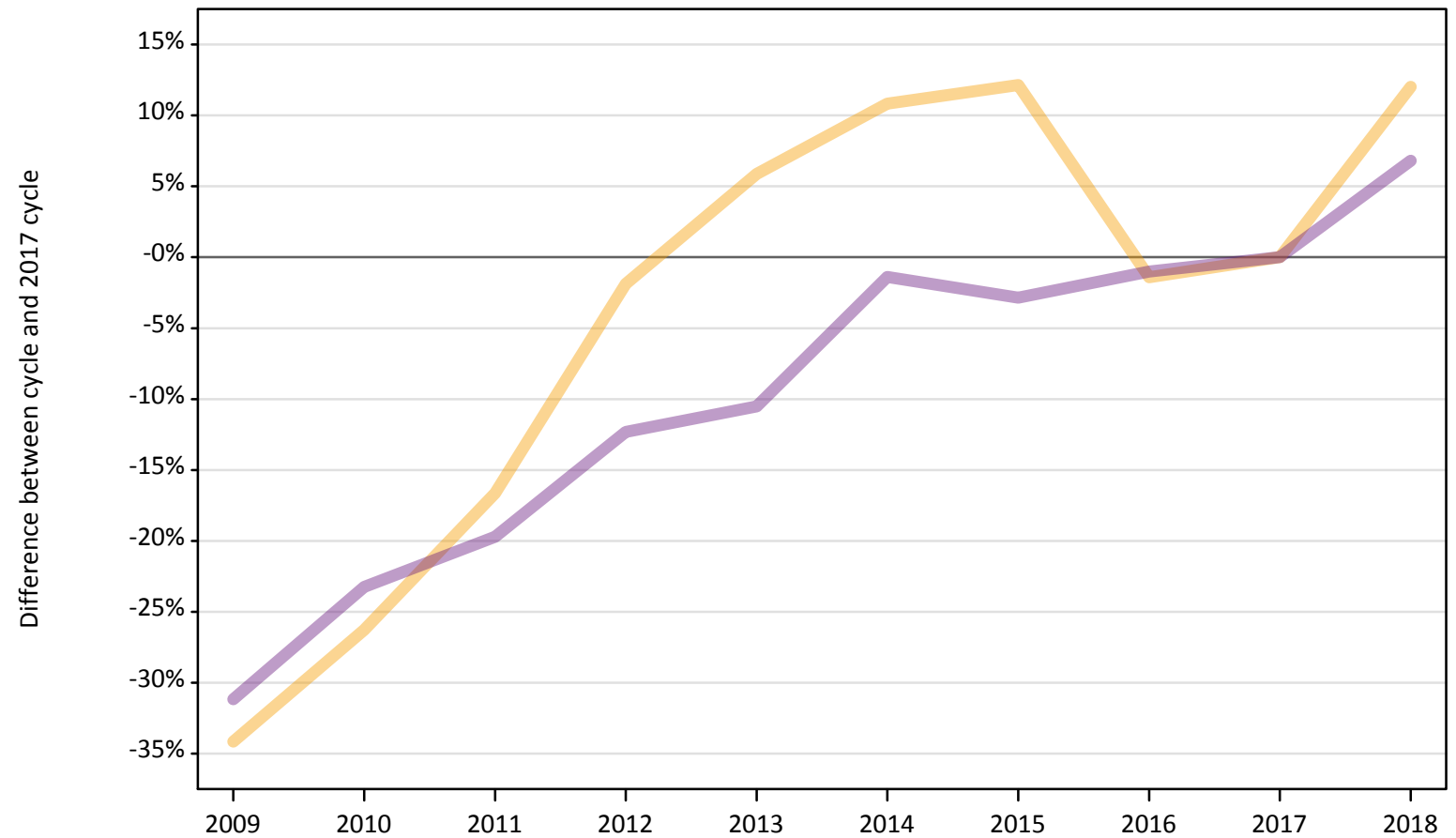
Placed through adjustment: difference between cycle and 2017 cycle

**[Analysis on placed by adjustment available from 18 August 2018]**

## A.12 Main scheme applicants not currently placed from outside the EU: A level results day

Applicants in unplaced states: difference between cycle and 2017 cycle

— Holding offer  
— Free to be placed in Clearing



Note: The percentage change is not plotted in the above chart for groups with fewer than 30 unplaced applicants in any one cycle.

### A.13 Main scheme applicants not currently placed from outside the EU: A level results day

Applicants in unplaced states: applicants at A level results day

Applicant type	Status	2009	2010	2011	2012	2013	2014	2015	2016	2017	2018
Main scheme	Holding offer	9,380	10,510	11,880	13,990	15,090	15,800	15,990	14,050	14,250	15,970
	Free to be placed in Clearing	17,420	19,420	20,320	22,190	22,640	24,950	24,580	25,050	25,300	27,020

### A.14 Main scheme applicants not currently placed from outside the EU: A level results day

Applicants in unplaced states: difference between cycle and 2017 cycle

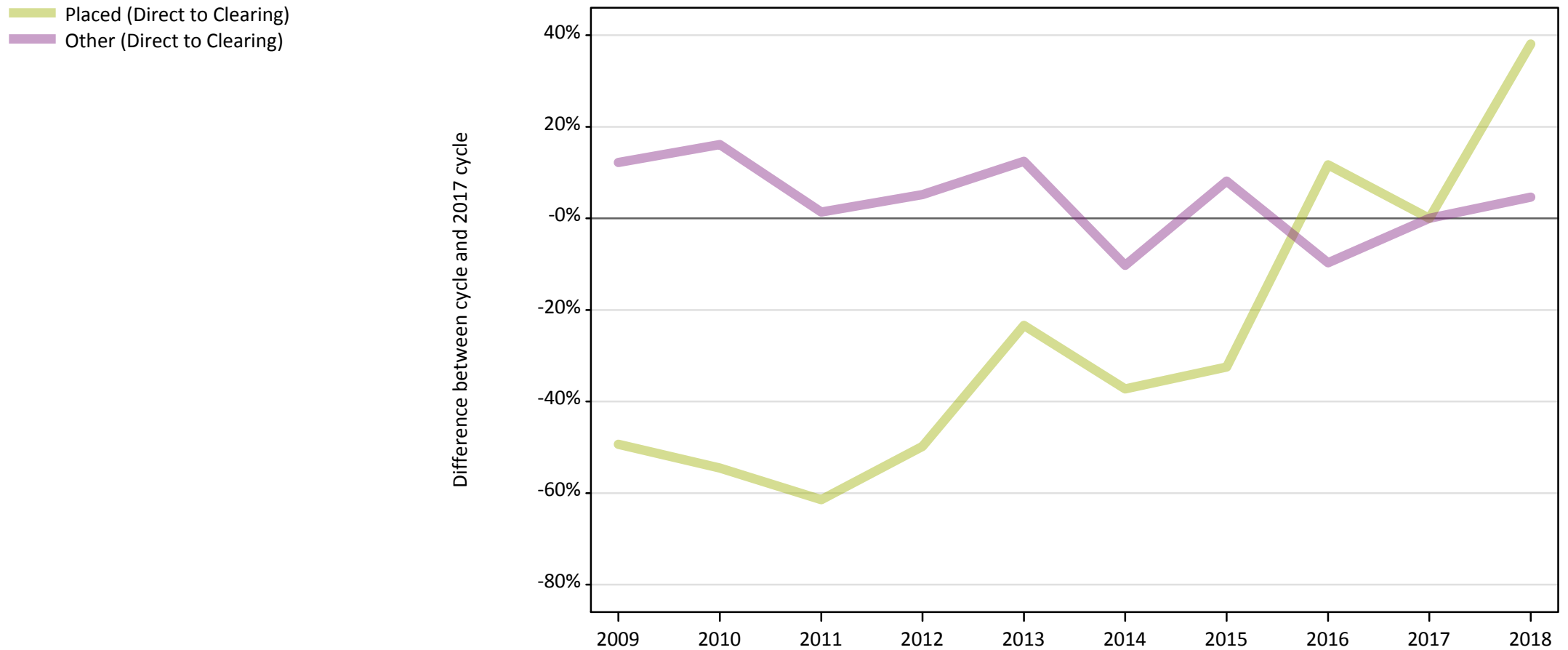
Applicant type	Status	2009	2010	2011	2012	2013	2014	2015	2016	2017	2018
Main scheme	Holding offer	-34%	-26%	-17%	-2%	6%	11%	12%	-1%	0%	12%
	Free to be placed in Clearing	-31%	-23%	-20%	-12%	-11%	-1%	-3%	-1%	0%	7%

Note: The percentage change is not recorded in the above table for groups with fewer than 10 unplaced applicants in that cycle or in the 2017 cycle.



### A.15 Direct to Clearing applicants from outside the EU: A level results day

Direct to Clearing: difference between cycle and 2017 cycle



Note: The percentage change is not plotted in the above chart for groups with fewer than 30 placed applicants in any one cycle.

### A.16 Direct to Clearing applicants from outside the EU: A level results day

Direct to Clearing A level results day

Applicant type	Status	2009	2010	2011	2012	2013	2014	2015	2016	2017	2018
Direct to Clearing	Placed (Direct to Clearing)	120	110	90	120	180	150	160	260	230	320
	Other (Direct to Clearing)	800	830	720	750	800	640	770	640	710	750

### A.17 Direct to Clearing applicants from outside the EU: A level results day

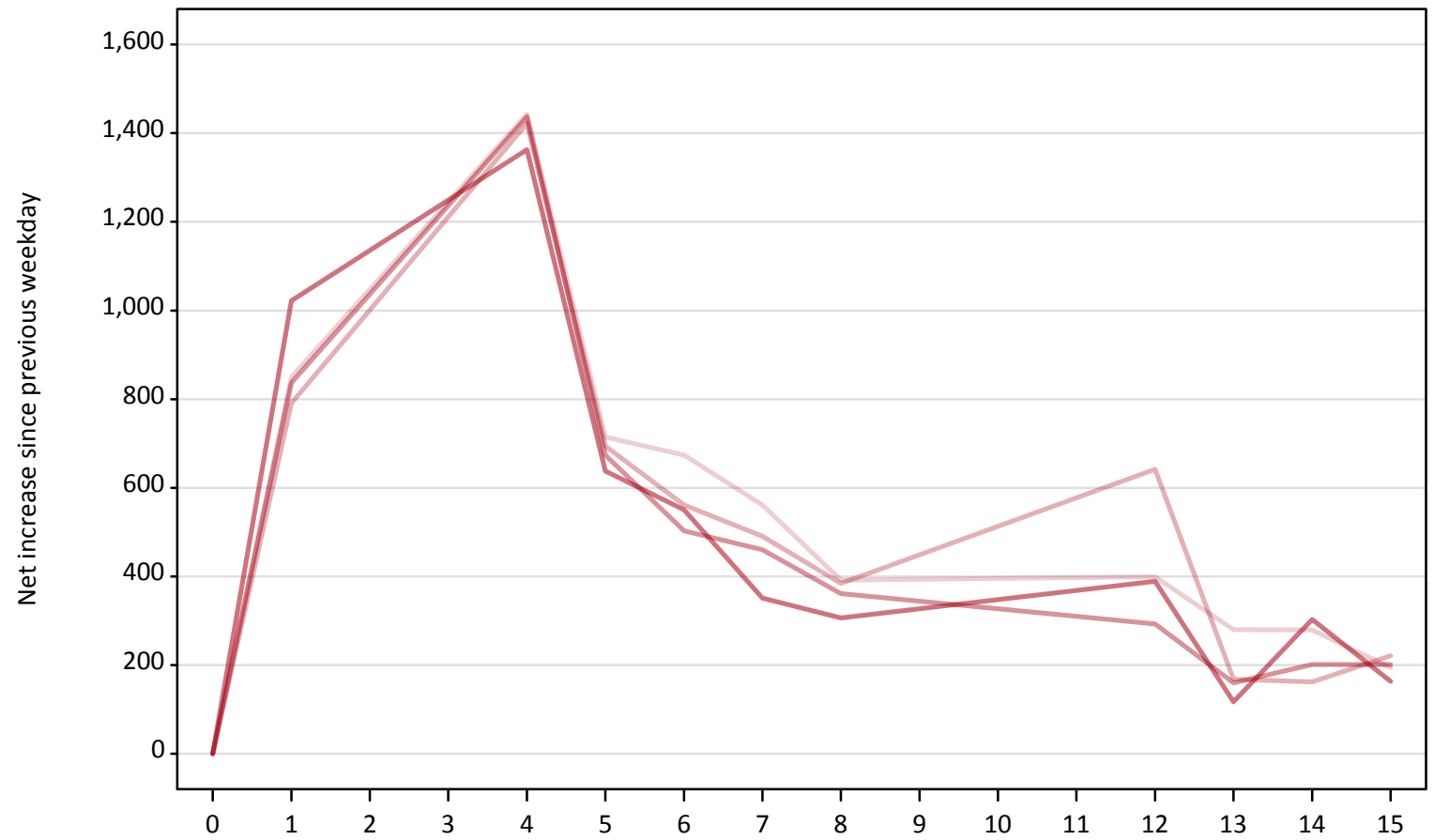
Direct to Clearing: difference between cycle and 2017 cycle

Applicant type	Status	2009	2010	2011	2012	2013	2014	2015	2016	2017	2018
Direct to Clearing	Placed (Direct to Clearing)	-49%	-55%	-61%	-50%	-23%	-37%	-32%	12%	0%	38%
	Other (Direct to Clearing)	12%	16%	1%	5%	12%	-10%	8%	-10%	0%	5%

Note: The percentage change is not recorded in the above table for groups with fewer than 10 placed applicants in that cycle or in the 2017 cycle.

**A.18 All Placed: Daily net change (from outside the EU)**  
Net increase since previous weekday (2018 cycle up to A level results day)

- 2014
- 2015
- 2016
- 2017
- 2018



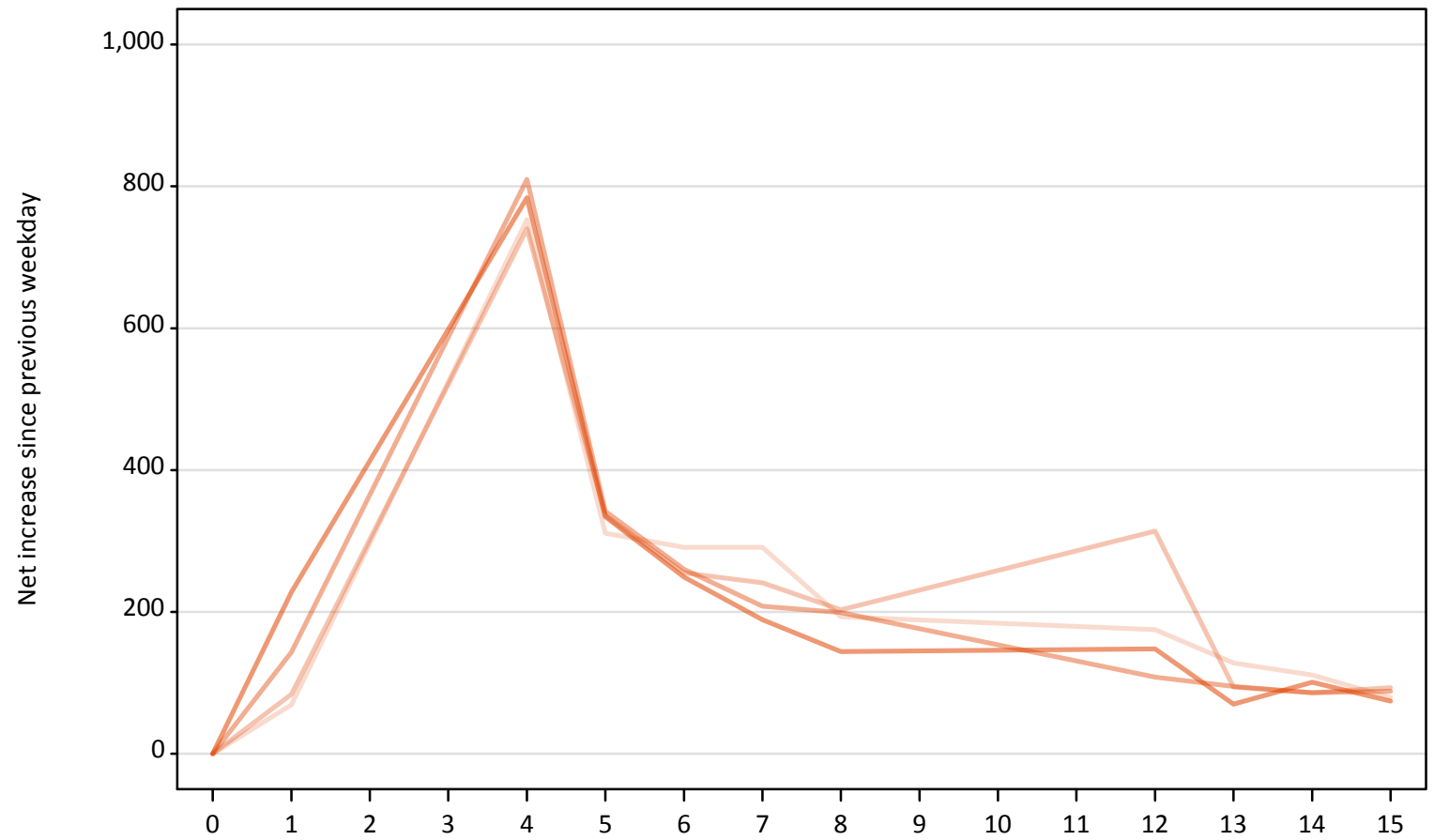
### A.19 All Placed: Daily net change (from outside the EU)

Net increase since previous weekday (2018 cycle up to A level results day)

Applicant status, days since A level results day		2014	2015	2016	2017	2018
All Placed	0	0	0	0	0	0
	1	850	790	840	1,020	
	4	1,440	1,420	1,440	1,360	
	5	710	690	670	640	
	6	670	560	500	550	
	7	560	490	460	350	
	8	390	380	360	310	
	12	400	640	290	390	
	13	280	170	160	120	
	14	280	160	200	300	
	15	190	220	200	160	

**A.20 Placed through Clearing only: Daily net change (from outside the EU)**  
Net increase since previous weekday (2018 cycle up to A level results day)

- 2014
- 2015
- 2016
- 2017
- 2018



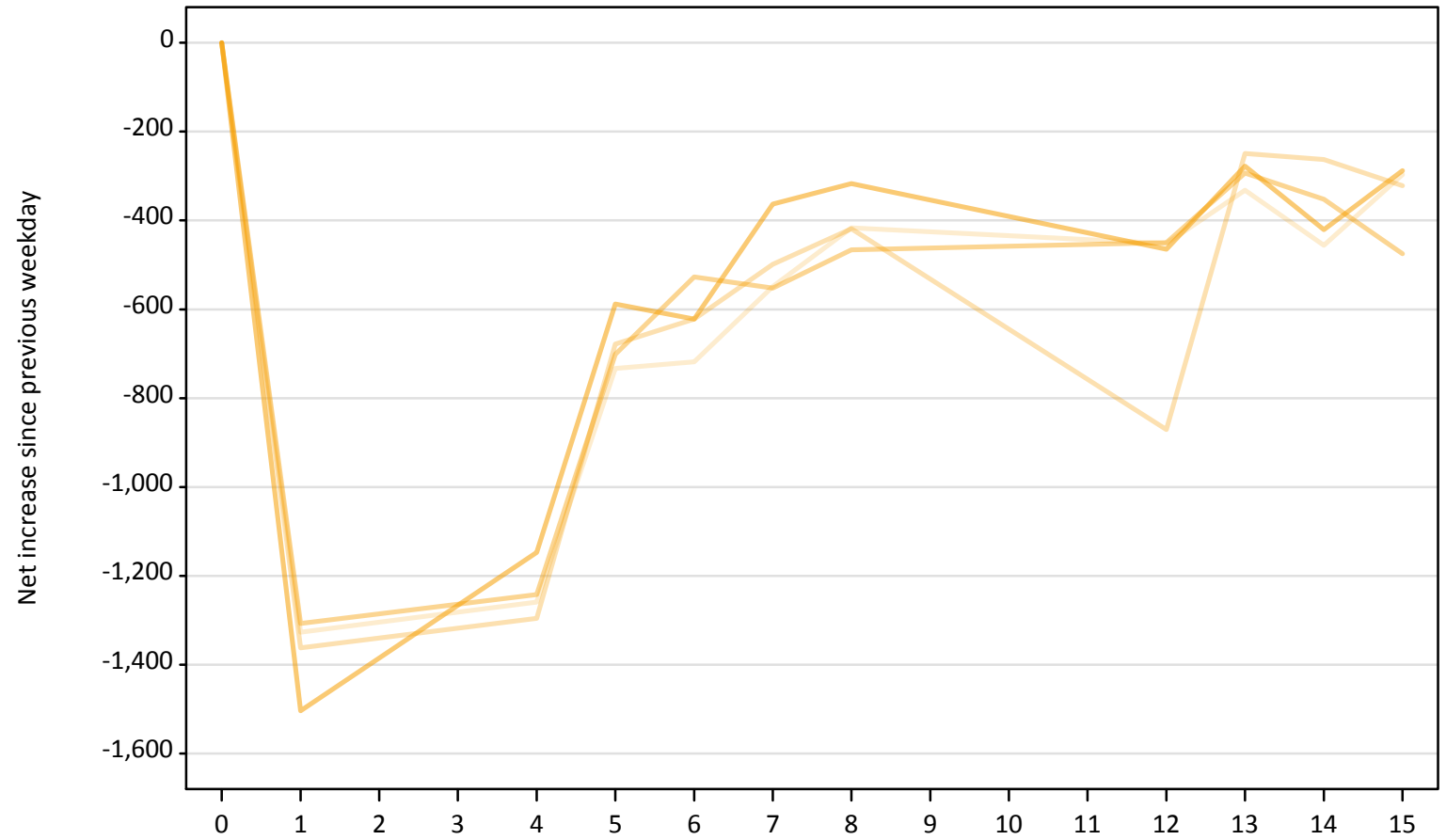
### A.21 Placed through Clearing only: Daily net change (from outside the EU)

Net increase since previous weekday (2018 cycle up to A level results day)

Applicant status, days since A level results day		2014	2015	2016	2017	2018
Placed through Clearing only	0	0	0	0	0	0
	1	70	80	140	230	
	4	750	740	810	780	
	5	310	340	340	330	
	6	290	260	260	250	
	7	290	240	210	190	
	8	190	200	200	140	
	12	180	310	110	150	
	13	130	90	100	70	
	14	110	90	90	100	
	15	80	90	90	70	

**A.22 Holding Offer: Daily net change (from outside the EU)**  
Net increase since previous weekday (2018 cycle up to A level results day)

- 2014
- 2015
- 2016
- 2017
- 2018



### A.23 Holding Offer: Daily net change (from outside the EU)

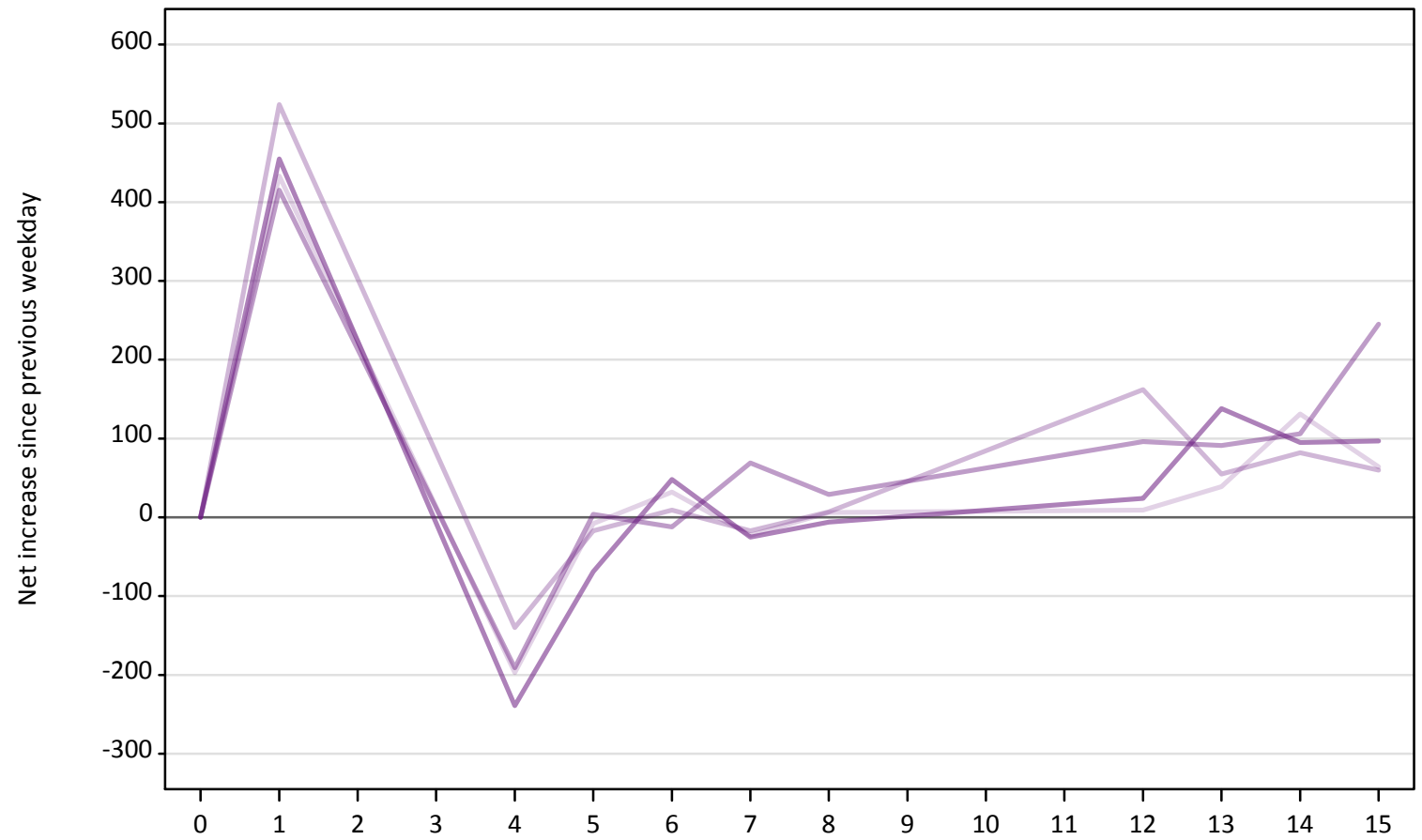
Net increase since previous weekday (2018 cycle up to A level results day)

Applicant status, days since A level results day		2014	2015	2016	2017	2018
Holding Offer	0	0	0	0	0	0
	1	-1,330	-1,360	-1,310	-1,500	
	4	-1,260	-1,300	-1,240	-1,150	
	5	-730	-680	-700	-590	
	6	-720	-620	-530	-620	
	7	-550	-500	-550	-360	
	8	-420	-420	-470	-320	
	12	-450	-870	-450	-470	
	13	-330	-250	-290	-280	
	14	-460	-260	-350	-420	
	15	-300	-320	-480	-290	



**A.24 Free to be placed in Clearing: Daily net change (from outside the EU)**  
Net increase since previous weekday (2018 cycle up to A level results day)

- 2014
- 2015
- 2016
- 2017
- 2018



**A.25 Free to be placed in Clearing: Daily net change (from outside the EU)**

Net increase since previous weekday (2018 cycle up to A level results day)

Applicant status, days since A level results day		2014	2015	2016	2017	2018
Free to be placed in Clearing	0	0	0	0	0	0
	1	430	520	420	460	
	4	-200	-140	-190	-240	
	5	-10	-20	0	-70	
	6	30	10	-10	50	
	7	-20	-20	70	-30	
	8	10	10	30	-10	
	12	10	160	100	20	
	13	40	60	90	140	
	14	130	80	110	100	
	15	60	60	250	100	