

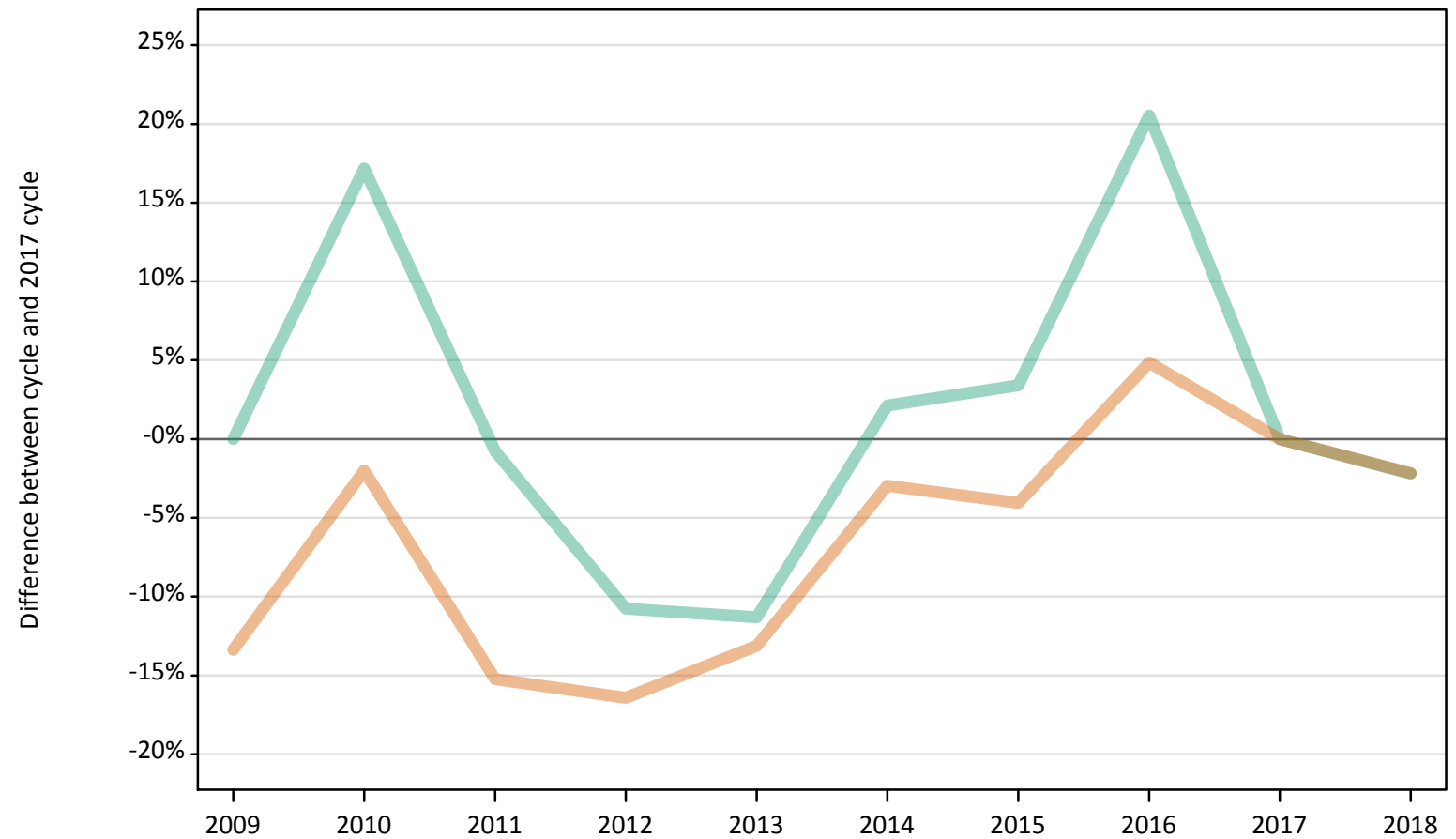
Daily Clearing Analysis: Sex

B7 Nursing analysis at 00:05 on Thursday 16 August 2018 (A level results day)

SB.1 Placed applicants to nursing by sex from all domiciles by sex: A level results day

Placed applicants to nursing by sex: change relative to 2017 cycle totals

Men
Women



Note: The percentage change is not plotted in the above chart for groups with fewer than 30 placed applicants in any one cycle.

SB.2 Placed applicants to nursing by sex from all domiciles by sex: A level results day

Applicant Status	Sex	2009	2010	2011	2012	2013	2014	2015	2016	2017	2018
Placed	Men	1,820	2,140	1,810	1,630	1,620	1,860	1,890	2,200	1,820	1,780
	Women	17,040	19,280	16,670	16,440	17,090	19,090	18,880	20,620	19,670	19,250
	All	18,870	21,410	18,480	18,070	18,710	20,950	20,760	22,820	21,490	21,030

SB.3 Placed applicants to nursing by sex from all domiciles by sex: A level results day

Placed applicants to nursing by sex: change relative to 2017 cycle totals

Applicant Status	Sex	2009	2010	2011	2012	2013	2014	2015	2016	2017	2018
Placed	Men	0%	17%	-1%	-11%	-11%	2%	3%	21%	0%	-2%
	Women	-13%	-2%	-15%	-16%	-13%	-3%	-4%	5%	0%	-2%
	All	-12%	-0%	-14%	-16%	-13%	-3%	-3%	6%	0%	-2%

Note: The percentage change is not recorded in the above table for groups with fewer than 10 placed applicants in that cycle or in the 2017 cycle.

SB.4 Placed applicants to nursing by sex from all domiciles by sex: A level results day

Placed applicants to nursing by sex: absolute change relative to 2017 cycle totals

Applicant Status	Sex	2009	2010	2011	2012	2013	2014	2015	2016	2017	2018
Placed	Men	0	310	-10	-200	-210	40	60	370	0	-40
	Women	-2,630	-390	-3,000	-3,230	-2,580	-580	-800	950	0	-420
	All	-2,630	-80	-3,010	-3,430	-2,790	-540	-730	1,330	0	-460

SB.5 Placed applicants to nursing by sex from the UK by sex: A level results day

Placed applicants to nursing by sex: change relative to 2017 cycle totals

Men
Women



Note: The percentage change is not plotted in the above chart for groups with fewer than 30 placed applicants in any one cycle.

SB.6 Placed applicants to nursing by sex from the UK by sex: A level results day

Applicant Status	Sex	2009	2010	2011	2012	2013	2014	2015	2016	2017	2018
Placed	Men	1,800	2,090	1,750	1,600	1,570	1,820	1,850	2,150	1,790	1,740
	Women	16,850	18,880	16,270	16,060	16,670	18,710	18,460	20,200	19,250	18,860
	All	18,650	20,970	18,020	17,660	18,250	20,540	20,310	22,350	21,040	20,600

SB.7 Placed applicants to nursing by sex from the UK by sex: A level results day

Placed applicants to nursing by sex: change relative to 2017 cycle totals

Applicant Status	Sex	2009	2010	2011	2012	2013	2014	2015	2016	2017	2018
Placed	Men	1%	17%	-2%	-10%	-12%	2%	3%	20%	0%	-3%
	Women	-12%	-2%	-16%	-17%	-13%	-3%	-4%	5%	0%	-2%
	All	-11%	-0%	-14%	-16%	-13%	-2%	-3%	6%	0%	-2%

Note: The percentage change is not recorded in the above table for groups with fewer than 10 placed applicants in that cycle or in the 2017 cycle.

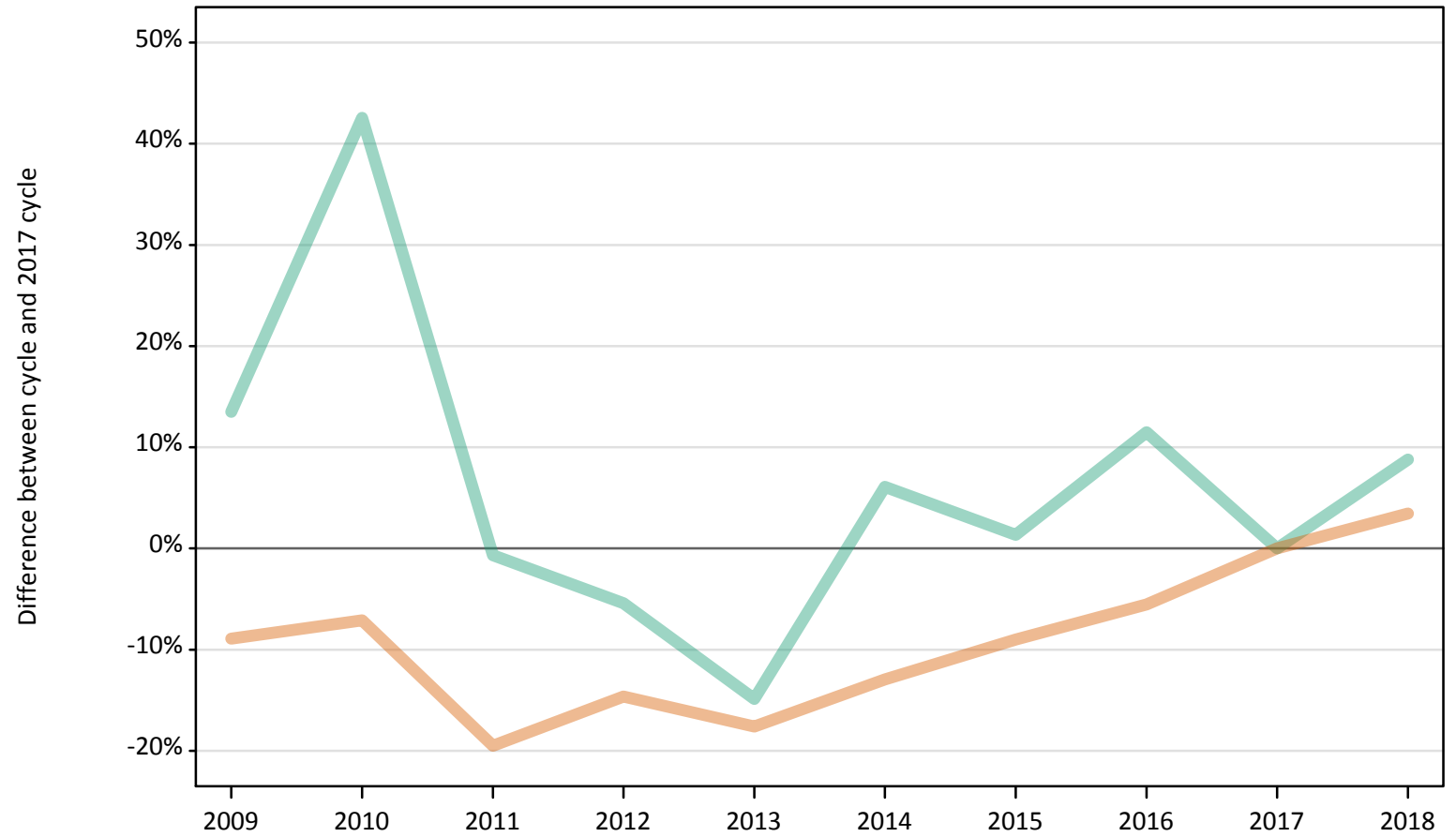
SB.8 Placed applicants to nursing by sex from the UK by sex: A level results day

Placed applicants to nursing by sex: absolute change relative to 2017 cycle totals

Applicant Status	Sex	2009	2010	2011	2012	2013	2014	2015	2016	2017	2018
Placed	Men	10	300	-30	-190	-220	40	60	360	0	-50
	Women	-2,410	-370	-2,990	-3,190	-2,580	-540	-790	950	0	-390
	All	-2,390	-70	-3,020	-3,380	-2,800	-500	-730	1,310	0	-440

SB.9 Placed 18 year old applicants to nursing from the UK by sex: A level results day
Placed 18 year old applicants to nursing: change relative to 2017 cycle totals

Men
Women



Note: The percentage change is not plotted in the above chart for groups with fewer than 30 placed applicants in any one cycle.

SB.10 Placed 18 year old applicants to nursing from the UK by sex: A level results day

Applicant Status	Sex	2009	2010	2011	2012	2013	2014	2015	2016	2017	2018
Placed	Men	170	210	150	140	130	160	150	170	150	160
	Women	4,130	4,210	3,650	3,870	3,730	3,940	4,120	4,280	4,530	4,690
	All	4,290	4,420	3,790	4,010	3,860	4,100	4,270	4,440	4,680	4,850

SB.11 Placed 18 year old applicants to nursing from the UK by sex: A level results day

Placed 18 year old applicants to nursing: change relative to 2017 cycle totals

Applicant Status	Sex	2009	2010	2011	2012	2013	2014	2015	2016	2017	2018
Placed	Men	14%	43%	-1%	-5%	-15%	6%	1%	11%	0%	9%
	Women	-9%	-7%	-19%	-15%	-18%	-13%	-9%	-6%	0%	3%
	All	-8%	-6%	-19%	-14%	-18%	-12%	-9%	-5%	0%	4%

Note: The percentage change is not recorded in the above table for groups with fewer than 10 placed applicants in that cycle or in the 2017 cycle.

SB.12 Placed 18 year old applicants to nursing from the UK by sex: A level results day

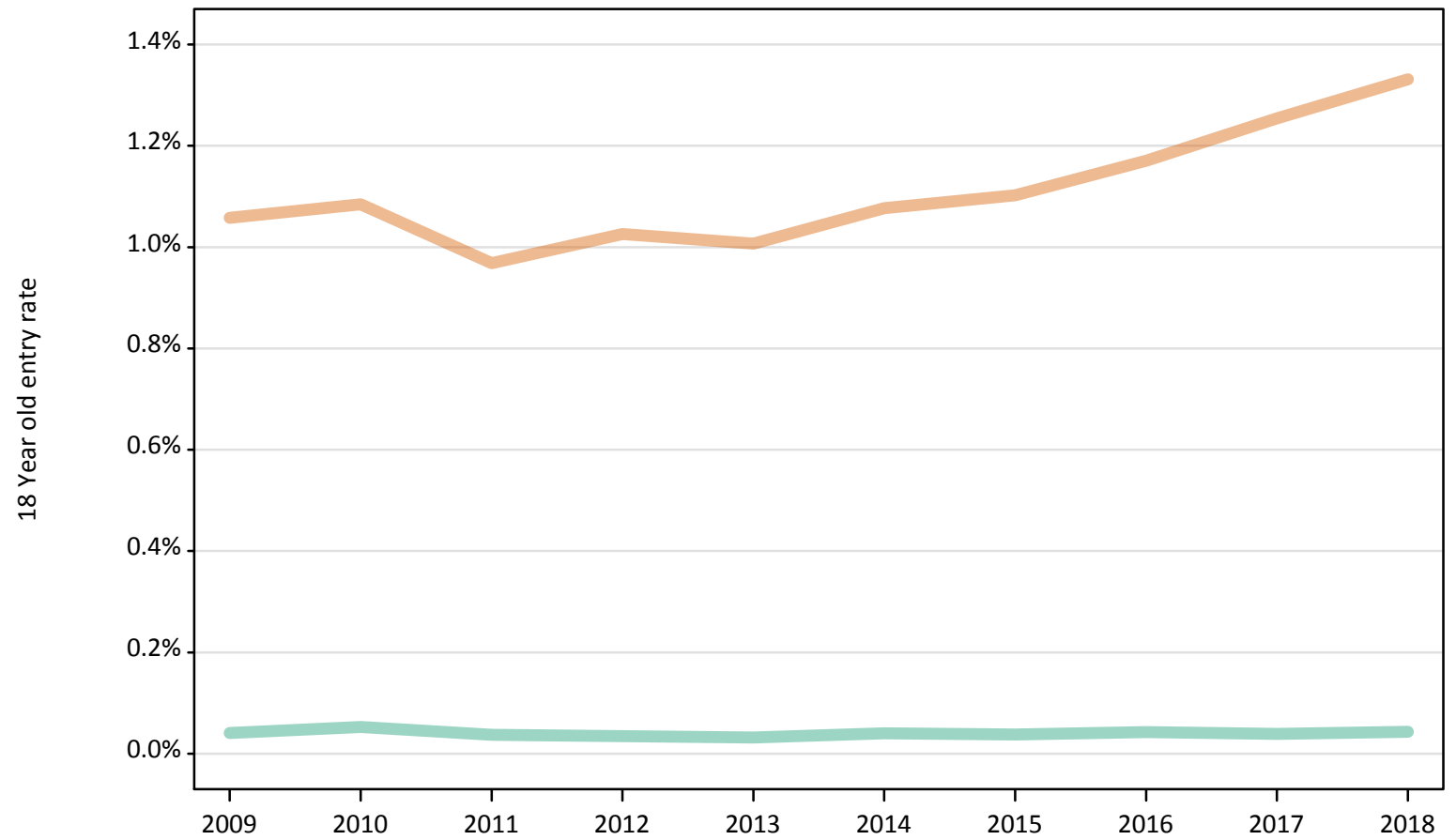
Placed 18 year old applicants to nursing: absolute change relative to 2017 cycle totals

Applicant Status	Sex	2009	2010	2011	2012	2013	2014	2015	2016	2017	2018
Placed	Men	20	60	0	-10	-20	10	0	20	0	10
	Women	-400	-320	-880	-660	-800	-590	-410	-250	0	160
	All	-380	-260	-880	-670	-820	-580	-410	-230	0	170

SB.13 Placed 18 year old applicants to nursing from the UK by sex: A level results day

Placed 18 year old applicants to nursing: entry rate

Men
Women



SB.14 Placed 18 year old applicants to nursing from the UK by sex: A level results day

Placed 18 year old applicants to nursing: entry rate

Applicant Status	Sex	2009	2010	2011	2012	2013	2014	2015	2016	2017	2018
Placed	Men	0.0%	0.1%	0.0%	0.0%	0.0%	0.0%	0.0%	0.0%	0.0%	0.0%
	Women	1.1%	1.1%	1.0%	1.0%	1.0%	1.1%	1.1%	1.2%	1.3%	1.3%
	All	0.5%	0.6%	0.5%	0.5%	0.5%	0.5%	0.6%	0.6%	0.6%	0.7%

SB.15 Placed 18 year old applicants to nursing from the UK by sex: A level results day

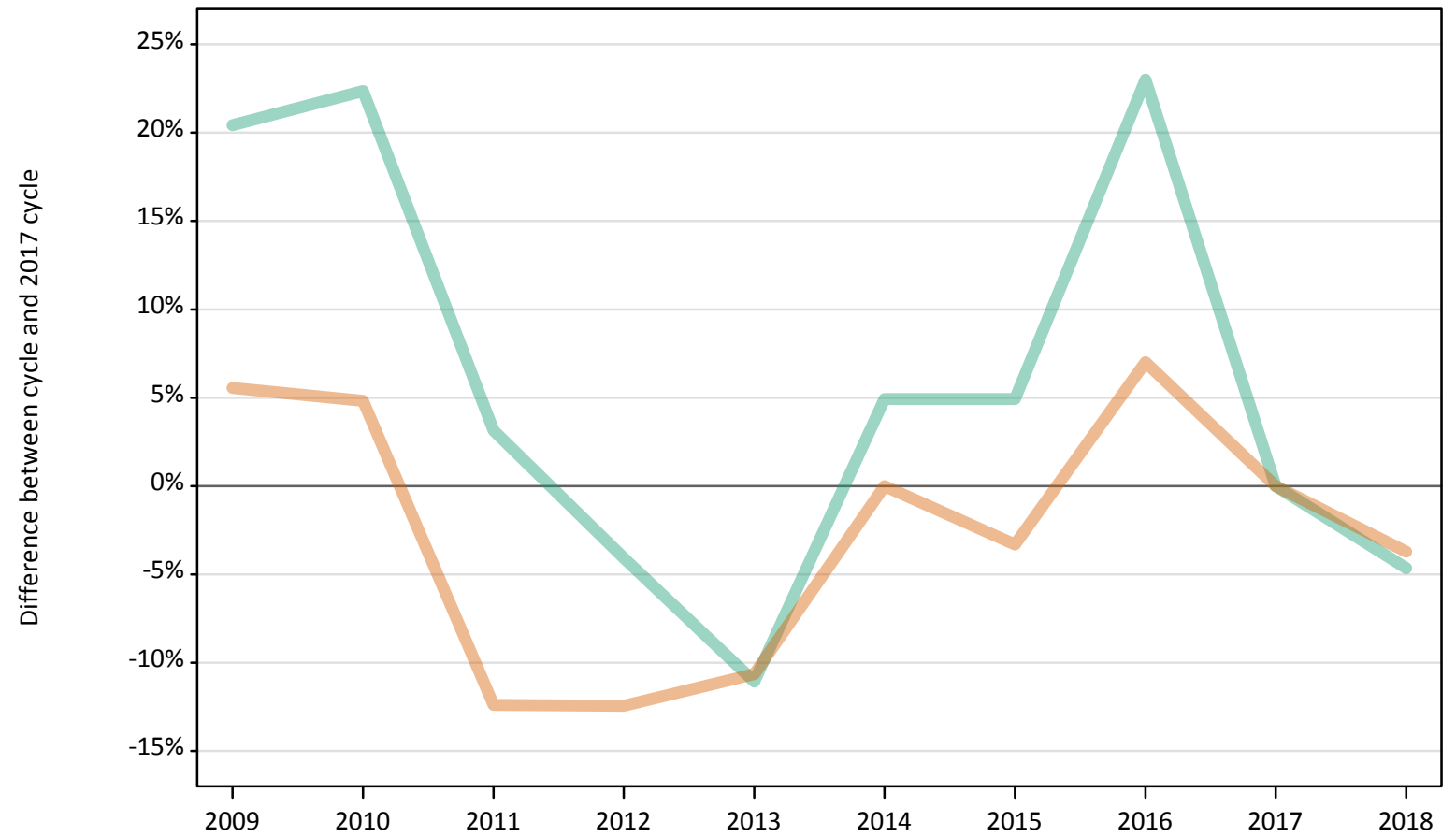
Placed 18 year old applicants to nursing: entry rate (indexed to 100 = Men)

Applicant Status	Sex	2009	2010	2011	2012	2013	2014	2015	2016	2017	2018
Placed	Men	100	100	100	100	100	100	100	100	100	100
	Women	2,579	2,065	2,592	2,905	3,120	2,656	2,885	2,726	3,219	3,064

SB.16 Placed applicants to nursing by sex from England by sex: A level results day

Placed applicants to nursing by sex: change relative to 2017 cycle totals

Men
Women



Note: The percentage change is not plotted in the above chart for groups with fewer than 30 placed applicants in any one cycle.

SB.17 Placed applicants to nursing by sex from England by sex: A level results day

Applicant Status	Sex	2009	2010	2011	2012	2013	2014	2015	2016	2017	2018
Placed	Men	1,690	1,710	1,440	1,340	1,250	1,470	1,470	1,720	1,400	1,340
	Women	15,520	15,410	12,880	12,870	13,140	14,700	14,220	15,730	14,700	14,160
	All	17,200	17,130	14,320	14,220	14,380	16,170	15,680	17,460	16,100	15,490

SB.18 Placed applicants to nursing by sex from England by sex: A level results day

Placed applicants to nursing by sex: change relative to 2017 cycle totals

Applicant Status	Sex	2009	2010	2011	2012	2013	2014	2015	2016	2017	2018
Placed	Men	20%	22%	3%	-4%	-11%	5%	5%	23%	0%	-5%
	Women	6%	5%	-12%	-12%	-11%	-0%	-3%	7%	0%	-4%
	All	7%	6%	-11%	-12%	-11%	0%	-3%	8%	0%	-4%

Note: The percentage change is not recorded in the above table for groups with fewer than 10 placed applicants in that cycle or in the 2017 cycle.

SB.19 Placed applicants to nursing by sex from England by sex: A level results day

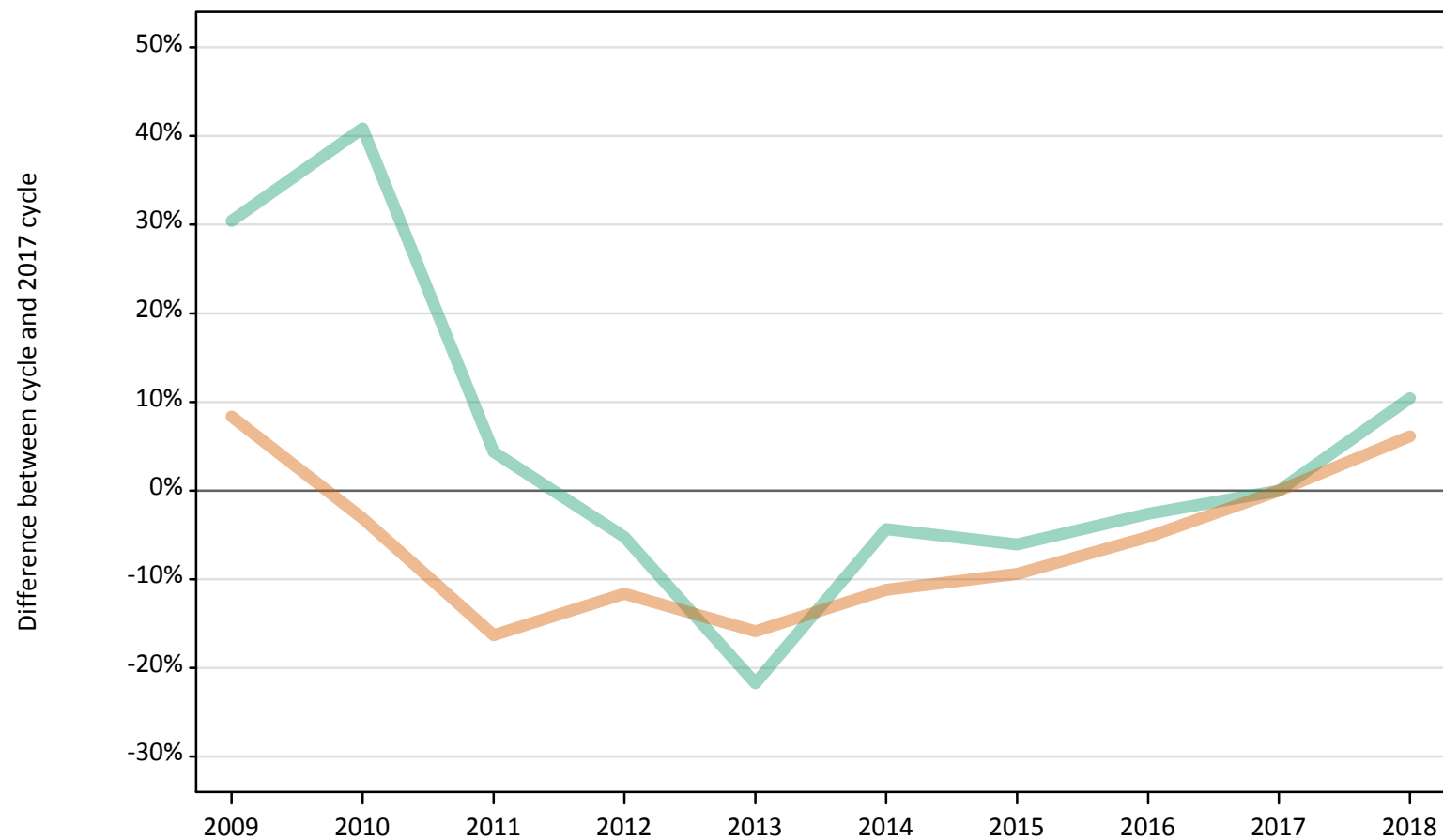
Placed applicants to nursing by sex: absolute change relative to 2017 cycle totals

Applicant Status	Sex	2009	2010	2011	2012	2013	2014	2015	2016	2017	2018
Placed	Men	290	310	40	-60	-160	70	70	320	0	-70
	Women	820	710	-1,820	-1,830	-1,570	0	-490	1,030	0	-550
	All	1,100	1,020	-1,780	-1,890	-1,720	70	-420	1,350	0	-610

SB.20 Placed 18 year old applicants to nursing from England by sex: A level results day

Placed 18 year old applicants to nursing: change relative to 2017 cycle totals

Men
Women



Note: The percentage change is not plotted in the above chart for groups with fewer than 30 placed applicants in any one cycle.

SB.21 Placed 18 year old applicants to nursing from England by sex: A level results day

Applicant Status	Sex	2009	2010	2011	2012	2013	2014	2015	2016	2017	2018
Placed	Men	150	160	120	110	90	110	110	110	120	130
	Women	3,670	3,280	2,840	3,000	2,850	3,010	3,070	3,210	3,390	3,600
	All	3,820	3,450	2,960	3,100	2,940	3,120	3,180	3,320	3,500	3,720

SB.22 Placed 18 year old applicants to nursing from England by sex: A level results day

Placed 18 year old applicants to nursing: change relative to 2017 cycle totals

Applicant Status	Sex	2009	2010	2011	2012	2013	2014	2015	2016	2017	2018
Placed	Men	30%	41%	4%	-5%	-22%	-4%	-6%	-3%	0%	10%
	Women	8%	-3%	-16%	-12%	-16%	-11%	-9%	-5%	0%	6%
	All	9%	-2%	-16%	-11%	-16%	-11%	-9%	-5%	0%	6%

Note: The percentage change is not recorded in the above table for groups with fewer than 10 placed applicants in that cycle or in the 2017 cycle.

SB.23 Placed 18 year old applicants to nursing from England by sex: A level results day

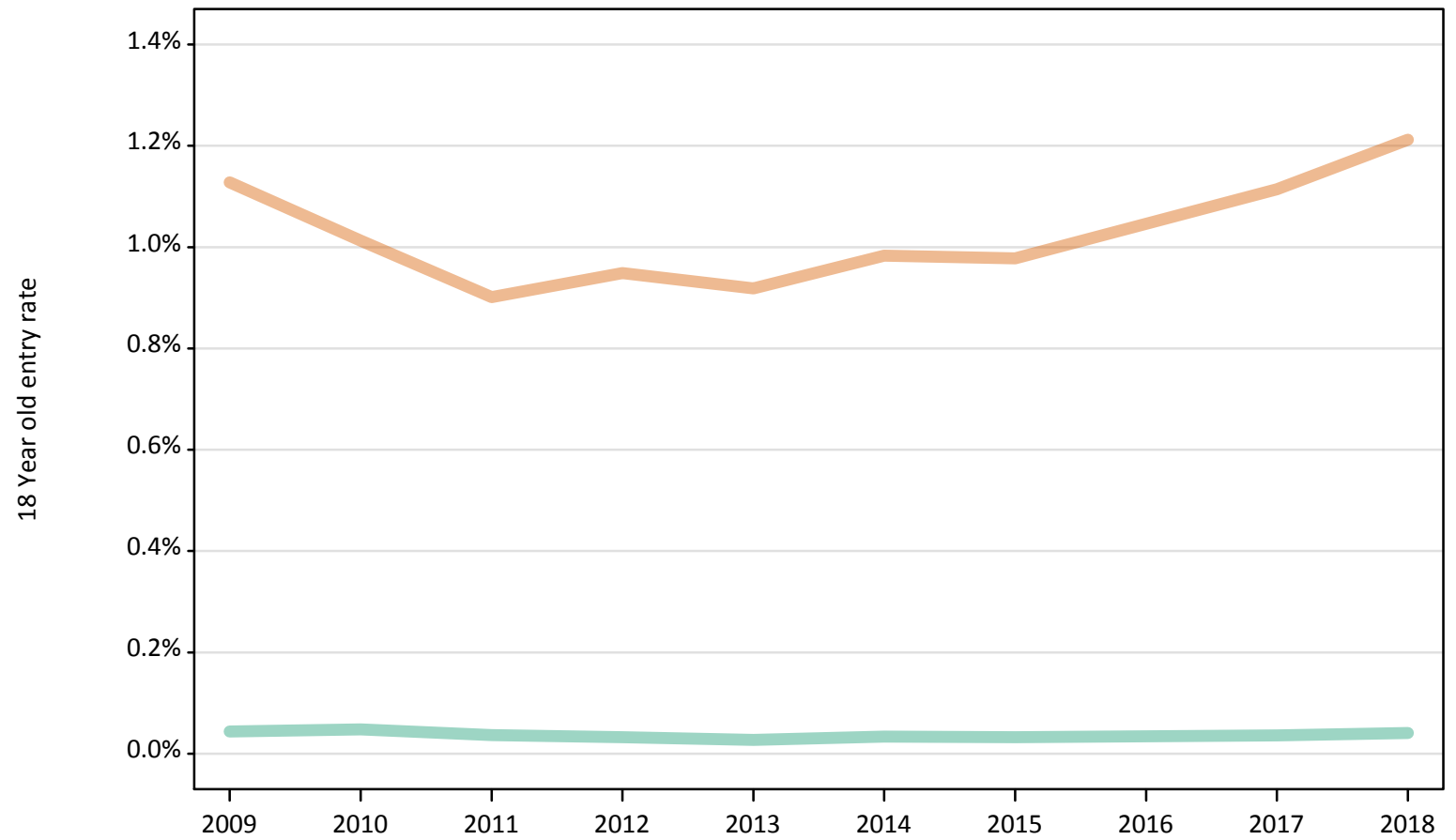
Placed 18 year old applicants to nursing: absolute change relative to 2017 cycle totals

Applicant Status	Sex	2009	2010	2011	2012	2013	2014	2015	2016	2017	2018
Placed	Men	40	50	10	-10	-30	-10	-10	0	0	10
	Women	280	-110	-550	-390	-540	-380	-320	-180	0	210
	All	320	-60	-550	-400	-560	-380	-330	-180	0	220

SB.24 Placed 18 year old applicants to nursing from England by sex: A level results day

Placed 18 year old applicants to nursing: entry rate

Men
Women



SB.25 Placed 18 year old applicants to nursing from England by sex: A level results day

Placed 18 year old applicants to nursing: entry rate

Applicant Status	Sex	2009	2010	2011	2012	2013	2014	2015	2016	2017	2018
Placed	Men	0.0%	0.0%	0.0%	0.0%	0.0%	0.0%	0.0%	0.0%	0.0%	0.0%
	Women	1.1%	1.0%	0.9%	0.9%	0.9%	1.0%	1.0%	1.0%	1.1%	1.2%
	All	0.6%	0.5%	0.5%	0.5%	0.5%	0.5%	0.5%	0.5%	0.6%	0.6%

SB.26 Placed 18 year old applicants to nursing from England by sex: A level results day

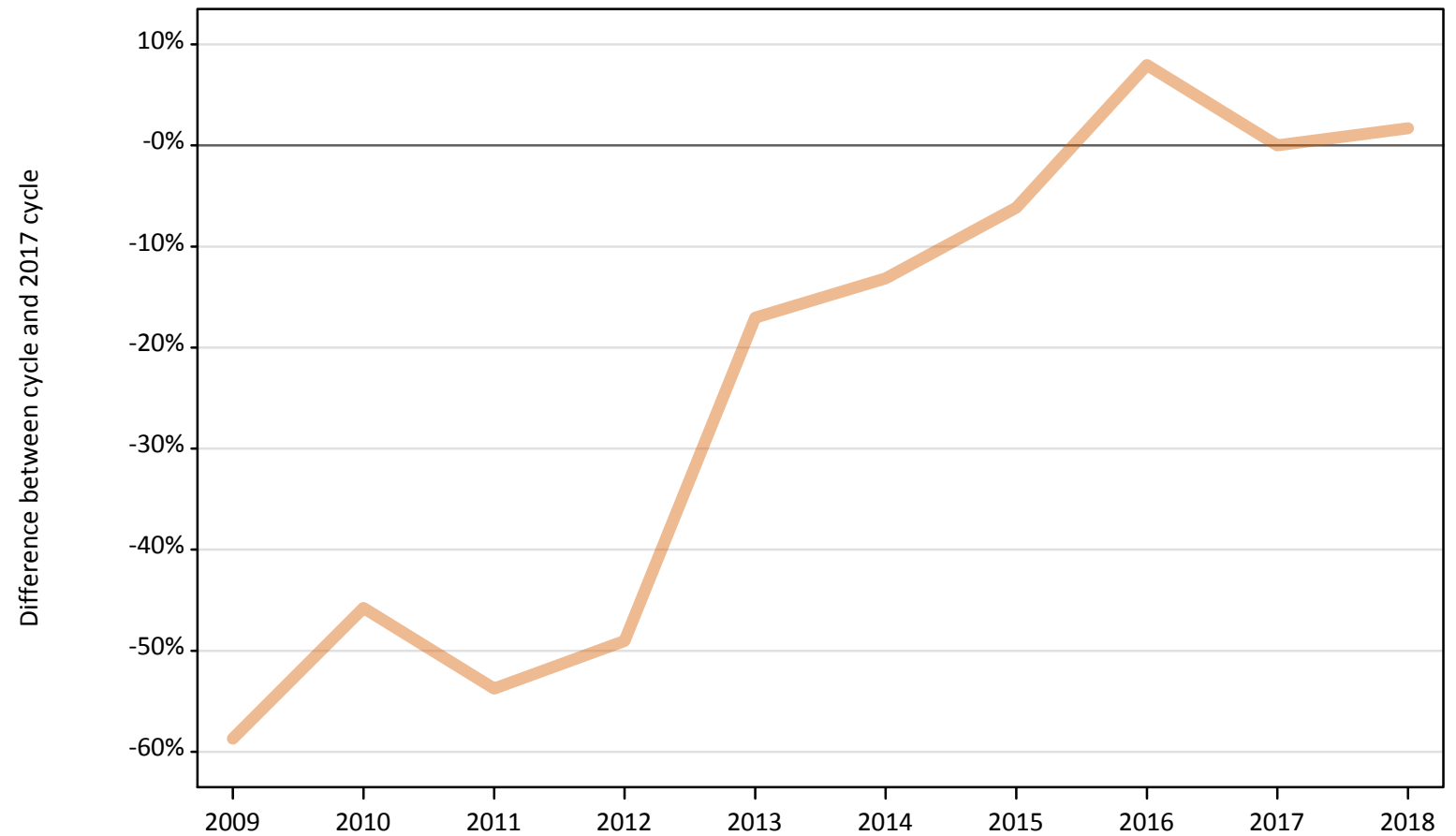
Placed 18 year old applicants to nursing: entry rate (indexed to 100 = Men)

Applicant Status	Sex	2009	2010	2011	2012	2013	2014	2015	2016	2017	2018
Placed	Men	100	100	100	100	100	100	100	100	100	100
	Women	2,576	2,102	2,473	2,892	3,336	2,896	2,985	3,015	3,099	2,982

SB.27 Placed applicants to nursing by sex from Northern Ireland by sex: A level results day

Placed applicants to nursing by sex: change relative to 2017 cycle totals

Men
Women



Note: The percentage change is not plotted in the above chart for groups with fewer than 30 placed applicants in any one cycle.

SB.28 Placed applicants to nursing by sex from Northern Ireland by sex: A level results day

Applicant Status	Sex	2009	2010	2011	2012	2013	2014	2015	2016	2017	2018
Placed	Men	30	30	30	30	50	60	50	90	70	70
	Women	340	450	380	420	690	720	780	890	830	840
	All	370	480	410	460	730	780	830	990	900	920

SB.29 Placed applicants to nursing by sex from Northern Ireland by sex: A level results day

Placed applicants to nursing by sex: change relative to 2017 cycle totals

Applicant Status	Sex	2009	2010	2011	2012	2013	2014	2015	2016	2017	2018
Placed	Men	-55%	-51%	-63%	-49%	-30%	-10%	-19%	39%	0%	9%
	Women	-59%	-46%	-54%	-49%	-17%	-13%	-6%	8%	0%	2%
	All	-58%	-46%	-54%	-49%	-18%	-13%	-7%	10%	0%	2%

Note: The percentage change is not recorded in the above table for groups with fewer than 10 placed applicants in that cycle or in the 2017 cycle.

SB.30 Placed applicants to nursing by sex from Northern Ireland by sex: A level results day

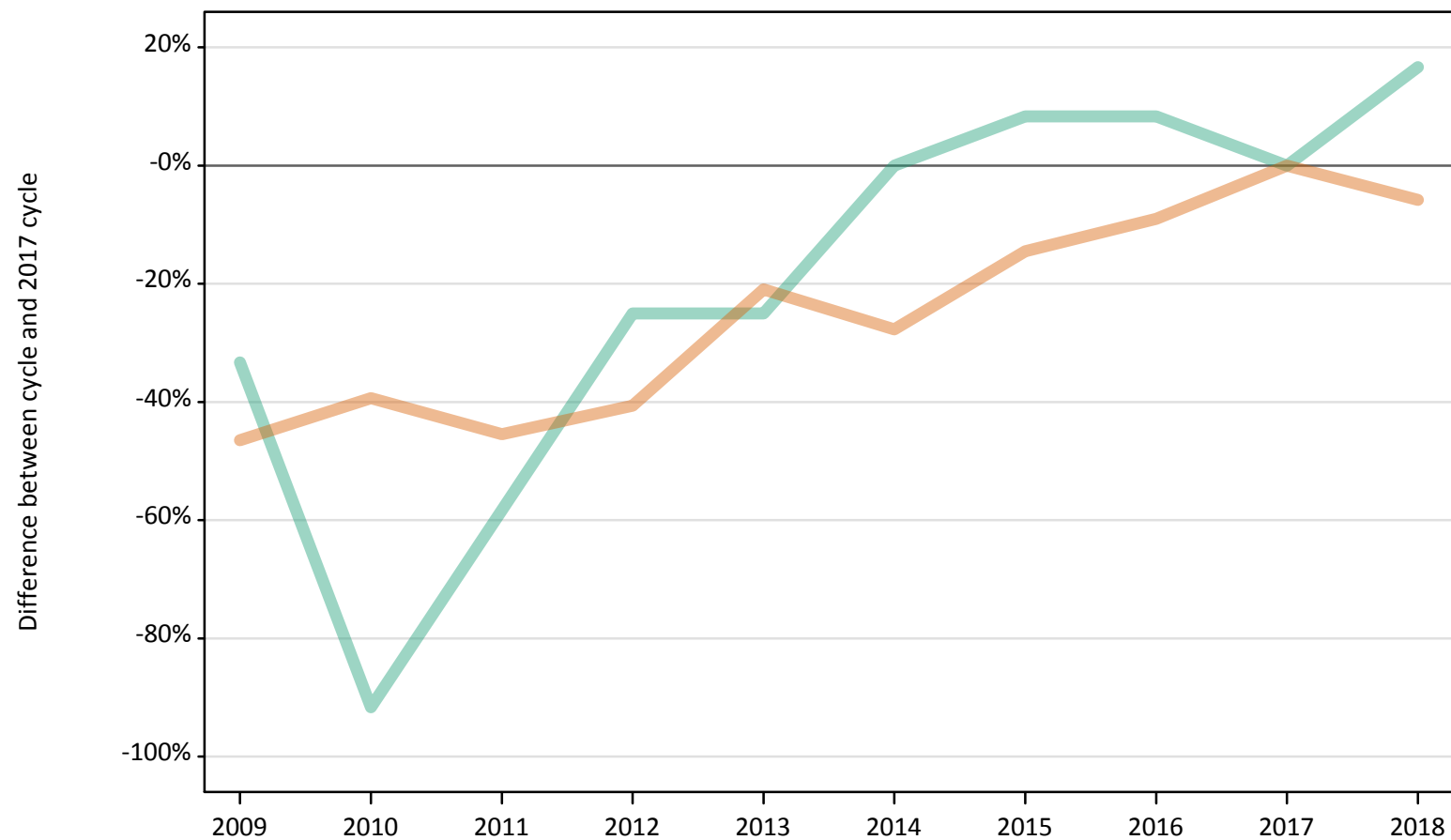
Placed applicants to nursing by sex: absolute change relative to 2017 cycle totals

Applicant Status	Sex	2009	2010	2011	2012	2013	2014	2015	2016	2017	2018
Placed	Men	-40	-30	-40	-30	-20	-10	-10	30	0	10
	Women	-490	-380	-450	-410	-140	-110	-50	70	0	10
	All	-520	-410	-490	-440	-160	-120	-60	90	0	20

SB.31 Placed 18 year old applicants to nursing from Northern Ireland by sex: A level results day

Placed 18 year old applicants to nursing: change relative to 2017 cycle totals

Men
Women



Note: The percentage change is not plotted in the above chart for groups with fewer than 30 placed applicants in any one cycle.

SB.32 Placed 18 year old applicants to nursing from Northern Ireland by sex: A level results day

Applicant Status	Sex	2009	2010	2011	2012	2013	2014	2015	2016	2017	2018
Placed	Men	10	0	10	10	10	10	10	10	10	10
	Women	170	190	170	180	250	220	270	280	310	290
	All	170	190	170	190	250	240	280	300	320	310

SB.33 Placed 18 year old applicants to nursing from Northern Ireland by sex: A level results day

Placed 18 year old applicants to nursing: change relative to 2017 cycle totals

Applicant Status	Sex	2009	2010	2011	2012	2013	2014	2015	2016	2017	2018
Placed	Men	-33%		-58%	-25%	-25%	0%	8%	8%	0%	17%
	Women	-46%	-39%	-45%	-41%	-21%	-28%	-15%	-9%	0%	-6%
	All	-46%	-41%	-46%	-40%	-21%	-27%	-14%	-8%	0%	-5%

Note: The percentage change is not recorded in the above table for groups with fewer than 10 placed applicants in that cycle or in the 2017 cycle.

SB.34 Placed 18 year old applicants to nursing from Northern Ireland by sex: A level results day

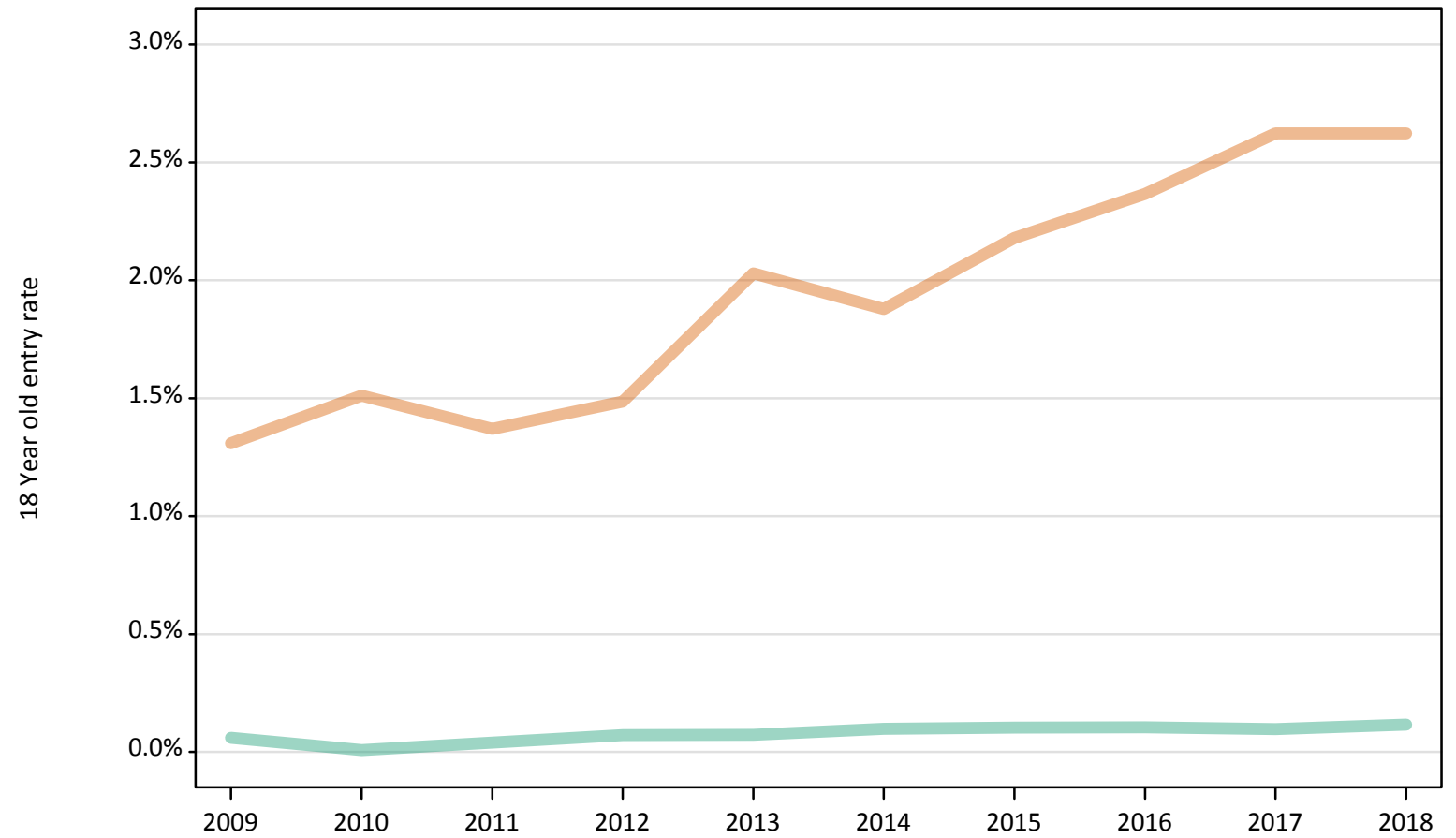
Placed 18 year old applicants to nursing: absolute change relative to 2017 cycle totals

Applicant Status	Sex	2009	2010	2011	2012	2013	2014	2015	2016	2017	2018
Placed	Men	0	-10	-10	0	0	0	0	0	0	0
	Women	-140	-120	-140	-130	-70	-90	-50	-30	0	-20
	All	-150	-130	-150	-130	-70	-90	-40	-30	0	-20

SB.35 Placed 18 year old applicants to nursing from Northern Ireland by sex: A level results day

Placed 18 year old applicants to nursing: entry rate

Men
Women



SB.36 Placed 18 year old applicants to nursing from Northern Ireland by sex: A level results day

Placed 18 year old applicants to nursing: entry rate

Applicant Status	Sex	2009	2010	2011	2012	2013	2014	2015	2016	2017	2018
Placed	Men	0.1%	0.0%	0.0%	0.1%	0.1%	0.1%	0.1%	0.1%	0.1%	0.1%
	Women	1.3%	1.5%	1.4%	1.5%	2.0%	1.9%	2.2%	2.4%	2.6%	2.6%
	All	0.7%	0.7%	0.7%	0.8%	1.0%	1.0%	1.1%	1.2%	1.3%	1.3%

SB.37 Placed 18 year old applicants to nursing from Northern Ireland by sex: A level results day

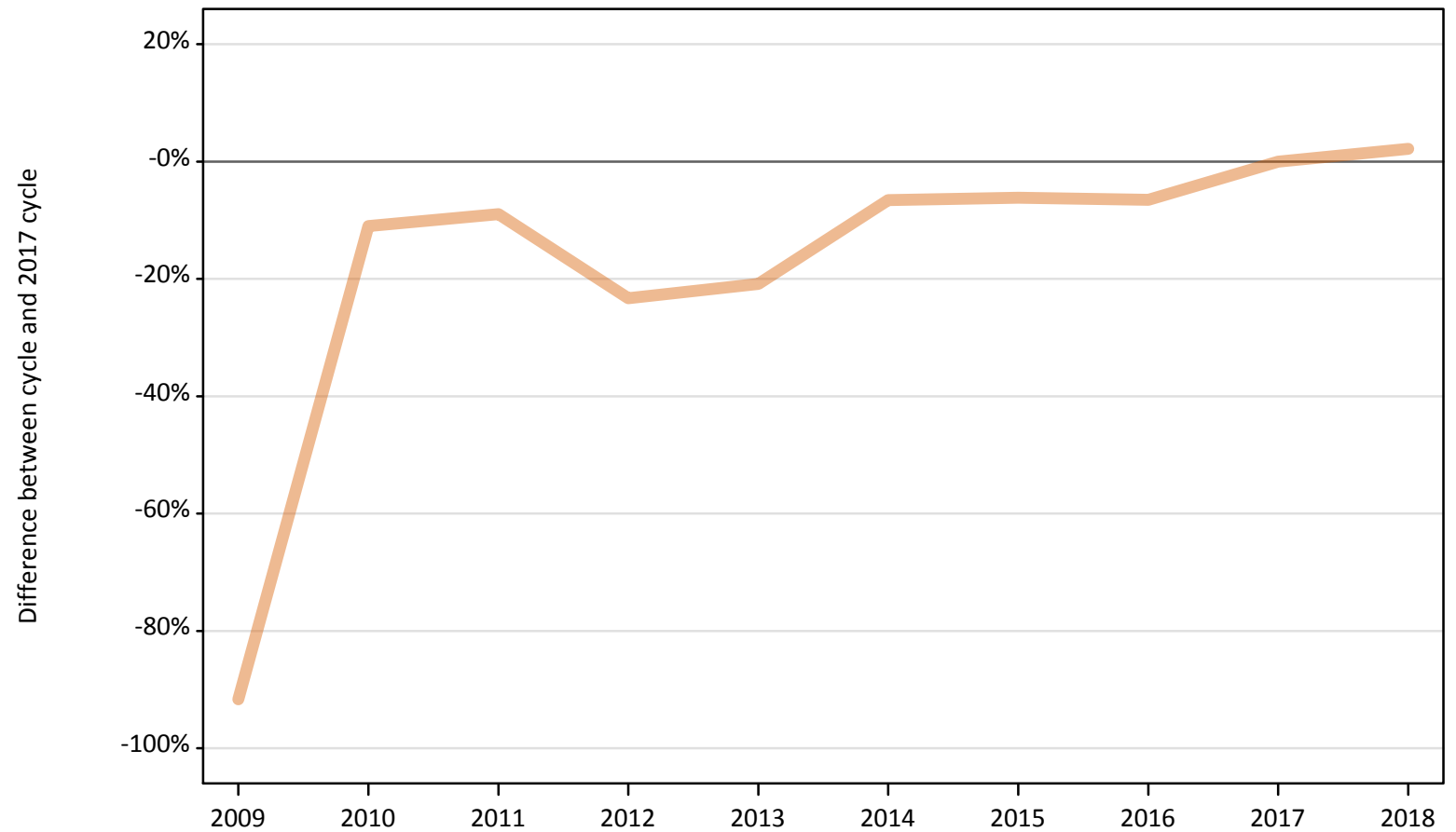
Placed 18 year old applicants to nursing: entry rate (indexed to 100 = Men)

Applicant Status	Sex	2009	2010	2011	2012	2013	2014	2015	2016	2017	2018
Placed	Men	100	100	100	100	100	100	100	100	100	100
	Women	2,178	19,755	3,467	2,105	2,803	1,932	2,125	2,281	2,705	2,259

SB.38 Placed applicants to nursing by sex from Scotland by sex: A level results day

Placed applicants to nursing by sex: change relative to 2017 cycle totals

Men
Women



Note: The percentage change is not plotted in the above chart for groups with fewer than 30 placed applicants in any one cycle.

SB.39 Placed applicants to nursing by sex from Scotland by sex: A level results day

Applicant Status	Sex	2009	2010	2011	2012	2013	2014	2015	2016	2017	2018
Placed	Men	30	260	210	170	210	220	220	230	230	220
	Women	220	2,310	2,370	1,990	2,060	2,430	2,440	2,430	2,600	2,660
	All	240	2,570	2,580	2,160	2,260	2,650	2,660	2,660	2,820	2,870

SB.40 Placed applicants to nursing by sex from Scotland by sex: A level results day

Placed applicants to nursing by sex: change relative to 2017 cycle totals

Applicant Status	Sex	2009	2010	2011	2012	2013	2014	2015	2016	2017	2018
Placed	Men	-88%	16%	-5%	-25%	-8%	-3%	-4%	4%	0%	-4%
	Women	-92%	-11%	-9%	-23%	-21%	-7%	-6%	-7%	0%	2%
	All	-91%	-9%	-9%	-23%	-20%	-6%	-6%	-6%	0%	2%

Note: The percentage change is not recorded in the above table for groups with fewer than 10 placed applicants in that cycle or in the 2017 cycle.

SB.41 Placed applicants to nursing by sex from Scotland by sex: A level results day

Placed applicants to nursing by sex: absolute change relative to 2017 cycle totals

Applicant Status	Sex	2009	2010	2011	2012	2013	2014	2015	2016	2017	2018
Placed	Men	-200	40	-10	-60	-20	-10	-10	10	0	-10
	Women	-2,380	-290	-230	-610	-540	-170	-160	-170	0	60
	All	-2,580	-250	-240	-660	-560	-180	-170	-160	0	50

SB.42 Placed 18 year old applicants to nursing from Scotland by sex: A level results day

Placed 18 year old applicants to nursing: change relative to 2017 cycle totals

Men
Women



Note: The percentage change is not plotted in the above chart for groups with fewer than 30 placed applicants in any one cycle.

SB.43 Placed 18 year old applicants to nursing from Scotland by sex: A level results day

Applicant Status	Sex	2009	2010	2011	2012	2013	2014	2015	2016	2017	2018
Placed	Men	0	30	20	20	20	30	20	30	10	10
	Women	100	560	510	500	470	540	560	540	590	520
	All	100	600	530	520	490	570	580	570	600	530

SB.44 Placed 18 year old applicants to nursing from Scotland by sex: A level results day

Placed 18 year old applicants to nursing: change relative to 2017 cycle totals

Applicant Status	Sex	2009	2010	2011	2012	2013	2014	2015	2016	2017	2018
Placed	Men		143%	21%	29%	71%	100%	36%	93%	0%	-14%
	Women	-83%	-4%	-13%	-15%	-20%	-8%	-4%	-8%	0%	-12%
	All	-83%	-0%	-12%	-14%	-18%	-5%	-3%	-6%	0%	-12%

Note: The percentage change is not recorded in the above table for groups with fewer than 10 placed applicants in that cycle or in the 2017 cycle.

SB.45 Placed 18 year old applicants to nursing from Scotland by sex: A level results day

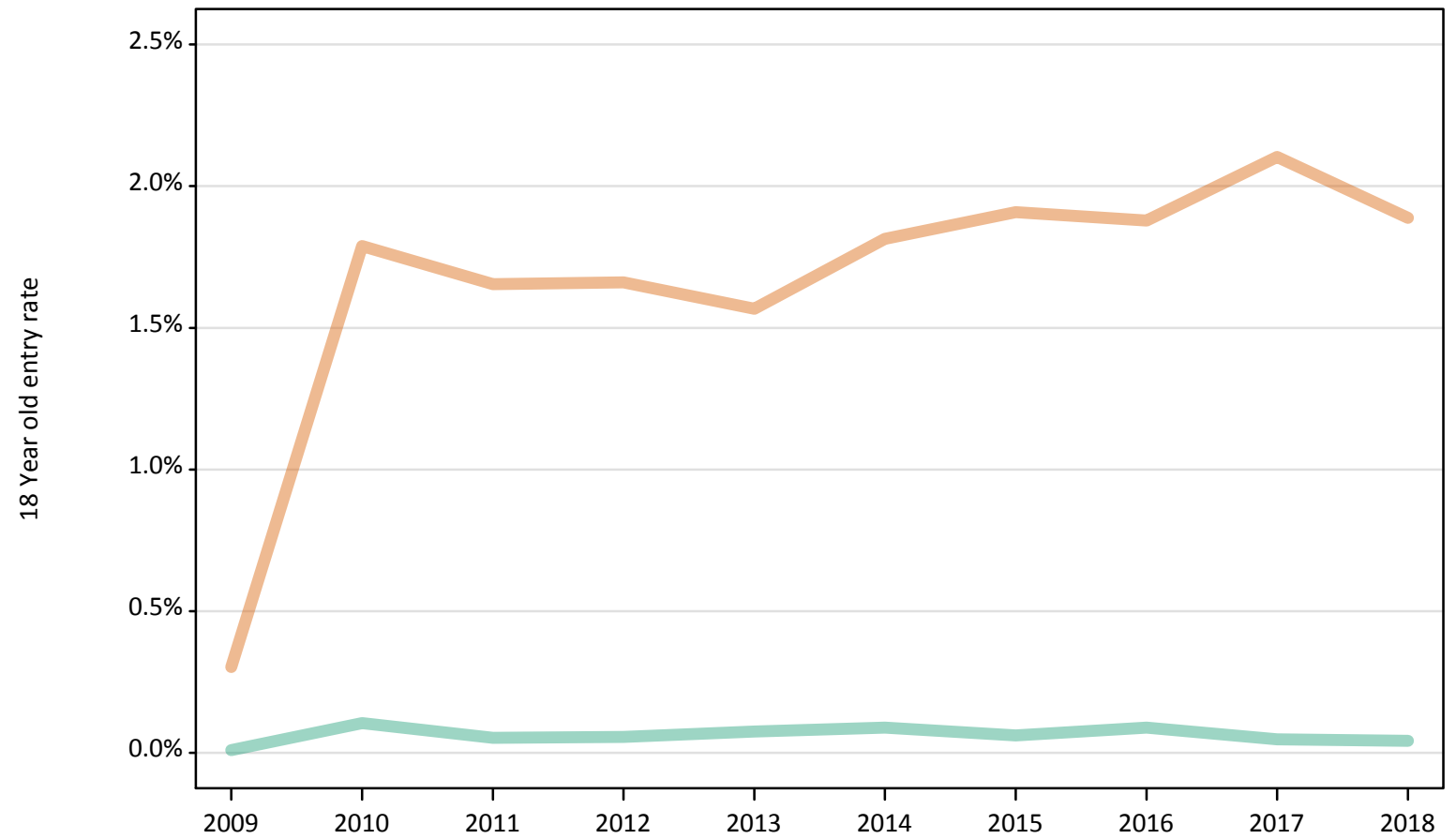
Placed 18 year old applicants to nursing: absolute change relative to 2017 cycle totals

Applicant Status	Sex	2009	2010	2011	2012	2013	2014	2015	2016	2017	2018
Placed	Men	-10	20	0	0	10	10	10	10	0	0
	Women	-490	-20	-80	-90	-120	-50	-30	-50	0	-70
	All	-500	0	-70	-80	-110	-30	-20	-30	0	-70

SB.46 Placed 18 year old applicants to nursing from Scotland by sex: A level results day

Placed 18 year old applicants to nursing: entry rate

Men
Women



SB.47 Placed 18 year old applicants to nursing from Scotland by sex: A level results day

Placed 18 year old applicants to nursing: entry rate

Applicant Status	Sex	2009	2010	2011	2012	2013	2014	2015	2016	2017	2018
Placed	Men	0.0%	0.1%	0.1%	0.1%	0.1%	0.1%	0.1%	0.1%	0.0%	0.0%
	Women	0.3%	1.8%	1.7%	1.7%	1.6%	1.8%	1.9%	1.9%	2.1%	1.9%
	All	0.2%	0.9%	0.8%	0.8%	0.8%	0.9%	1.0%	1.0%	1.0%	1.0%

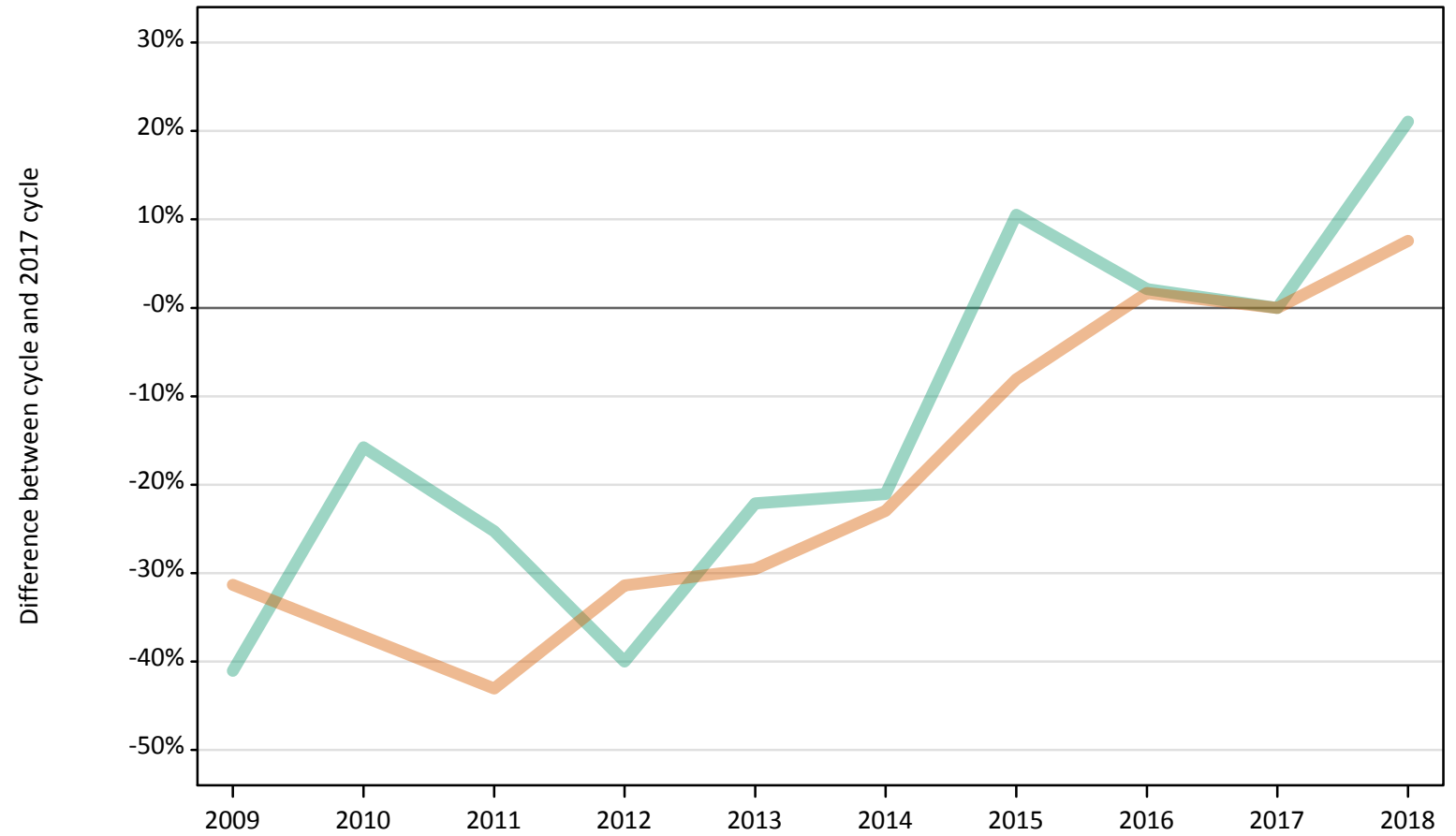
SB.48 Placed 18 year old applicants to nursing from Scotland by sex: A level results day

Placed 18 year old applicants to nursing: entry rate (indexed to 100 = Men)

Applicant Status	Sex	2009	2010	2011	2012	2013	2014	2015	2016	2017	2018
Placed	Men	100	100	100	100	100	100	100	100	100	100
	Women	3,304	1,704	3,128	2,936	2,079	2,041	3,096	2,100	4,435	4,444

SB.49 Placed applicants to nursing by sex from Wales by sex: A level results day
Placed applicants to nursing by sex: change relative to 2017 cycle totals

Men
Women



Note: The percentage change is not plotted in the above chart for groups with fewer than 30 placed applicants in any one cycle.

SB.50 Placed applicants to nursing by sex from Wales by sex: A level results day

Applicant Status	Sex	2009	2010	2011	2012	2013	2014	2015	2016	2017	2018
Placed	Men	60	80	70	60	70	80	110	100	100	120
	Women	770	710	640	770	790	870	1,030	1,140	1,120	1,210
	All	830	790	710	830	870	940	1,140	1,240	1,220	1,320

SB.51 Placed applicants to nursing by sex from Wales by sex: A level results day

Placed applicants to nursing by sex: change relative to 2017 cycle totals

Applicant Status	Sex	2009	2010	2011	2012	2013	2014	2015	2016	2017	2018
Placed	Men	-41%	-16%	-25%	-40%	-22%	-21%	11%	2%	0%	21%
	Women	-31%	-37%	-43%	-31%	-30%	-23%	-8%	2%	0%	8%
	All	-32%	-36%	-42%	-32%	-29%	-23%	-7%	2%	0%	9%

Note: The percentage change is not recorded in the above table for groups with fewer than 10 placed applicants in that cycle or in the 2017 cycle.

SB.52 Placed applicants to nursing by sex from Wales by sex: A level results day

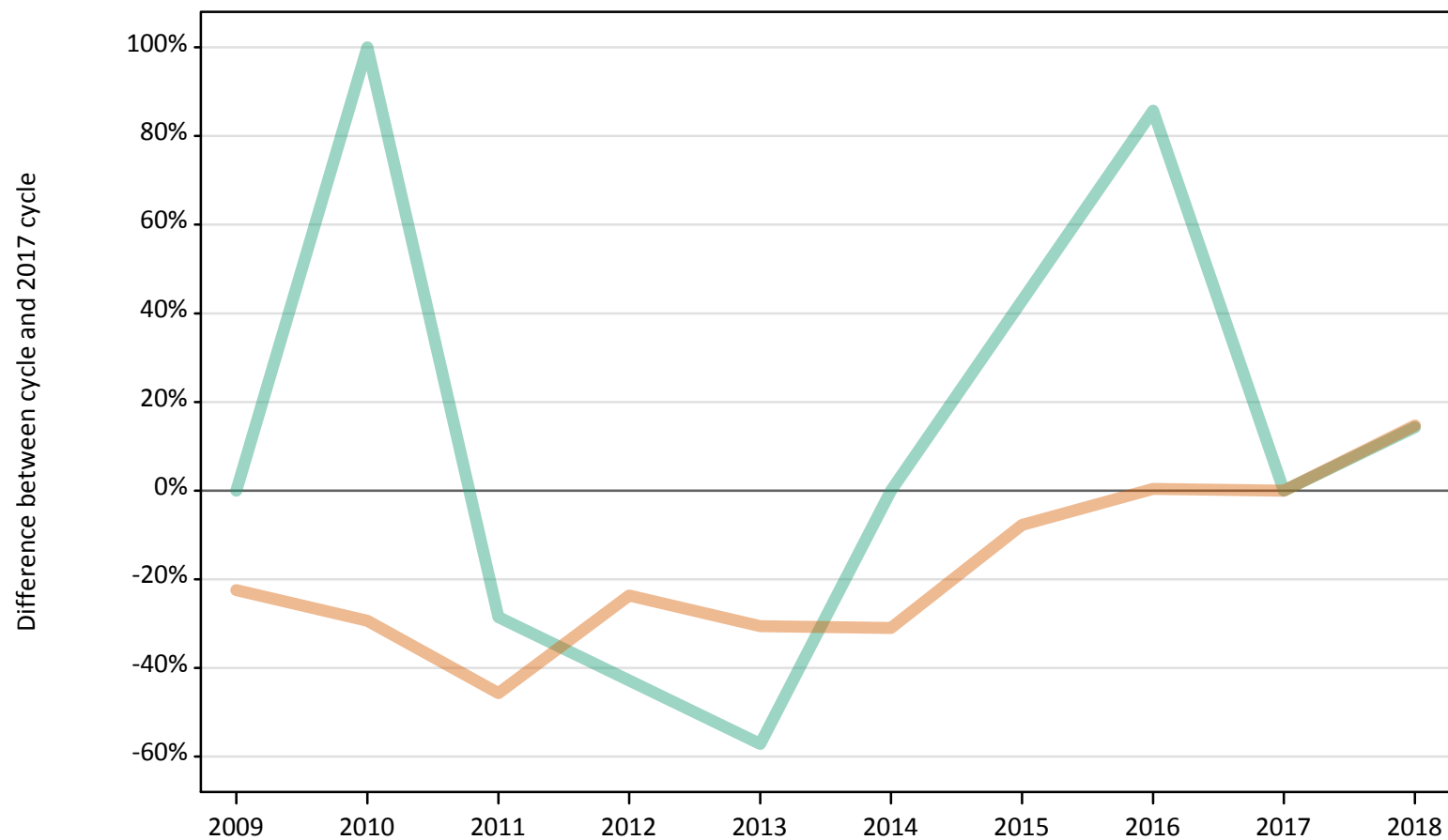
Placed applicants to nursing by sex: absolute change relative to 2017 cycle totals

Applicant Status	Sex	2009	2010	2011	2012	2013	2014	2015	2016	2017	2018
Placed	Men	-40	-20	-20	-40	-20	-20	10	0	0	20
	Women	-350	-420	-480	-350	-330	-260	-90	20	0	90
	All	-390	-430	-510	-390	-350	-280	-80	20	0	110

SB.53 Placed 18 year old applicants to nursing from Wales by sex: A level results day

Placed 18 year old applicants to nursing: change relative to 2017 cycle totals

Men
Women



Note: The percentage change is not plotted in the above chart for groups with fewer than 30 placed applicants in any one cycle.

SB.54 Placed 18 year old applicants to nursing from Wales by sex: A level results day

Applicant Status	Sex	2009	2010	2011	2012	2013	2014	2015	2016	2017	2018
Placed	Men	10	10	10	0	0	10	10	10	10	10
	Women	190	170	130	190	170	170	230	250	250	280
	All	200	190	140	190	170	180	240	260	250	290

SB.55 Placed 18 year old applicants to nursing from Wales by sex: A level results day

Placed 18 year old applicants to nursing: change relative to 2017 cycle totals

Applicant Status	Sex	2009	2010	2011	2012	2013	2014	2015	2016	2017	2018
Placed	Men	0%	100%	-29%			0%	43%	86%	0%	14%
	Women	-22%	-29%	-46%	-24%	-31%	-31%	-8%	0%	0%	15%
	All	-22%	-26%	-45%	-24%	-31%	-30%	-6%	3%	0%	15%

Note: The percentage change is not recorded in the above table for groups with fewer than 10 placed applicants in that cycle or in the 2017 cycle.

SB.56 Placed 18 year old applicants to nursing from Wales by sex: A level results day

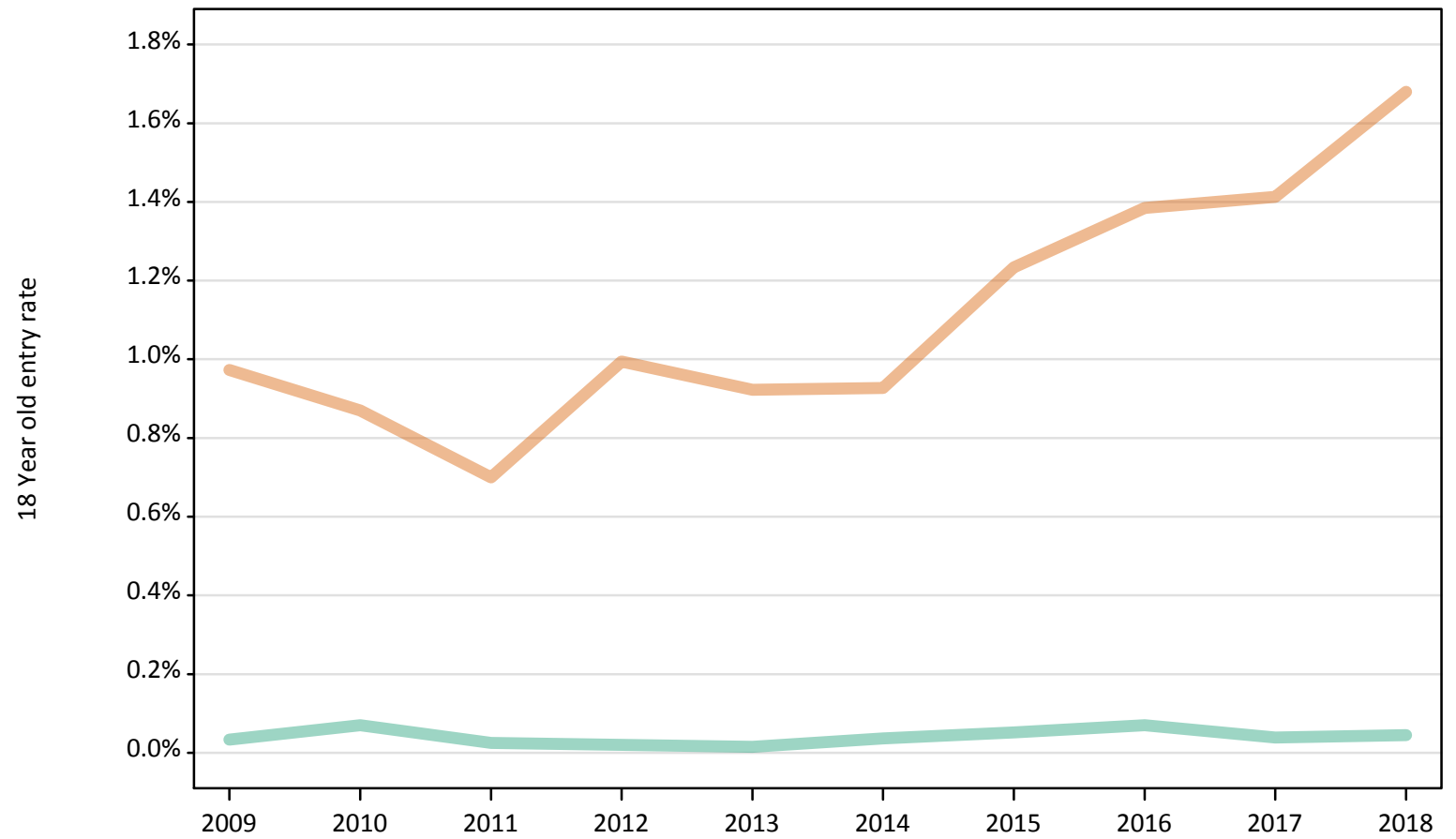
Placed 18 year old applicants to nursing: absolute change relative to 2017 cycle totals

Applicant Status	Sex	2009	2010	2011	2012	2013	2014	2015	2016	2017	2018
Placed	Men	0	10	0	0	0	0	0	10	0	0
	Women	-60	-70	-110	-60	-80	-80	-20	0	0	40
	All	-60	-70	-110	-60	-80	-80	-20	10	0	40

SB.57 Placed 18 year old applicants to nursing from Wales by sex: A level results day

Placed 18 year old applicants to nursing: entry rate

Men
Women



SB.58 Placed 18 year old applicants to nursing from Wales by sex: A level results day

Placed 18 year old applicants to nursing: entry rate

Applicant Status	Sex	2009	2010	2011	2012	2013	2014	2015	2016	2017	2018
Placed	Men	0.0%	0.1%	0.0%	0.0%	0.0%	0.0%	0.1%	0.1%	0.0%	0.0%
	Women	1.0%	0.9%	0.7%	1.0%	0.9%	0.9%	1.2%	1.4%	1.4%	1.7%
	All	0.5%	0.5%	0.4%	0.5%	0.5%	0.5%	0.6%	0.7%	0.7%	0.8%

SB.59 Placed 18 year old applicants to nursing from Wales by sex: A level results day

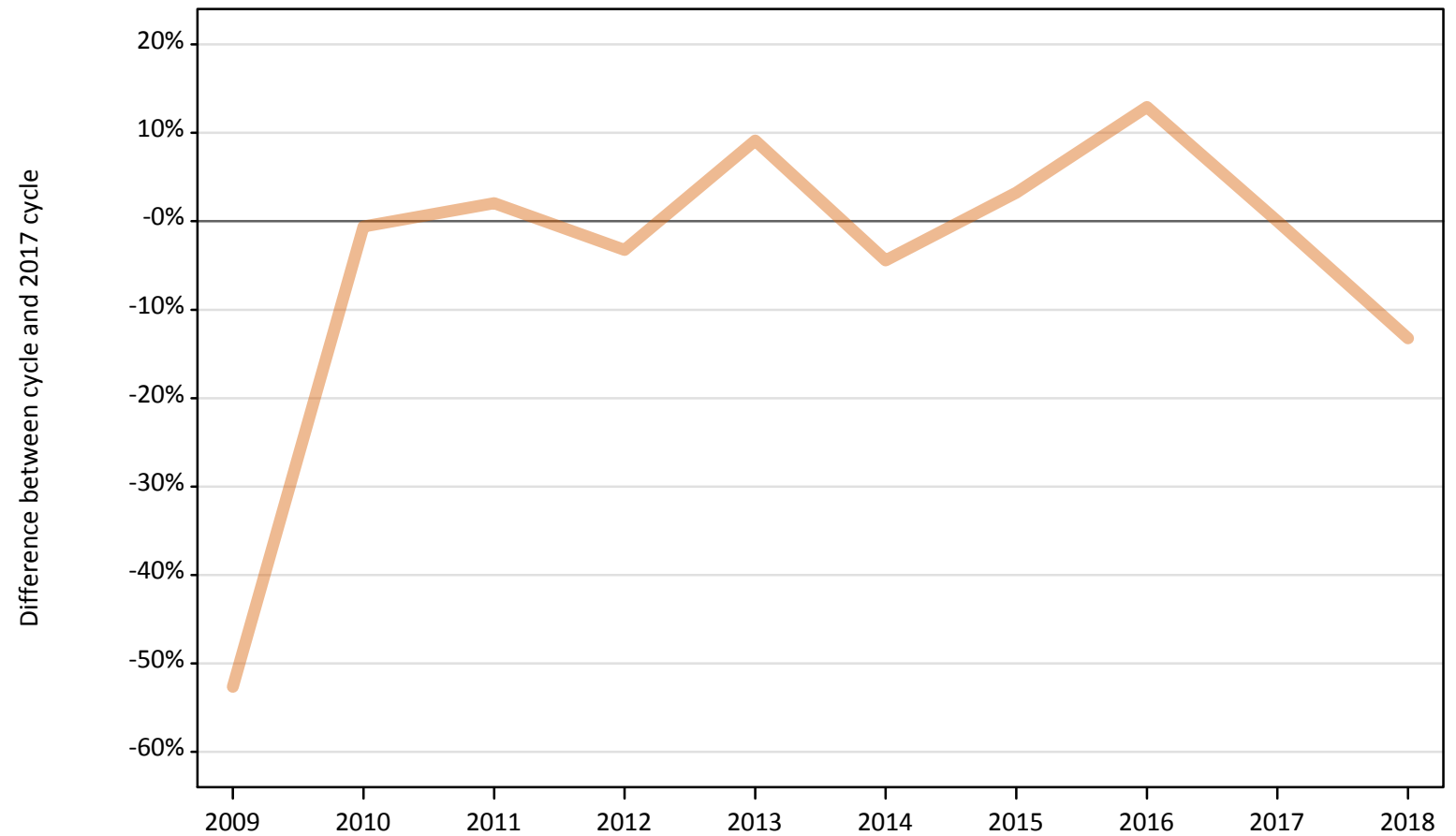
Placed 18 year old applicants to nursing: entry rate (indexed to 100 = Men)

Applicant Status	Sex	2009	2010	2011	2012	2013	2014	2015	2016	2017	2018
Placed	Men	100	100	100	100	100	100	100	100	100	100
	Women	2,890	1,242	2,744	4,912	5,955	2,550	2,389	1,975	3,670	3,710

SB.60 Placed applicants to nursing by sex from the EU (excluding the UK) by sex: A level results day

Placed applicants to nursing by sex: change relative to 2017 cycle totals

Men
Women



Note: The percentage change is not plotted in the above chart for groups with fewer than 30 placed applicants in any one cycle.

SB.61 Placed applicants to nursing by sex from the EU (excluding the UK) by sex: A level results day

Applicant Status	Sex	2009	2010	2011	2012	2013	2014	2015	2016	2017	2018
Placed	Men	20	40	50	20	40	40	30	50	30	40
	Women	160	340	350	330	370	330	350	380	340	300
	All	180	380	400	350	420	360	380	430	370	330

SB.62 Placed applicants to nursing by sex from the EU (excluding the UK) by sex: A level results day

Placed applicants to nursing by sex: change relative to 2017 cycle totals

Applicant Status	Sex	2009	2010	2011	2012	2013	2014	2015	2016	2017	2018
Placed	Men	-34%	34%	66%	-31%	52%	24%	14%	55%	0%	21%
	Women	-53%	-1%	2%	-3%	9%	-4%	3%	13%	0%	-13%
	All	-51%	2%	7%	-5%	12%	-2%	4%	16%	0%	-11%

Note: The percentage change is not recorded in the above table for groups with fewer than 10 placed applicants in that cycle or in the 2017 cycle.

SB.63 Placed applicants to nursing by sex from the EU (excluding the UK) by sex: A level results day

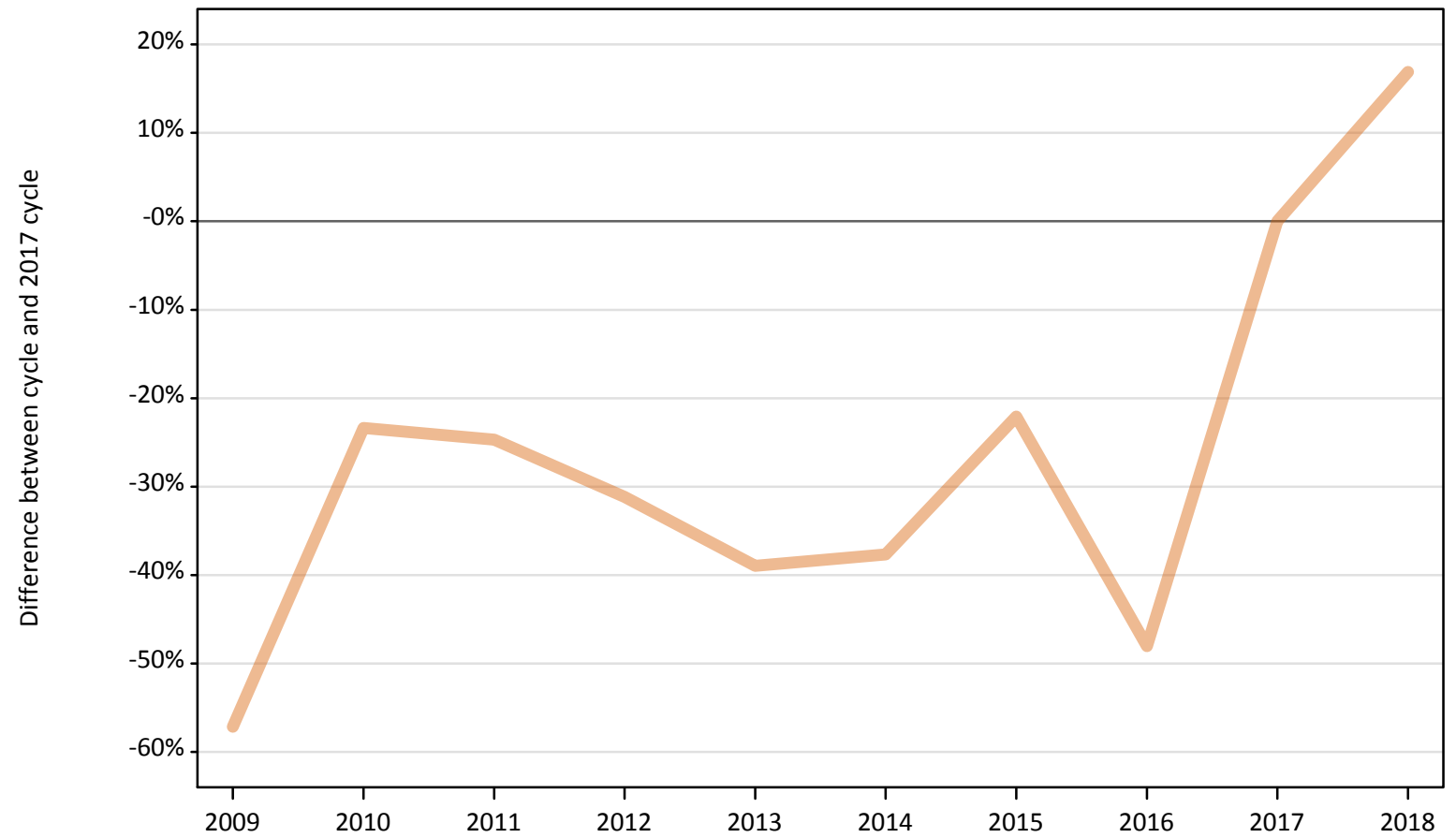
Placed applicants to nursing by sex: absolute change relative to 2017 cycle totals

Applicant Status	Sex	2009	2010	2011	2012	2013	2014	2015	2016	2017	2018
Placed	Men	-10	10	20	-10	20	10	0	20	0	10
	Women	-180	0	10	-10	30	-20	10	40	0	-50
	All	-190	10	30	-20	50	-10	20	60	0	-40

SB.64 Placed applicants to nursing by sex from overseas (not EU) by sex: A level results day

Placed applicants to nursing by sex: change relative to 2017 cycle totals

Men
Women



Note: The percentage change is not plotted in the above chart for groups with fewer than 30 placed applicants in any one cycle.

SB.65 Placed applicants to nursing by sex from overseas (not EU) by sex: A level results day

Applicant Status	Sex	2009	2010	2011	2012	2013	2014	2015	2016	2017	2018
Placed	Men	10	10	10	10	0	0	10	10	10	10
	Women	30	60	60	50	50	50	60	40	80	90
	All	40	70	70	60	50	50	70	50	80	100

SB.66 Placed applicants to nursing by sex from overseas (not EU) by sex: A level results day

Placed applicants to nursing by sex: change relative to 2017 cycle totals

Applicant Status	Sex	2009	2010	2011	2012	2013	2014	2015	2016	2017	2018
Placed	Men	-14%	57%	0%	-29%			0%	0%	0%	29%
	Women	-57%	-23%	-25%	-31%	-39%	-38%	-22%	-48%	0%	17%
	All	-54%	-17%	-23%	-31%	-43%	-38%	-20%	-44%	0%	18%

Note: The percentage change is not recorded in the above table for groups with fewer than 10 placed applicants in that cycle or in the 2017 cycle.

SB.67 Placed applicants to nursing by sex from overseas (not EU) by sex: A level results day

Placed applicants to nursing by sex: absolute change relative to 2017 cycle totals

Applicant Status	Sex	2009	2010	2011	2012	2013	2014	2015	2016	2017	2018
Placed	Men	0	0	0	0	-10	0	0	0	0	0
	Women	-40	-20	-20	-20	-30	-30	-20	-40	0	10
	All	-50	-10	-20	-30	-40	-30	-20	-40	0	20