

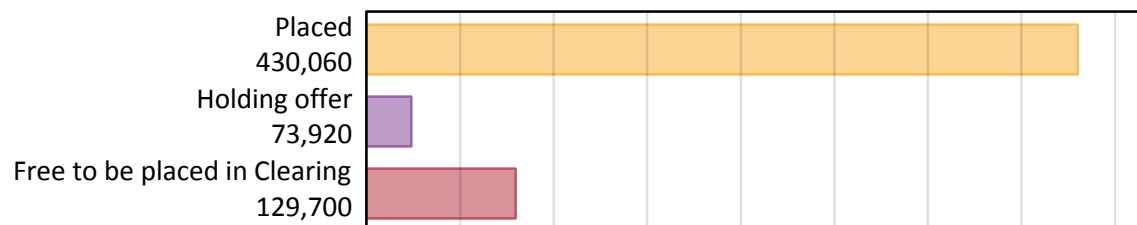
Daily Clearing Analysis: Overview

Analysis at 00:05 on Friday 17 August 2018 (1 day after A level results day)

A.1 Applicants by type and status from all domiciles, 2018 cycle

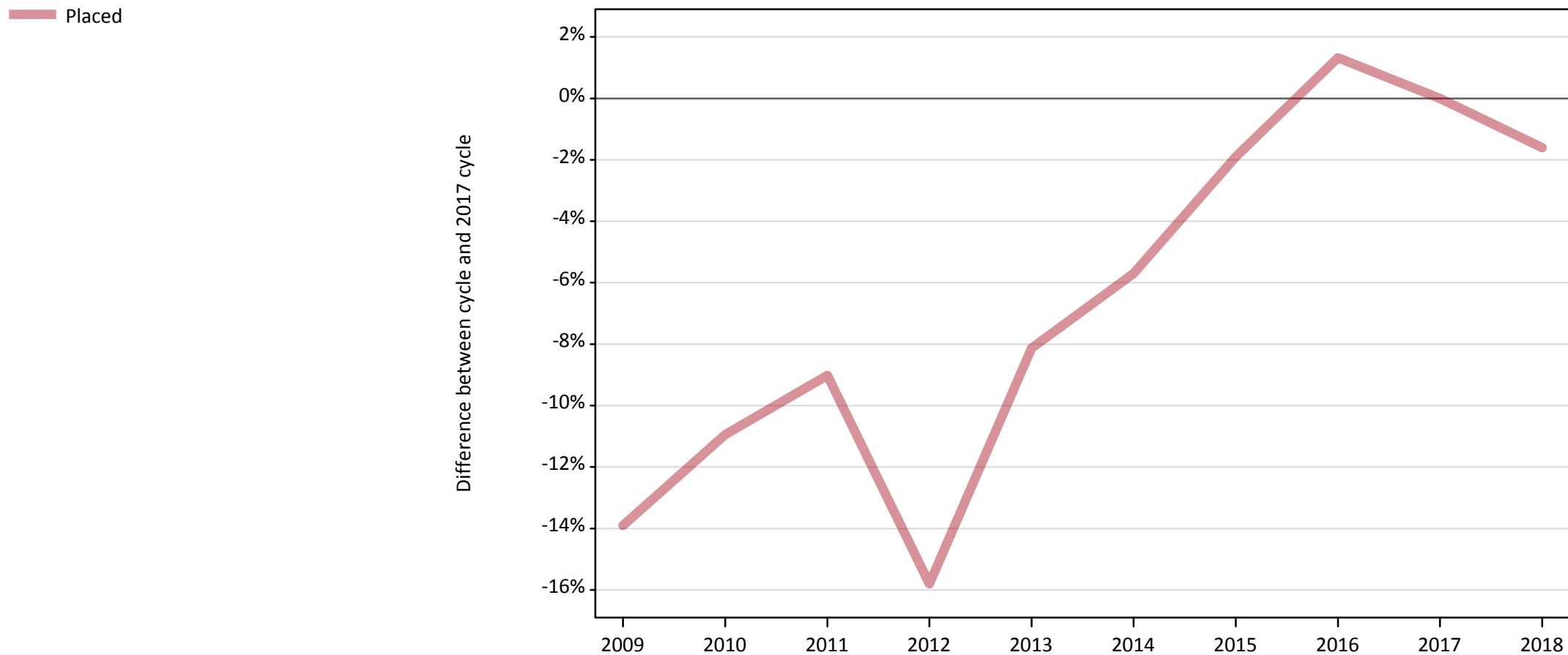
Applicant type	Status	2018
Main scheme	Placed (Clearing)	10,950
	Placed (Adjustment)	350
	Placed (Firm)	370,280
	Placed (Insurance)	31,510
	Placed (Other)	12,770
	Holding offer	73,920
	Free to be placed in Clearing	129,700
Direct to Clearing	Placed (Direct to Clearing)	4,210
	Other (Direct to Clearing)	8,790
All applicants	Placed	430,060

A.2 Summary of applicants who are placed, holding offers or free to be placed in Clearing (all domiciles)



A.3 All placed applicants from all domiciles: 1 day after A level results day

All placed applicants: difference between cycle and 2017 cycle



Note: The percentage change is not plotted in the above chart for groups with fewer than 30 placed applicants in any one cycle.

A.4 All placed applicants from all domiciles: 1 day after A level results day

All placed applicants: applicants at 1 day after A level results day

Applicant type	Status	2009	2010	2011	2012	2013	2014	2015	2016	2017	2018
All applicants	Placed	376,320	389,240	397,660	368,020	401,540	412,170	428,760	442,870	437,070	430,060

A.5 All placed applicants from all domiciles: 1 day after A level results day

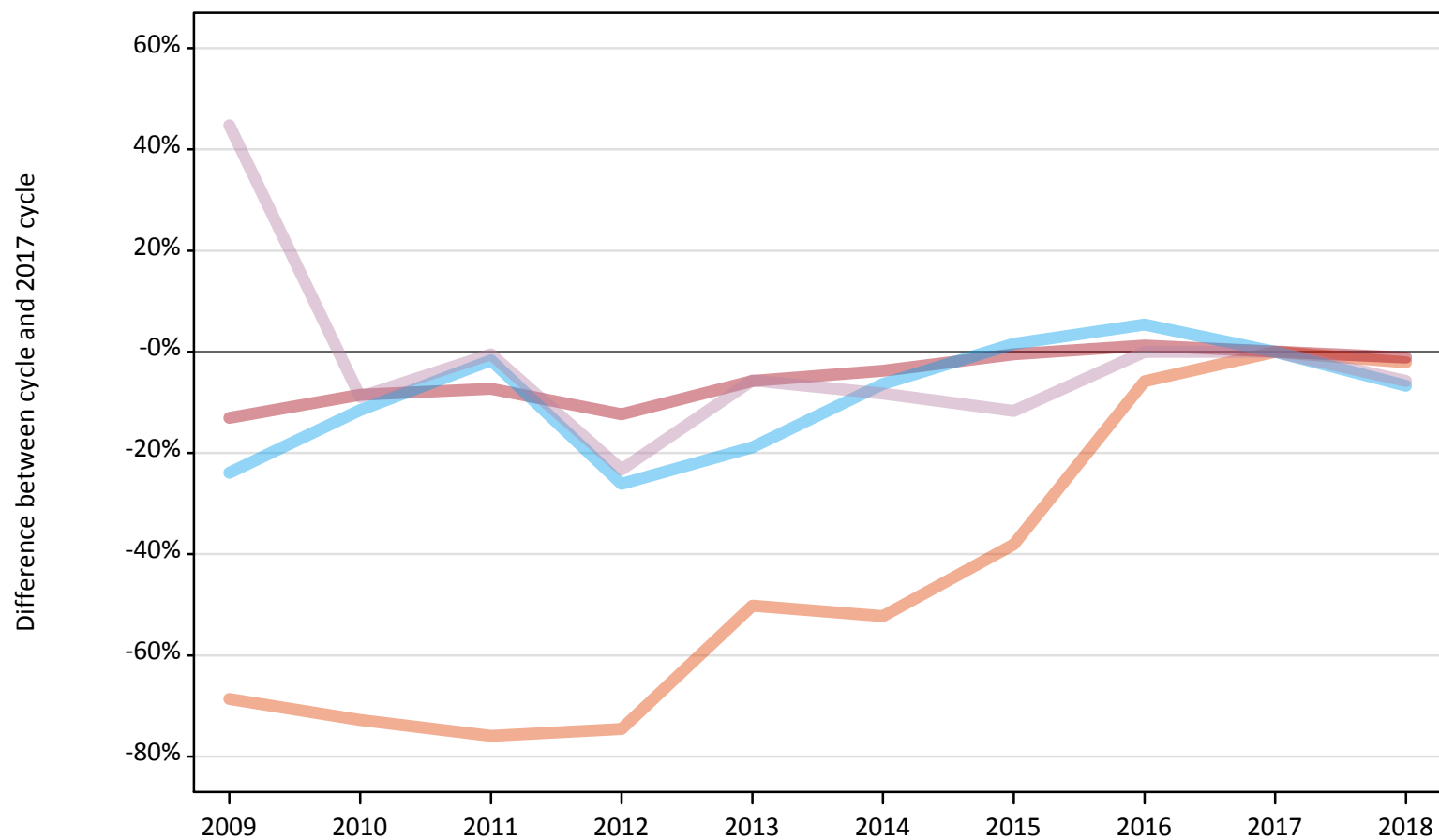
All placed applicants: difference between cycle and 2017 cycle

Applicant type	Status	2009	2010	2011	2012	2013	2014	2015	2016	2017	2018
All applicants	Placed	-14%	-11%	-9%	-16%	-8%	-6%	-2%	1%	0%	-2%

Note: The percentage change is not recorded in the above table for groups with fewer than 10 placed applicants in that cycle or in the 2017 cycle.

A.6 Placed main scheme applicants from all domiciles: 1 day after A level results day
All Main scheme placed routes (excluding Adjustment): difference between cycle and 2017 cycle

- Placed (Clearing)
- Placed (Firm)
- Placed (Insurance)
- Placed (Other)



Note: The percentage change is not plotted in the above chart for groups with fewer than 30 placed applicants in any one cycle.

A.7 Placed main scheme applicants from all domiciles: 1 day after A level results day

All Main scheme placed routes (excluding Adjustment): applicants at 1 day after A level results day

Applicant type	Status	2009	2010	2011	2012	2013	2014	2015	2016	2017	2018
Main scheme	Placed (Clearing)	3,510	3,050	2,690	2,850	5,570	5,340	6,930	10,540	11,180	10,950
	Placed (Firm)	325,720	342,890	347,200	328,330	353,080	360,500	372,780	379,270	374,550	370,280
	Placed (Insurance)	25,700	29,890	33,220	24,970	27,410	31,640	34,320	35,610	33,780	31,510
	Placed (Other)	19,620	12,350	13,480	10,400	12,790	12,430	11,970	13,550	13,550	12,770

A.8 Placed main scheme applicants from all domiciles: 1 day after A level results day

All Main scheme placed routes (excluding Adjustment): difference between cycle and 2017 cycle

Applicant type	Status	2009	2010	2011	2012	2013	2014	2015	2016	2017	2018
Main scheme	Placed (Clearing)	-69%	-73%	-76%	-75%	-50%	-52%	-38%	-6%	0%	-2%
	Placed (Firm)	-13%	-8%	-7%	-12%	-6%	-4%	-0%	1%	0%	-1%
	Placed (Insurance)	-24%	-12%	-2%	-26%	-19%	-6%	2%	5%	0%	-7%
	Placed (Other)	45%	-9%	-0%	-23%	-6%	-8%	-12%	-0%	0%	-6%

Note: The percentage change is not recorded in the above table for groups with fewer than 10 placed applicants in that cycle or in the 2017 cycle.

A.9 Main scheme applicants placed through adjustment: 1 day after A level results day

Placed through adjustment: difference between cycle and 2017 cycle

Placed (Adjustment)



Note: The percentage change is not plotted in the above chart for groups with fewer than 30 placed applicants in any one cycle.

A.10 Main scheme applicants placed through adjustment: 1 day after A level results day

Placed through adjustment: applicants at 1 day after A level results day

Applicant type	Status	2009	2010	2011	2012	2013	2014	2015	2016	2017	2018
Main scheme	Placed (Adjustment)	50	20	60	140	300	320	390	290	390	350

A.11 Main scheme applicants placed through adjustment: 1 day after A level results day

Placed through adjustment: difference between cycle and 2017 cycle

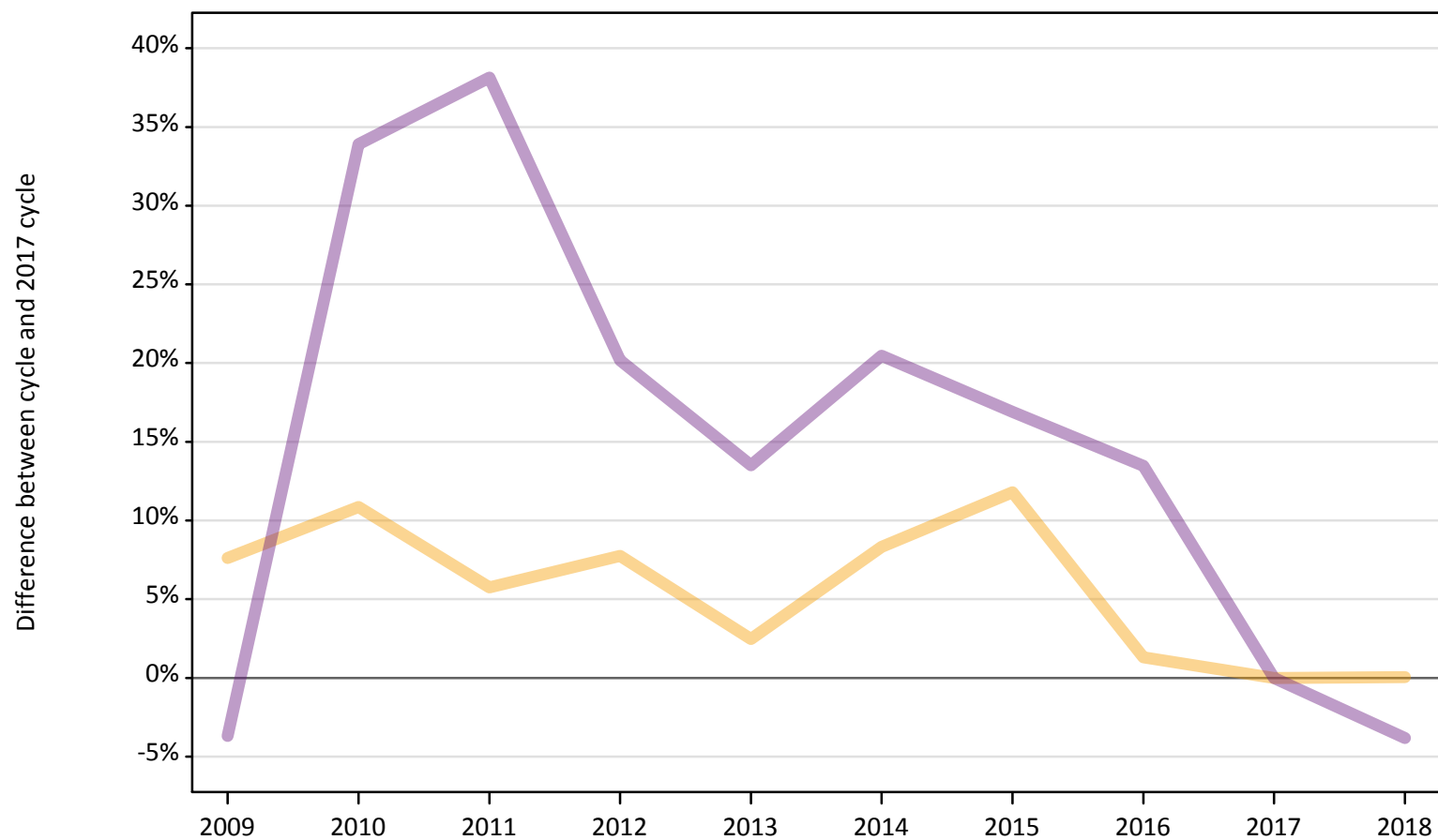
Applicant type	Status	2009	2010	2011	2012	2013	2014	2015	2016	2017	2018
Main scheme	Placed (Adjustment)	-87%	-94%	-85%	-64%	-22%	-19%	-1%	-26%	0%	-11%

Note: The percentage change is not recorded in the above table for groups with fewer than 10 placed applicants in that cycle or in the 2017 cycle.

A.12 Main scheme applicants not currently placed from all domiciles: 1 day after A level results day

Applicants in unplaced states: difference between cycle and 2017 cycle

- Holding offer
- Free to be placed in Clearing



Note: The percentage change is not plotted in the above chart for groups with fewer than 30 unplaced applicants in any one cycle.

A.13 Main scheme applicants not currently placed from all domiciles: 1 day after A level results day

Applicants in unplaced states: applicants at 1 day after A level results day

Applicant type	Status	2009	2010	2011	2012	2013	2014	2015	2016	2017	2018
Main scheme	Holding offer	79,520	81,910	78,140	79,620	75,710	80,030	82,600	74,850	73,890	73,920
	Free to be placed in Clearing	129,860	180,570	186,270	162,040	153,070	162,430	157,640	153,010	134,840	129,700

A.14 Main scheme applicants not currently placed from all domiciles: 1 day after A level results day

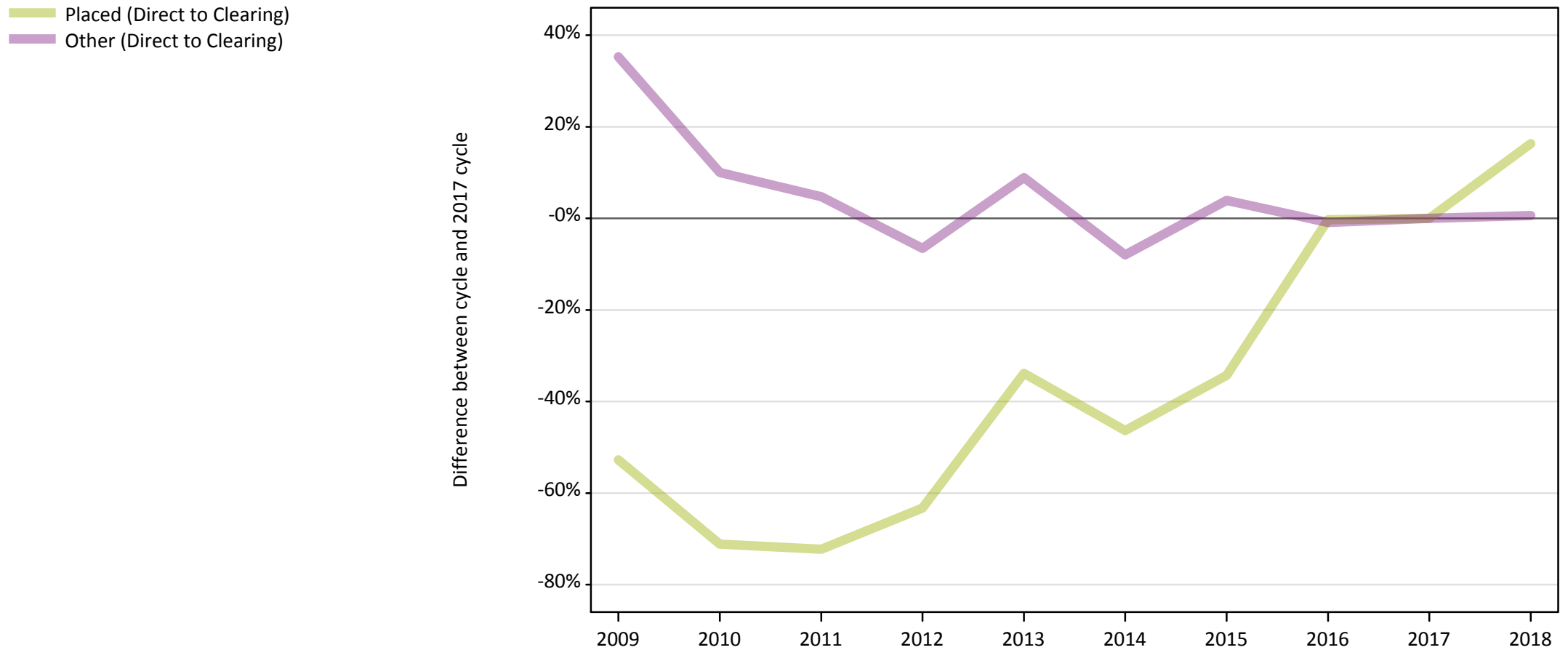
Applicants in unplaced states: difference between cycle and 2017 cycle

Applicant type	Status	2009	2010	2011	2012	2013	2014	2015	2016	2017	2018
Main scheme	Holding offer	8%	11%	6%	8%	2%	8%	12%	1%	0%	0%
	Free to be placed in Clearing	-4%	34%	38%	20%	14%	20%	17%	13%	0%	-4%

Note: The percentage change is not recorded in the above table for groups with fewer than 10 unplaced applicants in that cycle or in the 2017 cycle.

A.15 Direct to Clearing applicants from all domiciles: 1 day after A level results day

Direct to Clearing: difference between cycle and 2017 cycle



Note: The percentage change is not plotted in the above chart for groups with fewer than 30 placed applicants in any one cycle.

A.16 Direct to Clearing applicants from all domiciles: 1 day after A level results day

Direct to Clearing 1 day after A level results day

Applicant type	Status	2009	2010	2011	2012	2013	2014	2015	2016	2017	2018
Direct to Clearing	Placed (Direct to Clearing)	1,710	1,040	1,000	1,330	2,400	1,940	2,380	3,610	3,620	4,210
	Other (Direct to Clearing)	11,820	9,610	9,150	8,170	9,520	8,040	9,080	8,660	8,740	8,790

A.17 Direct to Clearing applicants from all domiciles: 1 day after A level results day

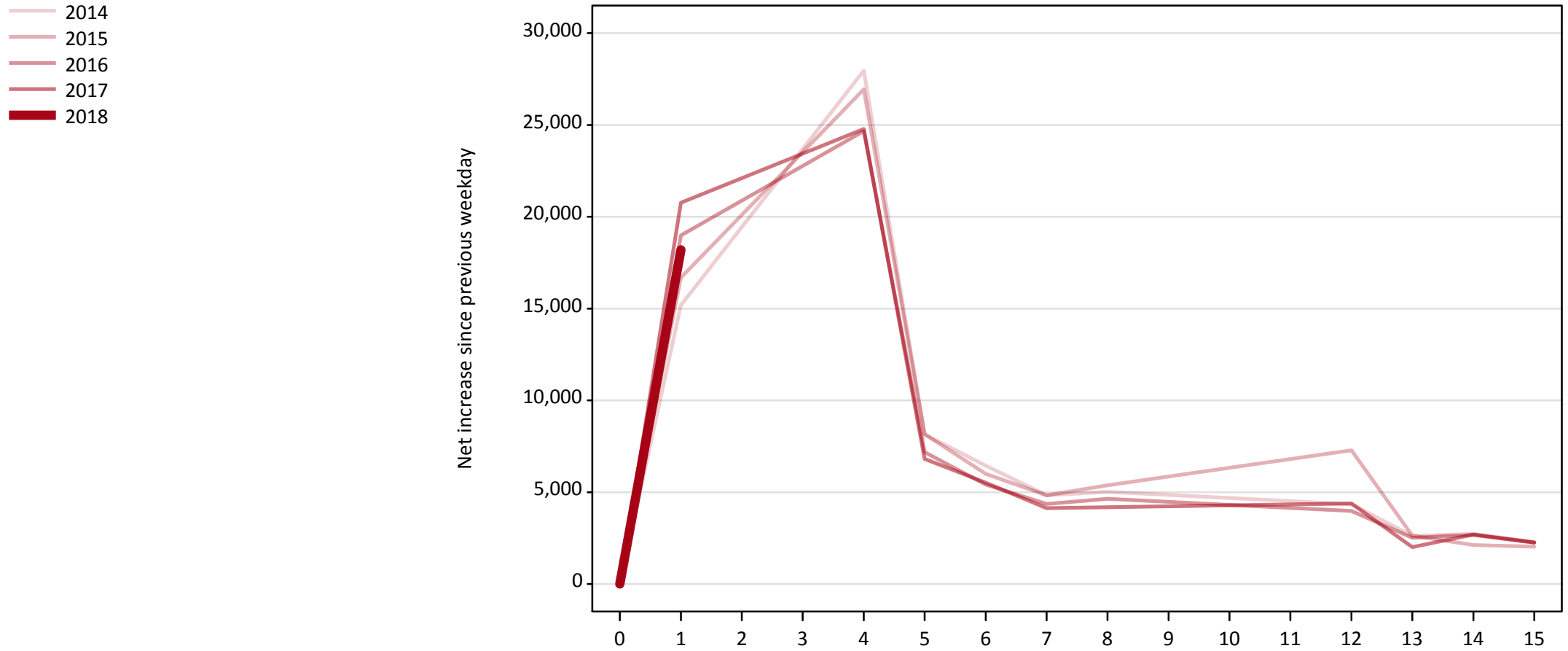
Direct to Clearing: difference between cycle and 2017 cycle

Applicant type	Status	2009	2010	2011	2012	2013	2014	2015	2016	2017	2018
Direct to Clearing	Placed (Direct to Clearing)	-53%	-71%	-72%	-63%	-34%	-46%	-34%	-0%	0%	16%
	Other (Direct to Clearing)	35%	10%	5%	-7%	9%	-8%	4%	-1%	0%	1%

Note: The percentage change is not recorded in the above table for groups with fewer than 10 placed applicants in that cycle or in the 2017 cycle.

A.18 All Placed: Daily net change (from all domiciles)

Net increase since previous weekday (2018 cycle up to 1 day after A level results day)

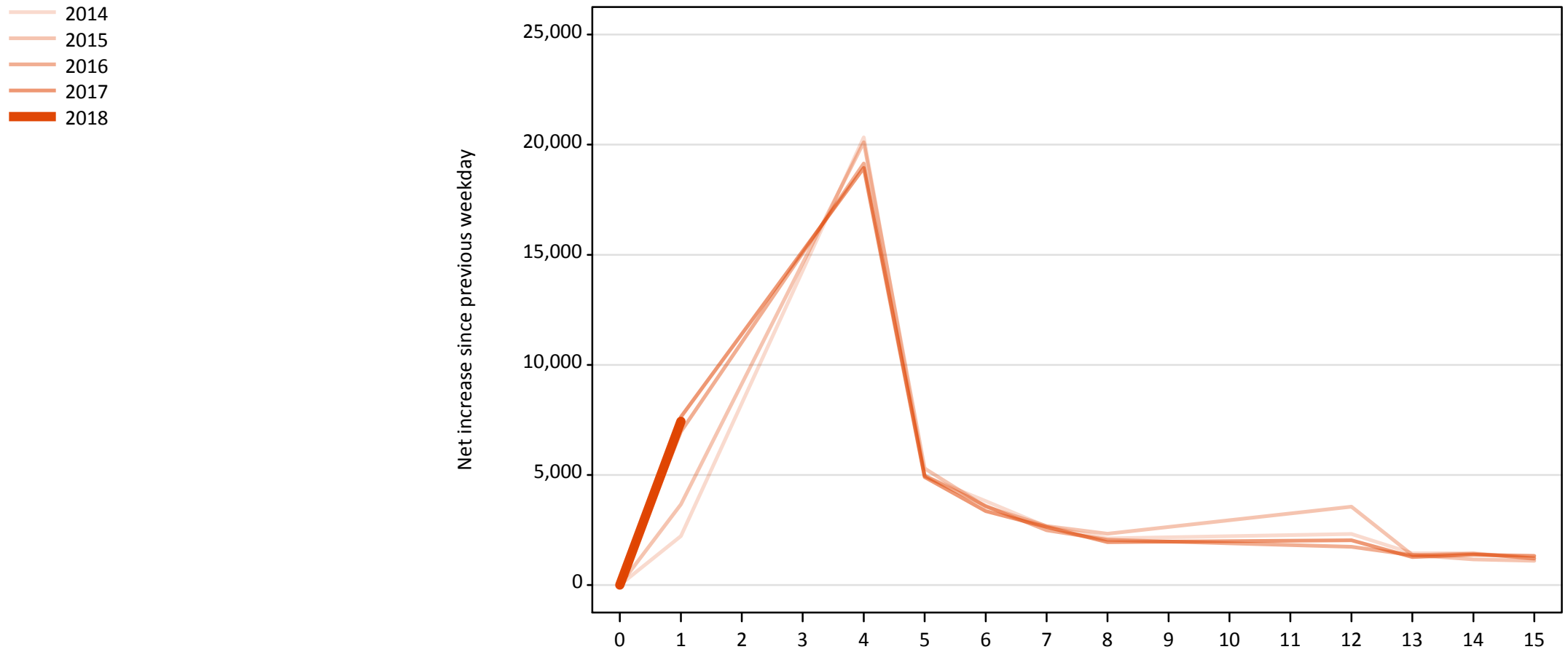


A.19 All Placed: Daily net change (from all domiciles)

Net increase since previous weekday (2018 cycle up to 1 day after A level results day)

Applicant status, days since A level results day		2014	2015	2016	2017	2018
All Placed	0	0	0	0	0	0
	1	15,180	16,680	18,990	20,770	18,200
	4	27,960	26,940	24,670	24,790	
	5	8,140	8,160	7,170	6,810	
	6	6,450	6,000	5,410	5,510	
	7	4,830	4,830	4,350	4,140	
	8	5,020	5,370	4,640	4,190	
	12	4,340	7,280	3,980	4,380	
	13	2,620	2,630	2,510	2,010	
	14	2,730	2,120	2,660	2,700	
	15	2,280	2,030	2,250	2,260	

A.20 Placed through Clearing only: Daily net change (from all domiciles)
Net increase since previous weekday (2018 cycle up to 1 day after A level results day)



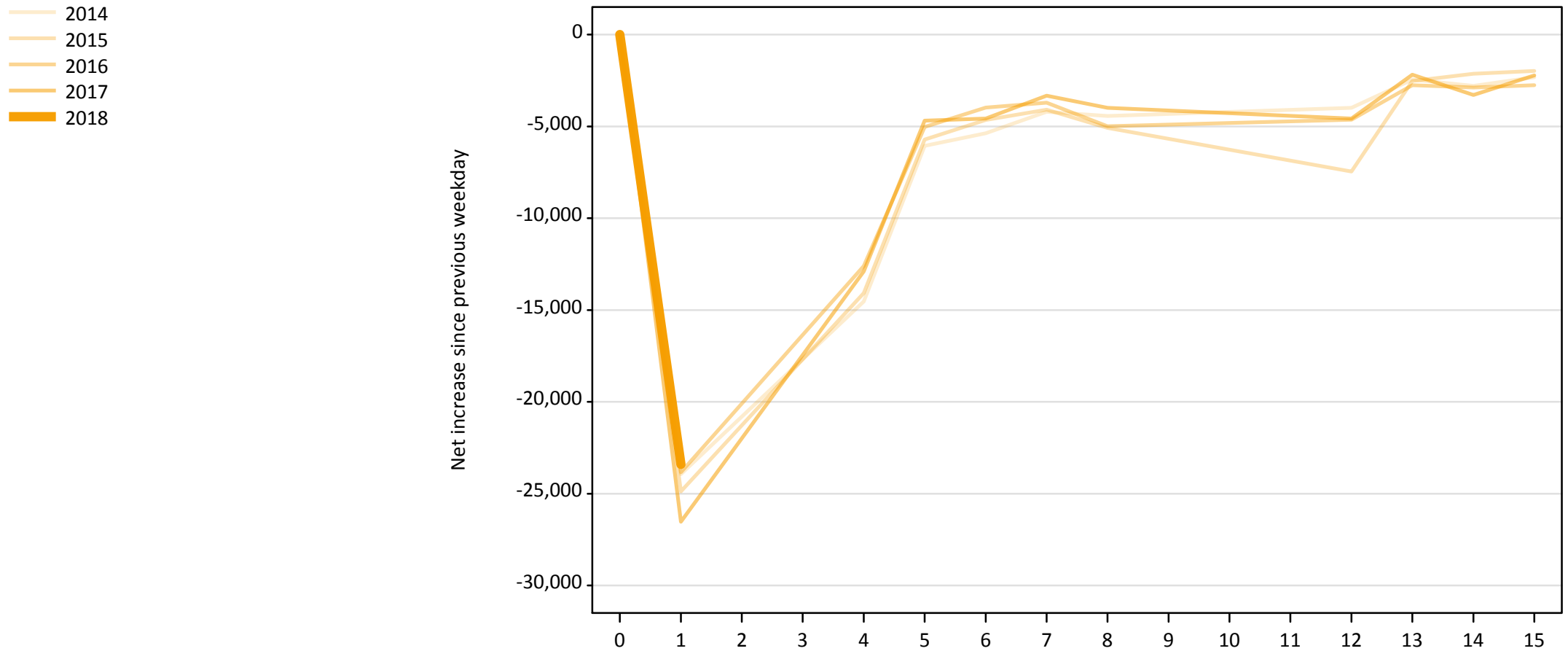
A.21 Placed through Clearing only: Daily net change (from all domiciles)

Net increase since previous weekday (2018 cycle up to 1 day after A level results day)

Applicant status, days since A level results day		2014	2015	2016	2017	2018
Placed through Clearing only	0	0	0	0	0	0
	1	2,220	3,660	6,970	7,640	7,440
	4	20,340	20,110	19,140	18,940	
	5	4,950	5,290	4,960	4,910	
	6	3,810	3,560	3,590	3,360	
	7	2,650	2,680	2,480	2,640	
	8	2,120	2,330	2,050	1,950	
	12	2,310	3,550	1,740	2,030	
	13	1,450	1,370	1,350	1,270	
	14	1,450	1,160	1,420	1,370	
	15	1,190	1,100	1,210	1,320	

A.22 Holding Offer: Daily net change (from all domiciles)

Net increase since previous weekday (2018 cycle up to 1 day after A level results day)

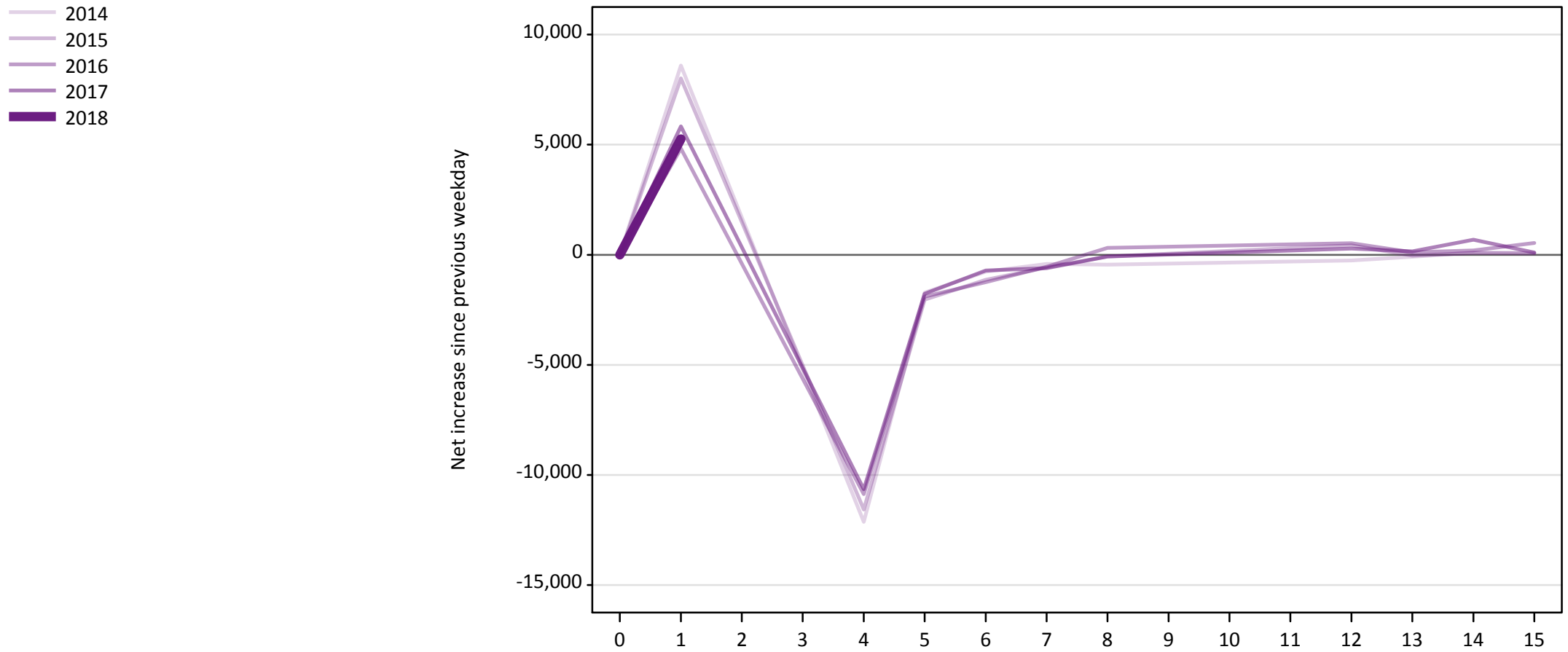


A.23 Holding Offer: Daily net change (from all domiciles)

Net increase since previous weekday (2018 cycle up to 1 day after A level results day)

Applicant status, days since A level results day		2014	2015	2016	2017	2018
Holding Offer	0	0	0	0	0	0
	1	-23,940	-24,880	-23,840	-26,530	-23,410
	4	-14,530	-14,080	-12,600	-12,900	
	5	-6,060	-5,720	-5,030	-4,680	
	6	-5,380	-4,650	-3,970	-4,580	
	7	-4,210	-4,090	-3,700	-3,330	
	8	-4,430	-5,080	-4,990	-3,990	
	12	-3,980	-7,460	-4,640	-4,580	
	13	-2,450	-2,520	-2,760	-2,180	
	14	-2,790	-2,130	-2,880	-3,280	
	15	-2,330	-1,980	-2,760	-2,230	

A.24 Free to be placed in Clearing: Daily net change (from all domiciles)
Net increase since previous weekday (2018 cycle up to 1 day after A level results day)



A.25 Free to be placed in Clearing: Daily net change (from all domiciles)

Net increase since previous weekday (2018 cycle up to 1 day after A level results day)

Applicant status, days since A level results day		2014	2015	2016	2017	2018
Free to be placed in Clearing	0	0	0	0	0	0
	1	8,600	8,010	4,820	5,830	5,260
	4	-12,130	-11,570	-10,870	-10,650	
	5	-1,720	-2,040	-1,900	-1,780	
	6	-770	-1,130	-1,250	-710	
	7	-420	-570	-540	-610	
	8	-450	-80	310	-80	
	12	-260	430	530	280	
	13	-90	-40	120	150	
	14	100	80	200	680	
	15	90	60	530	100	