

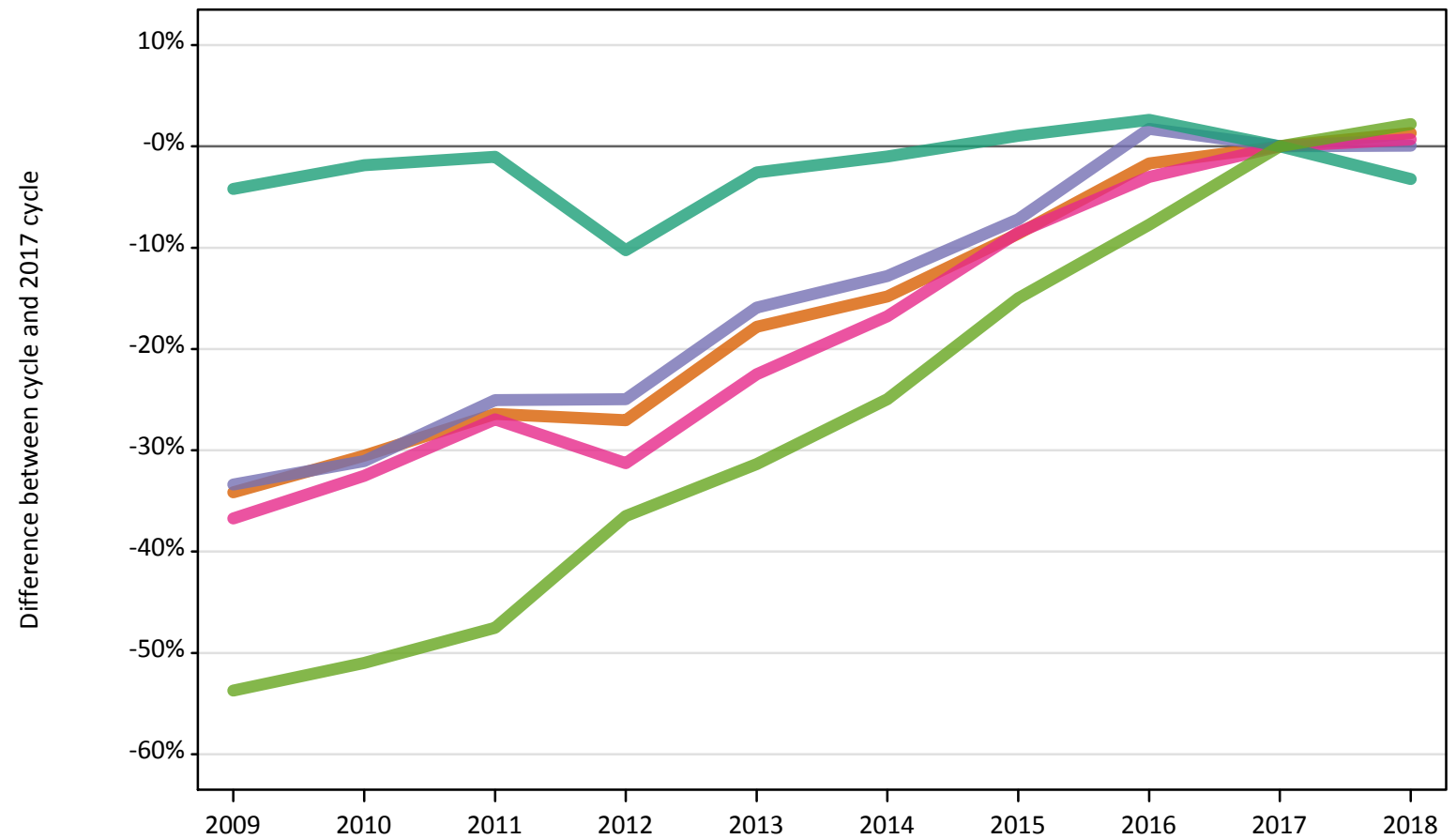
Daily Clearing Analysis: Ethnicity

Analysis at 00:05 on Friday 17 August 2018 (1 day after A level results day)

E.1 Placed applicants from UK by ethnic group: 1 day after A level results day

Placed applicants: change relative to 2017 cycle totals

- Asian
- Black
- Mixed
- White
- Other



Note: The percentage change is not plotted in the above chart for groups with fewer than 30 placed applicants in any one cycle.

E.2 Placed applicants from UK by ethnic group: 1 day after A level results day

| Applicant Status | Ethnic group | 2009 | 2010 | 2011 | 2012 | 2013 | 2014 | 2015 | 2016 | 2017 | 2018 |
|------------------|--------------|---------|---------|---------|---------|---------|---------|---------|---------|---------|---------|
| Placed | Asian | 26,900 | 28,390 | 30,070 | 29,820 | 33,580 | 34,800 | 37,340 | 40,170 | 40,860 | 41,390 |
| | Black | 16,330 | 16,900 | 18,370 | 18,400 | 20,620 | 21,380 | 22,750 | 24,940 | 24,520 | 24,530 |
| | Mixed | 10,470 | 11,170 | 12,090 | 11,370 | 12,820 | 13,770 | 15,140 | 16,050 | 16,540 | 16,660 |
| | White | 275,870 | 282,650 | 285,010 | 258,520 | 280,610 | 285,130 | 291,040 | 295,560 | 287,990 | 278,760 |
| | Other | 2,720 | 2,880 | 3,090 | 3,740 | 4,040 | 4,410 | 5,000 | 5,430 | 5,880 | 6,010 |

E.3 Placed applicants from UK by ethnic group: 1 day after A level results day

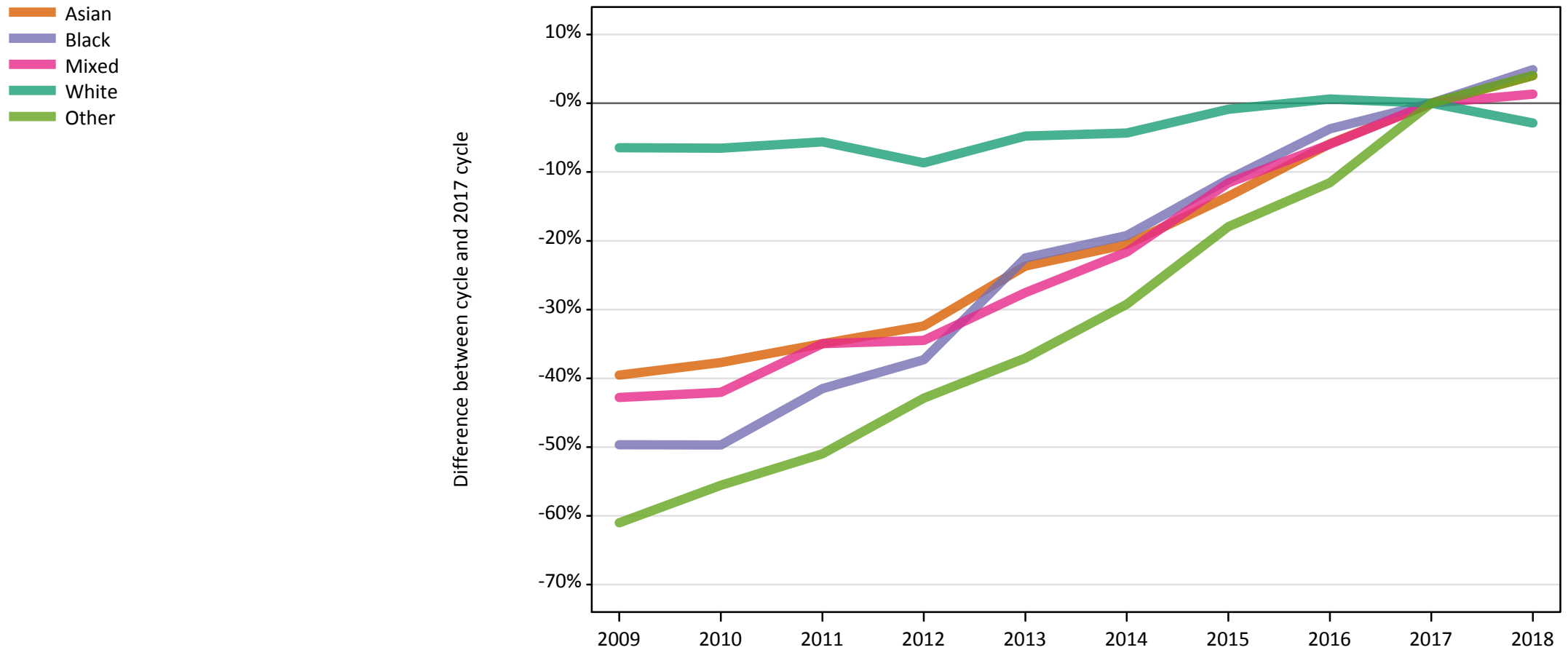
Placed applicants: change relative to 2017 cycle totals

| Applicant Status | Ethnic group | 2009 | 2010 | 2011 | 2012 | 2013 | 2014 | 2015 | 2016 | 2017 | 2018 |
|------------------|--------------|------|------|------|------|------|------|------|------|------|------|
| Placed | Asian | -34% | -31% | -26% | -27% | -18% | -15% | -9% | -2% | 0% | 1% |
| | Black | -33% | -31% | -25% | -25% | -16% | -13% | -7% | 2% | 0% | 0% |
| | Mixed | -37% | -33% | -27% | -31% | -22% | -17% | -8% | -3% | 0% | 1% |
| | White | -4% | -2% | -1% | -10% | -3% | -1% | 1% | 3% | 0% | -3% |
| | Other | -54% | -51% | -48% | -36% | -31% | -25% | -15% | -8% | 0% | 2% |

Note: The percentage change is not recorded in the above table for groups with fewer than 10 placed applicants in that cycle or in the 2017 cycle.

E.4 Placed 18 year old applicants from UK by ethnic group: 1 day after A level results day

Placed 18 year old applicants: change relative to 2017 cycle totals



Note: The percentage change is not plotted in the above chart for groups with fewer than 30 placed applicants in any one cycle.

E.5 Placed 18 year old applicants from UK by ethnic group: 1 day after A level results day

| Applicant Status | Ethnic group | 2009 | 2010 | 2011 | 2012 | 2013 | 2014 | 2015 | 2016 | 2017 | 2018 |
|------------------|--------------|---------|---------|---------|---------|---------|---------|---------|---------|---------|---------|
| Placed | Asian | 14,380 | 14,820 | 15,470 | 16,090 | 18,160 | 18,910 | 20,570 | 22,390 | 23,790 | 24,750 |
| | Black | 4,940 | 4,940 | 5,740 | 6,160 | 7,610 | 7,930 | 8,730 | 9,460 | 9,820 | 10,300 |
| | Mixed | 5,290 | 5,360 | 6,010 | 6,060 | 6,700 | 7,240 | 8,180 | 8,700 | 9,250 | 9,370 |
| | White | 156,930 | 156,840 | 158,390 | 153,270 | 159,770 | 160,510 | 166,360 | 168,860 | 167,800 | 162,970 |
| | Other | 1,130 | 1,290 | 1,420 | 1,660 | 1,830 | 2,050 | 2,380 | 2,570 | 2,900 | 3,020 |

E.6 Placed 18 year old applicants from UK by ethnic group: 1 day after A level results day

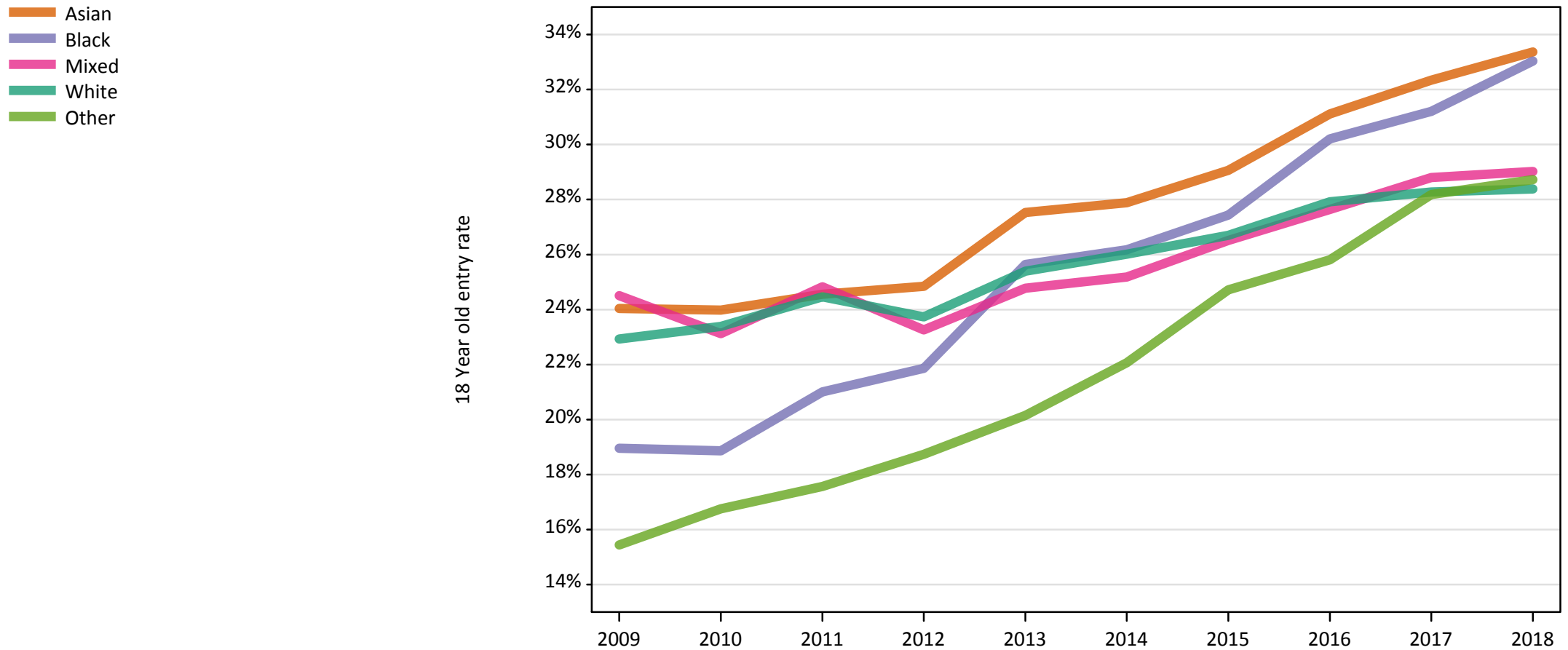
Placed 18 year old applicants: change relative to 2017 cycle totals

| Applicant Status | Ethnic group | 2009 | 2010 | 2011 | 2012 | 2013 | 2014 | 2015 | 2016 | 2017 | 2018 |
|------------------|--------------|------|------|------|------|------|------|------|------|------|------|
| Placed | Asian | -40% | -38% | -35% | -32% | -24% | -21% | -14% | -6% | 0% | 4% |
| | Black | -50% | -50% | -42% | -37% | -22% | -19% | -11% | -4% | 0% | 5% |
| | Mixed | -43% | -42% | -35% | -34% | -28% | -22% | -12% | -6% | 0% | 1% |
| | White | -6% | -7% | -6% | -9% | -5% | -4% | -1% | 1% | 0% | -3% |
| | Other | -61% | -56% | -51% | -43% | -37% | -29% | -18% | -12% | 0% | 4% |

Note: The percentage change is not recorded in the above table for groups with fewer than 10 placed applicants in that cycle or in the 2017 cycle.

E.7 Placed 18 year old applicants from UK by ethnic group: 1 day after A level results day

Placed 18 year old applicants: entry rate



E.8 Placed 18 year old applicants from UK by ethnic group: 1 day after A level results day

Placed 18 year old applicants: entry rate

| Applicant Status | Ethnic group | 2009 | 2010 | 2011 | 2012 | 2013 | 2014 | 2015 | 2016 | 2017 | 2018 |
|------------------|--------------|-------|-------|-------|-------|-------|-------|-------|-------|-------|-------|
| Placed | Asian | 24.0% | 24.0% | 24.6% | 24.8% | 27.5% | 27.9% | 29.1% | 31.1% | 32.3% | 33.4% |
| | Black | 19.0% | 18.9% | 21.0% | 21.9% | 25.6% | 26.2% | 27.4% | 30.2% | 31.2% | 33.0% |
| | Mixed | 24.5% | 23.1% | 24.8% | 23.3% | 24.8% | 25.2% | 26.5% | 27.6% | 28.8% | 29.0% |
| | White | 22.9% | 23.4% | 24.5% | 23.7% | 25.4% | 26.0% | 26.7% | 27.9% | 28.3% | 28.4% |
| | Other | 15.4% | 16.8% | 17.6% | 18.7% | 20.1% | 22.1% | 24.7% | 25.8% | 28.2% | 28.7% |

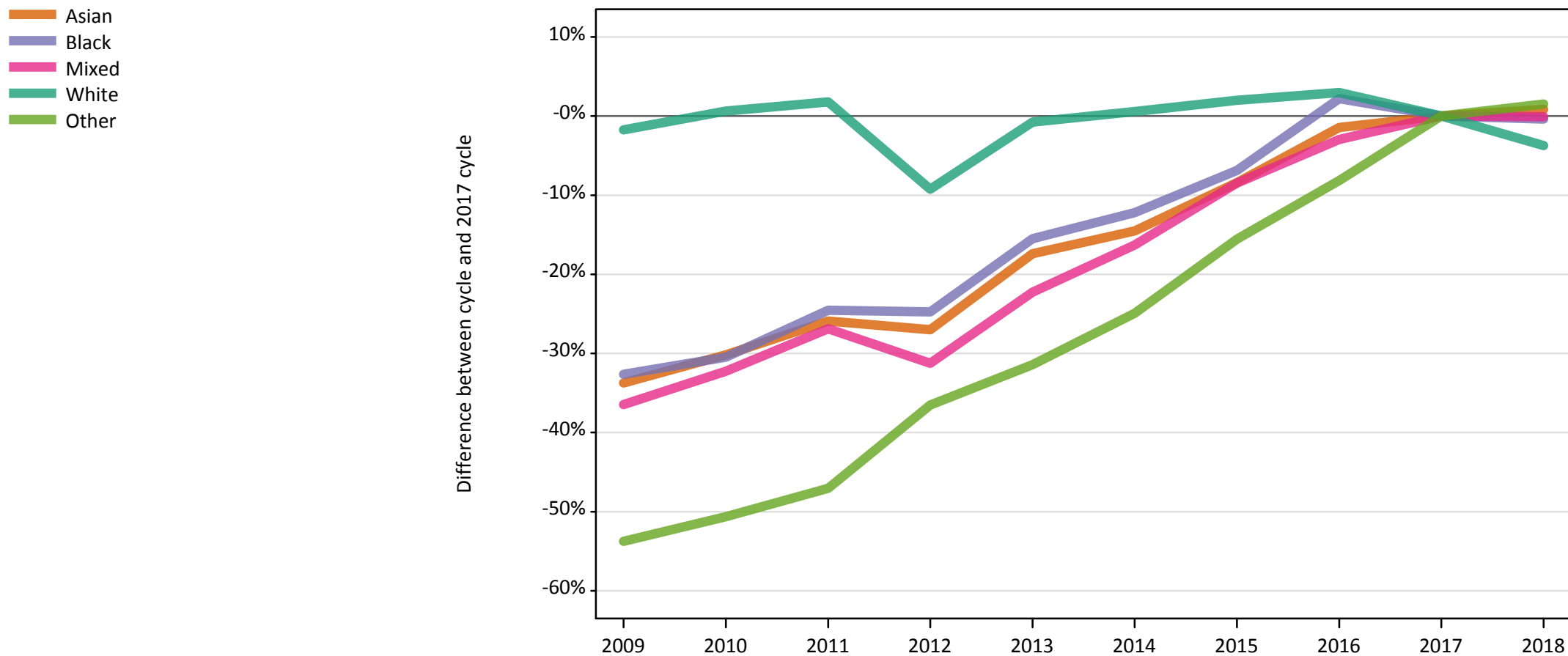
E.9 Placed 18 year old applicants from UK by ethnic group: 1 day after A level results day

Placed 18 year old applicants: entry rate (indexed to 100 = White ethnic group)

| Applicant Status | Ethnic group | 2009 | 2010 | 2011 | 2012 | 2013 | 2014 | 2015 | 2016 | 2017 | 2018 |
|------------------|--------------|------|------|------|------|------|------|------|------|------|------|
| Placed | Asian | 105 | 103 | 100 | 105 | 108 | 107 | 109 | 111 | 114 | 118 |
| | Black | 83 | 81 | 86 | 92 | 101 | 101 | 103 | 108 | 110 | 116 |
| | Mixed | 107 | 99 | 101 | 98 | 98 | 97 | 99 | 99 | 102 | 102 |
| | White | 100 | 100 | 100 | 100 | 100 | 100 | 100 | 100 | 100 | 100 |
| | Other | 67 | 72 | 72 | 79 | 79 | 85 | 93 | 92 | 100 | 101 |

E.10 Placed applicants from England by ethnic group: 1 day after A level results day

Placed applicants: change relative to 2017 cycle totals



Note: The percentage change is not plotted in the above chart for groups with fewer than 30 placed applicants in any one cycle.

E.11 Placed applicants from England by ethnic group: 1 day after A level results day

| Applicant Status | Ethnic group | 2009 | 2010 | 2011 | 2012 | 2013 | 2014 | 2015 | 2016 | 2017 | 2018 |
|------------------|--------------|---------|---------|---------|---------|---------|---------|---------|---------|---------|---------|
| Placed | Asian | 25,600 | 26,980 | 28,620 | 28,200 | 31,910 | 33,020 | 35,380 | 38,070 | 38,630 | 38,950 |
| | Black | 16,020 | 16,530 | 17,940 | 17,890 | 20,090 | 20,870 | 22,140 | 24,300 | 23,770 | 23,690 |
| | Mixed | 9,800 | 10,450 | 11,280 | 10,610 | 11,990 | 12,910 | 14,120 | 14,970 | 15,430 | 15,410 |
| | White | 226,910 | 232,400 | 235,060 | 209,550 | 229,130 | 232,250 | 235,530 | 237,770 | 230,890 | 222,280 |
| | Other | 2,580 | 2,760 | 2,960 | 3,550 | 3,830 | 4,190 | 4,720 | 5,130 | 5,590 | 5,670 |

E.12 Placed applicants from England by ethnic group: 1 day after A level results day

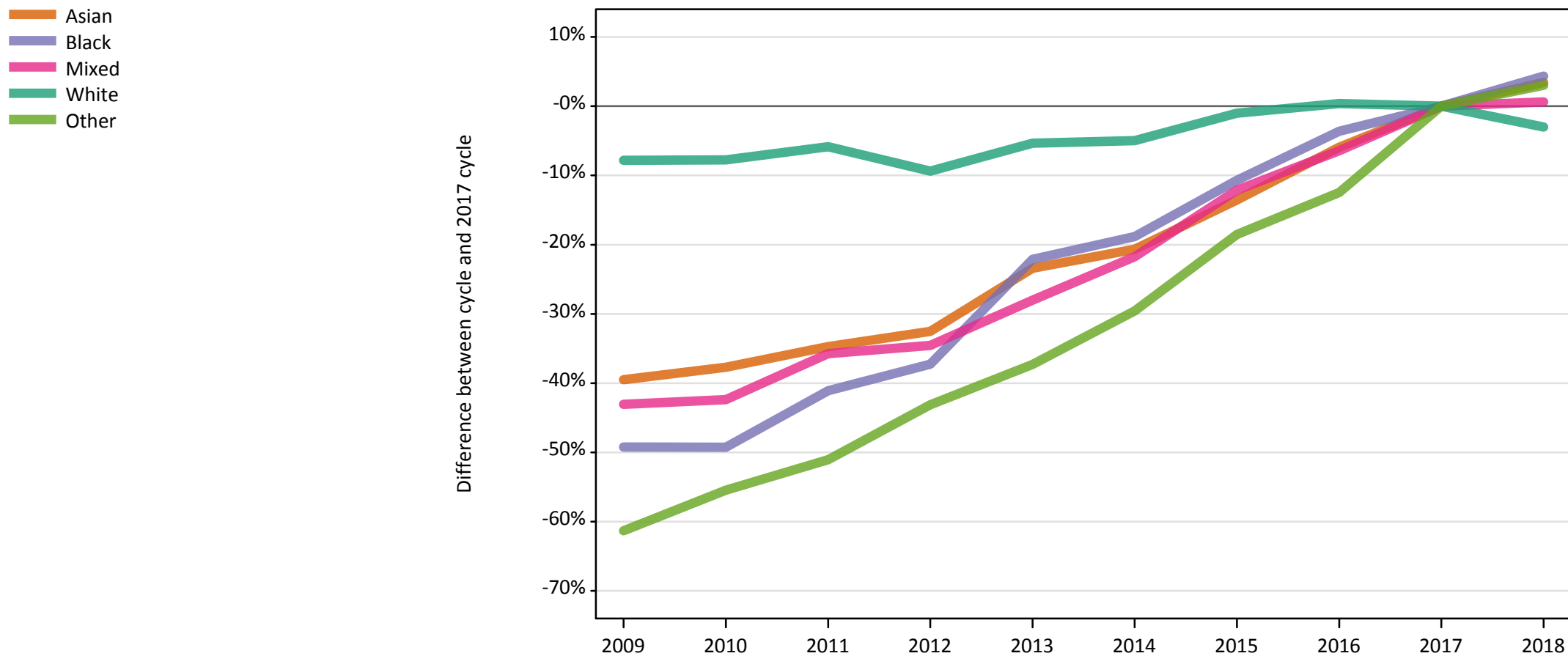
Placed applicants: change relative to 2017 cycle totals

| Applicant Status | Ethnic group | 2009 | 2010 | 2011 | 2012 | 2013 | 2014 | 2015 | 2016 | 2017 | 2018 |
|------------------|--------------|------|------|------|------|------|------|------|------|------|------|
| Placed | Asian | -34% | -30% | -26% | -27% | -17% | -15% | -8% | -1% | 0% | 1% |
| | Black | -33% | -30% | -25% | -25% | -16% | -12% | -7% | 2% | 0% | -0% |
| | Mixed | -36% | -32% | -27% | -31% | -22% | -16% | -8% | -3% | 0% | -0% |
| | White | -2% | 1% | 2% | -9% | -1% | 1% | 2% | 3% | 0% | -4% |
| | Other | -54% | -51% | -47% | -37% | -31% | -25% | -16% | -8% | 0% | 2% |

Note: The percentage change is not recorded in the above table for groups with fewer than 10 placed applicants in that cycle or in the 2017 cycle.

E.13 Placed 18 year old applicants from England by ethnic group: 1 day after A level results day

Placed 18 year old applicants: change relative to 2017 cycle totals



Note: The percentage change is not plotted in the above chart for groups with fewer than 30 placed applicants in any one cycle.

E.14 Placed 18 year old applicants from England by ethnic group: 1 day after A level results day

| Applicant Status | Ethnic group | 2009 | 2010 | 2011 | 2012 | 2013 | 2014 | 2015 | 2016 | 2017 | 2018 |
|------------------|--------------|---------|---------|---------|---------|---------|---------|---------|---------|---------|---------|
| Placed | Asian | 13,720 | 14,130 | 14,810 | 15,310 | 17,380 | 18,000 | 19,620 | 21,340 | 22,690 | 23,470 |
| | Black | 4,880 | 4,880 | 5,660 | 6,030 | 7,480 | 7,800 | 8,580 | 9,260 | 9,610 | 10,030 |
| | Mixed | 4,950 | 5,010 | 5,590 | 5,690 | 6,260 | 6,810 | 7,640 | 8,140 | 8,700 | 8,750 |
| | White | 127,970 | 128,070 | 130,690 | 125,840 | 131,410 | 131,930 | 137,420 | 139,380 | 138,830 | 134,640 |
| | Other | 1,080 | 1,240 | 1,360 | 1,580 | 1,750 | 1,960 | 2,270 | 2,440 | 2,790 | 2,870 |

E.15 Placed 18 year old applicants from England by ethnic group: 1 day after A level results day

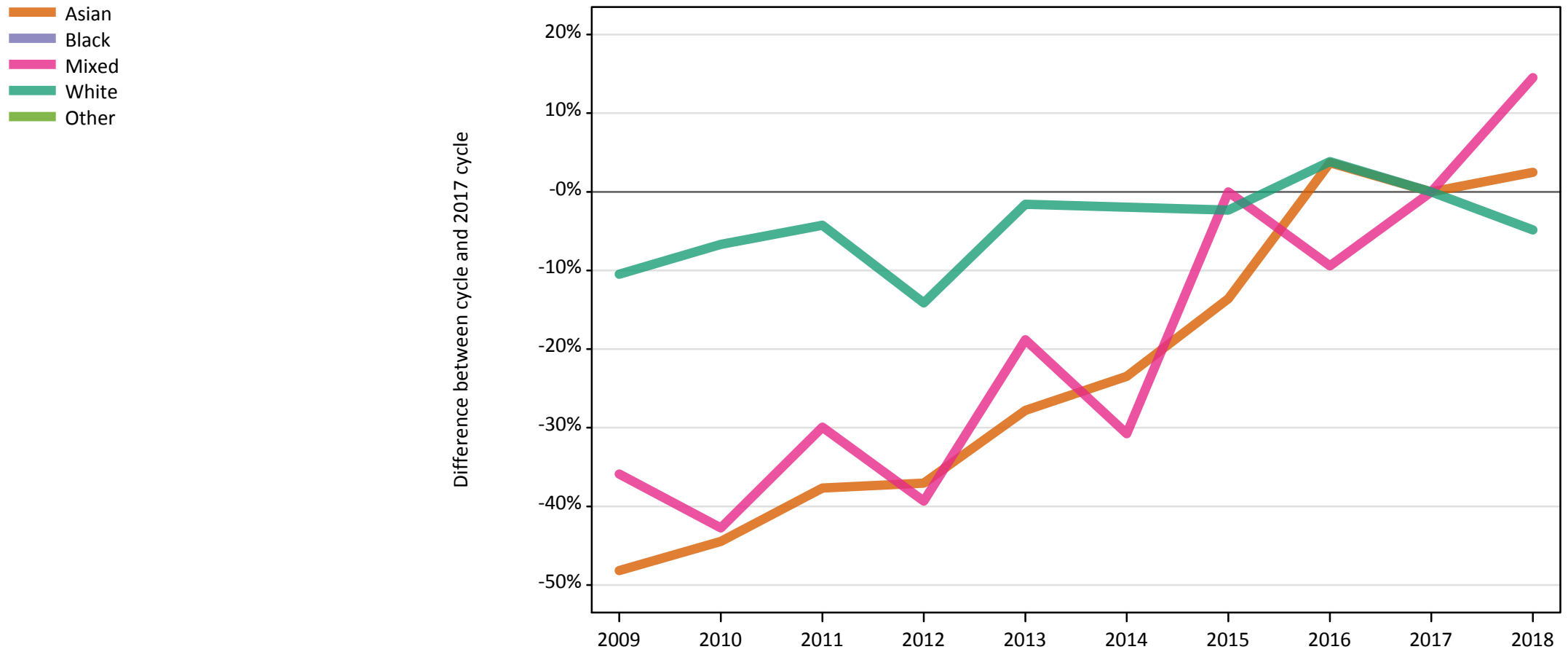
Placed 18 year old applicants: change relative to 2017 cycle totals

| Applicant Status | Ethnic group | 2009 | 2010 | 2011 | 2012 | 2013 | 2014 | 2015 | 2016 | 2017 | 2018 |
|------------------|--------------|------|------|------|------|------|------|------|------|------|------|
| Placed | Asian | -40% | -38% | -35% | -33% | -23% | -21% | -14% | -6% | 0% | 3% |
| | Black | -49% | -49% | -41% | -37% | -22% | -19% | -11% | -4% | 0% | 4% |
| | Mixed | -43% | -42% | -36% | -35% | -28% | -22% | -12% | -6% | 0% | 1% |
| | White | -8% | -8% | -6% | -9% | -5% | -5% | -1% | 0% | 0% | -3% |
| | Other | -61% | -55% | -51% | -43% | -37% | -30% | -19% | -12% | 0% | 3% |

Note: The percentage change is not recorded in the above table for groups with fewer than 10 placed applicants in that cycle or in the 2017 cycle.

E.16 Placed applicants from Northern Ireland by ethnic group: 1 day after A level results day

Placed applicants: change relative to 2017 cycle totals



Note: The percentage change is not plotted in the above chart for groups with fewer than 30 placed applicants in any one cycle.

E.17 Placed applicants from Northern Ireland by ethnic group: 1 day after A level results day

| Applicant Status | Ethnic group | 2009 | 2010 | 2011 | 2012 | 2013 | 2014 | 2015 | 2016 | 2017 | 2018 |
|------------------|--------------|--------|--------|--------|--------|--------|--------|--------|--------|--------|--------|
| Placed | Asian | 80 | 90 | 100 | 100 | 120 | 120 | 140 | 170 | 160 | 170 |
| | Black | 10 | 20 | 10 | 20 | 20 | 30 | 30 | 50 | 40 | 50 |
| | Mixed | 80 | 70 | 80 | 70 | 100 | 80 | 120 | 110 | 120 | 130 |
| | White | 10,500 | 10,940 | 11,230 | 10,070 | 11,540 | 11,500 | 11,450 | 12,180 | 11,730 | 11,160 |
| | Other | 10 | 10 | 10 | 10 | 10 | 20 | 10 | 10 | 20 | 20 |

E.18 Placed applicants from Northern Ireland by ethnic group: 1 day after A level results day

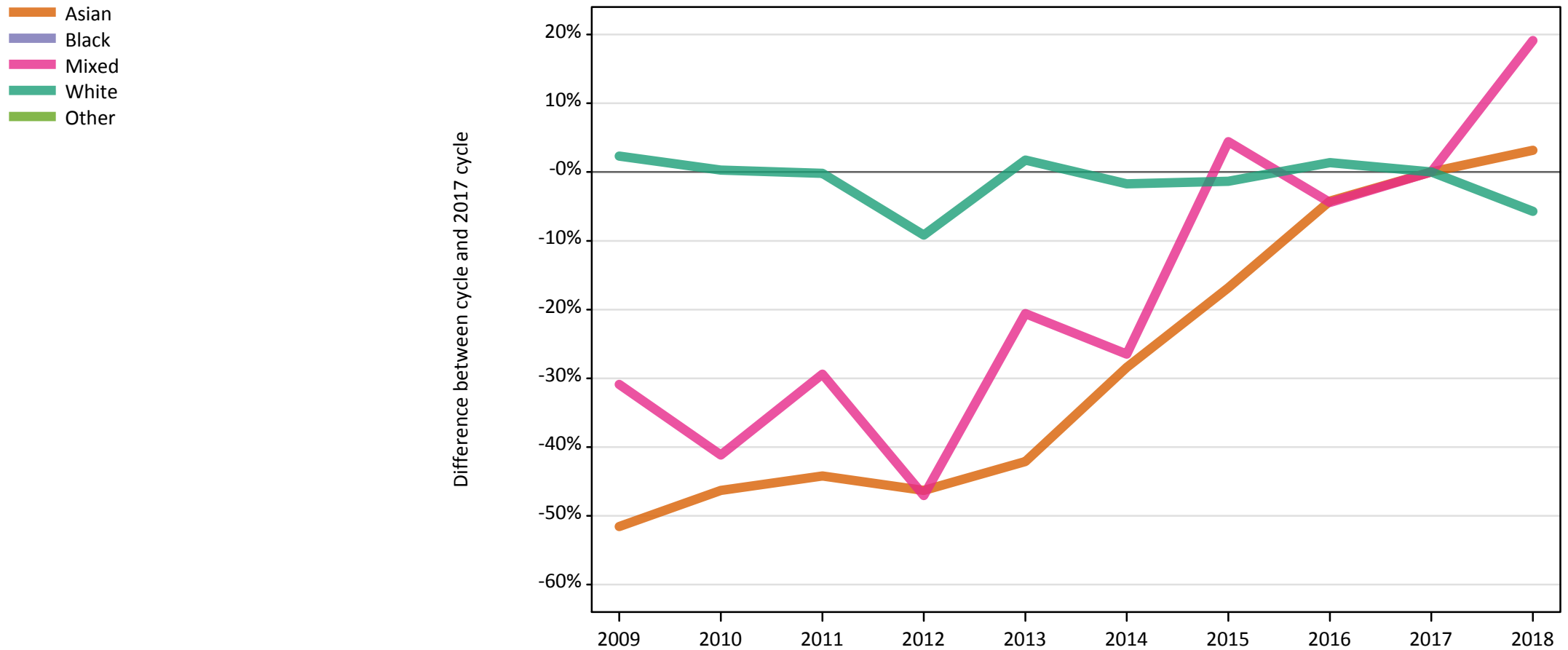
Placed applicants: change relative to 2017 cycle totals

| Applicant Status | Ethnic group | 2009 | 2010 | 2011 | 2012 | 2013 | 2014 | 2015 | 2016 | 2017 | 2018 |
|------------------|--------------|------|------|------|------|------|------|------|------|------|------|
| Placed | Asian | -48% | -44% | -38% | -37% | -28% | -23% | -14% | 4% | 0% | 2% |
| | Black | -71% | -63% | -73% | -49% | -41% | -17% | -27% | 12% | 0% | 10% |
| | Mixed | -36% | -43% | -30% | -39% | -19% | -31% | 0% | -9% | 0% | 15% |
| | White | -10% | -7% | -4% | -14% | -2% | -2% | -2% | 4% | 0% | -5% |
| | Other | -65% | -39% | -70% | -48% | -61% | -35% | -48% | -39% | 0% | -22% |

Note: The percentage change is not recorded in the above table for groups with fewer than 10 placed applicants in that cycle or in the 2017 cycle.

E.19 Placed 18 year old applicants from Northern Ireland by ethnic group: 1 day after A level results day

Placed 18 year old applicants: change relative to 2017 cycle totals



Note: The percentage change is not plotted in the above chart for groups with fewer than 30 placed applicants in any one cycle.

E.20 Placed 18 year old applicants from Northern Ireland by ethnic group: 1 day after A level results day

| Applicant Status | Ethnic group | 2009 | 2010 | 2011 | 2012 | 2013 | 2014 | 2015 | 2016 | 2017 | 2018 |
|------------------|--------------|-------|-------|-------|-------|-------|-------|-------|-------|-------|-------|
| Placed | Asian | 50 | 50 | 50 | 50 | 60 | 70 | 80 | 90 | 100 | 100 |
| | Black | 10 | 0 | 10 | 10 | 10 | 10 | 10 | 10 | 10 | 10 |
| | Mixed | 50 | 40 | 50 | 40 | 50 | 50 | 70 | 70 | 70 | 80 |
| | White | 7,220 | 7,080 | 7,040 | 6,410 | 7,180 | 6,940 | 6,960 | 7,150 | 7,060 | 6,650 |
| | Other | 0 | 10 | 0 | 0 | 0 | 10 | 0 | 10 | 10 | 10 |

E.21 Placed 18 year old applicants from Northern Ireland by ethnic group: 1 day after A level results day

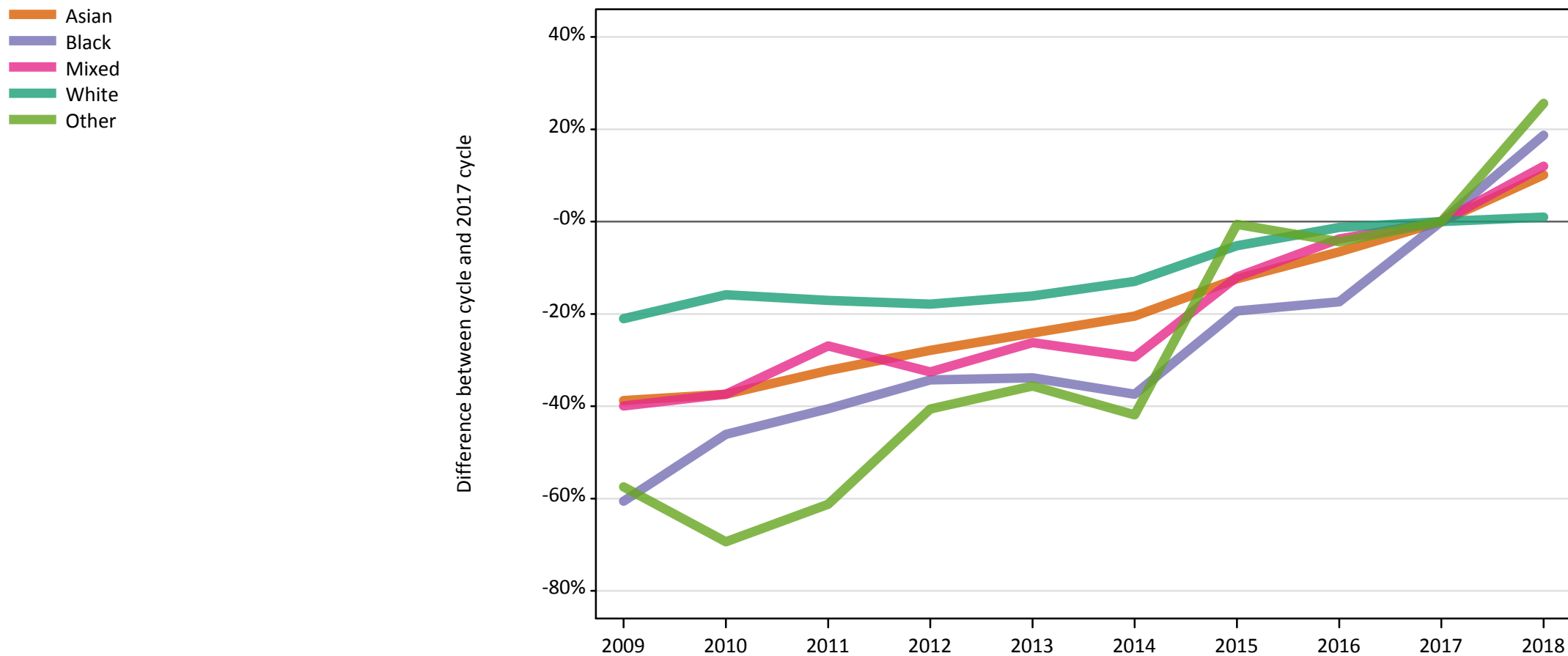
Placed 18 year old applicants: change relative to 2017 cycle totals

| Applicant Status | Ethnic group | 2009 | 2010 | 2011 | 2012 | 2013 | 2014 | 2015 | 2016 | 2017 | 2018 |
|------------------|--------------|------|------|------|------|------|------|------|------|------|------|
| Placed | Asian | -52% | -46% | -44% | -46% | -42% | -28% | -17% | -4% | 0% | 3% |
| | Black | -58% | | -58% | -33% | 0% | -17% | -8% | 17% | 0% | 0% |
| | Mixed | -31% | -41% | -29% | -47% | -21% | -26% | 4% | -4% | 0% | 19% |
| | White | 2% | 0% | -0% | -9% | 2% | -2% | -1% | 1% | 0% | -6% |
| | Other | | -40% | | | | -20% | | -20% | 0% | -10% |

Note: The percentage change is not recorded in the above table for groups with fewer than 10 placed applicants in that cycle or in the 2017 cycle.

E.22 Placed applicants from Scotland by ethnic group: 1 day after A level results day

Placed applicants: change relative to 2017 cycle totals



Note: The percentage change is not plotted in the above chart for groups with fewer than 30 placed applicants in any one cycle.

E.23 Placed applicants from Scotland by ethnic group: 1 day after A level results day

| Applicant Status | Ethnic group | 2009 | 2010 | 2011 | 2012 | 2013 | 2014 | 2015 | 2016 | 2017 | 2018 |
|------------------|--------------|--------|--------|--------|--------|--------|--------|--------|--------|--------|--------|
| Placed | Asian | 860 | 880 | 950 | 1,010 | 1,060 | 1,110 | 1,230 | 1,310 | 1,400 | 1,540 |
| | Black | 180 | 240 | 270 | 300 | 300 | 280 | 360 | 370 | 450 | 530 |
| | Mixed | 350 | 370 | 430 | 390 | 430 | 410 | 510 | 560 | 580 | 650 |
| | White | 23,650 | 25,200 | 24,840 | 24,600 | 25,130 | 26,070 | 28,380 | 29,580 | 29,950 | 30,240 |
| | Other | 70 | 50 | 60 | 100 | 100 | 90 | 160 | 150 | 160 | 200 |

E.24 Placed applicants from Scotland by ethnic group: 1 day after A level results day

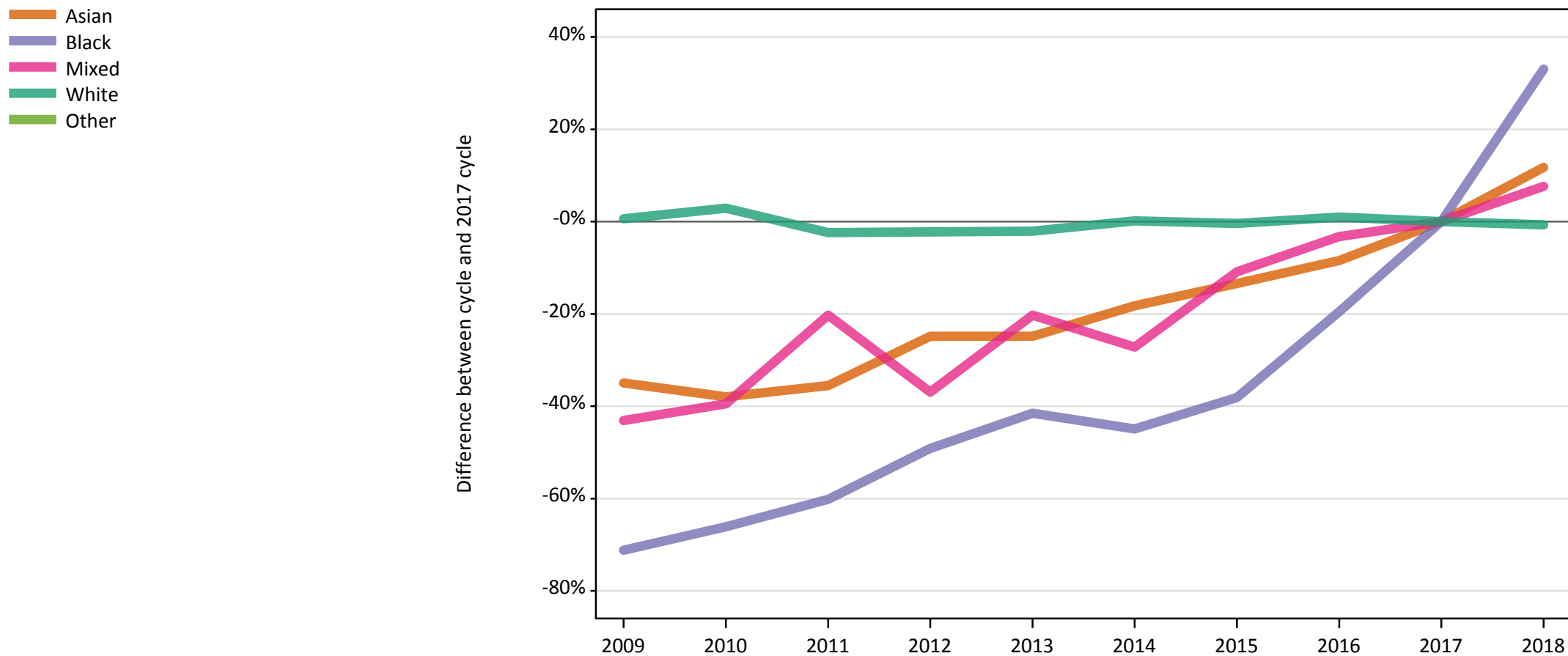
Placed applicants: change relative to 2017 cycle totals

| Applicant Status | Ethnic group | 2009 | 2010 | 2011 | 2012 | 2013 | 2014 | 2015 | 2016 | 2017 | 2018 |
|------------------|--------------|------|------|------|------|------|------|------|------|------|------|
| Placed | Asian | -39% | -37% | -32% | -28% | -24% | -20% | -12% | -7% | 0% | 10% |
| | Black | -61% | -46% | -41% | -34% | -34% | -37% | -19% | -17% | 0% | 19% |
| | Mixed | -40% | -37% | -27% | -33% | -26% | -29% | -12% | -4% | 0% | 12% |
| | White | -21% | -16% | -17% | -18% | -16% | -13% | -5% | -1% | 0% | 1% |
| | Other | -58% | -69% | -61% | -41% | -36% | -42% | -1% | -4% | 0% | 26% |

Note: The percentage change is not recorded in the above table for groups with fewer than 10 placed applicants in that cycle or in the 2017 cycle.

E.25 Placed 18 year old applicants from Scotland by ethnic group: 1 day after A level results day

Placed 18 year old applicants: change relative to 2017 cycle totals



Note: The percentage change is not plotted in the above chart for groups with fewer than 30 placed applicants in any one cycle.

E.26 Placed 18 year old applicants from Scotland by ethnic group: 1 day after A level results day

| Applicant Status | Ethnic group | 2009 | 2010 | 2011 | 2012 | 2013 | 2014 | 2015 | 2016 | 2017 | 2018 |
|------------------|--------------|--------|--------|--------|--------|--------|--------|--------|--------|--------|--------|
| Placed | Asian | 430 | 410 | 430 | 500 | 500 | 540 | 580 | 610 | 660 | 740 |
| | Black | 30 | 40 | 50 | 60 | 70 | 70 | 70 | 100 | 120 | 160 |
| | Mixed | 160 | 170 | 220 | 170 | 220 | 200 | 250 | 270 | 280 | 300 |
| | White | 13,300 | 13,600 | 12,910 | 12,930 | 12,940 | 13,240 | 13,160 | 13,350 | 13,220 | 13,120 |
| | Other | 30 | 20 | 30 | 40 | 40 | 40 | 60 | 60 | 60 | 80 |

E.27 Placed 18 year old applicants from Scotland by ethnic group: 1 day after A level results day

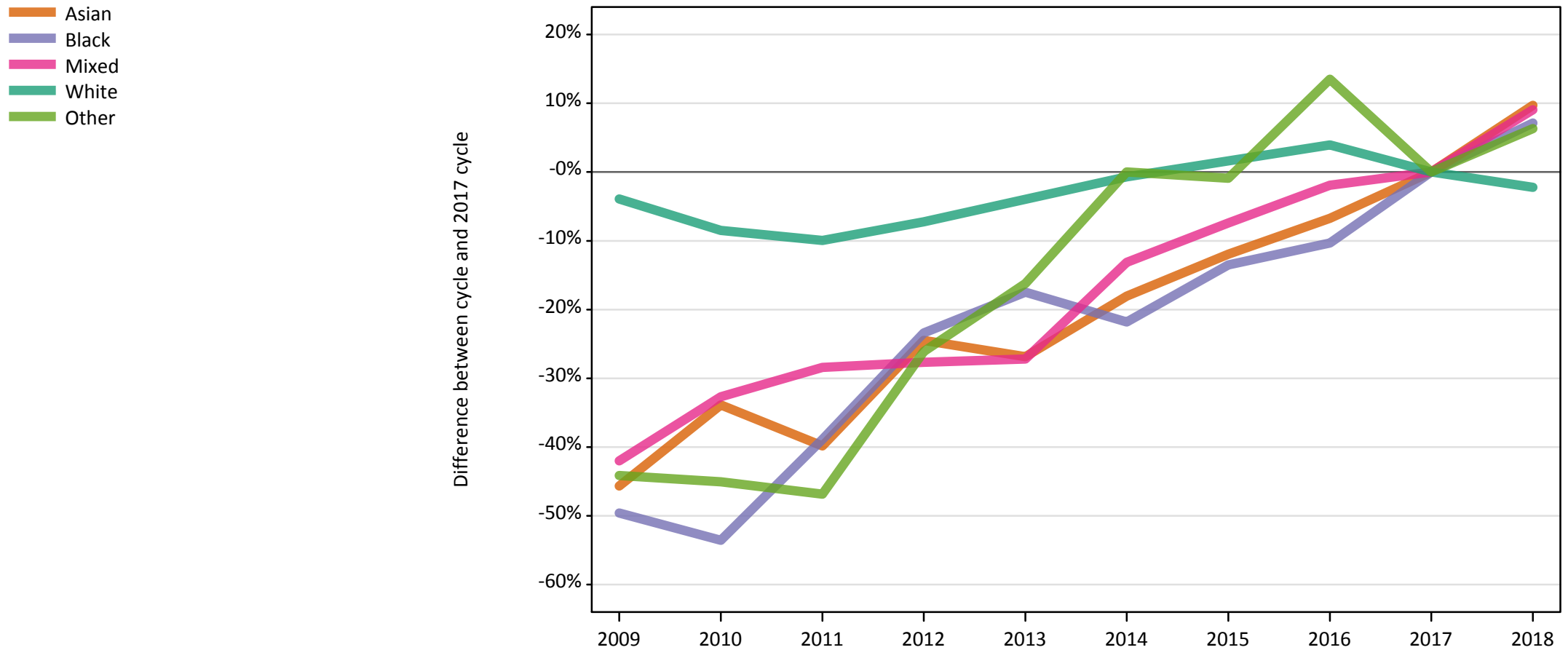
Placed 18 year old applicants: change relative to 2017 cycle totals

| Applicant Status | Ethnic group | 2009 | 2010 | 2011 | 2012 | 2013 | 2014 | 2015 | 2016 | 2017 | 2018 |
|------------------|--------------|------|------|------|------|------|------|------|------|------|------|
| Placed | Asian | -35% | -38% | -36% | -25% | -25% | -18% | -13% | -8% | 0% | 12% |
| | Black | -71% | -66% | -60% | -49% | -42% | -45% | -38% | -19% | 0% | 33% |
| | Mixed | -43% | -39% | -20% | -37% | -20% | -27% | -11% | -3% | 0% | 8% |
| | White | 1% | 3% | -2% | -2% | -2% | 0% | -0% | 1% | 0% | -1% |
| | Other | -57% | -73% | -52% | -42% | -33% | -40% | 2% | -2% | 0% | 25% |

Note: The percentage change is not recorded in the above table for groups with fewer than 10 placed applicants in that cycle or in the 2017 cycle.

E.28 Placed applicants from Wales by ethnic group: 1 day after A level results day

Placed applicants: change relative to 2017 cycle totals



Note: The percentage change is not plotted in the above chart for groups with fewer than 30 placed applicants in any one cycle.

E.29 Placed applicants from Wales by ethnic group: 1 day after A level results day

| Applicant Status | Ethnic group | 2009 | 2010 | 2011 | 2012 | 2013 | 2014 | 2015 | 2016 | 2017 | 2018 |
|------------------|--------------|--------|--------|--------|--------|--------|--------|--------|--------|--------|--------|
| Placed | Asian | 360 | 440 | 400 | 510 | 490 | 550 | 590 | 630 | 670 | 740 |
| | Black | 130 | 120 | 150 | 190 | 210 | 200 | 220 | 230 | 250 | 270 |
| | Mixed | 240 | 280 | 300 | 300 | 310 | 360 | 390 | 410 | 420 | 460 |
| | White | 14,820 | 14,110 | 13,890 | 14,310 | 14,810 | 15,320 | 15,680 | 16,030 | 15,420 | 15,080 |
| | Other | 60 | 60 | 60 | 80 | 90 | 110 | 110 | 130 | 110 | 120 |

E.30 Placed applicants from Wales by ethnic group: 1 day after A level results day

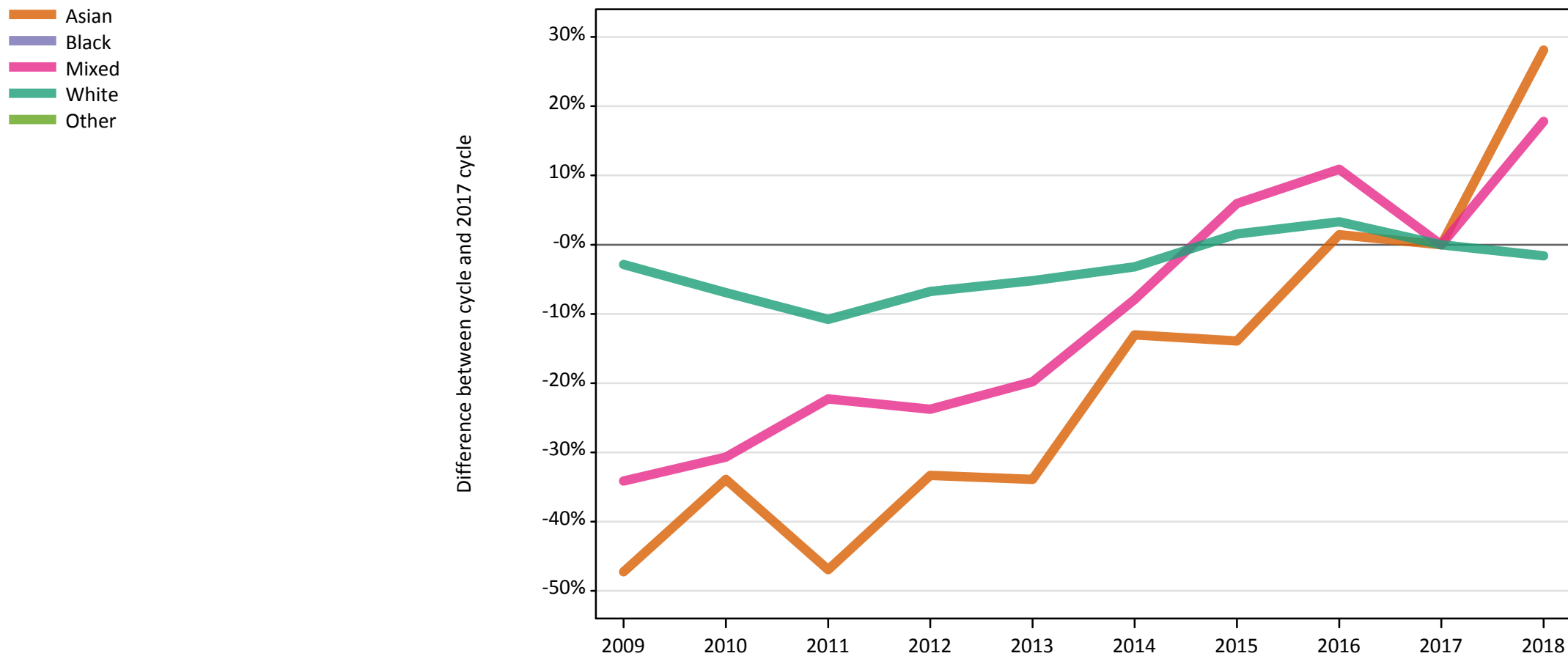
Placed applicants: change relative to 2017 cycle totals

| Applicant Status | Ethnic group | 2009 | 2010 | 2011 | 2012 | 2013 | 2014 | 2015 | 2016 | 2017 | 2018 |
|------------------|--------------|------|------|------|------|------|------|------|------|------|------|
| Placed | Asian | -46% | -34% | -40% | -24% | -27% | -18% | -12% | -7% | 0% | 10% |
| | Black | -50% | -54% | -39% | -23% | -17% | -22% | -13% | -10% | 0% | 7% |
| | Mixed | -42% | -33% | -28% | -28% | -27% | -13% | -7% | -2% | 0% | 9% |
| | White | -4% | -8% | -10% | -7% | -4% | -1% | 2% | 4% | 0% | -2% |
| | Other | -44% | -45% | -47% | -26% | -16% | 0% | -1% | 14% | 0% | 6% |

Note: The percentage change is not recorded in the above table for groups with fewer than 10 placed applicants in that cycle or in the 2017 cycle.

E.31 Placed 18 year old applicants from Wales by ethnic group: 1 day after A level results day

Placed 18 year old applicants: change relative to 2017 cycle totals



Note: The percentage change is not plotted in the above chart for groups with fewer than 30 placed applicants in any one cycle.

E.32 Placed 18 year old applicants from Wales by ethnic group: 1 day after A level results day

| Applicant Status | Ethnic group | 2009 | 2010 | 2011 | 2012 | 2013 | 2014 | 2015 | 2016 | 2017 | 2018 |
|------------------|--------------|-------|-------|-------|-------|-------|-------|-------|-------|-------|-------|
| Placed | Asian | 180 | 230 | 180 | 230 | 230 | 300 | 300 | 350 | 350 | 440 |
| | Black | 30 | 20 | 30 | 60 | 50 | 60 | 70 | 90 | 80 | 110 |
| | Mixed | 130 | 140 | 160 | 150 | 160 | 190 | 210 | 220 | 200 | 240 |
| | White | 8,440 | 8,090 | 7,750 | 8,100 | 8,240 | 8,410 | 8,820 | 8,980 | 8,690 | 8,550 |
| | Other | 30 | 30 | 30 | 40 | 40 | 50 | 50 | 60 | 50 | 70 |

E.33 Placed 18 year old applicants from Wales by ethnic group: 1 day after A level results day

Placed 18 year old applicants: change relative to 2017 cycle totals

| Applicant Status | Ethnic group | 2009 | 2010 | 2011 | 2012 | 2013 | 2014 | 2015 | 2016 | 2017 | 2018 |
|------------------|--------------|------|------|------|------|------|------|------|------|------|------|
| Placed | Asian | -47% | -34% | -47% | -33% | -34% | -13% | -14% | 1% | 0% | 28% |
| | Black | -67% | -75% | -63% | -25% | -42% | -29% | -18% | 4% | 0% | 28% |
| | Mixed | -34% | -31% | -22% | -24% | -20% | -8% | 6% | 11% | 0% | 18% |
| | White | -3% | -7% | -11% | -7% | -5% | -3% | 2% | 3% | 0% | -2% |
| | Other | -46% | -42% | -42% | -27% | -19% | 2% | 0% | 31% | 0% | 40% |

Note: The percentage change is not recorded in the above table for groups with fewer than 10 placed applicants in that cycle or in the 2017 cycle.